



2023 ILLINOIS REPORT CARD

UNDERSTANDING STUDENT GROWTH



Illinois
State Board of
Education

What is the Student Growth Percentile (SGP)?

The Student Growth Percentile (SGP) describes how much a student grew compared to their academic peers who started at the same level. An academic peer is a student in the same grade and the same subject with the same test score in the previous year.

Growth is responsive to changes in classroom structures and practices.

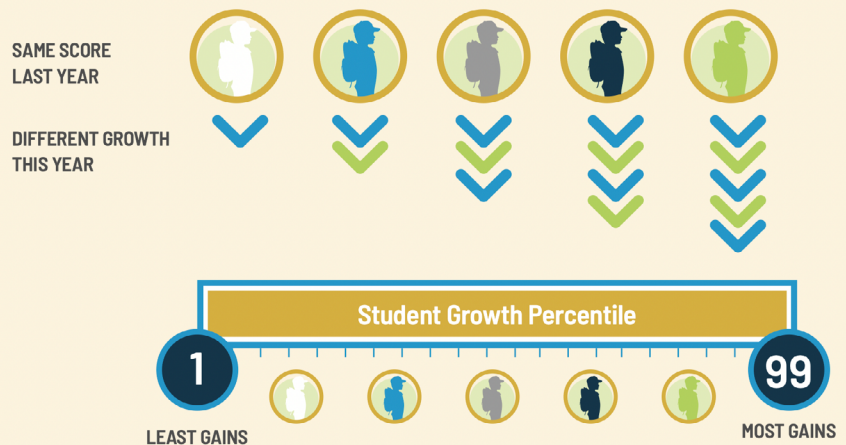
Percentile, Not Percent

The SGP represents a percentile, not a percent. It tells you how your students' growth on average compares to other students' growth. It does not tell you how much they grew – only whether their growth was above or below the state average, which is always the 50th percentile.

Why Growth?

Growth recognizes learning gains for all students, whether or not they achieve proficiency. Compared to other growth measures, school's SGPs had slightly lower correlations with prior year achievement, percent English Learners, percent children with disabilities, and percent low-income.

SGP Compares a Student's Growth to Academic Peers in Illinois



How do I talk about my school's SGP?

Example: 2023 School Cohort ELA SGP of 62.1, compared to 2023 State Cohort ELA SGP of 50 **"Our school achieved higher than average growth. Our students grew faster than 62% of comparable students in the state."**

Example: 2023 School Cohort Math SGP of 42.4, compared to 2023 State Cohort ELA SGP of 50 **"Our students' growth this past year was below the state average, but still within the normal range. Our students' growth was in the 42nd percentile."**

Example: 2023 School Baseline ELA SGP of 65.6, compared to 2019 School Cohort ELA SGP of 47.3 **"Our students continued to experience accelerated growth last year. Our students' growth was in the 65th percentile last year, compared to the 47th percentile in 2019 prior to the pandemic."**

Example: 2023 School Baseline Math SGP of 39.2, compared to 2019 School Cohort Math SGP of 44.1 **"Our students' growth was slower this year than prior to the pandemic. Our students' growth was in the 39th percentile last year, compared to the 44th percentile in 2019."**

What's the difference between proficiency and growth?

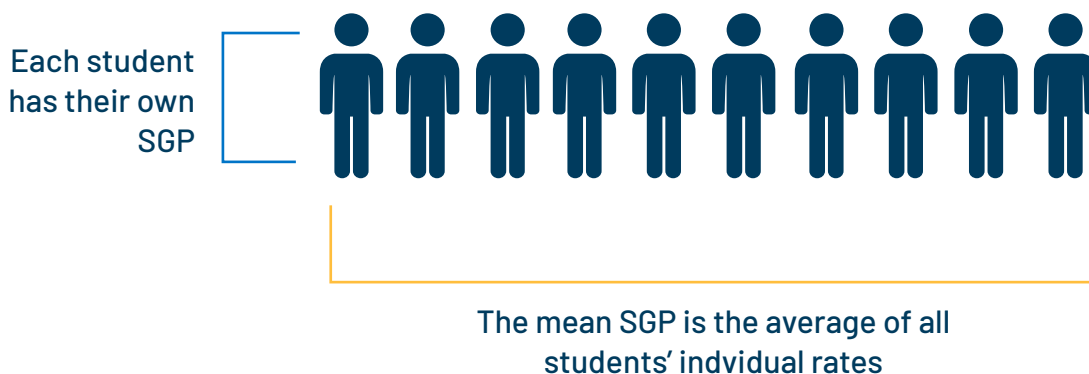
Proficiency shows whether or not students have mastered a common, high standard; it's a yes or no question. Growth is responsive to changes in classroom structures and practices; whereas proficiency correlates strongly with family income and education levels. Growth recognizes progress toward and beyond the standard, no matter where each student started. Demographics do not predict growth. Data show that students of all races, income levels, languages, and disability statutes demonstrate growth across the full range.

Proficiency and Growth: Correlation with Income



What is Mean SGP?

A school's mean SGP is the average of its individual students' SGPs. If 100 cars drive from Springfield to Chicago, each car's "SGP" would be its average rate of speed across the entire journey. The "mean SGP" would be the average of all 100 cars' individual rates. The mean SGP accounts for 50 percent of a P-8 school's annual summative designation.

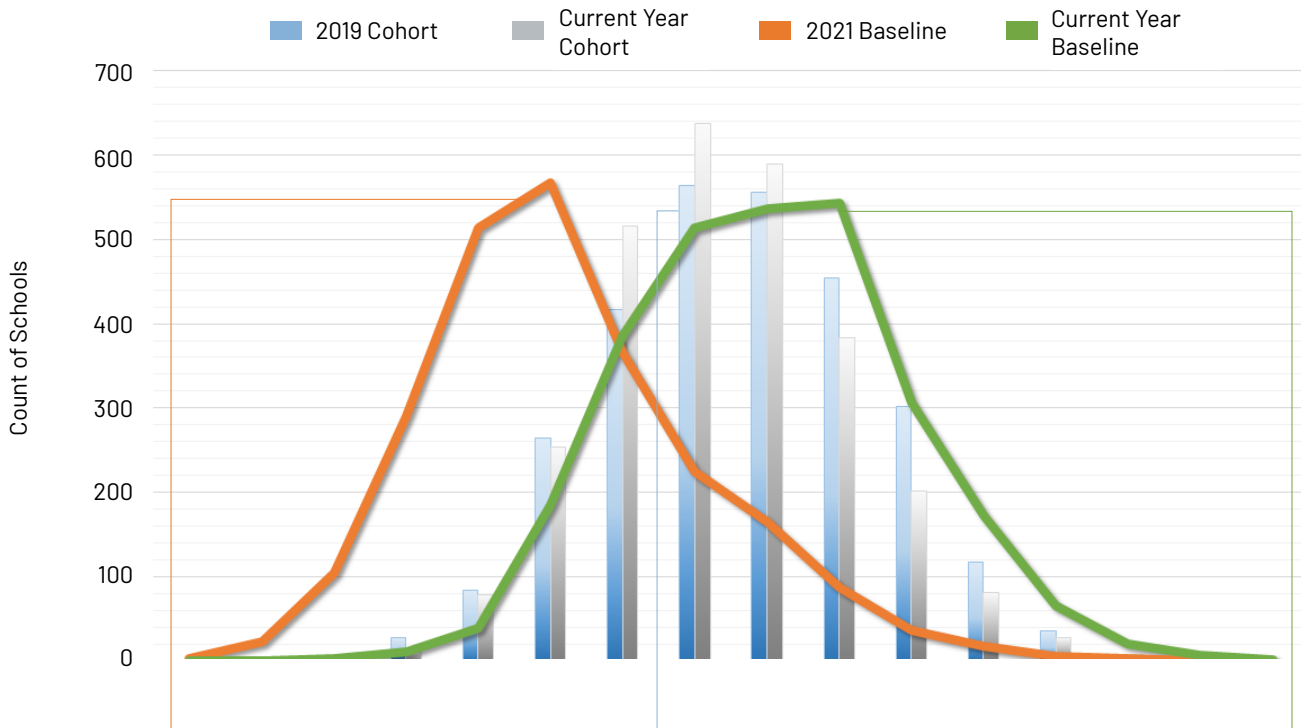


Cohort vs. Baseline SGP

The **cohort SGP** compares the growth of academic peers across the state who had the same scale score **last year**. The state mean SGP will always be the 50th percentile in a cohort SGP calculation.

The **baseline SGP** compares the growth of academic peers across the state to academic peers who had the same scale score in a **specified previous baseline year**. A state mean SGP above the 50th percentile in a baseline SGP calculation means students overall grew more this year than in the prior baseline year.

Sample Distributions of Mean SGPs Cohort vs. Baseline in 2019, 2021, and Current Year



2021 Baseline SGP: State mean in this 2021 baseline SGP, which compares 2021 students to 2019 students, is much lower than in 2019, indicating a much slower rate of growth.

2019 Cohort SGP: State mean in this pre-pandemic cohort SGP is 50. This is the baseline for 2021 and 2022 comparisons.

Current Year Baseline SGP: State mean in this current year baseline SGP is much higher than in 2021 and even higher than the 2019 baseline, indicating that the rate of growth in the current year is even faster than in 2019.

