

ILLINOIS STATE BOARD OF EDUCATION

**100 N. First Street
Springfield, Illinois**

April 15-16, 2009

NOTE: Staff presentations and detailed Board discussion typically take place during Committee meetings one month prior to State Board action in the plenary session.

All open meetings will be audio cast on the Internet at: www.isbe.net

WEDNESDAY, APRIL 15, 2009

- 10:30 a.m. WORK STUDY: Career and Technical Education**
Board Room, 4th Floor
- 12:30 p.m. Break for Lunch with Student Advisory Council**
- *1:30 p.m. Education Policy Planning Committee of the Whole (*immediately following lunch*)**
Board Room, 4th Floor
- *2:30 p.m. Finance & Audit Committee of the Whole**
Board Room, 4th Floor
- *3:30 p.m. Governmental Relations Committee of the Whole**
Board Room, 4th Floor

* The meeting will begin at the conclusion of the previous session.

THURSDAY, APRIL 16, 2009

- 8:30 a.m. Ad Hoc Rules Committee of the Whole**
Board Room, 4th Floor
- *9:00 a.m. Board Operations Committee of the Whole**
Board Room, 4th Floor
- *10:00 a.m. ISBE Plenary Session**
Board Room, 4th Floor

* The meeting will begin at the conclusion of the previous session.

All State Board of Education meetings listed on this agenda will be accessible to persons with disabilities. Persons planning to attend who need special accommodations should contact the Board office no later than the date prior to the meeting. Contact the Superintendent's office at the State Board of Education, Phone: 217-782-2221; TTY/TDD: 17-782-1900; Fax: 217-785-3972.

NOTE: Chairman Ruiz may call to order the Board's plenary session early for the sole purpose of hearing a motion to go into closed session. In such case, the plenary session will reconvene for action items at the time posted. Chairman Ruiz may also call for a break in the plenary session on Thursday at which time the Board will go into closed session.

REVISED
4-13-09

ILLINOIS STATE BOARD OF EDUCATION
PLENARY SESSION
Board Room, 4th Floor
100 North First Street, Springfield, Illinois
April 16, 2009 10:00 a.m.

REVISED
4-13-09

(This meeting will begin immediately following the previous session.)

NOTE: Staff presentations and detailed Board discussion typically take place during Committee meetings one month prior to State Board action in the plenary session.

All meetings will be audio cast on the Internet at www.isbe.net

A. Roll Call/Pledge of Allegiance

1. Consideration of and Possible Actions on Any Requests for Participation in Meeting by Other Means

B. Resolutions & Recognition

C. Public Participation

10:00 – 10:30 a.m.

D. Superintendent's Report

*** Consent Agenda**

All action consideration items listed with an asterisk (*) are considered to be routine and will be enacted in one motion and vote. Any board member who wishes separate discussion on any item listed on the consent agenda may remove that item from the consent agenda, in which event, the item will be considered in its normal sequence.

Action Considerations

consent agenda items: 10:30 – 10:40 a.m.

- *1. Approval of Minutes: March 19, 2009 (*Plenary pp. 3-10*)
- *2. Rules for Initial Review
 - a. Part 65 (New Teacher Induction and Mentoring) (*Rules Packet pp. 3-9*)
 - b. Part 100 (Requirements for Accounting, Budgeting, Financial Reporting, and Auditing) (*handout*)**
- *3. Rules for Adoption
 - a. Part 100 Emergency Amendments (Requirements for Accounting, Budgeting, Financial Reporting, and Auditing) (*see handout*)**
 - b. Part 145 (Temporary Relocation Expenses) (*Rules Packet pp. 10-12*)
 - c. Part 151 (School Construction Program) (*Rules Packet pp. 13-18*)
 - d. Part 675 (Providers of Supplemental Educational Services) (*Rules Packet pp. 19-56*)
- *4. Contracts & Grants Over \$1 Million
 - a. Early Childhood Evaluation Contract with Erickson Institute (*FAC Packet pp. 4-5*)
 - b. Social/Emotional Training & Consultation Contract Renewal w/Erickson (*FAC Packet pp. 6-7*)
 - c. Contract for Monitoring Early Childhood Block Grant Programs: ROE #27 (*FAC Packet pp. 8-9*)
 - d. Special Education Database System (SEDS) Contract with Hupp (*FAC Packet pp. 10-11*)
 - e. Contract for Harrisburg Project - ROE #20 (*FAC Packet pp. 12-13*)
- *5. Approval of Special Education Expenditures & Receipts Report (*FAC Packet pp. 14-92*)
- *6. Authorization for Superintendent – Potential Memorandum of Understanding for Common Core Standards (*EPPC Packet pp. 4-5*)
- *7. Public Participation Policy (*Board Operations Packet pp. 15-18*)

End of consent agenda

8. Delegation of Authority for Mandated Reports (as needed) (*Board Operations Packet pp. 19-33*)
10:40 – 10:45 a.m.
9. FY 2010 Budget (as needed)

E. New Business

F. Announcements and Reports

10:45 – 11:15 a.m.

1. IBHE Liaison Report (*Dr. Proshanta Nandi*) (*not able to attend*)
2. Superintendent's Announcements 10:45 – 10:55 a.m.
3. Chairman's Report 10:55 – 11:05 a.m.
4. Member Reports 11:05 – 11:15 a.m.

G. Information Items

1. ISBE Fiscal & Administrative Monthly Reports (*Plenary pp. 11-39*)

H. Adjourn

NOTE: Chairman Ruiz may call to order the Board's plenary session early for the sole purpose of hearing a motion to go into closed session. In such case, the plenary session will reconvene at the time announced. Chairman Ruiz may also call for a break in the plenary session at which time the Board will go into closed session.

Illinois State Board of Education Meeting
March 19, 2009
Illinois State Board of Education
100 North First Street
Springfield, Illinois

<p>ROLL CALL/PLEDGE OF ALLEGIANCE</p>	<p>Mr. Jesse Ruiz, Chairman, called the meeting to order at 10:30 a.m. Chairman Ruiz asked Ms. Jean Ladage, Assistant to the Board, to call the roll. A quorum was present. Dr. Christopher Koch, State Superintendent of Education, was also in attendance.</p> <p><u>Members Present:</u> Mr. Jesse Ruiz, Chairman Dr. Vinni Hall, Secretary Dr. Andrea Brown Mr. Dean Clark Dr. David Fields Ms. Brenda Holmes Ms. Joyce Karon Ms. Lanita Koster</p> <p><u>Members Absent:</u> Dr. Christopher Ward, Vice Chairman</p>
<p>RESOLUTIONS & RECOGNITIONS</p>	<p>Ms. Karon moved that the State Board of Education adopt the resolutions on pages 4-6 recognizing Niki Annes, the 2009 Art Education Poster Contest Winner from McAuley Liberal Arts High School in Chicago; Rose Schoening, School Nurse at Hadley Jr. High in Glen Ellyn; and Harold Krainock, a retiring Danville School Board Member.</p> <p>Dr. Fields seconded the motion and it passed with a unanimous voice vote.</p> <p>Chairman Ruiz commented that the Board likes to present the resolutions to each recipient in person, but Niki Annes, the 2009 Art Education Poster Contest Winner, is in Rock Island today attending the Illinois Alliance for the Arts 26th Annual Service Recognition Awards Ceremony. The resolution to Rose Schoening will be delivered by board member Dean Clark, and David Fields will deliver Harold Krainock's resolution.</p>
<p>PUBLIC PARTICIPATION</p>	<p>Ms. Nancy Stemper, Co-Chair of Illinois Creates, a statewide arts education coalition, emphasized that the arts play an essential role in a comprehensive education, and that all Illinois students deserve equal access to arts education. She expressed appreciation for the progress being made by the Illinois State Board of Education through the Arts and Foreign Language Grant Program.</p> <p>Doug Snyder, President of Special Olympics Illinois and Dave Breen of that organization spoke on behalf of the Young Athletes Program. Mr. Snyder updated the Board on a pilot initiative that was started three years ago. The initiative works with early childhood children. It began with 1500 children in the 2-7 year old age range and they now have about 3500 children in the program. There are about 3,000 more children across the state that have expressed a desire or need for the program. The program is currently in 53 schools and 23 school districts.</p> <p>In the next 30-45 days there will be approximately 50 events where the athletes will celebrate what they have learned. Mr. Snyder noted that this program cost about \$68.00 per child based on the grant and the amount of individuals they are able to touch. Mr. Snyder and Mr. Breen thanked the</p>

	<p>Board for their time and look forward to a time when they may be able to expand their relationship with ISBE.</p> <p>Ms. Laura Elizabeth Fay, parent and former Board Treasurer at Prairie Crossing Charter School (PCCS) was present to comment on the renewal of the charter for PCCS. Ms. Fay assured the Board that she and other concerned parents are seeking positive change and not attempting to derail the school's charter renewal. She shared with the Board her concerns which included the five-year charter renewal, adequate transportation services, lack of an effective outreach program, student demographics and the lottery process, no free or reduced lunch, special education services, governance/board structure, Open Meetings Act violations, fiscal management and high achievement on Illinois learning standards. Ms. Fay asked that the Board defer action on the charter renewal until the process is complete and the issues have been resolved to ISBE's satisfaction.</p>
<p>CONSENT AGENDA</p>	<p>Chairman Ruiz commented that all items listed with an asterisk (*) on the agenda are considered to be routine and will be enacted in one motion and vote. Any Board members who wish separate discussion on any item listed on the consent agenda may remove that item from the consent agenda, in which event the item will be considered in its normal sequence.</p> <p><u>Motion:</u> Dr. Hall moved that the State Board of Education approve the consent agenda items excluding agenda items D.5.b. McKendree College (continuing approval) and D.5.c. McKendree College (probation) which have been pulled from the consent agenda items and will be discussed and considered separately. Dr. Fields seconded the motion and it passed with a unanimous roll call vote.</p> <p>The following motions were approved by action taken in the consent agenda motion.</p> <p style="text-align: center;"><u>Approval of Minutes</u></p> <p>The State Board of Education hereby approves the minutes for the February 19, 2009 Board Meeting, the February 18, 2009 Early Childhood Work Study and March 2, 2009 Special Meeting.</p> <p style="text-align: center;"><u>Rules for Initial Review</u> Part 575 (School Technology Program)</p> <p>The State Board of Education hereby authorizes the solicitation of public comment on the proposed rulemaking for: School Technology Program (23 Illinois Administrative Code 575), including publication of the proposed amendments in the <u>Illinois Register</u>.</p> <p style="text-align: center;"><u>Contracts & Grants Over \$1 Million</u> Principal Mentoring Program Illinois Principals Association Contract Amendments</p> <p>The Illinois State Board of Education hereby authorizes Agency staff to increase the current contract for FY09 in the amount of \$209,000 for a total of \$2,013,248 and to renew the contract in FY10 for \$2,063,030 (subject to appropriation) with Illinois Principals Association for the management of the New Principal Mentoring Program. The total contract will not exceed \$6,109,956 (which includes \$2,033,678 for FY08).</p>

**World-Class Innovations in Developing Assessments (WIDA)
Memorandum of Understanding (ACCESS for ELLs)**

The State Board hereby authorizes agency staff to extend the Memorandum of Understanding with WIDA for the ACCESS program through June 30, 2012, for an increase of \$14,750,000 and a maximum amount not to exceed \$30,190,050.

Measurement Incorporated - ISAT Writing Contract

The State Board hereby authorizes the State Superintendent to issue an award of contract to Measurement Incorporated for ISAT writing development and scoring, including all services necessary thereto. The initial term of the contract may extend through June 30, 2010, with the option for renewal by ISBE for four additional one year periods. The total for all services is not to exceed \$18,140,295 through July 30, 2014.

**State Career & Technical Education Improvement & Agriculture
Education**

The State Board hereby authorizes the Agency to renew the Parkland College – FCAE grant for FY 10; to the extent such approval is in accordance with all applicable Agency rules and processes.

Revision of 2009 Calendar of Meetings

The State Board of Education hereby approves the Revised 2009 Board Calendar as discussed in the March 18 Board Operations Committee Meeting.

ILLINOIS STATE BOARD OF EDUCATION

Revised March 19, 2009

2009 BOARD MEETING SCHEDULE

January 26-27	Chicago, James R. Thompson Center Office of the Capital Development Board Room 14-612 (Video Conference Room)
February 18-19	Springfield
March 18-19	Springfield
April 15-16	Springfield
May 20-21	Springfield
June 17-18	Belleville Township H.S.D. #201 Board Room 2600 West Main Street, Belleville
July	No Meeting
August 6	Springfield (as needed)
August 18-20	Board Retreat – Bloomington Parke Plaza Hotel & Conference Center 1414 N. Towanda Avenue, Bloomington
September 16-17	Springfield
October 29-30	Springfield
November 18-19	Chicago, James R. Thompson Center Room 16-503 (Senate Hearing Room) James R. Thompson Center, Chicago
December 16-17	Springfield

	<p style="text-align: center;"><u>Teacher Certification Board Recommendations for Program Approvals</u></p> <p><u>Motion: D.5.a. Lewis University</u> The State Board awards <i>continuing approval</i> for Lewis University for the specific professional education preparation programs listed below, as they meet the applicable Illinois content area standards. Elementary Education – Bachelors Science – Biology Science – Chemistry Science – Physics Principal Superintendent</p> <p><u>Motion: 5.D.d. National-Louis University</u> The State Board of Education <i>provisionally approves</i> the Learning Behavior Specialist II (LBS II) – Technology Specialist and the LBS II – Curriculum Adaptation Specialist programs for National-Louis University, thereby authorizing the university to conduct the programs and to recommend candidates for certification by entitlement until the time of the institution’s next accreditation review.</p> <p style="text-align: center;">Approve Annual Financial Profile of School Districts</p> <p>The Illinois State Board of Education hereby approves the financial designations of school districts as set forth in the Fiscal Year 2009 Financial Profile Scores, which has been calculated using the revised methodology with data from the districts’ Fiscal 2008 Annual Financial Reports and, furthermore, recognizes that the districts designated on the Financial Watch List are those so identified from the Fiscal Year 2009 Financial Profile Calculations.</p> <p style="text-align: center;">END OF THE CONSENT AGENDA</p>
<p>D.5.b. McKendree College (continuing approval)</p> <p>D.5.c. McKendree College (probation)</p>	<p>Dr. Hall moved that the State Board awards <i>continuing approval</i> for McKendree College for the specific professional education preparation programs listed below, as they meet the applicable Illinois content area standards. Mathematics Science – Biology Science - Chemistry</p> <p>The State Board further awards <i>probation</i> for McKendree College for the professional education preparation program for Physical Education, as it does not meet the applicable Specialized Professional Association standards.</p> <p>Mr. Clark seconded the vote and it passed with a voice vote. Dr. Brown abstained from the vote.</p>
<p>D.7. Determination of Prairie Crossing Charter Renewal</p>	<p>Superintendent Koch thanked all of the members of the public who participated in public comment regarding the Prairie Crossing Charter School (PCCS) renewal. He thanked PCCS staff and administration for working diligently to provide Agency staff the information they requested, and he thanked ISBE staff who worked hard at analyzing the information to put together a recommendation.</p>

Dr. Koch noted that through discussion in the Education Policy Planning Committee, the Board asked that the motion be modified slightly to add additional components regarding fees and exit summaries that the agency will be collecting. The State Superintendent will review the collected information and, as needed, will bring any recommended actions to the State Board on an annual basis. Through this process the Board can be assured that terms of renewal are being evaluated. Dr. Koch noted that there are different timelines for the information being collected.

Motion

Dr. Fields moved that the State Board of Education approves the renewal of the charter for Prairie Crossing Charter School for five years, contingent on Prairie Crossing continuing to meet the conditions below throughout the term of the renewal. Further the Board authorizes the State Superintendent and General Counsel to further negotiate with Prairie Crossing the specific terms of the conditions prior to execution of the renewal agreement so that progress can be objectively measured.

Mr. Clark seconded the motion and it passed with a unanimous voice vote.

CONDITIONS

Considering all the factors stated above, it is recommended that PCCS be renewed for up to five years contingent on the following items being required in their renewal contract:

i) Governance:

- (1) Minutes from meetings must be posted on the PCCS website in accordance with OMA and once posted, the link to the minutes must be sent to ISBE

ii) Financial:

- (1) The annual budget and end of school year financial report must be posted on the PCCS website and once posted the link must be sent to ISBE
- (2) The fees collected by PCCS are to be itemized and separated in the school's annual audit.

iii) Outreach/Transportation:

- (1) No later than September 15 each year, PCCS must submit for review and approval to ISBE the following items:
 - (a) Outreach materials (translated as much as possible into languages represented in the districts), such as flyers, press releases, newspaper ads, etc. Included in all materials must be references to:
 - (i) How transportation is provided and how assistance will be provided if required, especially to low-income and at-risk pupils
 - (ii) How fee waivers are determined and a description of the process to obtain them
 - (iii) How appropriate services will be provided to Limited English Proficient students
 - (iv) How services are available and provided for Special Education
 - (b) Listing of when, where, and how the information will be distributed and the contact info for each entity that receives the information

	<p>(c) Justification as to why these places were chosen and how this fulfils the outreach requirement to reach the entire geographic and demographics areas of both districts.</p> <p>(2) By April 1 of each year, PCCS will provide a report summarizing the applicant pool by district and the results of the lottery and comparing these results to their student enrollment demographics. The data from this report is to be used by PCCS to modify, as needed, the outreach activities for the next school year to ensure that efforts are being made to reach all students and families of both feeder districts.</p> <p>iv) Fees: PCCS shall demonstrate that any and all fees are comparable to those fees charged by the Fremont and Woodland school districts, and that fee waivers are offered as appropriate.</p> <p>v) Exit Summaries Provision to ISBE of all exit interview summaries.</p>
Closed Session Minutes	This agenda item was deferred until after closed session
NEW BUSINESS	<i>None at this time.</i>
<p>ANNOUNCEMENTS & REPORTS</p> <p>IBHE Liaison Report</p> <p>Superintendents Announcements</p> <p>Chairman's Report</p>	<p>Chairman Ruiz announced that Dr. Proshanta Nandi, the representative from the Illinois Board of Higher Education (IBHE) was not able to attend today' s meeting and has nothing to report at this time. The next IBHE meeting will be held Tuesday, April 7, 2009 at the President Abraham Lincoln Hotel & Conference Center in Springfield.</p> <p>Dr. Koch stated that he traveled to Colfax to visit Ridgeview Elementary School, the first Illinois school to receive the Silver Level Award for the U.S. Healthier School Challenge.</p> <p>Dr. Koch commented that there has been a lot of activity around the stimulus package. He traveled to Washington, D.C. to meet with other chief state school officers, U.S. Secretary of Education Arne Duncan, President Obama and Vice-President Biden. Dr. Koch noted that we have received several invitations to participate in collaborative applications with other states. There will be a more detailed meeting in Chicago on April 17, 2009, to discuss international standards and benchmarks and Superintendent Koch will be accompanied at this meeting by staff from Governor Quinn's office.</p> <p>Superintendent Koch informed the Board that he was introduced to Ms. Julie Smith who will be serving as the Governor's Deputy Chief of Staff for Education. Dr. Koch indicated that he would invite Ms. Smith to attend our Board meetings.</p> <p>Chairman Ruiz announced that Brenda Holmes will be attending the Education Commission of the States' Spring Steering Committee Meeting in Minneapolis, MN on April 21-22, 2009. Travel is funded by ECS.</p> <p>Mr. Ruiz stated that all State Board Committee Memberships and Chairmanships will remain the same as discussed and agreed upon at the February Board Operations Committee meeting.</p> <p>Chairman Ruiz reported that he participated in the following events since the last Board meeting:</p>

<p>Member Reports</p>	<p>Met with Michele Rhee, Chancellor of the D.C. Public Schools, civic leaders, education leaders and a group from Teach for America.</p> <p>Met with the Re-enrolling High School Dropouts Taskforce.</p> <p>Visited Walter Payton High School and the Ounce of Prevention Fund Ed-U-Care Center on the south side of Chicago.</p> <p>Attended the National Board Certified Teacher Celebration in Chicago.</p> <p>Attended the Chicago Children’s Choir Performance which his son participated in.</p> <p>Keynote speaker at the Cicero Chamber of Commerce.</p>
<p>Dean Clark</p>	<p>Mr. Clark reported that he and Ms. Karon attended a panel discussion on Consumer Price Index (CPI) issues related to tax capped counties. The panel discussion was sponsored by ED-RED, School Business Officials and LEND on March 6, 2009 at Forest View High School.</p>
<p>Brenda Holmes</p>	<p>Ms. Holmes commented that the General Assembly has until May 1, 2009, to respond the 2009 Spring Waiver Report.</p> <p>Ms. Holmes reported that she spoke with Regional Superintendents on effective lobbying techniques. Also discussed were the relationship of the Board with the Regional Superintendents and the stimulus package.</p>
<p>Andrea Brown</p>	<p>Dr. Brown shared that she and Janet Milkovich, of Reading for the Blind and Dyslexic, visited three Special Education Cooperatives in Southern Illinois and made contact with two other cooperatives. Ms. Milkovich will be meeting regularly with vision teachers in the southern part of the state.</p>
<p>Vinni Hall</p>	<p>Dr. Hall attended the NASBE Annual Legislative Conference and NASBE/ CCSSO Preconference in Washington, D.C. She also visited Capitol Hill and made several contacts with federal officials. Dr. Hall attended the NASBE Study Group on March 13, 2009 in Arlington, Virginia and she has been asked to participate in judging an essay contest for the Chicago Tribune that will award scholarships to the winners. Dr. Hall will be working with teachers at the Art Institute on March 27, 2009, in cooperation with DePaul University. She will also be speaking to the faculty at the University of Illinois and will be going to Orr High School to talk with students.</p>
<p>David Fields</p>	<p>Dr. Fields informed the Board that he spoke to the Illinois Association of School Administrators in Urbana.</p>
<p>Lanita Koster</p>	<p>Ms. Koster reported that she visited Olympia Fields on March 3, 2009, and had an opportunity to see their education commission at work. Ms. Koster stated that she will be joining Dr. Hall and Ms. Karon at the judging of the Chicago Tribune essay contest.</p>
<p>Jesse Ruiz</p>	<p>Chairman Ruiz took time to speak to the Board regarding Representative Lou Lang’s legislation (HB 80). Chairman Ruiz encouraged all those in attendance to speak with their legislators about this bill. Mr. Ruiz said he enjoys public service and it is hard for him not to take this legislative proposal personally. Chairman Ruiz stated that he will be talking more to legislators to let them know that this is not a good bill to move forward.</p>

CHAIRMAN'S ANNOUNCEMENT PRIOR TO CLOSED SESSION	Chairman Ruiz announced that prior to entertaining a motion for closed session, following lunch and closed session, the Board will reconvene the meeting and possibly act on the closed session minutes.
CLOSED SESSION	<p>Dr. Hall moved that the Board enter into closed session under the exceptions set forth in the Open Meetings Act of the State of Illinois as follows:</p> <p>Section c1 for the purpose of considering the appointment, employment, compensation, performance or dismissal of an employee; and</p> <p>Section c11 for the purpose of considering pending or probable litigation against or affecting the Board.</p> <p>Section c21 for the purpose of discussing minutes of meetings lawfully closed under the Open Meeting Act.</p> <p>Dr. Hall further moved that the Board may invite anyone they wish to have included in this closed session.</p> <p>Dr. Fields seconded the motion and it passed with unanimous roll call vote.</p> <p>The open meeting recessed at 11:10 a.m. and the Board went into closed session at 11:20 a.m. The open meeting reconvened at 12:24 p.m.</p>
Closed Session Minutes	<p>Dr. Hall moved that the following motion be adopted:</p> <p>Pursuant to Section 2.06(d) of the Open Meetings Act, the State Board of Education has reviewed the minutes of its closed sessions from October 2008 through February, 2009; and</p> <p>Pursuant to Section 2.06(c) of the Open Meetings Act which allows for the destruction of the verbatim recordings of closed sessions (no less than 18 months after the completion of the meeting recorded);</p> <p>Therefore, I move that the State Board of Education hereby release the closed session minutes for February 19, 2009, and certifies that the need for confidentiality still exists for the remainder of the closed session minutes during the time period reviewed.</p> <p>Further, the State Board of Education approves the destruction of all closed session verbatim recordings prior to September 19, 2007.</p> <p>Mr. Clark seconded the motion and it passed with a unanimous voice vote.</p>
Motion for Adjournment	Mr. Clark moved that the meeting be adjourned. Dr. Fields seconded the motion and it passed with unanimous voice vote. The meeting adjourned at 12:30 p.m.

Respectfully Submitted,

Dr. Vinni Hall
Board Secretary

Mr. Jesse Ruiz
Chairman

ILLINOIS STATE BOARD OF EDUCATION MEETING
April 15, 2009

TO: Illinois State Board of Education

FROM: Christopher A. Koch, Ed.D., State Superintendent of Education
Linda Riley Mitchell, Chief Financial Officer 
Donald W. Evans, Director of Human Resources, Professional 
Development and Conference Planning

Agenda Topic: Information Item: SBE Fiscal & Administrative Monthly Reports

Materials: Appropriations and Spending by Program
Financial Status Report (contract & grant detail)
Comparative Statement of Expenditures
Monthly Headcount Graph, Staff Detail, Personnel Transactions

Purpose of Agenda Item

To provide the Board standard reports with key information on fiscal and administrative activities of the state Agency.

Relationship to/Implications for the State Board's Strategic Plan

Not applicable – informational item only.

Expected Outcome(s) of Agenda Item

Not applicable – informational item only.

Background Information

In June 2002, the State Board adopted bylaws outlining a new committee structure under which fiscal, audit and operations issues will be handled by the Finance and Audit Committee. The Superintendent requested that the Agency organize and standardize the financial and headcount data provided to the Board for their future policy work and decision making.

Currently, the following reports are provided:

1. Budget/Annual Report (annually in January)
2. Condition of Public Education (December)
3. Comptroller SEA Report (annually in February)
4. Appropriation and Expenditure (monthly)
5. Financial Status Report – Contract/Grant Detail (monthly)
6. Comparative Statement of Expenditures (monthly)
7. Headcount Reports (monthly)
Personnel Transactions, Staff Detail by Division, & Monthly Headcount Graph

Analysis and Implications for Policy, Budget, Legislative Action and Communications

The monthly or Quarterly Fiscal and Headcount Reports were first provided to the Board in August 2002. These reports provide information regarding staffing and funding as well as details of contracts over \$50,000 and grants the Agency is processing.

All contracts and grants totaling over \$1 million are reviewed at the Board level. Included in this month's review are:

- Early Childhood Evaluation contract with Erickson Institute
- Social/Emotional Training & Consultation contract renewal with Erickson Institute
- Early Childhood Block Grant programs contract for monitoring with ROE #27
- Special Education Database System contract with Hupp Information Technologies
- ROE#20 Harrisburg Project contract renewal

Superintendent's Recommendation

None needed.

Next Steps

Continue to provide these reports pursuant to the schedule above.

Illinois State Board of Education

FY 2009 Appropriation & Spending by Program 07/01/2008 thru 03/31/2009

(Dollars in Thousands)

Initiatives	Appropriation			YTD Expenditures		
	Total	Grants	Admin	Total	Grants	Admin
STATE						
Distributive Grants	<u>\$6,582,543.5</u>	<u>\$6,582,543.5</u>	<u>\$0.0</u>	<u>\$4,727,158.7</u>	<u>\$4,727,158.7</u>	<u>\$0.0</u>
General State Aid	\$4,590,259.9	\$4,590,259.9	\$0.0	\$3,334,154.1	\$3,334,154.1	\$0.0
General State Aid/Hold Harmless	\$26,106.4	\$26,106.4	\$0.0	\$26,106.4	\$26,106.4	\$0.0
Charter Schools - Transition Impact Aid	\$3,421.5	\$3,421.5	\$0.0	\$2,567.0	\$2,567.0	\$0.0
District Consolidation Cost	\$7,850.0	\$7,850.0	\$0.0	\$5,475.3	\$5,475.3	\$0.0
Fast Growth Grants	\$7,500.0	\$7,500.0	\$0.0	\$7,500.0	\$7,500.0	\$0.0
Gifted Education	\$7,000.0	\$7,000.0	\$0.0	\$0.0	\$0.0	\$0.0
Homeless Education	\$3,000.0	\$3,000.0	\$0.0	\$71.0	\$71.0	\$0.0
School Breakfast Incentive Program	\$723.5	\$723.5	\$0.0	\$153.8	\$153.8	\$0.0
School Safety & Education Block Grant (ADA)	\$74,841.0	\$74,841.0	\$0.0	\$37,428.1	\$37,428.1	\$0.0
Transition Assistance	\$36,763.6	\$36,763.6	\$0.0	\$0.0	\$0.0	\$0.0
Textbook Loan Program	\$42,826.5	\$42,826.5	\$0.0	\$0.0	\$0.0	\$0.0
Mandated Categoricals	<u>\$1,782,251.1</u>	<u>\$1,782,251.1</u>	<u>\$0.0</u>	<u>\$1,313,703.0</u>	<u>\$1,313,703.0</u>	<u>\$0.0</u>
Illinois Free Lunch/Breakfast	\$26,300.0	\$26,300.0	\$0.0	\$21,506.2	\$21,506.2	\$0.0
Orphanage Tuition 18-3 (Reg Ed)	\$11,600.0	\$11,600.0	\$0.0	\$8,724.4	\$8,724.4	\$0.0
Sp-Ed - Extraordinary Services	\$331,051.1	\$331,051.1	\$0.0	\$269,992.2	\$269,992.2	\$0.0
Sp-Ed - Orphanage Tuition 14-7.03	\$101,800.0	\$101,800.0	\$0.0	\$80,582.5	\$80,582.5	\$0.0
Sp-Ed - Personnel Reimbursement	\$426,100.0	\$426,100.0	\$0.0	\$339,921.3	\$339,921.3	\$0.0
Sp-Ed - Private Tuition	\$151,600.0	\$151,600.0	\$0.0	\$131,929.3	\$131,929.3	\$0.0
Sp-Ed - Summer School	\$11,000.0	\$11,000.0	\$0.0	\$10,854.4	\$10,854.4	\$0.0
Sp-Ed - Transportation	\$383,300.0	\$383,300.0	\$0.0	\$199,220.2	\$199,220.2	\$0.0
Transportation - Regular/Vocational	\$339,500.0	\$339,500.0	\$0.0	\$250,972.6	\$250,972.6	\$0.0
Standards - Assessment & Accountability	<u>\$36,324.7</u>	<u>\$3,042.7</u>	<u>\$33,282.0</u>	<u>\$14,392.1</u>	<u>\$2,437.3</u>	<u>\$11,954.9</u>
Assessments	\$29,982.0	\$0.0	\$29,982.0	\$11,604.8	\$0.0	\$11,604.8
Growth Model	\$3,000.0	\$0.0	\$3,000.0	\$267.5	\$0.0	\$267.5
System of Support	\$3,342.7	\$3,042.7	\$300.0	\$2,519.8	\$2,437.3	\$82.6
Ensuring Quality Ed Personnel	<u>\$33,670.0</u>	<u>\$30,562.6</u>	<u>\$3,107.4</u>	<u>\$7,764.8</u>	<u>\$6,540.9</u>	<u>\$1,223.9</u>
Grow Your Own Teachers	\$3,500.0	\$3,031.2	\$468.8	\$2,309.3	\$1,999.4	\$309.9
National Board Certification	\$11,485.0	\$11,485.0	\$0.0	\$0.0	\$0.0	\$0.0
Principal Mentoring Program	\$3,100.0	\$1,082.6	\$2,017.4	\$603.4	\$0.0	\$603.4

Initiatives	Appropriation			YTD Expenditures		
	Total	Grants	Admin	Total	Grants	Admin
Chicago Principals and Admin Association	\$1,000.0	\$1,000.0	\$0.0	\$0.0	\$0.0	\$0.0
Teach for America	\$450.0	\$450.0	\$0.0	\$337.5	\$337.5	\$0.0
Teacher and Admin. Mentoring Program	\$14,000.0	\$13,378.8	\$621.2	\$4,437.4	\$4,126.8	\$310.6
Teacher of the Year	\$135.0	\$135.0	\$0.0	\$77.1	\$77.1	\$0.0
Reading Improvement Block Grant	<u>\$76,139.8</u>	<u>\$76,139.8</u>	<u>\$0.0</u>	<u>\$48,808.3</u>	<u>\$48,808.3</u>	<u>\$0.0</u>
Early Childhood	<u>\$380,261.4</u>	<u>\$375,789.5</u>	<u>\$4,471.9</u>	<u>\$287,208.9</u>	<u>\$284,771.0</u>	<u>\$2,437.9</u>
Academic Difficulty	<u>\$136,503.7</u>	<u>\$136,503.7</u>	<u>\$0.0</u>	<u>\$106,524.6</u>	<u>\$106,524.6</u>	<u>\$0.0</u>
Alternative Learning/Regional Safe Schools	\$18,535.5	\$18,535.5	\$0.0	\$15,256.8	\$15,256.8	\$0.0
Bilingual Education	\$75,652.0	\$75,652.0	\$0.0	\$56,726.4	\$56,726.4	\$0.0
Extended Learning Op (Summer Bridges)	\$22,238.1	\$22,238.1	\$0.0	\$17,153.0	\$17,153.0	\$0.0
Truant Alternative Optional Education	\$20,078.1	\$20,078.1	\$0.0	\$17,388.3	\$17,388.3	\$0.0
Learning Technologies	<u>\$4,169.7</u>	<u>\$2,719.7</u>	<u>\$1,450.0</u>	<u>\$3,407.8</u>	<u>\$2,157.8</u>	<u>\$1,250.0</u>
Technology for Success	\$4,169.7	\$2,719.7	\$1,450.0	\$3,407.8	\$2,157.8	\$1,250.0
School Infrastructure	<u>\$100.0</u>	<u>\$0.0</u>	<u>\$100.0</u>	<u>\$100.0</u>	<u>\$0.0</u>	<u>\$100.0</u>
Temporary Relocation Expense Fund Deposit	\$100.0	\$0.0	\$100.0	\$100.0	\$0.0	\$100.0
Career Preparation	<u>\$46,073.2</u>	<u>\$46,073.2</u>	<u>\$0.0</u>	<u>\$39,651.9</u>	<u>\$39,651.9</u>	<u>\$0.0</u>
Agricultural Education	\$3,381.2	\$3,381.2	\$0.0	\$2,533.1	\$2,533.1	\$0.0
Career and Technical Education	\$38,562.1	\$38,562.1	\$0.0	\$33,689.6	\$33,689.6	\$0.0
Illinois Governmental Internship Program	\$129.9	\$129.9	\$0.0	\$95.9	\$95.9	\$0.0
Jobs for Illinois Graduates	\$4,000.0	\$4,000.0	\$0.0	\$3,333.3	\$3,333.3	\$0.0
Regional Services	<u>\$16,090.0</u>	<u>\$16,090.0</u>	<u>\$0.0</u>	<u>\$13,024.7</u>	<u>\$13,024.7</u>	<u>\$0.0</u>
Regional Superintendent Initiatives	\$500.0	\$500.0	\$0.0	\$408.3	\$408.3	\$0.0
ROE - Bus Driver Training	\$70.0	\$70.0	\$0.0	\$70.0	\$70.0	\$0.0
ROE - Salaries	\$9,100.0	\$9,100.0	\$0.0	\$6,753.4	\$6,753.4	\$0.0
ROE - School Service	\$6,318.0	\$6,318.0	\$0.0	\$5,691.0	\$5,691.0	\$0.0
ROE - Supervisory Expenses	\$102.0	\$102.0	\$0.0	\$102.0	\$102.0	\$0.0
Strategic Plan	<u>\$500.0</u>	<u>\$0.0</u>	<u>\$500.0</u>	<u>\$251.9</u>	<u>\$0.0</u>	<u>\$251.9</u>
Strategic Plan	\$500.0	\$0.0	\$500.0	\$251.9	\$0.0	\$251.9
Administration	<u>\$24,365.2</u>	<u>\$0.0</u>	<u>\$24,365.2</u>	<u>\$18,090.9</u>	<u>\$0.0</u>	<u>\$18,090.9</u>
Targeted Initiatives	<u>\$73,657.7</u>	<u>\$72,192.9</u>	<u>\$1,464.8</u>	<u>\$40,489.5</u>	<u>\$39,967.4</u>	<u>\$522.1</u>
Adler Planetarium	\$200.0	\$200.0	\$0.0	\$0.0	\$0.0	\$0.0

Initiatives	Appropriation			YTD Expenditures		
	Total	Grants	Admin	Total	Grants	Admin
Advanced Placement Classes	\$1,646.9	\$1,635.3	\$11.6	\$1,212.1	\$1,212.1	\$0.0
Aerospace Education Initiative - Chicago	\$920.0	\$920.0	\$0.0	\$891.0	\$891.0	\$0.0
After School Programs	\$9,700.0	\$9,700.0	\$0.0	\$1,062.3	\$1,062.3	\$0.0
After School Matters	\$500.0	\$500.0	\$0.0	\$0.0	\$0.0	\$0.0
Agudath Israel of America-Sch. Transportation	\$1,200.0	\$1,200.0	\$0.0	\$981.8	\$981.8	\$0.0
Arts and Foreign Language	\$4,000.0	\$4,000.0	\$0.0	\$2,145.8	\$2,145.8	\$0.0
Autism Project	\$100.0	\$100.0	\$0.0	\$88.9	\$88.9	\$0.0
Blind & Dyslexic	\$1,218.8	\$1,218.8	\$0.0	\$1,218.0	\$1,218.0	\$0.0
Children's Mental Health Partnership	\$3,000.0	\$2,496.8	\$503.2	\$1,503.5	\$1,403.8	\$99.7
Class Size Reduction Pilot Project	\$8,000.0	\$8,000.0	\$0.0	\$4,027.1	\$4,027.1	\$0.0
Classroom Cubed	\$2,000.0	\$2,000.0	\$0.0	\$1,434.7	\$1,434.7	\$0.0
Community Residential Services Authority	\$575.0	\$0.0	\$575.0	\$395.5	\$0.0	\$395.5
Educator Midsconduct Investigations	\$375.0	\$0.0	\$375.0	\$26.8	\$0.0	\$26.8
Hard to Staff Schools Incentives	\$3,000.0	\$3,000.0	\$0.0	\$0.0	\$0.0	\$0.0
Healthy Kids/Healthy Minds - Chicago	\$3,000.0	\$3,000.0	\$0.0	\$2,250.0	\$2,250.0	\$0.0
Healthy Kids/Healthy Minds - Cicero & Berwy	\$1,000.0	\$1,000.0	\$0.0	\$0.0	\$0.0	\$0.0
Illinois Economic Education	\$250.0	\$250.0	\$0.0	\$205.2	\$205.2	\$0.0
Materials Center for the Visually Impaired	\$2,121.0	\$2,121.0	\$0.0	\$1,700.0	\$1,700.0	\$0.0
Metro East Consortium for Child Advocacy	\$217.1	\$217.1	\$0.0	\$173.7	\$173.7	\$0.0
Minority Transition Program	\$578.8	\$578.8	\$0.0	\$468.4	\$468.4	\$0.0
Museum of Science and Industry	\$200.0	\$200.0	\$0.0	\$0.0	\$0.0	\$0.0
Parental Participation Pilot Project	\$100.0	\$100.0	\$0.0	\$95.0	\$95.0	\$0.0
Philip J. Rock Center & School	\$3,577.8	\$3,577.8	\$0.0	\$3,227.8	\$3,227.8	\$0.0
Re-Enrolling Students Program	\$4,000.0	\$4,000.0	\$0.0	\$3,460.0	\$3,460.0	\$0.0
Response to Intervention	\$2,000.0	\$2,000.0	\$0.0	\$0.0	\$0.0	\$0.0
Rural Technology Initiative	\$4,000.0	\$4,000.0	\$0.0	\$0.0	\$0.0	\$0.0
Targeted Interventions	\$4,000.0	\$4,000.0	\$0.0	\$1,763.3	\$1,763.3	\$0.0
Tax Equivalent Grants	\$222.6	\$222.6	\$0.0	\$222.6	\$222.6	\$0.0
Transportation Reimbursement to Parents	\$11,954.7	\$11,954.7	\$0.0	\$11,935.9	\$11,935.9	\$0.0
Reappropriations	<u>\$40,070.5</u>	<u>\$39,636.5</u>	<u>\$434.0</u>	<u>\$39,842.1</u>	<u>\$39,425.0</u>	<u>\$417.2</u>
Textbook Loan Reappropriation	\$40,070.5	\$39,636.5	\$434.0	\$39,842.1	\$39,425.0	\$417.2
NON STATE						
School Infrastructure Fund	<u>\$113.0</u>	<u>\$0.0</u>	<u>\$113.0</u>	<u>\$77.0</u>	<u>\$0.0</u>	<u>\$77.0</u>
School Infrastructure (Debt Admin)	\$113.0	\$0.0	\$113.0	\$77.0	\$0.0	\$77.0

Initiatives	Appropriation			YTD Expenditures		
	Total	Grants	Admin	Total	Grants	Admin
Driver Education	<u>\$18,010.4</u>	<u>\$17,929.6</u>	<u>\$80.8</u>	<u>\$13,501.1</u>	<u>\$13,446.3</u>	<u>\$54.8</u>
Other Funds	<u>\$25,528.9</u>	<u>\$7,420.0</u>	<u>\$18,108.9</u>	<u>\$5,950.5</u>	<u>\$2,353.1</u>	<u>\$3,597.4</u>
Charter Schools Revolving Loan Fund	\$20.0	\$20.0	\$0.0	\$0.0	\$0.0	\$0.0
Emergency Financial Assistance Fund	\$1,000.0	\$1,000.0	\$0.0	\$0.0	\$0.0	\$0.0
Indirect Costs	\$7,015.2	\$0.0	\$7,015.2	\$2,417.1	\$0.0	\$2,417.1
ISBE Special Purpose Trust Fund	\$8,484.8	\$0.0	\$8,484.8	\$18.6	\$0.0	\$18.6
ISBE Teacher Certificate Institute Fund	\$1,008.9	\$0.0	\$1,008.9	\$215.1	\$0.0	\$215.1
School Technology Revolving Loan	\$5,000.0	\$5,000.0	\$0.0	\$1,912.3	\$1,912.3	\$0.0
Teacher Certification Fee Revolving Fund	\$1,600.0	\$0.0	\$1,600.0	\$946.6	\$0.0	\$946.6
Temporary Relocation Revolving Fund	\$1,400.0	\$1,400.0	\$0.0	\$440.9	\$440.9	\$0.0

FEDERAL

Federal Funds	<u>\$2,295,036.9</u>	<u>\$2,224,431.8</u>	<u>\$70,605.1</u>	<u>\$1,278,652.0</u>	<u>\$1,251,237.3</u>	<u>\$27,414.7</u>
Advanced Placement Fee Payment	\$2,144.0	\$2,000.0	\$144.0	\$746.8	\$746.8	\$0.0
Career & Technical Education	\$56,249.4	\$55,000.0	\$1,249.4	\$33,956.2	\$33,350.4	\$605.8
Career & Technical Education - Technical Prep	\$5,232.0	\$5,000.0	\$232.0	\$3,036.3	\$2,931.5	\$104.8
Charter Schools	\$6,213.0	\$6,000.0	\$213.0	\$494.2	\$452.4	\$41.8
Child Nutrition	\$534,075.8	\$525,000.0	\$9,075.8	\$356,228.7	\$351,186.3	\$5,042.5
Illinois Purchase Care Review Board	\$280.5	\$0.0	\$280.5	\$208.8	\$0.0	\$208.8
Individuals with Disabilities Educ. Act, Pt. B	\$581,922.8	\$570,000.0	\$11,922.8	\$360,555.3	\$354,220.7	\$6,334.7
IDEA - Deaf Blind, Part C	\$450.0	\$450.0	\$0.0	\$212.0	\$212.0	\$0.0
IDEA - Improvement Plan	\$2,730.3	\$2,500.0	\$230.3	\$892.0	\$855.2	\$36.8
IDEA - Model Outreach	\$400.0	\$400.0	\$0.0	\$0.0	\$0.0	\$0.0
IDEA - Pre-School	\$25,793.4	\$25,000.0	\$793.4	\$12,287.3	\$11,902.4	\$384.9
Learn and Serve America	\$2,552.0	\$2,500.0	\$52.0	\$475.3	\$437.3	\$38.0
Math & Science Partnerships	\$9,406.0	\$9,000.0	\$406.0	\$2,040.6	\$1,887.6	\$152.9
Integration of Schools & Mental Health System	\$400.0	\$166.3	\$233.7	\$86.1	\$25.8	\$60.3
National Center for Education Statistics	\$187.5	\$0.0	\$187.5	\$104.7	\$0.0	\$104.7
ONPAR	\$2,000.0	\$800.0	\$1,200.0	\$129.7	\$129.7	\$0.0
Refugee	\$2,001.0	\$2,000.0	\$1.0	\$0.0	\$0.0	\$0.0
School Health Programs	\$1,039.9	\$0.0	\$1,039.9	\$179.0	\$0.0	\$179.0
Title I - Basic Programs	\$641,736.0	\$634,905.0	\$6,831.0	\$359,687.8	\$356,474.8	\$3,213.0
Title I - Comprehensive School Reform	\$65.9	\$0.0	\$65.9	\$0.0	\$0.0	\$0.0
Title I - Education of Migratory Children	\$4,778.3	\$4,695.0	\$83.3	\$638.9	\$614.8	\$24.1
Title I - Even Start Family Literacy Programs	\$4,815.1	\$4,500.0	\$315.1	\$1,971.8	\$1,871.1	\$100.7
Title I - Neglected and Delinquent	\$1,436.5	\$1,400.0	\$36.5	\$785.3	\$785.3	\$0.0

Initiatives	Appropriation			YTD Expenditures		
	Total	Grants	Admin	Total	Grants	Admin
Title I - Reading First	\$62,636.2	\$60,000.0	\$2,636.2	\$20,098.8	\$19,379.4	\$719.4
Title I - School Improvement	\$30,891.2	\$29,500.0	\$1,391.2	\$17,519.8	\$17,000.2	\$519.6
Title II - Enhance Ed through Technology	\$20,817.5	\$20,000.0	\$817.5	\$7,745.5	\$7,572.3	\$173.3
Title II - Quality Teachers	\$137,817.3	\$135,000.0	\$2,817.3	\$53,712.1	\$52,911.1	\$801.0
Title III - English Language Acquisition	\$41,816.5	\$40,000.0	\$1,816.5	\$8,423.5	\$7,919.8	\$503.7
Title IV - 21st Century Schools	\$56,590.8	\$55,000.0	\$1,590.8	\$21,059.3	\$20,305.0	\$754.2
Title IV - Safe & Drug Free Schools	\$15,322.7	\$15,000.0	\$322.7	\$5,153.8	\$4,968.9	\$184.9
Title V - Innovative Programs	\$8,280.7	\$8,000.0	\$280.7	\$117.7	\$117.7	\$0.0
Title VI - Rural & Low Income Programs	\$1,531.5	\$1,500.0	\$31.5	\$462.4	\$462.4	\$0.0
Title VI - State Assessment	\$23,780.3	\$0.0	\$23,780.3	\$7,003.6	\$0.0	\$7,003.6
Title X - McKinney Homeless Assistance	\$3,511.7	\$3,250.0	\$261.7	\$2,115.8	\$2,044.5	\$71.3
Transition to Teaching	\$1,131.3	\$1,000.0	\$131.3	\$483.0	\$432.1	\$51.0
Special Congressional Initiatives	\$5,000.0	\$4,865.5	\$134.5	\$39.7	\$39.7	\$0.0
TOTAL - ALL FUNDS:	\$9,789,158.6	\$9,631,075.4	\$158,083.2	\$6,644,896.9	\$6,577,504.2	\$67,392.6

ILLINOIS STATE BOARD OF EDUCATION
Financial Status Report
July 1, 2008 through March 31, 2009
(Fiscal Year 2009)

	Appropriation Amount	Expenditures to Date	Unexpended Appropriation	Percentage spent YTD	Percentage Unexpended
<u>General Revenue Fund</u>					
Personal Services and Related Expenditures	17,490,536	13,491,241	3,999,295	77.13%	22.87%
Contractual Services	5,857,200	4,099,795	1,757,405	70.00%	30.00%
Travel	313,700	183,515	130,185	58.50%	41.50%
Commodities	59,100	51,799	7,301	87.65%	12.35%
Printing	85,200	23,885	61,315	28.03%	71.97%
Equipment	70,900	7,920	62,980	11.17%	88.83%
Telecommunications	468,600	222,026	246,574	47.38%	52.62%
Operation of Automotive Equipment	20,000	10,696	9,304	53.48%	46.52%
Lump Sums	33,502,000	12,349,053	21,152,947	36.86%	63.14%
<i>Sub-total</i>	57,867,236	30,439,931	27,427,305	52.60%	47.40%
Awards and Grants	2,543,734,893	1,812,106,276	731,628,617	71.24%	28.76%
Total General Revenue Fund	2,601,602,129	1,842,546,207	759,055,922	70.82%	29.18%
<u>Education Assistance Fund</u>					
Awards and Grants	1,372,627,300	712,357,759	660,269,541	51.90%	48.10%
Total Education Assistance Fund	1,372,627,300	712,357,759	660,269,541	51.90%	48.10%
<u>Common School Fund</u>					
Regional Superintendent Salaries	9,100,000	6,753,389	2,346,611	74.21%	25.79%
General State Aid	3,467,140,000	2,785,058,973	682,081,027	80.33%	19.67%
Total Common School Fund	3,476,240,000	2,791,812,362	684,427,638	80.31%	19.69%
<u>Teacher Certification Fee Revolving Fund</u>					
Lump Sums	1,600,000	946,633	653,367	59.16%	40.84%
Total Teacher Certification Fee Revolving Fund	1,600,000	946,633	653,367	59.16%	40.84%

ILLINOIS STATE BOARD OF EDUCATION
Financial Status Report
July 1, 2008 through March 31, 2009
(Fiscal Year 2009)

	Appropriation Amount	Expenditures to Date	Unexpended Appropriation	Percentage spent YTD	Percentage Unexpended
<u>Drivers Education Fund</u>					
Personal Services and Related Expenditures	80,800	54,813	25,987	67.84%	32.16%
Awards and Grants	17,929,600	13,446,256	4,483,344	74.99%	25.01%
Total Drivers Education Fund	18,010,400	13,501,069	4,509,331	74.96%	25.04%
<u>School Dist. Emergency Financial Asst. Fund</u>					
Awards and Grants	1,000,000	-	1,000,000	0.00%	100.00%
<u>SBE Special Purpose Trust Fund</u>					
Lump Sums	15,500,000	2,435,660	13,064,340	15.71%	84.29%
<u>SBE Teacher Certification Institution Fund</u>					
Lump Sums	1,008,900	215,068	793,832	21.32%	78.68%
<u>SBE Federal Department of Agriculture Fund</u>					
Personal Services and Related Expenditures	5,015,800	3,465,333	1,550,467	69.09%	30.91%
Contractual Services	3,250,000	1,330,053	1,919,947	40.92%	59.08%
Travel	375,000	172,048	202,952	45.88%	54.12%
Commodities	85,000	15,054	69,946	17.71%	82.29%
Printing	150,000	15,174	134,826	10.12%	89.88%
Equipment	150,000	44,830	105,170	29.89%	70.11%
Telecommunications	50,000	-	50,000	0.00%	100.00%
Sub-total	9,075,800	5,042,493	4,033,307	55.56%	44.44%
Awards and Grants	525,000,000	351,186,253	173,813,747	66.89%	33.11%
Total SBE Federal Department of Agriculture Fund	534,075,800	356,228,746	177,847,054	66.70%	33.30%

ILLINOIS STATE BOARD OF EDUCATION
Financial Status Report
July 1, 2008 through March 31, 2009
(Fiscal Year 2009)

	Appropriation Amount	Expenditures to Date	Unexpended Appropriation	Percentage spent YTD	Percentage Unexpended
<u>SBE Federal Agency Services Fund</u>					
Personal Services and Related Expenditures	120,900	89,175	31,725	73.76%	26.24%
Contractual Services	900,000	109,577	790,423	12.18%	87.82%
Travel	30,000	8,237	21,763	27.46%	72.54%
Commodities	15,000	10,001	4,999	66.67%	33.33%
Printing	7,000	-	7,000	0.00%	100.00%
Equipment	11,000	-	11,000	0.00%	100.00%
Telecommunications	9,000	-	9,000	0.00%	100.00%
<i>Sub-total</i>	1,092,900	216,990	875,910	19.85%	80.15%
Awards and Grants	4,500,000	437,308	4,062,692	9.72%	90.28%
Total SBE Federal Agency Services Fund	5,592,900	654,298	4,938,602	11.70%	88.30%
<u>SBE Federal Department of Education Fund</u>					
Personal Services and Related Expenditures	17,511,400	10,735,729	6,775,671	61.31%	38.69%
Contractual Services	14,700,500	3,880,683	10,819,817	26.40%	73.60%
Travel	1,375,000	417,295	957,705	30.35%	69.65%
Commodities	305,000	15,634	289,366	5.13%	94.87%
Printing	341,000	6,944	334,056	2.04%	97.96%
Equipment	455,000	35,032	419,968	7.70%	92.30%
Telecommunications	400,000	-	400,000	0.00%	100.00%
Lump Sums	23,780,300	7,003,563	16,776,737	29.45%	70.55%
<i>Sub-total</i>	58,868,200	22,094,881	36,773,319	37.53%	62.47%
Awards and Grants	1,696,500,000	899,674,051	796,825,949	53.03%	46.97%
Total SBE Federal Department of Education Fund	1,755,368,200	921,768,931	833,599,269	52.51%	47.49%
<u>Charter Schools Revolving Loan Program Fund</u>					
Awards and Grants	20,000	-	20,000	0.00%	100.00%
<u>School Infrastructure Fund</u>					
Personal Services and Related Expenditures	113,000	76,994	36,006	68.14%	31.86%

ILLINOIS STATE BOARD OF EDUCATION
Financial Status Report
July 1, 2008 through March 31, 2009
(Fiscal Year 2009)

	Appropriation Amount	Expenditures to Date	Unexpended Appropriation	Percentage spent YTD	Percentage Unexpended
<i>School Technology Revolving Loan Program Fund</i>					
Awards and Grants	5,000,000	1,912,276	3,087,724	38.25%	61.75%
<i>Temporary Relocation Expenses Revolving Grant Fund</i>					
Awards and Grants	1,400,000	440,859	959,141	31.49%	68.51%
ISBE TOTALS	9,789,158,629	6,644,896,863	3,144,261,766	67.88%	32.12%

ILLINOIS STATE BOARD OF EDUCATION
Combined Financial Status Report
July 1, 2008 through March 31, 2009
(Fiscal Year 2009)

	Appropriation Amount	Expenditures to Date (Direct)	Federal Indirect Cost Recovery Expenditures	Unexpended Appropriation	Percentage spent YTD	Percentage Unexpended
<u>All Funds</u>						
Personal Services and Related Expenditures	42,067,075	27,913,287	1,734,639	12,419,149	66.35%	29.52%
Contractual Services	25,249,193	9,420,108	541,493	15,287,592	37.31%	60.55%
Travel	2,123,994	781,095	30,294	1,312,605	36.77%	61.80%
Commodities	488,781	92,488	24,681	371,612	18.92%	76.03%
Printing	583,200	46,002	-	537,198	7.89%	92.11%
Equipment	704,677	87,782	17,777	599,118	12.46%	85.02%
Telecommunications	995,782	222,026	68,182	705,574	22.30%	70.86%
Operation of Automotive Equipment	20,000	10,696	-	9,304	53.48%	46.52%
Lump Sums	72,974,134	20,532,910	-	52,441,223	28.14%	71.86%
Sub-total	145,206,836	61,523,463	2,417,066	83,683,373	42.37%	57.63%
Awards and Grants	9,643,951,793	6,583,373,400	-	3,060,578,393	68.26%	31.74%
Total All Funds	9,789,158,629	6,642,479,797	2,417,066	3,144,261,766	67.86%	32.12%
<u>General Revenue Fund</u>						
Personal Services and Related Expenditures	17,490,536	13,491,241	-	3,999,295	77.13%	22.87%
Contractual Services	5,857,200	4,099,795	-	1,757,405	70.00%	30.00%
Travel	313,700	183,515	-	130,185	58.50%	41.50%
Commodities	59,100	51,799	-	7,301	87.65%	12.35%
Printing	85,200	23,885	-	61,315	28.03%	71.97%
Equipment	70,900	7,920	-	62,980	11.17%	88.83%
Telecommunications	468,600	222,026	-	246,574	47.38%	52.62%
Operation of Automotive Equipment	20,000	10,696	-	9,304	53.48%	46.52%
Lump Sums	33,502,000	12,349,053	-	21,152,947	36.86%	63.14%
Sub-total	57,867,236	30,439,931	-	27,427,305	52.60%	47.40%
Awards and Grants	2,543,734,893	1,812,106,276	-	731,628,617	71.24%	28.76%
Total General Revenue Fund	2,601,602,129	1,842,546,207	-	759,055,922	70.82%	29.18%
<u>Other State Funds</u>						
Personal Services and Related Expenditures	193,800	131,808	-	61,993	68.01%	31.99%
Lump Sums	18,108,900	3,597,361	-	14,511,539	19.87%	80.13%
Sub-total	18,302,700	3,729,168	-	14,573,532	20.37%	79.63%
Awards and Grants	4,874,216,900	3,519,969,512	-	1,354,247,388	72.22%	27.78%
Total Other State Funds	4,892,519,600	3,523,698,681	-	1,368,820,919	72.02%	27.98%
<u>Federal Funds</u>						
Personal Services and Related Expenditures	22,648,100	14,290,238	-	8,357,862	63.10%	36.90%
Contractual Services	18,850,500	5,320,313	-	13,530,187	28.22%	71.78%
Travel	1,780,000	597,580	-	1,182,420	33.57%	66.43%
Commodities	405,000	40,688	-	364,312	10.05%	89.95%
Printing	498,000	22,118	-	475,882	4.44%	95.56%
Equipment	616,000	79,863	-	536,137	12.96%	87.04%
Telecommunications	459,000	-	-	459,000	0.00%	100.00%
Lump Sums	23,780,300	7,003,563	-	16,776,737	29.45%	70.55%
Sub-total	69,036,900	27,354,363	-	41,682,537	39.62%	60.38%
Awards and Grants	2,226,000,000	1,251,297,612	-	974,702,388	56.21%	43.79%
Total Federal Funds	2,295,036,900	1,278,651,975	-	1,016,384,925	55.71%	44.29%

ILLINOIS STATE BOARD OF EDUCATION
Awards and Grants Expenditures
July 1, 2008 through March 31, 2009
(Fiscal Year 2009)

<u><i>General Revenue Fund</i></u>	Appropriation Amount	Expenditures to Date	Unexpended Appropriation	Percentage spent YTD	Percentage Unexpended
Parental Participation Pilot Project	100,000	95,000	5,000	95.00%	5.00%
Regional Superintendents Initiatives	500,000	408,330	91,670	81.67%	18.33%
Rural Technology Initiatives	4,000,000	-	4,000,000	0.00%	100.00%
Targeted Interventions	4,000,000	1,763,284	2,236,716	44.08%	55.92%
Classroom Cubed	2,000,000	1,434,746	565,254	71.74%	28.26%
Hard to Staff Schools	3,000,000	-	3,000,000	0.00%	100.00%
Regional Superintendent Services-Bus Driver Training	70,000	70,000	-	100.00%	0.00%
Re-enrollment Student Program	4,000,000	3,460,000	540,000	86.50%	13.50%
Response to Intervention	2,000,000	-	2,000,000	0.00%	100.00%
Mentoring and After School Programs	9,700,000	1,062,323	8,637,677	10.95%	89.05%
Chicago Aerospace Initiative	920,000	891,000	29,000	96.85%	3.15%
Homeless Education	3,000,000	70,996	2,929,004	2.37%	97.63%
Adler Planetarium	200,000	-	200,000	0.00%	100.00%
Truant Alternative/Optional Education	20,078,100	17,388,344	2,689,756	86.60%	13.40%
Metro East Consortium/Student Advocacy	217,100	173,680	43,420	80.00%	20.00%
Jobs for Illinois Grads	4,000,000	3,333,334	666,666	83.33%	16.67%
ROE and ISC Operations Reimbursement	6,318,000	5,690,952	627,048	90.08%	9.92%
IL Governmental Student Internship	129,900	95,900	34,000	73.83%	26.17%
Standards, Assessments and Accountability	3,042,700	2,437,269	605,431	80.10%	19.90%
Teachers and Administrators Mentoring Program	13,378,800	4,227,439	9,151,361	31.60%	68.40%
Principal Mentoring Program	1,291,600	-	1,291,600	0.00%	100.00%
Chicago Principals and Administrators	1,000,000	-	1,000,000	0.00%	100.00%
Minority Transition Program Reimbursement	578,800	468,400	110,400	80.93%	19.07%
Philip Rock Center Reimbursement	3,577,800	3,227,800	350,000	90.22%	9.78%
Educational Materials Unit	2,121,000	1,700,000	421,000	80.15%	19.85%
Gifted Education	7,000,000	-	7,000,000	0.00%	100.00%
Technology for Success	2,719,700	2,157,762	561,938	79.34%	20.66%
Special Ed - Private Facility Tuition	151,600,000	131,929,316	19,670,684	87.02%	12.98%
Special Ed - Extraordinary	331,051,100	269,992,184	61,058,916	81.56%	18.44%
Special Ed - Personnel	426,100,000	339,921,254	86,178,746	79.77%	20.23%
Special Ed - Orphanage	101,800,000	80,582,509	21,217,491	79.16%	20.84%
Bilingual Education - Chicago	41,500,000	41,500,000	-	100.00%	0.00%
Bilingual Education - Downstate	34,152,000	15,226,427	18,925,573	44.58%	55.42%
Transportation - Regular/Vocational	339,500,000	250,972,639	88,527,361	73.92%	26.08%
Transportation - Special Education	383,300,000	199,220,175	184,079,825	51.97%	48.03%
State Free Lunch and Breakfast	26,300,000	21,506,170	4,793,830	81.77%	18.23%

ILLINOIS STATE BOARD OF EDUCATION
Awards and Grants Expenditures
July 1, 2008 through March 31, 2009
(Fiscal Year 2009)

<i><u>General Revenue Fund, continued</u></i>	Appropriation Amount	Expenditures to Date	Unexpended Appropriation	Percentage spent YTD	Percentage Unexpended
Illinois Breakfast Incentive Reimbursement	723,500	153,800	569,700	21.26%	78.74%
Textbook Loan Program	42,826,500	-	42,826,500	0.00%	100.00%
Textbook Loan Program Reappropriation	39,636,500	39,425,966	210,534	99.47%	0.53%
Advanced Placement Classes	1,635,300	1,212,144	423,156	74.12%	25.88%
Grow Your Own Teachers	3,031,200	1,999,399	1,031,801	65.96%	34.04%
Parent/Guardian Transportation Reimbursement	11,954,700	11,935,863	18,837	99.84%	0.16%
State Charter Schools	3,421,500	2,567,042	854,458	75.03%	24.97%
Tax Equivalent Grants	222,600	222,600	-	100.00%	0.00%
GRF Transfer/Temporary Relocation Rev. Grant Fund	100,000	100,000	-	100.00%	0.00%
Recording for Blind & Dyslexic Grant	1,218,800	1,218,000	800	99.93%	0.07%
Vocational Ed. - Agriculture Education	3,381,200	2,533,061	848,139	74.92%	25.08%
Teach for America	450,000	337,500	112,500	75.00%	25.00%
Illinois Economic Education Program	250,000	205,167	44,833	82.07%	17.93%
Class Size Reduction Pilot Project	8,000,000	4,027,060	3,972,940	50.34%	49.66%
Autism Training & Tech Assistance	100,000	88,890	11,110	88.89%	11.11%
Children's Mental Health Partnership	2,496,800	1,403,803	1,092,997	56.22%	43.78%
Healthy Kids/Healthy Minds/Expanded Vision	3,000,000	2,250,000	750,000	75.00%	25.00%
Arts and Foreign Language	4,000,000	2,145,820	1,854,180	53.65%	46.35%
Grants for School Transportation	1,200,000	981,819	218,181	81.82%	18.18%
Healthy Kids/Healthy Minds/Expanded Vision	1,000,000	-	1,000,000	0.00%	100.00%
Alternative Education	18,535,500	15,256,817	3,278,683	82.31%	17.69%
Early Childhood Block Grant	376,324,500	284,771,014	91,553,486	75.67%	24.33%
ROE Services - Supervisory Expenses	102,000	102,000	-	100.00%	0.00%
Orphanage Tuition	11,600,000	8,724,360	2,875,640	75.21%	24.79%
Reorganization Incentive	7,850,000	5,475,319	2,374,681	69.75%	30.25%
Special Education - Summer School	11,000,000	10,854,376	145,624	98.68%	1.32%
Transitional Assistance	36,763,600	-	36,763,600	0.00%	100.00%
Fast Growth Schools	7,500,000	7,500,000	0	100.00%	0.00%
After School Matters	500,000	-	500,000	0.00%	100.00%
Museum of Science and Industry	200,000	-	200,000	0.00%	100.00%
Total General Revenue Fund	2,533,270,800	1,806,499,052	726,771,748	71.31%	28.69%

ILLINOIS STATE BOARD OF EDUCATION
Awards and Grants Expenditures
July 1, 2008 through March 31, 2009
(Fiscal Year 2009)

	Appropriation Amount	Expenditures to Date	Unexpended Appropriation	Percentage spent YTD	Percentage Unexpended
<u>Education Assistance Fund</u>					
Teacher of the Year Program	135,000	77,140	57,860	57.14%	42.86%
Summer Bridges	22,238,100	17,153,038	5,085,062	77.13%	22.87%
Teacher Education	11,485,000	-	11,485,000	0.00%	100.00%
General State Aid	1,123,119,900	549,095,146	574,024,754	48.89%	51.11%
Career and Technical Education	38,562,100	33,689,645	4,872,455	87.36%	12.64%
School Safety & Educational Improvement Block Grant	74,841,000	37,428,053	37,412,947	50.01%	49.99%
Reading Improvement Block Grant	76,139,800	48,808,337	27,331,463	64.10%	35.90%
General State Aid - Hold Harmless	26,106,400	26,106,400	0	100.00%	0.00%
Total Education Assistance Fund	1,372,627,300	712,357,759	660,269,541	51.90%	48.10%
<u>Common School Fund</u>					
Regional Superintendent Salaries	9,100,000	6,753,389	2,346,611	74.21%	25.79%
General State Aid	3,467,140,000	2,785,058,973	682,081,027	80.33%	19.67%
Total Common School Fund	3,476,240,000	2,791,812,362	684,427,638	80.31%	19.69%
<u>Drivers Education Fund</u>					
Driver Education Grants	17,929,600	13,446,256	4,483,344	74.99%	25.01%
Total Drivers Education Fund	17,929,600	13,446,256	4,483,344	74.99%	25.01%
<u>School Dist. Emergency Financial Asst. Fund</u>					
School District Emergency Financial Assistance	1,000,000	-	1,000,000	0.00%	100.00%
Total School Dist. Emergency Fin. Asst. Fund	1,000,000	-	1,000,000	0.00%	100.00%
<u>SBE Federal Department of Agriculture Fund</u>					
Federal Nutrition Programs	525,000,000	351,186,253	173,813,747	66.89%	33.11%
Total SBE Federal Department of Agriculture Fund	525,000,000	351,186,253	173,813,747	66.89%	33.11%

ILLINOIS STATE BOARD OF EDUCATION
Awards and Grants Expenditures
July 1, 2008 through March 31, 2009
(Fiscal Year 2009)

	Appropriation Amount	Expenditures to Date	Unexpended Appropriation	Percentage spent YTD	Percentage Unexpended
<u>SBE Federal Agency Services Fund</u>					
Refugee Services	2,000,000	-	2,000,000	0.00%	100.00%
Learn and Serve America	2,500,000	437,308	2,062,692	17.49%	82.51%
Total SBE Federal Agency Services Fund	4,500,000	437,308	4,062,692	9.72%	90.28%
<u>SBE Federal Department of Education Fund</u>					
Title VI Rural and Low Income Students	1,500,000	462,392	1,037,608	30.83%	69.17%
Title III - English Language Acquisition	40,000,000	7,919,843	32,080,157	19.80%	80.20%
Integration of Mental Health	25,819	25,819	-	100.00%	0.00%
ONPAR	800,000	129,690	670,310	16.21%	83.79%
Enhancing Education Through Technology	20,000,000	7,572,286	12,427,714	37.86%	62.14%
Charter Schools	6,000,000	452,420	5,547,580	7.54%	92.46%
Advanced Placement Fee	2,000,000	746,783	1,253,217	37.34%	62.66%
Title I - Basic	675,000,000	376,746,260	298,253,740	55.81%	44.19%
Title I - Reading First	60,000,000	19,379,369	40,620,631	32.30%	67.70%
Title IV - Safe & Drug Free Schools	15,000,000	4,968,943	10,031,057	33.13%	66.87%
Title IV - 21st Century/Community Service	55,000,000	20,305,044	34,694,956	36.92%	63.08%
Title II - Teacher Quality	135,000,000	52,911,082	82,088,918	39.19%	60.81%
Title II - Transition to Teaching	1,000,000	432,077	567,923	43.21%	56.79%
Title II - Math/Science Partnerships	9,000,000	1,887,646	7,112,354	20.97%	79.03%
Title X - McKinney Homeless	3,250,000	2,044,476	1,205,524	62.91%	37.09%
IDEA - Preschool	25,000,000	11,902,409	13,097,591	47.61%	52.39%
IDEA - Improvement	2,500,000	855,209	1,644,791	34.21%	65.79%
IDEA	570,000,000	354,212,867	215,787,133	62.14%	37.86%
IDEA - Model Outreach	400,000	-	400,000	0.00%	100.00%
IDEA - Deaf/Blind	450,000	212,042	237,958	47.12%	52.88%
Career and Technical Education - Basic Perkins	55,000,000	33,271,489	21,728,511	60.49%	39.51%
Career and Technical Education - Tech Prep	5,000,000	2,931,474	2,068,527	58.63%	41.37%
Special Federal Congressional Initiatives	4,995,500	39,656	4,955,844	0.79%	99.21%
Title V - Innovative Programs	8,000,000	117,749	7,882,251	1.47%	98.53%
Total SBE Federal Department of Education Fund	1,694,921,319	899,527,025	795,394,294	53.07%	46.93%

ILLINOIS STATE BOARD OF EDUCATION
Awards and Grants Expenditures
July 1, 2008 through March 31, 2009
(Fiscal Year 2009)

	Appropriation Amount	Expenditures to Date	Unexpended Appropriation	Percentage spent YTD	Percentage Unexpended
<u>Charter Schools Revolving Loan Program Fund</u>					
Charter Schools Revolving Loans	20,000	-	20,000	0.00%	100.00%
Total Charter Schools Rev. Loan Program Fund	20,000	-	20,000	0.00%	100.00%
<u>School Technology Revolving Loan Program Fund</u>					
School Technology Revolving Loans	5,000,000	1,912,276	3,087,724	38.25%	61.75%
Total School Technology Rev. Loan Program Fund	5,000,000	1,912,276	3,087,724	38.25%	61.75%
<u>Temporary Relocation Expenses Revolving Grant Fund</u>					
Temporary Relocation Revolving Loans/Grants	1,400,000	440,859	959,141	31.49%	68.51%
Total Temporary Relocation Exp. Rev. Grant Fund	1,400,000	440,859	959,141	31.49%	68.51%
 TOTAL AWARDS AND GRANTS - ALL FUNDS	 9,631,909,019	 6,577,619,151	 3,054,289,868	 68.29%	 31.71%

ILLINOIS STATE BOARD OF EDUCATION
Comparative Statement of Expenditures to Date (March 31)
Fiscal Years 2009 and 2008

	FY09				FY08			
	Appropriation Amount	Expenditures to Date (Direct)	Federal Indirect Cost Reovery Expenditures	Percentage to Date	Appropriation Amount	Expenditures to Date (Direct)	Federal Indirect Cost Reovery Expenditures	Percentage to Date
All Funds								
Personal Services and Related Expenditures	42,067,075	27,913,287	1,734,639	70.48%	41,298,267	27,769,078	1,247,972	67.24%
Contractual Services	25,249,193	9,420,108	541,493	39.45%	23,033,312	9,065,676	457,512	39.36%
Travel	2,123,994	781,095	30,294	38.20%	2,140,668	736,842	11,968	34.42%
Commodities	488,781	92,488	24,681	23.97%	463,129	80,244	15,029	17.33%
Printing	583,200	46,002	-	7.89%	531,200	90,623	-	17.06%
Equipment	704,677	87,782	17,777	14.98%	961,288	296,911	228,188	30.89%
Telecommunications	995,782	222,026	68,182	29.14%	913,245	249,530	20,645	27.32%
Operation of Automotive Equipment	20,000	10,696	-	53.48%	22,000	13,276	-	60.34%
Lump Sums	72,974,134	20,532,910	-	28.14%	58,181,250	20,513,167	-	35.26%
Sub-total	145,206,836	59,106,396	2,417,066	42.37%	127,544,359	58,815,346	1,981,314	46.11%
Awards and Grants	9,643,951,793	6,583,373,400	-	68.26%	9,188,763,363	5,751,376,229	-	62.59%
Total All Funds	9,789,158,629	6,642,479,797	2,417,066	67.88%	9,316,307,722	5,810,191,575	1,981,314	62.37%
General Revenue Fund								
Personal Services and Related Expenditures	17,490,536	13,491,241	-	77.13%	16,770,500	13,075,873	-	77.97%
Contractual Services	5,857,200	4,099,795	-	70.00%	5,821,000	3,420,885	-	58.77%
Travel	313,700	183,515	-	58.50%	348,700	219,636	-	62.99%
Commodities	59,100	51,799	-	87.65%	59,100	56,747	-	96.02%
Printing	85,200	23,885	-	28.03%	83,200	33,781	-	40.60%
Equipment	70,900	7,920	-	11.17%	107,100	58,867	-	54.96%
Telecommunications	468,600	222,026	-	47.38%	433,600	203,009	-	46.82%
Operation of Automotive Equipment	20,000	10,696	-	53.48%	22,000	13,276	-	60.34%
Lump Sums	33,502,000	12,349,053	-	36.86%	18,474,364	11,060,092	-	59.87%
Sub-total	57,867,236	30,439,931	-	52.60%	42,119,564	28,142,166	-	66.81%
Awards and Grants	2,543,734,893	1,812,106,276	-	71.24%	2,351,678,880	1,622,710,461	-	69.00%
Total General Revenue Fund	2,601,602,129	1,842,546,207	-	70.82%	2,393,798,444	1,650,852,627	-	68.96%
Other State Funds								
Personal Services and Related Expenditures	193,800	131,808	-	68.01%	1,273,400	869,769	-	68.30%
Lump Sums	18,108,900	3,597,361	-	19.87%	17,907,900	3,396,834	-	18.97%
Sub-total	18,302,700	3,729,168	-	20.37%	19,181,300	4,266,603	-	22.24%
Awards and Grants	4,874,216,900	3,519,969,512	-	72.22%	4,737,654,483	3,060,801,422	-	64.61%
Total Other State Funds	4,892,519,600	3,523,698,681	-	72.02%	4,756,835,783	3,065,068,025	-	64.44%
Federal Funds								
Personal Services and Related Expenditures	22,648,100	14,290,238	-	63.10%	22,006,395	13,823,435	-	62.82%
Contractual Services	18,850,500	5,320,313	-	28.22%	16,754,800	5,644,792	-	33.69%
Travel	1,780,000	597,580	-	33.57%	1,780,000	517,206	-	29.06%
Commodities	405,000	40,688	-	10.05%	389,000	23,497	-	6.04%
Printing	498,000	22,118	-	4.44%	448,000	56,841	-	12.69%
Equipment	616,000	79,863	-	12.96%	626,000	238,044	-	38.03%
Telecommunications	459,000	-	-	0.00%	459,000	46,521	-	10.14%
Lump Sums	23,780,300	7,003,563	-	29.45%	23,780,300	8,037,555	-	33.80%
Sub-total	69,036,900	27,354,363	-	39.62%	66,243,495	28,387,891	-	42.85%
Awards and Grants	2,226,000,000	1,251,297,612	-	56.21%	2,099,430,000	1,067,864,347	-	50.86%
Total Federal Funds	2,295,036,900	1,278,651,975	-	55.71%	2,165,673,495	1,096,252,238	-	50.62%

**ILLINOIS STATE BOARD OF EDUCATION
FINANCIAL STATUS REPORT - 07/01/08 THROUGH 3/1/09**

	<u>Approp Amount</u>	<u>Expended Year to Date</u>	<u>% Spent Year to Date</u>	<u>March Expenditures</u>	<u>Description</u>
Personal Services and Related	45,989.9	31,458.1	68.4%	3,620.5	Salaries & Benefits
Contractual Services	105,544.7	33,930.9	32.1%	10,181.1	Agency Contracts (see below); Non-Employee Travel; Conferences; Registration Fees
Travel	2,290.4	863.4	37.7%	123.1	Staff Travel
Commodities	742.9	120.5	16.2%	12.1	Supplies; Books
Printing	918.3	48.5	5.3%	1.7	Agency Printing
Equipment	886.8	142.0	16.0%	40.6	Computers; Printers; Furniture
Telecommunications	1,145.9	292.2	25.5%	33.4	Telecommunications Expenses
Auto Operations	20.0	10.7	53.5%	1.6	Operation of Agency Autos
Prompt Payment Act	437.4	420.5	96.1%	84.9	Prompt Payment
Refunds	5.7	5.7	100.0%	0.0	Refunds
Temp. Relocation Revolving Fund	100.0	100.0	100.0%	0.0	Interfund Cash Transfer
Grants	9,631,076.6	6,577,504.2	68.3%	1,069,672.5	See Detail Below

	<u>Funded Amount</u>	<u>Expended Year to Date</u>	<u>% Spent Year to Date</u>	<u>March Expenditures</u>	<u>Description</u>
Agency Contracts Breakdown:					
<u>State Superintendent</u>					
John Perkins					School District Liaison
GRF	79.0	59.0	74.7%	7.4	
University of Illinois					Services of Susie Morrison to assist with Board priorities; serve on senior leadership team, etc.
GRF	133.1	88.7	66.6%	11.1	
Illinois State University					Gates Foundation to align IL Learning Standards and Assessments with college work readiness standards
Other State	85.0	0.0	0.0%	0.0	
<u>Human Resources</u>					
K & L Gates LLP (formerly Bell, Boyd and Lloyd)					Arbitration matters
GRF	75.0	40.3	53.7%	1.9	
Other State	75.0	0.0	0.0%	0.0	
<u>Administrative Services</u>					
Xerox Corp					Copier Maintenance Repairs
GRF	85.0	85.0	100.0%	0.0	
Other State	100.0	40.6	40.6%	15.1	
Alzina					Building lease in Springfield
GRF	1,479.4	1,479.4	100.0%	0.0	
Other State	357.8	357.8	100.0%	0.0	
Federal	851.9	851.9	100.0%	0.0	
Facilities Management					Rent for Chicago Office, Thompson Center
GRF	89.0	88.9	99.9%	0.0	
Other State	13.4	0.0	0.0%	0.0	
Federal	161.3	86.8	53.8%	22.0	

	<u>Funded Amount</u>	<u>Expended Year to Date</u>	<u>% Spent Year to Date</u>	<u>March Expenditures</u>	<u>Description</u>
<u>General Counsel/Legal</u>					
42 Impartial Hearing Officers					Teacher Dismissal Hearing Officers
GRF	168.0	11.2	6.7%	1.2	
Franczek, Sullivan PC					Attorney General's Office appointed Res Vazquez to continue as Legal Counsel for the ongoing implementation and monitoring of the Corey H. consent decree
GRF	120.0	85.5	71.3%	8.3	
Kubiesa, Spiroff, Gosselar, Acker & DeBlasio, P.C.					Assist in recovery of Grant funds from West Harvey-Dixmoor SD #147 and represent ISBE with other cases as assigned.
GRF	50.0	49.9	99.8%	0.0	
Other State	50.0	39.3	78.6%	0.2	
Shefsky & Froelich LTD					Prosecution of Educator misconduct cases and any other cases ISBE may request
GRF	100.0	26.8	26.8%	11.3	
<u>Data Systems</u>					
IBM					Development of Statewide Student Information System
GRF	1,910.5	1,230.0	64.4%	80.0	
Federal	1,459.5	1,070.0	73.3%	495.0	
Utilistar					Data analysis and reporting for Supplemental Education Services
Federal	50.0	20.7	41.4%	0.0	
Ashbaugh & Associates					Programmer for CERTS System to merge into TCIS/OTIS
Other State	71.9	65.5	91.1%	0.0	
Ashbaugh & Associates					Two programmers for Child Nutrition System - MY08211
Federal	174.9	131.5	75.2%	19.7	
Ashbaugh & Associates					Two programmers for Child Nutrition System/ACES - 187
Federal	307.5	172.5	56.1%	21.8	
Capitol Strategies					Programmer for Child Nutrition/ ACES - MY07211
Federal	163.6	99.9	61.1%	11.8	
Capitol Strategies					Programmer for Entity System - MY07212
GRF	150.8	87.2	57.8%	10.6	
Capitol Strategies					Programmer for Child Nutrition System - MY08212
Federal	291.2	203.8	70.0%	23.3	
Ashbaugh & Associates					Programmer for Teacher Certification Information System and Educator Certification System
Other State	74.4	21.4	28.8%	9.9	
<u>Technology Support</u>					
Dell Marketing LP					CMS master lease agreement - 5 year lease of Storage Area Network and server products and components including Pro-Support Warranty
GRF	135.4	0.0	0.0%	0.0	
Other State	109.6	0.0	0.0%	0.0	
Federal	78.2	0.0	0.0%	0.0	
<u>Curriculum & Instruction</u>					
IL Caucus for Adolescent Health					HIV Prevention Education
Federal	80.0	26.8	33.5%	26.8	
Children's Memorial Hospital					2009 Youth Risk Behavior Survey
Federal	80.0	39.5	49.4%	39.5	
Linda Rakers					Budget manager for four federal programs
Federal	60.0	16.5	27.5%	1.4	
MGT of America, Inc.					Reading First Statewide Evaluation
Federal	271.1	180.8	66.7%	22.6	
The Center: Resources for Teaching and					Learn and Serve America Program
Federal	111.0	68.4	61.6%	36.6	
Elizabeth Oyer					Evaluation and Research of Illinois Math & Science Partnerships Program
Federal	68.8	34.4	50.0%	0.0	
Sangamon County ROE					Statewide Education Initiatives (Lieberman)
Federal	53.0	26.5	50.0%	0.0	
IL Math & Science Academy					Act as fiscal agent for ISBE for the Illinois Virtual High School (IVHS) Program
GRF	1,250.0	1,250.0	100.0%	255.0	

	<u>Funded Amount</u>	<u>Expended Year to Date</u>	<u>% Spent Year to Date</u>	<u>March Expenditures</u>	<u>Description</u>
<u>Early Childhood</u>					
Henderson Mercer Warren -ROE 27					Third party monitoring of Early Childhood Block Grant Programs
GRF	700.0	420.0	60.0%	0.0	
Erikson Institute					Early Childhood Social and Emotional Consultation
GRF	1,120.0	912.5	81.5%	0.0	
Erikson Institute					Early Childhood Evaluation
GRF	1,120.0	620.0	55.4%	0.0	
<u>English Language Learning</u>					
Illinois Migrant Council					Support and technical assistance to the Migrant Education Program - contract ends 8/31/08
Federal	99.8	88.4	88.6%	0.0	
Illinois Migrant Council					Support & technical assistance to the Migrant Education Program - contract began 9/1/08
Federal	354.2	202.5	57.2%	74.2	
Illinois Department of Human Services					Welcoming Centers
Federal	50.0	37.5	75.0%	37.5	
<u>Special Education Services</u>					
15 Hearing Officers					Impartial Hearing Officers in the local-level due process hearing/Section 14-8.02 of the School Code
Federal	445.0	315.0	70.8%	46.3	
9 Mediation Agreements					IDEA mandates ISBE to offer mediation services
Federal	97.7	63.1	64.6%	9.8	
Hupp Information Technology					Customize the Special Ed Data Systems and add critical indicators for the mediation process
Federal	331.4	177.4	53.5%	32.9	
ROE # 20					Harrisburg Project - Manage software by special education districts and co-ops
Federal	735.0	568.5	77.3%	55.5	
3 Corey H. CPS Monitors					Corey H. Settlement - CPS Monitors
Federal	60.0	42.2	70.3%	8.6	
Gail Imobersteg					Evaluation of Hearing Officers
Federal	50.0	33.3	66.6%	4.2	
Measurement Inc.					Parent Surveys - two cycles of surveys this fiscal year
Federal	61.0	20.3	33.3%	0.0	
Loyola University					Assist in implementation of evaluation of special education programs
GRF	78.6	34.0	43.3%	17.8	
Federal	40.6	40.6	100.0%	0.0	
Sangamon County ROE					Facilitate and provide technical assistance through subcontractor, Dr. Michael Parrish, for the Special Education Funding Task Force regarding special education funding needs
GRF	74.9	15.0	20.0%	15.0	
<u>Grants & Programs</u>					
Education Innovations					Evaluation Model for SES Providers
Federal	82.4	0.0	0.0%	0.0	
Northern Illinois University					Comprehensive external evaluation of the 21st Century Program
Federal	165.7	66.1	39.9%	12.3	
Learning Point Associates					Statewide technical assistance and monitoring for the 21st Century Program
Federal	500.0	124.9	25.0%	0.0	
Measurement, Inc.					Evaluation Services for RESPROS
Federal	89.9	66.0	73.4%	44.0	
Academic Development, Inc.					Technical assistance to schools/districts in developing evaluations for the content and effectiveness of the parental involvement policy activities and programs for improving the academic quality of schools through the spread of internet technology.
Federal	84.3	41.1	48.8%	8.2	

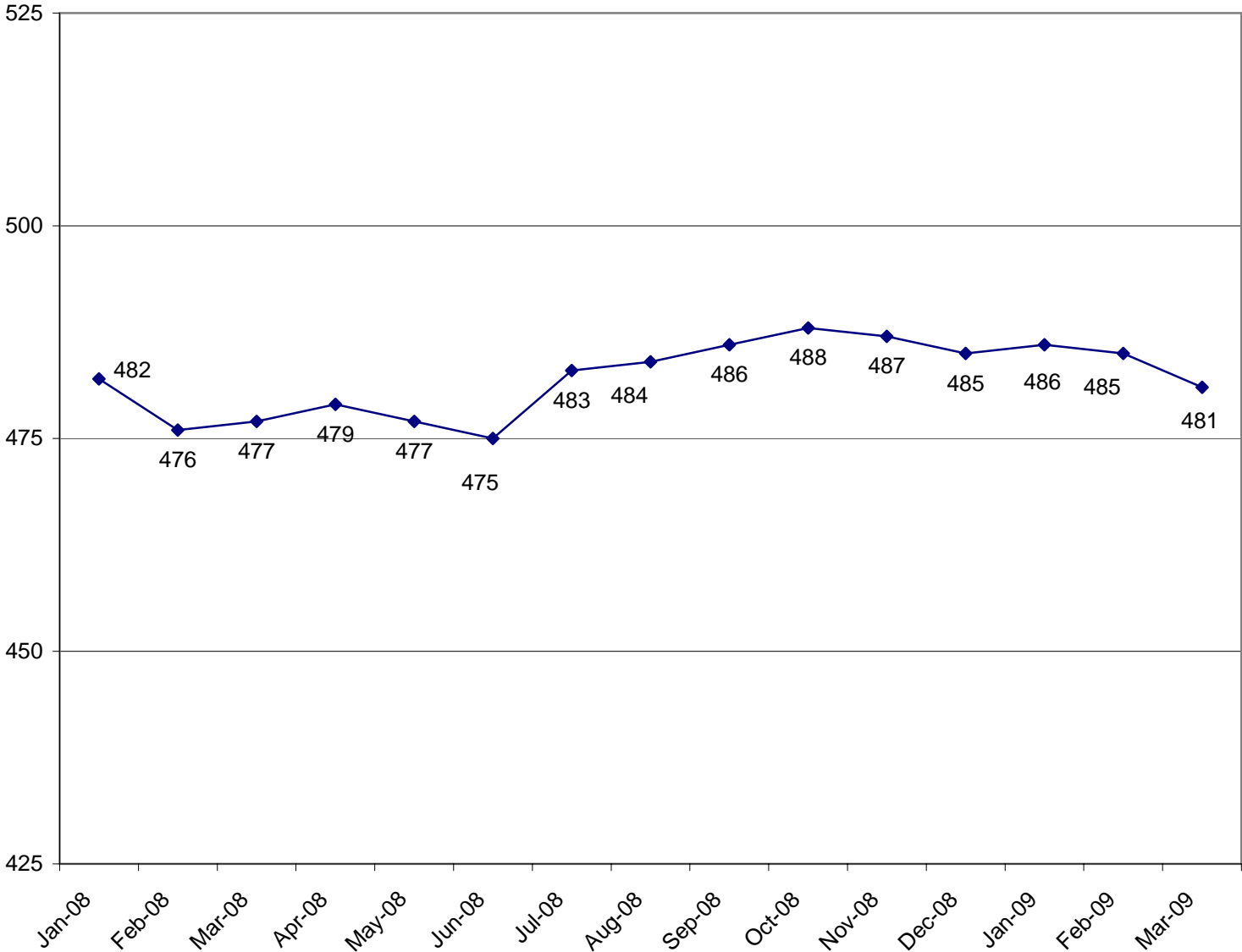
	<u>Funded Amount</u>	<u>Expended Year to Date</u>	<u>% Spent Year to Date</u>	<u>March Expenditures</u>	<u>Description</u>
<u>Assessment</u>					
Metri Tech, Inc.					Develop, administer, retrieve, analyze, and score the Consumer Ed Proficiency Test
GRF	117.5	68.6	58.4%	0.0	
Measurement Inc.					Writing component of ISAT - contract ended 9/2008
GRF	200.9	200.9	100.0%	200.9	
NCS Pearson (Harcourt)					Formerly Harcourt Contract - Enhanced Statewide Student Assessment System - MY05647
GRF	5,002.4	3,451.0	69.0%	0.0	
University of Illinois					Assessment Evaluation
GRF	125.0	125.0	100.0%	0.0	
Federal	125.0	0.0	0.0%	0.0	
NCS Pearson, Inc.					IAA Test (MY066410)
Federal	2,896.7	1,659.4	57.3%	0.0	
Harte-Hanks					Third Party Oversight
GRF	150.0	147.5	98.3%	13.9	
Federal	100.0	47.0	47.0%	13.9	
Wisconsin University - WIDA Consortium					Title III Requirements for the ACCESS test (bilingual). Validated through comparative studies by WIDA Consortia
GRF	4,465.3	2,648.5	59.3%	2,648.5	
NCS Pearson, Inc.					Implement ISAT Test and State Assessment Accountability Requirements - MY07645
GRF	4,534.0	4,534.0	100.0%	350.3	
Federal	8,763.6	5,177.9	59.1%	2,040.1	
American College Testing					ACT Test - College Entrance Exam
GRF	5,121.9	0.0	0.0%	0.0	
Federal	4,110.0	0.0	0.0%	0.0	
<u>Educator Certification</u>					
Target Area Development Corp					Grow Your Own Initiative
GRF	350.0	233.3	66.7%	29.2	
Philliber Research Associates					Evaluation of Grow Your Own Initiative
GRF	118.2	76.0	64.3%	9.5	
<u>Educator and School Development</u>					
Illinois Principals Association					New Principals Mentoring Program
Other State	1,804.2	600.0	33.3%	0.0	
4 Hearing Officers					Certification revocation hearing officers
Other State	133.7	6.2	4.6%	6.0	
Iroquois-Kankakee County ROE					National Board of Professional Teaching Standards to serve schools outside City of Chicago - Component 2
Federal	239.0	139.0	58.2%	69.5	
Illinois State University					National Board of Professional Teaching
Federal	680.4	110.0	16.2%	0.0	
University of Illinois					New Illinois Teacher Collaborative
GRF	520.6	310.6	59.7%	0.0	
<u>Standards & Assessments</u>					
Northern Illinois University					A "live data" website for an Illinois Interactive Report Card
GRF	539.1	486.0	90.2%	0.0	
Federal	458.7	0.0	0.0%	0.0	
<u>Fiscal and Procurement</u>					
Acculngua International					Translation of documents from English to other languages
GRF	51.5	8.0	15.5%	0.0	

	<u>Funded Amount</u>	<u>Expended Year to Date</u>	<u>% Spent Year to Date</u>	<u>March Expenditures</u>	<u>Description</u>
Federal	65.0	21.9	33.7%	18.7	
Workforce Services (Jill Bishop)					Translation of documents from English to other languages
GRF	11.0	0.0	0.0%	0.0	
Federal	82.1	72.7	88.6%	72.7	
<u>Funding & Disbursements</u>					
MTW Solutions, LLC					Develop mechanism to extract data from e-Grants System
GRF	30.7	2.9	9.4%	0.0	
Federal	19.3	3.0	15.5%	0.0	
<u>Nutrition Programs</u>					
Southern Illinois University					Evaluation and reviews for School Meals Initiative (SMI)
Federal	195.5	109.7	56.1%	28.7	
Legal Resolve, Inc.					Administrative Hearing Officer for Child Care Food Program
Federal	100.0	34.7	34.7%	0.0	
Department of Public Health					Summer food inspections
Federal	75.0	75.0	100.0%	0.0	
Grants Breakdown:					
General State Aid	4,616,366.3	3,360,260.5	72.8%	415,770.0	Formula
Title I - Low Income	675,000.0	376,746.3	55.8%	104,817.4	Formula
IDEA	570,000.0	354,220.7	62.1%	38,322.3	Formula
Child Nutrition	525,000.0	351,186.3	66.9%	52,409.4	Formula - Reimbursement
Spec Ed Personnel	426,100.0	339,921.3	79.8%	86,178.7	Formula
Transportation Spec Ed	383,300.0	199,220.2	52.0%	66,406.7	Formula
Early Childhood Block	375,789.5	284,771.0	75.8%	39,047.3	Block grant for Pre-K, parent training and prevention initiative
Transportation Reg/Voc	339,500.0	250,972.6	73.9%	78,226.0	Formula
Spec Ed Extraordinary	331,051.1	269,992.2	81.6%	98,641.4	Mandated Categorical
Spec Ed Private Facility Tuition	151,600.0	131,929.3	87.0%	19,670.7	Formula
Title II - Quality Teachers	135,000.0	52,911.1	39.2%	15,112.6	Formula
Spec Ed Orphanage	101,800.0	80,582.5	79.2%	10,571.1	Formula
Reading Imp. Block Grant	76,139.8	48,808.3	64.1%	306.1	Formula
ADA Sch. Safety and Ed. Bl.	74,841.0	37,428.1	50.0%	0.0	Formula
Title I - Reading First	60,000.0	19,379.4	32.3%	1,399.2	Competitive and formula grants
Voc Ed - Federal	55,000.0	33,350.4	60.6%	2,848.4	Formula and Competitive - to improve student academic and career skills
Title IV - 21st Century	55,000.0	20,305.0	36.9%	2,536.8	Competitive
Textbook Program	42,826.5	0.0	0.0%	0.0	Payment for textbooks purchased during year
Bilingual Education - Chicago	41,500.0	41,500.0	100.0%	0.0	Chicago Block Grant
Title III - English Language Acq	40,000.0	7,919.8	19.8%	2,119.7	Grant
Textbook Loan - Reappropriation	39,636.5	39,425.0	99.5%	931.5	Payment for textbooks purchased during previous year
Vocational Education - State	38,562.1	33,689.6	87.4%	3,454.8	Formula
Transition Assistance	36,763.6	0.0	0.0%	0.0	Formula
Bilingual Education - Downstate	34,152.0	15,226.4	44.6%	270.3	Mandated Categorical
State Free Lunch and Breakfast	26,300.0	21,506.2	81.8%	1,340.1	Mandated Categorical - Reimbursement
Preschool - Spec Ed	25,000.0	11,902.4	47.6%	1,478.9	Formula - special education, 3-5 year-olds
Summer Bridges	22,238.1	17,153.0	77.1%	258.6	Grants to districts (based on ISAT reading scores)
Truant/Dropout/Optional Education	20,078.1	17,388.3	86.6%	1,353.5	Competitive - at-risk students/dropout prevention
Technology Literacy	20,000.0	7,572.3	37.9%	914.2	Competitive and non-competitive grants to school districts
Alternative Ed/Reg Safe Schools	18,535.5	15,256.8	82.3%	4,209.9	Formula
Driver Education	17,929.6	13,446.3	75.0%	4,483.1	Reimbursement
Title IV - Safe and Drug Free	15,000.0	4,968.9	33.1%	743.1	Formula
Teachers/Admin. Mentoring	13,378.8	4,126.8	30.8%	777.2	Grants
Parent/Guardian Transportation	11,954.7	11,935.9	99.8%	0.0	Formula based on appropriation level divided by eligible students
Orphanage Tuition	11,600.0	8,724.4	75.2%	2,358.9	Reimbursement to school districts for children residing in orphanages
Nat'l Board Certification	11,485.0	0.0	0.0%	0.0	Grants
Spec Ed Summer School	11,000.0	10,854.4	98.7%	0.0	Formula - Special ed students enrolled in summer sessions
After School Mentoring	9,700.0	1,062.3	11.0%	245.2	Grants

	<u>Funded Amount</u>	<u>Expended Year to Date</u>	<u>% Spent Year to Date</u>	<u>March Expenditures</u>	<u>Description</u>
ROE Salaries	9,100.0	6,753.4	74.2%	750.5	Salaries for ROE's
Title II Math/Science Partnerships	9,000.0	1,887.6	21.0%	213.5	Formula
Title V - Innovative Programs	8,000.0	117.7	1.5%	30.8	Formula
Class Size Reduction Pilot	8,000.0	4,027.1	50.3%	434.6	Grants for K-3
Reorganization Incentive	7,850.0	5,475.3	69.7%	0.0	Grants to districts to encourage reorganization through consolidation/annexation
Fast Growth Grants	7,500.0	7,500.0	100.0%	0.0	Grants
Gifted Education	7,000.0	0.0	0.0%	0.0	Grants
ROE School Services	6,318.0	5,691.0	90.1%	429.6	Formula - ROE Operations
Charter Schools - Federal	6,000.0	452.4	7.5%	203.2	Competitive
Voc Ed - Federal Tech Prep	5,000.0	2,931.5	58.6%	80.2	Grants - assists students in achieving learning/occupational skills standards
School Tech. Rev. Loan	5,000.0	1,912.3	38.2%	864.3	Loans to schools to implement technology
Spec. Congressional Initiatives	4,865.5	39.7	0.8%	5.0	Grants
Targeted Interventions	4,000.0	1,763.3	44.1%	377.1	Grants
Rural Tech Initiatives	4,000.0	0.0	0.0%	0.0	Grants
Re-Enrolling Student Program	4,000.0	3,460.0	0.0%	700.0	Grant to Alternative Schools Network
Jobs for IL Graduates	4,000.0	3,333.3	83.3%	333.3	Grants to formula reimbursement, work-based learning, jobs for IL graduates
Arts & Foreign Language	4,000.0	2,145.8	53.6%	686.8	Grants
Philip Rock Center	3,577.8	3,227.8	90.2%	600.0	Targeted Initiative
State Charter Schools	3,421.5	2,567.0	75.0%	855.4	Grants - Start-up funds
Agriculture Education	3,381.2	2,533.1	74.9%	0.0	Grants to school districts
McKinney Homeless Ed	3,250.0	2,044.5	62.9%	177.0	Competitive grants to school districts
Standards Assessment & Acct	3,042.7	2,437.3	80.1%	776.3	Grants for K-6 Arts, Learn Improve, Learning Standards, Student/Teacher Assessment
Grow Your Own Teachers	3,030.3	1,999.4	66.0%	413.5	Grants
Homeless Education State	3,000.0	71.0	2.4%	71.0	Grants
Healthy Kids/Minds/Exp Vision	3,000.0	2,250.0	75.0%	750.0	Grants
Hard to Staff Schools	3,000.0	0.0	0.0%	0.0	Grants
Technology for Success -State	2,719.7	2,157.7	79.3%	163.5	Grants
Learn & Serve America	2,500.0	437.3	17.5%	60.5	Competitive grants
IDEA Part D	2,500.0	855.2	34.2%	0.0	Reimbursement
Children's Mental Health Partner	2,496.8	1,403.8	56.2%	582.4	Grants
Mat'ls for the Visually Impaired	2,121.0	1,700.0	80.2%	175.0	Targeted Init. - with The Chicago Lighthouse for People who are Blind or Visually Impaired
Response to Intervention	2,000.0	0.0	0.0%	0.0	Grants
Refugee Children	2,000.0	0.0	0.0%	0.0	Grants
Classroom Cubed	2,000.0	1,434.7	71.7%	565.3	Grant to Rock Island Milan School Dist 41.
Advanced Placement Fee	2,000.0	746.8	37.3%	256.8	Fee reimbursement for Adv Placement Exam and Int'l Baccalaureate exam
Advanced Placement Classes	1,635.3	1,212.1	74.1%	75.9	Grants
Title VI-Flex. & Acct Rural Education	1,500.0	462.4	30.8%	128.3	Grants to school districts
Temporary Relocation	1,400.0	440.9	31.5%	185.8	Formula grants for school emergency relocation
Recording - Blind and Dyslexic	1,218.8	1,218.0	99.9%	200.0	Grant to increase achievement of students with visual impairments
School Transportation	1,200.0	981.8	81.8%	218.2	Grants
Principal Mentoring Prgm Grants	1,082.6	0.0	0.0%	0.0	Grants
Transition to Teaching	1,000.0	432.1	43.2%	45.9	Grant to Illinois Resource Center
Healthy Kids/Minds/Vision Cicero/Berwyn	1,000.0	0.0	0.0%	0.0	Grants
Emergency Financial Assistance	1,000.0	0.0	0.0%	0.0	Formula and loans to school districts
Chicago Prin. & Admin Assoc.	1,000.0	0.0	0.0%	0.0	Grant to the Chicago Principals and Administrators Assoc.
Aerospace Ed Initiative	920.0	891.0	96.8%	133.0	Grant to Chicago Aerospace States Association
ONPAR	800.0	129.7	16.2%	0.0	Grant
Illinois Breakfast Incentive	723.5	153.8	21.3%	6.1	Reimbursement and grant to public and private schools and child-care institutions
Minority Transition	578.8	468.4	80.9%	111.6	Grants - serves disadvantage students from selected Chicago HS and elem. schools
Regional Supt. Initiatives	500.0	408.3	81.7%	91.7	Targeted Initiatives - to St. Clair & Madison ROE's
After School Matters	500.0	0.0	0.0%	0.0	Grant to After School Matters
Teach America	450.0	337.5	75.0%	337.5	Grant for Teach for America
Deaf/Blind	450.0	212.0	47.1%	30.0	Grant to Philip J. Rock Center
IDEA Model Outreach	400.0	0.0	0.0%	0.0	Competitive
IL Economic Education	250.0	205.2	82.1%	205.2	Grant to IL Council on Economic Education
Tax Equivalent Grants	222.6	222.6	100.0%	0.0	Grant to Chaney-Monge School District
Metro East Consortium	217.1	173.7	80.0%	43.4	Grant to provide staff development to increase student achievement in MECCA
Museum of Science & Industry	200.0	0.0	0.0%	0.0	Grant

	<u>Funded Amount</u>	<u>Expended Year to Date</u>	<u>% Spent Year to Date</u>	<u>March Expenditures</u>	<u>Description</u>
Adler Planetarium	200.0	0.0	0.0%	0.0	Grants
IL Teach Excellence-Teach of year	135.0	77.1	57.1%	38.6	Grants for Teacher of the Year
IL Gov't Internship	129.9	95.9	73.8%	20.9	Targeted Initiative - Springfield School Dist. 186
Supervisory Expense	102.0	102.0	100.0%	0.0	Supervisory Expense
Parental Participation Pilot	100.0	95.0	95.0%	21.2	Grants
Autism Training & Tech Assist.	100.0	88.9	88.9%	22.2	Grants to the IL Autism Training & Tech Assistance Program
ROE Bus Driver Training	70.0	70.0	100.0%	0.0	ROE Bus Driver Training
Mental Health - Federal	25.8	25.8	100.0%	0.0	Grant
Charter Schools-Rev Loan Fund	20.0	0.0	0.0%	0.0	Other/Repayment of loans

**ILLINOIS STATE BOARD OF EDUCATION
HEADCOUNT AS OF MARCH 2009**



*Headcount revised in April of FY07 and Oct. and Feb. of FY08

**ILLINOIS STATE BOARD OF EDUCATION
AGENCY STAFF DETAIL AS OF MARCH 2009**

	Mgmt.	Prof.	Support	GRF	Non-GRF	Total
SUPERINTENDENT'S OFFICE						
State Superintendent	1	0	3	4	0	4
Board Services	0	1	1	2	0	2
General Counsel	2	10	2	14	0	14
Governmental Relations	0	2	0	1	1	2
Internal Audit	<u>1</u>	<u>2</u>	<u>1</u>	<u>2</u>	<u>2</u>	<u>4</u>
Sub-Total	4	15	7	23	3	26
HUMAN RESOURCES						
Human Resources	<u>4</u>	<u>3</u>	<u>6</u>	<u>11</u>	<u>2</u>	<u>13</u>
Sub-Total	4	3	6	11	2	13
PUBLIC INFORMATION						
Public Information	<u>1</u>	<u>5</u>	<u>1</u>	<u>6</u>	<u>1</u>	<u>7</u>
Sub-Total	1	5	1	6	1	7
SPECIAL EDUCATION SERVICES						
Special Education Admin.	1	0	1	0	2	2
Special Education Services - Spfld.	2	25	6	2	31	33
Special Education Services - Chgo.	<u>2</u>	<u>21</u>	<u>2</u>	<u>0</u>	<u>25</u>	<u>25</u>
Sub-Total	5	46	9	2	58	60
EDUCATIONAL PROGRAMS						
Career & Technical Education	1	8	2	5	6	11
Early Childhood	1	9	2	5	7	12
English Language Learning	1	7	1	3	6	9
Grants and Programs	<u>2</u>	<u>18</u>	<u>3</u>	<u>2</u>	<u>21</u>	<u>23</u>
Sub-Total	5	42	8	15	40	55
STANDARDS & ASSESSMENTS						
Standards & Assessment Admin.	1	1	1	2	1	3
Data Analysis & Progress Reporting	1	8	3	10	2	12
Assessment	2	13	2	5	12	17
Curriculum & Instruction	<u>2</u>	<u>14</u>	<u>3</u>	<u>8</u>	<u>11</u>	<u>19</u>
	6	36	9	25	26	51

	Mgmt.	Prof.	Support	GRF	Non-GRF	Total
SCHOOL SUPPORT SERVICES FOR ALL SCHOOLS						
School Support Admin	1	0	1	2	0	2
Educator Certification	1	9	12	9	13	22
Educator & School Development	2	17	10	18	11	29
Nutrition Programs	<u>2</u>	<u>37</u>	<u>5</u>	<u>3</u>	<u>41</u>	<u>44</u>
	6	63	28	32	65	97
FISCAL SUPPORT SERVICES						
Fiscal Support Services Admin.	1	0	0	1	0	1
Budget & Financial Management	0	7	1	7	1	8
Data Systems	3	29	2	20	14	34
Technology Support	1	18	3	15	7	22
Fiscal & Procurement	2	12	6	12	8	20
Administrative Services	1	3	13	12	5	17
Funding and Disbursements	2	20	10	13	19	32
School Business Services	1	13	2	15	1	16
External Assurance	<u>2</u>	<u>18</u>	<u>2</u>	<u>7</u>	<u>15</u>	<u>22</u>
Sub-Total	13	120	39	102	70	172
GRAND TOTAL, ALL CENTERS	44	330	107	216	265	481
	9%	69%	22%	45%	55%	100%

**ILLINOIS STATE BOARD OF EDUCATION
Personnel Transactions As of March 2009**

Transaction Data:

	<u>FY01</u>	<u>FY02</u>	<u>FY03</u>	<u>FY04</u>	<u>FY05</u>	<u>FY06</u>	<u>FY07</u>	<u>FY08</u>	<u>FY09</u>
Begin Year	787	739	650	522	471	487	478	463	475
Hire Externally	27	5	29	20	77	37	44	54	26
Recall	0	0	11	19	4	4	0	1	1
Retire	-35	-37	-128	-34	-30	-25	-20	-19	-9
Resign	-35	-21	-13	-24	-31	-17	-33	-19	-8
Discharge	-2	-9	-2	-2	-4	-7	-5	-4	-3
Layoff	0	-25	-22	-30	0	0	0	0	0
Death	-3	-2	-3	0	0	-1	-1	0	0
Other	<u>0</u>	<u>0</u>	<u>0</u>	<u>0</u>	<u>0</u>	<u>0</u>	<u>0</u>	<u>-1</u>	<u>-1</u>
End Year	739	650	522	471	487	478	463	475	481