

ILLINOIS STATE BOARD OF EDUCATION

100 N. First Street
Springfield, Illinois

February 18-19, 2009

NOTE: Staff presentations and detailed Board discussion typically take place during Committee meetings one month prior to State Board action in the plenary session.

All open meetings will be audio cast on the Internet at: www.isbe.net

WEDNESDAY, FEBRUARY 18, 2009

- 8:30 a.m. Tour Springfield S.D. #186 Early Learning Center**
2501 South First Street, Springfield, IL
- 9:45 a.m. WORK STUDY: Early Childhood Education**
Board Room, 4th Floor
- *11:15 a.m. Governmental Relations Committee of the Whole**
Board Room, 4th Floor
- 12:30 p.m. Break for Lunch**
- *1:00 p.m. Education Policy Planning Committee of the Whole (*immediately following lunch*)**
Board Room, 4th Floor
- *2:25 p.m. Finance & Audit Committee of the Whole**
Board Room, 4th Floor
- *4:00 p.m. Board Operations Committee of the Whole**
Board Room, 4th Floor

NOTICE: In accordance with the Illinois Open Meetings Act, notice is hereby posted that some or all members of the Illinois State Board of Education may be attending, as guests, the Illinois Education Roundtable Legislative Forum at the Inn at 835, Springfield, IL, beginning at 5:30 p.m. No Board action will be taken. If members of the public wish to attend this forum, please RSVP to the Illinois Education Roundtable at nalee@niu.edu by February 13, 2009.

* The meeting will begin at the conclusion of the previous session.

THURSDAY, FEBRUARY 19, 2009

- 8:45 a.m. Ad Hoc Rules Committee of the Whole**
Board Room, 4th Floor
- *9:15 a.m. ISBE Plenary Session**
Board Room, 4th Floor

* The meeting will begin at the conclusion of the previous session.

All State Board of Education meetings listed on this agenda will be accessible to persons with disabilities. Persons planning to attend who need special accommodations should contact the Board office no later than the date prior to the meeting. Contact the Superintendent's office at the State Board of Education, Phone: 217-782-2221; TTY/TDD: 17-782-1900; Fax: 217-785-3972.

NOTE: Chairman Ruiz may call to order the Board's plenary session early for the sole purpose of hearing a motion to go into closed session. In such case, the plenary session will reconvene for action items at the time posted. Chairman Ruiz may also call for a break in the plenary session on Thursday at which time the Board will go into closed session.

ILLINOIS STATE BOARD OF EDUCATION
PLENARY SESSION
Board Room, 4th Floor
100 North First Street, Springfield, Illinois

February 19, 2009
9:15 a.m.

(This meeting will begin immediately following the previous session.)

NOTE: Staff presentations and detailed Board discussion typically take place during Committee meetings one month prior to State Board action in the plenary session.

All meetings will be audio cast on the Internet at www.isbe.net

- A. Roll Call/Pledge of Allegiance** *(timeframes are estimated for planning purposes)*
1. Consideration of and Possible Actions on Any Requests for Participation in Meeting by Other Means
- B. Resolutions & Recognition**
1. Ridgeview Elementary School (Colfax) - Silver Level Healthier US School Challenge School **(p. 4)**
2. Bushnell-Prairie City Elementary School - Silver Level Healthier US School Challenge School **(p. 5)**
- C. Public Participation** 9:15 – 9:45 a.m.

D. Superintendent's Report

*** Consent Agenda**

All action consideration items listed with an asterisk (*) are considered to be routine and will be enacted in one motion and vote. Any board member who wishes separate discussion on any item listed on the consent agenda may remove that item from the consent agenda, in which event, the item will be considered in its normal sequence.

Action Considerations

consent agenda items: 9:45 – 10:00 a.m.

- *1. Approval of Minutes: January 27, 2009 **(Plenary Packet pp. 6-12)**
- *2. Rules for Initial Review
a. Part 140 (Calculation of Excess Cost Under Section 18-3 of the School Code) **(Rules pp. 4-11)**
b. Part 240 (Alternative Learning Opportunities Program) **(Rules pp. 12-16)**
c. Part 405 (Payments to Certain Facilities Under Section 14-7.05) **(Rules pp. 17-26)**
- *3. Rules for Adoption
a. Part 1 (Public Schools Evaluation, Recognition and Supervision) **(Rules pp. 27-42)**
b. Part 25 (Certification) **(Rules pp. 43-54)**
- *4. Contracts & Grants Over \$1 Million
a. Contract Renewal: Target Area Development Corporation (Grow Your Own Illinois) **(Finance pp. 6-18)**
b. Contract: Southern Illinois University – Carbondale (School Meals Initiative Review) **(Finance pp. 19-20)**
c. Contract: Harte Hanks (Third Party Assessment Oversight) **(Finance pp. 21-22)**
d. Request for Proposals (RFP): Preschool for All Children Ages 3 to 5 Years: FY10 **(Finance pp. 23-24)**
e. Request for Proposals (RFP): Prevention Initiative Birth to 3 Years: FY10 **(Finance pp. 25-26)**
- *5. Spring Mandate Waiver Report **(Governmental Relations Packet pp. 49-80)**
- *6. Revision of 2009 Calendar of Meetings **(Board Operations Packet pp. 7-8)**
- *7. Teacher Certification Board Recommendations
a. Accreditation and Program Approvals **(Plenary Packet pp. 13-20)**
(1) Aurora University
(2) Erickson Institute
(3) Quincy University
(4) Trinity Christian College
(5) University of St. Francis
b. Program Approval **(Plenary Packet pp. 21-23)**
(1) Loyola University
- *8. Partnership for 21st Century Skills **(Education Policy Planning Packet pp. 5-10)**

End of consent agenda

- | | |
|--|-------------------------|
| 9. Election of Officers | 10:00 – 10:10 |
| 10. Federal Stimulus (as needed) | |
| E. New Business | 10:10 – 10:15 a.m. |
| F. Announcements and Reports | 10:15 – 10:55 a.m. |
| 1. IBHE Liaison Report (<i>Dr. Proshanta Nandi</i>) | 10:15 a.m. – 10:25 a.m. |
| 2. Superintendent's Announcements | 10:25 – 10:35 a.m. |
| 3. Chairman's Report | 10:35 a.m. - 10:45 a.m. |
| 4. Member Reports | 10:45 - 10:55 a.m. |
| G. Information Items | |
| 1. ISBE Fiscal & Administrative Monthly Reports (<i>Plenary pp. 24-51</i>) | |
| H. Adjourn | |

NOTE: Chairman Ruiz may call to order the Board's plenary session early for the sole purpose of hearing a motion to go into closed session. In such case, the plenary session will reconvene at the time announced. Chairman Ruiz may also call for a break in the plenary session at which time the Board will go into closed session.

DRAFT

**Illinois State Board of Education
Resolution**



**Honoring
Ridgeview Elementary School
February 2009**

WHEREAS, Ridgeview Elementary School in Colfax, Illinois was recently named Illinois' first HealthierUS School Challenge recipient for the silver level; and

WHEREAS, Ridgeview Elementary School is a Team Nutrition School; and

WHEREAS, Ridgeview Elementary School offers reimbursable lunches demonstrating healthy menu planning practices as well as meeting the principles of the Dietary Guidelines for Americans; and

WHEREAS, the staff of Ridgeview Elementary School provides nutrition education and opportunities for physical education to their students; and

WHEREAS, Ridgeview Elementary School maintains an average daily participation of 70 percent or greater; and

WHEREAS, Ridgeview Elementary School adheres to established guidelines of the Food and Nutrition Service under the United States Department of Agriculture for foods served and sold in school outside of the National School Lunch Program;

WHEREAS, the administration and staff of Ridgeview Elementary School collaborate to ensure their students are nutritionally prepared to be successful learners;

THEREFORE, BE IT RESOLVED that the Illinois State Board of Education extends its sincere appreciation and deep respect to the administration and staff of Ridgeview Elementary School on this the 18th day of February, 2009, for their commitment and dedication to providing the healthiest learning environment possible.

Jesse H. Ruiz, Chairman

Christopher J. Ward, Vice Chairman

Vinni M. Hall, Secretary

Andrea S. Brown, Member

Dean E. Clark, Member

David L. Fields, Member

Brenda J. Holmes, Member

Joyce E. Karon, Member

Lanita J. Koster, Member

DRAFT

Illinois State Board of Education
Resolution



Honoring
Bushnell-Prairie City Elementary School
February 2009

WHEREAS, Bushnell-Prairie City Elementary School was recently named an Illinois HealthierUS School Challenge recipient for the silver level; and

WHEREAS, Bushnell-Prairie City Elementary School is a Team Nutrition School; and

WHEREAS, Bushnell-Prairie City Elementary School offers reimbursable lunches demonstrating healthy menu planning practices as well as meeting the principles of the Dietary Guidelines for Americans; and

WHEREAS, the staff of Bushnell-Prairie City Elementary School provides nutrition education, expanded opportunities for physical activities, and conducts four family nights that focus on math, reading, science and fine arts in conjunction with nutritional information and activities; and

WHEREAS, Bushnell-Prairie City Elementary School maintains an average daily participation of 70 percent or greater; and

WHEREAS, Bushnell-Prairie City Elementary School adheres to established guidelines of the Food and Nutrition Service under the United States Department of Agriculture for foods served and sold in school outside of the National School Lunch Program;

WHEREAS, the administration and staff of Bushnell-Prairie City Elementary School collaborate to ensure their students are nutritionally prepared to be successful learners;

THEREFORE, BE IT RESOLVED that the Illinois State Board of Education extends its sincere appreciation and deep respect to the administration and staff of Bushnell-Prairie City Elementary School on this the 18th day of February, 2009, for their commitment and dedication to providing the healthiest learning environment possible.

Jesse H. Ruiz, Chairman

Christopher J. Ward, Vice Chairman

Vinni M. Hall, Secretary

Andrea S. Brown, Member

Dean E. Clark, Member

David L. Fields, Member

Brenda J. Holmes, Member

Joyce E. Karon, Member

Lanita J. Koster, Member

**Illinois State Board of Education Meeting
January 27, 2009
Office of the Capital Development Board
Room 14-612 (Video Conference Room)
100 West Randolph
Chicago, Illinois**

<p>ROLL CALL/PLEDGE OF ALLEGIANCE</p>	<p>Mr. Jesse Ruiz, Chairman, called the meeting to order at 8:30 a.m. Chairman Ruiz asked Ms. Jean Ladage, Assistant to the Board, to call the roll. A quorum was present. Dr. Christopher Koch, State Superintendent of Education, was also in attendance.</p> <p>Chairman Ruiz announced that the Board meeting was being audio-cast live over the Internet.</p> <p><u>Members Present:</u> Mr. Jesse Ruiz, Chairman Dr. Christopher Ward, Vice Chairman Dr. Vinni Hall, Secretary Dr. Andrea Brown Mr. Dean Clark Dr. David Fields Ms. Brenda Holmes Ms. Joyce Karon Ms. Lanita Koster</p> <p><u>Members Absent:</u> None</p>
<p>RESOLUTIONS & RECOGNITIONS</p>	<p>Dr. Ward moved that the State Board of Education adopt the resolutions for the following recipients:</p> <ul style="list-style-type: none"> o Joanne Zendol - the recipient of the Illinois State Board of Education's 2008 Thomas Lay Burroughs Award; o Lieutenant Colonel Dan Swanson, who retained an active position as an AlWood School District 225 school board member while serving in Iraq; o Chicago Public School parents Clifford Fields, Debra Hopkins and Trista Hogue-Bonds, for their leadership and dedication at their children's schools. <p>Mr. Clark seconded the motion and it passed with a unanimous voice vote.</p>
<p>PUBLIC PARTICIPATION & PRAIRIE CROSSING CHARTER RENEWAL HEARINOT N</p>	<p>Jack Wuest of the Alternative Schools Network thanked the Board for their support of the Re-Enrolling Students Program and he looks forward to their partnership with the State Board in the next year.</p> <p>Rod Wilson of the Grow Your Own Program (GYO) thanked the Board for the support they have given to program. GYO looks forward to achieving their goal of improving and training a thousand new highly qualified teachers.</p> <p>Mr. Wilson then introduced Ms. Ana Nava, a GYO candidate at Malcolm X College. Ms. Nava is the mother of two children, and works as a security officer at Little Village Lawndale Campus.</p> <p>Mr. Wilson followed up by indicating the GYO Program is requesting \$4.5 million dollars in FY 2010. These funds will cover forgivable loans and offer other forms of support for the 500 students already in college. The funds will bring 175 teacher candidates off the waiting list and into the GYO Program. It will also allow two new GYO programs to develop in low-income, high-need communities.</p>

Janet Milkovich thanked the Board for their support of Recording for the Blind & Dyslexic. The program has helped 10,000 people around the state who cannot read because of low vision or a processing difficulty, such as dyslexia.

Josie Yanguas an Executive Board member of the Illinois Association for Multilingual Multicultural Education (IAMME) requested that the Board resubmit the letter they sent last year to the United States Department of Education asking for flexibility in the interpretation of the scores because of the drastic policy change in testing. Illinois now has ISAT performance data for ELL students. She stated that the chief stumbling block was the Reading/Language Arts component of the test. ISAT testing of this student population simply became a test of the English Language, rather than an assessment of what ELLs know in different content areas.

As more and more schools and districts do not meet AYP because of performance of ELLs, IAMME is very concerned about the debilitating effects that these policies will have on students and the educators that serve them as NCLB sanctions continue to be issued. These sanctions will lead some schools to redesign instructional programs that go against what research tells us regarding best instructional practices for ELLs as well as against key provisions in the Illinois School Code regarding ELLs.

Respicio Vazquez of Franczek, Radelet & Rose, Counsel for Prairie Crossing Charter School (PCCS), introduced **Geoff Deigan**, President of the Prairie Crossing Charter School, Myron Dagley, Director of the District Betsy Jung, Business Manager and Mark Dybas, Board Member and Chair of the Governance Committee.

Mr. Deigan on behalf of PCCS and the Board of Directors, staff and 300 students thanked the State Board of Education for considering their request for renewal of the charter. Mr. Deigan commented that PCCS appreciates the professionalism displayed by the State Board staff, and especially the outstanding support of Chairman Ruiz, Superintendent Chris Koch, Darren Reisberg and Jo Ann Price. The school continues to achieve some of the highest ISAT test scores in the State, having over 96% meeting and/or exceeding state standards last year. PCCS was voted one of the top 50 charter schools in the nation by Center for Education Reform and is the only environmental charter school in the state. Mr. Diegan thanked the Board for their time and attention they have given the recharter for PCCS.

Superintendent Koch stated that today's meeting is a public hearing as required by statute within 45 days of receiving the application and that there will be no decision or action taken today.

Dr. Koch asked Mr. Deigan if the governance of PCCS facilitates appropriate decision making. Mr. Deigan indicated there were a few problems in the beginning, but in the last 18 months they have made great strides. They have focused on re-establishing some of the committees they had, increased participation and really focused on governance of the school. PCCS has a strong staff with a lot of experience behind them. Mr. Deigan feels they are past their growing pains and will continue to see progress

Kim Vander Yacht, a parent of an 8th grade student at PCCS indicated her son has thrived at Prairie Crossing and has been afforded amazing

opportunities from fine teachers, administrators and board.

Michelle Helle, a parent of a 5th and 7th graders currently enrolled at PCCS spoke in support PCCS's re-charter. Ms. Helle talked about the opportunities and experiences her children have had by attending PCCS and encouraged the State Board to support the school's mission to provide outstanding public education by renewing its charter.

Ellen Ley, a parent of four children, one who has graduated from PCCS and two that are still attending, spoke on the advantage she has had to compare her oldest daughter's education in a public school to her other children's education at PCCS. She commented they have received a very good education and have shown a great joy for learning, and have been given an unbelievable opportunity that can never be taken away from them.

Laura Elizabeth Fay, a parent of two PCCS students and an active parent volunteer, as well as a former board member, voiced her concerns about PCCS. Ms. Fay is in support of the pending charter renewal, but has several concerns about the operation of the school. Her concerns include the complex implications of a ten-year charter renewal, outreach, transportation, delivery of special education services and how these factors, in combination, could effectively preclude many children in the Woodland and Fremont school districts from attending PCCS. (See Ms. Fay's written testimony for more details on her concerns.) Ms. Fay closed by saying that she hoped that PCCS could become a school of choice to anyone residing in Woodland or Fremont districts who feel their child would thrive in a small public school setting, with small classrooms, and a creative and innovative approach to learning without the shackles of traditional public school bureaucracy.

Chairman Ruiz informed Ms. Fay that the renewal, if approved, would be a 5-year renewal, as that is the maximum allowed in statute.

Ms. Holmes asked those in attendance to let others know that additional testimony can be sent to Jean Ladage.

Prairie Crossing Charter School Counsel Respicio Vasquez stated that he would be glad to address any questions or concerns that any board member, parent, or concerned citizen might have.

Ms. Karon asked if agency staff had been in contact with the other two schools involved, Woodland and Fremont. Jo Ann Price stated that they were notified of the hearing and informed of the location of the proposal on our website. They were not required to participate but they were made aware of the opportunity.

Mr. Clark commented stated that six years ago when the Board went through the original PCCS charter, there were the same concerns: special education services, outreach, transportation, etc. Mr. Clark requested some reassurance before the February meeting that these issues are being worked on and that school is open to every child who is eligible.

Dr. Fields requested that Superintendent Koch ask PCCS to provide information on the demographics, special education services, transportation, lunch, etc.

	<p>Ms. Holmes commented that the charter school was designed to have flexibility with the oversight of the State Board.</p> <p>Mr. Reisberg reviewed the process of the charter school renewal. He stated that although the Charter Schools Act does not specify any deadlines to respond to renewals, the Agency has always required school districts to follow the same timelines as those specified for initial proposals. Under the Act, schools districts are required, within forty-five (45) days of receipt of a charter proposal, to convene a public meeting to obtain information to assist the local board in its decision to grant or deny the charter school proposal. There is no similar provision that requires the State Board to convene such a hearing or to follow specific timelines. Yet, it made sense to utilize similar timelines given that the review the Agency is required to conduct is similar to the review school districts must conduct when considering renewals. The hearing notice was posted at least 5 days prior to the hearing, and gave individuals an opportunity to comment. Anyone who wishes to provide the Board with comments for consideration may do so prior to the Board's vote, which is expected in February. They may also attend the February Board meeting to provide comments.</p> <p>Mr. Reisberg stated that staff would be available for any questions the Board might have regarding concerns raised. He also indicated that the State Board has the ability to engage in negotiations with respect to the contract renewal. If members of the public feel there are particular issues in terms of outreach or transportation that they would recommend be added to the contract between ISBE and PCCS, please let staff know so those issues can be considered. Mr. Reisberg asked that those with concerns be specific as they know what the best outreach would be in the community. This would ensure the negotiation of the contract protects the civil rights of any individual in the district.</p> <p>Dr. Koch stated that he will be making his recommendation to the Board based on a review of information submitted in response to specific questions posed by the Board and his staff.</p>
<p>CONSENT AGENDA</p>	<p><u>Motion:</u> Dr. Hall moved that the State Board of Education approve the consent agenda as presented. Mr. Clark seconded the motion and it passed with a unanimous roll call vote. The following motions were approved by action taken in the consent agenda motion:</p> <p style="text-align: center;"><u>Approval of Minutes</u></p> <p>The State Board of Education hereby approves the minutes for the December 18, 2008 Board meeting.</p> <p style="text-align: center;"><u>Rules for Initial Review</u></p> <p style="text-align: center;">Part 145 (Temporary Relocation Expense) and Part 151 (School Construction Program)</p> <p>The State Board of Education hereby authorizes the solicitation of public comment on the proposed rulemaking for Temporary Relocation Expense (23 Illinois Administrative Code 145), and School Construction Program (23 Illinois Administrative Code 151), including publication of the proposed amendments in the <u>Illinois Register</u>.</p> <p style="text-align: center;">Part 675 (Providers of Supplemental Educational Services)</p> <p>The State Board of Education hereby authorizes the solicitation of public</p>

	<p>comment on the proposed rulemaking for: Providers of Supplemental Educational Services (23 Illinois Administrative Code 675), including publication of the proposed amendments in the <u>Illinois Register</u>.</p> <p style="text-align: center;"><u>Rules for Adoption</u> Part 260 (Reading Improvement Block Grant)</p> <p>The State Board of Education hereby adopts the proposed rulemaking for: Reading Improvement Block Grant (23 Illinois Administrative Code 260). Further, the Board authorizes the State Superintendent of Education to make such technical and nonsubstantive changes, as the State Superintendent may deem necessary in response to suggestions or objections of the Joint Committee on Administrative Rules.</p> <p>END OF THE CONSENT AGENDA</p>
<p>LEGISLATIVE PROPOSALS</p>	<p>Ms. Holmes moved that the State Board of Education hereby directs the following legislative proposals move forward as Agency-initiated proposals for the spring 2009 legislative session:</p> <p><u>Priority #1</u> (# 1) Repeal of Obsolete and Duplicative Statues (# 11) Longitudinal Data Systems</p> <p><u>Priority #2</u> (# 17) PSAE Changes</p> <p>The State Board of Education further authorizes the State Superintendent and Agency staff to work with education stakeholders to continue developing Proposal # 12 (Certification-One Certificate) for potential introduction in 2010.</p> <p>Dr. Ward seconded the motion and it passed with a unanimous voice vote.</p>
<p>APPROVAL OF STATE BOARD OF EDUCATION FY10 BUDGET</p>	<p>Superintendent Koch noted that there are two budgets, the first one showing the federal with the state budget; and the second one with the changes that were discussed in yesterday's Finance and Audit Committee meeting. Dr. Koch indicated the revisions included the Tax Increment impacting one district, the Autism line, Re-Enrolling Task Force is changed to Alternative School Network, and On-line Databases has been added for \$2.5 million.</p> <p>Mr. Clark moved that the FY10 Budget be approved as amended in the January 26, 2009, Finance & Audit Committee of the Whole.</p> <p>Dr. Ward seconded the motion and it passed with a unanimous roll call vote.</p> <p>Dr. Ward recognized and thanked Finance & Audit Committee Chair Dean Clark, fellow board members, Superintendent Koch and agency staff for the work on the budget. Mr. Clark stated that he feels good about the budget and the information that has been provided to the legislature to make them aware of the needs for education. Chairman Ruiz, Dr. Fields, Ms. Holmes also expressed their thanks.</p>
<p>SUPERINTEDENT'S CONTRACT</p>	<p>This agenda item was deferred until after closed session.</p>
<p>NEW BUSINESS</p>	<p>Chairman Ruiz stated that he has asked Joyce Karon and Dean Clark to serve as the Nominating Committee for the 2009 Election of Officers.</p> <p>In advance of the February meeting, the nominating committee will send a</p>

	<p>Dr. Brown said that she presented at an IASA division meeting, attended the Illinois Association for Supervision and Curriculum Development conference and worked with IEA on a grant.</p> <p>Dr. Hall reported that she served on the NASBE Power of Partnerships Study Group in Arlington, VA, on January 23-24, 2009.</p>
CHAIRMAN'S ANNOUNCEMENT	<p>Chairman Ruiz announced that following closed session, the Board will reconvene and may take action on agenda item D-6.</p>
CLOSED SESSION	<p>Ms. Karon moved that the Board enter into closed session under the exceptions set forth in the Open Meetings Act of the State of Illinois as follows</p> <p style="padding-left: 40px;">Section c1 for the purpose of considering the appointment, employment, compensation, performance or dismissal of an employee; and</p> <p style="padding-left: 40px;">Section c11 for the purpose of considering pending or probable litigation against or affecting the Board.</p> <p>Ms. Karon further moved that the Board may invite anyone they wish to have included in this closed session.</p> <p>Dr. Fields seconded the motion and it passed with unanimous roll call vote.</p> <p>The open meeting recessed at 10:45 a.m. and the Board went into closed session at 11:15 a.m. The open meeting reconvened at 12:25 p.m.</p>
SUPERINTEDEDENT'S CONTRACT	<p>On behalf of the Board, Mr. Clark thanked Dr. Koch for his excellent work on behalf of Illinois students in 2008. Dr. Koch's contract is performance-based, and part of his compensation comes in the form of a year-end adjustment based on meeting certain criteria set forth by the Board.</p> <p>Mr. Clark moved that due to the economic crisis Illinois is facing at this time, and despite Dr. Koch having more than met the Board's expectations, the Board chooses not to make a salary adjustment at this time.</p> <p>The Board nevertheless shall take into consideration its lack of payment to Dr. Koch for 2008 at such time that it makes its compensation decision for January 2010.</p> <p>Dr. Fields seconded the motion and it passed with unanimous voice vote.</p>
MOTION FOR ADJOURNMENT	<p>Mr. Clark moved that the meeting be adjourned. Dr. Fields seconded the motion and it passed with unanimous voice vote. The meeting adjourned at 12:30 p.m.</p>



Respectfully Submitted,

Dr. Vinni Hall
Board Secretary

Mr. Jesse Ruiz
Chairman

ILLINOIS STATE BOARD OF EDUCATION MEETING
February 18 – 19, 2009

TO: Illinois State Board of Education

FROM: Christopher A. Koch, Ed.D., State Superintendent of Education 
Linda Tomlinson, Ed.D., Assistant Superintendent 

Agenda Topic: Institutional Accreditation and Program Approvals
Aurora University
Erickson Institute
Quincy University
Trinity Christian College
University of St. Francis

Materials: State Teacher Certification Unit Accreditation and Program Approval

Staff Contact: Patrick Murphy
Phyliss Jones

Purpose of Agenda Item

The purpose of this agenda item is to consider the State Teacher Certification Board's recommendation for the accreditation of the following educational units and the approval of their programs: Aurora University; Erickson Institute; Quincy University; Trinity Christian College; and the University of St. Francis.

Expected Outcome(s) of Agenda Item

The State Teacher Certification Board voted to recommend unit accreditation and approval of Aurora University's, Erickson Institute's, Quincy University's, Trinity Christian College's, and the University of St. Francis' programs in accordance with the State Board's administrative rules, Section 25.125 (j)(1). The State Board's unit accreditation decision will authorize the institution to conduct its programs and recommend candidates for certification by entitlement.

Relationship to/Implications for the State Board's Strategic Plan

The approval of the education units and the professional preparation programs has linkage to Goal 2--"To ensure that every student will be supported by highly prepared and effective teachers and school leaders.". These units and standards-based programs will prepare educators with expertise in discipline-specific content areas and ensure that teachers and administrators demonstrate best practices to help all students learn.

Background Information

Aurora University

Aurora University is an established Illinois teacher preparation institution that offers undergraduate and graduate programs in elementary education, two special certification content areas, three secondary content areas, administrative certificates, and the school social worker.

An NCATE team conducted an on-site initial NCATE accreditation review and a continuing State review of Aurora University April, 2008. As per the Illinois administrative rules, Section 25.125 (d)(2), the team was accompanied by a state consultant who served as an ex officio member to ensure that the applicable Illinois standards, procedures, rules, and statutes were addressed.

The program review was conducted by Specialized Professional Associations review teams in advance of the on-site accreditation review. The program recommendations were submitted to the State Certification Board for consideration on December 3 – 4, 2008.

Erickson Institute

Erickson Institute is an established Illinois Teacher preparation institution that offers a graduate program in early childhood education.

A State team conducted an on-site continuing accreditation review of Erickson Institute in February, 2008. As per the Illinois administrative rules, Section 25.125 (d)(1), the team was accompanied by a state consultant who served as an ex officio member to ensure that the applicable Illinois standards, procedures, rules, and statutes were addressed.

The program review was conducted by an ISBE review team in advance of the on-site accreditation review. The program recommendations were submitted to the State Certification Board for consideration on December 3 – 4, 2008.

Quincy University

Quincy University is an established Illinois Teacher preparation institution that offers undergraduate and graduate programs in elementary education, three special certification content areas, four secondary content areas, administrative certificates, and the school counselor.

A State team conducted an on-site continuing accreditation review of Quincy University in March, 2008. As per the Illinois administrative rules, Section 25.125 (d)(1), the team was accompanied by a state consultant who served as an ex officio member to ensure that the applicable Illinois standards, procedures, rules, and statutes were addressed.

The program review was conducted by an ISBE review team in advance of the on-site accreditation review. The program recommendations were submitted to the State Certification Board for consideration on December 3 – 4, 2008.

Trinity Christian College

Trinity Christian College is an established Illinois Teacher preparation institution that offers undergraduate programs in elementary education, four special certification content areas, and seven secondary content areas.

The March 2008 accreditation visit to Trinity Christian College was carried out as a full focused visit based on the findings of the February 2005 team visit, the recommendation of the State Certification Board to the State Board of Education, and the decision of the State Board of Education after review of a Notice of Objection submitted by the institution. In addition to staff support, the agency funded an external consultant (which is required by Title II) to work with the institution. The 2008 site visitation team found that Trinity Christian College's Education Unit had made many changes based on the previous team findings and had worked very hard to amend their practices. As a result of this hard work, the team found that all six NCATE standards were met.

The program recommendations were submitted to the State Certification Board for consideration on December 3 – 4, 2008.

University of St. Francis

The University of St. Francis is an established Illinois teacher preparation institution that offers undergraduate and graduate programs in elementary education, two special certification content areas, four secondary content areas, administrative certificates, and the reading specialist.

An NCATE team conducted an on-site initial NCATE accreditation review and a continuing State review of the University of St. Francis in February, 2008. As per the Illinois administrative rules, Section 25.125 (d)(2), the team was accompanied by a state consultant who served as an ex officio member to ensure that the applicable Illinois standards, procedures, rules, and statutes were addressed.

The program review was conducted by Specialized Professional Associations review teams in advance of the on-site accreditation review. The program recommendations were submitted to the State Certification Board for consideration on December 3 – 4, 2008.

Analysis and Implications for Policy, Budget, Legislative Action and Communications

The reviews were conducted in the spring of 2008. The teams reviewed the institutional report (self-study) of how each institution addresses the *NCATE Unit Standards Edition 2002*; reviewed extensive exhibits related to the conceptual framework and six unit standards; interviewed administrators, faculty, support personnel, undergraduate and graduate program candidates, alumni, and members of the public school community who participate in the preparation of candidates and decision-making processes of the educational unit; observed in K - 12 classrooms throughout the institution's service region; and visited campus facilities.

As defined by Sections 25.125(i) & (j) of the State Board's administrative rules, the State Teacher Certification Board (STCB) conducted its accreditation review of institutions and programs on Thursday, December 4, and Friday, December 5, 2008.

Based on the review of these documents, the Certification Board recommends to the State Board of Education that the following institutions be assigned "continuing accreditation" with the following unit accreditation findings.

Institution	STCB Recommendations for Unit Standards Findings	Recommendation(s) for Program(s) Approval
Aurora University	Stand 1 - Met with Area(s) for Improvement	General Administrative – Principal Superintendent Elementary Education English Language Arts Mathematics Reading Specialist School Social Worker
	Stand 2 - Met with Area(s) for Improvement	
	Stand 3 - Met	
	Stand 4 - Met with Area(s) for Improvement	
	Stand 5 - Met with Area(s) for Improvement	
	Stand 6 - Met with Area(s) for Improvement	
Erickson Institute	Stand 1 - Met with Area(s) for Improvement	Early Childhood Education
	Stand 2 - Met with Area(s) for Improvement	
	Stand 3 - Met	
	Stand 4 - Met	
	Stand 5 - Met	
	Stand 6 – Met	
Quincy University	Stand 1 - Met	General Administrative – Principal Elementary Education English Language Arts Mathematics Music Education Physical Education Science – Biology Social Science – History LBS I Visual Arts School Counselor
	Stand 2 – Not Met	
	Stand 3 - Met	
	Stand 4 - Met	
	Stand 5 – Met – Initial Met with Area(s) for Improvement - Advanced	
	Stand 6 - Met	

Institution	STCB Recommendations for Unit Standards Findings	Recommendation(s) for Program(s) Approval
Trinity Christian College	Stand 1 - Met	Business Education Elementary Education English Language Arts Foreign Language - Spanish Mathematics Music Education Physical Education Science – Biology Science - Chemistry Social Science – History LBS I Visual Arts
	Stand 2 - Met	
	Stand 3 - Met	
	Stand 4 - Met	
	Stand 5 - Met	
	Stand 6 - Met	
University of St. Francis	Stand 1 - Met with Area(s) for Improvement	General Administrative – Principal Elementary Education Mathematics Reading Specialist Science – Biology Social Science - History
	Stand 2 - Met	
	Stand 3 - Met	
	Stand 4 - Met with Area(s) for Improvement	
	Stand 5 - Met	
	Stand 6 – Met	

Pros and Cons of Various Actions

Accreditation and approval the educational units will allow the institutions to entitle program completers for certification in their approved program areas.

Superintendent's Recommendations

I recommend that the following motions be adopted:

Motion 1

The State Board of Education hereby assigns the status of "continuing accreditation" to **Aurora University**. This action authorizes the institution to conduct its programs and recommend candidates for certification by entitlement until the time of the institution's next scheduled review.

The State Board of Education hereby assigns "continuing approval" to the following professional education preparation programs for **Aurora University** as it meets the applicable Illinois content area standards.

- General Administrative – Principal
- Superintendent
- Elementary Education
- English Language Arts
- Mathematics
- Reading Specialist
- School Social Worker

Motion 2

The State Board of Education hereby assigns the status of "continuing accreditation" to **Erickson Institute**. This action authorizes the institution to conduct its programs and recommend candidates for certification by entitlement until the time of the institution's next scheduled review.

The State Board of Education hereby assigns "continuing approval" to the following professional education preparation programs for **Erickson Institute** as it meets the applicable Illinois content area standards.

- Early Childhood

Motion 3

The State Board of Education hereby assigns the status of "accreditation with conditions" to **Quincy University**. This action requires that the unit make adjustments so as to satisfy the conditions expressed within six months, and submit documentation that addresses the unmet standards as well as any other areas for improvement within that time. Quincy University is authorized to conduct its approved programs and to recommend candidates for certification by entitlement. Quincy University shall, within 30 days after receipt of the State Board's decision, provide written notification to the candidates enrolled in the unit's programs to this effect.

Motion 4

The State Board of Education hereby assigns “continuing approval” to the following professional education preparation programs for **Quincy University** as it meets the applicable Illinois content area standards.

- General Administrative – Principal
- Elementary Education
- English Language Arts
- Mathematics
- Music Education
- Physical Education
- Science – Biology
- Social Science – History
- LBS I
- Visual Arts
- School Counselor

Motion 5

The State Board of Education hereby assigns the status of "continuing accreditation" to **Trinity Christian College**. This action authorizes the institution to conduct its programs and recommend candidates for certification by entitlement until the time of the institution's next scheduled review.

The State Board of Education hereby assigns “continuing approval” to the following professional education preparation programs for **Trinity Christian College** as it meets the applicable Illinois content area standards.

- Business Education
- Elementary Education
- English Language Arts
- Foreign Language - Spanish
- Mathematics
- Music Education
- Physical Education
- Science – Biology
- Science - Chemistry
- Social Science – History
- LBS I
- Visual Arts

Motion 6

The State Board of Education hereby assigns the status of "continuing accreditation" to the **University of St. Francis**. This action authorizes the institution to conduct its programs and recommend candidates for certification by entitlement until the time of the institution's next scheduled review.

The State Board of Education hereby assigns “continuing approval” to the following professional education preparation programs for **University of St. Francis** as it meets the applicable Illinois content area standards.



- General Administrative – Principal
- Elementary Education
- Mathematics
- Reading Specialist
- Science – Biology
- Social Science – History

Next Steps

Aurora University; Erickson Institute, Quincy University, Trinity Christian College, and the University of St. Francis will be notified regarding the State Board’s decision. The State Teacher Certification Board will also be notified, and the State Board’s Directory of Approved Institutions and Programs will be updated to reflect the accreditation status.

ILLINOIS STATE BOARD OF EDUCATION MEETING
February 18 – 19, 2009

TO: Illinois State Board of Education

FROM: Christopher A. Koch, Ed.D., State Superintendent of Education 
Linda Tomlinson, Ed.D., Assistant Superintendent 

Agenda Topic: New Program Approvals

Materials: State Teacher Certification New Program Approval

Staff Contact: Patrick Murphy
Phyliss Jones

Purpose of Agenda Item

The purpose of this agenda item is the consideration of the recommendation by the State Certification Board of the new program proposal from Loyola University.

Expected Outcome(s) of Agenda Item

The State Teacher Certification Board voted to recommend approval of a new program proposal from Loyola University for a MEd. and a Special Type 10 Certificate, Learning Behavior Specialist II with an endorsement in Behavior Intervention Specialist in accordance with Section 25.145(d) of the State Board's administrative rules. The State Board's decision authorizes the institution to conduct the program and recommend candidates for certification by entitlement.

Relationship to/Implications for the State Board's Strategic Plan

The approval of the professional preparation program has linkage to Goal 2--"To ensure that every student will be supported by highly prepared and effective teachers and school leaders." This standards-based program will prepare educators with expertise in discipline-specific content areas and ensure that teachers and administrators demonstrate best practices to help all students learn.

This standards-based program will prepare educators with expertise in discipline-specific content areas and ensure that teachers and administrators demonstrate best practices to help all students learn. Of the 60 higher education institutions that have been approved to offer education programs in Illinois only seven offer LBS II programs:

Eastern Illinois University
LBS II/Behavior Intervention Specialist
LBS II/Curriculum Adaptation Specialist

Illinois State University
LBS II/Behavior Intervention Specialist
LBS II/Curriculum Adaptation Specialist
LBS II/Deaf-Blind Specialist
LBS II/Multiple Disabilities Specialist
LBS II/Technology Specialist
LBS II/Transition Specialist

Northeastern Illinois University
LBS II/Behavior Intervention Specialist
LBS II/Curriculum Adaptation Specialist

Northern Illinois University
LBS II/Behavior Intervention Specialist
LBS II/Curriculum Adaptation Specialist
LBS II/Multiple Disabilities Specialist
LBS II/Technology Specialist

Southern Illinois University Edwardsville
LBS II/Curriculum Adaptation Specialist

University of Illinois at Chicago
LBS II/Bilingual Education Specialist
LBS II/Technology Specialist

University of Illinois at Urbana
LBS II/Behavior Intervention Specialist
LBS II/Curriculum Adaptation Specialist
LBS II/Multiple Disabilities Specialist
LBS II/Transition Specialist

Loyola would be the eighth institution to offer the LBS II but this would be only the sixth approved program for Behavior Intervention Specialist. These programs offer special education teachers opportunities to gain in-depth knowledge and skills for working with students and modifying behaviors to improve instruction.

Background Information

Loyola University Chicago

Loyola University is an established Illinois-approved teacher preparation institution that offers: undergraduate programs in elementary education, learning behavior specialist (LBS I), eleven secondary education areas, and two K-12 special certification areas; and graduate programs in general administrative-principal and superintendent and school service personnel (school counselor, school social worker, and school psychologist).

Policy Implications: None

Budget Implications: None

Legislative Action: None

Communication: Loyola University will be notified regarding the State Board's decision. The State Teacher Certification Board will also be notified, and the State Board's Directory of Approved Institutions and Programs will be updated to reflect the new program status.

Pros and Cons of Various Actions

Approval of the program will authorize Loyola University Chicago to entitle graduates for the Special Type 10 Learning Behavior Specialist II with an endorsement in Behavior Intervention Specialist.

Superintendent's Recommendation

I recommend that the following motions be adopted:

The State Board of Education provisionally approves the Loyola University Chicago Learning Behavior Specialist II with an endorsement in Behavior Intervention Specialist program, thereby authorizing the university to conduct the program and to recommend candidates for certification by entitlement until the time of the institution's next accreditation review.

ILLINOIS STATE BOARD OF EDUCATION MEETING
February 18, 2009

TO: Illinois State Board of Education

FROM: Christopher A. Koch, Ed.D., State Superintendent of Education 
Linda Riley Mitchell, Chief Financial Officer 
Donald W. Evans, Director of Human Resources, Professional Development and Conference Planning 

Agenda Topic: Information Item: SBE Fiscal & Administrative Monthly Reports

Materials: Appropriations and Spending by Program
Financial Status Report (contract & grant detail)
Comparative Statement of Expenditures
Monthly Headcount Graph, Staff Detail, Personnel Transactions

Purpose of Agenda Item

To provide the Board standard reports with key information on fiscal and administrative activities of the state Agency.

Relationship to/Implications for the State Board's Strategic Plan

Not applicable – informational item only.

Expected Outcome(s) of Agenda Item

Not applicable – informational item only.

Background Information

In June 2002, the State Board adopted bylaws outlining a new committee structure under which fiscal, audit and operations issues will be handled by the Finance and Audit Committee. The Superintendent requested that the Agency organize and standardize the financial and headcount data provided to the Board for their future policy work and decision making.

Currently, the following reports are provided:

1. Budget/Annual Report (annually in January)
2. Condition of Public Education (December)
3. Comptroller SEA Report (annually in February)
4. Appropriation and Expenditure (monthly)
5. Financial Status Report – Contract/Grant Detail (monthly)
6. Comparative Statement of Expenditures (monthly)
7. Headcount Reports (monthly)
Personnel Transactions, Staff Detail by Division, & Monthly Headcount Graph

Analysis and Implications for Policy, Budget, Legislative Action and Communications

The monthly or Quarterly Fiscal and Headcount Reports were first provided to the Board in August 2002. These reports provide information regarding staffing and funding as well as details of contracts over \$50,000 and grants the Agency is processing. All contracts and grants totaling over \$1 million are reviewed at the Board level. Included in this month's review are:

Two Grants:

- Truants Alternative Optional Education Program (TAOEP)
- State Homeless Grant

Three Contracts over \$1 million:

- Target Area Development Corporation (Grow Your Own, Illinois)
- SIU-C (School Meals Initiative Review)
- Harte Hanks (Third Party Assessment Oversight)

Two Requests for Proposals:

- Preschool for All Children Ages 3-5 (FY10)
- Prevention Initiative Birth to 3 Years (FY10)

Superintendent's Recommendation

None needed.

Next Steps

Continue to provide these reports pursuant to the schedule above.

ILLINOIS STATE BOARD OF EDUCATION
Financial Status Report
July 1, 2008 through January 31, 2009
(Fiscal Year 2009)

	Appropriation Amount	Expenditures to Date	Unexpended Appropriation	Percentage spent YTD	Percentage Unexpended
<u>General Revenue Fund</u>					
Personal Services and Related Expenditures	17,375,800	10,820,562	6,555,238	62.27%	37.73%
Contractual Services	5,857,200	3,906,531	1,950,669	66.70%	33.30%
Travel	313,700	140,027	173,673	44.64%	55.36%
Commodities	59,100	46,682	12,418	78.99%	21.01%
Printing	85,200	23,885	61,315	28.03%	71.97%
Equipment	70,900	6,802	64,098	9.59%	90.41%
Telecommunications	468,600	160,493	308,107	34.25%	65.75%
Operation of Automotive Equipment	20,000	8,025	11,975	40.13%	59.87%
Lump Sums	33,502,000	7,901,893	25,600,107	23.59%	76.41%
<i>Sub-total</i>	57,752,500	23,014,900	34,737,600	39.85%	60.15%
Awards and Grants	2,543,734,893	1,263,063,829	1,280,671,064	49.65%	50.35%
Total General Revenue Fund	2,601,487,393	1,286,078,729	1,315,408,664	49.44%	50.56%
<u>Education Assistance Fund</u>					
Awards and Grants	1,372,627,300	495,572,087	877,055,213	36.10%	63.90%
Total Education Assistance Fund	1,372,627,300	495,572,087	877,055,213	36.10%	63.90%
<u>Common School Fund</u>					
Regional Superintendent Salaries	9,100,000	5,249,472	3,850,528	57.69%	42.31%
General State Aid	3,467,140,000	2,161,656,569	1,305,483,431	62.35%	37.65%
Total Common School Fund	3,476,240,000	2,166,906,041	1,309,333,959	62.33%	37.67%
<u>Teacher Certification Fee Revolving Fund</u>					
Lump Sums	1,600,000	687,155	912,845	42.95%	57.05%
Total Teacher Certification Fee Revolving Fund	1,600,000	687,155	912,845	42.95%	57.05%

ILLINOIS STATE BOARD OF EDUCATION
Financial Status Report
July 1, 2008 through January 31, 2009
(Fiscal Year 2009)

	Appropriation Amount	Expenditures to Date	Unexpended Appropriation	Percentage spent YTD	Percentage Unexpended
<u>Drivers Education Fund</u>					
Personal Services and Related Expenditures	80,800	42,633	38,167	52.76%	47.24%
Awards and Grants	17,929,600	8,963,115	8,966,485	49.99%	50.01%
Total Drivers Education Fund	18,010,400	9,005,749	9,004,651	50.00%	50.00%
<u>School Dist. Emergency Financial Asst. Fund</u>					
Awards and Grants	1,000,000	-	1,000,000	0.00%	100.00%
<u>SBE Special Purpose Trust Fund</u>					
Lump Sums	15,500,000	1,707,058	13,792,942	11.01%	88.99%
<u>SBE Teacher Certification Institution Fund</u>					
Lump Sums	1,008,900	166,519	842,381	16.51%	83.49%
<u>SBE Federal Department of Agriculture Fund</u>					
Personal Services and Related Expenditures	5,015,800	2,718,374	2,297,426	54.20%	45.80%
Contractual Services	3,250,000	1,115,377	2,134,623	34.32%	65.68%
Travel	375,000	132,528	242,472	35.34%	64.66%
Commodities	85,000	12,393	72,607	14.58%	85.42%
Printing	150,000	8,322	141,678	5.55%	94.45%
Equipment	150,000	4,680	145,320	3.12%	96.88%
Telecommunications	50,000	-	50,000	0.00%	100.00%
Sub-total	9,075,800	3,991,675	5,084,125	43.98%	56.02%
Awards and Grants	525,000,000	251,189,601	273,810,399	47.85%	52.15%
Total SBE Federal Department of Agriculture Fund	534,075,800	255,181,276	278,894,524	47.78%	52.22%

ILLINOIS STATE BOARD OF EDUCATION
Financial Status Report
July 1, 2008 through January 31, 2009
(Fiscal Year 2009)

	Appropriation Amount	Expenditures to Date	Unexpended Appropriation	Percentage spent YTD	Percentage Unexpended
<u>SBE Federal Agency Services Fund</u>					
Personal Services and Related Expenditures	120,900	69,359	51,541	57.37%	42.63%
Contractual Services	900,000	38,028	861,972	4.23%	95.77%
Travel	30,000	5,900	24,100	19.67%	80.33%
Commodities	15,000	10,001	4,999	66.67%	33.33%
Printing	7,000	-	7,000	0.00%	100.00%
Equipment	11,000	-	11,000	0.00%	100.00%
Telecommunications	9,000	-	9,000	0.00%	100.00%
<i>Sub-total</i>	1,092,900	123,288	969,612	11.28%	88.72%
Awards and Grants	4,500,000	337,593	4,162,407	7.50%	92.50%
Total SBE Federal Agency Services Fund	5,592,900	460,881	5,132,019	8.24%	91.76%
<u>SBE Federal Department of Education Fund</u>					
Personal Services and Related Expenditures	17,511,400	8,129,249	9,382,151	46.42%	53.58%
Contractual Services	14,700,500	2,842,607	11,857,893	19.34%	80.66%
Travel	1,375,000	311,474	1,063,526	22.65%	77.35%
Commodities	305,000	14,343	290,657	4.70%	95.30%
Printing	341,000	5,774	335,226	1.69%	98.31%
Equipment	455,000	27,760	427,240	6.10%	93.90%
Telecommunications	400,000	-	400,000	0.00%	100.00%
Lump Sums	23,780,300	3,925,279	19,855,021	16.51%	83.49%
<i>Sub-total</i>	58,868,200	15,256,486	43,611,714	25.92%	74.08%
Awards and Grants	1,696,500,000	569,024,232	1,127,475,768	33.54%	66.46%
Total SBE Federal Department of Education Fund	1,755,368,200	584,280,718	1,171,087,482	33.29%	66.71%
<u>Charter Schools Revolving Loan Program Fund</u>					
Awards and Grants	20,000	-	20,000	0.00%	100.00%
<u>School Infrastructure Fund</u>					
Personal Services and Related Expenditures	113,000	59,070	53,930	52.27%	47.73%

ILLINOIS STATE BOARD OF EDUCATION
Financial Status Report
July 1, 2008 through January 31, 2009
(Fiscal Year 2009)

	Appropriation Amount	Expenditures to Date	Unexpended Appropriation	Percentage spent YTD	Percentage Unexpended
<u>School Technology Revolving Loan Program Fund</u>					
Awards and Grants	5,000,000	12,976	4,987,024	0.26%	99.74%
<u>Temporary Relocation Expenses Revolving Grant Fund</u>					
Awards and Grants	1,400,000	255,069	1,144,931	18.22%	81.78%
ISBE TOTALS	9,789,043,893	4,800,373,327	4,988,670,566	49.04%	50.96%

ILLINOIS STATE BOARD OF EDUCATION
Combined Financial Status Report
July 1, 2008 through January 31, 2009
(Fiscal Year 2009)

	Appropriation Amount	Expenditures to Date	Unexpended Appropriation	Percentage spent YTD	Percentage Unexpended
<u>All Funds</u>					
Personal Services and Related Expenditures	40,217,700	21,839,248	18,378,452	54.30%	45.70%
Contractual Services	24,707,700	7,902,543	16,805,157	31.98%	68.02%
Travel	2,093,700	589,928	1,503,772	28.18%	71.82%
Commodities	464,100	83,418	380,682	17.97%	82.03%
Printing	583,200	37,981	545,219	6.51%	93.49%
Equipment	686,900	39,242	647,658	5.71%	94.29%
Telecommunications	927,600	160,493	767,107	17.30%	82.70%
Operation of Automotive Equipment	20,000	8,025	11,975	40.13%	59.87%
Lump Sums	75,391,200	14,387,905	61,003,296	19.08%	80.92%
<i>Sub-total</i>	145,092,100	45,048,784	100,043,316	31.05%	68.95%
Awards and Grants	9,643,951,793	4,755,324,544	4,888,627,249	49.31%	50.69%
Total All Funds	9,789,043,893	4,800,373,327	4,988,670,566	49.04%	50.96%
<u>General Revenue Fund</u>					
Personal Services and Related Expenditures	17,375,800	10,820,562	6,555,238	62.27%	37.73%
Contractual Services	5,857,200	3,906,531	1,950,669	66.70%	33.30%
Travel	313,700	140,027	173,673	44.64%	55.36%
Commodities	59,100	46,682	12,418	78.99%	21.01%
Printing	85,200	23,885	61,315	28.03%	71.97%
Equipment	70,900	6,802	64,098	9.59%	90.41%
Telecommunications	468,600	160,493	308,107	34.25%	65.75%
Operation of Automotive Equipment	20,000	8,025	11,975	40.13%	59.87%
Lump Sums	33,502,000	7,901,893	25,600,107	23.59%	76.41%
<i>Sub-total</i>	57,752,500	23,014,900	34,737,600	39.85%	60.15%
Awards and Grants	2,543,734,893	1,263,063,829	1,280,671,064	49.65%	50.35%
Total General Revenue Fund	2,601,487,393	1,286,078,729	1,315,408,664	49.44%	50.56%
<u>Other State Funds</u>					
Personal Services and Related Expenditures	193,800	101,703	92,097	52.48%	47.52%
Lump Sums	18,108,900	2,560,732	15,548,168	14.14%	85.86%
<i>Sub-total</i>	18,302,700	2,662,436	15,640,264	14.55%	85.45%
Awards and Grants	4,874,216,900	2,671,709,289	2,202,507,611	54.81%	45.19%
Total Other State Funds	4,892,519,600	2,674,371,724	2,218,147,876	54.66%	45.34%
<u>Federal Funds</u>					
Personal Services and Related Expenditures	22,648,100	10,916,982	11,731,118	48.20%	51.80%
Contractual Services	18,850,500	3,996,013	14,854,487	21.20%	78.80%
Travel	1,780,000	449,901	1,330,099	25.28%	74.72%
Commodities	405,000	36,736	368,264	9.07%	90.93%
Printing	498,000	14,096	483,904	2.83%	97.17%
Equipment	616,000	32,441	583,559	5.27%	94.73%
Telecommunications	459,000	-	459,000	0.00%	100.00%
Lump Sums	23,780,300	3,925,279	19,855,021	16.51%	83.49%
<i>Sub-total</i>	69,036,900	19,371,448	49,665,452	28.06%	71.94%
Awards and Grants	2,226,000,000	820,551,426	1,405,448,574	36.86%	63.14%
Total Federal Funds	2,295,036,900	839,922,874	1,455,114,026	36.60%	63.40%

ILLINOIS STATE BOARD OF EDUCATION
Awards and Grants Expenditures
July 1, 2008 through January 31, 2009
(Fiscal Year 2009)

<u><i>General Revenue Fund</i></u>	Appropriation Amount	Expenditures to Date	Unexpended Appropriation	Percentage spent YTD	Percentage Unexpended
Parental Participation Pilot Project	100,000	73,800	26,200	73.80%	26.20%
Regional Superintendents Initiatives	500,000	316,664	183,336	63.33%	36.67%
Rural Technology Initiatives	4,000,000	-	4,000,000	0.00%	100.00%
Targeted Interventions	4,000,000	1,386,152	2,613,848	34.65%	65.35%
Classroom Cubed	2,000,000	869,492	1,130,508	43.47%	56.53%
Hard to Staff Schools	3,000,000	-	3,000,000	0.00%	100.00%
Regional Superintendent Services-Bus Driver Training	70,000	70,000	-	100.00%	0.00%
Re-enrollment Student Program	4,000,000	2,760,000	1,240,000	69.00%	31.00%
Response to Intervention	2,000,000	-	2,000,000	0.00%	100.00%
Mentoring and After School Programs	9,700,000	817,135	8,882,865	8.42%	91.58%
Chicago Aerospace Initiative	920,000	758,000	162,000	82.39%	17.61%
Homeless Education	3,000,000	-	3,000,000	0.00%	100.00%
Adler Planetarium	200,000	-	200,000	0.00%	100.00%
Truant Alternative/Optional Education	20,078,100	14,660,898	5,417,202	73.02%	26.98%
Metro East Consortium/Student Advocacy	217,100	130,260	86,840	60.00%	40.00%
Jobs for Illinois Grads	4,000,000	2,666,668	1,333,332	66.67%	33.33%
ROE and ISC Operations Reimbursement	6,318,000	4,491,629	1,826,371	71.09%	28.91%
IL Governmental Student Internship	129,900	75,000	54,900	57.74%	42.26%
Standards, Assessments and Accountability	3,042,700	1,541,013	1,501,687	50.65%	49.35%
Teachers and Administrators Mentoring Program	13,378,800	2,714,232	10,664,568	20.29%	79.71%
Principal Mentoring Program	1,291,600	-	1,291,600	0.00%	100.00%
Chicago Principals and Administrators	1,000,000	-	1,000,000	0.00%	100.00%
Minority Transition Program Reimbursement	578,800	356,800	222,000	61.64%	38.36%
Philip Rock Center Reimbursement	3,577,800	2,327,475	1,250,325	65.05%	34.95%
Educational Materials Unit	2,121,000	1,375,000	746,000	64.83%	35.17%
Gifted Education	7,000,000	-	7,000,000	0.00%	100.00%
Technology for Success	2,719,700	1,351,123	1,368,577	49.68%	50.32%
Special Ed - Private Facility Tuition	151,600,000	112,258,628	39,341,372	74.05%	25.95%
Special Ed - Extraordinary	331,051,100	131,305,482	199,745,618	39.66%	60.34%
Special Ed - Personnel	426,100,000	253,742,534	172,357,466	59.55%	40.45%
Special Ed - Orphanage	101,800,000	69,511,378	32,288,622	68.28%	31.72%
Bilingual Education - Chicago	41,500,000	41,500,000	-	100.00%	0.00%
Bilingual Education - Downstate	34,152,000	6,917,289	27,234,711	20.25%	79.75%
Transportation - Regular/Vocational	339,500,000	172,747,156	166,752,844	50.88%	49.12%
Transportation - Special Education	383,300,000	132,813,449	250,486,551	34.65%	65.35%
State Free Lunch and Breakfast	26,300,000	18,914,998	7,385,002	71.92%	28.08%

ILLINOIS STATE BOARD OF EDUCATION
Awards and Grants Expenditures
July 1, 2008 through January 31, 2009
(Fiscal Year 2009)

<i><u>General Revenue Fund, continued</u></i>	Appropriation Amount	Expenditures to Date	Unexpended Appropriation	Percentage spent YTD	Percentage Unexpended
Illinois Breakfast Incentive Reimbursement	723,500	138,829	584,671	19.19%	80.81%
Textbook Loan Program	42,826,500	-	42,826,500	0.00%	100.00%
Textbook Loan Program Reappropriation	39,636,500	37,360,671	2,275,829	94.26%	5.74%
Advanced Placement Classes	1,635,300	989,376	645,924	60.50%	39.50%
Grow Your Own Teachers	3,031,200	1,239,157	1,792,043	40.88%	59.12%
Parent/Guardian Transportation Reimbursement	11,954,700	11,938,409	16,291	99.86%	0.14%
State Charter Schools	3,421,500	1,711,667	1,709,833	50.03%	49.97%
Tax Equivalent Grants	222,600	222,600	-	100.00%	0.00%
GRF Transfer/Temporary Relocation Rev. Grant Fund	100,000	100,000	-	100.00%	0.00%
Recording for Blind & Dyslexic Grant	1,218,800	1,018,000	200,800	83.52%	16.48%
Vocational Ed. - Agriculture Education	3,381,200	2,334,852	1,046,348	69.05%	30.95%
Teach for America	450,000	-	450,000	0.00%	100.00%
Illinois Economic Education Program	250,000	-	250,000	0.00%	100.00%
Class Size Reduction Pilot Project	8,000,000	3,015,986	4,984,014	37.70%	62.30%
Autism Training & Tech Assistance	100,000	66,670	33,330	66.67%	33.33%
Children's Mental Health Partnership	2,496,800	485,648	2,011,152	19.45%	80.55%
Healthy Kids/Healthy Minds/Expanded Vision	3,000,000	1,500,000	1,500,000	50.00%	50.00%
Arts and Foreign Language	4,000,000	1,134,162	2,865,838	28.35%	71.65%
Grants for School Transportation	1,200,000	763,637	436,363	63.64%	36.36%
Healthy Kids/Healthy Minds/Expanded Vision	1,000,000	-	1,000,000	0.00%	100.00%
Alternative Education	18,535,500	8,250,854	10,284,646	44.51%	55.49%
Early Childhood Block Grant	376,324,500	177,831,961	198,492,539	47.25%	52.75%
ROE Services - Supervisory Expenses	102,000	102,000	-	100.00%	0.00%
Orphanage Tuition	11,600,000	6,365,444	5,234,556	54.87%	45.13%
Reorganization Incentive	7,850,000	5,475,319	2,374,681	69.75%	30.25%
Special Education - Summer School	11,000,000	10,854,376	145,624	98.68%	1.32%
Transitional Assistance	36,763,600	-	36,763,600	0.00%	100.00%
Fast Growth Schools	7,500,000	7,500,000	0	100.00%	0.00%
After School Matters	500,000	-	500,000	0.00%	100.00%
Museum of Science and Industry	200,000	-	200,000	0.00%	100.00%
Total General Revenue Fund	2,533,270,800	1,258,851,872	1,274,418,928	49.69%	50.31%

ILLINOIS STATE BOARD OF EDUCATION
Awards and Grants Expenditures
July 1, 2008 through January 31, 2009
(Fiscal Year 2009)

	Appropriation Amount	Expenditures to Date	Unexpended Appropriation	Percentage spent YTD	Percentage Unexpended
<u>Education Assistance Fund</u>					
Teacher of the Year Program	135,000	38,570	96,430	28.57%	71.43%
Summer Bridges	22,238,100	16,281,387	5,956,713	73.21%	26.79%
Teacher Education	11,485,000	-	11,485,000	0.00%	100.00%
General State Aid	1,123,119,900	341,193,936	781,925,964	30.38%	69.62%
Career and Technical Education	38,562,100	26,893,026	11,669,074	69.74%	30.26%
School Safety & Educational Improvement Block Grant	74,841,000	37,428,053	37,412,947	50.01%	49.99%
Reading Improvement Block Grant	76,139,800	47,630,715	28,509,085	62.56%	37.44%
General State Aid - Hold Harmless	26,106,400	26,106,400	0	100.00%	0.00%
Total Education Assistance Fund	1,372,627,300	495,572,087	877,055,213	36.10%	63.90%
<u>Common School Fund</u>					
Regional Superintendent Salaries	9,100,000	5,249,472	3,850,528	57.69%	42.31%
General State Aid	3,467,140,000	2,161,656,569	1,305,483,431	62.35%	37.65%
Total Common School Fund	3,476,240,000	2,166,906,041	1,309,333,959	62.33%	37.67%
<u>Drivers Education Fund</u>					
Driver Education Grants	17,929,600	8,963,115	8,966,485	49.99%	50.01%
Total Drivers Education Fund	17,929,600	8,963,115	8,966,485	49.99%	50.01%
<u>School Dist. Emergency Financial Asst. Fund</u>					
School District Emergency Financial Assistance	1,000,000	-	1,000,000	0.00%	100.00%
Total School Dist. Emergency Fin. Asst. Fund	1,000,000	-	1,000,000	0.00%	100.00%
<u>SBE Federal Department of Agriculture Fund</u>					
Federal Nutrition Programs	525,000,000	251,189,601	273,810,399	47.85%	52.15%
Total SBE Federal Department of Agriculture Fund	525,000,000	251,189,601	273,810,399	47.85%	52.15%

ILLINOIS STATE BOARD OF EDUCATION
Awards and Grants Expenditures
July 1, 2008 through January 31, 2009
(Fiscal Year 2009)

	Appropriation Amount	Expenditures to Date	Unexpended Appropriation	Percentage spent YTD	Percentage Unexpended
<u>SBE Federal Agency Services Fund</u>					
Refugee Services	2,000,000	-	2,000,000	0.00%	100.00%
Learn and Serve America	2,500,000	337,593	2,162,407	13.50%	86.50%
Total SBE Federal Agency Services Fund	4,500,000	337,593	4,162,407	7.50%	92.50%
<u>SBE Federal Department of Education Fund</u>					
Title VI Rural and Low Income Students	1,500,000	317,139	1,182,861	21.14%	78.86%
Title III - English Language Acquisition	40,000,000	3,881,138	36,118,862	9.70%	90.30%
Integration of Mental Health	25,819	25,819	-	100.00%	0.00%
ONPAR	800,000	129,690	670,310	16.21%	83.79%
Enhancing Education Through Technology	20,000,000	5,530,103	14,469,897	27.65%	72.35%
Charter Schools	6,000,000	232,700	5,767,300	3.88%	96.12%
Advanced Placement Fee	2,000,000	489,942	1,510,058	24.50%	75.50%
Title I - Basic	675,000,000	188,666,914	486,333,086	27.95%	72.05%
Title I - Reading First	60,000,000	16,797,525	43,202,475	28.00%	72.00%
Title IV - Safe & Drug Free Schools	15,000,000	3,503,790	11,496,210	23.36%	76.64%
Title IV - 21st Century/Community Service	55,000,000	15,836,859	39,163,141	28.79%	71.21%
Title II - Teacher Quality	135,000,000	29,899,759	105,100,241	22.15%	77.85%
Title II - Transition to Teaching	1,000,000	386,227	613,773	38.62%	61.38%
Title II - Math/Science Partnerships	9,000,000	1,538,508	7,461,492	17.09%	82.91%
Title X - McKinney Homeless	3,250,000	1,688,255	1,561,745	51.95%	48.05%
IDEA - Preschool	25,000,000	8,859,669	16,140,331	35.44%	64.56%
IDEA - Improvement	2,500,000	811,858	1,688,142	32.47%	67.53%
IDEA	570,000,000	263,448,721	306,551,279	46.22%	53.78%
IDEA - Model Outreach	400,000	-	400,000	0.00%	100.00%
IDEA - Deaf/Blind	450,000	167,577	282,423	37.24%	62.76%
Career and Technical Education - Basic Perkins	55,000,000	24,564,932	30,435,068	44.66%	55.34%
Career and Technical Education - Tech Prep	5,000,000	2,066,203	2,933,797	41.32%	58.68%
Special Federal Congressional Initiatives	4,995,500	34,656	4,960,844	0.69%	99.31%
Title V - Innovative Programs	8,000,000	85,931	7,914,069	1.07%	98.93%
Total SBE Federal Department of Education Fund	1,694,921,319	568,963,916	1,125,957,403	33.57%	66.43%

ILLINOIS STATE BOARD OF EDUCATION
Awards and Grants Expenditures
July 1, 2008 through January 31, 2009
(Fiscal Year 2009)

	Appropriation Amount	Expenditures to Date	Unexpended Appropriation	Percentage spent YTD	Percentage Unexpended
<u>Charter Schools Revolving Loan Program Fund</u>					
Charter Schools Revolving Loans	20,000	-	20,000	0.00%	100.00%
Total Charter Schools Rev. Loan Program Fund	20,000	-	20,000	0.00%	100.00%
<u>School Technology Revolving Loan Program Fund</u>					
School Technology Revolving Loans	5,000,000	12,976	4,987,024	0.26%	99.74%
Total School Technology Rev. Loan Program Fund	5,000,000	12,976	4,987,024	0.26%	99.74%
<u>Temporary Relocation Expenses Revolving Grant Fund</u>					
Temporary Relocation Revolving Loans/Grants	1,400,000	255,069	1,144,931	18.22%	81.78%
Total Temporary Relocation Exp. Rev. Grant Fund	1,400,000	255,069	1,144,931	18.22%	81.78%
 TOTAL AWARDS AND GRANTS - ALL FUNDS	 9,631,909,019	 4,751,052,270	 4,880,856,749	 49.33%	 50.67%

ILLINOIS STATE BOARD OF EDUCATION
Comparative Statement of Expenditures to Date (January 31)
Fiscal Years 2009 and 2008

	FY09			FY08		
	Appropriation Amount	Expenditures to Date	Percentage to Date	Appropriation Amount	Expenditures to Date	Percentage to Date
<u>All Funds</u>						
Personal Services and Related Expenditures	40,217,700	21,839,248	54.30%	40,050,295	22,142,749	55.29%
Contractual Services	24,707,700	7,902,543	31.98%	22,575,800	7,176,352	31.79%
Travel	2,093,700	589,928	28.18%	2,128,700	570,590	26.80%
Commodities	464,100	83,418	17.97%	448,100	74,214	16.56%
Printing	583,200	37,981	6.51%	531,200	78,013	14.69%
Equipment	686,900	39,242	5.71%	733,100	71,299	9.73%
Telecommunications	927,600	160,493	17.30%	892,600	146,259	16.39%
Operation of Automotive Equipment	20,000	8,025	40.13%	22,000	10,487	47.67%
Lump Sums	75,391,200	14,387,905	19.08%	60,162,564	14,644,480	24.34%
Sub-total	145,092,100	45,048,784	31.05%	127,544,359	44,914,443	35.21%
Awards and Grants	9,643,951,793	4,755,324,544	49.31%	9,188,763,363	4,055,558,716	44.14%
Total All Funds	9,789,043,893	4,800,373,327	49.04%	9,316,307,722	4,100,473,159	44.01%

General Revenue Fund

Personal Services and Related Expenditures	17,375,800	10,820,562	62.27%	16,770,500	10,612,000	63.28%
Contractual Services	5,857,200	3,906,531	66.70%	5,821,000	3,043,933	52.29%
Travel	313,700	140,027	44.64%	348,700	177,746	50.97%
Commodities	59,100	46,682	78.99%	59,100	51,701	87.48%
Printing	85,200	23,885	28.03%	83,200	31,161	37.45%
Equipment	70,900	6,802	9.59%	107,100	31,826	29.72%
Telecommunications	468,600	160,493	34.25%	433,600	99,737	23.00%
Operation of Automotive Equipment	20,000	8,025	40.13%	22,000	10,487	47.67%
Lump Sums	33,502,000	7,901,893	23.59%	18,474,364	7,435,877	40.25%
Sub-total	57,752,500	23,014,900	39.85%	42,119,564	21,494,469	51.03%
Awards and Grants	2,543,734,893	1,263,063,829	49.65%	2,351,678,880	1,140,332,061	48.49%
Total General Revenue Fund	2,601,487,393	1,286,078,729	49.44%	2,393,798,444	1,161,826,529	48.53%

Other State Funds

Personal Services and Related Expenditures	193,800	101,703	52.48%	1,273,400	682,663	53.61%
Lump Sums	18,108,900	2,560,732	14.14%	17,907,900	1,806,425	10.09%
Sub-total	18,302,700	2,662,436	14.55%	19,181,300	2,489,088	12.98%
Awards and Grants	4,874,216,900	2,671,709,289	54.81%	4,737,654,483	2,271,586,525	47.95%
Total Other State Funds	4,892,519,600	2,674,371,724	54.66%	4,756,835,783	2,274,075,612	47.81%

Federal Funds

Personal Services and Related Expenditures	22,648,100	10,916,982	48.20%	22,006,395	10,848,086	49.30%
Contractual Services	18,850,500	3,996,013	21.20%	16,754,800	4,132,419	24.66%
Travel	1,780,000	449,901	25.28%	1,780,000	392,845	22.07%
Commodities	405,000	36,736	9.07%	389,000	22,513	5.79%
Printing	498,000	14,096	2.83%	448,000	46,852	10.46%
Equipment	616,000	32,441	5.27%	626,000	39,473	6.31%
Telecommunications	459,000	-	0.00%	459,000	46,521	10.14%
Lump Sums	23,780,300	3,925,279	16.51%	23,780,300	5,402,178	22.72%
Sub-total	69,036,900	19,371,448	28.06%	66,243,495	20,930,887	31.60%
Awards and Grants	2,226,000,000	820,551,426	36.86%	2,099,430,000	643,640,131	30.66%
Total Federal Funds	2,295,036,900	839,922,874	36.60%	2,165,673,495	664,571,017	30.69%

Illinois State Board of Education

FY 2009 Appropriation & Spending by Program 07/01/2008 thru 01/31/2009

(Dollars in Thousands)

Initiatives	Appropriation			YTD Expenditures		
	Total	Grants	Admin	Total	Grants	Admin
STATE						
Distributive Grants	<u>\$6,582,543.5</u>	<u>\$6,582,543.5</u>	<u>\$0.0</u>	<u>\$3,489,724.2</u>	<u>\$3,489,724.2</u>	<u>\$0.0</u>
General State Aid	\$4,590,259.9	\$4,590,259.9	\$0.0	\$2,502,850.5	\$2,502,850.5	\$0.0
General State Aid/Hold Harmless	\$26,106.4	\$26,106.4	\$0.0	\$26,106.4	\$26,106.4	\$0.0
Charter Schools - Transition Impact Aid	\$3,421.5	\$3,421.5	\$0.0	\$1,711.7	\$1,711.7	\$0.0
District Consolidation Cost	\$7,850.0	\$7,850.0	\$0.0	\$5,475.3	\$5,475.3	\$0.0
Fast Growth Grants	\$7,500.0	\$7,500.0	\$0.0	\$7,500.0	\$7,500.0	\$0.0
Gifted Education	\$7,000.0	\$7,000.0	\$0.0	\$0.0	\$0.0	\$0.0
Homeless Education	\$3,000.0	\$3,000.0	\$0.0	\$0.0	\$0.0	\$0.0
School Breakfast Incentive Program	\$723.5	\$723.5	\$0.0	\$138.8	\$138.8	\$0.0
School Safety & Education Block Grant (ADA)	\$74,841.0	\$74,841.0	\$0.0	\$37,428.1	\$37,428.1	\$0.0
Transition Assistance	\$36,763.6	\$36,763.6	\$0.0	\$0.0	\$0.0	\$0.0
Textbook Loan Program	\$42,826.5	\$42,826.5	\$0.0	\$0.0	\$0.0	\$0.0
Mandated Categoricals	<u>\$1,782,251.1</u>	<u>\$1,782,251.1</u>	<u>\$0.0</u>	<u>\$908,513.4</u>	<u>\$908,513.4</u>	<u>\$0.0</u>
Illinois Free Lunch/Breakfast	\$26,300.0	\$26,300.0	\$0.0	\$18,915.0	\$18,915.0	\$0.0
Orphanage Tuition 18-3 (Reg Ed)	\$11,600.0	\$11,600.0	\$0.0	\$6,365.4	\$6,365.4	\$0.0
Sp-Ed - Extraordinary Services	\$331,051.1	\$331,051.1	\$0.0	\$131,305.5	\$131,305.5	\$0.0
Sp-Ed - Orphanage Tuition 14-7.03	\$101,800.0	\$101,800.0	\$0.0	\$69,511.4	\$69,511.4	\$0.0
Sp-Ed - Personnel Reimbursement	\$426,100.0	\$426,100.0	\$0.0	\$253,742.5	\$253,742.5	\$0.0
Sp-Ed - Private Tuition	\$151,600.0	\$151,600.0	\$0.0	\$112,258.6	\$112,258.6	\$0.0
Sp-Ed - Summer School	\$11,000.0	\$11,000.0	\$0.0	\$10,854.4	\$10,854.4	\$0.0
Sp-Ed - Transportation	\$383,300.0	\$383,300.0	\$0.0	\$132,813.4	\$132,813.4	\$0.0
Transportation - Regular/Vocational	\$339,500.0	\$339,500.0	\$0.0	\$172,747.2	\$172,747.2	\$0.0
Standards - Assessment & Accountability	<u>\$36,324.7</u>	<u>\$3,042.7</u>	<u>\$33,282.0</u>	<u>\$9,141.8</u>	<u>\$1,541.0</u>	<u>\$7,600.8</u>
Assessments	\$29,982.0	\$0.0	\$29,982.0	\$7,333.0	\$0.0	\$7,333.0
Growth Model	\$3,000.0	\$0.0	\$3,000.0	\$267.5	\$0.0	\$267.5
System of Support	\$3,342.7	\$3,042.7	\$300.0	\$1,541.2	\$1,541.0	\$0.2
Ensuring Quality Ed Personnel	<u>\$33,670.0</u>	<u>\$30,771.6</u>	<u>\$2,898.4</u>	<u>\$5,030.1</u>	<u>\$3,992.0</u>	<u>\$1,038.1</u>
Grow Your Own Teachers	\$3,500.0	\$3,031.2	\$468.8	\$1,471.6	\$1,239.2	\$232.5
National Board Certification	\$11,485.0	\$11,485.0	\$0.0	\$0.0	\$0.0	\$0.0
Principal Mentoring Program	\$3,100.0	\$1,291.6	\$1,808.4	\$600.0	\$0.0	\$600.0

Initiatives	Appropriation			YTD Expenditures		
	Total	Grants	Admin	Total	Grants	Admin
Chicago Principals and Admin Association	\$1,000.0	\$1,000.0	\$0.0	\$0.0	\$0.0	\$0.0
Teach for America	\$450.0	\$450.0	\$0.0	\$0.0	\$0.0	\$0.0
Teacher and Admin. Mentoring Program	\$14,000.0	\$13,378.8	\$621.2	\$2,919.9	\$2,714.2	\$205.6
Teacher of the Year	\$135.0	\$135.0	\$0.0	\$38.6	\$38.6	\$0.0
Reading Improvement Block Grant	<u>\$76,139.8</u>	<u>\$76,139.8</u>	<u>\$0.0</u>	<u>\$47,630.7</u>	<u>\$47,630.7</u>	<u>\$0.0</u>
Early Childhood	<u>\$380,261.4</u>	<u>\$376,324.5</u>	<u>\$3,936.9</u>	<u>\$179,480.0</u>	<u>\$177,832.0</u>	<u>\$1,648.1</u>
Academic Difficulty	<u>\$136,503.7</u>	<u>\$136,503.7</u>	<u>\$0.0</u>	<u>\$87,610.4</u>	<u>\$87,610.4</u>	<u>\$0.0</u>
Alternative Learning/Regional Safe Schools	\$18,535.5	\$18,535.5	\$0.0	\$8,250.9	\$8,250.9	\$0.0
Bilingual Education	\$75,652.0	\$75,652.0	\$0.0	\$48,417.3	\$48,417.3	\$0.0
Extended Learning Op (Summer Bridges)	\$22,238.1	\$22,238.1	\$0.0	\$16,281.4	\$16,281.4	\$0.0
Truant Alternative Optional Education	\$20,078.1	\$20,078.1	\$0.0	\$14,660.9	\$14,660.9	\$0.0
Learning Technologies	<u>\$4,169.7</u>	<u>\$2,719.7</u>	<u>\$1,450.0</u>	<u>\$2,346.1</u>	<u>\$1,351.1</u>	<u>\$995.0</u>
Technology for Success	\$4,169.7	\$2,719.7	\$1,450.0	\$2,346.1	\$1,351.1	\$995.0
School Infrastructure	<u>\$100.0</u>	<u>\$0.0</u>	<u>\$100.0</u>	<u>\$100.0</u>	<u>\$0.0</u>	<u>\$100.0</u>
Temporary Relocation Expense Fund Deposit	\$100.0	\$0.0	\$100.0	\$100.0	\$0.0	\$100.0
Career Preparation	<u>\$46,073.2</u>	<u>\$46,073.2</u>	<u>\$0.0</u>	<u>\$31,969.5</u>	<u>\$31,969.5</u>	<u>\$0.0</u>
Agricultural Education	\$3,381.2	\$3,381.2	\$0.0	\$2,334.9	\$2,334.9	\$0.0
Career and Technical Education	\$38,562.1	\$38,562.1	\$0.0	\$26,893.0	\$26,893.0	\$0.0
Illinois Governmental Internship Program	\$129.9	\$129.9	\$0.0	\$75.0	\$75.0	\$0.0
Jobs for Illinois Graduates	\$4,000.0	\$4,000.0	\$0.0	\$2,666.7	\$2,666.7	\$0.0
Regional Services	<u>\$16,090.0</u>	<u>\$16,090.0</u>	<u>\$0.0</u>	<u>\$10,229.8</u>	<u>\$10,229.8</u>	<u>\$0.0</u>
Regional Superintendent Initiatives	\$500.0	\$500.0	\$0.0	\$316.7	\$316.7	\$0.0
ROE - Bus Driver Training	\$70.0	\$70.0	\$0.0	\$70.0	\$70.0	\$0.0
ROE - Salaries	\$9,100.0	\$9,100.0	\$0.0	\$5,249.5	\$5,249.5	\$0.0
ROE - School Service	\$6,318.0	\$6,318.0	\$0.0	\$4,491.6	\$4,491.6	\$0.0
ROE - Supervisory Expenses	\$102.0	\$102.0	\$0.0	\$102.0	\$102.0	\$0.0
Strategic Plan	<u>\$500.0</u>	<u>\$0.0</u>	<u>\$500.0</u>	<u>\$186.2</u>	<u>\$0.0</u>	<u>\$186.2</u>
Strategic Plan	\$500.0	\$0.0	\$500.0	\$186.2	\$0.0	\$186.2
Administration	<u>\$24,250.5</u>	<u>\$0.0</u>	<u>\$24,250.5</u>	<u>\$15,113.0</u>	<u>\$0.0</u>	<u>\$15,113.0</u>
Targeted Initiatives	<u>\$73,657.7</u>	<u>\$72,192.9</u>	<u>\$1,464.8</u>	<u>\$32,367.9</u>	<u>\$31,988.6</u>	<u>\$379.3</u>
Adler Planetarium	\$200.0	\$200.0	\$0.0	\$0.0	\$0.0	\$0.0

Initiatives	Appropriation			YTD Expenditures		
	Total	Grants	Admin	Total	Grants	Admin
Advanced Placement Classes	\$1,646.9	\$1,635.3	\$11.6	\$989.4	\$989.4	\$0.0
Aerospace Education Initiative - Chicago	\$920.0	\$920.0	\$0.0	\$758.0	\$758.0	\$0.0
After School Programs	\$9,700.0	\$9,700.0	\$0.0	\$817.1	\$817.1	\$0.0
After School Matters	\$500.0	\$500.0	\$0.0	\$0.0	\$0.0	\$0.0
Agudath Israel of America-Sch. Transportation	\$1,200.0	\$1,200.0	\$0.0	\$763.6	\$763.6	\$0.0
Arts and Foreign Language	\$4,000.0	\$4,000.0	\$0.0	\$1,134.2	\$1,134.2	\$0.0
Autism Project	\$100.0	\$100.0	\$0.0	\$66.7	\$66.7	\$0.0
Blind & Dyslexic	\$1,218.8	\$1,218.8	\$0.0	\$1,018.0	\$1,018.0	\$0.0
Children's Mental Health Partnership	\$3,000.0	\$2,496.8	\$503.2	\$552.3	\$485.6	\$66.7
Class Size Reduction Pilot Project	\$8,000.0	\$8,000.0	\$0.0	\$3,016.0	\$3,016.0	\$0.0
Classroom Cubed	\$2,000.0	\$2,000.0	\$0.0	\$869.5	\$869.5	\$0.0
Community Residential Services Authority	\$575.0	\$0.0	\$575.0	\$309.0	\$0.0	\$309.0
Educator Midsconduct Investigations	\$375.0	\$0.0	\$375.0	\$3.6	\$0.0	\$3.6
Hard to Staff Schools Incentives	\$3,000.0	\$3,000.0	\$0.0	\$0.0	\$0.0	\$0.0
Healthy Kids/Healthy Minds - Chicago	\$3,000.0	\$3,000.0	\$0.0	\$1,500.0	\$1,500.0	\$0.0
Healthy Kids/Healthy Minds - Cicero & Berwy	\$1,000.0	\$1,000.0	\$0.0	\$0.0	\$0.0	\$0.0
Illinois Economic Education	\$250.0	\$250.0	\$0.0	\$0.0	\$0.0	\$0.0
Materials Center for the Visually Impaired	\$2,121.0	\$2,121.0	\$0.0	\$1,375.0	\$1,375.0	\$0.0
Metro East Consortium for Child Advocacy	\$217.1	\$217.1	\$0.0	\$130.3	\$130.3	\$0.0
Minority Transition Program	\$578.8	\$578.8	\$0.0	\$356.8	\$356.8	\$0.0
Museum of Science and Industry	\$200.0	\$200.0	\$0.0	\$0.0	\$0.0	\$0.0
Parental Participation Pilot Project	\$100.0	\$100.0	\$0.0	\$73.8	\$73.8	\$0.0
Philip J. Rock Center & School	\$3,577.8	\$3,577.8	\$0.0	\$2,327.5	\$2,327.5	\$0.0
Re-Enrolling Students Program	\$4,000.0	\$4,000.0	\$0.0	\$2,760.0	\$2,760.0	\$0.0
Response to Intervention	\$2,000.0	\$2,000.0	\$0.0	\$0.0	\$0.0	\$0.0
Rural Technology Initiative	\$4,000.0	\$4,000.0	\$0.0	\$0.0	\$0.0	\$0.0
Targeted Interventions	\$4,000.0	\$4,000.0	\$0.0	\$1,386.2	\$1,386.2	\$0.0
Tax Equivalent Grants	\$222.6	\$222.6	\$0.0	\$222.6	\$222.6	\$0.0
Transportation Reimbursement to Parents	\$11,954.7	\$11,954.7	\$0.0	\$11,938.4	\$11,938.4	\$0.0
Reappropriations	<u>\$40,070.5</u>	<u>\$39,636.5</u>	<u>\$434.0</u>	<u>\$37,627.0</u>	<u>\$37,359.7</u>	<u>\$267.4</u>
Textbook Loan Reappropriation	\$40,070.5	\$39,636.5	\$434.0	\$37,627.0	\$37,359.7	\$267.4
NON STATE						
School Infrastructure Fund	<u>\$113.0</u>	<u>\$0.0</u>	<u>\$113.0</u>	<u>\$59.1</u>	<u>\$0.0</u>	<u>\$59.1</u>
School Infrastructure (Debt Admin)	\$113.0	\$0.0	\$113.0	\$59.1	\$0.0	\$59.1

Initiatives	Appropriation			YTD Expenditures		
	Total	Grants	Admin	Total	Grants	Admin
Driver Education	<u>\$18,010.4</u>	<u>\$17,929.6</u>	<u>\$80.8</u>	<u>\$9,005.7</u>	<u>\$8,963.1</u>	<u>\$42.6</u>
Other Funds	<u>\$25,528.9</u>	<u>\$7,420.0</u>	<u>\$18,108.9</u>	<u>\$2,828.8</u>	<u>\$268.0</u>	<u>\$2,560.7</u>
Charter Schools Revolving Loan Fund	\$20.0	\$20.0	\$0.0	\$0.0	\$0.0	\$0.0
Emergency Financial Assistance Fund	\$1,000.0	\$1,000.0	\$0.0	\$0.0	\$0.0	\$0.0
Indirect Costs	\$7,015.2	\$0.0	\$7,015.2	\$1,701.4	\$0.0	\$1,701.4
ISBE Special Purpose Trust Fund	\$8,484.8	\$0.0	\$8,484.8	\$5.7	\$0.0	\$5.7
ISBE Teacher Certificate Institute Fund	\$1,008.9	\$0.0	\$1,008.9	\$166.5	\$0.0	\$166.5
School Technology Revolving Loan	\$5,000.0	\$5,000.0	\$0.0	\$13.0	\$13.0	\$0.0
Teacher Certification Fee Revolving Fund	\$1,600.0	\$0.0	\$1,600.0	\$687.2	\$0.0	\$687.2
Temporary Relocation Revolving Fund	\$1,400.0	\$1,400.0	\$0.0	\$255.1	\$255.1	\$0.0

FEDERAL

Federal Funds	<u>\$2,295,036.9</u>	<u>\$2,224,431.8</u>	<u>\$70,605.1</u>	<u>\$839,922.9</u>	<u>\$820,491.1</u>	<u>\$19,431.8</u>
Advanced Placement Fee Payment	\$2,144.0	\$2,000.0	\$144.0	\$489.9	\$489.9	\$0.0
Career & Technical Education	\$56,254.7	\$55,000.0	\$1,254.7	\$25,035.0	\$24,564.9	\$470.1
Career & Technical Education - Technical Prep	\$5,231.5	\$5,000.0	\$231.5	\$2,150.1	\$2,066.2	\$83.9
Charter Schools	\$6,213.0	\$6,000.0	\$213.0	\$234.3	\$232.7	\$1.6
Child Nutrition	\$534,075.8	\$525,000.0	\$9,075.8	\$255,181.3	\$251,189.6	\$3,991.7
Illinois Purchase Care Review Board	\$280.5	\$0.0	\$280.5	\$175.2	\$0.0	\$175.2
Individuals with Disabilities Educ. Act, Pt. B	\$581,892.5	\$570,000.0	\$11,892.5	\$267,981.0	\$263,448.7	\$4,532.3
IDEA - Deaf Blind, Part C	\$450.0	\$450.0	\$0.0	\$167.6	\$167.6	\$0.0
IDEA - Improvement Plan	\$2,730.3	\$2,500.0	\$230.3	\$825.6	\$811.9	\$13.7
IDEA - Model Outreach	\$400.0	\$400.0	\$0.0	\$0.0	\$0.0	\$0.0
IDEA - Pre-School	\$25,728.4	\$25,000.0	\$728.4	\$9,129.7	\$8,859.7	\$270.1
Learn and Serve America	\$2,552.0	\$2,500.0	\$52.0	\$375.6	\$337.6	\$38.0
Math & Science Partnerships	\$9,385.0	\$9,000.0	\$385.0	\$1,619.0	\$1,538.5	\$80.5
Integration of Schools & Mental Health System	\$400.0	\$166.3	\$233.7	\$86.1	\$25.8	\$60.3
National Center for Education Statistics	\$204.0	\$0.0	\$204.0	\$80.6	\$0.0	\$80.6
ONPAR	\$2,000.0	\$800.0	\$1,200.0	\$129.7	\$129.7	\$0.0
Refugee	\$2,001.0	\$2,000.0	\$1.0	\$0.0	\$0.0	\$0.0
School Health Programs	\$1,039.9	\$0.0	\$1,039.9	\$85.3	\$0.0	\$85.3
Title I - Basic Programs	\$641,409.9	\$634,905.0	\$6,504.9	\$176,970.7	\$174,390.9	\$2,579.9
Title I - Comprehensive School Reform	\$65.9	\$0.0	\$65.9	\$0.0	\$0.0	\$0.0
Title I - Education of Migratory Children	\$4,797.3	\$4,695.0	\$102.3	\$518.0	\$498.3	\$19.7
Title I - Even Start Family Literacy Programs	\$4,826.6	\$4,500.0	\$326.6	\$1,588.9	\$1,493.9	\$95.0
Title I - Neglected and Delinquent	\$1,436.5	\$1,400.0	\$36.5	\$609.5	\$609.5	\$0.0

Initiatives	Appropriation			YTD Expenditures		
	Total	Grants	Admin	Total	Grants	Admin
Title I - Reading First	\$62,912.7	\$60,000.0	\$2,912.7	\$17,331.2	\$16,797.5	\$533.7
Title I - School Improvement	\$30,869.2	\$29,500.0	\$1,369.2	\$12,061.5	\$11,674.3	\$387.2
Title II - Enhance Ed through Technology	\$20,849.0	\$20,000.0	\$849.0	\$5,687.2	\$5,530.1	\$157.1
Title II - Quality Teachers	\$137,871.8	\$135,000.0	\$2,871.8	\$30,502.8	\$29,899.8	\$603.1
Title III - English Language Acquisition	\$41,811.5	\$40,000.0	\$1,811.5	\$4,235.1	\$3,881.1	\$354.0
Title IV - 21st Century Schools	\$56,586.3	\$55,000.0	\$1,586.3	\$16,479.3	\$15,836.9	\$642.4
Title IV - Safe & Drug Free Schools	\$15,348.2	\$15,000.0	\$348.2	\$3,647.8	\$3,503.8	\$144.0
Title V - Innovative Programs	\$8,280.7	\$8,000.0	\$280.7	\$85.9	\$85.9	\$0.0
Title VI - Rural & Low Income Programs	\$1,552.0	\$1,500.0	\$52.0	\$317.1	\$317.1	\$0.0
Title VI - State Assessment	\$23,780.3	\$0.0	\$23,780.3	\$3,925.3	\$0.0	\$3,925.3
Title X - McKinney Homeless Assistance	\$3,519.7	\$3,250.0	\$269.7	\$1,744.5	\$1,688.3	\$56.3
Transition to Teaching	\$1,136.8	\$1,000.0	\$136.8	\$437.2	\$386.2	\$51.0
Special Congressional Initiatives	\$5,000.0	\$4,865.5	\$134.5	\$34.7	\$34.7	\$0.0
TOTAL - ALL FUNDS:	\$9,789,043.9	\$9,631,819.4	\$157,224.5	\$4,800,373.3	\$4,750,951.3	\$49,422.0

**ILLINOIS STATE BOARD OF EDUCATION
FINANCIAL STATUS REPORT - 07/01/08 THROUGH 1/31/09**

	<u>Approp Amount</u>	<u>Expended Year to Date</u>	<u>% Spent Year to Date</u>	<u>January Expenditures</u>	<u>Description</u>
Personal Services and Related	45,782.6	24,299.7	53.1%	3,507.2	Salaries & Benefits
Contractual Services	104,921.2	23,691.4	22.6%	6,189.1	Agency Contracts (see below); Non-Employee Travel; Conferences; Registration Fees
Travel	2,254.2	648.3	28.8%	118.7	Staff Travel
Commodities	741.8	95.8	12.9%	20.1	Supplies; Books
Printing	918.3	38.0	4.1%	1.8	Agency Printing
Equipment	886.8	59.1	6.7%	3.0	Computers; Printers; Furniture
Telecommunications	1,145.9	208.7	18.2%	50.2	Telecommunications Expenses
Auto Operations	20.0	8.0	40.1%	1.4	Operation of Agency Autos
Prompt Payment Act	437.4	267.4	61.1%	173.9	Prompt Payment
Refunds	5.7	5.7	100.0%	0.0	Refunds
Temp. Relocation Revolving Fund	100.0	100.0	100.0%	0.0	Interfund Cash Transfer
Grants	9,631,829.9	4,750,951.3	49.3%	754,986.6	See Detail Below

	<u>Funded Amount</u>	<u>Expended Year to Date</u>	<u>% Spent Year to Date</u>	<u>January Expenditures</u>	<u>Description</u>
Agency Contracts Breakdown:					
<u>State Superintendent</u>					
John Perkins					School District Liaison
GRF	79.0	43.1	54.6%	6.1	
University of Illinois					Services of Susie Morrison to assist with Board priorities; serve on senior leadership team, etc.
GRF	133.1	66.5	50.0%	22.2	
<u>Human Resources</u>					
Bell, Boyd and Lloyd					Arbitration matters
GRF	75.0	33.6	44.8%	10.3	
Other State	75.0	0.0	0.0%	0.0	
<u>Administrative Services</u>					
Xerox Corp					Copier Maintenance Repairs
GRF	85.0	85.0	100.0%	3.1	
Other State	100.0	16.9	16.9%	5.5	
Alzina					Building lease in Springfield
GRF	1,447.5	1,447.5	100.0%	0.0	
Other State	350.0	350.0	100.0%	0.0	
Federal	833.5	833.5	100.0%	0.0	
Facilities Management					Rent for Chicago Office, Thompson Center
GRF	89.0	88.9	99.9%	0.0	
Other State	13.4	0.0	0.0%	0.0	
Federal	161.3	42.9	26.6%	22.0	
<u>General Counsel/Legal</u>					
42 Impartial Hearing Officers					Teacher Dismissal Hearing Officers
GRF	168.0	9.0	5.4%	1.1	

	<u>Funded Amount</u>	<u>Expended Year to Date</u>	<u>% Spent Year to Date</u>	<u>January Expenditures</u>	<u>Description</u>
Franczek, Sullivan PC					Attorney General's Office appointed Res Vazquez to continue as Legal Counsel for the ongoing implementation and monitoring of the Corey H. consent decree
GRF	120.0	77.2	64.3%	10.6	
Kubiesa, Spiroff, Gosselar, Acker & DeBlasio, P.C.					Assist in recovery of Grant funds from West Harvey-Dixmoor SD #147 and represent ISBE with other cases as assigned.
GRF	50.0	49.7	99.4%	0.7	
Other State	50.0	28.5	57.0%	28.5	
Shefsky & Froelich LTD					Prosecution of Educator misconduct cases and any other cases ISBE may request
GRF	100.0	3.6	3.6%	0.0	
<u>Data Systems</u>					
IBM					Development of Statewide Student Information System
GRF	1,910.5	1,150.0	60.2%	327.5	
Federal	1,459.5	575.0	39.4%	0.0	
Utilistar					Data analysis and reporting for Supplemental Education Services
Federal	50.0	20.7	41.4%	11.0	
Ashbaugh & Associates					Programmer for CERTS System to merge into TCIS/OTIS
Other State	71.9	65.5	91.1%	11.5	
Ashbaugh & Associates					Two programmers for Child Nutrition System - MY08211
Federal	174.9	101.9	58.3%	24.8	
Ashbaugh & Associates					Two programmers for Child Nutrition System/ACES - 187
Federal	307.5	143.6	46.7%	27.9	
Capitol Strategies					Programmer for Child Nutrition/ ACES - MY07211
Federal	163.6	71.8	43.9%	12.2	
Capitol Strategies					Programmer for Entity System - MY07212
GRF	150.8	72.3	47.9%	20.1	
Capitol Strategies					Programmer for Child Nutrition System - MY08212
Federal	291.2	150.9	51.8%	30.0	
Ashbaugh & Associates					Programmer for Teacher Certification Information System and Educator Certification System
Other State	74.4	5.4	7.3%	5.4	
<u>Curriculum & Instruction</u>					
IL Caucus for Adolescent Health					HIV Prevention Education
Federal	50.0	0.0	0.0%	0.0	
Children's Memorial Hospital					2009 Youth Risk Behavior Survey
Federal	80.0	0.0	0.0%	0.0	
Linda Rakers					Budget manager for four federal programs
Federal	60.0	14.4	24.0%	2.6	
MGT of America, Inc.					Reading First Statewide Evaluation
Federal	271.1	135.6	50.0%	45.2	
The Center: Resources for Teaching and					Learn and Serve America Program
Federal	111.0	24.2	21.8%	0.0	
Elizabeth Oyer					Evaluation and Research of Illinois Math & Science Partnerships Program
Federal	68.8	0.0	0.0%	0.0	
Sangamon County ROE					Statewide Education Initiatives (Lieberman)
Federal	53.0	26.5	50.0%	13.9	
IL Math & Science Academy					Act as fiscal agent for ISBE for the Illinois Virtual High School (IVHS) Program
GRF	1,250.0	995.0	79.6%	20.0	
<u>Early Childhood</u>					
Henderson Mercer Warren -ROE 27					Third party monitoring of Early Childhood Block Grant Programs
GRF	700.0	280.0	40.0%	0.0	
Erikson Institute					Early Childhood Social and Emotional Consultation
GRF	1,120.0	250.0	22.3%	0.0	

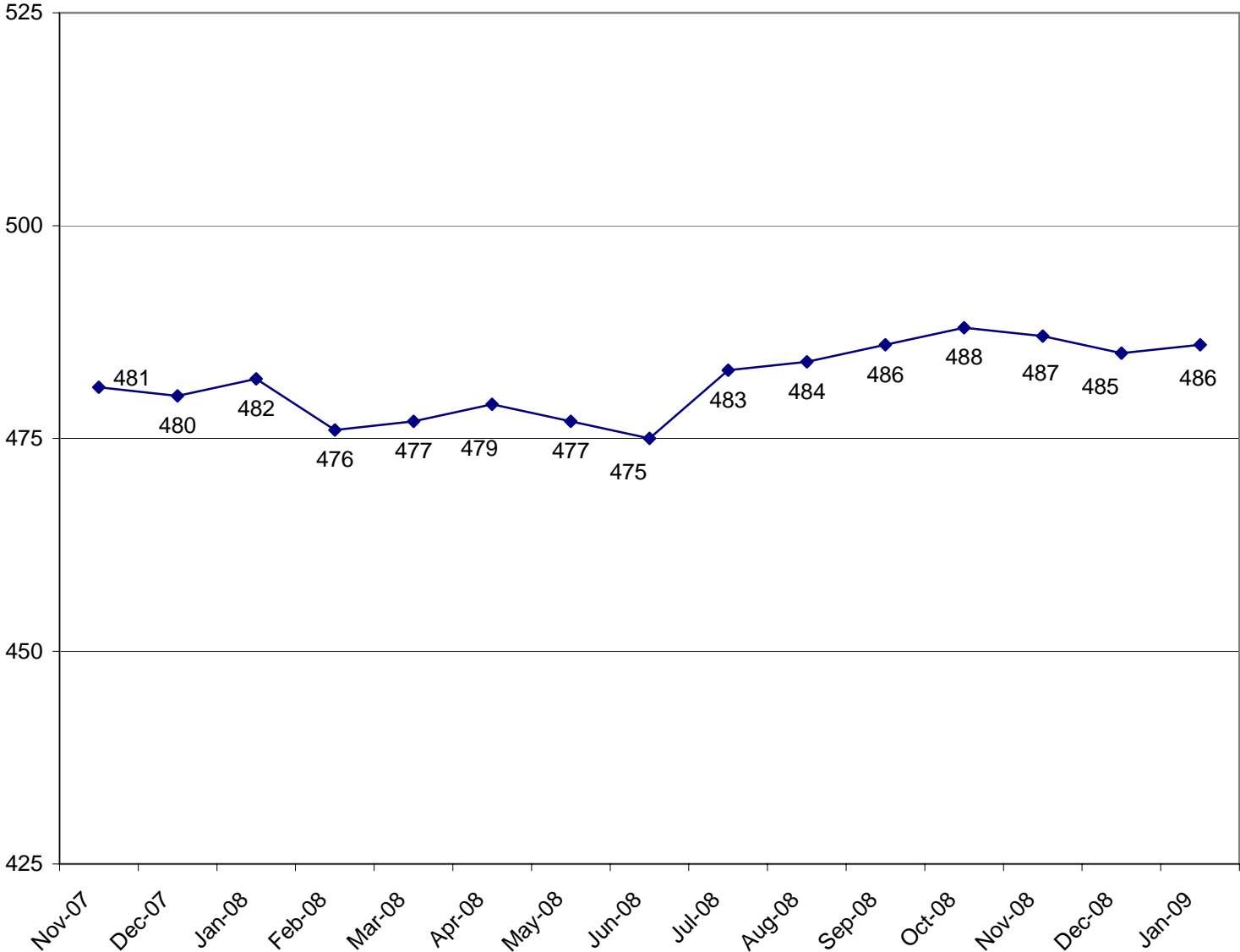
	<u>Funded Amount</u>	<u>Expended Year to Date</u>	<u>% Spent Year to Date</u>	<u>January Expenditures</u>	<u>Description</u>
Erikson Institute GRF	1,120.0	705.0	62.9%	207.5	Early Childhood Evaluation
<u>English Language Learning</u>					
Illinois Migrant Council Federal	99.8	88.4	88.6%	0.0	Support and technical assistance to the Migrant Education Program - contract ends 8/31/08
Illinois Migrant Council Federal	354.2	128.3	36.2%	22.1	Support & technical assistance to the Migrant Education Program - contract began 9/1/08
<u>Special Education Services</u>					
15 Hearing Officers Federal	445.0	243.3	54.7%	70.8	Impartial Hearing Officers in the local-level due process hearing/Section 14-8.02 of the School Code
9 Mediation Agreements Federal	97.7	46.7	47.8%	7.7	IDEA mandates ISBE to offer mediation services
Hupp Information Technology Federal	331.4	133.7	40.3%	32.8	Customize the Special Ed Data Systems and add critical indicators for the mediation process
ROE # 20 Federal	735.0	457.5	62.2%	55.5	Harrisburg Project - Manage software by special education districts and co-ops
3 Corey H. CPS Monitors Federal	60.0	25.0	41.7%	6.6	Corey H. Settlement - CPS Monitors
Gail Imobersteg Federal	50.0	25.0	50.0%	4.2	Evaluation of Hearing Officers
Measurement Inc. Federal	61.0	20.3	33.3%	20.3	Parent Surveys - two cycles of surveys this fiscal year
Loyola University GRF	78.6	16.2	20.6%	8.9	Assist in implementation of evaluation of special education programs
Federal	40.6	40.6	100.0%	0.0	
<u>Grants & Programs</u>					
Education Innovations Federal	82.4	0.0	0.0%	0.0	Evaluation Model for SES Providers
Northern Illinois University Federal	165.7	53.8	32.5%	13.9	Comprehensive external evaluation of the 21st Century Program
Learning Point Associates Federal	500.0	124.9	25.0%	124.9	Statewide technical assistance and monitoring for the 21st Century Program
Measurement, Inc. Federal	89.9	22.0	24.5%	0.0	Evaluation Services for RESPROS
Academic Development, Inc. Federal	84.3	32.9	39.0%	8.2	Technical assistance to schools/districts in developing evaluations for the content and effectiveness of the parental involvement policy activities and programs for improving the academic quality of schools through the spread of internet technology.
<u>Assessment</u>					
Metri Tech, Inc. GRF	117.5	58.8	50.0%	0.0	Develop, administer, retrieve, analyze, and score the Consumer Ed Proficiency Test
Measurement Inc. GRF	200.9	0.0	0.0%	0.0	Writing component of ISAT
NCS Pearson (Harcourt) GRF	5,002.4	3,451.0	69.0%	639.8	Formerly Harcourt Contract - Enhanced Statewide Student Assessment System - MY05647

	<u>Funded Amount</u>	<u>Expended Year to Date</u>	<u>% Spent Year to Date</u>	<u>January Expenditures</u>	<u>Description</u>
University of Illinois					Assessment Evaluation
GRF	125.0	125.0	100.0%	62.5	
Federal	125.0	0.0	0.0%	0.0	
NCS Pearson, Inc.					IAA Test (MY066410)
Federal	2,896.7	731.5	25.3%	146.3	
Harte-Hanks					Third Party Oversight
GRF	150.0	133.6	89.1%	36.4	
Federal	100.0	33.0	33.0%	19.2	
Wisconsin University - WIDA Consortium					Title III Requirements for the ACCESS test (bilingual). Validated through comparative studies by WIDA Consortia
GRF	4,465.3	0.0	0.0%	0.0	
NCS Pearson, Inc.					Implement ISAT Test and State Assessment Accountability Requirements - MY07645
GRF	4,534.0	3,737.7	82.4%	1,045.9	
Federal	8,016.9	3,137.7	39.1%	0.0	
American College Testing					ACT Test - College Entrance Exam
GRF	5,121.9	0.0	0.0%	0.0	
Federal	4,110.0	0.0	0.0%	0.0	
<u>Educator Certification</u>					
Target Area Development Corp					Grow Your Own Initiative
GRF	350.0	175.0	50.0%	87.5	
Philliber Research Associates					Evaluation of Grow Your Own Initiative
GRF	118.2	57.0	48.2%	9.5	
<u>Educator and School Development</u>					
Illinois Principals Association					New Principals Mentoring Program
Other State	1,804.2	600.0	33.3%	300.0	
4 Hearing Officers					Certification revocation hearing officers
Other State	133.7	0.1	0.1%	0.0	
Iroquois-Kankakee County ROE					National Board of Professional Teaching Standards to serve schools outside City of Chicago - Component 2
Federal	239.0	69.5	29.1%	69.5	
Illinois State University					National Board of Professional Teaching Standards to serve schools outside City of Chicago - Component 1
Federal	680.4	110.0	16.2%	90.0	
University of Illinois					New Illinois Teacher Collaborative
GRF	520.6	205.6	39.5%	0.0	
<u>Standards & Assessments</u>					
Northern Illinois University					A "live data" website for an Illinois Interactive Report Card
GRF	539.1	486.0	90.2%	240.9	
Federal	458.7	0.0	0.0%	0.0	
<u>Fiscal and Procurement</u>					
Acculngua International					Translation of documents from English to other languages
GRF	66.5	8.0	12.0%	0.0	
Federal	54.0	3.1	5.7%	0.6	
<u>Funding & Disbursements</u>					
MTW Solutions, LLC					Develop mechanism to extract data from e-Grants System
GRF	30.7	2.9	9.4%	0.0	
Federal	19.3	3.0	15.5%	0.0	
<u>Nutrition Programs</u>					
Southern Illinois University					Evaluation and reviews for School Meals Initiative (SMI)
Federal	195.5	54.8	28.0%	19.3	

	<u>Funded Amount</u>	<u>Expended Year to Date</u>	<u>% Spent Year to Date</u>	<u>January Expenditures</u>	<u>Description</u>
Legal Resolve, Inc.					Administrative Hearing Officer for Child Care Food Program
Federal	100.0	34.4	34.4%	13.3	
Department of Public Health					Summer food inspections
Federal	75.0	75.0	100.0%	0.0	
Grants Breakdown:					
General State Aid	4,616,366.3	2,528,956.8	54.8%	416,071.3	Formula
Title I - Low Income	675,000.0	188,666.8	28.0%	82,270.1	Formula
IDEA	570,000.0	263,448.7	46.2%	82,302.3	Formula
Child Nutrition	525,000.0	251,189.6	47.8%	42,831.1	Formula - Reimbursement
Spec Ed Personnel	426,100.0	253,742.4	59.5%	25,931.9	Formula
Transportation Spec Ed	383,300.0	132,813.4	34.6%	0.0	Formula
Early Childhood Block	376,324.5	177,832.0	47.3%	38,474.6	Block grant for Pre-K, parent training and prevention initiative
Transportation Reg/Voc	339,500.0	172,747.2	50.9%	0.0	Formula
Spec Ed Extraordinary	331,051.1	131,305.5	39.7%	14,113.4	Mandated Categorical
Spec Ed Private Facility Tuition	151,600.0	112,258.6	74.0%	0.0	Formula
Title II - Quality Teachers	135,000.0	29,899.8	22.1%	7,045.9	Formula
Spec Ed Orphanage	101,800.0	69,511.4	68.3%	0.0	Formula
Reading Imp. Block Grant	76,139.8	47,630.7	62.6%	2,615.5	Formula
ADA Sch. Safety and Ed. Bl.	74,841.0	37,428.1	50.0%	0.0	Formula
Title I - Reading First	60,000.0	16,797.5	28.0%	1,509.7	Competitive and formula grants
Title IV - 21st Century	55,000.0	15,836.9	28.8%	3,098.8	Competitive
Voc Ed - Federal	55,000.0	24,564.9	44.7%	5,305.4	Formula and Competitive - to improve student academic and career skills
Textbook Program	42,826.5	0.0	0.0%	0.0	Payment for textbooks purchased during year
Bilingual Education - Chicago	41,500.0	41,500.0	100.0%	0.0	Chicago Block Grant
Title III - English Language Acq	40,000.0	3,881.1	9.7%	3,427.1	Grant
Textbook Loan - Reappropriation	39,636.5	37,359.7	94.3%	4,028.6	Payment for textbooks purchased during previous year
Vocational Education - State	38,562.1	26,893.0	69.7%	3,404.4	Formula
Transition Assistance	36,763.6	0.0	0.0%	0.0	Formula
Bilingual Education - Downstate	34,152.0	6,917.3	20.3%	4,559.2	Mandated Categorical
State Free Lunch and Breakfast	26,300.0	18,915.0	71.9%	1,029.7	Mandated Categorical - Reimbursement
Preschool - Spec Ed	25,000.0	8,859.7	35.4%	2,607.4	Formula - special education, 3-5 year-olds
Summer Bridges	22,238.1	16,281.4	73.2%	106.6	Grants to districts (based on ISAT reading scores)
Truant/Dropout/Optional Education	20,078.1	14,660.9	73.0%	1,345.9	Competitive - at-risk students/dropout prevention
Technology Literacy	20,000.0	5,530.1	27.7%	900.6	Competitive and non-competitive grants to school districts
Alternative Ed/Reg Safe Schools	18,535.5	8,250.9	44.5%	0.0	Formula
Driver Education	17,929.6	8,963.1	50.0%	0.0	Reimbursement
Title IV - Safe and Drug Free	15,000.0	3,503.8	23.4%	899.1	Formula
Teachers/Admin. Mentoring	13,378.8	2,714.2	20.3%	650.3	Grants
Parent/Guardian Transportation	11,954.7	11,938.4	99.9%	0.0	Formula based on appropriation level divided by eligible students
Orphanage Tuition	11,600.0	6,365.4	54.9%	0.0	Reimbursement to school districts for children residing in orphanages
Nat'l Board Certification	11,485.0	0.0	0.0%	0.0	Grants
Spec Ed Summer School	11,000.0	10,854.4	98.7%	0.0	Formula - Special ed students enrolled in summer sessions
After School Mentoring	9,700.0	817.1	8.4%	399.7	Grants
ROE Salaries	9,100.0	5,249.5	57.7%	742.3	Salaries for ROE's
Title II Math/Science Partnerships	9,000.0	1,538.5	17.1%	490.2	Formula
Class Size Reduction Pilot	8,000.0	3,016.0	37.7%	1,020.3	Grants for K-3
Title V - Innovative Programs	8,000.0	85.9	1.1%	13.8	Formula
Reorganization Incentive	7,850.0	5,475.3	69.7%	0.0	Grants to districts to encourage reorganization through consolidation/annexation
Fast Growth Grants	7,500.0	7,500.0	100.0%	0.0	Grants
Gifted Education	7,000.0	0.0	0.0%	0.0	Grants
ROE School Services	6,318.0	4,491.6	71.1%	150.0	Formula - ROE Operations
Charter Schools - Federal	6,000.0	232.7	3.9%	50.7	Competitive
Voc Ed - Federal Tech Prep	5,000.0	2,066.2	41.3%	80.2	Grants - assists students in achieving learning/occupational skills standards
School Tech. Rev. Loan	5,000.0	13.0	0.3%	0.0	Loans to schools to implement technology
Spec. Congressional Initiatives	4,865.5	34.7	0.7%	14.6	Grants
Rural Tech Initiatives	4,000.0	0.0	0.0%	0.0	Grants

	<u>Funded Amount</u>	<u>Expended Year to Date</u>	<u>% Spent Year to Date</u>	<u>January Expenditures</u>	<u>Description</u>
Targeted Interventions	4,000.0	1,386.2	34.7%	476.8	Grants
Re-Enrolling Student Program	4,000.0	2,760.0	0.0%	380.0	Grant to Alternative Schools Network
Jobs for IL Graduates	4,000.0	2,666.7	66.7%	511.0	Grants to formula reimbursement, work-based learning, jobs for IL graduates
Arts & Foreign Language	4,000.0	1,134.2	28.4%	970.7	Grants
Philip Rock Center	3,577.8	2,327.5	65.1%	250.0	Targeted Initiative
State Charter Schools	3,421.5	1,711.7	50.0%	0.0	Grants - Start-up funds
Agriculture Education	3,381.2	2,334.9	69.1%	413.7	Grants to school districts
McKinney Homeless Ed	3,250.0	1,688.3	51.9%	164.1	Competitive grants to school districts
Standards Assessment & Acct	3,042.7	1,541.0	50.6%	269.4	Grants for K-6 Arts, Learn Improve, Learning Standards, Student/Teacher Assessment
Grow Your Own Teachers	3,031.8	1,239.2	40.9%	367.4	Grants
Hard to Staff Schools	3,000.0	0.0	0.0%	0.0	Grants
Homeless Education State	3,000.0	0.0	0.0%	0.0	Grants
Healthy Kids/Minds/Exp Vision	3,000.0	1,500.0	50.0%	375.0	Grants
Technology for Success -State	2,719.7	1,351.1	49.7%	13.0	Grants
Learn & Serve America	2,500.0	337.6	13.5%	31.4	Competitive grants
IDEA Part D	2,500.0	811.9	32.5%	211.8	Reimbursement
Children's Mental Health Partner	2,496.8	485.6	19.4%	15.6	Grants
Mat'ls for the Visually Impaired	2,121.0	1,375.0	64.8%	100.0	Targeted Init. - with The Chicago Lighthouse for People who are Blind or Visually Impaired
Classroom Cubed	2,000.0	869.5	43.5%	869.5	Grant to Rock Island Milan School Dist 41.
Response to Intervention	2,000.0	0.0	0.0%	0.0	Grants
Refugee Children	2,000.0	0.0	0.0%	0.0	Grants
Advanced Placement Fee	2,000.0	489.9	24.5%	0.0	Fee reimbursement for Adv Placement Exam and Int'l Baccalaureate exam
Advanced Placement Classes	1,635.3	989.4	60.5%	161.7	Grants
Title VI-Flex. & Acct Rural Education	1,500.0	317.1	21.1%	214.1	Grants to school districts
Temporary Relocation	1,400.0	255.1	18.2%	71.6	Formula grants for school emergency relocation
Principal Mentoring Prgm Grants	1,291.6	0.0	0.0%	0.0	Grants
Recording - Blind and Dyslexic	1,218.8	1,018.0	83.5%	0.0	Grant to increase achievement of students with visual impairments
School Transportation	1,200.0	763.6	63.6%	109.1	Grants
Chicago Prin. & Admin Assoc.	1,000.0	0.0	0.0%	0.0	Grant to the Chicago Principals and Administrators Assoc.
Healthy Kids/Minds/Vision Cicero/Berwyn	1,000.0	0.0	0.0%	0.0	Grants
Emergency Financial Assistance	1,000.0	0.0	0.0%	0.0	Formula and loans to school districts
Transition to Teaching	1,000.0	386.2	38.6%	91.7	Grant to Illinois Resource Center
Aerospace Ed Initiative	920.0	758.0	82.4%	758.0	Grant to Chicago Aerospace States Association
ONPAR	800.0	129.7	16.2%	0.0	Grant
Illinois Breakfast Incentive	723.5	138.8	19.2%	77.3	Reimbursement and grant to public and private schools and child-care institutions
Minority Transition	578.8	356.8	61.6%	356.8	Grants - serves disadvantage students from selected Chicago HS and elem. schools
Regional Supt. Initiatives	500.0	316.7	63.3%	70.8	Targeted Initiatives - to St. Clair & Madison ROE's
After School Matters	500.0	0.0	0.0%	0.0	Grant to After School Matters
Teach America	450.0	0.0	0.0%	0.0	Grant for Teach for America
Deaf/Blind	450.0	167.6	37.2%	56.0	Grant to Philip J. Rock Center
IDEA Model Outreach	400.0	0.0	0.0%	0.0	Competitive
IL Economic Education	250.0	0.0	0.0%	0.0	Grant to IL Council on Economic Education
Tax Equivalent Grants	222.6	222.6	100.0%	0.0	Grant to Chaney-Monge School District
Metro East Consortium	217.1	130.3	60.0%	43.4	Grant to provide staff development to increase student achievement in MECCA
Adler Planetarium	200.0	0.0	0.0%	0.0	Grants
Museum of Science & Industry	200.0	0.0	0.0%	0.0	Grant
IL Teach Excellence-Teacher of the Year	135.0	38.6	28.6%	38.6	Grants for Teacher of the Year
IL Gov't Internship	129.9	75.0	57.7%	11.0	Targeted Initiative - Springfield School Dist. 186
Supervisory Expense	102.0	102.0	100.0%	0.0	Supervisory Expense
Parental Participation Pilot	100.0	73.8	73.8%	10.0	Grants
Autism Training & Tech Assist.	100.0	66.7	66.7%	11.1	Grants to the IL Autism Training & Tech Assistance Program
ROE Bus Driver Training	70.0	70.0	100.0%	0.0	ROE Bus Driver Training
Mental Health - Federal	25.8	25.8	100.0%	0.0	Grant
Charter Schools-Rev Loan Fund	20.0	0.0	0.0%	0.0	Other/Repayment of loans

**ILLINOIS STATE BOARD OF EDUCATION
HEADCOUNT AS OF JANUARY 2009**



*Headcount revised in April of FY07 and Oct. and Feb. of FY08

**ILLINOIS STATE BOARD OF EDUCATION
AGENCY STAFF DETAIL AS OF JANUARY 2009**

	Mgmt.	Prof.	Support	GRF	Non-GRF	Total
SUPERINTENDENT'S OFFICE						
State Superintendent	1	0	3	4	0	4
Board Services	0	1	1	2	0	2
General Counsel	2	10	2	14	0	14
Governmental Relations	0	2	0	1	1	2
Internal Audit	<u>1</u>	<u>2</u>	<u>1</u>	<u>2</u>	<u>2</u>	<u>4</u>
Sub-Total	4	15	7	23	3	26
HUMAN RESOURCES						
Human Resources	<u>4</u>	<u>3</u>	<u>7</u>	<u>12</u>	<u>2</u>	<u>14</u>
Sub-Total	4	3	7	12	2	14
PUBLIC INFORMATION						
Public Information	<u>1</u>	<u>6</u>	<u>1</u>	<u>7</u>	<u>1</u>	<u>8</u>
Sub-Total	1	6	1	7	1	8
SPECIAL EDUCATION SERVICES						
Special Education Admin.	1	0	1	0	2	2
Special Education Services - Spfld.	2	26	6	2	32	34
Special Education Services - Chgo.	<u>2</u>	<u>21</u>	<u>2</u>	<u>0</u>	<u>25</u>	<u>25</u>
Sub-Total	5	47	9	2	59	61
EDUCATIONAL PROGRAMS						
Career & Technical Education	1	8	2	5	6	11
Early Childhood	1	9	2	5	7	12
English Language Learning	1	8	1	5	5	10
Grants and Programs	<u>2</u>	<u>18</u>	<u>2</u>	<u>2</u>	<u>20</u>	<u>22</u>
Sub-Total	5	43	7	17	38	55
STANDARDS & ASSESSMENTS						
Standards & Assessment Admin.	1	1	1	2	1	3
Data Analysis & Progress Reporting	1	8	3	10	2	12
Assessment	2	13	2	5	12	17
Curriculum & Instruction	<u>2</u>	<u>14</u>	<u>3</u>	<u>8</u>	<u>11</u>	<u>19</u>
	6	36	9	25	26	51

	Mgmt.	Prof.	Support	GRF	Non-GRF	Total
SCHOOL SUPPORT SERVICES FOR ALL SCHOOLS						
School Support Admin	1	0	1	2	0	2
Educator Certification	1	9	12	9	13	22
Educator & School Development	2	18	9	20	9	29
Nutrition Programs	<u>2</u>	<u>36</u>	<u>6</u>	<u>3</u>	<u>41</u>	<u>44</u>
	6	63	28	34	63	97
FISCAL SUPPORT SERVICES						
Fiscal Support Services Admin.	1	0	0	1	0	1
Budget & Financial Management	0	7	1	7	1	8
Data Systems	3	29	2	20	14	34
Technology Support	1	18	3	15	7	22
Fiscal & Procurement	2	13	6	13	8	21
Administrative Services	2	3	13	13	5	18
Funding and Disbursements	2	20	10	16	16	32
School Business Services	1	13	2	15	1	16
External Assurance	<u>2</u>	<u>18</u>	<u>2</u>	<u>7</u>	<u>15</u>	<u>22</u>
Sub-Total	14	121	39	107	67	174
GRAND TOTAL, ALL CENTERS	45	334	107	227	259	486
	9%	69%	22%	47%	53%	100%

**ILLINOIS STATE BOARD OF EDUCATION
Personnel Transactions As of January 2009**

Transaction Data:

	<u>FY01</u>	<u>FY02</u>	<u>FY03</u>	<u>FY04</u>	<u>FY05</u>	<u>FY06</u>	<u>FY07</u>	<u>FY08</u>	<u>FY09</u>
Begin Year	787	739	650	522	471	487	478	463	475
Hire Externally	27	5	29	20	77	37	44	54	26
Recall	0	0	11	19	4	4	0	1	1
Retire	-35	-37	-128	-34	-30	-25	-20	-19	-5
Resign	-35	-21	-13	-24	-31	-17	-33	-19	-8
Discharge	-2	-9	-2	-2	-4	-7	-5	-4	-2
Layoff	0	-25	-22	-30	0	0	0	0	0
Death	-3	-2	-3	0	0	-1	-1	0	0
Other	<u>0</u>	<u>0</u>	<u>0</u>	<u>0</u>	<u>0</u>	<u>0</u>	<u>0</u>	<u>-1</u>	<u>-1</u>
End Year	739	650	522	471	487	478	463	475	486