

# ILLINOIS STATE BOARD OF EDUCATION

100 N. First Street  
Springfield, Illinois

June 17-18, 2009

**NOTE: Staff presentations and detailed Board discussion typically take place during Committee meetings one month prior to State Board action in the plenary session.**

All open meetings will be audio cast on the Internet at: [www.isbe.net](http://www.isbe.net)

## WEDNESDAY, JUNE 17, 2009

**10:30 a.m. Governmental Relations Committee of the Whole**  
Board Room, 4th Floor

**\*11:30 a.m. Education Policy Planning Committee of the Whole**  
Board Room, 4th Floor

**12:10 p.m. Break for Lunch**

**\*12:45 p.m. Finance & Audit Committee of the Whole (immediately following lunch)**  
Board Room, 4th Floor

\* The meeting will begin at the conclusion of the previous session.

## THURSDAY, JUNE 18, 2009

**8:30 a.m. Board Operations Committee of the Whole**  
Board Room, 4th Floor

**\*9:00 a.m. Ad Hoc Rules Committee of the Whole**  
Board Room, 4th Floor

**\*10:15 a.m. ISBE Plenary Session**  
Board Room, 4th Floor

\* The meeting will begin at the conclusion of the previous session.

All State Board of Education meetings listed on this agenda will be accessible to persons with disabilities. Persons planning to attend who need special accommodations should contact the Board office no later than the date prior to the meeting. Contact the Superintendent's office at the State Board of Education, Phone: 217-782-2221; TTY/TDD: 17-782-1900; Fax: 217-785-3972.

**NOTE:** Chairman Ruiz may call to order the Board's plenary session early for the sole purpose of hearing a motion to go into closed session. In such case, the plenary session will reconvene for action items at the time posted. Chairman Ruiz may also call for a break in the plenary session on Thursday at which time the Board will go into closed session.

**ILLINOIS STATE BOARD OF EDUCATION  
PLENARY SESSION  
Board Room, 4<sup>th</sup> Floor  
100 North First Street, Springfield, Illinois  
June 18, 2009  
10:15 a.m.**

(This meeting will begin immediately following the previous session.)

**NOTE: Staff presentations and detailed Board discussion typically take place during  
Committee meetings one month prior to State Board action in the plenary session.**

**All meetings will be audio cast on the Internet at [www.isbe.net](http://www.isbe.net)**

**A. Roll Call/Pledge of Allegiance**

1. Consideration of and Possible Actions on Any Requests for Participation in Meeting by Other Means

**B. Resolutions & Recognition 10:15 – 10:30 a.m.**

**C. Public Participation**

**10:30 – 11:00 a.m.**

**D. Superintendent's Report**

**\* Consent Agenda**

All action consideration items listed with an asterisk (\*) are considered to be routine and will be enacted in one motion and vote. Any board member who wishes separate discussion on any item listed on the consent agenda may remove that item from the consent agenda, in which event, the item will be considered in its normal sequence.

**Action Considerations**

consent agenda items: **11:00 – 11:10 a.m.**

- \*1. Approval of Minutes
  - a. April 15, 2009 CTE Work Study (*Plenary pp. 4-5*)
  - b. May 21, 2009 (*Plenary pp. 6-12*)
- \*2. Rules for Initial Review
  - a. Part 180 (Health/Life Safety Code for Public Schools) (*Rules Packet pp. 5-13*)
  - b. Part 252 (Driver Education) (*Rules Packet pp. 14-25*)
  - c. Part 120 (Pupil Transportation Reimbursement) (*Rules Packet pp. 26-36*)
  - d. Part 401 (Special Education Facilities Under Section 14-7.02 of the School Code) (*Rules Packet pp. 26-28; 37-39*)
  - e. Part 675 (Providers of Supplemental Educational Services) (*Rules Packet pp. 26-28;40-46*)
- \*3. Rules for Adoption
  - a. Part 405 (Payments to Certain Facilities Under Section 14-7.05 of the School Code) (*Rules pp. 47-64*)
  - b. Part 575 (School Technology Program) (*Rules Packet pp. 65-69*)
- \*4. Contracts & Grants Over \$1 Million
  - a. Illinois Interactive Report Card Contract Renewal (*Finance & Audit Packet pp. 4-5*)
  - b. ISAT development Contract Renewal (*Finance & Audit Packet pp. 6-7*)
  - c. ISAT administration Contract Renewal (*Finance & Audit Packet pp. 8-9*)
  - d. Shefsky and Froelich Contract Renewal (*Finance & Audit Packet pp. 10-12*)
  - e. School Improvement 1003g Grants (New & Continuing Grants) (*FAC Packet pp. 13-16*)
- \*5. NASBE and ECS Membership (*Board Operations Packet pp. 8-22*)
- \*6. Discussion of Teacher Certification Board Recommendations
  - a. Review of Unit Accreditation (*EPPC Packet pp. 5-7*)
    - 1) Lewis University
    - 2) Trinity International University
  - b. Review of Proposed New Programs (*EPPC Packet pp. 8-10*)
    - 1) Benedictine University
    - 2) University of Illinois at Chicago

**End of consent agenda**

7. Approval of Draft Strategic Plan Progress Report (materials to be inserted)
8. Appointee to the Department of Juvenile Justice Board of Education (*EPPC Packet pp.11-20*)
9. Approval of Proviso's Financial Plan (as needed) (*Finance & Audit Packet pp. 17-38*) **11:10 – 11:15 a.m.**
10. Closed Session Minutes (as needed, following closed session)
11. Approval of AFSCME Collective Bargaining Agreement (as needed following closed session)

**E. New Business**

**F. Announcements and Reports 11:15 – 11:55 a.m.**

- |   |                    |
|---|--------------------|
| 1. IBHE Liaison Report ( <i>Dr. Proshanta Nandi</i> ) | 11:15 – 11:25 a.m. |
| 2. Superintendent's Announcements                     | 11:25 – 11:35 a.m. |
| 3. Chairman's Report                                  | 11:35 – 11:45 a.m. |
| 4. Member Reports                                     | 11:45 – 11:55 a.m. |

**G. Information Items**

1. ISBE Fiscal & Administrative Monthly Reports (*Plenary pp. 13-41*)
2. Annual Report on the Status of Agency Rulemaking (*Rules Packet pp. 70-73*)

**H. Adjourn**

**NOTE:** Chairman Ruiz may call to order the Board's plenary session early for the sole purpose of hearing a motion to go into closed session. In such case, the plenary session will reconvene at the time announced. Chairman Ruiz may also call for a break in the plenary session at which time the Board will go into closed session.

# ILLINOIS STATE BOARD OF EDUCATION

## WORK STUDY: EDUCATION TO CAREERS

April 15, 2009

10:30 a.m.

Springfield, Illinois

### Members Present

Dr. Andrea Brown, Committee Member  
Dean Clark, Board Member  
Dr. David Fields, Committee Chair  
Dr. Vinni Hall, Committee Member  
Brenda Holmes, Board Member  
Joyce Karon, Committee Member  
Lanita Koster, Committee Member  
Jesse Ruiz, Board Member  
Chris Ward, Board Member

Christopher Koch  
Susie Morrison  
Linda Tomlinson  
Connie Wise  
Don Evans  
Darren Reisberg  
Matt Vanover  
Jean Ladage  
Marsha Moffett

### Staff Present

Mark Williams  
Dora Welker  
Scott Edgar  
Carol Brooks  
Annie Tillman  
Debbie Hopper  
Steve Parrott  
Shangte Shen  
Harley Hepner

### Others Present

Jay Runner, Coordinator for Facilitating Coordination in  
Agricultural Education (FCAE)  
Dr. Mary Waters, Southern Regional Education Service Agency  
Dan Pentony, Curriculum Revitalization Project  
Bill Ratzburg, District U-46 Career & Technical Education  
Coordinator  
Pat Hayes, District U-46  
Carol DePue, District U-46  
Tracey Jakaitis, District &-46

### Student Advisory Council Members

#### Present

Jeff Barnes  
Kelsea Bettefeld  
Sarah Chapman  
Laura Collins  
Skye David  
Brittany Kendrick  
Gabrielle Kendrick  
Ryan Ornstein  
Hanna Rhoades

Ms. Morrison publicly thanked Dr. Vinni Hall for requesting the work study on Career and Technical Education (CTE).

Mr. Williams provided a brief history and background of how Vocational Education evolved into what is now known as Career and Technical Education. Career and Technical Education students begin, in high school, pathways that arrive at high skill, high wage, or high demand careers. CTE provides the context for learning that helps students appreciate the reason for succeeding in rigorous academic and career courses.

The CTE division is an enthusiastic supporter of the agency's development of a longitudinal data system. The present CTE data system, the Illinois Student Information System, was a national leader at its inception, but the present priority of data-driven decisions requires more robust data collection and analysis tools.

Dan Pentony of the Curriculum Revitalization Project (a program funded by ISBE) made a presentation about the curriculum that is available on-line to students and teachers in the different areas of Career and Technical Education. This on-line system has lessons, presentation materials, and assessments that Illinois CTE teachers use to plan their classes and document the state and national standards that are being met, in an easy to use web-based format. The web interface allows monitoring of student progress and allows the collection of data that can be used to improve instruction and target student intervention.

Bill Ratzburg made a presentation concerning the National Career Readiness Certificate and its benefit for CTE students. Accompanied by Pat Hayes, Carol DePue and Tracey Jakaitis, he gave a brief overview of the basis of the certificate which allows employers to verify that the holder has the employability skills in Reading, Math and locating information. These certificate holders are more easily screened, hired and promoted into the workforce. He encouraged the Board to adopt the third component of WorkKeys statewide.

In closing, Mr. Williams thanked the Board for their longstanding support of Career and Technical Education as it relates to the concrete needs of the students of Illinois and hopes that the presentations gave them an insight in to the scope and breadth of programs provided in high schools around Illinois.

Board members praised staff for the information that was presented and were impressed with the efforts to bridge standards with career and technical education courses. The following requests for follow-up were received from Board members:

The Work Study Session adjourned at 12:30 p.m.

**Illinois State Board of Education Meeting**  
**May 21, 2009**  
**Illinois State Board of Education**  
**100 North First Street**  
**Springfield, Illinois**

**ROLL CALL/  
PLEDGE OF  
ALLEGIANCE**

Mr. Jesse Ruiz, Chairman, called the meeting to order at 9:55 a.m. Chairman Ruiz asked Ms. Jean Ladage, Assistant to the Board, to call the roll. A quorum was present. Dr. Christopher Koch, State Superintendent of Education, was also in attendance.

**Members Present:**

Mr. Jesse Ruiz, Chairman  
Dr. Christopher Ward, Vice Chairman  
Dr. Vinni Hall, Secretary  
Dr. Andrea Brown  
Mr. Dean Clark  
Dr. David Fields  
Ms. Joyce Karon  
Ms. Lanita Koster

**Members Absent:**

None

Chairman Ruiz noted that Board Member Brenda Holmes has decided to resign, but she will always be a part of the ISBE family; and that he will continue to look to her for guidance in the future. Chairman Ruiz thanked Brenda for her years of dedicated service to the board and the children of Illinois.

**RESOLUTIONS &  
RECOGNITION**

Dr. Ward moved that the State Board of Education adopt the resolution recognizing Ms. Glenna M. Bartell of Champaign County for her outstanding dedication to education, the Champaign-Ford Regional Board of Trustees and the children of the State of Illinois. Ms. Bartell was present at the meeting to receive her resolution.

Ms. Karon read the resolution of recognition honoring six students, Laine Hopkins, Precious Weatherall-Green, Samatha Carlson, Mick Hodge, Tashena Casey, and Breshauna Huff and their sponsor, Mrs. Shannon Olison. These six students in Ms. Olison's English Class at the R.E.A.D.Y. Program (ROE 9 Regional Safe School Program) formed a team to implement environmental measures in the school and community. Ms. Karon extended the Illinois State Board of Education's sincere appreciation and gratitude to the R.E.A.D.Y...Set....Green Team and its sponsor, Mrs. Shannon Olison, for their efforts to improve the environment in their school, the district and the community.

Dr. Fields read the resolution recognizing Ms. Patricia "Trish" Jackson, Superintendent of Metamora Grade School District #1 for her leadership and commitment to the field of education.

Dr. Fields seconded the motion and the resolutions were adopted.

**PUBLIC  
PARTICIPATION**

David Prasse of the Council of Chicago Area Deans and Loyola University Chicago spoke to the Board on the proposed changes to Part 25 Certification, Sections 25.25 and 25.37. Mr. Prasse stated these changes would require two additional courses, one in reading and one in special education as part of teacher preparation programs. Mr. Prasse indicated that increasing requirements by adding courses reverses the state and national professional direction, which bases program quality on meeting established standards, not completing required courses. He felt that the current standards and outcomes-based model for preparing professional educators has been embraced by ISBE and the professional education community.

Dr. Koch stated that during yesterday's committee meeting the Board heard testimony and discussed the course additions that would be required by higher education institutions. Staff are concerned about the need to address the deficiencies identified in the evaluation completed by Dan Reschly in 2008 on the implementation of the

transition rules under *Corey H.* Dr. Koch stated that he has decided he will modify his recommendation to the Board. He will request that the State Teacher Certification Board submit to the State Board of Education by September 1, 2009, recommendations for a standards-based outcome approach to the deficiencies identified in the teacher preparation study by Dan Reschly. The September 1, 2009 timeline will give ISBE staff an opportunity to review the recommendations. Dr. Koch thanked Drs. Prasse and Jackman for the work they are doing at Eastern and Loyola.

Dr. Diane Jackman, Dean of the College of Education and Professional Studies at Eastern Illinois University, spoke on behalf of the Illinois Association of Deans of Public Colleges of Education (IADPCE) and shared a resolution presented on behalf of the Illinois Association of Colleges of Teacher Education (IACTE). Dr. Jackman stated that they believed that the proposal to modify rules to add courses to teacher education programs is ill advised and flawed and asked that we take into strong consideration the recommendations of the State Teacher Certification Board. She thanked the Board for their time and willingness to listen.

Ellen Crowe spoke on behalf of the Illinois Association of Teacher Education in Private Colleges and Universities. Ms. Crowe stated private institutions would like to recommend that the courses in the proposed rules give the impression that one size fits all, and they would like to avoid that mindset.

Karel Ares, Executive Director of Prevention First, discussed the Student Assistance Center (SAP). The Student Assistance Center is a school-based, multi-disciplinary problem-solving team, designed as a three-tiered system of support for all students, not just those dealing with behavior issues or skills deficits. SAPs offer universal prevention strategies, early identification and intervention for students with social emotional, behavioral health and life needs that are affecting their school performance and healthy development. Ms. Ares noted that the cost to support programs like Prevention First have significantly increased and without the State Board's support the programs will either end their prevention services or carry on with weak programs that will have little impact. Ms. Ares closed by saying that Prevention First looks forward to ISBE's support to continue to serve in this important role for the State of Illinois.

**CONSENT  
AGENDA**

Chairman Ruiz stated that consent agenda items D.2.b. Part 24 (Standards For All Illinois Teachers) and D.2.c. Part 25 (Certification) have been removed from the consent agenda and will be considered as separate items for discussion.

**Motion:**

Mr. Clark moved that the State Board of Education approve the consent agenda items excluding agenda items D.2.b. Part 24 (Standards For All Illinois Teachers) and D.2.c. Part 25 (Certification) which have been pulled from the consent agenda items and will be discussed and considered separately. Dr. Hall seconded the motion and it passed with a roll call vote. Dr. Ward voted yes but abstained from the vote on agenda item D.8.a Teachers Certification Board Recommendations for the University of St. Francis.

The following motions were approved by action taken in the consent agenda motion.

**Approval of Minutes**

The State Board of Education hereby approves the minutes for the April 16, 2009 board meeting.

**Rules for Initial Review**

**Part 1 (Public School Evaluation, Recognition and Supervision)**

The State Board of Education hereby authorizes the solicitation of public comment on the proposed rulemaking for: Public School Evaluation, Recognition and Supervision (23 Illinois Administrative Code 1), including publication of the proposed amendments in the Illinois Register.

**Part 120 (Pupil Transportation Reimbursement)**

The State Board of Education hereby authorizes the solicitation of public comment on the proposed rulemaking for: Pupil Transportation Reimbursement (23 Illinois Administrative Code 120), including publication of the proposed amendments in the Illinois Register.

**Part 425**

**(Voluntary Registration and Recognition of Nonpublic Schools)**

The State Board of Education hereby authorizes the solicitation of public comment on the proposed rulemaking for: Voluntary Registration and Recognition of Nonpublic Schools (23 Illinois Administrative Code 425), including publication of the proposed amendments in the Illinois Register.

**Rules for Adoption**

**Part 140**

**(Calculation of Excess Cost Under Section 18-3 of the School Code)**

The State Board of Education hereby adopts the proposed rulemaking for: Calculation of Excess Cost Under Section 18-3 of the School Code (23 Illinois Administrative Code 140). Further, the Board authorizes the State Superintendent of Education to make such technical and nonsubstantive changes as the State Superintendent may deem necessary in response to suggestions or objections of the Joint Committee on Administrative Rules.

**Part 240 (Alternative Learning Opportunities Program)**

The State Board of Education hereby adopts the proposed rulemaking for: Alternative Learning Opportunities Program (23 Illinois Administrative Code 240). Further, the Board authorizes the State Superintendent of Education to make such technical and nonsubstantive changes as the State Superintendent may deem necessary in response to suggestions or objections of the Joint Committee on Administrative Rules.

**Contracts & Grants Over \$1 Million**

**Illinois New Principal Mentoring Program Contract Amendment**

The State Board of Education hereby authorizes Agency staff to increase the FY10 contract with the Illinois Principals Association in the amount of \$36,970 for a total of \$2,100,000 for the FY10 New Principal Mentoring Program. The total contract will not exceed \$6,146,926.

**ISU Contract: Component 1 of Illinois National Board Professional Preparation and Support System**

The State Board of Education hereby authorizes Agency Staff to renew the contract in FY10 for \$660,368 with the Illinois State University to administer Component 1 of the Illinois National Board Professional Preparation and Support System (subject to appropriation). The total contract will not exceed \$1,584,120.

**21<sup>st</sup> Century Community Learning Center Grants**

The State Board of Education hereby authorizes the State Superintendent to approve the 21<sup>st</sup> Century Community Learning Center grantees, and enter into any grant agreements exceeding \$1 million with any of these grantees in accordance with applicable Agency policies and procedures.

**Illinois Statewide Technical Assistance Center (ISTAC) Grant**

The State Board hereby approves the renewal of the ISTAC grant for a maximum amount of \$5,523,000 for Fiscal Year 2010, to provide a fully coordinated statewide approach to technical assistance and support for the implementation of best practices.

**Illinois Service Resource Center (ISRC) Discretionary Grant**

The State Board of Education hereby approves the renewal of the ISRC grant, thereby providing funding in the amount of \$477,000 for Fiscal Year 2010, for the enhancement of technical assistance and resources for parents and educators of students who have a

hearing loss and Behavior/Emotional Challenges.

#### **Accept FY08 Financial & Compliance Audit**

The State Board of Education hereby accepts the Auditor General's Illinois State Board of Education Financial Audit and Compliance Examination for the Year Ended June 30, 2008.

#### **Illinois Alternate Assessment (IAA) Performance Level Descriptors and Cut-Scores**

The State Board hereby adopts the IAA Performance Level Descriptors and the proposed raw score cut-scores to be used to develop the scale scores for the IAA.

#### **Race to the Top Funds: State Strategic Management of Human Capital**

The State Board of Education hereby authorizes the State Superintendent to collaborate with the Consortium for Policy Research in Education (CPRE) located at the Wisconsin Center for Education Research, along with Colorado, Indiana, North Carolina, Kentucky, Ohio, Minnesota and Florida to develop a proposal for "Race to the Top" stimulus funding for the Strategic Management of Human Capital as it relates to providing the best teachers and school leaders in schools to promote student learning and school improvement.

#### **Teacher Certification Board Recommendations**

##### **Rockford College**

The State Board of Education *provisionally approves* the **Reading Specialist** program for **Rockford College**, thereby authorizing the college to conduct the program and to recommend candidates for certification by entitlement until the time of the institution's next accreditation review.

##### **University of St. Francis**

The State Board of Education *provisionally approves* the **Visual Arts** program for the **University of St. Francis**, thereby authorizing the university to conduct the program and to recommend candidates for certification by entitlement until the time of the institution's next accreditation review.

##### **Western Illinois University**

The State Board of Education *provisionally approves* the **Technology Specialist** program for **Western Illinois University**, thereby authorizing the university to conduct the program and to recommend candidates for certification by entitlement until the time of the institution's next accreditation review.

##### **National Louis University - Alternative Certification Program**

The State Board of Education *provisionally approves* the **Learning Behavior Specialist I (LBS I) – Alternative Certification Program** for **National-Louis University**, thereby authorizing the university to conduct the program and to recommend candidates for certification by entitlement until the time of the institution's next accreditation review.

#### **NASBE Nominations**

With the greatest confidence, the members of Illinois State Board of Education endorse the nomination for Dr. Christopher J. Ward's continued service as a Central Area Director for the National Association of State Boards of Education.

#### **Bylaws Revision**

The State Board of Education hereby approves the deletion of Section VI.F. of the Bylaws of the State Board of Education.

**END OF THE CONSENT AGENDA**

**PART 24  
STANDARDS FOR  
ALL ILLINOIS  
TEACHERS**

*This item has been removed from the agenda.*

**PART 25  
CERTIFICATION**

Dr. Brown moved that the State Board of Education hereby authorizes the solicitation of public comment on the proposed rulemaking for Certification (23 Illinois Administrative Code 25), including publication of the proposed amendments in the Illinois Register, provided, however that the proposed rulemaking has been modified to remove the requirements in Section 25.25 and 25.37 for discrete courses on methods of teaching reading and the identification of student with disabilities.

Further, the State Board of Education requests the State Teacher Certification Board to submit to the State Board, by September 1, 2009, recommendations for a standards-based outcome approach to the deficiencies identified in the teacher preparation study by Dan Reschly, entitled "Evaluation of LBS-1 Teacher Preparation in Inclusive Practices, Reading and Classroom Organization-Behavior Management."

Dr. Hall seconded the motion and it passed with a unanimous voice vote.

**DELEGATION OF  
AUTHORITY FOR  
MANDATED  
REPORTS**

Ms. Karon moved that the State Board of Education shall review and discuss the reports as discussed in the May 2009 Board Operations Committee of the Whole, including High School Reform and Teacher Preparation & Mentoring Programs. The State Board of Education further directs the State Superintendent to, after each legislative session, provide the State Board with a list of all newly required reports. The Superintendent shall, through weekly Board notes or otherwise, keep the Board informed of reports that have been submitted on its behalf. Dr. Fields seconded the motion and it passed with a unanimous voice vote.

**APPROVAL OF  
THE PROVISOR'S  
FINANCIAL PLAN**

*Chairman Ruiz announced that there is nothing to approve at this time.*

**NEW BUSINESS**

*None at this time.*

**ANNOUNCEMENTS  
& REPORTS**

Chairman Ruiz introduced Dr. Proshanta Nandi from the Illinois Board of Higher Education (IBHE). Dr. Nandi stated that the IBHE had not yet met and the next IBHE meeting will be held on June 2, 2009, at Governor's State University in University Park.

**IBHE Liaison  
Report**

The Superintendent stated he traveled to Barrington, Elgin and Rockford with Joyce Karon to recognize several schools that have shown improvement. Dr. Koch attended the Violence Summit Youth Town Hall Meeting entitled "Nothing About Us Without Us" on May 9, 2009, at Dunbar Vocational High School and was accompanied by Dr. Vinni Hall, Chairman Ruiz and the Chairman's son. Superintendent Koch also served on a Leadership Panel with Jerry Stermer, Chief of Staff for Governor Quinn, and attended a Donor's Forum with Kristi Lafleur who is also from the Governor's Office. Superintendent Koch and Chairman Ruiz met with the Community Trust and the Illinois Arts Alliance.

**Superintendents  
Announcements**

He indicated that Beth Hanselman and Barb Sims testified before Congress on Tuesday, May 19, on physical restraint, time-out and positive behavior intervention strategies (PBIS). Illinois continues to be a flagship state in PBIS.

Dr. Koch stated he has had conversations with Harvard regarding the possible second year of our professional development effort.

Dr. Koch commented that he met with six auditors from the Department of Education Office of the Inspector General who are in the building doing audits. The Department of Education was pleased to hear of our efforts to reach out to districts in an attempt to prevent problems when the stimulus money is distributed, and they are committed to helping us as much as possible.

The Superintendent stated that he is glad to see school construction on the budget docket and congratulated Dean Clark for his appointment to EFAB. He also indicated that staff are tracking the number of task forces that may pass causing additional work for the agency.

Dr. Koch testified in two legislative hearings along with IEMA and the Department of Public Health on the status of the H1N1 (Swine) Flu in the schools.

Superintendent Koch commented that he gave the address at Loyola University School of Education's Commencement Ceremony.

Chairman Ruiz announced that Vinni Hall and Chris Ward will be attending the NASBE Study Group Meeting and the Board of Directors Meeting in Arlington, VA on June 11-13, 2009. Dr. Ward will also serve as a liaison to NASBE on a grant ISBE received on High School Transformation.

**Chairman's Report** Chairman Ruiz reported that he participated in the following events since the last Board meeting:

- April 17 Spoke at Annual Conf. of the IL Committee on Black Concerns in Higher Education at Kennedy King College.
- April 28 Attended National Latino Education Institute Dinner in Chicago.
- April 29 Panelist at Congressional Hispanic Caucus Education Task Force Hearing on the State of Latino Education in Washington, D.C.
- April 30 Celebrity reader at the Literacy Night Kick-Off Celebration in Chicago
- May 5 Spoke at National Forum on Re-enrolling Dropouts National Press Club in Washington, D.C.
- May 5 Spoke at Change the Future of School Food (for Healthy Schools Campaign) in Washington, D.C.
- May 9 Attended the Violence Summit Youth Hall Town Meeting "Nothing About Us Without Us" on May 9, 2009 at Dunbar Vocational High School.
- May 11 Met with Terry Mazany of Chicago Community Trust (with Supt. Koch).
- May 13 Panelist at the Here and Now 2: Change We Can Measure Symposium at the Union League Club in Chicago.
- May 14 Met with Dr. Koch and members of the Illinois Arts Alliance.
- May 18 Taping of Chicago Bar Association's TV program at WYCC Channel 20. Judge Wright was the host and we discussed various education topics and how the legal community can help improve Illinois educational system. (Program airs on Sunday evenings at 9:30.)

**MEMBER  
REPORTS**

**Lanita Koster**

Ms. Koster thanked Brenda Holmes and Dean Clark for all the work and service they have dedicated to advocate for the children of Illinois.

**Joyce Karon**

Ms. Karon stated that while she and Dr. Koch were recognizing Elgin School they also had the opportunity to attend the school's first Principal for a Day luncheon. Ms. Karon said that she was very impressed by the range of guest principals-- from the Chief of Police to the President of the Chamber of Commerce. Ms Karon also noted that Elgin High School will be holding a reception at Elgin Community College to honor 400 Elgin High School students who have achieved all three of their Work Keys components. The Elgin students have gone from 70 students to 400 students achieving the Work Keys.

Ms. Karon commented that she served as a grant reader for the Literacy Grants from the State Library.

**Chris Ward**

Dr. Ward stated that he has been contacted by a new, young Superintendent who has engaged in an ISU doctoral program and he will be assisting him in collecting information for his dissertation.

- Vinni Hall** Dr. Hall judged a Literacy Essay Contest for the Chicago Tribune with fellow members Joyce Karon and Lanita Koster. She also participated in the Financial Literacy Contest, judged the Metro Poster Contest and accepted an award on behalf of the Board from Adler Planetarium. She also indicated that she and Chairman Ruiz read to children at Cora Mayo School and attended the Ounce of Prevention event. She attended an Early Childhood Meeting for the evaluation team at Erickson.
- Andrea Brown** Dr. Brown attended several Grow Your Own meetings and a meeting at SIU with administrators and student teachers from school districts that housed student teachers. The meeting reflected on the problems and concerns of the programs and where they hope to be in the future.
- Dean Clark** Mr. Clark stated that he and Dr. Ward will be meeting in Villa Park on May 22, 2009 to discuss the topic of preparing board members.
- PRIOR TO CLOSED SESSION** Chairman Ruiz announced that following lunch and closed session, the Board will reconvene only to adjourn the meeting. We will disconnect the phone immediately following the next motion.
- CLOSED SESSION** Dr. Hall moved that the Board enter into closed session under the exceptions set forth in the Open Meetings Act of the State of Illinois as follows:  
**Section c1** for the purpose of considering the appointment, employment, compensation, performance or dismissal of an employee; and  
**Section c11** for the purpose of considering pending or probable litigation against or affecting the Board.  
 Dr. Hall further moved that the Board may invite anyone they wish to have included in this closed session.  
 Dr. Fields seconded the motion and it passed with a unanimous roll call vote.  
 The open meeting recessed at 11:20 a.m. and the Board went into closed session at 11:50 a.m. The open meeting reconvened at 12:35 p.m.
- MOTION FOR ADJOURNMENT** Mr. Clark moved that the meeting be adjourned. Dr. Fields seconded the motion and it passed with a unanimous voice vote. The meeting adjourned at 12:40 p.m.

Respectfully Submitted,

---

**Dr. Vinni Hall**  
Board Secretary

---

**Mr. Jesse Ruiz**  
Chairman

**ILLINOIS STATE BOARD OF EDUCATION MEETING**  
**June 18, 2009**

**TO:** Illinois State Board of Education

**FROM:** Christopher A. Koch, Ed.D., State Superintendent of Education   
Linda Riley Mitchell, Chief Financial Officer   
Donald W. Evans, Director of Human Resources, Professional   
Development and Conference Planning

**Agenda Topic:** Information Item: **SBE Fiscal & Administrative Monthly Reports**

**Materials:** Appropriations and Spending by Program  
Financial Status Report (contract & grant detail)  
Comparative Statement of Expenditures  
Monthly Headcount Graph, Staff Detail, Personnel Transactions

**Purpose of Agenda Item**

To provide the Board standard reports with key information on fiscal and administrative activities of the state Agency.

**Relationship to/Implications for the State Board's Strategic Plan**

Not applicable – informational item only.

**Expected Outcome(s) of Agenda Item**

Not applicable – informational item only.

**Background Information**

In June 2002, the State Board adopted bylaws outlining a new committee structure under which fiscal, audit and operations issues will be handled by the Finance and Audit Committee. The Superintendent requested that the Agency organize and standardize the financial and headcount data provided to the Board for their future policy work and decision making.

Currently, the following reports are provided:

1. Budget/Annual Report (annually in January)
2. Condition of Public Education (December)
3. Comptroller SEA Report (annually in February)
4. Appropriation and Expenditure (monthly)
5. Financial Status Report – Contract/Grant Detail (monthly)
6. Comparative Statement of Expenditures (monthly)
7. Headcount Reports (monthly)  
Personnel Transactions, Staff Detail by Division, & Monthly Headcount Graph

## **Analysis and Implications for Policy, Budget, Legislative Action and Communications**

The monthly or Quarterly Fiscal and Headcount Reports were first provided to the Board in August 2002. These reports provide information regarding staffing and funding as well as details of contracts over \$50,000 and grants the Agency is processing.

All contracts and grants totaling over \$1 million are reviewed at the Board level. Included in this month's review are:

- Illinois Interactive Report Card contract renewal
- ISAT development contract renewal
- ISAT administration contract renewal
- Shefsky and Froelich contract renewal
- School Improvement 1003g Grant

## **Superintendent's Recommendation**

None needed.

## **Next Steps**

Continue to provide these reports pursuant to the schedule above.

**Illinois State Board of Education**

**FY 2009 Appropriation & Spending by Program 07/01/2008 thru 05/31/2009**

(Dollars in Thousands)

Initiatives	Appropriation			YTD Expenditures		
	Total	Grants	Admin	Total	Grants	Admin
<b>STATE</b>						
<b>Distributive Grants</b>	<b><u>\$6,582,543.5</u></b>	<b><u>\$6,582,543.5</u></b>	<b><u>\$0.0</u></b>	<b><u>\$5,681,802.2</u></b>	<b><u>\$5,681,802.2</u></b>	<b><u>\$0.0</u></b>
General State Aid	\$3,626,500.4	\$3,626,500.4	\$0.0	\$3,542,573.9	\$3,542,573.9	\$0.0
ARRA - General State Aid-Educ Stabilization	\$689,595.9	\$689,595.9	\$0.0	\$623,185.1	\$623,185.1	\$0.0
ARRA - General State Aid-Gen Stabilization	\$274,163.6	\$274,163.6	\$0.0	\$0.0	\$0.0	\$0.0
General State Aid/Hold Harmless	\$26,106.4	\$26,106.4	\$0.0	\$26,106.4	\$26,106.4	\$0.0
Charter Schools - Transition Impact Aid	\$3,421.5	\$3,421.5	\$0.0	\$2,567.0	\$2,567.0	\$0.0
District Consolidation Cost	\$7,850.0	\$7,850.0	\$0.0	\$5,482.8	\$5,482.8	\$0.0
Fast Growth Grants	\$7,500.0	\$7,500.0	\$0.0	\$7,250.9	\$7,250.9	\$0.0
Gifted Education	\$7,000.0	\$7,000.0	\$0.0	\$0.0	\$0.0	\$0.0
Homeless Education	\$3,000.0	\$3,000.0	\$0.0	\$2,999.9	\$2,999.9	\$0.0
School Breakfast Incentive Program	\$723.5	\$723.5	\$0.0	\$255.2	\$255.2	\$0.0
School Safety & Education Block Grant (ADA)	\$74,841.0	\$74,841.0	\$0.0	\$74,841.0	\$74,841.0	\$0.0
Transition Assistance	\$36,763.6	\$36,763.6	\$0.0	\$0.0	\$0.0	\$0.0
Textbook Loan Program	\$42,826.5	\$42,826.5	\$0.0	\$0.0	\$0.0	\$0.0
<b>Mandated Categoricals</b>	<b><u>\$1,782,251.1</u></b>	<b><u>\$1,782,251.1</u></b>	<b><u>\$0.0</u></b>	<b><u>\$1,396,540.0</u></b>	<b><u>\$1,396,540.0</u></b>	<b><u>\$0.0</u></b>
Illinois Free Lunch/Breakfast	\$26,300.0	\$26,300.0	\$0.0	\$24,252.5	\$24,252.5	\$0.0
Orphanage Tuition 18-3 (Reg Ed)	\$11,600.0	\$11,600.0	\$0.0	\$8,724.4	\$8,724.4	\$0.0
Sp-Ed - Extraordinary Services	\$331,051.1	\$331,051.1	\$0.0	\$272,455.0	\$272,455.0	\$0.0
Sp-Ed - Orphanage Tuition 14-7.03	\$101,800.0	\$101,800.0	\$0.0	\$80,582.5	\$80,582.5	\$0.0
Sp-Ed - Personnel Reimbursement	\$426,100.0	\$426,100.0	\$0.0	\$339,921.3	\$339,921.3	\$0.0
Sp-Ed - Private Tuition	\$151,600.0	\$151,600.0	\$0.0	\$131,929.3	\$131,929.3	\$0.0
Sp-Ed - Summer School	\$11,000.0	\$11,000.0	\$0.0	\$10,854.4	\$10,854.4	\$0.0
Sp-Ed - Transportation	\$383,300.0	\$383,300.0	\$0.0	\$276,848.0	\$276,848.0	\$0.0
Transportation - Regular/Vocational	\$339,500.0	\$339,500.0	\$0.0	\$250,972.6	\$250,972.6	\$0.0
<b>Standards - Assessment &amp; Accountability</b>	<b><u>\$36,324.7</u></b>	<b><u>\$3,042.7</u></b>	<b><u>\$33,282.0</u></b>	<b><u>\$17,246.4</u></b>	<b><u>\$2,914.3</u></b>	<b><u>\$14,332.1</u></b>
Assessments	\$29,982.0	\$0.0	\$29,982.0	\$13,882.5	\$0.0	\$13,882.5
Growth Model	\$3,000.0	\$0.0	\$3,000.0	\$267.5	\$0.0	\$267.5
System of Support	\$3,342.7	\$3,042.7	\$300.0	\$3,096.4	\$2,914.3	\$182.1
<b>Ensuring Quality Ed Personnel</b>	<b><u>\$33,670.0</u></b>	<b><u>\$30,561.3</u></b>	<b><u>\$3,108.7</u></b>	<b><u>\$12,511.5</u></b>	<b><u>\$10,738.1</u></b>	<b><u>\$1,773.4</u></b>
Grow Your Own Teachers	\$3,500.0	\$3,029.9	\$470.1	\$3,047.0	\$2,687.6	\$359.4

Initiatives	Appropriation			YTD Expenditures		
	Total	Grants	Admin	Total	Grants	Admin
National Board Certification	\$11,485.0	\$11,485.0	\$0.0	\$0.0	\$0.0	\$0.0
Principal Mentoring Program	\$3,100.0	\$1,082.6	\$2,017.4	\$1,103.4	\$0.0	\$1,103.4
Chicago Principals and Admin Association	\$1,000.0	\$1,000.0	\$0.0	\$0.0	\$0.0	\$0.0
Teach for America	\$450.0	\$450.0	\$0.0	\$450.0	\$450.0	\$0.0
Teacher and Admin. Mentoring Program	\$14,000.0	\$13,378.8	\$621.2	\$7,795.4	\$7,484.8	\$310.6
Teacher of the Year	\$135.0	\$135.0	\$0.0	\$115.7	\$115.7	\$0.0
<b>Reading Improvement Block Grant</b>	<b><u>\$76,139.8</u></b>	<b><u>\$76,139.8</u></b>	<b><u>\$0.0</u></b>	<b><u>\$74,743.6</u></b>	<b><u>\$74,743.6</u></b>	<b><u>\$0.0</u></b>
<b>Early Childhood</b>	<b><u>\$380,261.4</u></b>	<b><u>\$376,192.5</u></b>	<b><u>\$4,068.9</u></b>	<b><u>\$356,937.3</u></b>	<b><u>\$353,789.3</u></b>	<b><u>\$3,148.0</u></b>
<b>Academic Difficulty</b>	<b><u>\$136,503.7</u></b>	<b><u>\$136,503.7</u></b>	<b><u>\$0.0</u></b>	<b><u>\$119,507.7</u></b>	<b><u>\$119,507.7</u></b>	<b><u>\$0.0</u></b>
Alternative Learning/Regional Safe Schools	\$18,535.5	\$18,535.5	\$0.0	\$17,005.6	\$17,005.6	\$0.0
Bilingual Education	\$75,652.0	\$75,652.0	\$0.0	\$63,798.2	\$63,798.2	\$0.0
Extended Learning Op (Summer Bridges)	\$22,238.1	\$22,238.1	\$0.0	\$18,756.2	\$18,756.2	\$0.0
Truant Alternative Optional Education	\$20,078.1	\$20,078.1	\$0.0	\$19,947.8	\$19,947.8	\$0.0
<b>Learning Technologies</b>	<b><u>\$4,169.7</u></b>	<b><u>\$2,719.7</u></b>	<b><u>\$1,450.0</u></b>	<b><u>\$3,638.3</u></b>	<b><u>\$2,388.3</u></b>	<b><u>\$1,250.0</u></b>
Technology for Success	\$4,169.7	\$2,719.7	\$1,450.0	\$3,638.3	\$2,388.3	\$1,250.0
<b>School Infrastructure</b>	<b><u>\$100.0</u></b>	<b><u>\$0.0</u></b>	<b><u>\$100.0</u></b>	<b><u>\$100.0</u></b>	<b><u>\$0.0</u></b>	<b><u>\$100.0</u></b>
Temporary Relocation Expense Fund Deposit	\$100.0	\$0.0	\$100.0	\$100.0	\$0.0	\$100.0
<b>Career Preparation</b>	<b><u>\$46,073.2</u></b>	<b><u>\$46,073.2</u></b>	<b><u>\$0.0</u></b>	<b><u>\$45,488.4</u></b>	<b><u>\$45,488.4</u></b>	<b><u>\$0.0</u></b>
Agricultural Education	\$3,381.2	\$3,381.2	\$0.0	\$3,276.2	\$3,276.2	\$0.0
Career and Technical Education	\$38,562.1	\$38,562.1	\$0.0	\$38,082.3	\$38,082.3	\$0.0
Illinois Governmental Internship Program	\$129.9	\$129.9	\$0.0	\$129.9	\$129.9	\$0.0
Jobs for Illinois Graduates	\$4,000.0	\$4,000.0	\$0.0	\$4,000.0	\$4,000.0	\$0.0
<b>Regional Services</b>	<b><u>\$16,090.0</u></b>	<b><u>\$16,090.0</u></b>	<b><u>\$0.0</u></b>	<b><u>\$14,976.8</u></b>	<b><u>\$14,976.8</u></b>	<b><u>\$0.0</u></b>
Regional Superintendent Initiatives	\$500.0	\$500.0	\$0.0	\$500.0	\$500.0	\$0.0
ROE - Bus Driver Training	\$70.0	\$70.0	\$0.0	\$70.0	\$70.0	\$0.0
ROE - Salaries	\$9,100.0	\$9,100.0	\$0.0	\$8,259.6	\$8,259.6	\$0.0
ROE - School Service	\$6,318.0	\$6,318.0	\$0.0	\$6,045.2	\$6,045.2	\$0.0
ROE - Supervisory Expenses	\$102.0	\$102.0	\$0.0	\$102.0	\$102.0	\$0.0
<b>Strategic Plan</b>	<b><u>\$500.0</u></b>	<b><u>\$0.0</u></b>	<b><u>\$500.0</u></b>	<b><u>\$327.2</u></b>	<b><u>\$0.0</u></b>	<b><u>\$327.2</u></b>
Strategic Plan	\$500.0	\$0.0	\$500.0	\$327.2	\$0.0	\$327.2
<b>Administration</b>	<b><u>\$24,479.2</u></b>	<b><u>\$0.0</u></b>	<b><u>\$24,479.2</u></b>	<b><u>\$20,931.1</u></b>	<b><u>\$0.0</u></b>	<b><u>\$20,931.1</u></b>

Initiatives	Appropriation			YTD Expenditures		
	Total	Grants	Admin	Total	Grants	Admin
<b>Targeted Initiatives</b>	<b><u>\$73,657.7</u></b>	<b><u>\$71,627.2</u></b>	<b><u>\$2,030.5</u></b>	<b><u>\$49,804.9</u></b>	<b><u>\$49,127.0</u></b>	<b><u>\$677.9</u></b>
Adler Planetarium	\$200.0	\$200.0	\$0.0	\$0.0	\$0.0	\$0.0
Advanced Placement Classes	\$1,646.9	\$1,635.3	\$11.6	\$1,374.9	\$1,363.3	\$11.6
Aerospace Education Initiative - Chicago	\$920.0	\$920.0	\$0.0	\$920.0	\$920.0	\$0.0
After School Programs	\$9,700.0	\$9,700.0	\$0.0	\$1,204.3	\$1,204.3	\$0.0
After School Matters	\$500.0	\$500.0	\$0.0	\$0.0	\$0.0	\$0.0
Agudath Israel of America-Sch. Transportation	\$1,200.0	\$1,200.0	\$0.0	\$1,200.0	\$1,200.0	\$0.0
Arts and Foreign Language	\$4,000.0	\$4,000.0	\$0.0	\$3,162.6	\$3,162.6	\$0.0
Autism Project	\$100.0	\$100.0	\$0.0	\$100.0	\$100.0	\$0.0
Blind & Dyslexic	\$1,218.8	\$1,218.8	\$0.0	\$1,218.0	\$1,218.0	\$0.0
Children's Mental Health Partnership	\$3,000.0	\$2,803.2	\$196.8	\$1,597.7	\$1,464.8	\$132.9
Class Size Reduction Pilot Project	\$8,000.0	\$8,000.0	\$0.0	\$7,211.2	\$7,211.2	\$0.0
Classroom Cubed	\$2,000.0	\$2,000.0	\$0.0	\$2,000.0	\$2,000.0	\$0.0
Community Residential Services Authority	\$575.0	\$0.0	\$575.0	\$482.9	\$0.0	\$482.9
Educator Misconduct Investigations	\$375.0	\$0.0	\$375.0	\$48.5	\$0.0	\$48.5
Hard to Staff Schools Incentives	\$3,000.0	\$3,000.0	\$0.0	\$0.0	\$0.0	\$0.0
Healthy Kids/Healthy Minds - Chicago	\$3,000.0	\$3,000.0	\$0.0	\$3,000.0	\$3,000.0	\$0.0
Healthy Kids/Healthy Minds - Cicero & Berwy	\$1,000.0	\$1,000.0	\$0.0	\$1,000.0	\$1,000.0	\$0.0
Illinois Economic Education	\$250.0	\$250.0	\$0.0	\$250.0	\$250.0	\$0.0
Materials Center for the Visually Impaired	\$2,121.0	\$2,121.0	\$0.0	\$2,121.0	\$2,121.0	\$0.0
Metro East Consortium for Child Advocacy	\$217.1	\$217.1	\$0.0	\$217.1	\$217.1	\$0.0
Minority Transition Program	\$578.8	\$578.8	\$0.0	\$543.0	\$543.0	\$0.0
Museum of Science and Industry	\$200.0	\$200.0	\$0.0	\$0.0	\$0.0	\$0.0
Parental Participation Pilot Project	\$100.0	\$100.0	\$0.0	\$100.0	\$100.0	\$0.0
Philip J. Rock Center & School	\$3,577.8	\$3,577.8	\$0.0	\$3,577.8	\$3,577.8	\$0.0
Re-Enrolling Students Program	\$4,000.0	\$4,000.0	\$0.0	\$3,730.0	\$3,730.0	\$0.0
Response to Intervention	\$2,000.0	\$1,128.0	\$872.1	\$2.0	\$0.0	\$2.0
Rural Technology Initiative	\$4,000.0	\$4,000.0	\$0.0	\$0.0	\$0.0	\$0.0
Targeted Interventions	\$4,000.0	\$4,000.0	\$0.0	\$2,610.0	\$2,610.0	\$0.0
Tax Equivalent Grants	\$222.6	\$222.6	\$0.0	\$222.6	\$222.6	\$0.0
Transportation Reimbursement to Parents	\$11,954.7	\$11,954.7	\$0.0	\$11,911.2	\$11,911.2	\$0.0
<b>Reappropriations</b>	<b><u>\$40,070.5</u></b>	<b><u>\$39,431.1</u></b>	<b><u>\$639.4</u></b>	<b><u>\$40,070.4</u></b>	<b><u>\$39,431.0</u></b>	<b><u>\$639.4</u></b>
Textbook Loan Reappropriation	\$40,070.5	\$39,431.1	\$639.4	\$40,070.4	\$39,431.0	\$639.4

**NON STATE**

Initiatives	Appropriation			YTD Expenditures		
	Total	Grants	Admin	Total	Grants	Admin
<b>School Infrastructure Fund</b>	<b><u>\$113.0</u></b>	<b><u>\$0.0</u></b>	<b><u>\$113.0</u></b>	<b><u>\$94.9</u></b>	<b><u>\$0.0</u></b>	<b><u>\$94.9</u></b>
School Infrastructure (Debt Admin)	\$113.0	\$0.0	\$113.0	\$94.9	\$0.0	\$94.9
<b>Driver Education</b>	<b><u>\$18,010.4</u></b>	<b><u>\$17,929.6</u></b>	<b><u>\$80.8</u></b>	<b><u>\$13,513.2</u></b>	<b><u>\$13,446.3</u></b>	<b><u>\$67.0</u></b>
<b>Other Funds</b>	<b><u>\$25,528.9</u></b>	<b><u>\$7,420.0</u></b>	<b><u>\$18,108.9</u></b>	<b><u>\$7,099.1</u></b>	<b><u>\$2,353.1</u></b>	<b><u>\$4,746.0</u></b>
Charter Schools Revolving Loan Fund	\$20.0	\$20.0	\$0.0	\$0.0	\$0.0	\$0.0
Emergency Financial Assistance Fund	\$1,000.0	\$1,000.0	\$0.0	\$0.0	\$0.0	\$0.0
Indirect Costs	\$7,015.2	\$0.0	\$7,015.2	\$3,151.4	\$0.0	\$3,151.4
ISBE Special Purpose Trust Fund	\$8,484.8	\$0.0	\$8,484.8	\$108.9	\$0.0	\$108.9
ISBE Teacher Certificate Institute Fund	\$1,008.9	\$0.0	\$1,008.9	\$276.9	\$0.0	\$276.9
School Technology Revolving Loan	\$5,000.0	\$5,000.0	\$0.0	\$1,912.3	\$1,912.3	\$0.0
Teacher Certification Fee Revolving Fund	\$1,600.0	\$0.0	\$1,600.0	\$1,208.7	\$0.0	\$1,208.7
Temporary Relocation Revolving Fund	\$1,400.0	\$1,400.0	\$0.0	\$440.9	\$440.9	\$0.0
<b>FEDERAL</b>						
<b>Federal Funds</b>	<b><u>\$2,772,820.8</u></b>	<b><u>\$2,702,215.7</u></b>	<b><u>\$70,605.1</u></b>	<b><u>\$1,637,166.2</u></b>	<b><u>\$1,601,590.0</u></b>	<b><u>\$35,576.2</u></b>
Advanced Placement Fee Payment	\$2,144.0	\$2,000.0	\$144.0	\$750.8	\$746.8	\$4.0
ARRA - Child Nutrition Sch Lunch Equipment	\$3,294.0	\$3,294.0	\$0.0	\$0.0	\$0.0	\$0.0
ARRA - IDEA - Part B	\$253,240.0	\$253,240.0	\$0.0	\$74.9	\$74.9	\$0.0
ARRA - IDEA - Pre-School	\$9,155.5	\$9,155.5	\$0.0	\$0.0	\$0.0	\$0.0
ARRA - McKinney Homeless	\$2,020.0	\$2,020.0	\$0.0	\$0.0	\$0.0	\$0.0
ARRA - Title I	\$210,074.4	\$210,074.4	\$0.0	\$0.0	\$0.0	\$0.0
Career & Technical Education	\$56,284.4	\$55,000.0	\$1,284.4	\$41,140.7	\$40,356.1	\$784.5
Career & Technical Education - Technical Prep	\$5,232.0	\$5,000.0	\$232.0	\$3,906.7	\$3,795.9	\$110.8
Charter Schools	\$6,213.0	\$6,000.0	\$213.0	\$844.2	\$763.4	\$80.9
Child Nutrition	\$534,075.8	\$525,000.0	\$9,075.8	\$466,196.7	\$460,023.1	\$6,173.6
Illinois Purchase Care Review Board	\$277.5	\$0.0	\$277.5	\$242.0	\$0.0	\$242.0
Individuals with Disabilities Educ. Act, Pt. B	\$581,922.5	\$570,000.0	\$11,922.5	\$456,624.9	\$448,680.1	\$7,944.9
IDEA - Deaf Blind, Part C	\$450.0	\$450.0	\$0.0	\$291.6	\$291.6	\$0.0
IDEA - Improvement Plan	\$2,730.3	\$2,500.0	\$230.3	\$1,228.6	\$1,171.6	\$57.0
IDEA - Model Outreach	\$400.0	\$400.0	\$0.0	\$0.0	\$0.0	\$0.0
IDEA - Pre-School	\$25,805.1	\$25,000.0	\$805.1	\$16,289.5	\$15,793.0	\$496.5
Learn and Serve America	\$2,552.0	\$2,500.0	\$52.0	\$656.6	\$618.6	\$38.0
Math & Science Partnerships	\$9,391.0	\$9,000.0	\$391.0	\$2,837.2	\$2,624.3	\$212.9
Integration of Schools & Mental Health System	\$400.0	\$166.3	\$233.7	\$86.1	\$25.8	\$60.3
National Center for Education Statistics	\$187.5	\$0.0	\$187.5	\$125.9	\$0.0	\$125.9

Initiatives	Appropriation			YTD Expenditures		
	Total	Grants	Admin	Total	Grants	Admin
ONPAR	\$2,000.0	\$800.0	\$1,200.0	\$724.8	\$724.8	\$0.0
Refugee	\$2,001.0	\$2,000.0	\$1.0	\$0.0	\$0.0	\$0.0
School Health Programs	\$1,039.9	\$0.0	\$1,039.9	\$236.3	\$0.0	\$236.3
Title I - Basic Programs	\$641,632.1	\$634,905.0	\$6,727.1	\$424,014.8	\$420,155.6	\$3,859.3
Title I - Comprehensive School Reform	\$65.9	\$0.0	\$65.9	\$0.0	\$0.0	\$0.0
Title I - Education of Migratory Children	\$4,796.3	\$4,695.0	\$101.3	\$768.7	\$744.0	\$24.7
Title I - Even Start Family Literacy Programs	\$4,815.1	\$4,500.0	\$315.1	\$2,345.4	\$2,244.4	\$101.0
Title I - Neglected and Delinquent	\$1,439.8	\$1,400.0	\$39.8	\$873.2	\$873.2	\$0.0
Title I - Reading First	\$62,636.1	\$60,000.0	\$2,636.1	\$31,701.2	\$30,796.3	\$904.9
Title I - School Improvement	\$30,904.0	\$29,500.0	\$1,404.0	\$20,654.6	\$20,032.0	\$622.6
Title II - Enhance Ed through Technology	\$20,817.5	\$20,000.0	\$817.5	\$9,682.0	\$9,460.6	\$221.5
Title II - Quality Teachers	\$137,808.9	\$135,000.0	\$2,808.9	\$80,629.3	\$79,469.5	\$1,159.9
Title III - English Language Acquisition	\$41,866.5	\$40,000.0	\$1,866.5	\$20,328.0	\$19,584.5	\$743.5
Title IV - 21st Century Schools	\$56,593.8	\$55,000.0	\$1,593.8	\$32,894.2	\$32,003.7	\$890.5
Title IV - Safe & Drug Free Schools	\$15,319.7	\$15,000.0	\$319.7	\$7,114.4	\$6,896.6	\$217.9
Title V - Innovative Programs	\$8,280.7	\$8,000.0	\$280.7	\$149.6	\$149.6	\$0.0
Title VI - Rural & Low Income Programs	\$1,531.5	\$1,500.0	\$31.5	\$540.1	\$525.2	\$14.9
Title VI - State Assessment	\$23,780.3	\$0.0	\$23,780.3	\$10,110.8	\$0.0	\$10,110.8
Title X - McKinney Homeless Assistance	\$3,511.7	\$3,250.0	\$261.7	\$2,477.8	\$2,391.8	\$86.0
Transition to Teaching	\$1,131.2	\$1,000.0	\$131.2	\$574.7	\$523.8	\$51.0
Special Congressional Initiatives	\$5,000.0	\$4,865.5	\$134.5	\$49.7	\$49.7	\$0.0
<b>TOTAL - ALL FUNDS:</b>	<b>\$10,267,056.5</b>	<b>\$10,108,489.9</b>	<b>\$158,566.6</b>	<b>\$8,095,959.2</b>	<b>\$8,012,296.1</b>	<b>\$83,663.1</b>

**ILLINOIS STATE BOARD OF EDUCATION  
FINANCIAL STATUS REPORT - 07/01/08 THROUGH 5/31/09**

	<u>Approp Amount</u>	<u>Expended Year to Date</u>	<u>% Spent Year to Date</u>	<u>May Expenditures</u>	<u>Description</u>
Personal Services and Related	46,003.5	38,488.1	83.7%	3,500.7	Salaries & Benefits
Contractual Services	105,771.8	42,545.0	40.2%	3,498.9	Agency Contracts (see below); Non-Employee Travel; Conferences; Registration Fees
Travel	2,299.1	1,081.1	47.0%	105.8	Staff Travel
Commodities	741.8	137.1	18.5%	3.6	Supplies; Books
Printing	918.6	110.8	12.1%	50.5	Agency Printing
Equipment	887.3	157.0	17.7%	10.1	Computers; Printers; Furniture
Telecommunications	1,145.9	358.5	31.3%	34.5	Telecommunications Expenses
Auto Operations	20.0	11.7	58.6%	0.0	Operation of Agency Autos
Prompt Payment Act	642.8	642.8	100.0%	69.3	Prompt Payment
Refunds	35.7	31.0	86.9%	25.3	Refunds
Temp. Relocation Revolving Fund	100.0	100.0	100.0%	0.0	Interfund Cash Transfer
Grants	10,108,489.9	8,012,296.1	79.3%	634,381.6	See Detail Below

	<u>Funded Amount</u>	<u>Expended Year to Date</u>	<u>% Spent Year to Date</u>	<u>May Expenditures</u>	<u>Description</u>
<b>Agency Contracts Breakdown:</b>					
<u>State Superintendent</u>					
John Perkins					School District Liaison
GRF	79.0	65.4	82.8%	0.0	
University of Illinois					Services of Susie Morrison to assist with Board priorities; serve on senior leadership team, etc.
GRF	133.1	110.9	83.3%	11.1	
Illinois State University					Gates Foundation to align IL Learning Standards and Assessments with college work readiness standards
Other State	85.0	65.0	76.5%	0.0	
<u>Human Resources</u>					
K & L Gates LLP (formerly Bell, Boyd and Lloyd)					Arbitration matters
GRF	75.0	53.7	71.6%	0.0	
Other State	75.0	0.0	0.0%	0.0	
<u>Administrative Services</u>					
Xerox Corp					Copier Maintenance Repairs
GRF	85.0	85.0	100.0%	0.0	
Other State	100.0	67.8	67.8%	9.1	
Alzina					Building lease in Springfield
GRF	1,472.5	1,472.3	100.0%	0.0	
Other State	357.8	357.8	100.0%	0.0	
Federal	858.8	858.8	100.0%	0.0	
Facilities Management					Rent for Chicago Office, Thompson Center
GRF	89.0	88.9	99.9%	0.0	
Other State	13.4	13.4	100.0%	0.0	
Federal	161.3	117.4	72.8%	22.0	

	<u>Funded Amount</u>	<u>Expended Year to Date</u>	<u>% Spent Year to Date</u>	<u>May Expenditures</u>	<u>Description</u>
<u>General Counsel/Legal</u>					
42 Impartial Hearing Officers					Teacher Dismissal Hearing Officers
GRF	168.0	20.4	12.1%	4.8	
Franczek, Sullivan PC					Attorney General's Office appointed Res Vazquez to continue as Legal Counsel for the ongoing implementation and monitoring of the Corey H. consent decree
GRF	120.0	112.7	93.9%	6.9	
Kubiesa, Spiroff, Gosselar, Acker & DeBlasio, P.C.					Assist in recovery of Grant funds from West Harvey-Dixmoor SD #147 and represent ISBE with other cases as assigned.
GRF	60.7	49.9	82.2%	0.0	
Other State	39.3	39.3	100.0%	0.0	
Shefsky & Froelich LTD					Prosecution of Educator misconduct cases and any other cases ISBE may request
GRF	100.0	48.5	48.5%	0.0	
<u>Data Systems</u>					
IBM					Development of Statewide Student Information System
GRF	1,910.5	1,557.5	81.5%	0.0	
Federal	1,459.5	1,317.5	90.3%	247.5	
Utilistar					Data analysis and reporting for Supplemental Education Services
Federal	50.0	20.7	41.4%	0.0	
Ashbaugh & Associates					Programmer for CERTS System to merge into TCIS/OTIS
Other State	71.9	65.5	91.1%	0.0	
Ashbaugh & Associates					Two programmers for Child Nutrition System - MY08211
Federal	174.9	156.6	89.5%	7.9	
Ashbaugh & Associates					Two programmers for Child Nutrition System/ACES - 187
Federal	307.5	223.6	72.7%	11.8	
Capitol Strategies					Programmer for Child Nutrition/ ACES - MY07211
Federal	163.6	126.6	77.4%	13.0	
Capitol Strategies					Programmer for Entity System - MY07212
GRF	150.8	111.7	74.1%	12.5	
Capitol Strategies					Programmer for Child Nutrition System - MY08212
Federal	291.2	251.2	86.3%	32.6	
Ashbaugh & Associates					Programmer for Teacher Certification Information System and Educator Certification System
Other State	74.4	46.2	62.1%	6.2	
<u>Technology Support</u>					
Dell Marketing LP					CMS master lease agreement - 5 year lease of Storage Area Network and server products and components including Pro-Support Warranty
GRF	135.4	0.0	0.0%	0.0	
Other State	109.6	0.0	0.0%	0.0	
Federal	78.2	0.0	0.0%	0.0	
<u>Curriculum &amp; Instruction</u>					
IL Caucus for Adolescent Health					HIV Prevention Education
Federal	80.0	50.0	62.5%	23.2	
Children's Memorial Hospital					2009 Youth Risk Behavior Survey
Federal	80.0	39.5	49.4%	0.0	
Linda Rakers					Budget manager for four federal programs
Federal	60.0	21.6	36.0%	2.8	
MGT of America, Inc.					Reading First Statewide Evaluation
Federal	271.1	226.0	83.4%	22.6	
The Center: Resources for Teaching and					Learn and Serve America Program
Federal	111.0	108.4	97.7%	30.9	
Elizabeth Oyer					Evaluation and Research of Illinois Math & Science Partnerships Program
Federal	68.8	51.6	75.0%	0.0	
Sangamon County ROE					Statewide Education Initiatives (Lieberman)
Federal	53.0	39.2	74.0%	0.0	
IL Math & Science Academy					Act as fiscal agent for ISBE for the Illinois Virtual High School (IVHS) Program

	<u>Funded Amount</u>	<u>Expended Year to Date</u>	<u>% Spent Year to Date</u>	<u>May Expenditures</u>	<u>Description</u>
GRF	1,250.0	1,250.0	100.0%	0.0	Administer, plan and implement the IL Virtual School (IVS) Program
Peoria County ROE					
GRF	200.0	0.0	0.0%	0.0	
Federal	25.0	0.0	0.0%	0.0	Launch the Scaling-up of Evidence-based Practices (commonly known as SISEP) by developing training sequence and statewide infrastructure and implementation of ISBE's integrated coaching model for student achievement.
Peoria County ROE					
GRF	215.3	0.0		0.0	
<u>Early Childhood</u>					
Henderson Mercer Warren -ROE 27					Third party monitoring of Early Childhood Block Grant Programs
GRF	700.0	560.0	80.0%	0.0	
Erikson Institute					Early Childhood Social and Emotional Consultation
GRF	1,120.0	1,120.0	100.0%	0.0	
Erikson Institute					Early Childhood Evaluation
GRF	1,120.0	870.0	77.7%	0.0	
<u>English Language Learning</u>					
Illinois Migrant Council					Support and technical assistance to the Migrant Education Program - contract ends 8/31/08
Federal	99.8	88.4	88.6%	0.0	
Illinois Migrant Council					Support & technical assistance to the Migrant Education Program - contract began 9/1/08
Federal	387.2	239.6	61.9%	0.0	
Illinois Department of Human Services					Welcoming Centers
Federal	50.0	37.5	75.0%	0.0	
<u>Special Education Services</u>					
15 Hearing Officers					Impartial Hearing Officers in the local-level due process hearing/Section 14-8.02 of the School
Federal	592.2	376.6	63.6%	29.6	
9 Mediation Agreements					IDEA mandates ISBE to offer mediation services
Federal	97.7	82.3	84.2%	12.2	
Hupp Information Technology					Customize the Special Ed Data Systems and add critical indicators for the mediation process
Federal	331.4	225.8	68.1%	23.6	
ROE # 20					Harrisburg Project - Manage software by special education districts and co-ops
Federal	735.0	679.5	92.4%	55.5	
3 Corey H. CPS Monitors					Corey H. Settlement - CPS Monitors
Federal	59.4	56.5	95.1%	10.5	
Gail Imobersteg					Evaluation of Hearing Officers
Federal	50.0	41.7	83.4%	4.2	
Measurement Inc.					Parent Surveys - two cycles of surveys this fiscal year
Federal	61.0	40.7	66.7%	20.3	
Loyola University					Assist in implementation of evaluation of special education programs
GRF	78.6	51.9	66.0%	8.9	
Federal	40.6	40.6	100.0%	0.0	
Sangamon County ROE					Facilitate and provide technical assistance through subcontractor, Dr. Michael Parrish, for the Special Education Funding Task Force regarding special education funding needs
GRF	74.9	45.0	60.1%	15.0	
<u>Grants &amp; Programs</u>					
Education Innovations					Evaluation Model for SES Providers
Federal	82.4	0.0	0.0%	0.0	
Northern Illinois University					Comprehensive external evaluation of the 21st Century Program
Federal	165.7	95.4	57.6%	0.0	
Learning Point Associates					Statewide technical assistance and monitoring for the 21st Century Program
Federal	500.0	124.9	25.0%	0.0	
Measurement, Inc.					Evaluation Services for RESPROS
Federal	89.9	66.0	73.4%	0.0	
Academic Development, Inc.					Technical assistance to schools/districts in developing evaluations for the content and effectiveness of the parental involvement policy activities and programs for improving the academic quality of schools through the spread of internet technology.

	<u>Funded Amount</u>	<u>Expended Year to Date</u>	<u>% Spent Year to Date</u>	<u>May Expenditures</u>	<u>Description</u>
Federal	84.3	57.6	68.3%	0.0	
<u>Assessment</u>					
Metri Tech, Inc.					Develop, administer, retrieve, analyze, and score the Consumer Ed Proficiency Test
GRF	117.5	38.0	32.3%	9.8	
Measurement Inc.					Writing component of ISAT - contract ended 9/2008
GRF	200.9	200.9	100.0%	0.0	
NCS Pearson (Harcourt)					Formerly Harcourt Contract - Enhanced Statewide Student Assessment System - MY05647
GRF	5,265.3	3,910.9	74.3%	0.0	
University of Illinois					Assessment Evaluation
GRF	125.0	125.0	100.0%	0.0	
Federal	125.0	62.5	50.0%	0.0	
NCS Pearson, Inc.					IAA Test (MY066410)
Federal	2,996.4	2,278.0	76.0%	0.0	
Harte-Hanks					Third Party Oversight
GRF	150.0	147.5	98.3%	0.0	
Federal	100.0	74.7	74.7%	13.9	
Wisconsin University - WIDA Consortium					Title III Requirements for the ACCESS test (bilingual). Validated through comparative studies by WIDA Consortia
GRF	4,465.3	2,648.5	59.3%	0.0	
NCS Pearson, Inc.					Implement ISAT Test and State Assessment Accountability Requirements - MY07645
GRF	4,534.0	4,534.0	100.0%	0.0	
Federal	8,763.6	7,568.4	86.4%	1,195.2	
American College Testing					ACT Test - College Entrance Exam
GRF	7,801.3	0.0	0.0%	0.0	
Federal	4,110.0	0.0	0.0%	0.0	
Measurement Inc.					Emergency - ISAT - Writing Component
GRF	2,994.9	1,497.5	50.0%	748.7	
<u>Educator Certification</u>					
Target Area Development Corp					Grow Your Own Initiative
GRF	350.0	262.5	75.0%	0.0	
Philliber Research Associates					Evaluation of Grow Your Own Initiative
GRF	118.2	95.0	80.4%	9.5	
<u>Educator and School Development</u>					
Illinois Principals Association					New Principals Mentoring Program
Other State	2,013.2	1,100.0	54.6%	0.0	
4 Hearing Officers					Certification revocation hearing officers
Other State	133.7	7.9	5.9%	0.0	
Iroquois-Kankakee County ROE					National Board of Professional Teaching Standards to serve schools outside City of Chicago - Component 2
Federal	239.0	139.0	58.2%	0.0	
Illinois State University					National Board of Professional Teaching Standards to serve schools outside City of Chicago - Component 1
Federal	680.4	320.0	47.0%	0.0	
University of Illinois					New Illinois Teacher Collaborative
GRF	520.6	310.6	59.7%	0.0	
<u>Standards &amp; Assessments</u>					
Northern Illinois University					A "live data" website for an Illinois Interactive Report Card
GRF	539.1	486.0	90.2%	0.0	
Federal	458.7	242.8	52.9%	0.0	
<u>Fiscal and Procurement</u>					
Acculngua International					Translation of documents from English to other languages

	<u>Funded Amount</u>	<u>Expended Year to Date</u>	<u>% Spent Year to Date</u>	<u>May Expenditures</u>	<u>Description</u>
GRF	51.5	12.6	24.5%	0.0	
Federal	65.0	21.9	33.7%	0.0	
Workforce Services (Jill Bishop)					Translation of documents from English to other languages
GRF	11.0	0.0	0.0%	0.0	
Federal	82.1	72.7	88.6%	0.0	
<b>Funding &amp; Disbursements</b>					
MTW Solutions, LLC					Develop mechanism to extract data from e-Grants System
GRF	29.8	6.4	21.5%	0.0	
Federal	20.3	19.3	95.1%	0.0	
<b>Nutrition Programs</b>					
Southern Illinois University					Evaluation and reviews for School Meals Initiative (SMI)
Federal	195.5	160.5	82.1%	29.6	
Legal Resolve, Inc.					Administrative Hearing Officer for Child Care Food Program
Federal	100.0	34.7	34.7%	0.0	
Department of Public Health					Summer Food Inspection Program
Federal	75.0	75.0	100.0%	0.0	
Department of Public Health					Summer Food Inspection Program
Federal	77.0	0.0	0.0%	0.0	
<b>Grants Breakdown:</b>					
General State Aid	3,652,606.8	3,568,680.3	97.7%	0.0	Formula
General State Aid - <b>ARRA</b>	963,759.5	623,185.1	64.7%	415,533.6	Formula - Federal Stimulus
Title I - Low Income	675,000.0	444,049.0	65.8%	5,211.2	Formula
IDEA	570,000.0	448,680.0	78.7%	49,867.1	Formula
Child Nutrition	525,000.0	460,023.0	87.6%	36,825.4	Formula - Reimbursement
Spec Ed Personnel	426,100.0	339,921.3	79.8%	0.0	Formula
Transportation Spec Ed	383,300.0	276,848.0	72.2%	40,045.3	Formula
Early Childhood Block	375,657.5	353,789.2	94.2%	32,786.9	Block grant for Pre-K, parent training and prevention initiative
Transportation Reg/Voc	339,500.0	250,972.5	73.9%	0.0	Formula
Spec Ed Extraordinary	331,051.1	272,455.0	82.3%	0.0	Mandated Categorical
IDEA - Flow Through <b>ARRA</b>	253,240.0	74.9	0.0%	74.9	Formula - Federal Stimulus
Title I - Low Income - <b>ARRA</b>	210,074.4	0.0	0.0%	0.0	Formula - Federal Stimulus
Spec Ed Private Facility Tuition	151,600.0	131,929.3	87.0%	0.0	Formula
Title II - Quality Teachers	135,000.0	79,469.5	58.9%	2,092.0	Formula
Spec Ed Orphanage	101,800.0	80,582.5	79.2%	0.0	Formula
Reading Imp. Block Grant	76,139.8	74,743.6	98.2%	487.9	Formula
ADA Sch. Safety and Ed. Bl.	74,841.0	74,841.0	100.0%	0.0	Formula
Title I - Reading First	60,000.0	30,796.3	51.3%	5,584.3	Competitive and formula grants
Title IV - 21st Century	55,000.0	32,003.7	58.2%	6,062.1	Competitive
Voc Ed - Federal	55,000.0	40,356.1	73.4%	6,494.9	Formula and Competitive - to improve student academic and career skills
Textbook Program	42,826.5	0.0	0.0%	0.0	Payment for textbooks purchased during year
Bilingual Education - Chicago	41,500.0	41,500.0	100.0%	0.0	Chicago Block Grant
Title III - English Language Acq	40,000.0	19,584.5	49.0%	1,686.9	Grant
Textbook Loan - Reappropriation	39,431.1	39,431.0	100.0%	0.0	Payment for textbooks purchased during previous year
Vocational Education - State	38,562.1	38,082.3	98.8%	4,392.7	Formula
Transition Assistance	36,763.6	0.0	0.0%	0.0	Formula
Bilingual Education - Downstate	34,152.0	22,298.2	65.3%	6,726.0	Mandated Categorical
State Free Lunch and Breakfast	26,300.0	24,252.5	92.2%	1,279.2	Mandated Categorical - Reimbursement
Preschool - Spec Ed	25,000.0	15,793.0	63.2%	2,397.3	Formula - special education, 3-5 year-olds
Summer Bridges	22,238.1	18,756.2	84.3%	0.0	Grants to districts (based on ISAT reading scores)
Truant/Dropout/Optional Education	20,078.1	19,947.8	99.4%	1,226.4	Competitive - at-risk students/dropout prevention
Technology Literacy	20,000.0	9,460.6	47.3%	994.6	Competitive and non-competitive grants to school districts
Alternative Ed/Reg Safe Schools	18,535.5	17,005.6	91.7%	0.0	Formula
Driver Education	17,929.6	13,446.3	75.0%	0.0	Reimbursement
Title IV - Safe and Drug Free	15,000.0	6,896.6	46.0%	116.0	Formula

	<u>Funded Amount</u>	<u>Expended Year to Date</u>	<u>% Spent Year to Date</u>	<u>May Expenditures</u>	<u>Description</u>
Teachers/Admin. Mentoring	13,378.8	7,484.8	55.9%	2,370.2	Grants
Parent/Guardian Transportation	11,954.7	11,911.2	99.6%	0.0	Formula based on appropriation level divided by eligible students
Orphanage Tuition	11,600.0	8,724.4	75.2%	0.0	Reimbursement to school districts for children residing in orphanages
Nat'l Board Certification	11,485.0	0.0	0.0%	0.0	Grants
Spec Ed Summer School	11,000.0	10,854.4	98.7%	0.0	Formula - Special ed students enrolled in summer sessions
After School Mentoring	9,700.0	1,204.3	12.4%	35.7	Grants
Preschool - Spec Ed - <b>ARRA</b>	9,155.5	0.0	0.0%	0.0	Formula - Federal Stimulus
ROE Salaries	9,100.0	8,259.6	90.8%	753.1	Salaries for ROE's
Title II Math/Science Partnerships	9,000.0	2,624.3	29.2%	54.7	Formula
Class Size Reduction Pilot	8,000.0	7,211.2	90.1%	2,445.5	Grants for K-3
Title V - Innovative Programs	8,000.0	149.6	1.9%	7.0	Formula
Reorganization Incentive	7,850.0	5,482.8	69.8%	0.0	Grants to districts to encourage reorganization through consolidation/annexation
Fast Growth Grants	7,500.0	7,250.9	96.7%	0.0	Grants
Gifted Education	7,000.0	0.0	0.0%	0.0	Grants
ROE School Services	6,318.0	6,045.2	95.7%	0.0	Formula - ROE Operations
Charter Schools - Federal	6,000.0	763.4	12.7%	70.2	Competitive
Voc Ed - Federal Tech Prep	5,000.0	3,795.9	75.9%	771.4	Grants - assists students in achieving learning/occupational skills standards
School Tech. Rev. Loan	5,000.0	1,912.3	38.2%	0.0	Loans to schools to implement technology
Spec. Congressional Initiatives	4,865.5	49.7	1.0%	0.0	Grants
Rural Tech Initiatives	4,000.0	0.0	0.0%	0.0	Grants
Targeted Interventions	4,000.0	2,610.0	65.3%	658.1	Grants
Re-Enrolling Student Program	4,000.0	3,730.0	93.3%	0.0	Grant to Alternative Schools Network
Jobs for IL Graduates	4,000.0	4,000.0	100.0%	497.7	Grants to formula reimbursement, work-based learning, jobs for IL graduates
Arts & Foreign Language	4,000.0	3,162.6	79.1%	304.3	Grants
Philip Rock Center	3,577.8	3,577.8	100.0%	0.0	Targeted Initiative
State Charter Schools	3,421.5	2,567.0	75.0%	0.0	Grants - Start-up funds
Agriculture Education	3,381.2	3,276.2	96.9%	743.1	Grants to school districts
Child Nutrition - <b>ARRA</b>	3,294.0	0.0	0.0%	0.0	Formula - Federal Stimulus
McKinney Homeless Ed	3,250.0	2,391.8	73.6%	347.3	Competitive grants to school districts
Standards Assessment & Acct	3,042.7	2,914.3	95.8%	189.6	Grants for K-6 Arts, Learn Improve, Learning Standards, Student/Teacher Assessment
Grow Your Own Teachers	3,029.9	2,687.6	88.7%	405.0	Grants
Hard to Staff Schools	3,000.0	0.0	0.0%	0.0	Grants
Homeless Education State	3,000.0	2,999.9	100.0%	2,928.9	Grants
Healthy Kids/Minds/Exp Vision	3,000.0	3,000.0	100.0%	375.0	Grants
Children's Mental Health Partner	2,803.2	1,464.8	52.3%	2.5	Grants
Technology for Success -State	2,719.7	2,388.3	87.8%	0.0	Grants
Learn & Serve America	2,500.0	618.6	24.7%	172.2	Competitive grants
IDEA Part D	2,500.0	1,171.6	46.9%	304.3	Reimbursement
Mat'ls for the Visually Impaired	2,121.0	2,121.0	100.0%	221.0	Targeted Init. - with The Chicago Lighthouse for People who are Blind or Visually Impaired
McKinney Homeless Ed - <b>ARRA</b>	2,020.0	0.0	0.0%	0.0	Formula - Federal Stimulus
Classroom Cubed	2,000.0	2,000.0	100.0%	282.6	Grant to Rock Island Milan School Dist 41.
Refugee Children	2,000.0	0.0	0.0%	0.0	Grants
Advanced Placement Fee	2,000.0	746.8	37.3%	0.0	Fee reimbursement for Adv Placement Exam and Int'l Baccalaureate exam
Advanced Placement Classes	1,635.3	1,363.3	83.4%	71.7	Grants
Title VI-Flex. & Acct Rural Education	1,500.0	525.2	35.0%	0.0	Grants to school districts
Temporary Relocation	1,400.0	440.9	31.5%	0.0	Formula grants for school emergency relocation
Recording - Blind and Dyslexic	1,218.8	1,218.0	99.9%	0.0	Grant to increase achievement of students with visual impairments
School Transportation	1,200.0	1,200.0	100.0%	109.1	Grants
Response to Intervention	1,128.0	0.0	0.0%	0.0	Grants
Principal Mentoring Prgm Grants	1,082.6	0.0	0.0%	0.0	Grants
Chicago Prin. & Admin Assoc.	1,000.0	0.0	0.0%	0.0	Grant to the Chicago Principals and Administrators Assoc.
Healthy Kids/Minds/Vision Cicero/Berwyn	1,000.0	1,000.0	0.0%	160.4	Grants
Emergency Financial Assistance	1,000.0	0.0	0.0%	0.0	Formula and loans to school districts
Transition to Teaching	1,000.0	523.8	52.4%	0.0	Grant to Illinois Resource Center
Aerospace Ed Initiative	920.0	920.0	100.0%	0.0	Grant to Chicago Aerospace States Association
ONPAR	800.0	724.8	90.6%	0.0	Grant
Illinois Breakfast Incentive	723.5	255.2	35.3%	0.0	Reimbursement and grant to public and private schools and child-care institutions
Minority Transition	578.8	543.0	93.8%	42.8	Grants - serves disadvantage students from selected Chicago HS and elem. schools

	<u>Funded Amount</u>	<u>Expended Year to Date</u>	<u>% Spent Year to Date</u>	<u>May Expenditures</u>	<u>Description</u>
Regional Supt. Initiatives	500.0	500.0	100.0%	20.8	Targeted Initiatives - to St. Clair & Madison ROE's
After School Matters	500.0	0.0	0.0%	0.0	Grant to After School Matters
Teach America	450.0	450.0	100.0%	0.0	Grant for Teach for America
Deaf/Blind	450.0	291.6	64.8%	79.5	Grant to Philip J. Rock Center
IDEA Model Outreach	400.0	0.0	0.0%	0.0	Competitive
IL Economic Education	250.0	250.0	100.0%	44.8	Grant to IL Council on Economic Education
Tax Equivalent Grants	222.6	222.6	100.0%	0.0	Grant to Chaney-Monge School District
Metro East Consortium	217.1	217.1	100.0%	21.7	Grant to provide staff development to increase student achievement in MECCA
Adler Planetarium	200.0	0.0	0.0%	0.0	Grants
Museum of Science & Industry	200.0	0.0	0.0%	0.0	Grant
Mental Health - Federal	166.3	25.8	15.5%	0.0	Grant
IL Teach Excellence-Teach of year	135.0	115.7	85.7%	19.3	Grants for Teacher of the Year
IL Gov't Internship	129.9	129.9	100.0%	17.0	Targeted Initiative - Springfield School Dist. 186
Supervisory Expense	102.0	102.0	100.0%	0.0	Supervisory Expense
Parental Participation Pilot	100.0	100.0	100.0%	0.0	Grants
Autism Training & Tech Assist.	100.0	100.0	100.0%	0.0	Grants to the IL Autism Training & Tech Assistance Program
ROE Bus Driver Training	70.0	70.0	100.0%	0.0	ROE Bus Driver Training
Charter Schools-Rev Loan Fund	20.0	0.0	0.0%	0.0	Other/Repayment of loans

**ILLINOIS STATE BOARD OF EDUCATION**  
**Financial Status Report**  
**July 1, 2008 through May 31, 2009**  
**(Fiscal Year 2009)**

	Appropriation Amount	Expenditures to Date	Unexpended Appropriation	Percentage spent YTD	Percentage Unexpended
<b><u>General Revenue Fund</u></b>					
Personal Services and Related Expenditures	17,604,460	15,946,526	1,657,934	90.58%	9.42%
Contractual Services	5,857,200	4,333,946	1,523,254	73.99%	26.01%
Travel	313,700	230,780	82,920	73.57%	26.43%
Commodities	59,100	52,809	6,291	89.36%	10.64%
Printing	85,200	69,048	16,152	81.04%	18.96%
Equipment	70,900	10,264	60,636	14.48%	85.52%
Telecommunications	468,600	275,986	192,614	58.90%	41.10%
Operation of Automotive Equipment	20,000	11,723	8,277	58.61%	41.39%
Lump Sums	33,502,000	14,813,020	18,688,980	44.22%	55.78%
<i>Sub-total</i>	57,981,160	35,744,102	22,237,058	61.65%	38.35%
Awards and Grants	3,507,494,393	2,618,862,869	888,631,524	74.66%	25.34%
<b>Total General Revenue Fund</b>	3,565,475,553	2,654,606,970	910,868,583	74.45%	25.55%
<b><u>Education Assistance Fund</u></b>					
Awards and Grants	825,602,546	781,740,406	43,862,141	94.69%	5.31%
<b>Total Education Assistance Fund</b>	825,602,546	781,740,406	43,862,141	94.69%	5.31%
<b><u>Common School Fund</u></b>					
Regional Superintendent Salaries	9,100,000	8,259,620	840,381	90.77%	9.23%
General State Aid	3,050,405,254	2,993,478,734	56,926,519	98.13%	1.87%
<b>Total Common School Fund</b>	3,059,505,254	3,001,738,354	57,766,900	98.11%	1.89%
<b><u>Teacher Certification Fee Revolving Fund</u></b>					
Lump Sums	1,600,000	1,208,733	391,267	75.55%	24.45%
<b>Total Teacher Certification Fee Revolving Fund</b>	1,600,000	1,208,733	391,267	75.55%	24.45%

**ILLINOIS STATE BOARD OF EDUCATION**  
**Financial Status Report**  
**July 1, 2008 through May 31, 2009**  
**(Fiscal Year 2009)**

	Appropriation Amount	Expenditures to Date	Unexpended Appropriation	Percentage spent YTD	Percentage Unexpended
<b><u>Drivers Education Fund</u></b>					
Personal Services and Related Expenditures	80,800	66,994	13,806	82.91%	<b>17.09%</b>
Awards and Grants	17,929,600	13,446,256	4,483,344	74.99%	<b>25.01%</b>
<b>Total Drivers Education Fund</b>	<b>18,010,400</b>	<b>13,513,250</b>	<b>4,497,150</b>	<b>75.03%</b>	<b>24.97%</b>
<b><u>School Dist. Emergency Financial Asst. Fund</u></b>					
Awards and Grants	1,000,000	-	1,000,000	0.00%	<b>100.00%</b>
<b><u>SBE Special Purpose Trust Fund</u></b>					
Lump Sums	15,500,000	3,260,349	12,239,651	21.03%	<b>78.97%</b>
<b><u>SBE Teacher Certification Institution Fund</u></b>					
Lump Sums	1,008,900	276,880	732,020	27.44%	<b>72.56%</b>
<b><u>SBE Federal Department of Agriculture Fund</u></b>					
Personal Services and Related Expenditures	5,015,800	4,222,544	793,256	84.18%	<b>15.82%</b>
Contractual Services	3,250,000	1,634,461	1,615,539	50.29%	<b>49.71%</b>
Travel	375,000	225,963	149,037	60.26%	<b>39.74%</b>
Commodities	85,000	16,322	68,678	19.20%	<b>80.80%</b>
Printing	150,000	29,486	120,514	19.66%	<b>80.34%</b>
Equipment	150,000	44,830	105,170	29.89%	<b>70.11%</b>
Telecommunications	50,000	-	50,000	0.00%	<b>100.00%</b>
<b>Sub-total</b>	<b>9,075,800</b>	<b>6,173,607</b>	<b>2,902,193</b>	<b>68.02%</b>	<b>31.98%</b>
Awards and Grants	528,294,000	460,023,080	68,270,920	87.08%	<b>12.92%</b>
<b>Total SBE Federal Department of Agriculture Fund</b>	<b>537,369,800</b>	<b>466,196,687</b>	<b>71,173,113</b>	<b>86.76%</b>	<b>13.24%</b>

**ILLINOIS STATE BOARD OF EDUCATION**  
**Financial Status Report**  
**July 1, 2008 through May 31, 2009**  
**(Fiscal Year 2009)**

	Appropriation Amount	Expenditures to Date	Unexpended Appropriation	Percentage spent YTD	Percentage Unexpended
<b><u>SBE Federal Agency Services Fund</u></b>					
Personal Services and Related Expenditures	120,900	109,944	10,956	90.94%	9.06%
Contractual Services	900,000	143,263	756,738	15.92%	84.08%
Travel	30,000	11,090	18,910	36.97%	63.03%
Commodities	15,000	10,001	4,999	66.67%	33.33%
Printing	7,000	-	7,000	0.00%	100.00%
Equipment	11,000	-	11,000	0.00%	100.00%
Telecommunications	9,000	-	9,000	0.00%	100.00%
<i>Sub-total</i>	1,092,900	274,298	818,602	25.10%	74.90%
Awards and Grants	4,500,000	618,605	3,881,395	13.75%	86.25%
<b>Total SBE Federal Agency Services Fund</b>	5,592,900	892,903	4,699,997	15.96%	84.04%
<b><u>SBE Federal Department of Education Fund</u></b>					
Personal Services and Related Expenditures	17,511,400	13,351,832	4,159,568	76.25%	23.75%
Contractual Services	14,700,500	5,026,430	9,674,070	34.19%	65.81%
Travel	1,375,000	504,501	870,499	36.69%	63.31%
Commodities	305,000	16,938	288,062	5.55%	94.45%
Printing	341,000	9,776	331,224	2.87%	97.13%
Equipment	455,000	47,685	407,315	10.48%	89.52%
Telecommunications	400,000	-	400,000	0.00%	100.00%
Lump Sums	23,780,300	10,110,847	13,669,453	42.52%	57.48%
<i>Sub-total</i>	58,868,200	29,068,009	29,800,191	49.38%	50.62%
Awards and Grants	2,170,989,900	1,141,008,648	1,029,981,252	52.56%	47.44%
<b>Total SBE Federal Department of Education Fund</b>	2,229,858,100	1,170,076,657	1,059,781,443	52.47%	47.53%
<b><u>Charter Schools Revolving Loan Program Fund</u></b>					
Awards and Grants	20,000	-	20,000	0.00%	100.00%
<b><u>School Infrastructure Fund</u></b>					
Personal Services and Related Expenditures	113,000	94,918	18,082	84.00%	16.00%

**ILLINOIS STATE BOARD OF EDUCATION**  
**Financial Status Report**  
**July 1, 2008 through May 31, 2009**  
**(Fiscal Year 2009)**

	Appropriation Amount	Expenditures to Date	Unexpended Appropriation	Percentage spent YTD	<b>Percentage Unexpended</b>
<b><u>School Technology Revolving Loan Program Fund</u></b>					
Awards and Grants	5,000,000	1,912,276	3,087,724	38.25%	<b>61.75%</b>
<b><u>Temporary Relocation Expenses Revolving Grant Fund</u></b>					
Awards and Grants	1,400,000	440,859	959,141	31.49%	<b>68.51%</b>
<b>ISBE TOTALS</b>	<b>10,267,056,453</b>	<b>8,095,959,242</b>	<b>2,171,097,211</b>	<b>78.85%</b>	<b>21.15%</b>

**ILLINOIS STATE BOARD OF EDUCATION**  
**Combined Financial Status Report**  
**July 1, 2008 through May 31, 2009**  
**(Fiscal Year 2009)**

	Appropriation Amount	Expenditures to Date (Direct)	Federal Indirect Cost Recovery Expenditures	Unexpended Appropriation	Percentage spent YTD	Percentage Unexpended
<b><u>All Funds</u></b>						
Personal Services and Related Expenditures	42,832,914	33,792,759	2,386,554	6,653,601	78.89%	15.53%
Contractual Services	25,297,065	11,138,100	589,365	13,569,600	44.03%	53.64%
Travel	2,135,217	972,334	41,517	1,121,366	45.54%	52.52%
Commodities	501,397	96,070	37,297	368,030	19.16%	73.40%
Printing	583,200	108,310	-	474,890	18.57%	81.43%
Equipment	704,677	102,780	17,777	584,120	14.59%	82.89%
Telecommunications	1,006,512	275,986	78,912	651,614	27.42%	64.74%
Operation of Automotive Equipment	20,000	11,723	-	8,277	58.61%	41.39%
Lump Sums	72,239,778	26,518,406	-	45,721,372	36.71%	63.29%
<b>Sub-total</b>	<b>145,320,760</b>	<b>76,167,890</b>	<b>3,151,422</b>	<b>69,152,870</b>	<b>52.41%</b>	<b>47.59%</b>
Awards and Grants	10,121,735,693	8,019,791,352	-	2,101,944,341	79.23%	20.77%
<b>Total All Funds</b>	<b>10,267,056,453</b>	<b>8,092,807,820</b>	<b>3,151,422</b>	<b>2,171,097,211</b>	<b>78.82%</b>	<b>21.15%</b>
<b><u>General Revenue Fund</u></b>						
Personal Services and Related Expenditures	17,604,460	15,946,526	-	1,657,934	90.58%	9.42%
Contractual Services	5,857,200	4,333,946	-	1,523,254	73.99%	26.01%
Travel	313,700	230,780	-	82,920	73.57%	26.43%
Commodities	59,100	52,809	-	6,291	89.36%	10.64%
Printing	85,200	69,048	-	16,152	81.04%	18.96%
Equipment	70,900	10,264	-	60,636	14.48%	85.52%
Telecommunications	468,600	275,986	-	192,614	58.90%	41.10%
Operation of Automotive Equipment	20,000	11,723	-	8,277	58.61%	41.39%
Lump Sums	33,502,000	14,813,020	-	18,688,980	44.22%	55.78%
<b>Sub-total</b>	<b>57,981,160</b>	<b>35,744,102</b>	<b>-</b>	<b>22,237,058</b>	<b>61.65%</b>	<b>38.35%</b>
Awards and Grants	3,507,494,393	2,618,862,869	-	888,631,524	74.66%	25.34%
<b>Total General Revenue Fund</b>	<b>3,565,475,553</b>	<b>2,654,606,970</b>	<b>-</b>	<b>910,868,583</b>	<b>74.45%</b>	<b>25.55%</b>
<b><u>Other State Funds</u></b>						
Personal Services and Related Expenditures	193,800	161,912	-	31,888	83.55%	16.45%
Lump Sums	18,108,900	4,745,962	-	13,362,938	26.21%	73.79%
<b>Sub-total</b>	<b>18,302,700</b>	<b>4,907,874</b>	<b>-</b>	<b>13,394,826</b>	<b>26.82%</b>	<b>73.18%</b>
Awards and Grants	3,910,457,400	3,799,278,151	-	111,179,250	97.16%	2.84%
<b>Total Other State Funds</b>	<b>3,928,760,100</b>	<b>3,804,186,024</b>	<b>-</b>	<b>124,574,076</b>	<b>96.83%</b>	<b>3.17%</b>
<b><u>Federal Funds</u></b>						
Personal Services and Related Expenditures	22,648,100	17,684,320	-	4,963,780	78.08%	21.92%
Contractual Services	18,850,500	6,804,154	-	12,046,346	36.10%	63.90%
Travel	1,780,000	741,554	-	1,038,446	41.66%	58.34%
Commodities	405,000	43,261	-	361,739	10.68%	89.32%
Printing	498,000	39,263	-	458,737	7.88%	92.12%
Equipment	616,000	92,516	-	523,484	15.02%	84.98%
Telecommunications	459,000	-	-	459,000	0.00%	100.00%
Lump Sums	23,780,300	10,110,847	-	13,669,453	42.52%	57.48%
<b>Sub-total</b>	<b>69,036,900</b>	<b>35,515,914</b>	<b>-</b>	<b>33,520,986</b>	<b>51.44%</b>	<b>48.56%</b>
Awards and Grants	2,703,783,900	1,601,650,333	-	1,102,133,567	59.24%	40.76%
<b>Total Federal Funds</b>	<b>2,772,820,800</b>	<b>1,637,166,247</b>	<b>-</b>	<b>1,135,654,553</b>	<b>59.04%</b>	<b>40.96%</b>

**ILLINOIS STATE BOARD OF EDUCATION**  
**Awards and Grants Expenditures**  
**July 1, 2008 through May 31, 2009**  
**(Fiscal Year 2009)**

<u><i>General Revenue Fund</i></u>	Appropriation Amount	Expenditures to Date	Unexpended Appropriation	Percentage spent YTD	Percentage Unexpended
Parental Participation Pilot Project	100,000	100,000	-	100.00%	<b>0.00%</b>
Regional Superintendents Initiatives	500,000	500,000	-	100.00%	<b>0.00%</b>
Rural Technology Initiatives	4,000,000	-	4,000,000	0.00%	<b>100.00%</b>
Targeted Interventions	4,000,000	2,610,000	1,390,000	65.25%	<b>34.75%</b>
Classroom Cubed	2,000,000	2,000,000	-	100.00%	<b>0.00%</b>
Hard to Staff Schools	3,000,000	-	3,000,000	0.00%	<b>100.00%</b>
Regional Superintendent Services-Bus Driver Training	70,000	70,000	-	100.00%	<b>0.00%</b>
Re-enrollment Student Program	4,000,000	3,730,000	270,000	93.25%	<b>6.75%</b>
Response to Intervention	1,128,000	-	1,128,000	0.00%	<b>100.00%</b>
Mentoring and After School Programs	9,700,000	1,204,346	8,495,654	12.42%	<b>87.58%</b>
Chicago Aerospace Initiative	920,000	920,000	-	100.00%	<b>0.00%</b>
Homeless Education	3,000,000	2,999,920	80	100.00%	<b>0.00%</b>
Adler Planetarium	200,000	-	200,000	0.00%	<b>100.00%</b>
Truant Alternative/Optional Education	20,078,100	19,947,764	130,336	99.35%	<b>0.65%</b>
Metro East Consortium/Student Advocacy	217,100	217,100	-	100.00%	<b>0.00%</b>
Jobs for Illinois Grads	4,000,000	4,000,000	-	100.00%	<b>0.00%</b>
ROE and ISC Operations Reimbursement	6,318,000	6,045,224	272,776	95.68%	<b>4.32%</b>
IL Governmental Student Internship	129,900	129,900	-	100.00%	<b>0.00%</b>
Standards, Assessments and Accountability	3,042,700	2,914,283	128,417	95.78%	<b>4.22%</b>
Teachers and Administrators Mentoring Program	13,378,800	7,484,793	5,894,007	55.95%	<b>44.05%</b>
Principal Mentoring Program	1,082,600	-	1,082,600	0.00%	<b>100.00%</b>
Chicago Principals and Administrators	1,000,000	-	1,000,000	0.00%	<b>100.00%</b>
Minority Transition Program Reimbursement	578,800	543,044	35,756	93.82%	<b>6.18%</b>
Philip Rock Center Reimbursement	3,577,800	3,577,800	-	100.00%	<b>0.00%</b>
Educational Materials Unit	2,121,000	2,121,000	-	100.00%	<b>0.00%</b>
Gifted Education	7,000,000	-	7,000,000	0.00%	<b>100.00%</b>
Technology for Success	2,719,700	2,388,336	331,364	87.82%	<b>12.18%</b>
Special Ed - Private Facility Tuition	151,600,000	131,929,316	19,670,684	87.02%	<b>12.98%</b>
Special Ed - Extraordinary	331,051,100	272,455,050	58,596,050	82.30%	<b>17.70%</b>
Special Ed - Personnel	426,100,000	339,921,254	86,178,746	79.77%	<b>20.23%</b>
Special Ed - Orphanage	101,800,000	80,582,509	21,217,491	79.16%	<b>20.84%</b>
Bilingual Education - Chicago	41,500,000	41,500,000	-	100.00%	<b>0.00%</b>
Bilingual Education - Downstate	34,152,000	22,298,175	11,853,825	65.29%	<b>34.71%</b>
Transportation - Regular/Vocational	339,500,000	250,972,639	88,527,361	73.92%	<b>26.08%</b>
Transportation - Special Education	383,300,000	276,847,961	106,452,039	72.23%	<b>27.77%</b>
State Free Lunch and Breakfast	26,300,000	24,252,487	2,047,513	92.21%	<b>7.79%</b>

**ILLINOIS STATE BOARD OF EDUCATION**  
**Awards and Grants Expenditures**  
**July 1, 2008 through May 31, 2009**  
**(Fiscal Year 2009)**

<i><u>General Revenue Fund, continued</u></i>	Appropriation Amount	Expenditures to Date	Unexpended Appropriation	Percentage spent YTD	Percentage Unexpended
Illinois Breakfast Incentive Reimbursement	723,500	255,193	468,307	35.27%	<b>64.73%</b>
Textbook Loan Program	42,826,500	-	42,826,500	0.00%	<b>100.00%</b>
Textbook Loan Program Reappropriation	39,431,100	39,431,960	(860)	100.00%	<b>0.00%</b>
Advanced Placement Classes	1,635,300	1,363,297	272,003	83.37%	<b>16.63%</b>
Grow Your Own Teachers	3,029,900	2,687,572	342,328	88.70%	<b>11.30%</b>
Parent/Guardian Transportation Reimbursement	11,954,700	11,911,210	43,490	99.64%	<b>0.36%</b>
State Charter Schools	3,421,500	2,567,042	854,458	75.03%	<b>24.97%</b>
Tax Equivalent Grants	222,600	222,600	-	100.00%	<b>0.00%</b>
GRF Transfer/Temporary Relocation Rev. Grant Fund	100,000	100,000	-	100.00%	<b>0.00%</b>
Recording for Blind & Dyslexic Grant	1,218,800	1,218,000	800	99.93%	<b>0.07%</b>
Vocational Ed. - Agriculture Education	3,381,200	3,276,200	105,000	96.89%	<b>3.11%</b>
Teach for America	450,000	450,000	-	100.00%	<b>0.00%</b>
Illinois Economic Education Program	250,000	250,000	-	100.00%	<b>0.00%</b>
Class Size Reduction Pilot Project	8,000,000	7,211,177	788,823	90.14%	<b>9.86%</b>
Autism Training & Tech Assistance	100,000	100,000	-	100.00%	<b>0.00%</b>
Children's Mental Health Partnership	2,803,200	1,464,814	1,338,386	52.26%	<b>47.74%</b>
Healthy Kids/Healthy Minds/Expanded Vision	3,000,000	3,000,000	-	100.00%	<b>0.00%</b>
Arts and Foreign Language	4,000,000	3,162,575	837,425	79.06%	<b>20.94%</b>
Grants for School Transportation	1,200,000	1,200,000	-	100.00%	<b>0.00%</b>
Healthy Kids/Healthy Minds/Expanded Vision	1,000,000	1,000,000	-	100.00%	<b>0.00%</b>
Alternative Education	18,535,500	17,005,562	1,529,938	91.75%	<b>8.25%</b>
Early Childhood Block Grant	376,192,500	353,789,279	22,403,221	94.04%	<b>5.96%</b>
ROE Services - Supervisory Expenses	102,000	102,000	-	100.00%	<b>0.00%</b>
Orphanage Tuition	11,600,000	8,724,360	2,875,640	75.21%	<b>24.79%</b>
Reorganization Incentive	7,850,000	5,482,819	2,367,181	69.84%	<b>30.16%</b>
Special Education - Summer School	11,000,000	10,854,376	145,624	98.68%	<b>1.32%</b>
Transitional Assistance	36,763,600	-	36,763,600	0.00%	<b>100.00%</b>
Fast Growth Schools	7,500,000	7,250,908	249,092	96.68%	<b>3.32%</b>
After School Matters	500,000	-	500,000	0.00%	<b>100.00%</b>
Museum of Science and Industry	200,000	-	200,000	0.00%	<b>100.00%</b>
ARRA	689,595,900	623,185,079	66,410,821	90.37%	<b>9.63%</b>
ARRA	274,163,600	-	274,163,600	0.00%	<b>100.00%</b>
<b>Total General Revenue Fund</b>	<b>3,495,917,000</b>	<b>2,611,528,923</b>	<b>884,388,077</b>	<b>74.70%</b>	<b>25.30%</b>

**ILLINOIS STATE BOARD OF EDUCATION**  
**Awards and Grants Expenditures**  
**July 1, 2008 through May 31, 2009**  
**(Fiscal Year 2009)**

	Appropriation Amount	Expenditures to Date	Unexpended Appropriation	Percentage spent YTD	Percentage Unexpended
<b><u>Education Assistance Fund</u></b>					
Teacher of the Year Program	135,000	115,710	19,290	85.71%	<b>14.29%</b>
Summer Bridges	22,238,100	18,756,247	3,481,853	84.34%	<b>15.66%</b>
Teacher Education	11,485,000	-	11,485,000	0.00%	<b>100.00%</b>
General State Aid	576,095,146	549,095,146	27,000,000	95.31%	<b>4.69%</b>
Career and Technical Education	38,562,100	38,082,341	479,759	98.76%	<b>1.24%</b>
School Safety & Educational Improvement Block Grant	74,841,000	74,841,000	0	100.00%	<b>0.00%</b>
Reading Improvement Block Grant	76,139,800	74,743,562	1,396,238	98.17%	<b>1.83%</b>
General State Aid - Hold Harmless	26,106,400	26,106,400	0	100.00%	<b>0.00%</b>
<b>Total Education Assistance Fund</b>	<b>825,602,546</b>	<b>781,740,406</b>	<b>43,862,141</b>	<b>94.69%</b>	<b>5.31%</b>
<b><u>Common School Fund</u></b>					
Regional Superintendent Salaries	9,100,000	8,259,620	840,381	90.77%	<b>9.23%</b>
General State Aid	3,050,405,254	2,993,478,734	56,926,519	98.13%	<b>1.87%</b>
<b>Total Common School Fund</b>	<b>3,059,505,254</b>	<b>3,001,738,354</b>	<b>57,766,900</b>	<b>98.11%</b>	<b>1.89%</b>
<b><u>Drivers Education Fund</u></b>					
Driver Education Grants	17,929,600	13,446,256	4,483,344	74.99%	<b>25.01%</b>
<b>Total Drivers Education Fund</b>	<b>17,929,600</b>	<b>13,446,256</b>	<b>4,483,344</b>	<b>74.99%</b>	<b>25.01%</b>
<b><u>School Dist. Emergency Financial Asst. Fund</u></b>					
School District Emergency Financial Assistance	1,000,000	-	1,000,000	0.00%	<b>100.00%</b>
<b>Total School Dist. Emergency Fin. Asst. Fund</b>	<b>1,000,000</b>	<b>-</b>	<b>1,000,000</b>	<b>0.00%</b>	<b>100.00%</b>
<b><u>SBE Federal Department of Agriculture Fund</u></b>					
Federal Nutrition Programs	525,000,000	460,023,080	64,976,920	87.62%	<b>12.38%</b>
ARRA	3,294,000	-	3,294,000	0.00%	<b>100.00%</b>
<b>Total SBE Federal Department of Agriculture Fund</b>	<b>528,294,000</b>	<b>460,023,080</b>	<b>68,270,920</b>	<b>87.08%</b>	<b>12.92%</b>

**ILLINOIS STATE BOARD OF EDUCATION**  
**Awards and Grants Expenditures**  
**July 1, 2008 through May 31, 2009**  
**(Fiscal Year 2009)**

	Appropriation Amount	Expenditures to Date	Unexpended Appropriation	Percentage spent YTD	Percentage Unexpended
<b><u>SBE Federal Agency Services Fund</u></b>					
Refugee Services	2,000,000	-	2,000,000	0.00%	<b>100.00%</b>
Learn and Serve America	2,500,000	618,605	1,881,395	24.74%	<b>75.26%</b>
<b>Total SBE Federal Agency Services Fund</b>	<b>4,500,000</b>	<b>618,605</b>	<b>3,881,395</b>	<b>13.75%</b>	<b>86.25%</b>
<b><u>SBE Federal Department of Education Fund</u></b>					
Title VI Rural and Low Income Students	1,500,000	525,178	974,822	35.01%	<b>64.99%</b>
Title III - English Language Acquisition	40,000,000	19,584,471	20,415,529	48.96%	<b>51.04%</b>
Integration of Mental Health	166,300	25,819	140,481	15.53%	<b>84.47%</b>
ONPAR	800,000	724,844	75,156	90.61%	<b>9.39%</b>
Enhancing Education Through Technology	20,000,000	9,460,552	10,539,448	47.30%	<b>52.70%</b>
Charter Schools	6,000,000	763,365	5,236,635	12.72%	<b>87.28%</b>
Advanced Placement Fee	2,000,000	746,783	1,253,217	37.34%	<b>62.66%</b>
Title I - Basic	675,000,000	444,049,108	230,950,892	65.79%	<b>34.21%</b>
Title I - Reading First	60,000,000	30,796,284	29,203,716	51.33%	<b>48.67%</b>
Title IV - Safe & Drug Free Schools	15,000,000	6,896,567	8,103,433	45.98%	<b>54.02%</b>
Title IV - 21st Century/Community Service	55,000,000	32,003,689	22,996,311	58.19%	<b>41.81%</b>
Title II - Teacher Quality	135,000,000	79,469,455	55,530,545	58.87%	<b>41.13%</b>
Title II - Transition to Teaching	1,000,000	523,777	476,223	52.38%	<b>47.62%</b>
Title II - Math/Science Partnerships	9,000,000	2,624,285	6,375,715	29.16%	<b>70.84%</b>
Title X - McKinney Homeless	3,250,000	2,391,790	858,210	73.59%	<b>26.41%</b>
IDEA - Preschool	25,000,000	15,793,004	9,206,996	63.17%	<b>36.83%</b>
IDEA - Improvement	2,500,000	1,171,564	1,328,436	46.86%	<b>53.14%</b>
IDEA	570,000,000	448,680,055	121,319,945	78.72%	<b>21.28%</b>
IDEA - Model Outreach	400,000	-	400,000	0.00%	<b>100.00%</b>
IDEA - Deaf/Blind	450,000	291,577	158,423	64.79%	<b>35.21%</b>
Career and Technical Education - Basic Perkins	55,000,000	40,356,125	14,643,875	73.37%	<b>26.63%</b>
Career and Technical Education - Tech Prep	5,000,000	3,795,896	1,204,104	75.92%	<b>24.08%</b>
Special Federal Congressional Initiatives	4,865,500	49,656	4,815,844	1.02%	<b>98.98%</b>
Title V - Innovative Programs	8,000,000	149,635	7,850,365	1.87%	<b>98.13%</b>
ARRA	2,020,000	-	2,020,000	0.00%	<b>100.00%</b>
ARRA	210,074,400	-	210,074,400	0.00%	<b>100.00%</b>
ARRA	253,240,000	74,853	253,165,147	0.03%	<b>99.97%</b>
ARRA	9,155,500	-	9,155,500	0.00%	<b>100.00%</b>

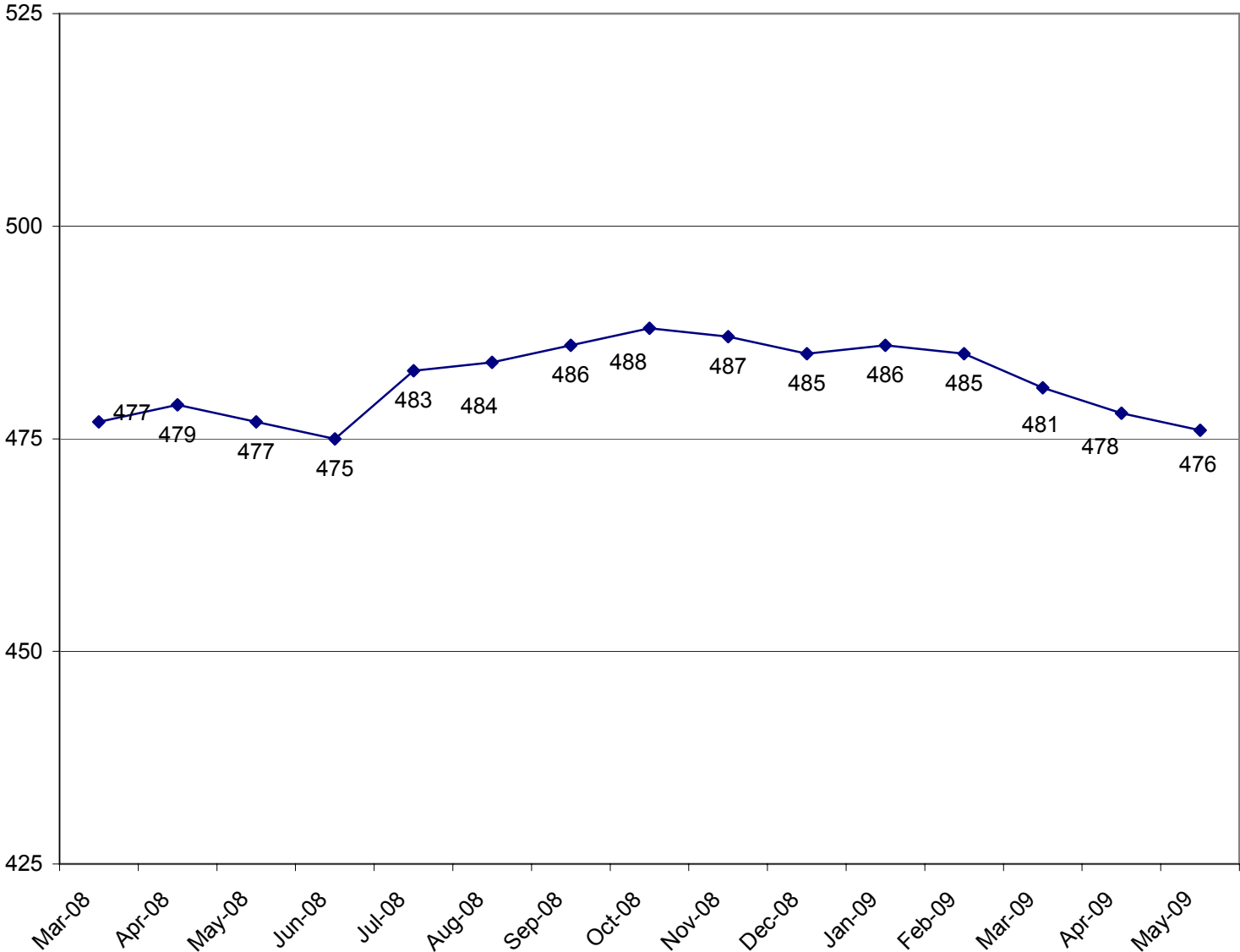
**ILLINOIS STATE BOARD OF EDUCATION**  
**Awards and Grants Expenditures**  
**July 1, 2008 through May 31, 2009**  
**(Fiscal Year 2009)**

	Appropriation Amount	Expenditures to Date	Unexpended Appropriation	Percentage spent YTD	Percentage Unexpended
<b><u>SBE Federal Department of Education Fund, continued</u></b>					
<b>Total SBE Federal Department of Education Fund</b>	2,169,421,700	1,140,948,332	1,028,473,368	52.59%	<b>47.41%</b>
<b><u>Charter Schools Revolving Loan Program Fund</u></b>					
Charter Schools Revolving Loans	20,000	-	20,000	0.00%	<b>100.00%</b>
<b>Total Charter Schools Rev. Loan Program Fund</b>	20,000	-	20,000	0.00%	<b>100.00%</b>
<b><u>School Technology Revolving Loan Program Fund</u></b>					
School Technology Revolving Loans	5,000,000	1,912,276	3,087,724	38.25%	<b>61.75%</b>
<b>Total School Technology Rev. Loan Program Fund</b>	5,000,000	1,912,276	3,087,724	38.25%	<b>61.75%</b>
<b><u>Temporary Relocation Expenses Revolving Grant Fund</u></b>					
Temporary Relocation Revolving Loans/Grants	1,400,000	440,859	959,141	31.49%	<b>68.51%</b>
<b>Total Temporary Relocation Exp. Rev. Grant Fund</b>	1,400,000	440,859	959,141	31.49%	<b>68.51%</b>
 <b>TOTAL AWARDS AND GRANTS - ALL FUNDS</b>	 10,108,590,100	 8,012,397,090	 2,096,193,010	 79.26%	 <b>20.74%</b>

**ILLINOIS STATE BOARD OF EDUCATION**  
**Comparative Statement of Expenditures to Date (May 31)**  
**Fiscal Years 2009 and 2008**

	<b>FY09</b>				<b>FY08</b>			
	Appropriation Amount	Expenditures to Date (Direct)	Federal Indirect Cost Reovery Expenditures	Percentage to Date	Appropriation Amount	Expenditures to Date (Direct)	Federal Indirect Cost Reovery Expenditures	Percentage to Date
<b>All Funds</b>								
Personal Services and Related Expenditures	42,832,914	33,792,759	2,386,554	84.47%	42,262,198	33,191,012	2,211,903	78.54%
Contractual Services	25,297,065	11,138,100	589,365	46.36%	23,155,042	11,147,169	579,242	48.14%
Travel	2,135,217	972,334	41,517	47.48%	2,157,578	959,912	28,878	44.49%
Commodities	501,397	96,070	37,297	26.60%	478,359	91,433	30,259	19.11%
Printing	583,200	108,310	-	18.57%	531,200	126,347	-	23.79%
Equipment	704,677	102,780	17,777	17.11%	1,118,473	306,960	385,373	27.44%
Telecommunications	1,006,512	275,986	78,912	35.26%	933,245	309,652	40,645	33.18%
Operation of Automotive Equipment	20,000	11,723	-	58.61%	22,000	17,567	-	79.85%
Lump Sums	72,239,778	26,518,406	-	36.71%	56,886,264	24,495,366	-	43.06%
<b>Sub-total</b>	<b>145,320,760</b>	<b>73,016,468</b>	<b>3,151,422</b>	<b>52.41%</b>	<b>127,544,359</b>	<b>70,645,418</b>	<b>3,276,300</b>	<b>55.39%</b>
Awards and Grants	10,121,735,693	8,019,791,352	-	79.23%	9,188,763,363	7,147,172,005	-	77.78%
<b>Total All Funds</b>	<b>10,267,056,453</b>	<b>8,092,807,820</b>	<b>3,151,422</b>	<b>78.85%</b>	<b>9,316,307,722</b>	<b>7,217,817,423</b>	<b>3,276,300</b>	<b>77.48%</b>
<b>General Revenue Fund</b>								
Personal Services and Related Expenditures	17,604,460	15,946,526	-	90.58%	16,770,500	15,489,054	-	92.36%
Contractual Services	5,857,200	4,333,946	-	73.99%	5,821,000	4,116,980	-	70.73%
Travel	313,700	230,780	-	73.57%	348,700	267,546	-	76.73%
Commodities	59,100	52,809	-	89.36%	59,100	56,648	-	95.85%
Printing	85,200	69,048	-	81.04%	83,200	56,502	-	67.91%
Equipment	70,900	10,264	-	14.48%	107,100	62,553	-	58.41%
Telecommunications	468,600	275,986	-	58.90%	433,600	263,131	-	60.69%
Operation of Automotive Equipment	20,000	11,723	-	58.61%	22,000	17,567	-	79.85%
Lump Sums	33,502,000	14,813,020	-	44.22%	18,474,364	11,900,441	-	64.42%
<b>Sub-total</b>	<b>57,981,160</b>	<b>35,744,102</b>	<b>-</b>	<b>61.65%</b>	<b>42,119,564</b>	<b>32,230,421</b>	<b>-</b>	<b>76.52%</b>
Awards and Grants	3,507,494,393	2,618,862,869	-	74.66%	2,351,678,880	1,754,690,026	-	74.61%
<b>Total General Revenue Fund</b>	<b>3,565,475,553</b>	<b>2,654,606,970</b>	<b>-</b>	<b>74.45%</b>	<b>2,393,798,444</b>	<b>1,786,920,447</b>	<b>-</b>	<b>74.65%</b>
<b>Other State Funds</b>								
Personal Services and Related Expenditures	193,800	161,912	-	83.55%	1,273,400	987,239	-	77.53%
Lump Sums	18,108,900	4,745,962	-	26.21%	17,907,900	4,960,167	-	27.70%
<b>Sub-total</b>	<b>18,302,700</b>	<b>4,907,874</b>	<b>-</b>	<b>26.82%</b>	<b>19,181,300</b>	<b>5,947,406</b>	<b>-</b>	<b>31.01%</b>
Awards and Grants	3,910,457,400	3,799,278,151	-	97.16%	4,737,654,483	3,914,394,556	-	82.62%
<b>Total Other State Funds</b>	<b>3,928,760,100</b>	<b>3,804,186,024</b>	<b>-</b>	<b>96.83%</b>	<b>4,756,835,783</b>	<b>3,920,341,963</b>	<b>-</b>	<b>82.41%</b>
<b>Federal Funds</b>								
Personal Services and Related Expenditures	22,648,100	17,684,320	-	78.08%	22,006,395	16,714,719	-	75.95%
Contractual Services	18,850,500	6,804,154	-	36.10%	16,754,800	7,030,188	-	41.96%
Travel	1,780,000	741,554	-	41.66%	1,780,000	692,366	-	38.90%
Commodities	405,000	43,261	-	10.68%	389,000	34,785	-	8.94%
Printing	498,000	39,263	-	7.88%	448,000	69,845	-	15.59%
Equipment	616,000	92,516	-	15.02%	626,000	244,407	-	39.04%
Telecommunications	459,000	-	-	0.00%	459,000	46,521	-	10.14%
Lump Sums	23,780,300	10,110,847	-	42.52%	23,780,300	10,911,058	-	45.88%
<b>Sub-total</b>	<b>69,036,900</b>	<b>35,515,914</b>	<b>-</b>	<b>51.44%</b>	<b>66,243,495</b>	<b>35,743,891</b>	<b>-</b>	<b>53.96%</b>
Awards and Grants	2,703,783,900	1,601,650,333	-	59.24%	2,099,430,000	1,478,087,423	-	70.40%
<b>Total Federal Funds</b>	<b>2,772,820,800</b>	<b>1,637,166,247</b>	<b>-</b>	<b>59.04%</b>	<b>2,165,673,495</b>	<b>1,513,831,313</b>	<b>-</b>	<b>69.90%</b>

**ILLINOIS STATE BOARD OF EDUCATION  
HEADCOUNT AS OF MAY 2009**



**ILLINOIS STATE BOARD OF EDUCATION  
AGENCY STAFF DETAIL AS OF MAY 2009**

	Mgmt.	Prof.	Support	GRF	Non-GRF	Total
<b>SUPERINTENDENT'S OFFICE</b>						
State Superintendent	1	0	3	4	0	4
Board Services	0	1	1	2	0	2
General Counsel	2	10	2	14	0	14
Governmental Relations	0	2	0	1	1	2
Internal Audit	<u>1</u>	<u>2</u>	<u>1</u>	<u>2</u>	<u>2</u>	<u>4</u>
Sub-Total	4	15	7	23	3	26
<b>HUMAN RESOURCES</b>						
Human Resources	<u>4</u>	<u>3</u>	<u>7</u>	<u>11</u>	<u>3</u>	<u>14</u>
Sub-Total	4	3	7	11	3	14
<b>PUBLIC INFORMATION</b>						
Public Information	<u>1</u>	<u>5</u>	<u>1</u>	<u>6</u>	<u>1</u>	<u>7</u>
Sub-Total	1	5	1	6	1	7
<b>SPECIAL EDUCATION SERVICES</b>						
Special Education Admin.	1	0	1	0	2	2
Special Education Services - Spfld.	2	25	6	2	31	33
Special Education Services - Chgo.	<u>2</u>	<u>19</u>	<u>2</u>	<u>0</u>	<u>23</u>	<u>23</u>
Sub-Total	5	44	9	2	56	58
<b>EDUCATIONAL PROGRAMS</b>						
Career & Technical Education	1	8	2	5	6	11
Early Childhood	1	9	2	6	6	12
English Language Learning	1	7	1	3	6	9
Grants and Programs	<u>2</u>	<u>18</u>	<u>3</u>	<u>1</u>	<u>22</u>	<u>23</u>
Sub-Total	5	42	8	15	40	55
<b>STANDARDS &amp; ASSESSMENTS</b>						
Standards & Assessment Admin.	1	1	1	2	1	3
Data Analysis & Progress Reporting	1	8	2	9	2	11
Assessment	2	11	2	4	11	15
Curriculum & Instruction	<u>2</u>	<u>14</u>	<u>4</u>	<u>8</u>	<u>12</u>	<u>20</u>
	6	34	9	23	26	49

	Mgmt.	Prof.	Support	GRF	Non-GRF	Total
<b>SCHOOL SUPPORT SERVICES FOR ALL SCHOOLS</b>						
School Support Admin	1	0	0	1	0	1
Educator Certification	1	9	11	8	13	21
Educator & School Development	2	18	10	18	12	30
Nutrition Programs	<u>2</u>	<u>37</u>	<u>5</u>	<u>2</u>	<u>42</u>	<u>44</u>
	6	64	26	29	67	96
<b>FISCAL SUPPORT SERVICES</b>						
Fiscal Support Services Admin.	1	0	0	1	0	1
Budget & Financial Management	0	7	1	7	1	8
Data Systems	3	29	2	20	14	34
Technology Support	1	18	3	15	7	22
Fiscal & Procurement	2	12	6	12	8	20
Administrative Services	1	3	13	12	5	17
Funding and Disbursements	2	20	10	13	19	32
School Business Services	1	13	2	15	1	16
External Assurance	<u>1</u>	<u>18</u>	<u>2</u>	<u>6</u>	<u>15</u>	<u>21</u>
Sub-Total	12	120	39	101	70	171
<b>GRAND TOTAL, ALL CENTERS</b>	<b>43</b>	<b>327</b>	<b>106</b>	<b>210</b>	<b>266</b>	<b>476</b>
	9%	69%	22%	44%	56%	100%

**ILLINOIS STATE BOARD OF EDUCATION**  
**Personnel Transactions As of May 2009**

**Transaction Data:**

	<u>FY01</u>	<u>FY02</u>	<u>FY03</u>	<u>FY04</u>	<u>FY05</u>	<u>FY06</u>	<u>FY07</u>	<u>FY08</u>	<u>FY09</u>
<b>Begin Year</b>	787	739	650	522	471	487	478	463	475
<b>Hire Externally</b>	27	5	29	20	77	37	44	54	27
<b>Recall</b>	0	0	11	19	4	4	0	1	1
<b>Retire</b>	-35	-37	-128	-34	-30	-25	-20	-19	-12
<b>Resign</b>	-35	-21	-13	-24	-31	-17	-33	-19	-10
<b>Discharge</b>	-2	-9	-2	-2	-4	-7	-5	-4	-4
<b>Layoff</b>	0	-25	-22	-30	0	0	0	0	0
<b>Death</b>	-3	-2	-3	0	0	-1	-1	0	0
<b>Other</b>	<u>0</u>	<u>0</u>	<u>0</u>	<u>0</u>	<u>0</u>	<u>0</u>	<u>0</u>	<u>-1</u>	<u>-1</u>
<b>End Year</b>	739	650	522	471	487	478	463	475	476