

ILLINOIS STATE BOARD OF EDUCATION

100 N. First Street
Springfield, Illinois

March 18-19, 2009

NOTE: Staff presentations and detailed Board discussion typically take place during Committee meetings one month prior to State Board action in the plenary session.

All open meetings will be audio cast on the Internet at: www.isbe.net

WEDNESDAY, MARCH 18, 2009

- 10:30 a.m. Board Operations Committee of the Whole**
Board Room, 4th Floor
- 11:30 a.m. Break for Lunch**
- Noon Governor's Budget Address**
(House Gallery tickets requested)
- *2:00 p.m. Education Policy Planning Committee of the Whole** (*immediately following Budget Address*)
Board Room, 4th Floor
- *3:15 p.m. Finance & Audit Committee of the Whole**
Board Room, 4th Floor

* The meeting will begin at the conclusion of the previous session.

THURSDAY, MARCH 19, 2009

- 8:30 a.m. Governmental Relations Committee of the Whole**
Board Room, 4th Floor
- 9:30 a.m. Ad Hoc Rules Committee of the Whole**
Board Room, 4th Floor
- 10:00 a.m. ISBE Plenary Session**
Board Room, 4th Floor

* The meeting will begin at the conclusion of the previous session.

All State Board of Education meetings listed on this agenda will be accessible to persons with disabilities. Persons planning to attend who need special accommodations should contact the Board office no later than the date prior to the meeting. Contact the Superintendent's office at the State Board of Education, Phone: 217-782-2221; TTY/TDD: 17-782-1900; Fax: 217-785-3972.

NOTE: Chairman Ruiz may call to order the Board's plenary session early for the sole purpose of hearing a motion to go into closed session. In such case, the plenary session will reconvene for action items at the time posted. Chairman Ruiz may also call for a break in the plenary session on Thursday at which time the Board will go into closed session.

**ILLINOIS STATE BOARD OF EDUCATION
PLENARY SESSION
Board Room, 4th Floor
100 North First Street, Springfield, Illinois**

**March 19, 2009
10:00 a.m.**

(This meeting will begin immediately following the previous session.)

**NOTE: Staff presentations and detailed Board discussion typically take place during
Committee meetings one month prior to State Board action in the plenary session.**

All meetings will be audio cast on the Internet at www.isbe.net

A. Roll Call/Pledge of Allegiance

1. Consideration of and Possible Actions on Any Requests for Participation in Meeting by Other Means

B. Resolutions & Recognition

10:00 – 10:10 a.m.

- a. Niki Annes, 2009 Art Poster Contest Winner (McAuley Liberal Arts H.S., Chicago) (*p. 4*)
- b. Rose Schoening, school Nurse, Hadley Jr. High, Glen Ellyn (*Plenary p. 5*)
- c. Harold Krainock, School Board Member, Danville (*Plenary p. 6*)

C. Public Participation

10:10 – 10:50 a.m.

D. Superintendent's Report

*** Consent Agenda**

All action consideration items listed with an asterisk (*) are considered to be routine and will be enacted in one motion and vote. Any board member who wishes separate discussion on any item listed on the consent agenda may remove that item from the consent agenda, in which event, the item will be considered in its normal sequence.

Action Considerations

consent agenda items: 10:50 – 11:05 a.m.

- *1. Approval of Minutes
 - a. February 19, 2009 Board Meeting (*Plenary pp. 7-14*)
 - b. Early Childhood Work Study Notes, February 18, 2009 (*Plenary pp. 15-16*)
 - c. March 2, 2009 Special Meeting (*Plenary pp. 17-19*)
- *2. Rules for Initial Review
 - a. Part 575 (School Technology Program) (*Rules pp. 4-8*)
- *3. Contracts & Grants Over \$1 Million
 - a. Principal Mentoring Program – Illinois Principals Association Contract Amendments (*FAC pp. 4-5*)
 - b. World-Class Innovations in Developing Assessment (WIDA) Consortium (*FAC pp. 6-7*)
Memorandum of Understanding (ACCESS for ELLs®)
 - c. Measurement Incorporated – ISAT Writing Contract (*FAC pp. 8-9*)
 - d. State Career & Technical Education Improvement & Agriculture Education (*FAC pp. 10-11*)
- *4. Revision of 2009 Calendar of Meetings (*Board Operations pp. 8-9*)
- *5. Teacher Certification Board Recommendations for Program Approvals (*Plenary pp. 20-23*)
 - a. Lewis University (continuing approval)
 - (1) Elementary Education – Bachelors
 - (2) Science – Biology
 - (3) Science – Chemistry
 - (4) Science – Physics
 - (5) Principal
 - (6) Superintendent
 - b. McKendree College (continuing approval)
 - (1) Mathematics
 - (2) Science – Biology
 - (3) Science – Chemistry
 - c. McKendree College (probation)
 - (1) Physical Education
 - d. National-Louis University (provisional approval)
 - (1) LBS II – Technology Specialist
 - (2) LBS II – Curriculum Adaptation Specialist
- *6. Approve Annual Financial Profile of School Districts (*FAC pp. 12-14*)

End of consent agenda

7. Determination of Prairie Crossing Charter Renewal (***EPPC pp. 4-12***) 11:05 – 11:15 a.m.
8. Closed Session Minutes (as needed following closed session)

E. New Business

F. Announcements and Reports

11:15 – 11:55 a.m.

1. IBHE Liaison Report (*Dr. Proshanta Nandi*) 11:15 – 11:25 a.m.
2. Superintendent's Announcements 11:25 – 11:35 a.m.
3. Chairman's Report 11:35 – 11:45 a.m.
4. Member Reports 11:45 – 11:55 a.m.

G. Information Items

1. ISBE Fiscal & Administrative Monthly Reports (***Plenary pp. 24-51***)

H. Adjourn

NOTE: Chairman Ruiz may call to order the Board's plenary session early for the sole purpose of hearing a motion to go into closed session. In such case, the plenary session will reconvene at the time announced. Chairman Ruiz may also call for a break in the plenary session at which time the Board will go into closed session.

DRAFT

Illinois State Board of Education

RESOLUTION

RECOGNIZING NIKI ANNES

Whereas, GOVERNOR PAT QUINN of the State of Illinois has proclaimed March 16-22, 2009, as ILLINOIS ARTS EDUCATION WEEK and encourages all citizens to celebrate the arts with meaningful student activities and programs that demonstrate learning and understanding in the visual and performing arts; and

Whereas, NIKI ANNES, an eighteen-year-old senior Advanced Placement Studio Art student from Mother McAuley Liberal Arts High School, Chicago, Illinois, received first place from more than 200 entries in a poster contest sponsored by the Illinois Alliance for Arts Education in conjunction with the Illinois State Board of Education and the Governor’s Office; and

Whereas, NIKI ANNES has exhibited skill in combining digital and color manipulations to transform ordinary subject matter into a futuristic abstraction which coordinates with the contest theme. Her artwork provides the means of understanding and experiencing herself and others through individual and joint visions. Illinois arts education includes experiences in dance, drama, music, and the visual art; and

Whereas, ART INSTRUCTOR KATHLEEN GORDON DAVIS has aided and guided NIKI in her successes as an art student; and

Whereas, PRINCIPAL CHRISTINE MELONE, SUPERINTENDENT OF SCHOOLS SR. M. PAUL MCCAUGHEY, O.P., AND THE ARCHDIOCESE OF CHICAGO recognize the value of the arts for all students to assure the development of self-expression, discipline, and a heightened appreciation of beauty and cross-cultural understanding.

Therefore be it Resolved by the ILLINOIS STATE BOARD OF EDUCATION that NIKI ANNES is hereby recognized on this 19th day of March 2009 for the outstanding design concept reflected in her poster submitted in the 2009 “Envisioning Our Future through the Arts” contest.

Jesse H. Ruiz, Chairman

Christopher J. Ward, Vice Chairman

Vinni M. Hall, Secretary

Andrea S. Brown, Member

Dean E. Clark, Member

David L. Fields, Member

Brenda J. Holmes, Member

Joyce E. Karon, Member

Lanita J. Koster, Member

DRAFT

Illinois State Board of Education

RESOLUTION

**HONORING
ROSE SCHOENING**

Whereas, **ROSE SCHOENING** is a trained and licensed Registered Nurse at **HADLEY JUNIOR HIGH SCHOOL** in **GLEN ELLYN, ILLINOIS**, who has devoted her life to helping others; and

Whereas, because of her knowledge and experience, **ROSE** has the ability to aid people who have fallen ill; and

Whereas, **ROSE'S** dedication to serving other people has led her to take additional training and learn new skills; and

Whereas, these additional skills were put into play in October 2007 when **ROSE SCHOENING'S** quick thinking and fast actions helped save the life of a student; and

Whereas, the **SEVENTH-GRADE STUDENT, DANNY KELLEHER**, collapsed after running in gym class and **ROSE** immediately recognized the severity of **DANNY'S** problem; and

Whereas, **ROSE** used the school's Automated External Defibrillator to save **DANNY'S** life; and

Therefore be it Resolved that the **ILLINOIS STATE BOARD OF EDUCATION** extends its sincere appreciation and gratitude to **ROSE SCHOENING** on this the 19th day of March, 2009, for her commitment to the health and safety of the students of Illinois.

Jesse H. Ruiz, Chairman

Christopher J. Ward, Vice Chairman

Vinni M. Hall, Secretary

Andrea S. Brown, Member

Dean E. Clark, Member

David L. Fields, Member

Brenda J. Holmes, Member

Joyce E. Karon, Member

Lanita J. Koster, Member

DRAFT

Illinois State Board of Education

**HONORING
HAROLD E. “PETE” KRAINOCK**

Whereas, **HAROLD E. “PETE” KRAINOCK** was elected to the Board of Education of Danville School District #118 on November 4, 1997, has since proven to be a very valuable member of the District 118 team, and is a true supporter of students and the district in every way; and

Whereas, **PETE KRAINOCK** is a hardworking individual who is a joy to be around. He willingly volunteers his services in many ways throughout the Danville community, always with a smile on his face.

Whereas, although a retired businessman, **MR. KRAINOCK** remains active and industrious, continuing to serve the community as president of CRIS Senior Services, Member of the Danville Public School Foundation, Volunteer and organizer for the National Association of Intercollegiate Athletics Basketball Tournament in Danville, Member and former elder of First Presbyterian Church, and Volunteer for special needs students at Danville High School; and

Whereas, historically, **PETE KRAINOCK** has assisted with the Splash Program for seven years, teaching seven and eight-year-old children basic water safety skills. **PETE** is a past member and Past President of the Golden Kiwanis Club, volunteered for Meals on Wheels, and was a volunteer assistant football coach at Danville High School; and

Whereas, although throughout his tenure as a member of the Board of Education he has faced difficult challenges and made many complex decisions on behalf of District 118, he has always shown compassion and empathy for students, staff and administration. He is dependable, loyal, honest and delightful.

Therefore be it Resolved that the ILLINOIS STATE BOARD OF EDUCATION extends its sincere appreciation and gratitude to **HAROLD E. “PETE” KRAINOCK** on this the 19th day of March, 2009, for his commitment to the students of Illinois.

Jesse H. Ruiz, Chairman

Christopher J. Ward, Vice Chairman

Vinni M. Hall, Secretary

Andrea S. Brown, Member

Dean E. Clark, Member

David L. Fields, Member

Brenda J. Holmes, Member

Joyce E. Karon, Member

Lanita J. Koster, Member

**Illinois State Board of Education Meeting
February 19, 2009
Illinois State Board of Education
100 North First Street
Springfield, Illinois**

<p>ROLL CALL/PLEDGE OF ALLEGIANCE</p>	<p>Dr. Christopher Ward, Vice Chairman, called the meeting to order at 9:05 a.m. Vice Chairman Ward asked Ms. Jean Ladage, Assistant to the Board, to call the roll. A quorum was present. Dr. Christopher Koch, State Superintendent of Education, was also in attendance.</p> <p>Vice Chairman Ward announced that the Board meeting was being audio-cast live over the Internet.</p> <p><u>Members Present:</u> Dr. Christopher Ward, Vice Chairman Dr. Vinni Hall, Secretary Dr. Andrea Brown Mr. Dean Clark Dr. David Fields Ms. Brenda Holmes Ms. Joyce Karon Ms. Lanita Koster</p> <p><u>Members Absent:</u> Mr. Jesse Ruiz, Chairman</p>
<p>RESOLUTIONS & RECOGNITIONS</p>	<p>Mr. Clark moved that the State Board of Education adopt the resolutions recognizing the following schools:</p> <p>Dr. Brown presented the resolution to Superintendent Larry Dobbs recognizing Ridgeview Elementary School in Colfax as being the first Illinois school to receive the Silver Level Award for the U.S. Healthier School Challenge Silver Level Award. Ms. Holmes read the resolution recognizing Bushnell-Prairie City Elementary School for also being named as a recipient of the U.S. Healthier School Challenge Silver Level Award. The Illinois State Board of Education extends its sincere appreciation to the administration and staff at these two schools for their commitment and dedication to providing the healthiest learning environment possible.</p> <p>Dr. Hall seconded the motion and it passed with a unanimous voice vote.</p> <p>Dr. Larry Dodds, Superintendent of Ridgeview Community Unit District #19 spoke on the district's commitment to the Wellness Policy, and the process to become a healthier school. Dr. Dodds stated that the United States Department of Education will be visiting the school on March 17, 2009 for a formal presentation of the award. Dr. Koch he is looking forward to attending the award presentation.</p> <p>Mark Williams, Division Administrator of Career & Technical Education presented the Board with a Governor's Proclamation for Entrepreneurship Education Week. Illinois Entrepreneurship Education Week is February 21-28, 2009.</p>
<p>PUBLIC PARTICIPATION</p>	<p>Dr. Roger Thornton, Retired Superintendent of Township High School District #211 was accompanied by Dr. Nancy Robb, Superintendent and Mr. Jeff Butzen. Dr. Thornton stated he feels that only the State Board can respond to District #211's appeal of its 2008 Prairie State Achievement Exam (PSAE) scores for the district, school, and students.</p>

	<p>District #211 asks for decisive action and transparency in the scoring and reporting of the PSAE scores. Mr. Thornton asked that the Board hear their appeal, consider its claim, and then discuss with them and other interested districts potential remedies for the future.</p> <p>Dr. Koch stated that the district's appeal is asking that the Agency reverse prior years of data. Doing so would have many implications for the state assessment system. Dr. Koch explained that the Board and Agency are approaching the issue of coherence between standards, curriculum, assessment and college entry through the America Diploma Project.. Dr. Koch noted that he has invited Superintendent Nancy Robb to be on the State Testing Review Committee so District #211 can be directly involved in the work of bringing coherence into the system.</p> <p>Superintendent Koch commented that the PSAE consists of the ACT, Work Keys and additional items and the federal government has indicated that the PSAE aligns to our standards and has approved its use. We do not at this time have another test to use and test development takes considerable time. There is a movement toward national assessments and national standards there will likely be incentives coming from the USDE for states that are doing work on ADP and longitudinal data.</p> <p>Superintendent Nancy Robb commented that they are pleased with the American Diploma Project (ADP) and District #211 staff is working with them, but there is still not an assessment piece. Dr. Robb asked if they could have something that would give them a criterion reference.</p> <p>Dr. Koch responded that it will take 18 to 24 months for the ADP process and we are already 6 months into the process. Dr. Robb expressed concern that, during that window, many schools will be considered failing.</p> <p>Superintendent Koch said that he knows that Secretary Duncan is aware of these issues and is concerned. The Council for Chief State School Officers has taken a strong position on the fact that there has not been growth shown or allowed with the current configuration to the degree that we would like. Flexibility could come sooner through the federal regulation process, but it is not there now.</p> <p>Dr. Robb said that they are here today to help us. Dr. Koch said he and the Board want these issues addressed as well. The Board appreciates the work that District #211 has done.</p> <p>Dr. Thornton stated that they are not asking the State Board to ignore Counsel, but the State Board has not acted on this and that is an issue for District # 211 as they try to move forward. Dr. Thornton thanked the Board for their time.</p>
<p>CONSENT AGENDA</p>	<p>Vice Chairman Ward commented that all items listed with an asterisk (*) on the agenda are considered to be routine and will be enacted in one motion and vote. Any Board members who wish separate discussion on any item listed on the consent agenda may remove that item from the consent agenda, in which event the item will be considered in its normal sequence.</p> <p><u>Motion:</u></p>

Dr. Hall moved that the State Board of Education approve the consent agenda items excluding agenda item D 6. Revision of 2009 Calendar of Meetings. Item D 7.a(5) Teacher Certification Board Recommendations for the University of St. Francis has been pulled from the consent agenda item and will be discussed and considered separately. Ms. Holmes seconded the motion and it passed with a unanimous roll call vote

The following motions were approved by action taken in the consent agenda motion:

Approval of Minutes

The State Board of Education hereby approves the minutes for the January 27, 2009 Board meeting.

Rules for Initial Review

Part 140 (Calculation of Excess Cost Under Section 18-3 of the School Code)

The State Board of Education hereby authorizes the solicitation of public comment on the proposed rulemaking for Calculation of Excess Cost Under Section 18-3 of the School Code (23 Illinois Administrative Code 140), including publication of the proposed amendments in the Illinois Register.

Part 240 (Alternative Learning Opportunities Program)

The State Board of Education hereby authorizes the solicitation of public comment on the proposed rulemaking for Alternative Learning Opportunities Program (23 Illinois Administrative Code 240), including publication of the proposed amendments in the Illinois Register.

Part 405 (Payments to Certain Facilities under section 14-7.05)

The State Board of Education hereby authorizes the solicitation of public comment on the proposed rulemaking for Payments to Certain Facilities Under Section 14-7.05 of the School Code (23 Illinois Administrative Code 405), including publication of the proposed amendments in the Illinois Register.

Rules for Adoption

Part 1 (Public Schools Evaluation, Recognition and Supervision)

The State Board of Education hereby adopts the proposed rulemaking for: Public Schools Evaluation, Recognition and Supervision (23 Illinois Administrative Code 1). Further, the Board authorizes the State Superintendent of Education to make such technical and nonsubstantive changes, as the State Superintendent may deem necessary in response to suggestions or objections of the Joint Committee on Administrative Rules.

Part 25 (Certification)

The State Board of Education hereby adopts the proposed rulemaking for: Certification (23 Illinois Administrative Code 25). Further, the Board authorizes the State Superintendent of Education to make such technical and nonsubstantive changes, as the State Superintendent may deem necessary in response to suggestions or objections of the Joint Committee on Administrative Rules.

Contracts and Grants Over \$1 Million

Contract Renewal: Target Area Developmental Corporation

(Grow Your Own)

The State Board of Education hereby authorizes agency staff to renew the contract in FY 10 for \$350,000 with the Target Area Developmental Corporation to administer the GYO Statewide Outreach Program (subject to appropriation). The total contract will not exceed \$1,896,825.

**Contract: Southern Illinois University – Carbondale
(School Meals Initiative Review)**

The State Board of Education hereby authorizes agency staff to renew the contract on FY10 for \$195,475 with Southern Illinois University Carbondale to contract for and conduct School Meal Initiative Reviews. The total contract will not exceed \$1, 011,900.

Contract: Harte Hanks (Third Party Assessment Oversight)

The State Board of Education hereby authorizes agency staff to amend the contract for an increase of \$360,000 with Harte-Hanks, Inc. for oversight management. The total contract will not exceed \$1, 011,900.

FY10 RFP: Preschool for All Children Ages 3-5 years: FY10.

The State Board of Education approves the release of the Request for Proposals (RFP): Preschool For All Children Ages 3-5 Years. Proposals received will be evaluated in comparison with other proposals received by the Illinois State Board of Education using both quantitative and qualitative criteria. Final determination for selection will be mad by the State Superintendent of Education and will be based upon recommendations resulting from the evaluation/review process.

FY10 RFP: Prevention Initiative Birth to 3 Years: FY10

The State Board of Education approves the release of the Request for Proposals (RFP): Prevention Initiative Birth to 3 Years: FY10. Proposals received will be evaluated in comparison with other proposals received by the Illinois State Board of Education using both quantitative and qualitative criteria. Final determination for selection will be made by the State Superintendent of Education and will be based upon recommendations resulting from the evaluation/review process.

Spring Mandate Waiver Report

The State Board of Education hereby forwards the 100 waiver requests summarized in the Spring 2009 report to the General Assembly without comment.

Partnership for 21st Century Skills

The State Board of Education hereby supports the application for Illinois to be considered for recognition as a “P 21 Leadership State”.

**Teachers Certification Board Recommendations
Board Accreditation and Program Approvals**

Motion #1 Aurora University

The State Board of Education hereby assigns the status of "continuing accreditation" to **Aurora University**. This action authorizes the institution to conduct its programs and recommend candidates for certification by entitlement until the time of the institution's next scheduled review.

The State Board of Education hereby assigns “continuing approval” to the following professional education preparation programs for **Aurora**

University as it meets the applicable Illinois content area standards.

- General Administrative – Principal
- Superintendent
- Elementary Education
- English Language Arts
- Mathematics
- Reading Specialist
- School Social Worker

Motion#2 Erickson Institute

The State Board of Education hereby assigns the status of "continuing accreditation" to **Erickson Institute**. This action authorizes the institution to conduct its programs and recommend candidates for certification by entitlement until the time of the institution's next scheduled review.

The State Board of Education hereby assigns "continuing approval" to the following professional education preparation programs for **Erickson Institute** as it meets the applicable Illinois content area standards.

- Early Childhood

Motion #3 Quincy University

The State Board of Education hereby assigns the status of "accreditation with conditions" to **Quincy University**. This action requires that the unit make adjustments so as to satisfy the conditions expressed within six months, and submit documentation that addresses the unmet standards as well as any other areas for improvement within that time. Quincy University is authorized to conduct its approved programs and to recommend candidates for certification by entitlement. Quincy University shall, within 30 days after receipt of the State Board's decision, provide written notification to the candidates enrolled in the unit's programs to this effect.

The State Board of Education hereby assigns "continuing approval" to the following professional education preparation programs for **Quincy University** as it meets the applicable Illinois content area standards.

- General Administrative – Principal
- Elementary Education
- English Language Arts
- Mathematics
- Music Education
- Physical Education
- Science – Biology
- Social Science – History
- LBS I
- Visual Arts
- School Counselor

Motion # 4 Trinity Christian College

The State Board of Education hereby assigns the status of "continuing accreditation" to **Trinity Christian College**. This action authorizes the institution to conduct its programs and recommend candidates for certification by entitlement until the time of the institution's next scheduled review.

The State Board of Education hereby assigns "continuing approval" to the following professional education preparation programs for **Trinity**

	<p>Christian College as it meets the applicable Illinois content area standards.</p> <ul style="list-style-type: none"> • Business Education • Elementary Education • English Language Arts • Foreign Language - Spanish • Mathematics • Music Education • Physical Education • Science – Biology • Science - Chemistry • Social Science – History • LBS I • Visual Arts <p style="text-align: center;"><u>Program Approval Recommendations</u></p> <p>The State Board of Education provisionally approves the Loyola University Chicago Learning Behavior Specialist II with an endorsement in Behavior Intervention Specialist program, thereby authorizing the university to conduct the program and to recommend candidates for certification by entitlement until the time of the institution's next accreditation review.</p> <p>(END OF THE CONSENT AGENDA)</p>
<p>D7. a.(5) Teachers Certification Board Recommendations: University of St. Francis</p>	<p>Dr. Hall moved that the State Board of Education hereby assigns the status of "continuing accreditation" to the University of St. Francis. This action authorizes the institution to conduct its programs and recommend candidates for certification by entitlement until the time of the institution's next scheduled review.</p> <p>The State Board of Education hereby assigns "continuing approval" to the following professional education preparation programs for University of St. Francis as it meets the applicable Illinois content area standards.</p> <ul style="list-style-type: none"> • General Administrative – Principal • Elementary Education • Mathematics • Reading Specialist • Science – Biology • Social Science – History <p>Mr. Clark seconded the motion and it passed with a roll call vote. Dr. Ward "abstained" from the vote.</p>
<p>ELECTION OF OFFICERS</p>	<p>Mr. Clark moved that the State Board of Education elect Dr. Christopher Ward as Vice Chairman and Dr. Vinni Hall as Secretary. Ms. Karon seconded the motion and it was approved by a unanimous roll call vote.</p>
<p>NEW BUSINESS</p>	<p>Dr. Brown inquired if we still have a back log in expenditures and obligations at the Comptrollers Office. Linda Mitchell responded that the Comptrollers Office is about 60 days behind except for General State Aid payments; they are hoping to release a GSA payment tomorrow.</p>
<p>ANNOUNCEMENTS & REPORTS</p>	<p>Vice Chairman Ward introduced Dr. Proshanta Nandi from the Illinois Board of Higher Education (IBHE). Dr. Nandi stated that the IBHE met on</p>

<p>IBHE Liaison Report</p> <p>Superintendents Announcements</p>	<p>Tuesday, January 27, 2009 at the President Abraham Lincoln Hotel and Conference Center in Springfield. Highlights of the meeting included the following:</p> <ul style="list-style-type: none"> ○ Judy Erwin, IBHE Executive Director, provided an update and invited a Board discussion of an implementation plan for the Public Agenda for College and Career Success. ○ The IBHE is working with ISBE staff on legislation to support P-20 longitudinal data capacity in Illinois; so that we can track student achievement to ensure student success. We also are working with the Chicago Public Schools on 21st Century Scholars legislation, which will help low-income students, beginning in middle school, plan academically for college and guarantee them financial support. ○ The IBHE approved budget recommendations for Fiscal 2010 for operations, grants, and capital improvements, all supportive of the Public Agenda. ○ The Council of Community College Presidents, led by Chair Bob Mees, Phil Minnis, Dean for Workforce Development and Community Education and Darren Pulley, Associate Dean for Corporate Education, all from John A. Logan College gave a presentation on "How Community Colleges are Responding to Workforce Preparedness and Economic Development in Illinois." ○ The IBHE approved nine new associate degree programs at community colleges; one associate, five baccalaureates, and one doctoral program at the independent colleges, and three baccalaureate programs at the public universities. <p>Dr. Nandi noted that the next IBHE Meeting will be April 7, 2009 at the Abraham Lincoln Hotel and Conference Center in Springfield.</p>
<p>Superintendents Announcements</p>	<p>Dr. Koch indicated that he attended the Illinois Education Round Table Legislative Forum on February 18, 2009 in Springfield. He thanked Dr. Michael Jacoby and Dr. Diane Rutledge for a successful forum.</p> <p>Superintendent Koch, Linda Mitchell and Darren Reisberg met with Representative Linda Chapa LaVia and Representative Suzanne Bassi to discuss the budget and the federal stimulus.</p> <p>Dr. Koch informed Board members that he would be going to the Senate Appropriation Hearings to talk about the federal stimulus. He will be sharing a copy of the document released today by the Council Chief State School Officers (CCSSO). The document summarizes the act.</p> <p>Dr. Koch attended the simultaneous reading of the Gettysburg Address by Illinois students at the Abraham Lincoln Museum and Library.</p> <p>Dr. Koch stated that Secretary Arne Duncan has invited all the Chief State School Offices to Washington on February 25, 2009 for a White House briefing on the stimulus package.</p> <p>Dr. Ward stated that he and Susie Morrison will be attending the</p>

<p>Member Reports</p>	<p>NASBE/CCSSO Meeting the Turnaround Challenge on March 11, 2009. He will also be attending the NASBE Board of Directors meeting in Washington on March 13-14, 2009.</p> <p>Ms. Karon stated that she had the opportunity to visit the Newcomer Center in High School District #214 on February 12, 2009 and shared with the Board an informational document about the center.</p> <p>Dr. Fields expressed his appreciation for the visit to the Early Childhood Center yesterday. Ms. Koster agreed and thought the program was exceptional.</p> <p>Mr. Clark indicated that he visited the Abraham Lincoln Elementary School in Glen Ellyn and was there for the Gettysburg Address reading on Feb 12, 2009. There were 650 students reading the address simultaneously. He also visited the school's Early Childhood Center in the morning.</p> <p>Ms. Holmes obtained U.S. postage stamps commemorating the 200th Birthday of Abraham Lincoln on February 12, 2009. Ms. Holmes presented Superintendent Koch with a commemorative stamp.</p> <p>Dr. Brown stated that she also enjoyed the visit to the Early Childhood Center. She indicated that she has spent much of her time responding to inquiries on extraordinary needs money.</p> <p>Dr. Hall reported that she will be going to Washington on March 13-14, 2009 to attend the NASBE Study Group on Community Partnerships. She will also join the Chicago Tribune and other board members to review an academic competition. She commented that she has been enjoying and celebrating Black History Month.</p>
<p>INFORMATION ITEMS ISBE Fiscal & Administrative Monthly Reports</p>	<p>Vice Chairman Ward asked that the Board members read the Monthly Status Report on Rulemaking and the Fiscal and Administrative Monthly Reports (<i>Plenary PP 24-51</i>) printed in the Board meeting materials. There were no inquires this month regarding these reports.</p>
<p>Motion for Adjournment</p>	<p>Mr. Clark moved that the meeting be adjourned. Ms. Karon seconded the motion and it passed with unanimous voice vote. The meeting adjourned at 11:00 a.m.</p>

Respectfully Submitted,

Dr. Vinni Hall
Board Secretary

Mr. Jesse Ruiz
Chairman

ILLINOIS STATE BOARD OF EDUCATION

WORK STUDY: EARLY CHILDHOOD

February 18, 2009

Springfield, Illinois

Members Physically Present

Dr. Andrea Brown, Committee Member
Dean Clark, Board Member
Dr. David Fields, Committee Chair
Dr. Vinni Hall, Committee Member
Brenda Holmes, Board Member
Joyce Karon, Committee Member
Lanita Koster, Committee Member
Jesse Ruiz, Board Member
Chris Ward, Board Member

Staff Present

Rhonda Clark	Alicia Lynch-Deatherage
Molly Darling Scovern	Susie Morrison
Kay Henderson	Deb Scheiter
Raydeane James	Linda Tomlinson
Christopher Koch	Matt Vanover
Linda Mitchell	Mark Williams
Darren Reisberg	Andrea Wingo
	Cindy Zumwalt

Student Advisory Council Members Present

Lindsey Ahrens	Alex Maxwell
Jeffery Barnes	Ryan Ornstein
Sarah Chapman	Weston Quivey
Skye David	Hannah Rhoades
Brittany Kendrick	Shelby Wills
Gabrielle Kendrick	

Ms. Morrison publicly thanked Dr. Walter Milton, Superintendent of Springfield School District #186, and the staff of the district's Early Learning Center (ELC) for the tour of the facility this morning. Listening to the comments of Principal Jill Grove and the success at the ELC was a nice prelude to today's work study topic. Ms. Morrison introduced Kay Henderson, Division Administrator for Early Childhood Education.

Ms. Henderson presented a detailed programmatic history as well as a summary of past funding with regard to Early Childhood Education (ECE) in Illinois. She pointed out that the ISBE state preschool program was initially funded 1986, as part of a larger school reform effort. Funding has increased every year since, with the exception of three years when the funding was held level. Kay discussed ISBE's success with standards, infrastructure (social emotional consultation, teacher preparation, monitoring, evaluation & training), data collection and collaboration. ISBE's preschool program has gained national recognition for high quality and access for 3 year olds. She also informed the Board of the challenges facing ECE, which include changing demographics and quality assurance. Kay suggested the ultimate vision for ECE is a high quality program that produces positive child outcomes, meets family and community needs, maximizes the impact of public funds and supports a birth to grade 3 continuum.

Board member Dr. Vinni Hall then presented remarks about her involvement in early childhood. She has represented the Board on a number of early childhood initiatives, including the Illinois Early Learning Council, the Early Childhood Evaluation Advisory Committee, and the steering committee of the National Center for Professional Development on Inclusion (NCPDI) state grant. Dr. Hall was complimentary of the work done by the Early Childhood Division and others in building a birth to five system in Illinois, but cited some remaining issues to be resolved.

These include alignment of 0-5 to the k-12 system, early childhood teacher compensation in community programs, space constraints, Head Start collaboration, transportation, and inconsistent eligibility requirements between preschool and child care, and lack of heterogeneous learning environments for high risk children.

Board member Joyce Karon noted that she was sitting on the Board when the Illinois Early Learning Standards were adopted. She feels that the IELS have given the program direction and sustainability. She expressed concern that we may not be able to keep pace with the needs resulting from changing demographics with the growth of non-English speaking populations across the state, especially in areas where a number of languages and dialects are spoken. Ms. Karon also wondered what percentage of the 111 centers, serving 35,000 children in Cook County, are located in the city of Chicago. She noted that Chicago Public School District 299 receives 37% of the grant. In closing, Ms. Karon told of a Newcomers Center she recently visited. It was located in a high school district, where high school students are learning English and honing their skills by reading to children in the preschool program housed in the same building. This was an interesting, unique connection.

Board member Dr. Chris Ward expressed concern that Chicago Public School District 299 receives 37% of the total Early Childhood Block Grant funds, yet our statutory preschool report often identifies a problem with data collection and reporting from CPS. Dr. Ward stated that data collection and reporting is important as it relates to transparency and the fact that the appropriation of \$380 million represents a large item in the ISBE budget. He asked if there is some policy action the Board can take that would result in better data collection from CPS. Kay Henderson responded that CPS has fully participated in enrolling their students in the Student Identification System (SIS) and this should go a long way in fixing the problem. Susie Morrison added that it is also important that the Board support the longitudinal data system and the inclusion of preschool data in that system.

Board member Dr. Andrea Brown closed the session with comments about her long time interest in and support of early childhood education programs. She asked if ISBE's appropriation for the Early Childhood Block Grant is proportionate to that of other states, given the high quality of our programs. Kay Henderson responded appropriation itself seems very large, due to large increases in recent years. However, the average cost per child in Illinois is about \$3,300, and is in the mid-range of the per capita funding of all states.

Kay Henderson introduced the Early Childhood Division staff seated in the audience, and the Board applauded their work.

The Work Study Session adjourned at 11:15 a.m.

Illinois State Board of Education Meeting
MINUTES
March 2, 2009
Special Board Meeting
(via teleconference)

ROLL CALL	<p>Mr. Jesse Ruiz, Chairman, called the Special Board Meeting of the Illinois State Board of Education to order at 4:00 p.m.</p> <p>Chairman Ruiz asked Ms. Jean Ladage, Assistant to the Board, to call the roll. Dr. Chris Koch, State Superintendent of Education, was also in attendance in Springfield.</p> <p><u>Members Present via Teleconference:</u></p> <p>From ISBE Chicago Office Mr. Jesse Ruiz, Chairman Dr. Christopher Ward, Vice Chairman Mr. Dean Clark Ms. Lanita Koster</p> <p>From ISBE Springfield Office Ms. Brenda Holmes</p> <p><u>Members Present by Phone</u> Dr. Vinni Hall, Secretary Dr. Andrea Brown</p> <p><u>Members Absent</u> Ms. Joyce Karon Dr. David Fields</p> <p><u>Staff Present</u> Dr. Connie Wise Ms. Joyce Zurkowski Ms. Marcy Dutton Mr. Robert Wolfe Mr. Matt Vanover Ms. Mary Fergus Ms. Marsha Moffett</p> <p><u>Others Present</u> Mr. Daryl Morrison Mr. Dan Shomin Mr. O'Kema Lewis</p> <p>Chairman Jesse Ruiz announced that the Board Office has received a request from two members to participate by phone. Dr. Andrea Brown and Dr. Vinni Hall are unable to travel to the meeting sites due to business conflicts. These requests were received within 24 hours in advance of this meeting.</p> <p><u>MOTION</u> Mr. Clark moved that Dr. Brown and Dr. Hall be granted permission to participate by phone for today's meeting. Ms. Koster seconded the motion and it passed with a unanimous roll call vote.</p> <p>Chairman Ruiz noted that there are people attending the meeting in Chicago at the James R. Thompson Center, Conference Room A, V-Tel, 14th Floor and Springfield at the Illinois State Board of Education in the V-Tel Room, 3rd Floor, as well as by telephone. Board members in attendance today are participating via</p>
------------------	----------------------------------------------------------------------------------------------------------------------------------------------------------------------------------------------------------------------------------------------------------------------------------------------------------------------------------------------------------------------------------------------------------------------------------------------------------------------------------------------------------------------------------------------------------------------------------------------------------------------------------------------------------------------------------------------------------------------------------------------------------------------------------------------------------------------------------------------------------------------------------------------------------------------------------------------------------------------------------------------------------------------------------------------------------------------------------------------------------------------------------------------------------------------------------------------------------------------------------------------------------------------------------------------------------------------------------------------------------------------------------------------------------------------------------------------------------------------------------------------------------------------------------------------------------------------------------------------------------------------------------------------------------------------------------------------------------------------------------------------------------------------------------------------------------------------------------------------------------------------------------------------------------------------------------------------------------------------------

	teleconference and phone from different locations.
PUBLIC PARTICIPATION	<p><u>Springfield Public Participation</u> None</p> <p><u>Chicago Public Participation</u> None</p>
Approval of Contract for Scoring 2009 ISAT Writing Assessment	<p>Chairman Ruiz indicated that the purpose of the meeting is to obtain contract approval for the scoring of the 2009 Illinois Standards Achievement Test (ISAT) for Writing.</p> <p>Superintendent Koch explained that there was a concern that had come to ISBE's attention in regards to an RFSP that was released, and whether there was enough time for vendors other than the most recent ISAT Writing vendor to adequately respond to a particular component of the RFSP. Dr. Koch stated that it took longer to get the RFSP out than expected due to staff limitations. In order to address the concerns and accommodate our needs at no additional cost to the state, the Agency is recommending an emergency contract for the 2009 scoring with our most recent ISAT Writing vendor—Measurement Incorporated. The deadline for the remainder of the RFSP was extended one week, with proposals due March 3.</p> <p>Dr. Koch commented that the issue of the writing assessment has also come up in the appropriations hearings—with legislators asking why we assess writing when federal law does not require it. Dr. Koch explained to the legislators that the writing assessment is a state mandate.</p> <p>Superintendent Koch noted that we would have increased cost this year because it has expanded to include another grade level. Dr. Wise stated that we would be testing 146,000 more 3rd grade students this year and the total tested will be 602,000. She also noted that the total can change with number of new students coming into a district. Measurement Incorporated reassured us that the work would be done properly in the time allocated. The assessment will cost approximately \$4.84 per student for FY09.</p> <p>Joyce Zurkowski indicated that the RFSP was posted for three weeks and when the decision was made to pull the 2009 scoring from the RFSP, the Agency extended that date from February 26, 2009 to March 3, 2009—thus allowing vendors five additional days to respond. The law requires that we post RFSPs for at least two weeks.</p> <p>Chairman Ruiz asked how many companies offered a bid on the RFSP in the past. Ms. Zurkowski stated four companies offered bids four years ago.</p> <p>Dr. Ward asked Superintendent Koch if he felt comfortable with the emergency contract and if he thought it was cost effective. Superintendent Koch responded by saying yes; he noted that Joyce Zurkowski has spent considerable time negotiating the cost.</p> <p><u>MOTION</u> Dr. Hall moved that the State Board hereby authorizes agency staff to approve an emergency procurement contract for ISAT Writing scoring services for fiscal year 2009 with Measurement Incorporated, for an amount not to exceed \$3,100,000. The contract will run from the date of execution through June 30, 2009.</p> <p>Mr. Clark seconded the motion and it passed with a unanimous roll call vote.</p>

<p>Update on American Recovery and Reinvestment Act of 2009</p>	<p>Dr. Koch commented that we have received many calls from districts requesting information on the stimulus package and at this point we are advising the schools to continue with their budgets as if they were not getting the stimulus funding. Many school districts are planning for staff layoffs. The United States Department of Education has targeted this week for Secretary Duncan to get additional guidance and information out to the states.</p> <p>Superintendent Koch stated that he had been invited to Washington to meet with Secretary of Education Arne Duncan and Vice-President Joe Biden and Mrs. Biden. Secretary Duncan spent a lot of time talking about the incentive funds or what they call the “Reach To The Top Funds” and what we would need to do to be competitive. He also noted that states would be asked to address the following four criteria in the application process:</p> <ol style="list-style-type: none"> 1. Detail description of uses of funds (obligated and unobligated). 2. Quarterly reports on both financial information and on program outcomes/results. 3. Estimated number of jobs created and retained. 4. Subcontracts and subgrants required to comply with Federal Funding Accountability and Transparency Act. <p>Secretary Duncan also discussed other opportunities for states to apply for funds with other states.</p> <p>Vice-President Joe Biden let it be known that they would closely monitor the funds and that there would be federal rules to follow. Vice President Biden also commented that if there was any misuse of funds he would be the in the district where the funds were misspent to let the American people know.</p> <p>There were forty states present at the meeting.</p>
<p>Motion for Adjournment</p>	<p>Dr. Ward moved that the meeting be adjourned. Mr. Clark seconded the motion and it passed with unanimous voice vote. The meeting adjourned at 4:40 p.m.</p>


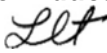
Respectfully Submitted,

Dr. Vinni Hall
Board Secretary

Mr. Jesse Ruiz
Chairman

ILLINOIS STATE BOARD OF EDUCATION MEETING
March 18 - 19, 2009

TO: Illinois State Board of Education

FROM: Christopher A. Koch, Ed.D., State Superintendent of Education 
Linda Tomlinson, Ed.D., Assistant Superintendent 

Agenda Topic: Action Item: Program Approvals

Materials: State Teacher Certification Program Approvals

Staff Contact: Patrick Murphy
Diane Lacopo
Dennis Williams
Phylliss Jones

Purpose of Agenda Item

The purpose of this agenda item is to consider the State Teacher Certification Board's recommendation for the continuing approval of programs for Lewis and McKendree Universities, and approval for new programs at National-Louis University.

Expected Outcome(s) of Agenda Item

The State Teacher Certification Board voted to recommend continuing approval of Lewis and McKendree University's programs in accordance with the State Board's administrative rules, Section 25.125 (j) (1), probation for one program at McKendree University, and approval of new programs at National-Louis University. The State Board's decision will authorize the institutions to conduct its programs and recommend candidates for certification by entitlement.

Relationship to/Implications for the State Board's Strategic Plan

The approval of the State Certification Board's recommendations regarding the professional preparation programs has linkage to Goal 2: To ensure that every student will be supported by highly prepared and effective teachers and school leaders, policies and processes have been implemented that support preparation programs with a focus on instruction and student learning. These standards-based programs will prepare educators with expertise in discipline-specific content areas and ensure that teachers and administrators demonstrate best practices to help all students learn.

Background Information

Lewis University is an established Illinois teacher preparation institution that offers undergraduate and graduate programs in elementary education, secondary education, special certification areas, and special education; as well as graduate level programs in reading specialist, school counseling, and two school administration areas.

A National Council for Accreditation of Teacher Education (NCATE) Board of Examiners team conducted an on-site continuing accreditation review of **Lewis University** on October 27- November 1, 2006. Program reviews were conducted by the NCATE Specialized Professional Associations (SPAs) and ISBE in advance of the on-site accreditation review. As applicable, rejoinders were submitted by **Lewis University** to the NCATE SPAs, and the program recommendations were submitted to the State Board for consideration on March 6, 2009. These programs are submitted as a result of the rejoinders Lewis University submitted to the respective SPAs in order to obtain national recognition.

McKendree University is an established Illinois teacher preparation institution that offers undergraduate, graduate, and alternative route certification programs in elementary education, secondary education, special certification areas, and special education; as well as a graduate level school administrative program.

A National Council for Accreditation of Teacher Education (NCATE) Board of Examiners team conducted an on-site continuing accreditation review of **McKendree University** on October 27- November 1, 2006. Program reviews were conducted by the NCATE specialized professional associations (SPAs) and ISBE in advance of the on-site accreditation review. As applicable, rejoinders were submitted by **McKendree University** to the NCATE SPAs, and the program recommendations were submitted to the State Board for consideration on March 6, 2009. These programs are submitted as a result of the rejoinders McKendree submitted to the respective SPAs in order to obtain national recognition.

National Louis University is an established Illinois teacher preparation institution that offers undergraduate, graduate, and alternative route certification programs in elementary education, early childhood, secondary education, special certification areas, and special education; as well as graduate level school administrative programs and school service personnel.

Analysis and Implications for Policy, Budget, Legislative Action and Communications

As defined by Section 25.125 (i-j) of the State Board’s administrative rules, the State Teacher Certification Board (STCB) conducted its review of the programs on Friday, March 6, 2009. Based on these reviews, the State Teacher Certification Board recommends continuing approval of the following programs [Section 25.127 (j) (1) (A)]:

CONTINUED APPROVAL:

Institution	Program	Staff Contact
Lewis	Elementary Education – Bachelors	Diane Lacopo
	Science – Biology	
	Science – Chemistry	
	Science – Physics	
	Principal	
	Superintendent	
McKendree	Mathematics	Dennis Williams
	Science – Biology	
	Science - Chemistry	

McKendree University also submitted a final SPA report for physical education for which the SPA gave a “Not Recognized” designation. McKendree University will submit a new physical education report to the SPA in September, 2009. The corresponding SPA reply report will be given to the State Certification Board for consideration upon the university’s receipt. This will occur within the 18-month window.

The Certification Board recommends to the State Board of Education probation for physical education at McKendree University and recommends an 18-month period during which no new candidates shall be enrolled [Section 25.127 (j) (2)].

PROBATION

Institution	Program	Staff Contact
McKendree	Physical Education	Dennis Williams

The State Teacher Certification Board recommends to the State Board of Education provisional approval of the following programs at National Louis, authorizing the educational unit to conduct programs and to recommend candidates for certification by entitlement until the time of the institution’s next scheduled accreditation review (Section 25.145).

PROVISIONAL APPROVAL

Institution	Program	Staff Contact
National Louis	Learning Behavior Specialist II (LBS II) – Technology Specialist	Phyliss Jones
	Learning Behavior Specialist II (LBS II) – Curriculum Adaptation Specialist	

Policy Implications: None

Budget Implications: None

Legislative Action: None

Communication: The Universities will be notified regarding the State Board’s decision. The State Teacher Certification Board will also be notified, and the State Board’s Directory of Approved Programs will be updated to reflect the programs’ status.

Pros and Cons of Various Actions

Approval of the programs will authorize the universities to entitle graduates for the various programs and certificates as listed. Approval of the recommendation to place the physical education program at McKendree University on probation for an 18-month period during which no new candidates shall be enrolled will allow McKendree time to bring the program up to standards.

Superintendent's Recommendation

I recommend that the following motions be adopted:

Motion 1

The State Board awards ***continuing approval*** for **Lewis University** for the specific professional education preparation programs listed below, as they meet the applicable Illinois content area standards.

Elementary Education – Bachelors

Science – Biology

Science – Chemistry

Science – Physics

Principal

Superintendent

Motion 2

The State Board awards ***continuing approval*** for **McKendree College** for the specific professional education preparation programs listed below, as they meet the applicable Illinois content area standards.

Mathematics

Science – Biology

Science - Chemistry

The State Board further awards ***probation*** for **McKendree College** for the professional education preparation program for **Physical Education**, as it does not meet the applicable Specialized Professional Association standards.

Motion 3

The State Board of Education ***provisionally approves*** the Learning Behavior Specialist II (**LBS II**) – **Technology Specialist** and the **LBS II – Curriculum Adaptation Specialist** programs for **National-Louis University**, thereby authorizing the university to conduct the programs and to recommend candidates for certification by entitlement until the time of the institution's next accreditation review.

Next Steps

Lewis University, McKendree University, and National Louis University will be notified regarding the State Board's decision. The State Teacher Certification Board also will be notified and the State Board's Directory of Approved Institutions and Programs will be updated to identify the new programs.

ILLINOIS STATE BOARD OF EDUCATION MEETING
March 18, 2009

TO: Illinois State Board of Education

FROM: Christopher A. Koch, Ed.D., State Superintendent of Education 
Linda Riley Mitchell, Chief Financial Officer 
Donald W. Evans, Director of Human Resources, Professional Development and Conference Planning 

Agenda Topic: Information Item: SBE Fiscal & Administrative Monthly Reports

Materials: Appropriations and Spending by Program
Financial Status Report (contract & grant detail)
Comparative Statement of Expenditures
Monthly Headcount Graph, Staff Detail, Personnel Transactions

Purpose of Agenda Item

To provide the Board standard reports with key information on fiscal and administrative activities of the state Agency.

Relationship to/Implications for the State Board's Strategic Plan

Not applicable – informational item only.

Expected Outcome(s) of Agenda Item

Not applicable – informational item only.

Background Information

In June 2002, the State Board adopted bylaws outlining a new committee structure under which fiscal, audit and operations issues will be handled by the Finance and Audit Committee. The Superintendent requested that the Agency organize and standardize the financial and headcount data provided to the Board for their future policy work and decision making.

Currently, the following reports are provided:

1. Budget/Annual Report (annually in January)
2. Condition of Public Education (December)
3. Comptroller SEA Report (annually in February)
4. Appropriation and Expenditure (monthly)
5. Financial Status Report – Contract/Grant Detail (monthly)
6. Comparative Statement of Expenditures (monthly)
7. Headcount Reports (monthly)
Personnel Transactions, Staff Detail by Division, & Monthly Headcount Graph

Analysis and Implications for Policy, Budget, Legislative Action and Communications

The monthly or Quarterly Fiscal and Headcount Reports were first provided to the Board in August 2002. These reports provide information regarding staffing and funding as well as details of contracts over \$50,000 and grants the Agency is processing.

All contracts and grants totaling over \$1 million are reviewed at the Board level. Included in this month's review are:

- Principal Mentoring Program – Illinois Principals Association
- World-Class Innovations in Developing Assessment (WIDA) Consortium
- State Career & Technical Education Improvement & Agriculture Education

Superintendent's Recommendation

None needed.

Next Steps

Continue to provide these reports pursuant to the schedule above.

Illinois State Board of Education

FY 2009 Appropriation & Spending by Program 07/01/2008 thru 02/28/2009

(Dollars in Thousands)

Initiatives	Appropriation			YTD Expenditures		
	Total	Grants	Admin	Total	Grants	Admin
STATE						
Distributive Grants	<u>\$6,582,543.5</u>	<u>\$6,582,543.5</u>	<u>\$0.0</u>	<u>\$3,947,062.5</u>	<u>\$3,947,062.5</u>	<u>\$0.0</u>
General State Aid	\$4,590,259.9	\$4,590,259.9	\$0.0	\$2,918,384.0	\$2,918,384.0	\$0.0
General State Aid/Hold Harmless	\$26,106.4	\$26,106.4	\$0.0	\$26,106.4	\$26,106.4	\$0.0
Charter Schools - Transition Impact Aid	\$3,421.5	\$3,421.5	\$0.0	\$1,711.7	\$1,711.7	\$0.0
District Consolidation Cost	\$7,850.0	\$7,850.0	\$0.0	\$5,475.3	\$5,475.3	\$0.0
Fast Growth Grants	\$7,500.0	\$7,500.0	\$0.0	\$7,500.0	\$7,500.0	\$0.0
Gifted Education	\$7,000.0	\$7,000.0	\$0.0	\$0.0	\$0.0	\$0.0
Homeless Education	\$3,000.0	\$3,000.0	\$0.0	\$0.0	\$0.0	\$0.0
School Breakfast Incentive Program	\$723.5	\$723.5	\$0.0	\$147.7	\$147.7	\$0.0
School Safety & Education Block Grant (ADA)	\$74,841.0	\$74,841.0	\$0.0	\$37,428.1	\$37,428.1	\$0.0
Transition Assistance	\$36,763.6	\$36,763.6	\$0.0	\$0.0	\$0.0	\$0.0
Textbook Loan Program	\$42,826.5	\$42,826.5	\$0.0	\$0.0	\$0.0	\$0.0
Mandated Categoricals	<u>\$1,782,251.1</u>	<u>\$1,782,251.1</u>	<u>\$0.0</u>	<u>\$950,309.3</u>	<u>\$950,309.3</u>	<u>\$0.0</u>
Illinois Free Lunch/Breakfast	\$26,300.0	\$26,300.0	\$0.0	\$20,166.0	\$20,166.0	\$0.0
Orphanage Tuition 18-3 (Reg Ed)	\$11,600.0	\$11,600.0	\$0.0	\$6,365.4	\$6,365.4	\$0.0
Sp-Ed - Extraordinary Services	\$331,051.1	\$331,051.1	\$0.0	\$171,350.8	\$171,350.8	\$0.0
Sp-Ed - Orphanage Tuition 14-7.03	\$101,800.0	\$101,800.0	\$0.0	\$70,011.4	\$70,011.4	\$0.0
Sp-Ed - Personnel Reimbursement	\$426,100.0	\$426,100.0	\$0.0	\$253,742.5	\$253,742.5	\$0.0
Sp-Ed - Private Tuition	\$151,600.0	\$151,600.0	\$0.0	\$112,258.6	\$112,258.6	\$0.0
Sp-Ed - Summer School	\$11,000.0	\$11,000.0	\$0.0	\$10,854.4	\$10,854.4	\$0.0
Sp-Ed - Transportation	\$383,300.0	\$383,300.0	\$0.0	\$132,813.4	\$132,813.4	\$0.0
Transportation - Regular/Vocational	\$339,500.0	\$339,500.0	\$0.0	\$172,746.6	\$172,746.6	\$0.0
Standards - Assessment & Accountability	<u>\$36,324.7</u>	<u>\$3,042.7</u>	<u>\$33,282.0</u>	<u>\$10,319.8</u>	<u>\$1,661.0</u>	<u>\$8,658.8</u>
Assessments	\$29,982.0	\$0.0	\$29,982.0	\$8,388.8	\$0.0	\$8,388.8
Growth Model	\$3,000.0	\$0.0	\$3,000.0	\$267.5	\$0.0	\$267.5
System of Support	\$3,342.7	\$3,042.7	\$300.0	\$1,663.6	\$1,661.0	\$2.6
Ensuring Quality Ed Personnel	<u>\$33,670.0</u>	<u>\$30,771.6</u>	<u>\$2,898.4</u>	<u>\$6,155.8</u>	<u>\$4,974.1</u>	<u>\$1,181.8</u>
Grow Your Own Teachers	\$3,500.0	\$3,031.2	\$468.8	\$1,857.1	\$1,585.9	\$271.1
National Board Certification	\$11,485.0	\$11,485.0	\$0.0	\$0.0	\$0.0	\$0.0
Principal Mentoring Program	\$3,100.0	\$1,291.6	\$1,808.4	\$600.0	\$0.0	\$600.0

Initiatives	Appropriation			YTD Expenditures		
	Total	Grants	Admin	Total	Grants	Admin
Chicago Principals and Admin Association	\$1,000.0	\$1,000.0	\$0.0	\$0.0	\$0.0	\$0.0
Teach for America	\$450.0	\$450.0	\$0.0	\$0.0	\$0.0	\$0.0
Teacher and Admin. Mentoring Program	\$14,000.0	\$13,378.8	\$621.2	\$3,660.2	\$3,349.6	\$310.6
Teacher of the Year	\$135.0	\$135.0	\$0.0	\$38.6	\$38.6	\$0.0
Reading Improvement Block Grant	<u>\$76,139.8</u>	<u>\$76,139.8</u>	<u>\$0.0</u>	<u>\$48,502.2</u>	<u>\$48,502.2</u>	<u>\$0.0</u>
Early Childhood	<u>\$380,261.4</u>	<u>\$376,324.5</u>	<u>\$3,936.9</u>	<u>\$248,124.1</u>	<u>\$245,723.7</u>	<u>\$2,400.5</u>
Academic Difficulty	<u>\$136,503.7</u>	<u>\$136,503.7</u>	<u>\$0.0</u>	<u>\$100,432.3</u>	<u>\$100,432.3</u>	<u>\$0.0</u>
Alternative Learning/Regional Safe Schools	\$18,535.5	\$18,535.5	\$0.0	\$11,046.9	\$11,046.9	\$0.0
Bilingual Education	\$75,652.0	\$75,652.0	\$0.0	\$56,456.2	\$56,456.2	\$0.0
Extended Learning Op (Summer Bridges)	\$22,238.1	\$22,238.1	\$0.0	\$16,894.4	\$16,894.4	\$0.0
Truant Alternative Optional Education	\$20,078.1	\$20,078.1	\$0.0	\$16,034.9	\$16,034.9	\$0.0
Learning Technologies	<u>\$4,169.7</u>	<u>\$2,719.7</u>	<u>\$1,450.0</u>	<u>\$2,989.2</u>	<u>\$1,994.2</u>	<u>\$995.0</u>
Technology for Success	\$4,169.7	\$2,719.7	\$1,450.0	\$2,989.2	\$1,994.2	\$995.0
School Infrastructure	<u>\$100.0</u>	<u>\$0.0</u>	<u>\$100.0</u>	<u>\$100.0</u>	<u>\$0.0</u>	<u>\$100.0</u>
Temporary Relocation Expense Fund Deposit	\$100.0	\$0.0	\$100.0	\$100.0	\$0.0	\$100.0
Career Preparation	<u>\$46,073.2</u>	<u>\$46,073.2</u>	<u>\$0.0</u>	<u>\$35,843.0</u>	<u>\$35,843.0</u>	<u>\$0.0</u>
Agricultural Education	\$3,381.2	\$3,381.2	\$0.0	\$2,533.1	\$2,533.1	\$0.0
Career and Technical Education	\$38,562.1	\$38,562.1	\$0.0	\$30,234.9	\$30,234.9	\$0.0
Illinois Governmental Internship Program	\$129.9	\$129.9	\$0.0	\$75.0	\$75.0	\$0.0
Jobs for Illinois Graduates	\$4,000.0	\$4,000.0	\$0.0	\$3,000.0	\$3,000.0	\$0.0
Regional Services	<u>\$16,090.0</u>	<u>\$16,090.0</u>	<u>\$0.0</u>	<u>\$11,753.0</u>	<u>\$11,753.0</u>	<u>\$0.0</u>
Regional Superintendent Initiatives	\$500.0	\$500.0	\$0.0	\$316.7	\$316.7	\$0.0
ROE - Bus Driver Training	\$70.0	\$70.0	\$0.0	\$70.0	\$70.0	\$0.0
ROE - Salaries	\$9,100.0	\$9,100.0	\$0.0	\$6,002.9	\$6,002.9	\$0.0
ROE - School Service	\$6,318.0	\$6,318.0	\$0.0	\$5,261.4	\$5,261.4	\$0.0
ROE - Supervisory Expenses	\$102.0	\$102.0	\$0.0	\$102.0	\$102.0	\$0.0
Strategic Plan	<u>\$500.0</u>	<u>\$0.0</u>	<u>\$500.0</u>	<u>\$216.1</u>	<u>\$0.0</u>	<u>\$216.1</u>
Strategic Plan	\$500.0	\$0.0	\$500.0	\$216.1	\$0.0	\$216.1
Administration	<u>\$24,250.5</u>	<u>\$0.0</u>	<u>\$24,250.5</u>	<u>\$16,591.6</u>	<u>\$0.0</u>	<u>\$16,591.6</u>
Targeted Initiatives	<u>\$73,657.7</u>	<u>\$72,192.9</u>	<u>\$1,464.8</u>	<u>\$34,263.8</u>	<u>\$33,822.1</u>	<u>\$441.7</u>
Adler Planetarium	\$200.0	\$200.0	\$0.0	\$0.0	\$0.0	\$0.0

Initiatives	Appropriation			YTD Expenditures		
	Total	Grants	Admin	Total	Grants	Admin
Advanced Placement Classes	\$1,646.9	\$1,635.3	\$11.6	\$1,136.3	\$1,136.3	\$0.0
Aerospace Education Initiative - Chicago	\$920.0	\$920.0	\$0.0	\$758.0	\$758.0	\$0.0
After School Programs	\$9,700.0	\$9,700.0	\$0.0	\$817.1	\$817.1	\$0.0
After School Matters	\$500.0	\$500.0	\$0.0	\$0.0	\$0.0	\$0.0
Agudath Israel of America-Sch. Transportation	\$1,200.0	\$1,200.0	\$0.0	\$763.6	\$763.6	\$0.0
Arts and Foreign Language	\$4,000.0	\$4,000.0	\$0.0	\$1,459.0	\$1,459.0	\$0.0
Autism Project	\$100.0	\$100.0	\$0.0	\$66.7	\$66.7	\$0.0
Blind & Dyslexic	\$1,218.8	\$1,218.8	\$0.0	\$1,018.0	\$1,018.0	\$0.0
Children's Mental Health Partnership	\$3,000.0	\$2,496.8	\$503.2	\$895.7	\$821.5	\$74.3
Class Size Reduction Pilot Project	\$8,000.0	\$8,000.0	\$0.0	\$3,592.5	\$3,592.5	\$0.0
Classroom Cubed	\$2,000.0	\$2,000.0	\$0.0	\$869.5	\$869.5	\$0.0
Community Residential Services Authority	\$575.0	\$0.0	\$575.0	\$351.8	\$0.0	\$351.8
Educator Misconduct Investigations	\$375.0	\$0.0	\$375.0	\$15.6	\$0.0	\$15.6
Hard to Staff Schools Incentives	\$3,000.0	\$3,000.0	\$0.0	\$0.0	\$0.0	\$0.0
Healthy Kids/Healthy Minds - Chicago	\$3,000.0	\$3,000.0	\$0.0	\$1,500.0	\$1,500.0	\$0.0
Healthy Kids/Healthy Minds - Cicero & Berwy	\$1,000.0	\$1,000.0	\$0.0	\$0.0	\$0.0	\$0.0
Illinois Economic Education	\$250.0	\$250.0	\$0.0	\$0.0	\$0.0	\$0.0
Materials Center for the Visually Impaired	\$2,121.0	\$2,121.0	\$0.0	\$1,525.0	\$1,525.0	\$0.0
Metro East Consortium for Child Advocacy	\$217.1	\$217.1	\$0.0	\$130.3	\$130.3	\$0.0
Minority Transition Program	\$578.8	\$578.8	\$0.0	\$356.8	\$356.8	\$0.0
Museum of Science and Industry	\$200.0	\$200.0	\$0.0	\$0.0	\$0.0	\$0.0
Parental Participation Pilot Project	\$100.0	\$100.0	\$0.0	\$73.8	\$73.8	\$0.0
Philip J. Rock Center & School	\$3,577.8	\$3,577.8	\$0.0	\$2,627.8	\$2,627.8	\$0.0
Re-Enrolling Students Program	\$4,000.0	\$4,000.0	\$0.0	\$2,760.0	\$2,760.0	\$0.0
Response to Intervention	\$2,000.0	\$2,000.0	\$0.0	\$0.0	\$0.0	\$0.0
Rural Technology Initiative	\$4,000.0	\$4,000.0	\$0.0	\$0.0	\$0.0	\$0.0
Targeted Interventions	\$4,000.0	\$4,000.0	\$0.0	\$1,386.2	\$1,386.2	\$0.0
Tax Equivalent Grants	\$222.6	\$222.6	\$0.0	\$222.6	\$222.6	\$0.0
Transportation Reimbursement to Parents	\$11,954.7	\$11,954.7	\$0.0	\$11,937.6	\$11,937.6	\$0.0
Reappropriations	\$40,070.5	\$39,636.5	\$434.0	\$38,829.1	\$38,493.5	\$335.7
Textbook Loan Reappropriation	\$40,070.5	\$39,636.5	\$434.0	\$38,829.1	\$38,493.5	\$335.7
NON STATE						
School Infrastructure Fund	\$113.0	\$0.0	\$113.0	\$68.0	\$0.0	\$68.0
School Infrastructure (Debt Admin)	\$113.0	\$0.0	\$113.0	\$68.0	\$0.0	\$68.0

Initiatives	Appropriation			YTD Expenditures		
	Total	Grants	Admin	Total	Grants	Admin
Driver Education	<u>\$18,010.4</u>	<u>\$17,929.6</u>	<u>\$80.8</u>	<u>\$9,011.8</u>	<u>\$8,963.1</u>	<u>\$48.7</u>
Other Funds	<u>\$25,528.9</u>	<u>\$7,420.0</u>	<u>\$18,108.9</u>	<u>\$4,390.0</u>	<u>\$1,303.1</u>	<u>\$3,086.9</u>
Charter Schools Revolving Loan Fund	\$20.0	\$20.0	\$0.0	\$0.0	\$0.0	\$0.0
Emergency Financial Assistance Fund	\$1,000.0	\$1,000.0	\$0.0	\$0.0	\$0.0	\$0.0
Indirect Costs	\$7,015.2	\$0.0	\$7,015.2	\$2,061.2	\$0.0	\$2,061.2
ISBE Special Purpose Trust Fund	\$8,484.8	\$0.0	\$8,484.8	\$18.6	\$0.0	\$18.6
ISBE Teacher Certificate Institute Fund	\$1,008.9	\$0.0	\$1,008.9	\$190.9	\$0.0	\$190.9
School Technology Revolving Loan	\$5,000.0	\$5,000.0	\$0.0	\$1,048.0	\$1,048.0	\$0.0
Teacher Certification Fee Revolving Fund	\$1,600.0	\$0.0	\$1,600.0	\$816.2	\$0.0	\$816.2
Temporary Relocation Revolving Fund	\$1,400.0	\$1,400.0	\$0.0	\$255.1	\$255.1	\$0.0
FEDERAL						
Federal Funds	<u>\$2,295,036.9</u>	<u>\$2,224,431.8</u>	<u>\$70,605.1</u>	<u>\$1,049,688.8</u>	<u>\$1,027,304.0</u>	<u>\$22,384.8</u>
Advanced Placement Fee Payment	\$2,144.0	\$2,000.0	\$144.0	\$489.9	\$489.9	\$0.0
Career & Technical Education	\$56,244.2	\$55,000.0	\$1,244.2	\$31,036.3	\$30,501.9	\$534.4
Career & Technical Education - Technical Prep	\$5,227.5	\$5,000.0	\$227.5	\$2,945.6	\$2,851.3	\$94.3
Charter Schools	\$6,213.0	\$6,000.0	\$213.0	\$271.4	\$249.2	\$22.2
Child Nutrition	\$534,075.8	\$525,000.0	\$9,075.8	\$303,265.8	\$298,776.9	\$4,488.9
Illinois Purchase Care Review Board	\$280.5	\$0.0	\$280.5	\$192.2	\$0.0	\$192.2
Individuals with Disabilities Educ. Act, Pt. B	\$581,892.5	\$570,000.0	\$11,892.5	\$321,043.0	\$315,898.4	\$5,144.6
IDEA - Deaf Blind, Part C	\$450.0	\$450.0	\$0.0	\$182.0	\$182.0	\$0.0
IDEA - Improvement Plan	\$2,730.3	\$2,500.0	\$230.3	\$882.5	\$855.2	\$27.3
IDEA - Model Outreach	\$400.0	\$400.0	\$0.0	\$0.0	\$0.0	\$0.0
IDEA - Pre-School	\$25,728.4	\$25,000.0	\$728.4	\$10,745.1	\$10,423.5	\$321.6
Learn and Serve America	\$2,552.0	\$2,500.0	\$52.0	\$414.8	\$376.8	\$38.0
Math & Science Partnerships	\$9,386.0	\$9,000.0	\$386.0	\$1,807.9	\$1,674.1	\$133.8
Integration of Schools & Mental Health System	\$400.0	\$166.3	\$233.7	\$86.1	\$25.8	\$60.3
National Center for Education Statistics	\$204.0	\$0.0	\$204.0	\$91.1	\$0.0	\$91.1
ONPAR	\$2,000.0	\$800.0	\$1,200.0	\$129.7	\$129.7	\$0.0
Refugee	\$2,001.0	\$2,000.0	\$1.0	\$0.0	\$0.0	\$0.0
School Health Programs	\$1,039.9	\$0.0	\$1,039.9	\$96.2	\$0.0	\$96.2
Title I - Basic Programs	\$641,441.4	\$634,905.0	\$6,536.4	\$260,004.1	\$257,133.6	\$2,870.5
Title I - Comprehensive School Reform	\$65.9	\$0.0	\$65.9	\$0.0	\$0.0	\$0.0
Title I - Education of Migratory Children	\$4,793.3	\$4,695.0	\$98.3	\$535.9	\$511.8	\$24.1
Title I - Even Start Family Literacy Programs	\$4,821.1	\$4,500.0	\$321.1	\$1,793.9	\$1,693.2	\$100.7
Title I - Neglected and Delinquent	\$1,436.5	\$1,400.0	\$36.5	\$609.5	\$609.5	\$0.0

Initiatives	Appropriation			YTD Expenditures		
	Total	Grants	Admin	Total	Grants	Admin
Title I - Reading First	\$62,907.7	\$60,000.0	\$2,907.7	\$18,607.1	\$17,980.2	\$626.9
Title I - School Improvement	\$30,868.2	\$29,500.0	\$1,368.2	\$12,430.6	\$11,980.6	\$450.0
Title II - Enhance Ed through Technology	\$20,847.5	\$20,000.0	\$847.5	\$6,823.7	\$6,658.1	\$165.6
Title II - Quality Teachers	\$137,872.3	\$135,000.0	\$2,872.3	\$38,464.1	\$37,798.5	\$665.6
Title III - English Language Acquisition	\$41,811.5	\$40,000.0	\$1,811.5	\$6,205.4	\$5,800.2	\$405.2
Title IV - 21st Century Schools	\$56,586.3	\$55,000.0	\$1,586.3	\$18,460.6	\$17,768.3	\$692.3
Title IV - Safe & Drug Free Schools	\$15,348.2	\$15,000.0	\$348.2	\$4,390.6	\$4,225.8	\$164.8
Title V - Innovative Programs	\$8,280.7	\$8,000.0	\$280.7	\$86.9	\$86.9	\$0.0
Title VI - Rural & Low Income Programs	\$1,552.0	\$1,500.0	\$52.0	\$334.1	\$334.1	\$0.0
Title VI - State Assessment	\$23,780.3	\$0.0	\$23,780.3	\$4,859.0	\$0.0	\$4,859.0
Title X - McKinney Homeless Assistance	\$3,519.7	\$3,250.0	\$269.7	\$1,931.5	\$1,867.4	\$64.1
Transition to Teaching	\$1,135.3	\$1,000.0	\$135.3	\$437.2	\$386.2	\$51.0
Special Congressional Initiatives	\$5,000.0	\$4,865.5	\$134.5	\$34.7	\$34.7	\$0.0
TOTAL - ALL FUNDS:	\$9,789,043.9	\$9,631,819.4	\$157,224.5	\$5,564,341.4	\$5,507,831.7	\$56,509.6

ILLINOIS STATE BOARD OF EDUCATION
Financial Status Report
July 1, 2008 through February 28, 2009
(Fiscal Year 2009)

	Appropriation Amount	Expenditures to Date	Unexpended Appropriation	Percentage spent YTD	Percentage Unexpended
<u>General Revenue Fund</u>					
Personal Services and Related Expenditures	17,375,800	12,159,213	5,216,587	69.98%	30.02%
Contractual Services	5,857,200	3,985,703	1,871,497	68.05%	31.95%
Travel	313,700	159,086	154,614	50.71%	49.29%
Commodities	59,100	50,244	8,856	85.02%	14.98%
Printing	85,200	23,885	61,315	28.03%	71.97%
Equipment	70,900	7,520	63,380	10.61%	89.39%
Telecommunications	468,600	196,873	271,727	42.01%	57.99%
Operation of Automotive Equipment	20,000	9,103	10,897	45.51%	54.49%
Lump Sums	33,502,000	9,042,279	24,459,721	26.99%	73.01%
<i>Sub-total</i>	57,752,500	25,633,905	32,118,595	44.39%	55.61%
Awards and Grants	2,543,734,893	1,391,957,325	1,151,777,568	54.72%	45.28%
Total General Revenue Fund	2,601,487,393	1,417,591,230	1,183,896,163	54.49%	45.51%
<u>Education Assistance Fund</u>					
Awards and Grants	1,372,627,300	500,398,468	872,228,832	36.46%	63.54%
Total Education Assistance Fund	1,372,627,300	500,398,468	872,228,832	36.46%	63.54%
<u>Common School Fund</u>					
Regional Superintendent Salaries	9,100,000	6,002,937	3,097,063	65.97%	34.03%
General State Aid	3,467,140,000	2,577,190,082	889,949,918	74.33%	25.67%
Total Common School Fund	3,476,240,000	2,583,193,019	893,046,981	74.31%	25.69%
<u>Teacher Certification Fee Revolving Fund</u>					
Lump Sums	1,600,000	816,209	783,791	51.01%	48.99%
Total Teacher Certification Fee Revolving Fund	1,600,000	816,209	783,791	51.01%	48.99%

ILLINOIS STATE BOARD OF EDUCATION
Financial Status Report
July 1, 2008 through February 28, 2009
(Fiscal Year 2009)

	Appropriation Amount	Expenditures to Date	Unexpended Appropriation	Percentage spent YTD	Percentage Unexpended
<u>Drivers Education Fund</u>					
Personal Services and Related Expenditures	80,800	48,723	32,077	60.30%	39.70%
Awards and Grants	17,929,600	8,963,115	8,966,485	49.99%	50.01%
Total Drivers Education Fund	18,010,400	9,011,839	8,998,561	50.04%	49.96%
<u>School Dist. Emergency Financial Asst. Fund</u>					
Awards and Grants	1,000,000	-	1,000,000	0.00%	100.00%
<u>SBE Special Purpose Trust Fund</u>					
Lump Sums	15,500,000	2,079,763	13,420,237	13.42%	86.58%
<u>SBE Teacher Certification Institution Fund</u>					
Lump Sums	1,008,900	190,946	817,954	18.93%	81.07%
<u>SBE Federal Department of Agriculture Fund</u>					
Personal Services and Related Expenditures	5,015,800	3,094,013	1,921,787	61.69%	38.31%
Contractual Services	3,250,000	1,211,253	2,038,747	37.27%	62.73%
Travel	375,000	151,776	223,224	40.47%	59.53%
Commodities	85,000	13,736	71,264	16.16%	83.84%
Printing	150,000	13,489	136,511	8.99%	91.01%
Equipment	150,000	4,680	145,320	3.12%	96.88%
Telecommunications	50,000	-	50,000	0.00%	100.00%
Sub-total	9,075,800	4,488,947	4,586,853	49.46%	50.54%
Awards and Grants	525,000,000	298,776,869	226,223,131	56.91%	43.09%
Total SBE Federal Department of Agriculture Fund	534,075,800	303,265,816	230,809,984	56.78%	43.22%

ILLINOIS STATE BOARD OF EDUCATION
Financial Status Report
July 1, 2008 through February 28, 2009
(Fiscal Year 2009)

	Appropriation Amount	Expenditures to Date	Unexpended Appropriation	Percentage spent YTD	Percentage Unexpended
<u>SBE Federal Agency Services Fund</u>					
Personal Services and Related Expenditures	120,900	79,267	41,633	65.56%	34.44%
Contractual Services	900,000	38,028	861,972	4.23%	95.77%
Travel	30,000	6,922	23,078	23.07%	76.93%
Commodities	15,000	10,001	4,999	66.67%	33.33%
Printing	7,000	-	7,000	0.00%	100.00%
Equipment	11,000	-	11,000	0.00%	100.00%
Telecommunications	9,000	-	9,000	0.00%	100.00%
<i>Sub-total</i>	1,092,900	134,218	958,682	12.28%	87.72%
Awards and Grants	4,500,000	376,798	4,123,202	8.37%	91.63%
Total SBE Federal Agency Services Fund	5,592,900	511,016	5,081,884	9.14%	90.86%
<u>SBE Federal Department of Education Fund</u>					
Personal Services and Related Expenditures	17,511,400	9,390,976	8,120,424	53.63%	46.37%
Contractual Services	14,700,500	3,036,394	11,664,106	20.66%	79.34%
Travel	1,375,000	358,544	1,016,456	26.08%	73.92%
Commodities	305,000	14,353	290,647	4.71%	95.29%
Printing	341,000	6,944	334,056	2.04%	97.96%
Equipment	455,000	35,032	419,968	7.70%	92.30%
Telecommunications	400,000	-	400,000	0.00%	100.00%
Lump Sums	23,780,300	4,859,032	18,921,268	20.43%	79.57%
<i>Sub-total</i>	58,868,200	17,701,276	41,166,924	30.07%	69.93%
Awards and Grants	1,696,500,000	728,210,652	968,289,348	42.92%	57.08%
Total SBE Federal Department of Education Fund	1,755,368,200	745,911,928	1,009,456,272	42.49%	57.51%
<u>Charter Schools Revolving Loan Program Fund</u>					
Awards and Grants	20,000	-	20,000	0.00%	100.00%
<u>School Infrastructure Fund</u>					
Personal Services and Related Expenditures	113,000	68,032	44,968	60.21%	39.79%

ILLINOIS STATE BOARD OF EDUCATION
Financial Status Report
July 1, 2008 through February 28, 2009
(Fiscal Year 2009)

	Appropriation Amount	Expenditures to Date	Unexpended Appropriation	Percentage spent YTD	Percentage Unexpended
<i>School Technology Revolving Loan Program Fund</i>					
Awards and Grants	5,000,000	1,048,026	3,951,974	20.96%	79.04%
<i>Temporary Relocation Expenses Revolving Grant Fund</i>					
Awards and Grants	1,400,000	255,069	1,144,931	18.22%	81.78%
ISBE TOTALS	9,789,043,893	5,564,341,361	4,224,702,532	56.84%	43.16%

ILLINOIS STATE BOARD OF EDUCATION
Combined Financial Status Report
July 1, 2008 through February 28, 2009
(Fiscal Year 2009)

	Appropriation Amount	Expenditures to Date (Direct)	Federal Indirect Cost Recovery Expenditures	Unexpended Appropriation	Percentage spent YTD	Percentage Unexpended
<u>All Funds</u>						
Personal Services and Related Expenditures	41,641,563	24,840,224	1,423,863	15,377,476	59.65%	36.93%
Contractual Services	25,231,825	8,271,378	524,125	16,436,322	32.78%	65.14%
Travel	2,111,930	676,328	18,230	1,417,372	32.02%	67.11%
Commodities	481,186	88,334	17,086	375,766	18.36%	78.09%
Printing	583,200	44,318	-	538,882	7.60%	92.40%
Equipment	704,677	47,232	17,777	639,668	6.70%	90.77%
Telecommunications	987,686	196,873	60,086	730,727	19.93%	73.98%
Operation of Automotive Equipment	20,000	9,103	-	10,897	45.51%	54.49%
Lump Sums	73,330,031	14,927,060	-	58,402,971	20.36%	79.64%
Sub-total	145,092,100	51,162,019	2,061,169	93,930,081	35.26%	64.74%
Awards and Grants	9,643,951,793	5,513,179,342	-	4,130,772,451	57.17%	42.83%
Total All Funds	9,789,043,893	5,562,280,192	2,061,169	4,224,702,532	56.82%	43.16%
<u>General Revenue Fund</u>						
Personal Services and Related Expenditures	17,375,800	12,159,213	-	5,216,587	69.98%	30.02%
Contractual Services	5,857,200	3,985,703	-	1,871,497	68.05%	31.95%
Travel	313,700	159,086	-	154,614	50.71%	49.29%
Commodities	59,100	50,244	-	8,856	85.02%	14.98%
Printing	85,200	23,885	-	61,315	28.03%	71.97%
Equipment	70,900	7,520	-	63,380	10.61%	89.39%
Telecommunications	468,600	196,873	-	271,727	42.01%	57.99%
Operation of Automotive Equipment	20,000	9,103	-	10,897	45.51%	54.49%
Lump Sums	33,502,000	9,042,279	-	24,459,721	26.99%	73.01%
Sub-total	57,752,500	25,633,905	-	32,118,595	44.39%	55.61%
Awards and Grants	2,543,734,893	1,391,957,325	-	1,151,777,568	54.72%	45.28%
Total General Revenue Fund	2,601,487,393	1,417,591,230	-	1,183,896,163	54.49%	45.51%
<u>Other State Funds</u>						
Personal Services and Related Expenditures	193,800	116,755	-	77,045	60.25%	39.75%
Lump Sums	18,108,900	3,086,918	-	15,021,982	17.05%	82.95%
Sub-total	18,302,700	3,203,673	-	15,099,027	17.50%	82.50%
Awards and Grants	4,874,216,900	3,093,857,698	-	1,780,359,202	63.47%	36.53%
Total Other State Funds	4,892,519,600	3,097,061,371	-	1,795,458,229	63.30%	36.70%
<u>Federal Funds</u>						
Personal Services and Related Expenditures	22,648,100	12,564,256	-	10,083,844	55.48%	44.52%
Contractual Services	18,850,500	4,285,675	-	14,564,825	22.74%	77.26%
Travel	1,780,000	517,242	-	1,262,758	29.06%	70.94%
Commodities	405,000	38,090	-	366,910	9.40%	90.60%
Printing	498,000	20,433	-	477,567	4.10%	95.90%
Equipment	616,000	39,713	-	576,287	6.45%	93.55%
Telecommunications	459,000	-	-	459,000	0.00%	100.00%
Lump Sums	23,780,300	4,859,032	-	18,921,268	20.43%	79.57%
Sub-total	69,036,900	22,324,441	-	46,712,459	32.34%	67.66%
Awards and Grants	2,226,000,000	1,027,364,319	-	1,198,635,681	46.15%	53.85%
Total Federal Funds	2,295,036,900	1,049,688,760	-	1,245,348,140	45.74%	54.26%

ILLINOIS STATE BOARD OF EDUCATION
Awards and Grants Expenditures
July 1, 2008 through February 28, 2009
(Fiscal Year 2009)

<u><i>General Revenue Fund</i></u>	Appropriation Amount	Expenditures to Date	Unexpended Appropriation	Percentage spent YTD	Percentage Unexpended
Parental Participation Pilot Project	100,000	73,800	26,200	73.80%	26.20%
Regional Superintendents Initiatives	500,000	316,664	183,336	63.33%	36.67%
Rural Technology Initiatives	4,000,000	-	4,000,000	0.00%	100.00%
Targeted Interventions	4,000,000	1,386,152	2,613,848	34.65%	65.35%
Classroom Cubed	2,000,000	869,492	1,130,508	43.47%	56.53%
Hard to Staff Schools	3,000,000	-	3,000,000	0.00%	100.00%
Regional Superintendent Services-Bus Driver Training	70,000	70,000	-	100.00%	0.00%
Re-enrollment Student Program	4,000,000	2,760,000	1,240,000	69.00%	31.00%
Response to Intervention	2,000,000	-	2,000,000	0.00%	100.00%
Mentoring and After School Programs	9,700,000	817,135	8,882,865	8.42%	91.58%
Chicago Aerospace Initiative	920,000	758,000	162,000	82.39%	17.61%
Homeless Education	3,000,000	-	3,000,000	0.00%	100.00%
Adler Planetarium	200,000	-	200,000	0.00%	100.00%
Truant Alternative/Optional Education	20,078,100	16,034,871	4,043,229	79.86%	20.14%
Metro East Consortium/Student Advocacy	217,100	130,260	86,840	60.00%	40.00%
Jobs for Illinois Grads	4,000,000	3,000,001	999,999	75.00%	25.00%
ROE and ISC Operations Reimbursement	6,318,000	5,261,367	1,056,633	83.28%	16.72%
IL Governmental Student Internship	129,900	75,000	54,900	57.74%	42.26%
Standards, Assessments and Accountability	3,042,700	1,661,013	1,381,687	54.59%	45.41%
Teachers and Administrators Mentoring Program	13,378,800	3,349,594	10,029,206	25.04%	74.96%
Principal Mentoring Program	1,291,600	-	1,291,600	0.00%	100.00%
Chicago Principals and Administrators	1,000,000	-	1,000,000	0.00%	100.00%
Minority Transition Program Reimbursement	578,800	356,800	222,000	61.64%	38.36%
Philip Rock Center Reimbursement	3,577,800	2,627,800	950,000	73.45%	26.55%
Educational Materials Unit	2,121,000	1,525,000	596,000	71.90%	28.10%
Gifted Education	7,000,000	-	7,000,000	0.00%	100.00%
Technology for Success	2,719,700	1,994,226	725,474	73.33%	26.67%
Special Ed - Private Facility Tuition	151,600,000	112,258,628	39,341,372	74.05%	25.95%
Special Ed - Extraordinary	331,051,100	171,350,808	159,700,292	51.76%	48.24%
Special Ed - Personnel	426,100,000	253,742,534	172,357,466	59.55%	40.45%
Special Ed - Orphanage	101,800,000	70,011,378	31,788,622	68.77%	31.23%
Bilingual Education - Chicago	41,500,000	41,500,000	-	100.00%	0.00%
Bilingual Education - Downstate	34,152,000	14,956,150	19,195,850	43.79%	56.21%
Transportation - Regular/Vocational	339,500,000	172,746,620	166,753,380	50.88%	49.12%
Transportation - Special Education	383,300,000	132,813,449	250,486,551	34.65%	65.35%
State Free Lunch and Breakfast	26,300,000	20,166,032	6,133,968	76.68%	23.32%

ILLINOIS STATE BOARD OF EDUCATION
Awards and Grants Expenditures
July 1, 2008 through February 28, 2009
(Fiscal Year 2009)

<i><u>General Revenue Fund, continued</u></i>	Appropriation Amount	Expenditures to Date	Unexpended Appropriation	Percentage spent YTD	Percentage Unexpended
Illinois Breakfast Incentive Reimbursement	723,500	147,740	575,760	20.42%	79.58%
Textbook Loan Program	42,826,500	-	42,826,500	0.00%	100.00%
Textbook Loan Program Reappropriation	39,636,500	38,494,451	1,142,049	97.12%	2.88%
Advanced Placement Classes	1,635,300	989,376	645,924	60.50%	39.50%
Grow Your Own Teachers	3,031,200	1,585,915	1,445,285	52.32%	47.68%
Parent/Guardian Transportation Reimbursement	11,954,700	11,937,594	17,106	99.86%	0.14%
State Charter Schools	3,421,500	1,711,667	1,709,833	50.03%	49.97%
Tax Equivalent Grants	222,600	222,600	-	100.00%	0.00%
GRF Transfer/Temporary Relocation Rev. Grant Fund	100,000	100,000	-	100.00%	0.00%
Recording for Blind & Dyslexic Grant	1,218,800	1,018,000	200,800	83.52%	16.48%
Vocational Ed. - Agriculture Education	3,381,200	2,533,061	848,139	74.92%	25.08%
Teach for America	450,000	-	450,000	0.00%	100.00%
Illinois Economic Education Program	250,000	-	250,000	0.00%	100.00%
Class Size Reduction Pilot Project	8,000,000	3,592,473	4,407,527	44.91%	55.09%
Autism Training & Tech Assistance	100,000	66,670	33,330	66.67%	33.33%
Children's Mental Health Partnership	2,496,800	821,452	1,675,348	32.90%	67.10%
Healthy Kids/Healthy Minds/Expanded Vision	3,000,000	1,500,000	1,500,000	50.00%	50.00%
Arts and Foreign Language	4,000,000	1,459,006	2,540,994	36.48%	63.52%
Grants for School Transportation	1,200,000	763,637	436,363	63.64%	36.36%
Healthy Kids/Healthy Minds/Expanded Vision	1,000,000	-	1,000,000	0.00%	100.00%
Alternative Education	18,535,500	11,046,891	7,488,609	59.60%	40.40%
Early Childhood Block Grant	376,324,500	245,723,677	130,600,823	65.30%	34.70%
ROE Services - Supervisory Expenses	102,000	102,000	-	100.00%	0.00%
Orphanage Tuition	11,600,000	6,365,444	5,234,556	54.87%	45.13%
Reorganization Incentive	7,850,000	5,475,319	2,374,681	69.75%	30.25%
Special Education - Summer School	11,000,000	10,854,376	145,624	98.68%	1.32%
Transitional Assistance	36,763,600	-	36,763,600	0.00%	100.00%
Fast Growth Schools	7,500,000	7,500,000	0	100.00%	0.00%
After School Matters	500,000	-	500,000	0.00%	100.00%
Museum of Science and Industry	200,000	-	200,000	0.00%	100.00%
Total General Revenue Fund	2,533,270,800	1,386,624,122	1,146,646,678	54.74%	45.26%

ILLINOIS STATE BOARD OF EDUCATION
Awards and Grants Expenditures
July 1, 2008 through February 28, 2009
(Fiscal Year 2009)

	Appropriation Amount	Expenditures to Date	Unexpended Appropriation	Percentage spent YTD	Percentage Unexpended
<u>Education Assistance Fund</u>					
Teacher of the Year Program	135,000	38,570	96,430	28.57%	71.43%
Summer Bridges	22,238,100	16,894,420	5,343,680	75.97%	24.03%
Teacher Education	11,485,000	-	11,485,000	0.00%	100.00%
General State Aid	1,123,119,900	341,193,936	781,925,964	30.38%	69.62%
Career and Technical Education	38,562,100	30,234,888	8,327,212	78.41%	21.59%
School Safety & Educational Improvement Block Grant	74,841,000	37,428,053	37,412,947	50.01%	49.99%
Reading Improvement Block Grant	76,139,800	48,502,201	27,637,599	63.70%	36.30%
General State Aid - Hold Harmless	26,106,400	26,106,400	0	100.00%	0.00%
Total Education Assistance Fund	1,372,627,300	500,398,468	872,228,832	36.46%	63.54%
<u>Common School Fund</u>					
Regional Superintendent Salaries	9,100,000	6,002,937	3,097,063	65.97%	34.03%
General State Aid	3,467,140,000	2,577,190,082	889,949,918	74.33%	25.67%
Total Common School Fund	3,476,240,000	2,583,193,019	893,046,981	74.31%	25.69%
<u>Drivers Education Fund</u>					
Driver Education Grants	17,929,600	8,963,115	8,966,485	49.99%	50.01%
Total Drivers Education Fund	17,929,600	8,963,115	8,966,485	49.99%	50.01%
<u>School Dist. Emergency Financial Asst. Fund</u>					
School District Emergency Financial Assistance	1,000,000	-	1,000,000	0.00%	100.00%
Total School Dist. Emergency Fin. Asst. Fund	1,000,000	-	1,000,000	0.00%	100.00%
<u>SBE Federal Department of Agriculture Fund</u>					
Federal Nutrition Programs	525,000,000	298,776,869	226,223,131	56.91%	43.09%
Total SBE Federal Department of Agriculture Fund	525,000,000	298,776,869	226,223,131	56.91%	43.09%

ILLINOIS STATE BOARD OF EDUCATION
Awards and Grants Expenditures
July 1, 2008 through February 28, 2009
(Fiscal Year 2009)

	Appropriation Amount	Expenditures to Date	Unexpended Appropriation	Percentage spent YTD	Percentage Unexpended
<u>SBE Federal Agency Services Fund</u>					
Refugee Services	2,000,000	-	2,000,000	0.00%	100.00%
Learn and Serve America	2,500,000	376,798	2,123,202	15.07%	84.93%
Total SBE Federal Agency Services Fund	4,500,000	376,798	4,123,202	8.37%	91.63%
<u>SBE Federal Department of Education Fund</u>					
Title VI Rural and Low Income Students	1,500,000	334,062	1,165,938	22.27%	77.73%
Title III - English Language Acquisition	40,000,000	5,800,177	34,199,823	14.50%	85.50%
Integration of Mental Health	25,819	25,819	-	100.00%	0.00%
ONPAR	800,000	129,690	670,310	16.21%	83.79%
Enhancing Education Through Technology	20,000,000	6,658,050	13,341,950	33.29%	66.71%
Charter Schools	6,000,000	249,200	5,750,800	4.15%	95.85%
Advanced Placement Fee	2,000,000	489,942	1,510,058	24.50%	75.50%
Title I - Basic	675,000,000	271,928,876	403,071,124	40.29%	59.71%
Title I - Reading First	60,000,000	17,980,197	42,019,803	29.97%	70.03%
Title IV - Safe & Drug Free Schools	15,000,000	4,225,814	10,774,186	28.17%	71.83%
Title IV - 21st Century/Community Service	55,000,000	17,768,287	37,231,713	32.31%	67.69%
Title II - Teacher Quality	135,000,000	37,798,469	97,201,531	28.00%	72.00%
Title II - Transition to Teaching	1,000,000	386,227	613,773	38.62%	61.38%
Title II - Math/Science Partnerships	9,000,000	1,674,103	7,325,897	18.60%	81.40%
Title X - McKinney Homeless	3,250,000	1,867,448	1,382,552	57.46%	42.54%
IDEA - Preschool	25,000,000	10,423,499	14,576,501	41.69%	58.31%
IDEA - Improvement	2,500,000	855,209	1,644,791	34.21%	65.79%
IDEA	570,000,000	315,898,418	254,101,582	55.42%	44.58%
IDEA - Model Outreach	400,000	-	400,000	0.00%	100.00%
IDEA - Deaf/Blind	450,000	182,042	267,958	40.45%	59.55%
Career and Technical Education - Basic Perkins	55,000,000	30,501,944	24,498,056	55.46%	44.54%
Career and Technical Education - Tech Prep	5,000,000	2,851,283	2,148,718	57.03%	42.97%
Special Federal Congressional Initiatives	4,995,500	34,656	4,960,844	0.69%	99.31%
Title V - Innovative Programs	8,000,000	86,923	7,913,077	1.09%	98.91%
Total SBE Federal Department of Education Fund	1,694,921,319	728,150,335	966,770,984	42.96%	57.04%

ILLINOIS STATE BOARD OF EDUCATION
Awards and Grants Expenditures
July 1, 2008 through February 28, 2009
(Fiscal Year 2009)

	Appropriation Amount	Expenditures to Date	Unexpended Appropriation	Percentage spent YTD	Percentage Unexpended
<u>Charter Schools Revolving Loan Program Fund</u>					
Charter Schools Revolving Loans	20,000	-	20,000	0.00%	100.00%
Total Charter Schools Rev. Loan Program Fund	20,000	-	20,000	0.00%	100.00%
<u>School Technology Revolving Loan Program Fund</u>					
School Technology Revolving Loans	5,000,000	1,048,026	3,951,974	20.96%	79.04%
Total School Technology Rev. Loan Program Fund	5,000,000	1,048,026	3,951,974	20.96%	79.04%
<u>Temporary Relocation Expenses Revolving Grant Fund</u>					
Temporary Relocation Revolving Loans/Grants	1,400,000	255,069	1,144,931	18.22%	81.78%
Total Temporary Relocation Exp. Rev. Grant Fund	1,400,000	255,069	1,144,931	18.22%	81.78%
 TOTAL AWARDS AND GRANTS - ALL FUNDS	 9,631,909,019	 5,507,785,822	 4,124,123,197	 57.18%	 42.82%

ILLINOIS STATE BOARD OF EDUCATION
Comparative Statement of Expenditures to Date (February 28)
Fiscal Years 2009 and 2008

	FY09				FY08			
	Appropriation Amount	Expenditures to Date (Direct)	Federal Indirect Cost Reovery Expenditures	Percentage to Date	Appropriation Amount	Expenditures to Date (Direct)	Federal Indirect Cost Reovery Expenditures	Percentage to Date
All Funds								
Personal Services and Related Expenditures	41,641,563	24,840,224	1,423,863	63.07%	40,762,217	24,969,104	711,922	61.26%
Contractual Services	25,231,825	8,271,378	524,125	34.86%	22,962,980	8,210,903	387,180	35.76%
Travel	2,111,930	676,328	18,230	32.89%	2,134,655	655,265	5,955	30.70%
Commodities	481,186	88,334	17,086	21.91%	462,120	78,801	14,020	17.05%
Printing	583,200	44,318	-	7.60%	531,200	82,087	-	15.45%
Equipment	704,677	47,232	17,777	9.23%	775,117	84,132	42,017	10.85%
Telecommunications	987,686	196,873	60,086	26.02%	903,649	211,363	11,049	23.39%
Operation of Automotive Equipment	20,000	9,103	-	45.51%	22,000	10,677	-	48.53%
Lump Sums	73,330,031	14,927,060	-	20.36%	58,990,421	18,675,738	-	31.66%
Sub-total	145,092,100	49,100,850	2,061,169	35.26%	127,544,359	52,978,070	1,172,143	41.54%
Awards and Grants	9,643,951,793	5,513,179,342	-	57.17%	9,188,763,363	4,793,201,977	-	52.16%
Total All Funds	9,789,043,893	5,562,280,192	2,061,169	56.84%	9,316,307,722	4,846,180,048	1,172,143	52.02%
General Revenue Fund								
Personal Services and Related Expenditures	17,375,800	12,159,213	-	69.98%	16,770,500	11,831,508	-	70.55%
Contractual Services	5,857,200	3,985,703	-	68.05%	5,821,000	3,237,465	-	55.62%
Travel	313,700	159,086	-	50.71%	348,700	200,267	-	57.43%
Commodities	59,100	50,244	-	85.02%	59,100	55,844	-	94.49%
Printing	85,200	23,885	-	28.03%	83,200	33,673	-	40.47%
Equipment	70,900	7,520	-	10.61%	107,100	44,659	-	41.70%
Telecommunications	468,600	196,873	-	42.01%	433,600	164,842	-	38.02%
Operation of Automotive Equipment	20,000	9,103	-	45.51%	22,000	10,677	-	48.53%
Lump Sums	33,502,000	9,042,279	-	26.99%	18,474,364	10,701,691	-	57.93%
Sub-total	57,752,500	25,633,905	-	44.39%	42,119,564	26,280,627	-	62.40%
Awards and Grants	2,543,734,893	1,391,957,325	-	54.72%	2,351,678,880	1,243,989,439	-	52.90%
Total General Revenue Fund	2,601,487,393	1,417,591,230	-	54.49%	2,393,798,444	1,270,270,065	-	53.07%
Other State Funds								
Personal Services and Related Expenditures	193,800	116,755	-	60.25%	1,273,400	778,369	-	61.13%
Lump Sums	18,108,900	3,086,918	-	17.05%	17,907,900	2,464,463	-	13.76%
Sub-total	18,302,700	3,203,673	-	17.50%	19,181,300	3,242,833	-	16.91%
Awards and Grants	4,874,216,900	3,093,857,698	-	63.47%	4,737,654,483	2,664,186,423	-	56.23%
Total Other State Funds	4,892,519,600	3,097,061,371	-	63.30%	4,756,835,783	2,667,429,256	-	56.08%
Federal Funds								
Personal Services and Related Expenditures	22,648,100	12,564,256	-	55.48%	22,006,395	12,359,227	-	56.16%
Contractual Services	18,850,500	4,285,675	-	22.74%	16,754,800	4,973,437	-	29.68%
Travel	1,780,000	517,242	-	29.06%	1,780,000	454,998	-	25.56%
Commodities	405,000	38,090	-	9.40%	389,000	22,957	-	5.90%
Printing	498,000	20,433	-	4.10%	448,000	48,414	-	10.81%
Equipment	616,000	39,713	-	6.45%	626,000	39,473	-	6.31%
Telecommunications	459,000	-	-	0.00%	459,000	46,521	-	10.14%
Lump Sums	23,780,300	4,859,032	-	20.43%	23,780,300	6,681,727	-	28.10%
Sub-total	69,036,900	22,324,441	-	32.34%	66,243,495	24,626,754	-	37.18%
Awards and Grants	2,226,000,000	1,027,364,319	-	46.15%	2,099,430,000	885,026,115	-	42.16%
Total Federal Funds	2,295,036,900	1,049,688,760	-	45.74%	2,165,673,495	909,652,869	-	42.00%

**ILLINOIS STATE BOARD OF EDUCATION
FINANCIAL STATUS REPORT - 07/01/08 THROUGH 2/28/09**

	<u>Approp Amount</u>	<u>Expended Year to Date</u>	<u>% Spent Year to Date</u>	<u>February Expenditures</u>	<u>Description</u>
Personal Services and Related	45,865.2	27,837.6	60.7%	3,537.9	Salaries & Benefits
Contractual Services	104,822.6	26,965.8	25.7%	4,330.3	Agency Contracts (see below); Non-Employee Travel; Conferences; Registration Fees
Travel	2,281.4	740.3	32.4%	92.0	Staff Travel
Commodities	740.9	108.4	14.6%	12.7	Supplies; Books
Printing	918.3	46.7	5.1%	8.7	Agency Printing
Equipment	886.8	101.5	11.4%	42.3	Computers; Printers; Furniture
Telecommunications	1,145.9	258.8	22.6%	50.1	Telecommunications Expenses
Auto Operations	20.0	9.1	45.5%	1.1	Operation of Agency Autos
Prompt Payment Act	437.4	335.7	76.7%	68.3	Prompt Payment
Refunds	5.7	5.7	100.0%	0	Refunds
Temp. Relocation Revolving Fund	100.0	100.0	100.0%	0.0	Interfund Cash Transfer
Grants	9,631,819.7	5,507,831.7	57.2%	756,880.4	See Detail Below

	<u>Funded Amount</u>	<u>Expended Year to Date</u>	<u>% Spent Year to Date</u>	<u>February Expenditures</u>	<u>Description</u>
Agency Contracts Breakdown:					
<u>State Superintendent</u>					
John Perkins					School District Liaison
GRF	79.0	51.6	65.3%	8.5	
University of Illinois					Services of Susie Morrison to assist with Board priorities; serve on senior leadership team, etc.
GRF	133.1	66.5	50.0%	22.2	
<u>Human Resources</u>					
Bell, Boyd and Lloyd					Arbitration matters
GRF	75.0	38.3	51.1%	4.7	
Other State	75.0	0.0	0.0%	0.0	
<u>Administrative Services</u>					
Xerox Corp					Copier Maintenance Repairs
GRF	85.0	85.0	100.0%	0.0	
Other State	100.0	25.5	25.5%	8.6	
Alzina					Building lease in Springfield
GRF	1,479.4	1,479.4	100.0%	37.9	
Other State	357.8	357.8	100.0%	7.8	
Federal	851.9	851.9	100.0%	18.4	
Facilities Management					Rent for Chicago Office, Thompson Center
GRF	89.0	88.9	99.9%	0.0	
Other State	13.4	0.0	0.0%	0.0	
Federal	161.3	64.8	40.2%	22.0	
<u>General Counsel/Legal</u>					
42 Impartial Hearing Officers					Teacher Dismissal Hearing Officers
GRF	168.0	10.1	6.0%	1.0	

	<u>Funded Amount</u>	<u>Expended Year to Date</u>	<u>% Spent Year to Date</u>	<u>February Expenditures</u>	<u>Description</u>
Franczek, Sullivan PC					Attorney General's Office appointed Res Vazquez to continue as Legal Counsel for the ongoing implementation and monitoring of the Corey H. consent decree
GRF	120.0	77.2	64.3%	0.0	
Kubiesa, Spiroff, Gosselar, Acker & DeBlasio, P.C.					Assist in recovery of Grant funds from West Harvey-Dixmoor SD #147 and represent ISBE with other cases as assigned.
GRF	50.0	49.9	99.8%	0.3	
Other State	50.0	39.0	78.0%	10.5	
Shesky & Froelich LTD					Prosecution of Educator misconduct cases and any other cases ISBE may request
GRF	100.0	15.6	15.6%	12.0	
<u>Data Systems</u>					
IBM					Development of Statewide Student Information System
GRF	1,910.5	1,150.0	60.2%	0.0	
Federal	1,459.5	575.0	39.4%	0.0	
Utilistar					Data analysis and reporting for Supplemental Education Services
Federal	50.0	20.7	41.4%	0.0	
Ashbaugh & Associates					Programmer for CERTS System to merge into TCIS/OTIS
Other State	71.9	65.5	91.1%	0.0	
Ashbaugh & Associates					Two programmers for Child Nutrition System - MY08211
Federal	174.9	111.7	63.9%	9.9	
Ashbaugh & Associates					Two programmers for Child Nutrition System/ACES - 187
Federal	307.5	150.7	49.0%	7.1	
Capitol Strategies					Programmer for Child Nutrition/ ACES - MY07211
Federal	163.6	88.1	53.9%	16.3	
Capitol Strategies					Programmer for Entity System - MY07212
GRF	150.8	76.6	50.8%	4.3	
Capitol Strategies					Programmer for Child Nutrition System - MY08212
Federal	291.2	180.6	62.0%	29.7	
Ashbaugh & Associates					Programmer for Teacher Certification Information System and Educator Certification System
Other State	74.4	11.5	15.5%	6.0	
<u>Curriculum & Instruction</u>					
IL Caucus for Adolescent Health					HIV Prevention Education
Federal	50.0	0.0	0.0%	0.0	
Children's Memorial Hospital					2009 Youth Risk Behavior Survey
Federal	80.0	0.0	0.0%	0.0	
Linda Rakers					Budget manager for four federal programs
Federal	60.0	15.1	25.2%	0.8	
MGT of America, Inc.					Reading First Statewide Evaluation
Federal	271.1	158.2	58.4%	22.6	
The Center: Resources for Teaching and					Learn and Serve America Program
Federal	111.0	31.7	28.6%	7.6	
Elizabeth Oyer					Evaluation and Research of Illinois Math & Science Partnerships Program
Federal	68.8	34.4	50.0%	34.4	
Sangamon County ROE					Statewide Education Initiatives (Lieberman)
Federal	53.0	26.5	50.0%	0.0	
IL Math & Science Academy					Act as fiscal agent for ISBE for the Illinois Virtual High School (IVHS) Program
GRF	1,250.0	995.0	79.6%	0.0	
<u>Early Childhood</u>					
Henderson Mercer Warren - ROE 27					Third party monitoring of Early Childhood Block Grant Programs
GRF	700.0	420.0	60.0%	140.0	
Erikson Institute					Early Childhood Social and Emotional Consultation
GRF	1,120.0	912.5	81.5%	207.5	
Erikson Institute					Early Childhood Evaluation
GRF	1,120.0	620.0	55.4%	370.0	

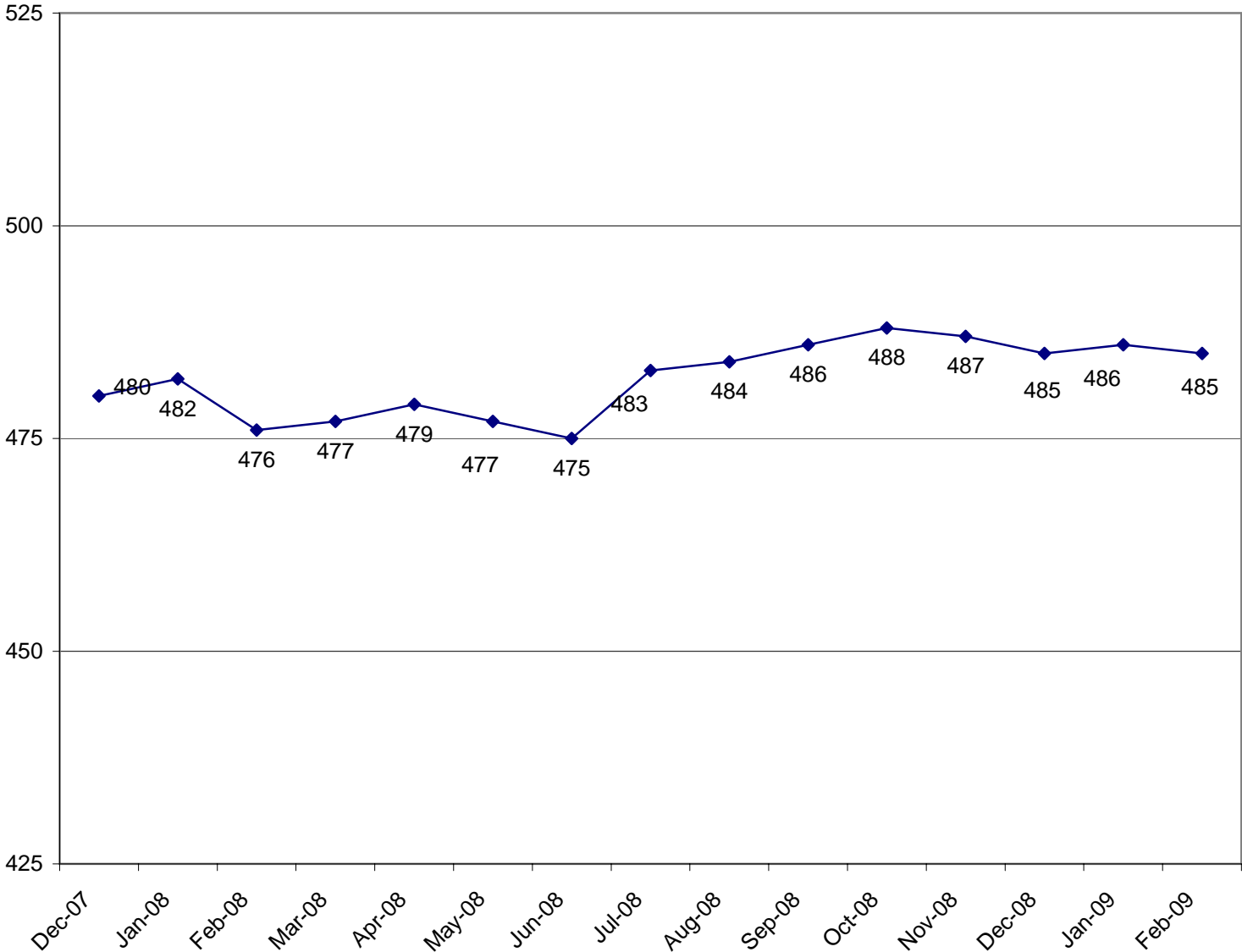
	<u>Funded Amount</u>	<u>Expended Year to Date</u>	<u>% Spent Year to Date</u>	<u>February Expenditures</u>	<u>Description</u>
<u>English Language Learning</u>					
Illinois Migrant Council					Support and technical assistance to the Migrant Education Program - contract ends 8/31/08
Federal	99.8	88.4	88.6%	0.0	
Illinois Migrant Council					Support & technical assistance to the Migrant Education Program - contract began 9/1/08
Federal	354.2	128.3	36.2%	0.0	
Illinois Department of Human Services					Welcoming Centers
Federal	50.0	0.0	0.0%	0.0	
<u>Special Education Services</u>					
15 Hearing Officers					Impartial Hearing Officers in the local-level due process hearing/Section 14-8.02 of the School Code
Federal	445.0	268.7	60.4%	25.4	
9 Mediation Agreements					IDEA mandates ISBE to offer mediation services
Federal	97.7	53.2	54.5%	6.6	
Hupp Information Technology					Customize the Special Ed Data Systems and add critical indicators for the mediation process
Federal	331.4	144.5	43.6%	10.8	
ROE # 20					Harrisburg Project - Manage software by special education districts and co-ops
Federal	735.0	513.0	69.8%	55.5	
3 Corey H. CPS Monitors					Corey H. Settlement - CPS Monitors
Federal	60.0	33.6	56.0%	8.6	
Gail Imobersteg					Evaluation of Hearing Officers
Federal	50.0	29.2	58.4%	4.2	
Measurement Inc.					Parent Surveys - two cycles of surveys this fiscal year
Federal	61.0	20.3	33.3%	0.0	
Loyola University					Assist in implementation of evaluation of special education programs
GRF	78.6	16.2	20.6%	0.0	
Federal	40.6	40.6	100.0%	0.0	
<u>Grants & Programs</u>					
Education Innovations					Evaluation Model for SES Providers
Federal	82.4	0.0	0.0%	0.0	
Northern Illinois University					Comprehensive external evaluation of the 21st Century Program
Federal	165.7	53.8	32.5%	0.0	
Learning Point Associates					Statewide technical assistance and monitoring for the 21st Century Program
Federal	500.0	124.9	25.0%	0.0	
Measurement, Inc.					Evaluation Services for RESPROS
Federal	89.9	22.0	24.5%	0.0	
Academic Development, Inc.					Technical assistance to schools/districts in developing evaluations for the content and effectiveness of the parental involvement policy activities and programs for improving the academic quality of schools through the spread of internet technology.
Federal	84.3	32.9	39.0%	0.0	
<u>Assessment</u>					
Metri Tech, Inc.					Develop, administer, retrieve, analyze, and score the Consumer Ed Proficiency Test
GRF	117.5	68.6	58.4%	9.8	
Measurement Inc.					Writing component of ISAT
GRF	200.9	0.0	0.0%	0.0	
NCS Pearson (Harcourt)					Formerly Harcourt Contract - Enhanced Statewide Student Assessment System - MY05647
GRF	5,002.4	3,451.0	69.0%	0.0	
University of Illinois					Assessment Evaluation
GRF	125.0	125.0	100.0%	0.0	
Federal	125.0	0.0	0.0%	0.0	
NCS Pearson, Inc.					IAA Test (MY066410)
Federal	2,896.7	1,659.4	57.3%	927.9	

	<u>Funded Amount</u>	<u>Expended Year to Date</u>	<u>% Spent Year to Date</u>	<u>February Expenditures</u>	<u>Description</u>
Harte-Hanks					Third Party Oversight
GRF	150.0	133.6	89.1%	0.0	
Federal	100.0	33.1	33.1%	0.0	
Wisconsin University - WIDA Consortium					Title III Requirements for the ACCESS test (bilingual). Validated through comparative studies by WIDA Consortia
GRF	4,465.3	0.0	0.0%	0.0	
NCS Pearson, Inc.					Implement ISAT Test and State Assessment Accountability Requirements - MY07645
GRF	4,534.0	4,183.6	92.3%	1,045.9	
Federal	8,763.6	3,137.7	35.8%	0.0	
American College Testing					ACT Test - College Entrance Exam
GRF	5,121.9	0.0	0.0%	0.0	
Federal	4,110.0	0.0	0.0%	0.0	
<u>Educator Certification</u>					
Target Area Development Corp					Grow Your Own Initiative
GRF	350.0	204.2	58.3%	29.2	
Philliber Research Associates					Evaluation of Grow Your Own Initiative
GRF	118.2	66.5	56.3%	9.5	
<u>Educator and School Development</u>					
Illinois Principals Association					New Principals Mentoring Program
Other State	1,804.2	600.0	33.3%	0.0	
4 Hearing Officers					Certification revocation hearing officers
Other State	133.7	0.1	0.1%	0.0	
Iroquois-Kankakee County ROE					National Board of Professional Teaching Standards to serve schools outside City of Chicago - Component 2
Federal	239.0	69.5	29.1%	0.0	
Illinois State University					National Board of Professional Teaching Standards to serve schools outside City of Chicago - Component 1
Federal	680.4	110.0	16.2%	0.0	
University of Illinois					New Illinois Teacher Collaborative
GRF	520.6	310.6	59.7%	105.0	
<u>Standards & Assessments</u>					
Northern Illinois University					A "live data" website for an Illinois Interactive Report Card
GRF	539.1	486.0	90.2%	0.0	
Federal	458.7	0.0	0.0%	0.0	
<u>Fiscal and Procurement</u>					
Acculngua International					Translation of documents from English to other languages
GRF	66.5	8.0	12.0%	0.0	
Federal	54.0	3.2	5.9%	0.0	
<u>Funding & Disbursements</u>					
MTW Solutions, LLC					Develop mechanism to extract data from e-Grants System
GRF	30.7	2.9	9.4%	0.0	
Federal	19.3	3.0	15.5%	0.0	
<u>Nutrition Programs</u>					
Southern Illinois University					Evaluation and reviews for School Meals Initiative (SMI)
Federal	195.5	81.1	41.5%	26.3	
Legal Resolve, Inc.					Administrative Hearing Officer for Child Care Food Program
Federal	100.0	34.7	34.7%	0.3	
Department of Public Health					Summer food inspections
Federal	75.0	75.0	100.0%	0.0	

	<u>Funded Amount</u>	<u>Expended Year to Date</u>	<u>% Spent Year to Date</u>	<u>February Expenditures</u>	<u>Description</u>
Grants Breakdown:					
General State Aid	4,616,366.3	2,944,490.4	63.8%	415,533.5	Formula
Title I - Low Income	675,000.0	271,928.9	40.3%	83,262.0	Formula
IDEA	570,000.0	315,897.3	55.4%	52,449.6	Formula
Child Nutrition	525,000.0	298,776.9	56.9%	47,587.3	Formula - Reimbursement
Spec Ed Personnel	426,100.0	253,742.4	59.5%	0.0	Formula
Transportation Spec Ed	383,300.0	132,813.4	34.6%	0.0	Formula
Early Childhood Block	376,324.5	245,723.7	65.3%	67,891.7	Block grant for Pre-K, parent training and prevention initiative
Transportation Reg/Voc	339,500.0	172,746.6	50.9%	0.0	Formula
Spec Ed Extraordinary	331,051.1	171,350.8	51.8%	40,045.3	Mandated Categorical
Spec Ed Private Facility Tuition	151,600.0	112,258.6	74.0%	0.0	Formula
Title II - Quality Teachers	135,000.0	37,798.5	28.0%	7,898.7	Formula
Spec Ed Orphanage	101,800.0	70,011.4	68.8%	500.0	Formula
Reading Imp. Block Grant	76,139.8	48,502.2	63.7%	871.5	Formula
ADA Sch. Safety and Ed. Bl.	74,841.0	37,428.1	50.0%	0.0	Formula
Title I - Reading First	60,000.0	17,980.2	30.0%	1,182.7	Competitive and formula grants
Title IV - 21st Century	55,000.0	17,768.3	32.3%	1,931.4	Competitive
Voc Ed - Federal	55,000.0	30,501.9	55.5%	5,937.0	Formula and Competitive - to improve student academic and career skills
Textbook Program	42,826.5	0.0	0.0%	0.0	Payment for textbooks purchased during year
Bilingual Education - Chicago	41,500.0	41,500.0	100.0%	0.0	Chicago Block Grant
Title III - English Language Acq	40,000.0	5,800.2	14.5%	1,919.0	Grant
Textbook Loan - Reappropriation	39,636.5	38,493.5	97.1%	1,133.8	Payment for textbooks purchased during previous year
Vocational Education - State	38,562.1	30,234.9	78.4%	3,341.9	Formula
Transition Assistance	36,763.6	0.0	0.0%	0.0	Formula
Bilingual Education - Downstate	34,152.0	14,956.2	43.8%	8,038.9	Mandated Categorical
State Free Lunch and Breakfast	26,300.0	20,166.0	76.7%	1,251.0	Mandated Categorical - Reimbursement
Preschool - Spec Ed	25,000.0	10,423.5	41.7%	1,563.8	Formula - special education, 3-5 year-olds
Summer Bridges	22,238.1	16,894.4	76.0%	613.0	Grants to districts (based on ISAT reading scores)
Truant/Dropout/Optional Education	20,078.1	16,034.9	79.9%	1,374.0	Competitive - at-risk students/dropout prevention
Technology Literacy	20,000.0	6,658.1	33.3%	1,127.9	Competitive and non-competitive grants to school districts
Alternative Ed/Reg Safe Schools	18,535.5	11,046.9	59.6%	2,796.0	Formula
Driver Education	17,929.6	8,963.1	50.0%	0.0	Reimbursement
Title IV - Safe and Drug Free	15,000.0	4,225.8	28.2%	722.0	Formula
Teachers/Admin. Mentoring	13,378.8	3,349.6	25.0%	635.4	Grants
Parent/Guardian Transportation	11,954.7	11,938.6	99.9%	0.0	Formula based on appropriation level divided by eligible students
Orphanage Tuition	11,600.0	6,365.4	54.9%	0.0	Reimbursement to school districts for children residing in orphanages
Nat'l Board Certification	11,485.0	0.0	0.0%	0.0	Grants
Spec Ed Summer School	11,000.0	10,854.4	98.7%	0.0	Formula - Special ed students enrolled in summer sessions
After School Mentoring	9,700.0	817.1	8.4%	0.0	Grants
ROE Salaries	9,100.0	6,002.9	66.0%	753.5	Salaries for ROE's
Title II Math/Science Partnerships	9,000.0	1,674.1	18.6%	135.6	Formula
Class Size Reduction Pilot	8,000.0	3,592.5	44.9%	576.5	Grants for K-3
Title V - Innovative Programs	8,000.0	86.9	1.1%	1.0	Formula
Reorganization Incentive	7,850.0	5,475.3	69.7%	0.0	Grants to districts to encourage reorganization through consolidation/annexation
Fast Growth Grants	7,500.0	7,500.0	100.0%	0.0	Grants
Gifted Education	7,000.0	0.0	0.0%	0.0	Grants
ROE School Services	6,318.0	5,261.4	83.3%	769.7	Formula - ROE Operations
Charter Schools - Federal	6,000.0	249.2	4.2%	16.5	Competitive
Voc Ed - Federal Tech Prep	5,000.0	2,851.3	57.0%	785.1	Grants - assists students in achieving learning/occupational skills standards
School Tech. Rev. Loan	5,000.0	1,048.0	21.0%	1,035.1	Loans to schools to implement technology
Spec. Congressional Initiatives	4,865.5	34.7	0.7%	0.0	Grants
Rural Tech Initiatives	4,000.0	0.0	0.0%	0.0	Grants
Targeted Interventions	4,000.0	1,386.2	34.7%	0.0	Grants
Re-Enrolling Student Program	4,000.0	2,760.0	0.0%	0.0	Grant to Alternative Schools Network
Jobs for IL Graduates	4,000.0	3,000.0	75.0%	333.3	Grants to formula reimbursement, work-based learning, jobs for IL graduates
Arts & Foreign Language	4,000.0	1,459.0	36.5%	324.8	Grants
Philip Rock Center	3,577.8	2,627.8	73.4%	300.3	Targeted Initiative

	<u>Funded Amount</u>	<u>Expended Year to Date</u>	<u>% Spent Year to Date</u>	<u>February Expenditures</u>	<u>Description</u>
State Charter Schools	3,421.5	1,711.7	50.0%	0.0	Grants - Start-up funds
Agriculture Education	3,381.2	2,533.1	74.9%	198.2	Grants to school districts
McKinney Homeless Ed	3,250.0	1,867.4	57.5%	179.2	Competitive grants to school districts
Standards Assessment & Acct	3,042.7	1,661.0	54.6%	120.0	Grants for K-6 Arts, Learn Improve, Learning Standards, Student/Teacher Assessment
Grow Your Own Teachers	3,031.8	1,585.9	52.3%	346.8	Grants
Hard to Staff Schools	3,000.0	0.0	0.0%	0.0	Grants
Homeless Education State	3,000.0	0.0	0.0%	0.0	Grants
Healthy Kids/Minds/Exp Vision	3,000.0	1,500.0	50.0%	0.0	Grants
Technology for Success -State	2,719.7	1,994.2	73.3%	643.1	Grants
Learn & Serve America	2,500.0	376.8	15.1%	39.2	Competitive grants
IDEA Part D	2,500.0	855.2	34.2%	43.4	Reimbursement
Children's Mental Health Partner	2,496.8	821.5	32.9%	335.8	Grants
Mat'ls for the Visually Impaired	2,121.0	1,525.0	71.9%	150.0	Targeted Init. - with The Chicago Lighthouse for People who are Blind or Visually Impaired
Classroom Cubed	2,000.0	869.5	43.5%	0.0	Grant to Rock Island Milan School Dist 41.
Response to Intervention	2,000.0	0.0	0.0%	0.0	Grants
Refugee Children	2,000.0	0.0	0.0%	0.0	Grants
Advanced Placement Fee	2,000.0	489.9	24.5%	0.0	Fee reimbursement for Adv Placement Exam and Int'l Baccalaureate exam
Advanced Placement Classes	1,635.3	1,136.3	69.5%	146.9	Grants
Title VI-Flex. & Acct Rural Education	1,500.0	334.1	22.3%	16.9	Grants to school districts
Temporary Relocation	1,400.0	255.1	18.2%	0.0	Formula grants for school emergency relocation
Recording - Blind and Dyslexic	1,218.8	1,018.0	83.5%	0.0	Grant to increase achievement of students with visual impairments
School Transportation	1,200.0	763.6	63.6%	0.0	Grants
Principal Mentoring Prgm Grants	1,082.6	0.0	0.0%	0.0	Grants
Chicago Prin. & Admin Assoc.	1,000.0	0.0	0.0%	0.0	Grant to the Chicago Principals and Administrators Assoc.
Healthy Kids/Minds/Vision Cicero/Berwyn	1,000.0	0.0	0.0%	0.0	Grants
Emergency Financial Assistance	1,000.0	0.0	0.0%	0.0	Formula and loans to school districts
Transition to Teaching	1,000.0	386.2	38.6%	0.0	Grant to Illinois Resource Center
Aerospace Ed Initiative	920.0	758.0	82.4%	0.0	Grant to Chicago Aerospace States Association
ONPAR	800.0	129.7	16.2%	0.0	Grant
Illinois Breakfast Incentive	723.5	147.7	20.4%	8.9	Reimbursement and grant to public and private schools and child-care institutions
Minority Transition	578.8	356.8	61.6%	0.0	Grants - serves disadvantage students from selected Chicago HS and elem. schools
Regional Supt. Initiatives	500.0	316.7	63.3%	0.0	Targeted Initiatives - to St. Clair & Madison ROE's
After School Matters	500.0	0.0	0.0%	0.0	Grant to After School Matters
Teach America	450.0	0.0	0.0%	0.0	Grant for Teach for America
Deaf/Blind	450.0	182.0	40.4%	14.5	Grant to Philip J. Rock Center
IDEA Model Outreach	400.0	0.0	0.0%	0.0	Competitive
IL Economic Education	250.0	0.0	0.0%	0.0	Grant to IL Council on Economic Education
Tax Equivalent Grants	222.6	222.6	100.0%	0.0	Grant to Chaney-Monge School District
Metro East Consortium	217.1	130.3	60.0%	0.0	Grant to provide staff development to increase student achievement in MECCA
Adler Planetarium	200.0	0.0	0.0%	0.0	Grants
Museum of Science & Industry	200.0	0.0	0.0%	0.0	Grant
IL Teach Excellence-Teach of year	135.0	38.6	28.6%	0.0	Grants for Teacher of the Year
IL Gov't Internship	129.9	75.0	57.7%	0.0	Targeted Initiative - Springfield School Dist. 186
Supervisory Expense	102.0	102.0	100.0%	0.0	Supervisory Expense
Parental Participation Pilot	100.0	73.8	73.8%	0.0	Grants
Autism Training & Tech Assist.	100.0	66.7	66.7%	0.0	Grants to the IL Autism Training & Tech Assistance Program
ROE Bus Driver Training	70.0	70.0	100.0%	0.0	ROE Bus Driver Training
Mental Health - Federal	25.8	25.8	100.0%	0.0	Grant
Charter Schools-Rev Loan Fund	20.0	0.0	0.0%	0.0	Other/Repayment of loans

**ILLINOIS STATE BOARD OF EDUCATION
HEADCOUNT AS OF FEBRUARY 2009**



*Headcount revised in April of FY07 and Oct. and Feb. of FY08

**ILLINOIS STATE BOARD OF EDUCATION
AGENCY STAFF DETAIL AS OF FEBRUARY 2009**

	Mgmt.	Prof.	Support	GRF	Non-GRF	Total
SUPERINTENDENT'S OFFICE						
State Superintendent	1	0	3	4	0	4
Board Services	0	1	1	2	0	2
General Counsel	2	10	2	14	0	14
Governmental Relations	0	2	0	1	1	2
Internal Audit	<u>1</u>	<u>2</u>	<u>1</u>	<u>2</u>	<u>2</u>	<u>4</u>
Sub-Total	4	15	7	23	3	26
HUMAN RESOURCES						
Human Resources	<u>4</u>	<u>3</u>	<u>7</u>	<u>12</u>	<u>2</u>	<u>14</u>
Sub-Total	4	3	7	12	2	14
PUBLIC INFORMATION						
Public Information	<u>1</u>	<u>6</u>	<u>1</u>	<u>7</u>	<u>1</u>	<u>8</u>
Sub-Total	1	6	1	7	1	8
SPECIAL EDUCATION SERVICES						
Special Education Admin.	1	0	1	0	2	2
Special Education Services - Spfld.	2	26	6	2	32	34
Special Education Services - Chgo.	<u>2</u>	<u>21</u>	<u>2</u>	<u>0</u>	<u>25</u>	<u>25</u>
Sub-Total	5	47	9	2	59	61
EDUCATIONAL PROGRAMS						
Career & Technical Education	1	8	2	5	6	11
Early Childhood	1	9	2	6	6	12
English Language Learning	1	8	1	3	7	10
Grants and Programs	<u>2</u>	<u>18</u>	<u>2</u>	<u>2</u>	<u>20</u>	<u>22</u>
Sub-Total	5	43	7	16	39	55
STANDARDS & ASSESSMENTS						
Standards & Assessment Admin.	1	1	1	2	1	3
Data Analysis & Progress Reporting	1	8	3	10	2	12
Assessment	2	13	2	5	12	17
Curriculum & Instruction	<u>2</u>	<u>14</u>	<u>3</u>	<u>8</u>	<u>11</u>	<u>19</u>
	6	36	9	25	26	51

	Mgmt.	Prof.	Support	GRF	Non-GRF	Total
SCHOOL SUPPORT SERVICES FOR ALL SCHOOLS						
School Support Admin	1	0	1	2	0	2
Educator Certification	1	9	12	9	13	22
Educator & School Development	2	18	9	18	11	29
Nutrition Programs	<u>2</u>	<u>36</u>	<u>6</u>	<u>3</u>	<u>41</u>	<u>44</u>
	6	63	28	32	65	97
FISCAL SUPPORT SERVICES						
Fiscal Support Services Admin.	1	0	0	1	0	1
Budget & Financial Management	0	7	1	7	1	8
Data Systems	3	29	2	20	14	34
Technology Support	1	18	3	15	7	22
Fiscal & Procurement	2	12	6	12	8	20
Administrative Services	2	3	13	13	5	18
Funding and Disbursements	2	20	10	16	16	32
School Business Services	1	13	2	15	1	16
External Assurance	<u>2</u>	<u>18</u>	<u>2</u>	<u>7</u>	<u>15</u>	<u>22</u>
Sub-Total	14	120	39	106	67	173
GRAND TOTAL, ALL CENTERS	45	333	107	223	262	485
	9%	69%	22%	46%	54%	100%

**ILLINOIS STATE BOARD OF EDUCATION
Personnel Transactions As of February 2009**

Transaction Data:

	<u>FY01</u>	<u>FY02</u>	<u>FY03</u>	<u>FY04</u>	<u>FY05</u>	<u>FY06</u>	<u>FY07</u>	<u>FY08</u>	<u>FY09</u>
Begin Year	787	739	650	522	471	487	478	463	475
Hire Externally	27	5	29	20	77	37	44	54	26
Recall	0	0	11	19	4	4	0	1	1
Retire	-35	-37	-128	-34	-30	-25	-20	-19	-6
Resign	-35	-21	-13	-24	-31	-17	-33	-19	-8
Discharge	-2	-9	-2	-2	-4	-7	-5	-4	-2
Layoff	0	-25	-22	-30	0	0	0	0	0
Death	-3	-2	-3	0	0	-1	-1	0	0
Other	<u>0</u>	<u>0</u>	<u>0</u>	<u>0</u>	<u>0</u>	<u>0</u>	<u>0</u>	<u>-1</u>	<u>-1</u>
End Year	739	650	522	471	487	478	463	475	485