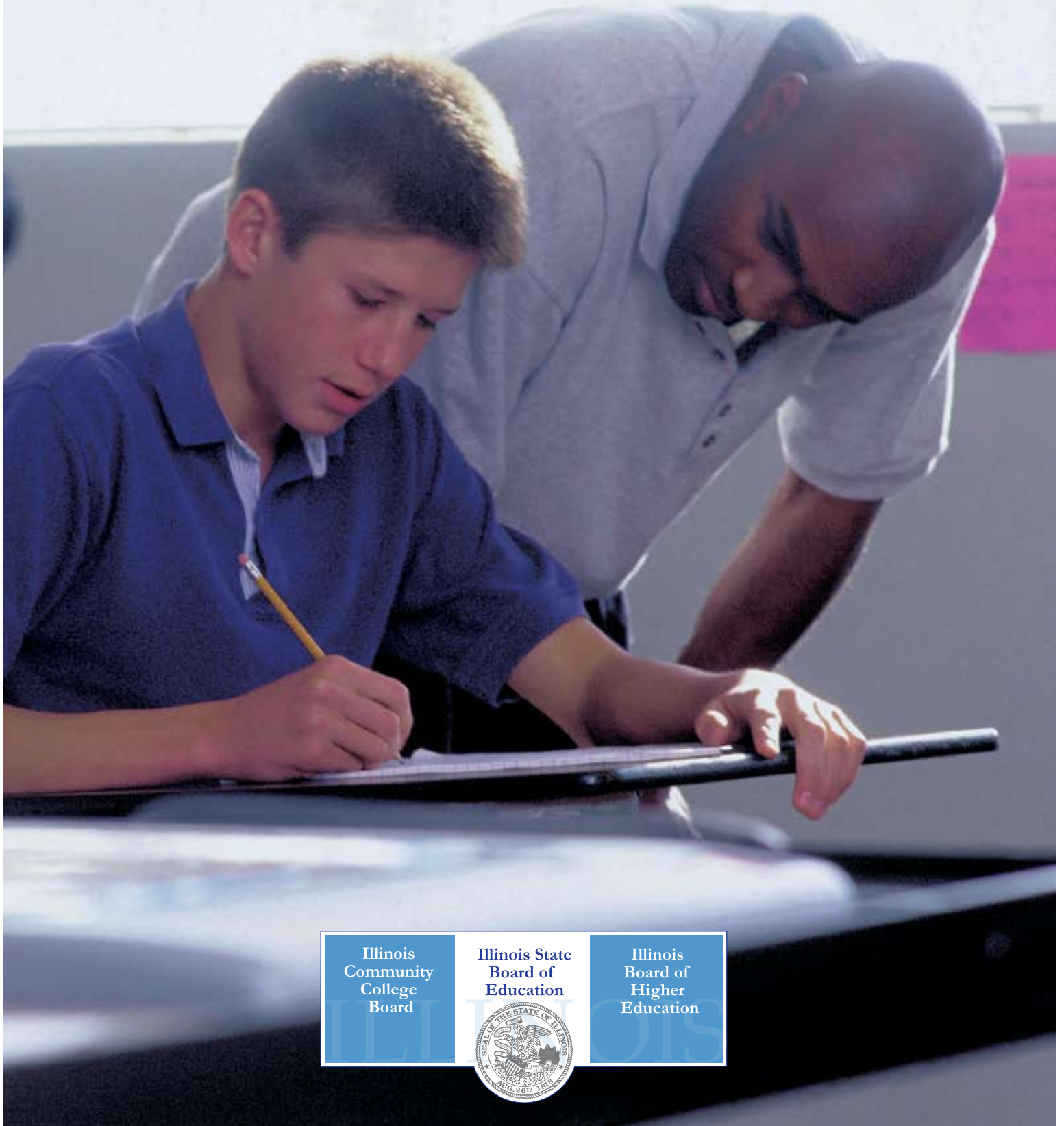


The Illinois High School to College Success Report: Overview of the 2007–08 Pilot Report



Illinois
Community
College
Board

Illinois State
Board of
Education

Illinois
Board of
Higher
Education



BACKGROUND INFORMATION

Each year, more than 65,000 Illinois public high school graduates enroll full-time for the first time in the 48 public community colleges and 11 public four-year colleges and universities in Illinois. Accurate and comprehensive data on the academic progress of these students during their first year in higher education provides educators and policymakers with important information. Such information can be used to engage in collaborative discussions and decisions to support secondary and postsecondary institutions in developing an articulated and aligned curriculum to ensure success for all students.

For the past 18 years, Illinois has released a high school feedback report; thus far, only the 11 four-year public colleges and universities have collected and reported data centrally through this tool. The October 2007 adoption of Senate Joint Resolution

59 (SJR59), relating to Students' College Readiness, expands the participation of postsecondary institutions. As a result, the Illinois State Board of Education (ISBE), Illinois Board of Higher Education (IBHE), and Illinois Community College Board (ICCB) have developed a pilot Illinois High School to College Success Report. This pilot report will present data from the 2007–08 school year and will include information from the 48 community colleges as well as the 11 four-year institutions.

The pilot Illinois High School to College Success Report will be released in early spring 2009. A major purpose of the pilot report is to facilitate improved student achievement. It is hoped that this goal will be achieved through fostering collaboration between K–12 and postsecondary educators and policymakers to ensure that students have rigorous and relevant continual learning.

DETAILS OF THE PILOT REPORT

The pilot 2007–08 Illinois High School to College Success Report package will consist of three separate reports:

- **Individual High School Reports.** These reports will provide school-level information on how graduates from individual high schools performed during their freshman year at Illinois postsecondary institutions.
- **State Aggregate High School Report.** This report will aggregate the data from the Individual High School Reports into a single state report.
- **Individual Postsecondary Reports.** This new report for Illinois colleges and universities will provide information on freshman students and the high schools from which they graduated.

The charts and tables in the pilot Illinois High School to College Success Report will describe performance indicators for Prairie State Achievement Examination (PSAE)–tested high school graduates who attended a public two-year or four-year postsecondary institution in Illinois during the 2007–08 school year.



The pilot report will provide a snapshot of data and information to support conversations about the following:

- A statewide comparison of college grade point averages (GPAs) for the fall 2007 semester
- The alignment of freshman student performance to the ACT College Readiness Benchmark Scores
- The relationship between rigorous mathematics and science preparation in high school and student success during the first year of college
- ACT composite scores and statewide enrollment by college
- The percentage of high school graduates who completed college-preparatory (core) coursework and the relationship to their first-year experience in college
- The relationship between ACT scores, participation in developmental coursework, and college GPAs for fall 2007
- College persistence and retention rates

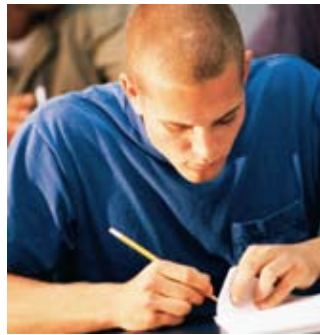
Another noteworthy piece of the pilot Illinois High School to College Success Report is its emphasis on data-driven decision making. The pilot report not only will engage secondary and postsecondary stakeholders but also will use multiple data sources to facilitate informed, collaborative decision making.

ACCESS

ISBE, IBHE, and ICCB will disseminate the pilot report to the participating secondary and postsecondary institutions and also will provide access to the report through their respective websites. In addition, the Illinois Interactive Report Card (IIRC) will include Individual High School Reports that can be accessed directly through the IIRC website.

The pilot Illinois High School to College Success Report will be used as a tool to build and strengthen collaborative efforts between secondary and postsecondary educators, parents and community residents, and policymakers to increase student achievement:

- **Educators** will have additional information to review curriculum, standards, and expectations and to make revisions when appropriate to improve student success.
- **Parents and community residents** will have information on college and career readiness to support conversations with secondary and postsecondary institutions and groups.
- **Policymakers** will have additional data to make policy decisions to support the collaboration between secondary and postsecondary institutions as well as the alignment between secondary and postsecondary standards and expectations.



INTENDED USE

The following chart indicates the parameters of the pilot report:

What the pilot Illinois High School to College Success Report <i>will</i> do:	What the pilot Illinois High School to College Success Report <i>will not</i> do:
<ul style="list-style-type: none"> • It will provide information about freshman students attending public universities and community colleges in Illinois. 	<ul style="list-style-type: none"> • It will not represent 100 percent of Illinois high school graduates. • It will not include information about students attending private or proprietary institutions of higher education within Illinois. • It will not include information about students attending institutions of higher education outside the state.
<ul style="list-style-type: none"> • It will provide a snapshot of data and information to support conversations about secondary and postsecondary collaboration. 	<ul style="list-style-type: none"> • It will not represent the performance of individual high schools or students.
<ul style="list-style-type: none"> • It will facilitate conversations between secondary and postsecondary educators and policymakers. 	<ul style="list-style-type: none"> • It will not allow readers to draw conclusions about the performance of individual high schools and/or postsecondary institutions.

FORMATIVE EVALUATION

An essential element of the 2007–08 pilot Illinois High School to College Success Report is the formative evaluation process, which serves to facilitate its use as an exemplary feedback instrument. Through the pilot year, evaluation data assessing the institutional use, dissemination timeline, data included, and access to professional development will be collected and reviewed for modification or expansion.

FREQUENTLY ASKED QUESTIONS

1. Is this the first time that information on the freshman-year college performance of Illinois high school graduates has been available?

Since 1990, Illinois has produced a report on the performance of high school graduates. The redesigned report, however is different in several ways:

- For the first time, the information included in the report will be provided to the public postsecondary institutions in Illinois, ISBE, IBHE, ICCB, and high schools. (The previous reports, in contrast, were sent only to the principals of Illinois high schools.)
- The 2007–08 report also will include, for the first time, information on student achievement at all Illinois public community colleges and four-year institutions that admit freshmen. (The previous reports, in contrast, provided information from only the 11 public four-year institutions receiving freshmen.)

2. Will information from private colleges and universities in Illinois be included in the report?

The 2007–08 pilot report will include information only from Illinois public community colleges and four-year institutions accepting freshmen. In the future, however, private colleges and universities in Illinois will be encouraged to contribute data to the report.

3. When and how will the report be disseminated?

The report will be distributed in early spring 2009 to the secondary and postsecondary institutions with a joint cover letter from ISBE, IBHE, and ICCB. The information also will be available on the ISBE, IBHE, and ICCB websites. The Illinois Interactive Report Card (IIRC) will post individual high school reports that can be accessed directly through the IIRC website or through a link from the ISBE website.

WEBSITES

Illinois State Board of Education
www.isbe.net

Illinois Board of Higher Education
www.ibhe.state.il.us

Illinois Community College Board
www.iccb.org

Illinois Interactive Report Card
iirc.niu.edu



3100_09/08