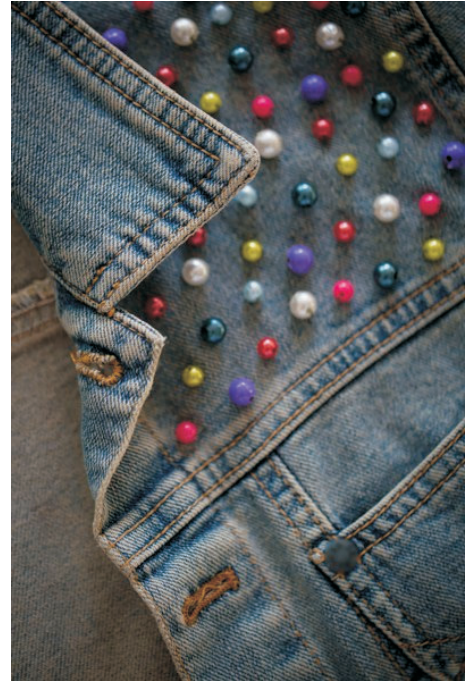


# Trims and Fasteners

**T**RIMS are an ornament applied to a garment that adds color and decoration. Ultimately, trims change the look of a garment or outfit. Select trims based on the fashion look you are trying to achieve and/or the functionality of the garment. Fasteners close garments and help create the “fit.” In some cases, fasteners add to the decorative design aesthetic. This jean jacket has been embellished with bead trim. What trim would you have selected?



## Objective:



Select and apply appropriate trims to specific garments.

## Key Terms:



appliqué	fringe	ribbon
beading needle	hook and bar	sequins
beads	hook and eye	snaps
bias tape	hook and loop	template
braid	lace	trims
chainstitch	miter	VELCRO®
fasteners	pipng	

## Understanding Trims and Fasteners

Trims and fasteners vary, depending on the garment being created and its purpose.

### TRIMS AND TRIM TYPES

**Trims** are ornaments applied to a garment. They are available in a variety of types, sizes, and shapes. It is recommended that all trims be laundered prior to attachment to a garment and laundered in the same fashion as the item to which it will be applied. Trims are used on a gar-

ment to add color, to add a decorative element, and/or to change the look of a garment or an outfit.

## Types of Trim

The proper trim depends on various factors, such as garment purpose.

### Bias Tape

**Bias tape** is a narrow strip of fabric cut across the diagonal line of a woven fabric: the true bias. Bias tape is available in single or double-fold varieties. It is used as a binding and is stitched on curved or straight edges, used as a casing, or for ties.

### Ribbon

**Ribbon** is a thin band of flexible material finished at the edges and used for binding, tying, and decorative purposes. It is found in a variety of sizes, shapes, and colors. Ribbon is used for trimming and as embellishment for a garment or other objects. The stitching used to attach the ribbon depends on the type chosen.

### Lace

**Lace** is a delicate fabric made of yarn or thread in an open web-like pattern. Lace trim is available in a variety of sizes, shapes, and patterns. It adds elegance to a garment.

### Beads

**Beads** are small decorative objects formed in various shapes and sizes; most are pierced for threading or stringing. Beads are made of a variety of materials (e.g., glass, plastic, wood, and pearl). A beading needle is recommended when attaching beads to a garment. A **beading needle** is a long, thin, flexible needle with a much smaller thread hole than a regular sewing needle.



**FIGURE 1.** What type of trim is used on this dress? How does the trim change the way the dress appears?



**FIGURE 2.** In this photo, lace has been used to update a pair of jean shorts. Do you think the lace was added for decorative purposes? Was it added to cover a flaw on the garment? What is your opinion of the “look” of adding the lace? How could you use lace to update other garments?

To attach beads, stitch up through the fabric and string a bead onto the thread, or go back down through the fabric just beside the bead. Bring the needle back up close to the edge of the bead. String a new bead, and repeat the process.

For best results, use a template to transfer a decorative design to the fabric when beading. A **template** is a stencil pattern or overlay used in sewing to replicate letters, shapes, and/or designs.

### Sequins

**Sequins** are disc-shaped beads used for decorative purposes. They add sparkle to a garment. A beading needle is recommended when attaching sequins. When attaching sequins, stitch up through the fabric, and string a sequin onto the thread or back down through the fabric just beside the bead. The needle must be brought back up close to the sequin edge to string a new sequin. Then the process must be repeated. For best results, use a template.

### Appliqué

**Appliqué** is a technique in which fabric or detail pieces are machine-sewn or hand-sewn onto the foundation fabric or garment to add a decorative element. Appliqué fringe is purchased by the yard.

### Braid

**Braid** is a patterned trim formed by interlocking one or more strands of flexible textile or thread. It may be purchased by the yard in a variety of widths at most fabric stores. Narrow braid can be used as a finishing touch to a garment.

- ◆ A flat woven braid may be applied with topstitching on each edge.
- ◆ A novelty braid is hand-sewn with invisible stitches.
- ◆ When pinning braid trim to a garment, gently stretch outer curves and ease inner curves.

### Piping

**Piping** is a narrow, corded bias strip of fabric used for trimming. The piping is generally inserted into a seam for a decorative trim.



**FIGURE 3.** If you add beads to a garment, would the beads have the same fashion statement as adding sequins? Why or why not? What affect do you feel beads and sequins have, and which garments would you use them on? This handbag has beads and sequins. When would this bag be carried?

## Fringe

**Fringe** is an ornamental textile trim applied to the border (edge) of a garment or accessory. It is usually a border of hanging threads, cords, or tassels stitched onto the edge of a garment, handbag, shoes, scarf, etc. Fringe reoccurs in fashion regularly, often with a slightly different twist (styling). The 1920s, 1970s, and now are times when fringe has an impact on fashion.



**FIGURE 4.** Fringe is an ornamental textile trim applied to the border (edge) of a garment or accessory and includes tied and knotted, tassels, and self-fringed fabric: coats, handbags, tops, dresses, skirts, etc. Fringe reoccurs in fashion regularly, often with a slight twist.

- ◆ Self-fringe is created by fraying the fabric edges.
- ◆ Most fringe trim is sewn to the garment using the flat edge method of application.

## TRIM APPLICATION METHODS

The method of applying trim depends on the garment type; the type of trim being used; and the location of the trim on the garment. Three main methods for applying trim are flat, edge, and insertion.

### Flat Method

The flat method is used with trim finished on both edges. You would use the following basic application sequence to use the flat method:

- ◆ STEP 1: Mark the placement line for the trim.
- ◆ STEP 2: Pin the edge of the trim to the placement line.
- ◆ STEP 3: Stitch along one edge, both edges, or through the center.
- ◆ STEP 4: Miter the corners. A **miter** is a corner joint formed by beveling the two parts to be joined; this is usually done at a 45-degree angle. A mitered corner is a more professional finish that results in a sharp corner with no bulk.

### Edge Method

The edge method is used on trim that has one finished side. Use the following basic application sequence to use the edge method:

- ◆ STEP 1: Pin the trim along the edge or seam line with right sides together; ensure the trim is lapped toward the garment.

- ◆ STEP 2: Stitch close to the trim edge.
- ◆ STEP 3: Turn the seam allowance to the inside, and topstitch to finish the edge.

### Insertion Method

The insertion method is used on straight sections of a garment. This method is not recommended for use on curved areas. Use flat trims only with this method. You might add this trim to the front of a shirt or at the bottom of any skirt or jacket. Use the following basic application sequence to apply (insert) a flat trim.

- ◆ STEP 1: Cut the fabric along the placement line.
- ◆ STEP 2: Turn the fabric under half the width of the trim on both fabric edges.
- ◆ STEP 3: Pin the flat trim under the folded edges of the fabric.
- ◆ STEP 4: Stitch through all layers of the fabric and trim.

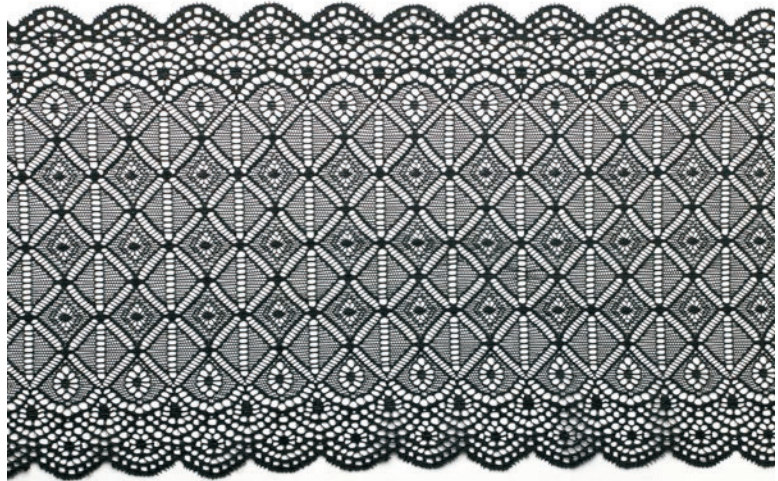


FIGURE 5. This is a picture of flat lace. Describe how you would insert this lace on a shirt or blouse. Where would you position the lace insert? Why?

## FASTENER APPLICATIONS

**Fasteners** are devices that hold two objects or parts together that are at times required to be separate, such as two pieces of a garment. Fastenings help create the “fit” of the garment and often add to its decorative design aesthetic. Numerous fastener types are used in clothing construction, including:

- ◆ Belts, sashes, braces (suspenders), and cummerbunds
- ◆ Buttons (including Chinese ball buttons made from bias fabric strips)
- ◆ Eyelets
- ◆ Grommets
- ◆ Hooks (hook and bar, hook and eye, hook and loop, and VELCRO®)
- ◆ Laces
- ◆ Snaps
- ◆ Toggles
- ◆ Zippers

## Hook and Eye

**Hook and eye** is a fastener consisting of a metal hook commonly made of thin flattened wire. This wire is bent to the required shape, and an eye is made of the same material. A hook is used in combination with a variety of partners, depending on the garment in use. Hooks will either be round to use when garment edges meet or straight when there is an overlap on garment edges. Hook and eye combinations can be found in a variety of sizes. Small hook and eye combinations are used at necklines. An eye made of **chainstitch** (a series of looped threads in a chain-like manner) can be used in garments where you want less visibility than a metal or plastic eye. Use the following basic application sequence to apply a hook and eye fastener:

- ◆ STEP 1: Place the hook  $\frac{1}{8}$  inch from the edge of the garment.
- ◆ STEP 2: Stitch each loop with an overcast stitch. Stitch only through the facing.
- ◆ STEP 3: Take three or four stitches across the end of the hook to hold it flat.
- ◆ STEP 4: Secure the threads.
- ◆ STEP 5: Attach the eye by exactly “matching up” the garment edges.
- ◆ STEP 6: Place the eye so the loop extends  $\frac{1}{8}$  inch beyond the edge.
- ◆ STEP 7: Ensure the garment edges match up exactly when the hook and eye is attached.
- ◆ STEP 8: Stitch around each loop, and secure the eye.

## Hook and Bar

**Hook and bar** is a fastener that substitutes a bar for the eye to add more security to the clasp. A bar is combined with a hook for heavy-duty security. This type is usually found in the waistband of trousers and skirts. You would use the same application sequence as for a hook and eye.

## Hook and Loop

**Hook and loop** is a fastening device consisting of two fabric strips attached to opposing surfaces to hold them together. One strip consists of tiny hooks, and the other strip consists of even smaller loops. When you press the two together, the strips bind (interlock). This fastener is easily released when you pull the two strips apart. You can buy hook and loop fasteners in circles, squares, and strips.



## FURTHER EXPLORATION...

### ONLINE CONNECTION: Decorating with Trims

Go online to some of your favorite shopping sites. Pick out five outfits that you would like to purchase. You need to select entire outfits: jewelry, dress, top or pants, shoes, purse, hat or scarf, and jewelry. Two of the items in each of your outfits must have some type of trim. Label the trim found on each outfit. Summarize why you like each outfit. Make sure your summary includes how the trim affects the appeal of the outfit.

**VELCRO®** (abbreviation for Velour Crochet; a French phrase) is the most easily recognized type of hook and loop fastener. One side of the tape has tiny hooks, and the other side is looped pile. This type of fastener is often found in sportswear, children's clothing, crafts, and home furnishings. Use the following basic application sequence to apply hook and loop fastenings:



**FIGURE 6.** This waterproof kayaking jacket has double closure (fastening) devices: a zipper and VELCRO®. VELCRO® (abbreviation for Velour Crochet; a French phrase) is a type of hook and loop fastener.

- ◆ STEP 1: First, cut the strips of the hook and loop to the correct length.
- ◆ STEP 2: Next, place the loop half on the underside of the overlapping edge of the garment.
- ◆ STEP 3: Then place the hook half exactly underneath on the underlap edge of the garment.
- ◆ STEP 4: Machine stitch both of the tapes in place.

## Snaps

**Snaps** are metal or plastic fasteners made of interlocking discs. The disc is made of two parts: the ball (found on the overlap) and the socket (found on the underlap). When attaching a snap, sew the ball half to the overlap and the socket half to the underlap. Use the following basic sequence to apply a snap:

- ◆ STEP 1: Center the ball of the snap over the marking for the snap.
- ◆ STEP 2: Position the ball at least  $\frac{1}{8}$  inch from the edge.
- ◆ STEP 3: Sew three or four stitches through each hole. Stitch only through the fabric.
- ◆ STEP 4: Mark the position for the socket half of the snap.
- ◆ STEP 5: Overlap the edges, and push a pin through the ball and into the underlap. Place the socket half over the marking.
- ◆ STEP 6: Place a pin through the socket to hold it in place.
- ◆ STEP 7: Stitch in place.

## Summary:



Trims need to be compatible with the fabric and garment to which they are sewn. Trims are usually attached in one of three methods: flat, edge, or insertion method. You can give an older garment a “new look” by adding trims.

Fasteners come in a variety of options. Hook and eye and hook and bar are two types of fasteners used on dresses, pants, and skirts. A thread chain can be used in place of the eye on more delicate fabrics and areas of less stress. In addition, VELCRO® is a common name for a hook and loop fastener.

## Checking Your Knowledge:



1. Why is the inserted method of trim application recommended for use on straight areas of a garment?
2. For a hook and eye fastening, when would you choose to use a round eye rather than a straight eye?
3. Describe a beading needle. When is it used?
4. Where could you find a template to use in decorating a garment?
5. What is the difference between a sequin and a bead?

## Expanding Your Knowledge:



Chose one of the trims identified in the material covered. Research the history of this trim. When did this trim start to be seen on clothing? What centuries or decades did we find this trim to be most prevalent in society? Find some pictures of the use of this trim. On a piece of poster board, make a timeline of its use in fashion. Use historical pictures of garments decorated with the trim for your timeline. Type up a history of what you found on this trim, and attach it to the bottom of the poster board below your timeline.

## Web Links:



### How to Attach Hooks, Eyes, and Snaps Video

<http://www.threadsmagazine.com/item/23267/how-to-attach-hooks-eyes-snap>

### How to Make a Mitered Edge

<http://www.everythingsewing.net/miterededge.htm>

### Using Ribbon

<http://www.marthastewart.com/914742/good-thing-using-ribbon-decorate-clothing#914742>

### Trim Applications

<http://historicalsewing.com/when-is-trim-applied-to-a-garment>