

ISBE School Nutrition Programs Update

Wednesday, March 5, 2025

On the Calendar



- **March:** National Noodle Month, Recipe Highlight: [Chicken or Turkey Noodles](#)
- **March 3-7:** [National School Breakfast Week](#)
- **March 5:** [ISBE SNP Update webinar](#)
- **March 6:** [Culinary Institute of Child Nutrition webinar](#)
- **March 10:** Deadline to Complete the 2024-25 SFA Survey on Supply Chain Disruption and Student Participation
- **March 10:** [Submit claims in WINS](#)
- **March 20:** [Serve It Up Safely Food Handler Training](#)
- **March 26:** National Spinach Day, Recipe Highlight: [Creamed Spinach](#)
- **March 27:** [ISBE Webinar on Applying for CEP](#)
- **March 31:** [Annual Sanitation Reviews](#)

On the Calendar



- **April 2:** [ISBE SNP Update webinar](#)
- **April 4:** International Carrot Day, Recipe Highlight: [Orange Glazed Carrots](#)
- **April 7-9:** [ISBE School Wellness Conference](#)
- **April 10:** [Submit claims in WINS](#)
- **April 30:** National Raisin Day, Recipe Highlight: [Carrot Raisin Salad](#)
- **May:** National Salad Month, Recipe Highlight: [Asian-Inspired Chop Salad With Ginger Sunbutter Dressing](#)
- **May 2:** [School Lunch Hero Day](#)
- **May 7:** [ISBE SNP Update webinar](#)
- **May 10:** [Submit claims in WINS](#)

March 31 Reminder



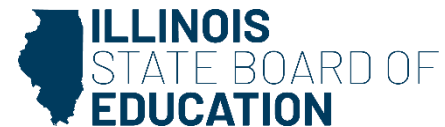
Local Health Department Reviews

- Each school year, SFAs must obtain two food sanitation inspections for each site where food is prepared or served.
- If an SFA has not received the food sanitation inspections by March 31, a letter must be written to the local health department requesting the required two food sanitation inspections.
- [School Nutrition Programs Administrative Handbook, Section L: Reviews](#) (Page L-2)

National School Breakfast Week

- **March 3-7**
- [School Nutrition Association Resources](#)
- [USDA Team Nutrition Resources](#)

cnp@isbe.net



What's New? www.isbe.net/nutrition

ISBE School Nutrition Programs Updates

- 2-3 p.m. Wednesday, April 2
- 2-3 p.m. Wednesday, May 7
- Register online:



<https://register.gotowebinar.com/rt/5845845379050237016>

- Recordings and PDFs of the slides Available on the [SNP Training and Professional Standards webpage](#)

USDA Surveys

2024-25 SFA Survey on Supply Chain Disruption and Student Participation

- Survey emailed to SFAs on Jan. 27 from noreply@qemailserver.com
- Conducted by Decision Information Resources Inc. (DIR), sponsored by USDA FNS
- Questions? Call (844) 632-9010 or email SFASupplyChainSurvey@dir-online.com

What's New?

Get The Outlook

- Latest issue posted at www.isbe.net/nutrition
- Keep your WINS contacts up-to-date
- Subscribe at www.isbe.net/subscribe



What's New?



ISBE School Wellness Conference

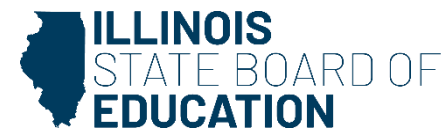
- **WHEN:** April 7-9
- **WHERE:** Bloomington-Normal Marriott Hotel & Conference Center
- **WHO:** School nutrition professionals, school nurses, counselors, administrators and more
- [Register today online!](https://www.isbe.net/Pages/School-Wellness-Conference.aspx)

What's New? <https://schoolnutrition.extension.illinois.edu/>



Illinois Extension
UNIVERSITY OF ILLINOIS URBANA-CHAMPAIGN

- **Serve It Safely Food Handler Training**
 - 2:30-5 p.m. March 20
- **Online Training available include:**
 - Academic Success: What Do Diet and Physical Activity Have to Do With it?
 - Building Flavor Stations
 - Promoting School Meals



What's New?



CICN Webinar Series

"A Roadmap for Success: Competencies, Knowledge, and Skills for Chefs in Schools"

- 2-3 p.m. March 6
- [Click here to register](#) or go to What's New? at www.isbe.net/nutrition
- Additional resources: <https://theicn.org/>

What's New?



[Submit your story today! Click here to get started.](#)

What's New?



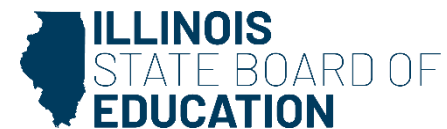
HMI Recognition Awards

- **Healthy Meals Incentives Recognition Awards**

<https://healthymealsincentives.org/recognition-awards/>

Award Categories

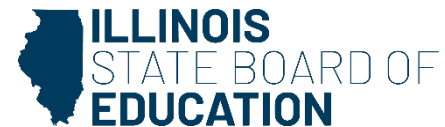
- Breakfast Trailblazer
- Small and/or Rural SFA Breakfast Trailblazer
- Lunch Trailblazer
- Small and/or Rural SFA Lunch Trailblazer
- Innovative School Lunch Makeover
- Innovation in the Cultural Diversity of School Meals
- Innovation in the Preparation of School Meals
- Innovation in Nutrition Education



Community Eligibility Provision (CEP) Basics

Illinois State Board of Education
Nutrition Department
March 2025

Roxanne Ramage, MS, RDN, SNS
rramage@isbe.net



What is CEP?

- CEP is an USDA approved alternative to collecting, approving, and verifying household eligibility applications for free and reduced price eligible students in high poverty local educational agencies (LEAs) for schools participating in the National School Lunch and School Breakfast Programs.
- CEP is a 4-year reimbursement option for schools operating both the National School Lunch and School Breakfast Programs.
- CEP schools use an approved percentage for meal claiming purposes. This approved percentage is determined based on the number of Identified Students enrolled in the school.
- An LEA may participate in CEP for some or all schools in the LEA.

CEP Benefits

- **Students**

- Breakfast and Lunch Offered Daily to ALL Students
- No Reimbursable Meal Charges
- Meals are Healthy and Nutritious
- Ensures Students are 'Ready to Learn'
- No Overt Identification

- **Parents**

- Simplification of Meal Benefit Paperwork
- No cash payment for meals

- **Schools**

- Reduced School Nutrition Program Paperwork
- Streamlines Meal Service
- Eases implementation of Alternative Breakfast Models



CEP Eligibility Basics

- Have a minimum level (25%) '*Identified Students*' as of April 1 in the year prior to implementing CEP;
- Agree to serve **free lunches AND breakfasts** to all students for up to four consecutive years;
- Agree to cover with non-Federal funds any costs of providing meals at no cost to all students above amounts provided in Federal assistance;
- **NOT** collect free and reduced price household eligibility applications from households in participating schools during the period of participation in the CEP;
(PUBLIC schools in Illinois will still need student socioeconomic data for SIS)
- Count total breakfasts and lunches served to students; and
- NOT be a residential child care institution (RCCI) as that term is set forth in the definition of "School" in 7 CFR 210.2.

Who are Enrolled Students?

- Enrolled students are students enrolled in the school applying for CEP that have access to at least one meal service at the school.
- Students who do not have access to either breakfast or lunch, or students tuitioned to other schools are NOT counted in the student enrollment numbers.
- Enrolled Pre-school students may be included if they are offered at least one meal service. (breakfast or lunch under SNP)



Who are Identified Students?

- Identified Students are:
 - Directly certified for free meals on the basis of their participation in the Supplemental Nutrition Assistance Program (SNAP), Temporary Assistance for Needy Families (TANF), income eligible FREE Medicaid, foster children and the extension of benefits to students within the same household.
 - Homeless
 - Certified by homeless coordinator listing
 - Runaway
 - Certified by runaway coordinator listing
 - Migrant Youth
 - Certified by the migrant coordinator listing
 - Head Start
 - Certified by the Head Start coordinator listing

Please NOTE: DC Medicaid REDUCED do NOT count as an Identified Student for CEP purposes.



CEP Evaluation Worksheet

- To assist schools in evaluating the CEP versus Traditional Method, we have developed worksheets that are available.
- The worksheet can be used to determine if CEP or traditional participation in the meal programs will provide a greater amount of reimbursement.
- **Important Note:** The worksheet only shows the difference in reimbursement amounts and does NOT identify any added value and/or savings to the school due to the certification and verification processes no longer required. Also, assumes all revenue from reduced price and paid students is collected.

NUTRITION

COMMUNITY ELIGIBILITY PROVISION (CEP)

CEP is an alternative to collecting, approving, and verifying household eligibility applications for free and reduced price eligible students in high poverty local educational agencies (LEAs) for schools participating in the National School Lunch and School Breakfast Programs.

Application Process



Documents



Evaluation Worksheets



School Year 2024-25 CEP Evaluation Worksheets (Based on SY 2024-25 Rates of Reimbursements)

In order to determine which worksheet to use, the 60% rate refers to the district's National School Lunch Program rate of reimbursement. Those districts claiming 60% or greater F/R lunches two years prior receive the 60% or greater rate of reimbursement.

The Severe Need Breakfast, is higher rate of reimbursement provided to sites that claimed 40% or greater of their lunches as F/R two years prior. This information can be found on your most recent Approval Letter available in WINS under the attachment link (paper clip icon).

- NSLP 60% rate and Non Severe Need Breakfast
- NSLP 60% rate and Severe Need Breakfast
- NSLP less than 60% rate and Non Severe Need Breakfast
- NSLP less than 60% rate and Severe Need Breakfast

<https://www.isbe.net/cep>

Overview of the CEP Identified Student %, the CEP Claiming Percentages, and Average Lunch and Breakfast Reimbursement, based on SY24-25 Rates of Reimbursement, 60% or greater NSLP, Severe Need Breakfast

CEP Identified Student %	FREE Claiming % (* 1.6 USDA factor)	PAID Claiming % (100-Free)	Average LUNCH Reimbursement	Average Breakfast Reimbursement
62.50%	100.00%	0.00%	\$4.58	\$2.88
55.00%	88.00%	12.00%	\$4.09	\$2.58
52.00%	83.20%	16.80%	\$3.90	\$2.46
50.00%	80.00%	20.00%	\$3.77	\$2.38
45.00%	72.00%	28.00%	\$3.45	\$2.18
40.00%	64.00%	36.00%	\$3.12	\$1.98
35.00%	56.00%	44.00%	\$2.80	\$1.78
30.00%	48.00%	52.00%	\$2.47	\$1.59
25.00%	40.00%	60.00%	\$2.15	\$1.39

CEP Timelines

April 1, 20XX: Determine the Number of Identified Students and Enrollment. Maintain proper documentation for both the Identified Students and enrollment.

April 1, 20XX: Complete CEP Application via the online *CEP Evaluation and Application Module*, available in *WINS*.

June 30, 20XX: Deadline to apply to participate in CEP

June 30, 20XX: Deadline to withdrawal from CEP.



Upcoming Webinar

SY 25-26 CEP for Illinois Schools – Overview and Application Process

- March 27, 2025, Thursday
- 9:30 – 11:00 am
- Register:
<https://register.gotowebinar.com/register/9191419574081892438>
- Webinar will be recorded and posted online, if this date and time is not convenient with your schedule.

Food Distribution Program

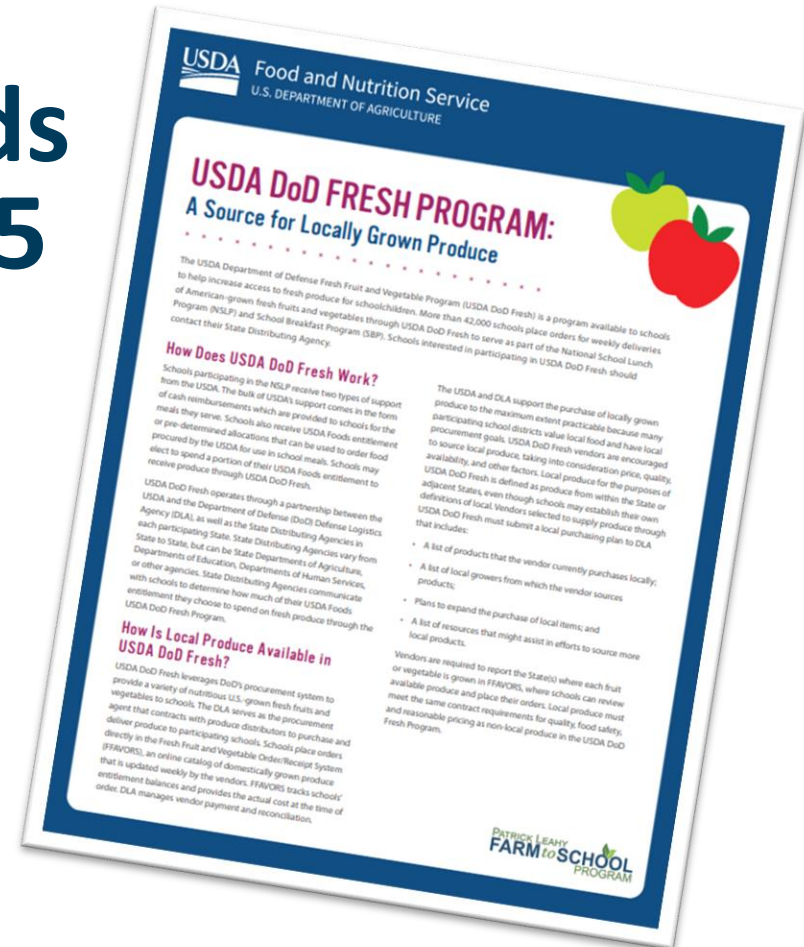
SY 25-26 Annual Order Period

- **Closes March 7**
- **Spending options:** USDA Foods, DOD Fresh, Diversion to Processors
- [Diversion to Processor Fact Sheet](#)
- [ICS Instructions](#)
- **Questions?** Email fdp@isbe.net

Food Distribution Program

Additional DOD Funds Available for SY 24-25

- Email Paula Williams at pawillia@isbe.net to request additional funds
- [USDA DoD Fresh Program Fact Sheet](#)



Farm to Child Nutrition Programs

- Round 1 of **Local Food for Schools** funding extended through Jan. 31, 2026!
- To sign up:
 - Watch the recorded training module:
https://www.youtube.com/watch?v=6V_foXifhlo
 - Email: localfoods@isbe.net
(Include district/school name, RCDT, and acknowledge you have viewed the recording)



Farm to Child Nutrition Programs

- Round 1 additional LFS funding available

Requesting Additional LFS Funds

School Food Authorities (SFAs) that have signed up for Local Food for Schools (LFS) and have used up their LFS allotment and would like to request additional funds, ISBE will do our best to approve requests for additional funds. Please see the guidelines and instructions for submitting a request.

Guidelines for submitting a request for additional funds

- Only request funds that you know you will spend in the next 30-90 days (limited exceptions will be made & please include an explanation in your request).
- SFAs can submit multiple requests during the LFS funding period, SFAs are not limited to just 1 or 2 requests for additional funds.
- Submit requests with at least 5 business days of advanced notice.
- We cannot guarantee additional fund requests will be approved. Therefore, it is not recommended to purchase additional local foods until you receive an official approval to your request from ISBE. The SFA would be responsible for any purchases made that exceed the ISBE approved allotment.
- Purchases made with additional LFS funds must remain in compliance with all applicable LFS requirements.

Instructions for submitting a request for additional funds

- Submit an email to localfoods@isbe.net that contains the following information:
 - Name of the SFA (sponsor name – ex. school district, school, Church, RCCI sponsor, Juvenile Detention Center)
 - RCDT/Agreement Number – 11-digit number for your SFA (this number can be found in the WINS system at the top of your home page)
 - Dollar amount you would like to request
 - If the funds are not going to be used in the next 30-90 days provide an explanation of the scenario.

After submitting a request for additional funds

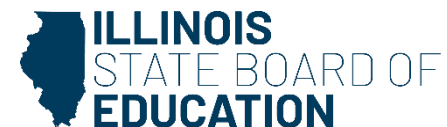
- ISBE staff will review and approve or deny request as quickly as possible. Please allow up to 5 business days for a response.
- ISBE staff will notify the requester in writing of the approval or denial of the request.
- Once approved, the SFA may move forward with their LFS purchase.



– Instructions to request more:

<https://www.isbe.net/Documents/Requesting-Additional-LFS-Funds.pdf>

- Second round announced by USDA

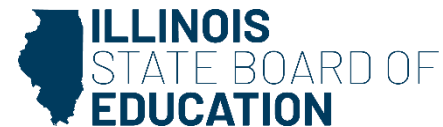


Farm to Child Nutrition Programs

F2S Spotlight: Carbondale ESD 95

"We received the Local Food for School funding and it was a huge help. I was able to purchase ground beef from a local rancher, and then I received extra funds and purchased stew meat and more ground beef. The money came in so helpful, I was able to make it through the school year with fresh ground beef. I purchased the stew meat and added Beef and Noodles to the menu. THE KIDS LOVED THEM. This young man said I'll let you take my picture if I get another bowl. I'm very grateful for the extra funds."

- Carbondale ESD 95 Food Service Director Sherry Wyatt



Email your LFS success stories to localfoods@isbe.net.

Summer Meals

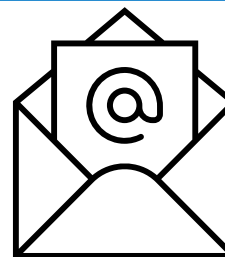
- SNP sponsors required to notify families about the Summer Meals
- Materials include flyers, a poster, yard sign, postcard, and social media graphics in English and Spanish.
- Be sure to document your outreach efforts each school year



<https://www.isbe.net/Pages/Summer-Food-Service-Program.aspx>

Questions?

Email cnp@isbe.net



Call (800) 545-7892
(toll free in Illinois)
or (217) 782-2491

