



# ISBE Student Assessment and Accountability Update

Illinois State Board of Education

April 12, 2019



*Look for the GNU  
for NEW information!*





# Order of Topics in Presentation

- General Updates
- Illinois Assessment of Readiness (IAR)
- Illinois Science Assessment (ISA)
- Dynamic Learning Maps-Alternate Assessment (DLM-AA)
- State-Sponsored SAT<sup>®</sup>, PSAT<sup>™</sup>10, and PSAT<sup>™</sup>8/9
- WIDA/ACCESS
- Upcoming Webinars
- Contact Information



# New Test Security Survey

- The Federal Peer Review process Critical Element 2: Assessment Systems Operation requires states to monitor test administration security procedures for all State Accountability Assessments (SAA).
- To ensure a fair and accurate administration and the security of SAA's and their test items, **all educational and support staff who handle test materials** are expected to **read, understand and comply with the Test Security documents** produced and distributed by ISBE for the various assessment programs.
- This survey collects information at the **district level** regarding **training procedures** and an affirmation from the **superintendent (or designee)** to comply with the information contained in the Test Security Agreement.



## New Test Security Survey

- Linked off the main assessment pages(IAR, SAT, etc.)

ADMINISTRATORS TEACHERS FAMILIES & STUDENTS COMMUNITY & PARTNERS NEWS & MEDIA

> Assessment > Illinois Assessment of Readiness (IAR)

ASSESSMENT  
ILLINOIS ASSESSMENT OF READINESS (IAR)

The Illinois Assessment of Readiness (IAR) is the state assessment and accountability measure for Illinois students enrolled in a public school district. IAR assesses the New Illinois Learning Standards Incorporating the Common Core and will be administered in English Language Arts and Mathematics.

IAR assessments in English Language Arts and Mathematics will be administered to all students in grades 3-8.

RESOURCES

- Archived PARCC Information
- IAR Pre-ID Data Elements in SIS
- Letter from State Superintendent Smith on the Future of 3-8 Assessment and PARCC
- 2018-19 State Assessment Dates
- Reason for No Valid Test Attempt PAR, SAT and DI (M-AA)
- Assessment Security Monitoring Survey

Manuals & Technology

Test Information & Resources

Presentations & Webinars



## New Test Security Survey

- Very short (~2 minutes to complete)
- Will help ISBE provide supports and target monitoring.
- Only needs to be completed **once per district**, and applies to all state assessments.

TEACHERS FAMILIES & STUDENTS COMMUNITY & PARTNERS

ASSESSMENT > Assessment Security Monitoring Survey

**ASSESSMENT**  
Assessment Security Monitoring Survey

**ASSESSMENT**  
**ASSESSMENT SECURITY MONITORING SURVEY**

The Federal Test Review process Critical Element 2, Assessment Systems Operation requires states to monitor test administration procedures for all State Accountability Assessments (SAAs). To ensure a fair and accurate administration and the security of SAAs and their test items, all educational and support staff who handle test materials are expected to read, understand and comply with the Test Security documents produced and distributed by ISBE for the various assessment programs. This survey collects information at the district level regarding training procedures and an affirmation from the superintendent (or designee) to comply with the information contained in the Test Security Agreement below.

**DISTRICT INFORMATION**

District Linkage: Type part of the District name in the RCITS code and click the Search button. Then, select the District from the dropdown.

District:

District Primary Contact Name:  District Primary Contact Phone:  District Primary Contact Email:

**CONTACT INFORMATION**

Contact Name:  Contact Email:  Contact Title:

**TRAINING INFORMATION**

How do you plan to train your people? (Check all that apply)

☐ In-person training (district, building, cooperative) ☐ Webinars ☐ Security agreement forms ☐ ISBE provided trainings ☐ ISBE Student Data Privacy shared link ☐ Other

**TEST SECURITY AGREEMENT**

State accountability assessments (SAAs) conducted by The Illinois State Board of Education (ISBE), and the items and content contained within the SAAs, are secure, copyrighted materials. These assessments are used to Federal accountability requirements to measure and report the educational performance of students in Illinois. To ensure a fair and accurate administration and the security of SAAs and their test items, all educational and support staff who handle test materials are expected to read, understand and comply with the Test Security documents produced and distributed by ISBE for the various assessment programs. These materials can be found at the Student Assessment and Accountability website.

I, the undersigned, acknowledge that I will have access to the SAA, and the confidential information contained in the SAA. I understand that this access to the SAA carries with it the responsibility to:

- (a) read and understand the SAA Test Security documents, produced and distributed by ISBE for the various assessment programs found at the Student Assessment and Accountability website;
- (b) comply with the "Test Security" measures contained in those materials;
- (c) guard against unauthorized copying, reproduction, distribution or use of the SAA;
- (d) abide by all test security requirements and guidelines instituted by ISBE, my district and school; and
- (e) oversee the training for individuals within my organization to ensure they also understand and follow the Test Security requirements contained with the aforementioned documents.

I further understand that any unauthorized copying, reproduction, distribution or use of the SAA:

- (a) is a violation of copyright held by the Illinois State Board of Education under its contract;
- (b) may compromise the results of the assessment;
- (c) may result in significant loss and damages to the State of Illinois and its affiliates to replace items in the assessment;
- (d) may result in the loss of Federal education funding to the State of Illinois.



# Reason for No Valid Test Attempt (RNVTA)

- Updated for IAR, SAT, PSAT 10, PSAT 8/9, and DLM-AA:  
[www.isbe.net/Documents/reason-no-valid-test-attempt.pdf](http://www.isbe.net/Documents/reason-no-valid-test-attempt.pdf)
- Enter the RNVTA codes **in SIS** for students after your test window has ended for any student who was enrolled during any part of your test window but did not test.
- RNVTA codes are **not** captured in any of the test vendors' systems.
- If a test score is generated for a student, the RNVTA code will be removed when scores are posted in the summer.



# Reason for No Valid Test Attempt (RNVTA)

## Retired RNVTA Codes

Code	Value	Description	Notes
05	Not Enrolled (Retired)	Student was not enrolled during the local testing window (exited prior to the start of the local testing window).	Edit the exit date in the SIS enrollment record to remove the student from the correction report. If the student was enrolled during the local testing window but transferred out before having the opportunity to test or transferred in too late for testing to be feasible, use RNVTA code 07 or 08, as applicable.
06	Not In Valid Grade or Course (Retired)	Student was erroneously classified during the time of testing as being in a grade in which a state assessment is given. This code also applies to records with the incorrect test identified (i.e., shows IAR or SAT but should be DLM-AA or vice versa).	Edit the grade in the SIS enrollment record to remove the student from the correction report or move the student to the correct assessment, as applicable.



# Reason for No Valid Test Attempt (RNVTA)

## District-Applied RNVTA Codes

Code	Value	Description	Notes
01	Medically Exempt	Student (a) was hospitalized because of medical emergencies or procedures (e.g., because of a motor vehicle or other type of accident, surgery, psychiatric emergency) during the time of testing or (b) was participating in residential programs that provide psychological treatment or treatment for drug or alcohol abuse during the time of testing and it was not feasible to schedule makeup testing (contact ISBE for guidance in determining feasibility).	Student is excluded from participation and proficiency calculations.
02	Homebound	Student was homebound during the time of testing, and it was not feasible or appropriate for the student to be tested due to their medical condition.	Student is excluded from participation and proficiency calculations.
03	In Jail/Locked Facility	Student was in jail or a locked facility during the time of testing.	Student is excluded from participation and proficiency calculations.
04	Out of State/Country	Student was residing in or attending a facility located out-of-state or out-of-country during the time of testing. This includes any Illinois student in a foreign exchange program.	Student is excluded from participation and proficiency calculations.





## Reason for No Valid Test Attempt (RNVTA)

### District-Applied RNVTA Codes

Code	Value	Description	Notes
07	Transferred Out Prior to Testing	Student transferred out (exited) prior to the end of the local testing window but had not started testing.	Student is excluded from participation and proficiency calculations.
08	Transferred In After Test Administration	Student transferred in (enrolled) during the local testing window after starting or completing testing at his/her previous school. This code also applies to students who transfer in during the local test administration window too late for testing to be feasible (contact ISBE for guidance in determining feasibility).	Student is excluded from participation and proficiency calculations.
09	Deceased	Student died prior to testing or during the time of testing.	Student is excluded from participation and proficiency calculations.
10	Absent from Testing	Student should have tested, and other definitions do not apply.	Use of this code will affect participation and may affect proficiency rates.
15	Refusal but Present to Test	For IAR, student was presented with a test booklet or an online test ticket but refused to engage with the test. For DLM-AA, student was presented with testlet(s) but refused to engage with the test. For SAT, PSAT 10, or PSAT 8/9, student was presented with a test booklet but refused to engage with the test.	Use of this code will affect participation and may affect proficiency rates.
16	Part-Time Enrollment	This code applies to students who are enrolled only part-time in a public school and are homeschooled or attend a private school part-time. Students who are receiving instruction from the public school in a tested content area must participate in that content-area test. This code should be used for all other content-area tests in which the student is not receiving instruction from the public school.	Student is excluded from participation and proficiency calculations.



## Reason for No Valid Test Attempt (RNVTA)

### ISBE-Applied RNVTA Codes

Code	Value	Description	Notes
18	PSS-SIS Use Only	This not tested reason is applied automatically to any SIS enrollment record having YES for the Private School Student (PSS) Indicator. Districts may use code 16 for students whose Private School Student Indicator was erroneously set to NO.	Student is excluded from participation and proficiency calculations.
19	Reserved for Internal Use-SIS Use Only	This RNVTA is applied by Student Assessment in cases where participation credit should not be given	Use of this code will affect participation and may affect proficiency rates.
21	Reserved for Internal Use-Scale Score for Content Area Exists in Another School	Student has scale score for the content area in another home school, so SIS applies code 21 automatically when the RNVTA is blank for the home school without the score.	Student is excluded from participation and proficiency calculations.
22	Reserved for Internal Use-SIS Use Only	This RNVTA is applied by Student Assessment in cases when the student is excluded from participation and proficiency calculations.	Student is excluded from participation and proficiency calculations.
23	Reserved for Internal Use-SIS Use Only (First Year in U.S. School)	This RNVTA is applied by SIS after the data corrections window closes to a record having YES for the First Year in U.S. School Indicator.	Student is excluded from participation and proficiency calculations.



# Reason for No Valid Test Attempt (RNVTA)

## ISBE-Applied RNVTA Codes (Grade 12 Records)

Code	Value	Description	Notes
50	Reserved for Internal Use SIS Use Only (Grade 12 Exempt- Programming)	This RNVTA is applied by SIS to a grade 12 record when evidence of a test exemption exists and was found by programming. <a href="http://www.isbe.net/Documents/Grade_12_Testers_Flow_Chart_2019.pdf">www.isbe.net/Documents/Grade_12_Testers_Flow_Chart_2019.pdf</a>	Student is excluded from participation and proficiency calculations.
51	Reserved for Internal Use Assessment Use Only (Grade 12 Exempt- SIS Evidence)	This RNVTA is applied by Student Assessment to a grade 12 record when evidence a test exemption exists in a SIS enrollment record or is provided by the test vendor.	Student is excluded from participation and proficiency calculations.
52	Reserved for Internal Use Assessment Use Only (Grade 12 Exempt- District Submission)	This RNVTA is applied by Student Assessment to a grade 12 record when a district submits exemption paperwork on behalf of a student.	Student is excluded from participation and proficiency calculations.



# **2018-19 IAR**

## **ILLINOIS ASSESSMENT OF READINESS**



## Illinois Assessment of Readiness



### ★ Program Information



#### ILLINOIS ASSESSMENT OF READINESS (IAR)

The IAR assesses progress of students in grades 3-8 in meeting the Illinois Learning Standards in English language arts and mathematics.

- Allows students to demonstrate what they know and can do in math and English language arts
- Provides a measure of college and career readiness for students
- Contains high-quality test items that measure the full range of state adopted standards
- Assists educators in supporting student learning
- Makes use of technology in assessments; and advances accountability at all levels

#### Features

PearsonAccess serves as the entry point to all Pearson services used by school districts.

Sign In

Contact Us

Illinois Customer Support

1-833-213-3879

Monday - Friday

6:00 am - 6:00 pm (CT)

Related Links

- [Help and FAQs](#)
- [PearsonAccess<sup>next</sup> Training Site](#)
- [Practice Tests](#)
- [Illinois Pearson Customer Portal](#)



# Illinois Assessment of Readiness

## Test Window:

- **Online Test Administration:**  
**March 11 (earliest) – April 26 (latest)**
- **Paper Test Administration:**  
**March 25 – April 26 (latest)**

**SIS Correction Window (for IAR) scheduled to open April 15.**



# Illinois Assessment of Readiness

- The additional order window is open.  
Additional orders can be placed in *Pearson Access Next* under:  
**Setup – Orders and Shipment Tracking.**



# Illinois Assessment of Readiness

- District/School staff can proctor cache now.
  - Proctor caching for Mac is available. Contact Wes Bruce at [wbruce@isbe.net](mailto:wbruce@isbe.net) or Pearson “Level 2” support.
- District/School staff can **prepare** sessions now through April 26.





## Illinois Assessment of Readiness

- Information on IAR Administration
  - <https://il.mypearsonsupport.com/>

The screenshot shows the home page of the Illinois Assessment of Readiness (IAR) website. The header includes the Illinois State Board of Education logo and the text "ILLINOIS Assessment of Readiness". Below the header is a navigation bar with links: Home, PearsonAccess<sup>next</sup>, Technology Setup, Training Resources, Reporting, Test Preparation, and Support. The main content area is titled "Home" and contains a paragraph explaining the IAR's purpose: "The Illinois Assessment of Readiness (IAR) assesses progress of students in grades 3-8 in meeting the Illinois Learning Standards in English language arts and mathematics. This site hosts all of the tools necessary for Test Coordinators, Technology Coordinators, and Test Administrators to prepare for and administer assessments." To the right of this text is a circular image of a teacher and a student. Below the main text are six sections, each with an icon, a title, a brief description, and a "View" button: 1. PearsonAccess<sup>next</sup>: "Sign in to PearsonAccess<sup>next</sup> for all administrative tasks for test administration." 2. Technology Setup: "Prepare your system for online assessments." 3. Training Resources: "Access trainings, manuals, and other resources to prepare for and administer assessments." 4. Test Preparation: "Users can access sample items, TestNav 8 tutorials, and practice tests to prepare for the tests." 5. Reporting: "Access a variety of reporting resources from interpretive guides, to report samples, and file layouts." 6. Support: "Assistance is available via email, chat, or phone." At the bottom of the page is a "Key Dates - Spring 2019" section with a table.

★ Key Dates - Spring 2019	
IAR Spring 2019 Testing Window - online testing	3/11/2019 - 4/26/2019
IAR Spring 2019 Testing Window - paper testing	3/25/2019 - 4/26/2019



## Illinois Assessment of Readiness

- As information becomes available, it will be posted on the ISBE IAR website: [www.isbe.net/Pages/IAR.aspx](http://www.isbe.net/Pages/IAR.aspx)

The screenshot shows the Illinois State Board of Education website. The header includes the ISBE logo, navigation links (System Quick Links, Illinois Report Card, Careers at ISBE, Contact Us), and social media icons (Twitter, Facebook). A search bar is also present. The main navigation bar lists: HOME, ADMINISTRATORS, TEACHERS, FAMILIES & STUDENTS, COMMUNITY & PARTNERS, NEWS & MEDIA, and TOPICS. The breadcrumb trail reads: Home > Assessment > Illinois Assessment of Readiness (IAR). The left sidebar has an 'ASSESSMENT' section with a link to 'Illinois Assessment of Readiness (IAR)' and a 'RESOURCES' section with links to Archived PARCC Information, IAR Paper Test Waiver Request, IAR Pre-ID Data Elements in SIS, Letter from State Superintendent Smith on the Future of 3-8 Assessment and PARCC, 2018-19 State Assessment Dates, and Reason for No Valid Test Attempt (IAR, SAT and DLM-AA). The main content area is titled 'ILLINOIS ASSESSMENT OF READINESS (IAR)' and includes a description of the assessment, the Illinois Assessment of Readiness logo, and a list of resources. The resources list includes 'Illinois Assessment of Readiness: Same Standards, Same Content, Improved Administration' and three expandable sections: 'Manuals & Technology', 'Test Information & Resources', and 'Presentations & Webinars'.

Illinois State Board of Education

System Quick Links • Illinois Report Card • Careers at ISBE • Contact Us

HOME ADMINISTRATORS TEACHERS FAMILIES & STUDENTS COMMUNITY & PARTNERS NEWS & MEDIA TOPICS

Home > Assessment > Illinois Assessment of Readiness (IAR)

ASSESSMENT

Illinois Assessment of Readiness (IAR)

RESOURCES

- Archived PARCC Information
- IAR Paper Test Waiver Request
- IAR Pre-ID Data Elements in SIS
- Letter from State Superintendent Smith on the Future of 3-8 Assessment and PARCC
- 2018-19 State Assessment Dates
- Reason for No Valid Test Attempt (IAR, SAT and DLM-AA)

ILLINOIS Assessment of Readiness

The Illinois Assessment of Readiness (IAR) is the state assessment and accountability measure for Illinois students enrolled in a public school district. IAR assesses the New Illinois Learning Standards Incorporating the Common Core and will be administered in English Language Arts and Mathematics.

IAR assessments in English Language Arts and Mathematics will be administered to all students in grades 3-8.

- Illinois Assessment of Readiness: Same Standards, Same Content, Improved Administration

Manuals & Technology

Test Information & Resources

Presentations & Webinars



# Illinois Assessment of Readiness

- Irregularity Report – Form  
on <https://il.mypearsonsupport.com/> - Resources tab -  
under Forms
- Send to - <https://www.isbe.net/Pages/Home.aspx>
  - Under System Quick Links – Send ISBE a File
  - Or Fax to 217-782-6097
- **Transferring Student – Directions**  
<https://support.assessment.pearson.com/display/PAsup/Request+Enrollment+Transfer>



# Illinois Assessment of Readiness

- When requesting a student transfer in Pearson Access Next, please remember to update the student enrollment status in SIS.
- When making student transfer requests, some test records will have completed or partially completed tests. If your school receives a student test that is completed (e.g., math), and another test that is partially complete, or not started (e.g., ELA). Leave the completed test (e.g., math) in the transfer session.
- Students tests that are transferred to a new school and are partially completed show up under "Sessions" in a Transfer Session. The partially-completed student test(s) need to be moved from the Transfer Session to an established local test session.
- **Stopping Sessions**  
In order to stop a session, all units in the session need to be listed as "Complete" or "Marked Complete." If there is a student test in a session that will not be started (never started - for whatever reason), remove the student test from the session. You do not need to mark the units complete if the test was never started.



## Highlighted Points from Coordination Manual

- Pages 5-6 – Electronic Devices
- Pages 7-8 – Administrative Considerations
- Page 11 – Field Test
- Pages 11-12 – Make-up Tests
- Page 26 – Headphones
- Pages 27-28 – Calculators
- **Pages 42-55 – Returning Test Materials**
- **Pages 43-44 – Stopping Test Sessions**
- Appendix B – Security Agreement
- Appendix C – State Policy Addendum
- Appendix D – Irregularity Report
- Appendix E – Missing Secure Material Form
- Appendix F – Testing Multiple Grades
- Back Cover – Codes for Special Format Tests





## Participation in State Assessments



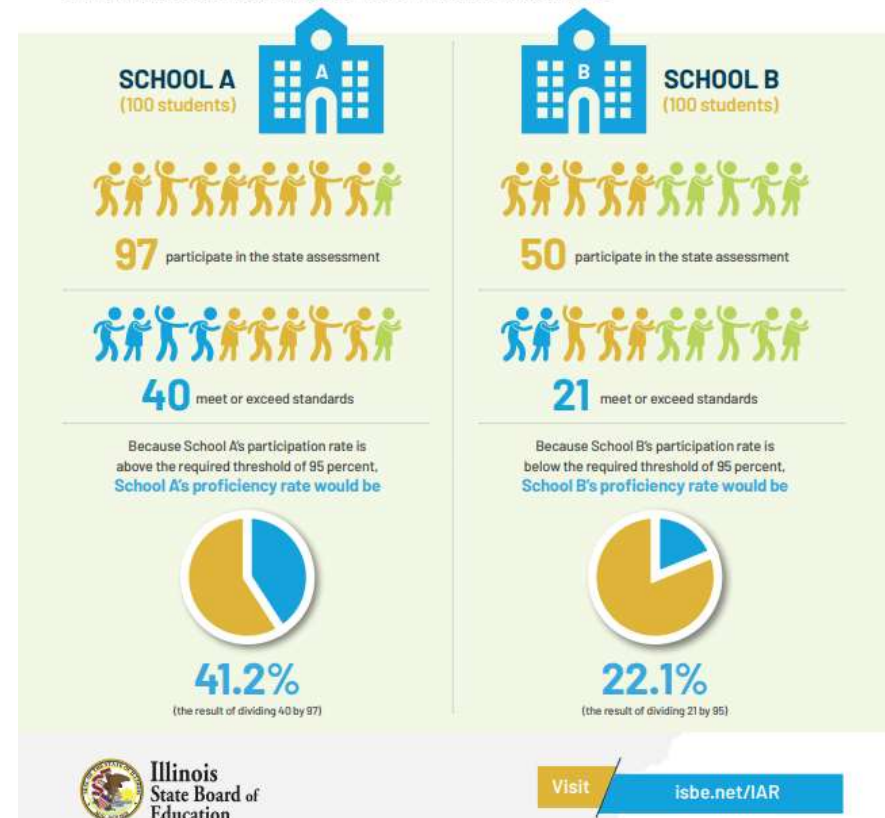
The federal Every Student Succeeds Act (ESSA) sets the expectation that every student participates in state assessments and requires that states calculate rates of proficiency out of at least **95% OF ELIGIBLE STUDENTS**. Universal participation in assessments promotes equity, excellence, and transparency.



## Impact of Participation in IAR



A school's participation rate on state assessments impacts its rate of proficiency and its annual designation. ESSA requires states to calculate proficiency by dividing the number of students who met or exceeded standards by either the number of students who tested or 95% of the number of students who should have tested, whichever is greater. Schools with less than 95% participation in state assessments are ineligible to receive the Exemplary designation. Schools with any student group that has a participation rate below 95% for three consecutive years will develop and implement a Workplan for School Improvement. English Learners must take all portions of the IAR to meet federal requirements, even those in their first year in the U.S. Their results in that first year provide a baseline for growth but do not count for accountability.



<https://www.isbe.net/Documents/Impact-of-Participation-IAR.pdf>



# Current Software Versions

- Current Versions of TestNav as of 2/25/19
  - Chrome - 1.7.96
  - Windows - 1.7.3.1
  - Mac - 1.7.3.1
  - Linux - 1.7.3.1
  - Windows 10 - 1.7.3.1
  - Apple iOS - 1.7.0
- Current Versions of Proctor Caching
  - Windows – 2018.11
  - Mac – 2018.7
- Chrome OS 72 is supported for both IAR and ISA



# Stopping Sessions

- Please STOP your sessions once testing is complete
  - 55,566 sessions still in progress (4/11/19)
- Select all sessions "In Progress" (use filter on left)
  - Go to **Students in Sessions**, Select **Combined View**
  - Click **Stop All Sessions**
    - This will stop all sessions where all students are "Complete"
    - The remaining sessions will have students who need to be removed or "Marked Complete"
      - Remove students who never logged on, then mark remaining students complete (reason is required)
  - To get a list of students who have not completed the test
    - Including those who have not started
    - Run either the "Student" report, **Students Tests that have been Assigned but have not yet Completed.**
    - Or run the "Online" report, **Students Currently Testing Online.**





# **ISA**

## **(ILLINOIS SCIENCE ASSESSMENT)**



# IWAS, Assessments System Listing

- In the IWAS, Assessments System Listing, students will begin to move from the “Students with no test attempt” list to the “Students with a test attempt” list.
  - This process will happen each night as ISBE receives the submitted tests from the vendor.
  - This will allow for an easier distinction for identifying which students need a RNVTA.
  - Students that were manually added in ISBE Teach via the “+ Add Single Student” button will not show up in the “Students with a test attempt” list until after all testing is completed.
- Participation rate will still not be displayed until test scores are processed.



# ISA Students w/o Course Assignments

- Look under SIS – bottom left of landing page  
– Students Missing Courses Report

Course Data Quality (PreK-12)	
Serving Location : All Districts	
Unique Student Count	2078325
Unique Teacher Count	124271
Student Teacher Ratio	16
Unique Course Count	1206331
<a href="#">Courses Missing Students</a>	106124
<a href="#">Courses Missing Teachers</a>	138985
<a href="#">Students Missing Courses</a>	298206



# ISA Students w/o Course Assignments

- ISBE will add students to your ISA roster using the following logic:
  - Enrollment home school is in our 2019 ISA organization list
  - Enrollment is for high school
  - Enrollment time intersects with ISA test window (3/1 – 4/30)
  - Enrollment is not flagged as erroneous
  - **Enrollment does not have course assignments associated with it (blank course assignment data)**
  - Student does not already exist in our current roster for 2019
  - Student does not have previous credit (same logic as our rostering)
  - Student does not have DLM-AA (same logic as our rostering)
- These students will require a RNVTA and may impact your participation rates.



# ISA Corrections

## IWAS – Assessments System Listing

- Open now for RNVTA
- Clean up students w/o course assignments
- I anticipate scoring will end the middle part of July
- ISBE/SIUC run psychometrics mid to end of July
- ISBE post scores into IWAS late July
- **Corrections close July 31 (end of SIS collection)**
- Send data to SIUC to print & ship reports August 1



# ISA Webinar

The **February 14, 2019, ISA Webinar** resources are now posted to the ISA website.

- [Presentation](#)
- [Systems User Guide Walkthrough](#)
- [Video](#)
- [FAQ](#)



# ISA Notes

- Test Window: March 1 – April 30, 2019
- User Accounts
  - Additional accounts must be added by district and school staff.
  - See page 12 of [Systems User Guide](#) to add a single user
  - See page 19 of [Systems User Guide](#) to add additional schools to a user
- ISA Rosters
  - [Import Wizard FAQ](#) - Item #1 is the first step to take before calling ISBE
- 2019 RNVTA Collection is Open in IWAS, Assessments



# Windows SEB Known Issue

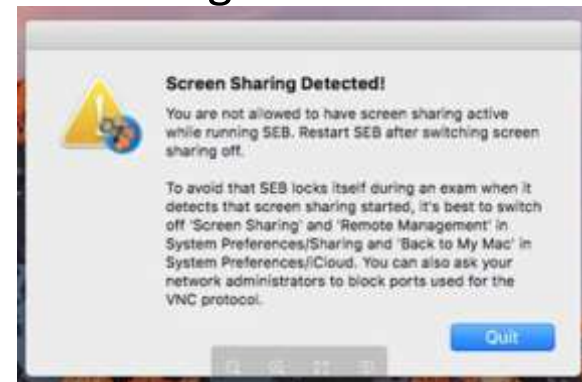
- If you are currently testing with the 2019 Windows SEB and experiencing no issues, then continue with your current configuration.
- We have had reports of intermittent issues with the 2019 Windows SEB v2.2.2.
- After researching, no root cause can be identified.
- As such, ISBE recommends districts that have not started ISA testing to roll back to the 2018 Windows SEB, v2.1.8.
- ISBE has updated the Assessment Technology Requirements area of the ISA website <https://www.isbe.net/Pages/Illinois-Science-Assessment.aspx> with the v2.1.8 files for Windows .exe and .msi files and has removed the 2019 SEB v2.2.2.
- The steps are to uninstall the 2019 SEB and then install the 2018 version.





## SEBs

- All SEBs are available in the Assessment Technology Requirements section of the ISA site.
- You must install the 2019 SEBs from our site.
  - NOT Windows (previous slide).
- Run the Install Check to verify the system works though submission of a test record
  - MAC: Some Jamf users have had a Screen Sharing error
  - Resolution: Use Posted version for Mac OS 10.11





# EPS ISA Coordinator Fields

- If identified as the ISA Coordinator at the district level, do not also list as the ISA Coordinator at the school level.
- Use the school level for another user, as the district coordinator will have access to all schools.
- We experienced mismatches between district and school levels which may have impacted your user account.
- If you are missing schools or have both the district and schools listed in your organization access dropdown, contact Dan Brown for assistance ([dabrown@isbe.net](mailto:dabrown@isbe.net)).



# **2018-19 DLM-AA**

**(DYNAMIC LEARNING MAPS-ALTERNATE ASSESSMENT)**



## DLM-AA: Student Uploads

- The last day for students to be added for DLM will be April 30.
- District are **not** to manually upload students.
  - Any student missing must request the student to be uploaded by sending an email to Laura Quimby at [lquimby@isbe.net](mailto:lquimby@isbe.net).
- Any student who is manually uploaded with an incorrect SIS ID will be exited.



## DLM-AA: Teacher Surveys

- DLM is wanting teachers to complete the survey at the end of testing.
- Information is used to enhance and improve DLM.
- This can be done at any time during the testing window.





# DLM-AA: Data Extract Reports

- Reports should be used to verify completion of tasks during testing.
- More important reports to be downloaded include:  
DLM Test  
Administration Monitoring  
report, First Contact Survey  
Report, Training Status  
Report.

SETTINGS + MANAGE TESTS + REPORTS + HELP

District Test Coordinator

STANDARD DATA EXTRACTS

Note: Student data extracts include Personally Identifiable Information (PII), so please take the appropriate precautions to protect saved files.

Extract	Description	Requested	File	Action
Current Enrollment	Current enrollment information for active students.	01/25/2019 07:54 AM	CSV	New File
DLM Test Administration Monitoring	Testlets assigned, in progress, and completed by subject, and student.	10/04/2018 09:42 AM	CSV	New File
First Contact Survey File	Current First Contact survey settings by student.	01/25/2019 07:53 AM	CSV	New File
PIIP Setting Counts	Student PIIP setting counts by organization.	01/23/2019 08:02 AM	CSV	New File
PIIP Settings	Personal Needs and Preferences (PIIP) settings by student.	01/23/2019 08:03 AM	CSV	New File
Roster	Student assignment by educator and subject.	01/25/2019 07:53 AM	In Progress	New File
Security Agreement Completion	Security Agreement status by organization.	01/25/2019 07:53 AM	CSV	New File
Training Status	List of DLM users by organization and their training completion status.	01/25/2019 07:53 AM	CSV	New File
Users	Educator Portal users and their associated role(s).	01/25/2019 07:53 AM	CSV	New File

SETTINGS + MANAGE TESTS + REPORTS + HELP

Teacher Reports

STANDARD DATA EXTRACTS

Note: Student data extracts include Personally Identifiable Information (PII), so please take the appropriate precautions to protect saved files.

Extract	Description	Requested	File	Action
Current Enrollment	Current enrollment information for active students.	01/25/2019 07:54 AM	CSV	New File
DLM Test Administration Monitoring	Testlets assigned, in progress, and completed by subject, and student.	10/04/2018 09:42 AM	CSV	New File
PIIP Setting Counts	Student PIIP setting counts by organization.	01/23/2019 08:02 AM	CSV	New File
PIIP Settings	Personal Needs and Preferences (PIIP) settings by student.	01/23/2019 08:03 AM	CSV	New File
Roster	Student assignment by educator and subject.	01/25/2019 07:53 AM	In Progress	New File



# DLM-AA: First Contact Survey

- Must be completed for every student prior to testing.
- First contact survey were to be completed by March 12, 2019.
- If not completed, then it delays the delivery of the testlets when the test window opens.
- Currently, the status of complete or incomplete First Contact Surveys is noted below:

★ – 13,816 completed ★

- 631 not started
- 1195 ready to submit
- 894 in progress



## DLM-AA: Rosters

- Subjects are only **English language arts, mathematics, and science.**
- Do **not** use "other" or "social studies."
- Science rosters are for students in grades **5, 8, and 11.**
- Students placed onto incorrect rosters are being removed from those rosters.





## DLM-AA: Recruitment

- DLM is seeking volunteers to participate in events such as testlet development, testlet review, score validation of writing testlets. This includes general education teachers, special education teachers, content specialists, etc.
- In previous years, DLM staff had sent out many surveys to complete as part of recruitment.
- There is only one survey to take and it takes approximately ten minutes to complete as part of the recruitment process.
- DLM is requesting for recruitment more male, ethnic background, higher education, and those who have post-secondary background.
- The survey can be found below:  
[https://kusurvey.ca1.qualtrics.com/jfe/form/SV\\_6DcxFBgLc5Btxc1](https://kusurvey.ca1.qualtrics.com/jfe/form/SV_6DcxFBgLc5Btxc1)



# DLM-AA: Security Awareness

- When discussing student information via email, please do not use student PII (personally-identifiable information).
- Please adhere to FERPA rules.
- ISBE Student Data Policy can be found at the below link:  
[www.isbe.net/Pages/Student-Data-Privacy-Overview.aspx](http://www.isbe.net/Pages/Student-Data-Privacy-Overview.aspx)



# DLM-AA: Test Window

## 2018-19 Test Window:

— March 13 - May 8, 2019



## **STATE-SPONSORED SAT<sup>®</sup>, PSAT<sup>™</sup>10, AND PSAT<sup>™</sup>8/9**



# SAT/PSAT Spring 2019

- PSAT 8/9 (NEW, required for grade 9)
- PSAT 10 (NEW, required for grade 10)
- SAT (required for grade 11)
  - *NEW, some* grade 12 students will be required to participate in SAT in spring 2019. ISBE has posted a flowchart to help identify which grade 12 students will be included in SAT Pre-ID.  
[www.isbe.net/Documents/Grade\\_12\\_Testers\\_Flow\\_Chart\\_2019.pdf](http://www.isbe.net/Documents/Grade_12_Testers_Flow_Chart_2019.pdf)



## Fifteen-Year-Old Students with Disabilities (with an IEP) in Elementary School Districts

[www.isbe.net/Documents/Guidance-15YO-IEP-ESD.pdf](http://www.isbe.net/Documents/Guidance-15YO-IEP-ESD.pdf)

- Contact Megan Forness ([mforness@isbe.net](mailto:mforness@isbe.net)) if you have questions pertaining to the PSAT 8/9.
- Contact Dan Brown ([dabrown@isbe.net](mailto:dabrown@isbe.net)) if you have questions pertaining to the ISA.



# SAT/PSAT Spring 2019 Dates

- SAT (grade 11 and [some grade 12](#))
  - April 9, 2019, primary day
  - April 23, 2019, makeup day
  - April 9-23, 2019, accommodated testing window
- PSAT 10 (Grade 10) and PSAT 8/9 (Grade 9)
  - April 9, 10, and/or 11, 2019, primary day(s)
  - April 10-23, 2019, makeup test window
  - April 9-23, 2019, accommodated testing window



## College Board-Approved Accommodations

- **College Board-Approved Accommodations** allow students to receive scores that are college- and scholarship-reportable.
- College Board-Approved Accommodations for ALL tests, including SAT, PSAT 10 (grade 10), and PSAT 8/9 (grade 9) must be requested via College Board's Services for Students with Disabilities (SSD) Online system by the school that will receive the materials.
- **After March 4, 2019:** Enter request in SSD Online, and call SSD to confirm that materials can arrive in time for testing.





## State-Allowed Accommodations

- **State-Allowed Accommodations** DO NOT allow students to receive scores that are college- and scholarship-reportable.
- State-Allowed Accommodations for ALL tests, including SAT, PSAT 10 (grade 10), and PSAT 8/9 (grade 9) must also be entered via College Board's Services for Students with Disabilities (SSD) Online system by the school that will receive the materials.
- **After March 4, 2019:** Enter request in SSD Online, and call SSD to confirm that materials can arrive in time for testing.



# SAT/PSAT EL Supports

- English learners (ELs) will be able to utilize EL supports for the ISBE-provided spring 2019 SAT, PSAT 10, and PSAT 8/9 administration.
- Use of any EL Support will allow for college- and scholarship-reportable scores.
- **These EL supports include:**
  - Use of an approved word-to-word bilingual glossary
  - Use of translated test directions, and
  - Use of 50% extended time

[www.isbe.net/Pages/SAT-PSAT.aspx](http://www.isbe.net/Pages/SAT-PSAT.aspx)






# SAT Spring 2019 Manuals

*Now posted* – Spring 2019 SAT® School Day Manuals

## SAT, PSAT 10, PSAT 8/9




New this year, ISBE will require public-school students in grade 9 to take the PSAT 8/9 and public-school students in grade 10 to take the PSAT 10, unless the student will take DLM-AA instead. ISBE will continue to require public-school students in grade 11 to take the SAT, unless the student will take DLM-AA instead.

Additionally, some public-school students in grade 12 may also be required to take the SAT or DLM-AA, as appropriate. Please see the [flowchart document](#)  for details about which grade 12 students are required to test.

### News & Updates

### 2018-19 SAT® Information

- **2019 SAT School Day Manuals**

- SAT School Day Coordinator Manual  (1/7/2019)
- SAT School Day Standard Testing Manual  (1/7/2019)
- SAT School Day Accommodated Testing Manual  (1/7/2019)

- [SAT School Day Coordinator Manual](#)
- [SAT School Day Standard Testing Manual](#)
- [SAT School Day Accommodated Testing Manual](#)




# PSAT Spring 2019 Manuals

*Now posted* – Spring 2019 PSAT Manuals

## SAT, PSAT 10, PSAT 8/9


New this year, ISBE will require public-school students in grade 9 to take the PSAT 8/9 and public-school students in grade 10 to take the PSAT 10, unless the student will take DLM-AA instead. ISBE will continue to require public-school students in grade 11 to take the SAT, unless the student will take DLM-AA instead.

Additionally, some public-school students in grade 12 may also be required to take the SAT or DLM-AA, as appropriate. Please see the [flowchart document](#)  for details about which grade 12 students are required to test.


News & Updates

2018-19 SAT® Information

[2018-19 PSAT™ 10 Information](#)

- [2019 PSAT10 Coordinator Manual](#)  (1/7/2019)

[2018-19 PSAT™ 8/9 Information](#)

- [2019 PSAT 8/9 Coordinator Manual](#)  (1/7/2019)

- [Spring 2019 PSAT™ 10 Coordinator Manual](#)
- [Spring 2019 PSAT™ 8/9 Coordinator Manual](#)



# Returning SAT Materials and Makeup Testing

- [SAT School Day Coordinator Manual](#)
  - After the Test Information: pages 49-59
  - Test Coordinators were required to complete a survey by **Thursday, April 11 (yesterday)** to indicate SAT makeup materials counts to the College Board.
  - *Call the College Board immediately if you need SAT makeup materials but did not complete the survey by the deadline: 1-844-688-9995, option 1.*
  - *Materials will likely not arrive until Monday, April 22 for those who did not complete the survey on time and instead placed the order by calling.*





# Returning SAT Materials and Makeup Testing

- **When will my materials arrive?**

SAT makeup materials will deliver to schools between **Tuesday, April 16 and Thursday, April 18, 2019**. Please note this is a slight shift from previously communicated dates to avoid delivery attempts on Friday, April 19 when many schools are out of session.

- **What if I am on spring break when materials are scheduled to arrive?**

For schools that are not in session any day between April 16 and April 18, the first delivery attempt will be made on Monday, April 22 using UPS early AM delivery service. While the delivery time varies based on where you are located within UPS delivery areas, this means that in almost all cases, materials should deliver by noon on the April 22. If delivery on April 22 is unsuccessful, UPS will make a second attempt on Tuesday, April 23, again using UPS early AM delivery.

- **What if I don't receive my materials according to the schedule above?**

- ✓ If you are **in session** the week of April 15 and you haven't received your materials by the morning of Friday, April 19, please contact the Illinois Educator Support hotline by emailing [illinoisadministratorsupport@collegeboard.org](mailto:illinoisadministratorsupport@collegeboard.org) or calling 844-688-9995.
- ✓ If you are **not in session** the week of April 15 and you haven't received your materials by noon on April 22, please contact the Illinois Educator Support hotline by emailing [illinoisadministratorsupport@collegeboard.org](mailto:illinoisadministratorsupport@collegeboard.org) or calling 844-688-9995.





# Returning PSAT Materials and Makeup Testing

- [Spring 2019 PSAT™ 10 Coordinator Manual](#)
  - After the Test Tasks and Information: pages 43-50
  - For PSAT 10 makeups, use the test books you already have and complete all makeup testing no later than April 23.
  - Keep all PSAT 10 test books for re-distribution to students when paper score reports arrive ([see page 46](#)).
- [Spring 2019 PSAT™ 8/9 Coordinator Manual](#)
  - After the Test Tasks and Information: pages 43-50
  - For PSAT 8/9 makeups, use the test books you already have and complete all makeup testing no later than April 23.
  - Keep all PSAT 8/9 test books for re-distribution to students when paper score reports arrive ([see page 46](#)).







# SAT/PSAT Spring 2019

[www.isbe.net/Documents/SAT-PSAT-general-timeline-2019.pdf](http://www.isbe.net/Documents/SAT-PSAT-general-timeline-2019.pdf)

## SAT, PSAT 10, and PSAT 8/9 Timeline for April 2019 Administration

For updates, see [www.isbe.net/Pages/SAT-PSAT.aspx](http://www.isbe.net/Pages/SAT-PSAT.aspx)

College Board Phone: 844-688-9995 | College Board Email: [ilsat@collegeboard.org](mailto:ilsat@collegeboard.org)

Activity	April Timeline
Preadministration Materials Arrive in Schools (includes Answer Sheets and Pre-ID labels)	March 12-14, 2019
Deadline to Verify Pre-ID Information in ISBE's Student Information System (SIS) Purpose: To update Testing RCDTS, student demographic, or grade-level changes since initial transmission. <i>Note: No materials or Pre-ID labels are affected by this update.</i>	March 29, 2019*
Preadministration Session in School	Mid-March-April 8, 2019
SAT Suite of Assessments Test Day Question and Answer Session	March 19, 2019
Test Materials Arrive in Schools	April 2-4, 2019 <i>Delivery date will be adjusted to March 26-28, 2019, for schools on spring break.</i>
<b>Initial Test Date</b>	<b>SAT: April 9, 2019</b> <b>PSAT: April 9 – 11, 2019</b>
Provide SAT Counts of Students Requiring Makeup Testing to College Board	April 9-11, 2019
<b>Accommodated Testing Window (see NAR for eligible students)</b>	<b>April 9-23, 2019</b>
Makeup SAT Test Materials Arrive in Schools	No later than April 19, 2019 <i>Delivery date will be adjusted for schools on spring break but will be no later than April 22, 2019.</i>
<b>Makeup Test Date</b>	<b>SAT: April 23, 2019</b> <b>PSAT: April 10-23, 2019</b>
Deadline to Ship Materials and Answer Sheets for Scoring	April 26, 2019







# SAT/PSAT Spring 2019

## Material Pickup

Assessment	Pickup 1	Pickup 2	Pickup 3
<b>SAT</b>	<b>Wednesday, April 10</b> All initial testing completed on April 9	<b>Wednesday, April 17</b> All testing completed during the accommodated window (shift pickup later as needed)	<b>Wednesday, April 24</b> All makeup testing completed on April 23
<b>PSAT 8/9 &amp; PSAT 10</b>	<b>Friday, April 12</b> All initial testing completed from April 9-11	<b>Wednesday, April 17</b> All testing completed during the accommodated window (shift pickup later as needed)	<b>Wednesday, April 24</b> All makeup testing completed by April 23

- The College Board schedules the accommodated window pickup for the middle of the window (since there is already another pickup scheduled to align with the makeup date). Schools can reschedule the accommodated window pickup to be earlier or later, depending on when accommodated test takers have all completed testing.
- Test Coordinators will receive an email a few days prior to each of the scheduled pickups with confirmation information and rescheduling directions.



# SAT/PSAT Spring 2019

- Guidance for students who have just sustained injuries (e.g., broken hand, arm, wrist) but will be testing is provided.
- Refer to the *SSD Coordinator Handbook* (page 22):  
<https://www.isbe.net/Documents/SSD-Coordinator-Handbook-Spring-2019.pdf>
- Appendix: Support for Students with Temporary Physical/Medical Conditions



# SAT Spring 2019

- "SAT School Day Request to Cancel Test Scores" form
- Students use this form to request score cancellation, which means their scores will not be reported to them or to any colleges. Give your staff copies of this form for each testing room.
- Scores that have been cancelled will still be used for the purpose of accountability and will appear in SIS in mid-July.
- Refer to *SAT School Day Coordinator Manual* (page 12) for more details:  
<https://www.isbe.net/Documents/spring-2019-SAT-coord-manual.pdf>



# SAT Spring 2019 Fee Waivers

From: **College Board** <[collegeboard@e.collegeboard.org](mailto:collegeboard@e.collegeboard.org)>

Date: Mon, Mar 18, 2019

Subject: New Report Posted to Your K-12 Reporting Portal

- Eligible students who take the SAT School Day as part of a state-wide administration will need to be provided with fee waiver codes so that they can access their SAT Fee Waivers and Benefits.
- New for Spring 2019, educators, including testing coordinators, counselors, and/or administrators, will be able to access a list of electronic fee waiver codes via the Download page Custom Reports from College Board option in the College Board's K12 Assessment Reporting Portal.
- If you have any issues accessing or downloading the file, please call 888-SAT-HELP (888-728-4357), or email [k12reports@info.collegeboard.org](mailto:k12reports@info.collegeboard.org).
- Fee Waiver FAQ on the SAT/PSAT page: [www.isbe.net/Documents/SAT-Fee-Waiver-FAQ.pdf](http://www.isbe.net/Documents/SAT-Fee-Waiver-FAQ.pdf)




# SAT/PSAT Spring 2019

- **Test Day Q&A Session Webinar for SAT, PSAT 10, and PSAT8/9**  
**Tuesday, March 19, 2019, 2:30 PM**
- If you missed this, the presentation and its recording are posted now on [www.isbe.net/Pages/sat-psat.aspx](http://www.isbe.net/Pages/sat-psat.aspx) under the "Presentations & Webinars" accordion.
  - [PowerPoint Presentation](#)
  - [Video](#)



# SAT/PSAT Correction (Detail)

- SAT/PSAT corrections opened in SIS April 10 and will close August 16. Do not wait until scores are posted in July to begin your review!



Illinois State Board of Education

Student Information System

View Report

[Home](#)  
[Student](#)  
[Search SID](#)  
[Request New SID](#)  
[Exit Enrollment](#)  
[Assessment Pre-ID](#)  
[Assessment Correction](#)  
[Assessment Unassigned](#)  
[Adjusted Cohorts](#)  
[Evidence Based Funding](#)  
[Prenatal](#)  
[Early Childhood Transition](#)  
[PA 100 - 105](#)  
[Teacher](#)  
[Batch Files](#)  
[Reports](#)

Student

Assessments

Illinois Assessment of Readiness (IAR) Pre-ID

IAR Assessment Test Format (Online or Paper) and Test Window - STEP 1 [Detail](#)

IAR Assessment Pre-ID - STEP 2 [Summary](#) [Detail](#)

DLM-AA

DLM-AA Assessment Pre-ID [Summary](#) [Detail](#)

DLM-AA Correction and Score (all students) [Summary](#) [Detail](#)

DLM-AA Assessment Scores Grid [Summary](#)

DLM-AA Dynamic Learning Maps [Summary](#)

SAT/PSAT

SAT/PSAT Assessment Pre-ID [Summary](#) [Detail](#)

SAT/PSAT Assessment Correction [Summary](#) [Detail](#)

SAT Assessment Scores [Summary](#) [Detail](#)

SAT Assessment Scores Grid [Summary](#)



# SAT/PSAT Correction (Detail)

**Student Information System**  
 View SAT/PSAT Assessment Correction (Detail)

**SAT/PSAT Assessment Correction (Detail)**

School Year	<div style="border: 1px solid black; padding: 2px;">2019</div>
School	<div style="border: 1px solid black; padding: 2px;">All Schools</div>
	<input checked="" type="radio"/> Home <input type="radio"/> Serving <input type="radio"/> Testing
Gender	<input checked="" type="radio"/> Both <input type="radio"/> Male <input type="radio"/> Female
Homeless Indicator	<input checked="" type="radio"/> Both <input type="radio"/> Yes <input type="radio"/> No
Migrant Indicator	<input checked="" type="radio"/> Both <input type="radio"/> Yes <input type="radio"/> No
EL Indicator	<input checked="" type="radio"/> Both <input type="radio"/> Yes <input type="radio"/> No
IDEA Services	<input checked="" type="radio"/> Both <input type="radio"/> Yes <input type="radio"/> No
FRL/Low Income Indicator	<input checked="" type="radio"/> Both <input type="radio"/> Yes <input type="radio"/> No
21st Century Indicator	<input checked="" type="radio"/> Both <input type="radio"/> Yes <input type="radio"/> No
First Year in U.S. School	<input checked="" type="radio"/> Both <input type="radio"/> Yes <input type="radio"/> No
Sort By	<div style="border: 1px solid black; padding: 2px;">Reason For No Valid Test Attempt</div> <div style="border: 1px solid black; padding: 2px; font-size: 0.8em;">           Student Name            Student ID            Race            Gender            Grade            Homeless            Migrant            EL            IEP            FRL            21st Century            First Year In U.S. School            Home RCDTS         </div>

View Report

or

Create PDF Report

recommended,  
to view report

View your SAT/PSAT Assessment Corrections (Detail) report, which will show students grouped by the combination of their home and testing schools.





## SAT/PSAT Correction (Detail)

- To edit demographic data and enter the RNVTA code for any student, enter student information as directed and click Search.

**Illinois State Board of Education**

**Student Information System**  
 Student Assessment - SAT/PSAT

[Home](#)  
[Student](#)   
[Search SID](#)  
[Request New SID](#)  
[Exit Enrollment](#)  
[Assessment Pre-ID](#)   
[Assessment Correction](#)   
[ACCESS](#)  
[DLM-AA](#)  
[IAR](#)  
[KIDS](#)  
[SAT/PSAT](#)  
[Assessment Unassigned](#)

To edit Assessment-specific fields such as Testing School, you must first select the student, provide SID and at least one of the following :

- Last Name
- First Name
- Date of Birth

Then click the 'Search' button.

Assessment Year: 2019

Fields marked with an asterisk \* are required.

Search Criteria
 

\*SID

**AND AT LEAST ONE BELOW**

\*Legal Last Name  \*Legal First Name

\*Date of Birth (mm/dd/yyyy)







## SAT/PSAT Correction (Detail)

- To open fields for editing, click Edit.

**Illinois State Board of Education**

**Student Information System**  
 Student Assessment Correction - SAT/PSAT

Login: MFORNESS

[Home](#)  
[Student](#)   
[Search SID](#)  
[Request New SID](#)  
[Exit Enrollment](#)  
[Assessment Pre-ID](#)   
[Assessment Correction](#)   
[Assessment Unassigned](#)  
[Adjusted Cohorts](#)  
[Evidence Based Funding](#)  
[Prenatal](#)  
[Early Childhood Transition](#)

**SAT**

Reason for No Valid Test Attempt					
SAT/PSAT Corrections (data below should be as of time of testing)					

<b>SID</b>	<b>123456789</b>				
<b>Last Name</b>	<b>SAMPLE</b>	<b>First Name</b>	<b>STUDENT</b>	<b>Middle Name</b>	
<b>Date of Birth</b>	04/25/2002	<b>Gender</b>	Male	<b>Race</b>	White
<b>Grade</b>	11 - Grade 11	<b>Home RCDTS</b>	123456789000001	<b>Testing RCDTS</b>	123456789000001

<b>First Year in U.S. School</b>	No	<b>21st Century Indicator</b>	No
<b>EL Indicator</b>	No	<b>FRL/Low Income Indicator</b>	No
<b>Homeless Indicator</b>	No	<b>IDEA Services</b>	No

Clicking "Edit" allows you to edit fields and select the RNVTA code.





# SAT/PSAT Correction (Detail)

- Edit as needed and click Submit.
- **IMPORTANT:** If you need to edit the student's grade level, you must also do this in the SIS enrollment so the test they are required to take (SAT, PSAT 10, PSAT 8/9) will adjust accordingly.

SAT

Reason for No Valid Test Attempt

Suppress Score

SAT/PSAT Corrections (data below)

SID123456789

Last NameSAMPLE

Date of Birth04/25/2002

Grade11 - Grade

Medically Exempt

Homebound

In Jail/Locked Facility

Out of State/Country

Transferred Out Prior to Testing

Transferred In After Test Administration

Deceased

Absent from Testing

Refusal but Present to Test

Part-Time Enrollment

First Name

White

ing RCDTS123456789000001

First Year In U.S. School

21st Century Indicator

EL Indicator

FRL/Low Income Indicator

Homeless Indicator

IDEA Services (IEP=Yes)

Submit

Cancel





## SAT Grade 12

[www.isbe.net/Pages/sat-psat.aspx](http://www.isbe.net/Pages/sat-psat.aspx)

[www.isbe.net/Documents/Grade 12 Testers Flow Chart 2019.pdf](http://www.isbe.net/Documents/Grade_12_Testers_Flow_Chart_2019.pdf)

### ASSESSMENT

SAT, PSAT 10, PSAT 8/9

### RESOURCES

- 2018-19 SAT/PSAT General Timeline (11/26/2018)
- 2018-19 Established SAT/PSAT Test Centers 12/06/2018)
- 2019-20 SAT/PSAT Dates (Critical Update 11/30/18)
- 2018-19 State Assessment Dates
- **Grade 12 SAT and DLM-AA: Who must test?**
- Reason for No Valid Attempt (PARCC, SAT and DLM-AA)
- SAT/PSAT Pre-ID Data Elements in SIS

### ASSESSMENT

## SAT, PSAT 10, PSAT 8/9

New this year, ISBE will require public-school students in grade 9 to take the PSAT 8/9 and public-school students in grade 10 to take the PSAT 10, unless the student will take DLM-AA instead. ISBE will continue to require public-school students in grade 11 to take the SAT, unless the student will take DLM-AA instead.

Additionally, some public-school students in grade 12 may also be required to take the SAT or DLM-AA, as appropriate. Please see the flowchart document for details about which grade 12 students are required to test.

### News & Updates

#### • Grade 12 Exemption Documents

Submit a grade 12 exemption only for a student who will be graduating before the April 2019 administration of the SAT or DLM-AA and hasn't tested or been identified in SIS as being exempt **or** for a student whose exemption was not identified through ISBE SIS programming according to the flowchart document . If your district believes there is evidence in SIS of an exemption, please write to [assessment@isbe.net](mailto:assessment@isbe.net) for verification before completing any of the grade 12 exemption paperwork.

- Instructions for Secure Submission to ISBE
- Exemption Request form
- Certification of Request form



# SAT/PSAT Score Release in College Board Reporting Portals

Test	Date Student Tested	Date Scores Begin to Release for Students (via their College Board Account)	Date Scores Begin to Release for Educators (via the K12 Reporting Portal)
SAT	*March 6, 2019	March 29, 2019	May 28, 2019
SAT	*March 27, 2019	April 19, 2019	May 28, 2019
SAT	April 9, 2019	May 2, 2019	May 28, 2019
SAT	April 23, 2019	May 16, 2019	May 28, 2019
PSAT 10	April 9-11, 2019	May 20, 2019	June 10, 2019
PSAT 8/9	April 9-11, 2019	May 20, 2019	June 10, 2019

\* Nine schools with scheduling conflicts gave SAT in March 2019.

- Please note: Some scores will be released later for reasons that may include participation in the accommodated testing window or on the makeup testing date, late receipt of answer sheets, missing information on the answer sheet, or other exceptional conditions that require additional attention.



# SAT/PSAT Score Release and Data Corrections in ISBE's SIS

- Data corrections in SIS are scheduled to begin April 10, 2019, and run through Friday, August 16, 2019.
- Scores for SAT, PSAT 10, and PSAT 8/9 are scheduled to be posted in ISBE's Student Information System (SIS) by Monday, July 15, 2019.
- SIS Key Dates:  
[www.isbe.net/Documents/SIS\\_KEY\\_DATES\\_2019.pdf](http://www.isbe.net/Documents/SIS_KEY_DATES_2019.pdf)



# SAT/PSAT Spring 2020 Dates

- **SAT**
  - April 14, 2020, primary day
  - April 28, 2020, makeup day
  - April 14-28, 2020, accommodated testing window
- **PSAT 10 (Grade 10) and PSAT 8/9 (Grade 9)**
  - April 14, 15, and/or 16, 2020, primary day(s)
  - April 28, 2020, makeup day
  - April 14-28, 2020, accommodated testing window

[www.isbe.net/Documents/SAT-PSAT-Dates-2019-20.pdf](http://www.isbe.net/Documents/SAT-PSAT-Dates-2019-20.pdf)



# WIDA / ACCESS



# ACCESS Preliminary Data Review

Preliminary 2019 ACCESS & Alternate ACCESS results will be posted in SIS on May 6, 2019.

Please, plan to review your data to find and fix common errors by May 24, 2019.

- Unassigned Records
- Missing EL Data
- Multiple or Unmerged Records
- Grade Level Discrepancies







# ACCESS for ELLs

## Score Interpretation Resources

2018-19 score report resources are now posted on the WIDA website, including:

- ACCESS for ELLs and Alternate ACCESS for ELLs [Interpretive Guide for Score Reports](#)
- [Individual Student Score Notes](#) template
- [PowerPoint](#) for talking with parents and families
- [Lesson Plans](#) for talking with students about ACCESS testing and results
- An [infographic for educators](#) showing how to analyze ACCESS scores, communicate results, collaborate with colleagues, and take action.





# Resources for WIDA MODEL

WIDA is sharing three resources to support the use of WIDA MODEL as an interim assessment:

- [WIDA MODEL Interpretive Guide for Score Reports](#)
- WIDA MODEL and ACCESS for ELLs: Examining the Relationship Between Student Scores on Two Assessments
- Comparing Scores on WIDA MODEL to Scores on ACCESS for ELLs





# WIDA Website Feedback Survey

The new public website (<https://wida.wisc.edu/>) is eight months old. WIDA wants to know how well it's working.

[Survey](#) – 5 to 10 minutes.





# ACCESS for ELLs Q&A Webinars

## WIDA webinars in April

- Interpreting Score Reports on April 17  
11:00am-12:00pm CT. Score reports delivered by August 1, 2019. [Login Link](#)

- ~~– Data Validation in WIDA AMS on April 23  
11:00am-12:00pm CT Please, disregard.~~

*Illinois uses SIS for this process, not WIDA AMS.*



# Schools Needed for Kindergarten Screener Field Test

WIDA is looking for schools to field test the new [Kindergarten Screener](#) to at least 20 students.

- Field Test Window 1: July 29, 2019 through Oct. 4, 2019: Incoming Kindergarten and first graders
- Field Test Window 2: Jan. 6, 2020 through Feb. 28, 2020: Currently enrolled Kindergarten students
- Paper only
- WIDA will provide all materials
- Katie Stenz, [kstenz@wisc.edu](mailto:kstenz@wisc.edu), 608-263-4444



# Summer Writing Academy

*Writing with Multilingual Learners in the Elementary Grades Academy*

– June 18-19, 2019

– in Rosemont, Illinois

[Details and registration](#) are on the WIDA website.



# Summer Administrator Academy

*Leading Schools for Multilingual  
Learner Achievement*

— June 25-27, 2019

— in St. Louis, MO.

[Details and registration](#) are on the WIDA website.



# 2018-19 ACCESS for ELLs

## Important Websites & Contact Information

- WIDA Secure Portal, [portal.wida.us](https://portal.wida.us),
- WIDA Public Site, [wida.wisc.edu](https://wida.wisc.edu)  
866-276-7735, [help@wida.us](mailto:help@wida.us)
- WIDA AMS, [www.drcedirect.com](https://www.drcedirect.com),  
855-787-9615, [wida@datarecognitioncorp.com](mailto:wida@datarecognitioncorp.com)
- ISBE page for English Learners,  
[www.isbe.net/Pages/English-Learners.aspx](https://www.isbe.net/Pages/English-Learners.aspx)

## ISBE Contacts for ACCESS for ELLs

- Barry Pedersen, [bpederse@isbe.net](mailto:bpederse@isbe.net), 866-317-6034
- Sam Aguirre, [saguirre@isbe.net](mailto:saguirre@isbe.net), 312-814-3850





# Assessment Update Webinar Schedule

Date	Scheduled Time
Friday, April 26, 2019  <i>Note: The webinar scheduled for April 19 has been cancelled.</i>	10 a.m. - 11 a.m.



## Contacts

### ISBE Assessment & Accountability

866-317-6034

[assessment@isbe.net](mailto:assessment@isbe.net)

[www.isbe.net/Pages/Assessment.aspx](http://www.isbe.net/Pages/Assessment.aspx)

#### Pearson (IAR Assistance)

- Phone: 833-213-3879
- Web: <https://il.mypearsonsupport.com/>

#### SIS Helpdesk

- Phone: 217-558-3600 (option 3)
- Web: [www.isbe.net/Pages/Student-Information-System.aspx](http://www.isbe.net/Pages/Student-Information-System.aspx)

#### Data Recognition Corporation (DRC) (ACCESS for ELLs Assistance)

- Phone: 855-787-9615
- Email: [wida@datarecognitioncorp.com](mailto:wida@datarecognitioncorp.com)

#### College Board (SAT/PSAT Assistance)

- Phone: 844-688-9995
- Email: [ilsat@collegeboard.org](mailto:ilsat@collegeboard.org)

#### DLM-AA Support Center

- Phone: 855-277-9751
- Email: [DLM-support@ku.edu](mailto:DLM-support@ku.edu)

#### Learning Technology Center (LTC)

- Web: [ltcillinois.org](http://ltcillinois.org)
- Email: [support@ltcillinois.org](mailto:support@ltcillinois.org)

#### Join our Listservs!

- Assessment Listserv: Send a blank email with "SUBSCRIBE" in the subject line to [assessment@isbe.net](mailto:assessment@isbe.net).
- Technology Point-of-Contact Listserv: Send a blank email with "SUBSCRIBE" in the subject line to [egrauke@isbe.net](mailto:egrauke@isbe.net).