

ISBE School Nutrition Programs Update

Wednesday, April 2, 2025

On the Calendar



- **April:** National Grilled Cheese Month, Recipe Highlight: [Tuscan Grilled Cheese Sandwich](#)
- **April:** National Garden Month, Resource Highlight: [Food Safety Tips for School Gardens](#) (USDA)
- **April 3:** National Burrito Day, Recipe Highlight: [Chicken Burrito](#)
- **April 7-9:** [ISBE School Wellness Conference](#)
- **April 8:** [ICN Virtual Instructor-Led Training: "How Adults Learn"](#)
- **April 10:** [Submit March claims by the 10th of the month](#)
- **April 15:** [DOD Fresh Free for All begins](#)
- **April 17:** [ICN Virtual Instructor-Led Training: "Delivering Effective Trainings"](#)
- **April 29:** [Last day to submit February claims \(60 days\)](#)

On the Calendar

Food Distribution Program



- DOD Fresh Free for All begins April 15
 - FFAVORS will remain open for orders until all SY 24-25 funds expended or until June 30, 2025
 - DOD can also be used for SFSP or SSO
 - Questions? Call (217) 782-2491 or email pawillia@isbe.net

On the Calendar

- **May:** National Salsa Month, Recipe Highlight: [Garden Salsa](#)
- **May 2:** [School Lunch Hero Day](#)
- **May 7:** [ISBE SNP Update webinar](#)
- **May 10:** [Submit claims in WINS](#)
- **May 26:** Memorial Day (ISBE offices closed)
- **June:** National Fresh Fruit and Vegetables Month, Recipe Highlight: [Vegetarian Roasted Vegetable Tostadas](#)
- **June 19:** Juneteenth (ISBE offices closed)
- **July 4:** Independence Day (ISBE offices closed)



On the Calendar

Upcoming Announcements



- NSLP Equipment Grants
 - Scoring complete, awaiting final approvals before we can announce grant awardees
- Fresh Fruit and Vegetable Program
 - Application period to open soon

What's New? www.isbe.net/nutrition

ISBE School Nutrition Programs Updates



- 2-3 p.m. Wednesday, May 7
- Register online:

<https://register.gotowebinar.com/rt/5845845379050237016>

- Recordings and PDFs of the slides Available on the [SNP Training and Professional Standards webpage](#)

What's New? www.isbe.net/nutrition

FY 2026 School Breakfast Program Expansion Grant

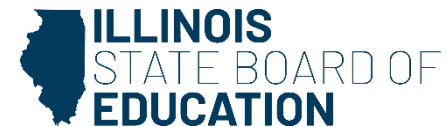
- Check [qualifying schools](#)
- Review the [NOFO/RFP](#)
- Complete the [application](#)
- **Submit** the application no later than
4 p.m. May 8, 2025



What's New? www.isbe.net/nutrition

The screenshot shows the USDA Food Safety and Inspection Service (FSIS) website. The browser address bar displays fsis.usda.gov/recalls. The page header includes the USDA logo, "Food Safety and Inspection Service", and "U.S. DEPARTMENT OF AGRICULTURE". Navigation links include "ABOUT FSIS", "CONTACT US", "CAREERS", "NEWS & EVENTS", and "EMPLOYEES". A secondary navigation bar features "FOOD SAFETY", "SCIENCE & DATA", "POLICY", "INSPECTION", "RECALLS", "SEARCH", and "FULL MENU". A yellow alert banner at the top reads: "ALERT: FSIS Issues Public Health Alert for... See more details". The main content area has a background image of food being cooked with the text "Recalls & Public Health Alerts". On the left, an "Advanced Search" section includes a search bar with the placeholder "Start typing here...", a "Search" button, and a "Filter Results" section with the text "SELECT TO NARROW SEARCH RESULTS". On the right, a public health alert is displayed with the following details: "PHA-03312025-01", "PUBLIC HEALTH ALERT", "PRODUCED WITHOUT BENEFIT OF INSPECTION", "ACTIVE", "MON, 03/31/2025 - CURRENT", and "IDAHO, OREGON, WASHINGTON". The alert title is "FSIS Issues Public Health Alert for White Chicken Chili Imported Without the Benefit of Import Reinspection". The text below the title states: "WASHINGTON, March 31, 2025 – The U.S. Department of Agriculture's Food Safety and Inspection Service (FSIS) is issuing a public health alert for a ready-to-eat (RTE) white chicken chili imported from Canada that did not receive the benefit of import reinspection."

- www.fsis.usda.gov/recalls



What's New?

Spring 2025 ICN Virtual Instructor-Led Trainings

- "How Adults Learn,"
9-10:30 a.m. April 8
- "Delivering Effective Trainings,"
1-2 p.m. April 17
- Register at <https://theicn.org/info/vilt/>



What's New?

Get The Outlook

- Latest issue posted at www.isbe.net/nutrition
- Keep your WINS contacts up-to-date
- Subscribe at www.isbe.net/subscribe

cnp@isbe.net



Summer Meals


- SNP sponsors required to notify families about the Summer Meals
- Materials include flyers, a poster, yard sign, postcard, and social media graphics in English and Spanish.
- Be sure to document your outreach efforts each school year



<https://www.isbe.net/Pages/Summer-Food-Service-Program.aspx>

SUN Meals To-Go



- [Fact Sheet](#)
- [Introduction to Non-Congregate Meals](#) 
- [Operating Rural Non-Congregate Meal Service 2025](#) 
- [USDA SUN Meals To-Go Webpage](#)
- [Rural Designation Tool](#)
- Questions? Email summermeals@isbe.net

<https://www.isbe.net/Pages/Summer-Food-Service-Program.aspx>

What's New?



ISBE School Wellness Conference

- **WHEN:** April 7-9
- **WHERE:** Bloomington-Normal Marriott Hotel & Conference Center
- **WHO:** School nutrition professionals, school nurses, counselors, administrators and more
- [Register today online!](https://www.isbe.net/Pages/School-Wellness-Conference.aspx)

What's New?



HMI Recognition Awards

- **Healthy Meals Incentives Recognition Awards**

<https://healthymealsincentives.org/recognition-awards/>

Award Categories

- Breakfast Trailblazer
- Small and/or Rural SFA Breakfast Trailblazer
- Lunch Trailblazer
- Small and/or Rural SFA Lunch Trailblazer
- Innovative School Lunch Makeover
- Innovation in the Cultural Diversity of School Meals
- Innovation in the Preparation of School Meals
- Innovation in Nutrition Education





Spring Checklist

WINS

- Manage Your Program Application Year-round!
 - Food Service Director
 - Participation Detail
 - Meal Time (begin and end time)
 - Meal Dates
- The program year 2026 (SY25-26) WINS application will be released soon. Please complete before you leave for the summer.
 - New information will be requested around financial management.

Meal Counting

- Point of Service Counts are required for ALL federal reimbursed meal services!
 - If you have an electronic POS, please utilize the software as required by your local vendor.
 - This ensures one meal per student per meal service per school day.
- Under SNP, federal meals are reimbursed by the enrolling school.
 - For public schools, this is based on the Student Information System (SIS) serving school.

Outstanding School Food Service Balances

**Local Policy on
Outstanding School
Food Service
Balances**

**Illinois State Law:
Hunger-Free
Students' Bill of
Rights Act**

**Local Level
Implementation
and Enforcement**

- **USDA Guidance Information:** <https://www.fns.usda.gov/cn/unpaid-meal-charges>
- **Public Act 100-1092(August 26, 2018):**
(<https://ilga.gov/legislation/publicacts/100/PDF/100-1092.pdf>)

Other Spring Checklist Items

Ensure Food Service Professionals standards have been met and track professional standards training hours for all staff.

Check out the Financial Management Resources for guidance on the maintenance of the nonprofit school food service account, meal pricing requirements, paid lunch equity, revenue from nonprogram foods and indirect costs.

Ensure you are familiar with all meal pattern requirements, including the product-based sugar limits that begin on July 1, 2025. (Breakfast Cereals, Yogurt and Flavored Milk)

Ensure that ALL program paperwork is maintained at the local level based on the required record retention policy.

SNP Resource Management: <https://www.isbe.net/Pages/Nutrition-Resource-Management.aspx>

Meal Pattern updates for SY25-26: <https://www.isbe.net/Documents/Meal-Patterns012125.pdf>

Summer Program Requirements

Ensuring meal program access in the summertime is a program requirement for all SNP sponsors. Provide information to your local community about options annually.

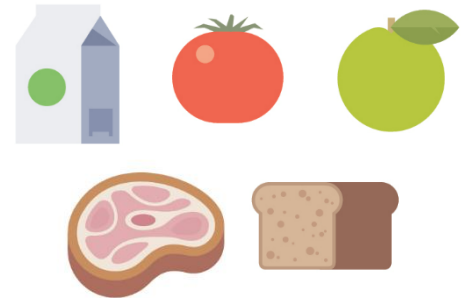
If your school plans to operate a summer feeding program (SFSP or SSO), please ensure that you have the program application completed prior to operation.

Determine if non-congregate summer meals may be an option for your school, and ensure you have the non congregate paperwork approved prior to operation. The school must meet USDA requirements to qualify for this option.

Public Act 96-0734, which amends Public Act 095-0155, requires school districts that have a summer school program operating during the summer months in a school where 50 percent or more of the students are eligible for free or reduced-price school meals must serve breakfast and/or lunch at each school(s) that meets the criteria above. Schools must serve the meals to the children in their summer school program along with opening their doors to the community. Schools may utilize either the National School Lunch Program's Seamless Summer Option (SSO) or the Summer Food Service Program (SFSP) to help meet these requirements.

https://www.isbe.net/Documents/sfsp_pa96-0734_qa.pdf

Farm to School Update



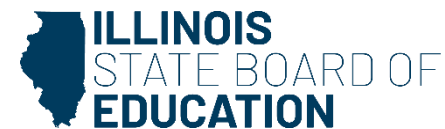
Farm to Child Nutrition Programs

- **Local Food for Schools** funding currently goes through Jan. 31, 2026!
- To sign up:
 - Watch the recorded training module:
https://www.youtube.com/watch?v=6V_foXifhlo
 - Email: localfoods@isbe.net
(Include district/school name, RCDT, and acknowledge you have viewed the recording)



We do want to acknowledge that we did receive a notification from the USDA that a 2nd round of local foods funding that was set to start after LFS concluded, called the Local Food for Schools and Child Care (LFSCC) was terminated.

However, we do still have LFS funds through January 31st and we want schools to continue to utilize this wonderful program!



Farm to Child Nutrition Programs

- Additional LFS funding available

Requesting Additional LFS Funds

School Food Authorities (SFAs) that have signed up for Local Food for Schools (LFS) and have used up their LFS allotment and would like to request additional funds, ISBE will do our best to approve requests for additional funds. Please see the guidelines and instructions for submitting a request.

Guidelines for submitting a request for additional funds


- Only request funds that you know you will spend in the next 30-90 days (limited exceptions will be made & please include an explanation in your request).
- SFAs can submit multiple requests during the LFS funding period, SFAs are not limited to just 1 or 2 requests for additional funds.
- Submit requests with at least 5 business days of advanced notice.
- We cannot guarantee additional fund requests will be approved. Therefore, it is not recommended to purchase additional local foods until you receive an official approval to your request from ISBE. The SFA would be responsible for any purchases made that exceed the ISBE approved allotment.
- Purchases made with additional LFS funds must remain in compliance with all applicable LFS requirements.

Instructions for submitting a request for additional funds

- Submit an email to localfoods@isbe.net that contains the following information:
 - Name of the SFA (sponsor name – ex. school district, school, Church, RCCI sponsor, Juvenile Detention Center)
 - RCDT/Agreement Number – 11-digit number for your SFA (this number can be found in the WINS system at the top of your home page)
 - Dollar amount you would like to request
 - If the funds are not going to be used in the next 30-90 days provide an explanation of the scenario.

After submitting a request for additional funds

- ISBE staff will review and approve or deny request as quickly as possible. Please allow up to 5 business days for a response.
- ISBE staff will notify the requester in writing of the approval or denial of the request.
- Once approved, the SFA may move forward with their LFS purchase.



– Instructions to request more:

<https://www.isbe.net/Documents/Requesting-Additional-LFS-Funds.pdf>

Did you know that LFS funds can be used for Seamless Summer Option (SSO) meals?



SSO = Yes to LFS

SFSP = No to LFS

<https://www.isbe.net/Documents/SSO-SFSP-comparison.pdf>

USDA 2023 Farm to School Census Results

Farm to school participation in Illinois

Illinois Nationally
64% of SFAs **74%**
did at least one
farm to school activity

These SFAs included **2,006** schools
and **865,424** students



Top Local Products

Top local products served in schools nationally

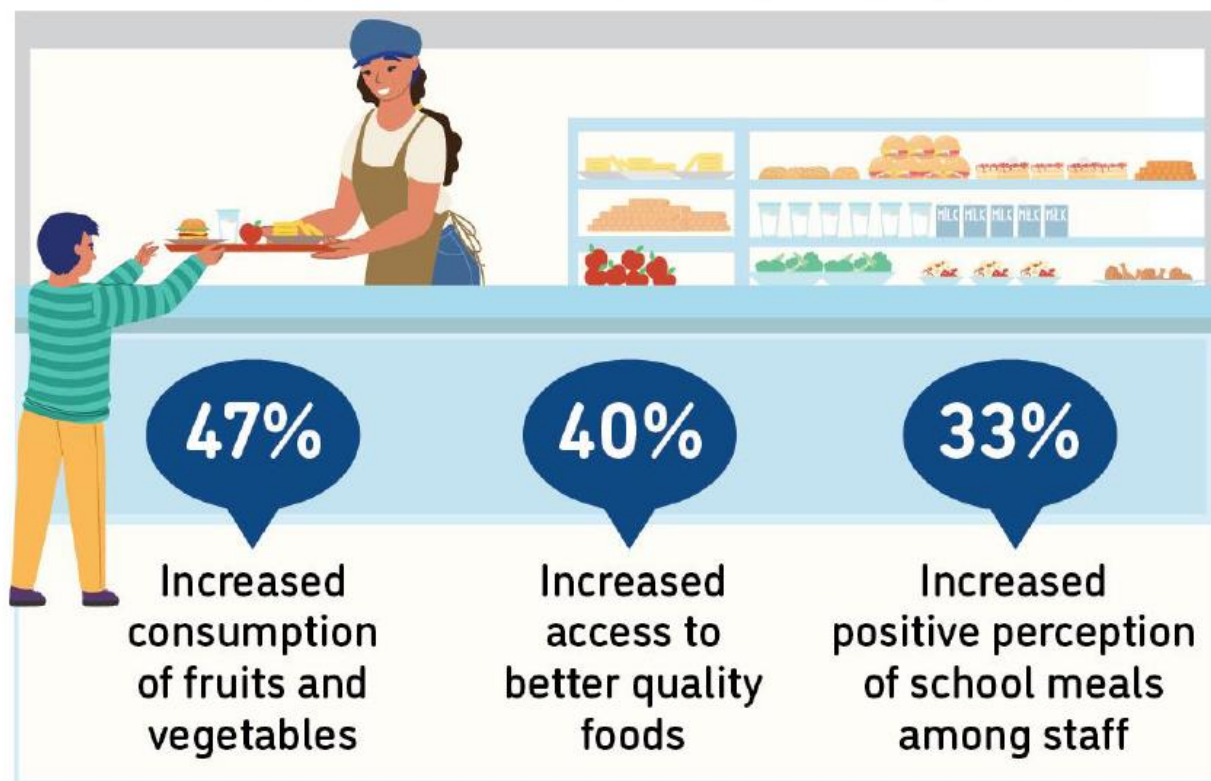


Top local products served in Illinois schools



USDA F2S Census - Illinois

Positive outcomes of SFAs from farm to school participation



Great Job Illinois!

	Illinois	Midwest	National
Response Rate	78.6%	69.1%	66.3%
SFAs that participate in F2S	63.8%	62%	74.1%
Students reached by F2S programming	74.8%	72.8%	88.6%



Scratch/Speed-Scratch Online Training

- Tomorrow – April 3rd
- 2:00- 3:00 CT
- ICN (Institute of Child Nutrition)

**TO REGISTER
SCAN ME**



WEBINAR

SETTING UP YOUR KITCHEN

for Scratch and
Speed-Scratch Success

Thursday
April 3, 2025

- 3:00 pm (ET) 2:00 pm (CT)
1:00 pm (MT) 12:00 pm (PT)

National School Breakfast Week

- March 3-7



cnp@isbe.net

Cobden Unit School District



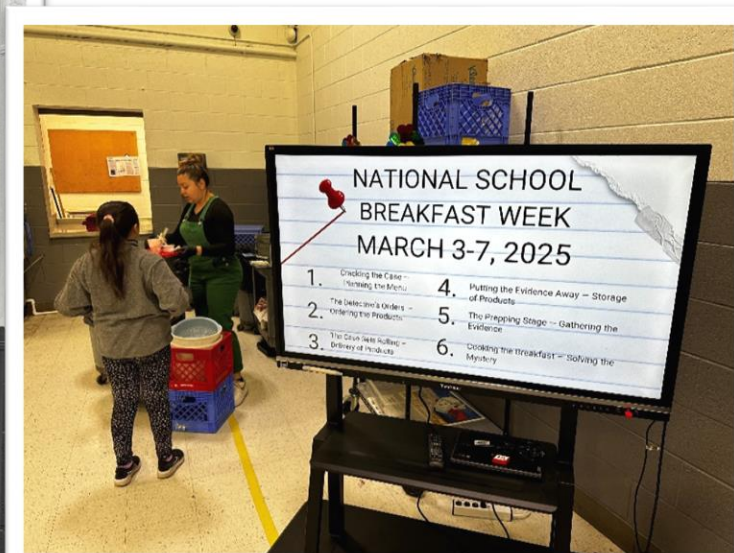
Cobden Unit School District



Cobden Unit School District

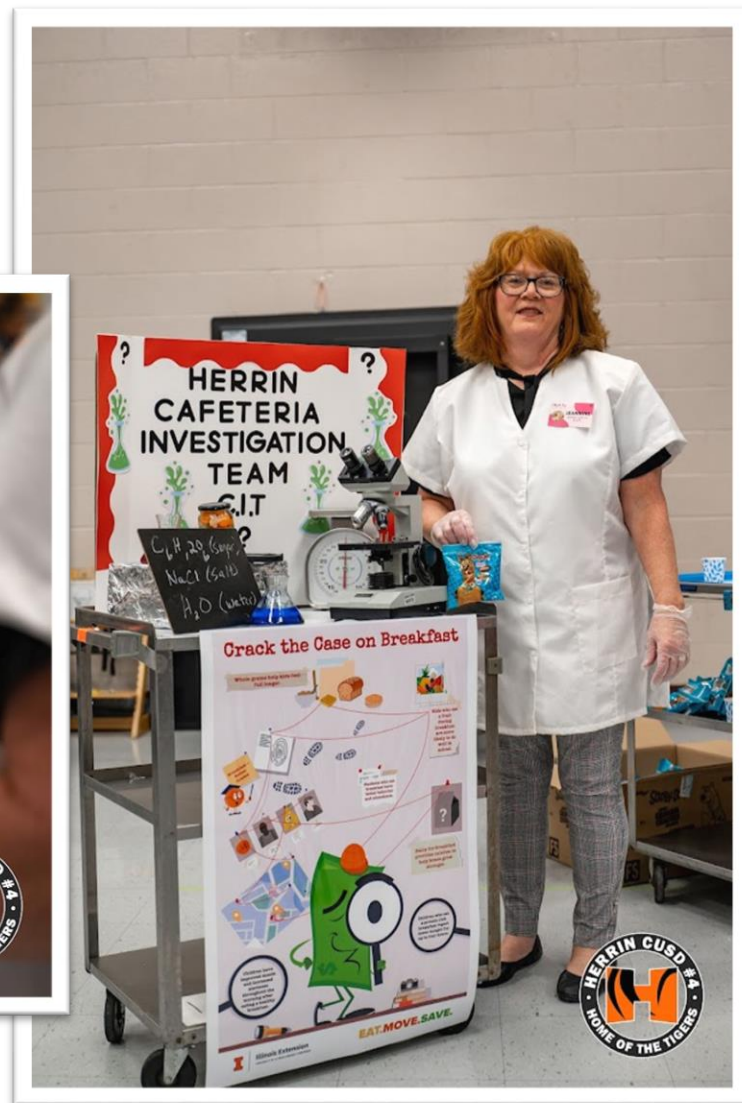


Cobden Unit School District

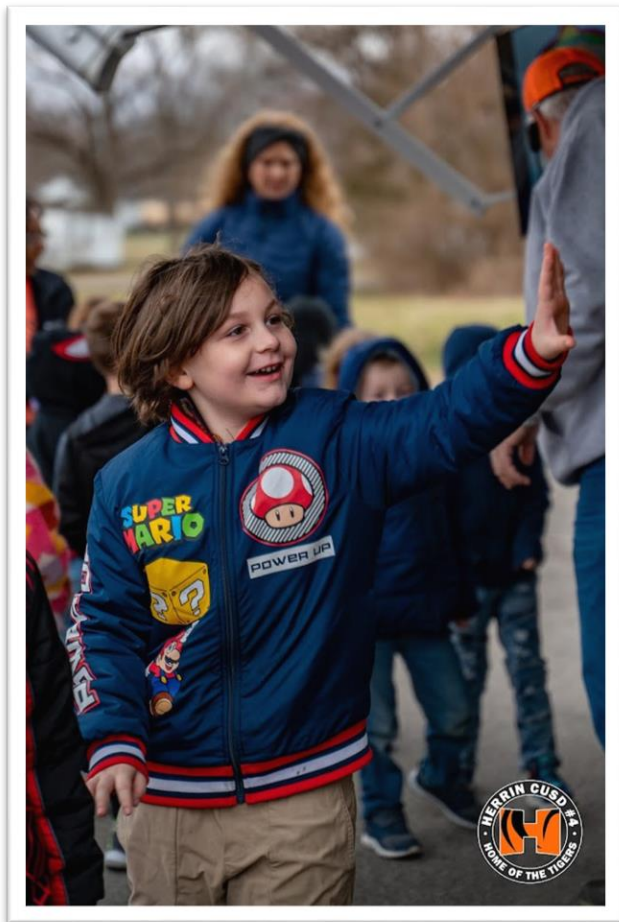


- 2025 National School Lunch Week, Oct. 13-17, 2025, ["Taste the World: Your School Lunch Passport"](#)
- 2026 National School Breakfast Week, March 2-6, 2026, ["The Quest for School Breakfast!"](#)

Herrin CUSD 4

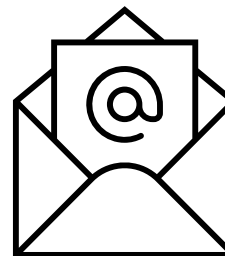


Herrin CUSD 4



Questions?

Email cnp@isbe.net



Call (800) 545-7892
(toll free in Illinois)
or (217) 782-2491

