

# **Pupil Transportation Claim Presentation May 2026**

---

# Agenda

- Home Page
- Depreciation Schedule
- Pupil Head Count
- Mileage
- Expenditures & Deductions
- Resources
- Contact Information

# Home Page

## FY 2020 : School Year 2018-2019

Claim Status: draft - NOT submitted to ISBE - [Revision# 0 Last Modified on: 5/8/2019]

Claim Statutory Due Date is 8/15/2019

If Pupil Transportation Reimbursement Claim is **not applicable in FY 2020** [Click here](#)

**ATTENTION:** It is to your advantage to review the [School Year 2018-2019 Pupil Transportation Reimbursement Claim Instructions](#)

### 1. Depreciation Schedule

- [Add Assets](#)
- [Modify / Delete Assets](#)
- [Calculate Depreciation Allowance](#)

### 3. Reimbursement Claim

- [CLICK HERE BEFORE the Pupil Head Count link to enter necessary data on the Resident Pupils Transported Worksheet and the Regular Pupil Transportation Reimbursable Field Trips Worksheet. Then ... Pupil Head Count](#)
- [CLICK HERE BEFORE the Mileage link to take advantage of the Mileage and Cost Allocation Worksheet to automatically calculate the allocation of expenditures based on miles traveled in each category. Then ... Mileage](#)
- [Expenditures & Deductions](#)
- [Claim Review & Submit](#)
- [Computation Summary](#)
- [Current FY History](#)

### 2. Worksheets & Help Documents

- [Worksheets](#)
- [Help Documents](#)

### 4. History & Data Analysis Tools

- [Archived Claims](#)
- [Reimbursement Estimation Tool](#)
- [Reports](#)

RCDT Admin : LCrum

[Close PTCRS](#)

# Depreciation Schedule (1 of 6)

- The Depreciation Schedule is for all assets that have a principal cost/fair market value of \$2,500 or more and a useful life of one year or more. Review your Depreciation Schedule to determine if any assets need to be removed/added. This can also be done during the school year while the information is fresh in mind.

# Depreciation Schedule (2 of 6)

- Adding New Assets

**TRANSPORTATION ASSETS**  
Item Details

|   |   |
|---|---|
| Sequence Number*  | <input type="text"/>  |
| Asset Type*   | --- Please select type of asset ---   |
| Description*  | <input type="text"/>  |
| Details   | <input type="text"/>  |
| Date Acquired*  | 05/08/2019  |
| Ownership*  | --- Please select type of ownership ---   |
| Principal Cost / Market Value*  | 0 (excluding interest & finance charges)  |
| Useful Life / Lease Period  | 0 Years   |
| Annual Rate of Depreciation   | 0   |
| Total Lease Amount<br>(annual lease paymt * number of years of lease) | 0 (excluding interest & finance charges)  |
| Vehicle Type  | --- Please select type of vehicle (required for asset type of vehicle) ---<br><small>NOTE: Vehicle Type C: only includes first division vehicles designed to carry not more than 10 persons total including the driver.</small> |
| Vehicle Registration Number   | <input type="text"/>  |
| Vehicle Seating Capacity  | 0   |

\* Data must be entered.

# Depreciation Schedule (3 of 6)

- Modify/Delete Assets

## TRANSPORTATION ASSETS SUMMARY

Please click on the Sequence Number of the asset you want to modify or delete.  
 (NOTE: delete an asset ONLY if it is not in your possession).

| Sequence Number    | Ownership                        | Description                           | Principal Cost (\$) |
|--------------------|----------------------------------|---------------------------------------|---------------------|
| <a href="#">18</a> | Purchased                        | 1985 international bus #8 (Disposed)  | 29,371              |
| <a href="#">21</a> | Purchased                        | 1988 FORD BUS #13 (Disposed)          | 27,980              |
| <a href="#">22</a> | Purchased                        | 1988 FORD BUS #11 (Disposed)          | 27,980              |
| <a href="#">25</a> | Purchased                        | 1991 INTERNATIONAL BUS #4 (Disposed)  | 32,452              |
| <a href="#">45</a> | Purchased                        | 1998 Ford Van (Disposed)              | 13,624              |
| <a href="#">48</a> | Mult. Year Lease/Lease Purchased | 2002 INTERNATIONAL #14 (Disposed)     | 56,330              |
| <a href="#">49</a> | Mult. Year Lease/Lease Purchased | 2002 FORD BUS #1 (Disposed)           | 45,490              |
| <a href="#">50</a> | Mult. Year Lease/Lease Purchased | 2002 INTERNATIONAL BUS (Disposed)     | 53,540              |
| <a href="#">51</a> | Mult. Year Lease/Lease Purchased | 2002 INTERNATIONAL BUS #2 (Disposed)  | 52,600              |
| <a href="#">52</a> | Mult. Year Lease/Lease Purchased | 2002 INTERNATIONAL BUS #5 (Disposed)  | 52,020              |
| <a href="#">53</a> | Mult. Year Lease/Lease Purchased | 2002 INTERNATIONAL. BUS #6 (Disposed) | 52,600              |
| <a href="#">54</a> | Mult. Year Lease/Lease Purchased | 2002 INTERNATIONAL BUS #3 (Disposed)  | 52,600              |
| <a href="#">55</a> | Mult. Year Lease/Lease Purchased | 2002 INTERNATIONAL BUS #9 (Disposed)  | 52,020              |
| <a href="#">56</a> | Mult. Year Lease/Lease Purchased | 2002 INTERNATIONAL BUS #10 (Disposed) | 52,180              |
| <a href="#">57</a> | Mult. Year Lease/Lease Purchased | 2002 INTERNATIONAL BUS #12 (Disposed) | 52,180              |
| <a href="#">58</a> | Mult. Year Lease/Lease Purchased | 2002 INTERNATIONAL BUS #15 (Disposed) | 52,180              |
| <a href="#">59</a> | Mult. Year Lease/Lease Purchased | 2003 International Bus (Disposed)     | 59,255              |
| <a href="#">59</a> | Mult. Year Lease/Lease Purchased | #14 Bluebird School Bus (Disposed)    | 56,406              |
| <a href="#">60</a> | Mult. Year Lease/Lease Purchased | 2003 FORD BUS (Disposed)              | 45,490              |
| <a href="#">60</a> | Mult. Year Lease/Lease Purchased | #1 Blue Bird School Bus (Disposed)    | 51,695              |
| <a href="#">61</a> | Mult. Year Lease/Lease Purchased | 2003 INTERNATIONAL BUS (Disposed)     | 55,600              |

# Depreciation Schedule (4 of 6)

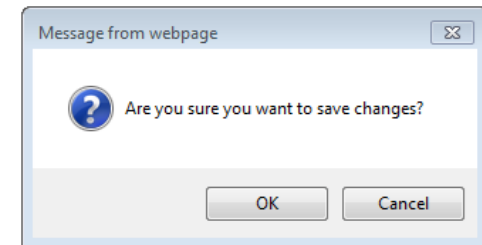
- Modify/Delete Assets

**TRANSPORTATION ASSETS**  
Item Details

|   |  |
|---|--|
| Sequence Number*  | <input type="text" value="114"/>   |
| Asset Type*   | V - Vehicles (Student Transportation) ▼  |
| Description*  | 2018 Micro Bird Bus #1   |
| Details   | <input type="text"/>   |
| Date Acquired*  | <input type="text" value="06/29/2018"/>  |
| Ownership*  | Multiple Year Lease / Lease Purchased ▼  |
| Principal Cost / Market Value*  | <input type="text" value="61041"/> (excluding interest & finance charges)  |
| Useful Life / Lease Period  | <input type="text" value="3"/> Years   |
| Annual Rate of Depreciation   | <input type="text" value="0.2"/>   |
| Total Lease Amount<br>(annual lease paymt * number of years of lease) | <input type="text" value="25873"/> (excluding interest & finance charges)  |
| Vehicle Type  | Y - Yellow School Bus ▼<br><small>NOTE: Vehicle Type C: only includes first division vehicles designed to carry not more than 10 persons total including the driver.</small> |
| Vehicle Registration Number   | <input type="text" value="1HA6GUBG4JN001076"/>   |
| Vehicle Seating Capacity  | <input type="text" value="29"/>  |

\* Data must be entered.

(NOTE: delete an asset ONLY if it is not in your possession. You will be asked to confirm today as the deletion date in a POPUP box).



# Depreciation Schedule (5 of 6)

- Calculating Depreciation Allowance

## CALCULATE DEPRECIATION ALLOWANCE - PAGE 1

FY 2020 : School Year 2018-2019

Claim Status: draft - NOT submitted to ISBE - [Revision: 0 Last Modified on: 5/8/2019]

All assets on the depreciation schedule must be updated annually, even if an asset is fully depreciated, in order for PTCRS to carry the data forward each year until the asset is disposed. Click on each **Sequence Number** with an asterisk indicator, then on the **next page** make any changes applicable and click the **Update button**.

| Depreciation Schedule Summary |                                |                            |                           |
|-------------------------------|--------------------------------|----------------------------|---------------------------|
| Sequence Number               | Item Description               | Depreciation Allowance(\$) | Undepreciated Balance(\$) |
| <a href="#">23</a> *          | Bus Garage                     | 0.00                       | 0.00                      |
| <a href="#">27</a> *          | Two Way Radio Tower            | 0.00                       | 0.00                      |
| <a href="#">35</a> *          | Lincoln Grease Gun             | 0.00                       | 0.00                      |
| <a href="#">37</a> *          | TR3 Sony Video Camera          | 0.00                       | 0.00                      |
| <a href="#">38</a> *          | Fuel Storage Tank              | 0.00                       | 0.00                      |
| <a href="#">45</a> *          | Sony Camera                    | 0.00                       | 0.00                      |
| <a href="#">47</a> *          | CRM Audio/Video Camera         | 0.00                       | 0.00                      |
| <a href="#">50</a> *          | High Pressure Washer           | 0.00                       | 0.00                      |
| <a href="#">51</a> *          | 1999 Chevrolet Suburban, White | 0.00                       | 0.00                      |
| <a href="#">54</a> *          | Bus #3                         | 0.00                       | 0.00                      |
| <a href="#">57</a> *          | 1998 Ford F150/Maroon          | 0.00                       | 0.00                      |
| <a href="#">58</a> *          | Bus #11                        | 0.00                       | 0.00                      |
| <a href="#">59</a> *          | Bus #14                        | 0.00                       | 0.00                      |
| <a href="#">60</a> *          | Bus #7                         | 0.00                       | 0.00                      |
| <a href="#">63</a> *          | Bus # 1                        | 0.00                       | 0.00                      |
| <a href="#">65</a> *          | 2007 Blue Bird                 | 0.00                       | 0.00                      |
| <a href="#">66</a> *          | 2006 Chevrolet Suburban, White | 0.00                       | 0.00                      |
| <a href="#">68</a> *          | Freightliner                   | 0.00                       | 0.00                      |
| <a href="#">69</a> *          | 2010 Freightliner Bus # 8      | 0.00                       | 0.00                      |
| <a href="#">70</a> *          | 2009 Chevrolet Activity Van    | 0.00                       | 0.00                      |
| <a href="#">71</a> *          | 2011 Thomas                    | 0.00                       | 0.00                      |
| <a href="#">75</a> *          | Repair brake system on bus # 6 | 0.00                       | 0.00                      |
| <a href="#">76</a> *          | Service                        | 0.00                       | 0.00                      |
| <a href="#">77</a> *          | 2017 International             | 0.00                       | 0.00                      |

# Depreciation Schedule (6 of 6)

## • Calculating Depreciation Allowance

### CALCULATE DEPRECIATION ALLOWANCE - PAGE 2 FY 2024 : School Year 2022-2023

#### Asset Details for Current Year Depreciation

|  |                                    |
|--|------------------------------------|
| Sequence Number  | 0233                               |
| Description  | <b>2021 IC CE 71 CRS</b>           |
| Asset Type   | Vehicles (Student Transportation)  |
| Vehicle Type (if applicable)   | Yellow School Bus                  |
| Ownership  | Mult. Year Lease / Lease Purchased |
| Date Acquired  | 7/1/2020                           |
| Principal Cost / Market Value (excluding interest & finance charges) | \$89000                            |
| Total Lease Amount (annual lease payment * number of years of lease) | \$40863                            |
| Annual Rate of Depreciation  | 0.2                                |
| Useful Life / Lease Period   | 3 years                            |
| Registration Number  | 4drbuc8p1mb161091                  |
| Seating Capacity   | 71                                 |
| Details  |                                    |

#### Current Year Depreciation

Principal Cost / Market Value

Accumulated Prior Year(s) Depreciation\*

Current Fiscal Year Lease Payment (exclude interest & finance charges)\*

Current Year Depreciation Allowance\*

#### Claimed Amount (\$)

|       |
|-------|
| 89000 |
| 26782 |
| 0     |
| 14081 |
| 40863 |
| 48137 |

Accumulated Depreciation Through the Fiscal Year Being Claimed

Undepreciated Balance

\* Indicates data must be entered.

#### Prior Year(s) Depreciation Allowance (READ-ONLY)

|  |                                    |
|--|------------------------------------|
| School Year Ending   | <b>2022</b>                        |
| Ownership  | Mult. Year Lease / Lease Purchased |
| Date Acquired  | 7/1/2020                           |
| Principal Cost / Market Value  | 89000                              |
| Total Lease Amount (annual lease payment * number of years of lease) | 40863                              |
| Annual Rate of Depreciation  | 0.2                                |
| Useful Life / Lease Period   | 3 years                            |
| Lease Payment  | 13161                              |
| Prior Year Accumulated Depreciation                                  | 13621                              |
| Depreciation Allowance   | 13161                              |
| Accumulated Depreciation Through the Fiscal Year Being Claimed       | 26782                              |
| Undepreciated Balance  | 62218                              |

# Pupil Head Count

## STUDENT HEAD COUNT

FY 2020 : School Year 2018-2019

Claim Status: draft - NOT submitted to ISBE - [Revision# 0 Last Modified on: 5/8/2019]

**ATTENTION:** The Resident Students Transported Work Sheet or a similar district-designed database containing the same information must be completed BEFORE Lines 1, 2, 3, and 5 are entered. The Regular Student Transportation Reimbursable Field Trips Worksheet must be completed BEFORE Line 4 is entered.

**NEW!** [Click here for the Resident Students Transported Worksheet and the Regular Student Transportation Reimbursable Field Trips Worksheet.](#)

### Regular Education Student Transportation (Regular School Term ONLY)

|           |   | Current Year<br>Entry | Last Year<br>View |
|-----------|---|-----------------------|-------------------|
| <b>1</b>  | <b>K-12 Public Regular Education Students Enrolled for Transportation - Regular Route</b>                                   |                       |                   |
| <b>1a</b> | residing 1.5 miles or more from school  | 0                     | 323               |
| <b>1b</b> | residing less than 1.5 miles from school <i>WITHOUT</i> an approved vehicular and/or a criminal gang activity safety hazard | 0                     | 12                |
| <b>1c</b> | residing less than 1.5 miles from school <i>WITH</i> an approved vehicular safety hazard                                    | 0                     | 98                |
| <b>1d</b> | residing less than 1.5 miles from school <i>WITH</i> an approved criminal gang activity safety hazard                       | 0                     | 0                 |
| <b>1e</b> | total number of public school K-12 regular education students enrolled on a regular route                                   | 0                     | 433               |
| <b>2</b>  | <b>K-12 Non-Public Regular Education Students Enrolled for Transportation - Regular Route</b>                               |                       |                   |
| <b>2a</b> | residing 1.5 miles or more from school  | 0                     | 0                 |
| <b>2b</b> | residing less than 1.5 miles from school <i>WITHOUT</i> an approved vehicular and/or a criminal gang activity safety hazard | 0                     | 0                 |
| <b>2c</b> | residing less than 1.5 miles from school <i>WITH</i> an approved vehicular safety hazard                                    | 0                     | 0                 |
| <b>2d</b> | residing less than 1.5 miles from school <i>WITH</i> an approved criminal gang activity safety hazard                       | 0                     | 0                 |
| <b>2e</b> | total number of Non-public school K-12 regular education students enrolled on a regular route                               | 0                     | 0                 |
| <b>3</b>  | <b>PreK Regular Education Students Enrolled for Transportation - Regular Route (NOT on an exclusive PreK Route)</b>         |                       |                   |
| <b>3a</b> | residing 1.5 miles or more from school  | 0                     | 17                |
| <b>3b</b> | residing less than 1.5 miles from school <i>WITHOUT</i> an approved vehicular and/or a criminal gang activity safety hazard | 0                     | 0                 |
| <b>3c</b> | residing less than 1.5 miles from school <i>WITH</i> an approved vehicular safety hazard                                    | 0                     | 7                 |
| <b>3d</b> | residing less than 1.5 miles from school <i>WITH</i> an approved criminal gang activity safety hazard                       | 0                     | 0                 |
| <b>3e</b> | total number of PreK students enrolled for transportation - Regular Route (line 3a + line 3b + line 3c + line 3d)           | 0                     | 24                |
| <b>3f</b> | total number of PreK students enrolled for transportation - Exclusive PreK Route  | 0                     | 0                 |
| <b>3g</b> | total number of PreK students enrolled for transportation - Regular and Exclusive PreK Route (line 3e + line 3f)            | 0                     | 24                |
| <b>4</b>  | <b>Students Transported for Curriculum-Related Field Trips (Not Enrolled on a Regular Route)</b>                            |                       |                   |
| <b>4a</b> | Unduplicated headcount of students transported for Curriculum-Related Field Trips   | 0                     | 67                |
| <b>4b</b> | Total days for students transported for Curriculum-Related Field Trips  | 0                     | 90                |
| <b>4c</b> | Number of Curriculum-Related Field Trips (Line 4b divided by Line 4a) - Verify if value greater than five                   | 0                     |                   |

# Mileage

## MILEAGE DETAILS

FY 2020 : School Year 2018-2019

Claim Status: draft - NOT submitted to ISBE - [Revision# 0 Last Modified on: 5/8/2019]

|   | Current Year                   | Last Year |
|---|--------------------------------|-----------|
| <b>10 Total Regular Education Transportation Miles to and from School</b> |                                |           |
| 10a Total regular route miles   | <input type="text" value="0"/> | 51035     |
| 10b Total regular curriculum-related field trip miles                     | <input type="text" value="0"/> | 1588      |
| <b>11 Total Vocational Transportation Miles to and from School</b>        |                                |           |
| 11a Total vocational route miles  | <input type="text" value="0"/> | 0         |
| 11b Total vocational curriculum-related field trip miles                  | <input type="text" value="0"/> | 0         |
| <b>12 Total Special Education Transportation Miles to and from School</b> |                                |           |
| 12a Total special education route miles                                   | <input type="text" value="0"/> | 16813     |
| 12b Total special education curriculum-related field trip miles           | <input type="text" value="0"/> | 0         |
| <b>13 Total Non-Reimbursable Miles (Regular &amp; Summer Terms)</b>       |                                |           |
| 13a Total non-curriculum-related field trip miles                         | <input type="text" value="0"/> | 36876     |
| 13b Total pre-kindergarten miles  | <input type="text" value="0"/> | 7335      |

[Click here BEFORE continuing on to entering expenses - take advantage of the Mileage and Cost Allocation Worksheet to automatically calculate the allocation of expenditures based on miles traveled in each category.](#)

Hist Id: 103057

# Expenditures and Deductions

## EXPENDITURES and DEDUCTIONS

FY 2020 : School Year 2018-2019

Claim Status: draft - NOT submitted to ISBE - [Revision# 0 Last Modified on: 5/8/2019]

[Click here BEFORE entering expenses below - take advantage of the Mileage and Cost Allocation Worksheet to automatically calculate the allocation of expenditures based on miles traveled in each category.](#)

|  | A<br>Regular<br>Transportation | B<br>Vocational<br>Transportation | C<br>Special Ed.<br>Transportation | D<br>Non-Reimbursable<br>Transportation | E<br>Total |
|--|--------------------------------|-----------------------------------|------------------------------------|---|------------|
| <b>14 Direct Costs - Paid from Fund 40 Transportation</b>  |                                |                                   |                                    |   |            |
| <b>14a</b> Salaries (Full or Part-time)  | 0                              | 0                                 | 0                                  | 0                                       | 0          |
| <b>14b</b> Employee Benefits   | 0                              | 0                                 | 0                                  | 0                                       | 0          |
| <b>14c</b> Purchased Services (Excludes contractual reported on Lines d, e or f)                           | 0                              | 0                                 | 0                                  | 0                                       | 0          |
| <b>14d</b> Contractual Transportation (Excludes contractual with other districts)                          | 0                              | 0                                 | 0                                  | 0                                       | 0          |
| <b>14e</b> Payments to Public Transit Carriers   | 0                              | 0                                 | 0                                  | 0                                       | 0          |
| <b>14f</b> Payments to Other Districts   | 0                              | 0                                 | 0                                  | 0                                       | 0          |
| <b>14g</b> Supplies  | 0                              | 0                                 | 0                                  | 0                                       | 0          |
| <b>14h</b> Other   | 0                              | 0                                 | 0                                  | 0                                       | 0          |
| <b>15 Subtotal Transportation Fund 40 Expenditures</b>   | 0                              | 0                                 | 0                                  | 0                                       | 0          |
| <b>16 Transportation Related Building and Building Maintenance</b>   |                                |                                   |                                    |   |            |
| <b>16a</b> Costs paid from Ed. Fund 10   | 0                              | 0                                 | 0                                  | 0                                       | 0          |
| <b>16b</b> Costs paid from O&M Fund 20   | 0                              | 0                                 | 0                                  | 0                                       | 0          |
| <b>16c</b> Costs paid from Capital Projects Fund 60  | 0                              | 0                                 | 0                                  | 0                                       | 0          |
| <b>17</b> Allowable Depreciation <span style="color: red;">Computed=\$126,438</span>                       | 0                              | 0                                 | 0                                  | 0                                       | 0          |
| <b>18</b> Total Direct Costs (Lines 15-17)   | 0                              | 0                                 | 0                                  | 0                                       | 0          |
| <b>19 Deductions</b>   |                                |                                   |                                    |   |            |
| <b>19a</b> Payments received from other districts  | 0                              | 0                                 | 0                                  | 0                                       | 0          |
| <b>19b</b> Payments received from parents  | 0                              | 0                                 | 0                                  | 0                                       | 0          |
| <b>19c</b> Payments received from other sources  | 0                              | 0                                 | 0                                  | 0                                       | 0          |
| <b>20</b> Total Deductions (Lines 19a-19c)   | 0                              | 0                                 | 0                                  | 0                                       | 0          |
| <b>21</b> Net Direct Costs (Line 18 minus Line 20)   | 0                              | 0                                 | 0                                  | 0                                       | 0          |
| <b>22</b> Indirect Costs 5% - District owned transportation service ((Line 21 - (Lines 14d+14e+14f) * 5%)) | 0                              | 0                                 | 0                                  |   | 0          |
| <b>23</b> Total Transportation Costs (Line 21 + Line 22)   | 0                              | 0                                 | 0                                  | 0                                       | 0          |

Close

Save Data

Hist Id: 103057

# Mileage and Cost Allocation Worksheet

| A | B  | C                                     | D   | E | F | G | H |
|---|--|---------------------------------------|---|---|---|---|---|
| 0 | Fiscal Year  | <u>2026</u>                           | <b>NOTE: THROUGHOUT THE WORKBOOK, YELLOW CELLS ARE USER INPUT CELLS</b> |   |   |   |   |
| 1 | District Name  |                                       |   |   |   |   |   |
| 2 | RCDT#  |                                       |   |   |   |   |   |
| 3 |  |                                       |   |   |   |   |   |
| 4 |  |                                       | <b>Total Expenditures<br/>from June 30, 2026<br/>General Ledger</b>     |   |   |   |   |
| 5 | Fund 40  | Total Salaries                        |   |   |   |   |   |
| 6 | Fund 40  | Total Benefits                        |   |   |   |   |   |
| 7 | Fund 40  | Total Purchased Services              |   |   |   |   |   |
| 8 | Fund 40  | Total Supplies                        |   |   |   |   |   |
| 9 | Fund 40  | Total Capital Outlay                  |   |   |   |   |   |
| 0 | Fund 40  | Total Other                           |   |   |   |   |   |
| 1 | Fund 40  | Total Non-Capitalized Equipment       |   |   |   |   |   |
| 2 | Fund 40  | Total Termination Benefits            |   |   |   |   |   |
| 3 |  | Ledger Total                          | \$  | - |   |   |   |
| 4 |  |                                       |   |   |   |   |   |
| 5 |  |                                       |   |   |   |   |   |
| 6 | <b>ONLY NEED TO FILL OUT THIS SECTION IF YOU ARE USING SUPERINTENDENT AS TRANSPORTATION DIRECTOR</b> |                                       |   |   |   |   |   |
| 7 |  |                                       | <b>Total<br/>Expenditures<br/>from 2025 AFR</b>                         |   |   |   |   |
| 8 | Fund 10  | Educational                           |   |   |   |   |   |
| 9 | Fund 20  | Operations & Maintenance              |   |   |   |   |   |
| 0 | Fund 30  | Debt Services                         |   |   |   |   |   |
| 1 | Fund 40  | Transportation                        |   |   |   |   |   |
| 2 | Fund 50  | Municipal Retirement/ Social Security |   |   |   |   |   |
| 3 | Fund 60  | Capital Projects                      |   |   |   |   |   |
| 4 | Fund 70  | Working Cash                          |   |   |   |   |   |
| 5 | Fund 80  | Tort                                  |   |   |   |   |   |
| 6 | Fund 90  | Fire Prevention & Safety              |   |   |   |   |   |
| 7 |  |                                       | \$  | - |   |   |   |

# Resources

- [PTCRS Instructions](#)
- [PTCRS Depreciation Instructions](#)
- [PTCRS Guide](#)
- [Mileage and Cost Allocation Worksheet](#)
- [Resident Student Transported Worksheet](#)

# Contact Information

**Reid Slayback**  
**217-782-5256**  
**[rslaybac@isbe.net](mailto:rslaybac@isbe.net)**