

ISBE SNP Update

Wednesday, Aug. 6, 2025



What's New? www.isbe.net/nutrition



- **ISBE SNP Updates**

- **Fall semester:** Aug. 6, Sept. 3, Oct. 1, Nov. 5
- **Spring semester:** Feb. 4, March 4, April 1, May 6
 - **2-3 p.m. on Wednesdays**
- Register for them all today; [click here](#).
- Earn annual training requirements

What's New? www.isbe.net/nutrition

- **Reimbursement Rates**

- USDA Released Reimbursement Rates for SY 25-26

- ISBE Chart Posted



School-Based Child Nutrition Programs Rates of Reimbursement
Effective July 1, 2025 – June 30, 2026

National School Lunch Program				
	Less Than 60%	Less Than 60% + 9 Cents**	60% or More*	60% or More* + 9 Cents**
Paid				
Reduced-Price	\$0.44	\$0.53	\$0.46	\$0.55
Free	\$4.20	\$4.29	\$4.22	\$4.31
	\$4.60	\$4.69	\$4.62	\$4.71

The maximum price a sponsor can charge for a student reduced-price lunch is \$4.00.
* The higher rate of reimbursement for lunch (60% or more) applies if 60% or more of the lunches served by an SFA during the second preceding school year were served free or at a reduced price.
** Additional 9 cents requires a one-time [menu certification](#)

School Breakfast Program		
	Non-Severe Need	Severe Need *
Paid	\$0.40	
Reduced-Price	\$2.16	\$0.40
Free	\$2.46	\$2.64
		\$2.94

The maximum price a sponsor can charge for a student reduced-price breakfast is \$3.00.
* The higher rate of reimbursement for breakfast (Severe-Need) applies if 40% or more of the lunches served at the site in the second preceding school year were served free or at a reduced price.

Special Milk Program			
	All Milk	Paid Milk	Free Milk
Pricing Program Without Free Option and Nonpricing Programs	\$0.2675		
Pricing Program With Free Option		\$0.2675	Average cost per ½ pint milk

After-School Snacks in After-School Care Programs		
	Paid	
	Reduced-Price	\$0.11
	Free	\$0.63
		\$1.26

The maximum price a sponsor can charge for a student reduced-price after-school snack is \$1.15.

Food Distribution Program	
Planned Assistance Level (PAL) for NSLP – TBD	

Illinois Free Breakfast and Lunch Programs	
TBD	

A la Carte Equivalency Factor - for use in FSMC/Vendor contracts	
Federal free lunch reimbursement (more than 60% + 9 cents) plus PAL plus Illinois free lunch reimbursement	
SY 2025-26 Contract – \$5.03	
SY 2026-27 Contract – TBD	

(July 30, 2025)

What's New? www.isbe.net/nutrition

- **Administrative Reviews**

- **SFAs Tentatively Selected for
SY 2025-26 Administrative Review**

- **Resources:**

- [ISBE Monitoring and Review Information webpage](#)
(Includes checklist and resource guide)

What's New? www.isbe.net/nutrition

- **SY 25-26 Household Eligibility Documents**

- [Household Eligibility Resources webpage](#)
- Distribute HEA and letter to all households not directly certified
- **REMINDER:** CEP schools do not use HEAs
 - Alternative forms ([69-72](#); [Spanish 69-72](#))
- [USDA Translated Applications](#)

What's New? www.isbe.net/nutrition

- **Direct Certification and HEA Workshops**

- Aug. 13 in Normal and Aug. 14 in Naperville
- Free half-day trainings; [register online today!](#)



- **Online DC and HEA Resources**

- [SNP Administrative Handbook](#)
 - [Direct Certification](#)
 - [Certification of Eligibility](#)
- [ISBE On-Demand Trainings](#)



What's New? www.isbe.net/nutrition

- **Direct Certification and HEA Webinars**
 - 10-11:30 a.m. Aug. 18: [Electronic Direct Certification](#)
 - 1:30-3 p.m. Aug. 19: [Certification of Household Eligibility Applications](#)



What's New? www.isbe.net/nutrition

- **CEP Webinar**

- 10-11:30 a.m. Thursday, Sept. 4

The Basics of Operating as a Community Eligibility Provision Approved District or Schools in Illinois

What's New? www.isbe.net/nutrition

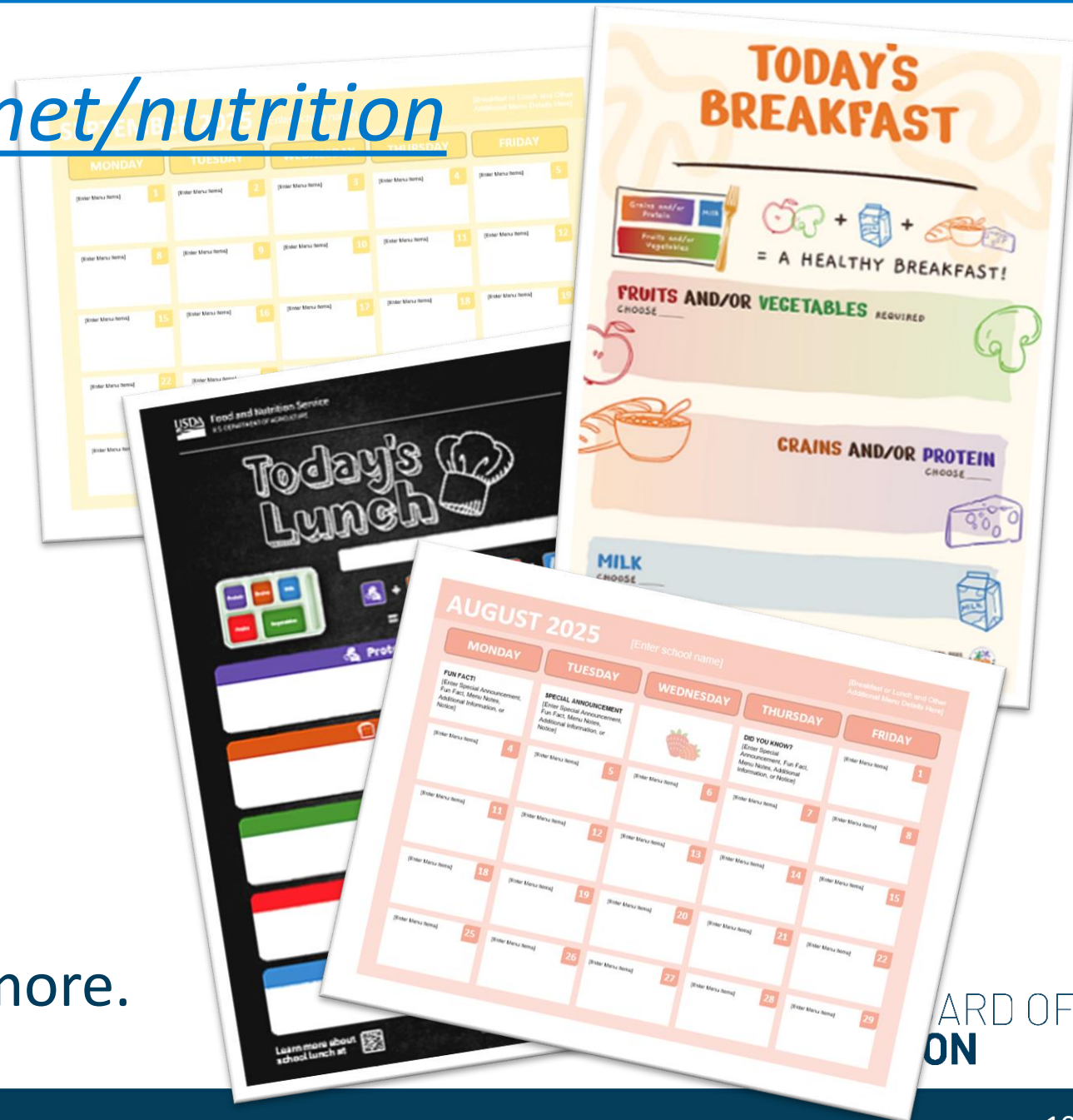
- **The Outlook**

- [Read the August 2025 issue!](#)
- Keep your WINS contacts up-to-date.
 - Most messages sent to Authorized Rep., Sponsor Contact, Claim Contact, Food Service Director, and Wellness Coordinator
- Others can sign up at www.isbe.net/subscribe



What's New? www.isbe.net/nutrition

- Menu Board & Signage Resources
 - Today's Breakfast Poster
 - Today's Lunch Poster
 - ISBE Menu Board Inserts
 - Monthly menu templates, weekly menu templates, Offer vs. Serve signs and more.



What's New? www.isbe.net/nutrition

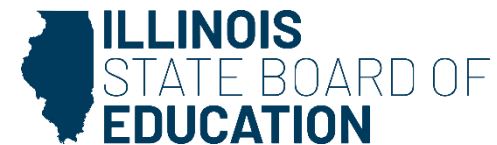


- **Summer Learning Institutes**

- Aug. 7 in Freeport, Springfield, and Vandalia
- Aug. 12 in Quincy
- Topics include culinary math, reducing sugar in school meals, incorporating scratch cooking, and more.
- <https://schoolnutrition.extension.illinois.edu/events>



Illinois Extension
UNIVERSITY OF ILLINOIS URBANA-CHAMPAIGN



What's New? www.isbe.net/nutrition

- **Serve It Safely Food Handler Training**
 - [2-4:30 p.m. Sept. 11](#)
 - [2-4:30 p.m. Nov. 4](#)
- **Food Allergies in School Nutrition**
 - [3-5 p.m. Oct. 7](#)



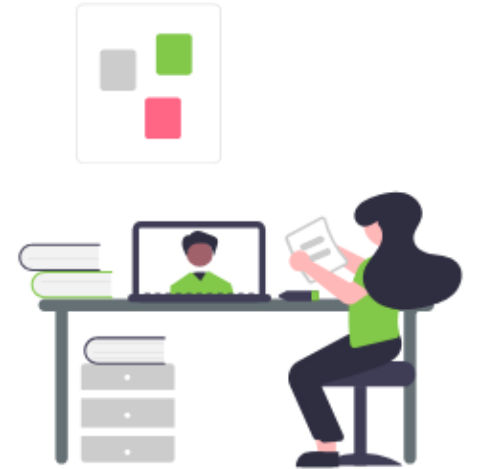
Illinois Extension
UNIVERSITY OF ILLINOIS URBANA-CHAMPAIGN



What's New? www.isbe.net/nutrition

- **ICN Virtual Instructor-Led Trainings**

- **Maintaining Student Acceptability of Lower-Sodium Meals, 1-4 p.m. Aug. 21**
- Register here: <https://theicn.org/info/vilt/>
- Check out the Institute of Child Nutrition's many resources at <https://theicn.org/>



What's New?

What's New

- FOOD RECALL: Ada Valley Meat Co. Ready-To-Eat Ground Beef Products
- FOOD RECALL: Kayem Foods Inc. Ready-To-Eat Chicken Sausage Products

- **Recalls and Public Health Alerts**
 - Monitor What's New? for the latest
- U.S. Department of Agriculture,
<https://www.fsis.usda.gov/recalls>
- U.S. Food and Drug Administration,
<https://www.fda.gov/food>

What's New?

- **2025 ISBE School Nutrition Champion**



**SCHOOL
NUTRITION
CHAMPION
AWARD**

- **Laura Goemaat**, food service manager in Carmi-White County CUSD 5
- Visit our [School Nutrition and Wellness Champions webpage](#).

What's New?

- **USDA Turnip the Beet Award-Winners**
 - **Chicago Park District**
 - **East St. Louis SD 189**



<https://www.fns.usda.gov/sfsp/turnip-the-beet>

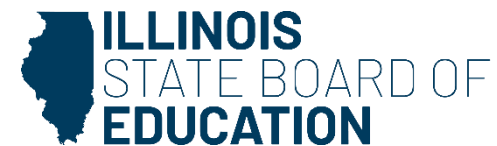


What's New?



• America's Healthiest Schools All-Stars 2025

- **Chicago Public School District 299**
 - Budlong Elementary School
 - Harriet Beecher Stowe School
 - Palmer Elementary School
 - Wildwood IB World Magnet School
- **Danville School District 118**
 - Northeast Elementary Magnet School
- **East St Louis School District 189**
 - James Avant Elementary School
- **McHenry School District 15**
 - Edgebrook Elementary School
 - Riverwood Elementary School



What's New?

- SBP Expansion Grant



<https://www.isbe.net/Pages/School-Breakfast-Program.aspx>

S
BOARD OF
EDUCATION

School Year 2025-26 Checklist

☐ Make sure your application is complete


Program

School Nutrition Programs ▼

Program Year

2026 ▼


WINS



Your application is complete.

Alerts [-]

No Sponsor alerts. Please use the Show Existing Site Alerts link below.

 Show existing site alerts

School Year 2025-26 Checklist

☐ Update contact information

- Authorized Representatives and Principals must be updated in [EPS](#).
- Sponsor Contact, Claim Contact, Food Service Director, Wellness Coordinator can be updated in [WINS](#).

School Year 2025-26 Checklist

☐ Sign up for The Outlook

- You can earn time toward your yearly training requirements.
- [Read past issues online.](#)



School Year 2025-26 Checklist

☐ Check Direct Certification

- Sign up for an [in-person workshop](#).
- Review the [SNP Administrative Handbook DC section](#).
- Watch the [recorded training](#).

School Year 2025-26 Checklist

☐ Distribute HEAs

- Sign up for an [in-person workshop](#).
- Review the [SNP Administrative Handbook HEA section](#).
- Watch the webinars or recorded trainings.

School Year 2025-26 Checklist

☐ Review the SNP Administrative Handbook

The screenshot shows the 'School Nutrition Programs' webpage from the Illinois State Board of Education (ISBE). The page has a dark blue header with the title 'NUTRITION SCHOOL NUTRITION PROGRAMS'. Below the header, there is a left sidebar with a 'NUTRITION' tab and a 'School Nutrition Programs' section containing a list of programs: After-School Care Program, Illinois Free Lunch and Breakfast Program, National School Lunch Program, Pandemic Electronic Benefit Transfer (P-EBT), School Breakfast Program, Seamless Summer Option, SNP: New Applicants, and Special Milk Program. The main content area features eight green buttons arranged in two rows, each representing a program: After-School Care Program, Illinois Free Lunch and Breakfast Program, National School Lunch Program, Pandemic Electronic Benefit Transfer (P-EBT), School Breakfast Program, Seamless Summer Option, SNP: New Applicants, and Special Milk Program. Below these buttons, there is a section titled 'A TO Z INDEX OF SCHOOL NUTRITION PROGRAMS' with a folder icon. Underneath, there are two icons: a book icon for 'ADMINISTRATIVE HANDBOOK' (highlighted in yellow) and a newspaper icon for 'NSLP OUTLOOK NEWSLETTERS'. At the bottom, there is an icon of three people for 'THE ABCS OF SCHOOL NUTRITION'. A 'RESOURCES' section on the left sidebar lists: Farm to School, Food Allergy Resources, Household Eligibility Resources, and Illinois Pre-Approved Equipment with a red flag icon.

<https://www.isbe.net/Pages/School-Nutrition-Programs.aspx>

School Year 2025-26 Checklist

☐ Utilize the A to Z Index of SNP

The screenshot shows a web browser window with two tabs: "Nutrition" and "A to Z Index of School Nutrition". The address bar displays "isbe.net/Pages/Nutrition-A-to-Z-Index.aspx". On the left, a sidebar menu has a "NUTRITION" header and a highlighted link for "A to Z Index of School Nutrition Programs". The main content area is titled "NUTRITION A TO Z INDEX OF SCHOOL NUTRITION PROGRAMS" and features a row of buttons for each letter of the alphabet from A to Z. Below the buttons, a grey box labeled "- A -" contains a list of links: "The ABCs of School Nutrition", "Accommodating Children With Special Dietary Needs", "Administrative Handbook", "Administrative Reviews", "After-School Care Program", "And Justice for All poster", "Annual Application Instructions", and "Application Process for New Sponsors". Below this, another grey box labeled "- B -" contains the links "Back to School Conference" and "Buy American".

NUTRITION

A to Z Index of School Nutrition Programs

NUTRITION
A TO Z INDEX OF SCHOOL NUTRITION PROGRAMS

A B C D E F G H I J K L M N O P Q R S T U V W X Y Z

- A -

- The ABCs of School Nutrition
- Accommodating Children With Special Dietary Needs
- Administrative Handbook
- Administrative Reviews
- After-School Care Program
- And Justice for All poster
- Annual Application Instructions
- Application Process for New Sponsors

- B -

- Back to School Conference
- Buy American

School Year 2025-26 Checklist

☐ Explore USDA Team Nutrition resources

- Order or Print Team Nutrition Resources



School Year 2025-26 Checklist

☐ Visit the SNP Training & Professional Standards webpage

- Our In-Person Trainings Section
- ISBE On-Demand Trainings & Resources
- Professional Standards Resources

School Year 2025-26 Checklist

☐ Earn your annual training requirements

Position	Defined As	Annual Hours*
Director	Responsible for managing school nutrition programs for all schools under an SFA	12
Manager	In charge of the operations of a site (or several sites)	10
All Other Staff	Works 20 or more hours weekly in direct program support	6
Part-time Staff	Works less than 20 hours per week in direct program support	4

*If hired on or after January 1, only half of the required hours for that school year are required.

https://fns-prod.azureedge.us/sites/default/files/resource-files/Professional_Standards_Guide.pdf

School Year 2025-26 Checklist

☐ Display Your Civil Rights Posters

- Order form on the [ISBE Civil Rights webpage](#)
- Must be prominently displayed and visible to program applicants and participants



DOF

School Year 2025-26 Checklist

☐ Be prepared for an Administrative Review

- [Monitoring and Review Information webpage](#)
 - SNP Administrative Review Checklists
 - Preparing for an Administrative Review Resource Guide

School Year 2025-26 Checklist

☐ Prepare for the Food Distribution Program

- USDA Foods deliveries begin in August
 - Review your Annual Order Form to ensure full utilization is planned during SY 25-26
 - Update delivery sites if needed
 - Update user access and contact information if needed
- Contacts: (217) 782-2491 or fdp@isbe.net

School Year 2025-26 Checklist

☐ If you contract with a FSMC

1. Update records to ensure [A la Carte Equivalency Factor](#) on monthly invoices for SY 25-26 is 5.03.
2. Update [USDA Foods Entitlement Tracking Log](#) with SY 25-26 entitlement value, and reconcile each month utilization to ensure on track to receive 100% credit by June 30.
3. When the SFA contracts with a FSMC, the SFA must conduct performance management of the FSMC contract through periodic on-site monitoring of the contracted requirement. Schedule FSMC performance reviews using the [SFA-FSMC Contract Monitoring Form](#).

✓ Contact Us

- Call (800) 545-7892
or (217) 782-2491



- Email cnp@isbe.net



- Include your RCDDT/Agreement
Number

✓ Contact Us

- Summer Food Service Program: summermeals@isbe.net
- ISBE Procurement staff: nutritionprocurement@isbe.net
- Summer EBT: sebt@isbe.net
- Food Distribution Program: fdp@isbe.net
- Local Food for Schools funding: localfoods@isbe.net



✓ Contact Us

Funding and Disbursements

<https://www.isbe.net/Pages/Funding-and-Disbursements.aspx>

- (217) 782-5256
- Reimbursement claims and payment information

IWAS

<https://apps.isbe.net/iwas>

- (217) 558-3600
- For help with logins and passwords

✓ Contact Us

Entity Profile System

<https://www.isbe.net/Documents/eps-guide.pdf>

- (312) 814-9192, epschange@isbe.net
- For updating official school records in EPS. This includes school name, address, main phone and fax, and administrator information.

GATA (Grant Accountability and Transparency Act)

<https://www.isbe.net/gata>

- gata@isbe.net

Questions?



Thank you!