

# School Breakfast Program Expansion Grant

Illinois State Board of Education  
Nutrition Department

# Agenda

**Background  
& Reminders**

**Breakfast  
Trainings**

**Breakfast  
Resources**

# Background & Reminders



# FY 2025 School Breakfast Program Expansion Grant

## Key Objectives:

- Improve quality and nutritional standards of breakfast food served using less sodium and sugar and serving a variety of protein sources, whole grains, milk, fruits, and vegetables
- Establish, maintain, or expand a School Breakfast Program within qualifying schools
- Increase School Breakfast Program participation in qualifying schools

# FY 2025 School Breakfast Program Expansion Grant

Examples of allowable grant activities include, but are not limited to:

- Marketing/event activities and materials to promote the School Breakfast Program to students in qualifying schools
- Purchase or renovation of equipment that is needed for operation of the School Breakfast Program in qualifying schools
- Staffing needs for operation of the School Breakfast Program in qualifying schools
- Travel expenses for relevant LEA/school personnel to attend in-person training related to this grant

# FY 2025 School Breakfast Program Expansion Grant

Webpage: <https://www.isbe.net/Pages/School-Breakfast-Program.aspx>



# To-Do List & Important Dates

Grant awarding documents must be completed in IWAS by September 30<sup>th</sup>

Submit breakfast menus for each qualifying school for the last full serving month of the 2023-2024 school year by September 30<sup>th</sup>

Register for a breakfast training in Ina, Springfield , or Joliet by September 30<sup>th</sup>

Submit a breakfast menu for each qualifying school for the month of February 2025 by March 3, 2025

# To-Do List & Important Dates (Continued)

**Conduct a universal free breakfast evaluation and submit results by March 3, 2025**

**Collect student feedback at least once per month from September 2024 to February 2025 and submit results by the last business day of each month**

**Attend 2 required virtual check-in meetings during the grant period (dates TBD)**

**Attend required wrap-up virtual meeting (date TBD)**



# Breakfast Training Event



# Breakfast Training Events

Date	Location
Friday, October 4th	Rend Lake College (Ina)
Friday, October 11 <sup>th</sup>	Lincoln Land Community College (Springfield)
Friday, October 18th	Rend Lake College (Ina)
Friday, October 25 <sup>th</sup>	Joliet Junior College (Joliet)

Registration links will be posted tomorrow at

<https://www.isbe.net/Pages/School-Breakfast-Program.aspx>

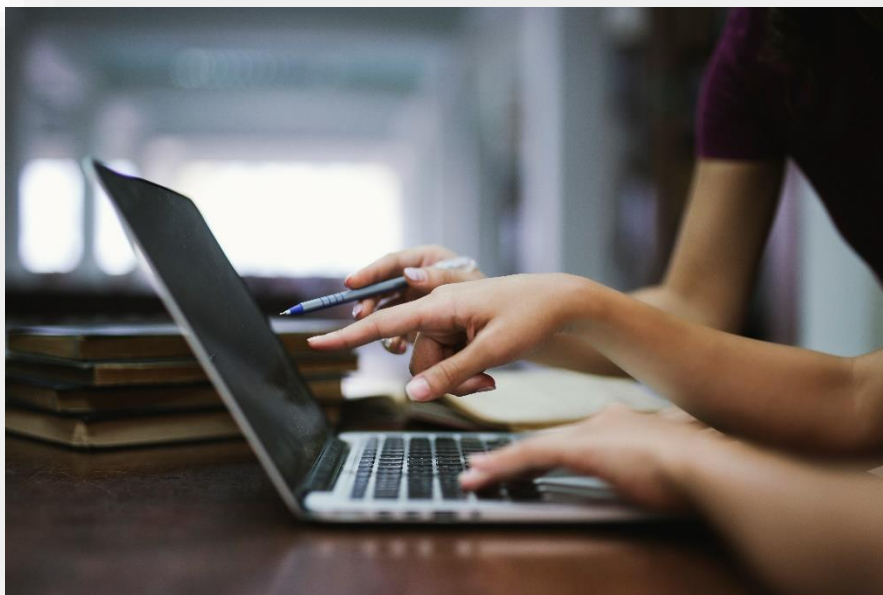
# Breakfast Training Events



## Agenda

- 8:30 AM: Registration
- 9:00 AM – 12:00 PM: Culinary demonstrations (college culinary program)
- 12:00 – 1:00 PM: Lunch
- 1:00 – 2:30 PM: Meal pattern training (ISBE)

# Breakfast Resources



# SBP Meal Pattern

- School Breakfast Program Meal Pattern Chart (with Final Rule Updates)  
<https://www.fns.usda.gov/school-meals/nutrition-standards/sbp-meal-pattern>
- School Breakfast Program Offer Versus Serve (OVS) Tip Sheet (USDA) <https://fns-prod.azureedge.us/sites/default/files/resource-files/OVS%20Breakfast%20tip%20sheet.pdf>
- Offering Meats and Meat Alternates at School Breakfast Guide (USDA)  
<https://www.fns.usda.gov/tn/offering-meats-and-meat-alternates-school-breakfast>
- Offering Smoothies as Part of Reimbursable School Meals Guide (USDA)  
<https://www.fns.usda.gov/tn/offering-smoothies-part-reimbursable-school-meals>
- Reducing Added Sugars at School Breakfast Guide (USDA)  
<https://www.fns.usda.gov/tn/sbp/reducing-added-sugars>

# SBP Recipes



USDA Standardized Recipes for School Breakfast

[https://theicn.org/cnrb/recipes-for-schools/#gird-50-100-serving+wprm\\_program\\_meal\\_type:breakfast?page\\_id=113192](https://theicn.org/cnrb/recipes-for-schools/#gird-50-100-serving+wprm_program_meal_type:breakfast?page_id=113192)



The Lunch Box (Chef Ann Foundation)

<https://www.thelunchbox.org/recipes-menus/recipes/?s=eyJwYWdlIjoxLCJzZWZyY2giOm51bGwslmNhdGVnb3J5IjpudWxsLCJzb3J0IjoibmFtZSIsImZvcmlhdCI6ImNhcmQifQ%3D%3D>

# SBP Promotion

National School Breakfast Week (SNA)

<https://schoolnutrition.org/about-school-meals/national-school-breakfast-week/>

Taste Test Events (USDA)

<https://www.fns.usda.gov/tn/taste-testing-event-resources>



# Questions?



# Thank you

***Breakfast Expansion Grant***

Deb Kains ([dkains@isbe.net](mailto:dkains@isbe.net))

Emily Durbin ([edurbin@isbe.net](mailto:edurbin@isbe.net))

Beth Tanner ([etanner@isbe.net](mailto:etanner@isbe.net))

***Nutrition Department***

(217) 782-2491

[CNP@isbe.net](mailto:CNP@isbe.net)