

Welcome

- **Please MUTE yourself upon signing in to the meeting.**
 - We will wait a few minutes for people joining us late to MUTE themselves.
- Make sure you sign in using the QR code or link in the chat every time you attend a learning event.
 - Use your district's full name as it appears on the notification letter.
 - List ALL districts you are representing on the sign-in sheet.

September 16 2025 Alternate
Assessment Attendance



Professional Learning Convening Alternate Assessment

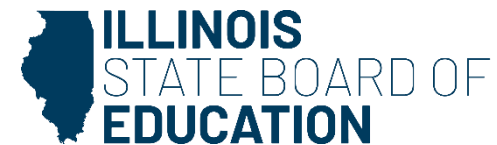
September 16, 2025

Tier 3 Support Level

Laura Avery-Glover, Principal Consultant
Michael Keeney, Principal Consultant
Rhonda Marks, Principal Consultant

Please sign in using this QR code or the link in the chat.

September 16 2025 Alternate
Assessment Attendance



Agenda

- Housekeeping
- Check-in on LEA Action Plan Implementation, Progress, and Collected Evidence
- Submitting Finalized Action Plans – Due Oct. 31
 - Required components
 - How to name files
 - How to submit
- 2024-25 Correction Window now closed, but can still be viewed
- Using Pre-ID data to calculate the 2024-25 Alternate Assessment Participation Ratio

Housekeeping

- New member of our team: Mike Keeney! Sadly, Dana Jamerson is no longer with ISBE. Mike will support her districts for the remainder of the cycle.
- Oct. 21 meeting addressing Alternate Assessment and Regular Assessment accommodations and modifications and alignment to daily instructional accommodations and modifications.
- Meeting required for levels 2 and 3, recommended level 1 districts attend or view recording.
- Nov. 18 meeting is canceled.



Finalized LEA Action Plans

- Due October 31
- LEA Action Plan must be completed (including all dates activities were completed)
- Accept PDF or Microsoft Word ONLY (no Google docs or screen shots)
- Save files using LEA's full name
 - 1. Whoville SD 148 LEA Action Plan
 - 2. Whoville SD 148 Evidence

Finalized LEA Action Plans, cont.

- All plans and evidence must be submitted using a secure portal. Documents sent via email WILL NOT be accepted.
- You can submit through these portal links. Links to the portal will also be sent out through a mass communication.
 - [Laura Avery-Glover's Secure Portal](#)
 - [Michael Keeney's Secure Portal](#)
 - [Rhonda Marks Secure Portal](#)



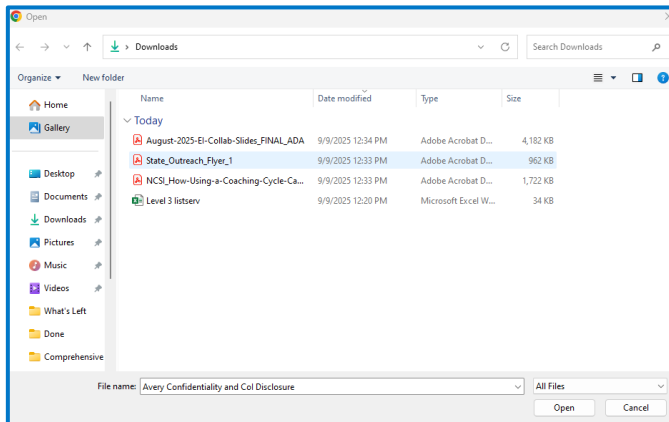
Submitting Documents through a Secure Portal

1. Select the link to your principal consultant's portal

You can submit through these portal links or use the "Request a File" link that your Principal Consultant will send you in the next few days.

- [Rhonda Mark's Secure Portal](#)
- [Laura Avery-Glover's Secure Portal](#)
- [Michael Keeney's Secure Portal](#)

3. Select the file you want to send and click "Open"



Laura Avery-Glover is requesting files for

LEA Action Plans and Documentation

Select files

2. Click on "Select Files"

Laura Avery-Glover is requesting files for

LEA Action Plans and Documentation

August-2025-El-Collab-Slides_FINAL_ADA...

+ Add more files

Total 1 file 4.08 MB

Name

Laura Avery-Glover

Upload

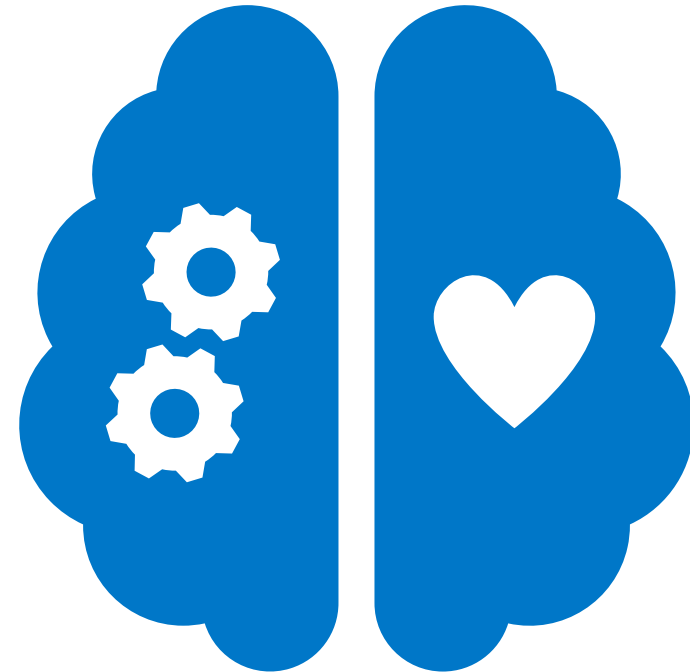
4. Click "Add more files" to add additional documents. Click "Upload" when you are finished selecting files.

How to Estimate the Alternate Assessment Participation Rate for 2024-25

- Information on how to calculate 1% threshold participation rate and where to find the necessary data can be found on our [Finding and Using Data](#) presentation.
- Students in grades 3-8 and 11 who should take the alternate assessment divided by ALL students in grades 3-8 and 11 who should take state assessment
 - [Reason for No Valid Attempt](#): Codes 5, 10, and 19
 - When 12TH graders count
- What impacts the participation rate?
 - Changes in enrollment in grades 3-8 and 11
 - Changes in the number of students identified to take the alternate assessment.

Thinking about the Data

- Is your participation rate what you expected?
- Has there been a change in your participation rate since last year?
 - What do you think contributed to the change?
- Is there anything significant that might impact your participation rate for this year?





Questions?