



Illinois State Board of Education

100 North First Street • Springfield, Illinois 62777-0001
www.isbe.net

Gery J. Chico
Chairman

Christopher A. Koch, Ed.D.
State Superintendent of Education

DATE: Jan. 14, 2015

MEMORANDUM

TO: The Honorable John J. Cullerton, Senate President
The Honorable Christine Radogno, Senate Minority Leader
The Honorable Michael J. Madigan, Speaker of the House
The Honorable Jim Durkin, House Republican Leader

FROM: Christopher A. Koch, Ed.D. *Christopher A. Koch*
State Superintendent of Education

SUBJECT: Illinois State Board of Education 2014 Annual Report

This report, submitted in compliance with 105 ILCS 5/1A-4E, provides a discussion of the overall condition of education in Illinois. Information is included concerning student and teacher demographics; data on teacher and administrator certification; federal, state and local resources; and other data about Illinois education.

If you have any questions or comments, please contact Matt Vanover, Director of Public Information/Deputy Superintendent, at (217) 782-4648.

cc: The Honorable Bruce Rauner, Governor
Tim Anderson, Secretary of the Senate
Tim Mapes, Clerk of the House
Legislative Research Unit
State Government Report Center



ILLINOIS STATE BOARD OF EDUCATION



2014

ANNUAL REPORT

Christopher A. Koch, Ed.D.
State Superintendent of Education

Gery J. Chico
State Board of Education Chairman

Illinois State Board of Education

Gery J. Chico, Chairman
Chicago

Steven R. Gilford, Vice Chairman
Evanston

Dr. Vinni M. Hall, Secretary
Chicago

James W. Baumann
Lake Bluff

Curt Bradshaw
Naperville

Dr. Andrea S. Brown
Marion

Dr. David L. Fields
Danville

Melinda A. LaBarre
Springfield

Christopher A. Koch, Ed.D., State Superintendent of Education

The State Board consists of nine members who are appointed by the Governor with the consent of the Senate. Board members serve four-year terms, with State Board membership limited to two consecutive terms. As of December 2014, there is one vacancy on the board. The board appoints the state superintendent of education, who may be recommended by the governor.



Visit the Illinois State
Board of Education
online at www.isbe.net

2014

ANNUAL REPORT



Illinois State Board
of Education

January 2015

To the Citizens of Illinois:

It is an exciting, challenging time for public education in Illinois as we conclude a year of significant transitions toward new ways of measuring, recognizing and supporting student and educator achievement to foster high-quality, meaningful instruction that produces graduates ready for the rigors of college and careers. In April, the Illinois State Board of Education (ISBE) received approval for a flexibility waiver from certain aspects of the federal No Child Left Behind Act. This waiver allows us to move forward with our state-developed plan to close achievement gaps, provide appropriate supports to struggling districts and promote effective teaching and leadership. This plan includes an improved accountability system based on multiple measures that more accurately reflect schools' progress, learning environments and needs for improvement.

Our efforts to date have paved the way for this new system, including updated learning standards and higher performance expectations focused on college and career readiness, new educator evaluation systems and preparations for new, more useful assessments aligned to these standards and expectations. This system change is tied to the three chief goals that guide our agency's initiatives and policies:

- ***GOAL 1:*** *Every student will demonstrate academic achievement and be prepared for success after high school.*
- ***GOAL 2:*** *Every student will be supported by highly prepared and effective teachers and school leaders.*
- ***GOAL 3:*** *Every school will offer a safe and healthy learning environment for all students.*

To meet these goals, our strategy focuses on four critical areas:

- Implementing internationally benchmarked student learning standards and an improved assessment system aligned to college and career readiness expectations;
- Establishing a longitudinal data system that will allow us to collect student data throughout our pre-K to 20 system and, ultimately, into the workforce;
- Implementing program and policy changes to improve teacher and school leader effectiveness;
- Targeting statewide interventions and support to our lowest-performing schools and districts.

In 2010, the State Board of Education laid the groundwork for these initiatives when it adopted new, more challenging learning standards for K-12 education in English language arts (ELA) and mathematics. These standards focus on higher-order thinking and concept mastery and outline what students should know and demonstrate at each grade level to be on track for college and careers. They are also transforming the way teachers engage and challenge their students by emphasizing application and real-world learning in the classroom. The new ELA and math standards were the first step toward a total review and update of all content standards. New physical education goals are now in place and newly adopted science benchmarks known as the Next Generation Science Standards will be

implemented during the 2016-17 school year. A review of the state's arts and social studies standards is also underway.

The new standards require new assessments. Starting in March, we will roll out the Partnership for Assessment of Readiness for College and Careers (PARCC) for third- through eighth-graders and high school students. The PARCC exams fully align to the new Illinois Learning Standards in ELA and math and emphasize academic rigor, critical thinking, problem-solving and college and career readiness for all students. Approximately 500 school districts, 1,200 schools and 111,000 students participated in PARCC field testing last spring, providing valuable feedback that will allow a smoother administration this year. More than half of Illinois schools will administer the PARCC online this spring. These new tests use technology-enhanced items and other innovations to allow students to better showcase their skills. Results will also be available more quickly, allowing for earlier interventions for struggling students.

ISBE also continues to develop and implement a longitudinal data system as part of its efforts to build its capacity for district and school improvement. Through collaboration with six other state agency partners, the Illinois Statewide P-20 Longitudinal Data System will connect student data from pre-kindergarten through college and the workforce to provide a comprehensive and detailed view of student progress. This longitudinal data will track student outcomes while adhering to strict data security and student privacy laws.

As part of Illinois' approved waiver, school districts across the state continue to develop new, more holistic educator evaluation models that consider student growth as well as professional skills and practices. State law staggers the implementation of teacher evaluations that include student growth, with all districts fully implementing the student growth component in the 2016-17 school year. The new evaluation systems provide statewide consistency for what outstanding teaching and leadership should look like and give local districts the time and opportunity to design their own systems that meet state rules and the needs and culture of their schools and community.

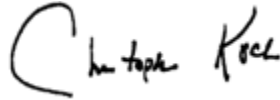
ISBE is also implementing new ways of helping the state's neediest schools with more expert support and flexibility under the waiver. Accountability benchmarks will go beyond test scores to evaluate schools through multiple measures, including how much academic growth students are making and how well educators are able to narrow achievement gaps or improve graduation rates. Illinois' plan calls for each school cutting its specific achievement gaps by half and also reducing by half the percentage of students not meeting standards over a period of six years. Districts will receive support services, from general to intensive depending on need, from ISBE, their Regional Offices of Education/Intermediate Centers and the Illinois Center for School Improvement. Schools and districts that require the most support will undergo comprehensive changes and be listed in "priority" or "focus" status for at least three years.

In many ways, it is a new day in education, and our agency has worked toward this end for more than two years. Our to-do list is still long and requires significant investment and support from lawmakers and taxpayers alike to see our strategic goals and initiatives to fruition for the benefit of our state's most precious resource, our children. All students deserve a competitive, well-rounded education that's relevant to the real world that awaits them once they leave our classrooms, and we are eager to continue the march ahead.

Sincerely,

A handwritten signature in black ink, reading "Gery J. Chico". The signature is written in a cursive style with a large, stylized "G" and "C".

Gery J. Chico
Chairman

A handwritten signature in black ink, reading "Christopher Koch". The signature is written in a cursive style with a large, stylized "C" and "K".

Christopher A. Koch, Ed. D.
State Superintendent

Table of Contents

Illinois Teacher of the Year.....	1
2014 Condition of Education.....	2
State, Local and Federal Resources	6
State, Local and Federal Resources for Elementary and Secondary Education	6
Elementary and Secondary School Income From Local Sources	7
Net Lottery Proceeds Compared to Total Appropriations to ISBE.....	8
State Revenues by Source	9
Appropriations by Major Purpose	10
Expenditures by Major Purpose	11
State Mandated Categorical Grant Programs	12
Public Schools Finance Statistics	13
Total Appropriations Per Pupil Enrolled.....	14
State Average Operating Expense Per Pupil	15
Average Operating Expense Per Pupil by Type of District	15
Total Funding	16
State Funding	16
Local Funding	16
Federal Funding	16
Percentages of State, Local and Federal Funding	17
Foundation Level Funding	17
Schools and Districts.....	18
A Profile of Illinois Public Schools in 2013-14.....	18
Illinois Public School Districts by Type	20
Comparison of Public School Districts by Type and Enrollment 2003-04 and 2013-14	21
Comparison of Public and Nonpublic Attendance Centers 2003-04 and 2013-14	21
Public School Recognition Committee Act or Omissions Status Report for the 2013-14 School Year	22
Interim Superintendents for the 2013-14 School Year	25
Students	26
Public and Nonpublic Pre-Kindergarten Through Post-Graduate Fall Pupil Enrollment.....	26
Comparison of Public Enrollment 2003-04 and 2013-14.....	27
Comparison of Public School Enrollment by Racial/Ethnic Distribution 2003-04 and 2013-14.....	28

Comparison of Nonpublic School Enrollment 2003-04 and 2013-14	28
Limited English Proficient Enrollment by Native Language 2013-14	29
Reasons for Exiting Limited English Proficient Programs 2013-14	29
School Districts Which Served Over 1,000 Limited English Proficient Students	30
Limited English Proficient Enrollment 2009-10 to 2013-14	30
Number of Pre-Kindergarten Children Served	31
High School Graduates	31
2013-14 High School Dropout Rate by Grade Level, Gender and Race/Ethnicity	32
Selected School Report Card Variables Statewide Trend Data	33
Student Performance	34
Illinois Standards Achievement Test (ISAT)	34
Prairie State Achievement Exam (PSAE)	34
Illinois Alternate Assessment (IAA)	35
ACT Composite Scores	36
2014 Advanced Placement Performance	36
National Assessment of Educational Progress (NAEP)	37
Comparison of Illinois and U.S. Achievement Gaps	37
Educators	39
Number of Selected Full-Time Public School Personnel by Gender 2013-14	39
Nonpublic School Personnel (FTE) 2013-14	39
Salaries for Selected Full-Time Public School Personnel 2013-14	40
Public School Pupil-to-Teacher Ratios	40
Educator Licenses Issued By Type	41
Educator Certificates/Endorsements Issued By Type	41
Educator Certificates Issued by Evaluation, Entitlement and Exchange	42
Educator Certification/Licensure Tests Administered by Test Fields	42
National Board Certified Teachers Certification Earned in Illinois	43
Expenditures of NBCT for Mentoring, Registrations and Annual Stipends	43
Special Education Services	44
Students With Disabilities Receiving Special Education Services	44
Students With Disabilities by Gender	44

Students With Disabilities by Race/Ethnic Group	45
Students With Disabilities by Age	46
Students With Disabilities Exiting School.....	46
Students With Disabilities by Primary Language.....	47
Students With Disabilities Receiving Related and Other Special Education Services	48
Educational Placement of Children With Disabilities	49
Teachers Employed to Provide Special Education Services (FTE)	50
Paraprofessionals Employed to Provide Special Education Services (FTE).....	51
Special Education and Related Services Personnel (FTE).....	51
Mandated Categorical Grants Rate Analysis	52
Teacher's Retirement Systems	53
How Illinois Ranks Among the States 2013.....	54

Illinois Teacher of the Year

Second-grade teacher Pam Reilly of Woodbury Elementary in Sandwich Community Unit School District 430 is the 2014 Illinois Teacher of the Year. She was one of 11 finalists recognized during the 39th annual Those Who Excel/Illinois Teacher of the Year banquet on Oct. 19, 2013, in Normal.



Pam competed for National Teacher of the Year and represented Illinois at a variety of events, including a trip to NASA Space Camp in Huntsville, Ala., and speaking engagements at teaching workshops and educational conferences.

Now in her 13th year of teaching, Pam is recognized as a collaborator and a leader by her colleagues in the Sandwich district, home of six schools serving more than 2,300 students in northern Illinois. She seeks advice and guidance from teachers in the higher grades so that she can help her students be prepared for the challenges they will face after they leave her classroom.

Pam stresses that students are in control of their own learning and that although she may do the planning and preparation for the school day, it is the students who are doing the important work. She also understands the importance of addressing a child's social, emotional as well as academic needs. She advocates for hungry students, those with absent parents or from financially stressed families, and students who need to be more challenged. Pam believes that all children, regardless of their circumstances, can thrive and learn.

A graduate of Aurora University with a Bachelor of Science in education, Pam also holds a Master of Education from National Louis University. She is a continuous participant in all types of professional development and is constantly researching and planning lessons that are engaging and relative.

More than 180 nominations for Those Who Excel were reviewed and scored three times by a selection committee composed of administrators, teachers and school board members. Principals, faculty, parents and students submit letters on behalf of candidates as part of the nomination process. The 11 finalists for Teacher of the Year were interviewed and videotaped, and those interviews were scored again before going to State Superintendent Koch for a final decision.

On Oct. 25, 2014, Pam joined educators from across the state at the 40th annual Those Who Excel/Illinois Teacher of the Year banquet as Steven Elza was named the 2015 Illinois Teacher of the Year. Steven is an automotive technology teacher at William Fremd High School in Township High School District 211.

2014 Condition of Education

The fiscal year 2015 (July 1, 2014, to June 30, 2015) State Budget for K-12 education totals about \$6.8 billion. This figure amounts to an increase of about \$118 million from the FY 2014 appropriation levels. The legislature has increased its investment in education over the last two fiscal years, though it is important to note that from FY 2009 to FY 2013, the state education budget experienced an overall drop of \$852 million.

The majority of this year's increase is being used for General State Aid (GSA). The GSA formula supports local school districts' general operations. Central to the GSA calculation is the "Foundation Level," which is intended to represent the minimum level of funding required to meet the basic education needs of a single pupil in the Illinois K-12 public school system. That Foundation Level has been set in statute at \$6,119 per pupil since 2010. In recent years, appropriations have fallen short of fully funding the Foundation Level and the Supplemental Low-Income Grant amounts that constitute the total GSA grant. As a result, GSA is once again being significantly prorated this school year, with payments made at approximately 89 percent of the amount owed to school districts.

The Illinois State Board of Education's (ISBE) FY 2015 budget request asked for full funding, or about \$54.5 million, to administer both the new Partnership for Assessment of Readiness for College and Careers (PARCC) assessments for elementary and high school students as well as the ACT. ISBE received feedback from districts that still wanted the option of giving their students access to the ACT. However, the state budget appropriated \$9.9 million less for assessments than ISBE's original recommendation. Therefore, the Board decided to reduce the scope of PARCC exams available for high school students this year and once again cover the cost of the ACT administration – but on an optional basis.

Student Demographics

The number of operating school districts has declined from 886 in 2004 to 863 in 2014. There are now 375 elementary districts, 100 high school districts and 388 unit districts. The number of public schools has dropped in the last decade from 3,907 in 2004 to 3,794 in 2014. The average school size has seen a slight increase to 546 students in 2014, up from 527 in 2004. Overall student enrollment in the regular Illinois public schools over the last 10 years increased from 2,060,048 in 2004 to 2,073,480 in 2014. Starting in 2011, student enrollment has been based on the home school.

Meanwhile, Illinois continues to experience a significant increase in low-income students. Low-income students increased from 39 percent of the enrollment in 2004 to 51.5 percent in 2014. It was 49.9 percent in 2013. Pupils are considered low-income if they are from families receiving public aid, are living in institutions for neglected or delinquent children, are being supported in foster homes with public funds, or are eligible for free or reduced-price lunches.

Students who are Black, Hispanic, Asian, Native Hawaiian/Pacific Islander, Native American, or Two or More Races made up 50.1 percent of the enrollment in 2014, up from 42.3 percent in 2004. The increase in minority percentage is accounted for mainly by increases among Hispanic and Asian students.

Learning Outcomes

In May 2014, the Education Commission of the States identified Illinois as having the best report card out of all 50 states and the District of Columbia for its accessible accountability reports, according to both researchers and parents. The 2014 Report Card was released in October with new metrics and capabilities that build on the functionality and enhanced features of the redesigned Report Card, which was introduced in October 2013. The new, more user-friendly Report Card highlights multiple measures of academic performance as well as school climate and learning conditions, rendering a more complete picture of the state's nearly 4,000 public schools.

New Report Card metrics include 12-month and 16-month enrollment statistics for former Illinois high school students in two-year and four-year colleges. The 2014 results show 66.3 percent of all Illinois graduates are enrolled in higher education 12 months after graduation, compared to 70.4 percent of graduates enrolled after the 16-month mark. The Report Card also highlights the percentage of students who finish their freshman year of high school on track for college readiness, meaning they have earned at least five full-year course credits (10 semester credits) and have earned no more than one semester F in a core course (English, math, science or social studies). Statewide, nearly 88 percent of the state's high school freshmen are on track to graduate.

The 2014 Report Card includes performance results from the state's previous assessment system, the Illinois Standards Achievement Test (ISAT) and the Prairie State Achievement Exam (PSAE). These tests are being replaced this spring with the PARCC exams. Under the previous accountability system, 54.3 percent of students are meeting or exceeding standards on the PSAE, compared to 53.3 percent for 2014. The state average for ACT composite scores for 11th-grade students taking the test in spring 2014 also slightly increased to 20.4 from 20.3 the previous year, and the percentage of students ready for college coursework (students who earned a combined score of at least a 21 on the ACT) also grew slightly to 45.8 percent, compared to 45.7 percent for last year. The percentage of students meeting or exceeding standards for the ISAT is 58.7 percent for 2014, a slight drop of 0.1 percent from the previous year.

The 2014 Report Card shows that the student academic growth score (growth from year to year on ISAT scores) has decreased in reading from 102.1 in 2013 to 99.4. The growth score increased in math from 101.4 in 2013 to 102.9. Schools that score below the average are not meeting the state average growth, and those scoring above are exceeding the average growth for a school. The growth score simply indicates the average amount of growth for students in a district or school and adds more context to other metrics.

Student Performance and Achievement

In August, ISBE announced that the graduating Class of 2014 achieved a composite score of 20.7 on the ACT, giving Illinois the second highest score among the 12 states that tested 100 percent of their graduates. In addition, the percentage of students meeting all four of ACT's College and Career Readiness Benchmarks increased to 26 percent from 25 percent last year. This figure has increased steadily over the last five years, with 23 percent of graduates hitting the benchmarks in 2010, 25 percent in 2013 and 26 percent in 2014.

Since 2003, Illinois' composite score has been among the highest for the group of states that annually tested all of their students. This year was the second consecutive year Illinois has ranked second. Illinois' ACT composite score is just slightly below the national average of 21.0, which is based primarily on the scores of self-selected, college-bound students. The majority of states only test students intending to go to college as opposed to Illinois, where every 11th-grader was required to take the ACT last spring as part of the PSAE. Illinois high school students will no longer take the PSAE, although the state has made the ACT available to districts during the 2014-15 school year. Instead, the new PARCC assessments focused on college and career readiness will be administered to high school students as well as third- through eighth-graders.

Illinois has also closed the equity gap for Latino students on Advanced Placement (AP) exams. According to the 10th Annual AP Report to the Nation, the percent of Latino Class of 2013 graduates who took the rigorous AP exams during high school surpassed the total percent of Latino graduates statewide, continuing a decade-long trend of continued Latino participation in these accelerated college prep courses. Latino students comprised 18.4 percent of Illinois' Class of 2013, but they represented 19.8 percent of graduates who took at least one AP exam during high school. Furthermore, the number of Latino graduates taking AP courses has more than quadrupled in the last decade, with 8,661 in 2013 compared to 1,994 in 2003. Illinois and Florida are the only two states that have a Latino graduate population greater than 10 percent that were able to remove the equity gap in AP participation for these students.

As its student population grows more diverse and economically challenged, Illinois continues to see record numbers of graduates taking these rigorous tests, with the percentage of graduates earning successful scores today almost doubling the total number of graduates who took the exam 10 years ago. Low-income students comprised 29.3 percent of graduates who took AP exams in 2013, compared to only 19 percent in 2008 and 12.1 percent in 2003. Meanwhile, the number of low-income graduates scoring a 3 or higher nearly tripled in the last five years from 1,969, or 9.7 percent in 2008, to 5,758, or 19.8 percent in 2013.

Illinois ranks 13th in the nation for the percentage of 2013 graduates – 21.5 percent – who scored at least a 3 on an AP exam during their high school career. The national average is 20.1 percent. Additionally, the percentage of Illinois graduates who reached that benchmark grew by 8.5 percentage points from 13 percent in 2003, putting Illinois among only 17 states that exceeded the national average of graduates scoring a 3 or higher in 2013.

Illinois State Board of Education

2014 Annual Report

Demographic, Financial and Statistical Data

STATE, LOCAL AND FEDERAL RESOURCES

State, Local and Federal Resources For Elementary and Secondary Education (Dollars in Millions) (105 ILCS 5/2-3.11)

Year	State		Local		Federal		Total
	\$	%	\$	%	\$	%	\$
2013-14	\$10,229.4	34.3%	\$16,560.4	55.6%	\$3,007.4	10.1%	\$29,797.2
2012-13	9,401.1	33.0	16,075.6	56.5	2,976.7	10.5	28,453.4
2011-12	9,305.3	32.4	15,815.4	55.1	3,580.8	12.5	28,701.5
2010-11	9,286.8	33.1	15,344.1	54.6	3,460.8	12.3	28,091.7
2009-10	9,897.3	34.6	15,037.0	52.6	3,637.4	12.7	28,571.7
2008-09	7,992.7	30.4	14,488.5	55.1	3,812.7	14.5	26,293.9
2007-08	8,519.6	34.6	13,903.7	56.5	2,165.7	8.8	24,589.0
2006-07	7,492.1	33.1	12,982.2	57.3	2,174.1	9.1	22,648.4
2005-06	6,875.5	32.3	12,226.1	57.5	2,163.1	10.2	21,264.7
2004-05	6,955.7	33.7	11,456.7	55.5	2,219.3	10.8	20,631.7
2003-04	7,206.1	35.9	10,805.3	53.8	2,073.8	10.3	20,085.2
2002-03	6,873.2	36.1	10,226.2	53.7	1,952.1	10.2	19,051.5
2001-02	7,181.1	38.8	9,724.0	52.5	1,623.0	8.8	18,528.1
2000-01	6,785.1	37.7	9,331.6	51.9	1,868.0	10.4	17,984.7
1999-00	6,354.0	37.8	8,907.0	52.9	1,565.8	9.3	16,826.8
1998-99	5,654.4	36.1	8,571.1	54.7	1,434.3	9.2	15,659.8
1997-98	4,849.3	33.9	8,052.0	56.2	1,417.9	9.9	14,319.2
1996-97	4,307.1	32.7	7,700.9	58.5	1,152.9	8.8	13,160.9
1995-96	3,994.8	32.1	7,339.8	58.9	1,123.7	9.0	12,458.3
1994-95	3,792.6	32.4	6,841.0	58.4	1,080.6	9.2	11,714.2

Notes:

- Fiscal years and school years start July 1 and end June 30. Tax years start January 1 and end December 31. The state and federal funds shown are based on fiscal years while local funds are based on tax (calendar) years. For example, the 2013-14 year includes actual state and federal appropriations for state fiscal year 2014 and local revenues accruing to school districts from the 2012 tax year. 2012 property taxes are payable to the districts in calendar year 2013, usually after July 1.
- Local includes local real property tax revenues as estimated by the total property tax extension of districts and Corporate Personal Property Replacement Funds. Not included as local revenue are proceeds from investment income, income from school food services, and revenue generated through fees and assessments.
- State includes appropriated amount with original appropriations, supplementals, and teachers retirement and pension contributions.
- FY 2010 federal sources include \$1.5 billion in federal funds received through the American Recovery and Reinvestment Act (ARRA).

Elementary and Secondary School Income from Local Sources
(Dollars in Millions)
(105 ILCS 5/2-3.11)

Tax Year	Calendar Year Collected	Property Tax Revenues^a	CPP Replacement Fund	Total Regular Revenues^b
2012	2013	\$15,864.1 ^c	\$696.3 ^d	\$16,560.4
2011	2012	15,447.6	628.0	16,075.6
2010	2011	15,188.5	626.9	15,815.4
2009	2010	14,632.6	711.4	15,344.0
2008	2009	14,377.2	659.8	15,037.0
2007	2008	13,706.4	782.1	14,488.5
2006	2007	13,109.8	793.9	13,903.7
2005	2006	12,310.9	671.3	12,982.2
2004	2005	11,600.7	625.4	12,226.1
2003	2004	11,001.7	455.0	11,456.7
2002	2003	10,398.8	406.5	10,805.3
2001	2002	9,823.8	402.4	10,226.2
2000	2001	9,220.2	503.8	9,724.0
1999	2000	8,775.2	556.4	9,331.6
1998	1999	8,405.7	501.3	8,907.0
1997	1998	8,057.6	513.5	8,571.1
1996	1997	7,583.6	468.4	8,052.0
1995	1996	7,278.1	422.8	7,700.9
1994	1995	6,914.0	425.8	7,339.8
1993	1994	6,476.9	364.1	6,841.0

^a Revenues are derived by multiplying the total tax rate times the applicable equalized assessed value (EAV) property base for the tax year.

^b "Total Regular Revenues" is the sum of "Property Tax Revenues" and "CPP Replacement Fund" revenues.

^c Based on 2012 EAVs and 2011 total tax rates.

^d Actual payments to be made by the Illinois Department of Revenue for calendar year 2013.

**Net Lottery Proceeds
Compared to Total Appropriations to ISBE
(Dollars in Millions)
(105 ILCS 5/2-3.11)**

Fiscal Year	Total Appropriations^a	Net Lottery Proceeds^b	
		Amount	% of Total
2013	\$9,402.1	655.6	7.0
2012	9,328.8	639.8	6.9
2011	9,099.6	631.9	6.9
2010	8,211.4	614.9	7.5
2009	8,843.6	625.0	7.1
2008	8,212.1	657.0	8.0
2007	7,337.9	622.4	8.5
2006	6,808.0	670.5	9.8
2005	6,850.7	614.0	9.0
2004	6,559.1	570.1	8.7
2003	6,176.3	540.0	8.7
2002	7,249.9	555.0	7.7
2001	6,785.1	490.0	7.2
2000	6,354.0	515.0	8.1
1999	5,654.4	540.0	9.6
1998	4,849.3	565.0	11.7
1997	4,307.1	590.2	13.7
1996	3,994.8	594.1	14.9
1995	3,792.7	588.3	15.5

^a General Revenue Funds include retirement contributions and supplemental appropriations.

^b Net Lottery Proceeds provided by and updated by the Illinois Department of Revenue.

Notes:

- Since FY 1985, Net Lottery Proceeds have been deposited into the Common School Fund.
- Starting March 1, 2010, annual transfers to the Common School Fund are equal to the amount transferred in FY 2009, adjusted for inflation. Any additional net revenue goes to the Capital Projects Fund.
- FY 2013 Net Lottery Proceeds are the most recent available.

State Revenues by Source
(Dollars in Millions)
(105 ILCS 5/2-3.11)

ALL FUNDS	FY13		FY14 (est.)	
Income Taxes	\$19,716	33.5%	\$19,618	31.6%
Sales Taxes	7,703	13.0	7,973	12.8
Federal Aid	15,918	26.9	17,940	28.9
Road Taxes	1,260	2.1	1,271	2.0
State Lottery (gross)	1,379	2.3	1,463	2.4
All Other	13,090	22.2	13,845	22.3
Total	\$59,066	100.0%	\$62,110	100.0%

GENERAL FUNDS	FY13		FY14 (est.)	
Income Taxes	\$19,716	54.3%	\$19,618	53.4%
Sales Taxes	7,354	20.2	7,610	20.7
Federal Aid	4,154	11.4	4,113	11.2
Public Utility	1,033	2.8	1,006	2.7
State Lottery (net)	656	1.8	669	1.8
All Other	3,415	9.4	3,709	10.1
Total	\$36,328	100.0%	\$36,725	100.0%

Note: FY 2013 amounts are actual amounts; FY 2014 amounts are preliminary actual amounts.

Data source: FY 2015 State of Illinois Budget Book.

Appropriations by Major Purpose
(Dollars in Millions)
(105 ILCS 5/2-3.11)

ALL FUNDS	FY13		FY14 (est.)	
Elementary & Secondary	\$12,389	20.2%	\$13,312	20.7%
Higher Education	3,848	6.2	3,956	6.1
Transportation	2,634	4.3	2,260	3.5
Human Services	27,157	44.1	28,665	44.5
Public Safety	2,650	4.3	2,609	4.1
Environment & Bus. Serv.	519	0.8	558	0.9
Gov't Services	4,528	7.3	4,455	6.9
All Other	7,883	12.8	8,574	13.3
Total	\$61,608	100.0%	\$64,389	100.0%

GENERAL FUNDS	FY13		FY14 (est.)	
Elementary & Secondary	\$9,351	30.3%	\$10,228	32.9%
Higher Education	3,237	10.5	3,307	10.6
Transportation	22	0.1	6	0.0
Human Services	12,572	40.8	12,156	39.0
Public Safety	1,588	5.2	1,648	5.3
Environment & Bus. Serv.	45	0.1	45	0.1
Gov't Services	1,235	4.0	1,050	3.4
All Other	2,763	9.0	2,700	8.7
Total	\$30,813	100.0%	\$31,140	100.0%

Notes:

- FY 2013 amounts are actual amounts; FY 2014 amounts are preliminary actual amounts.
- Government Services include Executive, Legislative, Judicial and Attorney General.

Data source: FY 2015 State of Illinois Budget Book.

Expenditures by Major Purpose
(Dollars in Millions)
(105 ILCS 5/2-3.11)

ALL FUNDS	FY13		FY14 (est.)	
Elementary & Secondary	\$11,502	21.4%	\$13,312	22.5%
Higher Education	3,685	6.9	3,941	6.7
Transportation	2,145	4.0	2,306	3.9
Human Services	23,764	44.2	23,047	39.1
Public Safety	2,077	3.9	2,272	3.8
Environment & Bus. Serv.	372	0.7	372	0.6
Gov't Services	4,148	7.7	4,279	7.2
All Other	5,993	11.2	9,547	16.2
Total	\$53,686	100.0%	\$59,076	100.0%

GENERAL FUNDS	FY13		FY14 (est.)	
Elementary & Secondary	\$9,340	30.8%	\$10,228	33.3%
Higher Education	3,234	10.7	3,301	10.7
Transportation	22	0.1	22	0.1
Human Services	12,147	40.1	11,754	38.3
Public Safety	1,564	5.2	1,648	5.4
Environment & Bus. Serv.	43	0.1	43	0.1
Gov't Services	1,172	3.9	1,028	3.3
All Other	2,751	9.1	2,684	8.7
Total	\$30,273	100.0%	\$30,708	100.0%

Notes:

- FY 2013 amounts are actual amounts; FY 2014 amounts are preliminary actual amounts.
- Government Services include Executive, Legislative, Judicial and Attorney General.

Data source: FY 2015 State of Illinois Budget Book.

State Mandated Categorical Grant Programs
(Dollars in Thousands)
(105 ILCS 5/2-3.104)

Appropriations

Program Name	FY07	FY08	FY09	FY10	FY11	FY12	FY13	FY14
Sp Ed Personnel	368,500.0	422,463.0	426,100.0	459,600.0	457,352.0	452,257.2	440,200.0	439,061.8
Sp Ed Funding for Children	268,892.6	348,561.0	348,604.8	351,378.4	334,236.8	343,375.7	314,196.1	303,091.7
Sp Ed Private Tuition	109,080.0	139,400.0	151,600.0	181,100.0	183,223.1	177,743.7	206,843.3	218,947.7
Sp Ed Summer School	8,694.0	10,000.0	11,000.0	11,700.0	11,296.5	10,750.0	10,100.0	10,100.0
Sp Ed Transportation	326,607.8	355,718.0	383,300.0	429,700.0	422,189.0	432,525.6	440,500.0	440,500.0
Reg/Voc Transportation	286,118.0	312,819.0	339,500.0	351,100.0	213,049.1	223,976.1	205,808.9	206,947.1
Ill Free Lunch/Breakfast	21,000.0	21,000.0	26,300.0	26,300.0	26,300.0	26,300.0	14,300.0	14,300.0
Sp Ed Orphanage	79,400.0	79,400.0	101,800.0	120,200.0	120,200.0	101,700.0	111,000.0	105,000.0
Reg Ed Orphanage	<u>13,130.0</u>	<u>11,500.0</u>	<u>11,600.0</u>	<u>13,000.0</u>	<u>13,000.0</u>	<u>13,000.0</u>	<u>13,000.0</u>	<u>12,000.0</u>
Totals	1,481,422.4	1,667,861.0	1,799,804.8	1,944,078.4	1,780,846.5	1,781,628.3	1,755,948.3	1,749,948.3
Prior Year % Change	3.98%	13.94%	6.63%	8.02%	-8.4%	0.04%	-1.44%	-0.34%

100% Claims including Chicago 299 (No Audit Adjustments)

Appropriation Year	FY07	FY08	FY09	FY10	FY11	FY12	FY13	FY14
Reimbursement Programs	05-06	06-07	07-08	08-09	09-10	10-11	11-12	12-13
Sp Ed Personnel	365,156.8	424,635.4	439,072.6	454,401.2	458,457.8	452,235.8	440,282.4	441,525.2
Sp Ed Funding for Children	268,892.6	314,600.0	331,051.1	334,236.8	334,236.8	343,375.7	314,196.1	303,091.7
Sp Ed Private Tuition	115,530.5	137,526.8	154,644.8	182,134.0	183,012.2	191,096.1	216,782.0	226,181.2
Sp Ed Summer School	8,824.3	9,926.2	10,854.4	11,602.5	11,296.4	10,750.0	10,270.7	11,151.9
Sp Ed Transportation	331,888.0	357,969.9	392,374.3	416,376.4	425,813.4	433,370.0	440,149.6	449,057.4
Reg/Voc Transportation	300,417.6	310,662.8	333,561.6	340,240.5	336,893.9	332,409.7	320,773.0	321,832.3

Appropriation Year	FY07	FY08	FY09	FY10	FY11	FY12	FY13	FY14
Ill Free Lunch/Breakfast	23,393.6	26,564.3	27,498.4	29,013.1	29,968.5	36,136.8	38,000.9	39,432.9
Sp Ed Orphanage	87,164.1	88,467.1	98,276.3	106,373.5	109,169.8	101,591.4	103,488.0	99,706.6
Reg Ed Orphanage	12,149.2	13,065.3	11,600.6	11,557.1	11,802.8	12,087.2	11,575.3	11,166.4

Pro-Ration Reimburse %	FY07	FY08	FY09	FY10	FY11	FY12	FY13	FY14
Sp Ed Personnel	100%	100%	97%	100%	100%	100%	100%	100%
Sp Ed Funding for Children	92%	100%	100%	100%	100%	100%	100%	100%
Sp Ed Private Tuition	90%	100%	96%	99%	100%	87%	91%	94%
Sp Ed Summer School	97%	100%	100%	100%	100%	100%	96%	81%
Sp Ed Transportation	98%	100%	97%	100%	100%	100%	99%	97%
Reg/Voc Transportation	97%	100%	100%	100%	74%	77%	76%	74%
Ill Free Lunch/Breakfast	81%	78%	91%	83%	78%	73%	38%	36%
Sp Ed Orphanage	100%	100%	100%	100%	100%	100%	100%	100%
Reg Ed Orphanage	100%	100%	100%	100%	100%	100%	100%	100%

Notes:

- Current fiscal year appropriations pay previous year claims except for IL Free Lunch/Breakfast and Orphanage programs.
- Approp & claim amounts include amounts funded through the Chicago Block Grant.

Public Schools Finance Statistics
(105 ILCS 5/2-3.11)

	District Type	Per Capita Tuition Charge	Operating Expense per Pupil
2012-13 Averages	Elementary	\$10,161	\$11,594
	Secondary	14,259	15,621
	Unit	9,363	11,532
	ALL DISTRICTS	10,167	12,045
	Chicago SD 299 (10 mos.)	10,412	13,791
2011-12 Averages	Elementary	\$10,105	\$11,457
	Secondary	13,891	15,138
	Unit	9,026	11,338
	ALL DISTRICTS	9,911	11,842
	Chicago SD 299 (10 mos.)	9,462	13,433
2010-11 Averages	Elementary	\$9,560	\$11,190
	Secondary	13,241	14,681
	Unit	8,633	11,262
	ALL DISTRICTS	9,440	11,664
	Chicago SD 299 (10 mos.)	9,127	13,616
2009-10 Averages	Elementary	\$9,675	\$11,082
	Secondary	13,481	14,658
	Unit	8,995	11,375
	ALL DISTRICTS	9,725	11,537
	Chicago SD 299 (10 mos.)	9,765	13,077
2008-09 Averages	Elementary	\$9,392	\$10,633
	Secondary	13,147	14,260
	Unit	8,807	10,821
	ALL DISTRICTS	9,497	11,197
	Chicago SD 299 (10 mos.)	9,519	12,880

District types:

Elementary School Districts: Pre-K - 8

Secondary (High) School Districts: 9 - 12

Unit School Districts: Pre-K - 12

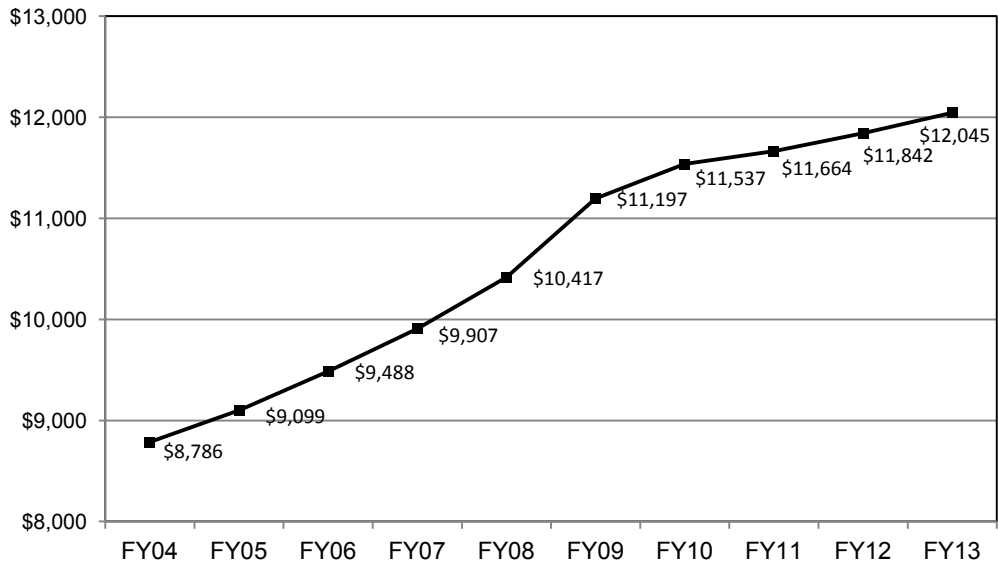
Total Appropriations per Pupil Enrolled
(105 ILCS 5/2-3.11)

Fiscal Year	Total Appropriations^a	Fall Enrollment	Total Appropriations Per Pupil Enrolled^b	% Change in Dollars Per Pupil Enrolled
2014	\$29,797.2	2,073,480	\$14,371	3.7
2013	28,453.4	2,054,155	13,852	0.7
2012	28,701.7	2,087,628	13,748	1.5
2011	28,091.7	2,074,806	13,539	-0.2
2010	28,571.8	2,105,779	13,568	8.9
2009	26,310.6	2,112,132	12,457	7.1
2008	24,589.0	2,113,435	11,635	8.8
2007	22,648.4	2,118,692	10,690	6.2
2006	21,264.7	2,111,706	10,070	2.4
2005	20,631.7	2,097,503	9,836	2.9
2004	20,085.2	2,100,961	9,560	4.6
2003	19,051.5	2,084,187	9,141	2.2
2002	18,528.1	2,071,391	8,945	2.0
2001	17,984.7	2,051,021	8,769	5.2
2000	16,827.2	2,018,316	8,337	7.1
1999	15,659.8	2,011,814	7,784	8.5
1998	14,319.2	1,996,184	7,173	7.6
1997	13,160.9	1,974,824	6,664	4.2
1996	12,458.3	1,948,089	6,395	4.8
1995	11,714.2	1,920,289	6,100	5.6

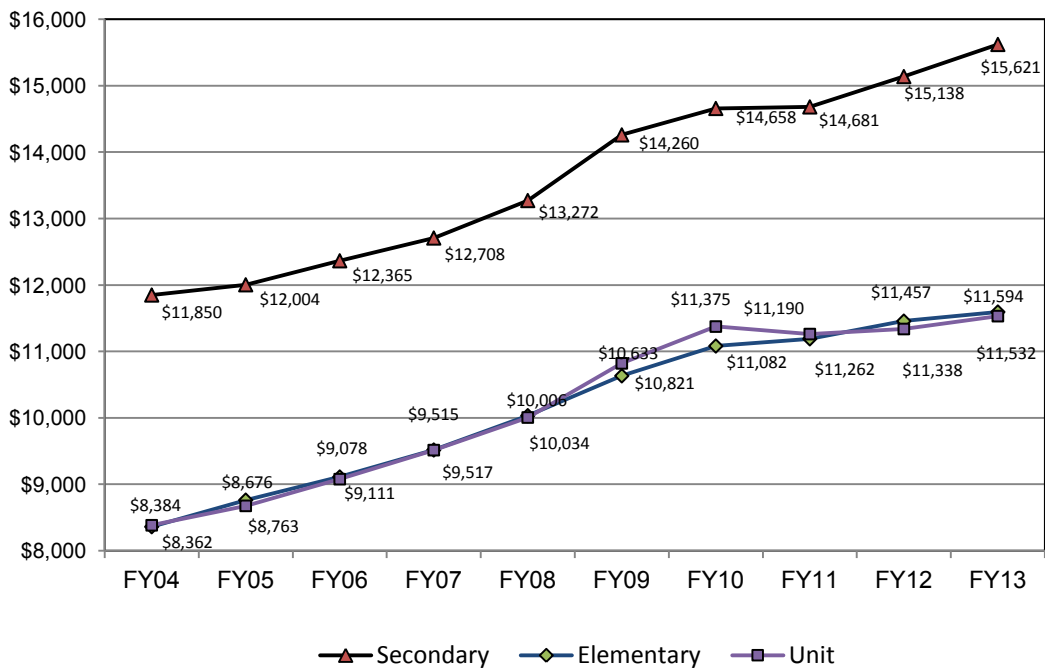
^a In millions; includes state, federal and local funds

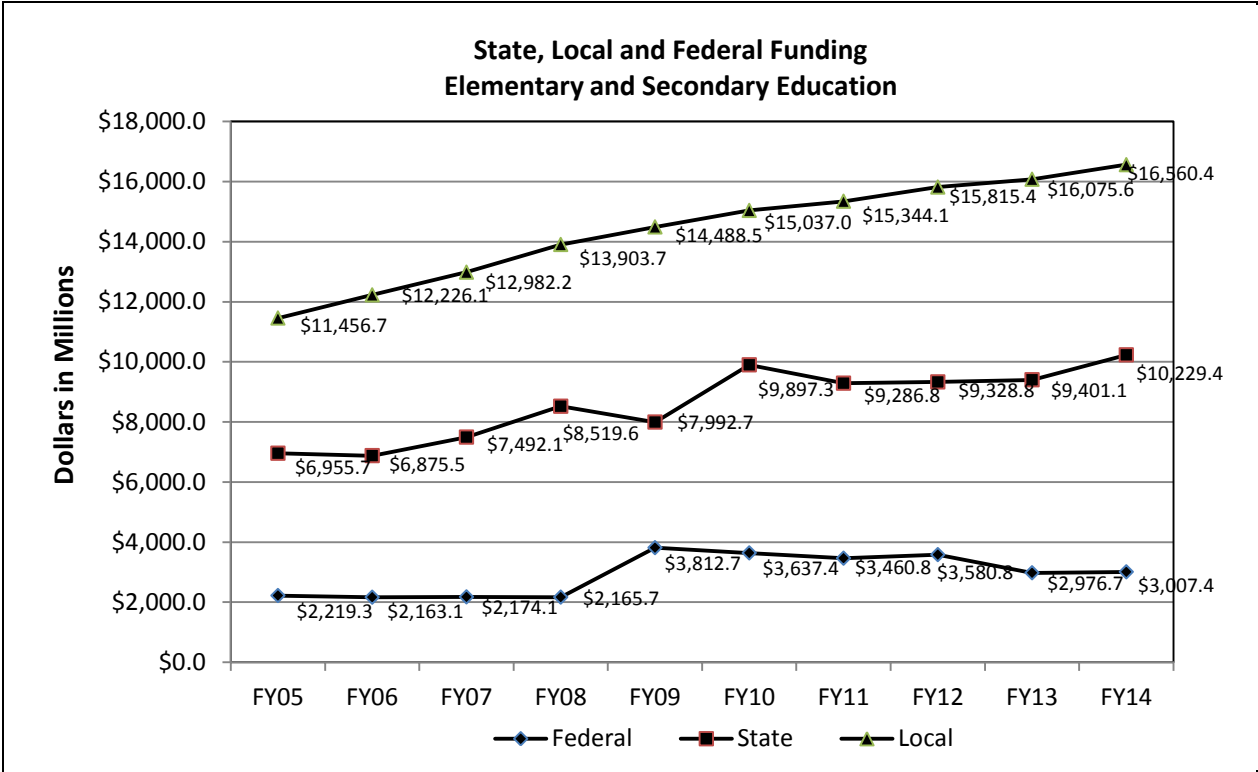
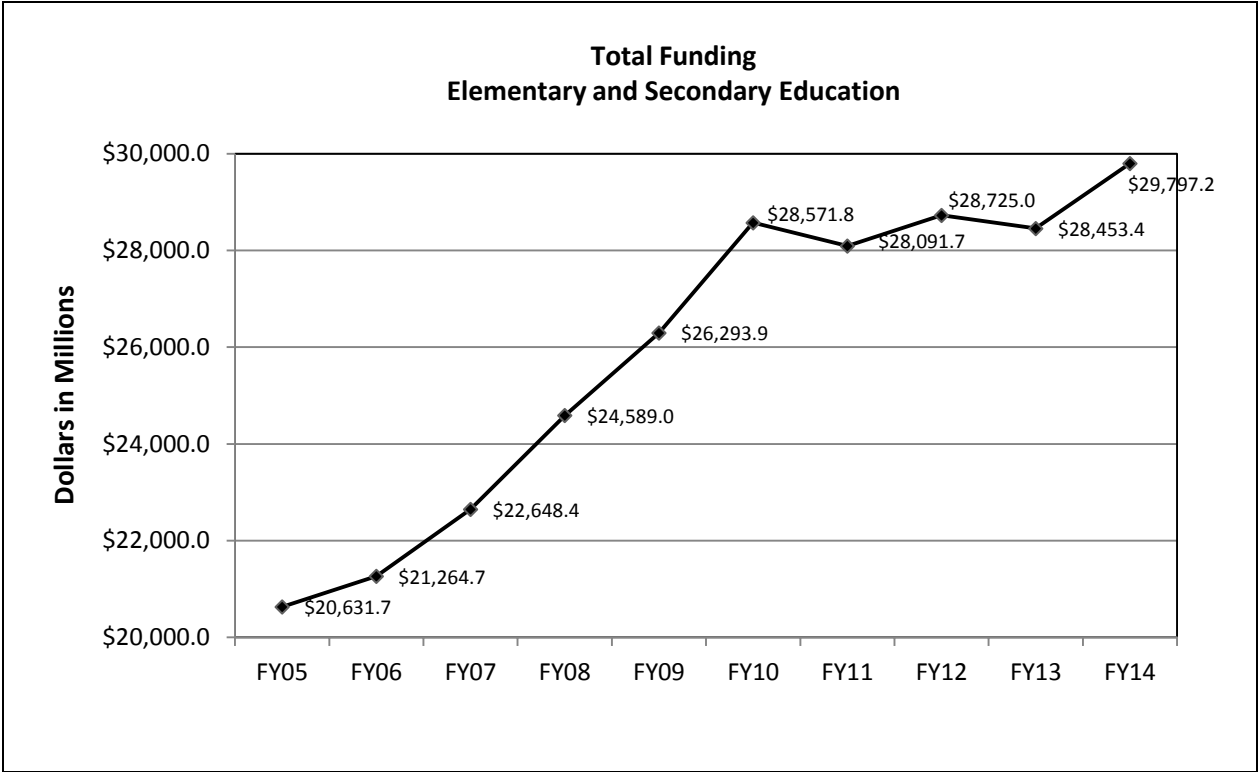
^b In whole dollars

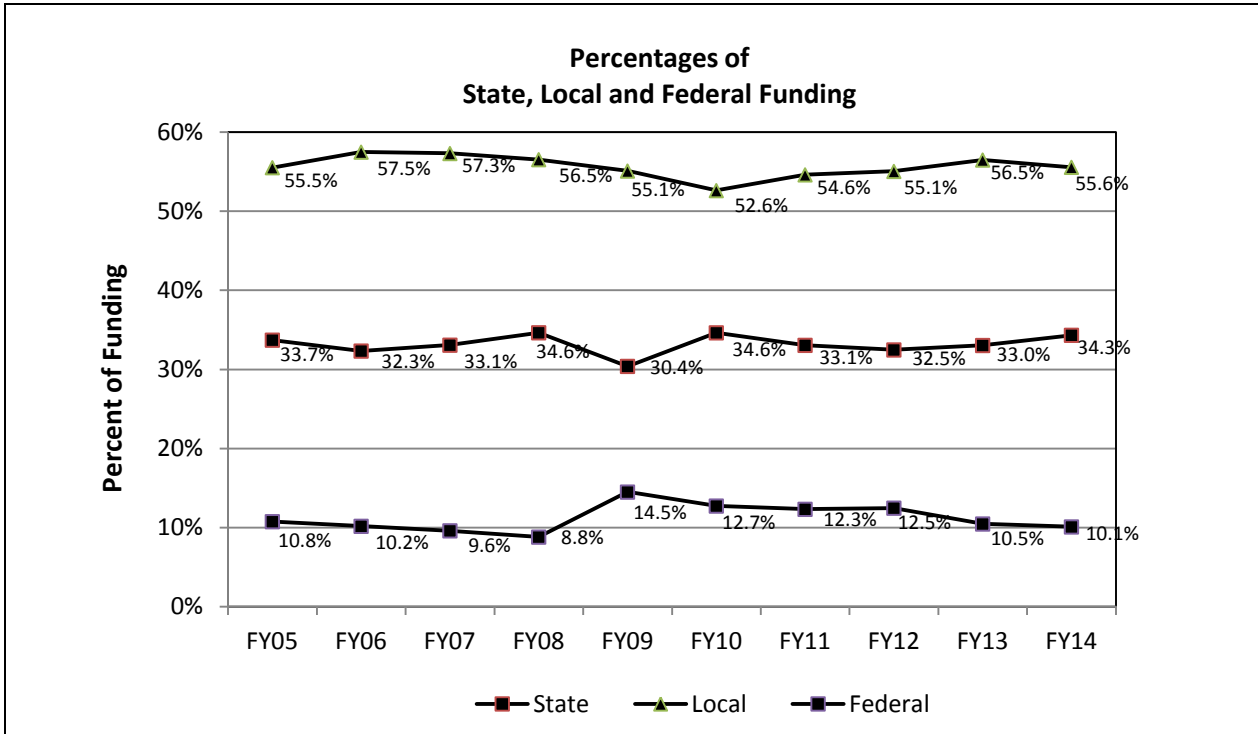
State Average Operating Expense per Pupil



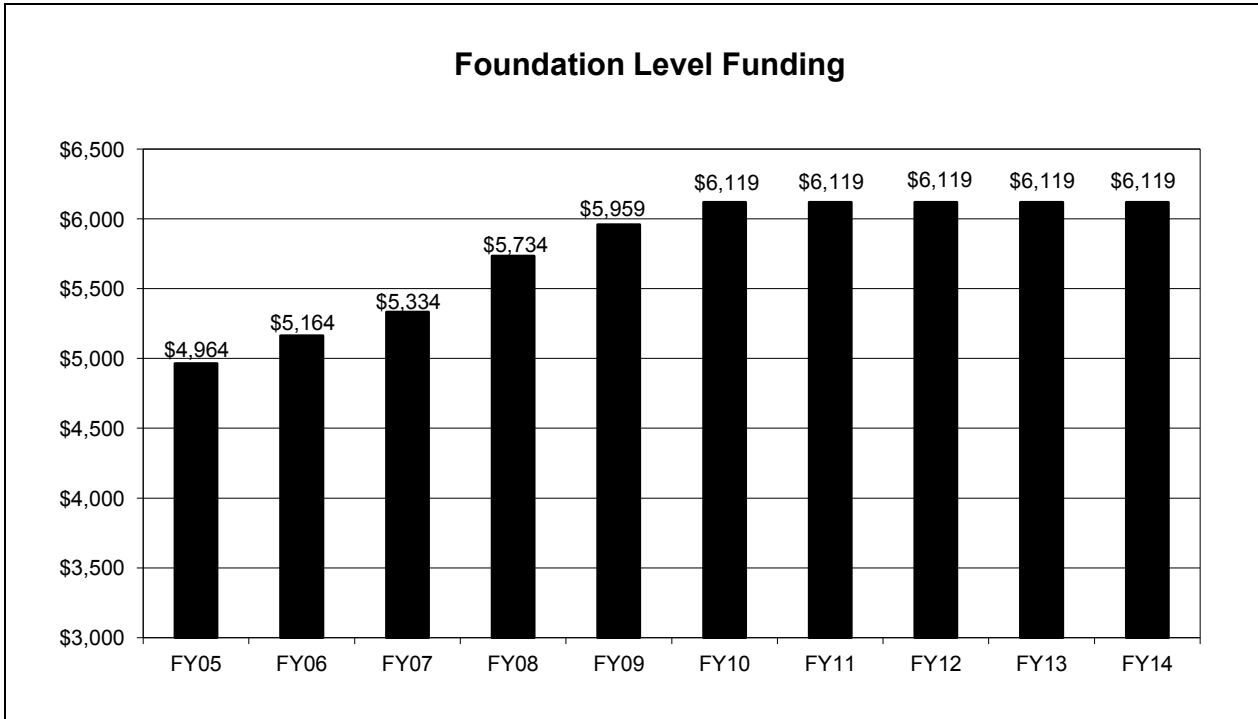
Average Operating Expense per Pupil by Type of District







Note: The percent increase in federal funds and decrease in state funds in FY 2009 is due to federal funds received through the American Recovery and Reinvestment Act (ARRA).



SCHOOL AND DISTRICTS

A Profile of Illinois Public Schools in 2013-14 Selections from School Report Card Files (regular public schools only)

SUMMARY

863 districts (regular public)	86% graduation rate
3,794 schools	2.2% dropout rate
2,046,857 students	12.3% mobility rate
51.5% low-income enrollment	9.5% LEP enrollment

TRENDS

Number of school districts declined. The number of operating school districts declined from 886 in 2004 to 863 in 2014; there were 375 elementary districts, 100 high school districts and 388 unit districts.

Decrease in the number of public schools. The number of public schools decreased from 3,907 in 2004 to 3,794 in 2014. These figures include charter schools and regular public schools that issue school report cards.

Slight increase in average school size. The average school size increased from 527 in 2004 to 546 in 2014.

Student enrollment increased. Student enrollment in regular Illinois public schools increased from 2,060,048 in 2004 to 2,046,857 in 2014. Starting in 2011, student enrollment has been based on the home school.

Low-income enrollment exceeded 50 percent. Low-income students increased from 39 percent of the enrollment in 2004 to 51.5 percent in 2014. Pupils are considered low-income if they are from families receiving public aid, are living in institutions for neglected or delinquent children, are being supported in foster homes with public funds, or are eligible for free or reduced-price lunches.

Mobility rate declined. The mobility rate declined from 16.8 percent in 2004 to 12.3 percent in 2014. The mobility rate is the sum of the students transferred out and students transferred in, divided by the average daily enrollment, multiplied by 100. A student may be counted more than once, depending on the number of transfers the student makes in the year.

Percentage of minority students exceeded 50 percent. Students who are Black, Hispanic, Asian, Native Hawaiian/Pacific Islander, Native American, or Two or More Races made up 50.1 percent of the enrollment in 2014, up from 42.3 percent in 2004. The increase is mainly among Hispanic and Asian students.

LEP students increased in last decade. The percentage of Limited English Proficient (LEP) students increased from 6.7 percent in 2004 to 9.5 percent in 2014. LEP students include those who are eligible for bilingual education.

Dropout rate declined. The dropout rate declined from 4.6 percent in 2004 to 2.2 percent in 2014. Dropouts include students in grades 9-12 whose names have been removed from the district roster for any reason other than death, extended illness, graduation/completion of a program of studies, transfer to another school, or expulsion.

Increase in chronic truancy rate. The chronic truancy rate was 8.7 percent in 2014, compared to 2.1 percent reported for 2004. Chronic truants include students subject to compulsory attendance who have been absent without valid cause for nine or more of the past 180 school days.

Average class size declined at most levels. Between 2004 and 2014, the average class sizes for:

- Kindergarten increased from 21.0 to 21.2
- Grade 1 remained the same at 21.6
- Grade 3 decreased from 22.6 to 22.5
- Grade 6 decreased from 23.7 to 23.1
- Grade 8 decreased from 23.1 to 22.6
- High School (grades 9-12) decreased from 19.9 to 19.4

Little change in the percentage of Non-White teachers in the last decade. Non-White accounted for 16.1 percent of the classroom teachers in 2014 compared to 15.4 percent in 2004. Non-White teachers include those who are Black, Hispanic, Asian, Native Hawaiian/Pacific Islander, or Native American, Two or More Races, or unknown.

Slight decline in the percentage of male classroom teachers. There is a downward trend in the percentage of male teachers, declining from 23.4 percent of the teaching force in 2004 to 22.9 percent in 2014.

Percentage of teachers with graduate degrees increased. In 2014, teachers who had a master's degree or higher accounted for 58.2 percent of the classroom teachers in Illinois public schools, up from 48.6 percent in 2004.

Pupil-teacher ratio declined at the elementary level and secondary levels. Between 2004 and 2014, the elementary pupil-teacher ratio declined from 19.4:1 to 18.6:1 and the secondary pupil-teacher ratio declined from 18:8:1 to 18.1:1.

Graduation rate decreased. The graduation rate in 2014 was 86 percent, down from 86.4 percent in 2004.

Illinois Public School Districts by Type
(105 ILCS 5/2-3.11)

School Year	Elementary Districts	Secondary Districts^a	Unit Districts	Total Districts^b
2013-14	375	100	388	863
2012-13	375	99	389	863
2011-12	377	99	390	866
2010-11	378	101	388	867
2009-10	378	100	390	868
2008-09	378	100	390	868
2007-08	378	100	390	868
2006-07	376	100	395	871
2005-06	377	100	396	873
2004-05	379	101	399	879
2003-04	381	101	405	887
2002-03	383	103	407	893
2001-02	383	103	407	893
2000-01	383	103	408	894
1999-00	384	103	409	896
1998-99	385	104	408	897
1997-98	388	106	406	900
1996-97	392	107	405	904
1995-96	392	107	408	907
1994-95	395	110	410	915

^a Does not include one non-operating district.

^b Does not include five state-operated school systems (the Illinois Department of Corrections/Juvenile Justice school district, two state laboratory schools, the Illinois Mathematics and Science Academy and the Illinois Department of Rehabilitation state schools).

Data source: CDS File Record Counts.

Comparison of Public School Districts by Type and Enrollment
2003-04 and 2013-14
(105 ILCS 5/2-3.11)

District Enrollment	Elementary Districts		Secondary Districts		Unit Districts		Total Districts*	
	03-04	13-14	03-04	13-14	03-04	13-14	03-04	13-14
25,000 or more	0	0	0	0	4	5	4	5
10,000 to 24,999	4	4	2	2	14	12	20	18
5,000 to 9,999	9	11	10	11	24	26	43	48
2,500 to 4,999	53	49	22	25	31	32	106	106
1,000 to 2,499	101	101	29	23	118	107	248	231
600 to 999	54	59	17	16	89	84	160	159
300 to 599	58	55	11	14	100	93	169	162
Fewer than 300	102	96	10	9	25	29	137	134
Total	381	375	101	100	405	388	887	863

* Does not include one non-operating district, Department of Corrections/Juvenile Justice school district, state-operated districts, special education districts and state charter districts.

Data sources: Fall Housing Enrollment from School Report Card; CDS File Record Counts.

Comparison of Public and Nonpublic Attendance Centers
2003-04 and 2013-14
(105 ILCS 5/2-3.11)

Public Attendance Centers			Nonpublic Attendance Centers		
	03-04	13-14		03-04	13-14
Elementary	2,639	2,501	Elementary*	913	742
Junior High	609	621	Secondary	117	111
Secondary	666	678	Unit	142	63
Special Education and Others	359	431	Special Education	78	5
Total	4,273	4,231	Total	1,250	921

* Includes Junior High

Data sources: Fall Housing Enrollment from School Report Card; CDS File Record Counts.

**Illinois State Board of Education
Public School Recognition Committee
Act or Omissions Status Report for the 2013-14 School Year
(105 ILCS 5/1A-4)**

Region	Facility	Final Assignment	Violation	Date of District Notification	Notes/Resolution as of the End of the 2014 Calendar Year
04 Boone/ Winnebago	Rockford SD 205	Recognized Pending Further Review	Various	3/24/14 via U.S. mail, certified, return-receipt requested	No indication that deficiencies have been removed by the end of the 2014 calendar year.
07 South Cook Intermediate Service Center	Thornton Twp HS District 205 -Thornton Twp HS	Recognized Pending Further Review	Improper teacher assignment	3/25/14 via U.S. mail, certified, return-receipt requested	No indication that deficiencies have been removed by the end of the 2014 calendar year.
11 Clark/ Coles/ Cumberland/ Douglas/ Edgar/ Moultrie/ Shelby	Tuscola CUSD 301 -Tuscola HS -East Prairie MS -North Ward Elem	Recognized Pending Further Review	Missing policies, procedures and protocol	3/24/14 via U.S. mail, certified, return-receipt requested	On 9/18/14 the ROE indicated that deficiencies have been removed. Status for FY 2015 will be fully recognized.
19 DuPage	CHSD 94	Recognized Pending Further Review	Various deficiencies via compliance visit	3/24/14 via U.S. mail, certified, return-receipt requested	Per the ROE, deficiencies were removed during FY 2014. Status for FY 2015 will be fully recognized.
19 DuPage	CCSD 180	Recognized Pending Further Review	Various deficiencies via compliance visit	3/24/14 via U.S. mail, certified, return-receipt requested	Per the ROE, deficiencies were removed during FY 2014. Status for FY 2015 will be fully recognized
22 Fulton/ Schuyler	Astoria CUSD 1 -Astoria Elem	Recognized Pending Further Review	Improper teacher assignment	3/24/14 via U.S. mail, certified, return-receipt requested	On 10/16/14 the ROE indicated that deficiencies have been removed. Status for FY 2015 will be fully recognized.

Region	Facility	Final Assignment	Violation	Date of District Notification	Notes/Resolution as of the End of the 2014 Calendar Year
28 Bureau/ Henry/Stark	Kewanee CUSD 229 -Central JHS -Central Elem	Recognized Pending Further Review	Improper teacher assignment	3/24/14 via U.S. mail, certified, return-receipt requested	No indication that deficiencies have been removed by the end of the 2014 calendar year.
31 Kane	Aurora East USD 131 -East HS -Simmons MS -Waldo MS -Cowherd MS -Allen Elem -Bardwell Elem -Beaupre Elem -Brady Elem -Dietrich Elem -Gates Elem -Hermes Elem -Johnson Elem -Krug Elem -Oak Park Elem -O'Donnell Elem -Rollins Elem -Rogers Magnet Academy -Early Childhood Dev Center -Child Service Center Preschool	Recognized Pending Further Review	Various deficiencies via compliance visit	12/6/14 via U.S. mail	No indication that deficiencies have been removed by the end of the 2014 calendar year.
50 St. Clair	St. Libory CSD 30	Recognized Pending Further Review	PERA violation (principal evaluation)	3/24/14 via U.S. mail, certified, return-receipt requested	No indication that deficiencies have been removed by the end of the 2014 calendar year.
50 St. Clair	Cahokia CUSD 187 -Cahokia HS	Recognized Pending Further Review	Health/life safety violation	3/24/14 via U.S. mail, certified, return-receipt requested	Per the ROE, deficiencies were removed during FY 2014. Status for FY 2015 will be fully recognized.
50 St. Clair	East St. Louis SD 189 -Mason/Clark MS -E St. Louis- Lincoln MS -Davis Elem	Recognized Pending Further Review	Improper teacher assignment	3/24/14 via U.S. mail, certified, return-receipt requested	No indication that deficiencies have been removed by the end of the 2014 calendar year.

Region	Facility	Final Assignment	Violation	Date of District Notification	Notes/Resolution as of the End of the 2014 Calendar Year
50 St. Clair	O'Fallon CCSD 90 -Kampmeyer Elem -Hinchliffe Elem -Evans Elem -Schaefer Elem -Moye Elem	Recognized Pending Further Review	Failure to offer daily physical education	3/18/14 via U.S. mail	Legislative waiver granted effective 7/1/14. Status for FY 2015 will be fully recognized.
53 Tazewell	Pekin PSD 108 -Edison JHS -Broadmoor JHS -Jefferson Elem -Smith Elem -Starke Elem -Altman Primary -Willow Elem -Wilson Intermediate -Dirksen Elem -Washington Intermediate	Recognized Pending Further Review	Failure to submit application for recognition	3/24/14 via U.S. mail, certified, return-receipt requested	No indication that deficiencies have been removed by the end of the 2014 calendar year.
53 Tazewell	Pekin CSD 303	Recognized Pending Further Review	Various deficiencies via compliance visit	3/24/14 via U.S. mail, certified, return-receipt requested	No indication that deficiencies have been removed by the end of the 2014 calendar year.

Interim Superintendents for the 2013-14 School Year (105 ILCS 5/10-21.4)

The School Code requires all school districts “to employ a superintendent who shall have charge of the administration of the schools under the direction of the board of education” (105 ILCS 5/10-21.4). The School Code does not, however, further define the ways in which school districts are permitted to employ a superintendent. For example, the School Code does not require, on its face, that a school district superintendent be hired “full-time,” nor does the School Code, on its face, prohibit a school district from retaining a retired district superintendent to work in that school district for less than 120 days in a school year.

The Illinois State Board of Education (the “Agency”) has done its best, despite the lack of clarity in the law, to determine what is and what is not an acceptable employment practice and has historically taken action pursuant to Section 1.20 of its administrative rules (23 Ill. Admin. Code 1.20) to reduce the recognition status of school districts that have not shown a commitment to employing a full-time district superintendent. Regional Superintendents have ensured compliance consistency.

In order to clarify the responsibilities of school districts for employing a full-time district superintendent, the Agency conducted a rulemaking in fall 2010 to define the circumstances under which a superintendent must be employed. The Joint Committee on Administrative Rules subsequently objected to the proposed modifications, citing the Agency’s lack of statutory authority to limit employment. The Agency subsequently agreed to withdraw the rulemaking. Therefore, until the issue is clarified in statute, the Agency will not be taking compliance action against a school district that chooses to employ either an interim superintendent or a superintendent on less than a full-time basis.

STUDENTS

Public and Nonpublic Pre-Kindergarten through Post-Graduate Fall Pupil Enrollment (105 ILCS 5/2-3.11)

School Year	Public	Nonpublic	Total
2013-14	2,073,480	219,700	2,293,180
2012-13	2,054,155	222,122	2,276,277
2011-12	2,087,628	237,377	2,325,005
2010-11	2,074,806	241,323	2,316,129
2009-10	2,105,779	243,680	2,349,459
2008-09	2,112,132	249,373	2,361,505
2007-08	2,113,435	265,276	2,378,711
2006-07	2,118,692	244,188	2,362,880
2005-06	2,111,706	267,651	2,379,357
2004-05	2,097,503	225,765	2,323,268
2003-04	2,100,961	312,891	2,413,780
2002-03	2,084,187	306,047	2,390,234
2001-02	2,071,391	317,198	2,388,589
2000-01	2,051,021	323,231	2,374,252
1999-00	2,018,316	323,869	2,342,185
1998-99	2,011,814	322,664	2,334,478
1997-98	1,996,184	321,406	2,317,590
1996-97	1,974,824	320,880	2,295,704
1995-96	1,948,089	323,438	2,271,527
1994-95	1,920,289	320,290	2,240,579

Note: Nonpublic schools report data voluntarily on an annual basis.

Data source: Fall Housing Enrollment Report.

Comparison of Public School Enrollment
2003-04 and 2013-14
(105 ILCS 5/2-3.11)

Grade Level	2003-04 Enrollment	2013-14 Enrollment	Percent Change
Pre-K	52,373	47,359	-9.6
Pre-K Bilingual	1,236	12,987	950.7
Pre-K Special Ed.	13,539	18,895	39.6
Kindergarten	146,803	144,861	-1.3
1 st Grade	155,142	152,598	-1.6
2 nd Grade	154,191	149,641	-3.0
3 rd Grade	161,329	151,390	-6.2
4 th Grade	160,246	152,301	-5.0
5 th Grade	158,367	150,862	-4.7
6 th Grade	163,901	151,610	-7.5
7 th Grade	162,933	153,326	-5.9
8 th Grade	<u>160,271</u>	<u>153,782</u>	<u>-4.0</u>
Elementary Total	1,490,331	1,439,612	-3.4
9 th Grade	174,343	164,717	-5.5
10 th Grade	155,848	159,140	2.1
11 th Grade	139,504	150,595	8.0
12 th Grade	136,974	142,683	4.2
Post Graduates*	<u>3,961</u>	<u>n/a</u>	<u>n/a</u>
Secondary Total	610,630	617,135	1.1
Total Elementary & Secondary	2,100,961	2,056,747	-2.1

* Reporting of post-graduates ended in FY 2009.

Notes:

- Public schools include Regional Office of Education, Department of Corrections/Juvenile Justice, special education and regular education schools.
- 2014 includes students in other sites.

Data source: State Summary Report.

**Comparison of Public School Enrollment
By Racial/Ethnic Distribution
2003-04 and 2013-14**

Public School by Race	2003-04		2013-14	
	Enrollment	%	Enrollment	%
White Non-Hispanic	1,205,782	57.4	1,030,865	49.7
Black Non-Hispanic	444,290	21.1	364,832	17.6
Hispanic	370,942	17.7	511,809	24.7
Asian	75,865	3.6	92,711	4.5
American Indian or Alaskan Native	4,082	0.2	6,084	0.3
Hawaiian or Other Pacific Islander	n/a	n/a	2,167	0.1
Two or More Races	n/a	n/a	65,012	3.1
Total Students	2,100,961		2,073,480	
Total Minority Students	895,791	42.6	1,042,615	50.3

Data source: Fall Housing Report.

**Comparison of Nonpublic School Enrollment
2003-04 and 2013-14
(105 ILCS 5/2-3.11)**

Grade Level	2003-04 Enrollment	2013-14 Enrollment	Percent Change
Pre-K	35,559	28,783	-19.1
Kindergarten	26,225	17,554	-33.1
1 st Grade	24,080	15,673	-34.9
2 nd Grade	23,684	15,013	-36.6
3 rd Grade	22,911	14,839	-35.2
4 th Grade	22,353	14,602	-34.7
5 th Grade	21,775	14,628	-32.8
6 th Grade	21,696	14,243	-34.4
7 th Grade	21,112	14,261	-32.5
8 th Grade	20,260	14,293	-29.5
Ungraded Elementary	n/a	566	n/a
Elementary Special Ed. (PK-8)	<u>1,648</u>	<u>96</u>	<u>-94.2</u>
Elementary Total	241,303	164,551	-31.8
9 th Grade	17,185	13,148	-23.5
10 th Grade	15,700	13,073	-16.7
11 th Grade	15,086	12,554	-16.8
12 th Grade	15,179	12,590	-17.1
Ungraded Secondary	n/a	303	n/a
Secondary Special Ed. (9-12)	<u>2,066</u>	<u>0</u>	<u>-100.0</u>
Secondary Total	65,216	51,688	-20.7
Total Elementary & Secondary	312,819	216,239	-30.9

Note: Nonpublic schools report data voluntarily on an annual basis.

**Limited English Proficient Enrollments By Native Language
2013-14**

Language	Chicago SD 299 Number	Non-Chicago Number	State Total Number	%
Spanish	60,756	104,650	165,406	79.6
Arabic	1,440	5,023	6,463	3.1
Polish	1,094	4,949	6,043	2.9
Urdu	824	1,998	2,822	1.4
Pilipino (Tagalog)	391	1,391	1,782	0.9
Gujarati	211	1,437	1,648	0.8
Mandarin (Chinese)	386	1,050	1,436	0.7
Cantonese (Chinese)	999	389	1,388	0.7
Vietnamese	425	865	1,290	0.6
Russian	124	1,161	1,285	0.6
Korean	67	1,087	1,154	0.6
French	240	774	1,014	0.5
Assyrian (Syriac/Aramaic)	250	624	874	0.4
Hindi	105	734	839	0.4
Telugu (Telegu)	49	728	777	0.4
Japanese	38	576	614	0.3
Ukrainian	251	363	614	0.3
Romanian	130	382	512	0.2
Bulgarian	65	446	511	0.2
Nepali	238	272	510	0.2
Other: Unidentified	190	737	927	0.4
Other: Identified	2,281	7,569	9,850	4.7
Enrollment Totals	70,554	137,205	207,759	100.0

**Reasons for Exiting Limited English Proficient Programs
2013-14
(105 ILCS 5/1A-4)**

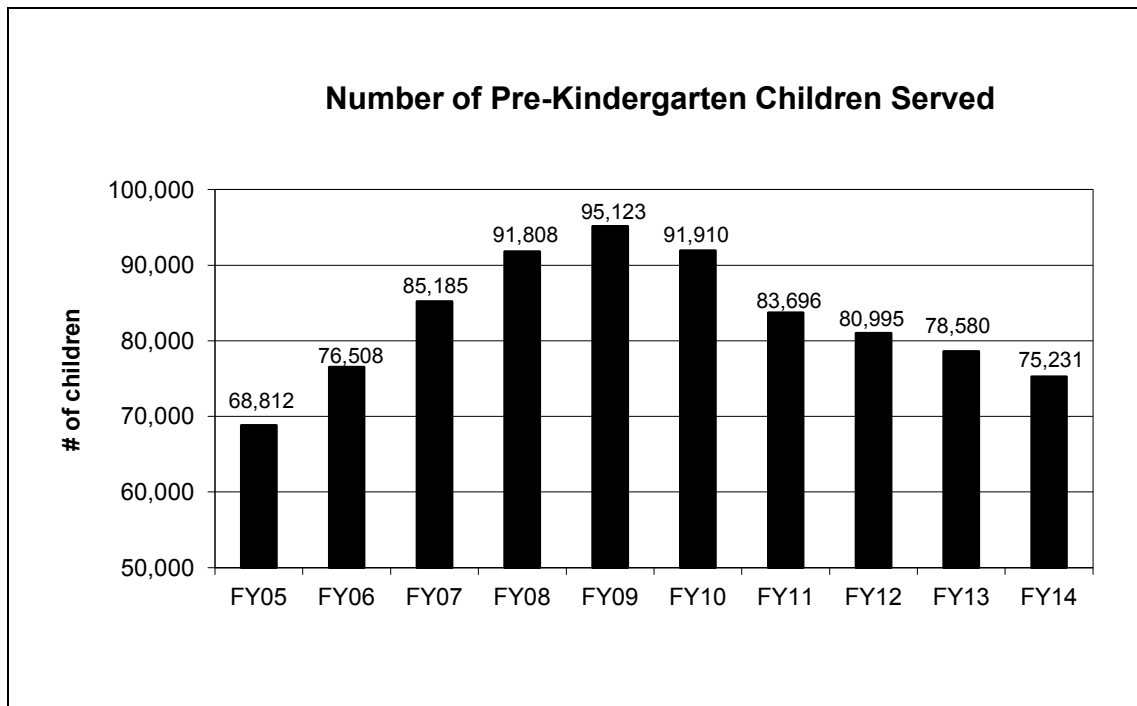
Reason for Exiting the Program	Chicago SD 299 Number	Non-Chicago Number	State Total Number	%
Transitioned	6,203	15,380	21,583	60.9
Withdrawn by Parents	150	2,027	2,177	6.1
Transferred	2,176	5,248	7,424	21.0
Graduated	819	1,156	1,975	5.6
Dropped out	345	876	1,221	3.4
Other	6	1,025	1,031	2.9
Total Exited	9,699	25,712	35,411	17.0
Have Not Exited	60,855	111,493	172,348	83.0
Total Students	70,554	137,205	207,759	100.0

**School Districts That Served More Than 1,000 Limited English Proficient Students
2013-14**

School District Name	Number	% of Statewide LEP Enrollment
Chicago Public S.D. 299	70,554	34.0
School District U-46 (Elgin)	10,475	5.0
Cicero S.D. 99	6,858	3.3
Aurora East Unit District 131	5,262	2.5
Waukegan C.U.S.D. 60	5,110	2.5
Rockford S.D. 205	3,607	1.7
Schaumburg C.C.S.D. 54	2,997	1.4
Palatine C.C.S.D. 15	2,710	1.3
Wheeling C.C.S.D. 21	2,480	1.2
C.U.S.D. 300 (Carpentersville)	2,445	1.2
West Chicago Elementary S.D. 33	2,407	1.2
C.C.S.D. 59 (Arlington Heights)	2,406	1.2
Joliet Public S.D. 86	2,338	1.2
Valley View C.U.S.D. 365U	2,322	1.1
Aurora West Unit S.D. 129	2,175	1.1
Round Lake S.D. 116	1,903	0.9
Indian Prairie C.U.S.D. 204	1,834	0.9
Plainfield S.D. 202	1,771	0.9
C.C.S.D. 62 (Des Plaines)	1,581	0.8
Maywood-Melrose Park-Broadview S.D. 89	1,432	0.7
Addison S.D. 4	1,330	0.6
East Maine S.D. 63	1,262	0.6
C.U.S.D. 200 (Wheaton)	1,233	0.6
Burbank S.D. 111	1,051	0.5
Berwyn South S.D. 100	1,036	0.5

Limited English Proficient Enrollment

	2009-10	2010-11	2011-12	2012-13	2013-14
Chicago District 299	53,105	67,354	69,689	69,443	70,554
Non-Chicago	<u>130,417</u>	<u>130,034</u>	<u>137,728</u>	<u>138,258</u>	<u>137,205</u>
Total Served	183,522	197,388	207,417	207,701	207,759



Note: Enrollment includes private and nonprofit organizations that receive grants.

**High School Graduates
(105 ILCS 5/2-3.11)**

School Year	Public	Nonpublic	Total
2013-14	139,056	15,598	154,654
2012-13	*	14,230	*
2011-12	134,260	17,514	151,774
2010-11	132,648	17,038	149,686
2009-10	139,870	17,038	156,908
2008-09	132,123	15,970	148,093
2007-08	135,143	16,271	151,414
2006-07	130,220	16,706	146,926
2005-06	127,349	13,995	141,344
2004-05	123,615	13,850	137,465

* 2012-13 public data not available.

Note: Nonpublic schools report data voluntarily on an annual basis.

Data sources: Student Information System; Nonpublic Registration, Enrollment and Staff Report.

**2013-14 High School Dropout Rate by Grade Level, Gender, and Race/Ethnicity
(105 ILCS 5/1A-4)**

	9th Male	Grade Female	10th Male	Grade Female	11th Male	Grade Female	12th Male	Grade Female	Total Male	Female	All
White											
# of Dropouts	300	193	512	327	906	603	1,069	696	2,787	1,819	4,606
Statewide Enroll	43,127	39,982	41,977	39,710	41,896	39,702	41,359	39,506	168,359	158,900	327,259
DROPOUT RATE	0.70%	0.48%	1.22%	0.82%	2.16%	1.52%	2.58%	1.76%	1.66%	1.14%	1.41%
Black-African Am											
# of Dropouts	622	382	886	838	624	524	413	316	2,545	2,060	4,605
Statewide Enroll	16,537	15,079	14,862	14,505	13,042	13,465	11,449	12,250	55,890	55,299	111,189
DROPOUT RATE	3.76%	2.53%	5.96%	5.78%	4.78%	3.89%	3.61%	2.58%	4.55%	3.73%	4.14%
Am Indian-Alaskan											
# of Dropouts	7	1	6	4	5	5	4	5	22	15	37
Statewide Enroll	277	230	253	223	205	230	198	193	933	876	1,809
DROPOUT RATE	2.53%	0.43%	2.37%	1.79%	2.44%	2.17%	2.02%	2.59%	2.36%	1.71%	2.05%
Asian											
# of Dropouts	10	7	17	9	16	12	34	18	77	46	123
Statewide Enroll	3,365	3,255	3,425	3,350	3,464	3,394	3,465	3,304	13,719	13,303	27,022
DROPOUT RATE	0.30%	0.22%	0.50%	0.27%	0.46%	0.35%	0.98%	0.54%	0.56%	0.35%	0.46%
Native Hawaiian- Pacific Islander											
# of Dropouts	0	0	2	0	0	3	3	0	5	3	8
Statewide Enroll	85	84	82	97	68	92	69	69	304	342	646
DROPOUT RATE	0.00%	0.00%	2.44%	0.00%	0.00%	3.26%	4.35%	0.00%	1.64%	0.88%	1.24%
Hispanic											
# of Dropouts	373	221	681	489	618	467	606	339	2,278	1,516	3,794
Statewide Enroll	20,060	18,597	18,738	17,628	16,529	16,249	14,911	14,693	70,238	67,167	137,405
DROPOUT RATE	1.86%	1.19%	3.63%	2.77%	3.74%	2.87%	4.06%	2.31%	3.24%	2.26%	2.76%
Multiracial											
# of Dropouts	33	24	42	46	58	47	48	38	181	155	336
Statewide Enroll	2,383	2,259	2,190	2,102	1,873	1,920	1,758	1,734	8,204	8,015	16,219
DROPOUT RATE	1.38%	1.06%	1.92%	2.19%	3.10%	2.45%	2.73%	2.19%	2.21%	1.93%	2.07%
Totals											
# of Dropouts	1,345	828	2,146	1,713	2,227	1,661	2,177	1,412	7,895	5,614	13,509
Statewide Enroll	85,834	79,486	81,527	77,615	77,077	75,052	73,209	71,749	317,647	303,902	621,549
DROPOUT RATE	1.57%	1.04%	2.63%	2.21%	2.89%	2.21%	2.97%	1.97%	2.49%	1.85%	2.17%
Special Populations	All LEP		All Migrant		All F&RL		All IEP				
# of Dropouts	592		9		9,889		3,316				
Statewide Enroll	18,747		130		281,939		83,455				
DROPOUT RATE	3.16%		6.92%		3.51%		3.97%				

Data sources:

Number of dropouts by grade level, gender, and race/ethnicity: Student Identifier System (SIS) Exit Codes 09, 10, 11, 14.

Statewide fall enrollment, Special Populations (Limited English Proficiency, Migrant, Free/Reduced Lunch, Individualized Education Plan): SIS.

Selected School Report Card Variables and Statewide Trend Data
(105 ILCS 5/1A-4 & 5/2-3.11)

Report Card Variable	2004-05	2005-06	2006-07	2007-08	2008-09	2009-10	2010-11	2011-12	2012-13	2013-14
Enrollment Percentage										
White	56.7%	55.7%	54.9%	54.0%	53.3%	52.8%	51.4%	51.0%	50.6%	49.9%
Black	20.3%	19.9%	19.6%	19.2%	19.1%	18.8%	18.3%	18.0%	17.6%	17.5%
Hispanic	18.3%	18.7%	19.3%	19.9%	20.8%	21.1%	23.0%	23.6%	24.1%	24.6%
Asian/Pacific Islander	3.7%	3.8%	3.8%	3.9%	4.1%	4.2%	4.2%	4.2%	4.3%	4.6%
Native American	0.2%	0.2%	0.2%	0.2%	0.2%	0.2%	0.3%	0.3%	0.3%	0.3%
Two or More Races	0.7%	1.8%	2.2%	2.7%	2.5%	2.9%	2.8%	2.8%	3.1%	3.1%
Total Enrollment	2,062,912	2,075,277	2,077,856	2,074,167	2,070,125	2,064,312	2,074,806	2,066,692	2,054,155	2,046,857
Oper Expend Per Pupil ^a	\$8,786	\$9,099	\$9,488	\$9,907	\$10,417	\$11,197	\$11,537	\$11,664	\$11,842	\$12,040
Graduation Rate	87.4%	87.8%	85.9%	86.5%	87.1%	87.8%	83.8%	82.3%	83.2%	86.0%
Low-Income Enrollment	40.0%	40.0%	40.9%	41.1%	42.9%	45.4%	48.1%	49.0%	49.9%	51.5%
LEP Enrollment	6.6%	6.6%	7.2%	7.5%	8.0%	7.6%	8.8%	9.4%	9.5%	9.5%
Dropout Rate	4.0%	3.5%	3.5%	4.1%	3.5%	3.8%	2.7%	2.5%	2.4%	2.2%
Chronic Truancy Rate	2.2%	2.2%	2.5%	2.5%	3.7%	3.6%	3.2%	8.6%	9.8%	8.7%
Mobility Rate	16.1%	16.0%	15.2%	14.9%	13.5%	13.0%	12.8%	13.1%	12.8%	12.3%
Student Attendance Rate	93.9%	94.0%	93.7%	93.3%	93.7%	93.9%	94.0%	94.4%	94.2%	94.5%
Parental Contact	95.7%	96.6%	96.1%	96.8%	96.7%	96.2%	96.0%	95.3%	95.5%	95.7%
Average Class Size										
Kindergarten	20.9	20.9	20.9	20.5	20.5	20.7	20.9	20.9	21.1	21.2
Gr 1	21.5	21.5	21.0	21.0	20.9	21.2	21.6	21.2	21.5	21.6
Gr 3	22.3	22.1	21.8	21.7	21.8	22.1	22.3	22.0	21.9	22.5
Gr 6	23.4	23.4	22.6	22.2	22.0	21.5	22.0	22.4	23.1	23.1
Gr 8	22.9	22.7	21.9	21.5	21.4	21.0	21.3	21.5	22.2	22.6
High School	19.7	19.7	18.9	19.6	19.2	19.7	19.2	19.2	19.9	19.4

Note: Beginning in 2009, district statistics include charter school information.

^a Prior year expenditures

STUDENT PERFORMANCE

Students are placed in performance levels based on their scores on the Illinois Standards Achievement Test (ISAT) and the Prairie State Achievement Exam (PSAE). The cut-off scores for these levels were established with the help of Illinois elementary and secondary educators. Shown below is the percentage of students meeting and exceeding standards for ISAT and PSAE.

Statewide Average Percent Meets/Exceeds Standards

ISAT Reading	<u>2012</u>	<u>2013</u>	<u>2014</u>
Grade 3	76.1	58.8	55.3
Grade 4	76.0	59.2	56.4
Grade 5	77.8	58.9	58.2
Grade 6	81.7	58.9	57.3
Grade 7	78.1	58.4	59.4
Grade 8	86.2	59.8	56.3
ISAT Mathematics			
Grade 3	87.7	54.9	55.6
Grade 4	88.1	60.2	63.5
Grade 5	83.6	59.4	64.4
Grade 6	85.0	59.6	60.1
Grade 7	84.6	59.0	57.7
Grade 8	85.0	58.9	59.9
ISAT Science			
Grade 4	79.8	81.0	76.3
Grade 7	79.9	79.9	79.9
PSAE Reading			
Grade 11	50.7	54.8	56.3
PSAE Mathematics			
Grade 11	51.6	51.8	52.4
PSAE Science			
Grade 11	51.7	49.3	49.6

Note: Cut scores for reading and mathematics were raised in 2013, resulting in a downward shift in the number of students who meet/exceed standards.

The Illinois Alternate Assessment (IAA) is the yardstick the state uses to measure the learning of students with the most significant cognitive disabilities. Students take the IAA if participation in the state's regular assessments – the Illinois Standards Achievement Test (ISAT) or the Prairie State Achievement Examination (PSAE) – is not appropriate, even with accommodations.

The IAA is a performance-based assessment that uses on-demand tasks that are aligned to the Illinois Learning Standards. The IAA is based on alternate achievement standards in reading, mathematics, science and writing at the grades corresponding to ISAT and PSAE.

Students are placed in performance levels based on their scores, which were established with the help of Illinois elementary and secondary educators. Shown below is the percentage of students at satisfactory and mastery levels for the IAA.

IAA Statewide Average Percent at Satisfactory/Mastery Levels

IAA Reading	<u>2012</u>	<u>2013</u>	<u>2014</u>
Grade 3	48.6	54.2	40.1
Grade 4	52.8	52.3	37.8
Grade 5	54.3	57.9	40.7
Grade 6	62.5	65.8	38.0
Grade 7	65.1	62.0	38.3
Grade 8	69.5	69.0	39.0
Grade 11	71.3	67.6	41.6
IAA Mathematics			
Grade 3	57.6	59.1	40.0
Grade 4	67.9	65.2	42.5
Grade 5	63.4	62.5	41.3
Grade 6	74.0	73.9	41.6
Grade 7	73.8	70.8	39.3
Grade 8	72.0	74.9	40.6
Grade 11	74.1	76.5	41.9
IAA Science			
Grade 4	65.5	67.2	64.6
Grade 7	75.1	76.3	77.1
Grade 11	76.3	76.5	72.6

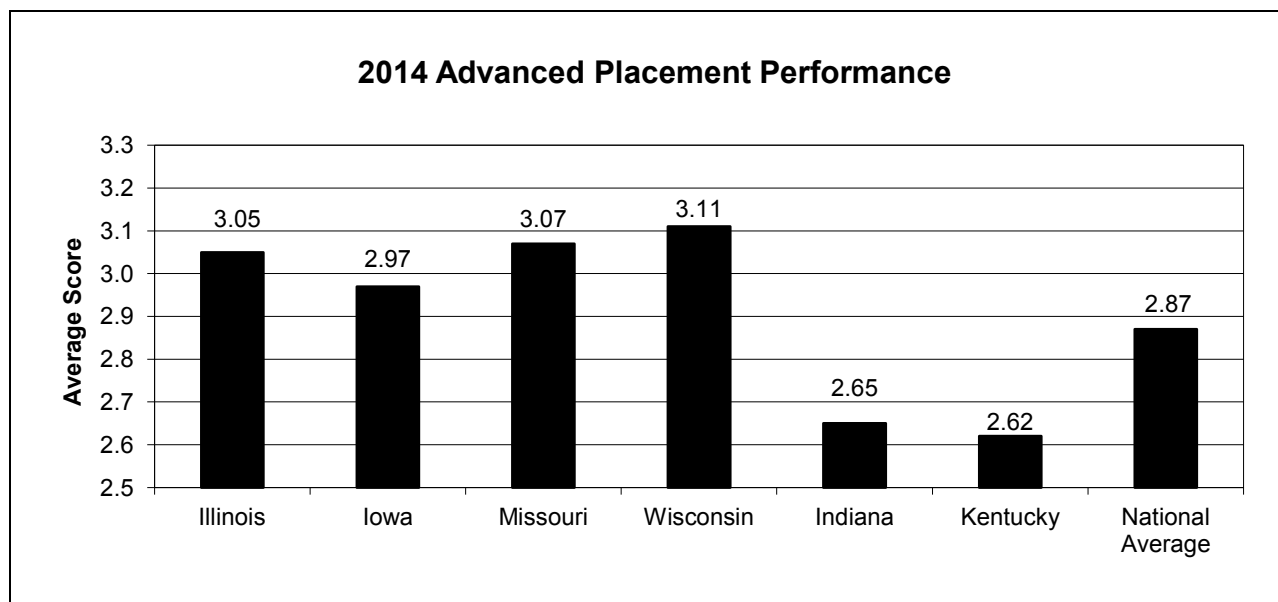
ACT Composite Scores

Illinois	Composite	English	Mathematics	Reading	Science	Students Tested
2013-14	20.7	20.3	20.7	20.8	20.5	158,037
2012-13	20.6	20.2	20.7	20.4	20.5	160,066
2011-12	20.9	20.5	21.0	20.7	20.8	146,822
2010-11	20.9	20.6	20.9	20.8	20.7	144,469
2009-10	20.7	20.3	20.7	20.8	20.5	145,520

National	Composite	English	Mathematics	Reading	Science	Students Tested
2013-14	21.0	20.3	20.9	21.3	20.8	1,845,787
2012-13	20.9	20.2	20.9	21.1	20.5	1,799,243
2011-12	21.1	20.5	21.1	21.3	20.9	1,666,017
2010-11	21.1	20.6	21.1	21.3	20.9	1,623,112
2009-10	21.0	20.5	21.0	21.3	20.9	1,568,835

Note: All eligible Illinois public school students take the ACT in Grade 11 as part of the Prairie State Achievement Exam (PSAE).

Data source: ACT National and State Scores for 2014.



Data source: 2014 College Board AP Summary Reports.

**National Assessment of Educational Progress (NAEP) “The Nation’s Report Card”
Average Student Scores for Illinois and U.S. Public Schools**

	<u>2007</u>	<u>2009</u>	<u>2011</u>	<u>2013</u>
Reading				
Illinois Grade 4	219	219	219	219
U.S. Grade 4	220	220	220	221
Illinois Grade 8	263	265	266	267
U.S. Grade 8	261	262	264	266
Math				
Illinois Grade 4	237	238	239	239
U.S. Grade 4	239	239	240	241
Illinois Grade 8	280	282	283	285
U.S. Grade 8	280	282	283	284
Science				
Illinois Grade 4	n/a	148	n/a	n/a
U.S. Grade 4	n/a	149	n/a	n/a
Illinois Grade 8	n/a	148	147	n/a
U.S. Grade 8	n/a	149	151	n/a

Data source: National Center for Education Statistics, Institute of Educational Sciences.

Comparison of Illinois and U.S. Achievement Gaps

	2013 Reading		2013 Math		2009 Science	
	<u>Illinois</u>	<u>U.S.</u>	<u>Illinois</u>	<u>U.S.</u>	<u>Illinois</u>	<u>U.S.</u>
Grade 4						
White	231	232	248	250	164	163
Black	199	206	220	224	120	127
Hispanic	204	207	229	231	129	131
Asian/Pacific Islander	242	235	266	258	166	160
American Indian/ Alaska Native	*	205	*	227	*	135
Two or More Races	221	227	246	245	152	154

* Reporting standards not met.

Note: 2009 data are the most recent for grade 4 science.

Data source: National Center for Education Statistics, Institute of Educational Sciences.

**National Assessment of Educational Progress (NAEP) “The Nation’s Report Card”
Comparison of Illinois and U.S. Achievement Gaps**

	2013 Reading		2013 Math		2011 Science	
Grade 8	<u>Illinois</u>	<u>U.S.</u>	<u>Illinois</u>	<u>U.S.</u>	<u>Illinois</u>	<u>U.S.</u>
White	276	276	296	294	161	163
Black	246	250	260	263	120	129
Hispanic	257	256	272	272	135	137
Asian/Pacific Islander	285	280	313	306	163	161
American Indian/ Alaska Native	*	251	*	269	*	141
Two or More Races	270	271	285	288	*	156

	2013 Reading		2013 Math	
Grade 12	<u>Illinois</u>	<u>U.S.</u>	<u>Illinois</u>	<u>U.S.</u>
White	299	297	165	162
Black	267	268	123	123
Hispanic	278	276	143	141
Asian/Pacific Islander	302	296	180	172
American Indian/ Alaska Native	*	277	*	142
Two or More Races	*	291	*	155

* Reporting standards not met.

Note: 2011 data are the most recent for grade 8 science.

Data source: National Center for Education Statistics, Institute of Educational Sciences.

EDUCATORS

Number of Selected Full-Time Public School Personnel by Gender 2013-14 (105 ILCS 5/2-3.11)

Staff Category	Male	Female	Total
Pre-Kindergarten Teachers	32	1,184	1,216
Kindergarten Teachers	85	3,192	3,277
Elementary Teachers (1-8)	11,389	57,835	69,224
Secondary Teachers (9-12)	14,662	17,759	32,421
Ungraded Teachers	226	663	889
Special Education Teachers	2,879	17,404	20,283
District Superintendents	531	205	736
Principals	1,689	1,924	3,613
Assistant Principals	1,052	1,299	2,351
Supervisors	730	1,570	2,300
Other Administrators	912	977	1,889
School Service Personnel	<u>4,163</u>	<u>32,432</u>	<u>36,595</u>
Total Public School Personnel	38,350	136,444	174,794

Nonpublic School Personnel (FTE) 2013-14 (105 ILCS 5/2-3.11)

Staff Category	FTE (Full-Time Equivalent)
Pre-Kindergarten Teachers	1,842.6
Kindergarten Teachers	1,250.9
Elementary Teachers (1-8)	8,660.1
Secondary Teachers (9-12)	4,142.5
Special Education Teachers	350.6
Administrative Staff (includes Principals and Assistant Principals)	2,302.3
Pupil Personnel Services Staff	785.8
Support Staff	4,884.6
Supervisory Staff	<u>750.6</u>
Total Nonpublic Personnel (FTE)	24,970.0

Data source: 2013-14 Nonpublic Registration, Enrollment and Staff Report.

Salaries for Selected Full-Time Public School Personnel 2013-14
(105 ILCS 5/2-3.11)

Staff Category	Median	Mean
Pre-Kindergarten Teachers	\$47,371	\$50,839
Kindergarten Teachers	52,359	55,355
Elementary Teachers (1-8)	57,186	60,810
Secondary Teachers (9-12)	62,818	67,482
Ungraded Teachers	48,290	50,421
Special Education Teachers	57,353	61,574
District Superintendents	138,000	147,580
Principals	99,085	102,504
Assistant Principals	88,000	89,900
Supervisors	92,760	96,786
Other Administrator	89,680	95,339
School Service Personnel	26,580	40,579

Public School Pupil-to-Teacher Ratios

School Year	Elementary	Secondary
2013-14	18.6	18.1
2012-13	18.7	17.9
2011-12	18.9	18.8
2010-11	18.8	18.9
2009-10	18.2	18.2
2008-09	18.4	18.0
2007-08	18.3	18.0
2006-07	18.8	18.8
2005-06	19.1	18.9
2004-05	18.9	18.4

Educator Licenses Issued by Type

Licenses	2009-10	2010-11	2011-12	2012-13	2013-14
Professional Educator	n/a	n/a	n/a	n/a	10,932
Professional Educator with Stipulations	n/a	n/a	n/a	n/a	104,525
Substitute	<u>n/a</u>	<u>n/a</u>	<u>n/a</u>	<u>n/a</u>	<u>7,855</u>
Total	n/a	n/a	n/a	n/a	123,312

Note: Educators were issued certificates prior to FY 2014. An educator licensure system began in FY 2014 and all certificates were converted to licenses.

Educator Certificates/Endorsements Issued By Type (105 ILCS 5/2-3.11)

Certificates/Endorsements	2009-10	2010-11	2011-12	2012-13	2013-14
Elementary	12,194	11,318	6,367	6,416	1,392
Secondary	8,002	7,549	4,176	4,222	4,499
Early Childhood	1,667	1,538	1,116	1,132	1,208
Special	6,429	6,565	4,856	5,649	7,032
School Service	1,879	1,728	1,658	1,866	1,809
Administrative	3,104	2,980	3,006	3,560	3,984
Transitional Bilingual	669	683	536	529	515
Substitute	15,351	11,952	10,478	10,515	7,855
Special Education	n/a	n/a	n/a	n/a	3,029
Other	<u>260</u>	<u>228</u>	<u>211</u>	<u>206</u>	<u>n/a</u>
Total	49,555	44,541	32,404	34,095	31,323

Note: Educators were issued certificates prior to FY 2014. An educator licensure system began in FY 2014 and all certificates were converted to licenses.

Educator Certificates/Licenses Issued By Evaluation, Entitlement & Exchange
(105 ILCS 5/2-3.11)

Licenses Issued	2009-10	2010-11	2011-12	2012-13	2013-14
Evaluation	33,400	28,038	16,692	17,436	5,275
Entitlement	16,155	16,503	15,397	15,811	5,657
Exchange	<u>0</u>	<u>0</u>	<u>315</u>	<u>848</u>	<u>112,380</u>
Total	49,555	44,541	32,404	34,095	123,312

Note: Educators were issued certificates prior to FY 2014. An educator licensure system began in FY 2014 and all certificates were converted to licenses.

Educator Certification/Licensure Tests Administered by Test Fields
(105 ILCS 5/2-3.11d)

Test Field	2009-10	2010-11	2011-12	2012-13	2013-14
Basic Skills and TAP	23,152	15,217	13,233	13,784	11,848
Early Childhood	1,134	1,057	939	773	469
Elementary	6,913	5,821	5,462	4,443	2,813
Special Education - all categories	5,242	5,414	5,118	4,853	1,845
Sciences - all disciplines	1,373	1,129	915	956	583
Math & Computer Science	1,004	832	896	813	441
Foreign Languages - all languages	706	638	566	539	301
English, Speech, Media, Reading, LEP	3,455	3,067	2,594	2,685	1,379
History & Social Science	2,064	1,767	2,272	1,225	770
Art, Music, Theatre, Dance	818	748	738	708	446
Vocational/Technical - all fields	480	443	442	223	187
Health & Physical Education	1,358	1,238	1,166	942	569
School Service Personnel - all fields	1,288	1,176	1,951	2,067	810
Administrative - all types	3,442	3,217	4,625	4,305	1,253
Language Proficiency	1,194	932	1,051	1,005	561
Assessment of Professional Teaching	<u>15,791</u>	<u>14,068</u>	<u>13,457</u>	<u>12,094</u>	<u>7,252</u>
Total	69,414	56,764	55,425	51,415	31,527

Note: Educators were issued certificates prior to FY 2014. An educator licensure system began in FY 2014 and all certificates were converted to licenses.

**National Board-Certified Teachers
Certification Earned in Illinois**

Year	Newly Certified	Percent Change	Cumulative Growth
2013-14	205	-21.5	6,066
2012-13	261	-40.1	5,861
2011-12	436	-5.4	5,600
2010-11	461	-40.2	5,164
2009-10	771	5.3	4,703
2008-09	732	4.1	3,932
2007-08	703	37.6	3,200
2006-07	511	18.6	2,497
2005-06	431	36.8	1,986
2004-05	315	-24.2	1,555
2003-04	413	n/a	1,240
1993-2003	827	n/a	827

**Expenditures to National Board-Certified Teachers
For Mentoring, Registrations and Annual Stipends**

Year	Mentoring	Registrations	Annual Stipends	Total
2013-14	\$0	\$1,000,000	\$0	\$1,000,000
2012-13	0	1,000,000	0	1,000,000
2011-12	0	1,000,000	0	1,000,000
2010-11	0	0	2,756,400	2,756,400
2009-10	0	0	5,740,730	5,740,730
2008-09	2,616,000	667,000	8,202,000	11,485,000
2007-08	1,273,500	2,866,960	6,294,000	10,434,460
2006-07	783,000	2,183,500	5,164,109	8,130,609
2005-06	730,000	0	3,874,995	4,604,995
2004-05	530,865	834,135	3,240,000	4,605,000
2003-04	393,000	1,733,990	2,172,000	4,298,990
1993-2003	372,500	1,495,600	2,448,000	4,316,100

Note: Public Act 097-0607 eliminated the annual stipend for Illinois Master Certificate holders effective July 1, 2011.

SPECIAL EDUCATION SERVICES

Students with Disabilities Receiving Special Education Services Ages 3-21 Unduplicated Count (105 ILCS 5/2-3.11)

Disability Category	2009-10	2010-11	2011-12	2012-13	2013-14
Cognitive Disability (MR)	22,122	20,696	18,963	18,765	17,773
Orthopedic Impairment	2,053	1,930	1,772	1,657	1,515
Specific Learning Disability	124,414	116,966	108,386	105,338	102,737
Visual Impairment	1,185	1,189	1,176	1,175	1,125
Hearing Impairment	3,368	3,308	3,262	3,238	3,145
Deafness	667	667	599	621	608
Deaf-Blind	39	33	22	31	34
Speech/Language	68,213	64,469	61,685	59,649	56,804
Emotional Disturbance	23,876	22,152	20,747	20,205	19,602
Other Health Impairment	26,556	27,045	28,081	29,477	31,246
Multiple Disabilities	2,014	2,139	2,288	2,423	2,553
Developmental Delay	22,044	25,081	27,246	29,890	31,501
Autism	15,224	16,432	17,895	19,290	20,506
Traumatic Brain Injury	<u>758</u>	<u>723</u>	<u>722</u>	<u>733</u>	<u>738</u>
Total	312,533	302,830	292,844	292,492	289,887

Students with Disabilities by Gender Ages 3-21 Unduplicated Count (105 ILCS 5/2-3.11)

Gender	2009-10	2010-11	2011-12	2012-13	2013-14
Male	208,777	202,460	196,275	196,044	194,020
Female	<u>103,756</u>	<u>100,370</u>	<u>96,569</u>	<u>96,448</u>	<u>95,867</u>
Total	312,533	302,830	292,844	292,492	289,887

Students with Disabilities by Race/Ethnic Group
Ages 3-21 Unduplicated Count
(105 ILCS 5/2-3.11)

Ethnic Groups	2009-10	2010-11	2011-12	2012-13	2013-14
White	177,782	n/a	n/a	n/a	n/a
Black	69,878	n/a	n/a	n/a	n/a
Hispanic	58,069	n/a	n/a	n/a	n/a
Asian or Pacific Islander	6,172	n/a	n/a	n/a	n/a
American Indian/Alaskan Native	<u>632</u>	<u>n/a</u>	<u>n/a</u>	<u>n/a</u>	<u>n/a</u>
Total	312,533	n/a	n/a	n/a	n/a

Race/Ethnicity Groups	2009-10	2010-11	2011-12	2012-13	2013-14
Hispanic or Latino	n/a	59,864	58,913	60,939	61,292
American Indian or Alaska Native	n/a	1,238	1,204	1,227	1,461
Asian	n/a	5,929	5,986	6,180	6,470
Black or African American	n/a	63,851	60,374	60,607	59,548
Native Hawaiian or Other Pacific Islander	n/a	357	359	362	387
White	n/a	163,455	157,853	154,577	151,693
Two or More Races	<u>n/a</u>	<u>8,136</u>	<u>8,155</u>	<u>8,600</u>	<u>9,036</u>
Total	n/a	302,830	292,844	292,492	289,887

Note: Federal Race and Ethnicity Categories changed in the 2010-11 school year.

Students with Disabilities by Age
Unduplicated Count
(105 ILCS 5/2-3.11)

Age	2009-10	2010-11	2011-12	2012-13	2013-14
3	9,034	8,634	8,826	9,171	9,122
4	12,835	12,777	12,781	12,982	12,933
5	15,534	15,077	15,322	15,365	15,323
6	17,441	17,108	16,662	17,117	17,037
7	18,998	18,757	18,364	18,187	18,556
8	21,329	20,050	19,995	19,847	19,638
9	22,337	21,598	20,357	20,684	20,784
10	22,505	22,019	21,273	20,697	20,797
11	22,733	21,694	21,033	21,008	20,304
12	22,099	21,940	20,918	20,873	20,572
13	22,053	21,453	21,067	20,744	20,526
14	22,247	21,267	20,084	20,542	19,973
15	22,938	21,567	20,122	20,140	20,204
16	22,776	21,841	20,279	19,759	19,743
17	20,857	20,348	19,412	18,824	18,127
18	11,204	10,994	10,472	10,381	9,918
19	3,234	3,246	3,213	3,175	3,269
20	1,483	1,558	1,609	1,784	1,774
21	<u>896</u>	<u>902</u>	<u>1,055</u>	<u>1,212</u>	<u>1,287</u>
Total	312,533	302,830	292,844	292,492	289,887

Students with Disabilities Exiting School
Ages 14-21 Unduplicated Count
(105 ILCS 5/2-3.11)

Reason for Exiting School	2009-10	2010-11	2011-12	2012-13	2013-14*
Returned to Regular Education	2,820	3,070	2,706	2,642	*
High School Diploma	12,629	15,501	14,016	13,686	*
Certificate of Completion	783	145	158	164	*
Reached Maximum Age	395	354	504	503	*
Died	76	70	49	74	*
Moved, Continuing School	9,661	8,554	7,444	6,212	*
Dropped Out of School	<u>2,969</u>	<u>3,603</u>	<u>2,559</u>	<u>2,773</u>	*
Total	29,333	31,297	27,436	26,054	*

* 2013-14 data available 2015.

Students with Disabilities by Primary Language
Ages 3-21 Unduplicated Count
(105 ILCS 5/2-3.11)

Primary Language	2009-10	2010-11	2011-12	2012-13	2013-14
English	283,850	273,287	263,091	260,326	256,179
Arabic	405	471	481	536	578
Mandarin (Chinese)	57	62	64	63	80
Cantonese (Chinese)	176	168	162	168	171
French	46	45	52	50	68
German	5	10	12	14	21
Greek	32	42	55	60	56
Hindi	33	39	45	44	50
Italian	43	37	41	44	35
Japanese	19	27	27	34	31
Korean	52	54	61	70	77
Lithuanian	16	24	34	34	32
Pilipino (Tagalog)	143	151	176	194	195
Polish	625	667	688	768	793
Croatian	14	11	11	9	8
Spanish	25,532	26,205	26,216	28,258	29,479
Vietnamese	128	143	140	154	160
Others	733	751	790	891	1,034
Assyrian (Syriac/Aramaic)	77	72	80	92	93
Cambodian	33	32	28	26	26
Gujarati	86	93	108	129	139
Lao	10	10	14	15	14
Romanian	62	57	59	53	64
Russian	78	82	89	99	122
Urdu	234	247	277	316	346
American Sign Language	<u>44</u>	<u>43</u>	<u>43</u>	<u>45</u>	<u>36</u>
Total	312,533	302,830	292,844	292,492	289,887

**Students with Disabilities Receiving Related and Other
Special Education Services
Ages 3-21 Duplicated Count
(105 ILCS 5/2-3.11)**

Related and Other Services	2009-10	2010-11	2011-12	2012-13	2013-14
Adapted Physical Education	7,568	7,284	7,108	6,871	6,690
Aide - Class	56,711	53,241	51,123	48,934	46,542
Aide - Individual Student	12,606	14,138	14,463	14,735	15,033
Art Therapy	332	279	261	243	256
Audiology	3,451	3,319	3,289	3,325	3,275
Brailist/Reader	91	100	98	114	93
Counseling Services	11,689	11,834	11,909	12,208	12,289
Consultant Services	2,609	2,486	2,471	2,402	2,178
Adapted Driver Education	24	13	16	9	9
Interpreter Services	2,974	1,095	1,092	1,066	1,001
Assistive Device	6,797	19,914	18,915	18,700	16,528
Music Therapy	461	485	553	452	368
Occupational Therapy	41,849	42,445	43,626	44,949	46,126
Outdoor Education	62	53	63	67	60
Orientation and Mobility	914	897	782	795	783
Other Related Services	4,460	4,219	3,906	3,873	3,755
Parent Counseling	454	406	347	324	310
Psychological Services	3,701	3,084	2,998	3,273	3,251
Physical Therapy	13,029	13,013	13,040	13,173	13,015
Psychiatric Services	986	504	482	536	578
Recreation	210	188	134	113	120
School Health Services	13,251	12,346	12,937	13,877	14,267
Speech/Language Services	71,369	74,229	76,930	79,857	83,193
Social Work Services	76,887	74,992	74,315	75,974	78,007
Transportation (Special)	64,466	62,340	61,155	61,000	61,856
Behavioral Intervention Plan	16,529	19,491	19,462	18,981	17,623
Career and Technical Education	4,011	2,339	1,853	1,546	1,385
Transition/STEP by Div of Rehab Services	11,655	22,059	20,384	21,695	21,736
Competitive Employment	399	289	234	190	200
Travel Training	182	174	113	121	189
Acquisition of Daily Living Skills	1,260	832	847	807	950
Supported Employment	327	375	334	339	366
Supports for Transition to Post-Sec. Ed.	2,960	2,342	2,224	2,139	2,201
Interagency Linkages	745	727	760	724	730
Students reported with no related services	130,118	116,609	110,365	106,402	105,658

Note: This chart states the number of related and other services reported for eligible students by school districts. One student could be reported as receiving up to eight services.

Educational Placement of Children with Disabilities
(105 ILCS 5/2-3.11)

Ages 3-5 Unduplicated Count

Educational Environment	2009-10	2010-11	2011-12	2012-13	2013-14
Early Childhood Program at least 80% of time	19,154	n/a	n/a	n/a	n/a
Early Childhood Program 40%-79% of time	2,304	n/a	n/a	n/a	n/a
Early Childhood Program less than 40% of time	3,544	n/a	n/a	n/a	n/a
Regular Early Childhood Program: At least 10 hours per week and receiving the majority of Spec. Ed. and related services in the regular Early Childhood Program	n/a	9,983	11,021	11,474	11,793
Regular Early Childhood Program: At least 10 hours per week and receiving the majority of hours of Spec. Ed. and related services in some other location	n/a	7,540	7,852	8,303	8,892
Regular Early Childhood Program: Less than 10 hours per week and receiving the majority of hours of Spec. Ed. and related services in the regular Early Childhood Program	n/a	1,230	884	837	820
Regular Early Childhood Program: Less than 10 hours per week and receiving the majority of hours of Spec. Ed. and related services in some other location	n/a	2,021	2,101	1,973	1,454
Separate Class	7,866	11,030	10,568	10,169	9,840
Separate School	1,180	947	966	1,100	1,080
Residential Facility	11	9	6	3	8
Home	155	84	91	96	92
Service Provider Location	<u>3,189</u>	<u>3,644</u>	<u>3,440</u>	<u>3,563</u>	<u>3,399</u>
Total Ages 3-5	37,403	36,488	36,929	37,518	37,378

Note: The Office of Special Education changed data reporting for preschool students.

Educational Placement of Children with Disabilities
(105 ILCS 5/2-3.11)

Ages 6-21 Unduplicated Count

Educational Environment	2009-10	2010-11	2011-12	2012-13	2013-14
Inside Regular Class 80% or more of day	139,143	138,387	134,066	134,381	133,910
Inside Regular Class 40-79% of day	69,561	68,309	65,408	65,831	65,493
Inside Regular Class less than 40% of day	46,060	39,760	36,896	34,388	33,255
Separate School	14,496	14,109	13,925	14,695	14,375
Residential Facility	1,053	1,074	1,118	1,187	1,221
Homebound/Hospital	623	400	387	394	405
Correctional Facilities/ Detention Programs	456	384	292	238	233
Parentally Placed in Private Schools	<u>3,738</u>	<u>3,919</u>	<u>3,823</u>	<u>3,860</u>	<u>3,617</u>
Total Ages 6-21	275,130	266,342	255,915	254,974	252,509

Teachers Employed to Provide Special Education Services (FTE)
(105 ILCS 5/2-3.11)

	2009-10	2010-11	2011-12	2012-13	2013-14
Teachers for Ages 3-5 (Highly Qualified)	1,506.4	1,535.6	1,504.0	1,555.6	*
Teachers for Ages 3-5 (Not Highly Qualified)	1.0	1.0	2.0	3.5	*
Teachers for Ages 6-21 (Highly Qualified)	21,172.2	20,766.1	20,240.2	22,223.5	*
Teachers for Ages 6-21 (Not Highly Qualified)	<u>12.0</u>	<u>6.0</u>	<u>3.8</u>	<u>31.0</u>	<u>*</u>
Total Special Education Teachers	22,691.6	22,308.7	21,750.0	23,813.7	*

* 2013-14 data available 2015.

Paraprofessionals Employed to Provide Special Education Services (FTE)
(105 ILCS 5/2-3.11)

	2009-10	2010-11	2011-12	2012-13	2013-14
Paraprofessionals for Ages 3-5 (Highly Qualified)	3,536.6	3,482.9	3,409.3	3,652.4	*
Paraprofessionals for Ages 3-5 (Not Highly Qualified)	0.0	0.0	0.0	0.0	*
Paraprofessionals for Ages 6-21 (Highly Qualified)	28,139.0	27,262.3	32,515.9	35,206.7	*
Paraprofessionals for Ages 6-21 (Not Highly Qualified)	<u>0.0</u>	<u>0.0</u>	<u>0.0</u>	<u>0.0</u>	<u>-</u>
Total Special Education Paraprofessionals	31,675.6	30,745.2	35,925.2	38,859.1	*

* 2013-14 data available 2015.

Special Education and Related Services Personnel (FTE)
(105 ILCS 5/2-3.11)

	2009-10	2010-11	2011-12	2012-13	2013-14
Audiologists	39.7	37.4	35.1	34.5	*
Speech-Language Pathologists	3,666.6	3,627.2	3,667.7	3,852.3	*
Interpreters	134.0	157.6	200.4	230.5	*
Psychologists	2,048.5	2,037.3	2,068.8	2,157.7	*
Occupational Therapists	967.9	961.0	981.9	982.2	*
Physical Therapists	366.8	359.0	368.2	365.5	*
Physical Education Teachers/ Therapeutic Recreation Specialists	204.0	198.9	206.6	212.2	*
Social Workers	3,505.1	3,383.8	3,365.7	3,394.4	*
Medical/Nursing Service Staff Counselors & Rehabilitation Counselors	733.4	688.0	661.5	685.9	*
	477.8	453.4	501.8	637.1	*
Orientation & Mobility Specialists	<u>27.7</u>	<u>27.1</u>	<u>24.8</u>	<u>29.3</u>	<u>-</u>
Total Related Services Personnel	12,171.7	11,930.7	12,082.5	12,581.7	*

* 2013-14 data available 2015.

Mandated Categorical Grants Rate Analysis
(105 ILCS 5/2-3.104)

Program	Reimbursement Rate (amount)	School Code Reference	Last Rate Change to School Code
Illinois Free Lunch/ Breakfast	\$0.15 per meal	105 ILCS 125	PA76-875 Effective August 1969
Regular Ed. - Orphanage	1.2 weighted per capita multiplied by reported ADA. Demonstrated actual costs above weighted formula are reimbursed to 100%. Separate summer claim reimbursed at actual cost.	105 ILCS 5/18-3	PA95-0793 Effective August 2009
Special Ed. - Funding for Children Requiring Sp. Ed.	Funds distributed at 85% based on ADA and 15% on poverty as used in the most recent GSA claim for each district.	105 ILCS 5/14-7.02(b)	PA95-0705 Effective January 2008
Special Ed. - Orphanage	Actual cost	105 ILCS 5/14-7.03	PA79-797 Effective July 1973
Special Ed. - Personnel Reimbursement	\$9,000 per certified full-time worker; \$3,500 per noncertified worker.	105 ILCS 5/14-13.01(c)	PA95-707 Effective January 2008
Special Ed. - Private Tuition	Actual tuition cost paid less 2 district per capita tuition amounts.	105 ILCS 5/14-7.02	PA80-1405 Effective August 1978
Special Ed. - Summer School	Weighted ADA multiplied by GSA amount per ADA.	105 ILCS 5/18-4.3	PA79-1350 Effective August 1976
Special Ed. - Transportation	80% of allowable cost	105 ILCS 5/14-13.01(b)	Laws of 1965 Effective July 1965
Vocational Ed. Transportation	80% of allowable cost	105 ILCS 5/29-5	Laws of 1961 Effective March 1965
Regular Ed. Transportation	Actual costs less EAV qualifying amount for eligible students (min \$16 per student).	105 ILCS 5/29-5	Laws of 1961 Effective March 1965

Note: ADA: Average Daily Attendance
GSA: General State Aid
EAV: Equalized Assessed Valuation

Teachers' Retirement Systems

The purpose of these funds is to pay the statutorily required state share of the actuarial liability of the Teachers' Retirement System, including the Teachers' Retirement Insurance Program, and to subsidize the Chicago Teachers' Pension Fund (Public Act 88-593).

These funds are appropriated directly to the Teachers' Retirement System and the Chicago Teachers' Pension Fund. The following represent historical appropriation amounts as shown in the Illinois State Budget Books:

Fiscal Year	Non-Chicago System*	Chicago System	Total Appropriations	Pension Fund
2014	\$3,541,031,000	\$0	\$3,541,031,000	\$11,903,000
2013	2,791,200,000	0	2,791,200,000	10,931,000
2012	2,494,094,000	0	2,494,094,000	10,449,000
2011	2,059,013,600	32,522,400	2,091,536,000	10,449,000
2010	913,988,700	32,522,400	946,511,100	5,029,000
2009	1,527,263,000	65,044,700	1,592,307,700	9,800,000
2008	1,109,891,000	65,044,700	1,174,935,700	10,218,000
2007	813,853,500	65,044,700	878,898,200	10,242,000
2006	610,117,700	65,044,700	675,162,400	9,877,000
2005	976,342,000	65,044,700	1,041,386,700	0

*Teachers' Retirement Insurance Program (below) included in the above Non-Chicago System totals for the following fiscal years:

2014	\$90,430,000
2013	86,683,000
2012	87,622,000
2011	85,953,000
2010	79,007,000
2009	75,474,000
2008	68,596,000
2007	75,839,000
2006	75,490,000
2005	69,314,000

Note: Appropriations for FY 2005 through FY 2011 revised to reflect Illinois State Budget Books for FY 2005 through FY 2013.

Data source: Illinois State Budget Books FY 2006 through FY 2015

How Illinois Ranks Among the States*

2013

Public School Enrollment

1	California	6,184,927
5	Illinois	2,083,995
51	District of Columbia	76,017
	<i>National Total</i>	<i>49,380,319</i>

Number of Teachers

1	Texas	327,516
5	Illinois	130,733
51	District of Columbia	6,156
	<i>National Total</i>	<i>3,109,751</i>

Average Teacher Salary (2012-13)

1	New York	\$75,279
13	Illinois	\$59,113
51	South Dakota	\$39,018
	<i>National Average</i>	<i>\$56,103</i>

Per Pupil Expenditure

1	Vermont	\$19,752
15	Illinois	\$12,927
51	Arizona	\$6,949
	<i>National Average</i>	<i>\$10,938</i>

Pupils Enrolled per Teacher (2011-12)

1	California	25.0
13	Illinois	15.9
51	Vermont	6.9
	<i>National Average</i>	<i>15.4</i>

* Includes the District of Columbia

Data source: National Education Association *Rankings and Estimates: Rankings of the States 2013 and Estimates of School Statistics 2014*.

Illinois State Board of Education

2014 ANNUAL REPORT



Published by the Public Information Division, January 2015