



# **ANNUAL REPORT**

## **2015**

**Tony Smith, Ph.D.**  
State Superintendent of Education

**James T. Meeks**  
State Board of Education Chairman



**Illinois**  
**State Board**  
**of Education**

# STATE BOARD OF EDUCATION



**Tony Smith, P.h.D.**  
State Superintendent  
of Education



**James T. Meeks**  
Chairman  
*Chicago*



**Steven R. Gilford**  
Vice Chair  
*Evanston*



**Melinda A. LaBarre**  
Secretary  
*Springfield*

*The State Board of Education consists of nine members who are appointed by the Governor with the consent of the Senate.*

*Board members serve four-year terms, with membership limited to two consecutive terms.*

*The Board appoints the State Superintendent of Education, who may be recommended by the Governor. Currently, there is one vacancy.*



**Curt Bradshaw**  
*Naperville*



**Lula Ford**  
*Chicago*



**Craig Lindvahl**  
*Effingham*



**Eligio Cerda Pimentel**  
*Oak Park*



**John W. Sanders**  
*Marion*

# 2015

## ANNUAL REPORT



## Illinois State Board of Education



January 2016

To the Citizens of Illinois:

The last calendar year was filled with tremendous change for the Illinois State Board of Education (ISBE) as new leadership and new priorities have positioned us to better support districts and in turn better support children and families.

As we began our discussions with staff, we identified five key areas of focus to guide the agency's initiatives:

- Money: Establish an adequate and equitable education finance system.
- Quality: Common definition of, and fair access to, quality education.
- Autonomy: Maximize district autonomy to provide quality education to all families.
- Competency: Encourage competency-based learning
- Community: Districts and schools as centers of healthy communities.

We amended our strategic plan to improve student success in Illinois by refocusing on specific, high-reaching goals that are measurable. ISBE now has a new vision statement and mission:

- **Vision**: Illinois is a state of whole, healthy children nested in whole, healthy systems supporting communities wherein all citizens are socially and economically secure.
- **Mission**: To provide leadership and resources to achieve excellence across all Illinois districts through engaging legislators, school administrators, teachers, students, parents, and other stakeholders in formulating and advocating for policies that enhance education, empower districts, and ensure equitable outcomes for all students.

ISBE has long strived to prepare every student for college and careers once they leave high school. However, we recognized the need to make this goal more personalized and concrete. We must provide access to specific research-based practices and develop a common understanding of what high-quality education means in our state. At the State Superintendent's request, the Board unanimously approved our new agency goals. They are as follows:

- Every child in each public school system in the state of Illinois deserves to attend a system wherein...
  - All kindergarteners are assessed for readiness.
  - 90 percent or more third-grade students are reading at or above grade level.
  - 90 percent or more fifth-grade students meet or exceed expectations in mathematics.
  - 90 percent or more students are on track to graduate with their cohort at the end of ninth-grade.

- 90 percent or more students graduate from high school ready for college and career.
- All students are supported by highly prepared and effective teachers and school leaders.
- Every school offers a safe and healthy learning environment for all students.

These goals are ambitious and we realize that some districts are closer to achieving them than others. ISBE now has an extraordinary opportunity to redesign how to support every public system in Illinois to bring these goals to life.

We need to provide specific and differentiated support for students who are not currently meeting these targets. We will use a data-driven approach to understand the students who are at or above our aspiration and those students who need our help to reach this expectation. The Board must support school districts in unprecedented ways to achieve new outcomes. These indicators will help us better understand the quality of teaching and learning in individual school districts. It will then allow us to pinpoint what targeted supports and resources are needed to close gaps and help every student reach these levels of success.

The Board is committed to creating a problem-solving culture that builds on the good work already occurring and eliminate what's holding our districts back from tapping into our students' full potential. ISBE is now leading a legislative effort to create districts of innovation in Illinois. This initiative is designed to increase districts' autonomy by allowing them to use their tools and resources in ways they know work best for children and families. This will strengthen the capacity for districts and regional offices to serve as peer coaches and mentors. Districts will go through a community process before applying to ensure their proposal represents a community-wide commitment to increase student outcomes through the activities described in their plan. We are taking steps to have this result in a related legislative proposal this spring.

We are also making strides in the ways students are prepared for college and careers. ISBE is continuing to modify all learning standards to focus on real-world application and ensure college and career readiness for all children. Illinois now has a new assessment aligned with the higher expectations of the Illinois Learning Standards, with the new Partnership for Assessment of Readiness for College and Careers (PARCC) test. This test asks a new question: How ready are our children for what's coming next? It also reflects student performance across five new, more nuanced performance levels. The PARCC test is just one of many factors that inform our accountability system. We remain firmly committed to advancing and expanding the supports necessary to ensure that teachers are well-trained, effective, and able to grow as professionals throughout their career.

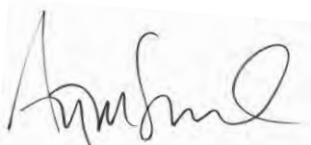
We are truly heartened by the progress we've made to date and believe that the agency is in a great position to truly make a meaningful difference in the lives of children. We are grateful for the support

the Governor and General Assembly are giving our mission. We look forward to working together to provide each child the highest-quality education and opportunities on their path from cradle to career.

Sincerely,

A handwritten signature in black ink that reads "James T. Meeks". The signature is fluid and cursive, with the first letters of each word being capitalized and prominent.

James T. Meeks  
Chairman

A handwritten signature in black ink that reads "Tony Smith". The signature is cursive and stylized, with a large, looping 'A' at the beginning.

Tony Smith, Ph.D.  
State Superintendent

# Table of Contents

Illinois Teacher of the Year.....	1
2015 Condition of Education.....	2
State, Local and Federal Resources .....	7
State, Local and Federal Resources for Elementary and Secondary Education .....	7
Elementary and Secondary School Income From Local Sources .....	8
Net Lottery Proceeds Compared to Total Appropriations to ISBE.....	9
State Revenues by Source .....	10
Appropriations by Major Purpose .....	11
Expenditures by Major Purpose .....	12
State Mandated Categorical Grant Programs .....	13
Public Schools Finance Statistics .....	14
Total Appropriations Per Pupil Enrolled.....	15
State Operating Expense Per Pupil .....	16
Operating Expense Per Pupil by Type of District.....	16
Total Funding .....	17
State Funding .....	17
Local Funding .....	17
Federal Funding .....	17
Percentages of State, Local and Federal Funding .....	18
Foundation Level Funding .....	18
Schools and Districts.....	19
A Profile of Illinois Public Schools in 2014-15.....	19
Illinois Public School Districts by Type .....	21
Comparison of Public School Districts by Type and Enrollment 2004-05 and 2014-15 .....	22
Comparison of Public and Nonpublic Attendance Centers 2004-05 and 2014-15 .....	22
Public School Recognition Committee Act or Omissions Status Report for the 2014-15 School Year .....	23
Interim Superintendents for the 2014-15 School Year .....	26
Students .....	27
Public and Nonpublic Pre-Kindergarten Through Post-Graduate Fall Pupil Enrollment.....	27
Comparison of Public Enrollment 2004-05 and 2014-15.....	28
Comparison of Public School Enrollment by Racial/Ethnic Distribution 2004-05 and 2014-15.....	29



Comparison of Nonpublic School Enrollment 2004-05 and 2014-15 .....	29
Limited English Proficient Enrollment by Native Language 2014-15 .....	30
English Learner Students by Transition Status and School Year Outcome 2014-15.....	31
School Districts That Served More Than 1,000 Limited English Proficient Students 2014-15.....	32
Limited English Proficient Enrollment.....	32
Number of Children Served by Preschool for All (PFA) State-Funded Programs.....	33
High School Graduates .....	33
2014-15 High School Dropout Rate by Grade Level, Gender, and Race/Ethnicity .....	34
Selected School Report Card Variables Statewide Trend Data .....	35
<b>Student Performance .....</b>	<b>36</b>
Partnership for Assessment of Readiness for College and Careers (PARCC) .....	36
ACT Composite Scores.....	37
2015 Advanced Placement Performance .....	37
National Assessment of Educational Progress (NAEP)"The Nation's Report Card" Average Student Scores for Illinois and U.S. Public Schools.....	38
Comparison of Illinois and U.S. Achievement Gaps .....	38
National Assessment of Educational Progress (NAEP)"The Nation's Report Card" Comparison of Illinois and U.S. Achievement Gaps .....	39
<b>Educators.....</b>	<b>40</b>
Number of Selected Full-Time Public School Personnel by Gender 2014-15 .....	40
Nonpublic School Personnel (FTE) 2014-15.....	40
Salaries for Selected Full-Time Public School Personnel 2014-15.....	41
Public School Pupil-to-Teacher Ratios .....	41
Educator Certificates Issued by Type .....	42
Educator Certificates Issued by Evaluation, Entitlement and Exchange .....	42
Educator Licenses Issued by Evaluation, Entitlement and Exchange .....	42
Educator Licenses Issued by Type.....	43
Educator Endorsements Issued by Type .....	43
Educator Certification/Licensure Tests Administered by Test Fields .....	44
National Board-Certified Teachers Certification Earned in Illinois .....	45
Expenditures to National Board-Certified Teachers.....	45
<b>Special Education Services .....</b>	<b>46</b>
Students With Disabilities Receiving Special Education Services .....	46

Students With Disabilities by Gender.....	46
Students With Disabilities by Race/Ethnic Group .....	47
Students With Disabilities by Age .....	47
Students With Disabilities Exiting School.....	48
Students With Disabilities by Primary Language.....	48
Students With Disabilities Receiving Related and Other Special Education Services .....	49
Educational Placement of Children With Disabilities (Ages 3-5) .....	50
Educational Placement of Children With Disabilities (Ages 6-21).....	51
Teachers Employed to Provide Special Education Services (FTE) .....	51
Paraprofessionals Employed to Provide Special Education Services (FTE).....	52
Special Education and Related Services Personnel (FTE).....	52
Mandated Categorical Grants Rate Analysis .....	53
Teachers' Retirement Systems .....	54
How Illinois Ranks Among the States 2013-14 .....	55

## Illinois Teacher of the Year

Steven Elza, an automotive technology teacher at William Fremd High School in Palatine, is the 2015 Illinois Teacher of the Year. One of 12 finalists, Elza was announced as this year's top educator during the 40th annual Those Who Excel/Illinois Teacher of the Year banquet in Normal on Oct. 25, 2014.



Steve competed for National Teacher of the Year and represented Illinois at a variety of events, including a trip to NASA Space Camp in Huntsville, Ala., and spoke at teaching workshops and educational conferences. This past August, Steve and 10 of his current and former students from William Fremd demonstrated their expertise and knowledge in automotive technology by participating in an engine teardown in the Governor's Tent at the Illinois State Fair.

Steve says he wasn't interested in school until the end of his sophomore year in high school when an opportunity arose that would change his life – he was offered the chance to attend the Technology Center of DuPage (TCD) to specialize in automotive technology. The program director, Jim Krudl, became his mentor and lifelong friend. He inspired, encouraged, and supported Steve as the future began to take shape. College hadn't been a part of Steve's plan until Krudl asked him to visit Southern Illinois University. Steve obliged and, in his words, "fell in love." He was the first person in his family to attend college and graduate.

The idea of teaching wasn't on Steve's radar until Krudl again intervened and told him about an opening at the Technology Center of DuPage, where Steve had studied in high school. Steve quickly discovered teaching was his dream job. He's gone on to build relationships with his students just as his mentor, Krudl, did with students at TCD. Steve is known for his extraordinary efforts to support each student in his classroom.

A graduate of Southern Illinois University with a Bachelor of Science in automotive technology, Steve also holds two Master of Education degrees from Southern and has earned numerous other certifications. Steve's automotive technology program has achieved National Automotive Technician Education Foundation certification. Township High School District 211 is the first high school district in the state to have all of its schools achieve this distinction. Only 4 percent of all high schools in the United States achieve this certification. Additionally, Steve has led students to multiple state and national competitions, where his students have earned hundreds of thousands of dollars in scholarships and materials.

On Oct. 17, 2015, Steve joined educators from across the state at the 41st Those Who Excel/Illinois Teacher of the Year banquet as Kim Thomas was named the 2016 Illinois Teacher of the Year. Kim is a math teacher at Woodruff Career and Technical Center in Peoria.

## 2015 Condition of Education

Though Illinois continues to await the approval of the complete fiscal year 2016 (July 1, 2015, to June 30, 2016) state budget, school districts have received their funding uninterrupted due to Public Act 99-005, which provides the majority of FY 2016 state fund spending authority for PreK-12 education. The bill also increased education funding by \$182.4 million over FY 2015 levels.

Illinois State Board of Education (ISBE) employees remain on the job and continue to process local district claims, licensure issues, and other services we perform on a day-to-day basis.

General State Aid payments for FY 2016 are prorated at 92 percent. This means the state is paying 92 percent of the amounts statutorily owed to school districts. Proration affects the entire GSA claim, both the equalization foundation formula and the supplemental low-income formula.

The GSA formula supports local school districts' general operations. FY 2016 is the fifth consecutive year of substantial underfunding bringing the cumulative underfunding total to \$2.36 billion for this period. The cumulative loss of state general funds appropriated for education during the period FY 2010 to FY 2016, as compared to FY 2009, amounted to approximately \$3.8 billion.

School districts that experienced the greatest loss per student due to the proration this fiscal year were eligible for a supplemental grant to offset the loss through an additional \$85 million for GSA Loss Limitation. Prior to this funding, prorated payments resulted in losses of up to \$677 per student. With the new \$85 million appropriation, losses were limited to no more than \$228.40 per student. ISBE distributed these funds beginning with the September payment.

### Student Demographics

The number of operating school districts has declined from 879 in 2005 to 859 in 2015. There are now 373 elementary districts, 99 high school districts and 387 unit districts. The number of public schools has dropped in the last decade from 3,884 in 2005 to 3,764 in 2015. The average school size has seen a slight increase to 546 students in 2015, up from 531 in 2005. Overall student enrollment in the regular Illinois public schools over the last 10 years decreased from 2,062,912 in 2005 to 2,054,556 in 2015. Student enrollment has been based on the home school since 2011.

Meanwhile, Illinois continues to experience a significant increase in low-income students. Low-income students increased from 40 percent of the enrollment in 2005 to 54.2 percent in 2015. Pupils are considered low-income if they are from families receiving public aid, are living in institutions for neglected or delinquent children, are being supported in foster homes with public funds, or are eligible for free or reduced-price lunches.

Students who are Black, Hispanic, Asian, Native Hawaiian/Pacific Islander, Native American, or Two or More Races made up 50.7 percent of the enrollment in 2015, up from 43.3 percent in 2005. The increase in minority percentage is accounted for mainly by increases among Hispanic, Asian, and Two or More Races students.

### Learning Outcomes

In September, the State Board of Education amended its strategic plan to improve student success in Illinois by refocusing on specific, high-reaching goals that are measurable. They are as follows:

- Every child in each public school system in the state of Illinois deserves to attend a system wherein...

- All kindergarteners are assessed for readiness.
- 90 percent or more third-grade students are reading at or above grade level.
- 90 percent or more fifth-grade students meet or exceed expectations in mathematics.
- 90 percent or more students are on track to graduate with their cohort at the end of ninth grade.
- 90 percent or more students graduate from high school ready for college or career.
- All students are supported by highly prepared and effective teachers and school leaders.
- Every school offers a safe and healthy learning environment for all students.

In spring, students in grades 3-8 and some high school students successfully completed the first administration of the new statewide assessment, the Partnership for Assessment of Readiness for College and Careers (PARCC) test in English language arts and math. The PARCC test replaces the Illinois Standards Achievement Test (ISAT) and the Prairie State Achievement Exam (PSAE). It aligns with the higher expectations of the Illinois Learning Standards and better reflects classroom learning and students' experiences outside of the classroom.

The PARCC test measures students' critical thinking, problem-solving abilities, and writing skills, which are all essential for success in higher education and the workplace. Now students must demonstrate and explain their knowledge and understanding as opposed to simply reciting memorized facts or filling in a bubble for a correct answer. These changes mean that we cannot compare PARCC exam results to those of the ISAT and PSAE.

Final PARCC test results were publicly released Dec. 11. The 2015 scores took additional time to produce because Illinois educators and their colleagues from other states needed to review students' work to determine the performance levels.

As anticipated, the PARCC results for schools and individual students appeared lower than what educators and families typically expect for their students. The PARCC test sets new goals for our students using higher expectations focused on college and career readiness. Therefore, lower proficiency scores do not mean that our schools are performing worse or that students are learning less or are not as capable. This change is simply a reflection of how statewide assessments have evolved.

There are no immediate consequences for schools or students tied to the 2015 administration. The first year of PARCC testing is serving as a baseline for test scores and will establish the performance targets for future years.

## **Student Performance and Achievement**

In August, ISBE announced that Illinois students tied for the highest composite ACT score among the 13 states that administer the ACT test statewide. The Class of 2015 achieved an average composite score of 20.7, tying with Colorado's graduating class and showing steady progress in meeting ACT's College Readiness Benchmarks, according to "The Condition of College & Career Readiness 2015." Illinois' graduating seniors showed continued gains in the percentage of students who meet each of the four ACT College Readiness Benchmark Scores in English, math, reading, and science. Hispanic students represented 22 percent of graduates meeting three or more College Readiness Benchmarks in 2015, compared to 18 percent in 2011. African American graduates represented 12 percent of graduates meeting three or more benchmarks in 2015, compared to 10 percent in 2011.

Illinois also maintained the same composite ACT score of 20.7 from 2014 to 2015, which falls slightly below the national average score of 21. The national average is based primarily on the scores of self-selected, college-bound students. In Illinois, every 11th-grader was required to take the ACT as part of the PSAE from 2001 to

2014. The Class of 2015 was the last graduating class to take the PSAE during its junior year. ACT research shows that testing more than a college-bound population is associated with lower overall composite scores.

In 2015, Illinois' minority and low-income student participation in Advanced Placement exams continued to exceed the national average, with students showing record gains on these rigorous, college-level tests. More than 105,200 students took at least one AP exam in 2015, compared to 99,171 in 2014 and 78,654 in 2011, according to the 2015 College Board Program Results. Twenty-five percent of Illinois AP test takers were low-income students, compared to the national low-income participation rate of 22.1 percent.

Of the state's 2015 pool of test takers, 28.2 percent were underrepresented minority students. Nationally, this student group made up 26.2 percent of AP examinees. Fourteen percent of all public school AP examinees in Illinois and 9.4 percent of national public school test takers were Mexican American students. The percentage of Illinois Black AP examinees exceeded the national percentage of 8.3 by more than a percentage point at 9.4 percent.

The 2015 Report Card also showed that more Illinois graduates are attending college, with nearly 70 percent attending college in the first year after graduation. Since 2012, the state's four-year graduation rate grew by 3 percent to 85.3 percent and the five-year rate rose by 3.6 percent to 87.6 percent.

# **Illinois State Board of Education**

## **2015 Annual Report**

### **Demographic, Financial and Statistical Data**





# STATE, LOCAL AND FEDERAL RESOURCES

## State, Local and Federal Resources For Elementary and Secondary Education (Dollars in Millions) (105 ILCS 5/2-3.11)

Year	State		Local		Federal		Total
	\$	%	\$	%	\$	%	
2014-15	\$10,337.0	34.3%	\$16,793.7	55.8%	\$2,976.5	9.9%	\$30,107.2
2013-14	10,293.4	34.5	16,560.4	55.5	3,007.4	10.1	29,861.2
2012-13	9,400.8	33.0	16,075.6	56.5	2,976.7	10.5	28,453.1
2011-12	9,305.3	32.4	15,815.4	55.1	3,580.8	12.5	28,701.5
2010-11	9,286.8	33.1	15,344.1	54.6	3,460.8	12.3	28,091.7
2009-10	9,897.3	34.6	15,037.0	52.6	3,637.4	12.7	28,571.7
2008-09	7,992.7	30.4	14,488.5	55.1	3,812.7	14.5	26,293.9
2007-08	8,519.6	34.6	13,903.7	56.5	2,165.7	8.8	24,589.0
2006-07	7,492.1	33.1	12,982.2	57.3	2,174.1	9.1	22,648.4
2005-06	6,875.5	32.3	12,226.1	57.5	2,163.1	10.2	21,264.7
2004-05	6,955.7	33.7	11,456.7	55.5	2,219.3	10.8	20,631.7
2003-04	7,206.1	35.9	10,805.3	53.8	2,073.8	10.3	20,085.2
2002-03	6,873.2	36.1	10,226.2	53.7	1,952.1	10.2	19,051.5
2001-02	7,181.1	38.8	9,724.0	52.5	1,623.0	8.8	18,528.1
2000-01	6,785.1	37.7	9,331.6	51.9	1,868.0	10.4	17,984.7
1999-00	6,354.0	37.8	8,907.0	52.9	1,565.8	9.3	16,826.8
1998-99	5,654.4	36.1	8,571.1	54.7	1,434.3	9.2	15,659.8
1997-98	4,849.3	33.9	8,052.0	56.2	1,417.9	9.9	14,319.2
1996-97	4,307.1	32.7	7,700.9	58.5	1,152.9	8.8	13,160.9
1995-96	3,994.8	32.1	7,339.8	58.9	1,123.7	9.0	12,458.3

### Notes:

- Fiscal years and school years start July 1 and end June 30. Tax years start Jan. 1 and end Dec. 31. The state and federal funds shown are based on fiscal years while local funds are based on tax (calendar) years. For example, the 2014-15 year includes actual state and federal appropriations for state fiscal year 2015 and local revenues accruing to school districts from the 2013 tax year. The 2013 property taxes are payable to the districts in calendar year 2014, usually after July 1.
- Local includes local real property tax revenues as estimated by the total property tax extension of districts and Corporate Personal Property Replacement Funds. Not included as local revenue are proceeds from investment income, income from school food services, and revenue generated through fees and assessments.
- State includes appropriated amount with original appropriations, supplementals, and teachers' retirement and pension contributions.
- Fiscal year 2009 federal sources include \$1.5 billion in federal funds received through the American Recovery and Reinvestment Act (ARRA).

**Elementary and Secondary School Income from Local Sources**  
**(Dollars in Millions)**  
**(105 ILCS 5/2-3.11)**

<b>Tax Year</b>	<b>Calendar Year Collected</b>	<b>Property Tax Revenues<sup>a</sup></b>	<b>CPP Replacement Fund</b>	<b>Total Regular Revenues<sup>b</sup></b>
2013	2014	\$16,077.0 <sup>c</sup>	\$716.7 <sup>d</sup>	\$16,793.7
2012	2013	15,864.1	696.3	16,560.4
2011	2012	15,447.6	628.0	16,075.6
2010	2011	15,188.5	626.9	15,815.4
2009	2010	14,632.6	711.4	15,344.0
2008	2009	14,377.2	659.8	15,037.0
2007	2008	13,706.4	782.1	14,488.5
2006	2007	13,109.8	793.9	13,903.7
2005	2006	12,310.9	671.3	12,982.2
2004	2005	11,600.7	625.4	12,226.1
2003	2004	11,001.7	455.0	11,456.7
2002	2003	10,398.8	406.5	10,805.3
2001	2002	9,823.8	402.4	10,226.2
2000	2001	9,220.2	503.8	9,724.0
1999	2000	8,775.2	556.4	9,331.6
1998	1999	8,405.7	501.3	8,907.0
1997	1998	8,057.6	513.5	8,571.1
1996	1997	7,583.6	468.4	8,052.0
1995	1996	7,278.1	422.8	7,700.9
1994	1995	6,914.0	425.8	7,339.8

<sup>a</sup> Revenues are derived by multiplying the total tax rate times the applicable equalized assessed value (EAV) property base for the tax year.

<sup>b</sup> "Total Regular Revenues" is the sum of "Property Tax Revenues" and "CPP Replacement Fund" revenues.

<sup>c</sup> Based on 2013 EAV amounts and 2013 total tax rates.

<sup>d</sup> Revenue represents calendar year 2013 collections, distributed by the Illinois Department of Revenue in calendar year 2014.

**Net Lottery Proceeds  
Compared to Total Appropriations to ISBE  
(Dollars in Millions)  
(105 ILCS 5/2-3.11)**

<b>Fiscal Year</b>	<b>Total Appropriations<sup>a</sup></b>	<b>Net Lottery Proceeds<sup>b</sup></b>	
		<b>Amount</b>	<b>% of Total</b>
2015	\$10,337.0	\$678.5	6.6%
2014	10,293.4	668.1	6.5
2013	9,400.8	655.6	7.0
2012	9,305.3	639.8	6.9
2011	9,286.8	631.8	6.8
2010	9,897.3	625.0	6.3
2009	7,992.7	625.0	7.8
2008	8,519.6	657.0	7.7
2007	7,492.1	622.4	8.3
2006	6,875.5	670.5	9.8
2005	6,955.7	614.0	8.8
2004	7,206.1	570.1	7.9
2003	6,873.2	540.0	7.9
2002	7,181.1	555.0	7.7
2001	6,785.1	490.0	7.2
2000	6,354.0	515.0	8.1
1999	5,654.4	540.0	9.6
1998	4,849.3	565.0	11.7
1997	4,307.1	590.2	13.7
1996	3,994.8	594.1	14.9

<sup>a</sup> General Revenue Funds include retirement contributions and supplemental appropriations.

<sup>b</sup> Net Lottery Proceeds provided by the Illinois Department of Revenue.

**Notes:**

- Since FY 1985, Net Lottery Proceeds have been deposited into the Common School Fund.
- Starting March 1, 2010, annual transfers to the Common School Fund are equal to the amount transferred in FY 2009, adjusted for inflation. Any additional net revenue is deposited in the Capital Projects Fund.

**State Revenues by Source**  
**(Dollars in Millions)**  
**(105 ILCS 5/2-3.11)**

<b>ALL FUNDS</b>	<b>FY14</b>		<b>FY15 (est.)</b>	
Income Taxes	\$19,806	32.4%	\$17,959	29.1%
Sales Taxes	8,036	13.1	8,323	13.5
Federal Aid	16,702	27.3	18,487	29.9
Road Taxes	1,294	2.1	1,313	2.1
State Lottery (gross)	1,335	2.2	1,360	2.2
All Other	13,965	22.9	14,292	23.2
Total	\$61,138	100.0%	\$61,734	100.0%

<b>GENERAL FUNDS</b>	<b>FY14</b>		<b>FY15 (est.)</b>	
Income Taxes	\$19,806	53.9%	\$17,509	51.4%
Sales Taxes	7,676	20.9	7,950	23.3
Federal Aid	3,903	10.6	3,676	10.8
Public Utility	1,013	2.8	1,015	3.0
State Lottery (net)	668	1.8	682	2.0
All Other	3,702	10.0	3,237	9.5
Total	\$36,768	100.0%	\$34,069	100.0%

Note: FY 2014 amounts are actual amounts; FY 2015 amounts are preliminary actual amounts.

Data source: FY 2016 State of Illinois Budget Book.

**Appropriations by Major Purpose**  
**(Dollars in Millions)**  
**(105 ILCS 5/2-3.11)**

<b>ALL FUNDS</b>	<b>FY14</b>		<b>FY15 (est.)</b>	
Elementary & Secondary	\$13,312	20.3%	\$13,426	20.2%
Higher Education	3,959	6.1	3,997	6.0
Transportation	2,724	4.2	2,778	4.2
Human Services	29,364	44.9	29,673	44.7
Public Safety	2,711	4.1	2,574	3.9
Environment	559	0.9	568	0.9
Gov't Services	4,488	6.9	4,907	7.4
All Other	8,310	12.6	8,410	12.7
<b>Total</b>	<b>\$65,427</b>	<b>100.0%</b>	<b>\$66,333</b>	<b>100.0%</b>

<b>GENERAL FUNDS</b>	<b>FY14</b>		<b>FY15 (est.)</b>	
Elementary & Secondary	\$10,228	31.9%	\$10,181	32.3%
Higher Education	3,307	10.3	3,343	10.6
Transportation	11	0.0	6	0.0
Human Services	12,845	40.0	12,241	38.9
Public Safety	1,750	5.4	1,623	5.2
Environment	53	0.2	54	0.2
Gov't Services	1,079	3.4	1,065	3.4
All Other	2,838	8.8	2,979	9.4
<b>Total</b>	<b>\$32,111</b>	<b>100.0%</b>	<b>\$31,492</b>	<b>100.0%</b>

Notes:

- FY 2014 amounts are actual amounts; FY 2015 amounts are preliminary actual amounts.
- Government Services include Executive, Legislative, Judicial and Attorney General.

Data source: FY 2016 State of Illinois Budget Book.

**Expenditures by Major Purpose**  
**(Dollars in Millions)**  
**(105 ILCS 5/2-3.11)**

<b>ALL FUNDS</b>	<b>FY14</b>		<b>FY15 (est.)</b>	
Elementary & Secondary	\$12,480	20.9%	\$13,424	20.6%
Higher Education	3,796	6.4	3,931	6.0
Transportation	2,306	3.9	2,306	3.5
Human Services	24,581	41.1	27,013	41.4
Public Safety	2,184	3.7	2,170	3.3
Environment	399	0.7	504	0.8
Gov't Services	4,321	7.2	4,900	7.5
All Other	9,697	16.1	10,988	16.9
<b>Total</b>	<b>\$59,764</b>	<b>100.0%</b>	<b>\$65,236</b>	<b>100.0%</b>

<b>GENERAL FUNDS</b>	<b>FY14</b>		<b>FY15 (est.)</b>	
Elementary & Secondary	\$10,222	32.4%	\$10,180	33.1%
Higher Education	3,301	10.5	3,329	10.8
Transportation	22	0.1	22	0.1
Human Services	12,334	39.1	11,570	37.6
Public Safety	1,733	5.5	1,617	5.3
Environment	45	0.1	44	0.1
Gov't Services	1,023	3.2	1,065	3.5
All Other	2,862	9.1	2,953	9.5
<b>Total</b>	<b>\$31,542</b>	<b>100.0%</b>	<b>\$30,780</b>	<b>100.0%</b>

Notes:

- FY 2014 amounts are actual amounts; FY 2015 amounts are preliminary actual amounts.
- Government Services include Executive, Legislative, Judicial and Attorney General.

Data source: FY 2016 State of Illinois Budget Book.

## State Mandated Categorical Grant Programs

(Dollars in Thousands)  
(105 ILCS 5/2-3.104)

Program Name	Appropriations					FY15
	FY08	FY09	FY10	FY11	FY12	
Sp Ed Personnel	422,463.0	426,100.0	459,600.0	457,352.0	452,257.2	439,061.8
Sp Ed Funding for Children	348,561.0	348,604.8	351,378.4	334,236.8	343,375.7	303,091.7
Sp Ed Private Tuition	139,400.0	151,600.0	181,100.0	183,223.1	177,743.7	218,947.7
Sp Ed Summer School	10,000.0	11,000.0	11,700.0	11,296.5	10,750.0	10,100.0
Sp Ed Transportation	355,718.0	383,300.0	429,700.0	422,189.0	432,525.6	440,500.0
Reg/Voc Transportation	312,819.0	339,500.0	351,100.0	213,049.1	223,976.1	206,947.1
Ill Free Lunch/Breakfast	21,000.0	26,300.0	26,300.0	26,300.0	26,300.0	14,300.0
Sp Ed Orphanage	79,400.0	101,800.0	120,200.0	120,200.0	101,700.0	105,000.0
Reg Ed Orphanage	11,500.0	11,600.0	13,000.0	13,000.0	13,000.0	12,000.0
<b>Totals</b>	<b>1,667,861.0</b>	<b>1,799,804.8</b>	<b>1,944,078.4</b>	<b>1,780,846.5</b>	<b>1,781,628.3</b>	<b>1,749,948.3</b>
<b>Prior Year % Change</b>		<b>6.63%</b>	<b>8.02%</b>	<b>-8.4%</b>	<b>0.04%</b>	<b>-0.34%</b>
					<b>1,755,948.3</b>	<b>1,716,949.4</b>
					<b>-1.44%</b>	<b>-1.89%</b>

### 100% Claims including Chicago 299 (No Audit Adjustments)

Appropriation Year	FY08	FY09	FY10	FY11	FY12	FY13	FY14	FY15
<b>Reimbursement Programs</b>	<b>06-07</b>	<b>07-08</b>	<b>08-09</b>	<b>09-10</b>	<b>10-11</b>	<b>11-12</b>	<b>12-13</b>	<b>13-14</b>
Sp Ed Personnel	424,635.4	439,072.6	454,401.2	458,457.8	452,235.8	440,282.4	441,525.2	439,932.1
Sp Ed Funding for Children	314,600.0	331,051.1	334,236.8	334,236.8	343,375.7	314,196.1	303,091.7	302,928.9
Sp Ed Private Tuition	137,526.8	154,644.8	182,134.0	183,012.2	191,096.1	216,782.0	226,181.2	231,983.4
Sp Ed Summer School	9,926.2	10,854.4	11,602.5	11,296.4	10,750.0	10,270.7	11,151.9	11,617.4
Sp Ed Transportation	357,969.9	392,374.3	416,376.4	425,813.4	433,370.0	440,149.6	449,057.4	454,826.6
Reg/Voc Transportation	310,662.8	333,561.6	340,240.5	336,893.9	332,409.7	320,773.0	329,858.8	340,649.5
<b>Appropriation Year</b>	<b>FY08</b>	<b>FY09</b>	<b>FY10</b>	<b>FY11</b>	<b>FY12</b>	<b>FY13</b>	<b>FY14</b>	<b>FY15</b>
Ill Free Lunch/Breakfast	26,564.3	27,498.4	29,013.1	29,968.5	36,136.8	38,000.9	39,432.9	42,744.4
Sp Ed Orphanage	88,467.1	98,276.3	106,373.5	109,169.8	101,591.4	103,488.0	99,706.6	96,128.6
Reg Ed Orphanage	13,065.3	11,600.6	11,557.1	11,802.8	12,087.2	11,575.3	11,166.4	14,133.5
<b>Pro-Ration Reimburse %</b>	<b>FY08</b>	<b>FY09</b>	<b>FY10</b>	<b>FY11</b>	<b>FY12</b>	<b>FY13</b>	<b>FY14</b>	<b>FY15</b>
Sp Ed Personnel	100%	97%	100%	100%	100%	100%	100%	98%
Sp Ed Funding for Children	100%	100%	100%	100%	100%	100%	100%	98%
Sp Ed Private Tuition	100%	96%	99%	100%	87%	91%	94%	94%
Sp Ed Summer School	100%	100%	100%	100%	100%	96%	81%	75%
Sp Ed Transportation	100%	97%	100%	100%	100%	99%	97%	95%
Reg/Voc Transportation	100%	100%	100%	74%	77%	76%	74%	71%
Ill Free Lunch/Breakfast	78%	91%	83%	78%	73%	38%	36%	21%
Sp Ed Orphanage	100%	100%	100%	100%	100%	100%	100%	100%
Reg Ed Orphanage	100%	100%	100%	100%	100%	100%	100%	100%

Notes:

- Current fiscal year appropriations pay previous year claims except for IL Free Lunch/ Breakfast and Orphanage programs.
- Approp & claim amounts include amounts funded through the Chicago Block Grant.

**Public Schools Finance Statistics**  
(105 ILCS 5/2-3.11)

	<b>District Type</b>	<b>Per Capita Tuition Charge</b>	<b>Operating Expense per Pupil</b>
<b>2013-14 Total</b>	Elementary	\$10,450	\$11,846
	Secondary	14,900	16,165
	Unit	10,019	12,096
	ALL DISTRICTS	10,677	12,521
	Chicago SD 299 (10 mos.)	11,707	15,120
<b>2012-13 Total</b>	Elementary	\$10,161	\$11,594
	Secondary	14,259	15,621
	Unit	9,363	11,532
	ALL DISTRICTS	10,167	12,045
	Chicago SD 299 (10 mos.)	10,412	13,791
<b>2011-12 Total</b>	Elementary	\$10,105	\$11,457
	Secondary	13,891	15,138
	Unit	9,026	11,338
	ALL DISTRICTS	9,911	11,842
	Chicago SD 299 (10 mos.)	9,462	13,433
<b>2010-11 Total</b>	Elementary	\$9,560	\$11,190
	Secondary	13,241	14,681
	Unit	8,633	11,262
	ALL DISTRICTS	9,440	11,664
	Chicago SD 299 (10 mos.)	9,127	13,616
<b>2009-10 Total</b>	Elementary	\$9,675	\$11,082
	Secondary	13,481	14,658
	Unit	8,995	11,375
	ALL DISTRICTS	9,725	11,537
	Chicago SD 299 (10 mos.)	9,765	13,077

District types:

Elementary School Districts: Pre-K-8

Secondary (High) School Districts: 9-12

Unit School Districts: Pre-K-12



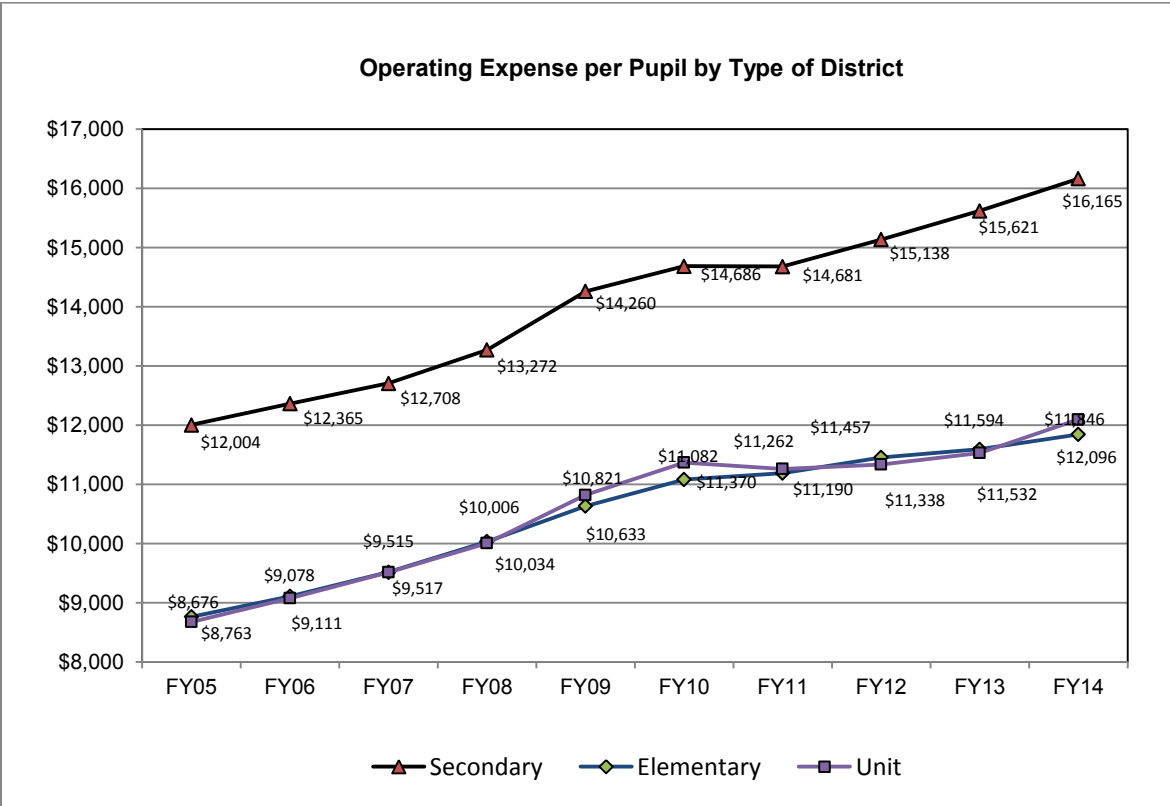
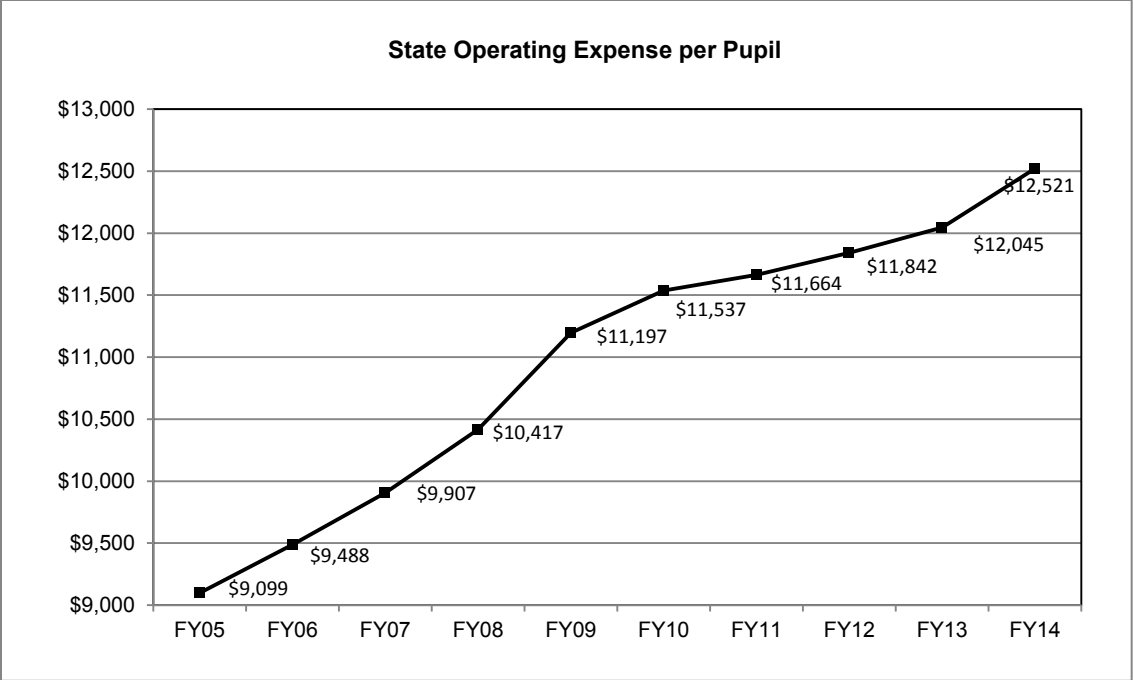
**Total Appropriations per Pupil Enrolled**  
(105 ILCS 5/2-3.11)

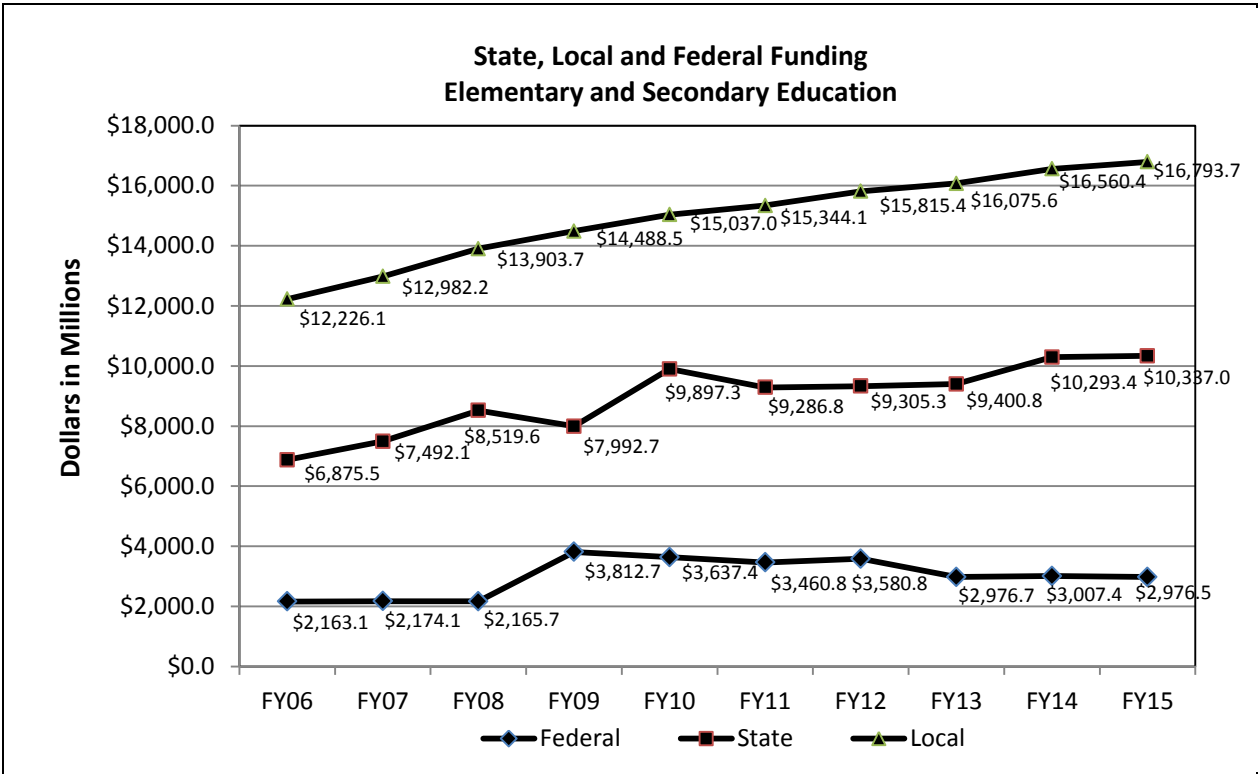
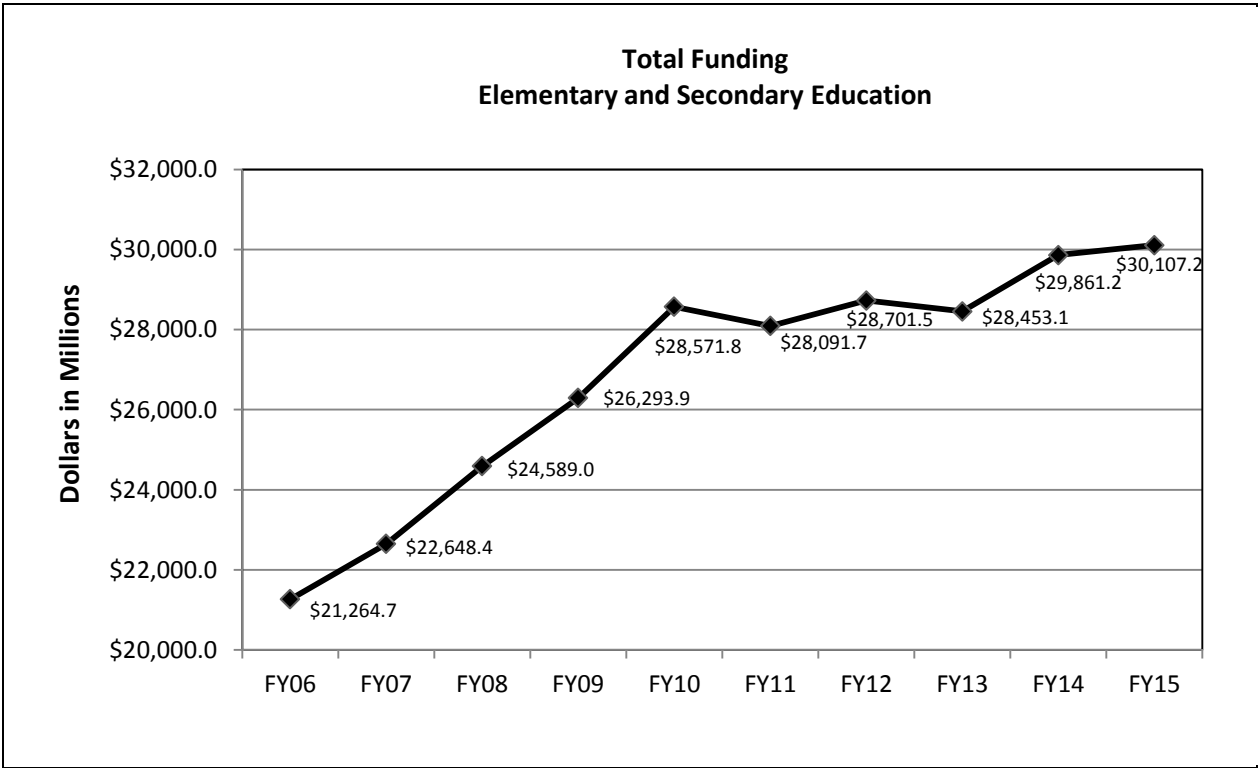
<b>Fiscal Year</b>	<b>Total Appropriations<sup>a</sup></b>	<b>Fall Enrollment<sup>b</sup></b>	<b>Total Appropriations Per Pupil Enrolled<sup>c</sup></b>	<b>% Change in Dollars Per Pupil Enrolled</b>
2015	\$30,107.2	2,057,858	\$14,630	1.8%
2014	29,797.2	2,073,480	14,370	3.7
2013	28,453.4	2,054,155	13,852	0.7
2012	28,701.5	2,087,628	13,748	1.5
2011	28,091.7	2,074,806	13,539	-0.2
2010	28,571.7	2,105,779	13,568	9.0
2009	26,293.9	2,112,132	12,449	7.0
2008	24,589.0	2,113,435	11,635	8.8
2007	22,648.4	2,118,692	10,690	6.2
2006	21,264.7	2,111,706	10,070	2.4
2005	20,631.7	2,097,503	9,836	2.9
2004	20,085.2	2,100,961	9,560	4.6
2003	19,051.5	2,084,187	9,141	2.2
2002	18,528.1	2,071,391	8,945	2.0
2001	17,984.7	2,051,021	8,769	5.2
2000	16,827.2	2,018,316	8,337	7.1
1999	15,659.8	2,011,814	7,784	8.5
1998	14,319.2	1,996,184	7,173	7.6
1997	13,160.9	1,974,824	6,664	4.2
1996	12,458.3	1,948,089	6,395	4.8

<sup>a</sup> In millions; includes state, federal and local funds.

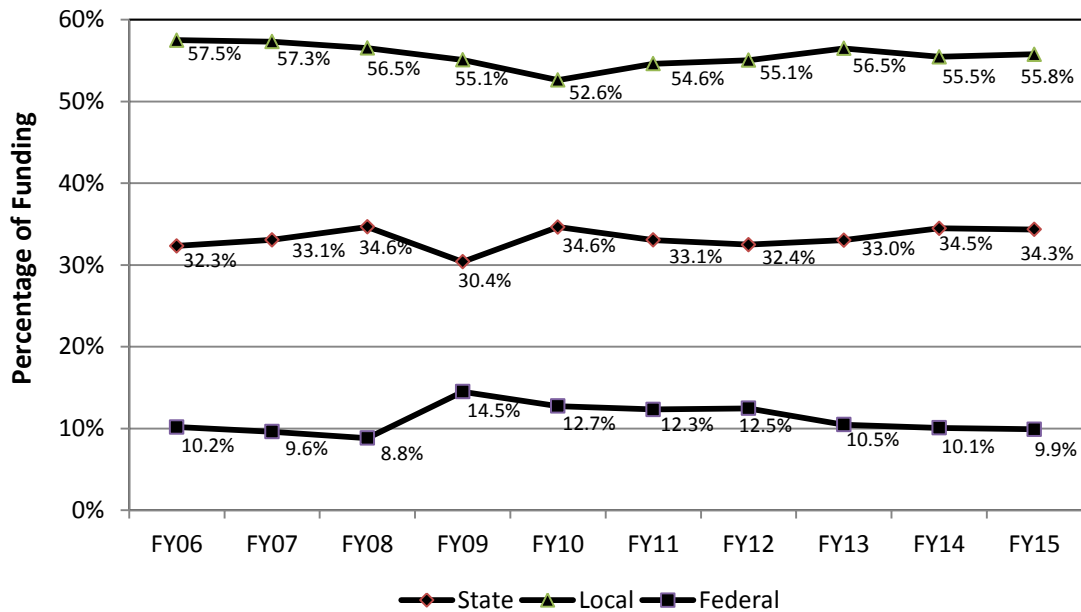
<sup>b</sup> Fall Housing Enrollment is a snapshot of student enrollment as of Oct. 15.

<sup>c</sup> In whole dollars.



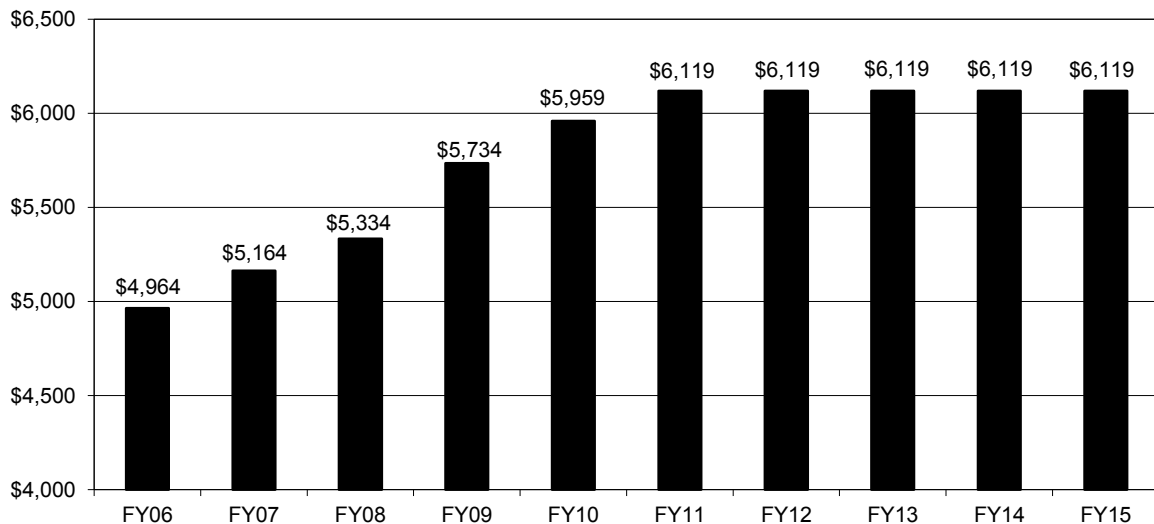


### Percentages of State, Local and Federal Funding



Note: The percentage increase in federal funds and decrease in state funds in FY 2009 is due to federal funds received through the American Recovery and Reinvestment Act (ARRA).

### Foundation Level Funding



Note: Since FY 10, the funded amount has fallen below the legislated amount per 105 ILCS 5/18-8.05

	FY 10	FY 11	FY 12	FY 13	FY 14	FY 15
Proration	98.3%	99.9%	95.0%	89.2%	88.7%	87.1%
Approp Shortfall (in Millions)	\$18.9	\$0.3	\$231.1	\$518.2	\$562.1	\$ 648.1

# SCHOOL AND DISTRICTS

## A Profile of Illinois Public Schools in 2014-15 Selections from School Report Card Files (regular public schools only)

### SUMMARY

859 districts (regular public)  
3,764 schools  
2,054,556 students  
54.2% low-income enrollment

85.3% graduation rate  
2.3% dropout rate  
12% mobility rate  
10.3% LEP enrollment

### TRENDS

**Number of school districts declined.** The number of operating school districts declined from 879 in 2005 to 859 in 2015; there were 373 elementary districts, 99 high school districts and 387 unit districts.

**Decrease in the number of public schools.** The number of public schools decreased from 3,884 in 2005 to 3,764 in 2015. These figures include charter schools and regular public schools that issue school report cards.

**Slight increase in average school size.** The average school size increased from 531 in 2005 to 546 in 2015.

**Student enrollment decreased.** Student enrollment in regular Illinois public schools decreased from 2,062,912 in 2005 to 2,054,556 in 2015, according to the Illinois Report Card enrollment figures. Report Card enrollment is taken as of Oct. 1 and must be verified by the district superintendent. Student enrollment has been based on the home school since 2011.

**Low-income enrollment exceeded 50 percent.** Low-income students increased from 40 percent of the enrollment in 2005 to 54.2 percent in 2015. Pupils are considered low-income if they are from families receiving public aid, are living in institutions for neglected or delinquent children, are being supported in foster homes with public funds, or are eligible for free or reduced-price lunches.

**Mobility rate declined.** The mobility rate declined from 16.1 percent in 2005 to 12 percent in 2015. The mobility rate is the sum of the students transferred out and students transferred in, divided by the average daily enrollment, multiplied by 100. A student may be counted more than once, depending on the number of transfers the student makes in the year.

**Percentage of minority students exceeded 50 percent.** Students who are Black, Hispanic, Asian, American Indian or Alaskan Native, Hawaiian or Other Pacific Islander, or Two or More Races made up 50.7 percent of the enrollment in 2015, up from 43.3 percent in 2005. The increase is mainly among Hispanic, Asian, and Two or More Races students.

**LEP students increased in last decade.** The percentage of Limited English Proficient (LEP) students increased from 6.6 percent in 2005 to 10.3 percent in 2015. LEP students include those who are eligible for bilingual education.

**Dropout rate declined.** The dropout rate declined from 4 percent in 2005 to 2.3 percent in 2015. Dropouts include students in grades 9-12 whose names have been removed from the district roster for any reason other than death, extended illness, graduation/completion of a program of studies, transfer to another school, or expulsion.

**Increase in chronic truancy rate.** The chronic truancy rate was 8.7 percent in 2015, compared to 2.2 percent reported for 2005. Chronic truants include students subject to compulsory attendance who have been absent without valid cause for 5 percent (nine or more) of the past 180 school days. The definition of chronic truants was changed in 2011. Prior to 2011, chronic truants were defined as missing 10 percent of the previous 180 days.

**Average class size declined at most levels.** Between 2005 and 2015, the average class sizes for:

- Kindergarten decreased from 20.9 to 20.7
- Grade 1 increased from 21.5 to 21.6
- Grade 3 increased from 22.3 to 22.4
- Grade 6 decreased from 23.4 to 22.7
- Grade 8 decreased from 22.9 to 22.2
- High School (grades 9-12) decreased from 19.7 to 19.4

**Slight change in the percentage of Non-White teachers in the last decade.** Non-White accounted for 17.5 percent of the classroom teachers in 2015 compared to 16 percent in 2005. Non-White teachers include those who are Black, Hispanic, Asian, American Indian or Alaskan Native, Hawaiian or Other Pacific Islander, Two or More Races, or unknown.

**Slight decrease in the percentage of male classroom teachers.** There is a downward trend in the percentage of male teachers, declining from 23.5 percent of the teaching force in 2005 to 23.2 percent in 2015.

**Percentage of teachers with graduate degrees increased.** In 2015, teachers who had a master's degree or higher accounted for 61.1 percent of the classroom teachers in Illinois public schools, up from 49.1 percent in 2005.

**Pupil-teacher ratio declined at the elementary level and increased at the secondary level.** Between 2005 and 2015, the elementary pupil-teacher ratio declined from 18.9:1 to 18.5:1 while the secondary pupil-teacher ratio increased from 18.1:1 to 18.4:1.

**Graduation rate decreased.** The four-year graduation rate in 2015 was 85.3 percent, down from 87.4 percent in 2005.

**Illinois Public School Districts by Type**  
(105 ILCS 5/2-3.11)

<b>School Year</b>	<b>Elementary Districts</b>	<b>Secondary Districts<sup>a</sup></b>	<b>Unit Districts</b>	<b>Total Districts<sup>b</sup></b>
2014-15	373	99	387	859
2013-14	375	100	388	863
2012-13	375	99	389	863
2011-12	377	99	390	866
2010-11	378	101	388	867
2009-10	378	100	390	868
2008-09	378	100	390	868
2007-08	378	100	390	868
2006-07	376	100	395	871
2005-06	377	100	396	873
2004-05	379	101	399	879
2003-04	381	101	405	887
2002-03	383	103	407	893
2001-02	383	103	407	893
2000-01	383	103	408	894
1999-00	384	103	409	896
1998-99	385	104	408	897
1997-98	388	106	406	900
1996-97	392	107	405	904
1995-96	392	107	408	907

<sup>a</sup> Does not include one non-operating district.

<sup>b</sup> Does not include five state-operated school systems: the Illinois Department of Corrections/ Juvenile Justice school district, two state laboratory schools, the Illinois Mathematics and Science Academy, and the Illinois Department of Rehabilitation state schools.

Data source: CDS File Record Counts.

**Comparison of Public School Districts by Type and Enrollment**  
**2004-05 and 2014-15**  
(105 ILCS 5/2-3.11)

<b>District Enrollment</b>	<b>Elementary Districts</b>		<b>Secondary Districts</b>		<b>Unit Districts</b>		<b>Total Districts*</b>	
	<b>04-05</b>	<b>14-15</b>	<b>04-05</b>	<b>14-15</b>	<b>04-05</b>	<b>14-15</b>	<b>04-05</b>	<b>14-15</b>
25,000 or more	0	0	0	0	4	5	4	5
10,000 to 24,999	4	4	2	2	14	12	20	18
5,000 to 9,999	9	10	10	11	24	25	43	46
2,500 to 4,999	53	50	22	26	32	33	107	109
1,000 to 2,499	99	100	30	22	115	111	244	233
600 to 999	56	57	17	16	92	81	165	154
300 to 599	58	55	10	15	94	92	162	162
Fewer than 300	100	97	10	7	25	28	135	132
<b>Total</b>	<b>379</b>	<b>373</b>	<b>101</b>	<b>99</b>	<b>400</b>	<b>387</b>	<b>880</b>	<b>859</b>

\* Does not include one non-operating district, Department of Corrections/Juvenile Justice school district, state-operated districts, special education districts and state charter districts.

Data sources: Fall Housing Enrollment from School Report Card; CDS File Record Counts.

**Comparison of Public and Nonpublic Attendance Centers**  
**2004-05 and 2014-15**  
(105 ILCS 5/2-3.11)

<b>Public Attendance Centers</b>			<b>Nonpublic Attendance Centers</b>		
	<b>04-05</b>	<b>14-15</b>		<b>04-05</b>	<b>14-15</b>
Elementary	2,609	2,483	Elementary*	1,033	1,039
Junior High	613	614	Secondary	171	151
Secondary	665	673	Unit	134	203
Special Education and Others	393	420	Special Education	97	69
<b>Total</b>	<b>4,280</b>	<b>4,190</b>	<b>Total</b>	<b>1,435</b>	<b>1,462</b>

\* Includes Junior High.

Data sources: Fall Housing Enrollment from School Report Card; CDS File Record Counts.



**Illinois State Board of Education  
Public School Recognition Committee  
Act or Omissions Status Report for the 2014-15 School Year  
(105 ILCS 5/1A-4)**

<b>Region</b>	<b>Facility</b>	<b>Final Assignment</b>	<b>Violation*</b>	<b>Date of District Notification</b>
Boone/Winnebago (04)	Rockford SD 205	Recognized Pending Further Review	Various	May 7, 2015, via U.S. Mail, certified, return-receipt requested
Carroll/Jo Daviess/Stephenson (08)	East Dubuque USD 119 -East Dubuque High School -East Dubuque Jr High -East Dubuque Elem School	Recognized Pending Further Review	Failure to supply information to ROE to verify compliance	May 7, 2015, via U.S. Mail, certified, return-receipt requested
Clinton/Jefferson/Marion/Washington (13)	Grand Prairie CCSD 6	Recognized Pending Further Review	Various	May 7, 2015, via U.S. Mail, certified, return-receipt requested
Clinton/Jefferson/Marion/Washington (13)	Ina CCSD 8	Recognized Pending Further Review	Personnel file omissions	May 7, 2015, via U.S. Mail, certified, return-receipt requested
DuPage (19)	CUSD 201	Recognized Pending Further Review	Various	May 7, 2015, via U.S. Mail, certified, return-receipt requested
DuPage (19)	Downers Grove GSD 58	Recognized Pending Further Review	Various	May 7, 2015, via U.S. Mail, certified, return-receipt requested
DuPage (19)	Glendbard Twp HSD 87	Recognized Pending Further Review	Various	May 7, 2015, via U.S. Mail, certified, return-receipt requested
Franklin/Johnson/Massac/Williamson (21)	Frankfort CUSD 168 -Central Jr High School -Denning Elementary School	Recognized Pending Further Review	Various	May 8, 2015, via U.S. Mail, certified, return-receipt requested
Franklin/Johnson/Massac/Williamson (21)	Zeigler-Royalton CUSD 188 -Zeigler-Royalton Elem School	Recognized Pending Further Review	Educator licensure deficiencies	May 7, 2015, via U.S. Mail, certified, return-receipt requested

\* Unless otherwise noted, final FY 2016 recognition statuses, projected to be determined/released in spring 2016, will indicate whether the cited deficiencies have been rectified, if new deficiencies have been identified, or if the district is fully recognized.

\*\* The school district rectified cited deficiencies prior to the end of FY 2015.

<b>Region</b>	<b>Facility</b>	<b>Final Assignment</b>	<b>Violation*</b>	<b>Date of District Notification</b>
Bureau/Henry/Stark (28)	Cherry SD 92	Recognized Pending Further Review	Failure to submit health/life safety amendment; failure to include growth in principal evaluation	May 7, 2015, via U.S. Mail, certified, return-receipt requested
Bureau/Henry/Stark (28)	Dalzell SD 98 -Dalzell Grade School	Recognized Pending Further Review	Failure to submit health/life safety amend	May 7, 2015, via U.S. Mail, certified, return-receipt requested
Bureau/Henry/Stark (28)	Stark County CSD 100	Recognized Pending Further Review	Educator licensure deficiencies	May 7, 2015, via U.S. Mail, certified, return-receipt requested
Kane (31)	Aurora East USD 131 -East High School -C F Simmons Middle School -K D Waldo Middle School -Henry W Cowherd Middle School -Olney C Allen Elem School -C M Bardwell Elem School -W S Beaupre Elem School -L D Brady Elem School -G N Dieterich Elem School -John Gates Elem School -Nicholas A Hermes Elem School -C I Johnson Elem School -Rose E Krug Elem School -Oak Park Elem School -Mabel O Donnell Elem School -Edna Rollins Elem School -Fred Rodgers Magnet Acad -Anne Garcia Benavides Kindergarten Center	Recognized Pending Further Review	Various	May 7, 2015, via U.S. Mail, certified, return-receipt requested
Lake (34)	North Shore SD 112**	Recognized Pending Further Review	Personnel file omissions	May 7, 2015, via U.S. Mail, certified, return-receipt requested
Lake (34)	Winthrop Harbor SD 1**	Recognized Pending Further Review	Personnel file omissions	May 7, 2015, via U.S. Mail, certified, return-receipt requested

\* Unless otherwise noted, final FY 2016 recognition statuses, projected to be determined/released in spring 2016, will indicate whether the cited deficiencies have been rectified, if new deficiencies have been identified, or if the district is fully recognized.

\*\* The school district rectified cited deficiencies prior to the end of FY 2015.

<b>Region</b>	<b>Facility</b>	<b>Final Assignment</b>	<b>Violation*</b>	<b>Date of District Notification</b>
St. Clair (50)	East St. Louis SD 189**	Recognized Pending Further Review	Educator licensure deficiencies; failure to hold all required safety drills	May 7, 2015, via U.S. Mail, certified, return-receipt requested
St. Clair (50)	Whiteside SD 115	Recognized Pending Further Review	Failure to complete audit; failure to submit AFR; failure to create RIF list	May 7, 2015, via U.S. Mail, certified, return-receipt requested
Mason/Tazewell/ Woodford (53)	Pekin Community High School District 303	Recognized Pending Further Review	Various	May 7, 2015, via U.S. Mail, certified, return-receipt requested

\* Unless otherwise noted, final FY 2016 recognition statuses, projected to be determined/released in spring 2016, will indicate whether the cited deficiencies have been rectified, if new deficiencies have been identified, or if the district is fully recognized.

\*\* The school district rectified cited deficiencies prior to the end of FY 2015.

## **Interim Superintendents for the 2014-15 School Year (105 ILCS 5/10-21.4)**

The School Code requires all school districts “to employ a superintendent who shall have charge of the administration of the schools under the direction of the board of education” (105 ILCS 5/10-21.4). The School Code does not, however, further define the ways in which school districts are permitted to employ a superintendent. For example, the School Code does not require, on its face, that a school district superintendent be hired “full-time,” nor does the School Code, on its face, prohibit a school district from retaining a retired district superintendent to work in that school district for less than 120 days in a school year.

The Illinois State Board of Education (the “Agency”) has done its best, despite the lack of clarity in the law, to determine what is and what is not an acceptable employment practice and has historically taken action pursuant to Section 1.20 of its administrative rules (23 Ill. Admin. Code 1.20) to reduce the recognition status of school districts that have not shown a commitment to employing a full-time district superintendent. Regional Superintendents have ensured compliance consistency.

In order to clarify the responsibilities of school districts for employing a full-time district superintendent, the Agency conducted a rulemaking in fall 2010 to define the circumstances under which a superintendent must be employed. The Joint Committee on Administrative Rules subsequently objected to the proposed modifications, citing the Agency’s lack of statutory authority to limit employment. The Agency subsequently agreed to withdraw the rulemaking. Therefore, until the issue is clarified in statute, the Agency will not be taking compliance action against a school district that chooses to employ either an interim superintendent or a superintendent on less than a full-time basis.

# STUDENTS

## Public and Nonpublic Pre-Kindergarten through Post-Graduate Fall Pupil Enrollment (105 ILCS 5/2-3.11)

School Year	Public	Nonpublic	Total
2014-15	2,057,858	220,144	2,278,002
2013-14	2,073,480	219,700	2,293,180
2012-13	2,054,155	222,122	2,276,277
2011-12	2,087,628	237,377	2,325,005
2010-11	2,074,806	241,323	2,316,129
2009-10	2,105,779	243,680	2,349,459
2008-09	2,112,132	249,373	2,361,505
2007-08	2,113,435	265,276	2,378,711
2006-07	2,118,692	244,188	2,362,880
2005-06	2,111,706	267,651	2,379,357
2004-05	2,097,503	225,765	2,323,268
2003-04	2,100,961	312,891	2,413,780
2002-03	2,084,187	306,047	2,390,234
2001-02	2,071,391	317,198	2,388,589
2000-01	2,051,021	323,231	2,374,252
1999-00	2,018,316	323,869	2,342,185
1998-99	2,011,814	322,664	2,334,478
1997-98	1,996,184	321,406	2,317,590
1996-97	1,974,824	320,880	2,295,704
1995-96	1,948,089	323,438	2,271,527

### Notes:

- Fall Housing Enrollment is a snapshot of student enrollment as of Oct. 15.
- Nonpublic schools report data voluntarily on an annual basis.

Data source: Fall Housing Enrollment Report.

**Comparison of Public School Enrollment**  
**2004-05 and 2014-15**  
(105 ILCS 5/2-3.11)

<b>Grade Level</b>	<b>2004-05 Enrollment</b>	<b>2014-15 Enrollment</b>	<b>Percent Change</b>
Pre-K	53,434	48,829	-8.6%
Pre-K Bilingual	1,293	15,867	1,127.1%
Pre-K Special Ed.	14,037	22,268	58.6%
Kindergarten	145,797	139,730	-4.2%
1 <sup>st</sup> Grade	154,861	149,589	-3.4%
2 <sup>nd</sup> Grade	152,864	151,852	-0.7%
3 <sup>rd</sup> Grade	156,370	151,154	-3.3%
4 <sup>th</sup> Grade	158,622	149,400	-5.8%
5 <sup>th</sup> Grade	160,365	151,941	-5.3%
6 <sup>th</sup> Grade	161,487	152,122	-5.8%
7 <sup>th</sup> Grade	162,047	150,777	-7.0%
8 <sup>th</sup> Grade	<u>162,192</u>	<u>153,054</u>	<u>-5.6%</u>
Elementary Total	1,483,369	1,436,583	-3.2%
9 <sup>th</sup> Grade	178,240	166,026	-6.9%
10 <sup>th</sup> Grade	159,950	158,965	-0.6%
11 <sup>th</sup> Grade	142,828	148,696	4.1%
12 <sup>th</sup> Grade	132,658	147,588	11.3%
Post Graduates*	<u>458</u>	<u>n/a</u>	<u>n/a</u>
Secondary Total	614,134	621,275	-1.2%
Total Elementary & Secondary	2,097,503	2,057,858	1.9%

\* Reporting of post-graduates ended in FY 2009.

Notes:

- Enrollment reflects Fall Housing Enrollment, which is a snapshot of student enrollment as of Oct. 15. Public schools include Regional Office of Education, Department of Corrections/Juvenile Justice, special education and regular education schools.
- 2015 includes students in other sites.

Data source: Student Information System.

**Comparison of Public School Enrollment  
By Racial/Ethnic Distribution  
2004-05 and 2014-15**

<b>Public School by Race</b>	<b>2004-05</b>		<b>2014-15</b>	
	<b>Enrollment</b>	<b>%</b>	<b>Enrollment</b>	<b>%</b>
White Non-Hispanic	1,186,235	56.5	1,014,424	49.3
Black Non-Hispanic	431,049	20.6	360,961	17.5
Hispanic	383,546	18.3	516,116	25.1
Asian	77,044	3.7	94,106	4.6
American Indian or Alaskan Native	3,831	0.2	6,054	0.3
Hawaiian or Other Pacific Islander	n/a	n/a	2,171	0.1
Two or More Races	15,798	0.7	64,026	3.1
Total Students	2,097,503		2,057,858	
Total Minority Students	911,268	43.4%	1,043,434	50.7%

Data source: Fall Housing Report.

**Comparison of Nonpublic School Enrollment  
2004-05 and 2014-15  
(105 ILCS 5/2-3.11)**

<b>Grade Level</b>	<b>2004-05 Enrollment</b>	<b>2014-15 Enrollment</b>	<b>Percent Change</b>
Pre-K	29,559	28,858	-2.4%
Kindergarten	20,827	17,558	-15.7%
1 <sup>st</sup> Grade	27,385	15,667	-42.8%
2 <sup>nd</sup> Grade	26,684	15,014	-43.3%
3 <sup>rd</sup> Grade	18,407	14,839	-19.4%
4 <sup>th</sup> Grade	18,419	14,599	-20.7%
5 <sup>th</sup> Grade	18,603	14,626	-21.4%
6 <sup>th</sup> Grade	17,421	14,243	-18.2%
7 <sup>th</sup> Grade	17,287	14,262	-17.5%
8 <sup>th</sup> Grade	17,332	14,296	-17.5%
Ungraded Elementary	3,686	612	-83.4%
Elementary Special Ed. (PK-8)	<u>1,897</u>	<u>2,693</u>	<u>42.0%</u>
Elementary Total	217,507	167,267	-23.1%
9 <sup>th</sup> Grade	14,268	13,150	-7.8%
10 <sup>th</sup> Grade	13,433	13,075	-2.7%
11 <sup>th</sup> Grade	13,246	12,560	-5.2%
12 <sup>th</sup> Grade	13,074	12,601	-3.6%
Ungraded Secondary	2,066	349	-83.1%
Secondary Special Ed. (9-12)	<u>132</u>	<u>1,142</u>	<u>765.2%</u>
Secondary Total	56,219	52,877	-5.9%
Total Elementary & Secondary	273,726	220,144	-19.7%

Note: Nonpublic schools report data voluntarily on an annual basis.

**Limited English Proficient Enrollments By Native Language  
2014-15**

<b>Language</b>	<b>Chicago SD 299</b>	<b>Non-Chicago</b>	<b>Statewide Total</b>	
	<b>Number</b>	<b>Number</b>	<b>Number</b>	<b>%</b>
Spanish	54,466	103,386	157,852	78%
Arabic	1,303	5,110	6,413	3%
Polish	982	5,216	6,198	3%
Urdu	753	2,086	2,839	1%
Pilipino (Tagalog)	368	1,454	1,822	1%
Gujarati	197	1,446	1,643	1%
Mandarin (Chinese)	364	1,228	1,592	1%
Russian	128	1,268	1,396	1%
Vietnamese	359	901	1,260	1%
Cantonese (Chinese)	879	366	1,245	1%
French	232	901	1,133	1%
Korean	45	1,026	1,071	1%
Telugu (Telegu)	44	848	892	0%
Hindi	79	810	889	0%
Assyrian (Syriac, Aramaic)	217	611	828	0%
Ukrainian	251	461	712	0%
Japanese	46	612	658	0%
Romanian	122	442	564	0%
Bulgarian	59	503	562	0%
Tamil	40	496	536	0%
Other	2,517	8,670	11,187	6%
<b>Total Enrollment</b>	<b>63,451</b>	<b>137,841</b>	<b>201,292</b>	<b>100%</b>

Data Source: Student Information System.



**English Learner Students by Transition Status and School Year Outcome**  
**2014-15**  
(105 ILCS 5/1A-4)

Transition Status	Chicago SD 299 Number	Non-Chicago Number	State Total	
			Number	%
Transitioned <sup>a</sup>	9,228	21,711	30,939	15.4%
Not Transitioned	54,223	116,130	170,353	84.6%
Promoted to next grade or otherwise retained	52,406	108,147	160,553	79.8%
Withdrawn from EL classes by parents	2	1,441	1,443	0.7%
Transferred <sup>b</sup>	668	4,844	5,512	2.7%
Graduated	905	1,295	2,200	1.1%
Dropped out <sup>c</sup>	237	382	619	0.3%
Other outcome <sup>d</sup>	5	21	26	0.0%
Total Students	63,451	137,841	201,292	100.0%

Notes: <sup>a</sup> English learners who attained English language proficiency as currently defined by the state (a 5.0 Overall Composite Proficiency Level, a 4.2 Reading Proficiency Level, and a 4.2 Writing Proficiency Level on the ACCESS for ELLs measure) in 2015. English learners who did not transition out of the program were promoted to the next grade, retained in the same grade, graduated, transferred, dropped out, services were interrupted by parent withdrawal, or other issues.

<sup>b</sup> Transferred includes students transferred to another district, home schooled, private schooled, or moved to unknown.

<sup>c</sup> Dropped out includes students who dropped out or transferred to a GED program.

<sup>d</sup> Other outcomes include death, age out, and the certificate of completion.

Data Source: Student Information System.

## School Districts That Served More Than 1,000 Limited English Proficient Students 2014-15

School District Name	Number	% of Statewide LEP Enrollment
City of Chicago SD 299	63,451	31.5%
SD U-46	10,158	5.0%
Cicero SD 99	6,542	3.3%
Waukegan CUSD 60	5,192	2.6%
Aurora East USD 131	4,805	2.4%
Rockford SD 205	3,424	1.7%
Palatine CCSD 15	2,874	1.4%
Schaumburg CCSD 54	2,816	1.4%
CUSD 300	2,703	1.3%
Joliet PSD 86	2,560	1.3%
Wheeling CCSD 21	2,520	1.3%
CCSD 59	2,344	1.2%
Valley View CUSD 365U	2,311	1.1%
West Chicago ESD 33	2,243	1.1%
Aurora West USD 129	2,077	1.0%
Round Lake CUSD 116	1,893	0.9%
Indian Prairie CUSD 204	1,782	0.9%
Plainfield SD 202	1,652	0.8%
CCSD 62	1,516	0.8%
Maywood-Melrose Park-Broadview 89	1,448	0.7%
Addison SD 4	1,331	0.7%
CUSD 200	1,269	0.6%
East Maine SD 63	1,201	0.6%
Burbank SD 111	1,171	0.6%
Berwyn South SD 100	1,016	0.5%

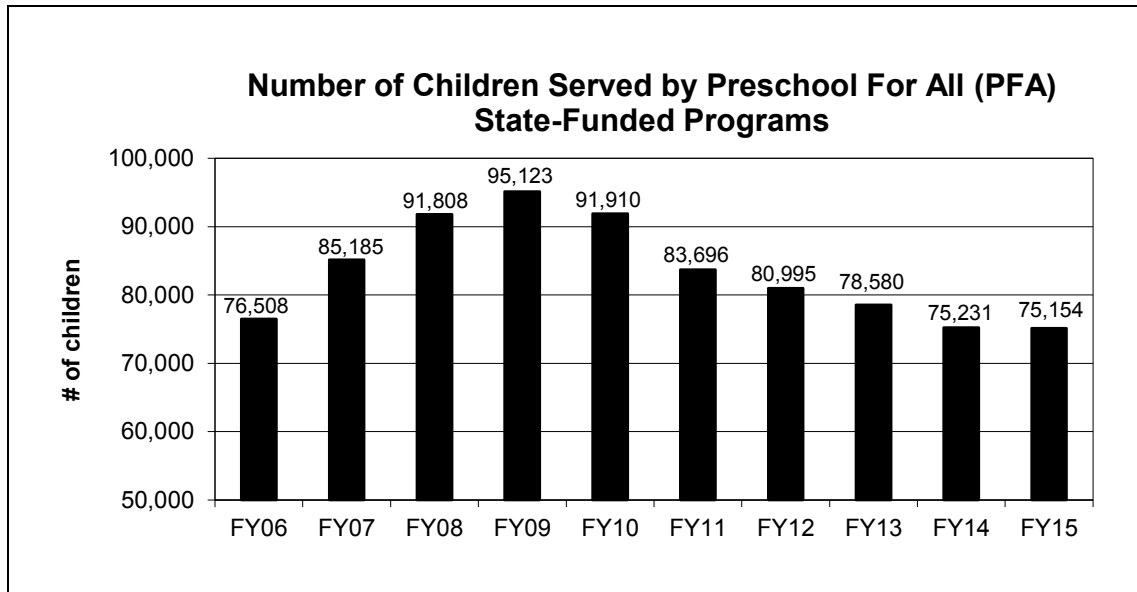
Data Source: Student Information System.

### Limited English Proficient Enrollment

	2010-11	2011-12	2012-13	2013-14	2014-15
Chicago District 299	67,354	69,689	60,818	60,154	63,451
Non-Chicago	<u>130,034</u>	<u>137,728</u>	<u>129,354</u>	<u>126,492</u>	<u>137,841</u>
Total Enrollment	197,388	207,417	190,172	186,646	201,292

Note: Enrollment counts have been revised to reflect a change in data reporting beginning in 2013-13.

Data Source: Student Information System.



Data Sources: Student Information System; Early Childhood Electronic Grant Management System.

**High School Graduates  
(105 ILCS 5/2-3.11)**

School Year	Public	Nonpublic	Total
2014-15	137,290	15,633	152,923
2013-14	139,056	15,598	154,654
2012-13	139,187	14,230	153,417
2011-12	134,260	17,514	151,774
2010-11	132,648	17,038	149,686
2009-10	139,870	17,038	156,908
2008-09	132,123	15,970	148,093
2007-08	135,143	16,271	151,414
2006-07	130,220	16,706	146,926
2005-06	127,349	13,995	141,344

Note: Nonpublic schools report data voluntarily on an annual basis.

Data sources: Student Information System; Nonpublic Registration, Enrollment and Staff Report.

## 2014-15 High School Dropout Rate by Grade Level, Gender, and Race/Ethnicity (105 ILCS 5/1A-4)

	9th Grade		10th Grade		11th Grade		12th Grade		Total	
	Male	Female	Male	Female	Male	Female	Male	Female	Male	Female
<b>White</b>										
# of Dropouts	284	207	512	341	808	552	1,084	698	2,688	1,798
Statewide Enroll	42,936	39,609	41,703	38,994	40,315	38,547	41,905	39,206	166,859	156,356
DROPOUT RATE	0.66%	0.52%	1.23%	0.87%	2.00%	1.43%	2.59%	1.78%	1.61%	1.15%
<b>Black/African Am</b>										
# of Dropouts	678	440	1,138	946	634	531	533	364	2,983	2,281
Statewide Enroll	16,082	15,248	14,991	14,437	12,458	12,894	11,957	12,454	55,488	55,033
DROPOUT RATE	4.22%	2.89%	7.59%	6.55%	5.09%	4.12%	4.46%	2.92%	5.38%	4.14%
<b>Am Indian-Alaskan</b>										
# of Dropouts	4	4	10	7	10	9	9	5	33	25
Statewide Enroll	236	257	232	204	232	205	201	219	901	885
DROPOUT RATE	1.69%	1.56%	4.31%	3.43%	4.31%	4.39%	4.48%	2.28%	3.66%	2.82%
<b>Asian</b>										
# of Dropouts	10	4	19	13	13	9	42	24	84	50
Statewide Enroll	3,612	3,587	3,451	3,303	3,420	3,371	3,533	3,490	14,016	13,751
DROPOUT RATE	0.28%	0.11%	0.55%	0.39%	0.38%	0.27%	1.19%	0.69%	0.60%	0.36%
<b>Native Hawaiian/ Pacific Islander</b>										
# of Dropouts	1	0	2	1	2	2	7	1	12	4
Statewide Enroll	91	74	69	77	69	78	75	85	304	314
DROPOUT RATE	1.10%	0.00%	2.90%	1.30%	2.90%	2.56%	9.33%	1.18%	3.95%	1.27%
<b>Hispanic</b>										
# of Dropouts	428	242	679	529	576	457	620	384	2,303	1,612
Statewide Enroll	20,615	19,007	19,042	18,263	16,857	16,446	15,569	15,332	72,083	69,048
DROPOUT RATE	2.08%	1.27%	3.57%	2.90%	3.42%	2.78%	3.98%	2.50%	3.19%	2.33%
<b>Multiracial</b>										
# of Dropouts	41	18	55	39	43	42	51	36	190	135
Statewide Enroll	2,327	2,345	2,144	2,055	1,942	1,862	1,753	1,809	8,166	8,071
DROPOUT RATE	1.76%	0.77%	2.57%	1.90%	2.21%	2.26%	2.91%	1.99%	2.33%	1.67%
<b>Totals</b>										
# of Dropouts	1,446	915	2,415	1,876	2,086	1,602	2,346	1,512	8,293	5,905
Statewide Enroll	85,899	80,127	81,632	77,333	75,293	73,403	74,993	72,595	317,817	303,458
DROPOUT RATE	1.68%	1.14%	2.96%	2.43%	2.77%	2.18%	3.13%	2.08%	2.61%	1.95%
<b>Special Populations</b>										
# of Dropouts		<b>All LEP</b>		<b>All Migrant</b>		<b>All F&amp;RL</b>		<b>All IEP</b>		
Statewide Enroll		708		2		11,167		3,397		
DROPOUT RATE		3.20%		2.08%		299,896		84,017		
						3.72%		4.04%		

Data sources:

Number of dropouts by grade level, gender, and race/ethnicity: Student Information System (SIS) Exit Codes 09, 10, 11, 14.  
Statewide fall enrollment, Special Populations (Limited English Proficiency, Migrant, Free/Reduced Lunch, Individualized Education Plan): SIS.

## Selected School Report Card Variables and Statewide Trend Data

(105 ILCS 5/1A-4 & 5/2-3.11)

Report Card Variable	2005-06	2006-07	2007-08	2008-09	2009-10	2010-11	2011-12	2012-13	2013-14	2014-15
Enrollment Percentage										
White	55.7%	54.9%	54.0%	53.3%	52.8%	51.4%	51.0%	50.6%	49.9%	49.3%
Black	19.9%	19.6%	19.2%	19.1%	18.8%	18.3%	18.0%	17.6%	17.5%	17.5%
Hispanic	18.7%	19.3%	19.9%	20.8%	21.1%	23.0%	23.6%	24.1%	24.6%	25.1%
Asian/Pacific Islander	3.8%	3.8%	3.9%	4.1%	4.2%	n/a	n/a	n/a	n/a	n/a
Asian	n/a	n/a	n/a	n/a	n/a	4.1%	4.2%	4.3%	4.5%	4.6%
Native Hawaiian/Pacific Islander	n/a	n/a	n/a	n/a	n/a	0.1%	0.1%	0.1%	0.1%	0.1%
Native American	0.2%	0.2%	0.2%	0.2%	0.2%	0.3%	0.3%	0.3%	0.3%	0.3%
Two or More Races	1.8%	2.2%	2.7%	2.5%	2.9%	2.8%	2.8%	3.0%	3.1%	3.1%
Total Enrollment <sup>a</sup>	2,075,277	2,077,856	2,074,167	2,070,125	2,064,312	2,074,806	2,066,692	2,054,155	2,046,857	2,054,556
Oper Expend Per Pupil <sup>b</sup>	\$9,099	\$9,488	\$9,907	\$10,417	\$11,197	\$11,537	\$11,664	\$11,842	\$12,045	\$12,521
Graduation Rate	87.8%	85.9%	86.5%	87.1%	87.8%	83.8%	82.3%	83.2%	86.0%	85.3%
Low-Income Enrollment	40.0%	40.9%	41.1%	42.9%	45.4%	48.1%	49.0%	49.9%	51.5%	54.2%
LEP Enrollment	6.6%	7.2%	7.5%	8.0%	7.6%	8.8%	9.4%	9.5%	9.5%	10.3%
Dropout Rate	3.5%	3.5%	4.1%	3.5%	3.8%	2.7%	2.5%	2.4%	2.2%	2.3%
Chronic Truancy Rate	2.2%	2.5%	2.5%	3.7%	3.6%	3.2%	8.6%	9.8%	8.7%	8.7%
Mobility Rate	16.0%	15.2%	14.9%	13.5%	13.0%	12.8%	13.1%	12.8%	12.3%	12.0%
Student Attendance Rate	94.0%	93.7%	93.3%	93.7%	93.9%	94.0%	94.4%	94.2%	94.5%	94.2%
Parental Contact	96.6%	96.1%	96.8%	96.7%	96.2%	96.0%	95.3%	95.5%	95.7%	95.2%
Average Class Size										
Kindergarten	20.9	20.9	20.5	20.5	20.7	20.9	20.9	21.1	21.2	20.7
Gr 1	21.5	21.0	21.0	20.9	21.2	21.6	21.2	21.5	21.6	21.6
Gr 3	22.1	21.8	21.7	21.8	22.1	22.3	22.0	21.9	22.5	22.4
Gr 6	23.4	22.6	22.2	22.0	21.5	22.0	22.4	23.1	23.1	22.7
Gr 8	22.7	21.9	21.5	21.4	21.0	21.3	21.5	22.2	22.6	22.2
High School	19.7	18.9	19.6	19.2	19.7	19.2	19.2	19.9	19.4	19.4

Note: Beginning in 2009, district statistics include charter school information.

<sup>a</sup> Enrollment figures taken from the Illinois Report Card. Report Card enrollment is taken as of Oct. 1 and must be verified by the district superintendent.

<sup>b</sup> Prior year expenditures.

# STUDENT PERFORMANCE

## Partnership for Assessment of Readiness for College and Careers (PARCC)

Students in grades 3-8 and some high school students took the Partnership for Assessment of Readiness for College and Careers (PARCC) test in March 2015. The new PARCC test replaces the Illinois Standards Achievement Test (ISAT) and the Prairie State Achievement Exam (PSAE).

Preliminary statewide results provide a new baseline for measuring student progress and therefore cannot be compared to ISAT and PSAE scores.

Final district- and school-level results indicate student performance at each of the five performance levels in English language arts and mathematics, by grade level in elementary school, and by course level in high school. The table below displays the statewide average percentage of students who meet or exceed standards.

<u>English Language Arts</u>	<u>2015</u>
Grade 3	35.3
Grade 4	39.4
Grade 5	38.3
Grade 6	35.4
Grade 7	39.9
Grade 8	40.4
High School	34.7
 <u>Mathematics</u>	 <u>2015</u>
Grade 3	34.5
Grade 4	27.9
Grade 5	26.9
Grade 6	27.2
Grade 7	27.5
Grade 8	32.1
High School	18.7

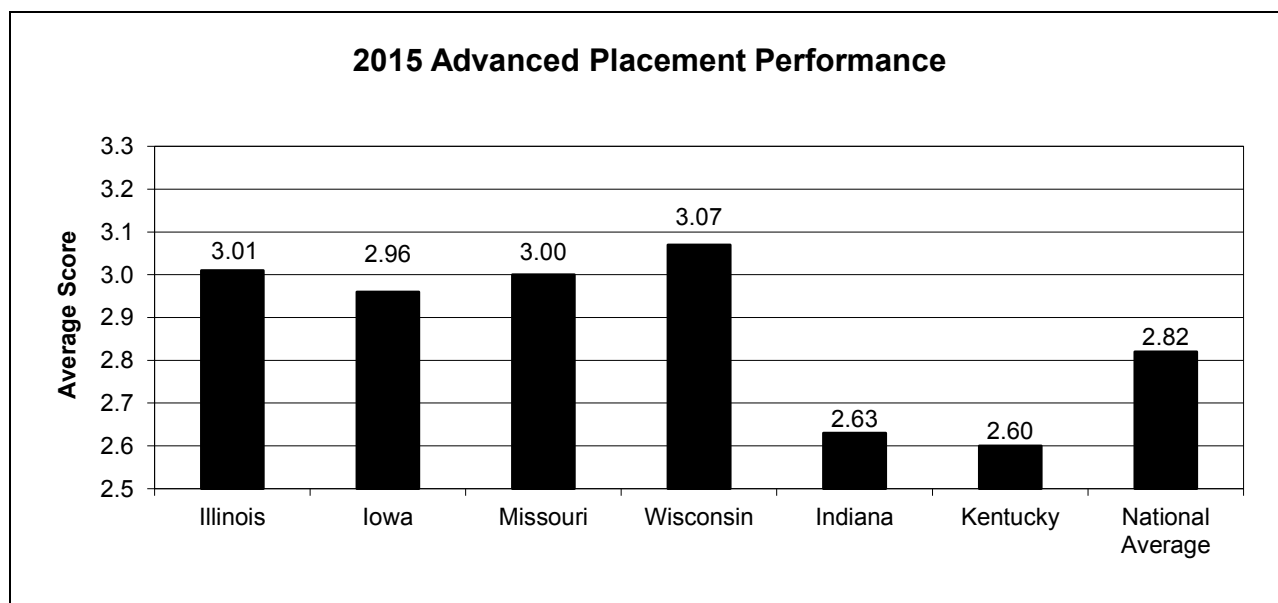
### ACT Composite Scores

<b>Illinois</b>	Composite	English	Mathematics	Reading	Science	Students Tested
2014-15	20.7	20.3	20.7	20.8	20.6	157,047
2013-14	20.7	20.3	20.7	20.8	20.5	158,037
2012-13	20.6	20.2	20.7	20.4	20.5	160,066
2011-12	20.9	20.5	21.0	20.7	20.8	146,822
2010-11	20.9	20.6	20.9	20.8	20.7	144,469

<b>National</b>	Composite	English	Mathematics	Reading	Science	Students Tested
2014-15	21.0	21.4	20.8	21.4	20.9	1,924,436
2013-14	21.0	20.3	20.9	21.3	20.8	1,845,787
2012-13	20.9	20.2	20.9	21.1	20.5	1,799,243
2011-12	21.1	20.5	21.1	21.3	20.9	1,666,017
2010-11	21.1	20.6	21.1	21.3	20.9	1,623,112

Note: Illinois and National scores include public and private schools.

Data source: ACT National and State Scores for 2015.



Data source: 2015 College Board AP Summary Reports.

**National Assessment of Educational Progress (NAEP) “The Nation’s Report Card”  
Average Student Scores for Illinois and U.S. Public Schools**

	<u>2007</u>	<u>2009</u>	<u>2011</u>	<u>2013</u>
Reading				
Illinois Grade 4	219	219	219	219
U.S. Grade 4	220	220	220	221
Illinois Grade 8	263	265	266	267
U.S. Grade 8	261	262	264	266
Math				
Illinois Grade 4	237	238	239	239
U.S. Grade 4	239	239	240	241
Illinois Grade 8	280	282	283	285
U.S. Grade 8	280	282	283	284
Science				
Illinois Grade 4	n/a	148	n/a	n/a
U.S. Grade 4	n/a	149	n/a	n/a
Illinois Grade 8	n/a	148	147	n/a
U.S. Grade 8	n/a	149	151	n/a

Data source: National Center for Education Statistics, Institute of Educational Sciences.

**Comparison of Illinois and U.S. Achievement Gaps**

	2013 Reading		2013 Math		2009 Science	
	<u>Illinois</u>	<u>U.S.</u>	<u>Illinois</u>	<u>U.S.</u>	<u>Illinois</u>	<u>U.S.</u>
Grade 4						
White	231	232	248	250	164	163
Black	199	206	220	224	120	127
Hispanic	204	207	229	231	129	131
Asian/Pacific Islander	242	235	266	258	166	160
American Indian/ Alaska Native	*	205	*	227	*	135
Two or More Races	221	227	246	245	152	154

\* Reporting standards not met. (The sample size is insufficient to permit a reliable estimate.)

Note: 2009 data are the most recent for grade 4 science.

Data source: National Center for Education Statistics, Institute of Educational Sciences.



**National Assessment of Educational Progress (NAEP) “The Nation’s Report Card”  
Comparison of Illinois and U.S. Achievement Gaps**

	2013 Reading		2013 Math		2011 Science	
Grade 8	<u>Illinois</u>	<u>U.S.</u>	<u>Illinois</u>	<u>U.S.</u>	<u>Illinois</u>	<u>U.S.</u>
White	276	276	296	294	161	163
Black	246	250	260	263	120	129
Hispanic	257	256	272	272	135	137
Asian/Pacific Islander	285	280	313	306	163	161
American Indian/ Alaska Native	*	251	*	269	*	141
Two or More Races	270	271	285	288	*	156

	2013 Reading		2013 Math	
Grade 12	<u>Illinois</u>	<u>U.S.</u>	<u>Illinois</u>	<u>U.S.</u>
White	299	297	165	162
Black	267	268	123	123
Hispanic	278	276	143	141
Asian/Pacific Islander	302	296	180	172
American Indian/ Alaska Native	*	277	*	142
Two or More Races	*	291	*	155

\* Reporting standards not met. (The sample size is insufficient to permit a reliable estimate.)

Note: 2011 data are the most recent for grade 8 science.

Data source: National Center for Education Statistics, Institute of Educational Sciences.

# EDUCATORS

## Number of Selected Full-Time Public School Personnel by Gender 2014-15 (105 ILCS 5/2-3.11)

Staff Category	Male	Female	Total
Pre-Kindergarten Teachers	23	1,448	1,471
Kindergarten Teachers	118	3,831	3,949
Elementary Teachers (1-8)	11,497	55,587	67,084
Secondary Teachers (9-12)	14,274	16,990	31,264
Special Education Teachers	3,135	17,967	21,102
District Superintendents	515	205	720
Principals	1,717	1,920	3,637
Assistant Principals	1,003	1,347	2,350
Supervisors	811	2,036	2,847
Other Administrators	920	918	1,838
School Service Personnel	<u>4,178</u>	<u>33,008</u>	<u>37,186</u>
Total Public School Personnel	38,191	135,257	173,448

## Nonpublic School Personnel (FTE) 2014-15 (105 ILCS 5/2-3.11)

Staff Category	FTE (Full-Time Equivalent)
Pre-Kindergarten Teachers	1,850.1
Kindergarten Teachers	1,249.9
Elementary Teachers (1-8)	8,659.6
Secondary Teachers (9-12)	4,142.8
Special Education Teachers	429.0
Administrative Staff (includes Principals and Assistant Principals)	2,331.0
Pupil Personnel Services Staff	837.9
Support Staff	5,012.2
Supervisory Staff	<u>773.8</u>
Total Nonpublic Personnel (FTE)	25,286.3

Data source: 2014-15 Nonpublic Registration, Enrollment and Staff Report.

**Salaries for Selected Full-Time Public School Personnel 2014-15**  
(105 ILCS 5/2-3.11)

<b>Staff Category</b>	<b>Median</b>	<b>Mean</b>
Pre-Kindergarten Teachers	\$47,165	\$50,308
Kindergarten Teachers	54,107	57,732
Elementary Teachers (1-8)	57,534	61,113
Secondary Teachers (9-12)	63,455	68,493
Special Education Teachers	57,256	61,808
District Superintendents	142,758	151,517
Principals	100,302	104,136
Assistant Principals	88,500	91,088
Supervisors	91,483	96,072
Other Administrator	90,346	97,027
School Service Personnel	26,804	40,478

Data Sources: Educator Information System, Illinois Report Card.

**Public School Pupil-to-Teacher Ratios**

<b>School Year</b>	<b>Elementary</b>	<b>Secondary</b>
2014-15	18.5	18.4
2013-14	18.6	18.1
2012-13	18.7	17.9
2011-12	18.9	18.8
2010-11	18.8	18.9
2009-10	18.2	18.2
2008-09	18.4	18.0
2007-08	18.3	18.0
2006-07	18.8	18.8
2005-06	19.1	18.9

Data Source: Illinois Report Card.

**Educator Certificates Issued By Type**  
(105 ILCS 5/2-3.11)

<b>Certificates</b>	<b>2010-11</b>	<b>2011-12</b>	<b>2012-13</b>	<b>2013-14</b>	<b>2014-15</b>
Elementary	11,318	6,367	6,416	n/a	n/a
Secondary	7,549	4,176	4,222	n/a	n/a
Early Childhood	1,538	1,116	1,132	n/a	n/a
Special	6,565	4,856	5,649	n/a	n/a
School Service	1,728	1,658	1,866	n/a	n/a
Administrative	2,980	3,006	3,560	n/a	n/a
Transitional Bilingual	683	536	529	n/a	n/a
Substitute	11,952	10,478	10,515	n/a	n/a
Other	<u>228</u>	<u>211</u>	<u>206</u>	<u>n/a</u>	<u>n/a</u>
Total	44,541	32,404	34,095	n/a	n/a

Note: Educators were issued certificates prior to FY 2014. An educator licensure system began in FY 2014 at which time all certificates were converted to licenses.

**Educator Certificates Issued By Evaluation, Entitlement & Exchange**  
(105 ILCS 5/2-3.11)

<b>Certificates</b>	<b>2010-11</b>	<b>2011-12</b>	<b>2012-13</b>	<b>2013-14</b>	<b>2014-15</b>
Evaluation	28,038	16,692	17,436	n/a	n/a
Entitlement	16,503	15,397	15,811	n/a	n/a
Exchange	<u>0</u>	<u>315</u>	<u>848</u>	<u>n/a</u>	<u>n/a</u>
Total	44,541	32,404	34,095	n/a	n/a

Note: Educators were issued certificates prior to FY 2014. An educator licensure system began in FY 2014 at which time all certificates were converted to licenses.

**Educator Licenses Issued By Evaluation, Entitlement & Exchange**  
(105 ILCS 5/2-3.11)

<b>Licenses</b>	<b>2010-11</b>	<b>2011-12</b>	<b>2012-13</b>	<b>2013-14</b>	<b>2014-15</b>
Evaluation	n/a	n/a	n/a	5,275	10,664
Entitlement	n/a	n/a	n/a	5,657	4,749
Exchange	<u>n/a</u>	<u>n/a</u>	<u>n/a</u>	<u>112,380</u>	<u>206</u>
Total	n/a	n/a	n/a	123,312	15,619

Note: Educators were issued certificates prior to FY 2014. An educator licensure system began in FY 2014 at which time all certificates were converted to licenses.

### Educator Licenses Issued by Type

<b>Licenses</b>	<b>2010-11</b>	<b>2011-12</b>	<b>2012-13</b>	<b>2013-14</b>	<b>2014-15</b>
Professional Educator	n/a	n/a	n/a	10,932	7,447
Professional Educator with Stipulations	n/a	n/a	n/a	104,525	1,167
Substitute	n/a	n/a	n/a	<u>7,855</u>	<u>10,111</u>
Total	n/a	n/a	n/a	123,312	18,725

Note: Educators were issued certificates prior to FY 2014. An educator licensure system began in FY 2014 at which time all certificates were converted to licenses.

### Educator Endorsements Issued By Type (105 ILCS 5/2-3.11)

<b>Endorsements</b>	<b>2010-11</b>	<b>2011-12</b>	<b>2012-13</b>	<b>2013-14</b>	<b>2014-15</b>
Elementary	n/a	n/a	n/a	1,392	3,283
Secondary	n/a	n/a	n/a	4,499	5,349
Early Childhood	n/a	n/a	n/a	1,208	438
Special	n/a	n/a	n/a	7,032	2,682
School Service	n/a	n/a	n/a	1,809	1,225
Administrative	n/a	n/a	n/a	3,984	1,595
Transitional Bilingual	n/a	n/a	n/a	515	444
Other	<u>n/a</u>	<u>n/a</u>	<u>n/a</u>	<u>3,029</u>	<u>6,081</u>
Total	n/a	n/a	n/a	23,468	21,097

Note: Educators were issued certificates prior to FY 2014. An educator licensure system began in FY 2014 at which time all certificates were converted to licenses.

**Educator Certification/Licensure Tests Administered by Test Fields**  
(105 ILCS 5/2-3.11d)

<b>Test Field</b>	<b>2010-11</b>	<b>2011-12</b>	<b>2012-13</b>	<b>2013-14</b>	<b>2014-15</b>
Basic Skills and TAP	15,217	13,233	13,784	11,848	22,081
Early Childhood	1,057	939	773	469	662
Elementary	5,821	5,462	4,443	2,813	3,138
Special Education - all categories	5,414	5,118	4,853	1,845	3,466
Sciences - all disciplines	1,129	915	956	583	549
Math & Computer Science	832	896	813	441	515
Foreign Languages - all languages	638	566	539	301	465
English, Speech, Media, Reading, LEP	3,067	2,594	2,685	1,379	1,565
History & Social Science	1,767	2,272	1,225	770	782
Art, Music, Theatre, Dance	748	738	708	446	569
Vocational/Technical - all fields	443	442	223	187	298
Health & Physical Education	1,238	1,166	942	569	542
School Service Personnel - all fields	1,176	1,951	2,067	810	1,265
Administrative - all types	3,217	4,625	4,305	1,253	947
Language Proficiency	932	1,051	1,005	561	949
Assessment of Professional Teaching	<u>14,068</u>	<u>13,457</u>	<u>12,094</u>	<u>7,252</u>	<u>7,220</u>
Total	56,764	55,425	51,415	31,527	45,013

Note: Educators were issued certificates prior to FY 2014. An educator licensure system began in FY 2014 at which time all certificates were converted to licenses.

**National Board-Certified Teachers  
Certification Earned in Illinois**

<b>Year</b>	<b>Newly Certified</b>	<b>% Change From Prior Year</b>	<b>Cumulative Growth</b>
2014-15	43	-79.0	6,109
2013-14	205	-21.5	6,066
2012-13	261	-40.1	5,861
2011-12	436	-5.4	5,600
2010-11	461	-40.2	5,164
2009-10	771	5.3	4,703
2008-09	732	4.1	3,932
2007-08	703	37.6	3,200
2006-07	511	18.6	2,497
2005-06	431	36.8	1,986
2004-05	315	-24.2	1,555
2003-04	413	n/a	1,240
1993-2003	827	n/a	827

**Expenditures to National Board-Certified Teachers**

<b>Year</b>	<b>Mentoring</b>	<b>Registrations</b>	<b>Annual Stipends</b>	<b>Total</b>
2014-15	\$0	\$1,000,000	\$0	\$1,000,000
2013-14	0	1,000,000	0	1,000,000
2012-13	0	1,000,000	0	1,000,000
2011-12	0	1,000,000	0	1,000,000
2010-11	0	0	2,756,400	2,756,400
2009-10	0	0	5,740,730	5,740,730
2008-09	2,616,000	667,000	8,202,000	11,485,000
2007-08	1,273,500	2,866,960	6,294,000	10,434,460
2006-07	783,000	2,183,500	5,164,109	8,130,609
2005-06	730,000	0	3,874,995	4,604,995
2004-05	530,865	834,135	3,240,000	4,605,000
2003-04	393,000	1,733,990	2,172,000	4,298,990
1993-2003	372,500	1,495,600	2,448,000	4,316,100

Note: Public Act 097-0607 eliminated the annual stipend for Illinois Master Certificate holders effective July 1, 2011.

# SPECIAL EDUCATION SERVICES

## Students with Disabilities Receiving Special Education Services Ages 3-21 Unduplicated Count (105 ILCS 5/2-3.11)

<b>Disability Category</b>	<b>2010-11</b>	<b>2011-12</b>	<b>2012-13</b>	<b>2013-14</b>	<b>2014-15</b>
Cognitive Disability (MR)	20,696	18,963	18,765	17,773	17,629
Orthopedic Impairment	1,930	1,772	1,657	1,515	1,409
Specific Learning Disability	116,966	108,386	105,338	102,737	103,710
Visual Impairment	1,189	1,176	1,175	1,125	1,123
Hearing Impairment	3,308	3,262	3,238	3,145	3,097
Deafness	667	599	621	608	606
Deaf-Blind	33	22	31	34	32
Speech/Language	64,469	61,685	59,649	56,804	54,981
Emotional Disturbance	22,152	20,747	20,205	19,602	19,668
Other Health Impairment	27,045	28,081	29,477	31,246	33,114
Multiple Disabilities	2,139	2,288	2,423	2,553	2,689
Developmental Delay	25,081	27,246	29,890	31,501	34,287
Autism	16,432	17,895	19,290	20,506	21,893
Traumatic Brain Injury	<u>723</u>	<u>722</u>	<u>733</u>	<u>738</u>	<u>715</u>
Total	302,830	292,844	292,492	289,887	294,953

## Students with Disabilities by Gender Ages 3-21 Unduplicated Count (105 ILCS 5/2-3.11)

<b>Gender</b>	<b>2010-11</b>	<b>2011-12</b>	<b>2012-13</b>	<b>2013-14</b>	<b>2014-15</b>
Male	202,460	196,275	196,044	194,020	197,366
Female	<u>100,370</u>	<u>96,569</u>	<u>96,448</u>	<u>95,867</u>	<u>97,587</u>
Total	302,830	292,844	292,492	289,887	294,953



**Students with Disabilities by Race/Ethnic Group**  
**Ages 3-21 Unduplicated Count**  
(105 ILCS 5/2-3.11)

<b>Race/Ethnicity Groups</b>	<b>2010-11</b>	<b>2011-12</b>	<b>2012-13</b>	<b>2013-14</b>	<b>2014-15</b>
Hispanic or Latino	59,864	58,913	60,939	61,292	64,128
American Indian or Alaska Native	1,238	1,204	1,227	1,461	1,628
Asian	5,929	5,986	6,180	6,470	6,621
Black or African American	63,851	60,374	60,607	59,548	61,401
Native Hawaiian or Other Pacific Islander	357	359	362	387	443
White	163,455	157,853	154,577	151,693	151,067
Two or More Races	<u>8,136</u>	<u>8,155</u>	<u>8,600</u>	<u>9,036</u>	<u>9,665</u>
Total	302,830	292,844	292,492	289,887	294,953

Note: Federal Race and Ethnicity Categories changed in the 2010-11 school year.

**Students with Disabilities by Age**  
**Unduplicated Count**  
(105 ILCS 5/2-3.11)

<b>Age</b>	<b>2010-11</b>	<b>2011-12</b>	<b>2012-13</b>	<b>2013-14</b>	<b>2014-15</b>
3	8,634	8,826	9,171	9,122	9,166
4	12,777	12,781	12,982	12,933	12,967
5	15,077	15,322	15,365	15,323	15,612
6	17,108	16,662	17,117	17,037	17,155
7	18,757	18,364	18,187	18,556	18,832
8	20,050	19,995	19,847	19,638	20,240
9	21,598	20,357	20,684	20,784	21,034
10	22,019	21,273	20,697	20,797	21,476
11	21,694	21,033	21,008	20,304	20,987
12	21,940	20,918	20,873	20,572	20,681
13	21,453	21,067	20,744	20,526	20,814
14	21,267	20,084	20,542	19,973	20,663
15	21,567	20,122	20,140	20,204	20,287
16	21,841	20,279	19,759	19,743	20,184
17	20,348	19,412	18,824	18,127	18,757
18	10,994	10,472	10,381	9,918	9,632
19	3,246	3,213	3,175	3,269	3,207
20	1,558	1,609	1,784	1,774	1,902
21	<u>902</u>	<u>1,055</u>	<u>1,212</u>	<u>1,287</u>	<u>1,357</u>
Total	302,830	292,844	292,492	289,887	294,953

**Students with Disabilities Exiting School**  
**Ages 14-21 Unduplicated Count**  
(105 ILCS 5/2-3.11)

<b>Reason for Exiting School</b>	<b>2010-11</b>	<b>2011-12</b>	<b>2012-13</b>	<b>2013-14</b>	<b>2014-15</b>
Returned to Regular Education	3,070	2,706	2,642	2,497	*
High School Diploma	15,501	14,016	13,686	14,392	*
Certificate of Completion	145	158	164	175	*
Reached Maximum Age	354	504	503	530	*
Died	70	49	74	61	*
Moved, Continuing School	8,554	7,444	6,212	6,056	*
Dropped Out of School	<u>3,603</u>	<u>2,559</u>	<u>2,773</u>	<u>2,883</u>	*
Total	31,297	27,436	26,054	26,594	*

\* 2014-15 data available 2016.

**Students with Disabilities by Primary Language**  
**Ages 3-21 Unduplicated Count**  
(105 ILCS 5/2-3.11)

<b>Primary Language</b>	<b>2010-11</b>	<b>2011-12</b>	<b>2012-13</b>	<b>2013-14</b>	<b>2014-15</b>
English	273,287	263,091	260,326	256,179	258,359
Arabic	471	481	536	578	648
Mandarin (Chinese)	62	64	63	80	100
Cantonese (Chinese)	168	162	168	171	175
French	45	52	50	68	68
German	10	12	14	21	18
Greek	42	55	60	56	72
Hindi	39	45	44	50	60
Italian	37	41	44	35	37
Japanese	27	27	34	31	35
Korean	54	61	70	77	96
Lithuanian	24	34	34	32	33
Pilipino (Tagalog)	151	176	194	195	226
Polish	667	688	768	793	846
Croatian	11	11	9	8	10
Spanish	26,205	26,216	28,258	29,479	31,959
Vietnamese	143	140	154	160	172
Others	751	790	891	1,034	1,139
Assyrian (Syriac/Aramaic)	72	80	92	93	101
Cambodian	32	28	26	26	27
Gujarati	93	108	129	139	141
Lao	10	14	15	14	13
Romanian	57	59	53	64	80
Russian	82	89	99	122	145
Urdu	247	277	316	346	355
American Sign Language	<u>43</u>	<u>43</u>	<u>45</u>	<u>36</u>	<u>38</u>
Total	302,830	292,844	292,492	289,887	294,953

**Students with Disabilities Receiving Related and Other  
Special Education Services  
Ages 3-21 Duplicated Count  
(105 ILCS 5/2-3.11)**

<b>Related and Other Services</b>	<b>2010-11</b>	<b>2011-12</b>	<b>2012-13</b>	<b>2013-14</b>	<b>2014-15</b>
Adapted Physical Education	7,284	7,108	6,871	6,690	6,628
Aide - Class	53,241	51,123	48,934	46,542	46,086
Aide - Individual Student	14,138	14,463	14,735	15,033	16,379
Art Therapy	279	261	243	256	248
Audiology	3,319	3,289	3,325	3,275	3,585
Brailist/Reader	100	98	114	93	101
Counseling Services	11,834	11,909	12,208	12,289	12,630
Consultant Services	2,486	2,471	2,402	2,178	2,004
Adapted Driver Education	13	16	9	9	5
Interpreter Services	1,095	1,092	1,066	1,001	973
Assistive Device	19,914	18,915	18,700	16,528	17,289
Music Therapy	485	553	452	368	380
Occupational Therapy	42,445	43,626	44,949	46,126	48,830
Outdoor Education	53	63	67	60	25
Orientation and Mobility	897	782	795	783	797
Other Related Services	4,219	3,906	3,873	3,755	3,631
Parent Counseling	406	347	324	310	272
Psychological Services	3,084	2,998	3,273	3,251	3,200
Physical Therapy	13,013	13,040	13,173	13,015	13,203
Psychiatric Services	504	482	536	578	524
Recreation	188	134	113	120	87
School Health Services	12,346	12,937	13,877	14,267	15,580
Speech/Language Services	74,229	76,930	79,857	83,193	87,778
Social Work Services	74,992	74,315	75,974	78,007	81,830
Transportation (Special)	62,340	61,155	61,000	61,856	63,882
Behavioral Intervention Plan	19,491	19,462	18,981	17,623	17,967
Career and Technical Education	2,339	1,853	1,546	1,385	1,268
Transition/STEP by Div of Rehab Services	22,059	20,384	21,695	21,736	23,533
Competitive Employment	289	234	190	200	132
Travel Training	174	113	121	189	159
Acquisition of Daily Living Skills	832	847	807	950	899
Supported Employment	375	334	339	366	393
Supports for Transition to Post-Sec. Ed.	2,342	2,224	2,139	2,201	2,032
Interagency Linkages	727	760	724	730	723
Students reported with no related services	116,609	110,365	106,402	105,658	105,585

Note: This chart states the number of related and other services reported for eligible students by school districts. One student could be reported as receiving up to eight services.

**Educational Placement of Children with Disabilities**  
(105 ILCS 5/2-3.11)

**Ages 3-5 Unduplicated Count**

<b>Educational Environment</b>	<b>2010-11</b>	<b>2011-12</b>	<b>2012-13</b>	<b>2013-14</b>	<b>2014-15</b>
Regular Early Childhood Program: At least 10 hours per week and receiving the majority of Spec. Ed. and related services in the regular Early Childhood Program	9,983	11,021	11,474	11,793	12,773
Regular Early Childhood Program: At least 10 hours per week and receiving the majority of hours of Spec. Ed. and related services in some other location	7,540	7,852	8,303	8,892	8,555
Regular Early Childhood Program: Less than 10 hours per week and receiving the majority of hours of Spec. Ed. and related services in the regular Early Childhood Program	1,230	884	837	820	865
Regular Early Childhood Program: Less than 10 hours per week and receiving the majority of hours of Spec. Ed. and related services in some other location	2,021	2,101	1,973	1,454	1,442
Separate Class	11,030	10,568	10,169	9,840	10,155
Separate School	947	966	1,100	1,080	692
Residential Facility	9	6	3	8	13
Home	84	91	96	92	86
Service Provider Location	<u>3,644</u>	<u>3,440</u>	<u>3,563</u>	<u>3,399</u>	<u>3,164</u>
<b>Total Ages 3-5</b>	<b>36,488</b>	<b>36,929</b>	<b>37,518</b>	<b>37,378</b>	<b>37,745</b>

Note: The Office of Special Education changed data reporting for preschool students.

**Educational Placement of Children with Disabilities**  
(105 ILCS 5/2-3.11)

**Ages 6-21 Unduplicated Count**

<b>Educational Environment</b>	<b>2010-11</b>	<b>2011-12</b>	<b>2012-13</b>	<b>2013-14</b>	<b>2014-15</b>
Inside Regular Class 80% or more of day	138,387	134,066	134,381	133,910	135,721
Inside Regular Class 40-79% of day	68,309	65,408	65,831	65,493	67,243
Inside Regular Class less than 40% of day	39,760	36,896	34,388	33,255	34,044
Separate School	14,109	13,925	14,695	14,375	14,641
Residential Facility	1,074	1,118	1,187	1,221	1,172
Homebound/Hospital	400	387	394	405	424
Correctional Facilities/ Detention Programs	384	292	238	233	218
Parentally Placed in Private Schools	<u>3,919</u>	<u>3,823</u>	<u>3,860</u>	<u>3,617</u>	<u>3,745</u>
<b>Total Ages 6-21</b>	<b>266,342</b>	<b>255,915</b>	<b>254,974</b>	<b>252,509</b>	<b>257,208</b>

**Teachers Employed to Provide Special Education Services (FTE)**  
(105 ILCS 5/2-3.11)

	<b>2010-11</b>	<b>2011-12</b>	<b>2012-13</b>	<b>2013-14</b>	<b>2014-15</b>
Teachers for Ages 3-5 (Highly Qualified)	1,535.6	1,504.0	1,555.6	1,526.4	*
Teachers for Ages 3-5 (Not Highly Qualified)	1.0	2.0	3.5	18.9	*
Teachers for Ages 6-21 (Highly Qualified)	20,766.1	20,240.2	22,223.5	20,810.0	*
Teachers for Ages 6-21 (Not Highly Qualified)	<u>6.0</u>	<u>3.8</u>	<u>31.0</u>	<u>1,233.0</u>	<u>*</u>
<b>Total Special Education Teachers</b>	<b>22,308.7</b>	<b>21,750.0</b>	<b>23,813.7</b>	<b>23,588.3</b>	<b>*</b>

\* 2014-15 data available 2016.

**Paraprofessionals Employed to Provide Special Education Services (FTE)**  
(105 ILCS 5/2-3.11)

	2010-11	2011-12	2012-13	2013-14	2014-15
Paraprofessionals for Ages 3-5 (Highly Qualified)	3,482.9	3,409.3	3,652.4	3,659.0	*
Paraprofessionals for Ages 3-5 (Not Highly Qualified)	0.0	0.0	0.0	0.0	*
Paraprofessionals for Ages 6-21 (Highly Qualified)	27,262.3	32,515.9	35,206.7	32,655.9	*
Paraprofessionals for Ages 6-21 (Not Highly Qualified)	<u>0.0</u>	<u>0.0</u>	<u>0.0</u>	<u>0.0</u>	<u>*</u>
Total Special Education Paraprofessionals	30,745.2	35,925.2	38,859.1	36,314.9	*

\* 2014-15 data available 2016.

**Special Education and Related Services Personnel (FTE)**  
(105 ILCS 5/2-3.11)

	2010-11	2011-12	2012-13	2013-14	2014-15
Audiologists	37.4	35.1	34.5	34.8	*
Speech-Language Pathologists	3,627.2	3,667.7	3,852.3	3,742.5	*
Interpreters	157.6	200.4	230.5	196.1	*
Psychologists	2,037.3	2,068.8	2,157.7	2,104.1	*
Occupational Therapists	961.0	981.9	982.2	1,007.1	*
Physical Therapists	359.0	368.2	365.5	372.1	*
Physical Education Teachers/ Therapeutic Recreation Specialists	198.9	206.6	212.2	214.1	*
Social Workers	3,383.8	3,365.7	3,394.4	3,251.1	*
Medical/Nursing Service Staff Counselors & Rehabilitation Counselors	688.0	661.5	685.9	630.6	*
	453.4	501.8	637.1	780.6	*
Orientation & Mobility Specialists	<u>27.1</u>	<u>24.8</u>	<u>29.3</u>	<u>23.4</u>	<u>*</u>
Total Related Services Personnel	11,930.7	12,082.5	12,581.7	12,356.5	*

\* 2014-15 data available 2016.

**Mandated Categorical Grants Rate Analysis**  
(105 ILCS 5/2-3.104)

<b>Program</b>	<b>Reimbursement Rate (amount)</b>	<b>School Code Reference</b>	<b>Last Rate Change to School Code</b>
Illinois Free Lunch/ Breakfast	\$0.15 per meal	105 ILCS 125	PA76-875 Effective August 1969
Regular Ed. - Orphanage	1.2 weighted per capita multiplied by reported ADA. Demonstrated actual costs above weighted formula are reimbursed to 100%. Separate summer claim reimbursed at actual cost.	105 ILCS 5/18-3	PA95-0793 Effective August 2009
Special Ed. - Funding for Children Requiring Sp. Ed.	Funds distributed at 85% based on ADA and 15% on poverty as used in the most recent GSA claim for each district.	105 ILCS 5/14-7.02(b)	PA95-0705 Effective January 2008
Special Ed. - Orphanage	Actual cost	105 ILCS 5/14-7.03	PA79-797 Effective July 1973
Special Ed. - Personnel Reimbursement	\$9,000 per certified full-time worker; \$3,500 per noncertified worker.	105 ILCS 5/14-13.01(c)	PA95-707 Effective January 2008
Special Ed. - Private Tuition	Actual tuition cost paid less 2 district per capita tuition amounts.	105 ILCS 5/14-7.02	PA80-1405 Effective August 1978
Special Ed. - Summer School	Weighted ADA multiplied by GSA amount per ADA.	105 ILCS 5/18-4.3	PA79-1350 Effective August 1976
Special Ed. - Transportation	80% of allowable cost	105 ILCS 5/14-13.01(b)	Laws of 1965 Effective July 1965
Vocational Ed. Transportation	80% of allowable cost	105 ILCS 5/29-5	Laws of 1961 Effective March 1965
Regular Ed. Transportation	Actual costs less EAV qualifying amount for eligible students (min \$16 per student).	105 ILCS 5/29-5	Laws of 1961 Effective March 1965

Notes:

- ADA: Average Daily Attendance
- GSA: General State Aid
- EAV: Equalized Assessed Valuation

## Teachers' Retirement Systems

The purpose of these funds is to pay the statutorily required state share of the actuarial liability of the Teachers' Retirement System, including the Teachers' Retirement Insurance Program, and to subsidize the Chicago Teachers' Pension Fund (Public Act 88-593).

These funds are appropriated directly to the Teachers' Retirement System and the Chicago Teachers' Pension Fund. The following represent historical appropriation amounts as shown in the Illinois State Budget Books:

<b>Fiscal Year</b>	<b>Non-Chicago System*</b>	<b>Chicago System</b>	<b>Total Appropriations</b>	<b>Pension Fund</b>
2015	\$3,514,376,700	\$50,000,000	\$3,564,376,700	\$12,145,000
2014	3,529,128,000	0	3,529,128,000	11,903,000
2013	2,790,281,000	0	2,790,281,000	10,931,000
2012	2,494,094,000	0	2,494,094,000	10,449,000
2011	2,059,013,600	32,522,400	2,091,536,000	10,449,000
2010	913,988,700	32,522,400	946,511,100	5,029,000
2009	1,527,263,000	65,044,700	1,592,307,700	9,800,000
2008	1,109,891,000	65,044,700	1,174,935,700	10,218,000
2007	813,853,500	65,044,700	878,898,200	10,242,000
2006	610,117,700	65,044,700	675,162,400	9,877,000

\*Teachers' Retirement Insurance Program (below) included in the above Non-Chicago System totals for the following fiscal years:

2015	\$100,983,000
2014	90,430,000
2013	86,683,000
2012	87,622,000
2011	85,953,000
2010	79,007,000
2009	75,474,000
2008	68,596,000
2007	75,839,000
2006	75,490,000

Note: Appropriations for FY 2005 through FY 2011 revised to reflect Illinois State Budget Books for FY 2005 through FY 2013. FY 2013 – FY 2015 updated to reflect actual appropriations.

Data source: Illinois State Budget Books FY 2006 through FY 2016.



## How Illinois Ranks Among the States\*

### 2013-2014

#### Public School Enrollment

1	California	6,236,672
5	Illinois	2,075,209
51	District of Columbia	76,744
	<i>National Total</i>	<i>49,568,215</i>

#### Number of Teachers

1	Texas	334,612
5	Illinois	129,150
51	District of Columbia	6,233
	<i>National Total</i>	<i>3,121,926</i>

#### Average Teacher Salary (2013-14)

1	New York	\$76,409
12	Illinois	\$60,124
51	South Dakota	\$40,023
	<i>National Median</i>	<i>\$50,560</i>

#### Per Pupil Expenditure

1	Vermont	\$20,212
15	Illinois	\$12,927
51	Arizona	\$6,949
	<i>National Median</i>	<i>\$9,888</i>

#### Pupils Enrolled per Teacher (2013-14)

1	Michigan	22.6
15	Illinois	16.1
51	Vermont	10.0
	<i>National Median</i>	<i>15.2</i>

\* Includes the District of Columbia.

Data source: National Education Association *Rankings and Estimates: Rankings of the States 2014 and Estimates of School Statistics 2015*.



# Illinois State Board of Education

## 2015 ANNUAL REPORT



Published by the Public Information Division, January 2016