



# Illinois State Board of Education



# 2017 ANNUAL REPORT

---

James T. Meeks,  
Chairman

Tony Smith, Ph.D.,  
State Superintendent



# STATE BOARD OF EDUCATION



**Tony Smith, Ph.D.**  
State  
Superintendent of  
Education

*The State Board of Education consists of nine members who are appointed by the Governor with the consent of the Senate.*

*Board members serve four-year terms, with membership limited to two consecutive terms.*

*The Board appoints the State Superintendent of Education, who may be recommended by the Governor.*



**James T. Meeks**  
Chairman  
Chicago



**Eligio Cerda Pimentel**  
Vice Chair  
Oak Park



**Cesilie Price**  
Secretary  
Lake Forest



**Ruth Cross**  
Naperville



**Lula Ford**  
Chicago



**Craig Lindvahl**  
Effingham



**Susie Morrison**  
Carlinville



**Kevin Settle**  
Mount Vernon





# 2017

## ANNUAL REPORT



## Illinois State Board of Education





# Illinois State Board of Education

100 North First Street • Springfield, Illinois 62777-0001  
www.isbe.net

James T. Meeks  
*Chairman*

Tony Smith, Ph.D.  
*State Superintendent of Education*

January 2018

To all residents of Illinois:

Two historic events in 2017 shifted the public education landscape statewide. First, Governor Bruce Rauner and the General Assembly comprehensively reformed the formula for distributing state funding to schools. Second, the U.S. Department of Education approved Illinois' new balanced accountability system. Both events resulted from the feedback, collaboration, and engagement of dedicated educators and advocates over months and years. Changes to these systems demonstrate renewed commitments from leadership across the state to holding high expectations for all children and to providing all children the supports they need to thrive. Transforming how we support schools with resources and connections that are more fair is a significant step towards a more prosperous Illinois.

All children deserve to both feel and be safe, connected, and have a strong sense of belonging in our schools. Decades of brain science show us positive relationships help create the conditions for learning. Children come to school each day with different individual starting points and need different supports to meet our high expectations. Each student in every Illinois school deserves caring adults, individual attention, and relevant and rigorous content.

Until 2017, Illinois had the most regressive and punitive school funding system in the country. The distribution of state resources reinforced the historical and structural inequities that place some of our children in situations of greater stress, trauma, and violence. Instead of filling in the local deficits of support caused by lack of opportunity, our state funding system made the deficits deeper.

The new evidence-based funding (EBF) formula sends more resources to Illinois' most under-resourced students. EBF takes a courageous step toward ensuring all schools have the basic resources necessary to provide a safe, rigorous, and well-rounded learning environment for all students. The Illinois State Board of Education (ISBE) is proud to have supported the work of the General Assembly and the Governor's funding reform commission in enacting fairer school funding. While we understand local property tax is still the primary source of education funding in Illinois, the EBF represents significant progress toward a system of fair education funding.

Governor Rauner signed the Evidence-Based Funding for Student Success Act into law within a day of the U.S. Department of Education approving the Illinois Every Student Succeeds Act (ESSA) Plan.

The accountability system detailed in the Illinois ESSA Plan establishes a 15-year timeline to meet four ambitious goals:

- Ninety percent or more of third-grade students are reading at or above grade level.
- Ninety percent or more of fifth-grade students meet or exceed expectations in mathematics.
- Ninety percent or more of ninth-grade students are on track to graduate with their cohort.
- Ninety percent or more of students graduate from high school ready for college and career.

The plan measures schools' performance and progress across a range of indicators, including academic achievement in English, math, and science; student growth; chronic absenteeism; climate and culture surveys; and college and career readiness. The plan introduces a new structure of support, IL-EMPOWER, for all schools and districts in Illinois. Those schools identified as Underperforming or Lowest Performing will receive additional direct support from ISBE.

IL-EMPOWER supports appreciative inquiry based in an understanding of local context, such as the school and community's change history, existing improvement plans, staffing, resources, and other data and trends. IL-EMPOWER seeks to build the capacity of educators and educational leaders to provide support for the development of the whole child – to know each student well, recognize their individual starting points, and facilitate deeper learning. IL-EMPOWER is educator-driven, state-supported school improvement and capacity building system.

To increase our statewide understanding of quality early learning opportunities, the Kindergarten Individual Development Survey (KIDS) launched statewide in the fall of 2017. Kindergarten teachers use the KIDS tool to observe and record students' levels of development across at least 14 measures. Teachers observe students as they go about their daily routines of playing, doing schoolwork, or following routine and directions, which means no interruption to class time or schedules.

KIDS empowers Illinois with comparable data on students' strengths, challenges, and dispositions when they enter kindergarten. Educators can tailor interventions right away and engage families in specific supports for students at home. Communities can better understand conditions and experiences students need before starting school in order to succeed on day one. The state can identify and work to address the significant inequities in high-quality early learning opportunities across the state.

Structuring education around knowing students well culminates in a learning experience centered on the student rather than the adult. ISBE encourages districts to take student-centered teaching

and learning even further and to explore moving away from seat time as the organizing principle of students' educational experience and focus more on demonstrated mastery of competencies.

ISBE launched the Competency-Based High School Graduation Requirements Pilot Program with 10 participating school districts in the spring of 2017. In competency-based learning, students play the active role in determining the course of their education. Students' knowledge, interests, and progressive mastery of new concepts and skills pave a personalized pathway with no ceiling. Each student can pursue deeper understanding while strengthening connections with peers and teachers. The 10 districts convened in September to build relationships, find points of connection, and begin moving their pilots from vision to action. ISBE released the request for applications for the second cohort of the pilot in November.

At the center of all of our efforts to educate students are Illinois' dedicated and talented teachers. In too many classrooms across the state, especially in rural areas and hard-to-staff subjects, our students do not have access to adequately prepared teachers. The State Board announced at its annual retreat a focused year of study on the teacher shortage to build upon the work already done and in progress to recruit and retain highly prepared and effective educators in all Illinois classrooms. The year of action research will engage educators and educational leaders on strategies to increase teacher diversity, encourage young people to enter the profession, retain both new and experienced educators, and elevate the narrative of the invaluable work teachers do.

Prepared, effective, and supported educators helped students across the state achieve significant gains in 2017. The 2017 Illinois Report Card showed higher graduation and college attendance rates, more elementary school students reading at grade level, and more eighth-grade students passing Algebra I.

ISBE remains committed to the mission and vision adopted in 2015:

- **Vision:** Illinois is a state of whole, healthy children nested in whole, healthy systems supporting communities wherein all people are socially and economically secure.
- **Mission:** Provide leadership and resources to achieve excellence across all Illinois districts by engaging legislators, school administrators, teachers, students, parents, families, and other stakeholders in formulating and advocating for policies that enhance education, empower districts, and ensure equitable outcomes for all students.

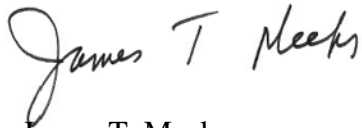
We choose to champion progress while naming the deep gaps in opportunity and security that persist in our state. We believe in the capacity of our schools and educational leaders to accelerate the growth we see today and achieve a truly transformed future for Illinois. We



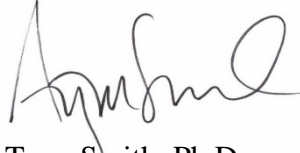
believe our potential in Illinois is increased when we collaborate with and support students, families, schools, and districts.

Thank you for all you do to support Illinois students to thrive!

Sincerely,

Handwritten signature of James T. Meeks in black ink.

James T. Meeks  
Chairman

Handwritten signature of Tony Smith, Ph.D. in black ink.

Tony Smith, Ph.D.  
State Superintendent

# Table of Contents

Illinois Teacher of the Year.....	1
2017 Condition of Education.....	2
State, Local and Federal Resources .....	9
State, Local and Federal Resources for Elementary and Secondary Education.....	9
Elementary and Secondary School Income From Local Sources .....	10
Net Lottery Proceeds Compared to Total Appropriations to ISBE.....	11
State Revenues by Source .....	12
Appropriations by Major Purpose .....	13
Expenditures by Major Purpose .....	14
State Mandated Categorical Grant Programs .....	15
Receipts and Expenditures for Illinois Public School Districts .....	16
Public Schools Finance Statistics .....	17
Total Appropriations Per Pupil Enrolled.....	18
State Average Operating Expense Per Pupil .....	19
Average Operating Expense Per Pupil by Type of District.....	19
Total Funding .....	20
State Funding .....	20
Local Funding .....	20
Federal Funding .....	20
Percentages of State, Local and Federal Funding .....	21
Schools and Districts.....	22
A Profile of Illinois Public Schools in 2016-17.....	22
Illinois Public School Districts by Type .....	24
Comparison of Public School Districts by Type and Enrollment 2006-07 and 2016-17 .....	25
Comparison of Public and Nonpublic Attendance Centers 2006-07 and 2016-17 .....	25
Public School Recognition Committee Act or Omissions Status Report for the 2016-17 School Year .....	26
Interim Superintendents for the 2016-17 School Year .....	29
Students .....	30
Public and Nonpublic Prekindergarten Through Postgraduate Fall Pupil Enrollment .....	30
Comparison of Public Enrollment 2006-07 and 2016-17.....	31
Comparison of Public School Enrollment by Racial/Ethnic Distribution 2006-07 and 2016-17.....	32
Comparison of Nonpublic School Enrollment 2006-07 and 2016-17 .....	32

English Learner Enrollment by Native Language 2016-17 .....	33
English Learners by Reclassification Status and School Year Outcome 2016-17 .....	34
School Districts That Served More Than 1,000 English Learners 2016-17.....	35
English Learner Enrollment.....	35
Number of Children Served by Preschool for All (PFA) State-Funded Programs.....	36
High School Graduates .....	36
2016-17 High School Dropout Rate by Grade Level, Gender, and Race/Ethnicity.....	37
Selected School Report Card Variables Statewide Trend Data .....	38
<b>Student Performance.....</b>	<b>39</b>
Partnership for Assessment of Readiness for College and Careers (PARCC) .....	39
Dynamic Learning Maps (DLM) .....	40
SAT .....	41
2017 Advanced Placement Performance .....	42
National Assessment of Educational Progress (NAEP) Average Student Scores for Illinois and U.S. Public Schools.....	42
National Assessment of Educational Progress (NAEP) Comparison of Illinois and U.S. Achievement Gaps .....	43
<b>Educators.....</b>	<b>44</b>
Number of Selected Full-Time Public School Personnel by Gender 2016-17 .....	44
Nonpublic School Personnel (FTE) 2016-17.....	44
Salaries for Selected Full-Time Public School Personnel 2016-17.....	45
Public School Pupil-to-Teacher Ratios .....	45
Educator Certificates Issued by Type .....	46
Educator Certificates Issued by Evaluation, Entitlement and Exchange .....	46
Educator Licenses Issued by Evaluation, Entitlement and Exchange .....	46
Educator Licenses Issued by Type.....	47
Educator Endorsements Issued by Type .....	47
Educator Certification/Licensure Tests Administered by Test Fields .....	48
National Board-Certified Teachers Certification Earned in Illinois .....	49
Expenditures to National Board-Certified Teachers.....	50
<b>Special Education Services .....</b>	<b>51</b>
Students With Disabilities Receiving Special Education Services .....	51
Students With Disabilities by Gender.....	51
Students With Disabilities by Race/Ethnic Group .....	52
Students With Disabilities by Age .....	52
Students With Disabilities Exiting School.....	53
Students With Disabilities by Primary Language.....	53

Students With Disabilities Receiving Related and Other Special Education Services .....	54
Educational Placement of Children With Disabilities.....	55
Teachers Employed to Provide Special Education Services (FTE) .....	56
Paraprofessionals Employed to Provide Special Education Services (FTE).....	57
Special Education and Related Services Personnel (FTE).....	57
Mandated Categorical Grants Rate Analysis .....	58
Teachers' Retirement Systems .....	59





## Illinois Teacher of the Year



Ricardo "Ricky" Castro, an English as a Second Language, English Arts, and Spanish teacher at Elk Grove High School in Elk Grove Village, is the 2017 Illinois Teacher of the Year. State Superintendent of Education Tony Smith, Ph.D., announced Castro, one of 10 finalists, as this year's top educator during the 42<sup>nd</sup> annual Those Who Excel/Illinois Teacher of the Year banquet in Normal on Oct. 22, 2016.

Castro represented Illinois in the National Teacher of the Year competition and represented Illinois teachers at a variety of events throughout 2017, including a trip to the White House. Castro is committed to transforming students' lives through academic readiness that opens doors to college and career. Under Castro's guidance and his collaboration with peers, 80 percent of Elk Grove High School's ninth-grade Latino English Learners were able to achieve English Language Proficiency and move into courses taught primarily in English in just one year. He helps students develop leadership skills and the empathetic mindset needed to affect change in society, embedding leadership and service in every course he teaches.

Castro's students regularly engage in service projects. His Heritage Spanish students serve as formal mentors to their middle school peers. Castro's students also established and staffed a free week-long summer camp for kindergarten through fifth-grade students who live outside a park district boundary. He is a dedicated advocate for students regardless of their ethnic or economic background. Castro is committed to helping his students succeed.

Castro's own experiences help fuel his passion for teaching. Castro says he did not always make wise decisions in his youth. He credits several excellent teachers as his inspiration to become a teacher. Castro says they took the time to care about him and help him when he struggled. He realized that he had the passion and desire to become the same kind of a teacher and to make a real difference in students' lives.

Castro earned his Bachelor of Arts in English from DePaul University and a Master of Education from the University of Illinois at Chicago.

On Oct. 28, 2017, Castro joined nearly 1,000 educators from across the state at the 43<sup>rd</sup> annual Those Who Excel/Illinois Teacher of the Year banquet. He urged the audience to "fight for democracy by preserving it from the inside out" in his speech prior to presenting the 2018 Teacher of the Year award. Castro implored educators to work alongside families and communities in order "to nurture students that have the critical thinking skills and the social character to sustain our democracy."

The state superintendent named Lindsey Jensen the 2018 Illinois Teacher of the Year. Lindsey is an English teacher at Dwight Township High School in Dwight.

# 2017 Condition of Education

## **Budget**

The fiscal year 2018 budget appropriates more than \$700 million in additional funding for public education over FY 2017 State General Revenue Funds. The FY 2018 budget appropriates \$6.676 billion in state funds for evidence-based funding (EBF) and \$5.255 billion in additional federal and state funds for other grant programs.

Governor Bruce Rauner signed into law Public Act 100-0465 or the Evidence-Based Funding for Student Success Act on August 31, 2017. This law enacts EBF and comprehensively changes the way that school districts receive the bulk of state funds. EBF sends more resources to Illinois' most under-resourced students. EBF takes the necessary first steps toward ensuring all schools have the resources they need to provide a safe, rigorous, and well-rounded learning environment for all students. EBF demonstrates new mindsets for understanding the relationship between equity, adequacy, and student outcomes.

The EBF formula consolidates and replaces five previously separate grants (General State Aid, English Learner Education, Special Education Personnel, Funding for Children Requiring Special Education Services, and Special Education Summer School). The formula holds all districts harmless at FY 2017 funding levels for those five grants, with Special Education Summer School funded at 100 percent of the claim. This hold harmless amount is each district's FY 2018 Base Funding Minimum (BFM).

The formula assigns each district an individual Adequacy Target based on the calculated cost of educating its unique student population according to best practices for staffing and other resources. The formula takes students' grade level, English Learner status, and low-income status into account. The formula sorts each district into one of four tiers based on a comparison of its adequacy target to its combined existing state and local resources. The state distributes increases in funding primarily to the school districts whose existing resources put them furthest from their adequacy targets, ensuring the students who need the most receive the most. This additional amount is each district's Tier Funding.

The EBF formula builds upon itself year-over-year, with each district's total EBF funding level for the previous year (BFM plus Tier Funding) serving as the BFM for the following year. While the FY 2018 budget does not fully fund all school districts, each year of distributing increases in funding through the EBF formula will bring the state's historically under-resourced districts closer to adequacy.

The Illinois State Board of Education (ISBE) is proud to have supported the historic work of the General Assembly and the Governor's funding reform commission in enacting a fairer school funding system. ISBE's Board Chairman, James Meeks, deserves special recognition for his years of relentless leadership and advocacy that set the foundation for this new agreement. In addition, ISBE's staff worked through more than 60 proposed models to produce the numbers that made approving a more equitable funding formula possible.

Illinois' educators and educational leaders demonstrated remarkable resourcefulness and dedication to their students and communities during the more than two years that Illinois did not have a state budget. At times during 2017, the state owed school districts more than \$1 billion in Mandated Categorical Reimbursements and grant distributions, which provided funding to school districts for services such as the free and reduced-price meal program, transportation, early childhood, bilingual education, career and technical education, and special education.

## **Student Demographics**

Overall student enrollment in Illinois public schools has decreased by nearly 50,000 students over the past 10 years, from 2,077,856 in the 2006-07 school year to 2,028,162 in the 2016-17 school year. Total enrollment in Illinois public schools decreased by 13,617 students over the past school year.

Statewide student enrollment continued the long-term trend over the past school year toward even greater diversity as students identifying as Hispanic, Asian, Native American, and Multi-Racial increased their share of enrollment. Hispanic student enrollment as a percentage of total statewide enrollment grew from 25.5 percent in 2015-16 to 25.7 in 2016-17; Asian student enrollment grew from 4.7 percent to 4.9 percent; Native American student enrollment grew from 0.3 percent to 0.4 percent; and multi-racial student enrollment grew from 3.2 percent to 3.4 percent.

Educator diversity lags behind student diversity. In the 2016-17 school year, 83.3 percent of Illinois teachers identified as White, compared to 48.5 percent of Illinois students.

Low-income students now compose the majority of the student population in Illinois public schools. Low-income students composed 37.9 percent of the enrollment 15 years ago and now compose 50.2 percent of enrollment. Students qualify as low-income if they are in families receiving public aid, live in substitute care, or are eligible for free or reduced-price lunches.

The average class size in 2016-17 decreased to 20.2 students per class from 21.1 students per class in 2015-16.

## Learning Outcomes

The State Board of Education stands committed to its strategic plan to improve student outcomes and strengthen communities by working toward common, measurable, and high-reaching goals for all students. ISBE focuses its efforts in five key areas:

Money: Establish an adequate and equitable education finance system.

Quality: Common definition of, and fair access to, quality education.

Autonomy: Maximize district autonomy to provide quality education to all families.

Competency: Encourage competency-based learning.

Community: Districts and schools as centers of healthy communities.

The State Board of Education's long-term goals establish a common definition of quality education, stating that every child in each public school system in the State of Illinois deserves to attend a system wherein...

- All kindergartners are assessed for readiness.
- Ninety percent or more of third-grade students are reading at or above grade level.
- Ninety percent or more of fifth-grade students meet or exceed expectations in mathematics.
- Ninety percent or more of ninth-grade students are on track to graduate with their cohort.
- Ninety percent or more of students graduate from high school ready for college and career.
- All students are supported by highly prepared and effective teachers and school leaders.
- Every school offers a safe and healthy learning environment for all students.

The U.S. Department of Education approved Illinois' Every Student Succeeds Act (ESSA) Plan on Aug. 30, 2017. The plan establishes a 15-year timeline for the Board's academic goals (the second through fifth bullets above). The plan describes how the Board's goals ladder up to a cross-agency goal of at least 60 percent of all Illinoisans having a high-quality degree or credential by 2025.

The Illinois ESSA Plan transitions Illinois to a system of balanced accountability. The plan assesses school performance across a range of academic, growth, and student success indicators. The plan introduces a new statewide system of support, IL-EMPOWER, which drives appreciative inquiry based in an understanding of local context. IL-EMPOWER seeks to build the capacity of educators and educational leaders through partnerships, peer-to-peer learning, and meaningful professional development.

The state's competency-based learning pilot, fairer funding system, and statewide launch of the Kindergarten Individual Development Survey to assess kindergarten readiness mark important strides toward ensuring Illinois' educators have the support, information, and opportunities they need to improve learning outcomes for all students.

## **Student Performance and Achievement**

State-level data on the 2017 Illinois Report Card show students achieved gains in a number of indicators from the 2015-16 school year to the 2016-17 school year. Student outcomes improved in English language arts achievement on the Partnership for Assessment of Readiness for College and Careers (PARCC) assessment, high school graduation rates, college enrollment rates, Advanced Placement participation and success, the community college remediation rate, ninth-grade students on track to graduate, and eighth-grade students passing Algebra I.

The 2017 Illinois Report Card included data for the first statewide administration of the SAT. All 11th-grade students took the SAT in the spring of 2017 as both a free college entrance exam and Illinois' high school accountability assessment for math and English language arts.

Some notable statewide data points are listed below. All comparisons, unless otherwise noted, show changes from the 2015-16 school year to the 2016-17 school year.

- The spring 2017 statewide administration of the SAT established Illinois' new baseline for high school student achievement: 39.8 percent of 11th-grade students achieved proficiency in English language arts and 36.4 percent achieved proficiency in math. Students will continue to have access to free, supplemental, online resources from Kahn Academy to improve their mastery of Illinois Learning Standards assessed by the SAT.
- The percentage of third- through eighth-grade students meeting or exceeding standards in English language arts on the PARCC assessment increased from 36.5 percent to 37 percent.
- The percentage of third- through eighth-grade students meeting or exceeding standards in math on the PARCC assessment decreased from 31.6 percent to 31.2 percent.
- The four-year high school graduation rate increased from 85.5 percent to 87 percent.
- The five-year high school graduation rate increased from 87.7 percent to 88.4 percent.
- The six-year high school graduation rate increased from 88.2 percent to 88.6 percent.
- The percentage of students enrolled in college 12 months after graduating increased from 67.8 percent to 69.5 percent.
- The percentage of students enrolled in college 16 months after graduating increased from 71.4 percent to 73.2 percent.



- The percentage of Illinois public high school graduates enrolled in Illinois community colleges taking remedial courses improved from 49.4 percent for the class of 2015 graduates to 46.8 percent for the class of 2016 graduates.
- The number of students in the 10th, 11th, and 12th grades taking advanced course work (Advanced Placement, International Baccalaureate, and dual credit courses) increased from 154,290 to 160,657.
  - The number of students in the 10th, 11th, and 12th grades taking Advanced Placement courses increased from 112,156 to 116,505.
  - The number of Advanced Placement exams taken by the 12th-grade class at any point during high school increased from 155,180 to 167,009.
  - The percent of Advanced Placement exams passed remained stable, increasing slightly from 65.9 percent to 66.4 percent of all exams taken by the 12th-grade class.
  - The number of students in the 10th, 11th, and 12th grades taking International Baccalaureate courses increased from 4,466 to 9,988.
- The percentage of ninth-grade students on track to graduate increased from 82.4 percent to 87.1 percent.
- The number of eighth-grade students passing Algebra I increased from 28.4 percent to 29.5 percent.
- The rate of chronic truancy increased from 9.8 percent to 10.8 percent. Chronic truancy measures the percentage of students who miss 5 percent or more of school days per year without a valid excuse.
- The dropout rate increased slightly from 2 percent to 2.1 percent.

# **Illinois State Board of Education**

## **2017 Annual Report**

### **Demographic, Financial and Statistical Data**



# STATE, LOCAL AND FEDERAL RESOURCES

## State, Local and Federal Resources For Elementary and Secondary Education (Dollars in Millions) (105 ILCS 5/2-3.11)

Year	State		Local		Federal		Total
	\$	%	\$	%	\$	%	
2016-17	11,670.4	35.6	17,552.8	53.5	3,602.6	11.0	32,825.8
2015-16	10,881.5	34.8	17,271.2	55.2	3,149.1	10.1	31,301.8
2014-15	10,439.0	34.6	16,793.7	55.6	2,976.5	9.9	30,209.2
2013-14	10,305.2	34.5	16,560.4	55.4	3,007.4	10.1	29,873.0
2012-13	9,411.6	33.1	16,075.6	56.5	2,976.7	10.5	28,463.9
2011-12	9,315.8	32.4	15,815.4	55.1	3,580.8	12.5	28,712.0
2010-11	7,568.2	28.0	15,344.1	56.7	4,127.2	15.3	27,039.5
2009-10	8,613.0	31.6	15,037.0	55.1	3,637.4	13.3	27,287.5
2008-09	9,105.7	34.5	14,488.5	54.9	2,773.7	10.5	26,367.9
2007-08	8,519.6	34.6	13,903.7	56.5	2,165.7	8.8	24,589.0
2006-07	7,492.1	33.1	12,982.2	57.3	2,174.1	9.6	22,648.4
2005-06	6,903.1	32.4	12,226.1	57.4	2,163.1	10.2	21,292.4
2004-05	6,922.0	33.6	11,456.7	55.6	2,219.3	10.8	20,598.0
2003-04	7,223.2	35.9	10,805.3	53.8	2,073.8	10.3	20,102.3
2002-03	6,812.8	35.9	10,226.2	53.8	1,952.1	10.3	18,991.1
2001-02	6,296.1	35.7	9,724.0	55.1	1,623.0	9.2	17,643.1
2000-01	6,441.0	37.3	9,331.6	54.1	1,482.0	8.6	17,254.6
1999-00	5,932.0	36.7	8,907.0	55.1	1,328.1	8.2	16,167.0
1998-99	5,420.9	35.7	8,571.1	56.5	1,177.6	7.8	15,169.6
1997-98	4,836.1	34.5	8,052.0	57.4	1,134.2	8.1	14,022.3

**Notes:**

- Fiscal years and school years start July 1 and end June 30. Tax years start Jan. 1 and end Dec. 31. The state and federal funds shown are based on fiscal years while local funds are based on tax (calendar) years. For example, the 2016-17 year includes actual state and federal appropriations for state fiscal year 2017 and local revenues accruing to school districts from the 2015 tax year. The 2015 property taxes are payable to the districts in calendar year 2016, usually after July 1.
- Local includes local original property tax revenues as estimated by the total property tax extension of districts and Corporate Personal Property Replacement Funds. Not included as local revenue are proceeds from investment income, income from school food services, and revenue generated through fees and assessments.
- State includes appropriated amount, including original appropriations, supplementals, and teachers' retirement contributions.
- Fiscal year 2009 federal sources include \$1.5 billion in federal funds received through the American Recovery and Reinvestment Act (ARRA).
- Restated fiscal year 1998 through fiscal year 2016 to reflect data from the Illinois Office of the Comptroller
- Amounts and percentages may not sum to totals based on rounding

**Elementary and Secondary School Income from Local Sources**  
**(Dollars in Millions)**  
**(105 ILCS 5/2-3.11)**

Tax Year	Calendar Year Collected	Property Tax Revenues <sup>a</sup>	CPP Replacement Fund	Total Regular Revenues <sup>b</sup>
2015	2016	\$16,875.7 <sup>c</sup>	\$677.1 <sup>d</sup>	\$17,552.8
2014	2015	16,507.0	764.2	17,271.2
2013	2014	16,077.0	716.7	16,793.7
2012	2013	15,864.1	696.3	16,560.4
2011	2012	15,447.6	628.0	16,075.6
2010	2011	15,188.5	626.9	15,815.4
2009	2010	14,632.6	711.4	15,344.0
2008	2009	14,377.2	659.8	15,037.0
2007	2008	13,706.4	782.1	14,488.5
2006	2007	13,109.8	793.9	13,903.7
2005	2006	12,310.9	671.3	12,982.2
2004	2005	11,600.7	625.4	12,226.1
2003	2004	11,001.7	455.0	11,456.7
2002	2003	10,398.8	406.5	10,805.3
2001	2002	9,823.8	402.4	10,226.2
2000	2001	9,220.2	503.8	9,724.0
1999	2000	8,775.2	556.4	9,331.6
1998	1999	8,405.7	501.3	8,907.0
1997	1998	8,057.6	513.5	8,571.1
1996	1997	7,583.6	468.4	8,052.0

<sup>a</sup> Revenues are derived by multiplying the total tax rate times the applicable equalized assessed value (EAV) property base for the tax year.

<sup>b</sup> "Total Regular Revenues" is the sum of "Property Tax Revenues" and "CPP Replacement Fund" revenues.

<sup>c</sup> Based on 2015 EAV amounts and 2015 total tax rates.

<sup>d</sup> Revenue represents calendar year 2016 collections and distributions to districts.

**Net Lottery Proceeds  
Compared to Total Appropriations to ISBE  
(Dollars in Millions)  
(105 ILCS 5/2-3.11)**

Fiscal Year	Total Appropriations <sup>a</sup>	Net Lottery Proceeds <sup>b</sup>	
		Amount	% of Total
2017	\$11,658.6	\$705.6	6.1%
2016	10,869.5	681.9	6.3
2015	10,337.0	678.6	6.6
2014	10,293.4	668.1	6.5
2013	9,400.8	655.6	7.0
2012	9,305.3	639.9	6.9
2011	9,286.8	631.8	6.8
2010	9,897.3	625.0	6.3
2009	7,992.7	625.0	7.8
2008	8,519.6	657.0	7.7
2007	7,492.1	622.4	8.3
2006	6,875.5	670.5	9.8
2005	6,955.7	614.0	8.8
2004	7,206.1	570.1	7.9
2003	6,873.2	540.0	7.9
2002	7,181.1	555.0	7.7
2001	6,785.1	490.0	7.2
2000	6,354.0	515.0	8.1
1999	5,654.4	540.0	9.6
1998	4,849.3	565.0	11.7

<sup>a</sup> General Revenue Funds include retirement contributions and supplemental appropriations.

<sup>b</sup> Net Lottery Proceeds provided by the Illinois Department of Revenue.

Notes:

- Since FY 1985, Net Lottery Proceeds have been deposited into the Common School Fund.
- Starting March 1, 2010, annual transfers to the Common School Fund are equal to the amount transferred in FY 2009, adjusted for inflation. Any additional net revenue is deposited in the Capital Projects Fund.

**State Revenues by Source**  
**(Dollars in Millions)**  
**(105 ILCS 5/2-3.11)**

<b>ALL FUNDS</b>	<b>FY 2017</b>		<b>FY 2018 (est.)</b>	
Income Taxes	\$15,779	27.8%	\$15,412	24.3%
Sales Taxes	8,541	15.0	8,638	13.6
Federal Aid	18,533	32.6	19,933	31.4
Road Taxes	1,354	2.4	1,363	2.1
State Lottery (gross)	1,303	2.3	1,303	2.1
All Other	11,341	19.9	16,868	26.6
Total	\$56,851	100.0%	\$63,517	100.0%

<b>GENERAL FUNDS</b>	<b>FY 2017</b>		<b>FY 2018 (est.)</b>	
Income Taxes	\$16,995	52.6%	\$23,181	57.2%
Sales Taxes	8,043	24.9	8,470	20.9
Federal Aid	2,483	7.7	3,556	8.8
Public Utility	884	2.7	917	2.3
State Lottery (net)	720	2.2	719	1.8
All Other	3,210	9.9	3,667	9.1
Total	\$32,335	100.0%	\$40,510	100.0%

Source: Commission on Government Forecasting and Accountability FY18 Budget Summary

Amounts and percentages may not sum to totals based on rounding

**Appropriations by Major Purpose**  
**(Dollars in Millions)**  
**(105 ILCS 5/2-3.11)**

<b>ALL FUNDS</b>	<b>FY 2017</b>		<b>FY 2018 (est.)</b>	
Elementary & Secondary	\$22,042	12.0%	\$22,510	12.2%
Higher Education	4,611	2.5	4,122	2.2
Human Services	33,885	18.5	33,046	17.9
Public Safety	2,801	1.5	3,057	1.7
Environmental & Business Regulation	3,777	2.1	3,125	1.7
Economic Development & Infrastructure	19,376	10.6	18,837	10.2
Government Services & Elected Officials	96,739	52.8	99,755	54.1
<b>Total</b>	<b>\$183,231</b>	<b>100.0%</b>	<b>\$184,452</b>	<b>100.0%</b>

<b>GENERAL FUNDS</b>	<b>FY 2017</b>		<b>FY 2018 (est.)</b>	
Elementary & Secondary Education	\$11,345	35.7%	\$12,066	34.9%
Higher Education	3,411	10.7	3,110	9.0
Human Services	12,765	40.2	13,050	37.8
Public Safety	1,502	4.7	1,869	5.4
Environmental & Business Regulation	48	0.2	51	0.1
Economic Development & Infrastructure	51	0.2	116	0.3
Governmental Services & Elected Officials	2,660	8.4	4,229	12.4
<b>Total</b>	<b>\$31,783</b>	<b>100.0%</b>	<b>\$34,560</b>	<b>100.0%</b>

Source: Illinois Office of the Comptroller

Amounts and percentages may not sum to totals based on rounding



**Expenditures by Major Purpose**  
**(Dollars in Millions)**  
**(105 ILCS 5/2-3.11)**

<b>ALL FUNDS</b>	<b>FY 2017</b>		<b>FY 2018 (est.)</b>	
Elementary & Secondary	\$20,340	14.5%	\$20,340	14.5%
Higher Education	4,224	3.0	4,224	3.0
Human Services	27,157	19.3	27,157	19.3
Public Safety	2,102	1.5	2,102	1.5
Environmental & Business Regulation	1,532	1.1	1,532	1.1
Economic Development & Infrastructure	7,754	5.5	7,754	5.5
Governmental Services & Elected Officials	77,389	55.1	77,389	55.1
<b>Total</b>	<b>\$140,498</b>	<b>100.0%</b>	<b>\$140,498</b>	<b>100.0%</b>

<b>GENERAL FUNDS</b>	<b>FY 2017</b>		<b>FY 2018 (est.)</b>	
Elementary & Secondary	\$11,319	38.5%	\$11,319	38.5%
Higher Education	3,359	11.4	3,359	11.4
Human Services	10,675	36.3	10,675	36.3
Public Safety	1,419	4.8	1,419	4.8
Environmental & Business Regulation	47	0.2	47	0.2
Economic Development & Infrastructure	43	0.1	43	0.1
Governmental Services & Elected Officials	2,560	8.7	2,560	8.7
<b>Total</b>	<b>\$29,424</b>	<b>100.0%</b>	<b>\$29,424</b>	<b>100.0%</b>

Source: Illinois Office of the Comptroller

Amounts and percentages may not sum to totals based on rounding

**State Mandated Categorical Grant Programs**  
(Dollars in Thousands)  
(105 ILCS 5/2-3.104)

Program Name	Appropriations									
	FY 2010	FY 2011	FY 2012	FY 2013	FY 2014	FY 2015	FY 2016	FY 2017	FY 2018	
Sp Ed Personnel	459,600.0	457,352.0	452,257.2	440,200.0	439,061.8	430,588.8	440,114.6	442,400.0	0.0	
Sp Ed Funding for Children	351,378.4	334,236.8	343,375.7	314,196.1	303,091.7	296,113.0	303,829.7	303,829.7	0.0	
Sp Ed Private Tuition	181,100.0	183,223.1	177,743.7	206,843.3	218,947.7	225,013.1	233,000.0	233,000.0	135,265.5	
Sp Ed Summer School	11,700.0	11,296.5	10,750.0	10,100.0	10,100.0	10,100.0	11,700.0	11,700.0	0.0	
Sp Ed Transportation	429,700.0	422,189.0	432,525.6	440,500.0	440,500.0	440,363.8	452,785.4	450,500.0	387,682.6	
Reg/Voc Transportation	351,100.0	213,049.1	223,976.1	205,808.9	206,947.1	201,178.2	205,808.9	205,808.9	262,909.8	
Ill Free Lunch/Breakfast	26,300.0	26,300.0	26,300.0	14,300.0	14,300.0	9,000.0	9,000.0	9,000.0	9,000.0	
Sp Ed Orphanage (14-7.03)	120,200.0	120,200.0	101,700.0	111,000.0	105,000.0	92,862.5	95,000.0	103,472.5	68,177.6	
Reg Ed Orphanage (18-3)	13,000.0	13,000.0	13,000.0	13,000.0	12,000.0	11,730.0	11,500.0	21,500.0	17,000.0	
<b>Totals</b>	1,944,078.4	1,780,846.5	1,781,628.3	1,755,948.3	1,749,948.3	1,716,949.4	1,762,738.6	1,781,211.1	880,035.5	
<b>Percentage Growth</b>		-8.40%	0.04%	-1.44%	-0.34%	-1.89%	2.67%	1.05%	-50.59%	

Appropriation Year School Year	100% Claims including Chicago 299 (No Audit Adjustments): Reimbursement Programs									
	FY 2010	FY 2011	FY 2012	FY 2013	FY 2014	FY 2015	FY 2016	FY 2017	FY 2018	
Sp Ed Personnel	454,401.2	458,457.8	452,235.8	440,282.4	441,525.2	439,932.1	442,512.2	443,361.7	0.0	
Sp Ed Funding for Children	351,378.4	334,236.8	343,375.7	314,196.1	303,091.7	302,928.9	303,829.7	303,829.7	0.0	
Sp Ed Private Tuition	182,134.0	183,012.2	191,096.1	216,782.0	226,181.2	231,983.4	240,693.8	238,404.1	149,525.5	
Sp Ed Summer School	11,602.5	11,296.4	10,750.0	10,270.7	11,151.9	11,617.4	12,756.2	12,348.2	0.0	
Sp Ed Transportation	416,376.4	425,813.4	433,370.0	440,149.6	449,057.4	454,828.6	464,444.6	480,608.3	427,161.0	
Reg/Voc Transportation	340,240.5	336,893.9	332,409.7	320,773.0	329,858.8	340,649.5	351,110.9	341,958.1	342,183.1	

**Current Year Programs**

Appropriation Year School Year	FY 2013				FY 2014				FY 2015			
	FY 2010	FY 2011	FY 2012	FY 2013	FY 2010	FY 2011	FY 2012	FY 2013	FY 2010	FY 2011	FY 2012	FY 2013
Ill Free Lunch/Breakfast	31,803.3	33,659.8	36,136.8	38,000.9	39,432.9	42,744.4	41,734.8	41,396.5				
Sp Ed Orphanage (14-7.03)	106,373.5	109,169.8	101,591.4	103,488.0	99,706.6	96,128.6	96,075.6	93,163.1				
Reg Ed Orphanage (18-3)	11,557.1	11,802.8	12,087.2	11,575.3	11,166.4	14,133.5	14,551.9	12,401.8				

**Pro-Ration Reimbursement Percentages**

Program Name	FY 2013				FY 2014				FY 2015			
	FY 2010	FY 2011	FY 2012	FY 2013	FY 2010	FY 2011	FY 2012	FY 2013	FY 2010	FY 2011	FY 2012	FY 2013
Sp Ed Personnel	100%	100%	100%	100%	100%	100%	100%	100%	98%	98%	98%	98%
Sp Ed Funding for Children	100%	100%	100%	100%	100%	100%	100%	100%	98%	98%	98%	98%
Sp Ed Private Tuition	99%	100%	87%	91%	94%	94%	94%	94%	94%	94%	94%	94%
Sp Ed Summer School	100%	100%	100%	96%	81%	75%	84%	89%	75%	75%	89%	0%
Sp Ed Transportation	100%	100%	100%	99%	97%	95%	97%	92%	95%	95%	92%	91%
Reg/Voc Transportation	100%	74%	77%	76%	74%	71%	70%	71%	71%	71%	71%	84%
Ill Free Lunch/Breakfast	83%	78%	73%	38%	36%	21%	22%	22%	21%	21%	22%	29%(est.)
Sp Ed Orphanage (14-7.03)	100%	100%	100%	100%	100%	100%	100%	100%	100%	100%	100%	100%(est.)
Reg Ed Orphanage (18-3)	100%	100%	100%	100%	100%	100%	100%	100%	100%	100%	100%	100%(est.)

NOTES: \*Final data is not yet available.  
PA 100-0465 eliminated the Sp Ed Personnel, Sp Ed Funding for Children and Sp Ed Summer programs beginning with FY18  
FY96 was the first year of the Chicago Block Grants. They were repealed with PA 100-0465 effective for FY18  
Appropriation and claim amounts include amounts funded through Chicago Block Grants through FY17  
Current fiscal year appropriations pay previous school year claims except for Ill Free Lunch/Breakfast and the two Orphanage programs

**Receipts and Expenditures for Illinois Public School Districts**  
(Dollars in Millions)  
(105 ILCS 5/2-3.11)

	FY 2009	FY 2010	FY 2011	FY2012	FY 2013	FY 2014	FY 2015	FY 2016
<b>Receipts</b>								
Local Taxes/Payments								
in Lieu of Taxes	14,534.5	15,258.2	15,234.4	16,027.9	16,164.4	16,524.0	16,820.2	17,183.3
Other Local	1,390.3	1,322.6	1,331.7	1,249.1	1,240.8	1,188.1	1,232.4	1,306.7
General State Aid	3,527.5	381.7	4,484.8	4,308.8	4,246.4	4,391.1	4,376.0	4,639.2
Other State Funds	2,024.2	5,301.0	2,489.4	2,535.7	2,631.0	2,571.6	2,300.5	1,939.3
Federal Funds	2,911.4	3,163.5	2,640.9	2,127.5	2,078.7	2,094.6	2,051.0	2,122.4
	<u>24,387.9</u>	<u>25,426.9</u>	<u>26,181.1</u>	<u>26,248.9</u>	<u>26,361.3</u>	<u>26,769.3</u>	<u>26,780.0</u>	<u>27,190.9</u>
<b>Expenditures</b>								
Instruction	12,195.9	12,784.1	12,712.5	12,960.3	13,241.5	13,789.4	14,227.2	14,439.4
General Administration	849.4	863.7	859.8	893.1	887.1	904.8	908.7	904.7
Support Services	8,511.5	8,462.9	8,086.5	8,067.7	8,223.8	8,496.5	8,446.7	8,458.9
Community Services	134.4	190.3	123.5	121.4	129.7	136.9	143.2	142.3
Payments to Other								
Gov't. Units (In state, out of state)	676.9	737.7	706.8	732.0	728.7	725.4	709.4	725.3
Debt Service Retired	1,081.5	1,134.6	1,116.9	1,153.8	1,226.7	1,355.0	1,415.9	1,458.6
Debt Services (Interest)	798.0	817.7	856.0	907.2	921.9	917.4	930.9	971.8
Capital Outlay/Non-Capitalized Equip.	<u>2,198.9</u>	<u>1,903.9</u>	<u>1,856.7</u>	<u>1,988.1</u>	<u>1,932.1</u>	<u>1,974.6</u>	<u>2,012.0</u>	<u>1,987.5</u>
	26,446.4	26,894.9	26,318.5	26,823.6	27,291.6	28,300.0	28,7940.0	29,088.4

Data source: School District Annual Financial Report, Financial Data Table.

**Public Schools Finance Statistics**  
(105 ILCS 5/2-3.11)

	<b>District Type</b>	<b>Per Capita Tuition Charge</b>	<b>Operating Expense per Pupil</b>
<b>FY 2016</b>	Elementary	\$11,236	\$12,504
	Secondary	15,912	17,044
	Unit	10,620	12,374
	ALL DISTRICTS	11,422	12,973
	Chicago SD 299	12,544	14,973
<b>FY 2015</b>	Elementary	\$10,925	\$12,173
	Secondary	15,398	16,494
	Unit	10,382	12,354
	ALL DISTRICTS	11,133	12,808
	Chicago SD 299	12,229	15,310
<b>FY 2014</b>	Elementary	\$10,450	\$11,846
	Secondary	14,900	16,165
	Unit	9,947	12,096
	ALL DISTRICTS	10,677	12,521
	Chicago SD 299	11,707	15,120
<b>FY 2013</b>	Elementary	\$10,161	\$11,594
	Secondary	14,259	15,621
	Unit	9,363	11,532
	ALL DISTRICTS	10,167	12,045
	Chicago SD 299	10,412	13,791
<b>FY 2012</b>	Elementary	\$10,105	\$11,457
	Secondary	13,891	15,138
	Unit	9,026	11,338
	ALL DISTRICTS	9,911	11,842
	Chicago SD 299	9,462	13,433

District types:

Elementary School Districts: PreK-8  
 Secondary (High) School Districts: 9-12  
 Unit School Districts: PreK-12

Data source: School Business Services OEPP/PCTC/ADA State Totals Historical File.

**Total Appropriations per Pupil Enrolled**  
(105 ILCS 5/2-3.11)

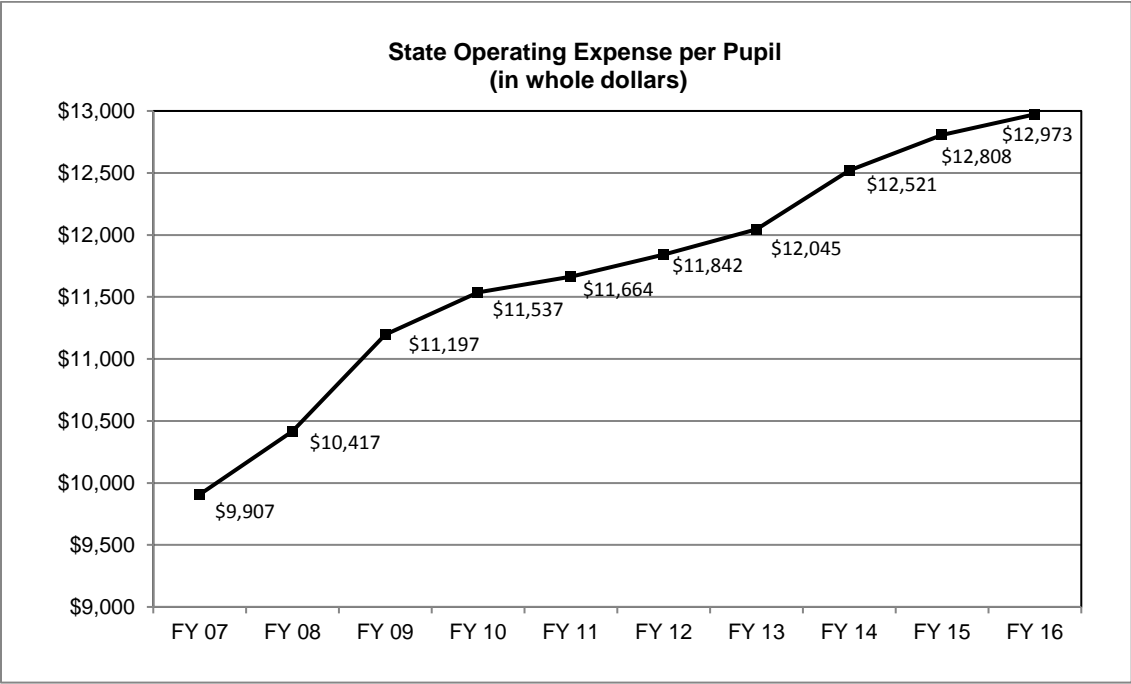
<b>Fiscal Year</b>	<b>Total Appropriations<sup>a</sup></b>	<b>Fall Enrollment<sup>b</sup></b>	<b>Total Appropriations Per Pupil Enrolled<sup>c</sup></b>	<b>% Change in Dollars Per Pupil Enrolled</b>
2017	\$32,814.0	2,028,162	\$16,179	5.6%
2016	31,289.8	2,041,779	15,325	4.7
2015	30,107.2	2,057,858	14,630	1.6
2014	29,861.2	2,073,480	14,401	4.0
2013	28,453.1	2,054,155	13,851	0.7
2012	28,701.7	2,087,628	13,748	1.5
2011	28,091.7	2,074,806	13,539	-0.2
2010	28,571.8	2,105,779	13,568	9.0
2009	26,293.9	2,112,132	12,449	7.0
2008	24,589.0	2,113,435	11,635	8.8
2007	22,648.4	2,118,692	10,690	6.2
2006	21,264.7	2,111,706	10,070	2.4
2005	20,631.7	2,097,503	9,836	2.9
2004	20,085.2	2,100,961	9,560	4.6
2003	19,051.5	2,084,187	9,141	2.2
2002	18,528.1	2,071,391	8,945	2.0
2001	17,984.7	2,051,021	8,769	5.2
2000	16,827.2	2,018,316	8,337	7.1
1999	15,659.8	2,011,814	7,784	8.5
1998	14,319.2	1,996,184	7,173	7.6

Note: Appropriations and percent changes have been updated for fiscal years 2010 through 2015.

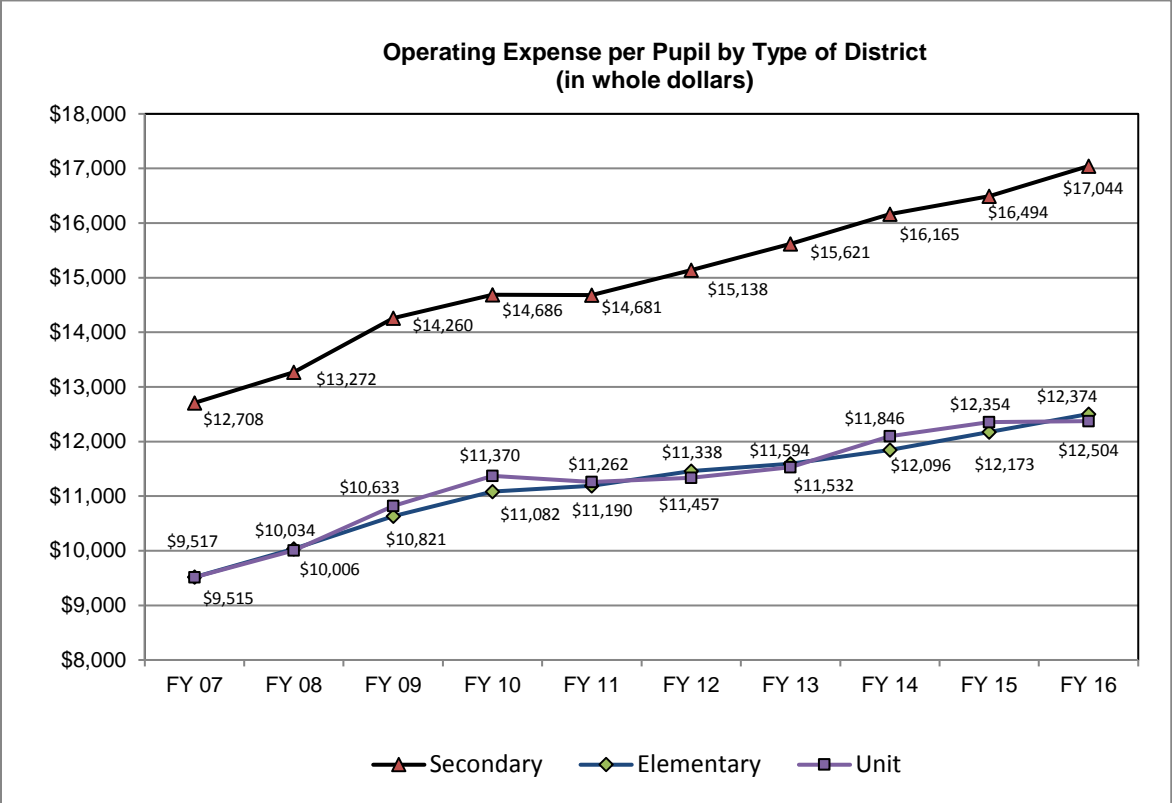
<sup>a</sup> In millions; includes state, federal, and local funds and pensions.

<sup>b</sup> Prior to FY 2016, Fall Enrollment was a snapshot of student enrollment taken from the Student Information System as of October 15. Beginning in FY 2016, Fall Enrollment is the State Report Card total and verified by districts.

<sup>c</sup> In whole dollars.

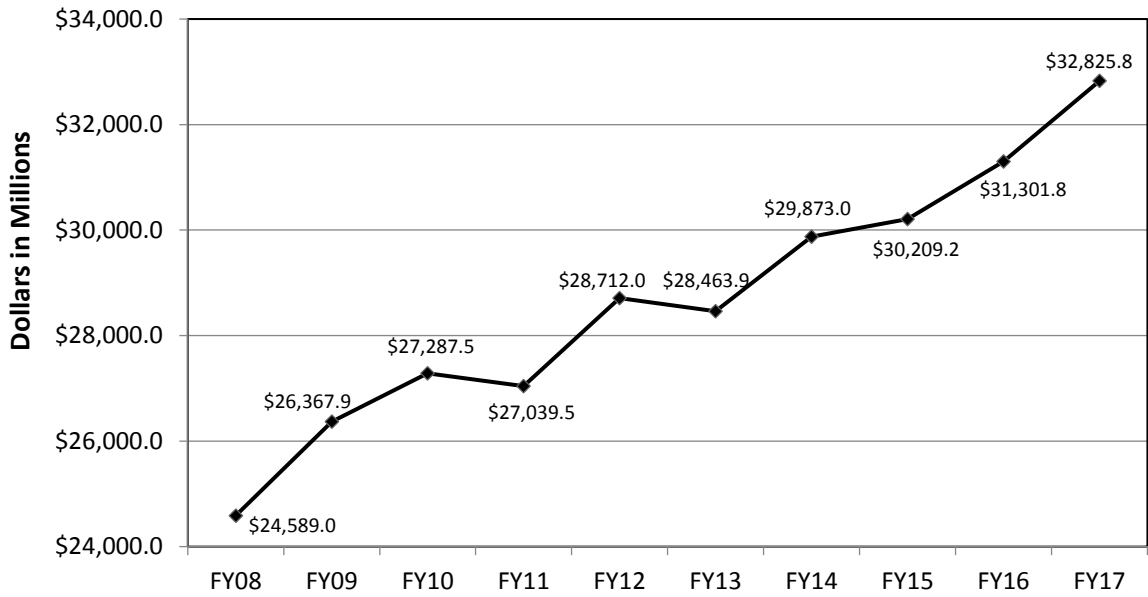


Data source: School Business Services OEPP/PCTC/ADA State Totals Historical File.

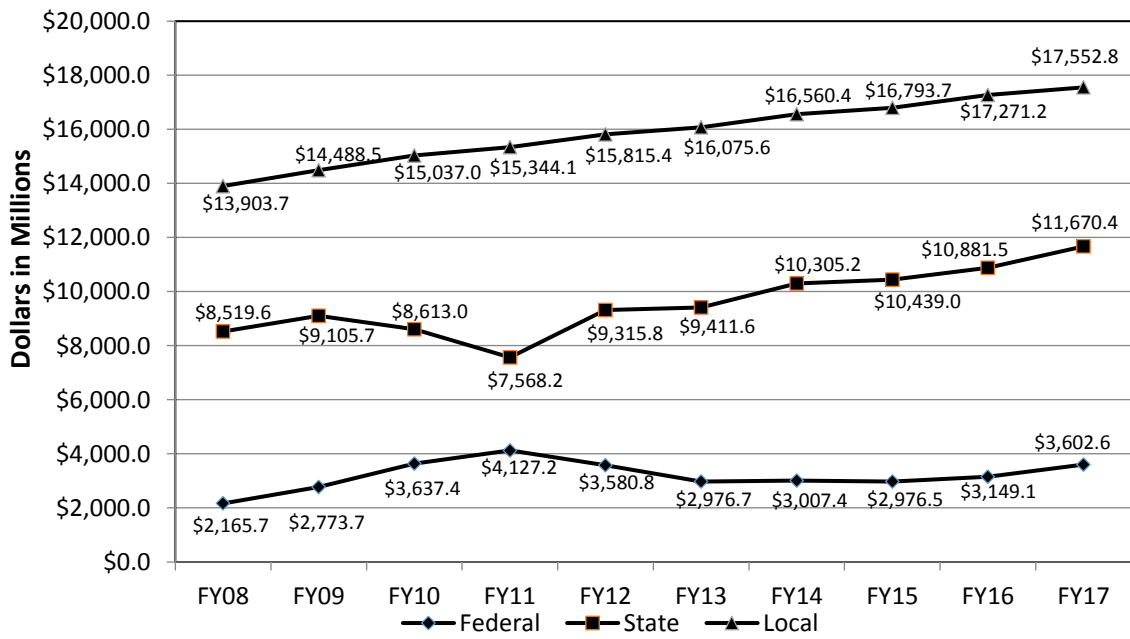


Data source: School Business Services OEPP/PCTC/ADA State Totals Historical File.  
Based on school district fiscal year Annual Financial Reports submitted at the end of the calendar year and released in the spring of the following calendar year.

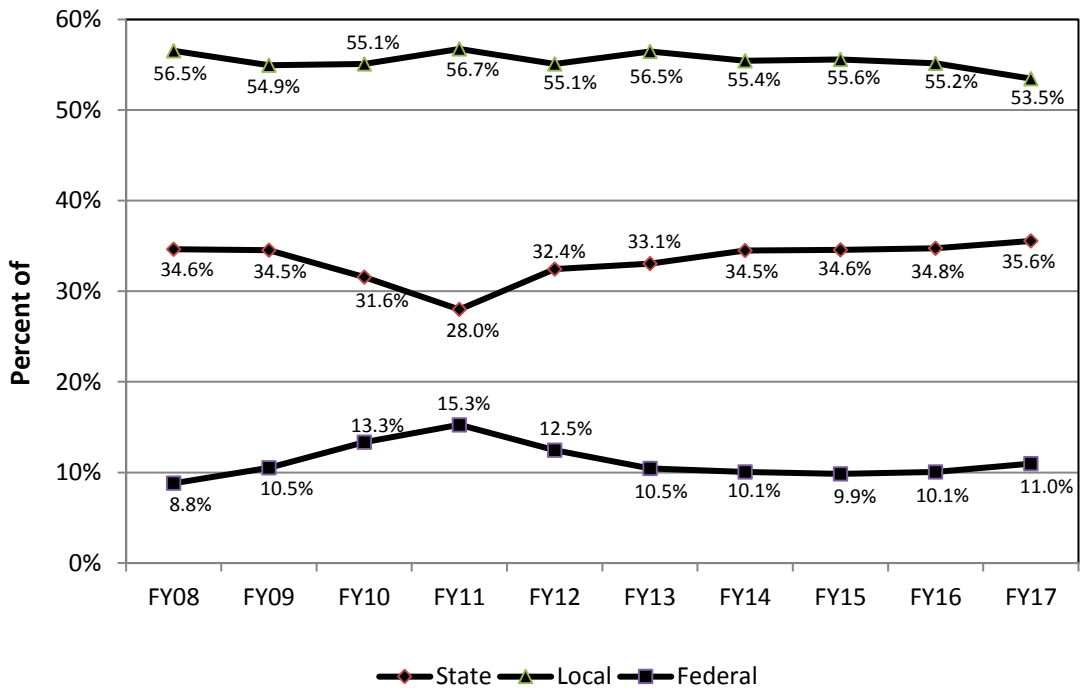
### Total Funding Elementary and Secondary Education



### State, Local and Federal Funding



### Percentages of State, Local and Federal Funding





# SCHOOLS AND DISTRICTS

## A Profile of Illinois Public Schools in 2016-17 Selections from School Report Card Files (regular public schools only)

### SUMMARY

<b>852 districts (regular public)</b>	<b>87.0% graduation rate</b>
<b>3,796 schools</b>	<b>2.1% dropout rate</b>
<b>2,028,162 students</b>	<b>6.9% mobility rate</b>
<b>50.2% low-income enrollment</b>	<b>10.7% EL enrollment</b>

### TRENDS

**Number of school districts 852.** The number of operating school districts with enrollment declined from 871 in 2007 to 852 in 2017; there were 368 elementary districts, 96 high school districts and 388 unit districts.

**Decrease in the number of public schools.** The number of public schools decreased from 3,888 in 2007 to 3,796 in 2017. These figures include charter schools and regular public schools that issue school report cards.

**No change in average school size.** The average school size remained the same at 534 in 2007 and in 2017.

**Student enrollment decreased.** Student enrollment in regular Illinois public schools decreased from 2,077,856 in 2007 to 2,028,162 in 2017, according to the Illinois Report Card enrollment figures. Report Card enrollment is taken as of Oct. 1 and is verified by the district superintendent. Student enrollment has been based on the home school since 2011.

**Low-income enrollment exceeded 50 percent.** Low-income students increased from 40.9 percent of the enrollment in 2007 to 50.2 percent in 2017. Pupils are considered low-income if they are from families receiving public aid, are living in institutions for neglected or delinquent children, are being supported in foster homes with public funds, or are eligible for free or reduced-price lunches.

**Mobility rate declined.** The mobility rate declined from 15.2 percent in 2007 to 6.9 percent in 2017. The mobility rate is the sum of the students transferred out and students transferred in, divided by the average daily enrollment, multiplied by 100. A student may be counted more than once, depending on the number of transfers the student makes in the year.

**Percentage of minority students exceeded 50 percent.** Students who are Black, Hispanic, Asian, American Indian or Alaskan Native, Hawaiian or Other Pacific Islander, or Two or More Races made up 51.5 percent of the enrollment in 2017, up from 45.1 percent in 2007. The increase is mainly among Hispanic, Asian, and Two or More Races students.

**EL students increased in last decade.** The percentage of English Learners (EL) increased from 7.2 percent in 2007 to 10.7 percent in 2017. EL students include those who are eligible for bilingual education.

**Dropout rate decreased.** The dropout rate declined from 3.5 percent in 2007 to 2.1 percent in 2017. Dropouts include students in grades 9-12 whose names have been removed from the district roster for any reason other than death, extended illness, graduation/completion of a program of studies, transfer to another school, or expulsion.

**Increased in chronic truancy rate.** The chronic truancy rate was 10.8 percent in 2017, compared to 2.5 percent reported for 2007. Chronic truants include students subject to compulsory attendance who have been absent without valid cause for 5 percent (nine or more) of the past 180 school days. The definition of chronic truants was changed in 2011. Prior to 2011, chronic truants were defined as missing 10 percent of the previous 180 days.

**Average class size decreased at most levels.** Between 2007 and 2017, the average class sizes for:

- Kindergarten decreased from 20.9 to 19.1
- Grade 1 decreased from 21.0 to 19.8
- Grade 3 decreased from 21.8 to 20.8
- Grade 6 decreased from 22.6 to 21.3
- Grade 8 decreased from 21.9 to 20.6
- High School (grades 9-12) increased from 18.9 to 19.5

**Percentage of Non-White teachers increased in the last decade.** Non-White accounted for 16.7 percent of the classroom teachers in 2017 compared to 14.9 percent in 2007. Non-White teachers include those who are Black, Hispanic, Asian, American Indian or Alaskan Native, Hawaiian or Other Pacific Islander, Two or More Races, or unknown.

**Slight increase in the percentage of male classroom teachers.** There is an upward trend in the percentage of male teachers, increasing from 23.0 percent of the teaching force in 2007 to 23.3 percent in 2017.

**Percentage of teachers with graduate degrees increased.** In 2017, teachers who had a master's degree or higher accounted for 60.9 percent of the classroom teachers in Illinois public schools, up from 52.3 percent in 2007.

**Pupil-teacher ratio had a slight decrease at the elementary level and an increase at the secondary level.** Between 2007 and 2017, the elementary pupil-teacher ratio decreased from 18.8:1 to 18.7:1 while the secondary pupil-teacher ratio increased to 19.4:1 from 18.8:1.

**Graduation rate increased.** The four-year graduation rate in 2017 was 87.0 percent, increasing from 85.9 percent in 2007.

**Illinois Public School Districts by Type**  
(105 ILCS 5/2-3.11)

<b>School Year</b>	<b>Elementary Districts</b>	<b>Secondary Districts</b>	<b>Unit Districts</b>	<b>Total Districts<sup>a</sup></b>
2016-17	368	98	386	852
2015-16	369	98	386	853
2014-15	373	99	385	857
2013-14	374	100	386	860
2012-13	375	100	387	862
2011-12	377	100	388	865
2010-11	378	101	388	867
2009-10	378	101	389	868
2008-09	378	101	390	869
2007-08	378	102	390	870
2006-07	376	102	395	873
2005-06	377	102	395	874
2004-05	379	103	399	881
2003-04	381	103	404	888
2002-03	383	103	407	893
2001-02	383	103	407	893
2000-01	383	103	408	894
1999-00	384	103	409	896
1998-99	385	104	408	897
1997-98	388	106	406	900

<sup>a</sup> Does not include four state-operated school systems: the two state laboratory school systems, the Illinois Mathematics and Science Academy, and the Illinois Department of Rehabilitation school system.

Note: Beginning with this report, school years 1996-97 through 2015-16 were revised to reflect the number of funded districts rather than the number of districts with students enrolled.

Data source: CDS File Record Counts.

**Comparison of Public School Districts by Type and Enrollment  
2006-07 and 2016-17  
(105 ILCS 5/2-3.11)**

District Enrollment	Elementary Districts		Secondary Districts		Unit Districts		Total Districts*	
	06-07	16-17	06-07	16-17	06-07	16-17	06-07	16-17
25,000 or more	0	0	0	0	5	5	5	5
10,000 to 24,999	4	4	2	2	12	13	18	19
5,000 to 9,999	10	11	12	13	25	26	47	50
2,500 to 4,999	56	53	23	23	33	34	112	110
1,000 to 2,499	95	100	28	27	121	110	244	237
600 to 999	58	54	15	14	83	77	156	145
300 to 599	54	49	10	12	96	96	160	157
Fewer than 300	99	97	10	7	20	25	129	129
<b>Total</b>	<b>392</b>	<b>368</b>	<b>100</b>	<b>98</b>	<b>395</b>	<b>386</b>	<b>871</b>	<b>852</b>

\* Does not include one non-operating district, Department of Corrections/Juvenile Justice school district, state-operated districts, special education districts, and state charter districts.

Data sources: Fall Housing Enrollment from School Report Card, CDS File Record Counts.

**Comparison of Public and Nonpublic Attendance Centers  
2006-07 and 2016-17  
(105 ILCS 5/2-3.11)**

	Public Attendance Centers		Nonpublic Attendance Centers	
	06-07	16-17	06-07	16-17
Elementary	2,611	2,481	Elementary*	793 675
Junior High	612	611	Secondary	110 110
Secondary	674	712	Unit	109 93
Special Education and Others	341	434	Special Education	14 14
<b>Total</b>	<b>4,238</b>	<b>4,238</b>	<b>Total</b>	<b>1,026 892</b>

\* Includes Junior High.

Data sources: Fall Housing Enrollment from School Report Card, CDS File Record Counts.

**Public School Recognition Committee**  
**Act or Omissions Status Report for the 2016-17 School Year**  
(105 ILCS 5/1A-4)

<b>Region</b>	<b>Facility</b>	<b>Final Assignment</b>	<b>Violation</b>	<b>Date of District Notification</b>
13-Clinton/Jefferson/Marion/Washington	Opdyke-Belle-Rive CCSD 5	Recognized Pending Further Review	Refer to ROE evaluation	June 29, 2017, via U.S. Mail, certified, return- receipt
13-Clinton/Jefferson/Marion/Washington	Grand Prairie CCSD 6	Recognized Pending Further Review	Refer to ROE evaluation	June 29, 2017, via U.S. Mail, certified, return- receipt
13-Clinton/Jefferson/Marion/Washington	Mt Vernon Twp HSD 201	Recognized Pending Further Review	Refer to ROE evaluation	June 29, 2017, via U.S. Mail, certified, return- receipt
19-DuPage	Center Cass SD 66	Recognized Pending Further Review	Refer to ROE evaluation	June 29, 2017, via U.S. Mail, certified, return- receipt
21-Franklin/Johnson/Massac/Williamson	Frankfort CUSD 168	Recognized Pending Further Review	Refer to ROE evaluation	June 30, 2017, via U.S. Mail, certified, return- receipt
28-Bureau/Henry/Stark	Malden CCSD 84 -Malden Grade School	Recognized Pending Further Review	Refer to ROE evaluation	June 29, 2017, via U.S. Mail, certified, return- receipt

28-Bureau/Henry/Stark	Cherry SD 92	Recognized Pending Further Review	Refer to ROE evaluation	June 29, 2017, via U.S. Mail, certified, return- receipt
28-Bureau/Henry/Stark	Spring Valley CCSD 99 -John F Kennedy Elem School	Recognized Pending Further Review	Refer to ROE evaluation	June 29, 2017, via U.S. Mail, certified, return- receipt
28-Bureau/Henry/Stark	DePue USD 103 - DePue High School	Recognized Pending Further Review	Refer to ROE evaluation	June 29, 2017, via U.S. Mail, certified, return- receipt
28-Bureau/Henry/Stark	La Moille CUSD 303	Recognized Pending Further Review	Refer to ROE evaluation	June 29, 2017, via U.S. Mail, certified, return- receipt
28-Bureau/Henry/Stark	Princeton HSD 500	Recognized Pending Further Review	Refer to ROE evaluation	June 29, 2017, via U.S. Mail, certified, return- receipt
28-Bureau/Henry/Stark	Colona SD 190	Recognized Pending Further Review	Refer to ROE evaluation	June 29, 2017, via U.S. Mail, certified, return- receipt
28-Bureau/Henry/Stark	AIWood CUSD 225	Recognized Pending Further Review	Refer to ROE evaluation	June 30, 2017, via U.S. Mail, certified, return- receipt

28-Bureau/Henry/Stark	Wethersfield CUSD 230	Recognized Pending Further Review	Refer to ROE evaluation	June 29, 2017, via U.S. Mail, certified, return- receipt
34-Lake	Lake Forest CHSD 115 - Lake Forest High School	Recognized Pending Further Review	Refer to ROE evaluation	June 29, 2017, via U.S. Mail, certified, return- receipt
34-Lake	Round Lake CUSD 116 - Round Lake Senior High School	Recognized Pending Further Review	Refer to ROE evaluation	June 29, 2017, via U.S. Mail, certified, return- receipt
50-Saint Clair	Brooklyn UD 188	Recognized Pending Further Review	Refer to ROE evaluation	June 30, 2017, via U.S. Mail, certified, return- receipt
50-Saint Clair	East St Louis SD 189	Recognized Pending Further Review	Refer to ROE evaluation	June 30, 2017, via U.S. Mail, certified, return- receipt

**Interim Superintendents for the 2016-17 School Year**  
**(105 ILCS 5/10-21.4)**

The School Code requires all school districts “to employ a superintendent who shall have charge of the administration of the schools under the direction of the board of education” (105 ILCS 5/10-21.4). The School Code does not, however, further define the ways in which school districts are permitted to employ a superintendent. For example, the School Code does not require, on its face, that a school district superintendent be hired “full-time,” nor does the School Code, on its face, prohibit a school district from retaining a retired district superintendent to work in that school district for less than 120 days in a school year.

ISBE has, despite the lack of clarity in the law, determined what is and what is not an acceptable employment practice and has historically taken action pursuant to Section 1.20 of its administrative rules (23 Ill. Admin. Code 1.20) to reduce the recognition status of school districts that have not shown a commitment to employing a full-time district superintendent. Regional superintendents have ensured compliance consistency.

In order to clarify the responsibilities of school districts for employing a full-time district superintendent, ISBE conducted a rulemaking in fall 2010 to define the circumstances under which a superintendent must be employed. The Joint Committee on Administrative Rules subsequently objected to the proposed modifications, citing ISBE’s lack of statutory authority to limit employment. ISBE subsequently agreed to withdraw the rulemaking. Therefore, until the issue is clarified in statute, ISBE will not take compliance action against a school district that chooses to employ either an interim superintendent or a superintendent on less than a full-time basis.



# STUDENTS

## Public and Nonpublic Prekindergarten through Postgraduate Fall Pupil Enrollment (105 ILCS 5/2-3.11)

School Year	Public	Nonpublic	Total
2016-17	2,028,162	205,263	2,233,425
2015-16	2,041,779	214,631	2,256,410
2014-15	2,057,858	220,144	2,278,002
2013-14	2,073,480	219,700	2,293,180
2012-13	2,054,155	222,122	2,276,277
2011-12	2,087,628	237,377	2,325,005
2010-11	2,074,806	241,323	2,316,129
2009-10	2,105,779	243,680	2,349,459
2008-09	2,112,132	249,373	2,361,505
2007-08	2,113,435	265,276	2,378,711
2006-07	2,118,692	244,188	2,362,880
2005-06	2,111,706	267,651	2,379,357
2004-05	2,097,503	225,765	2,323,268
2003-04	2,100,961	312,891	2,413,780
2002-03	2,084,187	306,047	2,390,234
2001-02	2,071,391	317,198	2,388,589
2000-01	2,051,021	323,231	2,374,252
1999-00	2,018,316	323,869	2,342,185
1998-99	2,011,814	322,664	2,334,478
1997-98	1,996,184	321,406	2,317,590

Notes:

- Fall Housing Enrollment is a snapshot of student enrollment as of October 15. These enrollment data are not verified by districts. Prior to FY 2016, Fall Enrollment was a snapshot of student enrollment taken from the Student Information System as of October 15. Beginning in FY 2016, Fall Enrollment is the State Report Card total and verified by districts.
- Nonpublic schools report data voluntarily on an annual basis.

Data source: Student Information System, School Report Card.

**Comparison of Public School Enrollment  
2006-07 and 2016-17  
(105 ILCS 5/2-3.11)**

Grade Level	2006-07	2016-17	Percent Change
Pre-K	59,210	47,171	-16.5%
Pre-K Bilingual	2,055	14,804	1000.7
Pre-K Special Ed.	14,010	23,591	65.4
Kindergarten	147,440	134,588	-8.9
1 <sup>st</sup> Grade	155,861	140,361	-8.9
2 <sup>nd</sup> Grade	153,266	147,073	-4.2
3 <sup>rd</sup> Grade	155,356	150,292	-3.1
4 <sup>th</sup> Grade	153,480	151,742	-1.7
5 <sup>th</sup> Grade	154,719	149,246	-6.0
6 <sup>th</sup> Grade	160,650	149,688	-8.1
7 <sup>th</sup> Grade	162,594	151,600	-5.5
8 <sup>th</sup> Grade	<u>159,038</u>	<u>150,518</u>	<u>-6.5</u>
Elementary Total	1,477,679	1,410,674	-4.7
9 <sup>th</sup> Grade	180,641	159,584	-11.0
10 <sup>th</sup> Grade	166,115	158,479	-4.2
11 <sup>th</sup> Grade	150,475	150,640	2.1
12 <sup>th</sup> Grade	143,366	148,512	7.2
Post Graduates*	416	*	
Secondary Total	641,013	617,485	-2.2
Ungraded	0	3	
<b>Total Elementary &amp; Secondary</b>	<b>2,118,692</b>	<b>2,028,162</b>	<b>-4.0</b>

\* Reporting of postgraduates ended in FY 2009.

Notes:

- Public schools include Regional Office of Education, Department of Corrections/ Juvenile Justice, special education, and regular education schools.
- Prior to FY 2016, Fall Enrollment was a snapshot of student enrollment taken from the Student Information System as of October 15. Beginning in FY 2016, Fall Enrollment is the State Report Card total and verified by districts.
- 2016 includes students in other sites.

Data sources: Student Information System, School Report Card.

**Comparison of Public School Enrollment  
By Racial/Ethnic Distribution  
2006-07 and 2016-17**

Race	2006-07		2016-17	
	Number	%	Number	%
White Non-Hispanic	1,158,781	54.7	983,275	48.5
Black Non-Hispanic	419,995	19.8	344,943	17.0
Hispanic	408,360	19.3	520,614	25.7
Asian	80,688	3.8	98,800	4.9
American Indian or Alaskan Native	4,426	0.2	8,413	0.4
Hawaiian or Other Pacific Islander	n/a	0.0	2,146	0.1
Two or More Races	46,442	2.2	69,971	3.4
Total Students	2,118,692	100.0	2,028,162	100.0
Total Minority Students	959,911	45.3	1,044,887	51.5

Data source: Fall Housing Report, School Report Card.

**Comparison of Nonpublic School Enrollment  
2006-07 and 2016-17  
(105 ILCS 5/2-3.11)**

Grade Level	2006-07	2016-17	Percent Change
Pre-K	29,115	26,837	-7.8%
Kindergarten	19,366	14,971	-22.7
1 <sup>st</sup> Grade	17,854	13,524	-24.3
2 <sup>nd</sup> Grade	17,292	13,677	-20.9
3 <sup>rd</sup> Grade	17,191	13,529	-21.3
4 <sup>th</sup> Grade	16,899	13,652	-19.2
5 <sup>th</sup> Grade	16,832	13,259	-21.2
6 <sup>th</sup> Grade	17,159	13,670	-20.3
7 <sup>th</sup> Grade	16,645	13,392	-19.5
8 <sup>th</sup> Grade	16,304	13,302	-18.4
Ungraded Elementary	918	359	-60.9
Elementary Special Ed. (PK-8)	<u>2,594</u>	<u>2,714</u>	<u>+4.6</u>
Elementary Total	188,169	152,866	-18.8
9 <sup>th</sup> Grade	14,759	12,737	-13.7
10 <sup>th</sup> Grade	14,068	12,380	-12.0
11 <sup>th</sup> Grade	13,418	12,119	-9.7
12 <sup>th</sup> Grade	12,770	11,963	-6.3
Ungraded Secondary	177	1,814	+924.9
Secondary Special Ed. (9-12)	<u>827</u>	<u>1,364</u>	<u>+64.9</u>
Secondary Total	56,019	52,377	-6.5
Total Elementary & Secondary	244,188	205,263	-15.9

Note: Nonpublic schools report data voluntarily on an annual basis.

**English Learner Enrollments By Native Language  
2016-17**

<b>Native Language</b>	<b>Chicago SD 299 Number</b>	<b>Non-Chicago Number</b>	<b>Statewide Total Number</b>
Spanish	52,547	105,143	157,690
Arabic	1,480	6,075	7,555
Polish	783	5,243	6,026
Urdu	841	2,382	3,223
Pilipino (Tagalog)	391	1,518	1,909
Gujarati	213	1,558	1,771
Mandarin (Chinese)	469	1,236	1,705
Russian	150	1,417	1,567
Vietnamese	361	887	1,248
French	275	1,115	1,390
Cantonese (Chinese)	827	319	1,146
Korean	43	941	984
Hindi	112	983	1,095
Telugu (Telegu)	59	1,119	1,178
Ukrainian	333	633	966
Other	206	720	926
Assyrian (Syriac, Aramaic)	192	587	779
Japanese	47	676	723
Tamil	38	636	674
Other	<u>2,933</u>	<u>10,097</u>	<u>13,030</u>
Total Enrollment	62,300	143,285	205,585

Data Source: Student Information System.

**English Learners by Reclassification Status and School Year Outcome**  
**2016-17**  
(105 ILCS 5/1A-4)

<b>Reclassification Status</b>	<b>Chicago SD 299 Number</b>	<b>Non-Chicago Number</b>
Reclassified <sup>a</sup>	2,623	8,468
Not Reclassified	59,677	134,817
Promoted to next grade or otherwise retained	55,817	125,847
Withdrawn from EL classes by parents	0	1,274
Transferred <sup>b</sup>	2,354	5,197
Graduated	1,117	1,982
Dropped out <sup>c</sup>	371	479
Other outcome <sup>d</sup>	<u>18</u>	<u>38</u>
<b>Total Students</b>	<b>62,300</b>	<b>143,285</b>

Notes: <sup>a</sup> English Learners who attained English language proficiency as defined by the state (a 4.8 Overall Composite Proficiency Level on the ACCESS for ELs measure) in 2016-17.

<sup>b</sup> Transferred includes students transferred to another district, home schooled, private schooled, or moved to unknown.

<sup>c</sup> Dropped out includes students who dropped out or transferred to a GED program.

<sup>d</sup> Other outcomes include death, age out, and the certificate of completion.

Data Source: Student Information System.

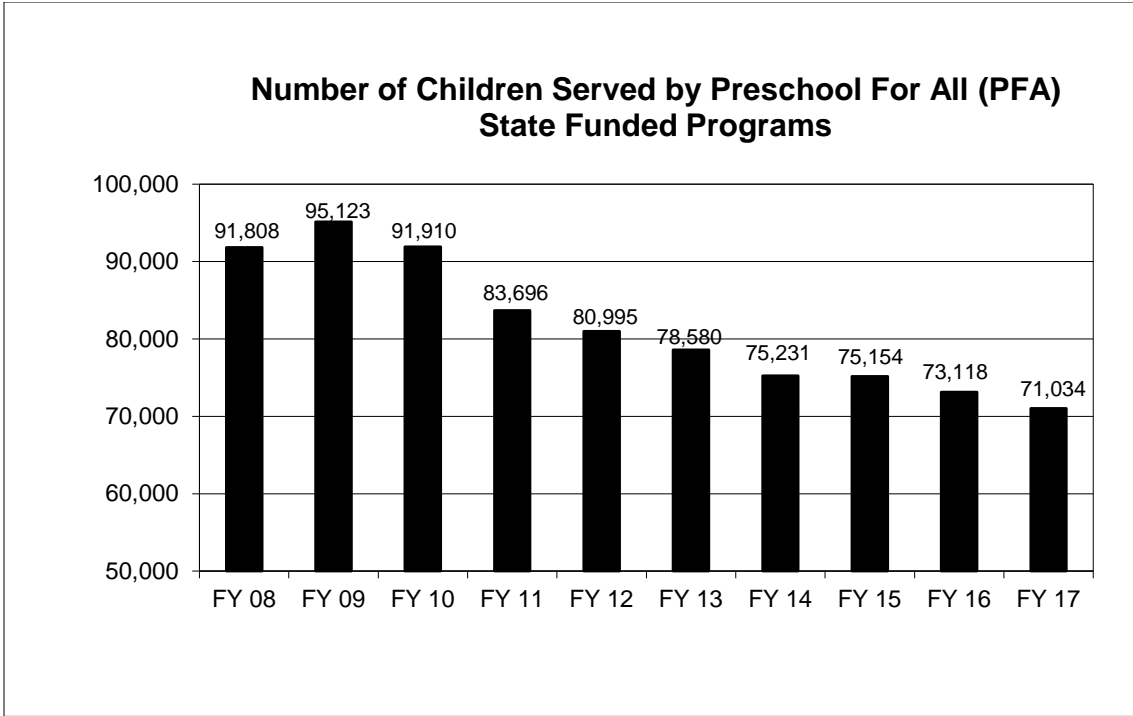
**School Districts That Served More Than 1,000 English Learners  
2016-17**

<b>School District Name</b>	<b>Number</b>	<b>% of Statewide EL Enrollment</b>
City of Chicago SD 299	62,300	30.3
SD U-46	10,824	5.3
Cicero SD 99	5,933	2.9
Waukegan CUSD 60	5,100	2.5
Aurora East USD 131	4,845	2.4
Rockford SD 205	3,793	1.8
Schaumburg CCSD 54	2,940	1.4
Palatine CCSD 15	2,925	1.4
CUSD 300	2,852	1.4
Joliet PSD 86	2,471	1.2
Wheeling CCSD 21	2,438	1.2
Aurora West USD 129	2,405	1.2
Valley View CUSD 365U	2,327	1.1
CCSD 59	2,311	1.1
Indian Prairie CUSD 204	2,171	1.1
West Chicago ESD 33	2,083	1.0
Round Lake CUSD 116	1,818	0.9
Plainfield SD 202	1,723	0.8
Maywood-Melrose Park-Broadview 89	1,377	0.7
CCSD 62	1,331	0.6
Addison SD 4	1,320	0.6
CUSD 200	1,226	0.6
J S Morton HSD 201	1,216	0.6
East Maine SD 63	1,195	0.6
Burbank SD 111	1,190	0.6
Belvidere CUSD 100	1,050	0.5
Champaign CUSD 4	1,014	0.5

Data Source: Student Information System.

**English Learner Enrollment**

	2012-13	2013-14	2014-15	2015-16	2016-17
Chicago District 299	60,818	60,154	63,451	62,583	62,300
Non-Chicago Districts	<u>129,354</u>	<u>126,492</u>	<u>137,841</u>	<u>139,391</u>	<u>143,285</u>
Total Enrollment	190,172	186,646	201,292	201,974	205,585



Data Sources: Student Information System, Early Childhood Electronic Grant Management System.

**High School Graduates  
(105 ILCS 5/2-3.11)**

School Year	Public	Nonpublic	Total
2016-17	139,133	14,082	153,215
2015-16	137,296	12,541	149,837
2014-15	137,290	15,633	152,923
2013-14	139,056	15,598	154,654
2012-13	139,187	14,230	153,417
2011-12	134,260	17,514	151,774
2010-11	132,648	17,038	149,686
2009-10	139,870	17,038	156,908
2008-09	132,123	15,970	148,093
2007-08	135,143	16,271	151,414

Note: Nonpublic schools report data voluntarily on an annual basis.

Data sources: Student Information System; Nonpublic Registration, Enrollment and Staff Report.

## 2016-17 High School Dropout Rate by Grade Level, Gender, and Race/Ethnicity (105 ILCS 5/1A-4)

	9th Grade		10th Grade		11th Grade		12th Grade		Total		All
	Male	Female	Male	Female	Male	Female	Male	Female	Male	Female	
<b>White</b>											
# of Dropouts	229	165	398	284	629	443	929	616	2,185	1,508	3,693
Statewide Enroll	40,602	37,992	40,190	38,234	40,022	37,512	41,022	37,701	161,836	151,439	313,275
DROPOUT RATE	0.56%	0.43%	0.99%	0.74%	1.57%	1.18%	2.26%	1.63%	1.35%	1.00%	1.18%
<b>Black/African Am</b>											
# of Dropouts	371	304	891	708	638	547	556	386	2,456	1,945	4,401
Statewide Enroll	14,115	13,332	14,217	13,772	12,397	12,889	12,337	12,167	53,066	52,160	105,226
DROPOUT RATE	2.63%	2.28%	6.27%	5.14%	5.15%	4.24%	4.51%	3.17%	4.63%	3.73%	4.18%
<b>Am Indian-Alaskan</b>											
# of Dropouts	4	4	11	2	11	4	7	5	33	15	48
Statewide Enroll	261	261	235	219	198	198	213	187	907	865	1,772
DROPOUT RATE	1.53%	1.53%	4.68%	0.91%	5.56%	2.02%	3.29%	2.67%	3.64%	1.73%	2.71%
<b>Asian</b>											
# of Dropouts	10	8	20	7	15	11	18	19	63	45	108
Statewide Enroll	3,786	3,536	3,745	3,666	3,737	3,671	3,586	3,418	14,854	14,291	29,145
DROPOUT RATE	0.26%	0.23%	0.53%	0.19%	0.40%	0.30%	0.50%	0.56%	0.42%	0.31%	0.37%
<b>Native Hawaiian/ Pacific Islander</b>											
# of Dropouts	101	87	1	86	1	2	1	3	3	5	8
Statewide Enroll	0.00%	0.00%	1.11%	0.00%	1.27%	2.86%	1.45%	4.69%	0.88%	1.63%	1.24%
DROPOUT RATE	0.00%	0.00%	1.11%	0.00%	1.27%	2.86%	1.45%	4.69%	0.88%	1.63%	1.24%
<b>Hispanic</b>											
# of Dropouts	398	195	686	433	685	484	677	489	2,446	1,601	4,047
Statewide Enroll	21,145	19,660	20,448	19,027	18,028	17,733	17,120	16,736	76,741	73,156	149,897
DROPOUT RATE	1.00%	0.99%	3.35%	2.28%	3.80%	2.73%	3.95%	2.92%	3.19%	2.19%	2.70%
<b>Multiracial</b>											
# of Dropouts	40	26	38	40	62	51	65	42	205	159	364
Statewide Enroll	2,557	2,419	2,253	2,297	2,029	2,077	2,008	1,884	8,847	8,677	17,524
DROPOUT RATE	1.56%	1.07%	1.69%	1.74%	3.06%	2.46%	3.24%	2.23%	2.32%	1.83%	2.08%
<b>Totals</b>											
# of Dropouts	1,052	702	2,045	1,474	2,041	1,542	2,253	1,560	7,391	5,278	12,669
Statewide Enroll	82,567	77,287	81,178	77,301	76,490	74,150	76,355	72,157	316,590	300,895	617,485
DROPOUT RATE	1.27%	0.91%	2.52%	1.91%	2.67%	2.08%	2.95%	2.16%	2.33%	1.75%	2.05%
<b>Special Populations</b>											
# of Dropouts		<b>All ELL</b>		<b>All Migrant</b>		<b>All F&amp;RL</b>		<b>All IEP</b>			
Statewide Enroll		947		2		9,811		2,841			
DROPOUT RATE		26,035		81		274,045		79,128			
		3.64%		2.47%		3.58%		3.59%			

Data source: Student Information System.



## Selected School Report Card Variables and Statewide Trend Data (105 ILCS 5/1A-4 & 5/2-3.11)

Report Card Variable	2007-08	2008-09	2009-10	2010-11	2011-12	2012-13	2013-14	2014-15	2015-16	2016-17
Enrollment Percentage										
White	54.0%	53.3%	52.8%	51.4%	51.0%	50.6%	49.9%	49.3%	48.8%	48.5%
Black	19.2%	19.1%	18.8%	18.3%	18.0%	17.6%	17.5%	17.5%	17.3%	17.0%
Hispanic	19.9%	20.8%	21.1%	23.0%	23.6%	24.1%	24.6%	25.1%	25.5%	25.7%
Asian/Pacific Islander	3.9%	4.1%	4.2%	n/a	n/a	n/a	n/a	n/a	n/a	n/a
Asian	n/a	n/a	n/a	4.1%	4.2%	4.3%	4.5%	4.6%	4.7%	4.9%
Native Hawaiian/Pacific Islander	n/a	n/a	n/a	0.1%	0.1%	0.1%	0.1%	0.1%	0.1%	0.1%
Native American	0.2%	0.2%	0.2%	0.3%	0.3%	0.3%	0.3%	0.3%	0.3%	0.4%
Two or More Races	2.7%	2.5%	2.9%	2.8%	2.8%	3.0%	3.1%	3.1%	3.2%	3.4%
Total Enrollment <sup>a</sup>	2,074,167	2,070,125	2,064,312	2,074,806	2,066,692	2,054,155	2,046,857	2,054,556	2,041,779	2,028,162
Oper Expend Per Pupil <sup>b</sup>	\$9,907	\$10,417	\$11,197	\$11,537	\$11,664	\$11,842	\$12,045	\$12,521	\$12,821	\$12,973
Graduation Rate	86.5%	87.1%	87.8%	83.8%	82.3%	83.2%	86.0%	85.6%	85.5%	87.0%
Low-Income Enrollment	41.1%	42.9%	45.4%	48.1%	49.0%	49.9%	51.5%	54.2%	49.9%	50.2%
EL Enrollment	7.5%	8.0%	7.6%	8.8%	9.4%	9.5%	9.5%	10.3%	10.5%	10.7%
Dropout Rate	4.1%	3.5%	3.8%	2.7%	2.5%	2.4%	2.2%	2.3%	2.0%	2.1%
Chronic Truancy Rate	2.5%	3.7%	3.6%	3.2%	8.6%	9.8%	8.7%	8.7%	9.8%	10.8%
Mobility Rate	14.9%	13.5%	13.0%	12.8%	13.1%	12.8%	12.3%	12.0%	12.2%	6.9%*
Student Attendance Rate	93.3%	93.7%	93.9%	94.0%	94.4%	94.2%	94.5%	94.2%	94.4%	94.0%
Parental Contact	96.8%	96.7%	96.2%	96.0%	95.3%	95.5%	95.7%	95.2%	95.3%	94.9%
Average Class Size										
Kindergarten	20.5	20.5	20.7	20.9	20.9	21.1	21.2	20.7	20.4	19.1
Gr 1	21.0	20.9	21.2	21.6	21.2	21.5	21.6	21.6	21.4	19.8
Gr 3	21.7	21.8	22.1	22.3	22.0	21.9	22.5	22.4	22.5	20.8
Gr 6	22.2	22.0	21.5	22.0	22.4	23.1	23.1	22.7	22.7	21.3
Gr 8	21.5	21.4	21.0	21.3	21.5	22.2	22.6	22.2	21.8	20.6
High School	19.6	19.2	19.7	19.2	19.2	19.9	19.4	19.4	19.0	19.5

Note: Beginning in 2009, district statistics include charter school information.

<sup>a</sup> Enrollment figures taken from the Illinois Report Card. Report Card enrollment is taken as of Oct. 1 and must be verified by the district superintendent.

<sup>b</sup> Prior year expenditures.

\* Beginning in FY17 the student mobility rate replaced the mobility incident rate

# STUDENT PERFORMANCE

## Partnership for Assessment of Readiness for College and Careers (PARCC)

Students in grades 3-8 take the Partnership for Assessment of Readiness for College and Careers (PARCC) consortium test. The PARCC consortium test replaced the Illinois Standards Achievement Test (ISAT) and the Prairie State Achievement Exam (PSAE).

Statewide results provide a new baseline for measuring student progress and therefore cannot be compared to ISAT and PSAE scores.

Final district- and school-level results indicate student performance at each of the five performance levels in English language arts and mathematics by grade level in elementary school and by course level in high school. The table below displays the statewide average percentage of students who meet or exceed standards.

<u>English Language Arts</u>	<u>2015</u>	<u>2016</u>	<u>2017</u>
Grade 3	35.3%	35.5%	36.2%
Grade 4	39.4	36.9	37.1
Grade 5	38.3	35.3	36.6
Grade 6	35.4	34.9	34.9
Grade 7	39.9	37.3	40.0
Grade 8	40.4	39.1	37.4
High School	34.7	34.1	*
<u>Mathematics</u>	<u>2015</u>	<u>2016</u>	<u>2017</u>
Grade 3	34.5	39.6	39.2
Grade 4	27.9	30.5	30.8
Grade 5	26.9	31.7	29.6
Grade 6	27.2	28.7	28.1
Grade 7	27.5	27.3	27.2
Grade 8	32.1	31.8	32.3
High School	18.7	21.8	*

\*Beginning in FY17 students took the SAT in high school.

## Dynamic Learning Maps (DLM)

The Dynamic Learning Maps (DLM) assessment measures student performance on alternate content standards for students with the most significant cognitive disabilities – DLM Essential Elements. Essential Elements detail what children should know and be able to do at a particular grade level.

The Dynamic Learning Maps assessment replaced the Illinois Alternate Assessment (IAA) in 2016. Statewide results provide a new baseline for measuring student progress and therefore cannot be compared to IAA scores.

Final district- and school-level results indicate student performance at each of the five performance levels in English language arts and mathematics by grade level in elementary and high school. The table below displays the statewide average percentage of students who meet or exceed standards.

<u>English Language Arts</u>	<u>2016</u>	<u>2017</u>
Grade 3	15.9%	13.2%
Grade 4	20.1	18.6
Grade 5	23.2	21.0
Grade 6	20.6	17.7
Grade 7	25.4	25.3
Grade 8	27.1	26.4
Grade 11	24.6	26.9

<u>Mathematics</u>	<u>2016</u>	<u>2017</u>
Grade 3	15.6	12.6
Grade 4	18.4	19.8
Grade 5	13.1	8.7
Grade 6	11.7	10.0
Grade 7	6.2	5.2
Grade 8	10.7	7.2
Grade 11	4.0	5.1

## SAT

Beginning with the 2016-17 school year, grade 11 students take the SAT as the high school accountability assessment. Illinois students took the ISBE-sponsored SAT exam for the first time in spring 2017. This assessment serves as a valuable resource for students as it provides a free college entrance exam to every grade 11 student in the state. Providing this resource statewide increases equity of access for students. Illinois is also using this exam for state and federal accountability for both schools and districts in 2017. Because this exam served multiple purposes, student scores have different meanings.

Illinois SAT performance levels are a set of four performance levels with associated cut scores that Illinois educators have determined indicate different levels of mastery of the Illinois Learning Standards.

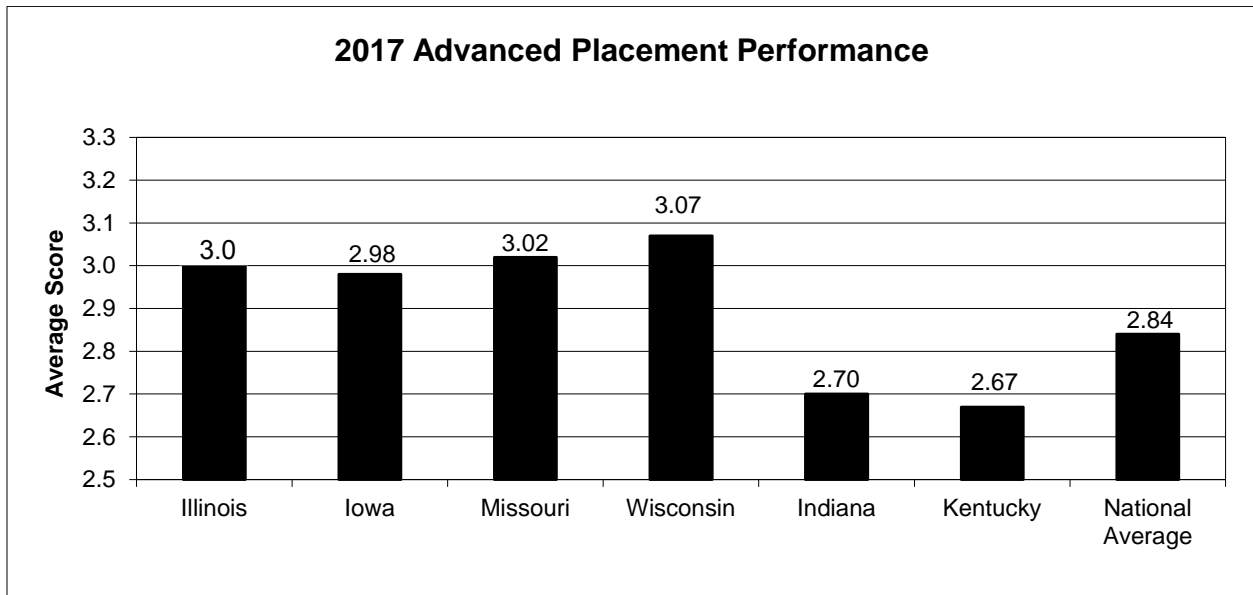
The table below displays the statewide scale scores. The maximum Composite score is 1600; English language arts maximum score is 800; and mathematics maximum score is also 800, which can be compared to national scale scores.\* The table also displays the statewide Proficiency rates in English language arts and mathematics, which represent the percentage of students in the Meets Standards and Exceed Standards performance levels. As each state determines its own performance levels aligning to state standards, the Proficiency rates do not have a national comparison.

\*National scale scores for 2017 Grade 11 available in 2018.

<b>Illinois</b>	Composite Scale	English Scale	English Proficiency	Mathematics Scale	Mathematics Proficiency	Students Tested
2016-17	1015.9	511.5	39.8%	504.4	36.4%	141,551

Note: Scores include public schools only.

Data source: SAT State Scores and Proficiency Levels for the 2017 School Day Administration.



Data source: 2017 College Board AP Summary Reports.

### National Assessment of Educational Progress (NAEP) Average Student Scores for Illinois and U.S. Public Schools

	<u>2009</u>	<u>2011</u>	<u>2013</u>	<u>2015</u>	<u>2017</u>
<u>Reading</u>					
Illinois Grade 4	219	219	219	222	*
U.S. Grade 4	220	220	221	221	*
Illinois Grade 8	265	266	267	267	*
U.S. Grade 8	262	264	266	264	*
Illinois Grade 12	292	n/a	289	n/a	*
U.S. Grade 12	287	n/a	287	n/a	*
<u>Mathematics</u>					
Illinois Grade 4	238	239	239	237	*
U.S. Grade 4	239	240	241	240	*
Illinois Grade 8	282	283	285	282	*
U.S. Grade 8	282	283	284	281	*
Illinois Grade 12	n/a	n/a	154	n/a	*
U.S. Grade 12	n/a	n/a	152	n/a	*
<u>Science</u>					
Illinois Grade 4	148	n/a	n/a	151	*
U.S. Grade 4	149	n/a	n/a	153	*
Illinois Grade 8	148	147	n/a	150	*
U.S. Grade 8	149	151	n/a	153	*

Data source: National Center for Education Statistics, Institute of Educational Sciences.

\*Not available until 2018

**National Assessment of Educational Progress (NAEP)  
Comparison of Illinois and U.S. Achievement Gaps**

<u>Grade 4</u>	2015 Reading		2015 Math		2015 Science	
	<u>Illinois</u>	<u>U.S.</u>	<u>Illinois</u>	<u>U.S.</u>	<u>Illinois</u>	<u>U.S.</u>
White	233	232	248	248	166	166
Black	202	206	215	224	125	133
Hispanic	211	208	228	230	137	139
Asian	248	240	262	259	173	169
American Indian/Alaska Native	*	206	*	228	*	139
Native Hawaiian/Other Pacific Islander	*	212	*	226	*	143
Two or More Races	224	226	244	244	152	158

<u>Grade 8</u>	2015 Reading		2015 Math		2015 Science	
	<u>Illinois</u>	<u>U.S.</u>	<u>Illinois</u>	<u>U.S.</u>	<u>Illinois</u>	<u>U.S.</u>
White	276	273	290	291	162	166
Black	247	247	261	260	126	132
Hispanic	257	253	273	269	139	140
Asian	290	280	309	307	163	166
American Indian/Alaska Native	*	253	*	267	*	139
Native Hawaiian/Other Pacific Islander	*	254	*	277	*	138
Two or More Races	*	267	*	283	*	159

<u>Grade 12</u>	2013 Reading		2013 Math	
	<u>Illinois</u>	<u>U.S.</u>	<u>Illinois</u>	<u>U.S.</u>
White	299	297	165	162
Black	267	268	123	132
Hispanic	278	276	143	141
Asian	303	296	181	174
American Indian/Alaska Native	*	277	*	142
Native Hawaiian/Other Pacific Islander	*	289	*	151
Two or More Races	*	291	*	155

\* Reporting standards not met as the sample n-size was insufficient to permit a reliable estimate.

Data source: National Center for Education Statistics, Institute of Educational Sciences.

# EDUCATORS

## Number of Selected Public School Personnel by Gender Full-Time Equivalents (FTE) 2016-17 (105 ILCS 5/2-3.11)

Staff Category	Male	Female	Total
Prekindergarten Teachers	18	1,348	1,366
Kindergarten Teachers	148	3,949	4,097
Elementary Teachers (1-8)	11,276	53,821	65,097
Secondary Teachers (9-12)	13,398	15,888	29,286
Special Education Teachers	3,599	18,647	22,246
District Superintendents	490	188	678
Principals	1,662	1,913	3,575
Assistant Principals	1,015	1,290	2,305
Supervisors	772	1,617	2,389
Other Administrators	760	822	1,582
School Service Personnel	<u>4,135</u>	<u>34,571</u>	<u>38,706</u>
Total Public School Personnel	37,273	134,054	171,327

## Nonpublic School Personnel Full Time Equivalents (FTE) 2016-17 (105 ILCS 5/2-3.11)

Staff Category	FTE
Prekindergarten Teachers	1,857.1
Kindergarten Teachers	1,207.5
Elementary Teachers (1-8)	8,197.1
Secondary Teachers (9-12)	4,250.8
Special Education Teachers	448.9
Administrative Staff (includes Principals and Assistant Principals)	2,318.3
Pupil Personnel Services Staff	802.1
Support Staff	4,745.5
Supervisory Staff	<u>875.0</u>
Total Nonpublic Personnel (FTE)	24,702.3

Data source: 2016-17 Nonpublic Registration, Enrollment and Staff Report.

**Salaries for Select Full-Time Equivalent Public School Personnel  
2016-17  
(105 ILCS 5/2-3.11)**

<b>Staff Category</b>	<b>Median</b>	<b>Mean</b>
Prekindergarten Teachers	\$49,002	\$52,288
Kindergarten Teachers	56,468	59,460
Elementary Teachers (1-8)	59,024	62,677
Secondary Teachers (9-12)	66,244	71,577
Special Education Teachers	58,398	62,880
District Superintendents	149,865	159,383
Principals	103,804	106,825
Assistant Principals	87,775	92,074
Supervisors	98,891	102,666
Other Administrator	101,335	105,975
School Service Personnel	25,900	40,695

Data Source: Educator Information System.

**Public School Pupil-to-Teacher Ratios**

<b>School Year</b>	<b>Elementary</b>	<b>Secondary</b>
2016-17	18.7	19.4
2015-16	18.7	18.9
2014-15	18.5	18.4
2013-14	18.6	18.1
2012-13	18.7	17.9
2011-12	18.9	18.8
2010-11	18.8	18.9
2009-10	18.2	18.2
2008-09	18.4	18.0
2007-08	18.3	18.0

Data Source: Illinois Report Card.



**Educator Certificates Issued By Type**  
(105 ILCS 5/2-3.11)

<b>Certificates</b>	<b>2012-13</b>	<b>2013-14</b>	<b>2014-15</b>	<b>2015-16</b>	<b>2016-17</b>
Elementary	6,416	n/a	n/a	n/a	n/a
Secondary	4,222	n/a	n/a	n/a	n/a
Early Childhood	1,132	n/a	n/a	n/a	n/a
Special	5,649	n/a	n/a	n/a	n/a
School Service	1,866	n/a	n/a	n/a	n/a
Administrative	3,560	n/a	n/a	n/a	n/a
Transitional Bilingual	529	n/a	n/a	n/a	n/a
Substitute	10,515	n/a	n/a	n/a	n/a
Other	<u>206</u>	<u>n/a</u>	<u>n/a</u>	<u>n/a</u>	<u>n/a</u>
Total	34,095	n/a	n/a	n/a	n/a

Note: Prior to FY 2014, educators were issued certificates. An educator licensure system began in FY 2014, at which time all certificates were converted to licenses.

**Educator Certificates Issued By Evaluation, Entitlement & Exchange**  
(105 ILCS 5/2-3.11)

<b>Certificates</b>	<b>2012-13</b>	<b>2013-14</b>	<b>2014-15</b>	<b>2015-16</b>	<b>2016-17</b>
Evaluation	17,436	n/a	n/a	n/a	n/a
Entitlement	15,811	n/a	n/a	n/a	n/a
Exchange	<u>848</u>	<u>n/a</u>	<u>n/a</u>	<u>n/a</u>	<u>n/a</u>
Total	34,095	n/a	n/a	n/a	n/a

Note: Prior to FY 2014, educators were issued certificates. An educator licensure system began in FY 2014, at which time all certificates were converted to licenses.

**Educator Licenses Issued By Evaluation, Entitlement & Exchange**  
(105 ILCS 5/2-3.11)

<b>Licenses</b>	<b>2012-13</b>	<b>2013-14</b>	<b>2014-15</b>	<b>2015-16</b>	<b>2016-17</b>
Evaluation	n/a	5,275	10,664	21,059	20,501
Entitlement	n/a	5,657	4,749	6,011	5,392
Exchange	<u>n/a</u>	<u>112,380</u>	<u>206</u>	<u>895</u>	<u>952</u>
Total	n/a	123,312	15,619	27,965	26,845

Note: Prior to FY 2014, educators were issued certificates. An educator licensure system began in FY 2014, at which time all certificates were converted to licenses.

### Educator Licenses Issued by Type

<b>Licenses</b>	<b>2012-13</b>	<b>2013-14</b>	<b>2014-15</b>	<b>2015-16</b>	<b>2016-17</b>
Professional Educator	n/a	10,392	7,447	7,667	7,116
Professional Educator with Stipulations	n/a	104,525	1,167	2,700	1,548
Substitute	<u>n/a</u>	<u>7,855</u>	<u>10,111</u>	<u>10,074</u>	<u>9,972</u>
Total	n/a	123,312	18,725	20,441	18,636

Note: Prior to FY 2014, educators were issued certificates. An educator licensure system began in FY 2014, at which time all certificates were converted to licenses.

### Educator Endorsements Issued By Type (105 ILCS 5/2-3.11)

<b>Endorsements</b>	<b>2012-13</b>	<b>2013-14</b>	<b>2014-15</b>	<b>2015-16</b>	<b>2016-17</b>
Elementary	n/a	1,392	3,283	3,524	3,347
Secondary	n/a	4,499	5,349	2,625	3,564
Early Childhood	n/a	1,208	438	677	599
Special	n/a	7,032	2,682	3,622	2,686
School Service	n/a	1,809	1,225	1,298	1,190
Administrative	n/a	3,984	1,595	1,843	1,126
Transitional Bilingual	n/a	515	444	508	355
Substitute	10,515	7,855	10,111	10,078	9,972
Other	<u>n/a</u>	<u>3,029</u>	<u>6,081</u>	<u>6,435</u>	<u>6,855</u>
Total	n/a	31,323	31,208	30,610	29,694

Notes: Prior to FY 2014, educators were issued certificates. An educator licensure system began in FY 2014, at which time all certificates were converted to licenses.  
2013-14 and 2014-15 data were updated.

**Educator Certification/Licensure Tests Administered by Test Fields**  
(105 ILCS 5/2-3.11d)

<b>Test Field</b>	<b>2012-13</b>	<b>2013-14</b>	<b>2014-15</b>	<b>2015-16</b>	<b>2016-17</b>
Basic Skills: TAP	13,784	11,848	22,081	6,084	1,016
Early Childhood	773	469	662	561	459
Elementary	4,443	2,813	3,138	2,769	2,180
Special Education - all categories	4,853	1,845	3,466	3,308	2,012
Sciences - all disciplines	956	583	549	569	375
Math & Computer Science	813	441	515	467	305
Foreign Languages - all languages	539	301	465	368	270
English, Speech, Media, Reading, EL	2,685	1,379	1,565	1,414	1,642
History & Social Science	1,225	770	782	738	529
Art, Music, Theatre, Dance	708	446	569	428	450
Vocational/Technical - all fields	223	187	298	135	124
Health & Physical Education	942	569	542	486	367
School Service Personnel - all fields	2,067	810	1,265	831	1,198
Administrative - all types	4,305	1,253	947	1,942	1,323
Language Proficiency	1,005	561	949	787	627
Assessment of Professional Teaching	12,094	7,252	7,220	2,038	337
Other	<u>0</u>	<u>0</u>	<u>0</u>	<u>0</u>	<u>321</u>
Total	51,415	31,527	45,013	22,925	13,535

Note: Prior to FY 2014, educators were issued certificates. An educator licensure system began in FY 2014, at which time all certificates were converted to licenses.

**National Board-Certified Teachers  
Certification Earned in Illinois**

<b>Year</b>	<b>Newly Certified</b>	<b>% Change From Prior Year</b>	<b>Cumulative Growth</b>
2016-17	11	-74.4	6,062
2015-16	43	-79	6,051
2014-15	205	-21.5	6,034
2013-14	261	-40.1	6,025
2012-13	436	-5.4	6,100
2011-12	461	-40.2	5,842
2010-11	771	5.3	5,155
2009-10	732	4.1	4,694
2008-09	704	37.8	3,924
2007-08	511	18.6	3,192
2006-07	431	36.8	2,492
2005-06	315	-23.7	1,986
2004-05	413	n/a	1,573
1993-2004	1,240	n/a	1,238

Note: Changes in state funding for the Illinois Candidate Fee Subsidy and changes in the National Board's certification process and timeline have impacted Illinois' numbers of candidates each year.

## Expenditures to National Board-Certified Teachers

Year	Mentoring	Registrations	Annual Stipends	Total
2016-17	\$0	\$1,000,000	\$0	\$1,000,000
2015-16	0	1,000,000	0	1,000,000
2014-15	0	1,000,000	0	1,000,000
2013-14	0	1,000,000	0	1,000,000
2012-13	0	1,000,000	0	1,000,000
2011-12	0	1,000,000	0	1,000,000
2010-11	0	0	2,756,400	2,756,400
2009-10	0	0	5,740,730	5,740,730
2008-09	2,616,000	667,000	8,202,000	11,485,000
2007-08	1,273,500	2,866,960	6,294,000	10,434,460
2006-07	783,000	2,183,500	5,164,109	8,130,609
2005-06	730,000	0	3,874,995	4,604,995
2004-05	530,865	834,135	3,240,000	4,605,000
1993-2004	765,500	3,229,590	4,620,000	8,615,090

Note: Public Act 097-0607 eliminated the annual stipend for Illinois Master Certificate holders effective July 1, 2011.

# SPECIAL EDUCATION SERVICES

## Students with Disabilities Receiving Special Education Services Ages 3-21 Unduplicated Count (105 ILCS 5/2-3.11)

Disability Category	2012-13	2013-14	2014-15	2015-16	2016-17
Autism	19,290	20,506	21,893	23,252	24,503
Cognitive Disability (MR)	18,765	17,773	17,629	17,012	16,341
Deaf-Blind	31	34	32	27	24
Deafness	621	608	606	575	544
Developmental Delay	29,890	31,501	34,287	35,859	36,649
Emotional Disturbance	20,205	19,602	19,668	19,270	18,692
Hearing Impairment	3,238	3,145	3,097	3,091	2,994
Multiple Disabilities	2,423	2,553	2,689	2,735	2,829
Other Health Impairment	29,477	31,246	33,114	34,759	35,685
Orthopedic Impairment	1,657	1,515	1,409	1,312	1,225
Specific Learning Disability	105,338	102,737	103,710	103,606	102,335
Speech/Language	59,649	56,804	54,981	53,486	50,579
Traumatic Brain Injury	733	738	715	699	682
Visual Impairment	<u>1,175</u>	<u>1,125</u>	<u>1,123</u>	<u>1,107</u>	<u>1,086</u>
Total	292,492	289,887	294,953	296,790	294,168

## Students with Disabilities by Gender Ages 3-21 Unduplicated Count (105 ILCS 5/2-3.11)

Gender	2012-13	2013-14	2014-15	2015-16	2016-17
Male	196,044	194,020	197,366	198,143	196,017
Female	<u>96,448</u>	<u>95,867</u>	<u>97,587</u>	<u>98,647</u>	<u>98,151</u>
Total	292,492	289,887	294,953	296,790	294,168

**Students with Disabilities by Race/Ethnic Group**  
**Ages 3-21 Unduplicated Count**  
(105 ILCS 5/2-3.11)

<b>Race/Ethnicity Groups</b>	<b>2012-13</b>	<b>2013-14</b>	<b>2014-15</b>	<b>2015-16</b>	<b>2016-17</b>
American Indian or Alaska Native	1,227	1,461	1,628	1,554	1,109
Asian	6,180	6,470	6,621	6,857	7,162
Black or African American	60,607	59,548	61,401	61,485	59,365
Hispanic or Latino	60,939	61,292	64,128	65,965	73,668
Native Hawaiian or Other Pacific Islander	362	387	443	390	258
Two or More Races	8,600	9,036	9,665	10,269	10,676
White	<u>154,577</u>	<u>151,693</u>	<u>151,067</u>	<u>150,270</u>	<u>141,930</u>
Total	292,492	289,887	294,953	296,790	294,168

**Students with Disabilities by Age**  
**Unduplicated Count**  
(105 ILCS 5/2-3.11)

<b>Age</b>	<b>2012-13</b>	<b>2013-14</b>	<b>2014-15</b>	<b>2015-16</b>	<b>2016-17</b>
3	9,171	9,122	9,166	9,575	8,929
4	12,982	12,933	12,967	13,076	13,113
5	15,365	15,323	15,612	15,228	15,225
6	17,117	17,037	17,155	16,651	16,664
7	18,187	18,556	18,832	18,817	18,689
8	19,847	19,638	20,240	20,727	20,233
9	20,684	20,784	21,034	21,415	21,565
10	20,697	20,797	21,476	21,542	21,544
11	21,008	20,304	20,987	21,660	21,251
12	20,873	20,572	20,681	21,077	21,335
13	20,744	20,526	20,814	20,802	20,825
14	20,542	19,973	20,663	20,725	20,324
15	20,140	20,204	20,287	20,659	20,383
16	19,759	19,743	20,184	19,905	20,060
17	18,824	18,127	18,757	18,896	18,443
18	10,381	9,918	9,632	9,634	9,415
19	3,175	3,269	3,207	3,120	2,945
20	1,784	1,774	1,902	1,874	1,824
21	<u>1,212</u>	<u>1,287</u>	<u>1,357</u>	<u>1,407</u>	<u>1,401</u>
Total	292,492	289,887	294,953	296,790	294,168

**Students with Disabilities Exiting School**  
**Ages 14-21 Unduplicated Count**  
(105 ILCS 5/2-3.11)

<b>Reason for Exiting School</b>	<b>2012-13</b>	<b>2013-14</b>	<b>2014-15</b>	<b>2015-16</b>	<b>2016-17</b>
Certificate of Completion	164	175	177	202	814
Died	74	61	76	76	84
Dropped Out of School	2,773	2,883	3,570	2,872	2,650
High School Diploma	13,686	14,392	13,708	13,484	11,364
Moved, Continuing School	6,212	6,056	8,453	8,747	7,358
Reached Maximum Age	503	530	657	655	567
Returned to Regular Education	<u>2,642</u>	<u>2,497</u>	<u>2,360</u>	<u>2,334</u>	<u>3,012</u>
Total	26,054	26,594	29,001	28,370	25,849

Note: 2011-12 data updated.

**Students with Disabilities by Primary Language**  
**Ages 3-21 Unduplicated Count**  
(105 ILCS 5/2-3.11)

<b>Primary Language</b>	<b>2012-13</b>	<b>2013-14</b>	<b>2014-15</b>	<b>2015-16</b>	<b>2016-17</b>
American Sign Language	45	36	38	37	110
Arabic	536	578	648	730	2,005
Assyrian	92	93	101	124	294
Cambodian	26	26	27	28	64
Cantonese (Chinese)	168	171	175	184	260
Croatian	9	8	10	8	21
English	260,326	256,179	258,359	257,986	228,274
French	50	68	68	73	221
German	14	21	18	23	69
Greek	60	56	72	74	241
Gujarati	129	139	141	146	368
Hindi	44	50	60	75	242
Hindustani	0	0	0	0	0
Italian	44	35	37	48	164
Japanese	34	31	35	43	81
Kashmiri	0	0	0	0	0
Korean	70	77	96	105	250
Lao	15	14	13	19	80
Lithuanian	34	32	33	42	123
Mandarin (Chinese)	63	80	100	114	307
Others	891	1,034	1,139	1,294	3,178
Pilipino	194	195	226	257	798
Polish	768	793	846	941	1,969
Romanian	53	64	80	93	188
Russian	99	122	145	167	409
Spanish	28,258	29,479	31,959	33,592	53,098
Urdu	316	346	355	403	988
Vietnamese	<u>154</u>	<u>160</u>	<u>172</u>	<u>184</u>	<u>366</u>
Total	292,492	289,887	294,953	296,790	294,168



**Students with Disabilities Receiving Related and Other  
Special Education Services  
Ages 3-21 Duplicated Count  
(105 ILCS 5/2-3.11)**

<b>Related and Other Services</b>	<b>2012-13</b>	<b>2013-14</b>	<b>2014-15</b>	<b>2015-16</b>	<b>2016-17</b>
Acquisition of Daily Living Skills	807	950	899	866	842
Adapted Driver Education	9	9	5	10	25
Adapted Physical Education	6,871	6,690	6,628	6,453	6,511
Aide - Class	48,934	46,542	46,086	44,227	43,556
Aide - Individual Student	14,735	15,033	16,379	16,724	17,431
Art Therapy	243	256	248	186	168
Assistive Device	18,700	16,528	17,289	15,952	15,255
Audiology	3,325	3,275	3,585	3,542	3,271
Behavioral Intervention Plan	18,981	17,623	17,967	17,334	17,488
Braillist/Reader	114	93	101	92	81
Career and Technical Education	1,546	1,385	1,268	1,268	1,234
Competitive Employment	190	200	132	149	130
Counseling Services	12,208	12,289	12,630	13,291	13,944
Consultant Services	2,402	2,178	2,004	2,066	1,910
Interagency Linkages	724	730	723	780	683
Interpreter Services	1,066	1,001	973	907	824
Music Therapy	452	368	380	262	391
Occupational Therapy	44,949	46,126	48,830	51,059	52,235
Orientation and Mobility	795	783	797	772	764
Other Related Services	3,873	3,755	3,631	3,671	3,337
Outdoor Education	67	60	25	33	44
Parent Counseling	324	310	272	226	254
Psychiatric Services	536	578	524	463	389
Physical Therapy	13,173	13,015	13,203	13,267	13,324
Psychological Services	3,273	3,251	3,200	3,190	2,930
Recreation	113	120	87	68	82
School Health Services	13,877	14,267	15,580	15,931	16,206
Social Work Services	75,974	78,007	81,830	83,047	84,870
Speech/Language Services	79,857	83,193	87,778	90,162	92,437
Students reported with no related services	106,402	105,658	105,585	105,045	103,781
Supported Employment	339	366	393	288	374
Supports for Reclassification to Post-Sec. Ed. Reclassification/STEP by Div of Rehab Services	21,695	21,736	23,533	22,987	22,366
Transportation (Special)	61,600	61,856	63,882	63,650	63,209
Travel Training	121	189	159	150	122

Note: This chart states the number of related and other services reported for eligible students by school districts. One student could be reported as receiving up to eight services.

**Educational Placement of Children with Disabilities**  
**Ages 3-5 Unduplicated Count**  
(105 ILCS 5/2-3.11)

<b>Educational Environment</b>	<b>2012-13</b>	<b>2013-14</b>	<b>2014-15</b>	<b>2015-16</b>	<b>2016-17</b>
Early Childhood Program: At least 80% of time	n/a	n/a	n/a	n/a	9
Early Childhood Program: 40% - 79% of time	n/a	n/a	n/a	n/a	1
Early Childhood Program: less than 40% of time	n/a	n/a	n/a	n/a	3
Regular Early Childhood Program: At least 10 hours per week and receiving the majority of Spec. Ed. and related services in the regular Early Childhood Program	11,474	11,793	12,773	13,555	13,999
Regular Early Childhood Program: At least 10 hours per week and receiving the majority of hours of Spec. Ed. and related services in some other location	8,303	8,892	8,555	8,297	8,439
Regular Early Childhood Program: Less than 10 hours per week and receiving the majority of hours of Spec. Ed. and related services in the regular Early Childhood Program	837	820	865	831	901
Regular Early Childhood Program: Less than 10 hours per week and receiving the majority of hours of Spec. Ed. and related services in some other location	1,973	1,454	1,442	1,409	1,281
Separate Class	10,169	9,840	10,155	9,943	9,325
Separate School	1,100	1,080	692	728	632
Residential Facility	3	8	13	15	14
Home	96	92	86	93	102
Service Provider Location	<u>3,563</u>	<u>3,399</u>	<u>3,164</u>	<u>3,008</u>	<u>2,561</u>
Total Ages 3-5	37,518	37,378	37,745	37,879	37,267

**Educational Placement of Children with Disabilities  
Ages 6-21 Unduplicated Count  
(105 ILCS 5/2-3.11)**

<b>Educational Environment</b>	<b>2012-13</b>	<b>2013-14</b>	<b>2014-15</b>	<b>2015-16</b>	<b>2016-17</b>
Inside Regular Class 80% or more of day	134,381	133,910	135,721	136,311	134,901
Inside Regular Class 40-79% of day	65,831	65,493	67,243	67,881	67,932
Inside Regular Class less than 40% of day	34,388	33,255	34,044	34,415	34,530
Separate School	14,695	14,375	14,641	14,615	14,738
Residential Facility	1,187	1,221	1,172	1,027	888
Homebound/Hospital	394	405	424	405	384
Correctional Facilities/ Detention Programs	238	233	218	167	84
Parentally Placed in Private Schools	<u>3,860</u>	<u>3,617</u>	<u>3,745</u>	<u>4,090</u>	<u>3,442</u>
<b>Total Ages 6-21</b>	<b>254,974</b>	<b>252,509</b>	<b>257,208</b>	<b>258,911</b>	<b>256,899</b>

**Teachers Employed to Provide Special Education Services  
Full-Time Equivalents (FTE)  
(105 ILCS 5/2-3.11)**

	<b>2012-13</b>	<b>2013-14</b>	<b>2014-15</b>	<b>2015-16</b>	<b>2016-17</b>
Teachers for Ages 3-5 (Highly Qualified)	1,555.6	1,526.4	1,402.6	1,346.9	1,342.8
Teachers for Ages 3-5 (Not Highly Qualified)	3.5	18.9	9.4	6.3	6.6
Teachers for Ages 6-21 (Highly Qualified)	22,223.5	20,810.0	21,170.8	21,630.0	18,059.0
Teachers for Ages 6-21 (Not Highly Qualified)	<u>31.0</u>	<u>1,233.0</u>	<u>288.0</u>	<u>344.7</u>	<u>210.9</u>
<b>Total Special Education Teachers</b>	<b>23,813.7</b>	<b>23,588.3</b>	<b>22,870.8</b>	<b>23,327.9</b>	<b>19,619.2</b>

Note: 2011-12 data updated.

**Paraprofessionals Employed to Provide Special Education Services  
Full-Time Equivalents (FTE)  
(105 ILCS 5/2-3.11)**

	<b>2012-13</b>	<b>2013-14</b>	<b>2014-15</b>	<b>2015-16</b>	<b>2016-17</b>
Paraprofessionals for Ages 3-5 (Highly Qualified)	3,652.4	3,659.0	5,044.9	5,351.8	4,720.8
Paraprofessionals for Ages 3-5 (Not Highly Qualified)	0.0	0.0	678.8	566.8	519.7
Paraprofessionals for Ages 6-21 (Highly Qualified)	35,206.7	32,655.9	23,449.6	23,986.3	23,728.3
Paraprofessionals for Ages 6-21 (Not Highly Qualified)	<u>0.0</u>	<u>0.0</u>	<u>4,518.8</u>	<u>3,565.6</u>	<u>3,730.8</u>
Total Special Education Paraprofessionals	38,859.1	36,314.9	33,692.1	33,470.5	32,699.6

**Special Education and Related Services Personnel  
Full-Time Equivalents (FTE)  
(105 ILCS 5/2-3.11)**

	<b>2012-13</b>	<b>2013-14</b>	<b>2014-15</b>	<b>2015-16</b>	<b>2016-17</b>
Audiologists	34.5	34.8	34.9	30.8	31.6
Counselors & Rehabilitation Counselors	637.1	780.6	972.0	973.9	374.8
Interpreters	230.5	196.1	223.8	213.9	202.7
Medical/Nursing Service Staff	685.9	630.6	571.7	548.0	413.4
Occupational Therapists	982.2	1,007.1	996.3	955.6	894.2
Orientation & Mobility Specialists	29.3	23.4	22.0	20.7	19.1
Physical Education Teachers/ Therapeutic Recreation Specialists	212.2	214.2	217.8	215.6	206.3
Physical Therapists	365.5	372.1	374.4	331.0	308.3
Psychologists	2,157.7	2,104.1	2,172.5	2,128.6	1,900.6
Social Workers	3,394.6	3,251.1	3,287.5	3,202.4	2,911.3
Speech-Language Pathologists	<u>3,852.3</u>	<u>3,742.5</u>	<u>3,899.4</u>	<u>3,957.8</u>	<u>3,635.8</u>
Total Related Services Personnel	12,581.7	12,356.5	12,772.1	12,578.3	10,898.1

Note: 2011-12 data updated.

**Mandated Categorical Grants Rate Analysis**  
(105 ILCS 5/2-3.104)

<b>Program</b>	<b>Reimbursement Rate (amount)</b>	<b>School Code Reference</b>	<b>Last Rate Change to School Code</b>
Illinois Free Lunch/ Breakfast	\$0.15 per meal	105 ILCS 125	PA76-875 Effective August 1969
Regular Ed. - Orphanage	1.2 weighted per capita multiplied by reported ADA. Demonstrated actual costs above weighted formula are reimbursed to 100%. Separate summer claim reimbursed at actual cost.	105 ILCS 5/18-3	PA95-0793 Effective August 2009
Special Ed. - Funding for Children Requiring Sp. Ed.	Funds distributed at 85% based on ADA and 15% on poverty as used in the most recent GSA claim for each district.	105 ILCS 5/14-7.02(b)	PA95-0705 Effective January 2008
Special Ed. - Orphanage	Actual cost for education and transportation	105 ILCS 5/14-7.03	PA79-797 Effective July 1973
Special Ed. - Personnel Reimbursement	\$9,000 per certified full-time worker; \$3,500 per noncertified worker.	105 ILCS 5/14-13.01(c)	PA95-707 Effective January 2008  PA 100-0465 Repealed August 2017
Special Ed. - Private Tuition	Actual tuition cost paid less 2 district per capita tuition amounts.	105 ILCS 5/14-7.02	PA80-1405 Effective August 1978
Special Ed. - Summer School	Weighted ADA multiplied by GSA amount per ADA.	105 ILCS 5/18-4.3	PA79-1350 Effective August 1976  PA 100-0465 Repealed August 2017
Special Ed. - Transportation	80% of allowable cost	105 ILCS 5/14-13.01(b)	Laws of 1965 Effective July 1965
Vocational Ed. Transportation	80% of allowable cost	105 ILCS 5/29-5	Laws of 1961 Effective March 1965
Regular Ed. Transportation	Actual costs less EAV qualifying amount for eligible students (min \$16 per student).	105 ILCS 5/29-5	Laws of 1961 Effective March 1965

Notes:

- ADA: Average Daily Attendance
- GSA: General State Aid
- EAV: Equalized Assessed Valuation

## Teachers' Retirement Systems

The purpose of these funds is to pay the statutorily required state share of the actuarial liability of the Teachers' Retirement System, including the Teachers' Retirement Insurance Program, and to subsidize the Chicago Teachers' Pension Fund (Public Act 88-593).

These funds are appropriated directly to the Teachers' Retirement System and the Chicago Teachers' Pension Fund. The following represent historical appropriation amounts as shown in the Illinois State Budget Books:

Fiscal Year	Non-Chicago System*	Chicago System	Total Appropriations	Pension Fund
2017	\$4,096,286,351	\$12,186,000	\$4,108,472,351	\$12,186,000
2016	3,850,960,455	12,105,000	3,863,065,455	12,105,000
2015	3,514,256,700	62,145,000	3,576,401,700	12,145,000
2014	3,529,008,000	11,903,000	3,540,911,000	11,903,000
2013	2,790,161,000	10,931,000	2,801,092,000	10,931,000
2012	2,494,094,000	10,449,000	2,504,543,000	10,449,000
2011	255,953,000	42,971,400	298,924,400	10,449,000
2010	913,868,667	37,551,400	951,420,067	5,029,000
2009	1,527,263,000	74,844,700	1,602,107,700	9,800,000
2008	1,109,891,000	75,262,700	1,185,153,700	10,218,000
2007	813,853,500	75,286,700	889,140,200	10,242,000

\*Teachers' Retirement Insurance Program (below) included in the above Non-Chicago System totals for the following fiscal years:

2017	\$109,703,000
2016	108,258,261
2015	100,983,000
2014	90,430,000
2013	86,683,000
2012	87,622,000
2011	85,953,000
2010	79,007,000
2009	75,474,000
2008	68,596,000
2007	75,839,000

Note: Appropriations for FY 2007 through FY 2016 revised to reflect Illinois Office of the Comptroller.

Data Source: Illinois Office of the Comptroller

Amounts and percentages may not sum to totals based on rounding



# Illinois State Board of Education

2017 Annual Report

Published by the Office of Communications, January 2018