

# What is the value of CTE to Illinois employers?

*"Around the world, CTE is not a track away from successful adulthood, but rather a path towards it."<sup>1</sup>*

"Career and Technical Education plays a vital role in the preparation of our youth for the workforce. Students in these programs are more likely to be work ready because of the skills and knowledge they have attained from these various courses. Companies in the technical sector hold value in these programs because of smoother transition from secondary education to the workforce."

*– Troy Diess, Training and Development Manager, Morton Industries*

"Students' exposure to careers and the technical skills provide an essential road map as they enter the workplace. Schools are critical to highlighting the pathways along that map."

*– Chris DuBois, Manager, Human Resources, Komatsu America Corporation*

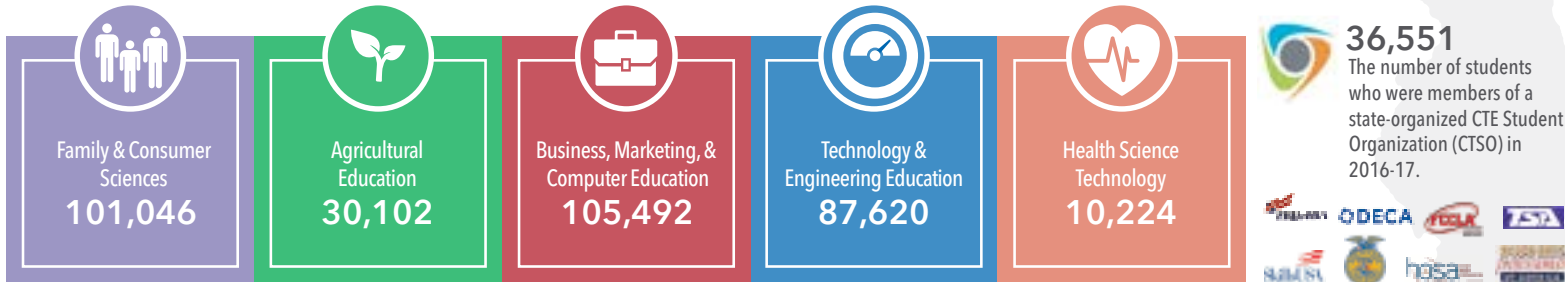
"The Work-Based Learning Program showed me a path and opened doors that I never even knew existed. Without the guidance that this program provided, it would have been difficult for me to establish the relationships that have helped me succeed in the construction industry."

*– Matt Maybanks, Project Manager, River City Construction*

"The number of employment openings surpasses the supply of applicants, especially in healthcare fields. Career and Technical Education experiences at the high school level help attract people into long-term healthcare careers."

*– Don Schultz, RN, BSN, OSF Healthcare System*

## Career & Technical Education (CTE) Student Enrollment 2017<sup>2</sup>



1. Petrilli, M.J. and Zeelander, D. (2016). Forward. In Dougherty, S.M., *Career and Technical Education in High School: Does it Improve Student Outcomes?*. Thomas B. Fordham Institute. (p. 1)

2. ISBE: 2016-17 School Year Enrollment based on enrolling in at least one CTE course. Students may be counted more than once amongst program areas, but never more than once in the same program area. Illinois public secondary enrollment was 615,312. Enrollment data pulled March 2018.

# High School Stackable\* Credentials

 Family & Consumer Sciences	 Agricultural Education	 Business, Marketing, & Computer Education	 Technology & Engineering Education	 Health Science Technology
ECE Credential Level 1	Crop Advisor	Microsoft Office Specialist (MOS)	NIMS Machining Level I	Certified Nurse Assistant (CNA)
ServSafe Sanitation Manager (FSSM)	Landscape / Sports Field Technician	A+ Certified IT Professional	ASE Student Certification	Pharmacy Technician (CPHT)
ProStart National Certificate of Achievement	Animal Quality Assurance	Adobe Certified Associate (ACA)	A+ Certified IT Professional	CPR Healthcare Provider
Food Handler	Veterinarian Medical Technician	Cisco Certification	OSHA Safety	EMS First Responder

A 2015-16 survey conducted by the Illinois Education for Employment Systems, resulted in the top four credentials offered by Illinois CTE programs.

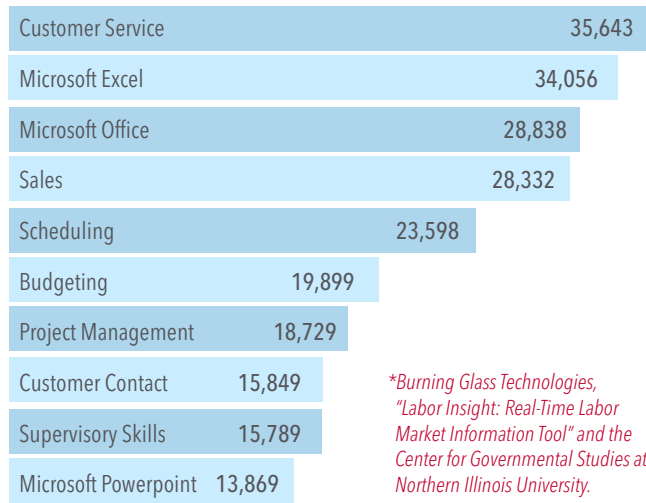
\*A stackable credential – certificate, license, digital badge, apprenticeship, etc. – increases one’s “currency” by creating more direct paths to better jobs and higher wages.



Illinois State Board of Education | 100 North First Street | Springfield, IL 62777-0001 | www.isbe.net  
 James T. Meeks, Chairman | Tony Smith, Ph.D., State Superintendent of Education  
 An Equal Opportunity/Affirmative Action Employer Printed by the Authority of the State of Illinois  
 June 2018 30,000 printed | 18-3235-00-09-010-5050-51

TOP  
10

Illinois Specialized Skills in Demand\*  
 By Online Job Listings: 2017 April–June



\*Burning Glass Technologies, "Labor Insight: Real-Time Labor Market Information Tool" and the Center for Governmental Studies at Northern Illinois University.

"Real-time labor market information is based on analysis of the millions of job listings posted everyday by employers." This data is compiled by bots that scan the internet daily for job postings on job boards, corporate websites, and other locations."



To reprint this infographic with live links to the High School Stackable Credentials in the chart, access the ISBE and/or the ISU website.