



ILLINOIS SCIENCE ASSESSMENT

Import Wizard Webinar
February 2019



Webinar Tips

- **Tips for Listening**
 - Computer speakers
 - Headset connected to a computer
 - Telephone
- **Tips for Speaking**
 - Make sure you have a microphone plugged in or the computer you are using has a microphone before raising your hand.
 - Make sure all audio settings in the computer are un-muted and speakers are turned down before talking.
- **Question & Answer**
 - Question & Answer Session will be held at the end of the Webinar.
 - Raise your hand to ask a question.
 - All text messages are logged.
 - Text questions will be posted in a Q & A document after the Webinar.
 - If you are using a telephone, the audio pin number must be typed in correctly before you can talk.
- **Troubleshooting**
 - If you are disconnected from the Webinar at any time, you can click the link that was provided to you in your email or you can re-register for the Webinar to gain access.
 - If you are listening via telephone and close out of the Webinar on your computer, you will be disconnected.



Agenda

- Welcome and Introductions
- Introduction to Assessment Delivery System (ADS)
- User Accounts
- ISA Import Wizard – data flow chart
- Initial Rostering of Students
- ISA Resources – <https://www.isbe.net/Pages/Illinois-Science-Assessment.aspx>
- Next Steps: Districts
- Questions & Answers
- ISBE Contact Information
- **Systems User Guide – detailed walkthrough (stand alone presentation)**



Welcome / Introductions

Presenters

- **Dan Brown**
Division Supervisor, Assessment and Accountability
- **Katrina Kasten**
Project Lead, Breakthrough Technologies

Contributing Members

- **Laura Quimby**
Division Supervisor, Assessment and Accountability
- **Joshua Pierce**
Software Developer, Information Technology
- **Andy West**
Software Developer, Information Technology
- **Naga Mummadi**
Database Architect, Information Technology



Systems Used for ISA

- Information from the User Guide
 - Assessment Delivery System (ADS)
 - ISBE Teach – test management platform
 - ISBE Learn – test driver (student interaction) platform
- ISBE Student Information System (SIS) – Source of student data – as always, keep SIS updated!
- ISBE ISA Import Wizard – User interface used for ISA to transmit student information from SIS to ISBE Teach



User Accounts

- ISBE loaded initial user accounts
 - When? – 2/14/2019
 - Who? – ISBE used district and school level EPS data for each RCDTS code:
 - Primary Contact
 - ISA Coordinator
 - If school districts entered ISA Coordinator data, then the result will be two user accounts for each RCDTS code in IWAS.
 - Why? –
 - EPS has the official administrative contact person and ISA test coordinator for each organization. ISBE purges the ISBE-Teach users accounts each year as part of system security procedures.



Getting Started

<https://teach-isa.ileducates.org/user/login?nextDestination=dashboard>

ISBE | ISBE TEACH ⌵

Help

Log In

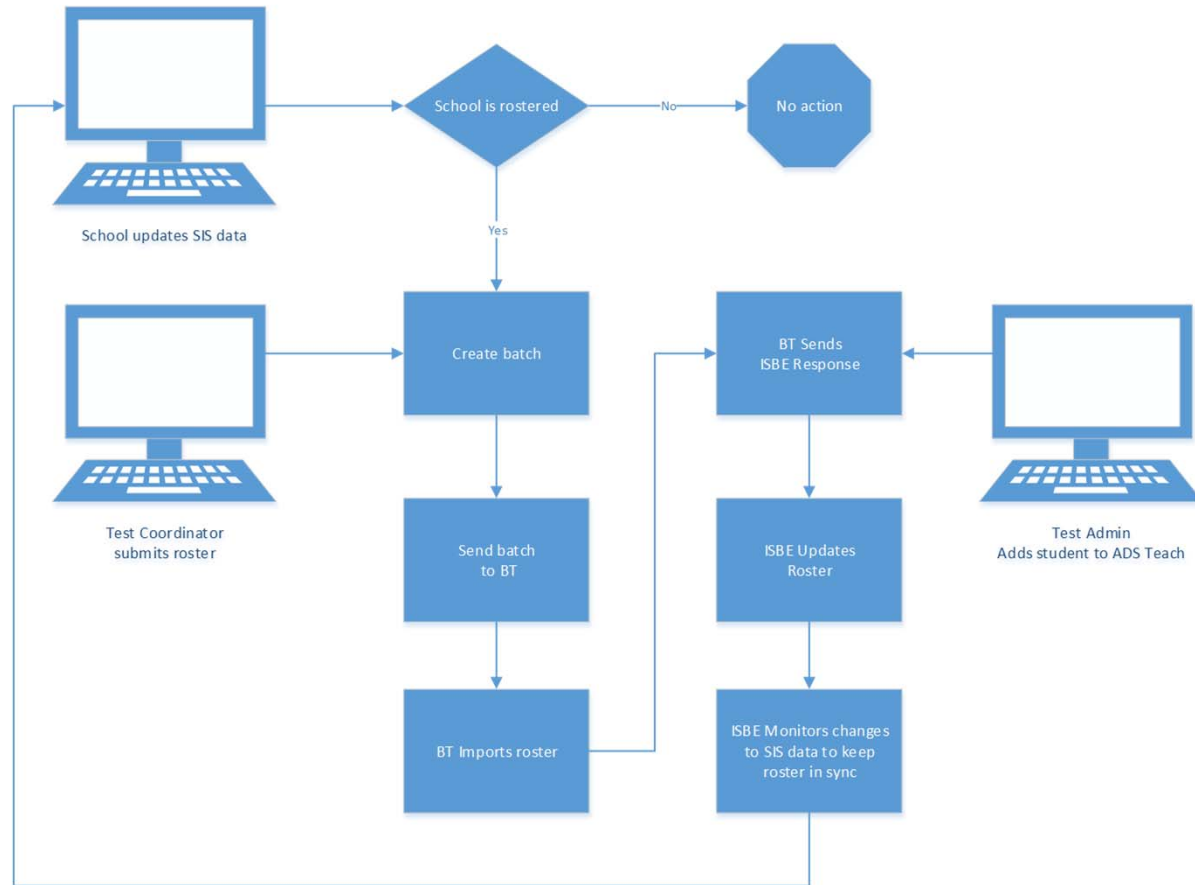
Log in Request new password

E-mail or username *

Password *

Log in

ISA Flow Chart





Initial Rostering

- ISBE performed a statewide sweep to roster students for ISA
- This resulted in students being loaded with default Test Sections and test locations (testing schools)
- Why?
 - The initial student load saves processing time and allows us to load student data and then assign tests.
 - Next, we started the Delta Process (automatically exiting and enrolling triggered by actions taken in SIS)
 - Completes the work for district **if you do not want to customize your sections and test locations**



DTC and STC Resources

10

- Posted on the ISA Website: <https://www.isbe.net/Pages/Illinois-Science-Assessment.aspx>
- Resources
 - Systems User Guide – provides help with all ISA systems used during testing
 - ISA 101 – basics about the ISA
 - Professional Testing Practices for Educators – specifics about ISA administration
 - Illinois Science Assessment Accommodations & Accessibility Features – guidance on ISA accommodations and accessibility features for students with IEP, 504, or EL plans



White List

https://www.isbe.net/Documents/ISA_ADS_Whitelist.pdf

2019 ILLINOIS SCIENCE ASSESSMENT

- *.ileducates.org
- https://isbe-isa-prod-tap.s3.amazonaws.com
- https://fonts.googleapis.com
- https://fonts.gstatic.com
- https://sec2.isbe.net
- https://js-agent.newrelic.com
- https://bam.nr-data.net
- d12absk6swphg7.cloudfront.net
- d2xk9byr7zaf37.cloudfront.net
- https://breaktechisbtoolbar.speechstream.net/
- https://breaktechisbecache.speechstream.net/
- https://breaktechisbeservices.speechstream.net/
- http://breaktechisbeservicesbackup.speechstream.net/
- https://speechstreamtoolbar.speechstream.net/
- https://speechstreamtoolbar-webservices.texthelp.com/
- https://speechstreamservicesbackup.speechstream.net/
- themes.googleusercontent.com
- www.google-analytics.com



Next Steps - Districts

- Continue to Enroll and Exit students in SIS.
- If desired, customize your class rosters in ISBE Teach.
- Create additional user accounts as needed.



Q&A

- Q&A before transitioning to the detailed Systems User Guide walkthrough



ISBE Contact Information

14

- **ISBE Help**
 - [Science Web Page](#)
 - 1-866-317-6034 – basic questions
 - Dan Brown – policy and higher level process questions
 - dabrown@isbe.net