



# ILLINOIS SCIENCE ASSESSMENT

Import Wizard Webinar  
February 2019

- **Tips for Listening**
  - Computer speakers
  - Headset connected to a computer
  - Telephone
- **Tips for Speaking**
  - Make sure you have a microphone plugged in or the computer you are using has a microphone before raising your hand.
  - Make sure all audio settings in the computer are un-muted and speakers are turned down before talking.
- **Question & Answer**
  - Question & Answer Session will be held at the end of the Webinar.
  - Raise your hand to ask a question.
  - All text messages are logged.
  - Text questions will be posted in a Q & A document after the Webinar.
  - If you are using a telephone, the audio pin number must be typed in correctly before you can talk.
- **Troubleshooting**
  - If you are disconnected from the Webinar at any time, you can click the link that was provided to you in your email or you can re-register for the Webinar to gain access.
  - If you are listening via telephone and close out of the Webinar on your computer, you will be disconnected.

- Welcome and Introductions
- Introduction to Assessment Delivery System (ADS)
- User Accounts
- ISA Import Wizard – data flow chart
- Initial Rostering of Students
- ISA Resources – <https://www.isbe.net/Pages/Illinois-Science-Assessment.aspx>
- Next Steps: Districts
- Questions & Answers
- ISBE Contact Information
- **Systems User Guide – detailed walkthrough (stand alone presentation)**

## Presenters

- **Dan Brown**  
*Division Supervisor, Assessment and Accountability*
- **Katrina Kasten**  
*Project Lead, Breakthrough Technologies*

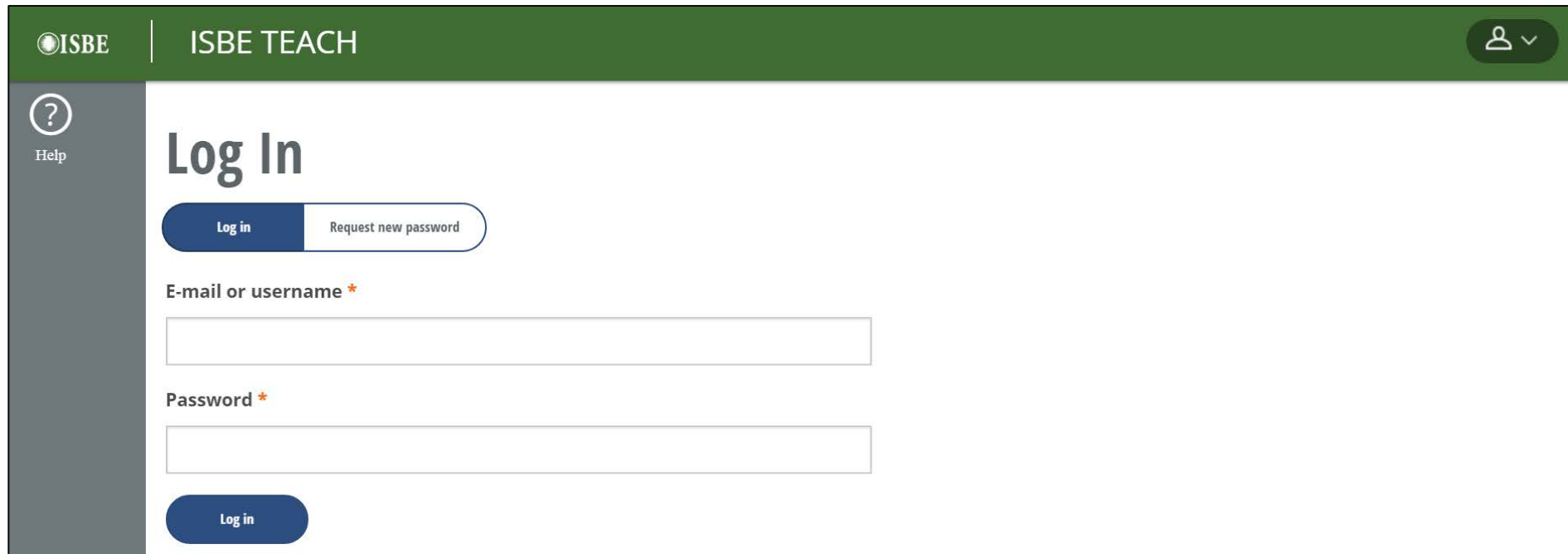
## Contributing Members


- **Laura Quimby**  
*Division Supervisor, Assessment and Accountability*
- **Joshua Pierce**  
*Software Developer, Information Technology*
- **Andy West**  
*Software Developer, Information Technology*
- **Naga Mummadi**  
*Database Architect, Information Technology*

- Information from the User Guide
  - Assessment Delivery System (ADS)
    - ISBE Teach – test management platform
    - ISBE Learn – test driver (student interaction) platform
- ISBE Student Information System (SIS) – Source of student data – as always, keep SIS updated!
- ISBE ISA Import Wizard – User interface used for ISA to transmit student information from SIS to ISBE Teach

- ISBE loaded initial user accounts
  - When? – 2/14/2019
  - Who? – ISBE used district and school level EPS data for each RCDTS code:
    - Primary Contact
    - ISA Coordinator
    - If school districts entered ISA Coordinator data, then the result will be two user accounts for each RCDTS code in IWAS.
  - Why? –
    - EPS has the official administrative contact person and ISA test coordinator for each organization. ISBE purges the ISBE-Teach users accounts each year as part of system security procedures.

<https://teach-isa.ileducates.org/user/login?nextDestination=dashboard>



ISBE | ISBE TEACH 

 Help

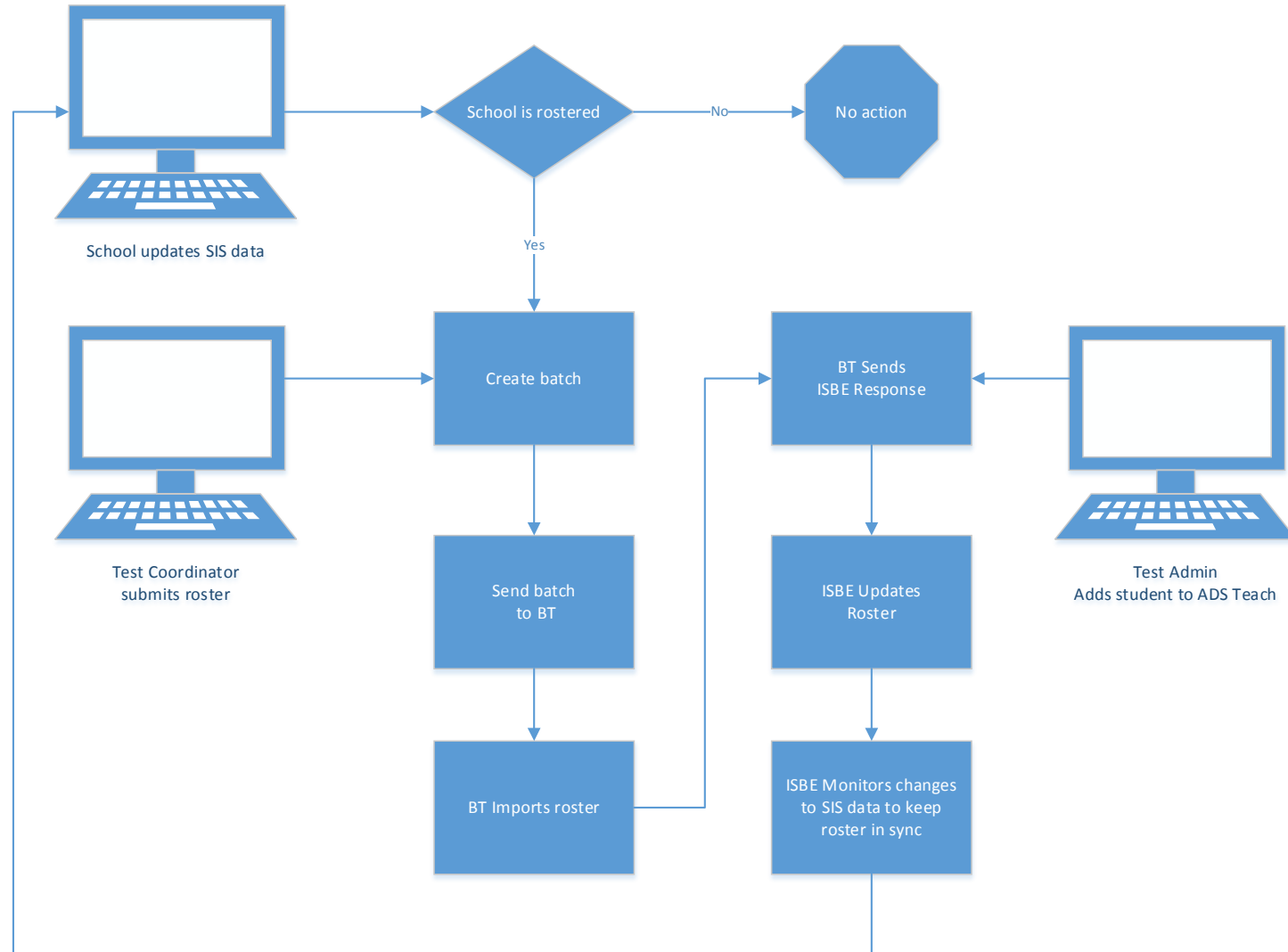
## Log In

**Log in** Request new password

E-mail or username \*

Password \*

**Log in**





- ISBE performed a statewide sweep to roster students for ISA
- This resulted in students being loaded with default Test Sections and test locations (testing schools)
- Why?
  - The initial student load saves processing time and allows us to load student data and then assign tests.
  - Next, we started the Delta Process (automatically exiting and enrolling triggered by actions taken in SIS)
  - Completes the work for district **if you do not want to customize your sections and test locations**

- Posted on the ISA Website: <https://www.isbe.net/Pages/Illinois-Science-Assessment.aspx>
- Resources
  - Systems User Guide – provides help with all ISA systems used during testing
  - ISA 101 – basics about the ISA
  - Professional Testing Practices for Educators – specifics about ISA administration
  - Illinois Science Assessment Accommodations & Accessibility Features – guidance on ISA accommodations and accessibility features for students with IEP, 504, or EL plans

[https://www.isbe.net/Documents/ISA\\_ADS\\_Whitelist.pdf](https://www.isbe.net/Documents/ISA_ADS_Whitelist.pdf)

## 2019 ILLINOIS SCIENCE ASSESSMENT

- \*.ileducates.org
- https://isbe-isa-prod-tap.s3.amazonaws.com
- https://fonts.googleapis.com
- https://fonts.gstatic.com
- https://sec2.isbe.net
- https://js-agent.newrelic.com
- https://bam.nr-data.net
- d12absk6swphg7.cloudfront.net
- d2xk9byr7zaf37.cloudfront.net
- https://breaktechisbtoolbar.speechstream.net/
- https://breaktechisbecache.speechstream.net/
- https://breaktechisbeservices.speechstream.net/
- http://breaktechisbeservicesbackup.speechstream.net/
- https://speechstreamtoolbar.speechstream.net/
- https://speechstreamtoolbar-webservices.texthelp.com/
- https://speechstreamservicesbackup.speechstream.net/
- themes.googleusercontent.com
- www.google-analytics.com

- Continue to Enroll and Exit students in SIS.
- If desired, customize your class rosters in ISBE Teach.
- Create additional user accounts as needed.

- Q&A before transitioning to the detailed Systems User Guide walkthrough

- **ISBE Help**
  - [Science Web Page](#)
  - 1-866-317-6034 – basic questions
  - Dan Brown – policy and higher level process questions
    - [dabrown@isbe.net](mailto:dabrown@isbe.net)