



TRANSFORMING TOMORROW TOGETHER

ISBE & SELA's SPECIAL EDUCATION DIRECTORS CONFERENCE

June 10th 12:00 - 4:00pm

&

June 11th 8:00am - 3:00pm

CROWNE PLAZA SPRINGFIELD
3000 S DIRKSEN PKWY, SPRINGFIELD, IL

Contents

Monday Itinerary	2
Tuesday Itinerary	3
Breakout Overview	5-6
Keynote Presentation	7
Breakout Sessions 9:20 - 10:20am	7-9
Breakout Sessions 10:30 - 11:30am	9-11
Breakout Sessions 12:30 - 1:30pm	11-13
Breakout Sessions 1:45 - 2:45pm	14-16
Exhibitors 8:00am - 3:00pm	20

Monday, June 10th

Ballroom

12:15 - 12:30 pm

Intro/Welcome

Dr. Judy Hackett

12:30 - 1:00 pm

I-Star Highlights

Sarah Noelle

1:00 - 1:30 pm

Special Education Funding and IDEA Part B

Andy Krupin

1:30 - 2:00 pm

IDEA Part B Grant Updates and Reminders

Elroy Reed

2:00 - 2:30 pm

Cyclical Monitoring

Leslie Paramo, Dana Jamerson, Paula Powers

2:30 - 3:00 pm

Discipline

William Hrabec

3:00 - 4:00 pm

Tips from the Trenches

Panel of Special Education Directors Discuss and Answer Questions on Hot Topics in the Field of Special Education



Tuesday, June 11th

7:00 - 8:00 am

Registration / Breakfast Buffet

8:00 - 8:15 am

Ballroom

Welcome

Molly Dunne and Julie Jilek

8:15 - 9:15 am

Ballroom

Especially Safe: Ensuring the Safety of
EVERYbody

**Michele Gay, Founder and Executive Director, Safe and
Sound Schools**

9:20 - 10:20 am

Breakout Sessions

10:30 - 11:30 am

Breakout Sessions

11:30 am - 12:30 pm

Ballroom

Lunch

12:30 - 1:30 pm

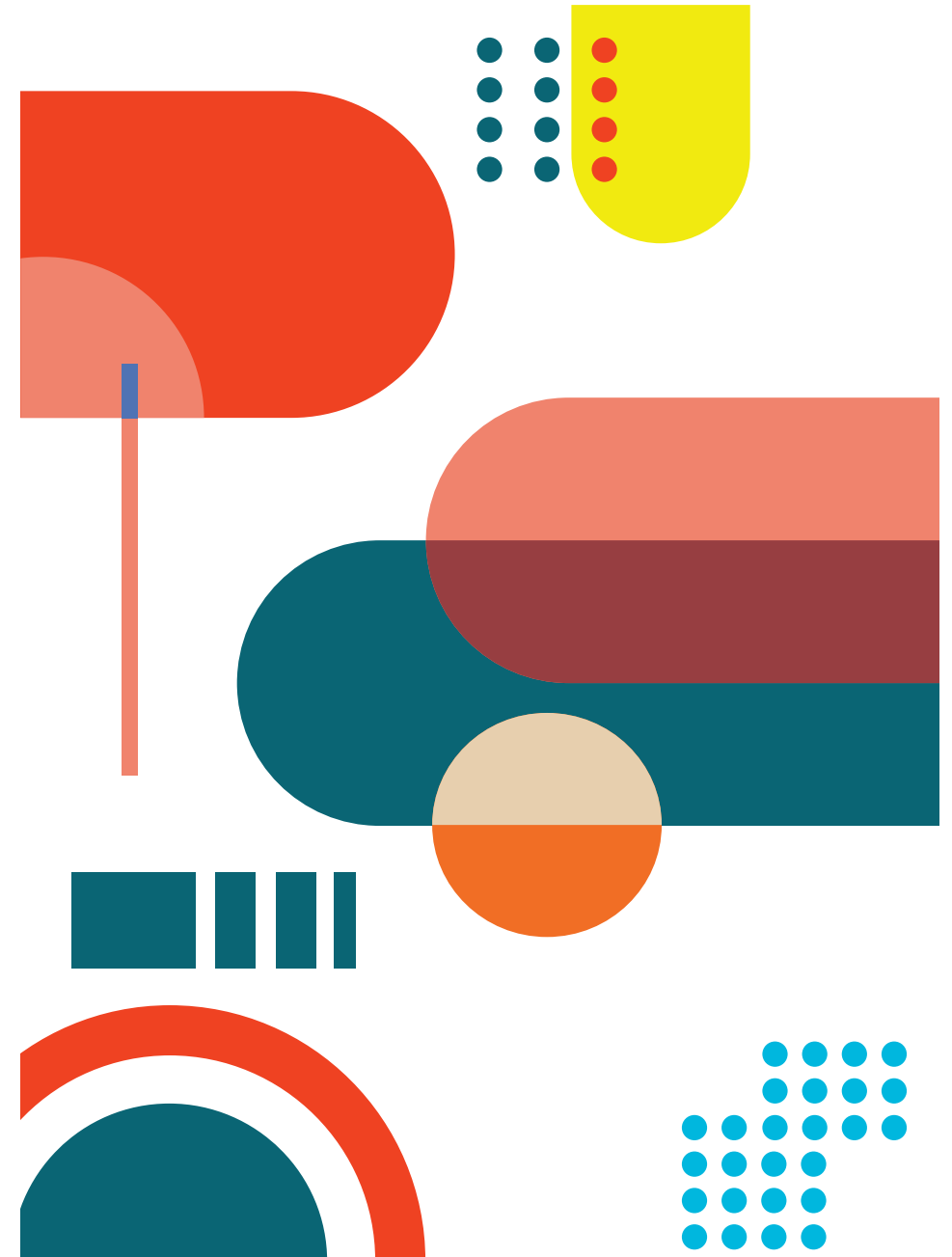
Breakout Sessions

1:45 - 2:45 pm

Breakout Sessions

"A good education is a foundation for a better future"

- Elizabeth Warren



Breakout Session Overview

	Plaza AB	Plaza CD	Plaza E	Plaza F	Plaza G	Plaza H
Breakout Sessions 9:20 - 10:20 am	Session 1 Especially Safe: An Inclusive Approach to Supporting Special Needs for Safety Michele Gay	Session 2 Special Education Data Collection Sarah Noelle	Session 3 FY 2025 State Special Education Funding and IDEA Part B Allocations Andy Krupin	Session 4 Stress/Trauma and the Brain Leslie Vigor	Session 5 Training and Supervising Paraprofessional Job Coaches Stacy Dymond	Session 6 9:20 - 11:30 am Legal Hot Topics William Hrabe Amanda Clay
Breakout Sessions 10:30 - 11:30 am	Session 7 Who qualifies for the DLM-AA1%? Dana Jamerson, Rhonda Marks, Laura Avery	Session 8 ISBE Early Childhood Transition System Kristy Doan	Session 9 Assistive Technology: Your Guide to Dispel the Myths and Find the Facts Samantha Conklin, Peggy Childs	Session 10 Noteworthy Nonpublic Hot Topics Marlee Goldsworthy, Monika Miller	Session 11 Empowering Educators: Transforming Support for Autism and Resources Related to Restraint and Time Out Nikki Michalak, Ann Penicook	
Lunch 11:30 am - 12:30 pm						
Breakout Sessions 12:30 - 1:30 pm	Session 12 Department of Special Education Cyclical Monitoring Dana Jamerson, Lesley Paramo, Paula Powers	Session 13 A Comprehensive Guide to Implementing the ISBE Dyslexia Handbook in Schools and Districts Jessica Rodriguez, Melissa Jones-Bromenshenkel	Session 14 Supporting Families of Students with Disabilities Through Training, Information, and Advocacy Amanda Klemas, Michelle Phillips, Megan Mutti	Session 15 Training Qualified Interpreters for IEP Meetings (TQII) Kiel Christianson	Session 16 Discipline William Hrabe Michael Montgomery	Session 17 12:30 - 2:45 pm Dispute Resolution: State-Sponsored IEP Facilitation/Mediation, Special Education State Written Complaint Due Process Emily Postelmans, Mark Conyer, Andy Eulass
Breakout Sessions 1:45 - 2:45 pm	Session 18 IDEA Updates Elroy Reed, Twylia Bennett, Adenike Sosina	Session 19 District and School Leadership Dr. Shawn Walsh, Kristina Holloway	Session 20 The District EJC Journey to Improved Outcomes for All Students Paula Powers, Dr. William Truesdale	Session 21 Educational Surrogate Parents 101 Laura Fowler, Rocio Casillas		

Keynote Presentation

8:15 - 9:15 am

Ballroom

Especially Safe: Ensuring the Safety of EVERYbody

Description:

Michele Gay shares the deeply personal story, lessons learned, and inspiration behind Safe and Sound Schools' Especially Safe program. Created in honor of her youngest daughter, Josephine Grace Gay, Especially Safe is the legacy of a beautiful girl lost on December 14, 2012 at Sandy Hook School and an indomitable spirit that challenges us all to ensure Safe and Sound Schools for EVERYbody.

Speaker:

Michele Gay - Founder and Executive Director, Safe and Sound Schools

Breakout Sessions

9:20 - 10:20 am

Plaza AB - Session 1

Especially Safe: An Inclusive Approach to Supporting Special Needs for Safety

Description:

Join this session to explore Safe and Sound Schools' newest program, Especially Safe: An Inclusive Approach to School Safety. Developed with expert practitioners from across the disciplines, the program includes resources, tools, and teaching ideas to meet the safety needs of community members with special needs. Participants will be introduced to the Especially Safe Program guides and resources, review key considerations for inclusive safety planning, and explore the TEAMS framework for inclusive safety planning and the Individual Safety Plan (ISP). Additionally, we'll explore key considerations for teaching and training young students and early learners about safety, share practical activities and resources for increasing student empowerment, and best practices for building a positive culture of safety within your school community.

Speaker:

Michele Gay - Founder and Executive Director, Safe and Sound Schools

Plaza CD - Session 2

Special Education Data Collection

Description:

Harrisburg Project will provide guidance on new data elements such as Interpreter Data Collection and Personnel Work Assignments/Error Checking. In addition, they will cover Summer Due Dates and other current events. If time allows, there will be Q and A at the end of the session.

Speaker:

Sarah Noelle - Lead Trainer / Systems Analyst, Harrisburg Project

Plaza E - Session 3

FY 2025 State Special Education Funding and IDEA Part B Allocations

Description:

This session will summarize the funding anticipated to be made available to LEAs for Special Education in State Fiscal Year 2025. I will also cover the IDEA Part B allocation process, which is completed in the Department of Funding and Disbursements.

Speaker:

Andy Krupin - Director of Funding and Disbursements, ISBE

Plaza F - Session 4

Stress/Trauma and the Brain

Description:

This session aims to provide a comprehensive understanding of the Brain Model, illustrating how stress and trauma impact both the brain and daily life. Participants will delve into the intricacies of Emotion Cycles and dysregulation, equipping school staff and students with effective strategies for fostering regulation.

Speaker:

Leslie Vigor - Director of Social Emotional Learning for Area 3 SEL Hub and ROE 1

Plaza G - Session 5
Training and Supervising Paraprofessional Job Coaches

Description:

Paraprofessionals increasingly serve as job coaches at community work-based learning sites. This session will describe the role of job coaches, and the challenges that special educators in Illinois experience related to training and supervising job coaches. Ideas for addressing challenges will be discussed.

Speaker:

Stacy Dymond - Director, Illinois Center for Transition and Work, Professor, Department of Special Education, University of Illinois Urbana-Champaign

Plaza H - Session 6
Legal Hot Topics

9:20 - 11:30 am
(Double Session)

Description:

ISBE Attorney William Hrabe and Principal Consultant Amanda Clay will review special education issues that are faced by school districts across the state. The presentation will identify how/when problems arise, review relevant legal standards, and provide tips for addressing these concerns. Topics will include districts' responsibility when a student is placed in a nonpublic program (approved and non-approved), compensatory education, and updated guidance on residential placements.

Speaker:

William Hrabe - Assistant Legal Counsel, ISBE
Amanda Clay - Principal Consultant, ISBE

Breakout Sessions

10:30 - 11:30 am

Plaza AB - Session 7

Who qualifies for the DLM-AA1%?

Description:

The Every Student Succeeds Act of 2015 (ESSA) modified the provision that students with the most significant cognitive disabilities may participate in the alternate assessment. ESSA places a 1% threshold on the number of students who may participate in DLM-AA. This session will walk districts through the Justification and Action Plan Forms required for districts exceeding the 1% threshold.

Speakers:

Dana Jamerson - Principal Consultant, ISBE
Rhonda Marks - Principal Consultant, ISBE
Laura Avery - Principal Consultant, ISBE

Plaza CD - Session 8

ISBE Early Childhood Transition System

Description:

The Illinois State Board of Education utilizes the Early Childhood Transition System in SIS to make districts aware of currently enrolled early intervention students who may be transitioning to the district. This session will provide general information on the system, generating reports, reporting requirements, and common coding questions.

Speakers:

Kristy Doan - Principal Consultant, ISBE

Plaza E - Session 9

Assistive Technology: Your Guide to Dispel the Myths and Find the Facts

Description:

In January 2024, the Office of Special Education Programs (OSEP) and

Educational Technology (OET) released a dear colleague letter and a user-friendly guidance document outlining facts and myths related to assistive technology (AT). How do these documents impact your work as an educational leader? This session will highlight AT best practices and legal mandates referenced in these documents. Additionally, the alignment between these documents and our current Illinois AT Manual will be shared, demonstrating its comprehensive content to support AT knowledge and use in Illinois.

Speakers:

Samantha Conklin - MS ATP, Assistive Technology Facilitator, Infinitech
Peggy Childs - Executive Vice President, Infinitech

Plaza F - Session 10

Noteworthy Nonpublic Hot Topics

Description:

This presentation will cover a variety of “hot topics” that the ISBE nonpublic team has encountered over the last year. Helpful information and guidance related to each topic will be provided, and is intended for both public school districts and nonpublic special education programs. The goal is that attendees will leave the presentation with a better understanding of common topics and situations related to nonpublic special education programs and how to best navigate them.

Speakers:

Marlee Goldsworthy - Principal Consultant, ISBE
Monika Miller - Principal Consultant, ISBE

Plaza G - Session 11

Empowering Educators: Transforming Support for Autism and Resources Related to Restraint and Time Out

Description:

The Autism Professional Learning and Universal Supports (APLUS) project focuses on providing professional development and resources to educators to enhance their ability to support students with autism spectrum disorder (ASD) through evidence-based practices. The Center for Intensive Behavioral Supports (CIBS) Project aims to deliver specialized training and

resources to school staff to effectively address and manage challenging behaviors in students with significant behavioral needs, ensuring a supportive and inclusive learning environment. Come learn how both initiatives are designed to improve educational outcomes for students with diverse needs by equipping educators with the necessary skills and knowledge. Leave with resources on free professional development and practical strategies to share with your teaching staff.

Speakers:

Nikki Michalak - Statewide Director, Illinois State University
Ann Penicook - Program Administrator, Illinois State University

Breakout Sessions

12:30 - 1:30 pm

Plaza AB - Session 12

Department of Special Education Cyclical Monitoring

Description:

This session will provide an overview on the updated OSEP guidance to ensure all LEAs are comprehensively monitored. ISBE is implementing a cyclical monitoring system in addition to yearly LEA Determinations.

Speakers:

Dana Jamerson - Principal Consultant, ISBE
Lesley Paramo - Principal Consultant, ISBE
Paula Powers - Principal Consultant, ISBE

Plaza CD - Session 13

A Comprehensive Guide to Implementing the ISBE Dyslexia Handbook in Schools and Districts

Description:

Learn to effectively navigate and utilize the ISBE Dyslexia Handbook as a valuable resource in your educational setting. With a targeted focus on implementation strategies, collaborative approaches, and assessment and intervention plans, educators and administrators will gain practical insights to translate knowledge to practice in their buildings and school districts.

Speakers:

Jessica Rodriguez - SLD Support Project

Melissa Jones-Bromenshenkel - SLD Support Project & Eastern Illinois University

Plaza E - Session 14**Supporting Families of Students with Disabilities Through Training, Information, and Advocacy****Description:**

This presentation will provide background information on Illinois' Protection & Advocacy System and Parent and Training Information Centers, which offer various services to support families in obtaining the special education services their children need to be successful in school. The presentation will review relevant, available resources through these organizations.

Speakers:

Amanda Klemas - Senior Attorney, Equip for Equality

Michelle Phillips - Executive Director, Family Resource Center on Disabilities

Megan Mutti - Director, Family Matters

Plaza F - Session 15**Training Qualified Interpreters for IEP Meetings (TQII)****Description:**

The Illinois State Board of Education (ISBE) and a team of experts at the University of Illinois, Urbana-Champaign, are working together to develop a modular online training program for people who would like to be designated as "qualified IEP interpreters." This program is a blend of synchronous and asynchronous online training and testing sessions, consisting of these three (3) modules. This presentation describes the training sessions, including requirements of the relevant laws and ongoing efforts to expand the program to more languages and more trainees.

Speakers:

Kiel Christianson - University of Illinois at Urbana-Champaign

Plaza G - Session 16**Discipline****Description:**

This session will provide participants with a better understanding of student discipline policies, guidance, data reporting requirements, timelines, and resources.

Speaker:

William Hrabe - Assistant Legal Counsel, ISBE

Michael Montgomery - Assistant Legal Counsel, ISBE

Plaza H - Session 17**12:30 - 2:45 pm****Dispute Resolution:****(Double Session)**

**State-Sponsored IEP Facilitation/Mediation
Special Education State Written Complaint
Due Process**

Description:

Conflict can be a natural part of any collaborative effort between schools and families. Effective resolution of conflicts can result in improved systems, relationships, and student outcomes. Learn about the common reasons for conflict and ISBE's systems for IEP facilitation, mediation, complaint investigations, and due process to better determine which system can best support your district during times of conflict.

Speakers:

Emily Postelmans - IEP Facilitation and Mediation Coordinator, Principal Consultant, Department of Special Education Operational Support, ISBE

Mark Conyer - State Complaint Investigator, Principal Consultant, Department of Special Education Operational Support, ISBE

Andy Eulass - Due Process Coordinator, Principal Consultant, Department of Special Education Operational Support, ISBE

Breakout Sessions

1:45 - 2:45 pm

Plaza AB - Session 18 IDEA Updates

Description:

Meet your grant coordinator and hear the updates to the FY25 IDEA Application. Time for Q&A will be allowed.

Speakers:

Elroy Reed - IDEA Grant Coordinator, ISBE

Twylia Bennett - Supervisor Operational Support, ISBE

Adenike Sosina - Fiscal Lead, ISBE

Plaza CD - Session 19 District and School Leadership

Description:

Recruitment and retention of strong school leaders is critical. This session will provide an overview of the work that the Department of District and School Leadership is currently implementing to support educational leaders across Illinois. This session will also highlight the latest initiatives ISBE has put in place to support rural school districts with improving outcomes for students.

Speakers:

Dr. Shawn Walsh - Director of the Department of District and School Leadership, ISBE

Kristina Holloway - Rural School District Support Lead, ISBE

Plaza E - Session 20 The District EJC Journey to Improved Outcomes for All Students

Description:

ISBE is committed to educational equity for all students and provides

the Equity Journey Continuum (EJC) as a tool for districts to view their progress toward the ISBE Strategic Plan goals using district data. Presenters of this session will provide school district administrators and educators information, examples, resources, fact sheets, and tools to support your district in their educational equity journey to improve outcomes for all students.

Speaker:

Paula Powers - Principal Consultant, ISBE

Dr. William Truesdale - Ed.D, Principal Consultant, ISBE

Plaza F - Session 21 Educational Surrogate Parents 101

Description:

This presentation will cover the basics of the Educational Surrogate Parent Program such as: what is an ESP, what is a facility's responsibility when working with an ESP, what are the expectations of an ESP when working with a facility? It will also briefly touch on the difference between what an ESP can do versus the DCFS caseworker.

Speakers:

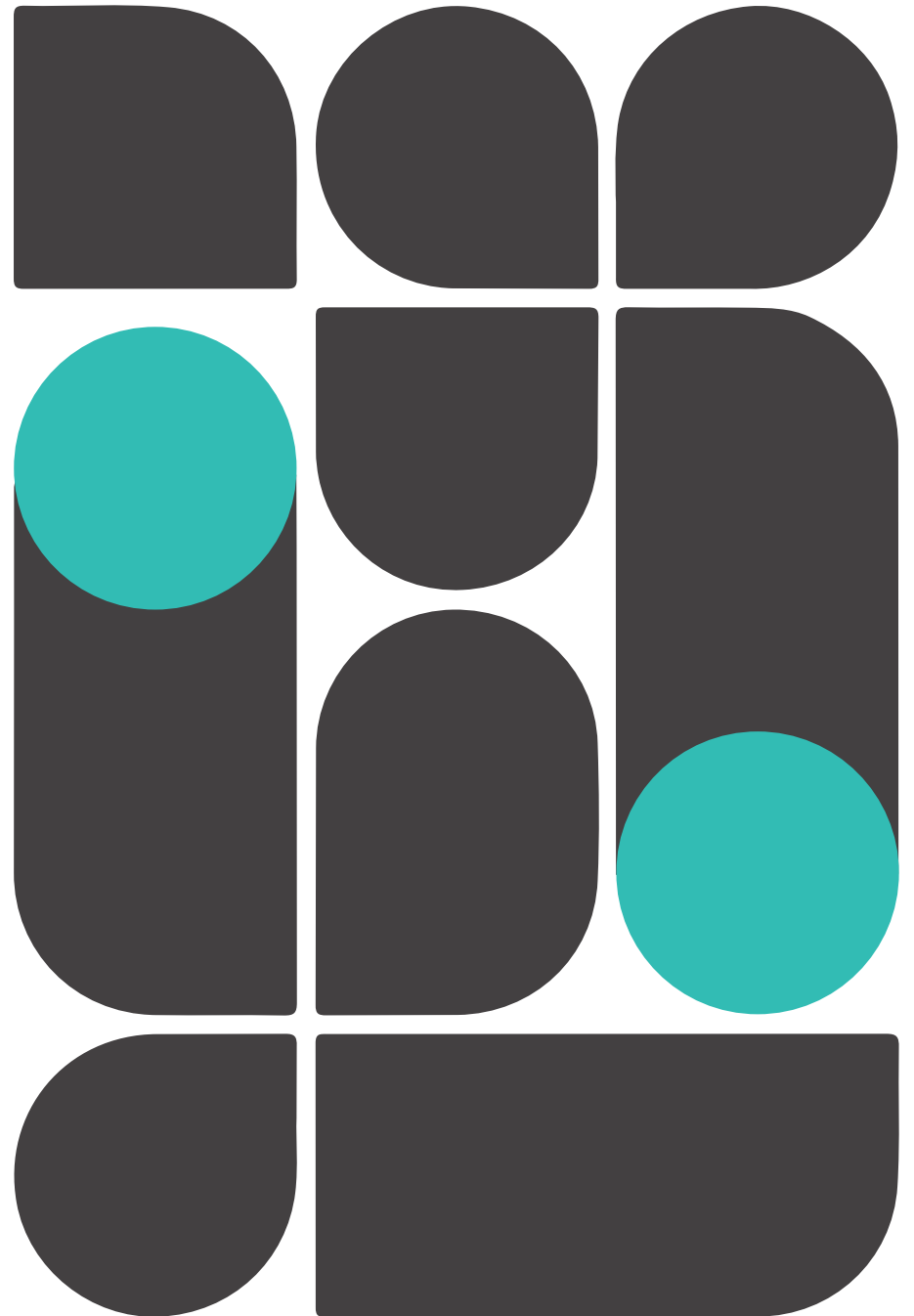
Laura Fowler - Principal Consultant, ISBE

Rocio Casillas - Principal Consultant, ISBE



“Education is the passport to the future, for tomorrow belongs to those who prepare for it today.”

—Malcolm X





Education is not preparation for life; education is life itself.

- John Dewey

Please Visit our Exhibitors

- AT Exchange Network (ATEN)
- Autism Professional Learning and Universal Supports (APLUS)
- Autism Training and Technical Assistance (ATTA)
- Behavior Assessment and Training Project (BAT)
- Center for Intensive Behavior Support (CIBS)
- Early CHOICES
- Equip for Equality (EFE)
- Family Matters
- Family Resource Center on Disabilities (FRCD)
- Harrisburg Project
- IEP Quality Project (IEPQ)
- Illinois Alliance of Administrators of Special Education (IAASE)
- Illinois Assistive Technology Program (IATP)
- Illinois Center for Transition and Work (ICTW)
- Illinois Deaf and Hard of Hearing Commission
- Illinois DeafBlind Project
- Illinois Elevating Special Educators Network (IESE)
- Illinois Instructional Materials Center (IIMC) - Chicago Lighthouse
- Illinois Service Resource Center (ISRC)
- Infinitec Coalitions
- Infinitec/ISBE Assistive Technology Technical Assistance Services
- Philip J Rock Center
- Specific Learning Disability Support Project
- StarNet
- State Treasurer's Office - IL-ABLE
- Training Qualified IEP Interpreters (TQII) at the University of Illinois (UIUC)



Transforming
Tomorrows
Together

Thank you!

For all who were involved in the creation of this conference and for all who attended, we thank you. We hope everyone was able to take something valuable away from this conference and will be able to incorporate it into the ongoing success of your careers. See you all next year!

