

2025 Accountability Indicators Overview Webinar

Welcome!

**What is changing
for 2025?**

NOTHING

2025 ELA AND MATH PROFICIENCY

Annual ELA Proficiency Targets 5th & 6th Grade

| 5 th & 6 th Grade ELA | All | White | Black or African American | Hispanic or Latino | Asian | Two or More Races | American Indian or Alaska Native | Native Hawaiian or Other Pacific Islander | Low Income | Child With a Disability (CWD) | English Learner | Former English Learner |
|---------------------------------------------------|-------|-------|------------------------------|-----------------------|-------|----------------------|-------------------------------------|-------------------------------------------------|------------|----------------------------------|-----------------|---------------------------|
| 2022 | 22.59 | 33.15 | 6.41 | 11.00 | 41.11 | 24.42 | 16.22 | 25.66 | 9.69 | 8.24 | 1.94 | 24.81 |
| 2023 | 28.71 | 38.32 | 14.01 | 18.18 | 45.55 | 30.38 | 22.93 | 31.51 | 17.00 | 15.67 | 9.94 | 30.74 |
| 2024 | 34.84 | 43.49 | 21.61 | 25.37 | 50.00 | 36.34 | 29.63 | 37.36 | 24.30 | 23.11 | 17.95 | 36.66 |
| 2025 | 40.97 | 48.66 | 29.21 | 32.55 | 54.44 | 42.30 | 36.34 | 43.21 | 31.60 | 30.54 | 25.96 | 42.59 |
| 2026 | 47.10 | 53.82 | 36.81 | 39.73 | 58.89 | 48.27 | 43.05 | 49.06 | 38.90 | 37.97 | 33.96 | 48.52 |
| 2027 | 53.23 | 58.99 | 44.41 | 46.91 | 63.33 | 54.23 | 49.76 | 54.91 | 46.20 | 45.40 | 41.97 | 54.44 |
| 2028 | 59.36 | 64.16 | 52.01 | 54.09 | 67.78 | 60.19 | 56.46 | 60.76 | 53.50 | 52.84 | 49.97 | 60.37 |
| 2029 | 65.49 | 69.33 | 59.61 | 61.27 | 72.22 | 66.15 | 63.17 | 66.61 | 60.80 | 60.27 | 57.98 | 66.29 |
| 2030 | 71.61 | 74.50 | 67.20 | 68.46 | 76.67 | 72.11 | 69.88 | 72.45 | 68.10 | 67.70 | 65.98 | 72.22 |
| 2031 | 77.74 | 79.66 | 74.80 | 75.64 | 81.11 | 78.08 | 76.59 | 78.30 | 75.40 | 75.13 | 73.99 | 78.15 |
| 2032 | 83.87 | 84.83 | 82.40 | 82.82 | 85.56 | 84.04 | 83.29 | 84.15 | 82.70 | 82.57 | 81.99 | 84.07 |
| 2033 | 90.00 | 90.00 | 90.00 | 90.00 | 90.00 | 90.00 | 90.00 | 90.00 | 90.00 | 90.00 | 90.00 | 90.00 |

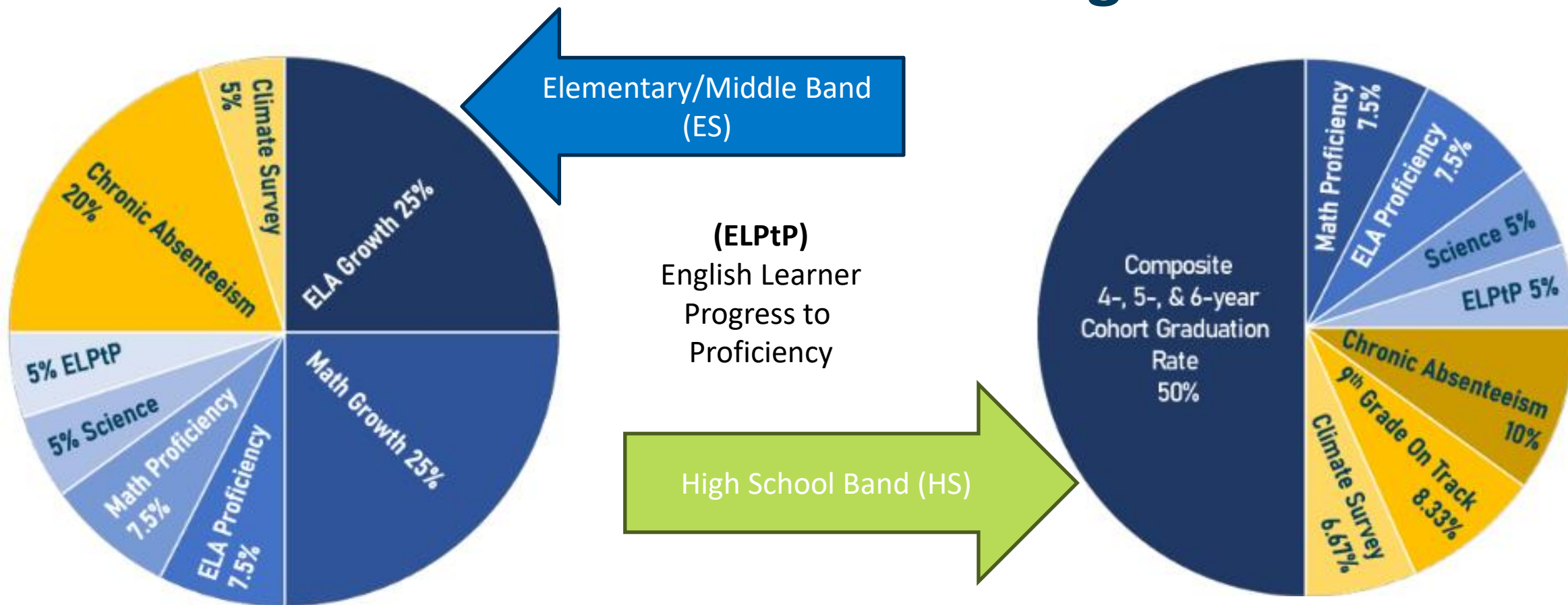
2025 META INDICATORS

**No Meta Indicators added to
Summative calculations.**

CCR P - 2 Elementary/ Middle Fine Arts

**Meta Indicators will remain on the
Illinois Report Card.**

2025 Indicators and Weights



Proficiency Indicator

The Raw score is calculated by dividing the number of proficient students by the number of students who took the test. Note: this is done by grade groups for ELA and Math.

The Raw Score is then divided by the Annual Target; that quotient is then multiplied by the Grade Group Weight to calculate the Indicator Score.

If you have more than one grade group, the scores are added together for the Total Indicator Score.

ELA

Math

Science

Proficiency Indicator

Example: 40 out of 100 students in grades 7 and 8 were proficient or above proficient in math. And 15 out of 50 sixth grade students were proficient or above proficient.

| | 5/6 | 7/8 |
|-----------------------|-------|-------|
| Number Proficient | 15 | 40 |
| Number of Students | 50 | 100 |
| RAW (percent) | 30 | 40 |
| Annual Target | 37.04 | 37.64 |
| RAW/ Annual Target | 80.99 | 1.06 |
| Grade Group Weight | 33.3 | 66.6 |
| Grade Group Indicator | 26.97 | 70.78 |
| Total Indicator Score | 97.75 | |

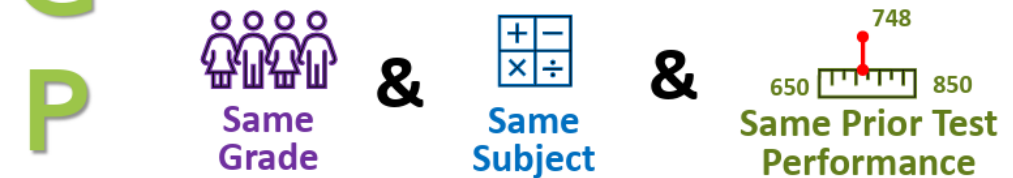
Growth Indicator

- Student growth percentile (SGP) is a measure of student growth that compares a student's performance over time to that of their academic peers (e.g., students in Illinois who have the same scale score in the prior year). Individual student growth percentiles range from 1 to 99. A score of 50 represents average or expected growth each year. These scores are averaged to create a school or student group mean student growth percentile (MSGP).

A measure of a student's progress from one year to the next

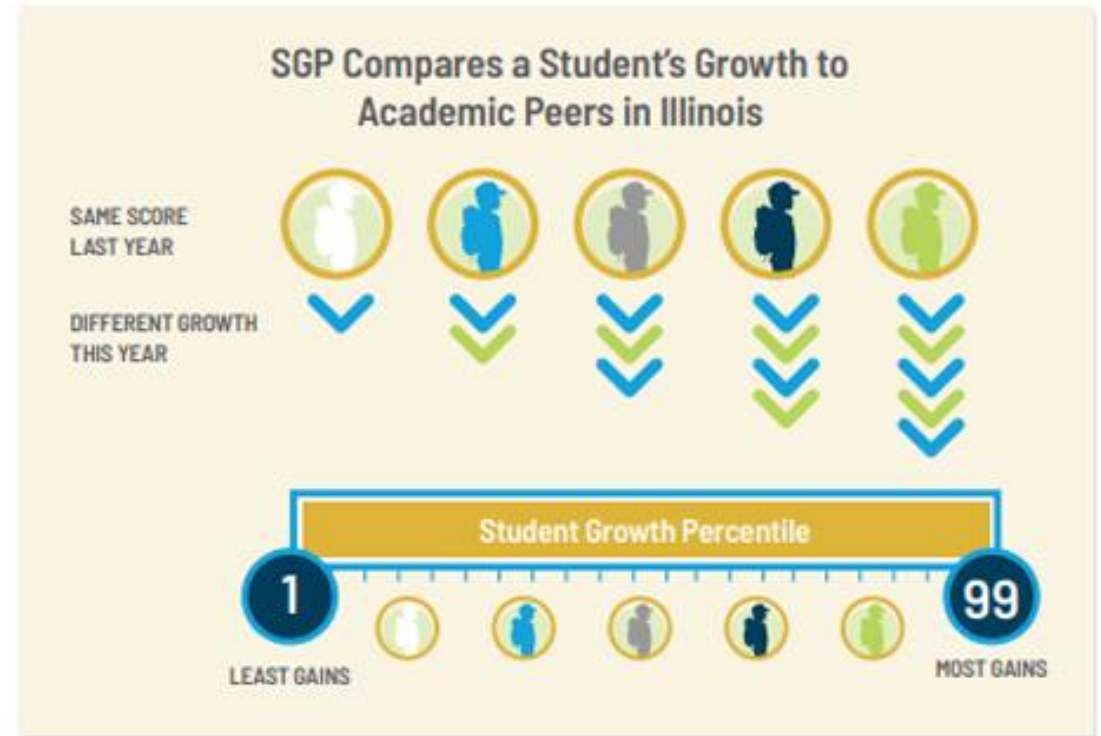


Compared to “academic peers” statewide



Growth Indicator

- Within that comparison group
 - Same grade
 - Same subject
 - Same test score in the previous year
- Students who make the most progress get an individual SGP of 99
- Students who make the least progress get an individual SGP of 1
- Students in the middle get an individual SGP of 50
- Everyone else is gets a score based on where they fall in that distribution



Growth Indicator

The average of individual subject SGPs equals the subject MSGP.

Multiply MSGP by $(20/9)$ then subtract 62.2222222221.

$$(MSGP \times 20/9) - 62.2222222221$$

An MSGP ≥ 73 earns 100 indicator points and an MSGP ≤ 28 earns 0 indicator points.

ELA

Math

English Learner Progress to Proficiency (ELPtP) Indicator

ELPtP is a measure of the extent to which a multilingual student is on track to reach proficiency within five years.

ELPtP incorporates both starting point (grade and level of proficiency) of the student and their unique annual progress.

If you wanted to save \$1100 over the next 5 weeks and you already have \$100 saved, how much will you need to save each week for the next 5 weeks?

If you said \$200, you are right and already understand the basics of ELPtP.

English Learner Progress to Proficiency (ELPtP) Indicator

ACCESS Proficiency Scale Scores by Grade Level

These ACCESS for ELLs® scale scores correspond to the 4.8 proficiency level at each grade level.

| Grade | ELP SS |
|-------|--------|
| K | 319 |
| 1 | 339 |
| 2 | 353 |
| 3 | 365 |
| 4 | 376 |
| 5 | 384 |

| Grade | ELP SS |
|-------|--------|
| 6 | 393 |
| 7 | 400 |
| 8 | 406 |
| 9 | 412 |
| 10 | 418 |
| 11 | 423 |
| 12 | 428 |

| Timeline Target | Revised Target | ELPtP | Indicator Score |
|-------------------------------------------------------------------------------------------------------------------------------------------------------------------------------------------------------------------------------------------------------------------|------------------------------------------------------------------------------------------------------------------------------------------------------------------------------------------------------------------------------------------------------------------------------------------|------------------------------------------------------------------------------------------------------------------------------------------------------------------------------------------------------------------------------------------------------------------------------------------------------------------------------------------------------------------------------------------------------------------------------------------------------|--------------------------------------------------------------------------------|
| <p>(Proficiency Grade Scale Score – Initial Score) / 5</p> <p>Example: Student scored a 356 their first year in 5th grade. Use 10th grade target (418). Subtract 356 from 418 and divide by 5. $(418 - 356) / 5 = 12.4$</p> | <p>(Proficiency Grade Scale Score – Prior Scale Score) / Years left to grow</p> <p>Continued Example: Same student scored a 378 in 6th grade. Still use 10th grade target (418). Subtract 378 from 418 and divide by 4. $(418 - 378) / 4 = 10$</p> | <p>$(\text{Current_Scale_Score} - \text{Prior_Scale_Score}) \div \text{Applicable Gain Target}$</p> <p>If ELPtP score ≥ 1 give 100 points.</p> <p>If ELPtP score < 1 and > 0 give ratio $\times 100$.</p> <p>If ELPtP score ≤ 0 give 0 points.</p> <p>$(378 - 356) / 12.4 = 1.77$ Percent is over 1 so student Receive a score of 100.</p> | <p>Sum of all associated ELPtP scores \div Number of Students</p> |

English Learner Progress to Proficiency (ELPtP) Indicator

Graduation Rate Indicator

The 4-, 5-, and 6-year Composite Graduation Rate is a combination of those years' Adjusted Cohort Graduation Rate. Adjusted Cohort Graduation Rate is the rate of graduates compared to the total number of students in their 4-year, 5-year, and 6-year cohort for schools and student demographic groups. The cohort is based on the number of students who enter Grade 9 for the first time, adjusted by adding into the cohort any student who transfers in later during Grade 9 or during the next three years and subtracting any student from the cohort who transfers out, emigrates to another country, transfers to a prison or juvenile facility, or dies during that same period.

Graduation Rate Indicator



Composite Graduation Rate: 4 Year, 5 year, and 6 year.

Weighted Graduation Rate: 4 year is 60%, 5 year 30%, and 6 year 10%.

Calculations: $(\text{Composite Rate} \times 3.7975) - 253.16456$

A weighted composite rate ≥ 93 is 100 points.

A weighted composite rate ≤ 66.67 is 0 points.

Climate Survey Indicator

Climate Survey Student Response Rate is the total number of individual students responding to the Climate Survey, divided by the total number of eligible students.

Students are eligible to participate if they are enrolled in a school and are cognitively able to participate in the survey.

$(\text{Survey Participation Rate} * (20/9)) - 111.11$

Participation rate $\geq 95\%$ = 100 points, participation rate $\leq 50\%$ = 0 points.

Chronic Absenteeism Indicator

Student Level: Students who have missed 10% or more of school days (excused or unexcused).

The combined total number of days absent divided by that student's length of enrollment.

School Level: $(\text{Chronically Absent Students} \div \text{Total Students}) * 100 = \text{C.A. Rate}$
 $100 - \text{Chronic Absenteeism Rate} \times 2 = \text{Indicator Score}$

Chronic Absenteeism Rate $\geq 50\%$ = 0 points

9th Grade on Track Indicator

This metric is the percentage of first-time ninth-grade students who have earned at least five course credits without failing more than 0.5 course credits in their core subjects.

For the purpose of this metric, core subjects include reading, math, science, and social studies.

$(\text{Percent On Track} - 66.6) * 3$, with negative values rounded to 0, and a maximum score of 100

On-Track rate $\leq 67\%$ = 0 points

2025 Accountability Indicators Overview Webinar

Thank You!

www.isbe.net/summative

www.isbe.net/Pages/Accountability-Indicators.aspx

mleather@isbe.net

