



Illinois State Board of Education

# Standards Quick Overview and Assessments

Division of English Language Learning

August 2015



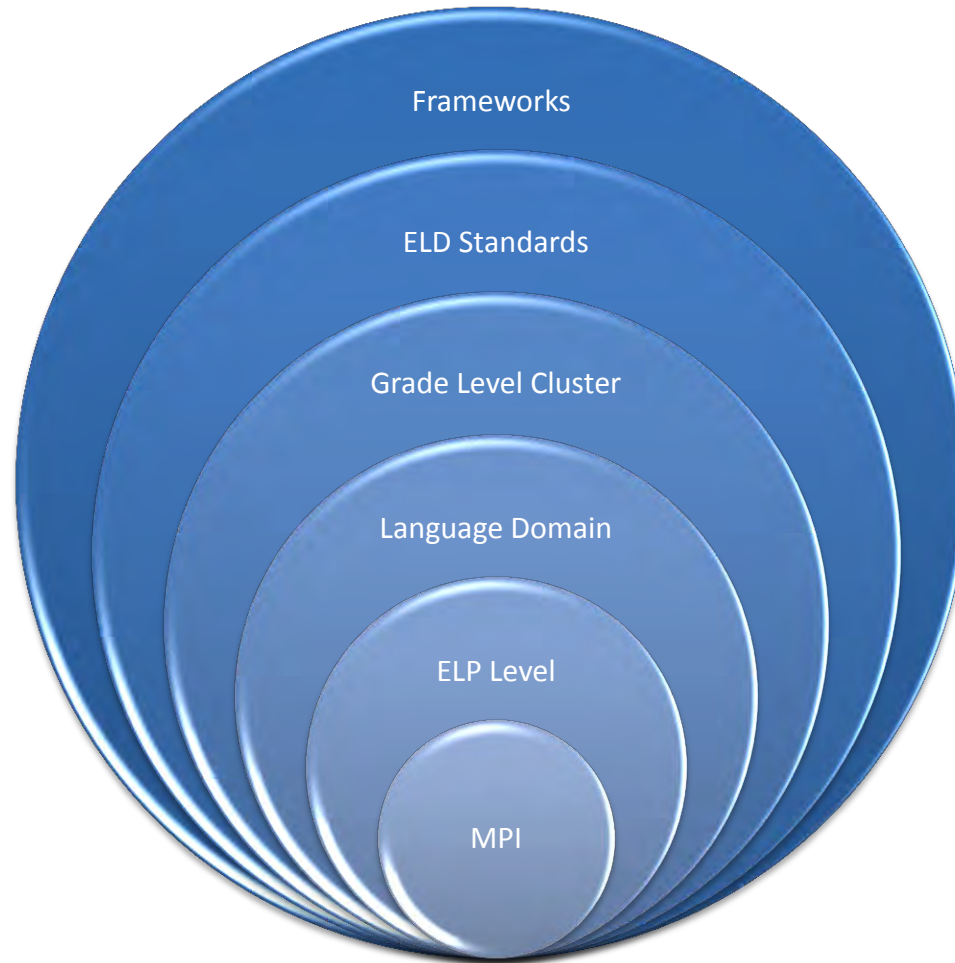
# Overview

- Quick Review
  - Standards
  - Grade level clusters
  - Domains
  - ELP Levels
  - MPIs
- ACCESS for ELLs
- Administrative responsibilities





# Organization of Standards





# Standards

## **Standard 1 – Social & Instructional Language**

English language learners communicate for **social and instructional** purposes in the school setting.

## **Standard 2 – Language of Language Arts**

English language learners communicate information, ideas and concepts necessary for academic success in the content area of **Language Arts**.

## **Standard 3 – Language of Mathematics**

English language learners communicate information, ideas and concepts necessary for academic success in the content area of **Math**.

## **Standard 4 – Language of Science**

English language learners communicate information, ideas and concepts necessary for academic success in the content area of **Science**.

## **Standard 5 – Language of Social Studies**

English language learners communicate information, ideas and concepts necessary for academic success in the content area of **Social Studies**.



# Grade Level Clusters

- **Standards:**
  - Individual grade levels K-8, 9-10, 11-12
- **Assessments**
  - K, 1-2, 3-5, 6-8, 9-12
- **CAN DO Descriptors**
  - K, 1-2, 3-5, 6-8, 9-12



# Language Domains

- **Receptive**

- **Listening:** Process, understand, interpret and evaluate spoken language in a variety of situations
- **Reading:** Process, understand, interpret and evaluate written language, symbols and text with understanding and fluency

- **Productive**

- **Speaking:** Engage in oral communication in a variety of situations for a variety of purposes and audiences
- **Writing:** Engage in written communication in a variety of situations for a variety of purposes and audiences



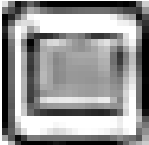
Listening



Speaking



Reading



Writing



English Language Proficiency Levels

1.0 Entering

2.0 Beginning

3.0 Developing

4.0 Expanding

5.0 Bridging

6.0 Reaching

- Oral: Listening/Speaking
- Literacy : Reading and Writing
- Comprehension: Reading and Listening
- Overall: Listening, Speaking, Reading, Writing



# Model Performance Indicators (MPI)

	1	2	3	4	5
Listening					
Speaking					
Reading					
Writing					

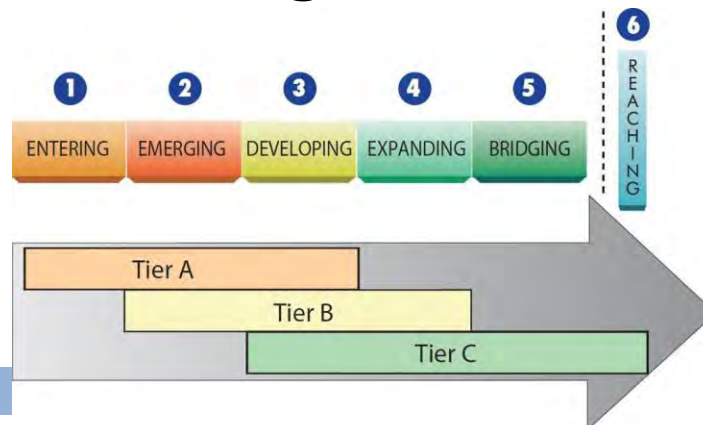
- MPI: will be specific to the grade-level cluster, domain, and standard (content area), but it will address a language skill
  - Language function: how students use language
  - Content stem: context for language instruction, connected to content standards
  - Support: instructional strategies to assist students (sensory, graphic, or interactive)





# ACCESS for ELLs

- Anchored in the ELD Standards
- Assesses academic language
- Indicates the extent to which academic language proficiency might be a barrier to the student's accessing academic content
- Three tiers for each grade level cluster





# ACCESS for ELLs

## Kindergarten

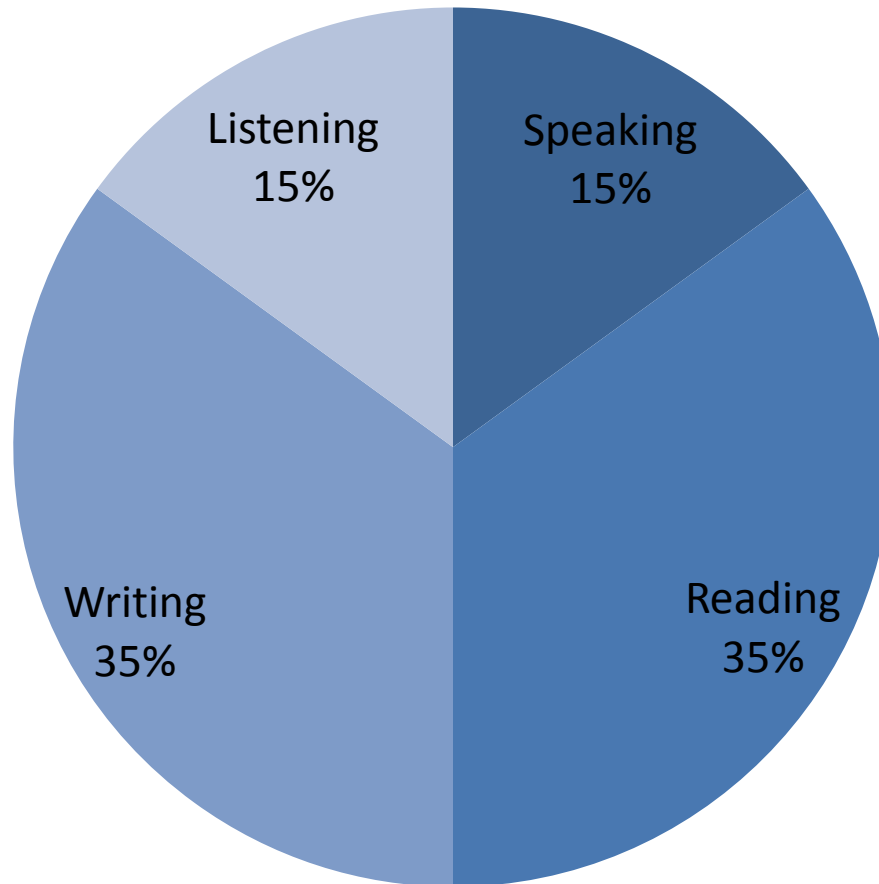
- All domains individually administered

## Grades 1-12

- Speaking is administered individually
- Listening and Reading may be administered together in one group session
- Writing is administered in a separate group session
- The domains can be administered in any order



# Composite Score Weights





## English Language Proficiency Criteria in IL

- In Illinois, students are “English Language Proficient” if on the annual ACCESS assessment they receive at least:
  - Overall 5.0 and
  - 4.2 Reading, and
  - 4.2 Writing





# Assessment

*Teachers go through training on WIDA website to become certified to administer ACCESS ([www.WIDA.us](http://www.WIDA.us))*

Ongoing

Districts start ordering ACCESS for ELLs<sup>®</sup> from DRC

October 21, 2015

Based on SIS, vendor receives information to create labels for the assessment

November 6, 2015

Last day of ACCESS for ELLs<sup>®</sup> ordering from DRC

November 6, 2015

Districts/CPS schools receive ACCESS for ELLs<sup>®</sup> materials

January 4, 2016



# Assessment

ACCESS for ELLs® Testing (Regular Test Window)	January 11, 2016- February 12, 2016
Ship materials to DRC	February 19, 2016
ACCESS data correction window	May 4, 2016- May 22, 2016
ACCESS Posting of Final Scores	Mid-July, 2016
Final Reports Shipped to Districts	August 1, 2016



# Division of English Language Learning

<http://www.isbe.net/bilingual/default.htm>

(312) 814-3850

dell@isbe.net

