



Illinois State Board of Education

Darren Reisberg, Chairman

Dr. Carmen I. Ayala, Superintendent of Education

ACCESS Assessment Updates 2021-2022

Barry Pedersen
EL Assessment Coordinator

October 2021



ACCESS 2021 Provisional Results

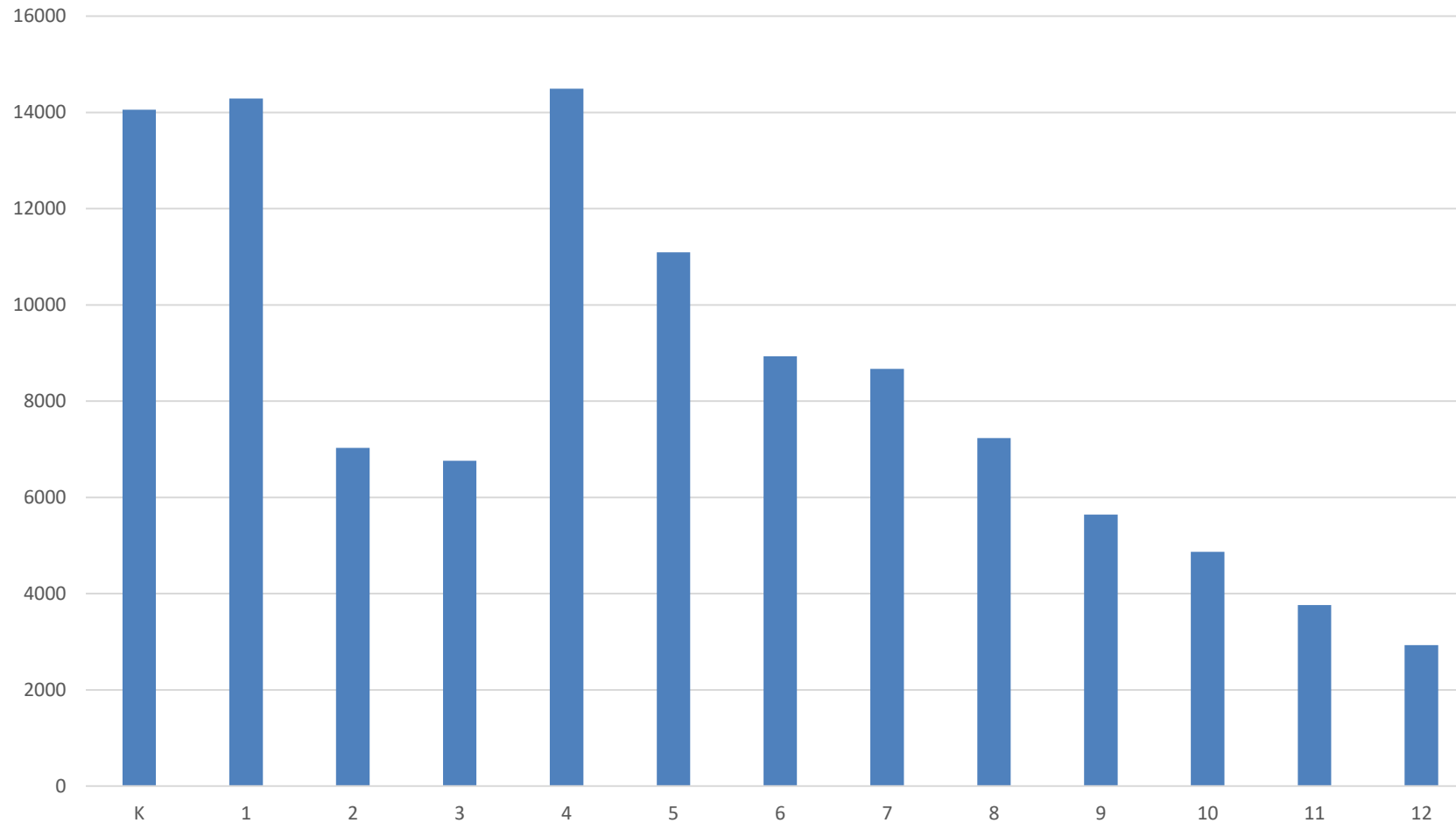
Spring Testing

- ACCESS Test 109,762 complete records in the early results file
- Online Mode – 87.2% of Grades 1-12
- Proficient – 6.9%
- Fall and spring results in Nov. 8-19, 2021



ACCESS 2021 Recap

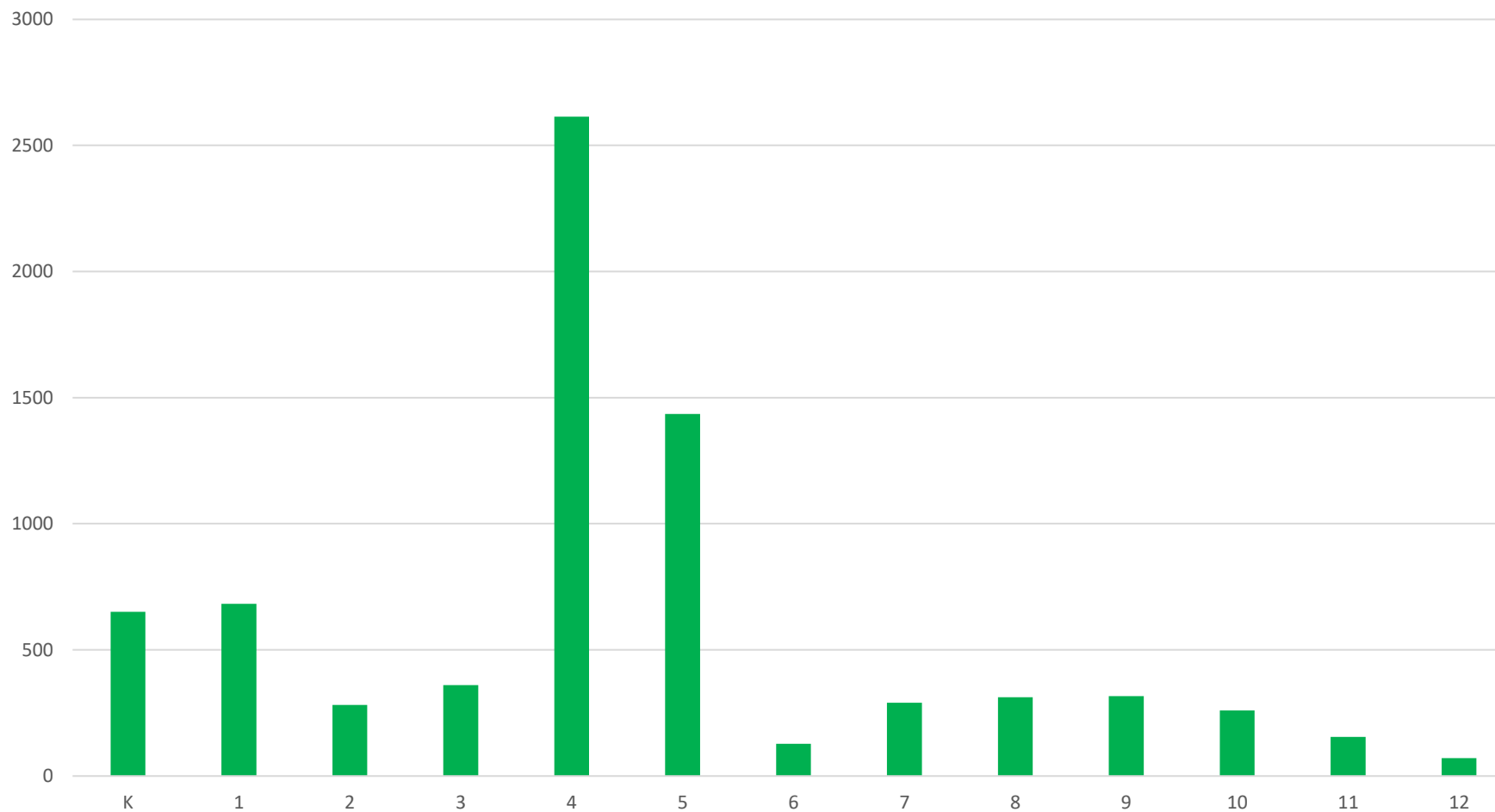
Spring 2021 Early ACCESS Counts by Grade





ACCESS 2021 Recap

2021 Spring Early Proficiency Counts by Grade





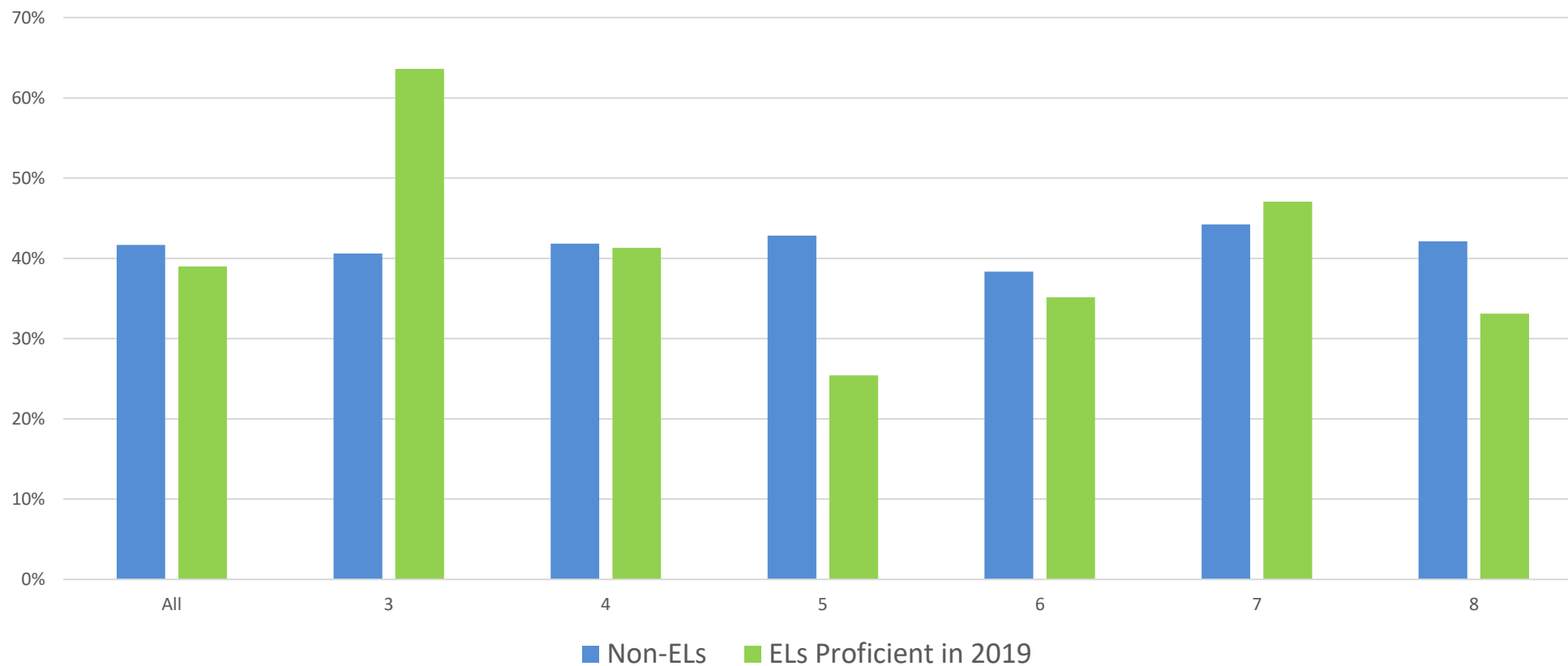
ACCESS Score Report Resources

- [ACCESS for ELLs Interpretive Guide for Score Reports](#)
- [Alternate ACCESS for ELLs Interpretive Guide for Score Reports](#)
- [ACCESS for ELLS: Understanding Your Child's Scores](#) - flyer, available in 13 languages
- [Alternate ACCESS for ELLs: Understanding Your Child's Scores](#) - flyer for students who took Alternate ACCESS
- [ACCESS for ELLs Parent Letters](#) - now available in 47 languages
- [ACCESS for ELLs Scores and Reports](#)
- [Alternate ACCESS Scores and Reports](#)



ACCESS and IAR 2019

Non-ELs and Newly Proficient ELs
ELA Performance Levels 4-5
Illinois Assessment of Readiness 2019





WIDA's Observations for 2021

Number of English Learner Students Tested Online (Across Three Years)

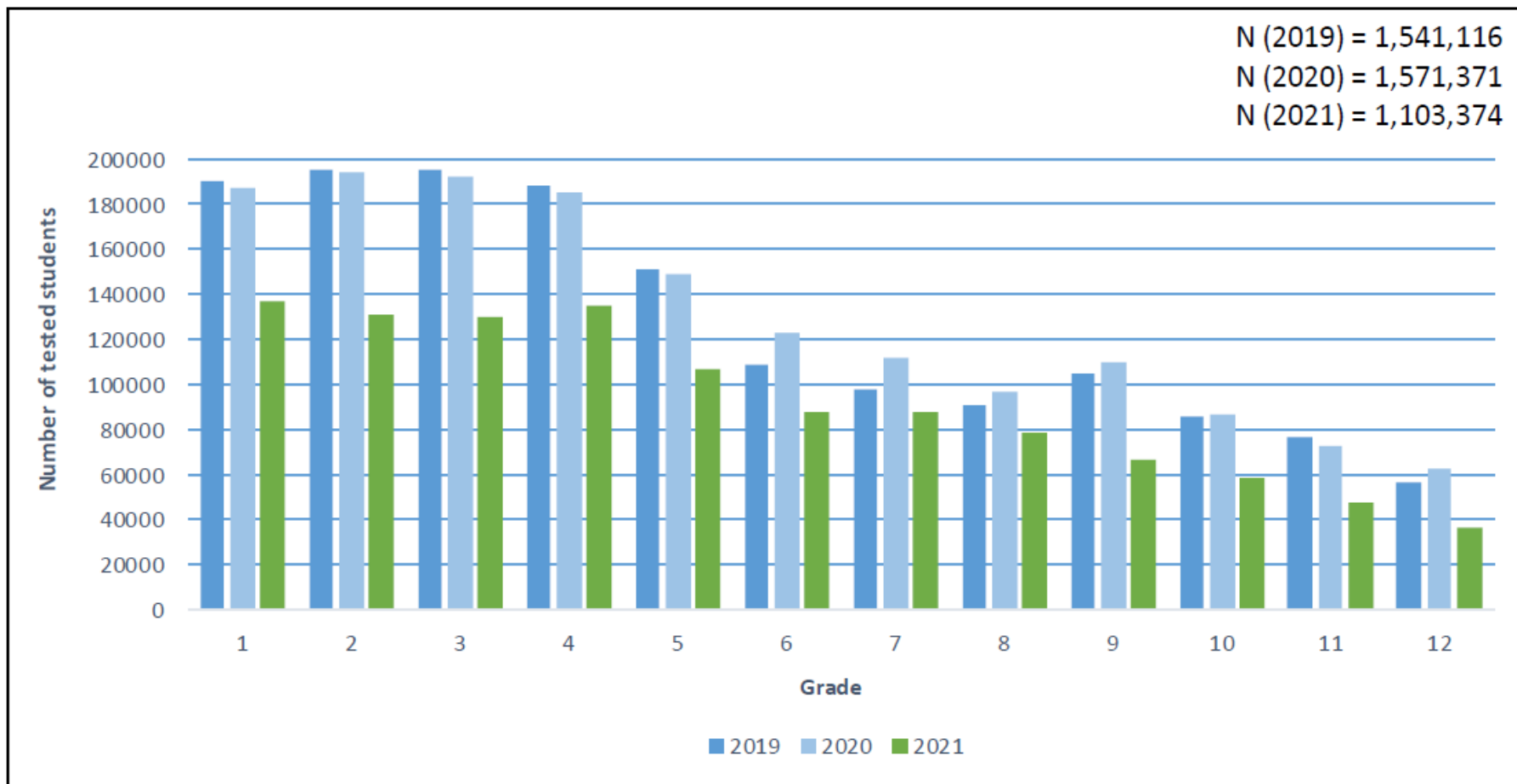


Figure 1: This bar graph shows how many students in each grade (1–12) took ACCESS in 2019, 2020, and 2021. The y-axis shows the number of students up to 200,000 and the x-axis shows each grade.



WIDA's Observations for 2021

English Learner Testing Participation

- There were fewer English learners tested in 2021 compared to 2019 and 2020.
- Overall, the number of students tested online in the 2021 sample was about 30% lower compared to previous years.
- Elementary grades (grades 1–5) had larger proportions of missing students compared to other grades.
- Examining the demographic composition, as collected by WIDA, of the students who took the test and comparing this data to previous years, we found that no student subgroup was disproportionately represented.
- WIDA does not collect important data elements like students' socioeconomic status.



WIDA's Observations for 2021

English Learner Proficiency by Grade

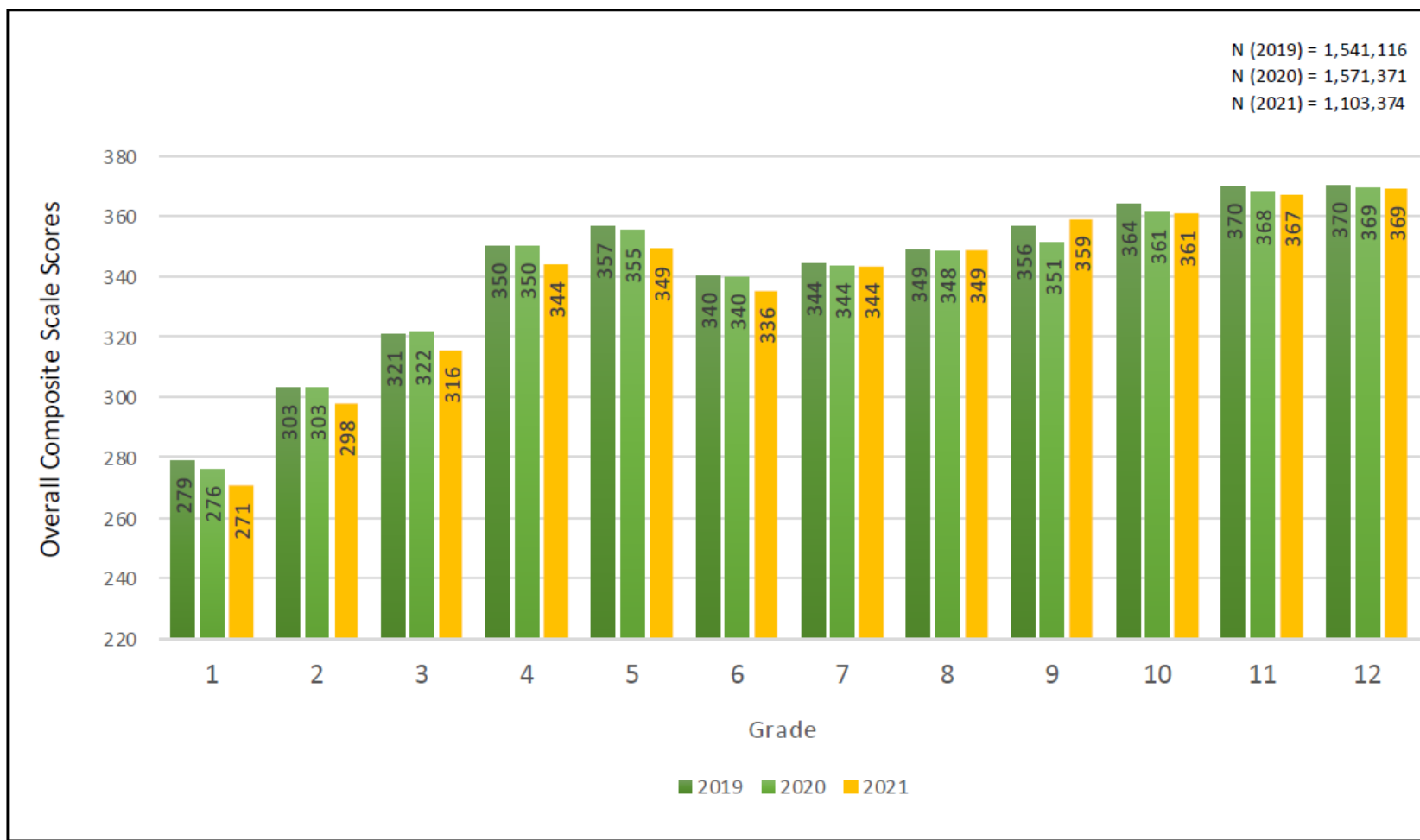


Figure 2: This bar graph compares the average proficiency in each grade (1–12) for English learners who took ACCESS in 2019, 2020, and 2021. The y-axis, ranging from 220 to 380, measures students' average proficiency in Overall composite scale scores.



WIDA's Observations for 2021

English Learner Proficiency by Grade

- English learner proficiency on ACCESS, as measured in Overall composite scale scores, trended lower for most grades compared to previous years.
- English learner proficiency on ACCESS was lower in the elementary school grades.
- Overall proficiency in the middle and high school grades changed little from 2019 to 2021.



WIDA's Observations for 2021

English Learner Proficiency in Scale Scores, by Domain and Grade



Figure 3: These four bar graphs show English learner proficiency by grade (grades 1–12) and by the four language domains of Reading, Speaking, Listening, and Writing during 2019, 2020, and 2021. The y-axis, ranging from 200 to 450, represents scale scores and the x-axis shows each grade (1–12).



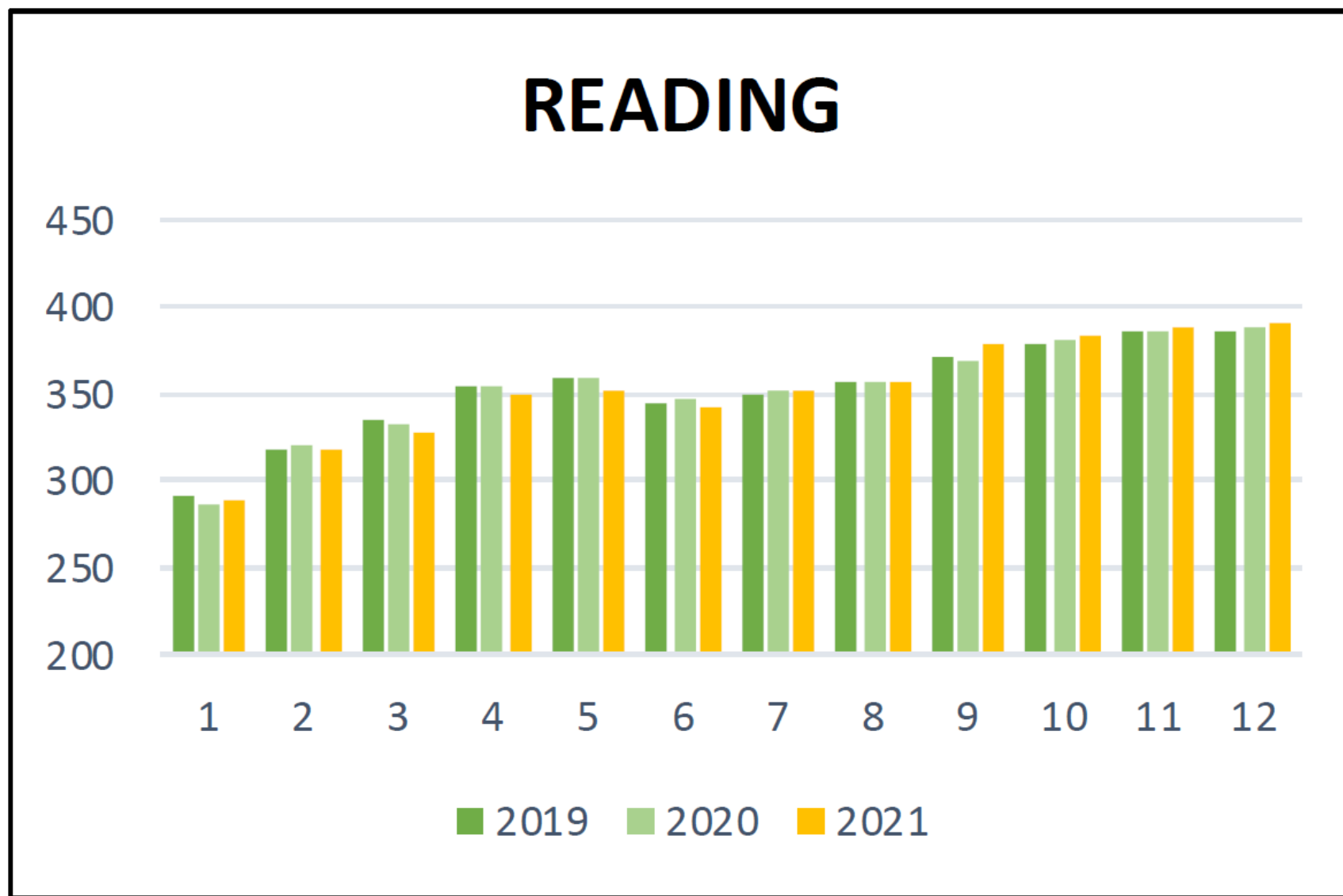
WIDA's Observations for 2021

English Learner Proficiency by Domain and Grade

- Proficiency in **Reading** decreased slightly in the elementary and middle school grades, while it increased slightly in the high school grades.
- Proficiency in **Speaking** decreased in the elementary and middle school grades.
- Proficiency in **Listening** decreased in grades 1–5 and slightly increased in grades 6–12.
- Proficiency in **Writing** decreased in all grades, with the larger declines in the lower grades.

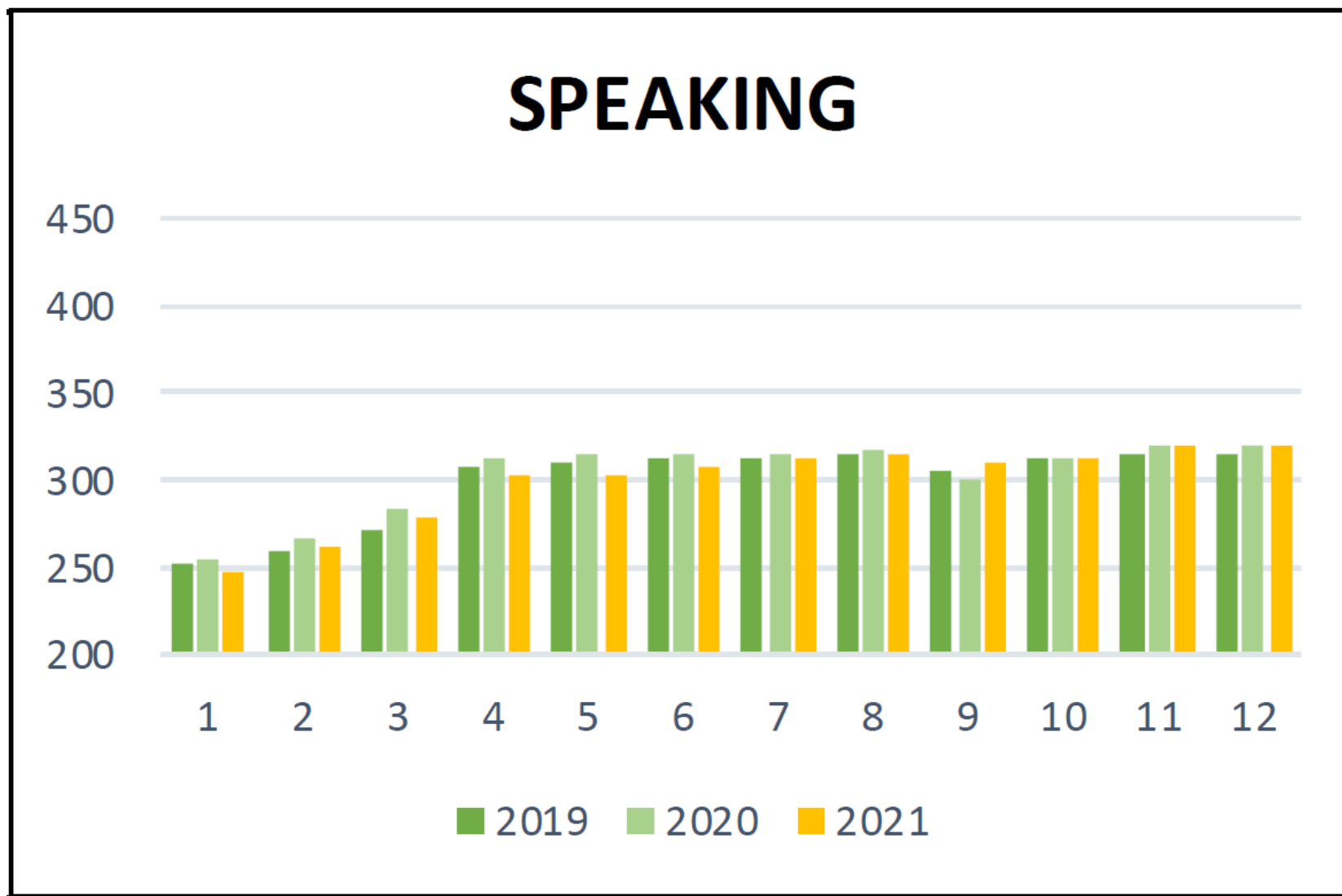


WIDA's Observations for 2021



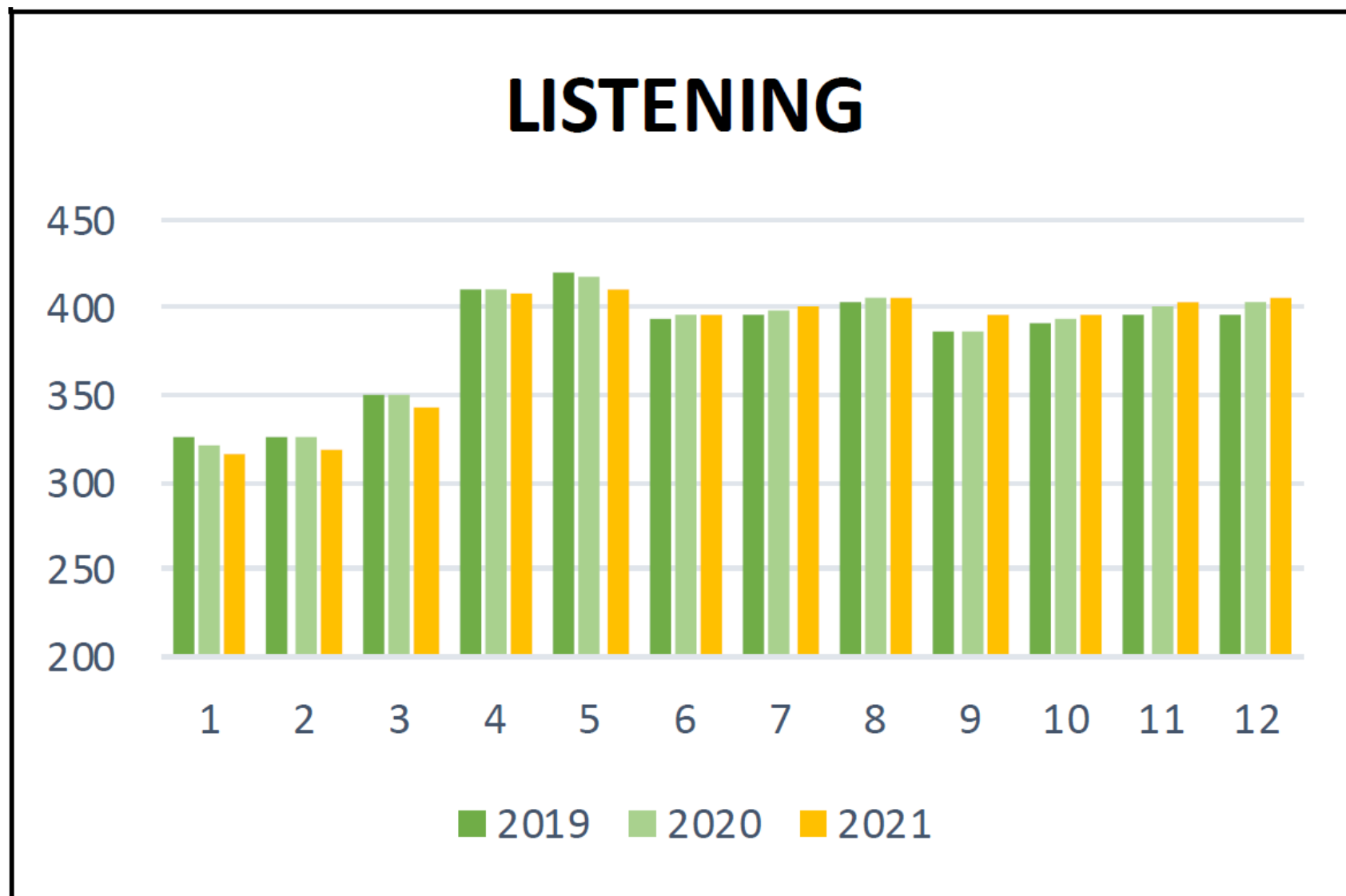


WIDA's Observations for 2021



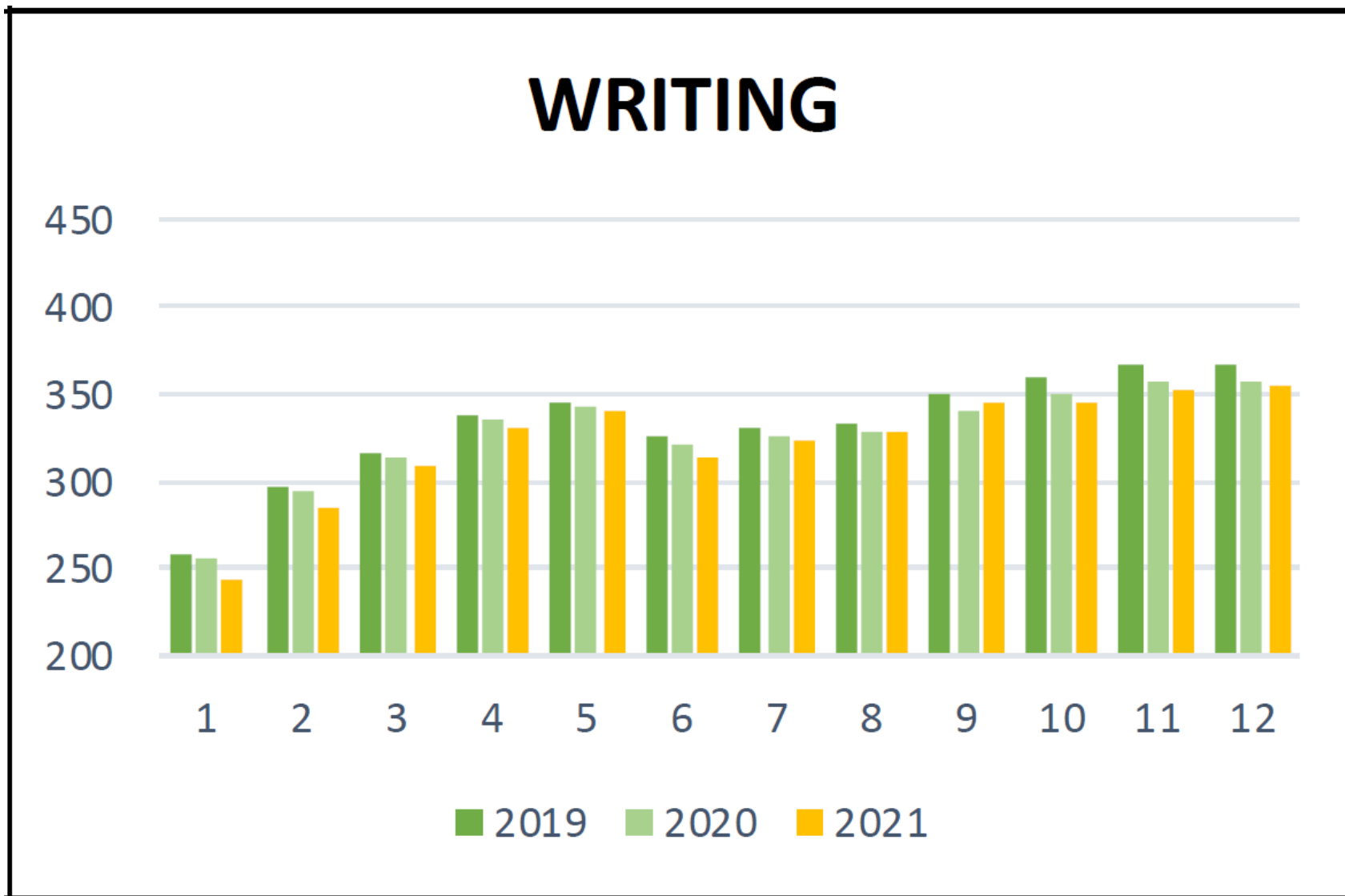


WIDA's Observations for 2021





WIDA's Observations for 2021





WIDA's Observations for 2021

English Learner Growth by Grade

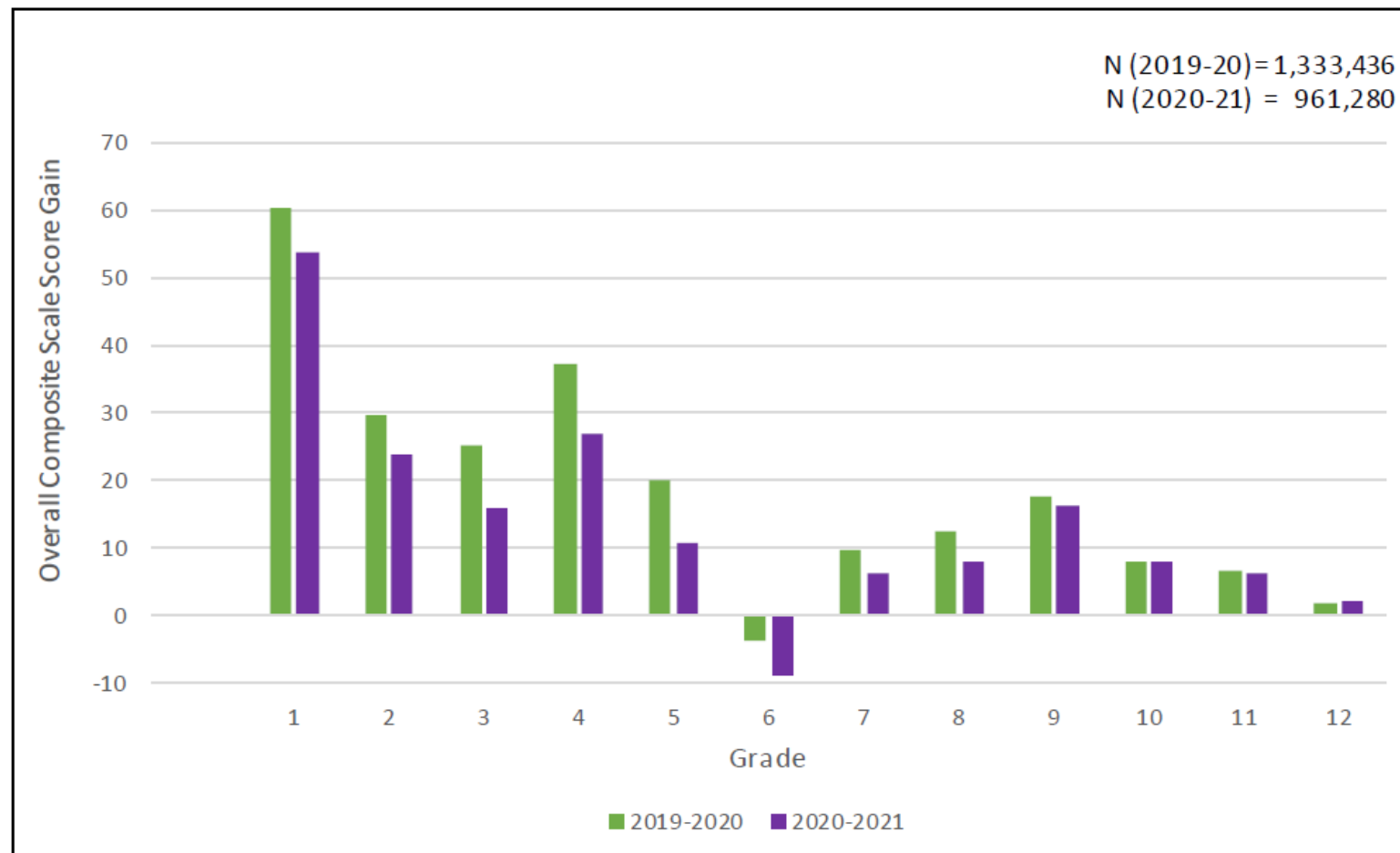


Figure 4: This bar graph shows English learner growth by grade during 2019–20 and 2020–21. The y-axis, ranging from -10 to 70, shows the Overall composite scale score gain. The x-axis shows each grade (1–12).



WIDA's Observations for 2021

English Learner Growth by Grade

- English learners' growth, as measured in annual Overall composite scale score gains, decreased compared to growth in the previous year.
- Overall composite scale score growth was about 25% lower compared to the previous year. Achieving high growth was specifically difficult for English learners in elementary and middle school grades.
- Growth in the high school grades was similar to the previous year.



WIDA's Observations for 2021

English Learner Growth by Domain

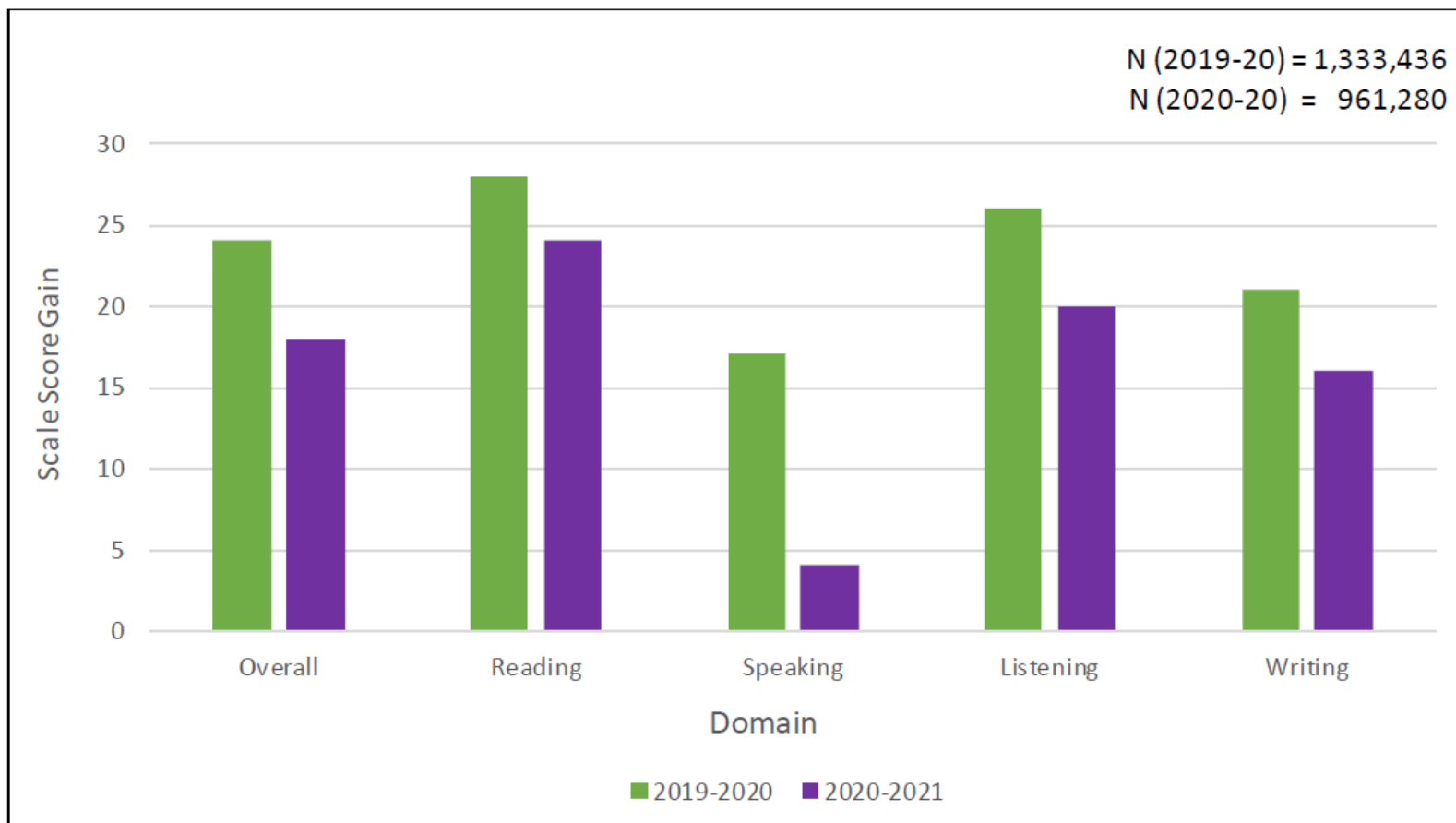


Figure 5: This bar graph shows English learner growth in the four language domains of Reading, Speaking, Listening, and Writing, plus the Overall composite score during 2019–20 and 2020–21. The domains/composite are represented in the x-axis. The y-axis, which goes up to 30, shows the scale score gain.



WIDA's Observations for 2021

English Learner Growth by Domain

- Since the pandemic began, English Learners' growth was about 24 Overall composite scale score points across all grades. After the pandemic, growth in composite scores declined by about 25%, down to 18 Overall composite scale score points.
- The largest relative decline in growth was in the domain of Speaking ($\approx 75\%$), followed by Listening and Writing ($\approx 25\%$).



ACCESS Future in Illinois

- [2020 ELD Standards](#) – Items to appear on ACCESS in SY2025
- [WIDA Kindergarten Screener](#) – Coming in late spring of SY2021



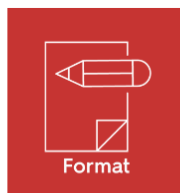
Welcome to the WIDA English Language Development Standards Framework, 2020 Edition



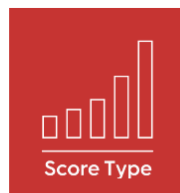
Identification



U.S.
Kindergarten
Grade 1



Paper



Proficiency
Level

- Alternate ACCESS Proficiency Criteria



ACCESS Assessment Communications

- [ISBE Assessment Updates](#) (listserv) - weekly email for ISBE assessment news
- [Assessment Webinars](#) on select Fridays through the school year. ([archive](#) and slides and recordings)
- WIDA’s Monday Mail – Secure Portal Account with *Assessment* package.

The screenshot shows the Illinois State Board of Education website. At the top right, there are links for "System Quick Links", "Illinois Report Card", "Careers at ISBE", and "Contact Us", along with a search bar. Below this is a dark blue navigation bar with icons and labels for "HOME", "ADMINISTRATORS", "TEACHERS", "FAMILIES & STUDENTS", "COMMUNITY & PARTNERS", and "NEWS & MEDIA". A sidebar menu on the left is open to the "ASSESSMENT" section, with "Communications" highlighted. Under "Communications", there are links for "Assessment Listserv", "Presentations and Webinars Archive", and "State Assessment Review Committee". The main content area is titled "ASSESSMENT COMMUNICATIONS" and contains four dropdown menus: "News and Updates", "Illinois Assessment Dates", "Important Links and Resources", and "Presentations and Webinars".



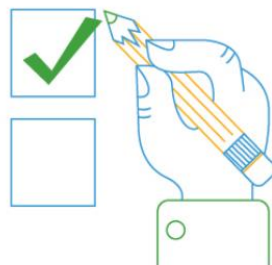
Participate in WIDA Events

Every year, WIDA invites the EL community to participate in events to review and refresh our assessment tools.

- Bias & Sensitivity Review
- Content Review
- Classroom Observations
- Surveys
- Expert Panels
- Field Testing

Test Development Process

Test development work varies from test to test and year to year. These are some key steps that typically occur between an initial concept and the final assessment you use.



Write test items and create artwork



Review by WIDA community



Analyze data

Psychometricians, who are



Finalize the assessment

If you would like to contribute WIDA's test development work, visit [Building a WIDA Assessment](#) to learn more and [apply](#).



Resources & Contacts

- WIDA Portal: <https://portal.wida.us>
- WIDA Public Website: <https://wida.wisc.edu/>
- WIDA-AMS (www.wida-ams.us)
<https://www.drctdirect.com/all/eca-portal-v2-ui/#/login>
- WIDA Client Services Center: 866-276-7735
or help@wida.us
- DRC Customer Support: 855-787-9615
or WIDA@datarecognitioncorp.com
- Barry Pedersen, ISBE: 866-317-6034, bpederse@isbe.net
- Trevor Cottle, ISBE: 866-317-6034, tcottle@isbe.net



Questions?

