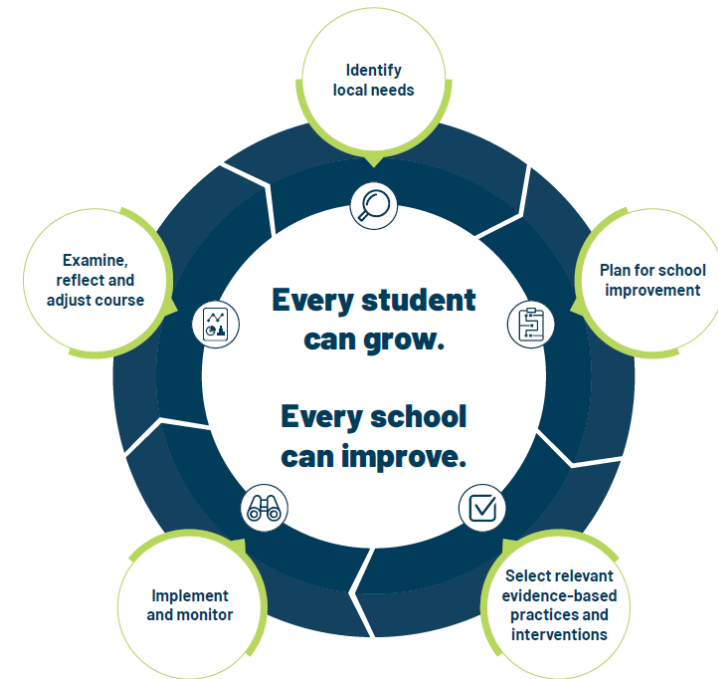




Conducting a School Level Needs Assessment





School-level needs assessment

Conducted during the planning year of newly designated intensive, comprehensive, and targeted schools.

Ensures that initial school improvement plans are developed based on high-quality data.



School-level needs assessment instruments

Foundations

- Chicago Public Schools

Illinois Quality Framework (IQF)

- Targeted Schools outside of Chicago Public Schools

State-Approved Vendor

- Schools designated intensive and comprehensive



School-level needs assessment results

Illinois State Board of Education

Careers at ISBE Contact Us   

[Log Into ELIS](#) **[Log Into IWAS](#)** [Public School District Lookup](#) [FRIS Inquiry](#) [IL Report Card](#) [About the Agency and Board](#) [Topics A-Z](#)

Illinois Quality Framework during the planning year needs to be completed in IWAS by January 31, 2024.



Resources

I am looking for school improvement resources for ...



All Schools



a Targeted
School



a Comprehensive
School



an Intensive
School



IDENTIFY LOCAL NEEDS



PLAN FOR SCHOOL IMPROVEMENT



SELECT RELEVANT EVIDENCE-BASED PRACTICES AND INTERVENTIONS



IMPLEMENT AND MONITOR

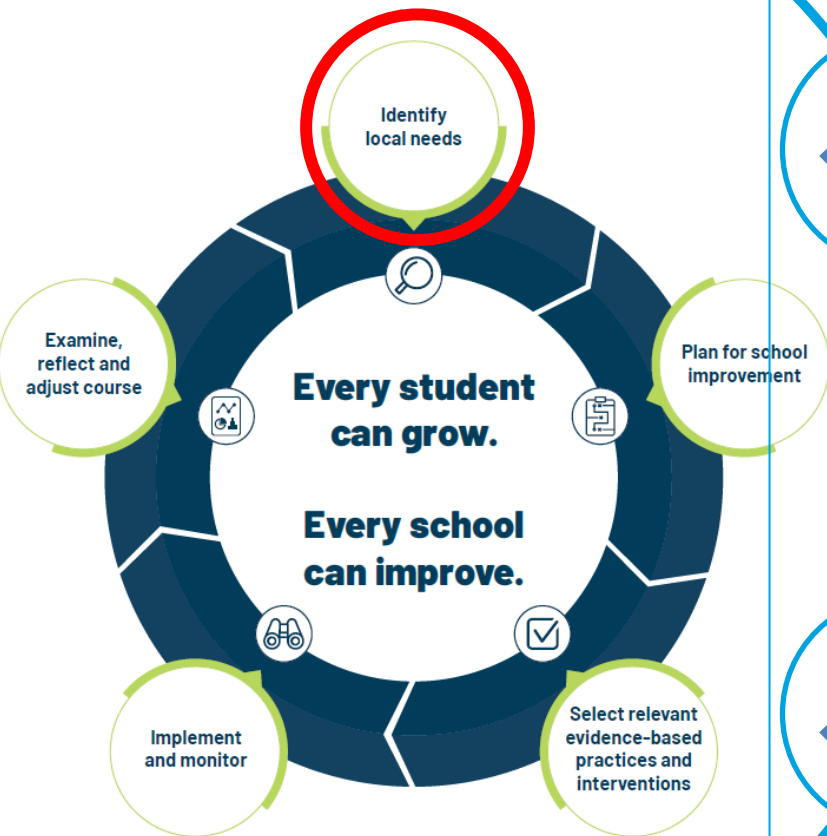


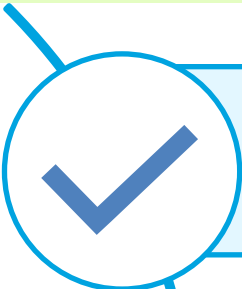
EXAMINE, REFLECT AND ADJUST COURSE


SCHOOL IMPROVEMENT GRANT APPLICATION & BUDGET GUIDANCE




School-level needs assessment



- 

Completed during the Planning Year
- 

Use the School Level Needs Assessment results when conducting a Root Cause Analysis
- 

Informs initial school improvement planning efforts



School Improvement Helpline



schoolimprovement@isbe.net

(217) 524-1817