



Webinar for District & ROE Administrators

August 13, 2019



Agenda

- Introduction
- Dr. Carmen I. Ayala
 - Announcements
 - SOS Line, Deep-Dive Webinars, Fact Sheets
 - Updates
 - EBF, ESSA State Plan, Educator Support
- Dr. Brenda M. Dixon
 - 2019 Report Card
- Dr. Ernesto Matias
 - College & Career Readiness
- Q & A





Superintendents-Only Support Line

(217) 782-2222

Monday – Friday 8 a.m.- 5 p.m.

- Now open to ROE Superintendents & ISC Directors
- ISBE Executive Staff
- Thought Partners
- We are here to help!





Deep-Dive Webinars



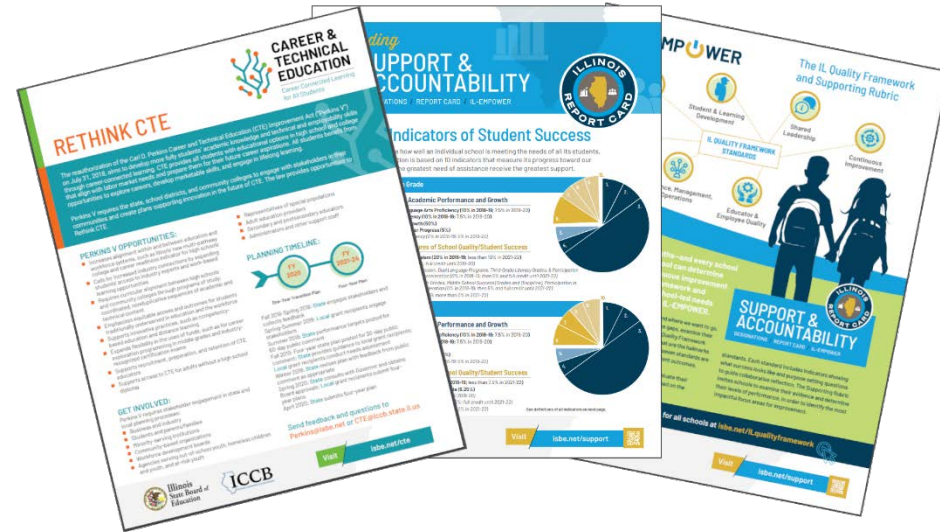
- ❖ **2019 Report Card** August 13, 1:30-3 p.m.
- ❖ **Summative Designations** August 15, 10-11:30 a.m.
- ❖ **Teacher Assignability** August 21, 10-11 a.m.
- ❖ **2019-20 Assessments Update** August 30, 10 a.m.-Noon

[Registration: www.isbe.net/backtoschool](http://www.isbe.net/backtoschool)



ISBE Fact Sheets

- [ISBE.net/FactSheets](https://isbe.net/FactSheets)
- Updated frequently
- Subscribe to receive the fact sheets directly via email by visiting isbe.net/subscribe





Evidence-Based Funding

- FY 2020 Distribution Calculations
 - [ISBE.net/ebfdist](https://isbe.net/ebfdist)
- First of 22 EBF payments issued
- On a path to adequate and equitable funding for all students, but not there yet
- IL Range of Adequacy: 47% to 280%



ESSA State Plan

- Systemwide Needs Assessment
- Upcoming guidance for Illinois Quality Framework and Support Rubric
- Action at ISBE May Board Meeting:
 - ✓ Eliminated A-F grades for growth
 - ✓ Redistribute weights of the college & career readiness and fine arts indicators – [Fact Sheet coming soon!](#)
- Collected statewide feedback for ESSA State Plan amendment



Educator Support

- Elimination of Test of Basic Skills (PA 101-220)
- Teacher Assignability – [New tool coming soon!](#)
- Educator Preparation and Retention
 - Teacher Leadership Problems of Practice Grant
 - Teacher Residency Grant
 - Diverse and Learner-Ready Teacher Network
 - Partnership for Educator Preparation
 - Continuous Improvement Communities of Practice



Welcome!

Dr. Brenda M. Dixon
Chief Research & Evaluation Officer



2019 Report Card



- **New Elements for 2019**
 - Children with Disabilities as a student group
 - Site-Based Expenditure Reporting
- **Data Review & Verification Tool**
 - **Aug. 14:** DRVT Webinar - Register at ISBE.net/ILReportCard
 - **Aug. 17:** Superintendents can begin Data Certification via MyIRC
 - **Sept. 9:** Deadline for ALL districts to certify data
 - **October:** Superintendents receive Summative Designation and Preview 2019 Report Card
 - **Certified by Sept. 9:** Preview available Oct. 1.
 - **Not certified by Sept. 9:** Preview available Oct. 15



Questions?





Welcome!

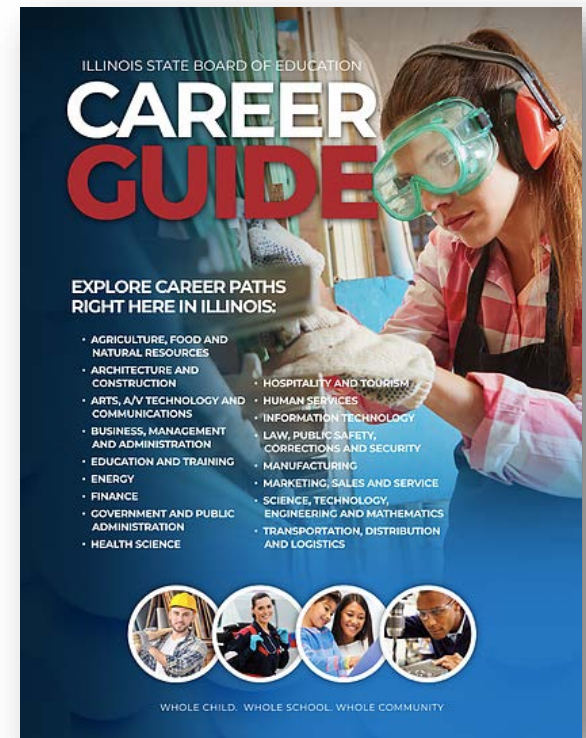
Dr. Ernesto Matias
Chief Education Officer





College & Career Readiness

- Postsecondary and Workforce Readiness Act
 - Transitional Math
 - Competency-Based Education
 - Postsecondary and Career Expectations framework
- Career Guide – New!
 - Connects learning experiences to high-skill, high-wage, and in-demand career opportunities in Illinois
 - ISBE.net/CTE





Questions?

**Dr. Carmen I. Ayala**

Illinois State Superintendent of
Education

Jason Helfer

Deputy Superintendent
of Teaching & Learning

Dr. Ernesto Matias

Chief Education Officer

Rae Clementz

Director of Assessment & Accountability

Dr. Brenda M. Dixon

Chief Research & Evaluation Officer

Jeff Aranowski

Executive Director of Safe & Healthy
Climate

Robert Wolfe

Chief Financial Officer

Mary Reynolds

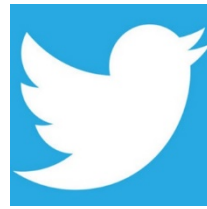
Executive Director of Innovation &
Secondary Transformation

Allison Sherman

Executive Director of IL-EMPOWER



Keep in touch!



- **Visit our webpage:** www.isbe.net/backtoschool
 - ❖ We will post the Q&A from the webinar here.
- **Like us on Facebook:**
 - ❖ www.facebook.com/IllinoisStateBoardofEducation/
- **Follow us on Twitter:** @ISBEnews
 - ❖ Use #ILBacktoSchool to share what Back to School looks like in your district!
- **Additional questions? Email us:** BacktoSchool@isbe.net



Thank you for joining us!