



Illinois State Board of Education

Healthy and Ready to Learn: A Back to School Webinar Session 2: ISBE

Presented by ISBE's Wellness Team

Original Broadcast August 23, 2019

Whole Child • Whole School • Whole Community

Back-to-School Webinar Presenters:

ISBE's Wellness Team

Rebecca Doran, MSN, RN, PEL/School Nurse, NCSN

Illinois State Board of Education
Principal Consultant
Springfield, IL

Adenike Sosina, MPH, CHES

Illinois State Board of Education
Principal Consultant
Chicago, IL

Candace Decker, MPH

Illinois State Board of Education
Principal Consultant
Springfield, IL



Wellness Team

- ISBE's newly formed wellness team consists of 3 consultants working in the Regulatory Support and Wellness Division. This team brings together expertise from many different areas to ensure that all two million of our students are healthy and ready to learn.

Questions

- During the live presentation, if you have questions please type them into the question box.
- Questions will be compiled into FAQ document and sent out with the power point to participants.
- The Power Point and Recording of the webinar will be available on ISBE's School Health Webpage after September 6, 2019.



Today's Objectives

- Participants will be able to describe:
 - School health tasks that are required to be completed each year in Illinois schools.
 - The role of health personnel.
 - The most recent changes in school health under the jurisdiction of the Illinois State Board of Education.
 - Student health data reporting requirements.



ISBE Vision & Mission

Vision:

Illinois is a state of whole, healthy children nested in whole, healthy systems supporting communities wherein all people are socially and economically secure.

Mission:

Provide leadership and resources to achieve excellence across all Illinois districts by engaging legislators, school administrators, teachers, students, parents, families, and other stakeholders in formulating and advocating for policies that enhance education, empower districts, and ensure equitable outcomes for all students.

ISBE Goals

Goals:

Every child in each public school system in the State of Illinois deserves to attend a system wherein...

- All kindergartners are assessed for readiness.
- Ninety percent or more of third-grade students are reading at or above grade level.
- Ninety percent or more of fifth-grade students meet or exceed expectations in mathematics.
- Ninety percent or more of ninth-grade students are on track to graduate with their cohort.
- Ninety percent or more of students graduate from high school ready for college and career.
- All students are supported by highly prepared and effective teachers and school leaders.
- **Every school offers a safe and healthy learning environment for all students.**



Regulatory Topics

Rebecca Doran, MSN, RN, PEL/School Nurse, NCSN



Illinois
State Board of
Education

School Code and Related Rules:

What Governs Your Role in Schools

1. School Code, ILCS

<http://www.ilga.gov/legislation/ilcs/ilcs5.asp?ActID=1005>

2. Related Rules, Administrative Code

<https://www.isbe.net/Pages/Rules.aspx>

3. Nurse Practice Act (applicable to school nurses)

<http://www.ilga.gov/legislation/ilcs/ilcs3.asp?ActID=1312&ChapterID=24>

4. District Policy

School Health related legislation

Safe & Healthy Climate		
BILL/LAW	Action; related to	Effective date
PA 101-0370	Amends Cannabis Control Act	Effective
PA 101-0050	Seizure Smart School Act	Effective July 1, 2020
HB 1561 Passed both Houses and sent to Governor for signing (Similar to 3643 which was sent to the rules committee)	Amends Freedom of Information Act	Effective Immediately
HB 3086 Passed both Houses and sent to Governor for signing	Amends School Code; anger management classes for at-risk students;	Effective Immediately
PA 101-0205	Amends School Code; allows self-administration of medication when a student has a 504 plan and other requirements are met	Effective January 1, 2020
PA 101-0413 (Identical to HB2609 which was sent to rules committee)	Amends School Code; Subject to appropriation-School safety & security grants	Effective January 1, 2020
PA 101-0350	Amends School Code; Inservice training Mental illness & suicidal behavior; may utilize Mental Health First Aid Training	Effective January 1, 2020



Add'l. School Health Related legislation

BILL/LAW	Action; related to	Effective date
SB 1239 Passed both Houses sent to Governor for signing	Amends the Abused and Neglected Child Reporting Act; report received by DCFS alleging the abuse or neglect of a child referred to Law Enforcement and State's Att'ny	Effective January 1, 2020
SB 1778 Passed both Houses sent to Governor for signing	Amends the Abused and Neglected Child Reporting Act; Removes the list of mandated reports under the Act and instead lists several categories of professionals required to report. suspected child abuse and neglect to DCFS	Effective January 1, 2020
HB 0022 (sent back to rules committee)	Applies to Chicago Bd of Ed to establish a school nurse pilot program	
HB 0208 (sent back to rules committee)	Cannabis Instruction	
HB 2850 (sent back to rules committee)	Includes a licensed chiropractic physician to the provision of protocol during an interscholastic athletic activity	
HB 3432 (sent back to rules committee)	Employee trauma training including an on-site trauma kit at each school for bleeding emergencies	



District Policy & Procedures

District Policy

- Board Policy
 - Student Handbook
 - Medication Policy
 - Undesignated Medication Policies
- Employee Policy
 - Employee Handbook

Procedure

- How policy is implemented
- Health Office Procedures
- Off school grounds meeting policy requirements
- Training requirements



Illinois Law and Health Services

- School Code: (105 ILCS 5/10-22.21b)
 - Chapter 122, Sec. 10-22.21b (medications) based on Public Act 91-0719
 - Public Act 90-0789 requires schools to adopt a policy on medications to students and parents be notified annually.
- 105 ILCS 5/22-30 Self administration and self-carry of asthma medication and epinephrine auto-injectors; administration of an opioid antagonist; asthma episode emergency response protocol (updated 2019 undesignated asthma medication public comment period closed on 8/19/19)
- 105 ILCS 5/24-5 Physical fitness and professional growth (employee physical exam, other tests)
- 105 ILCS 5/27-8.1 Health examinations and immunizations (relevant Public Health Code Section 665 & Communicable Disease Code Section 690)
- School code: Sec. 3-11. the teacher's institutes shall include instruction on prevalent student chronic health conditions.
- Public Act 90-0789 requires schools to adopt a policy on medications to students and parents be notified annually.



Administrative Rules

- Administrative Code:
 - ISBE rule 1.530: Health Services (policy and procedures relative to injury or sudden illness of students and staff)
 - ISBE rule 1.540: Use of undesignated epinephrine and naloxone
 - ISBE rule 1.760: Standards for Student Support Personnel (sections b-h, school nurse)
 - ISBE rule 226.800: Personnel required to be qualified (nursing interventions)
 - ISBE rule 226.160: Medical review: performance of health evaluation for student for IEP



Compassionate Use of Medical Cannabis

- “Ashley’s Law” 2019 updates
- ISBE is collaborating with other state agencies around recent updates to the law information will be forthcoming
- For guidance:
 - ✓ Consult local school administration & district legal counsel



Undesignated Medications

- In addition to student specific medications, schools may (are not required to) maintain:
 - “stock drugs” limited to:
 - Epinephrine for severe allergic reactions
 - Naloxone for overdose to an opioid drug
 - Asthma medication or similar drug
 - in inhaler or nebulizer delivery devices;
 - Allows, but does not require, schools to stock albuterol or similar quick acting bronchodilator for severe asthma
 - Reports on use of Undesignated Medications are available on [ISBE website](#), under “medications”.

Undesignated Epinephrine

- Authorizes, *does not require*, schools to stock undesignated epinephrine
- Allows administration of undesignated epinephrine to any person not previously known to have severe allergy/prescription
- Requires a [report](#) to ISBE within three days of the administration of undesignated epinephrine (email to epinephrine@isbe.net)
- Law also requires districts to notify ISBE upon adoption or revision of policy
- State report on usage and availability found on ISBE's school health page
- Private (contracted) school bus transportation companies are also allowed to carry and use
- Law also expands the locations to any public place (i.e. childcare facilities, restaurants)
- Pharmaceutical companies may provide supply to schools
- Guidance is at: <https://www.isbe.net/Documents/guidance-15-02-self-admin-epi.pdf>



Undesignated Opioid Antagonist: “Narcan” or “Naloxone”

- Authorizes, *does not require*, schools to stock undesignated opioid antagonist
- Allows administration of undesignated opioid antagonist to any person suspected or appearing to be experiencing an overdose of opioid
- Requires a [report](#) to ISBE within three days of the administration of undesignated epinephrine (email to opioid@isbe.net)
- State report on usage and availability found on ISBE’s school health page
- Check with your local health department or EMS regarding dose and prescriber for schools

Undesignated Asthma Medication

Undesignated option NEW

- Authorizes, *does not require*, schools to stock undesignated Asthma Medication
- Allows administration of undesignated asthma medication to person believed to be experiencing respiratory distress not previously known to have asthma
- Requires a [report](#) to ISBE within three days of the administration of undesignated epinephrine (email to asthmamed@isbe.net)
- Guidance is pending as public comment period ended August 19, 2019

Already in Place

- Asthma Action Plan district and school (including charter and nonpublic) request from parent
- Model asthma emergency response protocol (on ISBE website)
- Requires school staff training every 2 years



Ann Marie's Law: Youth Suicide Awareness and Prevention

- Public Act 099-0443: Schools must review/revise existing suicide prevention and awareness policy, or create one
- A youth suicide awareness and prevention policy is required pursuant to 105 ILCS 5/2-3.163, amended by Public Act 099-0443.
- **Model Suicide Prevention Policy Available to All Districts in Illinois**
 - The Illinois State Board of Education and the Illinois Association of School Boards (IASB) collaborated on a model policy available to all school districts in Illinois.
- [Illinois Youth Suicide Prevention Toolkit](#)
- For more information, please visit www.iasb.com/law/sdprevention.cfm.



Erin's Law (P.A. 97-1147)

- Law amends School Code and the Critical Health Problems and Comprehensive Health Education Act (105 ILCS 110/3).
- All public schools must implement an age-appropriate child sexual abuse prevention and awareness program with students in grades pre-kindergarten through grade 12.

Dental examination required at 9th grade

- HB 4908 became Public Act [100-0829](#) on August 13, 2018
- Effective Date Jan. 1, 2019
- Refer to IDPH webinar aired Aug. 21, 2019 for further information
- Collect 9th grade dental exams for May 15, 2020 reporting
 - Roll out year ISBE is aware



Care of Students with Diabetes Act

P.A. 96-1485

- Schools enrolling a student with diabetes
 - (Can be diagnosed at anytime)
- Staff training on general signs and symptoms & emergency care
- Allows student to self-manage and self-carry/-administer meds and treatments if needed
- Recognizes that a school nurse (RN) is best for care of student with diabetes
- Requires a 504 plan
- Authorizes a DCA (delegated care aide)
 - Training for the specific student is to be individualized, according to the student's DMMP, with parent and student
 - Initial instruction by CDE or MD
 - School nurse oversight is inferred
 - Staff must volunteer, not be required to accept assignment as DCA



Student and Staff Privacy

- FERPA for students
 - Exceptions for serious and imminent threats to health and safety
 - Required release related to vaccine compliance
- HIPAA for staff:
 - Definition of HIPAA covered entity
 - Release of information related to outbreaks of communicable disease

Student Health Requirements



Required for Entry to School: (refer to IDPH webinar of 8/21 for details)

- Immunizations, physical examination, dental examination, vision examination
- Student with IEP or a disability must be in compliance or have a waiver (same as general education)
- Homeless: special protections against exclusion for students who qualify as homeless status



Compliance with Health Requirements

- Find out your school district's exclusion **policy** (not practice).
 - Compliance with immunizations and physical examinations prior to Oct. 15th
 - Compliance with eye examination prior to Oct. 15th
 - Dental Exam prior to May 15th
- Verify that a completion form or waiver is in the child's record.
- Notify and involve principal / school administrator on names of students whose records are incomplete
- Non-compliance with physical exam, immunizations exclusion from school attendance
- Non-compliance with eye exam or dental exam report card may be held



Exceptions to Emergency Treatment

- Do Not Resuscitate (DNR) and similar orders
 - DNR is most common layperson term.
 - Physician Orders for Life Sustaining Treatment (POLST) is a current term.
 - If a student has a POLST or similar order, school or district IEP or 504 team should be convened.
 - Follow the orders to the letter; a recent lawsuit found a district at fault for saving the life of a student with DNR order due to costs involved.

Professional Educator License School Nurse (PEL-RN)

- **Recent changes around the Test of Basic Skills**
- **Four programs offer graduate level course work**
 - **School Nurse Certificate**
 - **DePaul University**
 - **Lewis University**
 - **Illinois State University**
 - **University of Illinois, Chicago**



Activities Reserved for Nurse

- **Illinois Administrative Rule, Schools, Part 1.760** <http://www.ilga.gov/commission/jcar/admincode/023/023000010G07600R.html>

Item h): Duty to provide registered professional nursing services shall not be included in the job description of any other school staff who does not hold nursing license

- **Illinois Administrative Rule, School, Special Education Part 800 k (2)A** <http://www.ilga.gov/commission/jcar/admincode/023/023002260I08000R.html>

Nurse Practice Act [225 ILCS 65] and rules governing that Act (68 Ill. Adm. Code 1300),

including any procedures and duties requiring a medical order (e.g., tube feedings, catheterizations, administration of medications, tracheal suctioning, tube insertions, blood draws, dressing changes), except as may be otherwise authorized under State law



Caring for Students that may have Greater Needs

Adenike Sosina, MPH, CHES



Illinois
State Board of
Education

Evaluation for Special Education - Health

- Federal IDEA requirement to fully evaluate students for determining eligibility for special education services
- Requirement is not new, dates to the 1970s
- ISBE Rule 226.160 defines the medical review evaluation process
- Components of Medical Review (IAC 226.160) : Parts 1-4, assessment and data collection; Part 5, recommendations, goals, evaluation
<http://ilga.gov/commission/jcar/admincode/023/023002260B01600R.html>
- Personnel qualified to perform Medical Review
 - Parts 1-4: APN, RN with PEL, with designation, or with baccalaureate; and MD
 - Part 5: RN with PEL endorsement or designation **only**
- Credentials are searchable on the Educator Licensure Information System

District IEP Medical Review

- District or Special Education Cooperative
 - Have person qualified to perform all five components of a Medical Review
 - Engage in an effort to recruit and hire a registered nurse who holds the PEL endorsement in school nursing.
 - posting for a position that requires the PEL endorsement must meet the requirements of the School Code (105 ILCS 5/21B-25), which stipulates that the “holder of such an endorsement is entitled to all of the rights and privileges granted holders of any other Professional Educator License, including teacher benefits, compensation, and working conditions.”
 - Follow the process explained on the Special Education and Mental Health tab on the [School Health Issues webpage](#).

A Team Approach to Individualize an Education Plan

- Assessment: Interdisciplinary Team that conducts a complete and individualized assessment
- Planning:
 - Students' needs in the Present Level of Academic Achievement & Functional Performance (PLAAFP) statement
 - Write student goals related to health and academics.
 - Assign specific services and minutes.
 - Review qualifications and level of credentials of persons to provide any identified services.
 - Write nursing goals in IHP or nursing care plan.
- Evaluate plan:
 - Monitor outcomes, student goal achievements, nursing goals.



Transition Plans

- Federal law requires transition plans by age 16 years
- Illinois requires that transition plans in effect on or before a student age 14 ½
- Goals and services in the area of independent living skills are required
 - Postsecondary goals and services in areas of training, education and employment
- IEPs and health needs include written transition plan with health goal
 - Encourage independence to the greatest extent possible



Services for Students who are Homeless

- **The McKinney-Vento Homeless Education Act and The Every Student Succeeds Act** requires...
 - Immediate enrollment of homeless students
 - Referral of parent or guardian to the LEA homeless liaison
- LEA provides support/assistance to homeless children in...
 - Obtaining immunizations or records
 - Enrolling in health insurance
 - Arranging appointments for physicals and immunizations
 - Providing transportation if necessary
- Work to “remedy the barriers” that have prevented them from obtaining vaccinations and physical exams.



Services for Students who are Homeless *(continued)*

- Minor Unaccompanied Youth Status for Health Care Form.
- Exemption is not permanent.
- If, after exhausting all efforts, the parent fails to keep appointments or complete paperwork such as that needed for insurance coverage, the child may be excluded if there is sufficient documentation.
- Document every piece of communication, every meeting, every action to remove barriers!
- Direct questions to Vicki Hodges at ISBE: vhodges@isbe.net



Home or Hospital Instruction

- Guidance – home-hospital instruction and reimbursement, Rule 226.300
 - [Medical certification form](#)
 - Signatures: MD “licensed to practice medicine in all its branches” or APRN (Advanced Practice Registered Nurse) or Physician Assistant (P.A.)
 - Date of signature
 - District does not have to accept hospital tutor
 - Services can be provided by a district tutor
 - No separate funding
 - [Home/hospital instruction for students Q&A](#)



Working with children who are not immunized

- School must keep a Susceptibility List.
- Notification according to IDPH during an outbreak situation they must be excluded.
- If physician requests school instruction for that student:
 - Check with your special education director & ISBE homebound instruction consultants.
 - A district would only have to provide homebound tutoring to a child enrolled in special education who is excluded if they extended that service to a child enrolled in general education.



Student Health Data and Reporting

Candace Decker, MPH



Illinois
State Board of
Education

Student Health Information and School Records - Permanent

- "Health Record" means medical documentation necessary for enrollment and proof of having certain examinations, as may be required under [Section 27-8.1](#) of the School Code.



Student Health Information and School Records - Temporary

- "Health-related Information" means current documentation of a student's health information, not otherwise governed by the [Mental Health and Developmental Disabilities Confidentiality Act \[740 ILCS 110\]](#) or other privacy laws, which includes identifying information, health history, results of mandated testing and screenings, medication dispensation records and logs (e.g., glucose readings), long-term medications administered during school hours, documentation regarding a student athlete's and his or her parents' acknowledgement of the district's concussion policy, and other health-related information that is relevant to school participation (e.g., nursing services plan, failed screenings, yearly sports physical exams, interim health histories for sports).



Students attending out-of-district

- Both districts should have copy of required health documents (physical exam, immunizations, eye exam, & dental exam)
 - Original should be maintained by the child's home district (district of residence).
 - A copy should be kept by the receiving district
 - Review for susceptibility purposes

Reporting

- Reports to IDPH
 - Vision and Hearing screenings
 - IDPH session contains more information
- Reports to ISBE
 - Immunizations. As mandated by [Section 5/27-8.1](#) of the School Code, immunization/health examination data must be submitted for **all grades PreK- 12**
 - Physical examinations
 - Eye examinations
 - Dental examinations
 - Physical Fitness Assessments



Reporting (*continued*)

- On or before December 1 of each year, schools must make publicly available the immunization data they are required to submit [105 ILCS 5/27-8.1](#)
- ISBE and Regional Offices of Education perform monitoring visits
- ISBE data and statistics website includes compliance, noncompliance, and “not reporting,” schools
- School Code: Local school authorities shall monitor immunization schedules to assure their completion.



Reporting Dates to Remember

ISBE Student Health Data Important Dates

Immunization/ Health Examination

Collection cut-off date	As of October 15, 2019 or an earlier exclusion date set by the district
IWAS system opens for data entry	September 2, 2019
IWAS system deadline for submission	November 15, 2019, at 11:59 PM

Eye Examination

Collection cut-off date	As of October 15, 2019
IWAS system opens for data entry	October 16, 2019
IWAS system deadline for submission	July 1, 2020, at 11:59 PM

Dental Examination

Collection cut-off date	As of May 15, 2020
IWAS system opens for data entry	May 16, 2020
IWAS system deadline for submission	July 1, 2020, at 11:59 PM

Physical Fitness Assessment

Collection cut-off date	Assessment to be conducted in 2nd semester, collection dates will vary by school
IWAS system opens for data entry	April 17, 2020
IWAS system deadline for submission	July 1, 2020, at 11:59 PM












IWAS

- Talk with administration to determine who will be responsible for reporting the student health data
- If you will be responsible for entering in the data, you will establish an IWAS account
 - Visit Isbe.net
 - System Quick Links
 - IWAS: ISBE Web Application Security
 - Sign up now

I established my IWAS account, now what?

- System Listing
 - Find systems that you will need access to

Annual			
Student Health Data - Dental			 Authorized
Student Health Data - Physical Fitness			 Authorized
Student Health Data - Vision			 Authorized

Legend:  : System Description - Detailed  : Due Dates  : Profile

[Want to Signup for Other Systems?](#)

Copyright © 2019 Illinois State Board of Education

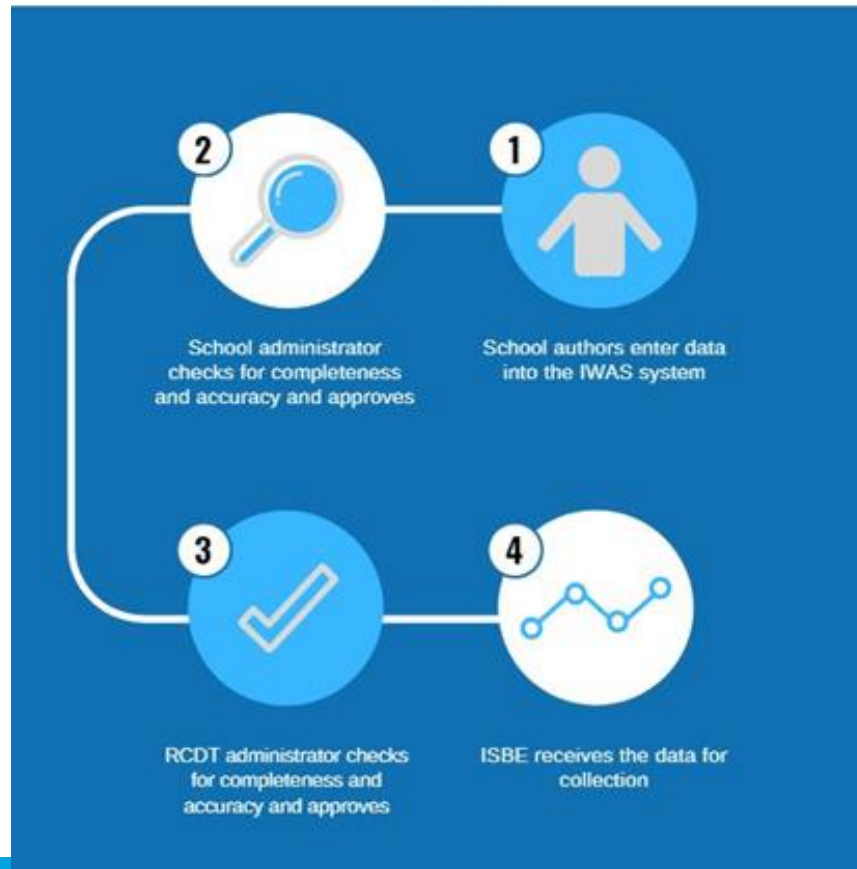


IWAS Account Access

Access Level	
School document author	School data entry persons
School administrator	School administrator/ Principal
District document author	RCDT personnel who enter data at RCDT level for subordinate entities
RCDT administrator	RCDT Administrator/Superintendent/Principal or designee responsible for approving data submission to ISBE
ISBE administrator	ISBE program support personnel



IWAS Data Entry



IWAS immunization worksheet

- The IWAS worksheet with two printable versions (8.5 x 11 or 11x17)
- The completion of the worksheet is to assist in the hand entering data in IWAS and not for submission alone.

Immunization Data Entry Worksheet								School Year: 2016-2017
<i>In the green box under "Total Number of Students in the Selected Grade," enter the total number of your students in that grade. Then, use each category to record and identify how many students have or have not been immunized. The numbers will total and check against the number you entered under "Total Number of Students in the Selected Grade." If the numbers match, the validation column will say "Good." If the numbers do not match, the column will say "Error."</i>								
Disease Category	Protected and in Compliance	Religious Objection	Medical Reason or Objection	Approved Schedule	Homeless Education Assistance/McKinney Vento Act	Unprotected and in Noncompliance (includes transfer students without records)	Total Number of Students in the Selected Grade	Validation
Pre-kindergarten								
Polio							0.00	Good
DTP/D TaP/Td							0.00	Good
Measles							0.00	Good
Rubella							0.00	Good
Mumps							0.00	Good
Hepatitis B							0.00	Good
Hib							0.00	Good
Varicella/Chickenpox							0.00	Good
Pneumococcal							0.00	Good
Kindergarten								
Polio							0.00	Good
DTP/D TaP/Td							0.00	Good
Measles							0.00	Good
Rubella							0.00	Good
Mumps							0.00	Good
Varicella/Chickenpox							0.00	Good
Grade 1								
Polio							0.00	Good
DTP/D TaP/Td							0.00	Good



When can we start entering data into IWAS?

- IWAS system for Student Health Immunization opens on Monday, September 2, 2019.
- As mandated by Section 5/27-9.1 of the School Code, immunization/health examination data must be submitted for **all grades PreK- 12**



IWAS help

- Questions regarding reporting of school health data should go to Regulatory Support and Wellness Division 217-782-5270
- Questions regarding IWAS troubleshooting should go to the IWAS Help Desk 217-558-3600



References

In addition to ISBE resources and the School Code, these resources were used in preparation of this session:

- Centers for Disease Control,

<https://www.cdc.gov/healthyyouth/wsc/moel.htm>

- Illinois High School Association

https://www.ihsa.org/documents/forms/current/elg_rules_lg.pdf

- Illinois Department of Financial and Professional Regulation

<https://www.idfpr.com/profs/nursing.asp>

- Illinois General Assembly, <http://www.ilga.gov>



Thank you!

- Thank you for attending today's webinar!
- A couple of reminders:
 - Recorded webinar will be available on ISBE's School Health page after 9/6/19
 - FAQ document will be provided by mid-September
 - Continuing Education credit requires submission of an evaluation and will be e-mailed to you approximately 2 weeks after attendance
 - Evaluation link: <https://www.surveymonkey.com/r/VDYP6MP>
 - Your feedback is appreciated!



Contact Information

ISBE Center for Safe and Healthy Climate

Regulatory Support and Wellness Division, 217-782-5270

Rebecca Doran, Rdoran@isbe.net

Candace Decker, Cdecker@isbe.net

Adenike Sosina, Asosina@isbe.net

Nurses (RN or LPN) should send their questions on any school nursing topics to schoolnurse@isbe.net.

Email alerts and news items

- To receive email alerts from ISBE school nurse consultants: send an email with name, nurse credentials, to schoolnurse@isbe.net
- To receive Superintendent Weekly Message, please contact ISBE's Office of Communications at (217) 782-4648 or weeklymessage@isbe.net.