



Recipe for Success

SNP BACK TO SCHOOL CONFERENCE

Bring Suppers and Snacks to Schools With CACFP (Child And Adult Care Food Program)

Shaista Shaikh, MBA

Principal Consultant: CACFP

Nutrition Department

IL State Board of Education

cnp@isbe.net



Agenda

Overview of CACFP (Child and Adult Care Food Program)

- Hierarchy
- Participants/Sponsors



Eligibility Requirements



Meal Service Requirements



Record Keeping



Streamlined Process

- https://www.isbe.net/Documents/cacfp_bpi_step1.pdf



CACFP

USDA

<https://www.usda.gov/>

ISBE Nutrition

<https://www.isbe.net/Pages/Nutrition-and-Wellness.aspx>

One site
Sponsor

Multi-site
Sponsor



CACFP Participants

Rec
Centers

Schools



Park
Districts

Libraries



Community
Centers

Religious
Organizations





Site Requirement

https://www.isbe.net/Documents/pre-k_fs.pdf

Operating Days

Child Eligibility

Meal
Reimbursement
Rate



Pre-School

Public school buildings

In conjunction with school calendar

3-5 years of age

Monitoring Visits

Based on Childs categorical eligibility
Free/Reduced/Paid



Pre-School Comingling



- Single-menu flexibility when pre-K and K-5 students are in the same service area at the same time
- May choose to follow the grade appropriate meal patterns or K-5 meal patterns for both groups
- Encourage schools to serve grade appropriate meals



FY24 Reimbursement \$ Rates

Child and Adult Care Food Program Reimbursement Rates (U.S. dollars) Effective from July 1, 2023 - June 30, 2024			
Centers	Breakfast	Lunch/Supper	Snack
Paid	0.38	0.40	0.10
Reduced Price	1.98	3.85	0.58
Free	2.28	4.25	1.17

These rates do not include the value of USDA foods or cash-in-lieu of USDA foods. **This cash-in-lieu commodities rate of 29.50 cents** is additional assistance for CACFP participants and is added to the reimbursement rate for every lunch and supper served under CACFP.

<https://www.isbe.net/Pages/Nutrition-and-Wellness-Child-Care-Institutions.aspx>



Pre-School FAQs



1. If a 5-year-old student is in preschool, which meal pattern does the school follow for that student?
2. If a school serves Pre-K students and K-5 students in the same service area at the same time, may the school opt to serve one meal pattern to all students?
3. If a school serves preschoolers lunch (under NSLP) and a snack through CACFP, can juice be served at both lunch and snack?



AT-RISK AFTER SCHOOL



Site
Requirements

https://www.isbe.net/Documents/at_risk_fs.pdf

Operating Days

Child Eligibility

Meal
Reimbursement
Rate



CACFP At-Risk Afterschool

- Over 20 Million Children leave school not knowing if there is supper at home.



- **BENEFITS OF PARTICIPATION –**

- a. Increased nutrition and decreased hunger
- b. Can serve meals afterschool, weekends and holidays
- c. Increased interest in enrichment activities
- d. Better focused and improved performance
- e. Increased revenue

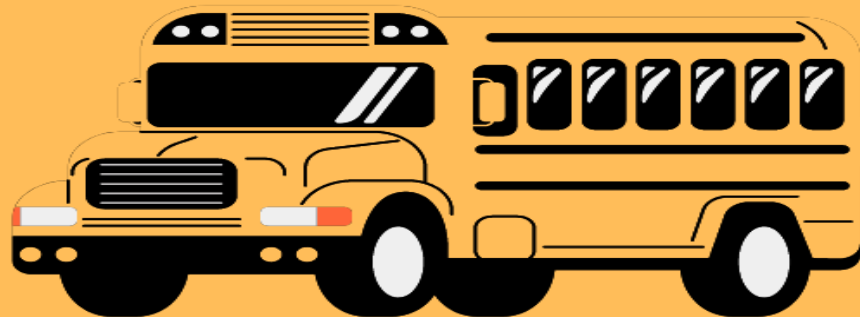
<https://www.cacfp.org/afterschool-meals/>



Eligibility Requirements At-Risk Programs



**AT-RISK AFTER
SCHOOL**





Public school
buildings/Monitoring
Visits

In conjunction with
school calendar- After
school day ends

Through age 18 (start of
school year)

Free Reimbursement Rate
for Supper and Snacks



Area Eligibility

At-Risk Afterschool program sites must be in attendance area of a public school where at least 50% of enrolled students qualify for free or reduced-price meals. – Valid for 5 years !

At-Risk Afterschool Verification Document:

1. Record the address for the At-Risk After-School Snack/Supper Program below.					
Street Address: _____					
City: _____		Zip Code: _____			
2. Call the school district office or school; provide the phone number. _____					
3. Name and title of school employee providing the information.					
Employee Name: _____			Title: _____		
4. Ask school employee where children would go to school if living at the address above (#1). Record the names and types (elementary, middle, high) of schools given to you by the school employee.					
<input type="checkbox"/>	_____	_____	_____	_____	_____
	Name of School	Street Address	City	State	Zip Code
<input type="checkbox"/>	_____	_____	_____	_____	_____
	Name of School	Street Address	City	State	Zip Code
<input type="checkbox"/>	_____	_____	_____	_____	_____
	Name of School	Street Address	City	State	Zip Code





At-Risk Program Eligibility



Programs must offer regularly scheduled and supervised educational or enrichment activities

Tutoring

School Clubs

Fine Arts

Homework
Help

Mentoring

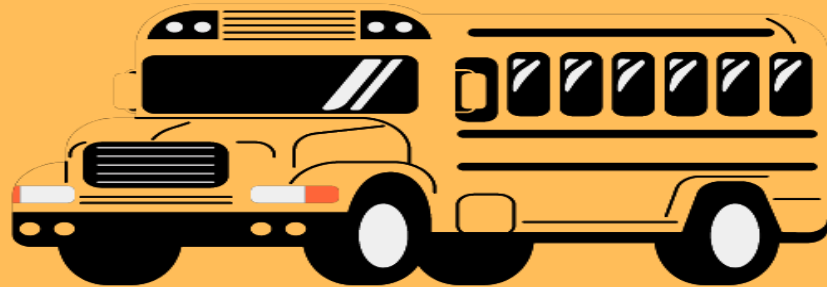
Athletics (open
to all)

Arts and crafts

Meal Service Requirements At-Risk Programs



**AT-RISK AFTER
SCHOOL**





Meal Components & Requirements

Milk

Fruit

Vegetable

Meat or Meat
Alternate

Grains/
Breads

Lunch/Supper: Must serve all five components for a reimbursable meal.

Snack: required portion of two (2) different Components

https://www.isbe.net/Documents/Meal-Pattern_1-12_13-18.pdf





Reimbursement Rates \$

CACFP At-Risk After-School Meals

Provides reimbursements for snacks and meals served in eligible after-school programs at free rate!



**Child and Adult Care Food Program
Reimbursement Rates (U.S. dollars)
Effective from July 1, 2023 - June 30, 2024**

Meals	Breakfast	Lunch/ Supper	Snack
Free Rates	2.28	4.25	1.17



Maintaining Records





Record Keeping Requirements

Pre-School Records:

- Program operators must show they are meeting the meal pattern requirements by keeping records of menus
- State agencies may determine other types of acceptable recordkeeping documents required to demonstrate compliance
- FNS encourages state agencies to avoid additional paperwork



At-risk afterschool programs must maintain:

- Daily attendance rosters, sign-in sheets, or other records of daily attendance
- Records of the number of meals and snacks prepared or delivered for each meal service
- The number of snacks and meals served
- Menus for each meal and snack service
- Any additional records required by the State agency

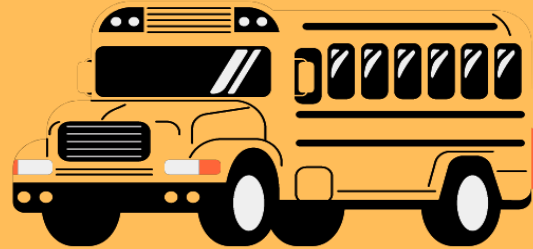


Why participate ?

21



**AT-RISK AFTER
SCHOOL**





Streamlined Requirements for Schools

Easy

Transition

Between

Child
Nutrition
Programs





Streamlined
Application

Familiarity
with Federal
programs

CACFP or NSLP
Meal Pattern

Procurement



HOW CAN YOUR ORGANIZATION PARTICIPATE?



CONTACT



Contact your State agency to see if your afterschool program can serve meals and snacks through CACFP. They will help to see if you are located in an eligible area.

PROMOTE



Promote CACFP At-Risk to your community.
Put up flyers and door hangers with information on afterschool programs to help families find centers that are nearby.



Volunteer to serve food or organize activities for other afterschool programs participating in CACFP.



Expand from Summer Meals! If you are a Summer Meals provider, consider applying to CACFP to serve meals and snacks during the school year through an afterschool program. Contact your State agency for more information.

CACFP Resources/Training Tools

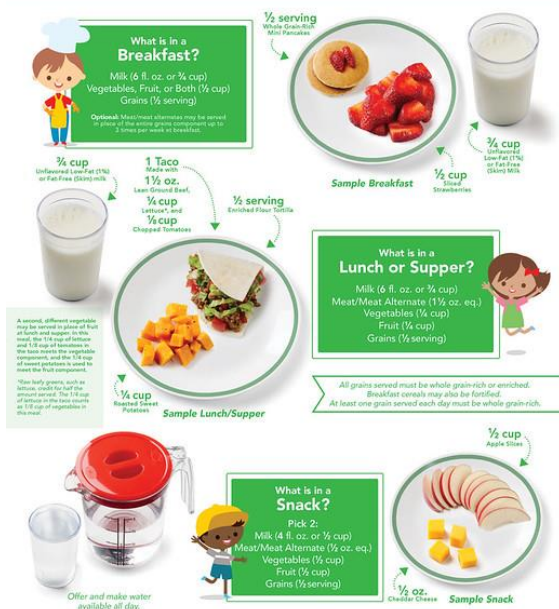




United States Department of Agriculture

Serve Tasty and Healthy Foods in the Child and Adult Care Food Program (CACFP)

Sample Meals for Children Ages 3-5

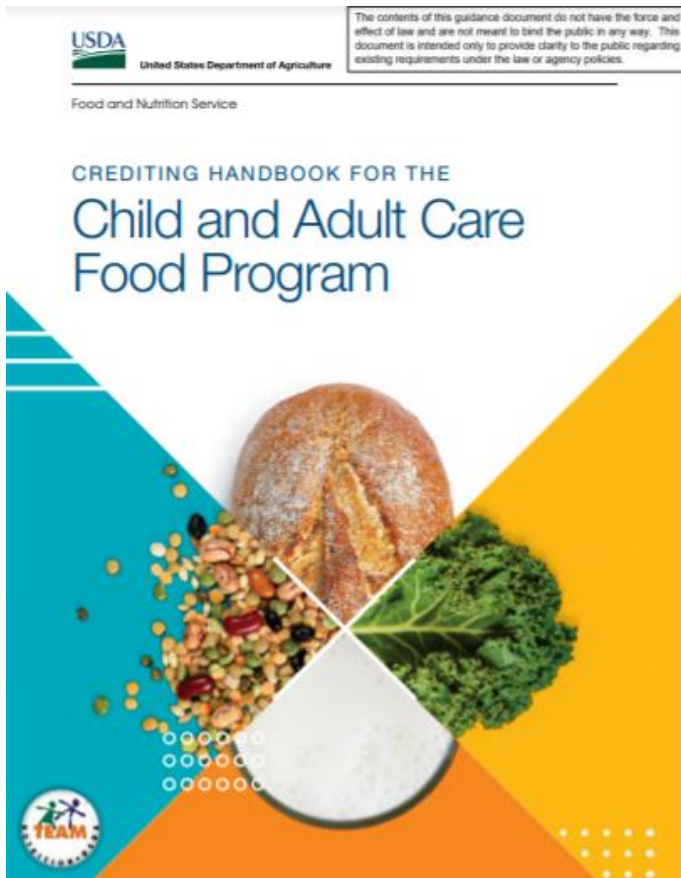


Food and Nutrition Service
FNS-668
August 2017
USDA is an equal opportunity
provider, employer, and lender.



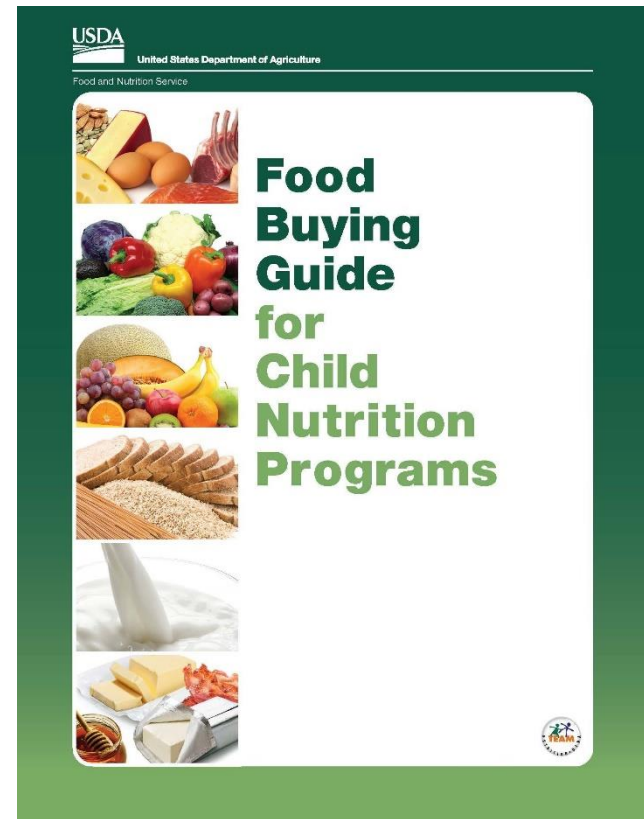
<https://www.fns.usda.gov/team-nutrition>

<https://www.fns.usda.gov/tn/halftime-cacfp-thirty-thursdays-training-webinar-series>



The CACFP Crediting Handbook has detailed information on meal patterns and allowable foods.

<https://www.fns.usda.gov/tn/crediting-handbook-child-and-adult-care-food-program>



<https://www.fns.usda.gov/tn/food-buying-guide-for-child-nutrition-programs>



ISBE NUTRITION/CACFP

<https://www.isbe.net/Pages/Nutrition-and-Wellness.aspx>

cnf@isbe.net

217-782-2491

Any Questions ?



**NUTRITION DEPARTMENT
IL STATE BOARD OF EDUCATION**

CNP@ISBE.NET

[HTTPS://WWW.ISBE.NET/](https://www.isbe.net/)

THANK YOU FOR YOUR TIME !