



Evidenced Based Funding (EBF)

105 ILCS 5/18-8.15



Welcome and Introductions

- Presenters
 - Patrick Payne
 - Keith Goeckner
 - Jason Hall
 - Adam Lowery
 - Lindsay Derosa



Agenda

- School Survey
- What is EBF
- Enrollment Types
- Calculating Final % of Adequacy
- Average Student Enrollment (ASE)
- Regional Offices of Education Enrollment
- Enrollment Date Notice
- Converting to full day Kindergarten
- Deadline
- QA



Polls

1. Please describe your district's current situation:

A. All staff are in a non-work status.

B. Teachers are in non-work status. All other personnel are expected to come into the schools/admin building or are working remote.

C. A very small number of administrators/staff are in work status (e.g. essential employees) all others are in non-work status.

D. All personnel are in working status and are expected to report to work or are working



Polls

2. Can “office workers” in your district in work status work from home?
- A. No – the district doesn’t have that capability
 - B. No – the district has the capability but they are required to physically report to work
 - C. No – I don’t know why they cannot
 - D. Yes – if they have the capability and choose to (i.e. they have a device, internet access, and remote access).
 - E. Yes – they are **REQUIRED** to work remotely. Only janitors, food service, etc. are required to physically report.



Polls

3. If your district allows/requires working from home please describe your capability to meet ISBE's data obligations.

- A. We have full capability to access data and manipulate files and submit via IWAS.
- B. We have partial capability to access data and manipulate files. We have simple tools like Microsoft/google but not access to advanced tools like SAS, SPSS, SQL, etc. or our local SIS (PowerSchool, Skyward, etc.).
- C. We only have basic communication tools (email and phone) and no capacity to manipulate files or submit info to IWAS.



What is EBF?

EBF is a formula that Illinois using for allocating school funding. It replaced General State Aid, Special Education – Personnel, Special Education – Funding for Children Requiring Special Education Services, Special Education – Summer School and English Learner Education.



Enrollment Types

Enrollment Counts for School Year 2020

Superintendent Verification

- Fall Enrollment Counts Confirmation is not available at this time.
- Please review and confirm the Spring Enrollment Counts for the current school year!

Enrollment Type	Enrollment Period	Special Ed Pre K	Kindergarten Half Day	Kindergarten	1st	2nd	3rd	4th	5th	6th	7th	8th	9th	10th	11th	12th	Total
i Home Student Enrollment	10/1/2019	--	--	82	83	100	97	81	98	102	108	102	100	122	112	120	1307
i Home Student Enrollment	03/1/2020	--	--	85	87	101	97	82	99	101	110	103	105	120	108	118	1316
i Students from Deactivated Schools being Served by Other Districts	--	--	--	--	--	--	--	--	--	--	--	--	--	--	--	--	--
i Students Served by State Authorized Charter Schools	--	--	--	--	--	--	--	--	--	--	--	--	--	--	--	--	--
i English Learners (PreK-12)	--	--	--	--	--	--	--	--	--	--	--	--	--	--	--	--	--
i Special Education Pre-K Students	10/1/2019	9	--	--	--	--	--	--	--	--	--	--	--	--	--	--	9
i Special Education Pre-K Students	03/1/2020	15	--	--	--	--	--	--	--	--	--	--	--	--	--	--	15
i Students Served from Deactivated Schools	--	--	--	--	--	--	--	--	--	--	--	--	--	--	--	--	--
i Special Education Youth in Care	10/1/2019	--	--	--	--	2	--	--	--	--	--	--	--	--	--	--	2
i Students Served by State Funded Schools	--	--	--	--	--	--	--	--	--	--	--	--	--	--	--	--	--
i Tuition-In Students	--	--	--	--	--	--	--	--	--	--	--	--	--	--	--	--	--
i Youth In Care in County Detention Centers	--	--	--	--	--	--	--	--	--	--	--	--	--	--	--	--	--
i Youth In Care in Group Homes	--	--	--	--	--	--	--	--	--	--	--	--	--	--	--	--	--

[Download a List of Possible Special Education Youth-in-Care Students](#)



Enrollment Type

The Home Student Enrollment is the basis for Average Student Enrollment and is a count of students who are enrolled in the Student Information System (SIS) by home district.

- What is included
 - Students who have an enrollment in SIS in grades Kindergarten through 12th.
 - Kindergarten students with a percent of day attended (PDA) of less than 75% in SIS were considered 1/2-day kindergarteners.
 - For the March 1st count only, students with a serving school that is part of a Regional Office of Education (ROE) and have a percent of day attended (PDA) of 100% in SIS, will be counted as the ROE as the home district instead of the public school district.
- What is excluded
 - Private school or Home-schooled students who have enrolled with a public school for IEP services will be excluded from the Home Student Enrollment. This is determined by the IEP-Student Tracking and Reporting System (I-Star) if the student has a fund code of L or P.
 - Students in a grade level of Pre-Kindergarten or Birth to Three.



Enrollment Type

The Students from Deactivated Schools being Served by Other Districts is a count of students who are being served in a different school district because the school that they would regularly attend has been deactivated. This count is added to the Home student enrollment count for Average Student Enrollment calculations

- What is included
 - Any student who is counted in the Home School Enrollment, and has been flagged in SIS with a Deactivated School District



Enrollment Type

The Students Served from Deactivated Schools is a count of students whose normal home school has been deactivated and were served by a different school district. These students will be subtracted from the district's enrollment and will be added to the district of residence. These students are identified by the deactivated school district in SIS.

- What is included
 - Any student who is counted in the Home school Enrollment, and has been flagged in SIS with a Deactivated School District



Enrollment Type

The Students Served by State Authorized Charter Schools is a count of students who attend a State authorized Charter school from the authorizing public-school district. This count is added to the Home student enrollment count for Average Student Enrollment calculations

- What is included
 - Any student who is counted in the home school enrollment and has a home school listed as a State Authorized Charter schools
 - Details about State Authorized Charter Schools can be found here
 - <https://www.isbe.net/Pages/Illinois-State-Charter-School-Commission.aspx>



Enrollment Type

The English Learners (PreK-12) is a count of students who are participating in a Transitional Bilingual Education (TBE) or Transitional Program of Instruction (TPI) and meeting the requirements and program application procedures of Article 14C of the School Code. This count is not included in Average Student Enrollment Calculations and is a standalone count used in EBF.

- What is included
 - Students who have an enrollment in SIS in grades Pre-Kindergarten through 12th and have a EL Placement Entry Status of TBE Full time, TBE Part time, or TPI.
- What is Excluded
 - Private School or Home-schooled Students who have an enrolled with a public school for IEP services. This is determined by the IEP-Student Tracking and Reporting System (I-Star) if the student has a fund code of L or P.
 - Students in a grade level Birth to Three.



Enrollment Type

The Special Education Pre-K Students is a count of Pre-Kindergarten students who are receiving Special Education Services and are in a grade level of Pre-Kindergarten. Half of this count is added to the Home Student Enrollment count for Average Student Enrollment calculations

- What is included
 - Students who have an enrollment in SIS with a grade level of Pre-Kindergarten
 - Student who have a record in the IEP-Student Tracking and Reporting System (I-Star) with a fund code of A, B, K, N, or X
- What is excluded
 - Student who have a record in the IEP-Student Tracking and Reporting System (I-Star) with a fund code of D, E, F, H, L, P, and U. As these students are Either part of the Section 14-7.03 Orphanage Act, Attend the Phillip J. Rock Center or are a Private/Home Schooled Student.



Enrollment Type

The Special Education Youth in Care is a count of students who are Youth in Care and who receive special education services. These students will be deducted from the base enrollment counts of the resident district. All the counts were extracted from the data submitted by the districts to ISTAR. If the Special Education approval record is not approved in ISTAR the district will not be able to submit a YIC claim. Enrollments will be deducted from the base enrollment count.

- What is included
 - Students who have an enrollment in SIS in grades Kindergarten through 12th.
 - Student who have a record in the IEP-Student Tracking and Reporting System (I-Star) with a fund code of D, E, or F
 - Student has been identified by DCFS as a Youth in Care

At the bottom of the Evidence Based Funding screen is a link to download a full list of students in your district that DCFS has been identified as Youth in Care. Please review this list and insure that if these students have an IEP they are using Funding Code D, E or F.



Enrollment Type

The Students Served by State Funded Schools is a count of students who are enrolled in their home district but reside and are served by the Illinois School for the Deaf, the Illinois School for the Visually Impaired, IL Center for Rehab & Education or the Philip J. Rock Center and School. This will be deducted from the base enrollment counts of their resident district.

- What is included
 - Students who have an enrollment in SIS in grades Kindergarten through 12th.
 - Students who have a serving school in SIS of Illinois School for the Deaf, the Illinois School for the Visually Impaired, IL Center for Rehab & Education or the Philip J. Rock Center and School



Enrollment Type

The Tuition-In Students is a count of students whose **parents pay tuition**, so the student may attend a non-resident school district. All the counts were extracted from the data submitted by the districts to the ISBE Student Information System (SIS). Enrollments will be deducted from the base enrollment count.

- What is included
 - Students who have an enrollment in SIS in grades Kindergarten through 12th who have been flagged in SIS as Tuition-In



Enrollment Type

- The Youth In Care in County Detention Centers is a count of students who have been transferred to a county juvenile detention center. These students should be reflected in the school district where the detention center is located. If a district has these students enrolled on a count date they will be deducted from their counts.
- What is included
 - School districts submit a file to SIS identifying students who are attending Detention Centers to SIS for students in grade level Kindergarten through 12th.



Enrollment Type

- The Youth In Care in Group Homes is a count of students who are in the care of the State and placed in a State licensed group home or child care institution within a school district. All the counts were derived from data provided to ISBE from DCFS. Enrollments will be deducted from the base enrollment count.
- What is included
 - Students who have an enrollment in SIS in grades Kindergarten through 12th.
 - Students who DCFS has identified as being in a group home on October 1st or March 1st.



Calculating Final % of Adequacy

The Evidence-Based Funding (EBF) formula performs calculations in three general stages.

Completing the first and second stages produces a ratio that determines how far away a district is from adequate funding in Stage Three.

- **Stage 1:** Determining the cost of educating all students, according to the defined cost factors. The result is the **Adequacy Target** for each district. This is the ratio's **Denominator**.
- **Stage 2:** Measuring each district's local resources for comparison to the Adequacy Target. This is the ratio's **Numerator**.
- **Stage 3:** Distributing additional state assistance to aid districts in meeting their Adequacy Targets. (**Tier Funding**)

$$\begin{array}{|c|} \hline \text{Final} \\ \text{Resources} \\ \hline \end{array} \div \begin{array}{|c|} \hline \text{Adequacy} \\ \text{Target} \\ \hline \end{array} = \begin{array}{|c|} \hline \text{Final \% of} \\ \text{Adequacy} \\ \hline \end{array}$$



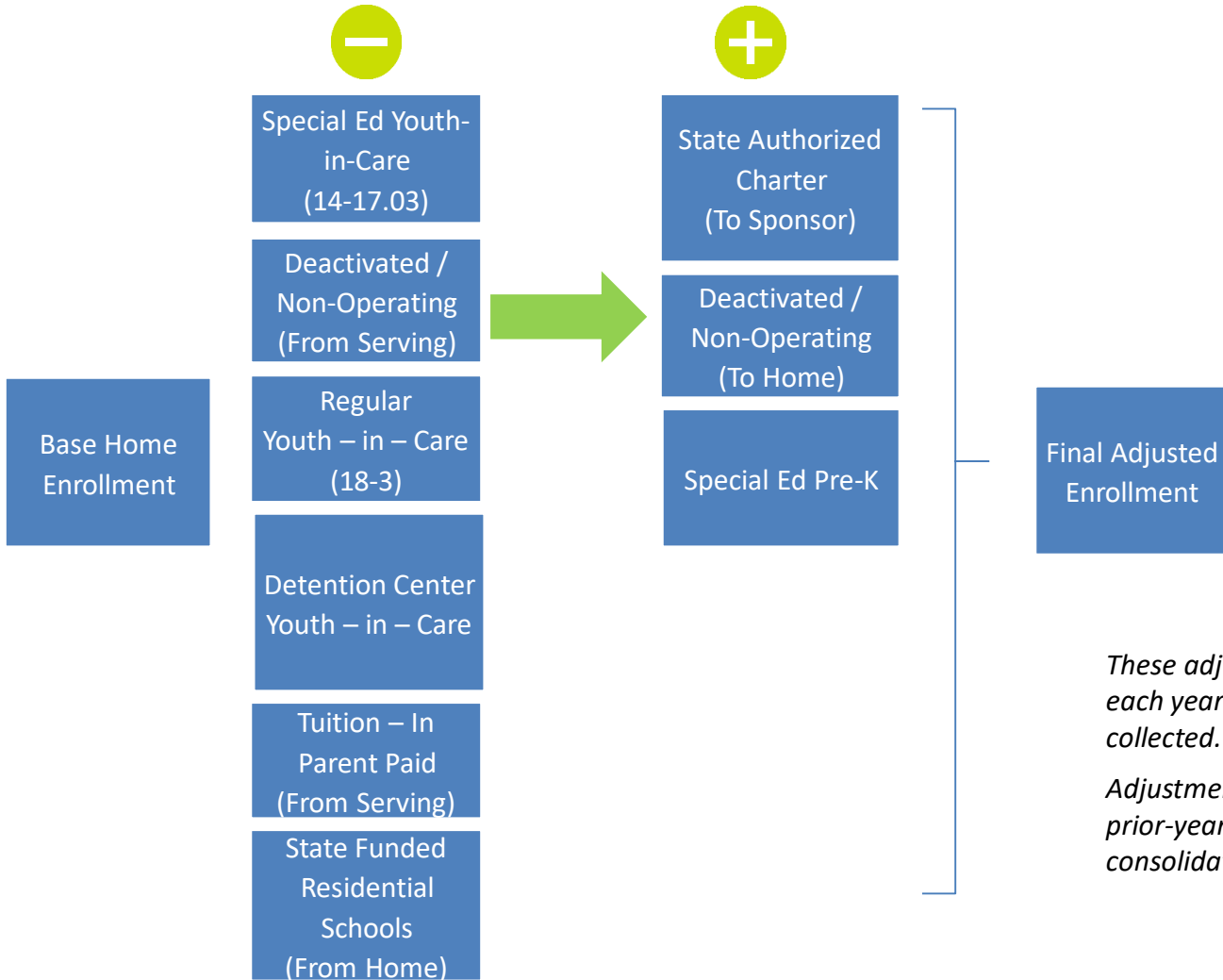
Average Student Enrollment (ASE)

- Calculating the total investment costs that determine a district's Adequacy Target requires enrollment data by grade.
- Enrollment impacts the number of calculated Full Time Equivalent (FTE) associated with each of the Adequacy Target cost factors or a per student cost.
- EBF requires several adjustments to raw home enrollment data to account for subset student populations. These subset student populations include:
 - » Special Education Pre-Kindergarten Students
 - » Students from Deactivated/Non-operating Districts
 - » Regular (18-3) Youth-in-Care
 - » Tuition-In Students
 - » Students Served at State-Authorized Charters
 - » Special Education Youth-in-Care
 - » Students at State-Funded Residential Schools
- EBF requires the collection of two prior years of enrollment in addition to the current one year of enrollment for the calculation of a three-year average. The **greater of** either the current year or the three-year average for each district's **Average Student Enrollment (ASE)** is used in EBF calculations.

Note: Half-day Kindergarten students are counted as 0.50.



Average Student Enrollment (ASE)



These adjustments apply to each year of enrollment collected.

Adjustments also apply to any prior-year school district consolidations.

***ISBE collects the above data on both October 1 and March 1. EBF calculations use the greater of the three-year average or current year for each data set. Final enrollment for each year is the average of the October 1 and March 1 data sets.**



Average Student Enrollment (ASE)

Example:

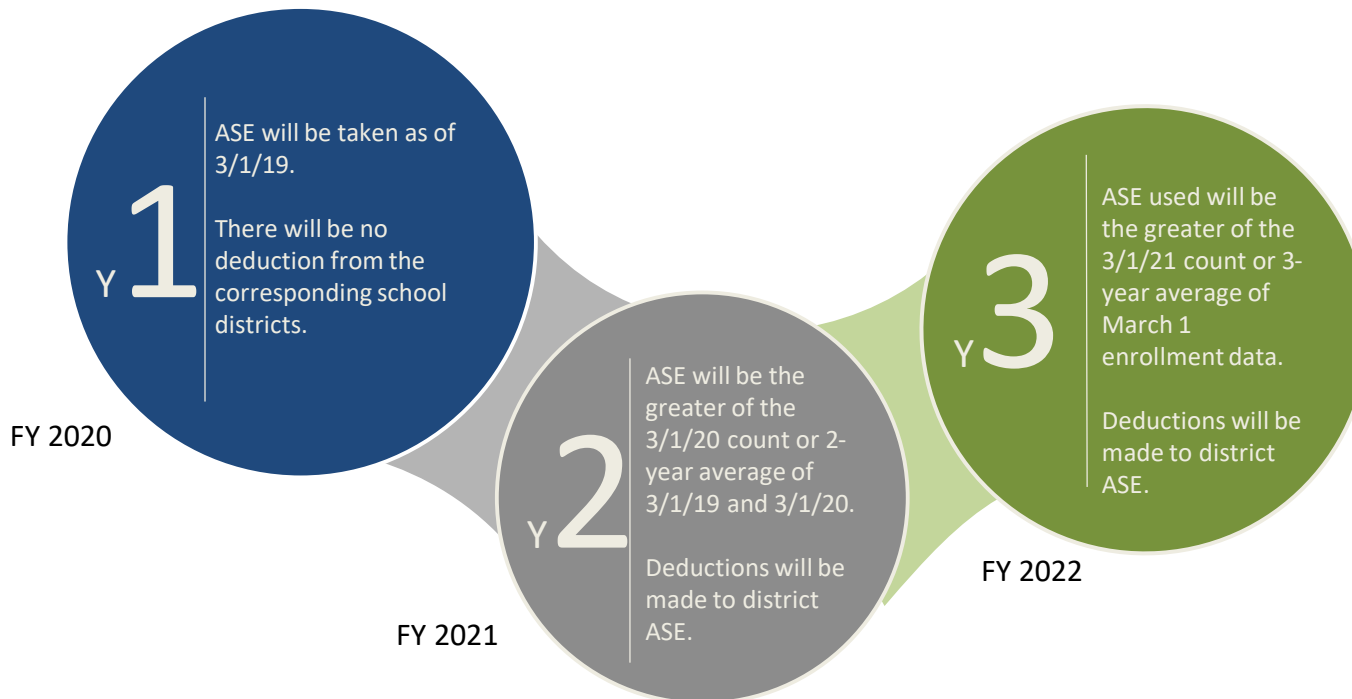
	SY18	SY19	SY20	3 Year AVG	ASE
SD1	800	900	1000	900	1000
SD2	1000	900	800	900	900
SD3	1000	1000	1001	1000.33	1001



Regional Offices of Education Enrollment

In spring 2019 PA 101 – 0010 became law and allowed for Regional Offices of Education (ROE) programs to receive Tier Funding. This includes programs established under Section 2-3.66 or 2-3.41 or intermediate service centers under Article 13A or 13B.

Given the unique nature of these programs, both district and ROE enrollment will be adjusted. Statute dictates that this will be phased in as illustrated below.



After FY 22 ROE ASE will always be the greater of the current year or 3-year average based on the March 1 count only.

Enrollment will be deducted from the corresponding districts



Enrollment Date Notice

According to EBF, students are only counted if they are enrolled on October 1st or March 1st. This year because March 1st is on a Sunday, if you exit a student on Friday February, 28 and the next school district enrolls the student on Monday March 2nd then neither district will have the student counted on their EBF. As such, if you did end a students enrollment on February 28th or 29th then you should update the exit date to March 1st so that you get credit for the student.



Converting to full day K

If a school district reports to the State Board of Education the intent to implement full-day kindergarten district-wide for all students by March 1st of the school year, then when ISBE calculates the ASE, all historic half day kindergarten students will be counted as full day kindergarten students.



EBF Deadline

In accordance with (105 ILCS 5/18-8.15), the deadline to have all EBF related information uploaded to ISBE is April 16th. ISBE will be evaluating the need to extend this deadline.



Contact Information

For Assistance with submitting or updating information in SIS please contact the SIS help desk by calling (217) 558-3600 and select Option 3 to ask for a SIS technician.

If you need more information about EBF or how each Enrollment Type is calculated ISBE Data Strategies and Analytics Department at (312) 814-3950.

Questions pertaining to the operation of I-Star should be directed to Harrisburg Project support@hbug.k12.il.us, phone (800) 635-5274.

Questions pertaining to special education student approvals can be directed to Jamie Johnson jjohnson@isbe.net, phone (217) 782-5256.



Questions???

THANK YOU!