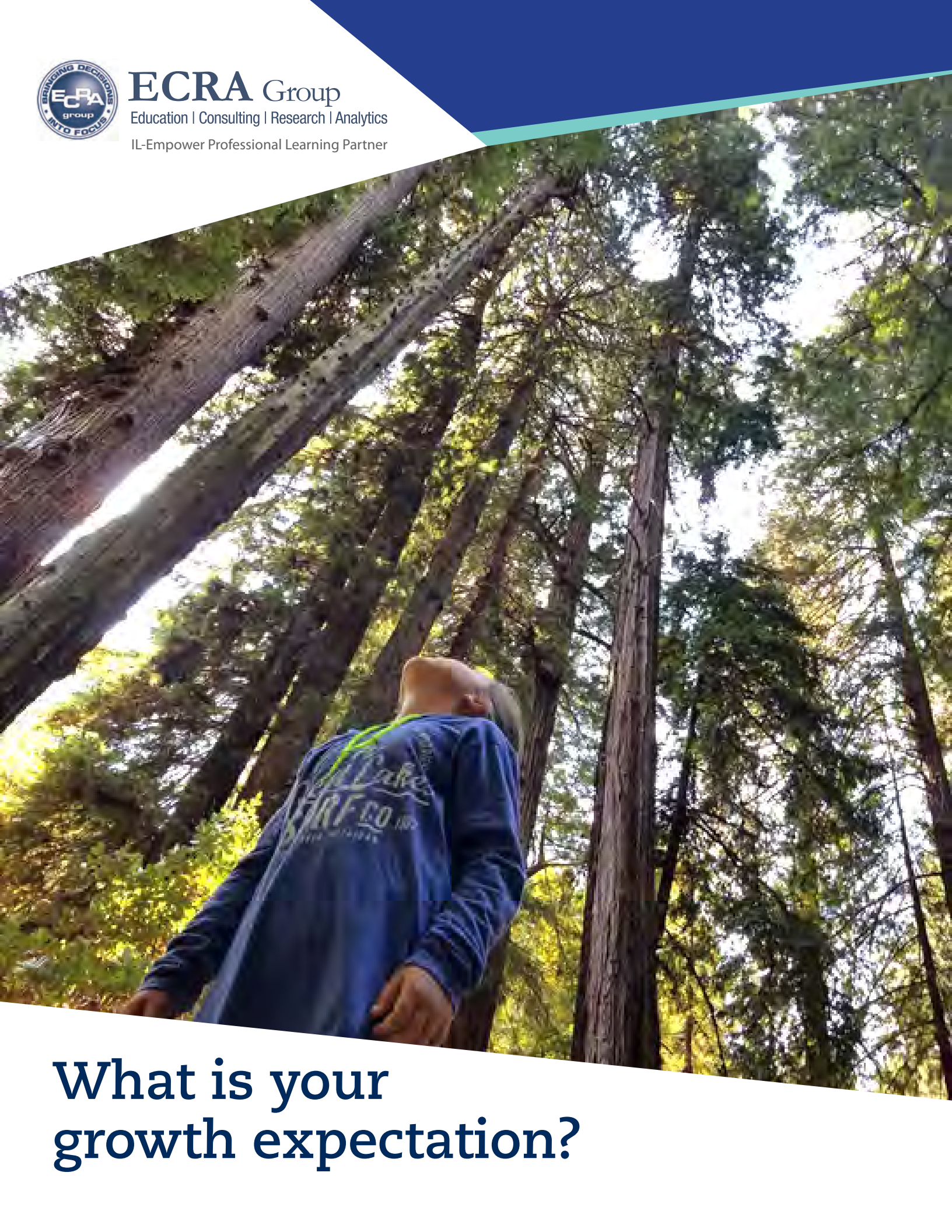




**ECRA** Group

Education | Consulting | Research | Analytics

IL-Empower Professional Learning Partner



**What is your  
growth expectation?**

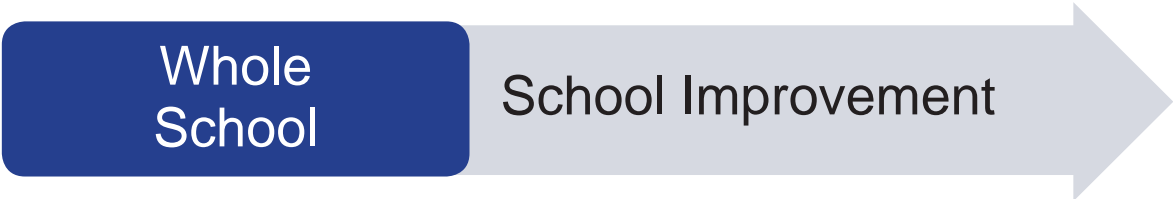
# IL-EMPOWER Services

Tell your story,  
*DEFINE YOUR SUCCESS*



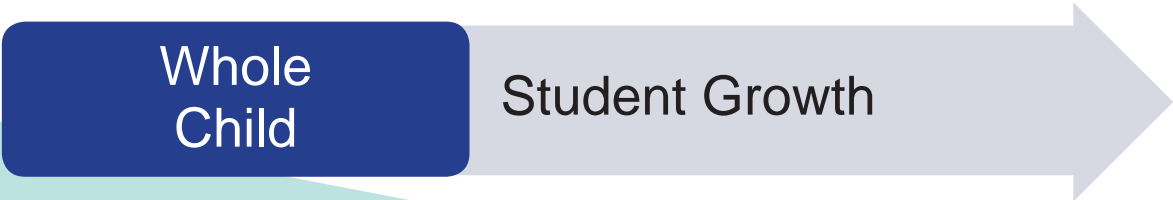
## Strategic Dashboard

- Engage your community to create a compelling vision for student success
- Establish meaningful performance benchmarks
- Govern district and school progress toward strategic goals and objectives
- Communicate the priorities and progress of the school system to the community



## Analytics

- Personalize growth expectations for individual students
- Establish annual growth targets for schools
- Quantify the return on investment that various programs and interventions are having on student outcomes
- Measure the impact of equity initiatives



## Learner Profile

- Develop and operationalize your portrait of a graduate
- Move beyond standardized test scores toward a whole child personalized set of indicators
- Monitor student readiness based on pathways
- Engage students and parents as active participants in the learning process



ECRA Group partners with school districts to implement best practices congruent with the individual needs and desires of the school leadership. We provide professional development, coaching, facilitation and technical assistance to enact strategies and to accelerate student growth. With ECRA, the process always delivers a work product that advances district priorities and satisfies reporting mandates.



# Strategic Dashboard

## USE CASES

- Governance
- Strategic monitoring
- Benchmarking
- Community relations

## INTENDED USERS

- Boards of Education
- Superintendent
- Cabinet
- Community

## Tell Your Story

A strategic dashboard is a powerful tool for Superintendents and boards of education to tell their school district's story, and track strategic indicators and priorities at the aggregate level. The strategic dashboard provides an infrastructure for school districts to build their own school report card at the local level against a local definition of quality. It provides a framework for the superintendent to align communication, define school quality, and evaluate the impact that school improvement initiatives are having on student, financial, and other system outcomes.

## Define Your Success

- Market and brand the district's vision for stakeholders
- Establish school quality and student success indicators and benchmarks
- Monitor the degree to which the school district is executing strategies

Market and brand the district's vision for stakeholders

#### Mission Statement

The mission of Sample Unit School District 50 is to provide a quality education that prepares today's child for tomorrow's world.

#### Vision Statement

Sample Unit School District 50 will serve its community by providing an exemplary education focused on whole-child development,

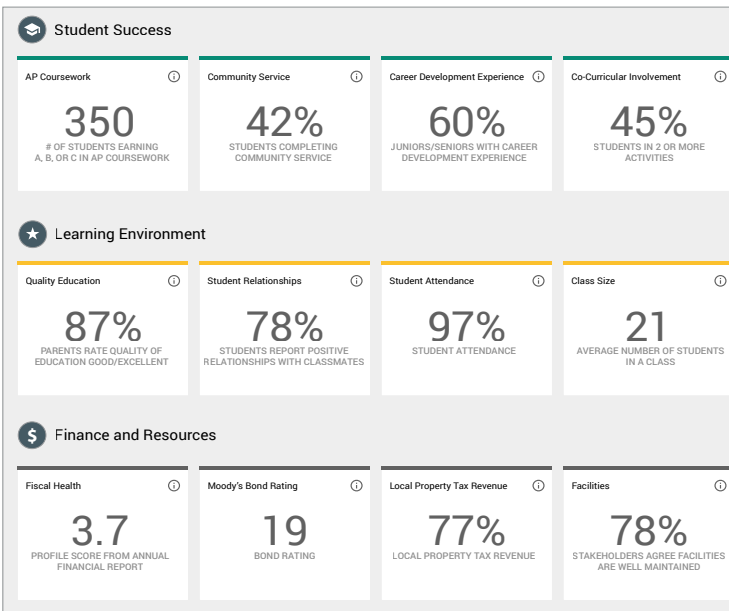


Guiding principles are the beliefs that set the foundation for how an organization will operate. The principles are accepted guidelines that capture the District's values and priorities and provide direction for employees as they go about their daily work. The following guiding principles were developed in alignment with stakeholder feedback and revised by the Board of Education.

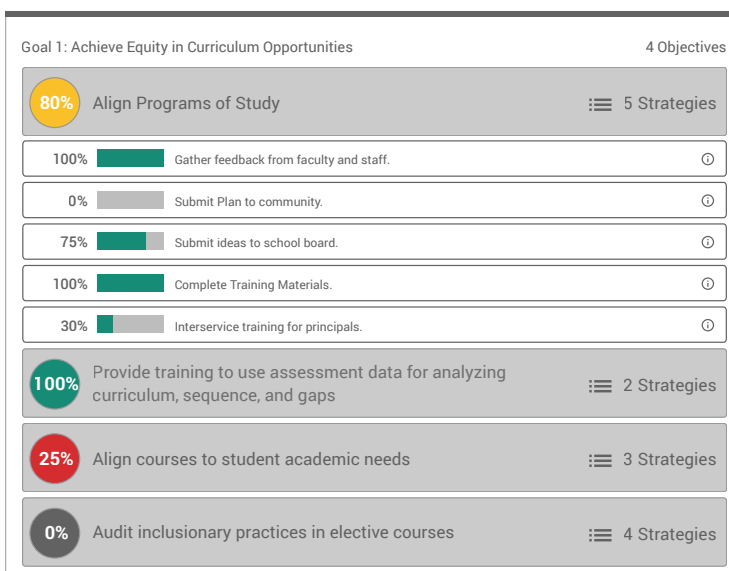
##### We believe:

- Each student is entitled to an excellent education that meets his or her individual needs.
- A diverse curriculum improves student learning and expands student experiences.
- Technology use is an essential skill for enhancing student learning and growth.
- In providing a safe and respectful school environment.
- Diversity expands one's worldview and enhances the education experience.
- Financial health and fiscal responsibility are fundamental to achieving our vision.
- Community partnerships strengthen our schools.

Establish school quality and student success indicators and benchmarks



Monitor the degree to which the school district is executing strategies







## School Improvement

### USE CASES

Data warehousing

School improvement

Multi-Tiered Systems of Supports (MTSS) or Response to Intervention (RTI)

Program evaluation

Board reporting

### INTENDED USERS

Administrators

School improvement teams

MTSS and RTI teams

## Overview

For many, the pressure to collect more and more data and to manage and store that data longitudinally has, and will continue to result in data overload and data exhaustion. Feeling “Data Rich and Information Poor®” is all too common.

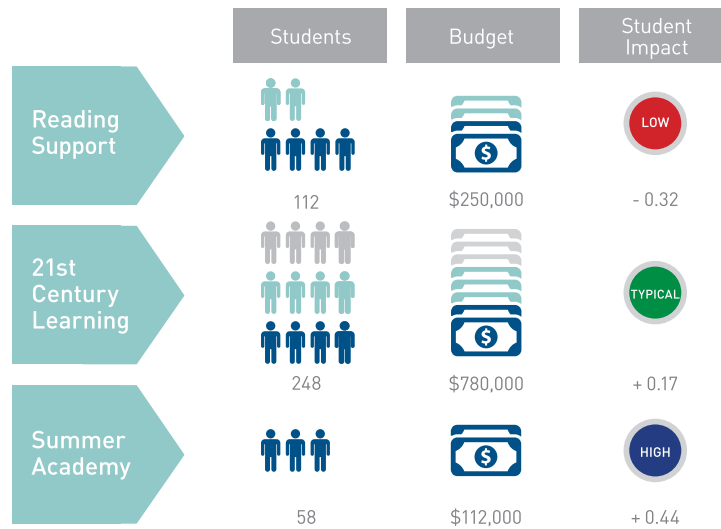
*Measuring the impact that school improvement initiatives, interventions, and programs have on student outcomes requires moving beyond merely reporting standardized test scores.*

More sophisticated approaches are motivated by the strategic intentions of school boards and leadership to document return on investment (ROI), increase quality and optimize resource allocation. The school improvement app helps school districts increase educational quality by aligning resources toward what is proven to drive student success.

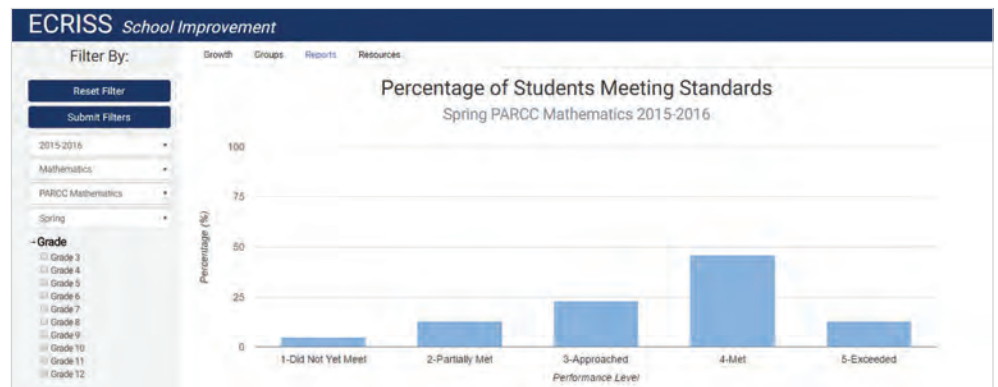
## Feature Highlights

- Create custom student groups
- Calculate effect sizes for school improvement initiatives, programs, and interventions
- Track longitudinal achievement by student groups
- Automate personalized projections for students
- Standardize aggregate achievement metrics
- Identify students for special programming

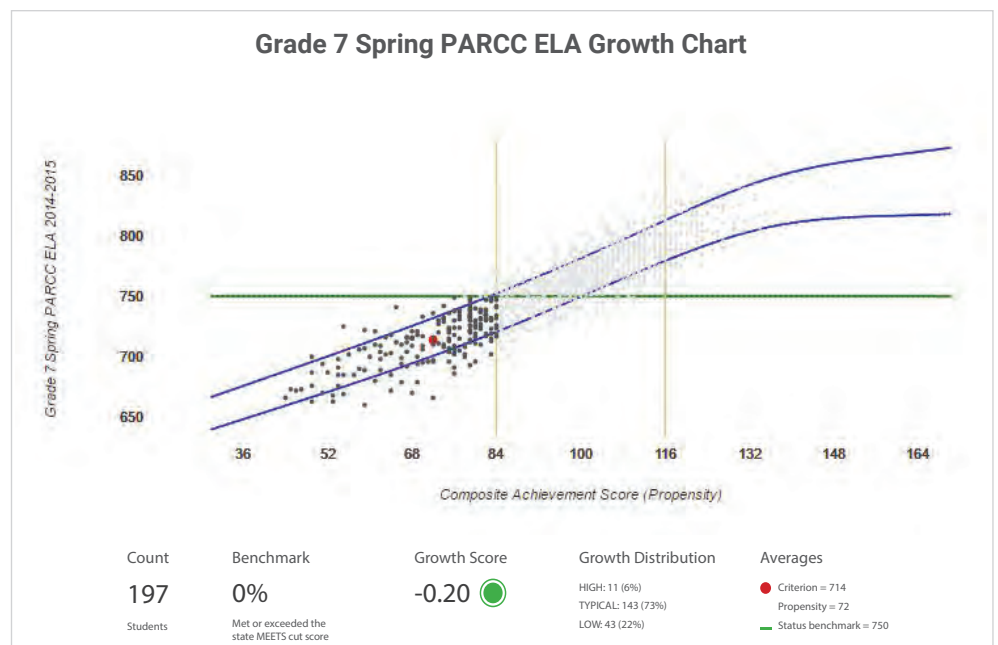
Measure return on investment for school improvement initiatives



Track achievement by student groups



Calculate effect sizes for school improvement initiatives, programs, and interventions





# Personalized Learner Profile (PLP)

## USE CASES

Data warehousing

Personalized learning and career pathways

College and career readiness monitoring

Course and program placement

Student engagement

Student guidance and counseling

Parent engagement and communication

## INTENDED USERS

Parents

Students

Counselors

Teachers

Administrators

## Overview

The Every Student Succeeds Act (ESSA) and other national initiatives are expanding the definition of college and career readiness and calling for local school systems to craft a broader and more inspiring definition for student success.

*Measuring student success requires moving beyond standardized test scores toward a multi-dimensional and personalized set of indicators that collectively capture a more modern definition of readiness.*

The ECRA Personalized Learner Profile paints a portrait of a student against a backdrop of a student's interests, motivations, goals and aspirations. It combines learning indicators across a range of constructs, allowing school districts to build applications of personalized learning consistent with the district's strategic plan and priorities of the community.

## Feature Highlights

- Multi-measure index of college and career readiness
- Engagement and Motivation
- Assessment
- Attendance
- Coursework and Grades
- Personalized Projections for Students
- Extracurricular Involvement
- Interests
- Interventions



## ECRA Personalized Learner Profile

**Walsh, Bradley**

ECRA MIDDLE SCHOOL A

Grade 8

## College and Career Readiness Indicators

**ON TRACK**

- Grades
- Coursework
- Assessment

- Attendance
- Extracurricular
- Engagement

June 6, 2016

## State Designations

LOW-INCOME MALE

WHITE NON-HISPANIC

LEP

IEP

LANGUAGE - ENGLISH

June 6, 2016

## Propensity

MATHEMATICS

118  
High

READING

95  
Typical

June 6, 2016

## Assessment

[View All](#)

MATHEMATICS

190 **M**  
SPRING MAP758 **E**  
SPRING PARCC805 **A**  
ECRA MATH

READING

234 **M**  
SPRING MAP755 **M**  
SPRING PARCC864 **B**  
ECRA READING

SCIENCE

21 **M**  
EXPLORE

June 6, 2016

## Coursework

[View All](#)ADVANCED  
ALGEBRA  
**A**READING  
HONORS  
**B+**INTRO TO  
CHEMISTRY  
**B**HISTORY OF  
WORLD CIV.  
**B+**CREATIVE  
WRITING  
**A-**

June 6, 2016

## Interests

[Edit](#)

- 1 Computer Programming
- 2 Healthcare
- 3 Manufacturing & Processing

June 6, 2016

## Programs

[Edit](#)

RTI

Taking a multi-tier approach to support Bradley's learning and behavior needs.

GIFTED

Bradley is being pulled for advanced mathematics with Mrs. Smith.

504

Peanut allergy via contact only.

June 6, 2016

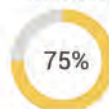
## Attendance

[View All](#)

Student



District



June 6, 2016

## Goals

[Edit](#)

- 1 Academic  
Read for 30 minutes a night.
- 2 Personal  
Volunteer my time 5 hours a week.



September 6, 2016

## Standards

[View All](#)

MATHEMATICS



READING



ENGLISH



SCIENCE



June 6, 2016

## Engagement

[Edit](#)

Student
 District



June 6, 2016

## Volunteer Hours

[Edit](#)

Student

40

District

28

June 6, 2016

## Extracurricular

[Edit](#)

Soccer

Team Captain

Key Club

President

Student Council

Class Representative

June 6, 2016

## Notes

[Edit](#)

Able to work independently.


janelee@ecragroup.com

Possesses good interpersonal skills and good communication skills.

janelee@ecragroup.com

...

June 6, 2016



ECRA Group has a 30-year history supporting school improvement efforts. ECRA is a national leader in the area of whole child measurement and multi-dimensional student growth. We value our school partnerships and we look forward to continuing our mission as part of the IL-EMPOWER network.

Contact ECRA at [IL-Empower@ecragroup.com](mailto:IL-Empower@ecragroup.com) or 847.318.0072 for more information.

ECRA Group, Inc.

1475 E. Woodfield Rd., 14th Floor  
Schaumburg, IL 60173  
(847) 318-0072

[www.ECRAGROUP.com](http://www.ECRAGROUP.com)