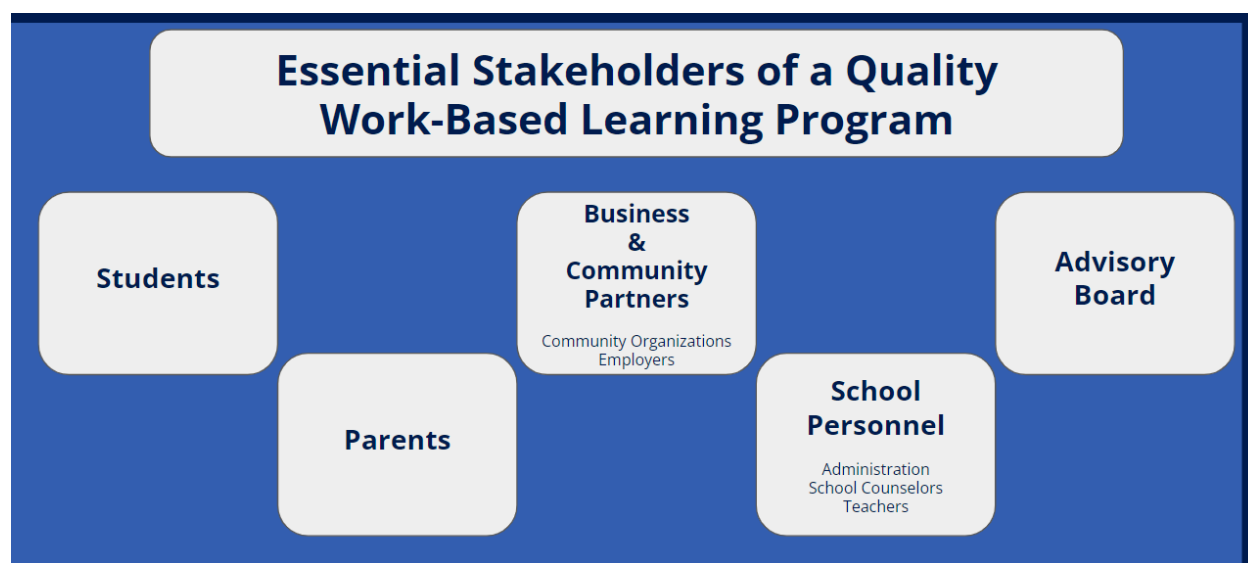


## Essential Stakeholders

A beginning step to planning and establishing essential partnerships of a Work-Based Learning program is to identify various stakeholders and the role that each plays. Below is a brief introduction to various stakeholder groups. As you progress through the modules in this course, you will see these stakeholder groups referenced and better understand the role that each group plays within your Work-Based Learning Program.



Although key stakeholders are outlined above, it is important to realize that this may not be an exhaustive list of essential stakeholders for your Work-Based Learning Program.

As you progress through this module, focus will be on establishing business and community partnerships including a Work-Based Learning Advisory Board. An advisory Board is necessary to direct and keep your Work-Based Learning program on track. Members of a Work-Based Learning Advisory Board play an important and necessary role in the development of a successful Work-Based Learning program.

An advisory Board should consist of a diverse stakeholder group containing a cross-section of interested persons and groups with professional, personal qualifications, or experience to contribute to the functions and tasks to be performed. It is essential to include business, industry, community, school-related, and post-secondary personnel.

