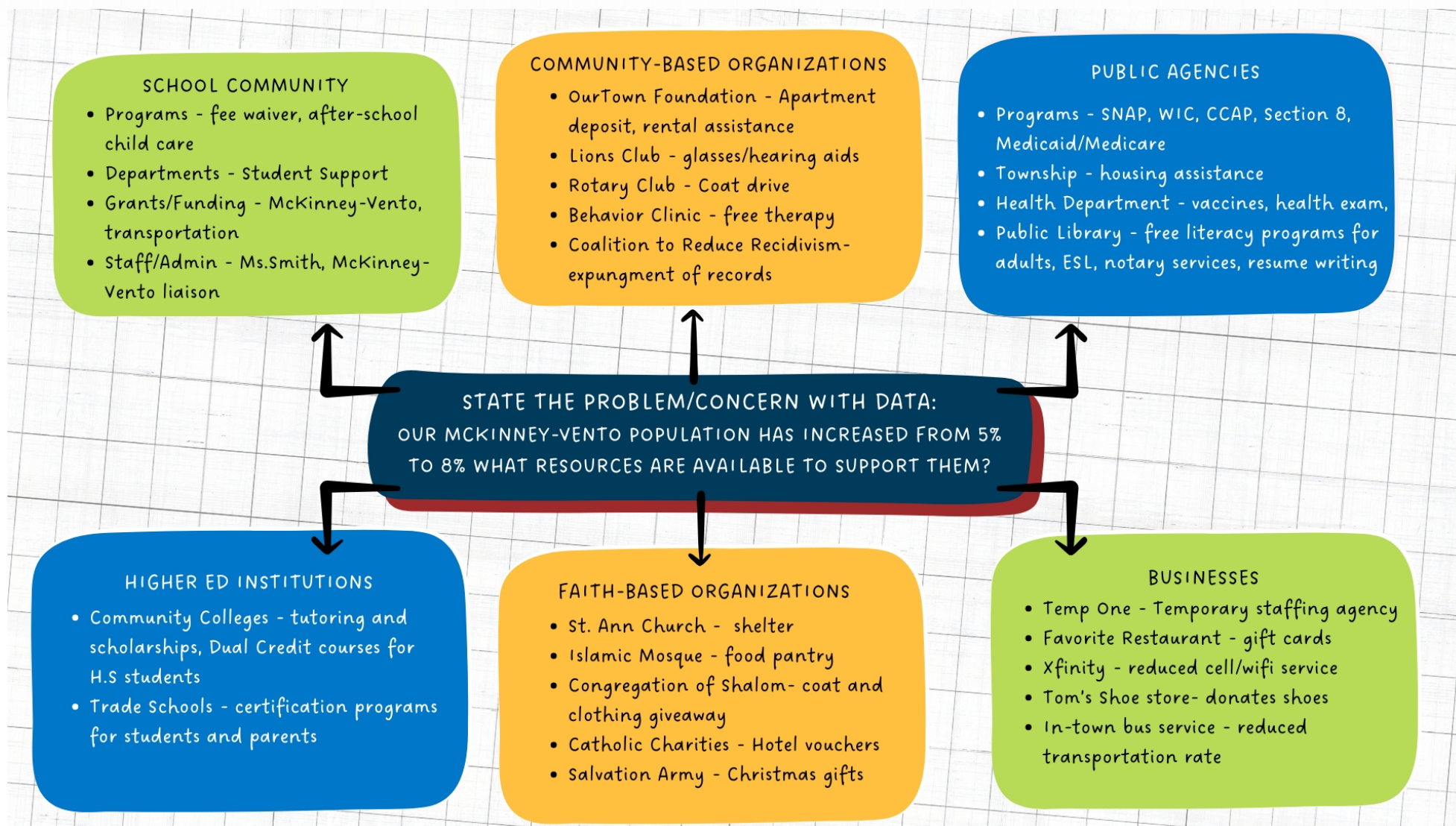


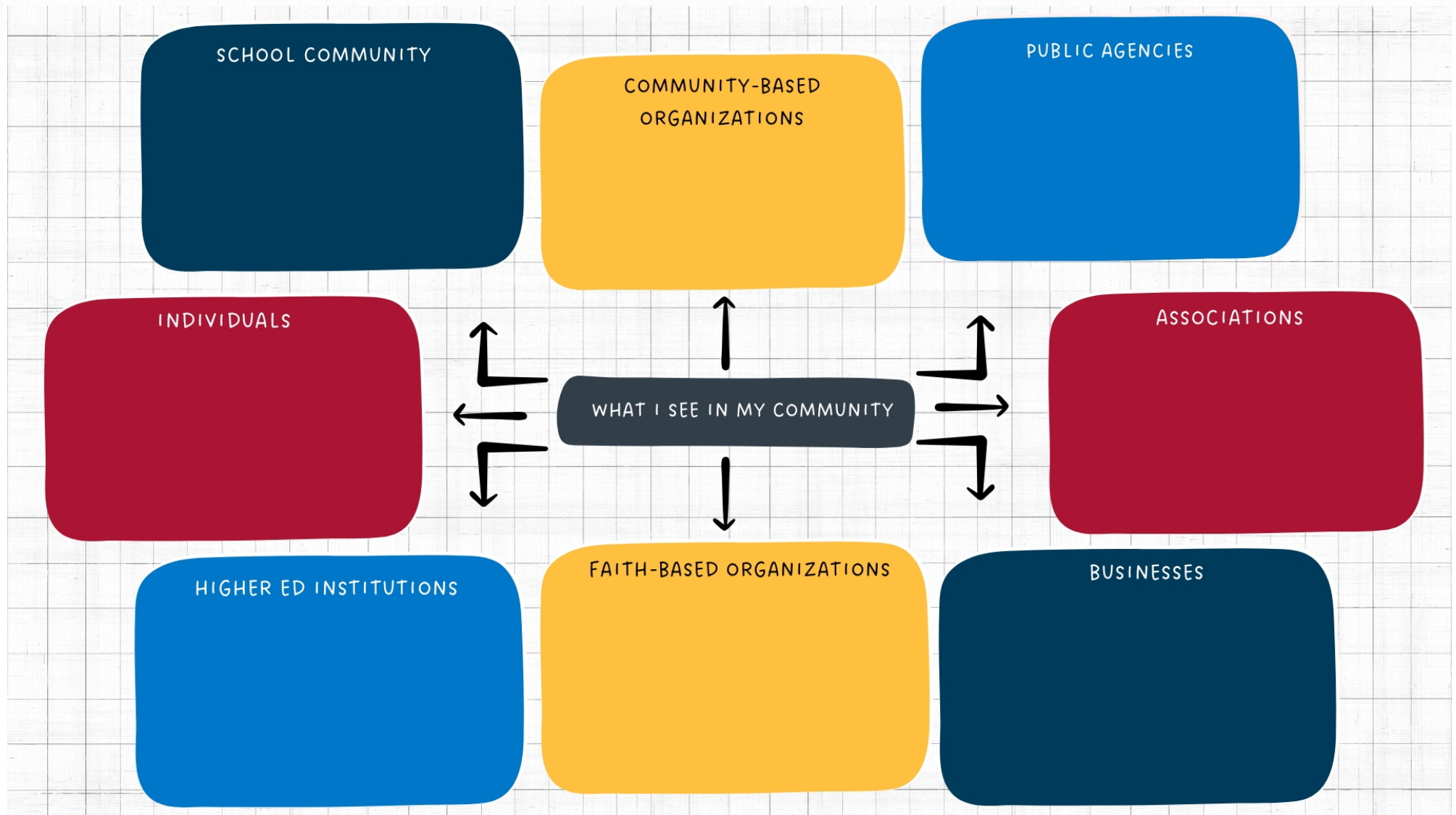
Asset Mapping

Every school community has assets that support staff, students, and families. An asset map is used to identify and document these resources. One is often completed following a needs assessment. For instance, after identifying an increase in the number of students in temporary living situations, you may focus on the key question, "What resources are available to support our families who qualify for McKinney-Vento services?" You could conduct activities like community walks, focus groups, online searches, and surveys to capture available opportunities. [Example of a focused asset map:](#)



You may also create a community asset map to help families adopt a strengths-based perspective of their community. Document positive resources, including individuals, institutions, agencies, organizations, group affiliations, and government services, that could support families through various means.

Community Asset Mapping Template



Consider internal and external assets as well as talents and tangibles. You may also consider plotting locations on a map utilizing apps, such as Google Maps, to create a better visual of their locations.

When the map is complete, organize the information on a spreadsheet to include more details, such as contact information, that will help staff and families connect with the resources.

Name of Program	Contact Information	Requirements
List the name of the organization and the program name.	Include address, phone number, name of contact person, their title, their email.	List any requirements for families to be able to participate in the program (e.g., income restrictions, citizenship status, etc.).