

# Planning Year Title I, Part A, Section 1003 Grant Application

November 25 and 26, 2024

---

Dr. Nikki Combs  
Director  
School/District Improvement

Nick Heckel  
Supervisor  
School/District Improvement

Dr. Trevor Chapman  
Lead  
School/District Improvement

Dr. Kathy Moesch  
School Improvement Coordinator  
School/District Improvement

Merle Siefken  
School Improvement Coordinator  
School/District Improvement

Camilla Stewart  
School Improvement Coordinator  
School/District Improvement

Caprice Walters  
School Improvement Coordinator  
School/District Improvement

Casey Wills  
School Improvement Coordinator  
School/District Improvement

Krystina Kelley  
School Improvement Coordinator  
School/District Improvement



# Today's Outcomes

To equip grant writers with the knowledge and resources necessary to develop an approvable FY2025 Planning Year Grant application.



Planning Year

Budget Detail

# Key Terms

Cohort: Identifies the report card year a school was first identified for school improvement status

RC22

(Report Card 2022)

RC23

(Report Card 2023)

RC24

(Report Card 2024)



# Consolidated District Plan (CDP)

- Newly designated RC24 schools
- Submit an amendment for your CDP

# Purpose of the Planning Year Grant



## Complete the first two components of the Continuous School Improvement Process

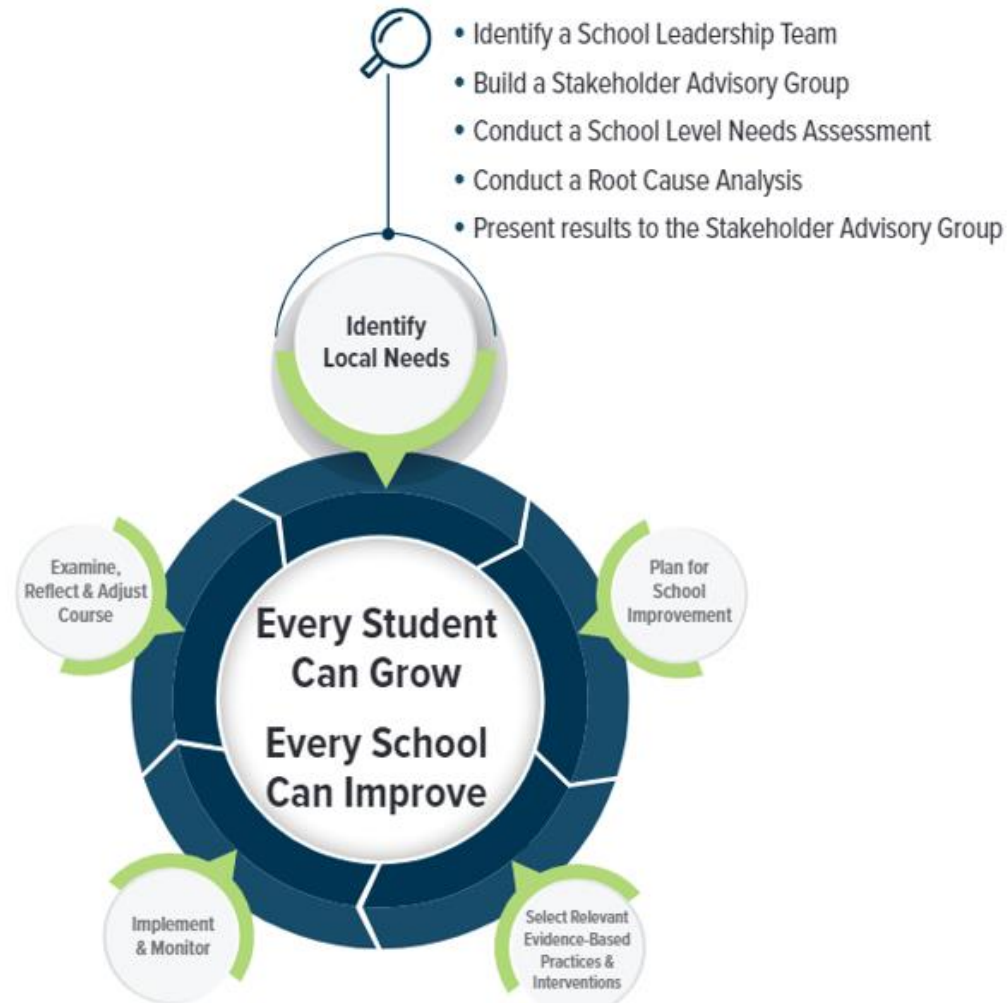
- Identify Local Needs
- Plan for School Improvement



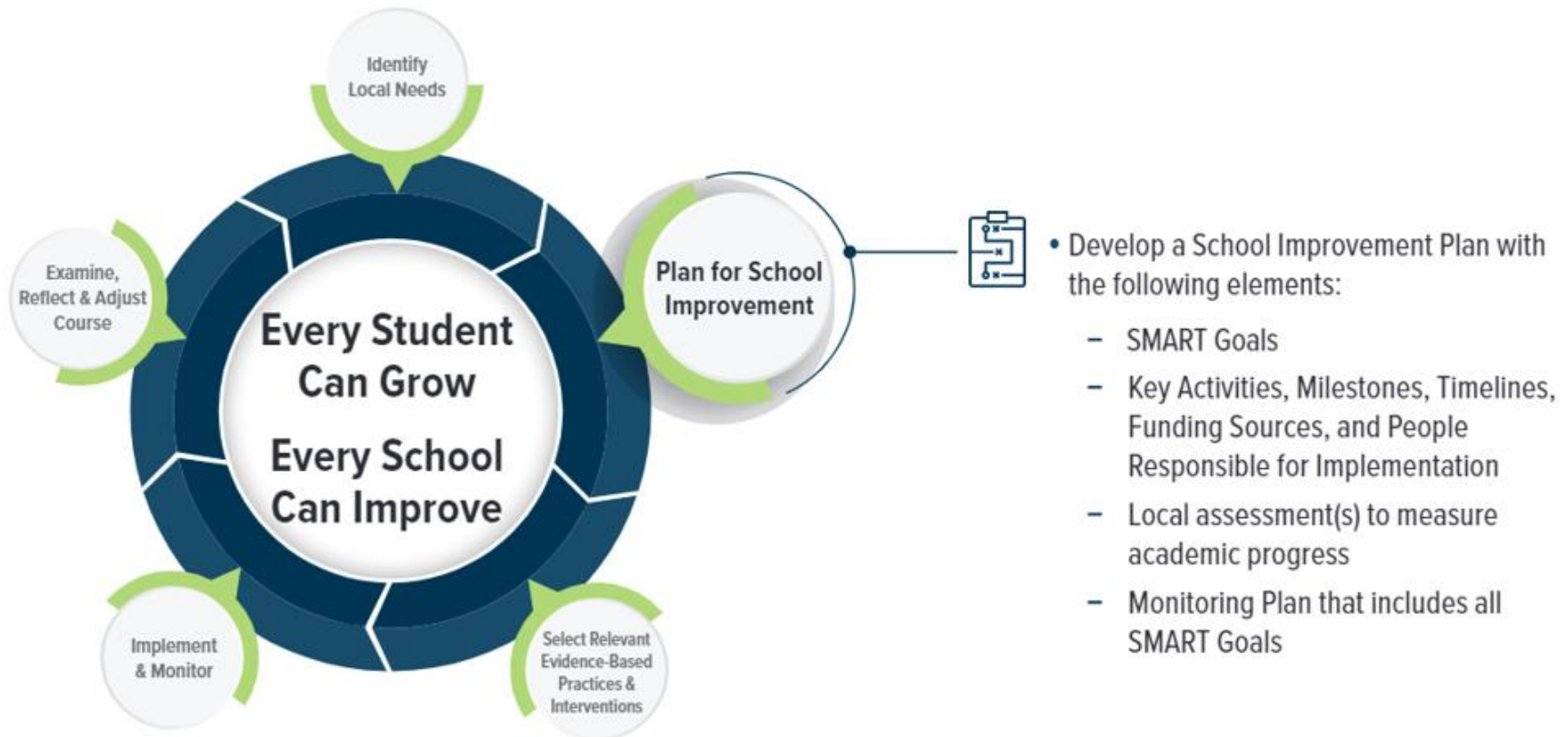
## Intended Use of Funds

- Contract with the ISBE-designated vendor to complete the needs assessment (Comprehensive and Intensive Schools)
- Compensate school staff for the time spent accomplishing these goals

# What happens during the Planning Year?



# What happens during the planning year?



# Planning Year – Title I-Part A-Section 1003

Step  
1

**Illinois State Board of Education**  
Dr. Steven Isoye, Chairman      Dr. Tony Sanders, State Superintendent of Education

My Systems

Below are systems that you are either authorized to use or are awaiting authorization from either your district (Pending-District), ROE (Pending-ROE) or ISBE (Pending-ISBE). Once you are "Authorized" to access a system, simply click on the system description to use it.

[Click Here for Due Dates](#)

Categories - Click to Expand/Collapse Tree	Authorization
<b>Grants</b>	
Active Grants	
Consolidated District Plan	Authorized
Illinois School Leader Institute	Authorized
Planning Year - Title I-Part A-Section 1003 Grant	Authorized
Title I-Part A-Section 1003 School Improvement Grant	Authorized
<b>Reporting</b>	
Electronic Expenditure Reports	Authorized
Grant Periodic Reporting System	Authorized
School Improvement Reporting System	Authorized
<b>Monthly</b>	
Student Information System - Statewide	Authorized
<b>ISBE Internal</b>	
Entity Profile System (Internal)	Authorized
<b>Educators</b>	
ELIS for Administrators	Authorized

Legend: ⓘ : System Description - Detailed    📅 : Due Dates    👤 : Profile

[Want to Signup for Other Systems?](#)

Step  
2

ILLINOIS STATE BOARD OF  
EDUCATION



# Planning Year – Title I-Part A-Section 1003

The screenshot shows the Illinois State Board of Education website. The header includes the state seal and the names of the Chairman and State Superintendent of Education. A navigation menu on the left lists various links. The main content area is titled 'Other Systems' and contains a table with columns for 'Categories' and 'Authorization'. The 'Categories' column lists 'Claims', 'Grants', 'Active Grants', and 'Surveys'. The 'Grants' and 'Active Grants' rows are highlighted in yellow. Blue arrows point from these rows to a red box on the right. The 'Authorization' column contains 'Sign Up Now' buttons for each category. A red box on the left contains text about the grant opening date and deadline.

Illinois State Board of Education

Dr. Steven Isoye, Chairman      Dr. Tony Sanders, State Superintendent of Education

Other Systems

To gain authorization to use a system, click on "Sign Up Now" under the "Authorization" heading.

[Click Here for Due Dates](#)

Categories - Click to Expand/Collapse Tree	Authorization
<a href="#">Claims</a>	
<a href="#">Grants</a>	<a href="#">Sign Up Now</a>
eGMS Dashboard	<a href="#">Sign Up Now</a>
eGMS Reports	<a href="#">Sign Up Now</a>
eGMS Shutdown	<a href="#">Sign Up Now</a>
<a href="#">Active Grants</a>	
<a href="#">Surveys</a>	

Grant opened on November 25, 2024.

★ A substantially approvable grant application is **due by** December 30, 2024, for a November 1, 2024, start date.

Planning Year-Title I-Part A-Section 1003 Grant

# Creating the FY25 Grant App Project

eGMS - Grants Application

RCDT [redacted]

County [redacted]

This Program Allows you to have multiple projects.  
Would you like to create a new project for the current year? ☐ Yes



This Program Allows you to have multiple projects.  
Would you like to create a new project for the current year? ☒ Yes

Year:  Project Code:

Project Title:  Allotment Amount: \$10,000



# Applicant Information

Applicant: [REDACTED]  
Application: 2023-2024 Planning Year - Title I-Part A-Section 1003 Grant - PL  
Cycle: Original Application  
Project Number: [REDACTED]

County: [REDACTED]

The application has been submitted. No more updates will be saved for the application.

[Overview](#) [Applicant Information](#) [Amendments](#) [FFATA](#) [Grant Planning Year](#) [Local School Information](#) [Budget Pages](#) [Program Risk Assessment](#) [GATA Pages](#) [Assurance Pages](#)

## Applicant Information

### Superintendent Contact Information:

Last Name\*

First Name\*

Address 1\*

Address 2

City\*

State\*

IL

Phone\*

Email\*

Select the area affected by the project: \*

- ☒ District  
☐ City  
☐ County  
☐ Multiple areas (list)  
☐ State-wide  
☐ Other (describe)

### Activity Period:\* (must be completed for each amendment as well as original application)

- ☐ Regular Project Year - activities completed through June 30. No new obligations/activities after June 30 except to pay outstanding obligations made prior to June 30 or to pay for teacher salaries for activities completed but working only 9 months).
- ☒ Extended Project Year - activities occurring between project begin date and August 31.


### Grant Period:

Begin Date: November 1, 2023 if received by the due date, or the receipt date of a substantially approvable application, whichever is later

End Date: 08/31/2024

### Applicant Comments:

# Grant Planning Year Tab



Illinois State Board of Education

Be

ESMS HOME

ISBE HOME

LOGOUT

eGMS - Grants Application

SESSION TIMEOUT 59:57

Applicant: [REDACTED]

County: Clay

Planning Yr - Title I-Part A-Section 1003 Grant ▼

Application: 2023-2024 Planning Year - Title I-Part A-Section 1003 Grant - PL

Cycle: Original Application

Project Number: 24-4331-PL-12-013-0100-26-Planning Year-Title I Part A Section 1003

[Printer-Friendly](#)

[Click to Return to Application Select](#)

Overview

Applicant Information

Amendments

FFATA

Grant Planning Year

Local School Information

Budget Pages

Program Risk Assessment

GATA Pages

Assurance Pages

Submit

Application History

Page Lock Control

Application Print

Grant Planning Year

The purpose of the funding is to build the capacity of school leaders to implement effective school improvement practices with the goal being to enable schools in improvement status to improve student achievement and performance outcomes and move to exit status.

1. Summarize how the DISTRICT will facilitate the process of identifying local needs and developing a School Improvement Plan specific to each identified school. The narrative should address the elements within the components "Identify Local Needs" and "Plan for School Improvement" from The Continuous Improvement Process (found at the website below). The work outlined here will be completed during the planning period and should be concluded no later than the end of the current school year.\*

<https://www.isbe.net/Documents/School-Improvement-Process-graphic.pdf>

(0 of 7800 maximum characters used)

# Grant Planning Year Tab



Summarize how the district will facilitate the process of identifying local needs and developing a school improvement plan specific to each identified school. The narrative should address the elements within the components “Identify Local Needs” and “Plan for School Improvement” from the Illinois Continuous School Improvement Process.

**Item  
#1**



Summarize how this funding will be spent to support the work outlined in item #1.

**Item  
#2**

BOARD OF  
EDUCATION

# Local School Information Tab

Application: 2022-2023 Planning Year - Title I-Part A-Section 1003 Grant - PL  
Cycle: Original Application  
Project Number: 23-4331-PL-01-001-1720-22-Planning Year-Title I Part A Section 1003

[Printer-Friendly](#)  
[Click to Return to Application Select](#)

Overview	Applicant Information	Amendments	FFATA	Grant Planning Year	Local School Information	Budget Pages	Program Risk Assessment	GATA Pages	Assurance Pages	Submit	Application History	Page Lock Control	Application Print
Schools 1 - 50	Schools 51 - 100	Schools 101 - 150	Schools 151 - 200	Schools 201 - 250	Schools 251 - 300								
Schools 1 - 10	Schools 11 - 20	Schools 21 - 30	Schools 31 - 40	Schools 41 - 50									

### School Level Information - Schools 1 to 10

Below are schools to be served with Title I, Part A, Section 1003 School Improvement funds, their respective cohort year; improvement status; term; annual allocation; and designated student group for targeted schools. Please use this data to inform your planning year activities.

1. School Name

Cohort Year

Status

Targeted

Term

Allocation

\$

Designated Student Group(s)

All Students

Asian

Black/African American

Hispanic or Latino

White

Two or More Races

Hawaiian/Pacific Islander

Native American

English Learners

Former English Learners

Children With Disabilities/IEPs

Low Income

Low Graduation Rate

Yes

2. School Name

Cohort Year

Status

Comprehensive

Term

Allocation

\$

Designated Student Group(s)

All Students

Asian

Black/African American

Hispanic or Latino

White

Two or More Races

Hawaiian/Pacific Islander

Yes

# Planning Grant Allocations

## Targeted

- \$10,000

## Comprehensive

- \$55,000
  - (\$40,090 for AIR to administer the school level needs assessment)

## Intensive

- \$70,000
  - (\$51,234 for AIR to administer a more rigorous school level needs assessment)

# Budget Details Tab





# Allowable Use of Funds

Paying school personnel to collaborate and complete the requirements of the planning year.

Analyzing data to complete the school-level needs assessment.

Identifying resource inequities.

Researching evidence-based practices.

Developing a School Improvement Plan with all required components.

Paying for services from the state identified vendor to complete the school-level needs assessment (comprehensive and intensive schools only).

# Allowable Use of Funds

		Object 100	Object 200	Object 300	Object 400
Function	Function description	Salaries (Include the FTE of any paid salaries)	Employee benefits	Purchased services	Supplies and materials
2210	Improvement of Instruction Services	<ul style="list-style-type: none"> <li>• Additional pay for school staff to work beyond the contractual workday or year to complete the requirements of the planning year, including participation in needs assessment work with the designated vendor.</li> <li>• Substitute pay for teachers and paraprofessionals to complete the requirements of the planning year, including participation in needs assessment work with the designated vendor.</li> </ul>	<ul style="list-style-type: none"> <li>• Retirement contributions               <ul style="list-style-type: none"> <li>✓ TRS, including applicable federal TRS</li> <li>✓ IMRF</li> </ul> </li> <li>• Health, vision, dental, and life insurance</li> <li>• Health, vision, dental, and life insurance</li> <li>• Benefits for teachers to attend PD</li> <li>• Benefits for paraprofessionals to attend PD</li> </ul>	<ul style="list-style-type: none"> <li>• Registration fees for State ESSA Conference</li> <li>• Benefits for workers comp and unemployment</li> <li>• Professional services from the ISBE identified School-Level Needs Assessment vendor</li> </ul>	Professional learning materials specific to building the capacity of the School Leadership Team to effectively lead the work of continuous school improvement.

# Allowable Use of Funds

		Object 100	Object 200	Object 300
Function	Function description	Salaries (Include the FTE of any paid salaries)	Employee benefits	Purchased services
2300	General Administration  (maximum of 5% between Functions 2300 and 2400)	Additional pay for district-level administrators and support staff to work to complete the requirements of the planning year, including participation in needs assessment work with the designated vendor.	<ul style="list-style-type: none"> <li>Retirement contributions <ul style="list-style-type: none"> <li>✓ TRS</li> <li>✓ IMRF</li> </ul> </li> <li>Health, vision, dental, and life insurance</li> </ul>	<ul style="list-style-type: none"> <li>Benefits for workers comp</li> </ul>
2400	School administration  (maximum of 5% between Functions 2300 and 2400)	Additional pay for school-level administrators to work beyond the contractual workday or year to complete the requirements of the planning year, including participation in needs assessment work with the designated vendor.	<ul style="list-style-type: none"> <li>Retirement contributions <ul style="list-style-type: none"> <li>✓ TRS</li> <li>✓ IMRF</li> </ul> </li> <li>Health, vision, dental, and life insurance</li> </ul>	<ul style="list-style-type: none"> <li>Benefits for workers comp and unemployment</li> </ul>

# Budget Pages

Function Code	Object Code	Exclude from MTDC**	Expenditure Description and Itemization
2210 ▼	100 ▼	<input type="checkbox"/>	Substitute Pay (Subs for SIP Teams to meet during the day and book studies) Number of Substitutes - 7 Numbers of Days - 5
2210 ▼	100 ▼	<input type="checkbox"/>	Pay for SIP Teams for Summer Planning Number of Teachers - 7 Number of Days - 4
2210 ▼	200 ▼	<input type="checkbox"/>	Substitute Pay - Federal TRS - ..... = \$519 Substitute Pay - Federal TRS ..... = \$593
2210 ▼	200 ▼	<input type="checkbox"/>	Pay for SIP Teams for Summer Planning - Federal TRS - ..... = \$596 Pay for SIP Teams for Summer Planning - Federal TRS - ..... = \$355
2210 ▼	300 ▼	<input type="checkbox"/>	Payment for needs assessment services from AIR. (Required for planning year)
2210 ▼	400 ▼	<input type="checkbox"/>	Supplies for book studies. (Leading the Co-Teaching Dance) (Fostering Resilient Learners)
2210 ▼	400 ▼	<input type="checkbox"/>	Viking Administrative Team Book Study (The Coaching Habit)
2400 ▼	100 ▼	<input type="checkbox"/>	Additional pay for school-level administrator for additional work to complete requirements.
2400 ▼	200 ▼	<input type="checkbox"/>	Federal TRS for school-level administrator = \$263

# What If...

What happens to an RC22 or RC23 targeted school's FY2025 implementation grant funding if the school was newly designated as comprehensive on RC24?

Schools that were designated as targeted on RC22 or RC23 and then designated as comprehensive on RC24 will retain the funding that they received for the FY25 implementation grant and will also receive funding for the FY25 planning year grant. In FY26 they will receive Implementation Year 1 grant funding only.

# What If...

What reporting requirements does a school that was designated as targeted on RC22 or RC23 but is now designated as comprehensive on RC24 need to complete?

- Districts will still need to complete all quarterly expenditure reports for FY2025 grant funds.
- The school will **NOT** need to complete the SIR 1, SIR 2 or SIR 3 as a targeted school. Moving forward, the school will adhere to all program and reporting requirements for a newly designated comprehensive school.

# Questions & Answers



[schoolimprovement@isbe.net](mailto:schoolimprovement@isbe.net)  
(217) 524-1817

# School Improvement Helpline



[schoolimprovement@isbe.net](mailto:schoolimprovement@isbe.net)

(217) 524-1817