



Illinois Assessment of Readiness

ISBE-Pearson Proctor Cache and Infrastructure Trial

December 5, 2019



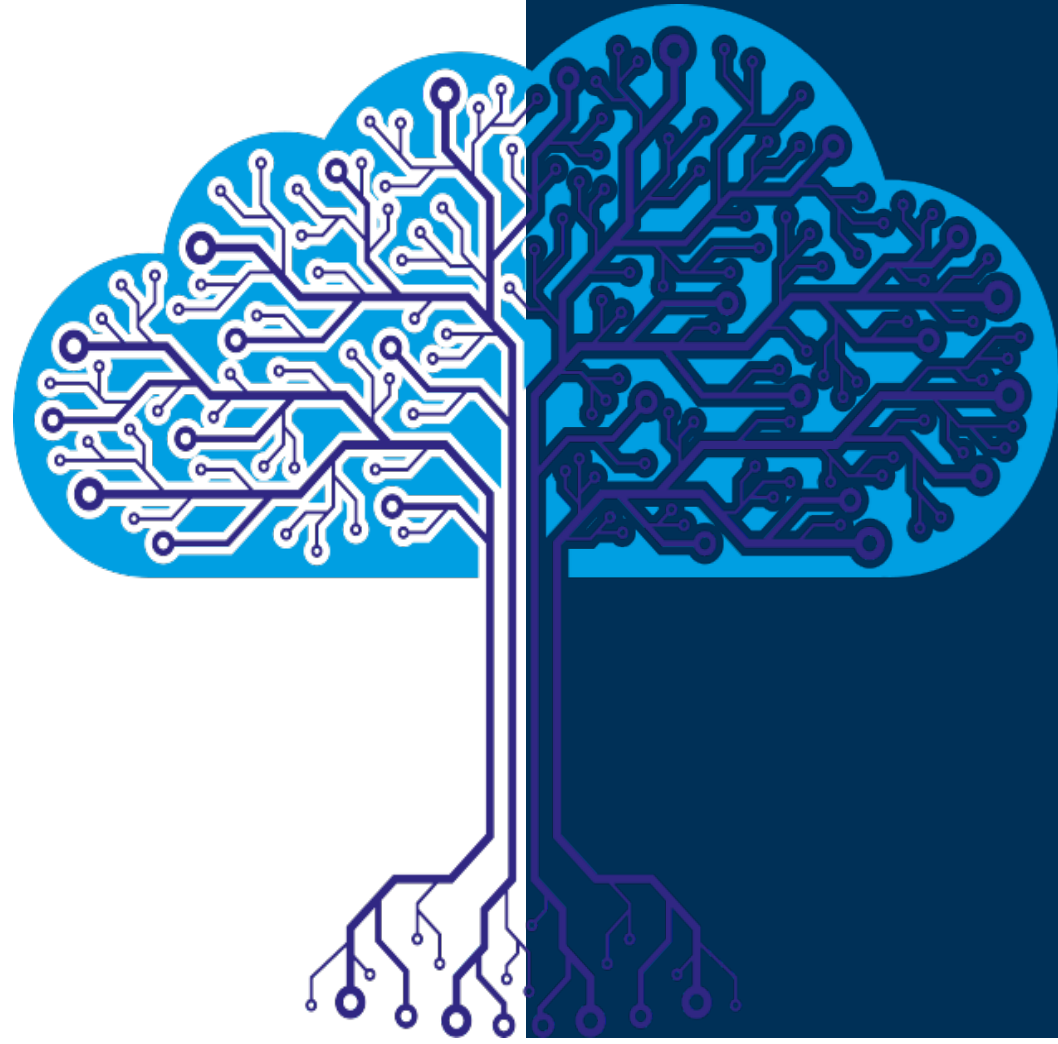
ISBE Team

- **Rae Clementz**, Director of Assessment and Accountability
- **Jim Palmer**, Principal Consultant; Assessment
- **Wesley Bruce**, Technology Consultant

Pearson Team

- **Kamryn Phillips**, Field Solutions Engineer
- **Jon Odle**, Field Solutions Engineer
- **Holly Phelps**, Program Technology Manager
- **Kathy Johnson**, Sr. Project Manager

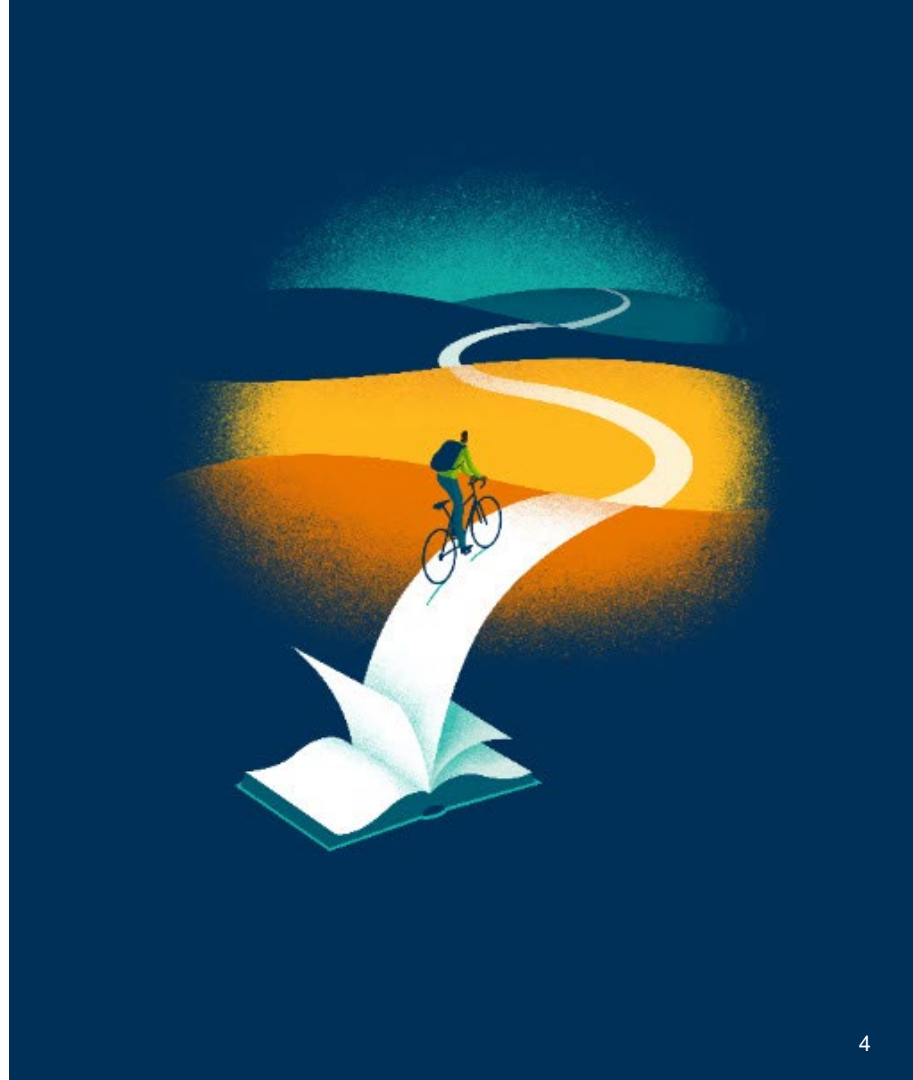
Proctor Cache



Proctor Cache History

Originally developed in 2001, to support environments with:

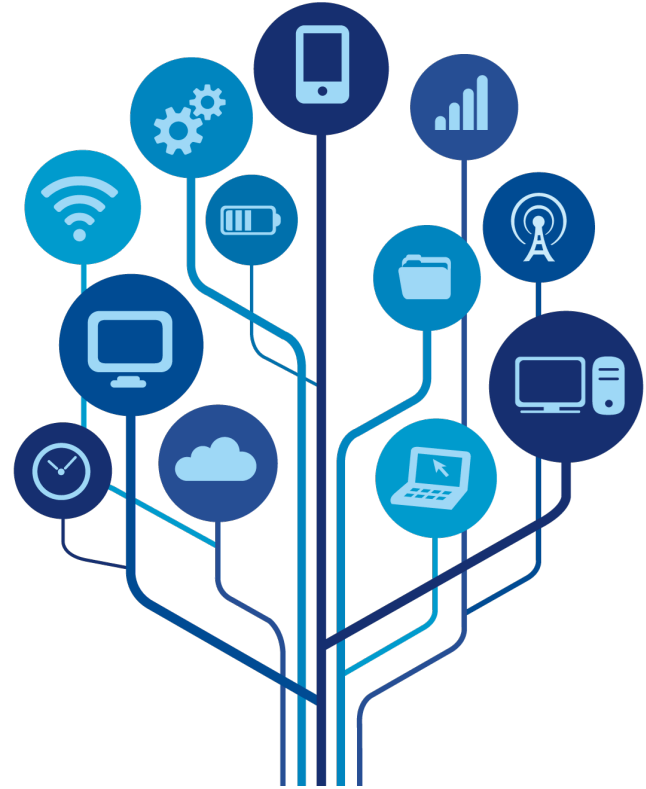
- Limited Internet bandwidth
- Unreliable connectivity to the Internet
- Tests with large media files (audio/video)



Proctor Cache Today

Factors reducing the need/benefit of Proctor Caching:

- High-speed Internet access now more readily available in all schools.
- School Internet connectivity more stable. In many cases multiple carriers supply Internet access for a district.
- Media files now common place both in testing and daily learning in a school. Schools and districts are moving away from web content caching themselves as their bandwidth has increased.



Proctor Cache Decision

- Proctor Caching will be fully supported for the Spring 2020 IAR administration.
- With increased bandwidth available in many schools, proctor caching may not be necessary.
- Decisions should be made based on the bandwidth and technology at each school.
- ISBE strongly recommends setting up a secondary save location.
- Many factors need to be considered before deciding not to proctor cache:
 - Peak bandwidth usage during the school day
 - Number of students who use “larger forms” (Math Text-To-Speech, Closed Caption, American Sign Language)
 - Content filters
- Recommend running an infrastructure trail before making the decision to not proctor cache.

ISBE Bandwidth Recommendation for Proctor Cache

Internet Bandwidth (per second/per student)	Proctor Cache Recommendation	Infrastructure Trial Information
1000 kilobytes (1.0 Mbps) or greater	You will likely not need to proctor cache test content.	<p>School staff should still perform an infrastructure trial for the schools with the least bandwidth to verify that tests can be successfully delivered without the use of proctor caching.</p> <p>ISBE recommends that all schools going without proctor caching conduct infrastructure trials early to verify that that student tests can be downloaded and delivered without issue.</p>
>500 kilobytes < 1000 (1.0 Mbps)	School staff may choose to deliver the assessments without proctor cache.	School staff should conduct infrastructure trials at the school and simulate the maximum number of concurrent test takers who will test during the window.
>100 kilobytes < 500 kilobytes	The school's network is a marginal candidate for delivering the assessments without the aid of proctor cache.	School staff should conduct infrastructure trial that simulates 120% of the maximum number of concurrent test takers who will test during the window.



Infrastructure Trial

Infrastructure Trial Benefits

An Infrastructure Trial is a “dress rehearsal” for online testing. It does not have to use real student information and is completed in the PearsonAccess^{next} IAR Training Site.

This is a low-stakes, dry run for confirmation that:

- TestNav is configured correctly
- Devices can successfully run TestNav
- Network will bear the full load
- Participating staff know what to do for computer-based assessments
- Students are familiar with the computer-based tools and format

Refer to the Illinois Infrastructure Trial Guide at
<https://il.mypearsonsupport.com/technology-setup/>

Infrastructure Trial Checklist

1. Ensure the latest version of TestNav is installed on student devices.
2. Make sure Proctor Cache is not enabled.
3. Generate the necessary number of sample students in your training environment to ensure enough test logins for all student devices in your school or the maximum number of concurrent test takers you anticipate.
 - a. *(Generate sample students via the Generate Sample Students wizard in PearsonAccessNext, or by uploading sample students to the Training Site.)*
4. Create Test Sessions. (not needed if you upload)
5. Assign Sample Students to Test Sessions. (not needed if you upload)
6. Prepare and Start the Test Session(s).
7. Print testing tickets.
8. Run App Check.
9. Unlock test unit.
10. Have “students” log in and begin working through the practice test simultaneously. Have participants continue answering items and moving from item to item for at least 15 minutes to provide a sustained load on the system.

Proctor Cache Disable

- To disable Proctor Cache delete the IP/port fields and save to disable the use of ProctorCache
- Re-enable Proctor Caching by re-entering the IP/Port Fields back into your TestNav Configuration

DETAILS

School 1 Config Save

Configuration Name*

School 1 Config

Organizations*

☒ SAMPLE SCHOOL 1 (zz001)
☒ SAMPLE SCHOOL 2 (zz002)
☒ SAMPLE SCHOOL 4 (zz004)

Precaching Computers (1) Add

School Caching

Computer Name*

School Caching

☒ Default computer used for sessions

IP Address

Port

Configuration Identifier ⓘ

4YW25NMYBD

Response File Backup Locations

Please use the following format for SFTP file backup location:
sftp://<userid>:<password>@<address>:<port>/path

Windows, Primary Location ⓘ

Use default user directory

Windows, Secondary Location ⓘ

MAC, Primary Location ⓘ

Use default user directory

MAC, Secondary Location ⓘ

Infrastructure Trial Recommendations

- Plan for 20 to 30 minutes of student/participant time.
- Set a date and notify ISBE so ISBE and Pearson can track your success. Plan to complete by the end of January.
 - *wbruce@ISBE.net*
- Plan for the maximum number of simultaneous users anticipated during testing.
 - *i.e., If you test by grade level, set up to test the same number of students in your largest grade level.*
- Set up a session or sessions that have enough students and the same mix (percentage) of “large forms” (TTS, CC).
- If possible, schedule the trial when bandwidth use in your school is highest.
- Plan for a debrief afterwards with those involved.
- ISBE will share/post the monitoring reports ASAP.
- If there were issues, schedule a meeting with a Pearson field engineer
 - <https://calendly.com/il-field-services-engineering>

Infrastructure Trial Monitoring

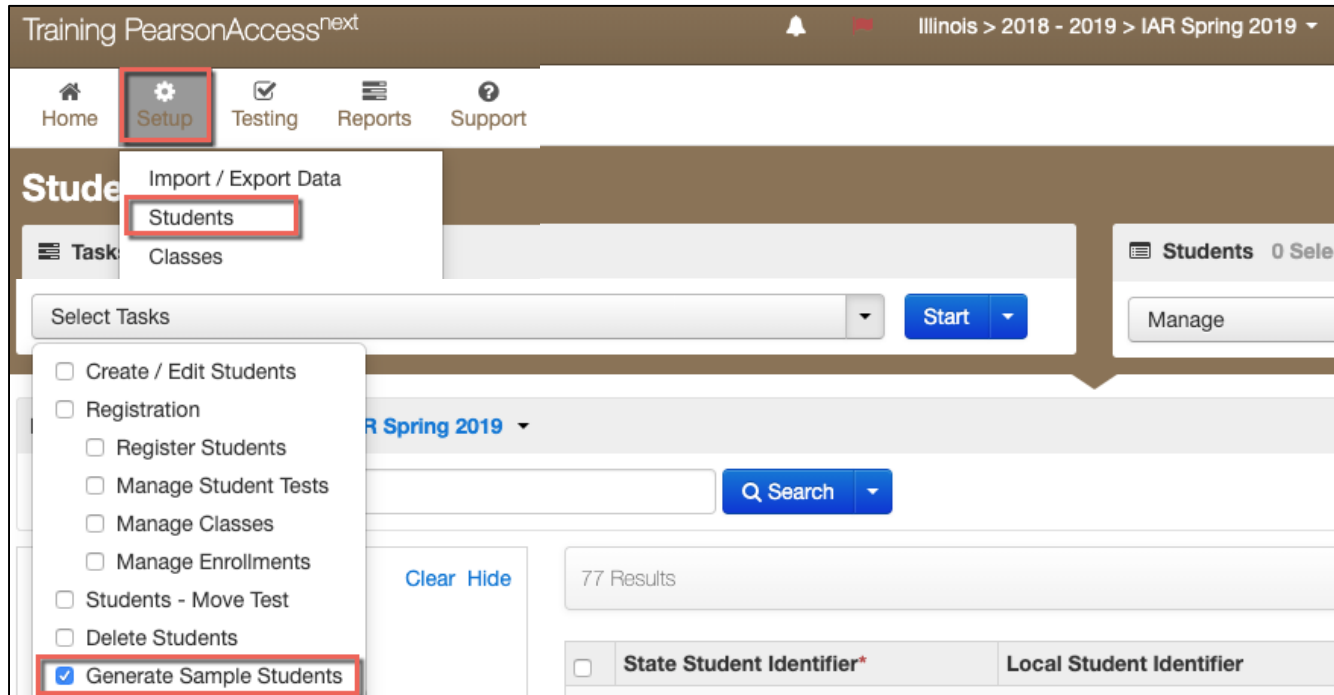
TestNav returns performance data to Pearson

- Available data
 - Logins by org
 - Top errors by org
 - Median test item load time by org
 - Proctor Cache usage by org
 - Proctor Cache bypass by org
- Data supplied to ISBE approximately 5 days after Infrastructure Trial window ends



Infrastructure Trial: Creating Sample Students

Sample students can be created in the Training Center using the Generate Sample Students wizard.



Infrastructure Trial: Creating Sample Students

Training PearsonAccess^{next} Illinois > 2018 - 2019 > IAR Spring 2019

Tasks for Students

Generate Sample Students

Generate Sample Students

Organization*

KJ SAMPLE SCHOOL D... x ▾

[Create New Class](#)

Existing Class Name

K&J CLASS x ▾

Grade Level When Assessed* ⓘ

Third Grade ▾

Test*

Grade 04 Mathematics x ▾

Test Format*

Online ▾

Number of Students*

99 ▾

Between 1 and 99

* Required

Generate **Reset**

Infrastructure Trial: Creating Sample Students

Training PearsonAccess^{next} Illinois > 2018 - 2019 > IAR Spring 2019

Tasks for Students

Generate Sample Students

Success
99 Students Generated successfully.

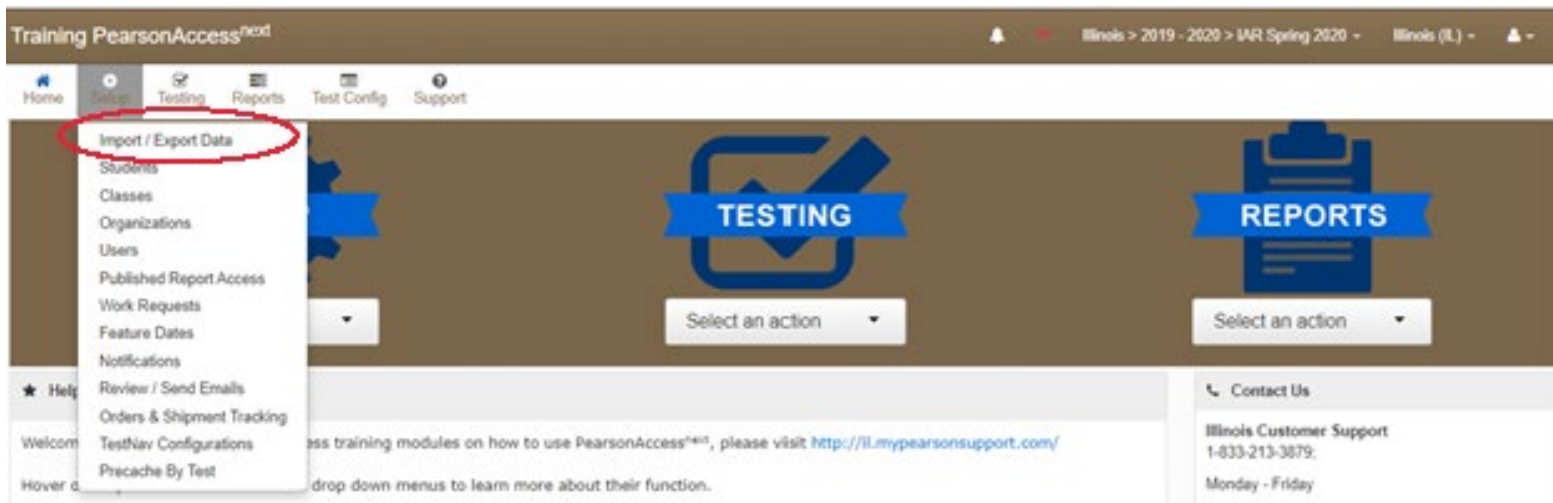
Generate Sample Students

Organization*

[Create New Class](#)
Existing Class Name

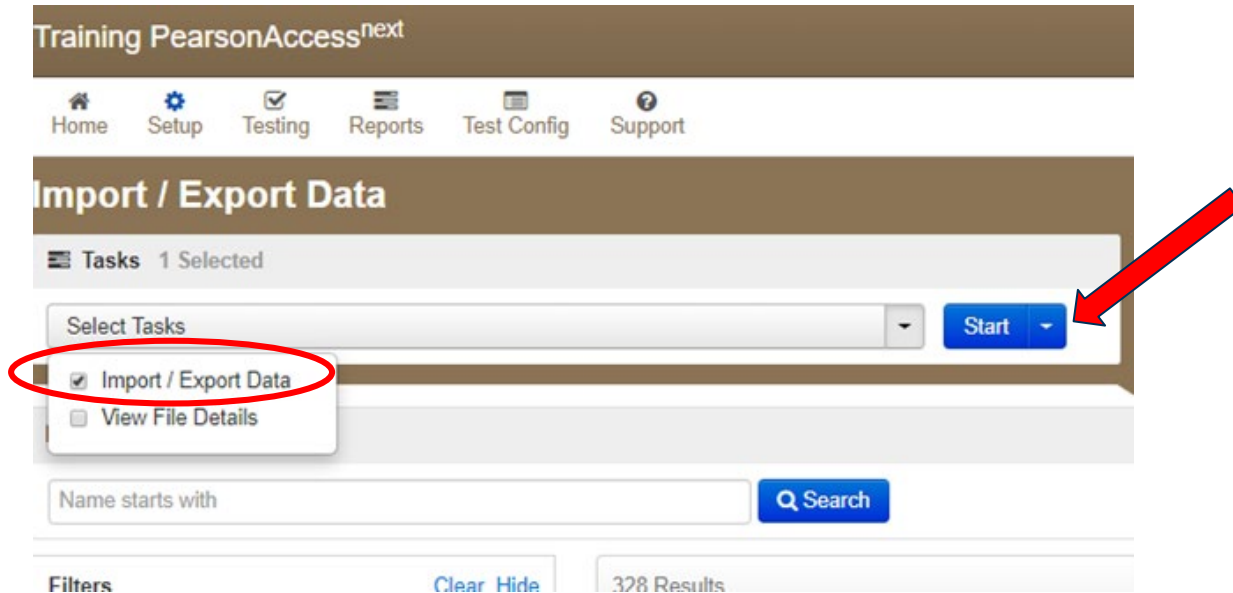
Infrastructure Trial: Uploading Sample Students

Sample students can also be imported into the Training Site using the Student Registration Import.



Infrastructure Trial: Uploading Sample Students

- Select Import/Export data under tasks on the Import/Export Data screen



Infrastructure Trial: Uploading Sample Students

- Choose Student Registration Import for file type

Training PearsonAccess^{next}

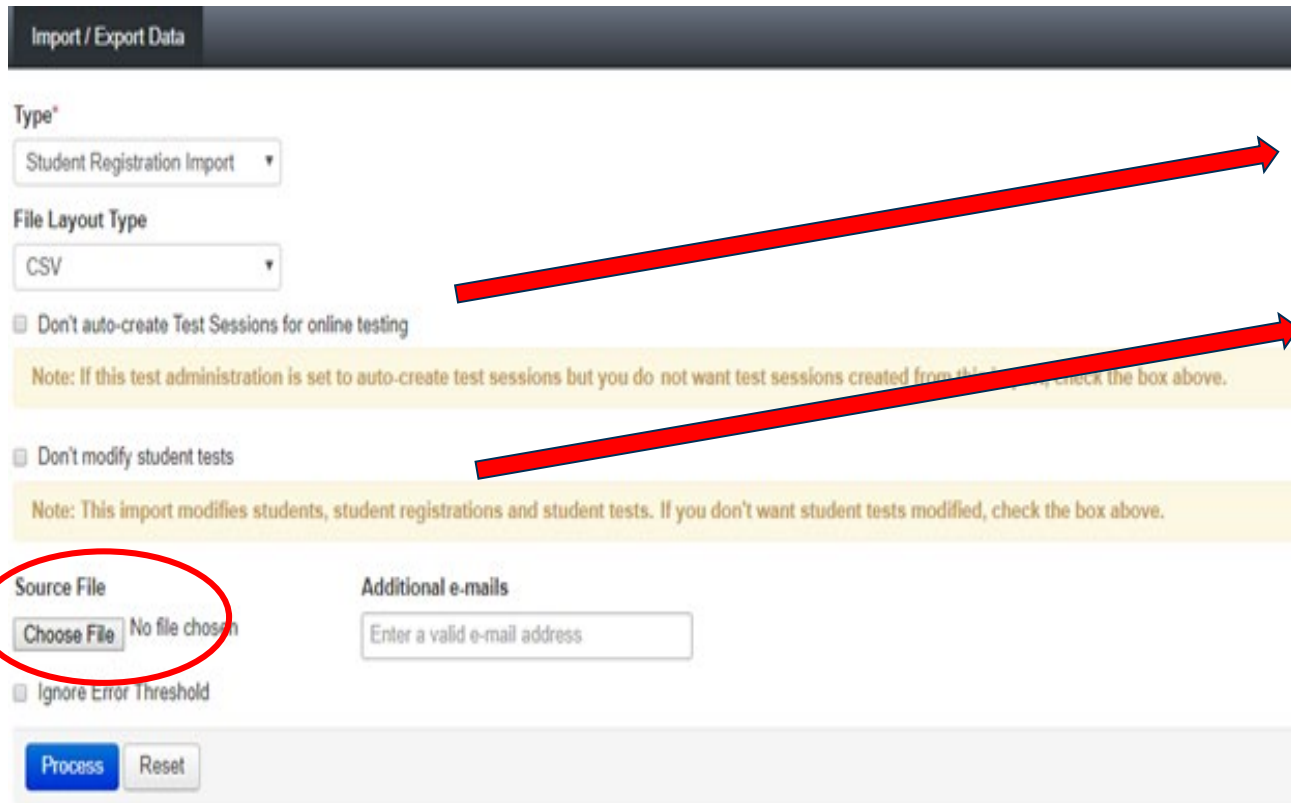
Tasks for Importing and Exporting

Import / Export Data

Type*

Enrollment Transfer Export
Enrollment Transfer Import
Organization Export
Organization Import
Organization Participation Export
Organization Participation Import
Reprocess Rejected Tests
Student Import
Student Registration Delete
Student Registration Export
Student Registration Import
Student Test Reporting Group Export
Student Test Reporting Group Import
Student Test Update Export
Student Test Update Import
Summative File Import
User Export
User Import

Infrastructure Trial: Uploading Sample Students



The screenshot shows the 'Import / Export Data' interface. It includes a 'Type*' dropdown menu set to 'Student Registration Import', a 'File Layout Type' dropdown menu set to 'CSV', and two checkboxes: 'Don't auto-create Test Sessions for online testing' and 'Don't modify student tests'. Both checkboxes are accompanied by yellow note boxes. At the bottom, there is a 'Source File' section with a 'Choose File' button (circled in red) and a 'No file chosen' status, an 'Additional e-mails' section with an input field, and an 'Ignore Error Threshold' checkbox. 'Process' and 'Reset' buttons are at the bottom.

Import / Export Data

Type*

Student Registration Import

File Layout Type

CSV

☐ Don't auto-create Test Sessions for online testing

Note: If this test administration is set to auto-create test sessions but you do not want test sessions created from this import, check the box above.

☐ Don't modify student tests

Note: This import modifies students, student registrations and student tests. If you don't want student tests modified, check the box above.

Source File

Choose File No file chosen

Additional e-mails

Enter a valid e-mail address

☐ Ignore Error Threshold

Process Reset

- File Layout Type: CSV
- Leave blank if creating sessions with this file
- Typically leave blank for training session imports
- Choose your file
- Ignore Error Threshold
 - If this is not checked, the file will stop after 500 errors.



Upcoming Training Dates

Training Dates

Test Administration Webinars

- **Tuesday, January 21, 2020 10:00-11:30 a.m.**
 - geared towards new test administrators (0-2 years in the position)
 - Provide detailed step by step information
- **Tuesday, January 21, 2020 1:30-2:30 p.m.**
 - geared towards experienced users (2+ years in the position)
 - shorter, covering “what’s new” information



Training Dates

Technology Webinars

- **Tuesday, January 28, 2020 10:00-11:30 a.m.**
 - will cover all Technology activities for IAR





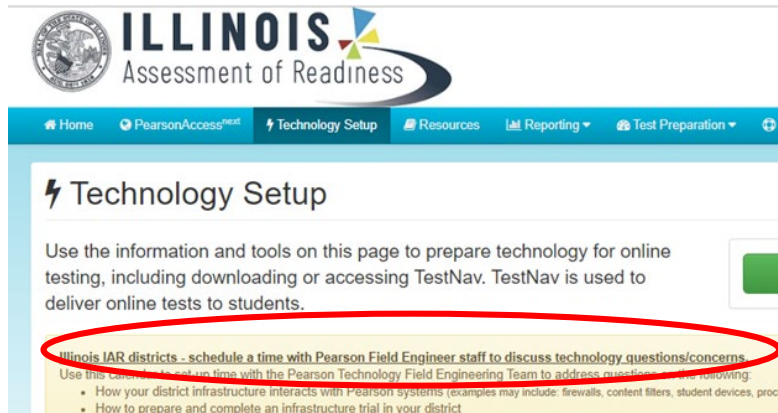
Support

Personalized Technology Support

Pearson Field Engineer staff are available to discuss technology questions/concerns specific to your district and/or school at a time convenient to you.

Calendar available at il.mypearsonsupport.com or <https://calendly.com/il-field-services-engineering> to set-up a personal appointment to discuss any of the following:

- How your district infrastructure interacts with Pearson systems (examples may include: firewalls, content filters, student devices, proctor caching servers, wifi access points, etc.)
- How to prepare and complete an infrastructure trial in your district
- Discuss issues or questions that arose while performing an infrastructure trial
- How to set-up proctor caching in your district
- Other recommendations on online testing set-up for your district or school



ISBE - Pearson Contacts Information

ISBE Assessment & Accountability

866-317-6034

assessment@isbe.net

www.isbe.net/Pages/Assessment.aspx

Pearson Customer Support

833-213-3879

<https://il.mypearsonsupport.com>



Questions / Feedback