

IlliniData Reports Quick Reference Guide

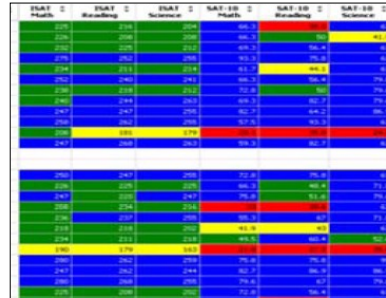
Elementary/Junior High Edition

for a full explanation of these reports, please visit the IlliniData Training portal on Sharepoint

SA1 Student Assessment Summary Report

Characteristics:

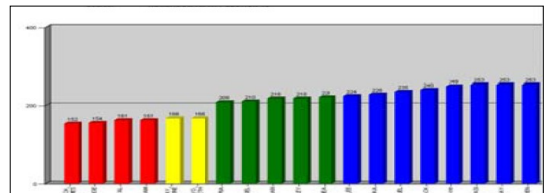
- color-coded spreadsheet
- ISAT, SAT-10, and DIBELS results (no subscores)
- Good way to compare whether interventions determined had an effect between September and March



SA2 Class Benchmark Scores

Characteristics:

- color-coded bar graph
- shows a class at a time
- can be run for this year's and last year's students
- each student is his/her own bar
- variety of tests and subscores can be chosen



SA3 Class Scores/Subscores

Characteristics:

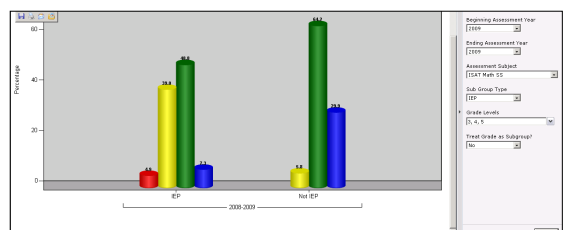
- color-coded spreadsheet
- shows a class at a time
- shows numeric data for entire test, subscores, and extended response items
- variety of tests, subscores, and years can be chosen
- uses labels that coincide with the colors

Current IEP Flag	READING	READING Level	ER READING	ER READING Level	LITERATURE
IEP	167	BELOW STANDARDS	1	ACADEMIC WARNING	6
	216	MEETS STANDARDS	2	BELOW STANDARDS	7
	244	EXCEEDS STANDARDS	3	MEETS STANDARDS	12
IEP	158	BELOW STANDARDS	1	ACADEMIC WARNING	3
IEP	152	ACADEMIC WARNING	1	ACADEMIC WARNING	1
IEP	170	BELOW STANDARDS	1	ACADEMIC WARNING	5
	244	EXCEEDS STANDARDS	2	BELOW STANDARDS	12
	195	MEETS STANDARDS	2	BELOW STANDARDS	6
IEP	170	BELOW STANDARDS	2	BELOW STANDARDS	3
	178	BELOW STANDARDS	2	BELOW STANDARDS	3
	220	MEETS STANDARDS	2	BELOW STANDARDS	10
	195	MEETS STANDARDS	2	BELOW STANDARDS	4

SR5 Assessment by Performance Levels

Characteristics:

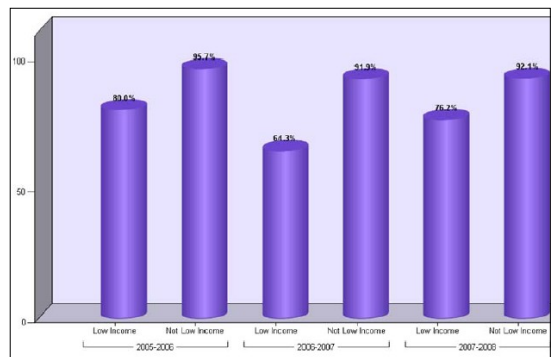
- color-coded bar graph
- allows you to choose one grade or several grades to show
- compares subgroups to non-subgroups
- variety of tests, subscores, and years can be chosen
- grade can be made into a subgroup



SR6 Group and Subgroup Percentages

Characteristics:

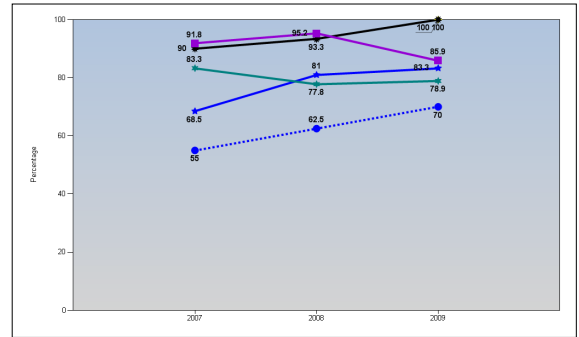
- bar graph; bar colors have no meaning
- allows you to choose one grade or several grades to show
- compares subgroups to group
- variety of tests, subscores, and years can be chosen
- grade can be made into a subgroup
- shows only meets/exceeds percentages



SR7 Benchmarks and AYP Percentages

Characteristics:

- line graph
- allows you to choose one grade or several grades to show
- a good way to examine achievement gap
- variety of tests, subscores, and years can be chosen
- grade can be made into a subgroup



All reports can be exported into Excel

Many reports are sortable within the IlliniData system

Performance levels are indicated by color:

- Academic Warning, Intervene, Developing, At Risk, Deficit, Attempting
- Below Standards, Support, Some Risk, Emerging
- Meets Standards, Monitor, Meeting, Low Risk, Established, Progressing
- Exceeds Standards, Extend, Exceeding, Attaining

Note: SS = compares scale scores to state benchmarks, and then applies the performance level indicators (colors). RS = compares raw scores to local district benchmarks, and then applies the performance level indicators (colors).

Scale Score Ranges that Define Student Performance Levels on the 2009 ISAT Scales

ISAT READING				
GRADE	Academic Warning (W) Level 1	Below Standards (B) Level 2	Meets Standards (M) Level 3	Exceeds Standards (E) Level 4
3	120-155	156-190	191-226	227-329
4	120-157	158-202	203-236	237-341
5	120-160	161-214	215-246	247-351
6	120-166	167-219	220-256	257-360
7	120-173	174-225	226-266	267-369
8	120-179	180-230	231-277	278-364
ISAT MATHEMATICS				
GRADE	Academic Warning (W) Level 1	Below Standards (B) Level 2	Meets Standards (M) Level 3	Exceeds Standards (E) Level 4
3	120-162	163-183	184-223	224-341
4	120-171	172-199	200-246	247-355
5	120-179	180-213	214-270	271-369
6	120-193	194-224	225-275	276-379
7	120-206	207-234	235-280	281-392
8	120-220	221-245	246-287	288-410
ISAT SCIENCE				
GRADE	Academic Warning (W) Level 1	Below Standards (B) Level 2	Meets Standards (M) Level 3	Exceeds Standards (E) Level 4
4	120-157	158-186	187-236	237-363
7	120-196	197-213	214-259	260-390
ISAT WRITING				
GRADE	Academic Warning (W) Level 1	Below Standards (B) Level 2	Meets Standards (M) Level 3	Exceeds Standards (E) Level 4
3	6-13	14-20	21-27	28-33
5	6-13	14-20	21-27	28-33
6	6-13	14-20	21-27	28-33
8	6-14	15-20	21-27	28-33

Local Benchmarks for Subscores (RS):

90%+ : Exceeds

70-89% : Meets

50-69% : Below

Below 50% :

Academic Warning

SAT-10 NCE Indicators:

55.01-100 : Extend

48.01-55 : Monitor

40-48 : Support

0-39.99 : Intervene