



# Illinois State Board of Education

## Assessment and the Invest in Kids Act

Illinois State Board of Education

# ISBE Assessment Website

🏠 > Assessment

## Assessment

- Invest in Kids Act - Assessment
- Communications
- Dynamic Learning Maps Alternate Assessment (DLM-AA)
- Illinois Assessment of Readiness (IAR)
- Illinois Science Assessment (ISA)
- National Assessment of Educational Progress (NAEP)

## ASSESSMENT

The federal Every Student Succeeds Act requires states to assess their learning standards for English language arts (ELA), mathematics, and science. Each state may also have a general assessment for the majority of its students, and an alternate assessment for the 1 percent of students with the most significant cognitive disabilities. ESSA also requires that English learners be assessed in four domains (reading, writing, speaking and listening) each year until they reach proficiency.

Communications

IAR

SAT®  
PSAT™ 10  
PSAT™ 8/9

ISA

DLM-AA

ACCESS

NAEP

KIDS







Invest in Kids Act

Accountability  
Technical Advisory  
Committee (TAC)

Assessment Survey  
Results

Support &  
Accountability

## RESOURCES

- Illinois Science Assessment Federal Waiver - Fact Sheet 
  - Guidance for 15-year-old students with IEPs in Elementary School Districts 
  - Grade 12 SAT and DLM-AA: Who must test? (Updated 09/11/19) 
  - 2019-20 State Assessment Dates 
  - Assessment Security Monitoring Survey
  - Middle Grades Longitudinal Study of 2017-18 
  - Physical Fitness Assessment 
  - Reason for No Valid Attempt
- IAR SAT PSAT 10 PSAT 8/9



Assessment System Feedback



Illinois  
State Board of  
Education

# ISBE Invest in Kids Assessment Site

## News and Updates

- [Invest in Kids Testing Site Establishment Form](#)  
*(Please ensure that you are not logged into a Microsoft O365 environment before clicking this link.)*  
All schools must complete this testing site establishment form (Deadline: January 10, 2020)

## Resources and Documents

### Illinois Assessment of Readiness: Grades 3-8

- *Information Coming Soon!*

### PSAT 8/9, PSAT 10, and SAT: Grades 9, 10, and 11, respectively

- Manuals
  - SAT Manual - *Coming Soon!*
  - PSAT 10 Manual - *Coming Soon!*
  - PSAT 8/9 Manual 
- Student Guides
  - SAT 
  - PSAT 10 
  - PSAT 8/9 
- General Timeline- *Coming Soon!*
- Off-Site Testing Information- *Coming Soon!*

## Presentations and Webinars

- December 17, 2019: Invest in Kids Act Webinar – Assessing Students in Grades 9, 10, and 11  
ISBE and College Board staff will share detailed information regarding test site establishment, materials orders,



# Which tests? Which kids?

## Grades 3 - 8

- Illinois Assessment of Readiness (IAR)

## Grades 9, 10 and 11

- Grade 9 = PSAT 8/9
- Grade 10 = PSAT 10
- Grade 11 = SAT with Essay

**Can I test non-scholarship students? Yes**

# **STATE-SPONSORED SAT<sup>®</sup>, PSAT<sup>™</sup>10, and PSAT<sup>™</sup>8/9**



**Illinois**  
State Board of  
Education

# SAT School Day Test Dates

SAT Administration	Option 1: SAT April Administration	Option 2: SAT March Administration
SAT Primary Test Date	Tuesday, April 14, 2020	Wednesday, March 25, 2020
SAT Makeup Test Date	Tuesday, April 28, 2020	Tuesday, April 28, 2020
SAT Accommodated Test Window	April 14-27, 2020	March 25-April 7, 2020

- Most students will be required to test on a single day. Students with accommodations that require extending testing time beyond a standard school day or require a separate setting or test format will have an accommodated window to complete testing.
- Option 2 is available to schools out of session April 13-17 or for which April 14 is the first day back in session.

# PSAT 10 and PSAT 8/9 Test Dates

<b>PSAT 10 and PSAT 8/9 Administration</b>	<b>Option 1: Schools in Session April 13-17</b>	<b>Option 2: Schools NOT in Session April 13-17</b>
PSAT 10 and PSAT 8/9 Primary Test Date	April 14, 15, or 16, 2020	April 20, 21, or 22, 2020

- PSAT 10 and PSAT 8/9 must be administered within the same selected option. Schools cannot split testing between April 14-16 (Option 1) and April 20-22 (Option 2).
- Students in the same grade level must participate in the assessment on the same day.

# Before Test Day

Activity	April Timeline	March Timeline (SAT School Day only)
Establishment Survey Deadline	January 10, 2020	January 10, 2020
Offsite Testing: <a href="#">Offsite Testing Link</a>	December 20, 2019	December 20, 2019
Request Accommodations:	<p>Now - February 24, 2020 for SAT School Day*</p> <p>*Deadline to request extended time for EL Learners: March 6, 2020 for SAT School Day</p> <p>Now-February 21, 2020 for PSAT 10 and PSAT 8/9*</p> <p>*Deadline to request extended time for EL Learners: February 28, 2020 for PSAT 10 and PSAT 8/9</p>	<p>Now - February 4, 2020*</p> <p>*Deadline to request extended time for EL Learners: February 21, 2020</p>
AI Code Establishment Follow-Up	Now-January 2020	Now-January 2020
Deadline to Order SAT School Day Materials: Standard and Nonstandard	March 6, 2020	February 21, 2020
Final Deadline to Order PSAT 8/9 & PSAT 10 Materials: Standard and Nonstandard	<p>February 28, 2020*</p> <p>*Select the preadministration option on the ordering website by February 14 to receive answer sheets and coordinator manuals by March 13, 2020 for PSAT 10 &amp; PSAT 8/9.</p>	N/A



# Before Test Day

Activity	April Timeline	March Timeline (SAT School Day only)
Test Day Online Training for SAT School Day Test Day Online Training for PSAT 10 and PSAT 8/9 is optional.	Early March – Early April for SAT School Day	Mid February – Mid March for SAT School Day
Preadministration Materials & Student Guides in Schools for SAT School Day  Preadministration Materials & Students Guides in Schools for PSAT 10.  Digital versions of Student Guides for PSAT 8/9 available: <a href="https://collegereadiness.collegeboard.org/pdf/psat-8-9-student-guide.pdf">https://collegereadiness.collegeboard.org/pdf/psat-8-9-student-guide.pdf</a>	March 31-April 2 for SAT School Day  April 6 for SAT PSAT 10 & PSAT 8/9*  *March 13, 2020 if preadministration materials were ordered by February 14, 2020.	March 10-12 for SAT School Day
Conduct Preadministration Session for SAT School Day, PSAT 10, and PSAT 8/9.	Mid-March-April 13, 2020	March 13-March 24, 2020

# After Test Day

Activity	April Timeline	March Timeline (SAT only)
Test Materials in Schools	April 7-10, 2020 for SAT School Day April 6, 2020 for PSAT 10 & PSAT 8/9	March 18-23, 2020 for SAT School Day
Test Administration	SAT School Day: April 14, 2020 PSAT: April 14, 15, or 16, 2020 PSAT (Alternate): April 20, 21, or 22, 2020	SAT School Day March 25, 2020
Return Test Materials	April 14-15, 2020 for SAT School Day Option 1: April 17, 2020 for PSAT 8/9 & 10 Option 2: April 22 for PSAT 8/9 & 10	March 25-26, 2020 for SAT School Day
Window to order test books for SAT makeup test	April 14-16, 2020 for SAT School Day	March 25-27, 2020 for SAT School Day
Makeup SAT Test Materials in Schools	April 21-24	April 21-24
Makeup SAT Test Administration	April 28, 2020	April 28, 2020
Final Makeup SAT Materials Return for Scoring	April 28-29, 2020	April 28-29, 2020



# Accommodations

**For an on-demand training on SSD, visit:**

- <https://accommodations.collegeboard.org/webinar-understanding-accommodations-process>

**For more information on submitting requests in SSD, visit:**

- <https://accommodations.collegeboard.org/ssd-online/submit-requests>

**For more information on managing accommodations, visit:**

- <https://accommodations.collegeboard.org/ssd-online/manage-accommodations>

# Overview of College Board's Test Ordering System

This guidance is provided for high schools that are not established as part of the ISBE SAT, PSAT 10, PSAT 8/9 administrations.

National SAT School Day  
Customer Service  
Number for Educators:  
**888-SAT-HELP**

National PSAT Customer  
Service Number for  
Educators: **888-477-  
7728**

- **Schools and districts order PSAT 8/9, PSAT 10, and SAT School Day tests through the College Board Test Ordering System:**  
<https://professionals.collegeboard.org/test-ordering-services>
- The Test Ordering System is available now for placing orders for the March SAT School Day and April test administrations, as well as April PSAT 10 and PSAT 8/9 administrations.
- Within the Test Ordering System, coordinators are able to manage several processes for PSAT 8/9, PSAT 10, and SAT.
  - Place and manage standard and nonstandard test orders
  - Order student guides for SAT School Day and PSAT 10
  - Verify materials ordered
  - Request SAT School Day benefits for low-income students
  - Order test materials for the makeup date (SAT School Day only)
  - Complete the invoicing process



# Educator Professional Log-In

## Requirements for Ordering:

- Level 2 Attending Institution (AI Code)
- College Board Professional Educator Account
- Test Ordering Access Code

- In order to place an order for a school, a school must have an authorized Level 2 AI Code. If a school does not have a Level 2 AI Code, the school must apply for one through ETS: <https://www.ets.org/>. In Illinois, the six-digit code begins with 14.
- Schools can locate AI Codes at: <https://collegereadiness.collegeboard.org/k-12-school-code-search>.
- To place orders in the Test Ordering System, a coordinator must have the following:
  - College Board Educator Professional Account. If the coordinator is creating an account for the first time, the coordinator will need the school's 6-digit Level 2 AI Code.
  - Test Ordering Access Code. If a test coordinator needs the Test Ordering Access code, PSAT/SAT Customer Service should be contacted.
- If a test coordinator has previously placed exam orders in the Test Ordering System, there is no need to create a new account.



Illinois  
State Board of  
Education

# Brain Break – Questions?

14



**Illinois**  
State Board of  
Education

# **IAR**

## **ILLINOIS ASSESSMENT OF READINESS**



**Illinois**  
State Board of  
Education

# Published Test Dates - IAR

16

<b>IAR for Grades 3-8</b> (Illinois Assessment of Readiness)						
<b>Content Area</b>	Grade 3	Grade 4	Grade 5	Grade 6	Grade 7	Grade 8
<b>ELA/Literacy</b>	✓	✓	✓	✓	✓	✓
<b>Mathematics</b>	✓	✓	✓	✓	✓	✓
<b>Test Dates:</b>	<b>ONLINE: March 11, 2020 (earliest) - April 24, 2020 (last day to test)</b> <b>PAPER: March 11, 2020 (earliest) - April 17, 2020 (last day to test)</b>					

- Note: Paper window ends 1 week earlier than online
- Why start on Wednesday?
  - Daylight Savings is Sunday, March 8. Kids need time to adjust.
- Why end on the 24<sup>th</sup> (not 30<sup>th</sup>) & why end paper early?
  - To speed the return of results





# Top Ten - Test Administrator Tasks

17

1. Establish an account for yourself as district/school test coordinator in PearsonAccessnext (PAN)
2. Check network/computers for compatibility with PAN and TestNav
3. Load student information into PAN
4. Install Proctor Cache software (IF needed)
5. Create accounts for test administrators in PAN
6. Place students in test sessions in PAN
7. Prepare test sessions
8. Start test sessions
9. Stop test sessions
10. Return any secure materials to Pearson

# Platform – Pearson ACCESSNext

18

PearsonAccess<sup>next</sup>

[Home](#) [Support](#)



## ★ Program Information



### ILLINOIS ASSESSMENT OF READINESS (IAR)

The IAR assesses progress of students in grades 3-8 in meeting the Illinois Learning Standards in English language arts and mathematics.

- Allows students to demonstrate what they know and can do in math and English language arts
- Provides a measure of college and career readiness for students
- Contains high-quality test items that measure the full range of state adopted standards
- Assists educators in supporting student learning
- Makes use of technology in assessments, and advances accountability at all levels

### Features

PearsonAccess serves as the entry point to all Pearson services used by school districts.

## Sign In

[Sign In](#)

[Forgot Username](#) | [Forgot Password](#)

## Contact Us

### Illinois Customer Support

1-833-213-3879

Monday - Friday

6:00 am - 6:00 pm (CT)

## Related Links

- [Help and FAQs](#)
- [PearsonAccess<sup>next</sup> Training Site](#)
- [Practice Tests](#)
- [Illinois Pearson Customer Portal](#)



State Board of  
Education



## Home

The Illinois Assessment of Readiness (IAR) assesses progress of students in grades 3-8 in meeting the Illinois Learning Standards in English language arts and mathematics.

This site hosts all of the tools necessary for Test Coordinators, Technology Coordinators, and Test Administrators to prepare for and administer assessments.



### PearsonAccess<sup>next</sup>

Sign in to PearsonAccess<sup>next</sup> for all administrative tasks for test administration.

[View PearsonAccess<sup>next</sup> »](#)

### Technology Setup

Prepare your system for online assessments.

[View Technology Setup »](#)

### Resources

Access trainings, manuals, and other resources to prepare for and administer assessments.

[View Manuals, Training Modules, and Documents »](#)

### Test Preparation

Users can access sample items, TestNav 8 tutorials, and practice tests to prepare for the tests.

[View Test Preparation ▾](#)

### Reporting

Access a variety of reporting resources from interpretive guides, to report samples, and file layouts.

[Reporting ▾](#)

### Support

Assistance is available via email, chat, or phone.

[View Support »](#)

## ★ Key Dates - Spring 2020

IAR Spring 2020 Testing Window - online testing	3/11/2020 - 4/24/2020
IAR Spring 2020 Testing Window - paper testing	3/11/2020 - 4/17/2020



# Platform – TestNav

## TestNav System Requirements

TestNav App OS support changes

- Chrome OS dropped support prior to version 74
- iOS dropped support prior to version 12

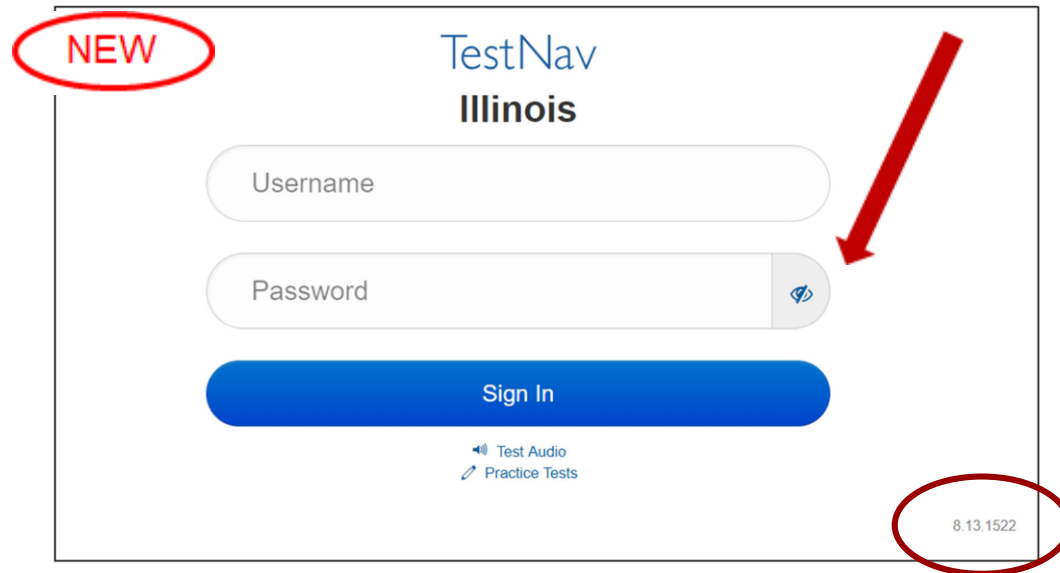
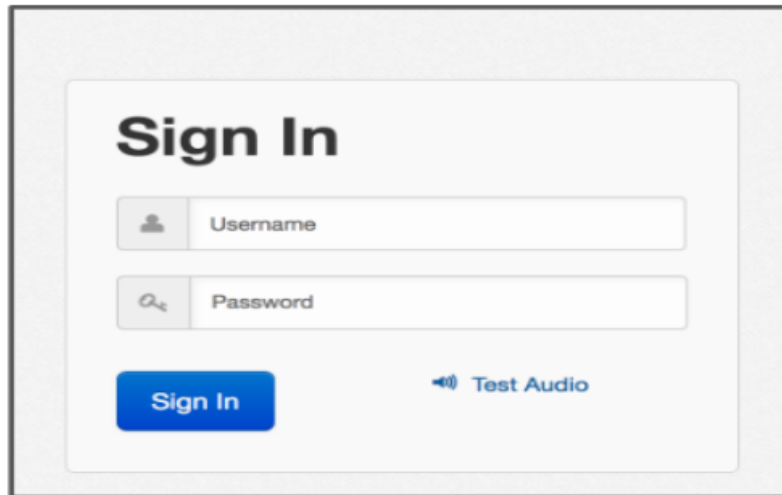
## ProctorCache System Requirements

Operating System	Version	Memory
Windows	7, 8.1, 10 version	Recommended: 4GB RAM Minimum: 2 GB RAM
Mac	OS X/macOS: 10.12, 10.13, 10.14 & 10.15 iOS 12 - 13.1x	Recommended: 4 GB RAM Minimum: 2 GB RAM
Chrome OS	74 - 78	Recommended: 4GB RAM Minimum: 2 GB RAM
Linux	Fedora 24 (64-bit); Ubuntu 18.04 (64-bit)	Recommended: 2 GB RAM Minimum: 1 GB RAM

## PearsonAccess Next Support

# TestNav Updates

- TestNav App version number will now display 8.13.x (lower right of login screen)
- TestNav App updates
  - Updated look and feel of the login screen.
  - Added the ability to show/hide the password characters.



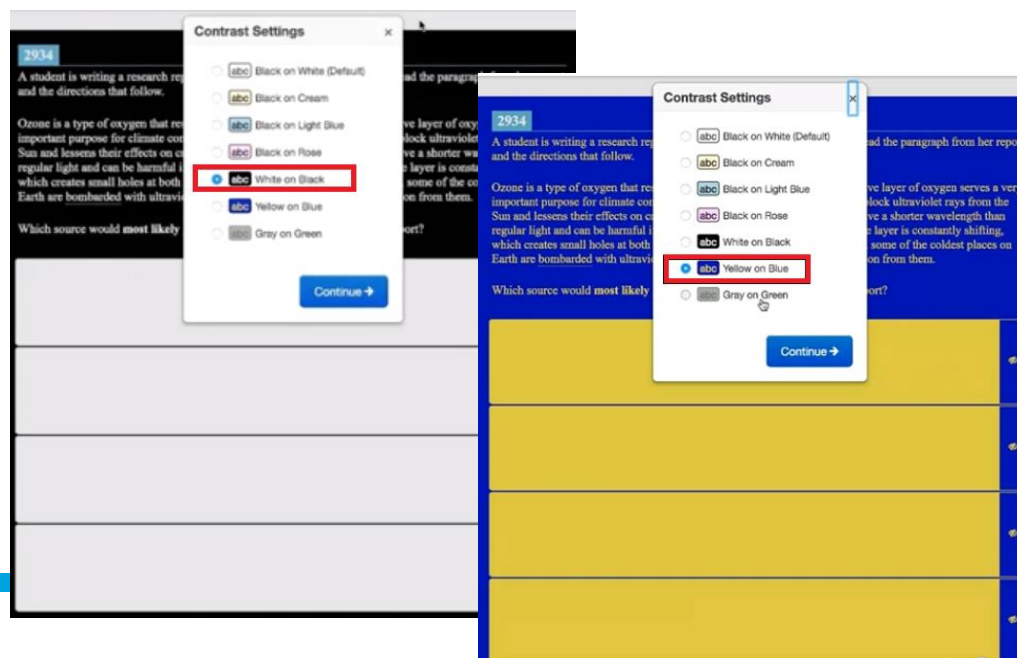
# Answer Mask & Color Contrast Setting

- Updated Answer Mask tool to honor Color Contrast settings
  - Students will see in accordance with Accessibility standards

**Before: Answer Mask**  
always appeared as...

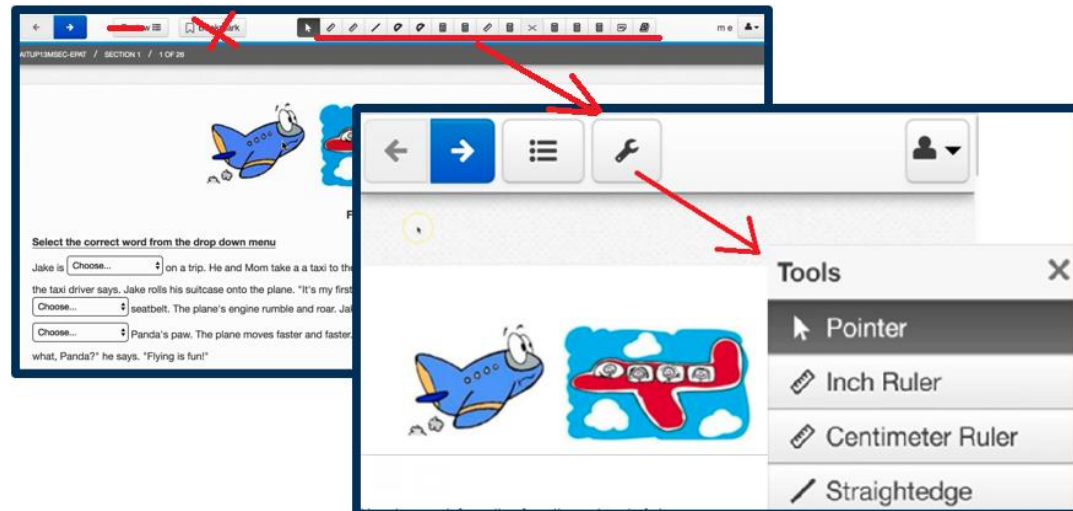


**Now: Answer Mask honors all Color Contrast settings**



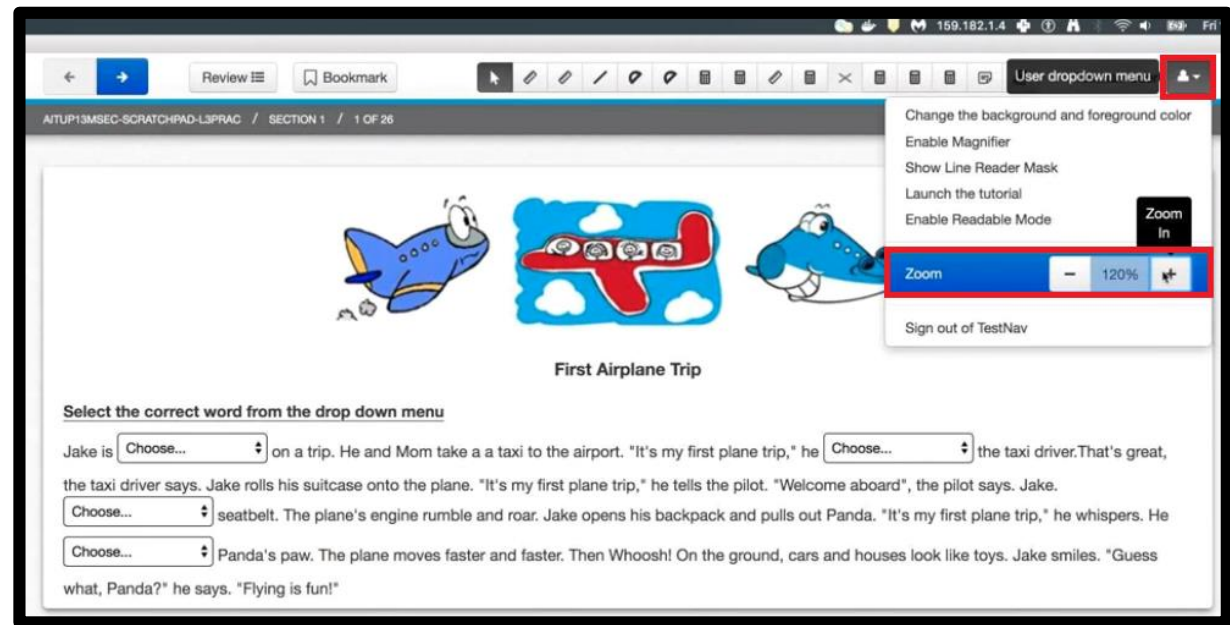
# High Level Zoom

- Enhanced Usability at High Level
  - When to a high level (width of the view is less than 480px)
    - Wrench icon appears and tools appear when wrench selected
    - Content spans from left to right boundary (eliminating left/right scrolling)
    - Padding removed from body of the item presentation
    - Username removed
    - Breadcrumbs removed
    - “Review” text removed
    - Bookmark button is not shown



# Zoom via UI Controls

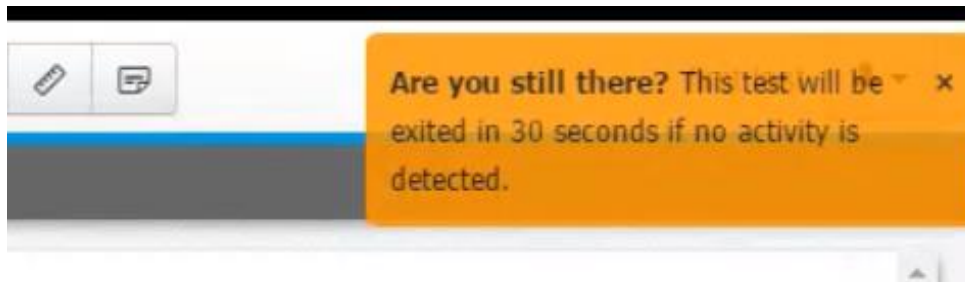
- Desktop and Chromebook app can include UI Zoom control
  - Limits to 250x
  - Not on iOS as those platforms use the pinch & zoom method





# Inactivity Timer

- Implementing for security purposes
- 30 second warning prior to app shut down

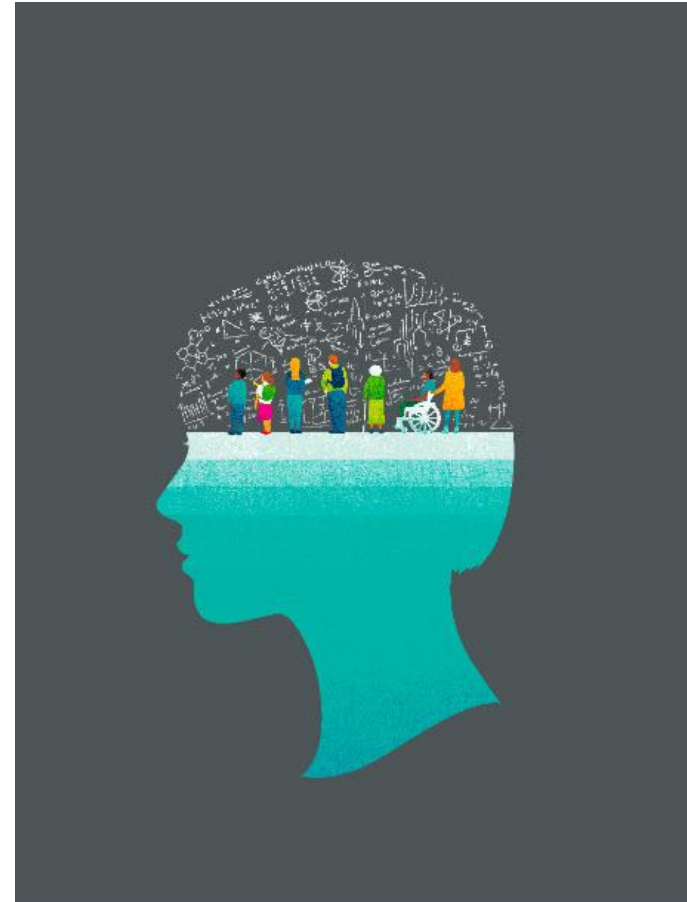


- Timer will be set for 20 minutes

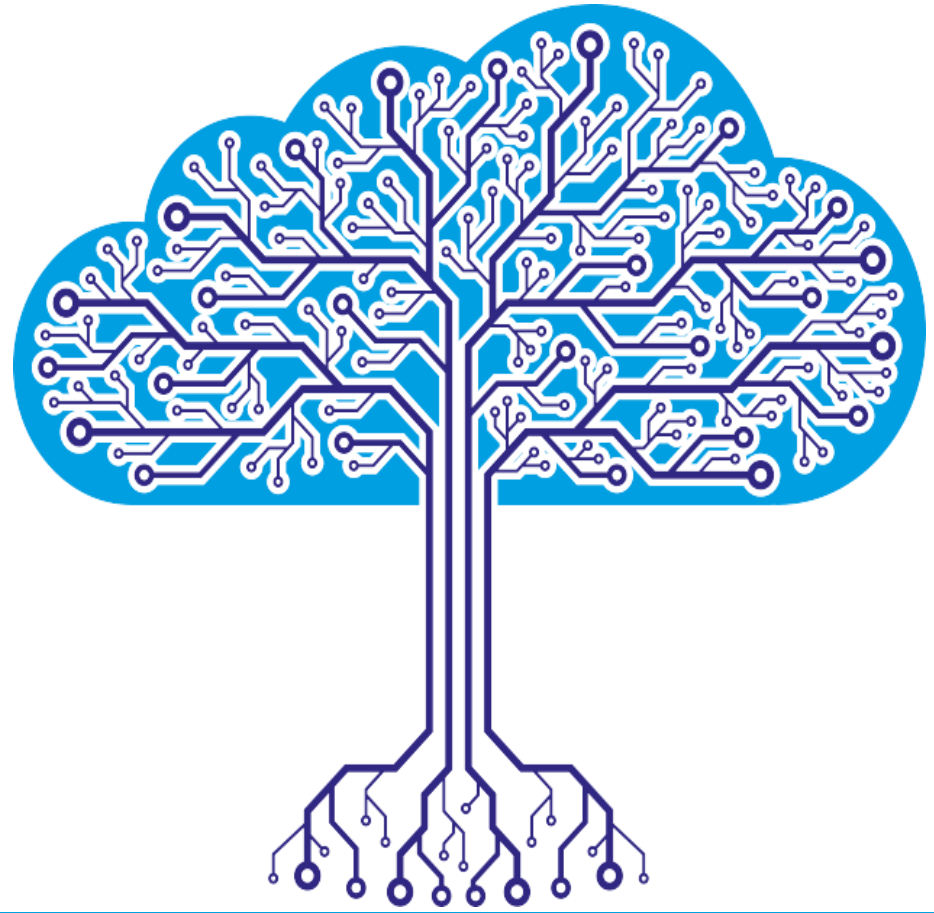
# Proactive Monitoring During Live Assessments

Pearson has visibility into testing performance for Illinois at the state, district, and school level to identify issues early and allow for proactive troubleshooting and rapid remediation.

In some cases, if Pearson observes a higher than expected rate of errors, Pearson may proactively reach out to the district to inform and discuss resolution.



# Proctor Cache



# Proctor Cache History

Originally developed in 2001, to support environments with:

- Limited Internet bandwidth
- Unreliable connectivity to the Internet
- Tests with large media files (audio/video)



# Proctor Cache Today

## Factors reducing the need/benefit of Proctor Caching:

- High-speed Internet access now more readily available in all schools.
- School Internet connectivity more stable. In many cases multiple carriers supply Internet access for a district.
- Media files now common place both in testing and daily learning in a school. Schools and districts are moving away from web content caching themselves as their bandwidth has increased.



# Bandwidth Recommendations for Proctor Cache & Infrastructure Trial

Network Bandwidth (per second/per student)	Proctor Cache Recommendation	Infrastructure Trial Information
1000 kilobits (1.0 Mbps) or greater	You will likely <b>not</b> need to proctor cache test content.	School staff should still perform an infrastructure trial for the schools with the least bandwidth to verify that tests can be successfully delivered without the use of proctor caching.  ISBE recommends that all schools going without proctor caching conduct infrastructure trials early to verify that that student tests can be downloaded and delivered without issue.
>500 kilobits < 1000 (1.0 Mbps)	School staff may choose to deliver the assessments without proctor cache.	School staff should conduct infrastructure trials at the school and simulate the maximum number of concurrent test takers who will test during the window.
>100 kilobits < 500 kilobits	The school's network is a marginal candidate for delivering the assessments without the aid of proctor cache.	School staff should conduct infrastructure trial that simulates 120% of the maximum number of concurrent test takers who will test during the window.



# Personalized Technology Support

Pearson Field Engineer staff are available to discuss technology questions/concerns specific to your district and/or school at a time convenient to you.

Calendar available at [il.mypearsonsupport.com](https://il.mypearsonsupport.com) or <https://calendly.com/il-field-services-engineering> to set-up a personal appointment to discuss any of the following:

- How your district infrastructure interacts with Pearson systems (examples may include: firewalls, content filters, student devices, proctor caching servers, wifi access points, etc.)
- How to prepare and complete an infrastructure trial in your district
- Discuss issues or questions that arose while performing an infrastructure trial
- How to set-up proctor caching in your district
- Other recommendations on online testing set-up for your district or school



# IAR - Technology



**ILLINOIS**  
Assessment of Readiness

[Home](#)[PearsonAccess<sup>next</sup>](#)[Technology Setup](#)[Resources](#)[Reporting ▼](#)[Test Preparation ▼](#)[Support](#)

## ⚡ Technology Setup

Use the information and tools on this page to prepare technology for online testing, including downloading or accessing TestNav. TestNav is used to deliver online tests to students.

[TestNav8 Downloads Page »](#)

### Illinois IAR districts - schedule a time with Pearson Field Engineer staff to discuss technology questions/concerns.

Use this calendar to set-up time with the Pearson Technology Field Engineering Team to address questions on the following:

- How your district infrastructure interacts with Pearson systems (examples may include: firewalls, content filters, student devices, proctor caching servers, wifi access points, etc.)
- How to prepare and complete an infrastructure trial in your district
- Discuss issues or questions that arose while performing an infrastructure trial
- How to set-up proctor caching in your district
- Other recommendations on online testing set-up for your district or school.

Note: During live testing, please call Illinois Customer Support for immediate assistance.

### Technology Requirements

View hardware and software requirements for administering online tests.

[Technology Requirements ▼](#)

List of Chromebooks that have reached Auto Update Expiration (AUE) and will not deliver the IAR in spring of 2020 (see models highlighted in red).

[List of Chromebooks ▼](#)

### Additional Technology Resources

User Guides are product guides to be used by Test Coordinators, Test Administrators, and technology personnel for technical instructions and troubleshooting.

[Additional Technology Resources ▼](#)

**Illinois**  
State Board of  
Education



# IAR – Training Dates

## Test Administration Webinars

- **Tuesday, January 21, 2020 10:00-11:30 a.m.**
  - geared towards new test administrators (1-2 years in the position)
  - Provide detailed step by step information



# IAR – Training Dates

## Technology Webinars

- **Thursday, December 5, 2019 1:30-2:30 p.m.**
  - Specific for districts/schools considering going without a proctor cache system
  - Infrastructure Trial information
- **Tuesday, January 28, 2020 10:00-11:30 p.m.**
  - Will cover all Technology activities for IAR



# Summary of Upcoming Trainings

- **IAR Thursday, December 5, 2019 1:30-2:30 p.m.**
  - IAR Proctor Caching & Infrastructure Trials
    - Specific for districts/schools considering going without a proctor cache system
    - Infrastructure Trial information
  - Test Administration Webinars
- **SAT / PSAT, Tuesday, December 17, 2019: 10:00 – 11:30 a.m.**
  - ISBE and College Board staff will share detailed information regarding test site establishment, materials orders, staffing, and general testing logistics and protocol.
- **Tuesday, January 21, 2020 10:00-11:30 a.m.**
  - Geared towards new test administrators
  - Provides detailed step by step information
- **Tuesday, January 28, 2020 10:00-11:30 p.m.**
  - Will cover all Technology activities for IAR in detail



# Contacts

## ISBE Assessment Department

866-317-6034

[assessment@isbe.net](mailto:assessment@isbe.net)

[www.isbe.net/Pages/Assessment.aspx](http://www.isbe.net/Pages/Assessment.aspx)

## Join our Listserv!

- Assessment Listserv: Send a blank email with “SUBSCRIBE” in the subject line to [assessment@isbe.net](mailto:assessment@isbe.net).



**Illinois**  
State Board of  
Education