

# **Keys to Coding RCDTS Codes**

## **For All Entity Categories**

Updated Spring 2025

# Keys to Coding for Categories 1-9, A-E, G

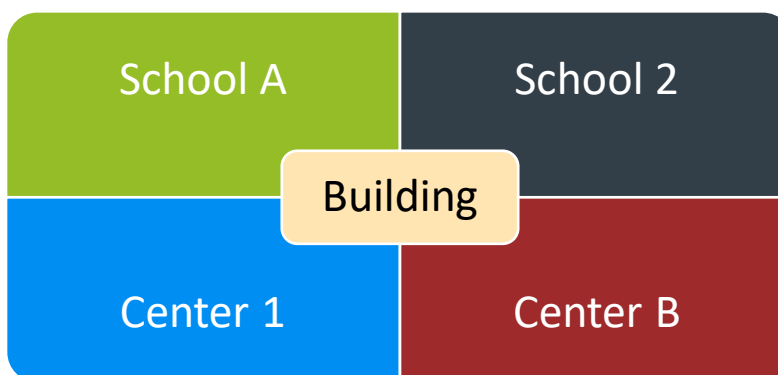
Introduction to RCDTS Codes .....	3
RCDTS Code Definition .....	4
Example RCDTS Code.....	4
Category 1 (Public: Intermediate Service Centers & Regional Offices of Education).....	5
Categories 2 & 4 (Illinois Public School Districts & Schools).....	6
Category 3 (Nonpublic Schools).....	8
Category 5 (Miscellaneous Payee) .....	9
Category 6 (Public Special Education Co-Op Districts) .....	10
Category 7 (Public: Special Education Co-Op Schools).....	12
Category 8 (Public: Other State-Funded Entities & Hybrid High School Districts/Schools).....	13
Category 9 (Public: Area Vocational Districts and Schools).....	14
Category A (Public: Regional Programs).....	15
Category B (State Charter Schools & Payee File for Charter Schools).....	16
State Charter School RCDTS Code .....	16
Payee File RCDTS Code .....	17
Category C (Nonpublic Special Education Operating Agencies) .....	18
Regional Programs .....	18
Category D (Nonpublic Special Education Programs) .....	19
Out-of-State Facilities .....	19
Category E (Early Childhood Attendance Sites) .....	20
Category G (Miscellaneous Non-Payees) .....	21
Region and County Codes.....	22
Regions .....	23
County Codes.....	24
Region and County Code Relations .....	25

## Introduction to RCDTS Codes

Each of the entities that works with the Illinois State Board of Education (ISBE) has a unique 15-character Region-County-District-Type-School (RCDTS) code, which includes numbers and letters.

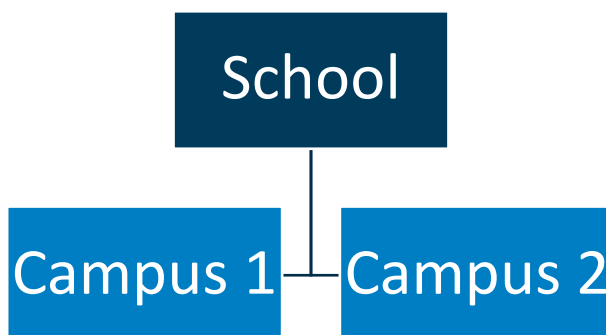
These entities are divided into categories, and each entity category has its own schema for creating and maintaining its RCDTS codes. Hence, that is why there is a section for each category.

Each RCDTS code denotes a specific entity, program, or organization. An RCDTS code does not track facilities or buildings. A building or facility may have multiple RCDTS codes housed within it. For example, an office building can contain multiple organizations even though they are in the same place as shown in the below chart.



Each of these organizations would have its own unique RCDTS code if it is a separate entity.

That said, an entity with multiple facilities and addresses can have a single RCDTS code. For example, a school may have more than one campus. Even though those campuses have different addresses and buildings, they are under the same organization/entity as shown here:



## RCDTS Code Definition

Region and county codes are generally used to describe where in Illinois an entity is located or headquartered. For more information about region and county codes, see [Region and County Codes](#).

District code is the unique number given to each parent or standalone RCDTS code. Each category has its own way of determining and assigning district codes.

Type is used to describe the type of entity within its category. Each category has its own schema and rules for determining type code. For example, the type code for the example RCDTS code in Table 1 denotes that it is a community high school district.

The school code, the final four characters of the RCDTS code, specifies which site or school number it is. Each category has its own schema and rules for determining a school code.

### Example RCDTS Code

Below is a breakdown of a sample RCDTS code of a public school in a public school district:

**Table 1**

Example	Region	County	District	Type	School
<b># of digits/characters</b>	2	3	4	2	4
<b>Lake Park High School in Roselle</b>	19	022	1080	16	0001
<b>Number Descriptor</b>	DuPage Region	DuPage County	Lake Park CHSD 108	Community HS District	School

Complete RCDTS code: 19-022-1080-16-0001

## Category 1 (Public: Intermediate Service Centers & Regional Offices of Education)

Category 1 contains only records for Regional Offices of Education (ROEs) and Intermediate Service Centers (ISCs).

ISCs serve as the equivalent of an ROE for Cook County. The first two numbers of the RCDTS code identify the ROE number. There will be zeros in the school, district, and type categories of the RCDTS code.

Example RCDTS code for an ISC/ROE:

(1)	(2)	(3)	(4)	(5)	
19	000	0000	00	0000	DuPage ROE
1-2	3-5	6-9	10-11	12-15	<b>Data Format Positions</b>
					School = (0000)
					Type = ISC/ROE (00)
					District = ISC/ROE (0000)
					County = ISC/ROE (000)
					Region = DuPage County (19)

1. **Region Code:** A code of two numbers, from 01-56, for the 38 ISC/ROEs. Each region is made up of one or more of the 102 Illinois counties. See [Region Codes](#) section for more details.
2. **County Code:** A code of three numbers; ISC/ROEs are assigned a county code of "000."
3. **District Code:** A code of four numbers; ISC/ROEs are assigned a district code of "0000."
4. **Type Code:** A code of two numbers; ISC/ROEs are assigned a type code of "00."
5. **School Code:** A code of four numbers; ISC/ROEs are assigned a school code of "0000."

## Categories 2 & 4 (Illinois Public School Districts & Schools)

Category 2 contains only records for public school districts, and Category 4 contains only records for public schools that belong to public school districts.

The first 11 numbers (or 10 numbers and one letter) of the code identify the school district; this is sometimes called the RCDT code. (Notice how there is no “S” at the end.) The last four numbers identify the particular school in the district.

All public school district codes have “0000” for their school code. Category 4 entities (public schools) may not have “0000” for their school code.

Example RCDTS code for a public school district:

(1)	(2)	(3)	(4)	(5)	
19	022	1080	16	0000	Lake Park CHSD 108
1-2	3-5	6-9	10-11	12-15	<b>Data Format Positions</b>
					School = District-level entity (0000)
					Type = High School (Community) (16)
					District = Lake Park CHSD 108 (1080)
					County = DuPage (022)
					Region = DuPage (19)

Example RCDTS code for a public school:

(1)	(2)	(3)	(4)	(5)	
19	022	1080	16	0001	Lake Park High School
1-2	3-5	6-9	10-11	12-15	<b>Data Format Positions</b>
					School = Lake Park High School (0001)
					Type = High School (Community) (16)
					District = Lake Park CHSD 108 (1080)
					County = DuPage (022)
					Region = DuPage (19)

- 1. Region Code:** A code of two numbers, from 01-56, for the 38 ROEs. Each region is made up of one or more of the 102 Illinois counties. Region 60 is assigned to the Illinois Department of Juvenile Justice (IDJJ) and Region 65 is assigned to Other State-Funded Public Schools. See the [Region Codes](#) section for more details.
- 2. County Code:** A code of three numbers, from 001 to 102, assigned to each of the 102 Illinois counties in alphabetical order. County 000 is assigned to ISC/ROEs or programs/schools run by ISC/ROEs. County 105 is assigned to the IDJJ, and County 108 is assigned to Other State-Funded Public Schools. See the [County Codes](#) section for more details.
- 3. District Code:** A code of four numbers, or three numbers and one letter, that includes the legal identifier that the school district uses as its district name. If the fourth digit is a 5, the 5 represents one half. For example, River Grove SD 85-5 has a district code of “0855.”

4. **Type Code:** A code of two numbers that identifies the type of district or administrative agent. It contains the 10th and 11th digits in the RCDTS code.

Elementary Districts		High School Districts		Unit Districts		Administrative Agents for Charter Schools	
01	Common	13	Consolidated	22	Old Type	22, 25, 26	District and State-Authorized Charter Districts/Schools
02	Common - Other	15	Charter	24	Community Consolidated	25	State-Authorized Charter District/School
03	Consolidated	16	Community	25	Charter	30	Illinois Department of Juvenile Justice
04	Community Consolidated	17	Township	26	Community Unit		
05	Charter	18	Protectorate	27	Hybrid		
		19	Non-High				

5. **School Code:** A code of four numbers assigned to the school. The first digit indicates the kind of school, and the next three digits are sequential. The first two digits of an ROE school code indicate the type of program, and the last two digits are sequential.

First Digit of School Code	
0	High School
1	Middle/Junior High School
2	Elementary School
3	Special School

## Category 3 (Nonpublic Schools)

Category 3 contains only nonpublic school records.

Category 3 RCDTS codes are structured differently than Category 2 and 4 RCDTS codes. Their RCDTS code is broken down by Region-County-School-Type-Affiliation-Site instead of Region-County-District-Type-School.

The first five characters of a Category 3 RCDTS code identifies its region and county codes -- in short, its geographic location. The next three digits is the school number in its region and county. The type code indicates the grade ranges served or whether it serves special education students. The next two digits (the affiliation code) indicate the affiliation of the nonpublic school. The site code of the nonpublic school record is "0000" for all nonpublic schools.

Example RCDTS code for a nonpublic school:

(1)	(2)	(3)	(4)	(5)	(6)	
41	057	073	X	10	0000	St. Peter and Paul School
1-2	3-5	6-8	9	10-11	12-15	<b>Data Format Positions</b>
						Site = (0000)
						Affiliation = Catholic (10)
						Type = Elementary (X)
						School = St. Peter and Paul School (073)
						County = DuPage (057)
						Region = Madison (41)

- Region Code:** A code of two numbers, from 01-56, for the 38 ROEs. Each region is made up of one or more of the 102 Illinois counties. See the [Region Codes](#) section for more details.
- County Code:** A code of three numbers, from 001-102, assigned to each of the 102 Illinois counties in alphabetical order. See the [County Codes](#) section for more details.
- School Code:** A code of three numbers, which is sequential within each county and region.
- Type Code:** A code of one letter that indicates the grade range served within a school.

Type Code	
X	Elementary (PreK - 8)
Y	Secondary (9 - 12)
Z	Unit (PreK - 12)
S	Special Education (PreK – 12)

- Affiliation Code:** A code of two numbers assigned to certain affiliations.

Affiliation Code			
01	Independent Regular (not affiliated)	15	Other Than Listed
02	Baptist	16	Montessori
03	Christian Schools International (of Michigan)	17	Greek Orthodox
05	Jewish	19	Independent Special Education (not affiliated)
06	Lutheran	20	Illinois Association of Christian Schools
07	Methodist	21	Amish
08	Presbyterian	22	Mennonite
09	Protestant Episcopal	23	Islamic/Muslim
10	Roman Catholic	25	Pentecostal
11	Seventh Day Adventist	26	Association of Christian Schools International of California
14	Other Religious Affiliation	27	Christian Schools of Illinois

- Site Code:** A code of four numbers assigned to the last four digits of the RCDTS code. All nonpublic schools and districts are assigned a site code of "0000."



## Category 5 (Miscellaneous Payee)

Category 5 contains entity records not contained in other record categories. They are categorized as miscellaneous payees of ISBE. The first five numbers of the code identify the region and county. The next four is the district code that is assigned to the entity. The type code indicates what type of miscellaneous payee the entity is. The last four digits of the RCDTS code will be "0000."

Example RCDTS code for a miscellaneous payee:

(1)	(2)	(3)	(4)	(5)	
04	101	074P	00	0000	Community Kitchen Inc
1-2	3-5	6-9	10-11	12-15	<b>Data Format Positions</b>
					School = (0000)
					Type = Miscellaneous (00)
					District = Community Kitchen Inc (074P)
					County = Winnebago (101)
					Region = Boone/Winnebago ROE (04)

- Region Code:** A code of two numbers, from 01-56, for the 38 ROEs. Each region is made up of one or more of the 102 Illinois counties. Region 64 is assigned to private entities and miscellaneous projects. Region 65 is assigned to public entities and other state-funded schools and projects. See the [Region Codes](#) section for more details.
- County Code:** A code of three numbers, from 001 to 102, assigned to each of the 102 Illinois counties in alphabetical order. In addition, the county code of 108 is assigned to entities in both Region 64 and Region 65, which are state businesses or associated with the state of Illinois. See the [County Codes](#) section for more details.
- District Code:** A code of four numbers or three numbers and one letter. The four-digit codes are assigned sequentially by data administrators.

District Code	
5	In the first place identifies a college.
7	In the first place identifies an Education for Employment (EFE) system. The remaining digits identify the specific EFE system as shown in the <a href="#">Area Career Center Directory</a> .
P	In the fourth place identifies schools receiving child nutrition reimbursement, such as day care centers/homes, hospitals, and nursing homes that are not identified in other categories in the Entity Profile System (EPS).
T	In the fourth place identifies the Cook County treasurer.
Alpha in the fourth place and with type code of 59 identifies the public school district where a charter school is located.	

- Type Code:** A code of two numbers that identifies the type of entity or school.

Type Code	
00	"P" schools for child nutrition payees.
41	Special schools.
51	Private and public entities, colleges and universities, the Cook County treasurer, EFE systems, medical facilities, and miscellaneous state-funded schools and projects.
59	Now-defunct type code for charter schools paid directly instead of through public schools. This is for payments only. All teacher, student, and immunization data for a charter school will be collected and recorded by the public school district where the charter school is located.

- School Code:** A code of four numbers will appear in this category except when type code 59 has been assigned for charter schools. The school code under Category 5 in EPS corresponds to the charter school code assigned under the public school where the charter school is located.

## Category 6 (Public Special Education Co-Op Districts)

Category 6 contains records for publicly funded special education co-op districts.

The first five numbers of the code identify the region and county. The next four is the district code that is assigned to the district. The type code indicates the administrative agent of the district. The last four digits of the RCDTS code will be "0000." The first 11 numbers (or 10 numbers and one letter) of the RCDTS code identify the school district. The last two characters of the RCDTS code are always "00" because it's a district.

Example RCDTS code of a public special education co-op district:

(1)	(2)	(3)	(4)	(5)	
07	016	1420	61	6100	Southwest Cook Coop Spec Ed
1-2	3-5	6-9	10-11	12-15	<b>Data Format Positions</b>
					School = Special Education Cooperative (6100). The "00" at the end of the school code denotes that it's a district-level entity.
					Type = Special Education Cooperative (61)
					District = Southwest Cook Coop Spec Ed (1420)
					County = Cook (016)
					Region = Region 07 South Cook ISC 4 (07)

- Region Code:** A code of two numbers, from 01-56, for the 38 ROEs. Each region is made up of one or more of the 102 Illinois counties. See the [Region Codes](#) section for more details.
- County Code:** A code of three numbers, from 001 to 102, assigned to each of the 102 Illinois counties in alphabetical order. See the [County Codes](#) section for more details.
- District Code:** A code of four numbers, or three numbers and one letter, that includes the legal identifier that the school district uses as its district name.

District Code	
0000	The program is operated by an ROE.
8XXX	The cooperative has legal entity status.
Public School District Code	The cooperative is operated by that district and uses its district code.

- Type Code:** A code of two numbers that identifies the administrative agent.

Type Code & Administrative Agents	
60	Designates a governing board composed of one member of the school board of each cooperative district and designates such board to act in accordance with the joint agreement.
61-63	Designates an administrative district to act as fiscal and legal agent for the districts that are parties to a special education agreement. The district code is the same as a public district but the type code is unique.

5. **School Code:** A code of four numbers. The first two digits of the school code are duplicated from the special education cooperative district type code and appear in the school position of the district record as seen in the table below. Please note that because there are no Category 6 entities with a Type code of “59,” it has been excluded from the Type/School Code table below.

Type Code	School Code
60	6000
61	6100
62	6200
63	6300

## Category 7 (Public: Special Education Co-Op Schools)

The first 11 numbers (or 10 numbers and one letter) of the RCDTS code identify the Category 6 parent of the school. The last four numbers (school code) identify the particular school in the school district.

Example RCDTS code of a public special education co-op school:

(1)	(2)	(3)	(4)	(5)	
07	016	1420	61	6101	Braun Educational Center
1-2	3-5	6-9	10-11	12-15	<b>Data Format Positions</b>
.	.	.	.	.	School = Braun Educational Center (6101)
.	.	.	.	.	Type = Special Education Cooperative (61)
.	.	.	.	.	District = Southwest Cook Coop Spec Ed (1420)
.	.	.	.	.	County = Cook (016)
.	.	.	.	.	Region = South Cook (07)

1. **Region Code:** A code of two numbers, from 01-56, for the 38 ROEs. Each region is made up of one or more of the 102 Illinois counties. See the [Region Codes](#) section for more details.
2. **County Code:** A code of three numbers, from 001 to 102, assigned to each of the 102 Illinois counties in alphabetical order. See the [County Codes](#) section for more details.
3. **District Code:** A code of four numbers, or three numbers and one letter, that includes the legal identifier that the school district uses as its district name.
4. **Type Code:** A code of two numbers that identifies the type of administrative agent.

Administrative Agents	
60-63	Special Education Cooperative

5. **School Code:** A code of four numbers assigned to the specific school.
  - a. The first two digits of the school code are duplicated from the special education cooperative district type code "60," "61," "62," or "63."
  - b. The remaining and last two digits are sequential.

## Category 8 (Public: Other State-Funded Entities & Hybrid High School Districts/Schools)

Category 8 contain only records that are funded through multiple government institutions. Category 8 contains both district and school entities. If the last four digits of the RCDTS code are “0000,” then that indicates that the entity is the district. The school that belongs to that district will have a school code (the last four digits) that is NOT “0000.”

Example RCDTS code for a publicly funded and hybrid co-op high school district:

(1)	(2)	(3)	(4)	(5)	
65	108	9010	80	0000	ISU Laboratory Schools
1-2	3-5	6-9	10-11	12-15	<b>Data Format Positions</b>
					School = District-level Entity (0000)
					Type = State Funded (80)
					District = ISU Laboratory Schools (9010)
					County = State Funded (108)
					Region = State Funded (65)

Example RCDTS code for a publicly funded and hybrid co-op high school:

(1)	(2)	(3)	(4)	(5)	
65	108	9010	80	0001	University High School
1-2	3-5	6-9	10-11	12-15	<b>Data Format Positions</b>
					School = University High School (0001)
					Type = State Funded (80)
					District = ISU Laboratory Schools (9010)
					County = State Funded (108)
					Region = State Funded (65)

1. **Region Code:** A code of two numbers; Region 65 is assigned to most Category 8 entities. See the [Region Codes](#) section for more details.
2. **County Code:** A code of three numbers; number “108” is assigned to most Category 8 entities. See the [County Codes](#) section for more details.
3. **District Code:** A code of four numbers that usually begins with a “9” or “8.”
4. **Type Code:** A code of two numbers that identifies the type of administrative agent.

Administrative Agents	
80	Other State-Funded Schools

5. **School Code:** A code of four numbers assigned to the school. The first digit indicates the kind of school (e.g., high school, middle school, elementary school). The remaining three digits are sequential. Please note that a code of “0000” is used in the school code for the district record.

School Code	
0	High School
1	Middle/Junior High School
2	Elementary School
3	Special School

## Category 9 (Public: Area Vocational Districts and Schools)

Category 9 entities offer Career and Technical Education (CTE). Category 9 contains both district and school records. The first 11 numbers (or 10 numbers and one letter) of the RCDTS code identify the school district. The last four numbers identify the particular school in the school district.

Example RCDTS code for a CTE area vocational district and school:

(1)	(2)	(3)	(4)	(5)	
51	084	7900	40	4000	Capital Area Vocational Center in Springfield
1-2	3-5	6-9	10-11	12-15	<b>Data Format Positions</b>
					School = Capital Area Vocational Center (4000)
					Type = Area Vocational Center (40)
					District = Capital Area Vocational Center (7900)
					County = Sangamon (084)
					Region = Sangamon (51)

1. **Region Code:** A code of two numbers, from 01-56, for the 38 ROEs. Each region is made up of one or more of the 102 Illinois counties. See the [Region Codes](#) section for more details.
2. **County Code:** A code of three numbers, from 001 to 102, assigned to each of the 102 Illinois counties in alphabetical order. See the [County Codes](#) section for more details.
3. **District Code:** A code of four numbers that includes the legal identifier that the entity uses as its district name. If four zeroes appear as the district code, the program is operated by an EFE system or an Area Career Center.
4. **Type Code:** A code of two numbers that identifies the type of administrative agent.

Administrative Agents	
40	Area Career Center or state-designated facility that is jointly owned and operated by member districts.
41	Area Career Center that is operated by one district but accepts students from multiple districts.

Education for Employment	
45	EFE is legal entity.
46	EFE has fiscal agent. (The first nine characters of their RCDTS code is same as the fiscal agent's code.)
47	EFE has fiscal agent; fiscal agent has more than one EFE. (The first has type code 46, next has type code 47.)

5. **School Code:** A code of four numbers assigned to the school. The first two digits indicate the type of administrative agent, which is duplicated from the type code. The remaining two digits are sequential.
  - If the Area Career Center is a type 40, 40XX appears in the school category of the district record.
  - If the Area Career Center is a type 41, 41XX appears in the school category of the district record.
  - If the EFE regional program is a type 45, 46, or 47, then 45XX, 46XX, or 47XX will appear in the school category.

School Code	
40	Area Career Center: Type 40 center that is a state-designated facility that is jointly owned and operated by member districts. Can be own fiscal agent.
41	Area Career Center: Type 41 center is a state-designated facility that is owned by one district and jointly operated by member districts (e.g., LIFT, SCI).
45	School of Type 45
46	School of Type 46
47	School of Type 47

## Category A (Public: Regional Programs)

Category A contains records that are managed by an ISC/ROE. Category A contains school records only. All Alternative Learning Opportunities Programs,, Truants' Alternative and Optional Education Programs, and Regional Safe School Programs are included in Category A.

The parent entity of regional programs is an ISC/ROE, so the first 11 digits of the RCDTS code will be the same as the ISC/ROE. The last four numbers identify the type of regional program and particular site.

Example RCDTS code for a regional program:

(1)	(2)	(3)	(4)	(5)	
13	000	0000	00	9202	Centralia Alternative School
1-2	3-5	6-9	10-11	12-15	<b>Data Format Positions</b>
					School = Centralia Alternative School (9202)
					Type = Always two zeros (00)
					District = Always four zeros (0000)
					County = Always three zeros (000)
					Region = Clinton/Jefferson/Marion/Washington (13)

1. **Region Code:** A code of two numbers, from 01-56, for the 38 ISC/ROEs. Each region is made up of one or more of the 102 Illinois counties. See [Region Codes](#) for more details.
2. **County Code:** Regional programs are assigned a county code of "000."
3. **District Code:** Regional programs are assigned a district code of "0000."
4. **Type Code:** Regional programs are assigned a type code of "00."
5. **School Code:** A code of four numbers assigned to the school. The first two digits indicate the type of regional program. The remaining two digits are sequential. All school codes for regional programs will begin with "9."

School Code	
9000	ROE district record in the school position
9101-9199	School not assigned to another category
9201-9299	Alternative program operated by ROE
9301-9399	Safe school program operated by ROE
9401-9499*	Prekindergarten school program
9501-9599	Alternative Learning Opportunities Program Attendance Center

### NOTE:

\*Only one entity uses this code. All other (and future) early childhood programs should go under Category E.

## Category B (State Charter Schools & Payee File for Charter Schools)

Category B contains both district and school records for state charter schools. It also contains records of the State Charter Payee File, which includes all state charter schools that receive certain payments directly. The first 11 numbers, or 10 numbers and one letter, of the RCDTS code identify the school district. The last four numbers identify the particular school in the school district. Two examples are provided. The first example is for a state charter school. The second example is for a payee file for the charter schools in which the charter was issued by the local district.

### State Charter School RCDTS Code

Example RCDTS code for a state charter school:

(1)	(2)	(3)	(4)	(5)	
15	016	9000	90	9000	Horizon Science Academy-McKinley Park
1-2	3-5	6-9	10-11	12-15	<b>Data Format Positions</b>
					School = Horizon Science Academy-McKinley Park (9000)
					Type = State Charter Program (90)
					District = Horizon Science Academy-McKinley Park (9000)
					County = Cook (016)
					Region = Cook (15)

1. **Region Code:** A code of two numbers, from 01-56, for the 38 ROEs. Each region is made up of one or more of the 102 Illinois counties. See the [Region Codes](#) section for more details.
2. **County Code:** A code of three numbers, from 001 to 102, assigned to each of the 102 Illinois counties in alphabetic order. See the [County Codes](#) section for more details.
3. **District Code:** A code of four numbers; state charter schools are assigned a code of 9000.
4. **Type Code:** A code of two numbers that identifies the type of administrative agent.

Type Code	
90	State Charter School

5. **School Code:** A code of four numbers assigned to the school.

School Code	
0XXX	High School
1XXX	Middle/Junior High School
2XXX	Elementary School
3XXX	Special School



## Payee File RCDTS Code

Example RCDTS code:

(1)	(2)	(3)	(4)	(5)	
15	016	2990	AB	AB00	KIPP Create Charter School
1-2	3-5	6-9	17-18	10-13	<b>Data Format Positions</b>
					School = KIPP Create Charter School (AB00)
					Type = Charter Program (AB)
					District = City of Chicago School District 299 (2990)
					County = Cook (016)
					Region = Cook (15)

1. **Region Code:** A code of two numbers, from 01-56, for the 38 ROEs. Each region is made up of one or more of the 102 Illinois counties. See the [Region Codes](#) section for more details.
2. **County Code:** A code of three numbers, from 001 to 102, assigned to each of the 102 Illinois counties in alphabetic order. See the [County Codes](#) section for more details.
3. **District Code:** A code of four numbers, or three numbers and one letter, that includes the legal identifier that the school district uses as its district name. If the fourth digit is a 5, the 5 represents one half.
4. **Type Code:** A code of two letters. The first letter is A, indicating a charter school. The second letter is sequential (AA for the first charter school in the district, AB for the second, etc.).
5. **School Code:** A code of two letters and two numbers assigned to the school. The two letters are a repeat of the type code. The two numbers are sequential and are used when one charter school operated more than one site (AA00 for the district site, AA01 for the first site, AA02 for the second site, etc.).

## Category C (Nonpublic Special Education Operating Agencies)

Category C contains records for nonpublic special education operating agencies. The first 11 numbers, or 10 numbers and one letter, of the RCDTS code identify the operating agency.

### Regional Programs

Example RCDTS code for a nonpublic special education operating agency:

(1)	(2)	(3)	(4)	(5)	
51	084	0107	00	0000	Hope Institute
1-2	3-5	6-9	10-11	12-15	<b>Data Format Positions</b>
					School = School Code (0000)
					Type = Special Education Private Facility (00)
					District = The Hope Institute (0107)
					County = Sangamon (084)
					Region = Menard/Sangamon (51)

1. **Region Code:** A code of two numbers, from 01-56, for the 38 ROEs. Each region is made up of one or more of the 102 Illinois counties. See the [Region Codes](#) section for more details.
2. **County Code:** A code of three numbers, from 001 to 102, assigned to each of the 102 Illinois counties in alphabetic order. See the [County Codes](#) section for more details.
3. **District Code:** A code of four numbers, or three numbers and one letter, that includes the legal identifier that the school district uses as its district name. If the fourth digit is 5, the 5 represents one half.
4. **Type Code:** A code of two numbers that identifies the type of administrative agent.

Administrative Agents	
00	Special Education Private Facility

5. **School Code:** A code of four numbers assigned to the operating agencies. The school code for all Category C entities is "0000" because it is a district-level entity.

## Category D (Nonpublic Special Education Programs)

Category D contains program facility records for nonpublic special education programs. The first 11 numbers, or 10 numbers and one letter, of the RCDTS code identify the school district. The last four numbers identify the particular school in the school district.

### Out-of-State Facilities

An example of an out-of-state nonpublic special education program:

(1)	(2)	(3)	(4)	(5)	
77	777	0010	00	0805	Kings Daughters School
1-2	3-5	6-9	10-11	12-15	<b>Data Format Positions</b>
					School = School Code (0805)
					Type = Special Education Private Facility (00)
					District = King's Daughters School (0010)
					County = Out-of-State (777)
					Region = Out-of-State (77)

1. **Region Code:** A code of two numbers; out-of-state facilities are assigned a region code of "77."
2. **County Code:** A code of three numbers; out-of-state facilities are assigned a county code of "777."
3. **District Code:** A code of four numbers; the district codes for out-of-state facilities are assigned sequentially.
4. **Type Code:** A code of two numbers that identifies the type of administrative agent.

Administrative Agents	
00	Special Education Private Facility

5. **School Code:** A code of four numbers assigned to the school.

## Category E (Early Childhood Attendance Sites)

Category E records are unique to nonpublic school districts, community-based organizations, faith-based organizations and child care entities that have Early Childhood Block Grant programs and are required per grant assurances to enroll children in the Student Information System (SIS). This code is an additional code assigned by the Category E gatekeeper. It does not affect an entity's RCDT code; it merely identifies attendance centers. The analogy would be a district code to school building code or parent to child. These codes change the school code of nonpublic school district entities to something other than the "0000," which is in their original RCDT code. The reason for this is that SIS will not accept a school code of "0000." These codes are not used for anything other than to allow the entities to enroll their children in SIS. It allows them to have a home school and a serving school code. (Note: At times, even public school districts or ROEs may be assigned to Category E if they have early childhood attendance sites that are not public school buildings.) The gatekeepers create, edit, and delete the Category E records in the Entity Profile System.

Category E records are extremely important because the code allows programs to enter student enrollment, which is reported annually. Additionally, program monitoring for compliance and quality link the RCDTS code/child level account.

Example RCDTS code for an early childhood attendance site:

(1)	(2)	(3)	(4)	(5)	
09	010	043P	00	3101	is the RCDTS code for Champaign Head Start
1-2	3-5	6-9	10-11	12-15	<b>Data Format Positions</b>
					School = School Code (3101)
					Type = Parent District's Type (00)
					District = Parent District's District (043P)
					County = Parent District's County (Champaign (010))
					Region = Parent District's Region (Champaign/Ford ROE (09))

1. **Region Code:** In Category E, all category rules are combined and applied to the child record from the parent.
2. **County Code:** In Category E, all category rules are combined and applied to the child record from the parent.
3. **District Code:** In Category E, all category rules are combined and applied to the child record from the parent.
4. **Type Code:** In Category E, all category rules are combined and applied to this child account from the parent accounts in Categories 1-9.
5. **School Code:** A code of four numbers assigned to the school. This coding excludes Chicago.
  - a. Note: Chicago uses numeric sequencing and provides information. It is then assigned an RCDTS code.

School Code	
3000-3100-3300	Preschool for All (ages 3-5) and/or Prevention Initiative (birth to age 3)
3200	Home-Based Pre-K

## Category G (Miscellaneous Non-Payees)

Category G records are for entities that need IWAS access but are not miscellaneous payees. These entities do not receive funding from ISBE. Some of these organizations offer professional development to educators. The professional development received through these entities may be used as credit to maintain licensure.

Example RCDTS Code for a miscellaneous non-payee:

(1)	(2)	(3)	(4)	(5)	
15	016	0041	P1	0000	Chicago Architecture Foundation
1-2	3-5	6-9	10-11	12-15	<b>Data Format Positions</b>
					School = Site Code (0000)
					Type = Approved by Application (P1)
					District = Chicago Architecture Foundation (0041)
					County = Cook County (016)
					Region = City of Chicago (15)

- Region Code:** A code of two numbers, from 01-56, for the 38 ROEs. Each region is made up of one or more of the 102 Illinois counties. It is determined by the geographic location of the entity's headquarters. See the [Region Codes](#) section for more details.
- County Code:** A code of three numbers, from 001 to 102, assigned to each of the 102 Illinois counties in alphabetical order. It is determined by the geographic location of the entity's headquarters. See the [County Codes](#) section for more details.
- District Code:** Each entity is assigned a district code by the Educator Effectiveness Department.
- Type Code:** A code indicates what type of entity is offering the professional development courses.

Type Code	
P1	Approved by Application -- Entities approved by the Educator Effectiveness Department to become approved PD providers per <a href="#">105 ILCS 5/21B-45 (g)</a> .
P7	State Agencies, Boards, and Commissions - Entities that are statutorily approved PD providers per <a href="#">105 ILCS 5/21B-45 (g)(7)</a> .
P8	Museums, as defined in Section 10 of the Museum Disposition of Property Act, that are statutorily approved PD providers per <a href="#">105 ILCS 5/21B-45 (g)(8)</a> .
P9	Miscellaneous - Professional organizations that have met all requirements to be a PD provider per <a href="#">105 ILCS 5/21B-45</a> , but do not fit into any of the listed categories.

- School Code:** A code of four numbers assigned to the headquarters site.

School Code	
0000	Main site and headquarters of entity
0001	Secondary site of entity

## Region and County Codes

Note that Cook County is divided into four regions:

1. City of Chicago (Region 15)
2. North Cook ISC 1 (Region 05)
3. West Cook ISC 2 (Region 06)
4. South Cook ISC 4 (Region 07)

Region and county codes that are now defunct are marked with a ~~strike through~~. No new RCDTS codes may be created using the defunct region or county codes. There are no active RCDTS codes that use the defunct region and county codes. All RCDTS codes that were under the defunct region and county codes are closed and inactive.

There were a series of mergers for ROEs and ISCs resulting in some region codes becoming defunct; this is why the ROE numbers are not sequential. For example, all entities that were in Alexander County that were in the now-defunct ROE 2 are currently in ROE 30 Alxndr/Jcksn/Pulsk/Prry/Union.

See [Region and County Relations](#) section for more information about which counties belong to which ROE's.

## Regions

Some region names are abbreviated because EPS has a character limit for entity names. See [EPS Guidelines](#) for more information about entity names. Which counties belong to which ISC/ROE are in the [Region and County Relations](#) table.

Region Code	Region Name
00	No Region Affiliation
01	Adam/Brwn/Cass/Morgn/Pik/Sctt ROE
02	<del>Alxndr/John/Masc/Pulski/Unon</del> ROE
03	Bnd/Chrstn/Effngh/Fytt/Mntgmr ROE
04	Boone/Winnebago ROE
05	Region 05 North Cook ISC 1
06	Region 06 West Cook ISC 2
07	Region 07 South Cook ISC 4
08	Carroll/Jo Daviess/Stephenson ROE
09	Champaign/Ford ROE
10	<del>Christian/Montgomery</del> ROE
11	Clk/Cl/Cmbn/Dglas/Edgr/MLtr/Shlb
12	Clay/Cwford/Jsper/Lwrnce/Rhland
13	Clintn/Jeffrsn/Marin/Washngtn ROE
14	<del>Cook</del> ROE
15	City of Chicago
16	De Kalb ROE
17	DeWitt/Livingstn/Logan/McLean ROE
18	<del>Douglas-Piatt Educ Serv</del> Region
19	DuPage ROE
20	Edw/Glt/Hlt/Hdn/Pop/Sln/Wbh/Wn/Wh
21	Frankln/Johnsn/Massc/Willimsn ROE
22	<del>Fulton/Schuyler</del> ROE
23	<del>Gallatin-Hardin-Pope-Saline-Esr</del>
24	Grundy/Kendall ROE
25	<del>Hamilton/Jefferson</del> ROE
26	Hancck/Fultn/Schuylr/McDonogh ROE
27	<del>Henderson/Mercer/Warren</del> ROE
28	Bureau/Henry/Stark ROE
29	<del>Iroquois Educational Service Reg</del>
30	Alxndr/Jcksn/Pulsk/Prry/Union ROE
31	Kane ROE
32	Iroquois/Kankakee ROE
33	Henderson/Knox/Mercer/Warren ROE

34	Lake ROE
35	La Salle/Marshall/Putnam ROE
36	<del>Lee Educational Service Region</del>
37	<del>Livingston Educ Service Region</del>
38	<del>Logan/Mason/Menard</del> ROE
39	Macon/Piatt ROE
40	Calhoun/Greene/Jersy/Macoupin ROE
41	Madison ROE
42	<del>Marion Educ Service Region</del>
43	<del>Marshall/Putnam/Woodford</del> ROE
44	McHenry ROE
45	Monroe/Randolph ROE
46	<del>Brown/Cass/Morgan/Scott</del> ROE
47	Lee/Ogle/Whiteside ROE
48	Peoria ROE
49	Rock Island ROE
50	St Clair ROE
51	Menard/Sangamon ROE
52	<del>Stephenson Educ Service Region</del>
53	Mason/Tazewell/Woodford ROE
54	Vermilion ROE
55	<del>Whiteside</del> ROE
56	Will ROE
57	<del>Williamson Educ Service Region</del>
58	REGION #58 IS NOT ACTIVE
59	REGION #59 IS NOT ACTIVE
60	Dept of Cor-Juvenile Justice Sys
61	<del>Children &amp; Family Services</del>
62	<del>MENTAL HEALTH- DEPT. OF</del>
63	<del>REHABILITATION SERVICES- DEPT. OF</del>
64	Public State Businesses
65	State of Illinois
77	Spec Ed Private Facilities

## County Codes

Counties are listed alphabetically with their corresponding county code.

County Code	County
000	ISC/ROE
001	Adams
002	Alexander
003	Bond
004	Boone
005	Brown
006	Bureau
007	Calhoun
008	Carroll
009	Cass
010	Champaign
011	Christian
012	Clark
013	Clay
014	Clinton
015	Coles
016	Cook
017	Crawford
018	Cumberland
019	DeKalb
020	DeWitt
021	Douglas
022	DuPage
023	Edgar
024	Edwards
025	Effingham
026	Fayette
027	Ford
028	Franklin
029	Fulton
030	Gallatin
031	Greene
032	Grundy
033	Hamilton
034	Hancock
035	Hardin

County Code	County
036	Henderson
037	Henry
038	Iroquois
039	Jackson
040	Jasper
041	Jefferson
042	Jersey
043	Jo Daviess
044	Johnson
045	Kane
046	Kankakee
047	Kendall
048	Knox
049	Lake
050	La Salle
051	Lawrence
052	Lee
053	Livingston
054	Logan
055	Macon
056	Macoupin
057	Madison
058	Marion
059	Marshall
060	Mason
061	Massac
062	McDonough
063	McHenry
064	McLean
065	Menard
066	Mercer
067	Monroe
068	Montgomery
069	Morgan
070	Moultrie
071	Ogle

County Code	County
072	Peoria
073	Perry
074	Piatt
075	Pike
076	Pope
077	Pulaski
078	Putnam
079	Randolph
080	Richland
081	Rock Island
082	Saint Clair
083	Saline
084	Sangamon
085	Schuyler
086	Scott
087	Shelby
088	Stark
089	Stephenson
090	Tazewell
091	Union
092	Vermilion
093	Wabash
094	Warren
095	Washington
096	Wayne
097	White
098	Whiteside
099	Will
100	Williamson
101	Winnebago
102	Woodford
105	Dept of Corrections
108	State of Illinois
777	Out of State



## Region and County Code Relations

Counties that are in the same region have the same color. The two colors used in this table are alternating bands of light blue and white.

Region Code	Region Name	County Code	County
01	Adam/Brwn/Cass/Morgn/Pik/Sctt ROE	001	Adams
01	Adam/Brwn/Cass/Morgn/Pik/Sctt ROE	005	Brown
01	Adam/Brwn/Cass/Morgn/Pik/Sctt ROE	009	Cass
01	Adam/Brwn/Cass/Morgn/Pik/Sctt ROE	069	Morgan
01	Adam/Brwn/Cass/Morgn/Pik/Sctt ROE	075	Pike
01	Adam/Brwn/Cass/Morgn/Pik/Sctt ROE	086	Scott
03	Bnd/Chrstn/Effngh/Fytt/Mntgmr ROE	003	Bond
03	Bnd/Chrstn/Effngh/Fytt/Mntgmr ROE	011	Christian
03	Bnd/Chrstn/Effngh/Fytt/Mntgmr ROE	025	Effingham
03	Bnd/Chrstn/Effngh/Fytt/Mntgmr ROE	026	Fayette
03	Bnd/Chrstn/Effngh/Fytt/Mntgmr ROE	068	Montgomery
04	Boone/Winnebago ROE	004	Boone
04	Boone/Winnebago ROE	101	Winnebago
05	Region 05 North Cook ISC 1	016	Cook
06	Region 06 West Cook ISC 2	016	Cook
07	Region 07 South Cook ISC 4	016	Cook
08	Carroll/Jo Daviess/Stephenson ROE	008	Carroll
08	Carroll/Jo Daviess/Stephenson ROE	043	Jo Daviess
08	Carroll/Jo Daviess/Stephenson ROE	089	Stephenson
09	Champaign/Ford ROE	010	Champaign
09	Champaign/Ford ROE	027	Ford
11	Clk/Cls/Cmbn/Dglas/Edgr/Mltr/Shlb	012	Clark
11	Clk/Cls/Cmbn/Dglas/Edgr/Mltr/Shlb	015	Coles
11	Clk/Cls/Cmbn/Dglas/Edgr/Mltr/Shlb	018	Cumberland
11	Clk/Cls/Cmbn/Dglas/Edgr/Mltr/Shlb	021	Douglas
11	Clk/Cls/Cmbn/Dglas/Edgr/Mltr/Shlb	023	Edgar
11	Clk/Cls/Cmbn/Dglas/Edgr/Mltr/Shlb	070	Moultrie
11	Clk/Cls/Cmbn/Dglas/Edgr/Mltr/Shlb	087	Shelby
12	Clay/Cwford/Jsper/Lwrnce/Rhland	013	Clay
12	Clay/Cwford/Jsper/Lwrnce/Rhland	017	Crawford
12	Clay/Cwford/Jsper/Lwrnce/Rhland	040	Jasper
12	Clay/Cwford/Jsper/Lwrnce/Rhland	051	Lawrence
12	Clay/Cwford/Jsper/Lwrnce/Rhland	080	Richland
13	Clintn/Jeffrsn/Marin/Washngtn ROE	014	Clinton
13	Clintn/Jeffrsn/Marin/Washngtn ROE	041	Jefferson
13	Clintn/Jeffrsn/Marin/Washngtn ROE	058	Marion
13	Clintn/Jeffrsn/Marin/Washngtn ROE	095	Washington
15	City of Chicago	016	Cook
16	De Kalb ROE	019	DeKalb
17	DeWitt/Livingstn/Logan/McLean ROE	020	DeWitt
17	DeWitt/Livingstn/Logan/McLean ROE	053	Livingston

17	DeWitt/Livingstn/Logan/McLean ROE	054	Logan
17	DeWitt/Livingstn/Logan/McLean ROE	064	McLean
19	DuPage ROE	022	DuPage
20	Edw/Glt/Hlt/Hdn/Pop/Sln/Wbh/Wn/Wh	024	Edwards
20	Edw/Glt/Hlt/Hdn/Pop/Sln/Wbh/Wn/Wh	030	Gallatin
20	Edw/Glt/Hlt/Hdn/Pop/Sln/Wbh/Wn/Wh	033	Hamilton
20	Edw/Glt/Hlt/Hdn/Pop/Sln/Wbh/Wn/Wh	035	Hardin
20	Edw/Glt/Hlt/Hdn/Pop/Sln/Wbh/Wn/Wh	076	Pope
20	Edw/Glt/Hlt/Hdn/Pop/Sln/Wbh/Wn/Wh	083	Saline
20	Edw/Glt/Hlt/Hdn/Pop/Sln/Wbh/Wn/Wh	093	Wabash
20	Edw/Glt/Hlt/Hdn/Pop/Sln/Wbh/Wn/Wh	096	Wayne
20	Edw/Glt/Hlt/Hdn/Pop/Sln/Wbh/Wn/Wh	097	White
21	Frankln/Johnsn/Massc/Willimsn ROE	028	Franklin
21	Frankln/Johnsn/Massc/Willimsn ROE	044	Johnson
21	Frankln/Johnsn/Massc/Willimsn ROE	061	Massac
21	Frankln/Johnsn/Massc/Willimsn ROE	100	Williamson
24	Grundy/Kendall ROE	032	Grundy
24	Grundy/Kendall ROE	047	Kendall
26	Hancck/Fultn/Schuylr/McDonogh ROE	029	Fulton
26	Hancck/Fultn/Schuylr/McDonogh ROE	034	Hancock
26	Hancck/Fultn/Schuylr/McDonogh ROE	062	McDonough
26	Hancck/Fultn/Schuylr/McDonogh ROE	085	Schuyler
28	Bureau/Henry/Stark ROE	006	Bureau
28	Bureau/Henry/Stark ROE	037	Henry
28	Bureau/Henry/Stark ROE	088	Stark
30	Alxndr/Jcksn/Pulsk/Prry/Union ROE	002	Alexander
30	Alxndr/Jcksn/Pulsk/Prry/Union ROE	039	Jackson
30	Alxndr/Jcksn/Pulsk/Prry/Union ROE	073	Perry
30	Alxndr/Jcksn/Pulsk/Prry/Union ROE	077	Pulaski
30	Alxndr/Jcksn/Pulsk/Prry/Union ROE	091	Union
31	Kane ROE	045	Kane
32	Iroquois/Kankakee ROE	038	Iroquois
32	Iroquois/Kankakee ROE	046	Kankakee
33	Henderson/Knox/Mercer/Warren ROE	036	Henderson
33	Henderson/Knox/Mercer/Warren ROE	048	Knox
33	Henderson/Knox/Mercer/Warren ROE	066	Mercer
33	Henderson/Knox/Mercer/Warren ROE	094	Warren
34	Lake ROE	049	Lake
35	La Salle/Marshall/Putnam ROE	050	La Salle
35	La Salle/Marshall/Putnam ROE	059	Marshall
35	La Salle/Marshall/Putnam ROE	078	Putnam
39	Macon/Piatt ROE	055	Macon
39	Macon/Piatt ROE	074	Piatt
40	Calhoun/Greene/Jersy/Macoupin ROE	007	Calhoun
40	Calhoun/Greene/Jersy/Macoupin ROE	031	Greene

40	Calhoun/Greene/Jersey/Macoupin ROE	042	Jersey
40	Calhoun/Greene/Jersey/Macoupin ROE	056	Macoupin
41	Madison ROE	057	Madison
44	McHenry ROE	063	McHenry
45	Monroe/Randolph ROE	067	Monroe
45	Monroe/Randolph ROE	079	Randolph
47	Lee/Ogle/Whiteside ROE	052	Lee
47	Lee/Ogle/Whiteside ROE	071	Ogle
47	Lee/Ogle/Whiteside ROE	098	Whiteside
48	Peoria ROE	072	Peoria
49	Rock Island ROE	081	Rock Island
50	St Clair ROE	082	Saint Clair
51	Menard/Sangamon ROE	065	Menard
51	Menard/Sangamon ROE	084	Sangamon
53	Mason/Tazewell/Woodford ROE	060	Mason
53	Mason/Tazewell/Woodford ROE	090	Tazewell
53	Mason/Tazewell/Woodford ROE	102	Woodford
54	Vermilion ROE	092	Vermilion
56	Will ROE	099	Will
60	Dept of Cor-Juvenile Justice Sys	105	Dept of Corrections
64	Public State Businesses	108	State of Illinois
65	State of Illinois	108	State of Illinois
77	Spec Ed Private Facilities	777	