



My Data Dashboard

December 4, 2025

Background



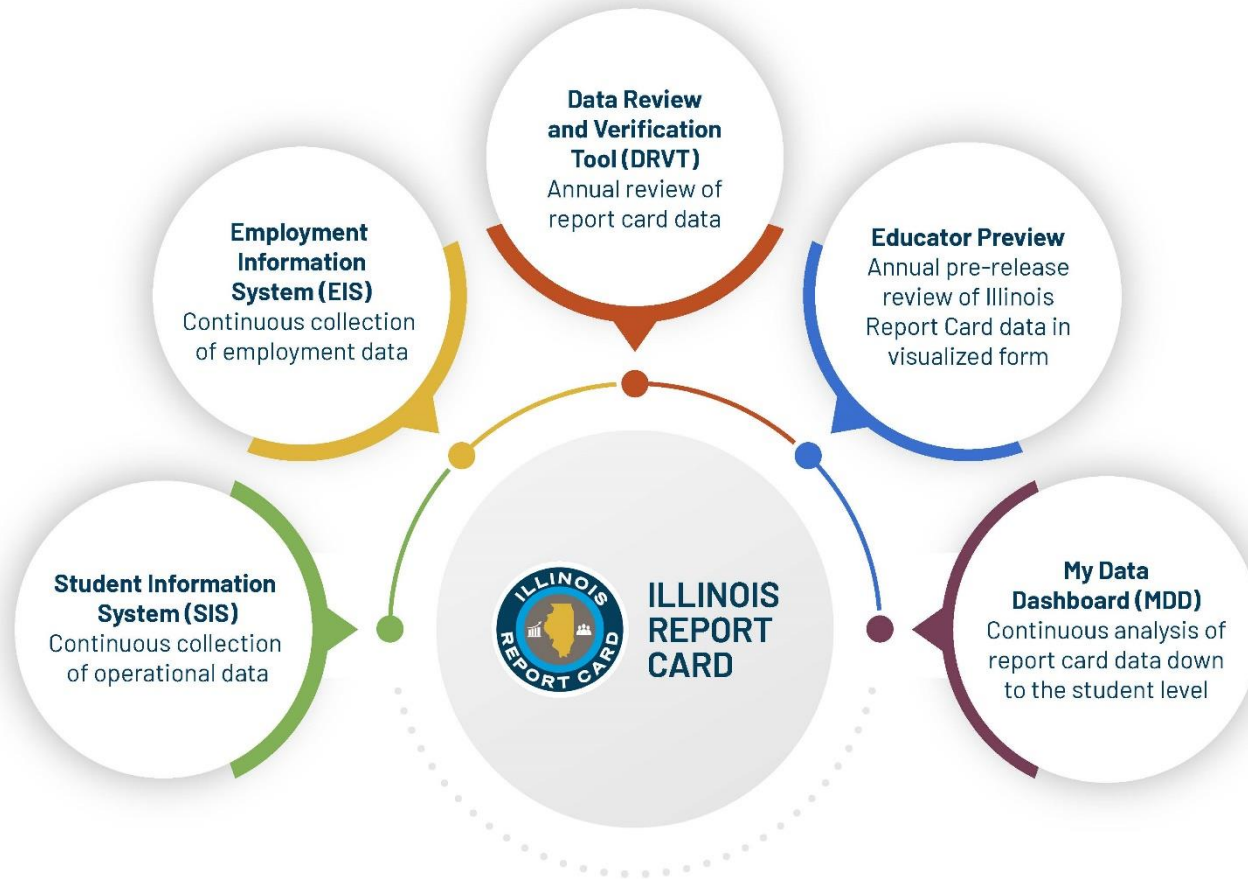
Previously Released Metrics

- 8th Grade Passing Algebra
- Chronic Absenteeism
- Graduation Rate
- IAR
- DLM
- SAT
- ACCESS
- ISA
- 9th Grade on Track
- Chronic Truancy
- Summative Designation
- KIDS

Including Updated Visualizations

- Business rule walk-throughs
- Data by report card year or grade tested (if applicable)
- Cohort-driven analysis (providing a more accurate reflection of performance and growth over time than annual snapshot data)
- Detailed and filterable student rosters
- View data from previous years

The Illinois Report Card Suite





November 2025 Enhancements

- Realignment of release schedule to better support alignment with Illinois Report Card releases
 - MDD will now update annually in May/June and Nov/Dec
- Site navigation redesigned
 - Major headings now almost precisely mirror the Report Card
 - Academic Progress now subject-based
 - Instrument-specific screens are now embedded as options within the subject-based reporting screens
 - Historical Academic Progress section added
- New ACT screens
- SAT Screens move to Historical Academic Progress

A Note About Historical Rosters

Filters

CURRENT

First Name	Last Name	SIS ID	Gender	Race/Ethnicity	IEP	LI	EL	Homeless	With Disabilities
------------	-----------	--------	--------	----------------	-----	----	----	----------	-------------------

▼

SHOW/HIDE COLUMNSEXPORT ▼

REPORT CARD

First Name	Last Name	Gender	Race/Ethnicity	IEP	LI	EL	Homeless	With Disabilities	District	School
------------	-----------	--------	----------------	-----	----	----	----------	-------------------	----------	--------

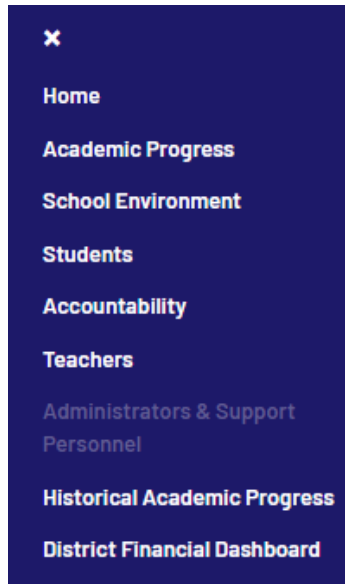
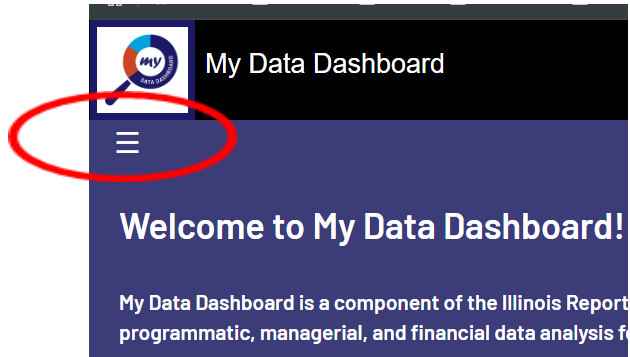
Displayed rosters will always have 2 sets of identity and demographic data columns. “Current” columns are populated with information from the CURRENT academic year. This may result in you seeing N/A for various students if they are no longer enrolled in your school or district. “Report Card” columns represent the values for the same students as recorded for the selected historical reporting year.

Reminder: EIS Positions and ED360 Roles

111	Director Area Voc Cent or Supervisor or More 1 field in CTE	District Administrator	
		School Administrator	
		Teacher	
		General Access	Default
114	Chief School Business Official	General Access	Default
		Teacher	
		School Administrator	
		District Administrator	
119	School Administrator	District Financial User	
		District Administrator	
		School Administrator	Default
		General Access	
120	Supervisor of One Field in Career and Technical Education	Teacher	
		General Access	Default
		District Administrator	
		School Administrator	

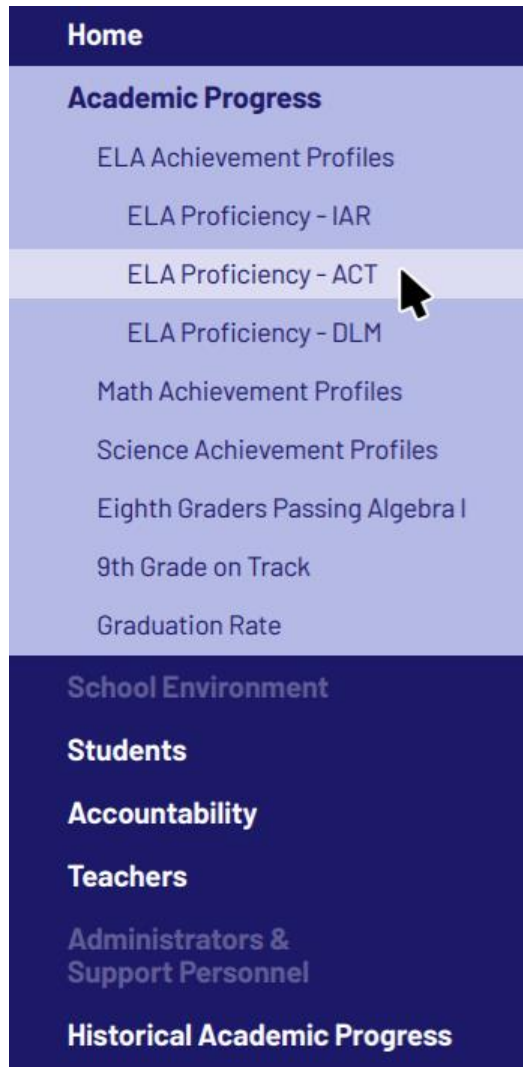
A cross-reference for EIS position codes, the default ED360 role assigned to each and the other roles available is now included in the ED360 User Guide and the How to Access My Data Dashboard guide, both of which are available at <https://www.isbe.net/mydashboard>

Menu Reorganization



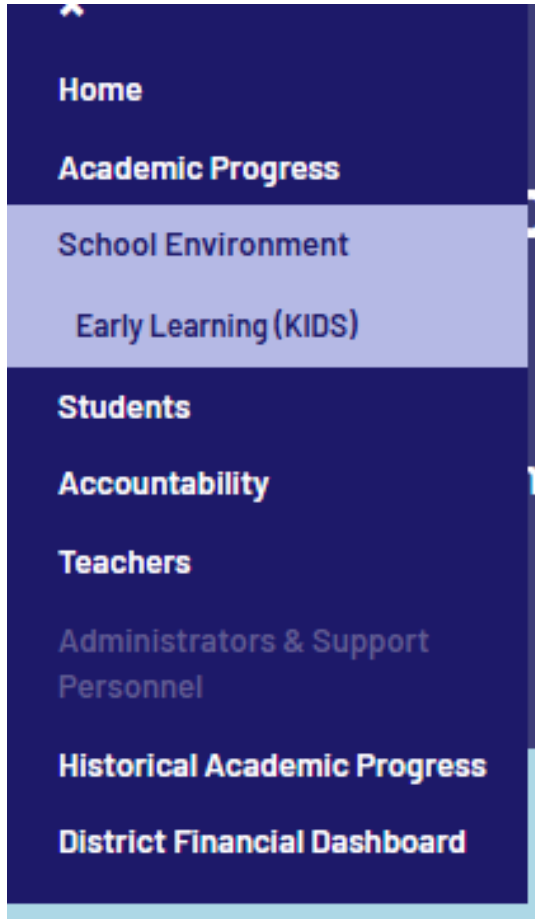
- The menu is still accessed using the “hamburger” option introduced in July.
- Top page banner stays in view on page, and new menu expands from “hamburger” to reveal options.

Academic Progress Menu



- Includes ELA, Math, and Science Achievement Profiles (which for now only include Proficiency)
- Eighth Graders Passing Algebra I
- 9th Grade on Track
- Graduation Rate

School Environment Menu



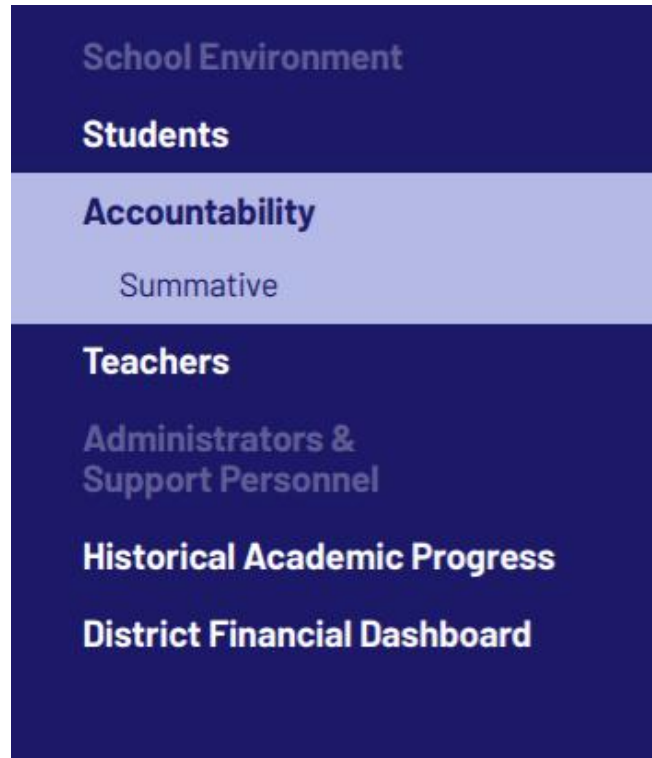
- Early Learning (KIDS)

Students Menu



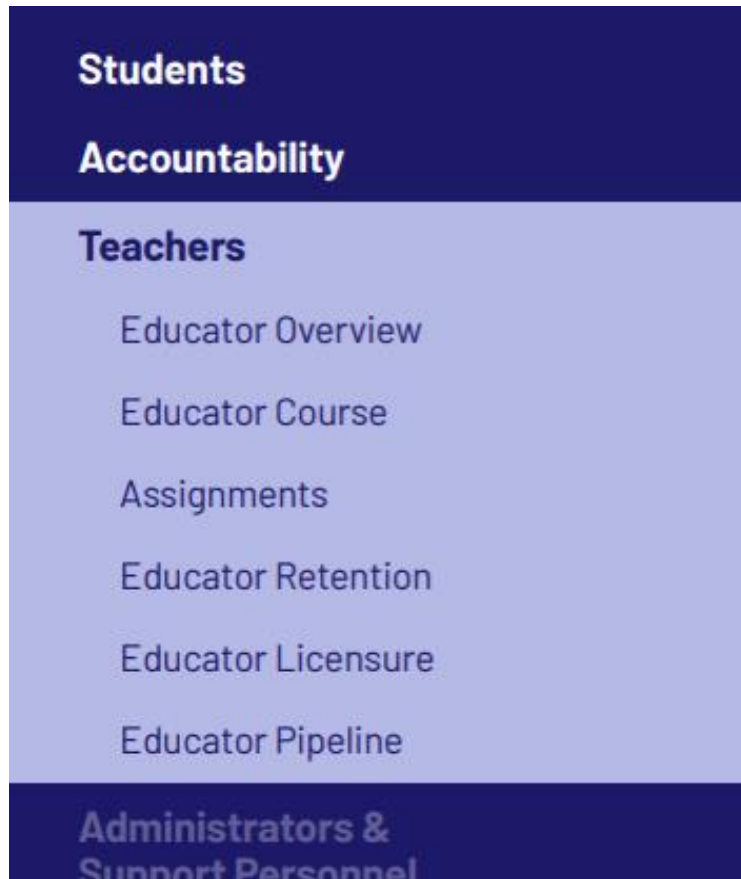
- ACCESS
- Chronic Absenteeism
- Dropout Rate
- Chronic Truancy Rate

Accountability Menu



- Summative

Teachers Menu



- Educators Overview
- Educator Course Assignments
- Educator Retention
- Educator Licensure
- Educator Pipeline

*these are all legacy screens that will eventually be upgraded/replaced when bandwidth allows. Portions may not be fully functional.

Administrators & Support Personnel Menu

- There are currently no pages displayed in this section of the MDD site, but the inactive menu option will continue to be displayed for continuity with the IRC site and as a placeholder for future development.

Historical Academic Progress Menu



- ELA, Math, and Science Achievement Profiles populated with Proficiency reporting for SAT as a retired test.

District Financial Dashboard

Teachers

Administrators & Support
Personnel

Historical Academic Progress

District Financial Dashboard

Annual Financial Report

Budgeting

Evidence-Based Funding

Grant Management

Program Reimbursements

- Annual Financial Report
- Budgeting
- Evidence-Based Funding
- Grant Management
- Program Reimbursements

ACT Results



- Appears under ELA, Math, and Science Achievement Profiles in the Proficiency screens
- Unlike the IRC, assessments still have their own reporting screens and are not all embedded within a single proficiency reporting screen.

Explanation Page

ELA Proficiency - ACT Suite

The Explanation below outlines the steps followed in calculating the values reported for you on the Illinois Report Card for this metric. The values displayed are the actual values derived from the local data submitted to ISBE data collection systems. The business rules for this metric and user guide for this application are available below. Click "View Data" at any point to jump directly to screens displaying your complete local data set.

Explanation

[Step 1](#) Step 2 Step 3 Step 4

- Illinois uses the ACT suite of assessments (The ACT, PreACT Secure, and PreACT 9 Secure) as the designated assessment for high school accountability. Performance levels that determine English Language Arts (ELA) proficiency are attributed to only the ELA section scores.
- ACT Proficiency has four Performance Levels:
 - Level 4: Above Proficient
 - Level 3: Proficient
 - Level 2: Approaching Proficient
 - Level 1: Below Proficient

TECHNICAL DOCUMENTS



[VIEW DATA](#)

Explanations are provided for ACT proficiency screens as they were/are for SAT as the previous High School assessment.

Other Displayed Data/Roster Data

ELA - ACT Suite						
Included in Participation Numerator	Included in Participation Denominator	Overall ELA Scale Score	ELA Percentile Rank	English Score	Reading Score	Writing Score

- Snapshot and trend displays are presented in similar fashion to the previous SAT reporting. Roster columns reflect detail data reported by the assessment vendor relative to ACT.



Resources

My Data Dashboard Webpage

- [MDD User Guide](#)
- How to Access My Data Dashboard
- [My Data Dashboard Highlights](#)
- Accessing Expiring Licensure Details within My Data Dashboard



Questions?



Thank you