



# My Data Dashboard

August 21, 2025



# Background

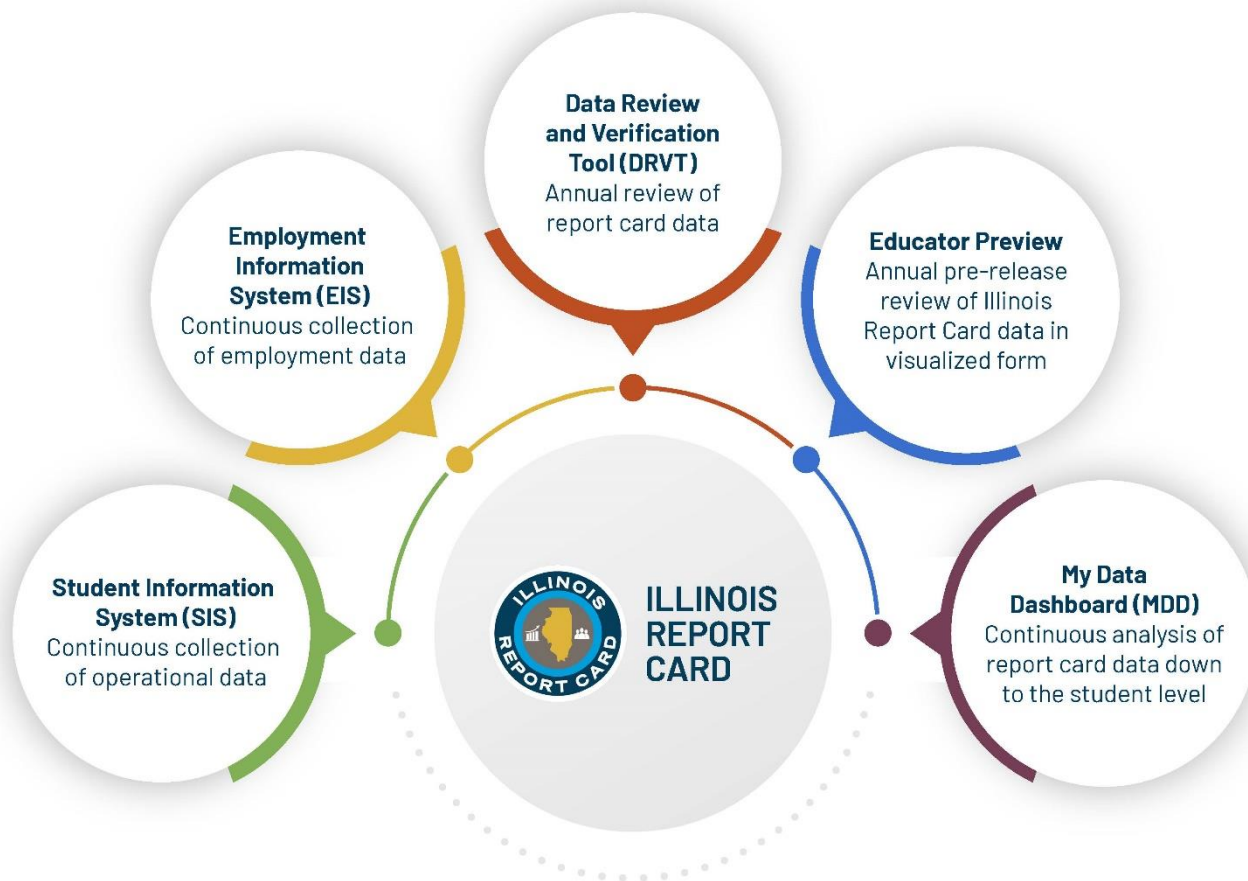
## Previously Released Metrics

- 8<sup>th</sup> Grade Passing Algebra
- Chronic Absenteeism
- Graduation Rate
- IAR
- DLM
- SAT
- ACCESS
- ISA
- 9<sup>th</sup> Grade on Track
- Chronic Truancy
- Summative Designation
- KIDS

## Including Updated Visualizations

- Business rule walk-throughs
- Data by report card year or grade tested (if applicable)
- Cohort-driven analysis (providing a more accurate reflection of performance and growth over time than annual snapshot data)
- Detailed and filterable student rosters
- View data from previous years

# The Illinois Report Card Suite

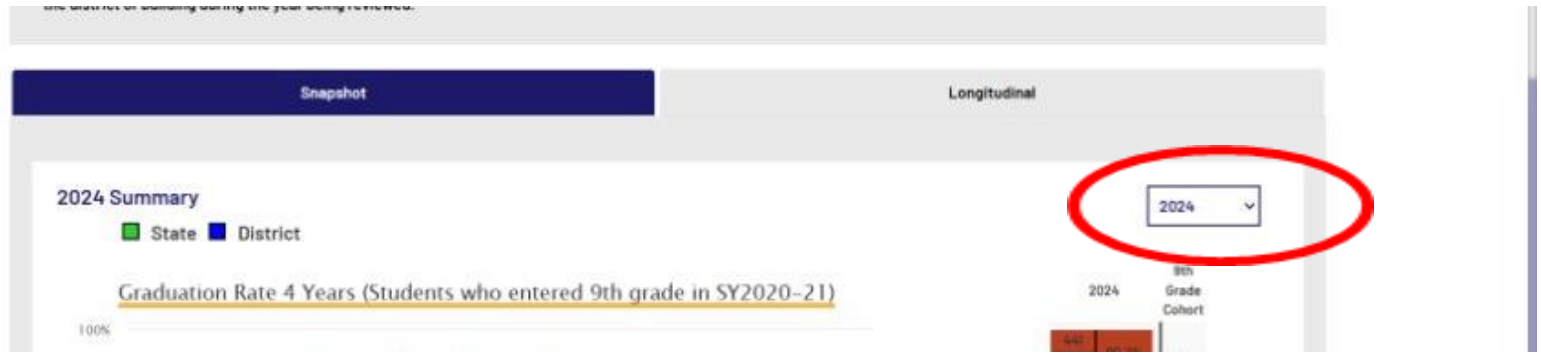




# July 2025 Enhancements

- Resolution of some technical issues from the January Release
  - Access to historical rosters
  - Availability of District Financial User role in EIS
- New Home Page
- New Navigation Menu
- Dropout Rate
- Graduation Rate

# Resolution of Technical Issues



- Historical data (including at the roster level) are now available for all metrics published in MDD. Access historical data by using the pull-down menu on any metric screen to change the report card data year for the data you would like to view.

# A Note About Historical Rosters

CURRENT

First Name	Last Name	SIS ID	Gender	Race/Ethnicity	IEP	LI	EL	Homeless	With Disabilities
------------	-----------	--------	--------	----------------	-----	----	----	----------	-------------------

▼

REPORT CARD

First Name	Last Name	Gender	Race/Ethnicity	IEP	LI	EL	Homeless	With Disabilities	District	School
------------	-----------	--------	----------------	-----	----	----	----------	-------------------	----------	--------

Displayed rosters will always have 2 sets of identity and demographic data columns. “Current” columns are always reflective of the current enrollment year in SIS but will read N/A for any students who have exited the school and do not have active current enrollment. “Report Card” columns represent the values for the same students as recorded for the selected historical year.

# District Financial User Role

- The District Financial User role is now available for assignment in EIS and will provide users access only to the district-level financial tools available in MDD.
- Available roles are context-specific to certain position codes in EIS. This role is not available for assignment to all EIS position codes.
- For example,
- District Financial User is a role that can only be assigned to people with position codes
  - 107 (General Admin)
  - 114 (CSBO)
  - 902 (ED360 User)

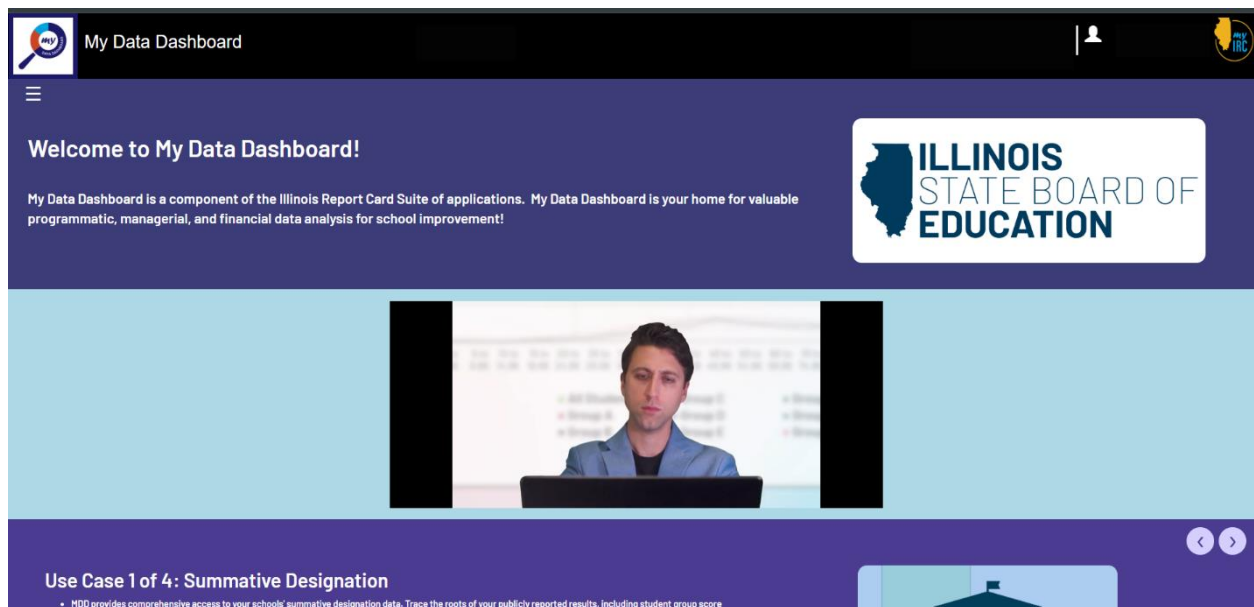
# EIS Positions and ED360 Roles

111	Director Area Voc Cent or Supervisor or More 1 field in CTE	District Administrator	
		School Administrator	
		Teacher	
		General Access	Default
114	Chief School Business Official	General Access	Default
		Teacher	
		School Administrator	
		District Administrator	
119	School Administrator	District Financial User	
		District Administrator	
		School Administrator	Default
		General Access	
120	Supervisor of One Field in Career and Technical Education	Teacher	
		General Access	Default
		District Administrator	
		School Administrator	

A cross-reference for EIS position codes, the default ED360 role assigned to each and the other roles available is now included in the ED360 User Guide and the How to Access My Data Dashboard guide, both of which are available at <https://www.isbe.net/mydashboard>

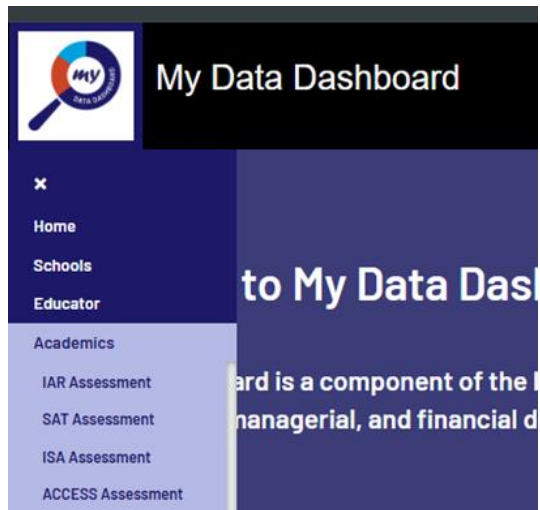
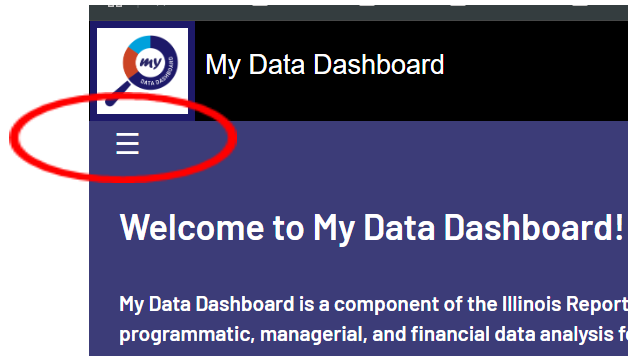


# New Home Page Design



- The previous widget-based dashboard interface has been replaced with a simpler and cleaner site home page.

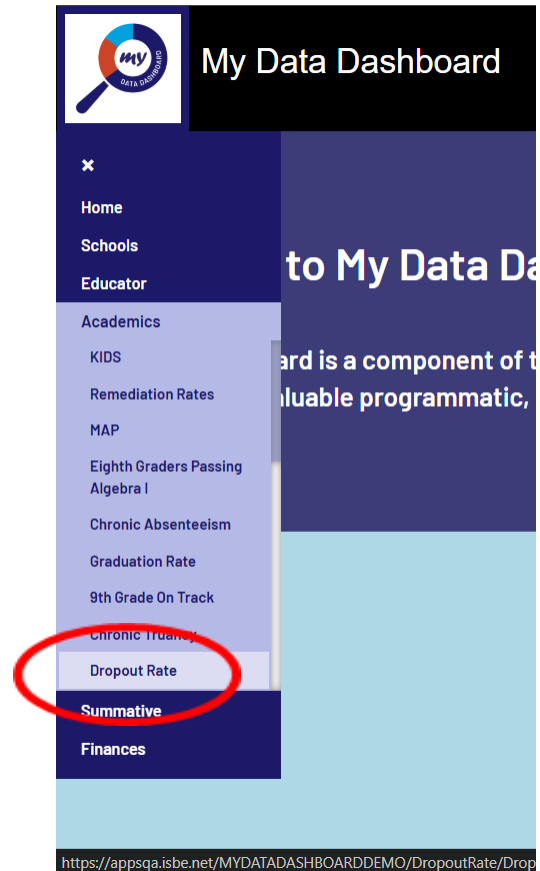
# New Navigation Menu



- Menu no longer “floats.”
- Top page banner stays in view on page, and new menu expands from “hamburger” to reveal options.

# Accessing Dropout Rate

Navigate to  
Academics,  
then select  
Dropout Data  
from the  
submenu.



# Explanation Page

## Dropout Rate

The Explanation below outlines the steps followed in calculating the values reported for you on the Illinois Report Card for this metric. The values displayed are the actual values derived from the local data submitted to ISBE data collection systems. The business rules for this metric and user guide for this application are available below. Click "View Data" at any point to jump directly to screens displaying your complete local data set.

### Explanation

[Step 1](#) Step 2 Step 3 Step 4

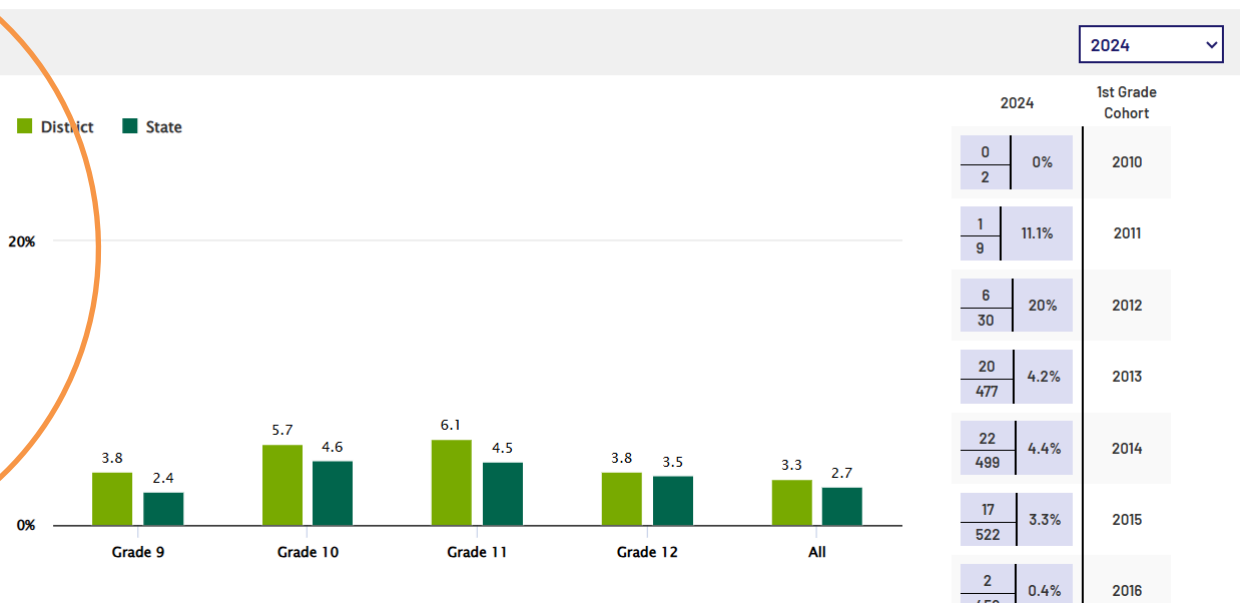
- **"Dropout Rate" is the rate of dropouts in an entity (school, district, state) per enrollment. A dropout is defined as a student who:**
  - Was enrolled in school at some time during the school year, but was not enrolled the following school year, and was expected to be in membership (i.e., were not reported as dropouts the year before),
  - Did not graduate from high school.
  - Did not complete a state or district-approved educational program, and
  - Did not meet any of the following exclusionary conditions:
    - Transfer to another public school district, private school, or state- or district-approved educational

An explanation of the Dropout Data calculations with a walk-through of *your* Dropout Rate raw data.

# Report Card Snapshot Visualization

The visual adapted from the Illinois Report Card, with the most recent and previous years available, and access to rosters.

## Summary of Student Dropout Rate



# Longitudinal Displays

Longitudinal displays show Dropout Rate values over time.

Display by grade will break down dropout data by grade level.

 Summary of Student Dropout Rate Over Time

ALL

Domain Year

202

2.6%

District

2022

3%

2023

3%

2024

3.3%

2021

2.5%

# Student Rosters

Enter Student Firstname or Lastname or SIS ID

Filters

SHOW/HIDE COLUMNS

EXPORT

CURRENT

DROPOUT

REPORT CARD

--	--	--	--	--	--	--	--	--	--	--	--	--	--	--	--	--	--	--	--	--	--	--	--	--	--	--	--	--	--	--	--	--	--	--	--	--	--	--	--	--	--	--	--	--	--	--	--	--	--	--	--	--	--	--	--	--	--	--	--	--	--	--	--	--	--	--	--	--	--	--	--	--	--	--	--	--	--	--	--	--	--	--	--	--	--	--	--	--	--	--	--	--	--	--	--	--	--	--	--	--	--	--	--	--	--	--	--	--	--	--	--	--	--	--	--	--	--	--	--	--	--	--	--	--	--	--	--	--	--	--	--	--	--	--	--	--	--	--	--	--	--	--	--	--	--	--	--	--	--	--	--	--	--	--	--	--	--	--	--	--	--	--	--	--	--	--	--	--	--	--	--	--	--	--	--	--	--	--	--	--	--	--	--	--	--	--	--	--	--	--	--	--	--	--	--	--	--	--	--	--	--	--	--	--	--	--	--	--	--	--	--	--	--	--	--	--	--	--	--	--	--	--	--	--	--	--	--	--	--	--	--	--	--	--	--	--	--	--	--	--	--	--	--	--	--	--	--	--	--	--	--	--	--	--	--	--	--	--	--	--	--	--	--	--	--	--	--	--	--	--	--	--	--	--	--	--	--	--	--	--	--	--	--	--	--	--	--	--	--	--	--	--	--	--	--	--	--	--	--	--	--	--	--	--	--	--	--	--	--	--	--	--	--	--	--	--	--	--	--	--	--	--	--	--	--	--	--	--	--	--	--	--	--	--	--	--	--	--	--	--	--	--	--	--	--	--	--	--	--	--	--	--	--	--	--	--	--	--	--	--	--	--	--	--	--	--	--	--	--	--	--	--	--	--	--	--	--	--	--	--	--	--	--	--	--	--	--	--	--	--	--	--	--	--	--	--	--	--	--	--	--	--	--	--	--	--	--	--	--	--	--	--	--	--	--	--	--	--	--	--	--	--	--	--	--	--	--	--	--	--	--	--	--	--	--	--	--	--	--	--	--	--	--	--	--	--	--	--	--	--	--	--	--	--	--	--	--	--	--	--	--	--	--	--	--	--	--	--	--	--	--	--	--	--	--	--	--	--	--	--	--	--	--	--	--	--	--	--	--	--	--	--	--	--	--	--	--	--	--	--	--	--	--	--	--	--	--	--	--	--	--	--	--	--	--	--	--	--	--	--	--	--	--	--	--	--	--	--	--	--	--	--	--	--	--	--	--	--	--	--	--	--	--	--	--	--	--	--	--	--	--	--	--	--	--	--	--	--	--	--	--	--	--	--	--	--	--	--	--	--	--	--	--	--	--	--	--	--	--	--	--	--	--	--	--	--	--	--	--	--	--	--	--	--	--	--	--	--	--	--	--	--	--	--	--	--	--	--	--	--	--	--	--	--	--	--	--	--	--	--	--	--	--	--	--	--	--	--	--	--	--	--	--	--	--	--	--	--	--	--	--	--	--	--	--	--	--	--	--	--	--	--	--	--	--	--	--	--	--	--	--	--	--	--	--	--	--	--	--	--	--	--	--	--	--	--	--	--	--	--	--	--	--	--	--	--	--	--	--	--	--	--	--	--	--	--	--	--	--	--	--	--	--	--	--	--	--	--	--	--	--	--	--	--	--	--	--	--	--	--	--	--	--	--	--	--	--	--	--	--	--	--	--	--	--	--	--	--	--	--	--	--	--	--	--	--	--	--	--	--	--	--	--	--	--	--	--	--	--	--	--	--	--	--	--	--	--	--	--	--	--	--	--	--	--	--	--	--	--	--	--	--	--	--	--	--	--	--	--	--	--	--	--	--	--	--	--	--	--	--	--	--	--	--	--	--	--	--	--	--	--	--	--	--	--	--	--	--	--	--	--	--	--	--	--	--	--	--	--	--	--	--	--	--	--	--	--	--	--	--	--	--	--	--	--	--	--	--	--	--	--	--	--	--	--	--	--	--	--	--	--	--	--	--	--	--	--	--	--	--	--	--	--	--	--	--	--	--	--	--	--	--	--	--	--	--	--	--	--	--	--	--	--	--	--	--	--	--	--	--	--	--	--	--	--	--	--	--	--	--	--	--	--	--	--	--	--	--	--	--	--	--	--	--	--	--	--	--	--	--	--	--	--	--	--	--	--	--	--	--	--	--	--	--	--	--	--	--	--	--	--	--	--	--	--	--	--	--	--	--	--	--	--	--	--	--	--	--	--	--	--	--	--	--	--	--	--	--	--	--	--	--	--	--	--	--	--	--	--	--	--	--	--	--	--	--	--	--	--	--	--	--	--	--	--	--	--	--	--	--	--	--	--	--	--	--	--	--	--	--	--	--	--	--	--	--	--	--	--	--	--	--	--	--	--	--	--	--	--	--	--	--	--	--	--	--	--	--	--	--	--	--	--	--	--	--	--	--	--	--	--	--	--	--	--	--	--	--	--	--	--	--	--	--	--	--	--	--	--	--	--	--	--	--	--	--	--	--	--	--	--	--	--	--	--	--	--	--	--	--	--	--	--	--	--	--	--	--	--	--	--	--	--	--	--	--	--	--	--	--	--	--	--	--	--	--	--	--	--	--	--	--	--	--	--	--	--	--	--	--	--	--	--	--	--	--	--	--	--	--	--	--	--	--	--	--	--	--	--	--	--	--	--	--	--	--	--	--	--	--	--	--	--	--	--	--	--	--	--	--	--	--	--	--	--	--	--	--	--	--	--	--	--	--	--	--	--	--	--	--	--	--	--	--	--	--	--	--	--	--	--	--	--	--	--	--	--	--	--	--	--	--	--	--	--	--	--	--	--	--	--	--	--	--	--	--	--	--	--	--	--	--	--	--	--	--	--	--	--	--	--	--	--	--	--	--	--	--	--	--	--	--	--	--	--	--	--	--	--	--	--	--	--	--	--	--	--	--	--	--	--	--	--	--	--	--	--	--	--	--	--	--	--	--	--	--	--	--	--	--	--	--	--	--	--	--	--	--	--	--	--	--	--	--	--	--	--	--	--	--	--	--	--	--	--	--	--	--	--	--	--	--	--	--	--	--	--	--	--	--	--	--	--	--	--	--	--	--	--	--	--	--	--	--	--	--	--	--	--	--	--	--	--	--	--	--	--	--	--	--	--	--	--	--	--	--	--

Enter Student Firstname or Lastname or SIS ID

Filters

SHOW/HIDE COLUMNS

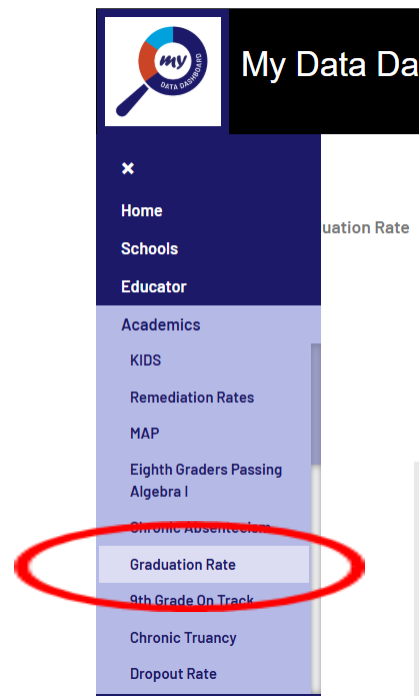
EXPORT

CURRENT						DROPOUT			REPORT CARD										
IEP	LI	EL	Homeless	With Disabilities	Grade Enrolled	1st Year in 9th Grade Cohort	Incl. Dropout Report Card Numerator	Cohort Exit Type	First Name	Last Name	Gender	Race/Ethnicity	IEP	LI	EL	Homeless	With Disabilities	District	School

Rosters support robust searches and filtering of records based on demography, program, and/or Dropout Rate records.

# Accessing Graduation Rate data

Navigate to  
Academics,  
then select  
Graduation Rate  
from the  
submenu.





# Explanation Page

## Graduation Rate

The 4-year, 5-year, and 6-year Composite Graduation Rate is a combination of those years' Adjusted Cohort Graduation Rate. Adjusted Cohort Graduation Rate is the rate of graduates compared to the total number of students in their 4-year, 5-year, and 6-year cohort for schools and student demographic groups. Click through the steps to learn more about the Graduation Rate Calculation.

### Explanation

[Step 1](#)

Step 2

Step 3

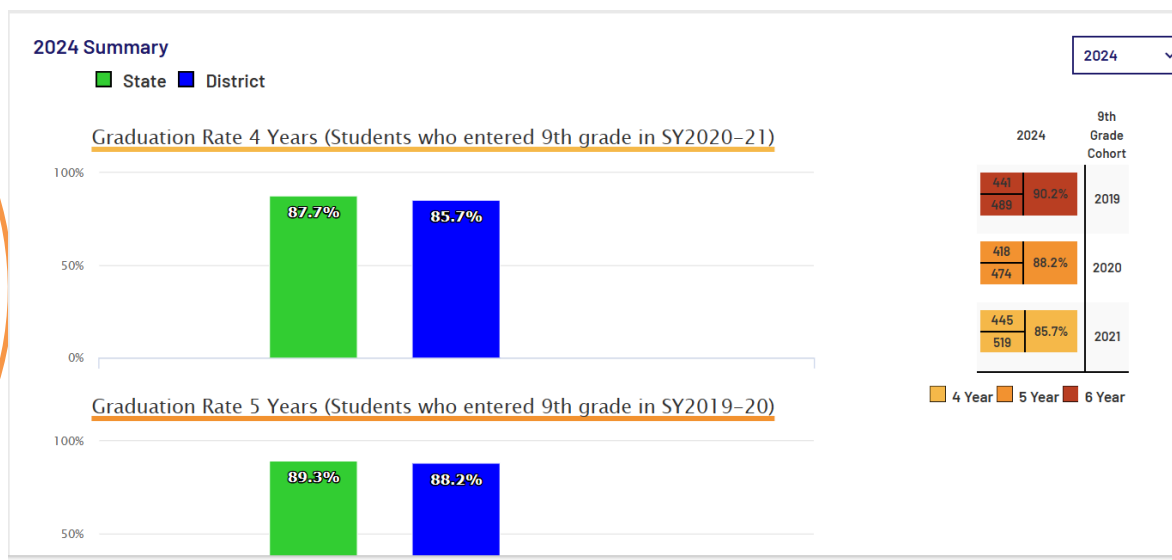
- **First, determine the appropriate adjusted cohort**

- 4 year cohort: school year minus 3 = school year for 9th grade cohort (e.g. for Sy 2021, the four-year cohort consists of students whose first year of 9th grade was 2018)
- 5 year cohort: school year minus 4 = school year for 9th grade cohort (e.g. for Sy 2021, the five-year cohort consists of students whose first year of 9th grade was 2017)
- 6 year cohort: school year minus 5 = school year for 9th grade cohort (e.g. for Sy 2021, the six-year cohort consists of students whose first year of 9th grade was 2016)

An explanation of the Graduation Rate calculations with a walk-through of *your* Graduation Rate raw data.

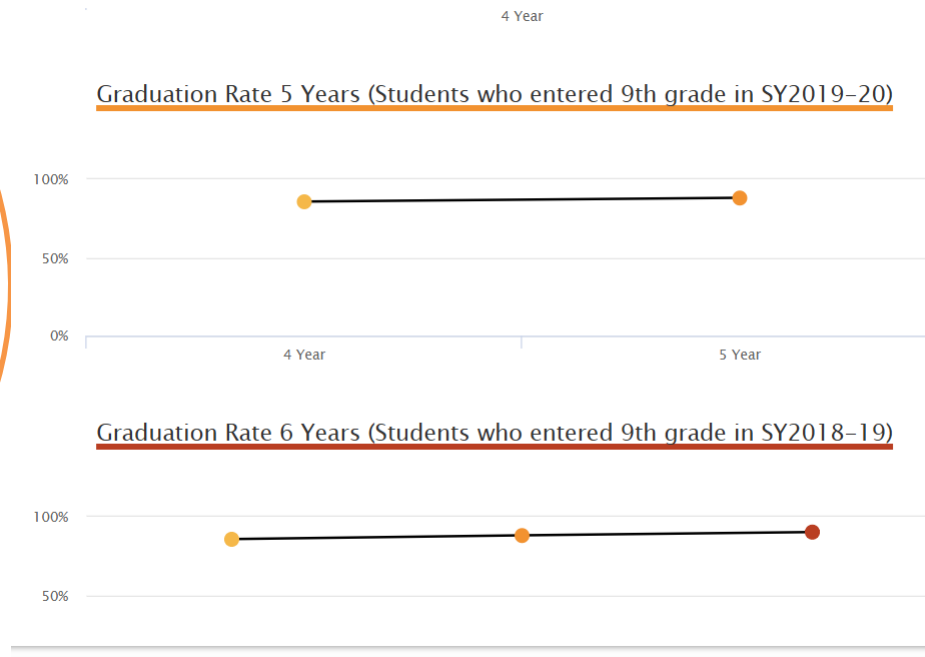
# Report Card Snapshot Visualization

The visual adapted from the Illinois Report Card, with the most recent and previous years available, and access to rosters.



# Longitudinal Displays

Graduation Rate longitudinal displays track the progression of the aggregate graduation rate for each of your 4, 5, and 6 year cohorts with a breakdown of the progression over time.



# Student Rosters

Rosters support robust searches and filtering of records based on demography, program, and/or Graduation Rate records.

Filters

2024

CURRENT											GRADUATION RATE			
First Name	Last Name	SIS ID	Gender	Race/ Ethnicity	IEP	LI	EL	Homeless	With Disabilities	Grade Enrolled	1st Year in 9th Grade Cohort	Incl. in 4yr Rate Report Card Numerator	Incl. in 5yr Rate Report Card Numerator	Incl. in 6 Rate Report Card Numerat
First	Last	111000222	Male	White	Y	Y	N	N	Y	Grade	2020	N	N	N

Filters

2024

SHOW/HIDE COLUMNS

EXPORT

GRADUATION RATE			REPORT CARD										
Incl. in 5yr Rate Report Card Numerator	Incl. in 6yr Rate Report Card Numerator	Cohort Exit Type	First Name	Last Name	Gender	Race/Ethnicity	IEP	LI	EL	Homeless	With Disabilities	District	School
N	N	Retained in	First	Last	Male	White	Y	Y	N	N	Y	Demo	Demo



# Resources

## My Data Dashboard Webpage

- [MDD User Guide](#)
- [How to Access My Data Dashboard](#)
- Short video: [How to Access My Data Dashboard](#)
- [One-pager Overview](#)
- [Accessing Expiring Licensure Details within My Data Dashboard](#)
- [How to Read Metric Displays in My Data Dashboard](#)



# Questions?



Thank you