

# 2025 ILLINOIS REPORT CARD

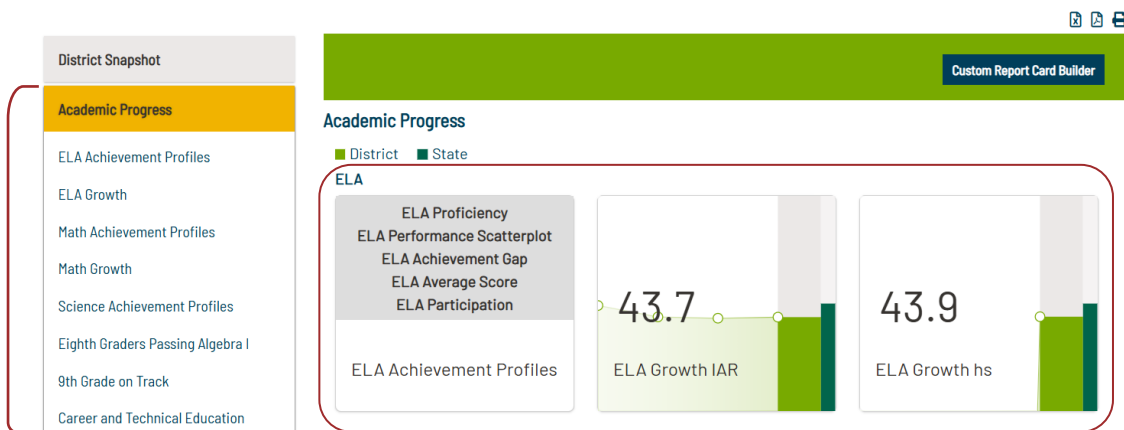


## RUNDOWN

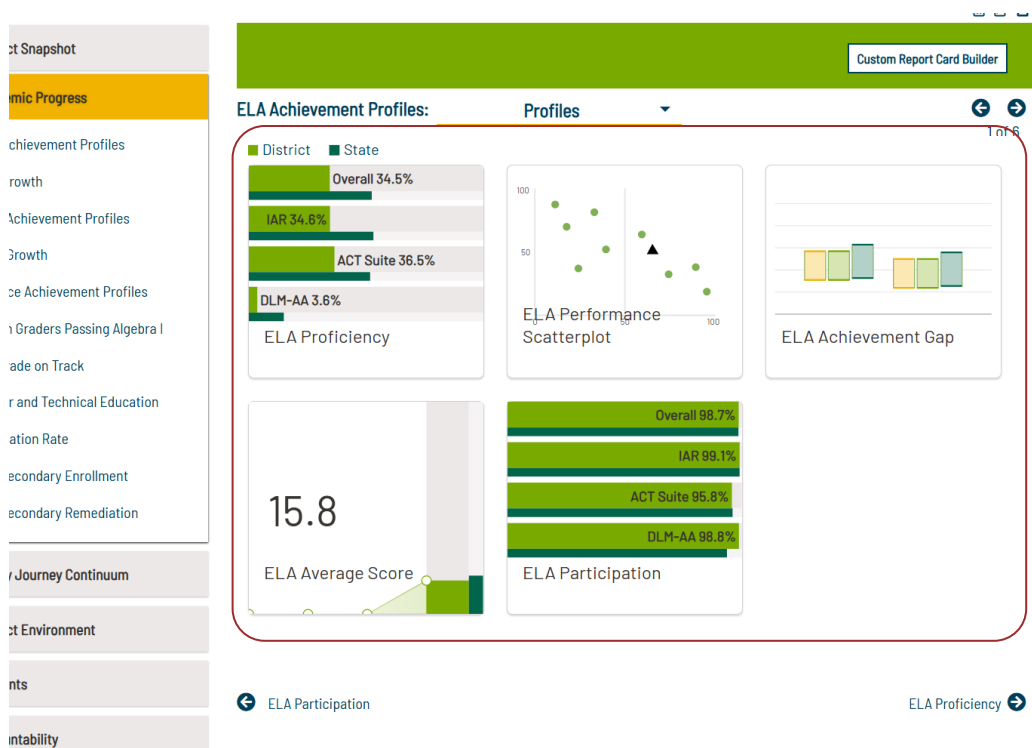
### New Assessment Visualizations

In 2025, Illinois introduced several important updates: the ACT became the new high school assessment, growth reporting expanded to high school, and new aligned performance levels for all general ELA, math and science assessments. To support these changes, the Assessment portions of the Report Card have also been reorganized. Key updates include:

UPDATE #1: **Navigation organized around subject, not test.**



UPDATE #2: **A profile of achievement measures, including proficiency, average scale score and participation.**



UPDATE #3: **Cleaner displays with the ability to add familiar layers of details through toggle and selection menus.**

