



FY 2023 IL-EMPOWER

Newly Designated Schools in Improvement Status: Information for Districts and Schools

November 7 and 9, 2022



Dr. Christine Paxson
Director
ESSA & IL-EMPOWER

Casey Wills
IL-EMPOWER Coordinator
ESSA & IL-EMPOWER

Merle Siefken
IL-EMPOWER Coordinator
ESSA & IL-EMPOWER

Dr. Nikki Combs
IL-EMPOWER Coordinator
ESSA & IL-EMPOWER

Camilla Stewart
IL-EMPOWER Coordinator
ESSA & IL-EMPOWER

Dr. Kathy Moesch
IL-EMPOWER Coordinator
ESSA & IL-EMPOWER

Nick Heckel
IL-EMPOWER Coordinator
ESSA & IL-EMPOWER

Dr. Trevor Chapman
IL-EMPOWER Coordinator
ESSA & IL-EMPOWER



Introductions



Dr. Dana Kinley

Executive Director, Center for Systems of Support



Amy Hyde

Executive Support, Center for Systems of Support



Dr. Christine Paxson

Director, ESSA and IL-EMPOWER



Pam Krushall

Program Support Specialist, IL-EMPOWER



Introductions



Nick Heckel

IL-EMPOWER Coordinator



Dr. Kathy Moesch

IL-EMPOWER Coordinator



Merle Siefken

IL-EMPOWER Coordinator



Camilla Stewart

IL-EMPOWER Coordinator



Casey Wills

IL-EMPOWER Coordinator



Dr. Nikki Combs

IL-EMPOWER Coordinator



Dr. Trevor Chapman

IL-EMPOWER Coordinator



GOALS

Explain IL-EMPOWER, the
Statewide System of
Support

Relate how the Statewide
System of Support can
build the capacity of school
leaders to implement and
sustain effective school
improvement practices



What is Continuous School Improvement?



Collaborative process through which staff and stakeholders identify strengths and weaknesses of the entire school program.



Use the information as a basis for making deliberate, positive, cohesive, and observable changes in measurable student outcomes.

2015: ESSA (Every Students Succeeds Act) reauthorized Elementary Secondary Education Act (ESEA)

Mission behind the fiscal resources

Build capacity of school leaders to implement effective school improvement practices

Focus on, and balance of, both accountability and effective supports

IL-EMPOWER is the Statewide System of Support

Goal is to enable the State's lowest performing and underperforming schools

Underperforming and Lowest Performing schools to ensure continuous improvement in student learning

Authorized by Title 1, Part A, Section 1003 for School Improvement

Improve student achievement and student outcomes

ESSA advances help and support to effectuate school improvement gains

IL-EMPOWER: Federal Grant Program

What is IL-EMPOWER?



IL-EMPOWER Program Org Chart



IL-EMPOWER
Coordinators

IL Public Schools
District & School Leaders
Targeted & Comprehensive

Data Collection Systems

Program Evaluation

Program Requirements



Targeted Support and Improvement

Targeted

- Title I, Part A, Section 1003 School Improvement Grant Funds
- Topical Learning Series
- School Improvement Website
- Technical Assistance from IL-EMPOWER Helpline



Comprehensive Support and Improvement

Comprehensive

- Title I, Part A, Section 1003 School Improvement Grant Funds
- Topical Learning Series
- School Improvement Website
- Technical Assistance from IL-EMPOWER Helpline
- Assigned IL-EMPOWER Coordinator



How can IL-EMPOWER Support School Improvement in your schools?

IL-EMPOWER Coordinators

- Work Directly with Comprehensive Schools
- Expertise in School Improvement
- Technical Assistance to ALL Schools

IL-EMPOWER Webinars

IL-EMPOWER Topical Learning Series

School Improvement Resources

- School Improvement Common Language
- Continuous Improvement Process
- School Improvement Plan Template (optional)
- SMART Goals
- A Year in the Life of School Improvement
- Topical Learning Series
- Monthly Topics & Tasks

Report Card 22: Newly Designated Schools



Report Card 2022: Newly Designated Schools Eligible for Early Exit from Improvement Status

Report Card 2022

(School Year 2022-23)

Initial summative designation of Targeted or Comprehensive

Planning Year

School Improvement Status

Report Card 2023

(School Year 2023-24)

Are newly designated in Comprehensive or Targeted improvement status in 2022;

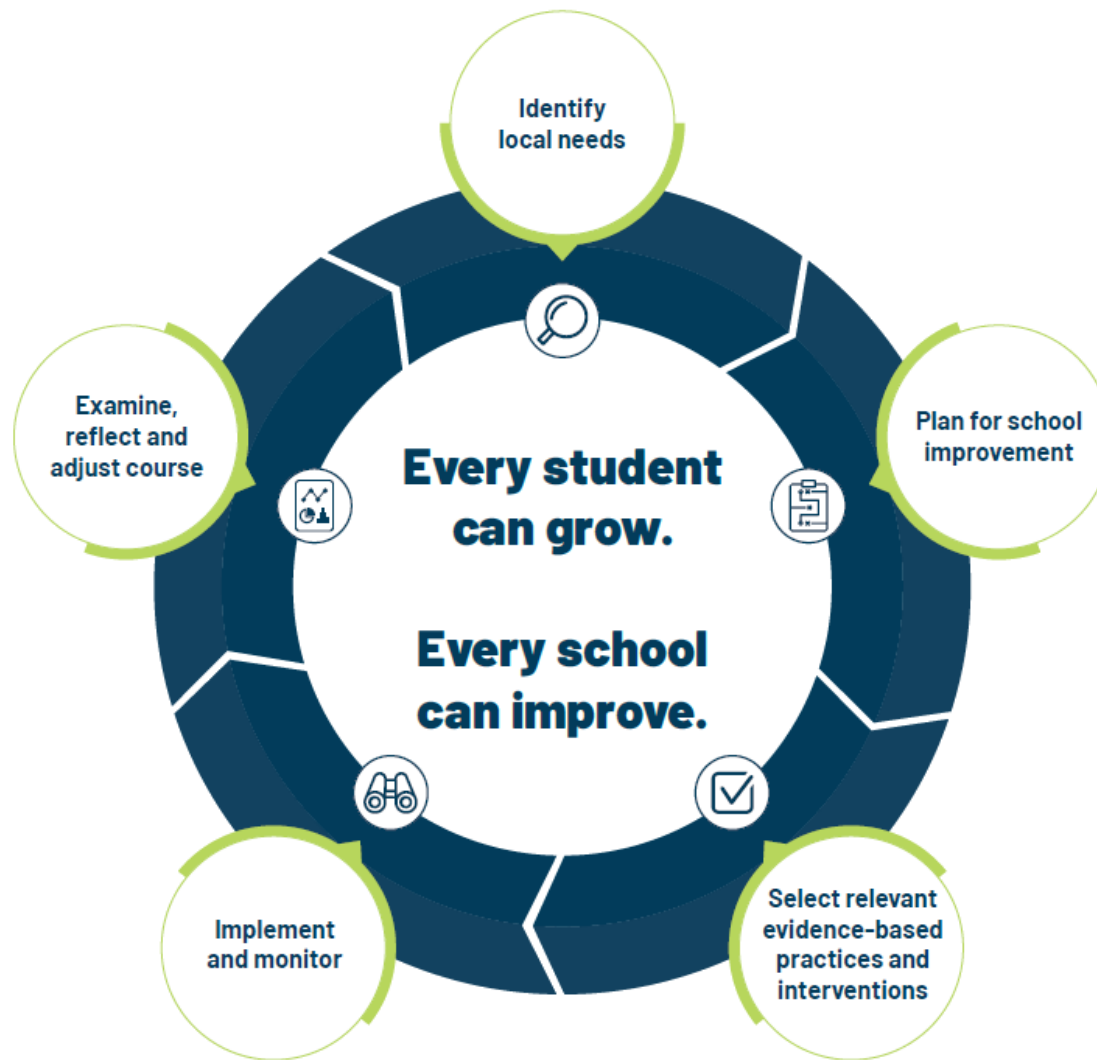
Are in at least one of three eligibility groups described below:

- Schools missing $\geq 30\%$ of 2021 accountability data,
- Schools in the top 30% performance in the state as indicated by the 2019 index score, or
- Schools where a student group population has shifted by 30% since 2019.

Have assessment participation rates of $\geq 95\%$ in all subjects; and

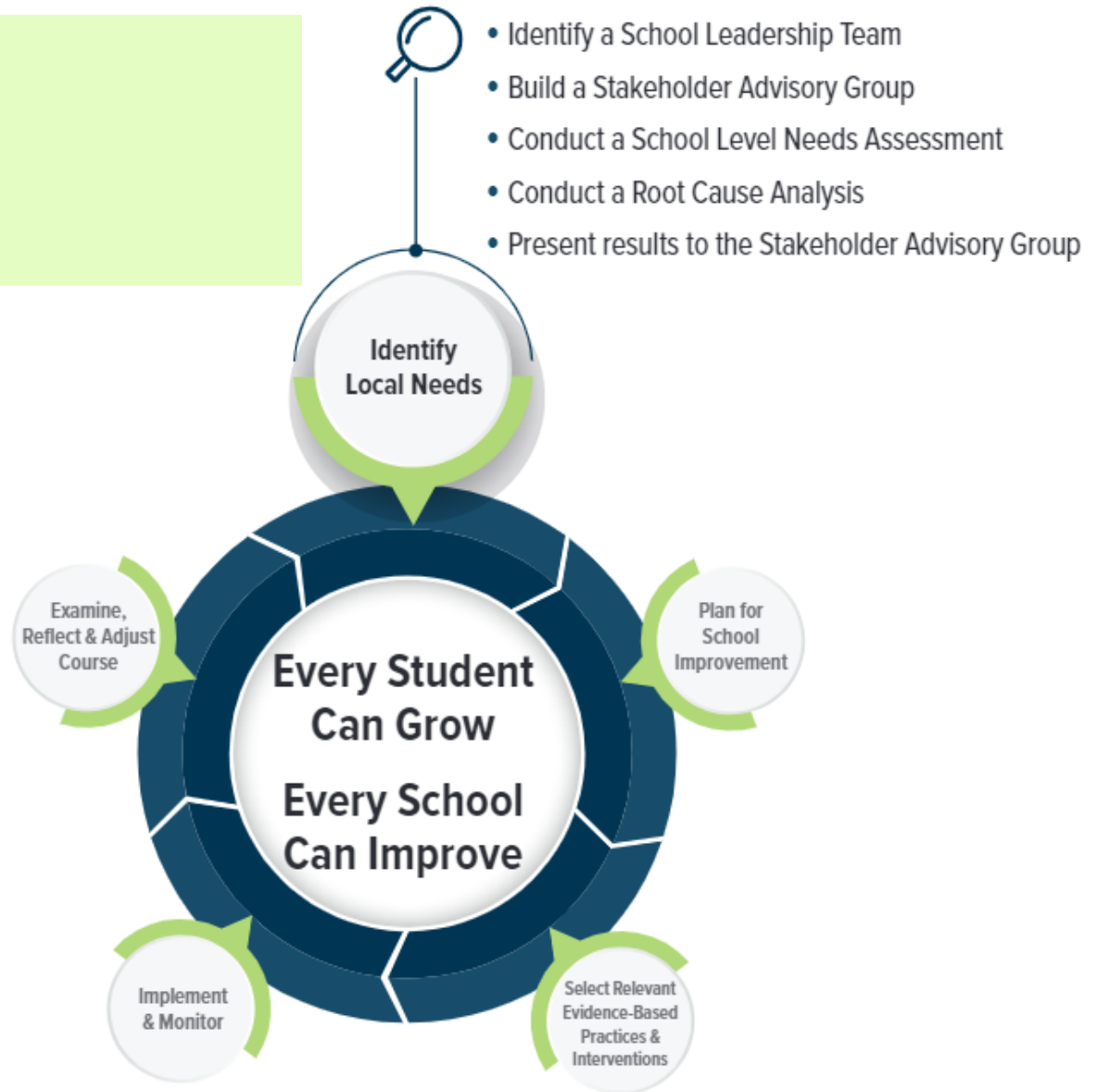
Receive an Exemplary or Commendable designation in 2023.

Continuous Improvement Process





Identify Local Needs





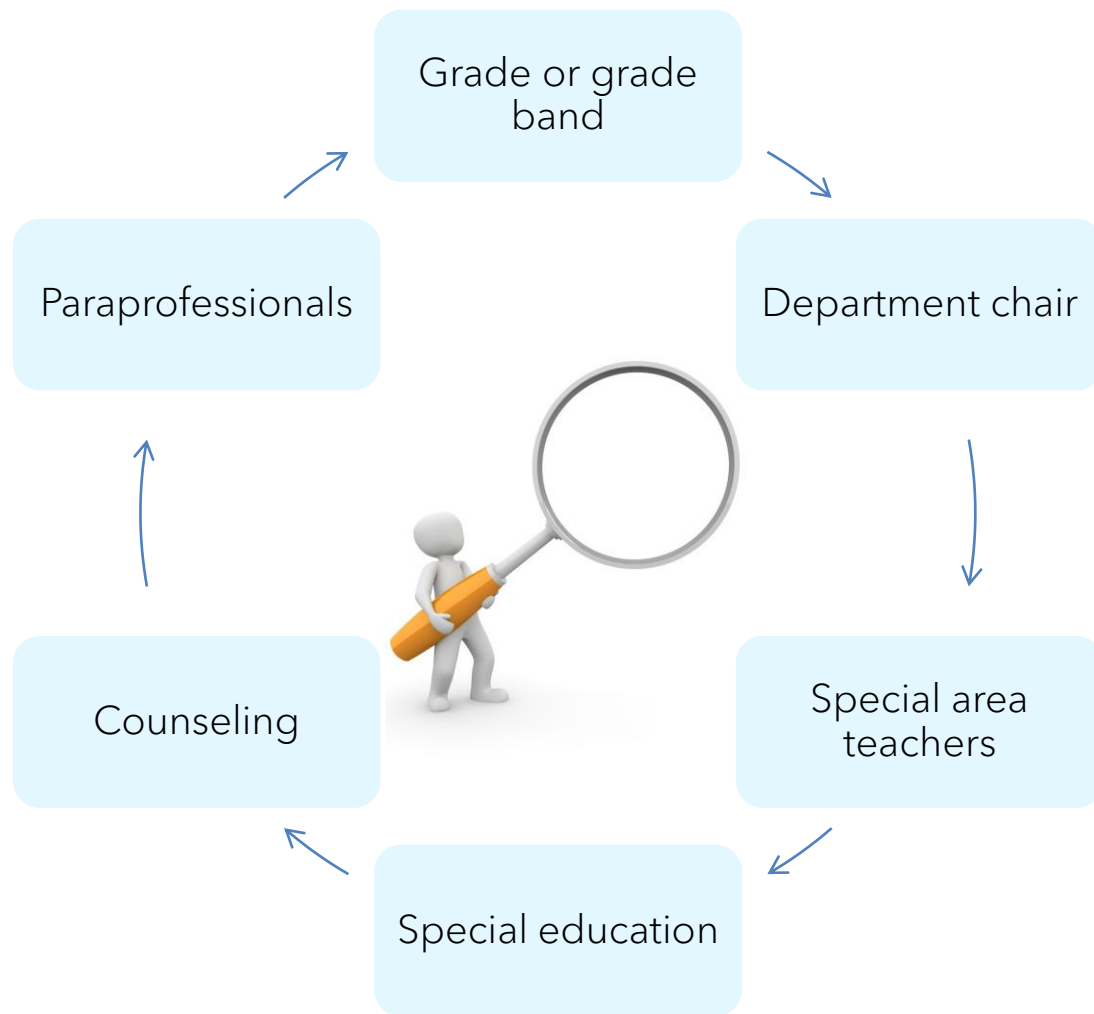
What is School Leadership Team?



A group of school-level staff and stakeholders whose focus is to develop, implement, monitor, and evaluate the School Improvement Plan.



School Leadership Team Members





What is the Purpose of the Stakeholder Advisory Group?

Engages the community to build understanding about the needs and the improvement processes of the school.

Provides an avenue for varied perspectives and concerns impacting the school and community.

Acts in an advisory capacity



How do the Stakeholder Advisory Group and the School Leadership Team differ?

Stakeholder Advisory Group (SAG)

- Diverse membership includes students, community members, local business partners, parents, teachers, and school leaders.
- Gathers varied perspectives and concerns impacting school community.
- Acts in an advisory capacity regarding SIP.
- Frequency of meetings may vary based on schools and community.
- Purpose is to engage the community in an understanding of the needs and improvement processes of the school and district.

School Leadership Team (SLT)

- Membership includes teachers, teacher leaders, school specialists, and school leaders.
- Develops, implements, evaluates, approves, and monitors the School Improvement Plan.
- Meets monthly or bimonthly.
- Purpose is to engage the school-level community in the development and oversight of the School Improvement Plan and champion the work of school improvement.



School-Level Needs Assessment

Conducted during the planning year of newly designated comprehensive and targeted schools.

Ensures that initial school improvement plans are developed based on high-quality data.



School-Level Needs Assessment Instruments

School Excellence Framework (SEF)

- Chicago Public Schools

Illinois Quality Framework Supporting Rubric (IQFSR)

- Schools outside of Chicago Public Schools
- Complete using hard copy and submit in IWAS by January 31, 2023



Root Cause Analysis

Identify Local Needs - Conducting a Root Cause Analysis



A root cause analysis is a systematic process for identifying the underlying (or "root") causes of the challenges that organizations or institutions face. A root cause analysis is an approach to problem-solving through discussion to dig deeper than the surface symptoms and uncover the underlying causes.

Addressing the root causes of the problems or challenges your system faces, rather than addressing obvious symptoms, enables stakeholders to make lasting and impactful systemic changes.

Steps	Guiding Questions
Define the Problem	<ul style="list-style-type: none">What is the nature of the problem?What happened? (Example: The achievement gap between groups continues from year to year with little to no change in proficiencies among student groups.)Where and when does it occur?To whom does it happen?How does it affect our goals?
Identify Possible Causes & Categories	<ul style="list-style-type: none">What factors are contributing to the problem?What is causing a particular factor (e.g., people, time, resources)?How can causes be grouped together in categories?
Dig Deeper into "Why?"	<ul style="list-style-type: none">Why is it happening?How come?Why would that be?What's the reason for that?Why is that?That's because ...I wonder if ... <p>If any response reveals a cause that is out of your control, keep asking questions. Stop when you have identified two-four potential root causes that are within your scope of influence to impact in the school setting.</p>
Select Root Cause(s) as the Focus for Your School Improvement Plan	<p>If we address the root cause(s), can we have significant impact on the problem statement?</p> <ul style="list-style-type: none">Yes. The root cause(s) is worthy of focus in your School Improvement Plan.No. The cause may not be a priority for our efforts, or it may not be a root cause

The results of the root cause analysis will now be used as you proceed to the next component. See [Continuous School Improvement Process: Plan for school improvement](#).

Completed during the Planning Year

An approach to problem solving that digs deeper to uncover underlying causes

Informs initial school improvement planning efforts



Plan for School Improvement



- Develop a School Improvement Plan with the following elements:
 - SMART Goals
 - Key Activities, Milestones, Timelines, Funding Sources, and People Responsible for Implementation
 - Local assessment(s) to measure academic progress
 - Monitoring Plan that includes all SMART Goals



School Improvement Plan Examples

School Improvement Plan Example*

School:	<i>City High School</i>
Year:	<i>2022-2023</i>
Date Completed:	<i>June 3, 2022</i>
School Board Approval Date:	<i>August 2022</i>

Name	Title
<i>Harry W.</i>	<i>Principal</i>
<i>Mary V.</i>	<i>District Curriculum Director</i>
<i>LeAnne J.</i>	<i>English department chair</i>
<i>Nevaeh T.</i>	<i>Special Education teacher</i>
<i>Jamar S.</i>	<i>School Counselor</i>
<i>Su Lin A.</i>	<i>Math department chair</i>
<i>Collin P.</i>	<i>Social Science teacher</i>
<i>Casey R.</i>	<i>Science teacher</i>
<i>Andrea H.</i>	<i>Dean of Students</i>

Elementary & High School SIP Examples

*All schools in comprehensive improvement status or targeted improvement status must have a School Improvement Plan with a minimum of two SMART goals. For the purposes of this example, only Goal #1 has been completed.








The Importance of SMART Goals

What is a SMART goal and why is it important?

A goal is much more than simply saying that you want to learn about and/or improve on something; rather, it more specifically describes what you want to achieve. SMART goals, with their detailed structure, provide focus as well as a clear idea of what you want to achieve. This structure makes it easier to:

- plan relevant action steps/activities
- measure progress toward achieving the goal
- know when you have met your goal

	 SPECIFIC	 MEASUREABLE	 ACHIEVABLE	 RELEVANT	 TIMEBOUND
Definition	When setting a goal, be specific, focused, and clear.	Use metrics to keep your plan on track and measure results.	Know how you will accomplish the goal and if you have the tools/skills needed.	Focus your goal so it aligns with the school and district vision/mission and larger, long-term goals.	Set a timeline for action items, benchmarks and deliverables.
Guiding questions	Answer the "W" questions: <ul style="list-style-type: none">• Who should be involved?• What do we want to accomplish?• When do we want to accomplish the goal?• Where will the goal have an impact? (school, grade level, department)• Why do we want to accomplish the goal?• Which requirements or constraints could influence the goal?	How much? How will I know when it is accomplished? What are indicators of progress?	What steps are necessary to achieve the goal? What steps to take, in what order, on what timeline and involving whom?	Why is this goal important to our students and school? Will achieving this goal help our students and school? Does this match our identified need? How will this goal contribute toward our long-term goals? Does this goal align with the district and other school goals?	Does my goal have a deadline? What is the timeline to achieve this goal?



Program Requirements

Implement curriculum aligned to Illinois Learning Standards

Implement or continue use of local assessments

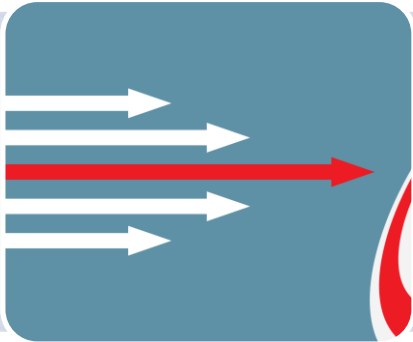
Attend program-specific information meetings hosted by ISBE

Participate in peer learning opportunities for district and school leaders during the Illinois ESSA Conference

Participate in program evaluation activities



A Year in the Life of School Improvement



Guide the process and pacing of continuous improvement



Timeline is not absolute, but instead a guide



Planning Year:
October-June



Implementation
Years: May -April



Monthly Topics of School Improvement

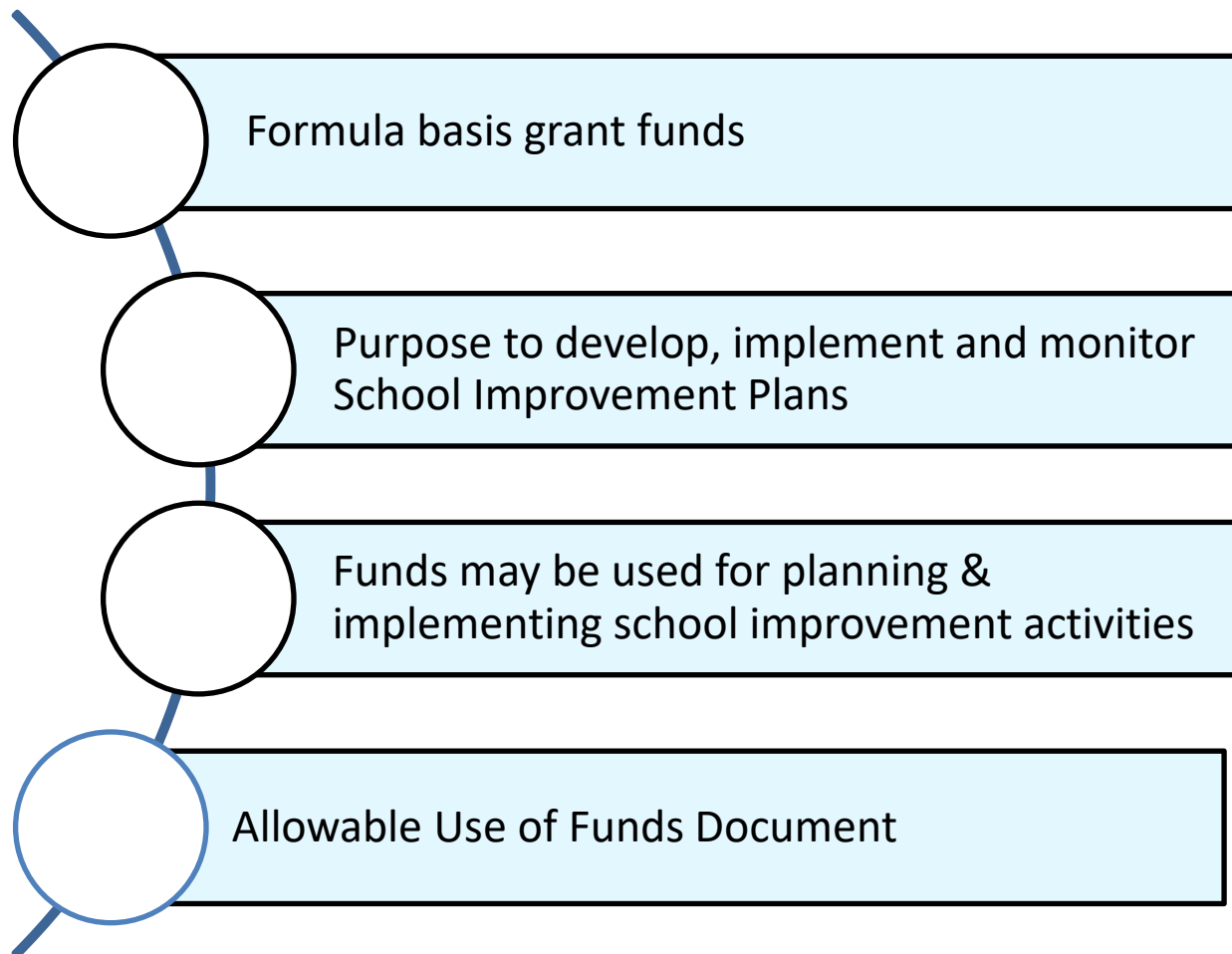
Monthly topics and tasks - planning year



	Topics and tasks	Essential questions
October	<ul style="list-style-type: none">• Receive summative designation letter.• Respond to checklist in letter.	<ul style="list-style-type: none">• How will you interpret and communicate your summative designation to stakeholders?
November	<ul style="list-style-type: none">• Attend district/school information meeting as part of leadership team.• Attend initial meeting with an IL-EMPOWER coordinator (comprehensive schools) to discuss needs and support for school.• Identify school leadership team.• Begin application in IWAS for the planning year grant application.• Begin viewing IL-EMPOWER Learning Series 1 and 2.	<ul style="list-style-type: none">• Who should be on the school leadership team to guide the school improvement planning and implementation process?• What is a realistic monthly meeting schedule for the school leadership team?







Allowable Use of School Improvement Funds





Reporting Requirements: Program & Fiscal Timelines & Due Dates

Reporting Period	Quarterly Expenditure & Program Reporting	
	Report Type	Due Date
December 1 through December 31	IWAS Fiscal Reporting: Quarterly Expenditure Report (QER) 	January 20
January 1 through March 31	IWAS Fiscal Reporting: Quarterly Expenditure Report (QER) 	April 20
April 1 through June 30	IWAS Fiscal Reporting: Quarterly Expenditure Report (QER) 	July 20
December 1 through June 30	IWAS Program Reporting: School Improvement Report (SIR) 	July 20



School Improvement Topical Learning Series

[Home](#) > [School Improvement & Accountability](#) > [Continuous School Improvement & IL-EMPOWER](#) > [School Improvement Topical Learning Series](#)

SCHOOL IMPROVEMENT &
ACCOUNTABILITY
Continuous School Improvement &
IL-EMPOWER

School Improvement Topical
Learning Series

SCHOOL IMPROVEMENT & ACCOUNTABILITY

SCHOOL IMPROVEMENT TOPICAL LEARNING SERIES

[Navigating the Continuous School Improvement & IL-EMPOWER Website](#)

- [Presentation](#)

SERIES 1: GETTING STARTED WITH SCHOOL IMPROVEMENT

- [Introduction to School Improvement](#) – This video is a brief overview of IL-EMPOWER and school improvement
 - [Presentation](#)
- [Mobilizing the Statewide System of Support](#) – This video outlines how the Statewide System of Support is organized to provide guidance, support, and resources to Targeted and Comprehensive schools
 - [Presentation](#)
- [Implementing the Illinois Continuous School Improvement Process](#) – This video introduces The Illinois Continuous Improvement Process and gives an overview of the components and elements that play a critical role in successful school improvement efforts
 - [Presentation](#)
- [A Year in the Life of School Improvement](#) – This video highlights the detailed, month-by-month timeline in the resource titled A Year in the Life of School Improvement
 - [Presentation](#)
- [School Improvement Monthly Topics](#) – This video orients district and school leaders to the essential questions at the center of continuous school improvement
 - [Presentation](#)
- [School Improvement Common Language](#) – This video is an introduction to the common language of continuous school improvement
 - [Presentation](#)

What are your next steps?

SCHOOL IMPROVEMENT & ACCOUNTABILITY

Continuous School Improvement & IL-EMPOWER

- Targeted and Comprehensive Schools
- Continuous School Improvement Process
- School Improvement Topical Learning Series

RESOURCES

- FY 2023 Title I, Part A, Section 1003 School Improvement Allocations 
- School Improvement Common Language 
- School Improvement Fact Sheet 
- The Continuous School Improvement Process 

SCHOOL IMPROVEMENT & ACCOUNTABILITY

CONTINUOUS SCHOOL IMPROVEMENT & IL-EMPOWER



IL-EMPOWER is Illinois' Statewide System of Support for School Improvement. It is a federal program authorized under Title I, Part A, Section 1003 of the Every Student Succeeds Act, 2015 (ESSA) and is administered by the Illinois State Board of Education. IL-EMPOWER seeks to build the capacity of school leaders to implement and sustain effective school improvement practices.

School Improvement is a continuous, collaborative process through which staff/ stakeholders identify strengths and weaknesses of the entire school program and use the information as a basis for making deliberate, positive, cohesive, and observable changes in measurable student outcomes.



Continuous School Improvement Process



Newly Designated Targeted or Comprehensive Schools Start Here!



School Improvement Topical Learning Series





School	Report Card 2022	Report Card 2019	Report Card 2018
Algonquin	Targeted	Targeted	Targeted
Alton	Targeted	Targeted	Targeted
Alton	Targeted	Targeted	Targeted
Alton	Targeted	Targeted	Targeted
Alton	Targeted	Targeted	Targeted
Alton	Targeted	Targeted	Targeted
Alton	Targeted	Targeted	Targeted
Alton	Targeted	Targeted	Targeted
Alton	Targeted	Targeted	Targeted
Alton	Targeted	Targeted	Targeted

School Improvement Status and grant funding continue for four years regardless of changes in annual summative designations. This resource shows separate tables reflecting School Improvement Status for schools identified on Report Card 2022, Report Card 2019, and Report Card 2018.

Visual School Improvement Status

Upcoming Webinars

- FY 2023 IL-EMPOWER Newly Designated in Improvement Status Information Webinar for Districts and Schools - sign up here 
Monday, November 7, 2022 (2:00-3:00 p.m.) OR Wednesday, November 9, 2022 (10:00-11:00 a.m.)
- FY 2023 School Improvement Planning Grant Application Webinar - sign up here 
Tuesday, November 15, 2022 (3:00-4:00 p.m.) OR Wednesday, November 16, 2022 (10:00-11:00 a.m.)





IL-EMPOWER Helpline



il_empower@isbe.net

(217) 524-1817



Questions & Answers





IL-EMPOWER Helpline



il_empower@isbe.net

(217) 524-1817