



FALL 2018 PROGRESS REPORT

Dear PEP Participants and Stakeholders:

The 2017-2018 year of the Partnership for Educator Preparation (PEP) brought many important highlights – completing Year 1 of the two-year pilot program in June, kicking off Year 2 of the statewide pilot in October including expanding the scope to look at not only teacher programs in Illinois but also administrative and school support programs, further refinement of the process and data platform informed by feedback from the PEP Steering Committee and participating Illinois institutions of higher education, and many more learnings to support stronger educator preparation programs and in turn stronger teachers for children throughout the state.

The goal of this new system and the detailed reporting process is to help ensure all new Illinois teachers are learner-ready on day one in the classroom, and that data is used as a tool for continuous improvement in strengthening teacher preparation statewide in the long term. This past year has brought us much closer to that goal, with the 2018-2019 year being the final pilot period before statewide implementation.

We thank all of the participating institutions, their staff and leadership, the PEP Steering Committee, and the committed team at ISBE for their important work in this past year.

Cristina Dimmitt-Salinas

Division Supervisor of Educator Effectiveness

Illinois State Board of Education

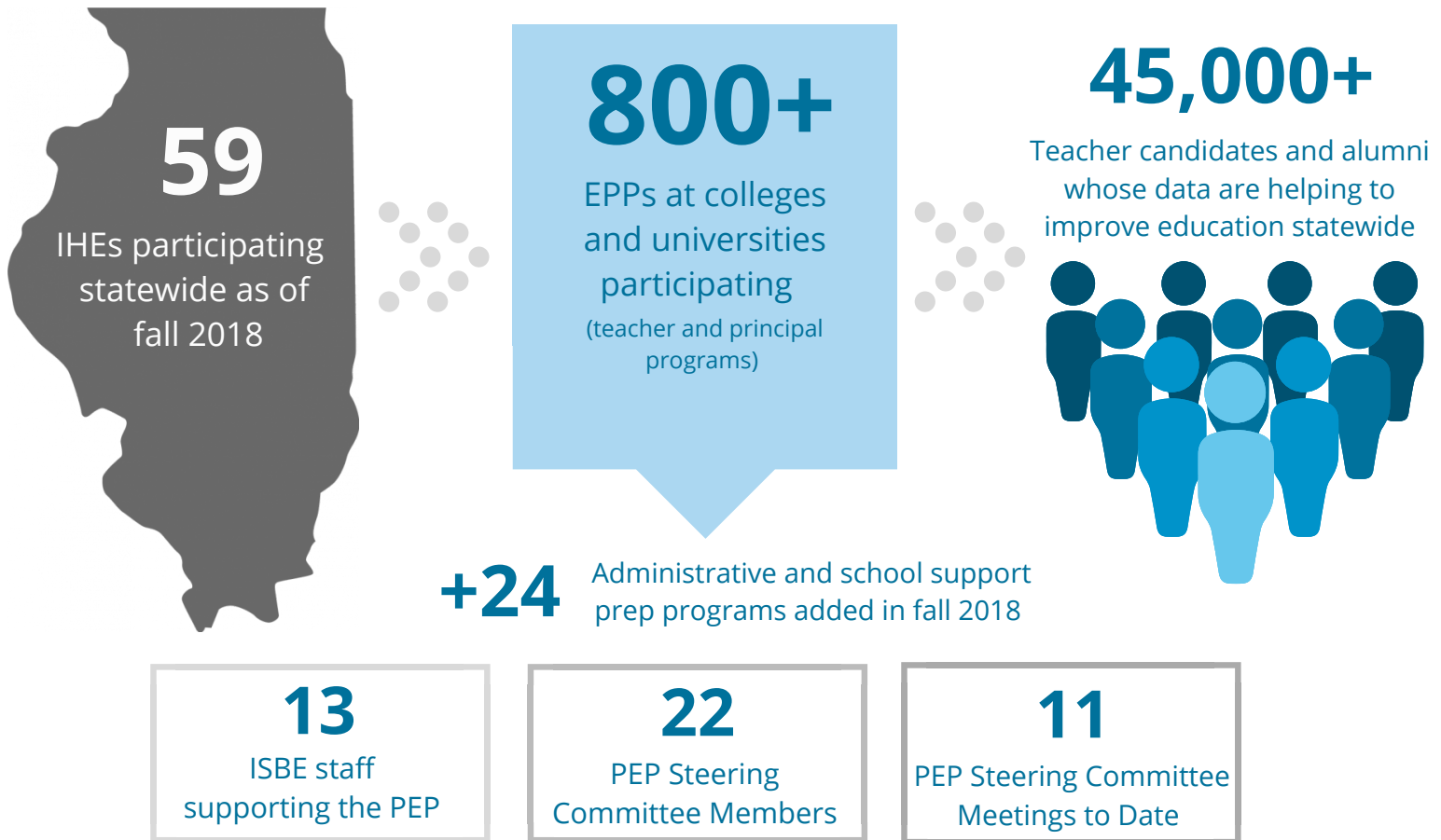
cdimmitt@isbe.net

Statewide Pilot Year 1 – Complete

2017-2018 Snapshot

Starting in October 2017, 56 institutions of higher education with educator preparation programs (EPPs) throughout Illinois collected comprehensive data on their programs and teacher candidates that was then compiled and submitted to ISBE via the new Partnership for Educator Preparation digital platform in April 2018. Throughout the summer, ISBE organized the data and in late June returned reports to each institution providing detailed information and analytics based on their submitted data, along with resources on how to read and use the reports for program improvement.

PEP Statewide Pilots to Date - By the Numbers



Pilot Year 1 Takeaways from Illinois colleges and universities:

Pilot Year 1 Participant Survey Results (October 2018)

Overarching Findings:

90%
of participating institutions agreed:

- Using data for improvement purposes will result in increased teaching candidate success
- Their institution is interested in using the data to help further institution performance
- The new PEP process resulted in more information than APR 1.0
- ISBE provided adequate support during Pilot Year 1

80%
of participating institutions agreed:

- The data template was easy to use
- The data dictionary provided sufficient descriptions
- The data reports accurately represent EPPs in Pilot Year 1

Continued

Pilot Year 1 Takeaways from Illinois colleges and universities:

How institutions will use the new data:

"The data will be used by the school of education faculty and staff to guide a strategic plan for curriculum changes, program updates, and specific licensure testing assistance."

"The data will drive future decisions regarding program continuation, curriculum, and program updates."

"Future uses include data use for national accreditation."

Examples of continuous improvement:

"We have better communication between the licensure officer, assessment coordinator, institutional research, and the advisors."

"One area of improvement is knowledge across the institution of the types and amounts of data we need and use."

"Much more attention is being paid to more specific data (e.g. ACT scores) and how it can be used to make programmatic and curricular decisions."

Areas for improvement:

"The error checks after data upload should be adjusted to take into consideration that students are not required to submit a social security number to the ELIS system..."

"Please consider remote meeting options for your mandatory PEP meetings."

"It would be lovely if the raw data from the completer's survey...could also be given completed in charts and graphs."

Continuous Improvement Communities of Practice

ISBE and BranchED Catalyze a New Partnership Model in Teacher Prep

Earlier this year, the Illinois State Board of Education enlisted the support of the Branch Alliance for Educator Diversity (BranchED) to develop and launch a pilot initiative aimed at establishing Continuous Improvement Communities of Practice (CICPs), and work toward the goal of all P-12 students having 'learner-ready teachers' day one in the classroom, particularly teachers certified in high need areas. This model is powerful in how it's advancing the effectiveness of collaboration among EPPs and their public-school district partners in order to better recruit, train, and retain teachers in high-need subjects and in high-need schools.

On December 6-7, an in-person mid-year event will take place hosted by the Joyce Foundation in Chicago. This will allow the CICPs the opportunity to collaborate as a cohort once again, give updates on their action plan progress, and be able to plan out the remainder of the pilot year.

Statewide Pilot Year 2 – Underway

2018-2019 Snapshot

The second year of the PEP statewide pilot (Fall 2018 – Spring 2019) provides an additional year of transition and testing into the new data reporting system for Illinois higher education institutions and their educator preparation programs, with a focus on improving accountability systems, and expands to include administrator and school support preparation programs in addition to teacher programs.

To guide this expanded scope in the final pilot year, the PEP Steering Committee has gained new members to represent the principal voice and who are experts in principal training in Illinois. See Steering Committee membership list on page 6.



This represents a significant growth in scale and programs served from the initiation of the PEP with the mini-pilot in 2016 that included 29 institutions of higher education and 90 EPPs, to all 59 colleges and universities statewide providing more than 800 teacher and 24 principal preparation programs during the 2018-2019 school year.

October Participant Meeting: Looking Back at Year 1, Preparing for Year 2

On Monday, October 29, 65 representatives from all of the participating colleges and universities gathered in Bloomington to debrief on the first year of the statewide pilot (which included several discussions and live surveying to gather and address feedback on the process), officially kick off Year 2, provide resources to set institutions up for success in the year ahead, and finally, to gather participant input on the eventual public release of this new data in 2020.

Through roundtable discussions and live electronic surveying, participants were able to answer questions and share their input with the full group to help share learnings across institutions and help ISBE continue to refine the process to best support institutions and PEP goals.

Starting in 2020, data reports will be publicly available that will include qualitative and quantitative data and information about colleges and universities with approved preparation programs. In planning for this, the ISBE PEP team has begun engaging participating institutions to provide input on the process. Beginning in 2019, ISBE will engage a PEP subcommittee to lead the design and development a mock public report that will then be shared with participating institutions for input in the fall of 2019. During the October meeting, participants began to share initial feedback, including potential names for the public report.

Upcoming Resources to Support Institutions in Year 2

Through feedback in recent meetings and conversations, the value of forums to ask questions and clarify instructions has become evident. As a result, the ISBE PEP team is offering a variety of recorded and live webinars, as well as an optional in-person meeting to support institutions in the data gathering and preparation process ahead of the February 1 data window opening.

Recorded Webinars

Two newly recorded webinars are now available on the ISBE PEP webpage, including one geared toward teaching programs, and one for school support and administrative programs. Visit www.isbe.net/Pages/pep-statewide-data-collection.aspx and select the “Webinars” tab to view:

- 11/13/2018: Data Collection Teaching Programs
- 11/13/2018: Data Collection School Support and Administrative Programs

Upcoming Live Webinars

This live webinar series provides participants an opportunity to ask questions as well as discuss the data templates and collection process for the Pilot Year 2 data collection for teaching, school support, and administrative programs.

- Tuesday, December 4: 10 – 10:30 a.m.
- Monday, December 17: 2 – 2:30 p.m.
- Friday, January 4: 11 – 11:30 a.m.
- Wednesday, January 16: 9 – 9:30 a.m.
- Thursday, January 24: 10 – 10:30 a.m.

Visit the PEP Statewide Data Collection webpage to learn more and register:

www.isbe.net/Pages/pep-statewide-data-collection.aspx

Optional February 2019 Meeting

On February 6, 2019, ISBE will host an optional in-person meeting at the Alumni Center in Bloomington to provide participating higher education institutions with a platform to discuss and identify uses for their new program data. This is an opportunity for interested IHEs to look specifically at the questions that support the various data elements, in addition to discussions on additional continuous improvement and accountability strategies. More details will be shared by email in the coming weeks.

Illinois Joins 14 Other States in Teacher Preparation Data Network

Illinois and the PEP have joined forces with 14 other states across the country in an effort to improve teacher preparation at both a state level and nationwide.

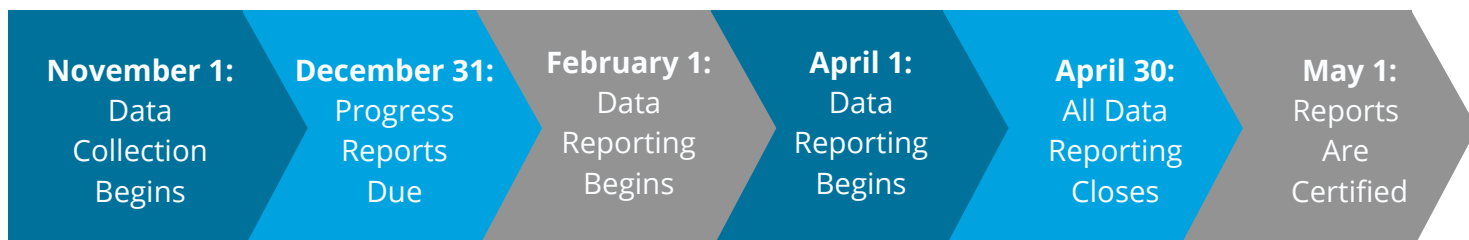
Objectives of the network include seeking to identify commonalities across participating states and create and facilitate meaningful and practical collaboration and learning opportunities, addressing common problems of practice and develop effective strategies to address them, and implementing pilots to test innovation and disseminate results among other states.

TPDN Participant States:

California	Michigan
Delaware	Mississippi
District of Columbia	Missouri
Georgia	Nebraska
Hawaii	Nevada
Idaho	Virginia
Illinois	Washington
Indiana	

Major Dates for Year 2 of PEP Statewide Pilot

2018-2019 PEP Program Reporting Dates:



Remaining Key Milestones of the PEP Process



August 2016

PEP Steering Committee recommends improved data collection system to ISBE for better accountability, transparency



Fall 2016 - Spring 2017

Mini-Pilot: 36 educator prep programs, 76% of teaching candidates in the state, submit applications for initial pilot to test recommended system



Fall 2017 - Spring 2018

Statewide Pilot - Year One: All Illinois institutions with educator preparation programs participate in Year One of two-year state pilot



Fall 2018 - Spring 2019

Statewide Pilot - Year Two:

All Illinois institutions with educator, administrator, and school support preparation programs participate in Year Two of statewide pilot.



Fall 2019 - Spring 2020

Implementation: ISBE replaces current annual reporting with the new system and shares results with educator preparation programs. Release of data important for external stakeholders to be made public in 2020.

2018-2019 PEP Steering Committee Members

- **Jeremy Babel** – Leyden High School District 212
- **Taylor Bauer** – Student Teacher, University of Illinois Springfield
- **Stephanie Bernoteit** – Illinois Board of Higher Education
- **Christy Borders** – Illinois State University
- **John Burkey** – Large Unit District Association
- **Siobhan Cafferty** – Loyola University Chicago
- **Tim Duggan** – Northeastern Illinois University
- **Kiah Duncan** – Harvey School District 152
- **Keisa Garrett** – Principal, Mason Clark Middle School, East St. Louis District 189
- **Herschel A. Hannah, Jr.** – Bloomington Public School District 87
- **Tammy Knippenberg** – Lexington High School District 7
- **Kristin Kramer** – Illinois PTA
- **Nancy Latham** – University of Illinois Urbana-Champaign
- **Matt Lyons** – Chicago Public Schools
- **Christian Mahone** – Springfield District 186
- **Rob Muller** – National Louis University
- **Barbara O'Donnell** – Southern Illinois University Edwardsville
- **Diane Rutledge** – Large Unit District Association
- **Mindy Sjoblom** – Relay Graduate School of Education
- **Jennifer Smith** – Monticello School District 25
- **Sara Stoelinga** – University of Chicago
- **Steve Tozer** – University of Illinois at Chicago
- **Brad White** – Illinois Education Research Council, Southern Illinois University Edwardsville
- **Robert Wilhite** – Concordia University

ABOUT THE PARTNERSHIP FOR EDUCATOR PREPARATION

The Illinois State Board of Education's (ISBE) goal is to ensure every student in the state is supported by highly effective teachers. ISBE, in conjunction with the Partnership for Educator Preparation (PEP) Steering Committee, has embarked on a significant program to strengthen data collection, sharing and reporting to continuously improve educator preparation programs and better serve our students.

For more information, please contact:

Cristina Dimmitt-Salinas, Division Supervisor of Educator Effectiveness, Illinois State Board of Education: cdimmitt@isbe.net
www.isbe.net/Pages/Partnership-for-Educator-Preparation.aspx



**Illinois
State Board of
Education**