



PWR POSTSECONDARY & WORKFORCE READINESS ACT

News on Implementing the PWR Act

From EdSystems | NIU Center for P-20 Engagement | Advance Illinois

December 3, 2018

Dear Colleagues,

As a way to keep all stakeholders informed and engaged on the PWR Act, Advance Illinois, Education Systems Center at NIU (EdSystems), and the NIU Center for P-20 Engagement have developed this quarterly PWR newsletter. Each newsletter will contain updates on the four key strategies that are part of the PWR Act as well as stories from communities as they implement these strategies.

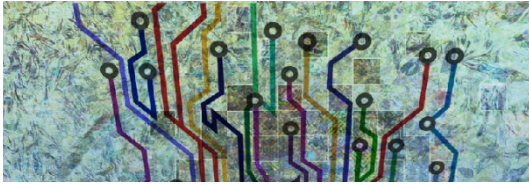
What is the PWR Act? Unanimously passed by the Illinois House and Senate in 2016, the Postsecondary and Workforce Readiness Act applies a student-centered and competency-based approach to support Illinois students in preparing for postsecondary education and future careers.

The Act identified four strategies that require coordinated community systems involving school districts, postsecondary education institutions, employers, and other public and private organizations. Check out important updates on these four strategies within this newsletter.

In partnership,

EdSystems, NIU Center for P-20 Engagement, Advance Illinois

POSTSECONDARY & CAREER EXPECTATIONS (PaCE)



Postsecondary and Career Expectations Framework

In 2016, the Illinois Postsecondary and Career Expectations (PaCE) Framework was adopted by the four educational agencies in Illinois: Illinois Student Assistance Commission (ISAC), Illinois Community College Board (ICCB), Illinois Board of Higher Education (IBHE), and Illinois State Board of Education (ISBE). Part of ISAC's role is to support schools in understanding and implementing the Illinois PaCE Framework or in developing a customized framework to fit their needs. With either of these options, it is essential that schools designate a PaCE Implementation Leader that will support the implementation process at their school.

We are pleased to announce the launch of the PaCE Implementation Leader Training (PILT). [Read More](#)

For more information on ISAC's PaCE Training Options, [Read More!](#)



COMPETENCY-BASED LEARNING SYSTEMS



Competency-based Graduation Requirements Pilot

Seeking Competency Pilot Applications

The Illinois State Board of Education has been at work to launch, support, and sustain the efforts of the Competency-based Graduation Requirements Pilot. On Oct. 11, ISBE released a [Request for Applications \(RFA\)](#) for the Competency-Based High School Graduation Requirements Pilot Program. Public school districts may participate in the pilot program for some or all of its schools. School districts may collaboratively apply to participate in the pilot program.

All Districts interested in applying may access the [application](#), as well as a library of research and resources, on ISBE's [Competency Pilot webpage](#). Applications are due to ISBE by **Dec. 7, 2018**. [Read More!](#)

For more information on this [RFA](#), please contact competencypilot@isbe.net.



TRANSITIONAL MATH COURSES



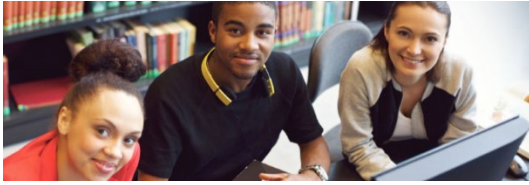
Transitional Math Implementation

Great things have been happening this fall throughout the state between high schools and colleges in transitional math. [Read more.](#)

Reach out to Kathy Almy kalmy@niu.edu if you would like your partnership highlighted in the next PWR newsletter!



COLLEGE AND CAREER PATHWAY ENDORSEMENTS



College and Career Pathway Endorsements

EdSystems has released the last two entries of a four-part blog series on the College and Career Pathway Endorsements. These blog entries focus on how the Illinois 60 by 25 Network is [supporting local communities in their Endorsement implementation efforts](#) and how competency mapping at the State level has [helped anchor local priorities](#) around student achievement.

Release of the Illinois Career Pathways Dictionary!

[Illinois Career Pathways Dictionary](#) supports these efforts. With so many opportunities on the horizon in Illinois—from forging better connections between programs in career pathways and employers to building out apprenticeships and other work-based learning models—Illinois agencies, advocates, and providers need to work with the same understanding of the terms surrounding workforce and education. For that reason, Illinois approved a statewide definition of Career Pathways this year. Through efforts by 14 statewide partners, this definition was a launching pad for developing a larger group of education and workforce development definitions, all included in the new Career Pathways Dictionary.

The Illinois Career Pathways Dictionary includes terms that fit the following criteria: 1) They pertain to—or deeply impact—multiple programs across state agencies; and 2) they apply to programming with funding from multiple federal agencies (e.g., programs funded by the federal Workforce Innovation and Opportunity Act). Many terms outlined in the PWR Act are included in this new resource. This dictionary will be updated as needed and new terms will be added, should they meet these criteria. The Illinois Career Pathways Dictionary can be found [here](#).





NORTHERN ILLINOIS UNIVERSITY
Center for P-20
Engagement

Advance
ILLINOIS | 10
YEARS

Our mailing address is:

EdSystems | NIU Center for P-20 Engagement |
Advance Illinois
105 W. Madison
Suite 1700
Chicago, IL 60602

[Add us to your address book](#)

*Copyright © 2018 EdSystems | NIU Center for P-20
Engagement | Advance Illinois, All rights reserved.
You are on this list if you participated in any meeting
or event related to the Illinois Postsecondary and
Workforce Readiness Act.*