



ESSA Site-Based Expenditure Reporting (SBER)

Report Card Visualizations
Summer 2019



Goals

- Share vision for Report Card Site-Based Expenditure Reporting visualizations
- Introduce draft visualizations through which LEA data will be publicly accessible
- Demonstrate how optional narratives can be beneficial to communicating data
- Reminder of upcoming milestones



ESSA Site-Based Expenditure Reporting must be implemented for SY2018-19

ESSA requires that State Education Agencies report on their state Report Card:

“The per-pupil expenditures of Federal, State, and local funds, including actual personnel expenditures and actual non-personnel expenditures of Federal, State, and local funds, disaggregated by source of funds, for each local educational agency and each school in the State for the preceding fiscal year.”



Site-Based Expenditure Reporting Value Proposition

developed in partnership with an Advisory Group comprised of district leaders and business officials, advocacy organizations, and other stakeholders

- **Resource allocation will be more readily accessible to schools and stakeholders**
- **Empowers LEAs and communities to assess and improve equity**
- **Enables LEAs and communities to gain a better understanding of the relationship between student outcomes and financial resources**
- **Enables LEAs, schools, and the state to identify evidence-based best practices and opportunities to foster innovation between peers**



Data collected through the data table feed Report Card visualizations

		Site-Level Per-Pupil Expenditures			District Centralized Per-Pupil Expenditures			Total Per-Pupil Expenditures				
Sites	Enrollment	State and			State and			State and			Exclusions	Total Expenditures
		Federal	Local	Subtotal	Federal	Local	Subtotal	Federal	Local	Total		
PK Ctr	50	\$500	\$8,020	\$8,520	\$660	\$3,514	\$4,175	\$1,160	\$11,534	\$12,695		
ES1	300	\$344	\$5,148	\$5,493	\$529	\$2,781	\$3,310	\$874	\$7,929	\$8,803		
ES2	250	\$231	\$5,445	\$5,677	\$457	\$3,095	\$3,552	\$688	\$8,540	\$9,229		
MS1	250	\$320	\$5,356	\$5,676	\$361	\$3,499	\$3,861	\$681	\$8,855	\$9,536		
HS1	320	\$458	\$6,910	\$7,368	\$371	\$2,919	\$3,290	\$829	\$9,829	\$10,658		
LEA	1,170	\$353	\$5,861	\$6,213	\$440	\$3,071	\$3,511	\$793	\$8,931	\$9,724	\$2,330,361	\$13,707,753

C

A / C

B / C

(A+B)/ C

D

This level of reporting detail will be the only mandated collection for Year 1. Visualizations are limited to these data and contextual data. LEAs may also optionally submit narratives and notation of allocation methodologies.



Report Card visualizations aim to assist users in realizing the Value Proposition

Data visualization provides ***target audiences*** with the data they need to investigate ***their critical questions*** toward ***realizing the value proposition***

Target Audiences: ***district leaders, principals, teachers, parents & families, and community members***

Note that the following visualizations represent the intended October 2019 Report Card visualizations. Any future changes will be made in consultation with the Advisory Group.



Preview of Report Card Visualizations

Site-Based Expenditure Reporting data will appear on all Illinois Report Card publications:

Interactive Report Card

- Highly visible; most robust visualizations

At-a-Glance

- Simplified report card, with most critical information only for a quick “glance”

PDF Report Card

- Report card used for compliance purposes



Interactive Report Card

Site-Based Expenditure Reporting data will be on the following pages:

- **District Report Card - School Finances section:** Multiple visualizations of data, including bar chart and scatterplot
- **School Report Card - School Finances section:** Multiple visualizations of data, including bar chart and scatterplot
- **District and School landing pages:** New tile on each landing page, hyperlinking to School Finances section of District and School Report Cards (respectively)
- **Advanced Compare Feature:** Site-Based Expenditure Reporting is available as a search criteria; data appear in a separate output tab based on search criteria



Sample Data Visualization District Report Card – School Finances, View 1

Bar chart of all site-level expenditures of district schools

- Including ability to disaggregate by state/local vs federal funding OR central vs school-level expenditures

with **data listing** below chart:

- Site-level enrollment
- Site-level student needs data
- Site-level summative designation

Total exclusions and total expenditures for the district will also be visualized

DISTRICT CUSD 1

[View At-a-Glance PDF](#)

District Snapshot
Academic Progress
District Environment
SEawards Survey
District Finances
School Finances
Average Class Size
Total School Days
Health and Wellness
Students
Teachers
Administrators
Schools in District
Retired Tests

School Finances

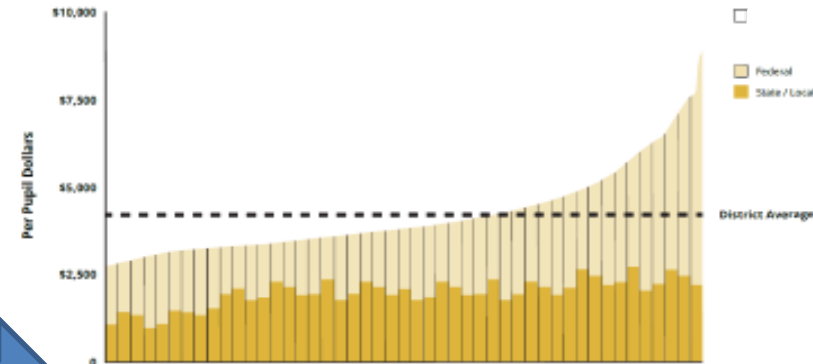
Lorem ipsum dolor, sit amet consectetur adipiscing elit sed do eiusmod.

District Financial Capacity to Meet Expectations = **153%**

For Evid

SELECT ☒ STATE/LOCALLY-FUNDED VS. FEDERALLY ☐ CENTRAL VS. SCHOOL-LEVEL

[View Bar Chart](#) | [View Scatterplot](#)



District-developed,
district-level
narrative goes
here if provided

SUMMATIVE DESIGNATION KEY

Lowest Performing = LP Underperforming = UP Commendable = COM Exemplary = EX

School Name	Per Pupil Expenditure	Enrollment	Low Income	English Learners	Students with IEPs	Summative Designation
SCHOOL 1	\$X,XXX	XX	XX%	XX%	XX%	LP
SCHOOL 2	\$X,XXX	XX	XX%	XX%	XX%	EX
SCHOOL 3	\$X,XXX	XX	XX%	XX%	XX%	COM
SCHOOL 4	\$X,XXX	XX	XX%	XX%	XX%	LP
SCHOOL 5	\$X,XXX	XX	XX%	XX%	XX%	COM
SCHOOL 6	\$X,XXX	XX	XX%	XX%	XX%	EX
SCHOOL 7	\$X,XXX	XX	XX%	XX%	XX%	LP
SCHOOL 8	\$X,XXX	XX	XX%	XX%	XX%	UP
SCHOOL 9	\$X,XXX	XX	XX%	XX%	XX%	COM

Included at page bottom:

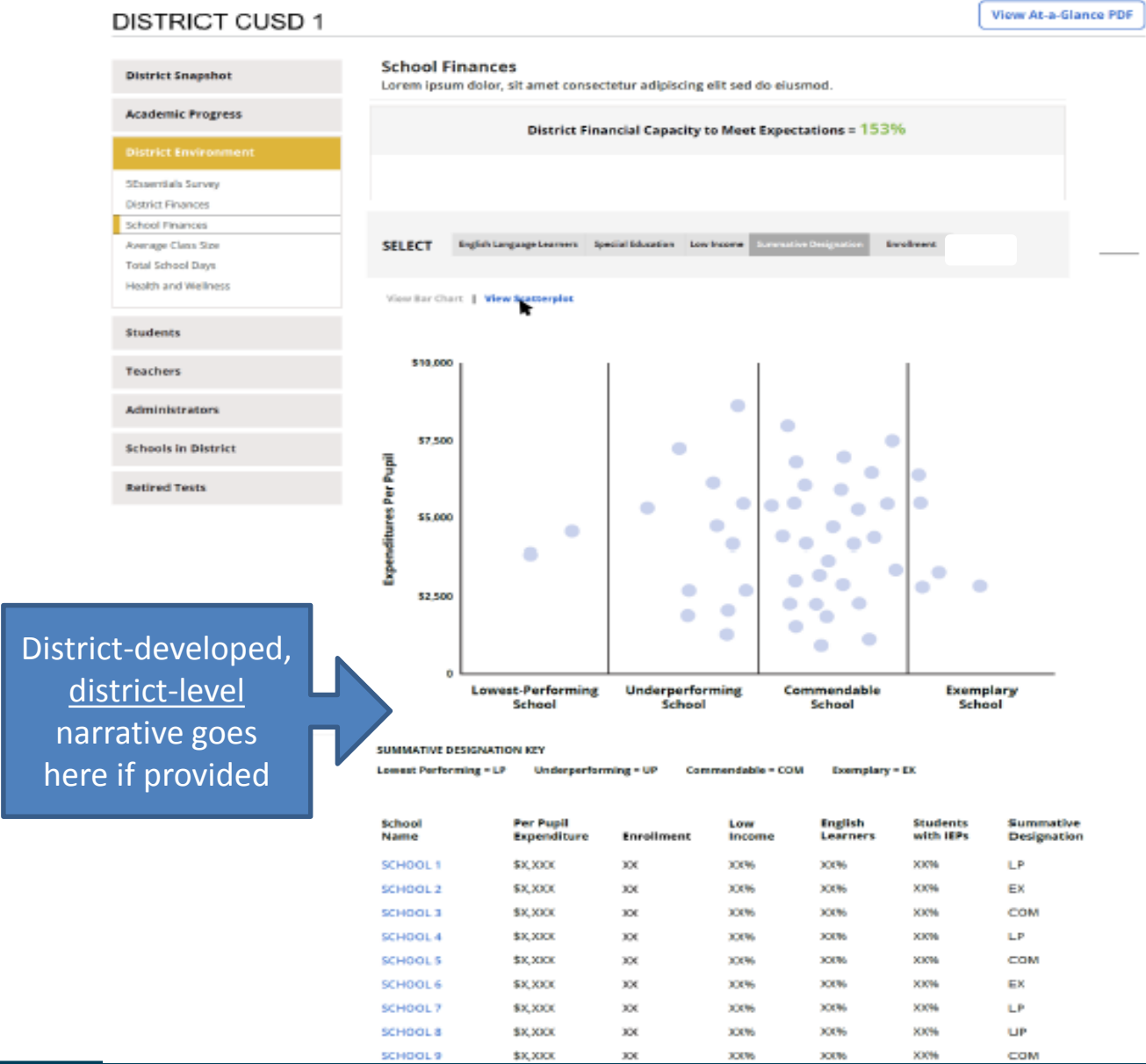
- District total exclusions
- District total expenditures
- Explanation of Display



Sample Data Visualization:
District Report Card –
School Finances, View 2

Scatterplot with ability to
select one axis data (low-
income, English Learner,
special education,
summative designation,
enrollment) and show in
comparison to per-pupil
expenditures.

Data listing remains on
page.





Sample Data Visualization: School Report Card – School Finances, View 1

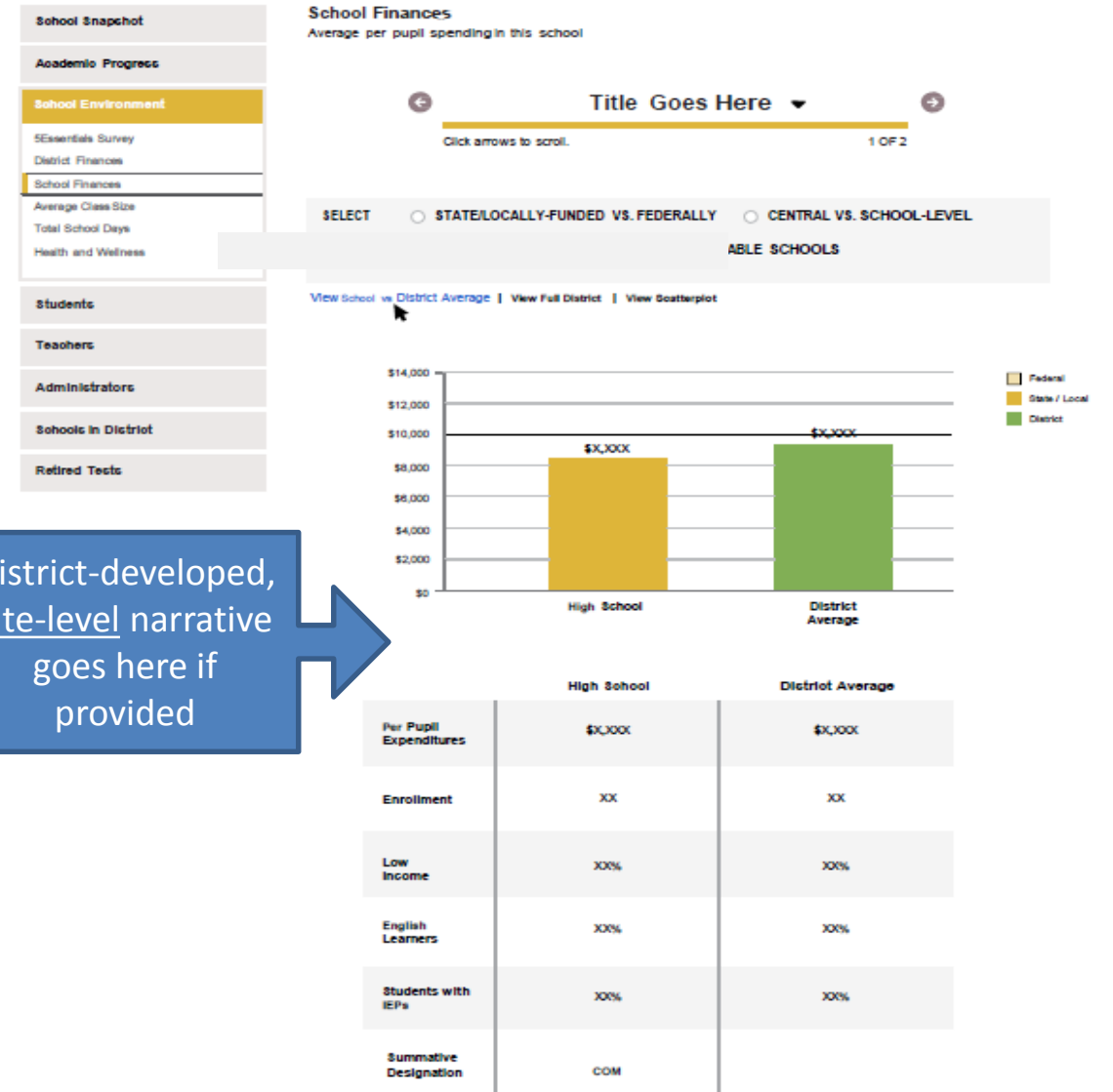
Bar chart of school's site-level expenditure data compared to district average

- Including ability to disaggregate by state/local vs federal funding OR central vs school-level expenditures

with **data table** below chart comparing school to district average:

- Site-level enrollment
- Site-level student needs data
- Site-level summative designation

HIGH SCHOOL (9 - 12)

[View At-a-Glance PDF](#)



Sample Data Visualization: School Report Card – School Finances, View 2

Bar chart of all site-level expenditures of district schools

- School is highlighted in bar chart
- Including ability to disaggregate by state/local vs federal funding OR central vs school-level expenditures

Data table below chart comparing school to district average:

- Site-level enrollment
- Site-level student needs data
- Site-level summative designation

HIGH SCHOOL (9 - 12)

[View At-a-Glance PDF](#)

School Snapshot

Academic Progress

School Environment

[Essentials Survey](#)[District Finances](#)[School Finances](#)[Average Class Size](#)[Total School Days](#)[Health and Wellness](#)

Students

Teachers

Administrators

Schools in District

Retired Tests

School Finances

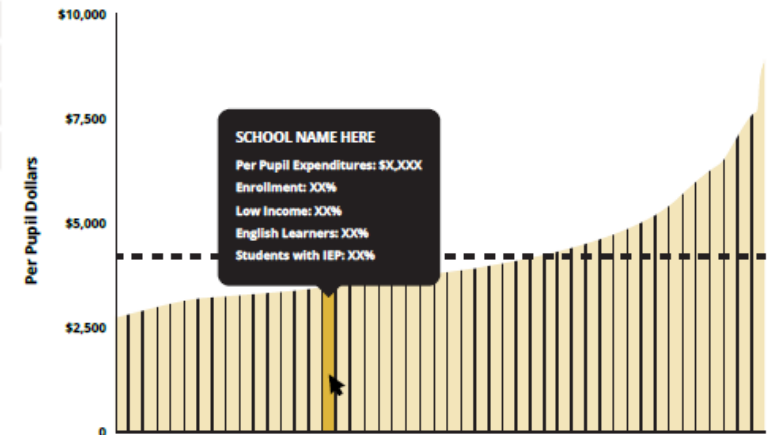
Average per pupil spending in this school



SELECT ☐ STATE/LOCALLY-FUNDED VS. FEDERALLY ☐ CENTRAL VS. SCHOOL-LEVEL

☐ COMPARE TO DISTRICT-SELECTED COMPARABLE SCHOOLS

View School vs District Average | [View Full District](#) | [View Scatterplot](#)



	High School	District Average
Per Pupil Expenditures	\$X,XXX	\$X,XXX
Enrollment	XX	XX
Low Income	XX%	XX%
English Learners	XX%	XX%
Students with IEP	XX%	XX%
Summative Designation	COM	



Sample Data Visualization: School Report Card – School Finances, View 3

Scatterplot with ability to select one axis data (low-income, English Learner, special education, summative designation, enrollment) and show in comparison to per pupil expenditures.

Data table remains on page.

School Snapshot

Academic Progress

School Environment

5Essentials Survey

District Finances

School Finances

Average Class Size

Total School Days

Health and Wellness

Students

Teachers

Administrators

Schools in District

Retired Tests

View At-a-Glance PDF

School Finances

Average per pupil spending in this school

Title Goes Here

Click arrows to scroll. 1 OF 2

SELECT English Language Learners Special Education Low Income Summative Designation Enrollment

View School vs District Average | View Full District | View Scatterplot

	High School	District Average
Per Pupil Expenditures	\$X,XXX	\$X,XXX
Enrollment	XX	XX
Low Income	XX%	XX%
English Learners	XX%	XX%
Students with IEP	XX%	XX%
Summative Designation	COM	



Interactive Report Card – *Optional District-Provided Narratives*

Optional district-provided narratives will accompany site-based expenditure data on the aforementioned district and school report card visualizations.

These narratives are collected alongside site-based expenditure data through the IWAS Site-Based Expenditure Reporting System. Prompts are included to help districts develop narratives.

Use of the narrative option enhances your district's ability to ***tell its story*** and assist viewers in ***making meaning of the data***.



Interactive Report Card – *Informing District-Provided Narratives*

ISBE recommends that districts entering their per-pupil spending data into the IWAS application for Site-Based Expenditure Reporting take a moment to ***view final per-pupil amounts in bar chart form*** before submission to ISBE. A quick conversion of the raw data into bar chart form enables districts to visualize what per-pupil spending looks like across the district, in order to adjust numbers that may be incorrect and to inform narratives.

The ISBE Site-Based/Report Card team is also working to build functionality into the IWAS application for Site-Based Expenditure Reporting such that users can see their entered data in bar chart form automatically. *Districts will be notified as this functionality becomes available.*



When scripting your optional narrative for your *district*, consider the following guiding questions to help you “tell your story”:

- What are you looking for in the data?
- What will principals, teachers, parents, and community members look for in the data?
- What questions are you interested in asking, now that you have these data?
- What relationship (if any) do you see between spending and outcomes for students?
- What are the major drivers of differences in spending levels between individual schools?
- How do these data help you understand your district and tell your story?
- How does your district and community talk about equity, equity of opportunity, spending smart, tradeoffs, and/or return on investment?
- What initial takeaways or action step ideas do you have from the data?



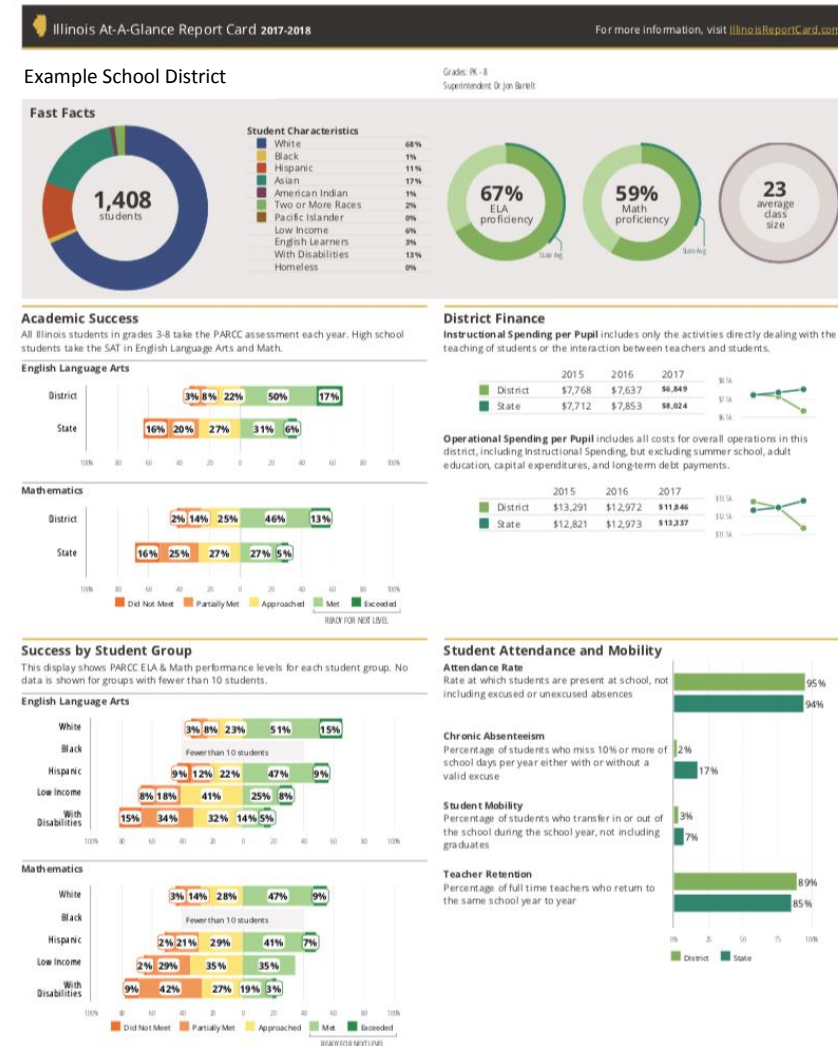
When scripting your optional narrative for your *school*, consider the following guiding questions to help you “tell your story”:

- What are you looking for in the data?
- What will principals, teachers, parents, and community members look for in the data?
- What is notable about this site, especially in terms of what may affect spending?
Example factors:
 - Student demographics
 - Special programs hosted at the site (e.g., magnet programs, early childhood)
 - Teacher years of experience/salary or other collective bargaining context
- Why may this school’s spending differ from other schools in the district?
- What relationship (if any) do you see between spending and outcomes for students?



“At-a-Glance” Report Card

- The At-a-Glance appears on the Interactive Report Card as a condensed (two pages), static, and highly visual representation (*see district-level example at right*). There is an At-a-Glance for each district and for each school.
- For the Report Card released in October 2019, site-based expenditure reporting will be included for the school-level At-a-Glance, but *not included* for the *district-level*.





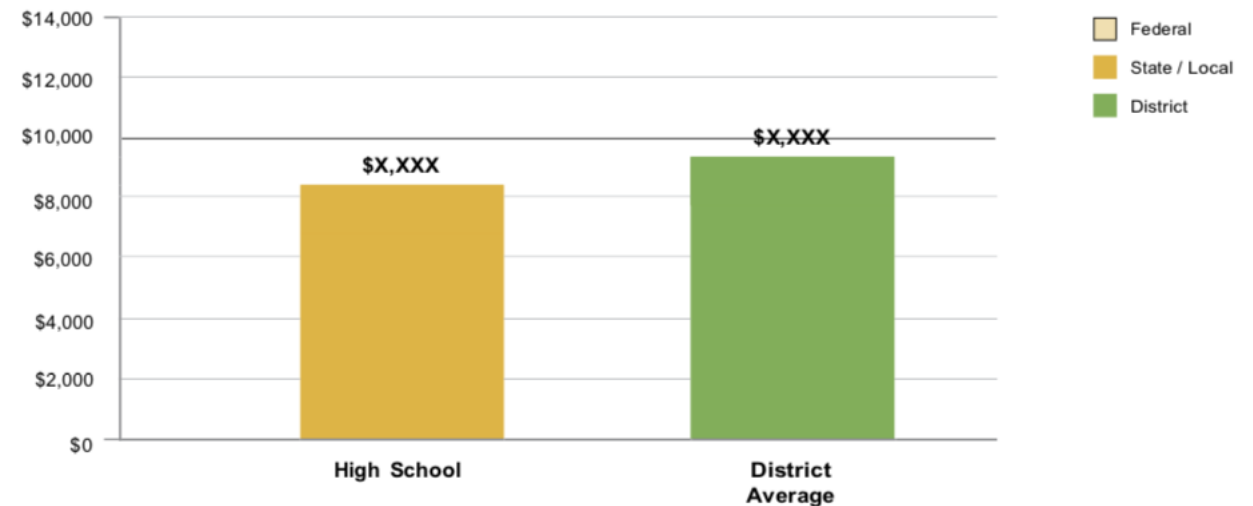
Sample Data Visualization: “At-a-Glance” School-Level Report Card – School-Level Finance

District finance data is currently included on the School At-a-Glance on the second page. This section includes average district and state instructional and operational spending. It is identical to the current District At-a-Glance (see previous slide).

For the October 2019 Report Card, ISBE will **remove** the existing district finance data from the School versions of the At-a-Glance Report Card and replace with basic Site-Based Expenditure Reporting data.

School-Level Finance

The Every Student Succeeds Act requires LEAs to report school-level expenditure data, beginning with School Year 18-19 data. LEAs are required to report actual personnel and non-personnel expenditures of both site-specific and district centralized expenditures. Expenditures are shown at the site level and must be disaggregated by source of funds (federal vs. state/local). These data are self-reported and may differ from AFR data.





PDF Report Card

- The PDF Report Card is lengthy, data-rich, and static
- This version is used to meet all legal and statutory reporting requirements
- Site-based expenditure reporting will be included for both district and school-level PDF report cards

19-022-0130-02-0000

Bloomingdale SD 13
Bloomington, ILLINOIS 60108

Jon Bartelt
Email - jbartelt@sd13.org
(630) 671-5035

Bloomingdale SD 13 Page 1 of 22

2018

ILLINOIS
SCHOOL
REPORT
CARD

EBF District Funding Tier - 4
Financial capacity to meet expectations - 113.5 %
State Senate District - 23
State Representative District - 045

State and federal laws require public school districts to release report cards to the public each year.

This year, the Illinois State Board of Education has updated the report card to provide a full picture of school performance beyond just test scores. A display of this data designed with parents and communities in mind is available on illinoisreportcard.com. All of the metrics posted on illinoisreportcard.com are also included in this report.

STUDENTS

STUDENT ENROLLMENT

	All	White	Black	Hispanic	Asian	Native Hawaiian /Pacific Islander	American Indian	Two or More Races	Students With IEPs	English Learners	Low Income	Homeless
District	1,408	961	10	158	240	*	*	32	186	36	78	*
		68.3%	0.7%	11.2%	17.0%	*	*	2.3%	13.2%	2.6%	5.5%	*
State	2,001,529	961,211	336,956	523,950	101,548	2,091	5,591	70,182	289,903	233,348	988,686	39,266
		48.0%	16.8%	26.2%	5.1%	0.1%	0.3%	3.5%	14.5%	11.7%	49.4%	2.0%

Student Enrollment is based on [Serving School](#).

Students With IEPs are those eligible to receive special education services.

English Learners are students eligible for transitional bilingual programs.

Low Income are students who receive or live in households that receive SNAP or TANF; are classified as homeless, migrant, runaway, Head Start, or foster children; or live in a household where the household income meets the USDA income guidelines to receive free or reduced-price meals.

Homeless students are those who do not have permanent and adequate homes.

CHRONIC ABSENTEEISM RATE

	All	White	Black	Hispanic	Asian	Native Hawaiian /Pacific Islander	American Indian	Two or More Races	Students With IEPs	English Learners	Low Income
District	1.5%	1.8%	*	2.1%	0.0%	*	*	3.3%	5.1%	0.0%	12.9%
State	16.8%	13.2%	27.4%	17.6%	8.5%	14.4%	33.1%	18.2%	25.2%	14.6%	23.3%

STUDENT MOBILITY RATE

	All	Male	Female	White	Black	Hispanic	Asian	Native Hawaiian /Pacific Islander	American Indian	Two or More Races	Students With IEPs	English Learners	Low Income
District	2.9%	2.4%	3.5%	1.3%	*	8.1%	5.7%	*	*	2.9%	6.9%	6.1%	12.8%
State	6.9%	7.3%	6.4%	4.6%	13.5%	6.7%	6.4%	9.2%	10.8%	8.0%	10.1%	9.3%	10.0%



Sample Data Visualization: PDF Report Card – District Level

- ISBE will include a new section on the district-level PDF report card to include site-based expenditure reporting
- This section will be inserted after the current School District Finances section (pg. 3)
- The new section will be titled “School-Level Finances” and will include the full reporting table from Data Collection
- A short context section is proposed to be included, as shown here:

School-level Finances

The Every Student Succeeds Act requires LEAs to report school-level expenditure data, beginning with School Year 18-19 data. LEAs are required to report actual personnel and non-personnel expenditures of both site-specific and district centralized expenditures. Expenditures are shown at the site level and must be disaggregated by source of funds (federal vs. state/local). These data are self-reported and may differ from AFR data.

Sites	Student Count	Site-Level Per-Pupil Expenditures			District Centralized Per-Pupil Expenditures			Total Per-Pupil Expenditures			<i>Total Exclusions Expenditures</i>	
		Federal	State and Local	Subtotal	Federal	State and Local	Subtotal	Federal	State and Local	Total		
PK Ctr	50	\$500	\$8,020	\$8,520	\$660	\$3,514	\$4,175	\$1,160	\$11,534	\$12,695		
ES1	300	\$344	\$5,148	\$5,493	\$529	\$2,781	\$3,310	\$874	\$7,929	\$8,803		
ES2	250	\$231	\$5,445	\$5,676	\$457	\$3,905	\$4,362	\$688	\$9,350	\$10,038		
MS1	250	\$320	\$5,356	\$5,676	\$361	\$3,499	\$3,861	\$681	\$8,855	\$9,536		
HS1	320	\$458	\$6,910	\$7,368	\$371	\$2,919	\$3,290	\$829	\$9,829	\$10,658		
LEA	1,170	\$353	\$5,860	\$6,213	\$440	\$3,244	\$3,684	\$793	\$9,104	\$9,897		
											\$2,330,361	\$13,910,071



Sample Data Visualization: PDF Report Card – School Level

- ISBE will include a new section on the school-level PDF report card to include site-based expenditure reporting
- This section will be inserted after the current School District Finances section (pg. 3)
- The new section will be titled “School-Level Finances” and will include two reporting table lines from Data Collection: one for the school and for one the total district
- A short context section is proposed to be included, as shown here:

School-level Finances

The Every Student Succeeds Act requires LEAs to report school-level expenditure data, beginning with School Year 18-19 data.

LEAs are required to report actual personnel and non-personnel expenditures of both site-specific and district centralized expenditures.

Expenditures are shown at the site level and must be disaggregated by source of funds (federal vs. state/local).

These data are self-reported and may differ from AFR data. Please refer to the District Report Card for district data for all schools.

Sites	Student Count	Site-Level Per-Pupil Expenditures			District Centralized Per-Pupil Expenditures			Total Per-Pupil Expenditures			<i>Total Exclusions Expenditures</i>	
		Federal	State and Local	Subtotal	Federal	State and Local	Subtotal	Federal	State and Local	Total		
ES1	300	\$344	\$5,148	\$5,493	\$529	\$2,781	\$3,310	\$874	\$7,929	\$8,803		
LEA	1,170	\$353	\$5,860	\$6,213	\$440	\$3,244	\$3,684	\$793	\$9,104	\$9,897	\$2,330,361	\$13,910,071



Upcoming Milestones

Milestone	Time Frame
<i>IWAS System for SBER pre-populated with FY 2019 sites and enrollments for LEA review</i>	<i>June 13, 2019</i>
<i>IWAS System for SBER opens for reporting</i>	<i>July 1, 2019</i>
All LEA submissions due in IWAS System	August 15, 2019
IWAS System for SBER still open for any submission edits as necessary	August 16-30, 2019
IWAS System for SBER closes	August 30, 2019
Educator Preview for Report Card opens	Early access: October 1, 2019 Standard access: October 15, 2019
Illinois Report Card (inclusive of Interactive Illinois Report Card, At-a-Glance, and PDF Report Card) published with SBER data	October 30, 2019



Further resources at www.isbe.net/site-based

Core Resources for All LEAs

- Site-Based Expenditure Reporting Guidance - Guidance 2.0, 04/23/2019
- Guidance 2.0 Release Letter to Districts, 04/23/2019
- Guidance Release Video for School Business Officials, 03/07/2018
- Guidance Release Webinar for District Leaders, 02/02/2018
 - Webinar Recording
 - Webinar Content Q & A *(Updated March 9, 2018)*
- Implementation Preparation Video for School Business Officials, 05/01/2018
- Suggested District Implementation Timeline, 04/17/2019
 - Suggested District Implementation Timeline, tab1 - PDF for easy printing
 - Suggested District Implementation Timeline, tab2 - PDF for easy printing

Supplementary Resources for All LEAs

- Federally-Funded Expenditures - Webinar for District Leaders, 07/02/2019
 - Federally-Funded Expenditures - Webinar Slides, 07/02/2019
- Centralized Expenditure Allocation Methodologies - Webinar for District Leaders, 06/11/2019
 - Centralized Expenditure Allocation Methodologies - Webinar Slides, 06/11/2019
- Students Educated Outside the District - Webinar for District Leaders, 05/14/2019
 - Students Educated Outside the District - Webinar Slides, 05/14/2019
- Excluded Expenditures - Webinar for District Leaders, 01/07/2019
 - Excluded Expenditures - Webinar Slides, 01/07/2019

Resources for Special Circumstances

- Overview for Commission-Authorized Charter Schools, 11/14/2018
- Overview Webinar for LEAs Authorizing Charter Schools, 05/14/2018

OFFICE HOURS to discuss Site-Based Expenditure Reporting with the ISBE team are available every **Thursday from 9:00 a.m. to 12:00 p.m.** in July and August. Other office hours options are available as well. To sign up for a 15-minute slot, visit <https://calendly.com/site-based>

Reviewed all the materials, still have questions, and office hours can't come soon enough? Email site-based@isbe.net