



School Nurse Bootcamp: School Health Office and the ancillary departments

Presented by ISBE's Wellness Team

August 2, 2021

Equity • Quality • Collaboration • Community



Presenters:

Rebecca Doran & Theresa Zumba
School Nurse Principal Consultants
Illinois State Board of Education
Chicago & Springfield Offices

Equity • Quality • Collaboration • Community



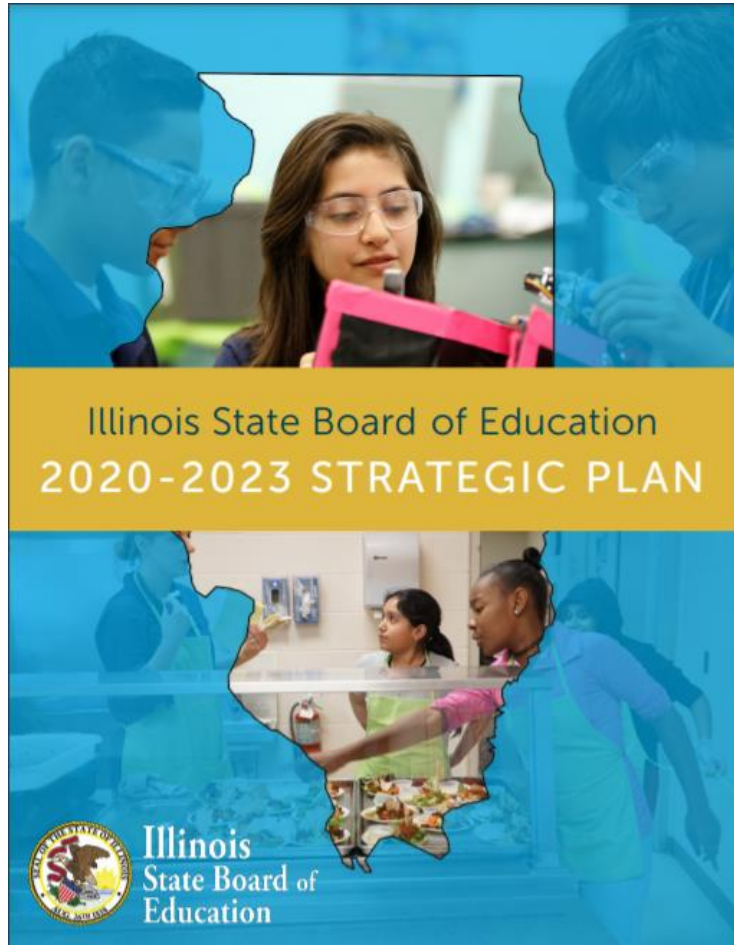
ISBE Vision & Mission

Vision:

Each and every child is equipped to make meaningful contributions to society and live life to its fullest potential.

Mission:

Provide each and every child with safe and healthy learning conditions, great educators, and equitable opportunities by practicing data-informed stewardship of resources and policy development, all done in partnership with educators, families, and stakeholders.



For more information, visit
www.isbe.net/strategicplan

ISBE Goals



- + **(Internal)** An equity impact analysis tool will guide all decisions and communications provided to the field.
- + **(External)** An Equity Journey Continuum will be used to publicly indicate where each Illinois school district is on its equity journey.



Every child will make significant academic gains each year, increasing their knowledge, skills, and opportunities so they graduate equipped to pursue a successful future, with the state paying special attention to addressing historic inequities.



All districts and schools will receive the resources necessary to create safe, healthy, and welcoming learning environments, and will be equipped to meet the unique academic and social and emotional needs of each and every student.



Illinois' diverse student population will have educators who are prepared through multiple pathways and are supported in and celebrated for their efforts to provide each and every child an education that meets their needs.



Questions

- Questions welcomed during the live presentation, enter them into the question box.
- A compiled FAQ document, Power Point, and webinar recording will be made available on ISBE's School Health Webpage.



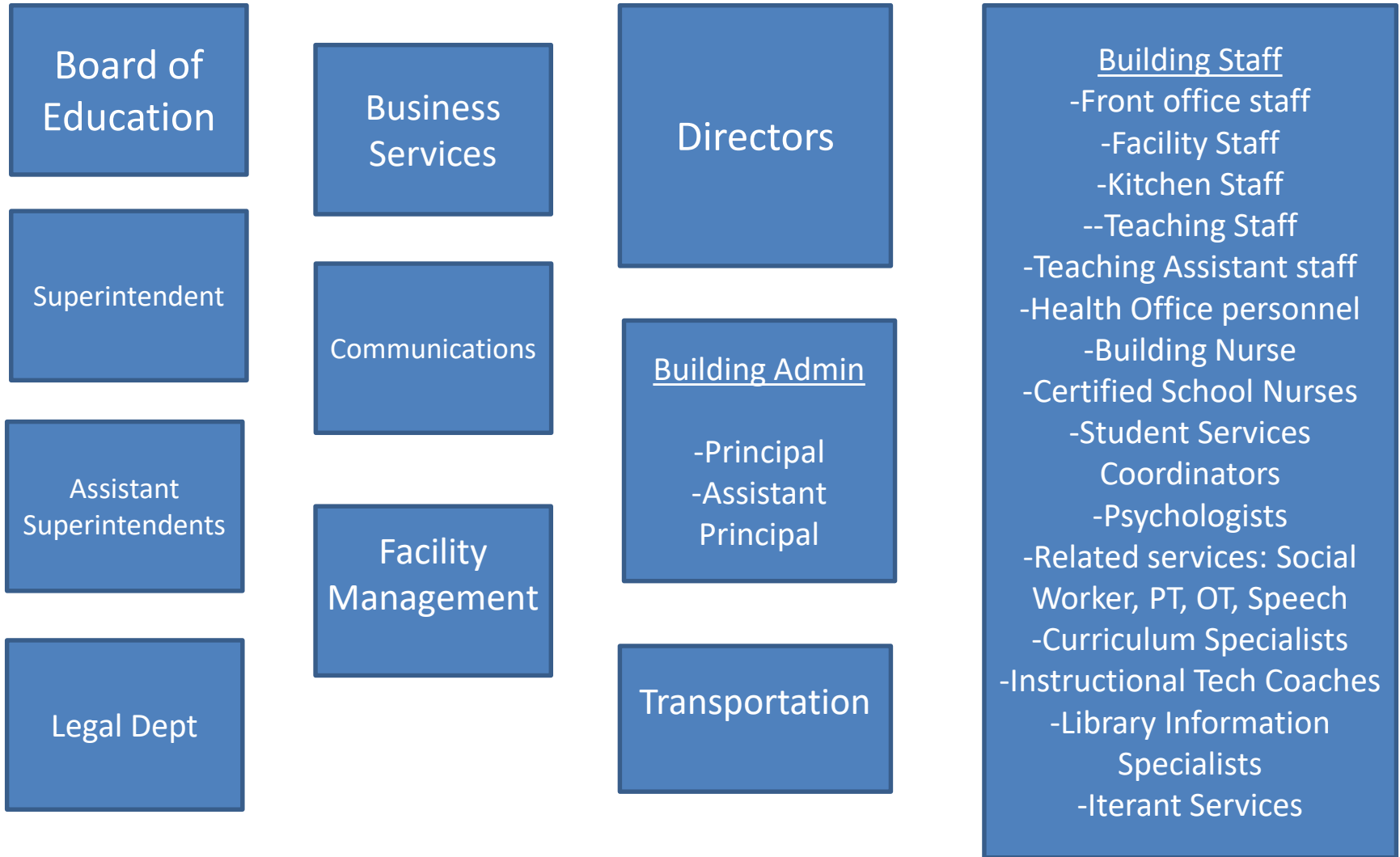
Purpose

Discuss supporting roles for student health in the school setting. This webinar will explore the various roles/departments a school nurse may interact with while supporting their students.

Equity • Quality • Collaboration • Community



Prototype Organizational Structure for School District





- Board of Education
- Superintendent
- Assistant Superintendents
- Human Resources
- Business Services
- Facility Management
- Building Administration
- Student Services/Related Services
 - Health Services
 - Student Services Coordinators
 - Psychologists
 - Social Work
 - Physical therapy
 - Occupational Therapy
 - Speech Pathology
 - Iterant Services



Health Services

- Advance disease prevention
- Health promotion
 - Whole district/ community
 - School
 - Students
 - Parents
 - Staff

Personnel may include:

- Health Aides
- LPN
- CNA
- One-on-One nurses
- RN
- BSN- RN
- PEL-CSN
- Health services facilitators

And more!



Student and Staff Privacy

- FERPA for students
 - Exceptions for serious and imminent threats to health and safety
 - Required release related to vaccine compliance
- HIPAA for staff:
 - Definition of HIPAA covered entity
 - Release of information related to outbreaks of communicable disease



Putting the Pieces Together

- Student Services Coordinators
- Psychologists
- Social Work
- Physical therapy
- Occupational Therapy
- Speech Pathology
- Iterant Services
- Teaching Staff
- Kitchen Staff
- Facility Staff
- Front office staff
- Teaching Assistant staff
- Transportation staff/company



For More Information on the Administrative Code

TITLE 23: EDUCATION AND CULTURAL RESOURCES

SUBTITLE A: EDUCATION

CHAPTER I: STATE BOARD OF EDUCATION

SUBCHAPTER a: PUBLIC SCHOOL RECOGNITION

PART 1 PUBLIC SCHOOLS EVALUATION, RECOGNITION AND SUPERVISION

SECTION 1.530 HEALTH SERVICES

Specifically as it relates to “...emergency procedure to be followed in cases of injury to or sudden illness of students and/or staff...”

Click on this hyperlink:

[Section 1 \(ilga.gov\)](#)



Thank you!

Questions? Contact

schoolnurse@isbe.net