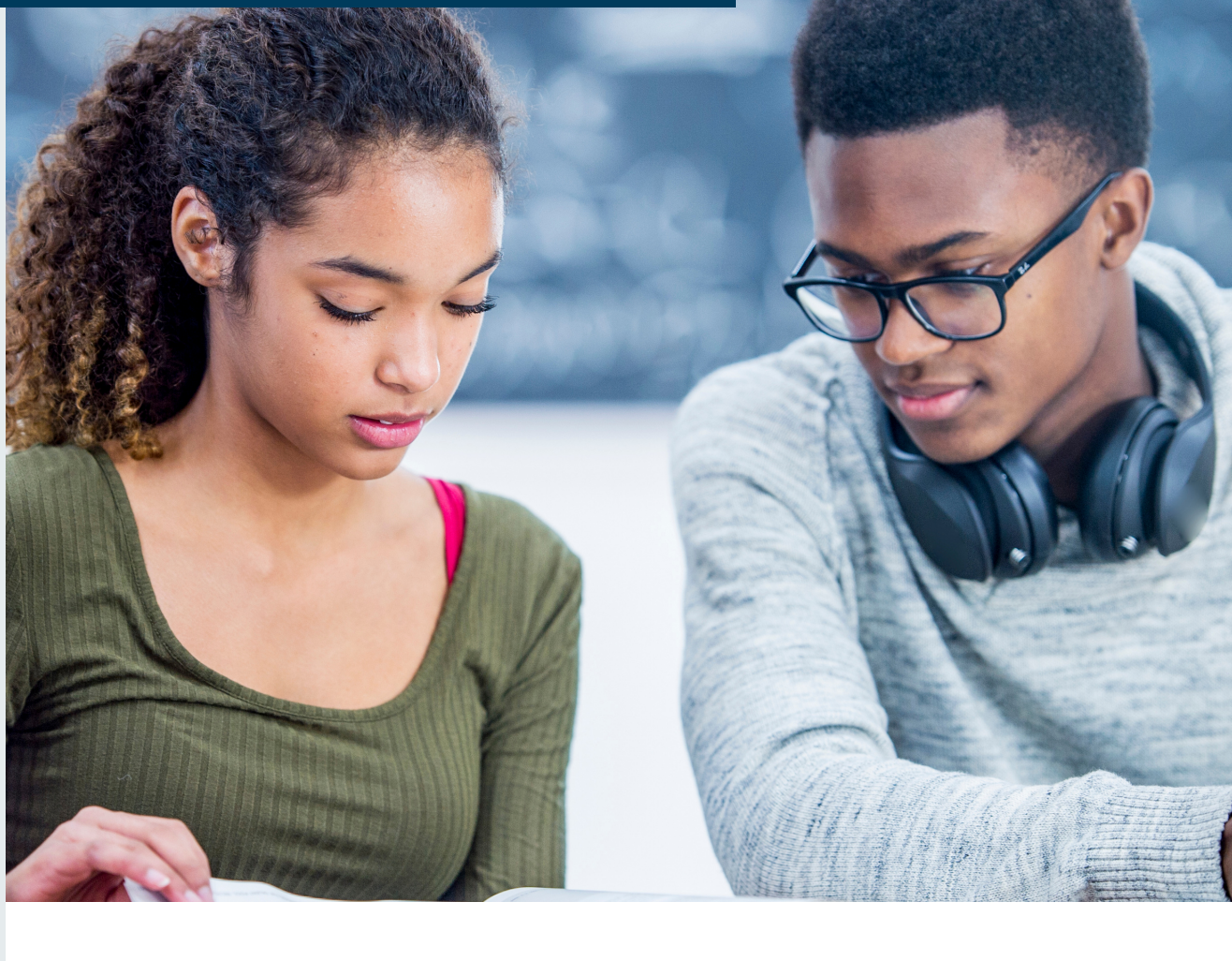


# READER'S GUIDE

## 2024 Illinois Comprehensive Literacy Plan



STUDENTS



# Reader's Guide: Students



This guide is designed as a companion to the Illinois Comprehensive Literacy Plan to support students in navigating through and benefiting from the implementation of evidence-based literacy practices. Specifically tailored for students, it highlights key strategies for literacy success, provides readings that are relevant to their learning journey, and includes workbook pages for their active participation. This resource aims at empowering students to take an active role in their literacy education and support an equitable learning environment for themselves and their peers.

## Guide Audience

Students are diverse learners spanning various grade levels, from elementary to high school. Tailored interventions, innovative teaching strategies, and targeted resources are essential to address the unique literacy needs of the dynamic student population, fostering comprehensive language skills and promoting a lifelong love for reading and writing.

## Overview of the Plan

The Illinois Comprehensive Literacy Plan establishes a guiding framework to enhance literacy instruction statewide. The plan targets all educational levels, emphasizing equity and inclusiveness while adhering to evidence-based practices. Central to the plan is the commitment to address and rectify persistent literacy disparities. It aims to unify efforts across various educational systems to ensure every student develops proficient literacy skills.

The plan focuses on three main goals:

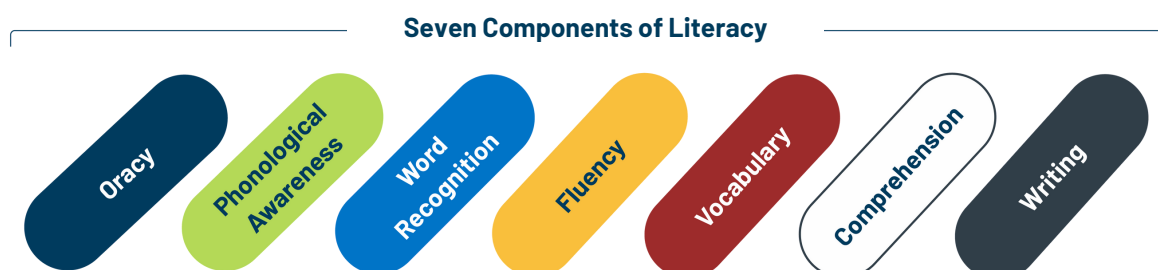
**GOAL 1:** Every **student** receives high-quality, evidence-based literacy instruction.

**GOAL 2:** Every **educator** is prepared and continuously supported to deliver high-quality, evidence-based literacy instruction.

**GOAL 3:** Every **leader** is equipped to create, maintain, and sustain equitable conditions for high-quality, evidence-based literacy instruction.

The Illinois Comprehensive Literacy Plan encourages local decision-making and adaptability, urging districts to customize their approaches based on specific needs and data within the local context. It's focus is on core, Tier 1 instruction, supplemented by discussions on interventions and differentiation strategies, targeting the literacy needs of Illinois students and working to close educational gaps.

The plan identifies Seven Components of Literacy at the core of every effective literacy program.



The plan contains six sections that guide readers through the careful consideration of creating and implementing a comprehensive literacy program that is systematically aligned.

The **Introduction** articulates the need based on data for a state literacy plan and outlines the vision, purpose, and objectives, serving as the foundational overview of the plan.

**Section 2: Educator Professional Learning and Development** details the continuous development and support of educators to ensure the delivery of high-quality literacy instruction, emphasizing educator preparation programs alignment with the plan.

**Section 4: Support and Implementation Considerations** highlights critical strategies for developing and implementing the literacy plan, through a workbook style format.



**Section 1: Framework for Effective Evidence-Based Literacy Instruction** establishes the core strategies for delivering impactful literacy instruction based on evidence-based practices, across the **Seven Components of Literacy**.

**Section 3: Effective Literacy Leadership** focuses on the role of leaders in driving high-quality, evidence-based literacy instruction, while advocating for collaboration, culturally responsive instruction, and data-informed decision-making.

**Section 5: Tools and Resources** provides a list of resources and tools to aid districts, teachers, and families in implementing the literacy plan.

## Engaging with the Plan

Below are general tips for engaging with the Illinois Comprehensive Literacy Plan:

- **Tailor Your Learning:** Identify your learning preferences and interests. Use this knowledge to seek out reading and writing activities that excite you and meet your individual needs.
- **Explore Technology:** Take advantage of educational apps and online resources to enhance your reading and writing skills. These tools can make learning more fun and interactive.
- **Discover the Joy of Reading:** Explore a variety of books, magazines, and online articles to find topics that intrigue you. Reading for pleasure can significantly boost your literacy development.
- **Participate in Literacy Activities:** Get involved in school or community literacy projects, such as writing clubs, reading challenges, or storytelling events.
- **Think Critically:** Practice analyzing and questioning the texts you read. Ask yourself about the author's intentions, the perspectives presented, and the underlying messages.
- **Write Across Subjects:** Try writing about different subjects you're learning in school. This can help reinforce your knowledge and improve your writing skills.
- **Seek Help When Needed:** If you're struggling with reading or writing, don't hesitate to ask for help. There are many people ready to support your literacy journey.
- **Learn from Peers:** Share your reading and writing experiences with friends. You can learn a lot from discussing books or peer reviewing each other's work.
- **Connect with Your Family:** Talk to your family members about what you're reading and writing in school. They can offer support, encouragement, and maybe even join in on the literacy fun.

# Sample Roadmap through the Plan

The Illinois Comprehensive Literacy Plan incorporates various stakeholder roles that exist in education that each uniquely support literacy. Understanding your role offers insights into effective implementation and collaboration for positive student outcomes. The plan is designed to support varied uses and can easily be read by section and in varying order.

Students are encouraged to interact with the literacy plan to enhance reading and writing skills. Take an active role by exploring the suggested resources, engage with recommended practices, and collaborate with educators to tailor strategies to individual learning styles. This plan is a guide to developing strong literacy foundations, critical thinking skills, and a lifelong love for learning.

One sample roadmap to the Plan specifically is:

## Introduction.....8-21

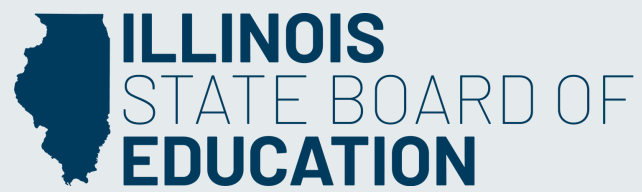
- **Why is This Plan Necessary?** on pages 10 and 11
  - Access the [Illinois School Report Card](#) to view your local state assessment data and compare to your personal scores.
- **Illinois’ Guiding Values for Literacy** on pages 12 and 13
  - Examine local literacy initiatives for evidence of these values.

## Section 1: Framework for Effective Evidence-Based Literacy Instruction.....22-102

- **Seven Components of Literacy** on pages 33 through 61
  - Familiarize yourself with these components and the aligned instructional practices and look for evidence of each within local curriculum.
- **Additional Instructional Factors** on pages 62 through 70
  - Consider how these topics apply to you as a student.

## Section 5: Tools and Resources.....174-192

- Explore the Tools and Resources to learn more about how literacy skills are developed.



[isbe.net/LiteracyPlan](https://isbe.net/LiteracyPlan)