



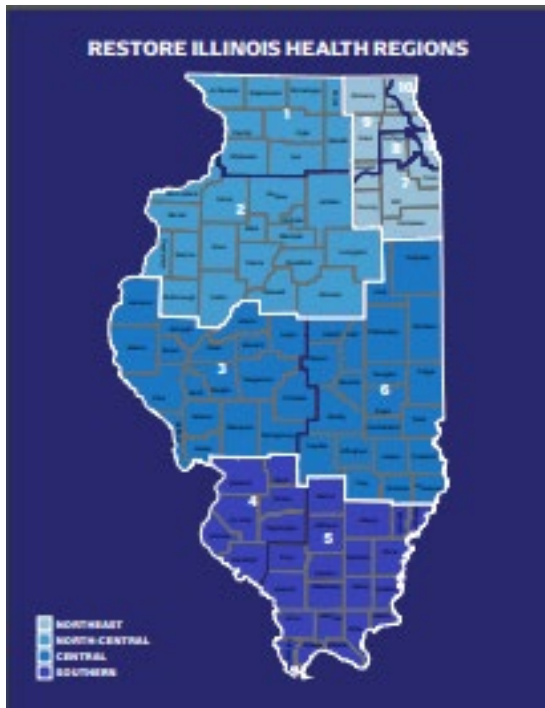
Transitioning to 2020-21 School Year: Plan Overview

June 2020

Equity • Quality • Collaboration • Community



Restore Illinois Plan



Released May 5, provides a public health approach to reopen Illinois. Schools and districts are encouraged to transition to in-person instruction as regions transition to Phase 4 when IDPH safety guidance is met.

Equity • Quality • Collaboration • Community



Transition Advisory Work Group

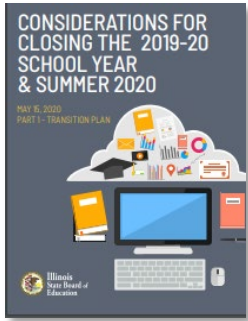
- 56 Total Members
 - Educators
 - Administrators
 - Transportation professionals
 - School nurses
 - Social workers
 - Agency staff
 - Governor's Office



Equity • Quality • Collaboration • Community

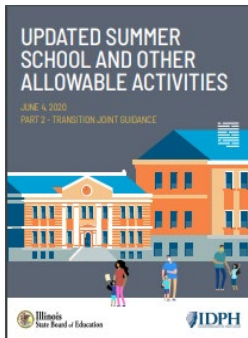


Transition Guidance



- **Part 1 – Considerations for Closing the 2019-20 School Year and Summer 2020** - Released May 15

- Focuses on closing out the 2019-20 SY in Phase 2 and preparations that can be made for instruction in the fall.



- **Part 2 – Updated Summer School and Other Allowable Activities** - Released June 4

- Focuses activities allowed in Phase 3 and by Executive Order 2020-40, including summer school, and provides health and safety guidelines for schools. ISBE highlighted to schools that most of the health and safety protocols would carry over into Phase 4 with capacity limits raising from 10 to 50.



- **Part 3 – Starting the 2020-21 School Year** - Released June 23

- Focuses on scheduling, instruction, and expanded health and safety guidelines for schools.

Equity • Quality • Collaboration • Community



IDPH Safety Guidelines

Schools and districts are encouraged to transition to in-person instruction as regions transition to Phase 4. **The following IDPH requirements must be met:**

- Require use of appropriate personal protective equipment (PPE), including face coverings;
- Prohibit more than 50 individuals from gathering in one space;
- Require social distancing be observed, as much as possible;
- Conduct symptom screenings and temperature checks or require self-certification that individuals entering school buildings are symptom free; and,
- Increase schoolwide cleaning and disinfection.

Requirements are subject to change pursuant to updated public health guidance and changing public health conditions.

Equity • Quality • Collaboration • Community



Part 3 Transition Guidance

District Planning

- Review Remote Learning Plans, create Remote and Blended Remote Learning Day Plans
- Create inclusive Planning Teams
- Ground plans in equity: prioritize in-person learning for students with IEPs, English Learners, and students under age 13
- Survey families and educators and review student attendance and engagement data
- Communication with staff and families



Part 3 Transition Guidance

Instructional Recommendations

- Assess and address skill levels (learning loss) and social-emotional needs
- Consider grade band transitions and vertical grade level articulation
- Provides recommendations for instructional practices to maintain social distance, especially for our youngest learners
- Return to traditional grading policies and make modifications as necessary
- Support educators through teacher mentoring, professional learning, and teacher leaders, including trauma-informed practices



Part 3 Transition Guidance

Health and Safety Protocols

- Further defines IDPH safety guidelines for schools
- Preparing for when someone becomes sick
- Illness and diagnoses monitoring
- Specific area and activity recommendations (e.g. gymnasiums, playgrounds, transportation, extracurriculars)

Equity • Quality • Collaboration • Community



Frequently Asked Questions – Face Coverings

- **Are all individuals in a school building required to wear a face covering at all times?**
 - Yes. As required by IDPH, except while eating and during band, face coverings must be worn at all times in school buildings, even when social distance is maintained. All individuals in a school building must wear a face coverings unless they have a medical contraindication, are under 2 years of age, have trouble breathing, or are unconscious, incapacitated, or unable to remove the face covering without assistance.
- **Are face coverings required when individuals are outside?**
 - Face coverings are not required outside if social distance is maintained.
- **How should schools and districts verify a student meets an exception to the face covering requirement?**
 - It is recommended that schools require physicians notes for students and staff who are not able to wear a face covering.
- **How should schools and districts handle individuals who refuse to wear face coverings?**
 - It is recommended that schools and districts update policies to require the wearing a face covering while in school buildings and handle violations in the same manner as other similar policy violations.
- **Can staff wear a face shield instead of a face covering?**
 - Yes. This would make sense particularly in situations where it is important for students to see words being formed (i.e. English Learners, early childhood, world language, etc.).
- **Will face coverings be provided by the State of Illinois to schools?**
 - The Emergency Management Agency is providing 2.5 million face coverings to Illinois public schools. A survey was sent to K-12 public school districts on Tuesday to coordinate delivery.



Part 3 Transition Guidance

Frequently Asked Questions – Social Distance & Capacity Limits

- **Are staff and students required to maintain social distance (remain 6 feet apart) at all times?**
 - Social distance must be observed as much as possible.
- **Is social distance required to be maintained on school busses?**
 - Districts are encouraged to survey parents to determine need for student transportation. No more than 50 students may be on a bus at one time and a face covering must be worn by all individuals on a bus, unless they meet a face covering exception.
- **Regarding capacity limits, what does ‘one space’ mean?**
 - Examples of one space may include one school bus, one classroom, one gymnasium, or areas of a hallway. Capacity restrictions do not apply to an entire school building.
- **What does ‘one space’ mean when outside?**
 - Each group of 50 or fewer individuals must remain 30 feet apart.



Part 3 Transition Guidance

Frequently Asked Questions – Remote Learning

- **Can parents opt-in to full remote instruction for students?**
 - This is a local decision. It is recommended that districts include a policy on this in their Remote and Blended Remote Learning Plan. Schools and districts should also consider planning for remote instruction for students who are medically fragile, at a higher risk of severe illness, or who live with individuals at higher risk of severe illness. Students receiving remote instruction count for attendance.
- **Is a school required to transition to remote instruction if an individual who was in the building tests positive for COVID-19?**
 - Only those individuals with close contact with someone who tested positive or who is suspected of having COVID-19 are required to self-quarantine for 14 days.



ISBE Next Steps



Equity • Quality • Collaboration • Community



NOTE: Requirements are subject to change pursuant to updated public health guidance and changing public health conditions.

Type questions into webinar portal.

Frequent questions will be compiled and included in an FAQ.

Please email covid19@isbe.net for any remaining unanswered questions after the FAQ is released.