

ISBE Student Assessment Update

Illinois State Board of Education
January 10, 2025



Agenda

- General Updates
- Entity Profile System (EPS)
- Illinois Science Assessment (ISA)
- Illinois Assessment of Readiness (IAR)
- Dynamic Learning Maps Alternate Assessment (DLM-AA)
- ACT with Writing, PreACT Secure, and PreACT 9 Secure
- ACCESS/ALT ACCESS
- Kindergarten Individual Developments Survey (KIDS)
- Upcoming Webinars
- Contact Information

General Updates

- To register for upcoming Assessment Update Webinars, open the blue "Presentations and Webinars" accordion on the [Communications webpage](#), and click on the "Registration" link.
- All Assessment Update Webinars are recorded and posted, along with the presentation slide deck, on the ["Presentations and Webinars Archive"](#) page.



ISBE's Entity Profile System (EPS)

- If a user does not have the Entity Profile System listed under System Listings, the below will be how to have the access granted:
 - To gain access to the Entity Profile System in IWAS:
 - Login to IWAS
 - Click on System Listings
 - Scroll down to “Want to Signup for other Systems?”
 - Scroll down to Reporting. This is where the system listing of Entity Profile System is located.
 - Click on “Sign Up Now”
 - Complete all the required fields
 - Click Submit.
- Information about ISBE's [Entity Profile System](#) is available on the ISBE website and includes the following resources:
 - Webinars
 - Guidance documents
 - Instructions for updating information in EPS

ISBE's Entity Profile System (EPS)

- ISBE's **Entity Profile System (EPS)** serves as the directory for Illinois schools and districts, and most IWAS systems use information from EPS for important notifications, updates, due dates, etc.
- Districts should identify the name and contact for each test coordinator currently listed in EPS.
***Note: Two new contact types have been added:
"District Test Coordinator" and "High School Test Coordinator."***
- The same person may be identified for multiple contact types, based on the work they perform in the school/district (e.g., the principal may be listed as the ISA Coordinator).
- It is also important to identify a "Director of Technology," as this contact will receive assessment technology alerts, including those for NAEP. Note that individuals under this contact type need not have this specific job title locally.
- Information about ISBE's [Entity Profile System](#) is available on the ISBE website and includes the following resources:
 - Webinars
 - Guidance documents
 - Instructions for updating information in EPS



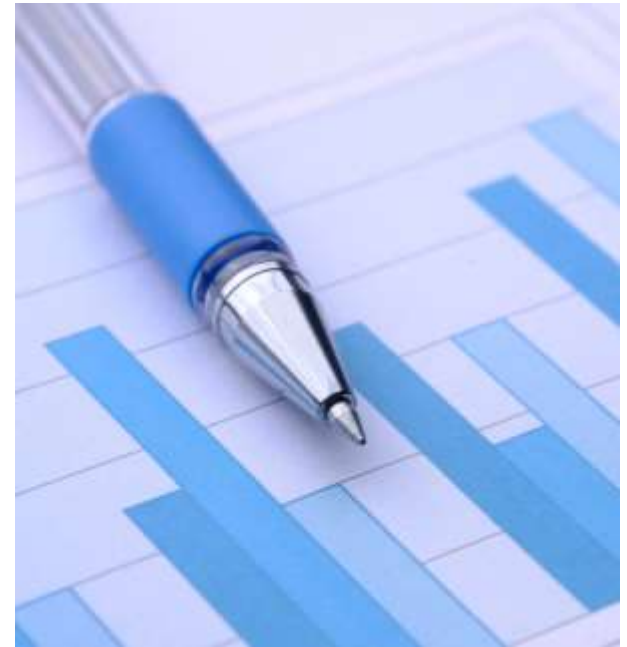
(ISA)

ISA Testing Information

- The Illinois State Board of Education has adopted the ACT to serve as the federally-required science accountability assessment for Grade 11, effective with the 2024-25 school year.
- Grades 5 & 8 will continue taking the ISA.
- ISA testing window:
March 3 – April 30, 2025.

Update Student Information in SIS

- Make sure to review your student enrollment and program indicator information in SIS including the IDEA, Alternate Assessment Indicator, and EL Status
- This will help to match your students in the Pre-ID file with the correct test, such as the DLM-AA or the ISA Spanish version.



2025 ISA Key Dates

Event	Date(s)
ISA Spring 2025 Testing Window – Paper Testing	3/03/25 – 4/30/25
ISA Spring 2025 Testing Window – Online Testing	3/03/25 – 4/30/25
Deadline for Districts/Schools to have student accommodation information loaded into IL Administration Platform for Pre-ID	1/22/25
Materials Due in District * ISA manuals	2/20/25
Science: Additional Order window for districts/schools (all paper testing materials)	2/20/25 – 4/25/25
Science: Additional Order window for districts/schools (computer materials)	2/20/25 – 4/25/25
Science: Additional Order window for districts/schools (return materials only)	2/20/25 – 5/7/25
Create Proctor Groups	3/3/25 – 4/30/25
Deadline to return paper-based testing scorable and nonscorable materials to Pearson	5/7/25
Deadline to return computer-based testing nonscorable materials to Pearson	5/7/25

ISA Test Management Platform Updates

- The ISA test management platform will be the same platform that is used for the IAR.
- Testing Coordinators will no longer need to add educators as test administrators.
- In the updated platform, test administrators will receive a code for testing.
- There is a training video for how to add users posted on the ISA support page:

[Training | IL Portal](#)

ISA Administration Resource Link

- Accommodation Resources
- Accessibility Features and Accommodations (AF&A) Resources
- Forms
- Illinois Learning Management System (LMS)
- Manuals
- Resource Materials
- Test Proctor Scripts and Resources
- Test Design
- Tools and Policies
- Training Modules

[ISA Summative Resources | IL Portal](#)

ISA Teacher Resource Link

- ISA Blueprint
- ISA information

[Teacher Resources | IL Portal](#)

ISA Practice Items Available

- Practice items and the Student Readiness Tool for the ISA can be found on the [Pearson support page](#).
- The SRT engages students in learning how to navigate the testing platform.
- [Link to Practice items and SRT](#)
- Additional practice test items will become available in the QulSBE platform when it opens in February. Testing entities listed in EPS will receive a welcome invitation to the QulSBE platform in February.

ISA Summative Resources

- Additional ISA resources including reporting information and Program Delivery Team office hours can be found on the Pearson ISA support page.
- [Link to Pearson ISA Support Page](#)

Contact Information

ISBE Website [Illinois Science Assessment](https://www.isbe.net/illinois-science-assessment)

John Hicks: ISA Coordinator

Email: assessment@isbe.net

Phone: 866-317-6034



ILLINOIS
Assessment of Readiness



ILLINOIS ASSESSMENT OF READINESS (IAR)

Illinois Assessment of Readiness

THE ILLINOIS ADMINISTRATION PLATFORM IS OPEN!

The **Illinois Administration Platform** is an upgraded administrative platform that has replaced the platform formerly known as PAN for the Illinois Assessment of Readiness (IAR) and Illinois Science Assessment (ISA).

Pearson sent out the initial invitations in November to superintendents, principals, IAR coordinators, and ISA coordinators listed in the ISBE Entity Profile System (EPS). District users are able to create other district users and building users, and building users are able to create other users within their buildings. A description of the log in process, the available roles, and the process for creating other users manually or via file upload is available here:

[Getting Started: How to Log In and Create Users video](#)

Only District Test Coordinators, School Test Coordinators, or Technology Coordinators will need to be added to the platform. Test Proctors will not need to be added as users. If you did not receive a welcome email from LaunchPad, please check your spam folder before contacting ISBE.



Illinois Assessment of Readiness

2025 IAR Training Dates

Training Title	Topics Discussed	Projected Date
What's New?	<ul style="list-style-type: none">• Highlighting new features and/or changes for the upcoming administration	Now Available!
Crosswalk between PAN and new IL Administration Platform	<ul style="list-style-type: none">• Key words/terminology differences from 2024 to 2025	Now Available!
Getting Started (User Access)	<ul style="list-style-type: none">• Accessing the new system• Creating users	Now Available!
Accommodations & Accessibility Features	<ul style="list-style-type: none">• Assigning accommodations• Paper Testing	Now Available!
Technology Readiness	<ul style="list-style-type: none">• Installing and updating TestNav• Support sites for devices and system updates	Now Available!
Getting to Know Your Resources	Expected January 17, 2025	
Test Management for District and School Test Coordinators	Expected February 3, 2025	
Test Management for Test Proctors and Test Support Staff	Expected February 3, 2025	

Illinois Assessment of Readiness

KEY DATES

Events	Dates
IAR Spring 2025 Testing Window – Paper Testing IAR Spring 2025 Testing Window – Online Testing	March 3 – April 4, 2025 March 3 – April 18, 2025
SIS Student Enrollment Nightly Update to Administration Platform	December – April 17, 2025
Deadline for Initial Order-Paper Registration Pre-ID Deadline	January 22, 2025
Materials Delivered to District *Initial Order for ELA/Math Paper Materials *IAR and ISA Manuals	February 20, 2025
Additional Order window for districts/schools (paper testing materials)	February 20 – April 1, 2025
Additional Order window for districts/schools (computer testing materials)	February 20 – April 15, 2025

Illinois Assessment of Readiness

ACCOMMODATIONS

With the launch of the new Illinois Administration Platform, the accommodation file process and upload layout has also changed. Please utilize the available resources to add your accommodations into the platform.

[Field Definitions and Accommodations Supplement](#)

- Test Coordinator Resource:
[Accommodations Overview Training Video](#)
Explains the process for adding accommodations manually and via file upload.
- Third Party Vendor Resources:
[IL SIS Vendor Training Video](#)
[File Layout Template for Third-party SIS Vendors](#)

If you have additional questions related to the new layout, please schedule an Office Hours session or call Pearson customer support at 833-213-3879. The scheduling link can be found on the Pearson support site at the bottom of the page.

Illinois Assessment of Readiness

MANUALS AND RESOURCES

Resources are being posted as soon as they are approved for release. Please check the support site regularly to make sure that you have downloaded the most up to date version.

New Postings:

- [Field Definitions and Accommodations Supplement](#)
- [Test Administrator Manuals](#)
- [Test Coordinator Manual](#)



Illinois Assessment of Readiness

Return Access to IAR Practice Items

ILLINOIS STATE BOARD OF EDUCATION

Home Technology Setup Resources Training Practice Items Contact Support

Practice Items

Explore a range of valuable resources, including Practice Items, the Student Readiness Tool (SRT), and more, designed to empower educators in effectively preparing students for testing.

[Access SRT](#) [IL Digital Library](#)

IL Practice Items

Practice Items for each grade level of the IL assessment are provided below to help you become familiar with the types of questions and the format used on the TestNav 8 testing platform. To get started, please choose your desired subject from the menu below and then select your grade.

ELA Mathematics Science

Tutorials Grade 3 Grade 4

Student Readiness Tool

The SRT engages students in learning how to navigate TestNav. The SRT ensures fairness and inclusion for all students by showing them how to use TestNav tools, item types, and features that will appear on their assessments.

[Access SRT](#)

[For Released Items Click Here](#)

Illinois Assessment of Readiness

2025 IAR Field Test Participation

Field testing is a critical component in planning for future IAR testing. A small percentage of the Illinois student population is selected each year to participate. Please check the lists below to see if your school(s) is slated to participate. Students participating in the English Language Arts/Literature (ELA/L) field test will have a third unit added. Test administrators should use the same test administrative scripts and allow the same amount of time that they use for the other two ELA/L units.

- [2025 Field Participation List \(Ordered Alphabetically\)](#)
- [2025 Field Participation List \(Ordered by RCDTS Code\)](#)

Please note: There are multiple schools with the same name, so please verify your participation using the RCDTS code.

Illinois Assessment of Readiness

UPDATE CONTACT INFORMATION for ISBE ENTITY PROFILE SYSTEM (EPS)

Updates regarding the new IAR platform will be communicated to the contacts that are listed in the Entity Profile System (EPS). This is also how ISBE and Pearson will distribute new log in credentials for the platform. Please be sure to add district level and school level test coordinators in EPS so that they can be informed about important updates.



IMPORTANT

Special Note for Serving Schools and Cooperative Organizations

Serving schools and cooperatives now have the ability to add assessment contact information into EPS. Please update EPS accordingly. If EPS is not a part of your system listing menu for IWAS, please log in and request authorization so that you can make this important update.

Contact Information

ISBE Website [Illinois Assessment of Readiness](#)

Victoria Henderson: Illinois Assessment of Readiness Coordinator

Email: assessment@isbe.net

ISBE Support Phone: 1-866-317-6034

Pearson Support Phone: 1-833-213-3879

Pearson Support Site: il.mypearsonsupport.com



DYNAMIC[®]
LEARNING MAPS

Dynamic Learning Maps Alternate Assessment (DLM-AA)

Test Coordinator Check-In

- Ensure every student whose IEP indicates participation in the alternate assessment, including homebound and hospitalized students, is enrolled in Kite. For students served outside of the home district, confirm with serving school that your students are enrolled and rostered in Kite.
 - If a student is missing from Kite, contact [Assessments](#). **DO NOT ADD STUDENTS TO KITE.**
- Create new teacher accounts or as needed, request a transfer by contacting the [Assessments Department](#).
 - Refer to [Who May Administer the DLM-AA](#) as appropriate.
- Monitor completion of required teacher training
- Confirm all testing devices are loaded with the most recent version of Kite Student Portal.

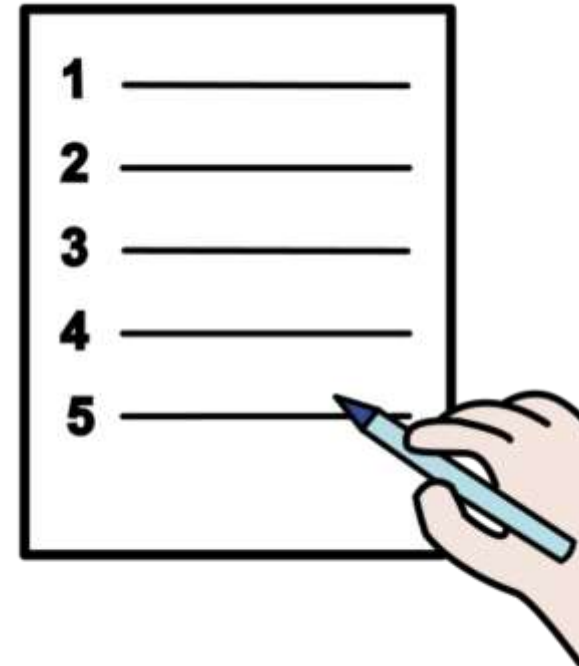
Test Coordinator Check-In

Test Coordinator should be completing these activities within Educator Portal:

- Create Rosters
- Monitor completion of Personal Needs and Preferences Profiles, and First Contact Surveys.
 - Remind teachers of the importance of thoroughly and accurately completing the First Contact Survey.
- Ensure teachers know how to obtain Testlet Information Pages prior to opening of test window

Test Administrator Check-In

- Complete required training.
Review [Guide to Required Test Administrator Training](#) if needed.
- Review [Test Administrator Manual](#).
- Ensure all testing devices are loaded with up-to-date Kite Student Portal.
- Become familiar with DLM testlets.



Test Administrator Check-In

Within Educator Portal:

- Complete security agreement.
- Review all student data in Kite Educator Portal, especially grade level.
- Complete Personal Needs and Preferences Profiles and First Contact Surveys. Refer to [Accessibility Manual](#) as needed.



Contact Information

ISBE Website [Dynamic Learning Maps Alternate Assessment](#)

DLM Website [Illinois DLM](#)

Pam Hartwig: Dynamic Learning Maps Alternate Assessment Coordinator

Email: assessment@isbe.net

DLM Support: dml-support@ku.edu

ISBE Support Phone: 1-866-317-6034

DLM Service Desk Phone: 1-855-277-9751



ACT with Writing, PreACT Secure, PreACT 9 Secure

High School Assessment Website

ASSESSMENT

High School Assessment (ACT with Writing, PreACT Secure, PreACT 9 Secure)

ASSESSMENT

HIGH SCHOOL ASSESSMENT (ACT WITH WRITING, PREACT SECURE, PREACT 9 SECURE)

ACT with Writing, PreACT Secure, PreACT 9 Secure

The procurement process for the high school accountability assessment has concluded. As the result, Illinois will transition to the ACT, beginning with the 2024-25 school year. Students in grade 11, and grade 12 as required 📄, will participate in the ACT with Writing which includes tests in English, Mathematics, Reading, Science, and Writing. Students in grade 9 will participate in the PreACT 9 Secure and those in grade 10 will participate in the PreACT Secure, each of which includes tests in English, Mathematics, Reading, and Science. School staff will administer these assessments online. Accommodations and EL supports are available. Scores from the administration of the ACT with Writing (if taken with ACT Standard Time or ACT-approved accommodations) can be used by students for a variety of purposes including college admission, scholarships, and NCAA eligibility.

Check back often as new information will be added as it becomes available. Thank you for your patience.

- ACT-Hosted Website for Illinois
- Participation Status for Invited Schools (Updated 01/03/2025) 📄
- Schedule of Events (SOE) for ACT with Writing
- Schedule of Events (SOE) for PreACT 9 Secure and PreACT Secure

Overview and General Information



Trainings and Webinars



Accommodations and Accessibility Supports



Practice Resources



Data and Reporting Resources



Continue to
check this page
for updates.

Confirm Participation in ACT Now by February 14, 2025

- ISBE loaded schools into [ACT Now](#), and school staff must "confirm participation" for all three assessments, separately, which includes:
 - Selecting Test Event dates, adding primary test coordinator information and shipping contact, and verifying shipping address.
- Emails from ACT about setting up schools in ACT Now:
 - www.isbe.net/Documents/10-31-2024_Email.pdf
 - www.isbe.net/Documents/11-07-2024_Email.pdf
 - www.isbe.net/Documents/01-03-2025_Email.pdf
- Beginning January 6, 2025, school staff may "confirm participation" in [ACT Now](#) for PreACT 9 Secure and PreACT Secure.
- The participation status of all schools for each test is updated weekly:
www.isbe.net/Documents/ACT-PreACT-Test-Sites-2025.pdf



Add Users in ACT Now

- ISBE loaded Users into [ACT Now](#) in early November.
- All Superintendents and Principals in ISBE's Entity Profile System (EPS) were given the District Test Coordinator (DTC) role at the **district and school** level, respectively. *Note that principals will still have access to only their school, even though they have the DTC role. This is because ACT Now does not allow lateral role assignment.*
- All “High School Test Coordinators” or “District Test Coordinators” in ISBE's EPS at the **district or school** level were given appropriate user roles based on the district or school level in EPS.
- All users loaded by ISBE can create an account in ACT Now to do the following:
 - Appoint other testing staff
 - Confirm participation for each administration: ACT with Writing, PreACT Secure, and PreACT 9 Secure. This must be done separately!
- [User Role Matrix](#)



Pre-ID in ISBE's Student Information System (SIS)

- **Review Student Testing Rosters**

The ACT/PreACT Secure Pre-ID is available now in SIS. Please view slides 112-125 from the SIS webinar from December 4, 2024:

www.isbe.net/Documents/SY25-Fall-Update.pdf.

- ACT/PreACT Secure Pre-ID Guidance document:

www.isbe.net/Documents/ACT-PreACT-PreID-2025.pdf.

- Contains details about how to check your Pre-ID roster for accuracy.
- Contains schedule for ISBE student transmissions from SIS to ACT Now (page 2).

- The participation status of all invited schools is posted and is scheduled to be updated weekly. **Confirm participation status in ACT Now ASAP!**

www.isbe.net/Documents/ACT-PreACT-Test-Sites-2025.pdf (Updated 01/03/25)

- Contact assessment@isbe.net with any questions.

Eligible Students

- Students in grades 9 and 10 will participate in the PreACT 9 Secure and the PreACT Secure, respectively.
- Students in grade 11*, and [grade 12 as required](#), will participate in the ACT with Writing.
 - *Students repeating grade 11 who have tested previously must test for accountability but have met the separate but related diploma requirement.
- Students who are completely or partially homeschooled **do not participate unless** they are receiving instruction from the public school in a tested content area.
- All **English learners**, including those for whom it is their first year in a U.S. school, must participate in all parts of the assessment, assigned based on their grade level in SIS.
- All **foreign exchange students** whom your school has classified as being in grade 9, 10, or 11, must participate.

ACT with Writing Test Windows



ACT with Writing (for grade 11 and 12, [as required](#))

Digital Testing Window "Test Event" Options:

Test Event 1: March 25-28 and March 31-April 4, 2025

Test Event 2: April 8-11 and April 14-18, 2025

Test Event 3: April 22-2 and April 28-May 2, 2025

Each two-week "Test Event" begins on a Tuesday.

IMPORTANT: A student with multi-day testing must begin and complete testing in the same Test Event.

www.isbe.net/Documents/State-Assessment-Dates-2024-25.pdf

ACT with Writing Components

Standard Time Testing

English

Time: 45 minutes

of Items: 75

- Production of Writing
- Knowledge of Language
- Conventions of Standard English

Science*

Time: 35 minutes

of Items: 40

- Interpretation of Data
- Scientific Investigation
- Evaluation of Models, inferences and experimental results

Mathematics*

Time: 60 minutes

of Items: 60

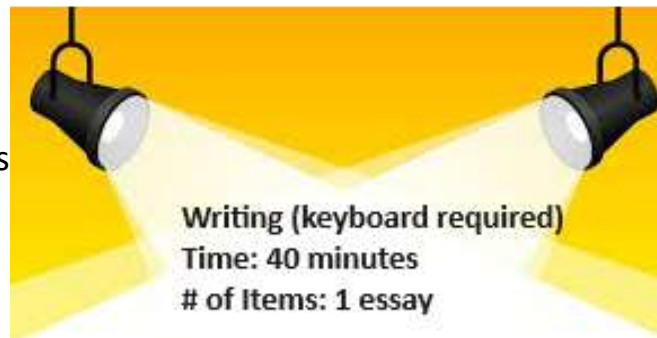
- Preparing for Higher Math
 - Number and Quantity
 - Algebra
 - Functions
 - Geometry
 - Statistics and Probability
- Integrating Essential Skills
- Modeling

Reading

Time: 35 minutes

of Items: 40

- Key ideas and details
- Craft and Structure
- Integration of knowledge and ideas



- Argumentative writing
- [ACT Writing Scoring Rubric](#)

****There is a 15-minute break after Mathematics and a 5-minute break after Science.***

PreACT 9 Secure & PreACT Secure Test Windows

PreACT 9 Secure (for grade 9) and PreACT Secure (for grade 10)

Digital Testing Window "Test Event" Options:

Test Event 1: March 17-28, 2025

Test Event 2: March 31-April 11, 2025

Test Event 3: April 14-25, 2025

Testing should not be administered on weekends.

IMPORTANT: A student with multi-day testing must begin and complete testing in the same Test Event.



PreACT 9 Secure & PreACT Secure Components

Standard Time Testing

English

Time: 35 minutes

PreACT 9 Secure # of Items: 44

PreACT Secure # of Items: 48

- Production of Writing
- Knowledge of Language
- Conventions of Standard English

Mathematics*

Time: 45 minutes

PreACT 9 Secure # of Items: 35

PreACT Secure # of Items: 38

- Preparing for Higher Math
 - Number and Quantity
 - Algebra
 - Functions
 - Geometry
 - Statistics and Probability
- Integrating Essential Skills
- Modeling

**There is a 15-minute break after Mathematics.*

Reading

Time: 40 minutes

PreACT 9 Secure # of Items: 33

PreACT Secure # of Items: 33

- Key ideas and details
- Craft and Structure
- Integration of knowledge and ideas

Science

Time: 35 minutes

PreACT 9 Secure # of Items: 32

PreACT Secure # of Items: 36

- Interpretation of Data
- Scientific Investigation
- Evaluation of Models, inferences and experimental results

Spring 2025 Technology

- Students will use TestNav to take the tests online. Paper testing is available only in rare instances (e.g., accommodations needs).
- TestNav app version 1.13.x is required. If you don't currently have this version installed, you will receive an error message.
- For more information regarding technical readiness, please check out the Technical Guide for Online Testing:
<https://www.act.org/content/dam/act/secured/documents/ACT-SD-Tech-Guide-for-Online-Testing.pdf>
- Technical Readiness Webinar: January 30, 2025
[Register Now!](#)

Spring 2025 Training-Register Now!

Training Name	Date and Time
<u>The ACT with Writing Accommodations Webinar</u>	<i>Thursday, October 17, 2024</i> <i>3:30 - 4:30PM</i>
<u>The ACT with Writing Pre-Test Training Webinar</u>	<i>Wednesday, November 6, 2024</i> <i>3:30 - 4:30PM</i>
<u>The ACT with Writing Test Day Training Webinar</u>	Tuesday, January 14, 2025 3:30 - 4:30PM
<u>PreACT 9 Secure and PreACT Secure Pre-Test Training Webinar</u>	Wednesday, January 22, 2025 3:30 - 5:00PM
<u>Technical Readiness Webinar</u>	Thursday, January 30, 2025 3:30 - 4:30PM
<u>PreACT 9 Secure and PreACT Secure Test Day Training Webinar</u>	Thursday, February 6, 2025 3:30 - 4:30PM

All webinars will be recorded and available for On Demand viewing shortly after the webinar concludes on the ISBE high school webpage:
www.isbe.net/Pages/HS-Assessment.aspx.



ACT Accommodations Office Hours

- ACT offers general Accommodations "Office Hours" (not state-specific).
- Please [register](#) for any of these offerings if you have more questions about ACT accommodations and/or the process for submitting requests for students taking the ACT with Writing.

ACT Accommodations Office Hours
<i>Tuesday, November 12, 2024 (Available On Demand!)</i>
<i>Wednesday, November 27, 2024 (Available On Demand!)</i>
<i>Tuesday, December 10, 2024, 11:00 AM (Available On Demand!)</i>
<i>Wednesday, January 08, 2025, 2:00 PM (Available On Demand!)</i>
Tuesday, January 21, 2025, 11:00 AM
Wednesday, February 05, 2025, 2:00 PM
Tuesday, February 18, 2025, 11:00 AM
Wednesday, March 05, 2025, 2:00 PM
Tuesday, March 18, 2025, 11:00 AM

Illinois ACT State Testing Office Hours

- ACT offers Illinois ACT State Testing "Office Hours" starting in November.
- Please [register](#) for any of these offerings if you have more questions about ACT assessments for spring 2025.

Illinois ACT State Testing - Office Hours	
<i>Tuesday, November 19, 2024</i> (Available On Demand!)	Tuesday, March 25, 2025, 2:00 PM
<i>Tuesday, December 3, 2024</i> (Available On Demand!)	Tuesday, April 1, 2025, 11:00 AM
Thursday, January 16, 2025, 2:00 PM	Tuesday, April 8, 2025, 11:00 AM
Tuesday, February 11, 2025, 2:00 PM	Tuesday, April 15, 2025, 11:00 AM
Tuesday, February 25, 2025, 2:00 PM	Tuesday, April 22, 2025, 11:00 AM
Tuesday, March 11, 2025, 2:00 PM	Tuesday, April 29, 2025, 11:00 AM
Tuesday, March 18, 2025, 2:00 PM	Tuesday, May 6, 2025, 11:00 AM

Spring 2025 Accommodations and EL Supports

- Accommodations for students with disabilities and supports for English learners (ELs) and are allowed for the ISBE-Provided PreACT 9 Secure, PreACT Secure, and ACT with Writing.
- Accommodations needs must be documented in an Individualized Education Program (IEP) or Section 504 Plan, and students who require English learner supports must be identified as English learners in ISBE's SIS.
- Accommodations and supports for English learners must be requested **only for those who will take the ACT with Writing. *DEADLINE is February 7, 2025!***
- Please note: Unlike the ACT with Writing, the use of accommodations and EL supports for the PreACT 9 Secure and the PreACT Secure **do not require ACT authorization.**

Spring 2025 EL Supports

ACT with Writing, PreACT Secure, PreACT 9 Secure

- Available supports for English learners include the following:
 - [ACT-authorized word-to-word bilingual dictionaries and glossary of terms](#)
 - ACT-translated test directions
 - Extended time (one and one-half time)
- The use of any English learner support must be requested in TAA ***only for students taking the ACT with Writing.***
Don't delay-DEADLINE is February 7, 2025!

Spring 2025 Accommodations and EL Supports

ACT with Writing

- The ACT **Test Accessibility and Accommodations (TAA)** is the system used to request approval for accommodations and EL supports for the **ACT with Writing**.
Start now-you do not need to wait for students to be loaded into ACT Now.
Don't delay-DEADLINE is February 7, 2025!
- [Test Accessibility and Accommodations \(TAA\) User Guide](#)
Staff will use TAA to request examinees' accommodations and/or English Learner (EL) supports and receive Decision Notifications for the ACT with Writing.
- To get started, staff responsible for submitting accommodations and EL supports requests must create an account at <http://success.act.org> from any computer via Google Chrome (preferred) or Mozilla Firefox.

Please refer to the [TAA User Guide](#) for more details about gaining access to TAA to begin submitting requests, starting on page 4.

Spring 2025 Accommodations and EL Supports

ACT with Writing

- [ACT Accessibility Supports Guide](#)

The *Accessibility Supports Guide* helps educational teams select appropriate accessibility supports and accommodations for their students for use during the test. *Accessibility supports* refer to systems, tools, and accommodations that remove barriers for the entire testing population, including examinees identified as having disabilities and English learners (ELs), as well as examinees who do not have a disability. All examinees need to be able to communicate fairly and effectively what they know and can do when they take a test. ACT provides accessibility supports that include the following:

- Universal supports
- Designated supports
- English learner supports
- Accommodations

Spring 2025 Accommodations and EL Supports

ACT with Writing

- ***Consent to Release Information to ACT form***

This form is used only for students participating in ACT with Writing and must be kept on file at the school; it is not provided to ACT.

Note: The Consent to Release Information to ACT form should be kept securely in the examinee's records for at least one year after the request is entered into ACT's TAA system. The form is provided in English and 18 additional languages.

- This form is linked from within the [Accessibility Supports Guide](#).

The direct link is:

www.act.org/content/dam/act/unsecured/documents/TAA-Consent-to-Release-Information-to-ACT.pdf

Spring 2025 Accommodations and EL Supports

ACT with Writing

- Students who have tested with accommodations for ACT National or ACT District testing will ***not need a new request*** to be submitted on their behalf ***if nothing additional is needed***. However, staff responsible for submitting requests must associate the existing request to **Illinois Spring 2025** in TAA.
- **IMPORTANT:** Accommodations and EL support requests are required to be entered into ACT's TAA - only for students taking ACT with Writing.
Don't delay! DEADLINE is February 7, 2025!

Spring 2025 Accommodations and EL Supports

PreACT 9 Secure and PreACT Secure

- Please visit the [ACT-hosted website for Illinois](#) to learn details about how to submit accommodations and EL supports for students taking [PreACT 9 Secure](#) or [PreACT Secure](#).
- Under "Step 1" view this section:
Manage Accommodations and English Learner (EL) Supports
 - **Understanding Accommodations and English Learner (EL) Supports:**
 - [Accessibility Supports Guide for PreACT Secure Products \(web content\)](#)
 - **Assigning Accommodations and English Learner (EL) Supports:**
 - [PreACT Secure Products–Assigning Student Accommodations Quick Start Guide \(pdf\)](#)
 - [PreACT Secure Products–Assigning Student Accommodations \(video\)](#)
 - [Layout Requirements–CSV Format: Accommodations Students File \(pdf\)](#)
 - [Accommodations Students File Template \(csv\)](#)
 - **Preparing Students for Testing with Accommodations and English Learner (EL) Supports:**
 - [ACT Authorized Bilingual Word-to-Word Dictionaries list \(pdf\)](#)

Spring 2025 Practice Resources

- [*Preparing for the ACT® Test*](#)

This resource contains a full-length practice ACT with Writing test, test details, test-taking strategies, what to expect on test day, and a link to a [Spanish version](#) of this resource. In Illinois, the writing section is required. Please note that the full-length practice ACT with Writing test in this resource mirrors the online practice test linked from the following slide.

- [*Preparing for the ACT® Test: Testing with Alternate Formats*](#)

This resource includes information about preparing for the ACT test with ACT-authorized alternate format accommodations, information about the multiple-choice and writing sections, test-taking strategies, and what to expect on test day. In Illinois, the writing section is required.

- [*Alternate Format Practice Tests*](#)

Schools may order free alternate format practice tests by completing and mailing this form.

Spring 2025 Practice Resources

- [Preparing for the ACT Test Taken Online](#)

This guide includes instructions for taking online practice tests, as well as highlighted features and navigation of the secure web application in which they will take the test.

- [The ACT with Writing Online Practice Tests](#)

IMPORTANT: Click on “Practice Tests” once you have navigated to the TestNav sign on page. No log in credentials are needed.

- Practice resources for PreACT 9 Secure and PreACT Secure will be coming in January 2025.

ACT Writing and Standard Setting

- As in the past, the **writing component is mandatory**. While the score was not included in the ELA score previously, ACT renders an ELA score that is a composite of the ACT English, ACT reading, and ACT writing components. Participation in all three components is required to generate an ACT ELA score and to earn ELA participation credit for purposes of accountability.
- [Understanding ACT ELA Scores](#)
The ACT® English language arts (ELA) score measures overall performance on the ACT English, ACT reading, and ACT writing tests. The ACT ELA score weights the English, reading, and writing scores approximately equally and is therefore reported only for students who take all three tests. This brief describes how the ACT ELA score is calculated and presents information for interpreting the score.
- Illinois is undergoing a unified standard setting for all general education content assessments during the summer of 2025. New cut scores will be recommended for our current IAR and ISA, and cut scores will be recommended for the PreACT Secure 9, the PreACT Secure, and the ACT with Writing. Learn more about the standard setting work by visiting <https://www.isbe.net/feedback>.

Contact Information

ACT with Writing, PreACT Secure, PreACT 9 Secure

Megan Forness: High School Assessment Coordinator

ISBE Email: assessment@isbe.net

ACT Email: statetesting@act.org

ACT Email (Accommodations): ACTStateAccoms@act.org

ISBE Support Phone: 1-866-317-6034

ACT Phone: 1-855-730-0400 (NEW!)

ACT Phone (Accommodations): 1-800-553-6244, option 1788



WIDA™/ACCESS

ACCESS Additional Materials

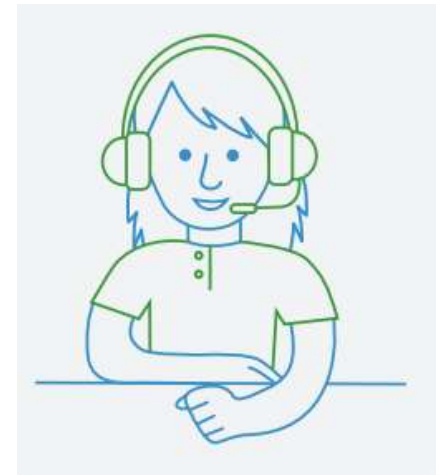
- ACCESS testing begins on Wednesday, January 15th.
- ACCESS testing materials from the initial orders should now be delivered. Some shipments may have been delayed by weather.
- Additional Materials ordering began on January 8 and goes through February 24, 2025.
- DRC sent out email, on December 30th, with instructions about how to order Additional Materials.
- Additional Material orders outside of CPS should be placed using the **_District Level Additional Orders** option (in the school menu). Orders should not be placed by individual school (except in CPS on specific dates).
- Contact DRC with any questions you may have about Additional Materials ordering, 855-787-9615



ACCESS Online Speaking Enhancement

WIDA and the Center for Applied Linguistics want to improve the ACCESS for ELLs Online Speaking test by giving students two opportunities to answer Speaking test items. Before they can make this change, they need to test it out.

In April 2025, they're hosting the ACCESS Online Speaking Enhancement Pilot Test. During the pilot test, participating educators will administer select ACCESS Online Speaking test items to English learners at their school.



Learn more about the pilot test and find participation details in the [ACCESS Online Speaking Enhancement Pilot Test](#) flyer.



2025 WIDA Annual Conference: Call for Proposals is now open!



The [2025 WIDA Annual Conference](#) will take place October 27-30, 2025, in Seattle, Washington. You are invited to present. WIDA welcomes proposals from first timers and pros alike. Learn more and [submit proposals](#) by **January 21, 2025**.

[Five Ways to Build a Winning Proposal](#)



Upcoming WIDA Webinars

Please, join WIDA and DRC to learn about the following assessment topics:

- **Returning ACCESS Test Materials:** Tuesday, January 21 at 1:00pm-2:00pm CT
- **Monitoring ACCESS Completion for Test Coordinators:** Thursday, January 23 at 1:00pm-2:00pm CT



Learn more and add these upcoming webinars to your calendar on the [Webinars](#) page (login required).

Recordings are posted on the [Webinars](#) page within a week of the presentation.



Contact Information

ISBE Website [ACCESS/Alternate ACCESS](#)

WIDA AMS [Illinois WIDA AMS](#)

WIDA Public Website [Illinois WIDA Public Site](#)

WIDA Secure Portal [Illinois WIDA Secure Portal](#)

Barry Pedersen: WIDA ACCESS/Alternate ACCESS-Assessment Coordinator

Lauren Ligammari: ACCESS/Alternate Access-Multilingual

Email: assessment@isbe.net

WIDA Support: help@wida.us

DRC Support: wida@datarecognitioncorp.com

ISBE Support Phone: 1-866-317-6034

WIDA Secure Portal/Public Site Phone: 1-866-276-7735

WIDA AMS (DRC) Phone: 1-855-787-9615



KINDERGARTEN INDIVIDUAL DEVELOPMENT SURVEY

Kindergarten Individual Development Survey (KIDS)

KIDS Next Steps

Fall 24 KIDS Exemptions

KIDS Exemption
Submission is open.
All exemptions are due by
January 20, 2025

Prepare for Next Fall

KIDS Required
Implementation Training
is open.

Winter Rating Window will open in January.

The winter rating window will
open in January for districts
who would like to participate.
This is not required.

KIDS Exemptions

- KIDS Exemptions are posted on the KIDS webpage under News and Updates.
- The next few slides will provide the guidance on when to complete and where to submit the exemptions.



KIDS Exemptions

An exemption is required when the following conditions apply:

- A student was not rated during the fall window.
- A student received an "unable to rate" rating on one of the 14 measures.



KIDS Exemptions

What information is needed to complete the exemption spreadsheet?

- District full name
- School full name
- School RCDTS code (15 digits)
- Student's state identification number (9 digits)
 - Please do not provide the local school ID
- Exemption code
 - Select from the drop-down menu
- Documentation (if available)
- Explanation



KIDS Exemptions

Where do I submit the KIDS Exemption documentation?

- All exemptions must be submitted using "[Send ISBE a File.](#)"
- "[Send ISBE a File](#)" is linked from the ISBE webpage in the upper left corner under "[System Quick Links.](#)"
- Be sure to select "KIDS Exemption Submission" for the ISBE email recipient.
- Documentation to be submitted includes the Excel spreadsheet and any additional documentation.
- **Due date is January 20, 2025.**

KIDS Required Training

- The required KIDS Implementation training is open for educators and administrators to complete.
- The registration link for KIDS training is available on the KIDS webpage under "News and Updates."
- To register, click [here](#).



The screenshot shows the 'KIDS Training Registration' page. The header features the 'KIDS' logo in blue, orange, and green, followed by 'Training Registration' in black. Below the header is a section titled 'Register for KIDS Training'. The text in this section states: 'Once you register for the training by completing the form below, your account will be created within 1-2 business days. Once your account is ready to go, you will receive an email with login information and instructions for getting started with the training course.' It also includes a link for technical assistance: 'If you have any questions or need technical assistance, please contact support@edleadersnetwork.org.' At the bottom of the registration section, there is a link to 'Sign in to Google to save your progress. Learn more.' and a footnote: '* Indicates required question'.

KIDS Required Training

- Training is available in an online course format.
- After registering, please allow 1-2 business days for a training course account to be created.
- **Prior to beginning the course,** you must read the User's Guide pages i-x in the [KIDS User's Guide & Instrument](#).



The screenshot shows the 'KIDS Training Registration' page. The header features the 'KIDS' logo in blue, orange, and green, followed by 'Training Registration' in black. Below the header, the section is titled 'Register for KIDS Training'. The text explains that upon registration, an account will be created within 1-2 business days, and login information will be emailed. It also provides a contact email for technical assistance: support@edleadersnetwork.org. A link to 'Sign in to Google to save your progress. Learn more' is present. At the bottom, a note states '* Indicates required question'.

KIDS Required Training

- When your account is ready, you will receive an email from Ed Leaders Network (ELN) with information and a link to the course.
- Once you receive the email from ELN you have 10 days to complete the training.
- If you do not receive an email within 1-2 business days, check your spam/junk folder. If you did not receive an email, please contact Michelle Escapa at mescapa@roe51.org



KIDS Required Training

- The online training course has two parts that must be completed.
- Educators must achieve an 85% on both parts. The educator will receive multiple chances to pass with 85%.
- The online training is self-paced but must be completed within 10 days.
- Once the course is completed, allow 5-10 business days for it to appear in your ELIS account.

**KIDS Implementation Training Part 1**
Completed April 12, 2023 / [view certificate](#) / Your Score / [See details](#)
Kindergarten Individual Developmental Survey (KIDS) is an observational survey designed to measure child development across various domains of learning. Teachers document evidence of students' demonstrated skills and behaviors through observations of the child during everyday activities.

**KIDS Implementation Training Part 2**
Completed April 12, 2023 / [view certificate](#) / Your Score / [See details](#)
Kindergarten Individual Developmental Survey (KIDS) is an observational survey designed to measure child development across various domains of learning. Teachers document evidence of students' demonstrated skills and behaviors through observations of the child during everyday activities.

KIDS Coaches

- Provide professional development to districts asking for support.
- For questions regarding professional opportunities with KIDS coaches, contact Michelle Escapa via email at mescapa@roe51.org.
- [Use the KIDS Coach contact Map](#) to view the KIDS coach assigned to your district.
 - Hover your mouse over your region, and the KIDS coach contact information will appear.



KIDS Coaches Professional Development Opportunities

- [Professional Learning Opportunities with KIDS Coaches](#)
- Upcoming opportunity
 - Purposeful Play Book Discussion
 - January 28 - February 18, 2025
 - Every Wednesday: 4:00-5:00 pm
 - [Register for Purposeful Play Book Discussion](#)

Contact Information

[ISBE KIDS Website](#)

KIDS Questions? Please send them to the email address below:

Email: assessment@isbe.net

ISBE Support Phone: 1-866-317-6034

Upcoming Assessment Update Webinars

Webinar Dates/Times

Webinar Date	Webinar Time
Friday, January 24, 2025	10:00-11:00 AM
Friday, February 7, 2025	10:00-11:00 AM
Friday, February 14, 2025	10:00-11:00 AM
Friday, February 21, 2025	10:00-11:00 AM
Friday, February 28, 2025	10:00-11:00 AM

Registration links for upcoming webinars and archived recordings and PDF presentations of past webinars are available on the [Assessment Communications webpage](#) under "Presentations and Webinars."

We will provide a webinar every Friday beginning in February until the end of May.



Contact Information

ISBE Assessment Department

Phone: 866-317-6034
Email: assessment@isbe.net

Illinois Assessment of Readiness

Phone: 833-213-3879
[Pearson Support Webpage](#)

Illinois Science Assessment

Phone: 833-213-3879
[Pearson Support Webpage](#)

KIDS

Phone: 866-317-6034
Email: assessment@isbe.net

ACT with Writing, PreACT Secure, and PreACT 9 Secure

Phone: 855-730-0400
•Email: statetesting@act.org

DLM-AA

•Phone: 855-277-9751
•Email: DLM-support@ku.edu

Data Recognition Corporation (DRC) ACCESS

Phone: 855-787-9615
Email: wida@datarecognitioncorp.com

SIS Helpdesk

•Email: SIS@isbe.net



Thank You

Next Webinar:
January 24, 2025
10-11 am