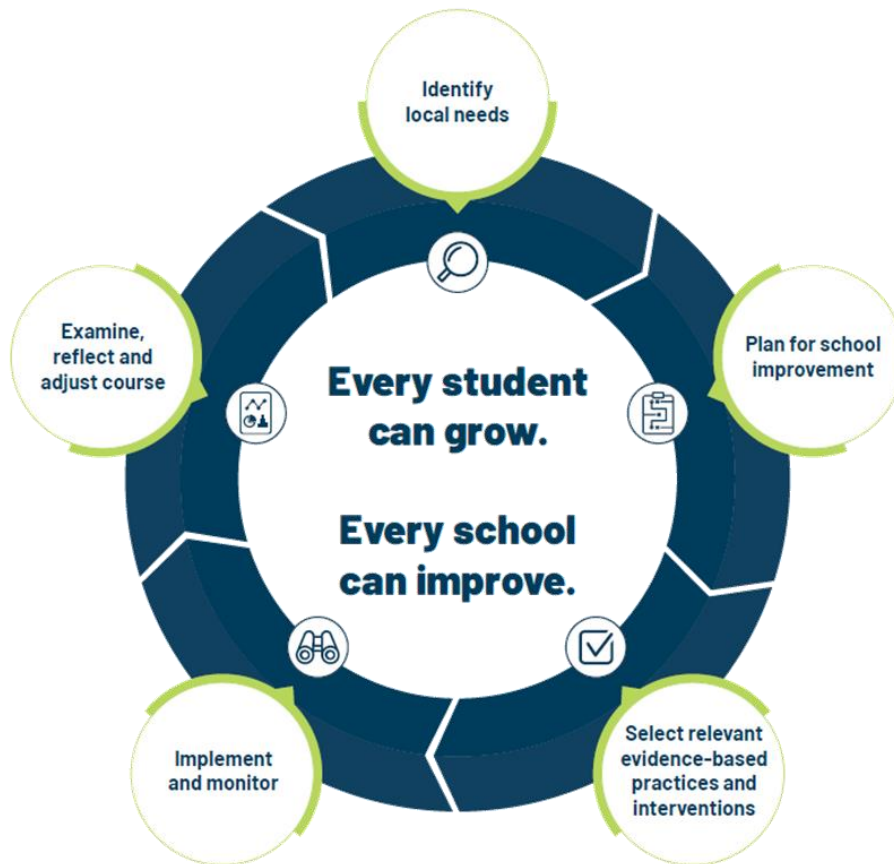


A Year in the Life and Monthly Topics in School Improvement

School and District Improvement

Collaborative and continuous



Who is responsible for school improvement efforts?

Teachers

Principals

Parents

ISBE Officials

School
Improvement
Coordinators

Approved
Learning
Partners

Superintendents
/ District
Administration

School Board
Members

U.S. Dept. Of
Education

School
Leadership Team

Union
Representatives

Students

A Year in the Life (YIL) of School Improvement



Guides the process and pacing of continuous improvement



Timeline to serve as guard rails to keep the work on track



Planning Year:
Initial Designation in October through July



Implementation Years:
Pick up after the planning year and continue for three years

Differentiated Versions

- Document headers are color coded.
- Document title indicates planning or implementation.

All Schools

Targeted Schools

Comprehensive Schools

Intensive Schools

A Year in the Life of School Improvement Planning | Comprehensive Schools



Key Activities	School Improvement Coordinators	ISBE	District Staff	Comprehensive School Principal	School Leadership Team	School Level Needs Assessment Vendor
----------------	---------------------------------	------	----------------	--------------------------------	------------------------	--------------------------------------

A Year in the Life of School Improvement Implementation Year | All Schools



Key Activities	School Improvement Coordinators	School Improvement Director	ISBE	District Staff	Building Principal	School Leadership Team
----------------	---------------------------------	-----------------------------	------	----------------	--------------------	------------------------

Developing Leadership Capacity

All versions focus on building leadership capacity.

A Year in the Life of School Improvement Getting Started | All Schools



		Key activities	ISBE Resources	District Staff	School Principal	School Leadership Team
GETTING STARTED	Month 1	View School Improvement On-Demand Learning Series 1.	School Improvement On-Demand Learning Series 1	View School Improvement On-Demand Learning Series 1.	View School Improvement On-Demand Learning Series 1.	View School Improvement On-Demand Learning Series 1.
		<ul style="list-style-type: none"> Identify a school leadership team (SLT) that includes school and district staff to guide the school improvement planning and implementation process. Prepare to work with the school leadership team and its role in school improvement efforts. 	School Leadership Team Guidance Document School Leadership Team On-Demand Video School Leadership Team Presentation	<ul style="list-style-type: none"> Identify a school leadership team that includes district and school leaders to guide the school improvement planning and implementation process. View "Identifying the School Leadership Team" video. 	<ul style="list-style-type: none"> Work with the district to identify school leadership team members. View "Identifying the School Leadership Team" video. 	Review composition of the SLT with district and school administration to ensure a diverse representation of staff.
		Monthly Topics and Tasks <ul style="list-style-type: none"> Identify local needs by using multiple sources of data, including Equity Journey Continuum (EJC) data, and complete the school-level needs assessment. Start the process of completing the Illinois Quality Framework Supporting Rubric (IQFSR). 	Monthly Topics and Tasks for All Schools Illinois Quality Framework Supporting Rubric (IQFSR) Facilitating the IQFSR	<ul style="list-style-type: none"> Review indicators, data, teaming structures. Meet with school staff to discuss needs and support for school. Prepare to facilitate the work of the IQFSR with the building principal. 	<ul style="list-style-type: none"> Review indicators, data, teaming structures. Meet with district staff to discuss needs and support for school. Prepare to facilitate the work of the IQFSR with district staff. 	Consistently collect and analyze various sources of data as part of the needs assessment process.

Key Activity Examples

PLANNING YEAR

Monthly Topics & Tasks:

- Identify a school leadership team (SLT)
- Prepare to work with the SLT in school improvement efforts.
- Introduce the Illinois Quality Framework Supporting Rubric (IQFSR)

November



Monthly Topics & Tasks

	Topics and tasks	Essential questions
October	<ul style="list-style-type: none"> • Receive summative designation letter. • Respond to checklist in letter. 	<ul style="list-style-type: none"> • How will you interpret and communicate your summative designation to stakeholders?
November	<ul style="list-style-type: none"> • Attend newly-designated schools webinar. • Attend an initial meeting with a School Improvement Coordinator to review indicators, data, and teaming structures. • Attend second meeting with a School Improvement Coordinator for an introduction to the Illinois Quality Framework Supporting Rubric (IQFSR). Utilize the Facilitating the IQFSR Guidance document. • Identify a School Leadership Team (SLT). • Initial contact/meeting with school-level needs assessment vendor. • Begin process in IWAS for the planning year grant application. • View School Improvement On-Demand Learning Series 1. 	<ul style="list-style-type: none"> • Who should be on the school leadership team to guide the school improvement planning and implementation process? • What is a realistic monthly meeting schedule for the SLT?

Essential Questions to Guide the Work

Who should be on the SLT to guide the school improvement implementation process?

What is a realistic monthly meeting schedule for the SLT?

How is the district/school engaging and communicating with families about school improvement efforts?

After reviewing the Equity Journey Continuum data/information, what additional information do you need?

Putting it all together

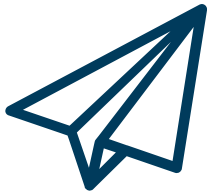
A Year in the Life of School Improvement

- Overarching framework for the year
- Defines key stakeholder roles
- Includes important due dates, deadlines, and requirements

Monthly Topics & Tasks

- Detailed guidance for each month's school improvement efforts
- Provides essential questions to engage in with your leadership team

School Improvement Helpline



schoolimprovement@isbe.net



(217) 524-1817