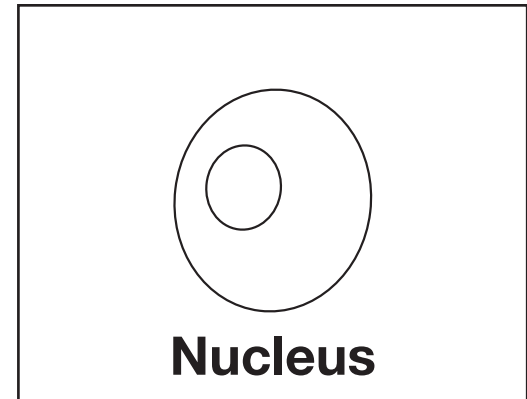
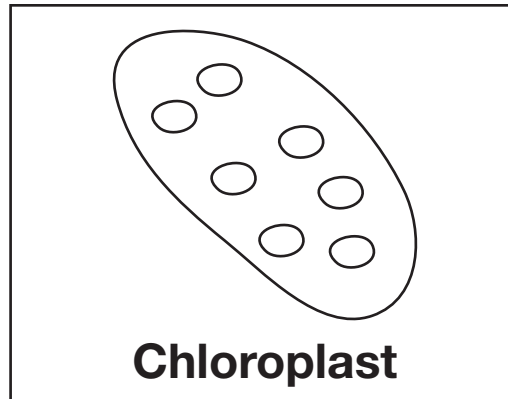
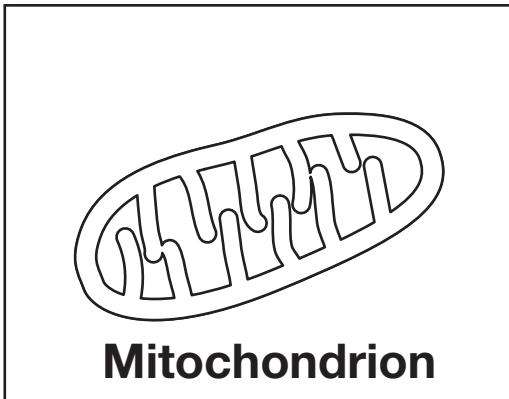
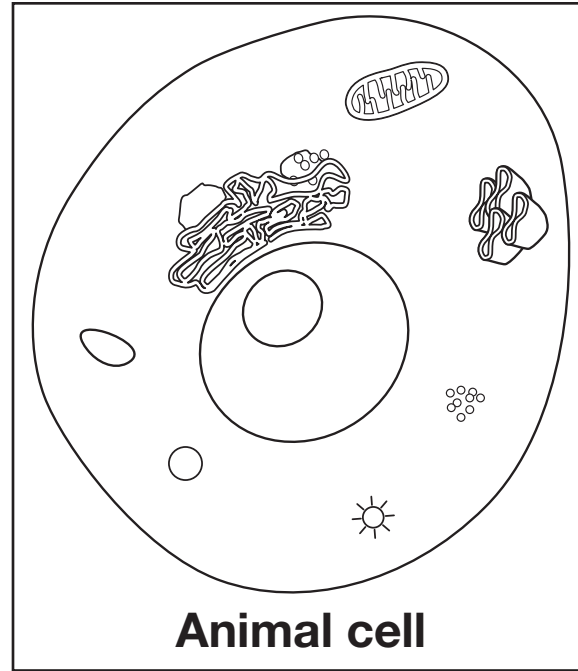
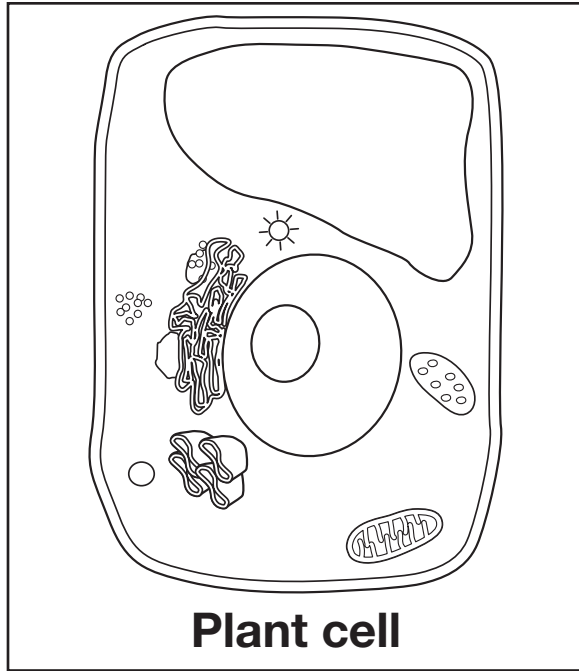


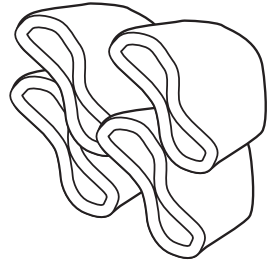
## Task 00:

<ul style="list-style-type: none"><li>• Present the primary task to the student. Say: <b>These diagrams show a plant cell and an animal cell. These pictures show small parts found inside cells. Which small part is only found inside plant cells?</b></li><li>• Point to each option and say: <b>Mitochondrion, Chloroplast, Nucleus</b></li></ul> <p>The student receives a score of 4 for a correct response. If the student does not respond, repeat the primary task <i>only once</i> exactly as it appears. If the student responds correctly after the second presentation of the primary task, the student receives a score of 4. If the student chooses an incorrect answer or does not respond, move to Level 3.</p>	<b>4</b>
<ul style="list-style-type: none"><li>• Turn the page to provide the general prompt.</li><li>• Re-present the primary task and answer options.</li></ul> <p>The student receives a score of 3 for a correct response. If the student does not respond or responds incorrectly, move to Level 2.</p>	<b>3</b>
<ul style="list-style-type: none"><li>• Indicate the correct answer and re-present the primary task and answer options.</li></ul> <p>The student receives a score of 2 for a correct response. If the student does not respond or responds incorrectly, move to Level 1.</p>	<b>2</b>
<p>If the student does not respond or responds incorrectly at Level 2, the student receives a score of 1.</p>	<b>1</b>

Correct answer: Chloroplast



- Say: **This picture shows another kind of small part. Notice that you can find this small part in both the plant cell and the animal cell.**
- Turn back to the primary task page and re-present the primary task and answer options.



**Golgi body**